



DE VALK
YACHT BROKERS



PANORAMER 40



DE VALK
YACHT BROKERS

PANORAMER 40

BROKER'S COMMENTS

The Panoramer 40 is a highly robust, ocean-going sloop designed by J.P. Brouns and typically constructed in aluminum by the renowned French shipyard META Yachts. Purpose-built for serious blue-water cruising, long-distance expeditions, and high-latitude sailing, it prioritizes safety, structural integrity, and exceptional directional stability over pure racing speed. Equipped with a watermaker, solar panels and windvane steering for full autonomy.

Reinoud Bicker Caarten

SPECIFICATIONS

Dimensions	12.95 x 3.86 x 1,85 / 1.85 (m)	Builder	META Chantier Naval
Built	2002	Cabins	2
Material	Aluminium	Berths	6
Engine(s)	1 x Volvo MD22L diesel	Hp/Kw	50.00 (hp), 36.80 (kw)
Asking price	€ 110.000 (VAT Paid)	Lying	contact Portugal

CONTACT

Sales office	De Valk Portugal	Telephone	+351 308 812321
Address	Edifício Administrativo - Ponta da Areia 8500 - 345 Portimão PT	E-mail	portugal@devalk.nl

DISCLAIMER

These particulars are given in good faith as supplied but cannot be guaranteed.



PANORAMER 40

GENERAL

Model	PANORAMER 40
Type	sailing yacht
LOA (m)	12,95
LWL (m)	11,62
Beam (m)	3,86
Draft (m)	1,85
Draft min (m)	1,85
Air draft (m)	17,10
Headroom (m)	2,10
Year built	2002
Builder	META Chantier Naval
Country	France
Designer	J.P. Brouns
Displacement (t)	8,1
Ballast (tonnes)	lead 3,2
Gross tonnage	18
Net tonnage	11,9
CE norm	A
Hull material	aluminium
Hull colour	off-white
Hull thickness (mm)	strongall 5086 10-12mm
Hull shape	hard chine
Keel type	fin keel
Superstructure material	aluminium
Rubbing strake	yes
Deck material	aluminium
Deck finish	non-skid paint
Superstructure deck finish	non-skid paint
Cockpit deck finish	non-skid paint
Antifouling (year)	2023



PANORAMER 40

Window frame	aluminium
Window material	double glazing
Deckhatch	2
Portholes	aluminium 6
Insulation	foam
Radar arch	Aft with solar panels
Fuel tank (litre)	aluminium 250L
Level indicator (fuel tank)	yes
Fuel daytank (litre)	6x 20L jerrycans
Freshwater tank (litre)	polyethylene 2x150L
Outside helm position	mechanical Tiller
Tiller	yes
More info on hull	10-12mm strongall 5086 aluminium hull with twin rudders, built for long distance sailing
More info on paintwork	New anti fouling 2026

ACCOMMODATION

Cabins	2
Berths	6
Interior	mahogany
Layout	Double cabin in bow, saloon with galley and chart table, aft double cabin, head with shower, workshop
Floor	teak and holly
Open cockpit	yes
Saloon	yes
Headroom saloon (m)	2,1m
Heating	central hot water
Navigation center	yes
Chart table	yes
Aft Cabin	Double
Dinette	yes
Dinette to convert into berth	yes



PANORAMER 40

Convertible berth	2x in saloon
Galley	yes
Countertop	wood
Sink	stainless steel
Cooker	calor gas
Oven	yes
Fridge	yes
Hot water system	220V
Water pressure system	electrical
Manual and/or foot pump	yes
Kettle	yes
Hot water tap	yes
Crockery	yes
Owners cabin	v-bed In bow
Bed length (m)	2m
Wardrobe	hanging/drawers/shelves
Bathroom	shared
Toilet	shared In bathroom
Toilet system	manual
Wash basin	in the bathroom
Shower	shared
Guest cabin 1	double bed Aft
Bed length (m)	2m
Wardrobe	drawers and shelves
Bathroom	shared
Toilet	shared
Toilet system	manual
Wash basin	in the bathroom
Shower	shared

MACHINERY



PANORAMER 40

No of engines	1
Make	Volvo
Type	MD22L
HP	50
kW	36.80
Fuel	diesel
Year installed	2002
Maximum speed (kn)	8
Cruising speed (kn)	6
Consumption (l/hr)	3
Range (nm)	350
Engine cooling system	freshwater heat exchanger
Drive	shaft
Engine controls	bowden cable
Gearbox	mechanical
Gearbox	mechanical
Propeller type	fixed
Propeller blades	3
Propeller shaft material	stainless steel
Shaft lubrication	water
Manual bilge pump	yes
Electric bilge pump	yes
Electrical installation	12/24/220
Start battery	1x95Ah
Service battery	4x 95Ah
Battery monitor	yes
Battery charger	ENAG
Solar panel	4x95Ah
Shorepower	with cable
Insulation transformer	Philippi 110/220V
Watermaker	Dessalinator D60



NAVIGATION

Compass	yes
Depth sounder/log	yes
Windset	yes
VHF	yes
Wind vane steering install.	yes
GPS	yes
Plotter/GPS	Furuno GP39-GPS
Radar/GPS	Mer Veille detector
Navtex	Furuno NX 300
Radio receiver	yes

EQUIPMENT

Sprayhood	yes
Bimini	yes
Cockpit cushions	yes
Bathing platform	Teak
Boarding ladder	stainless steel
Anchor	Delta 25KG
Anchor chain	50m 12mm galvanised steel
Anchor 2	yes
Other ground tackle	yes
Windlass	electrical 24V
Dinghy	inflatable
Outboard	yes
Davits	stainless steel
Davits controls	manual
Sea railing	stainless steel
Grab rail (superstructure)	stainless steel
Life raft	container New 2026
Lifejackets	yes



Safety harness	yes
Lifebuoy	yes
Safety lines on deck	yes
Horn	yes
Fenders	yes
Mooring lines	yes
Spare parts	yes
Tools	yes
Radio-cd player	yes
Speakers in salon	yes
Clock - barometer	yes
Fire extinguisher	yes

RIGGING

Rigging	sloop-cutter
Standing rigging	wire
Material mast	aluminium
Spreaders	2x2
Keel stepped mast	yes
Mainsail	39,5m ²
Mainsail cover	Lazy bag
Fully battened mainsail	yes
Main staysail	yes
Jib	16,8m ²
Genoa	58m ²
Genoa furler	yes
Genoa cover	UV strip
Staysail	yes
Reefing System	slabreefing
Backstay adjuster	tackle
Boomvang	tackle



Primary sheet winch	2x Lewmar 54ST
Secondary sheet winch	2x Harken 40 ST
Halyard winches	3 on mast Harken 32/40/44
Reefing winch	Harken on mast
Multifunctional winches	yes
Winchcovers	yes



PANORAMER 40



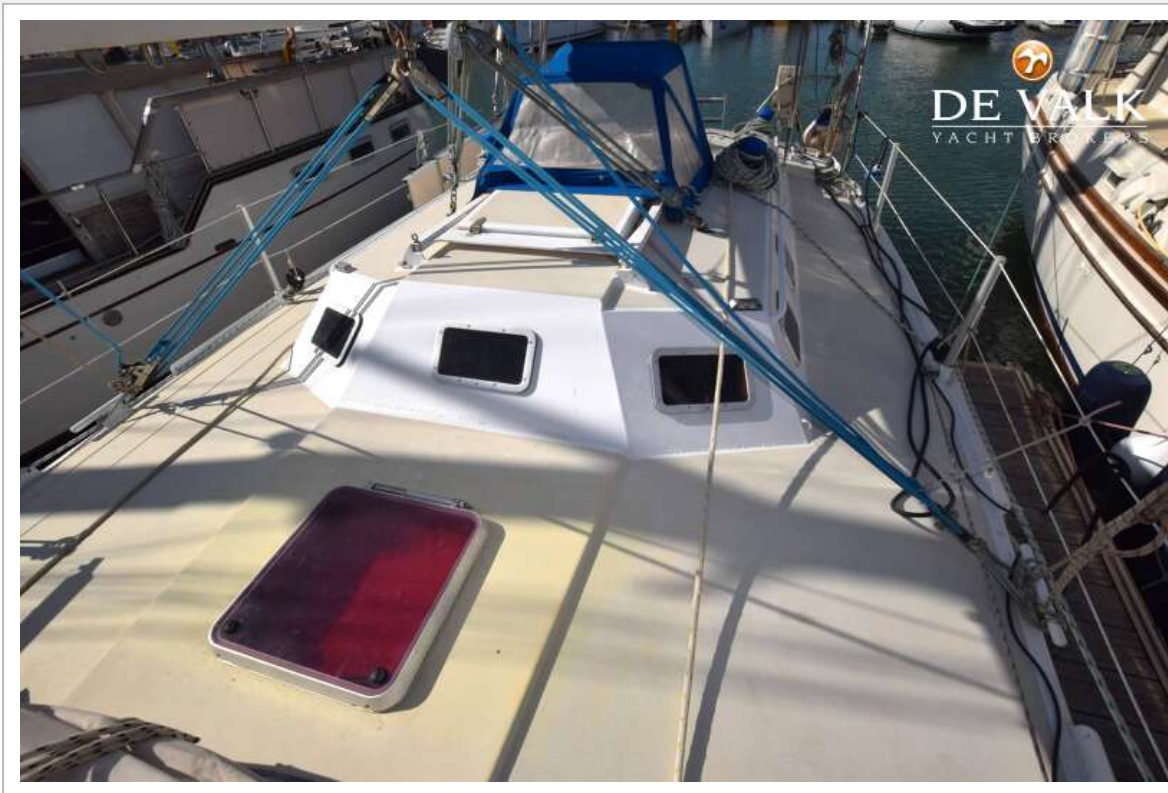
PANORAMER 40



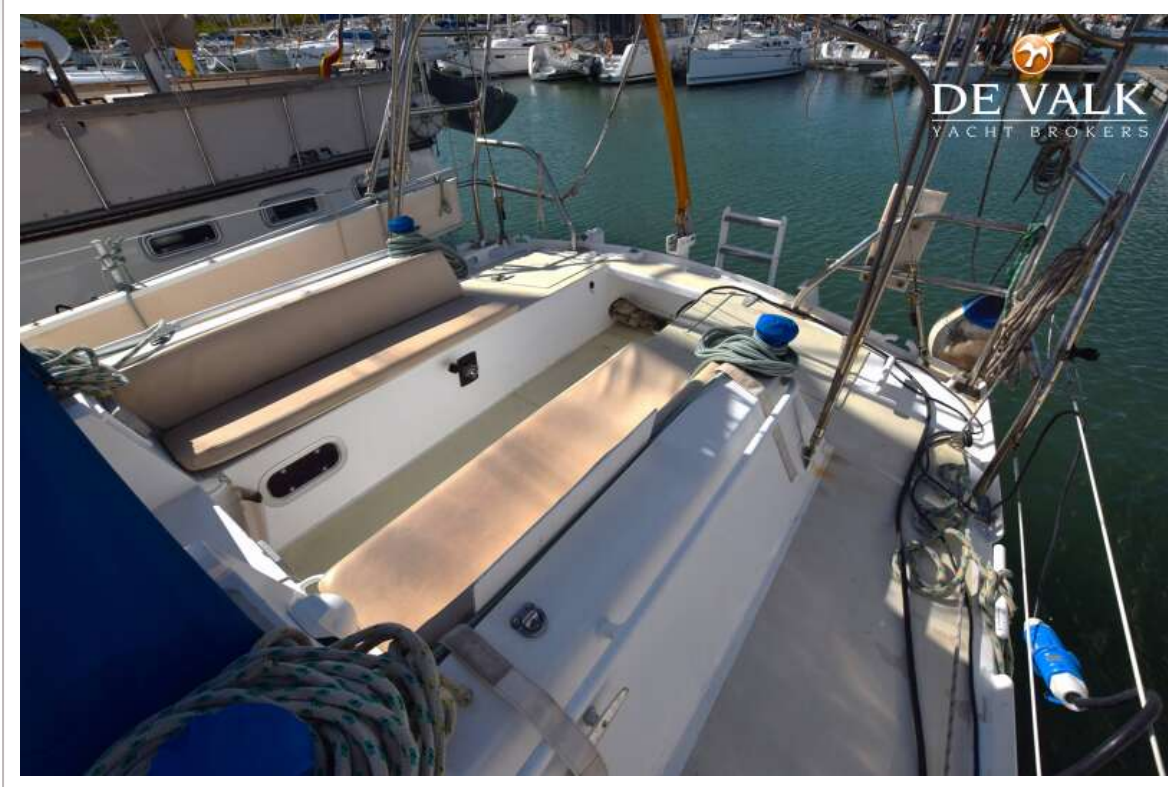
PANORAMER 40



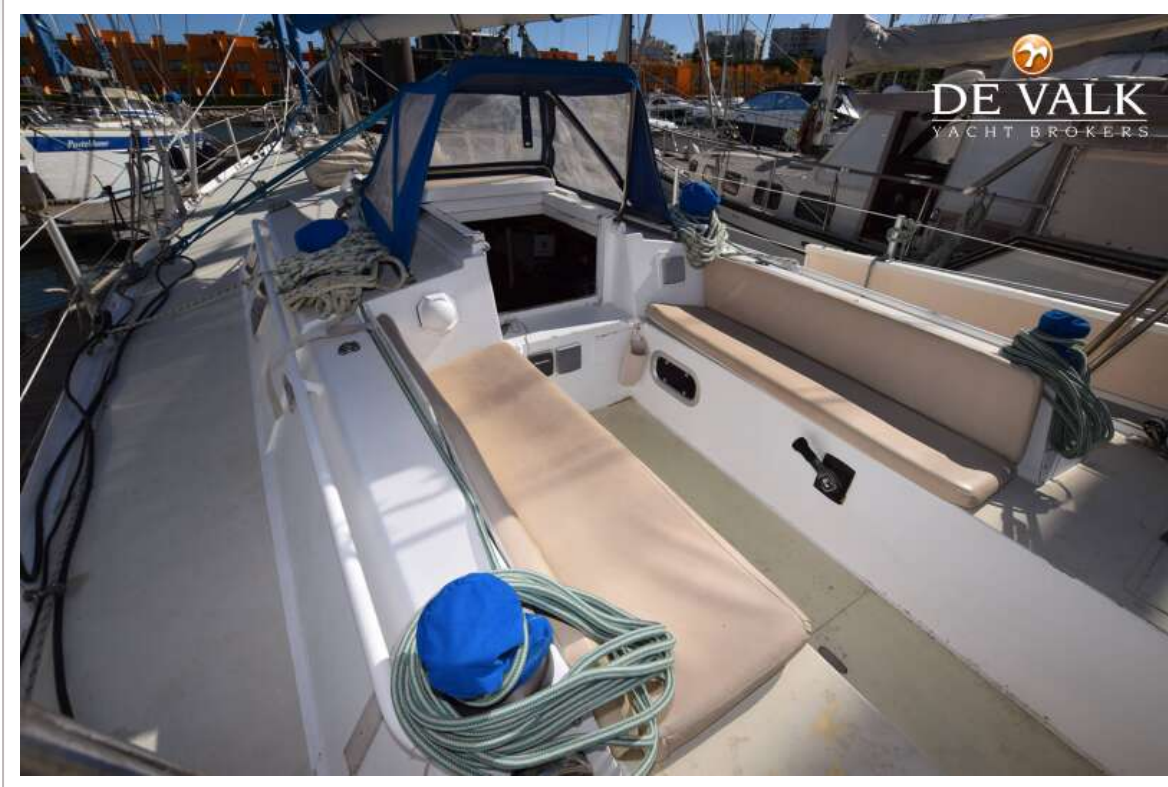
PANORAMER 40



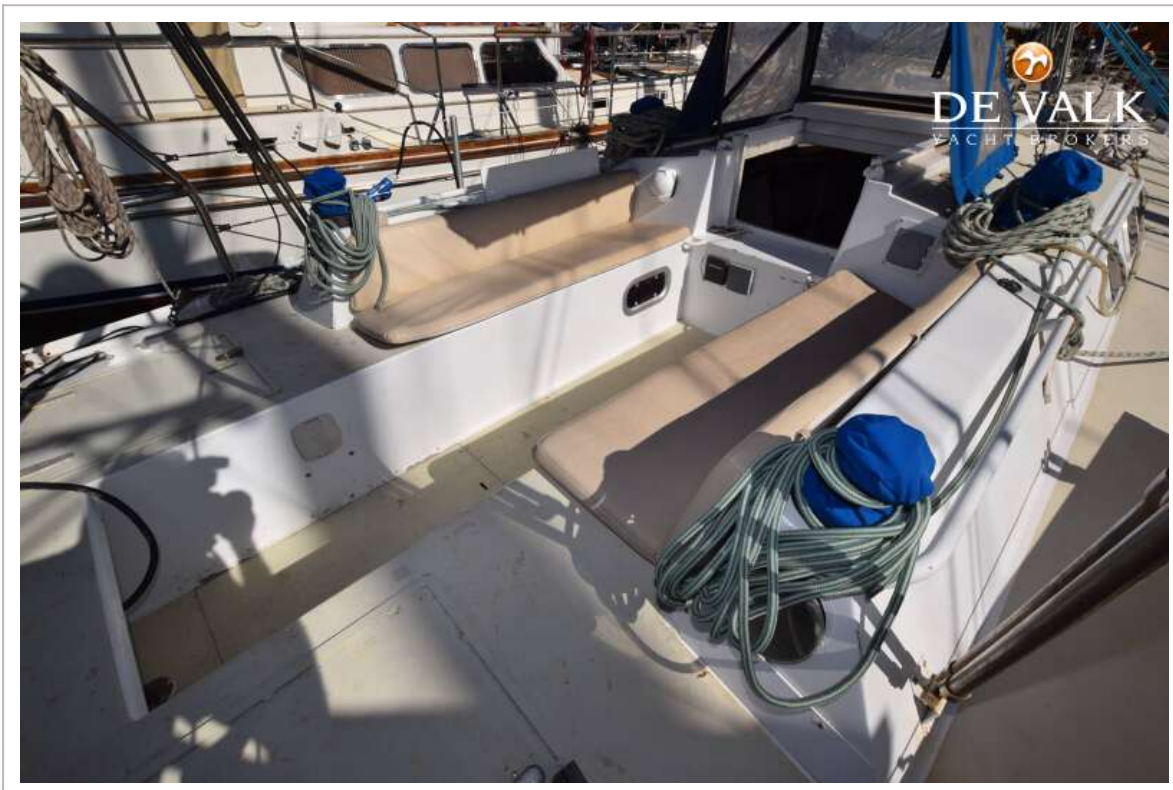
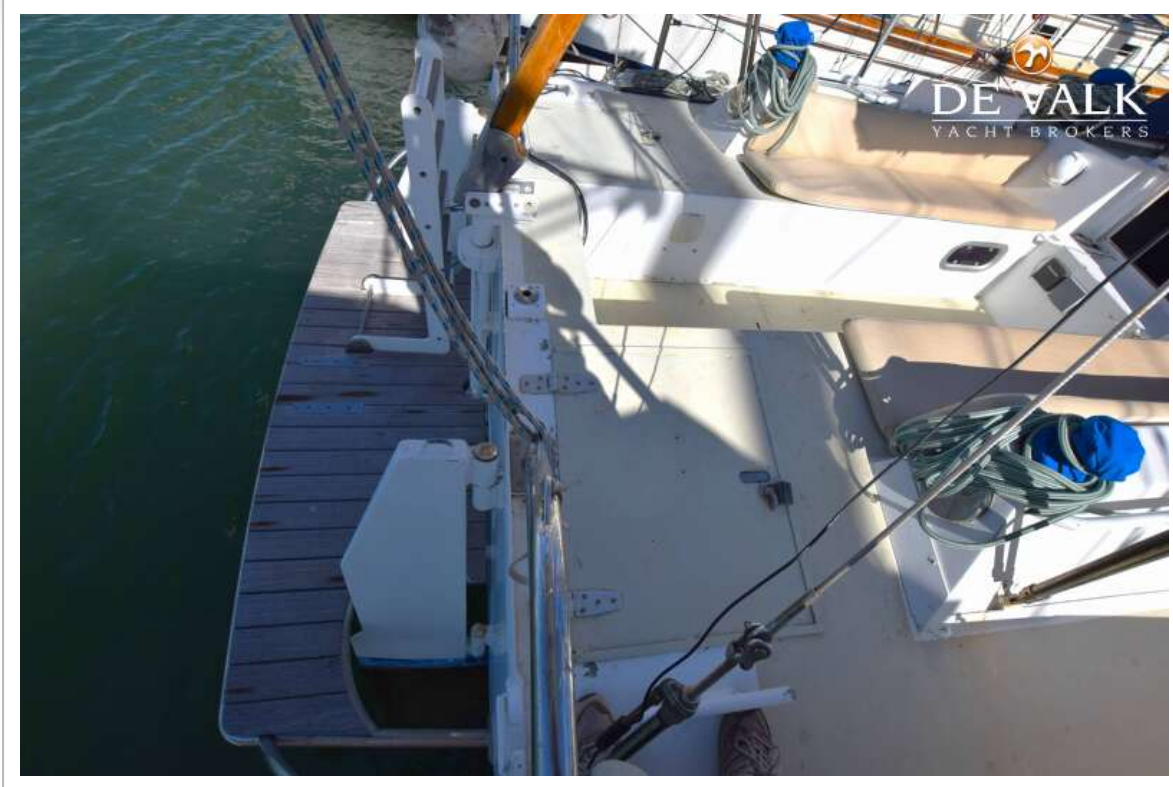
PANORAMER 40



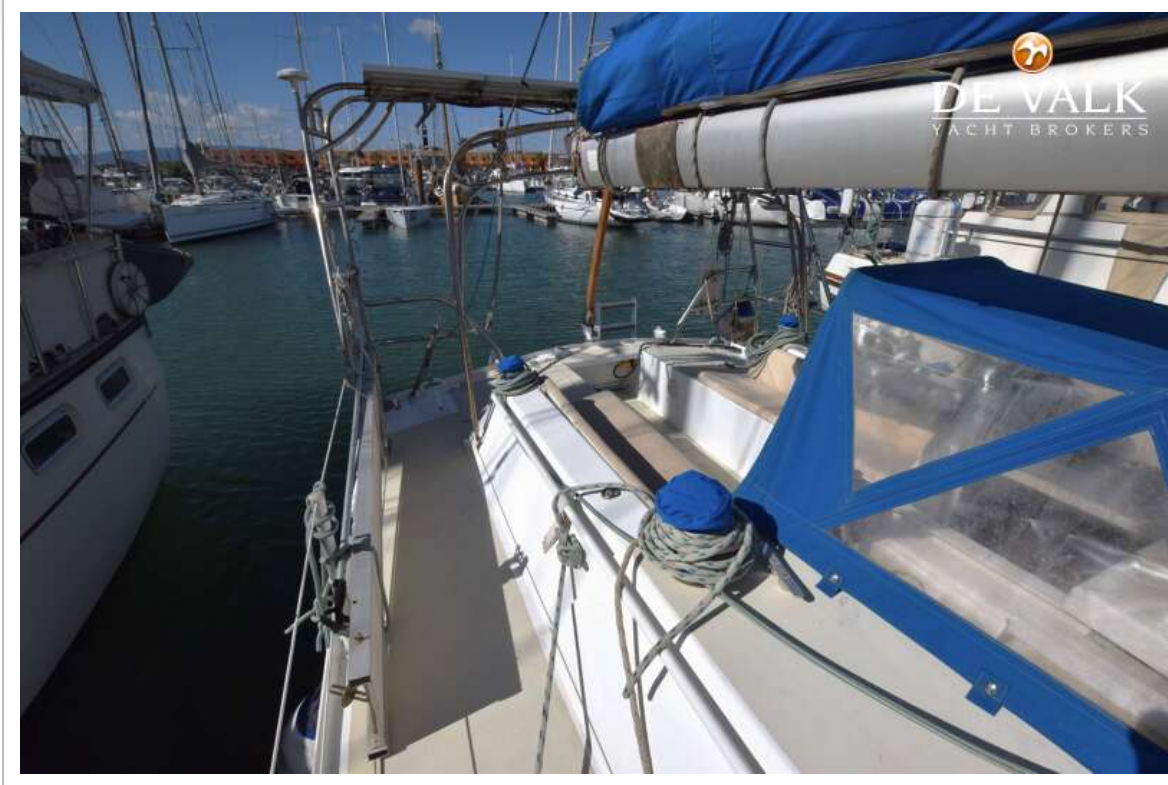
PANORAMER 40



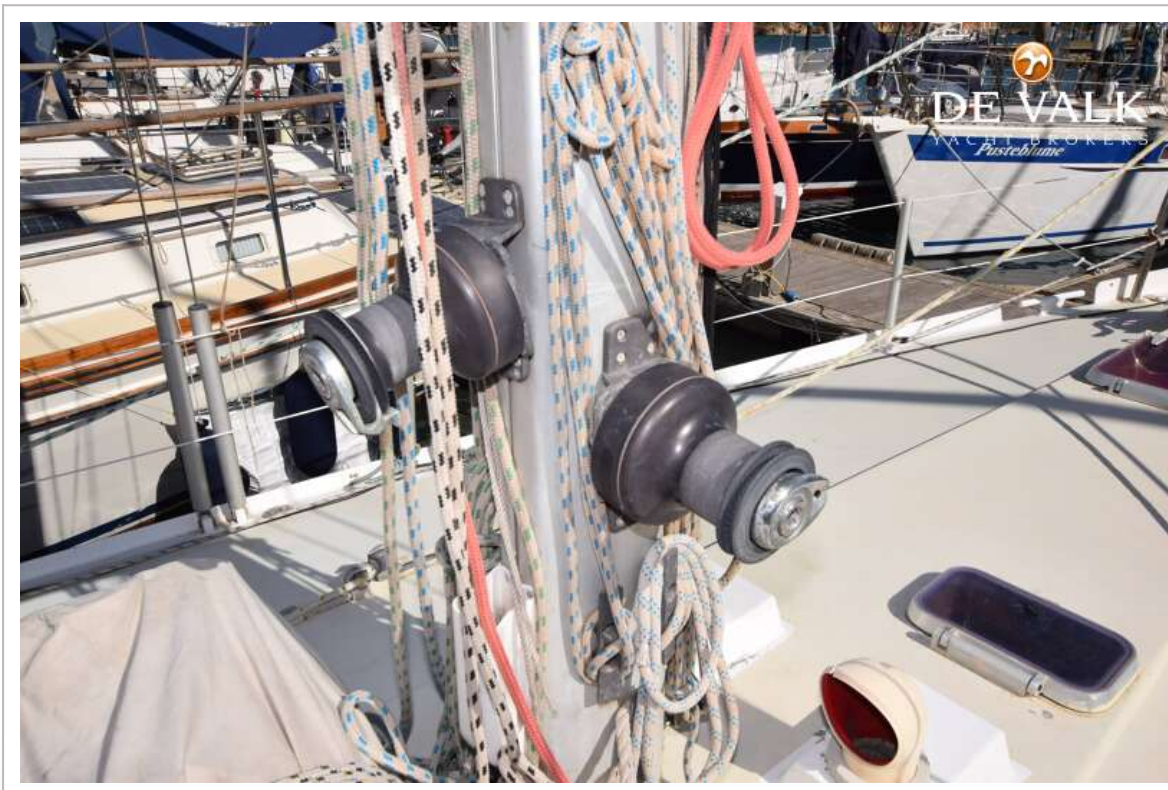
PANORAMER 40



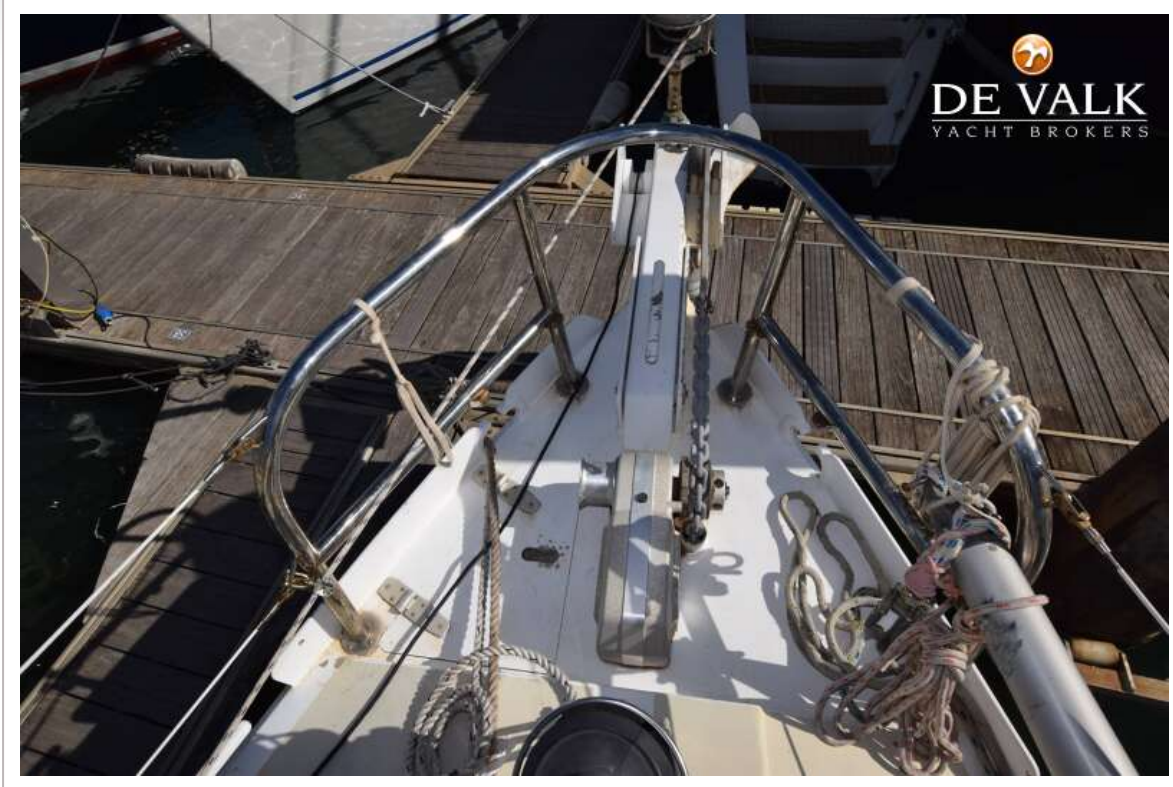
PANORAMER 40



PANORAMER 40



PANORAMER 40



PANORAMER 40



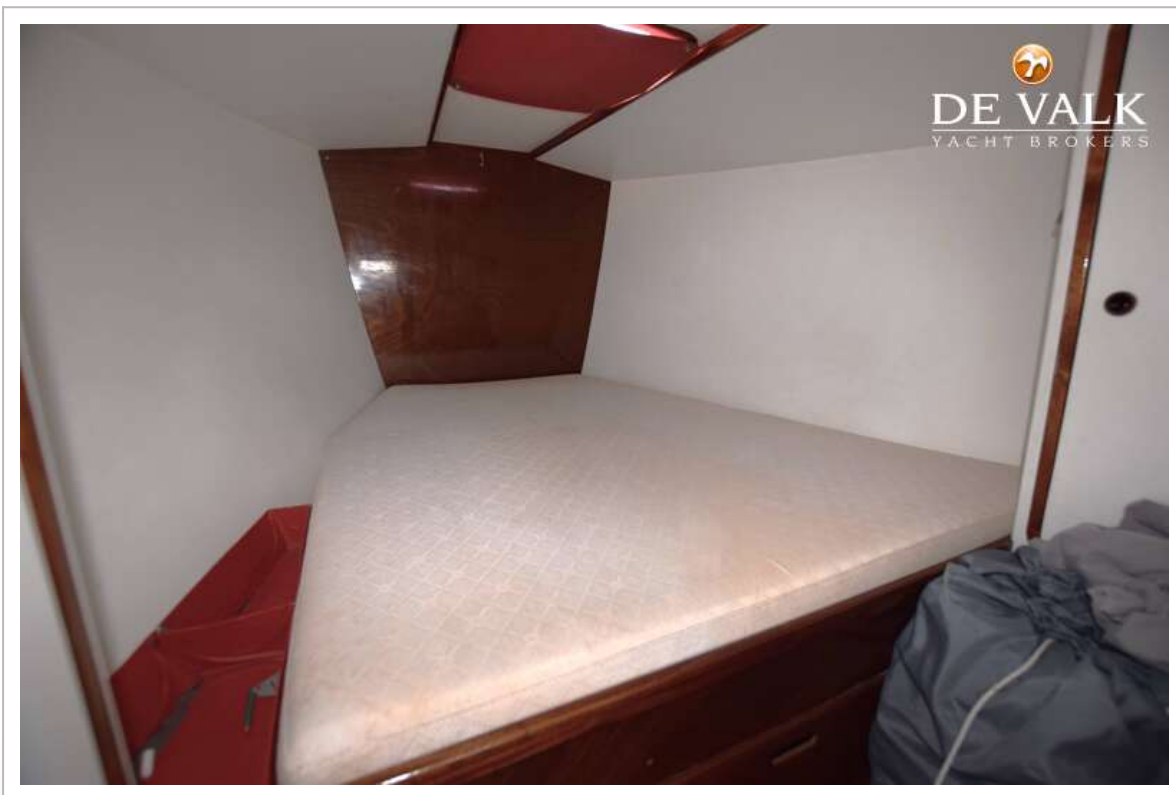
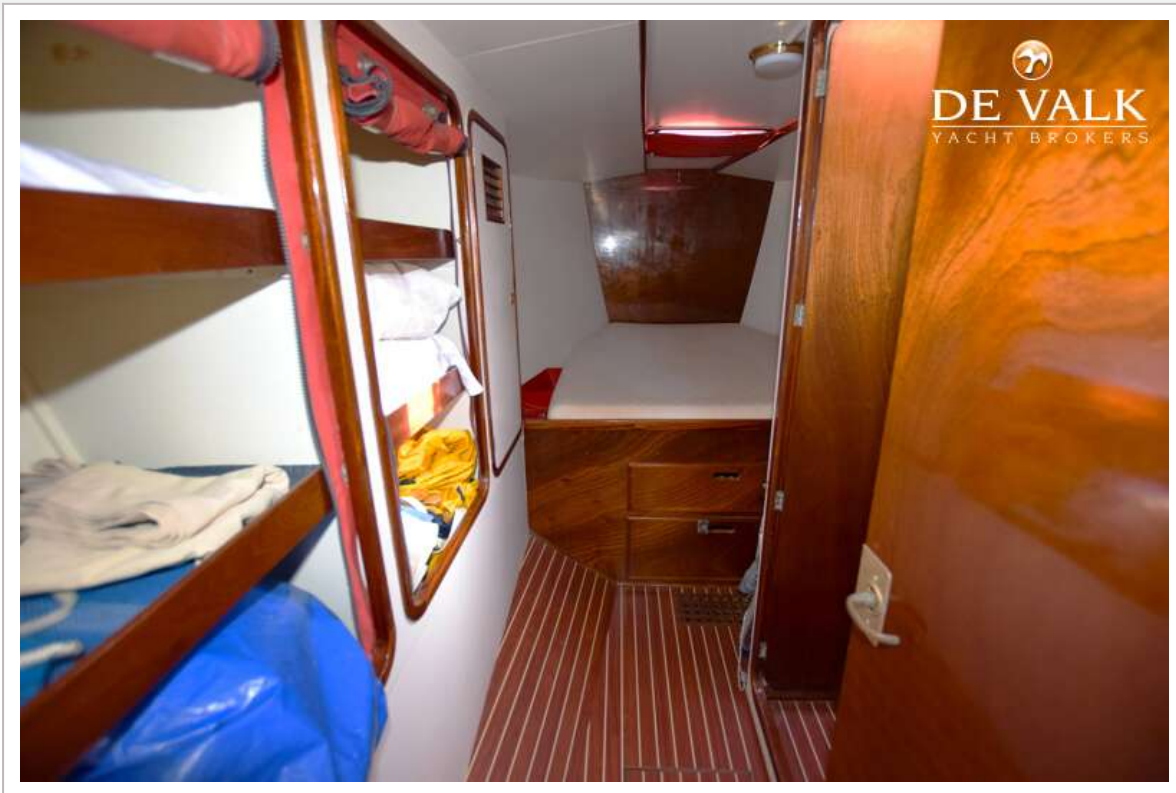
PANORAMER 40



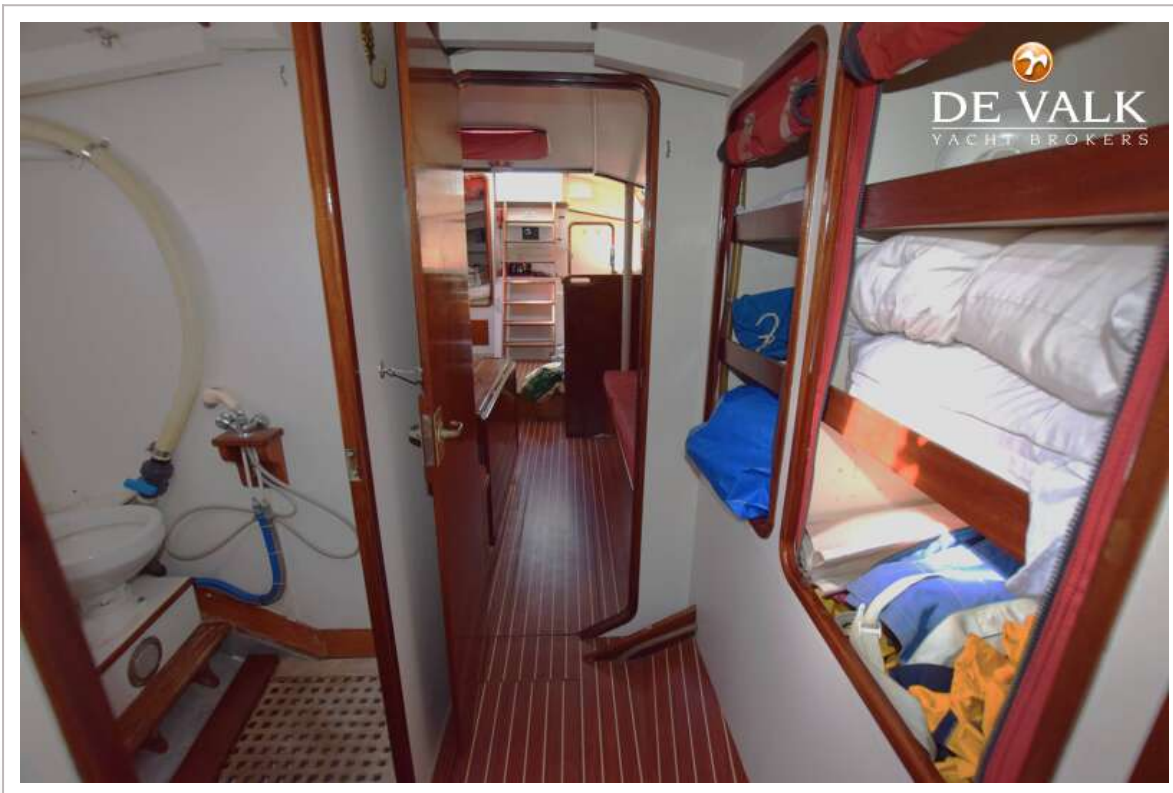
PANORAMER 40



PANORAMER 40



PANORAMER 40



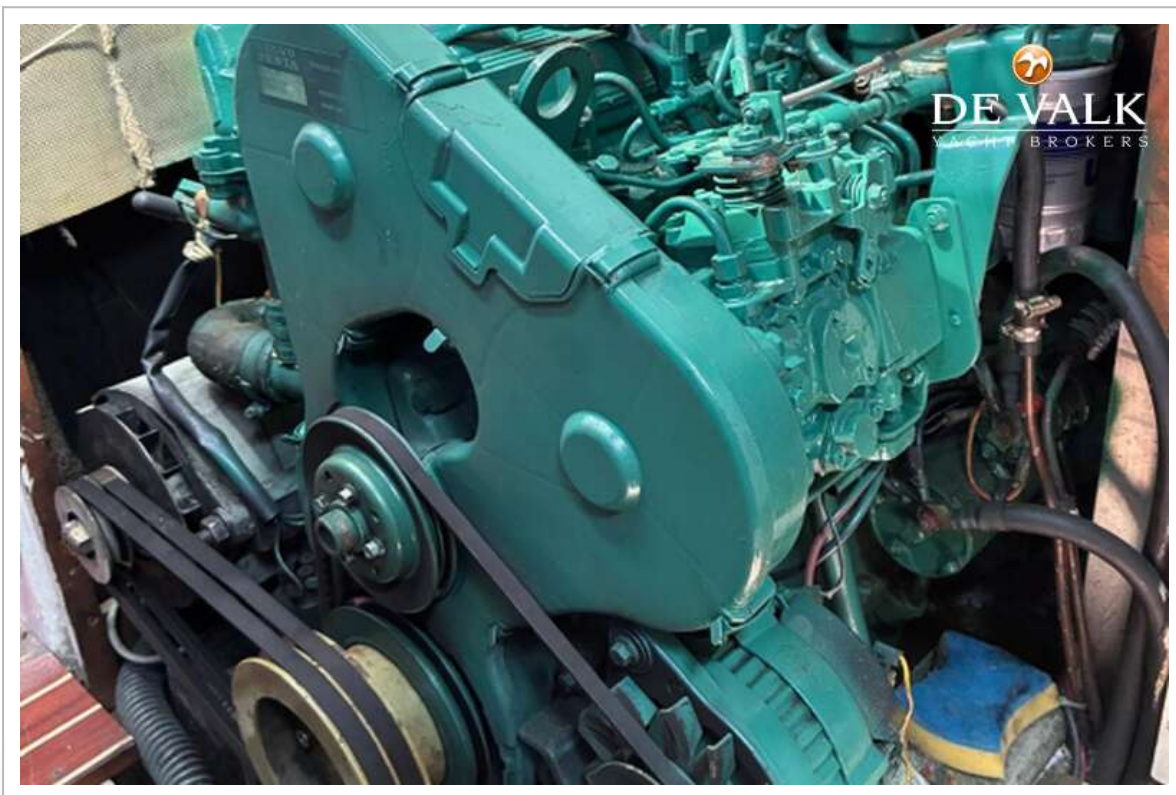
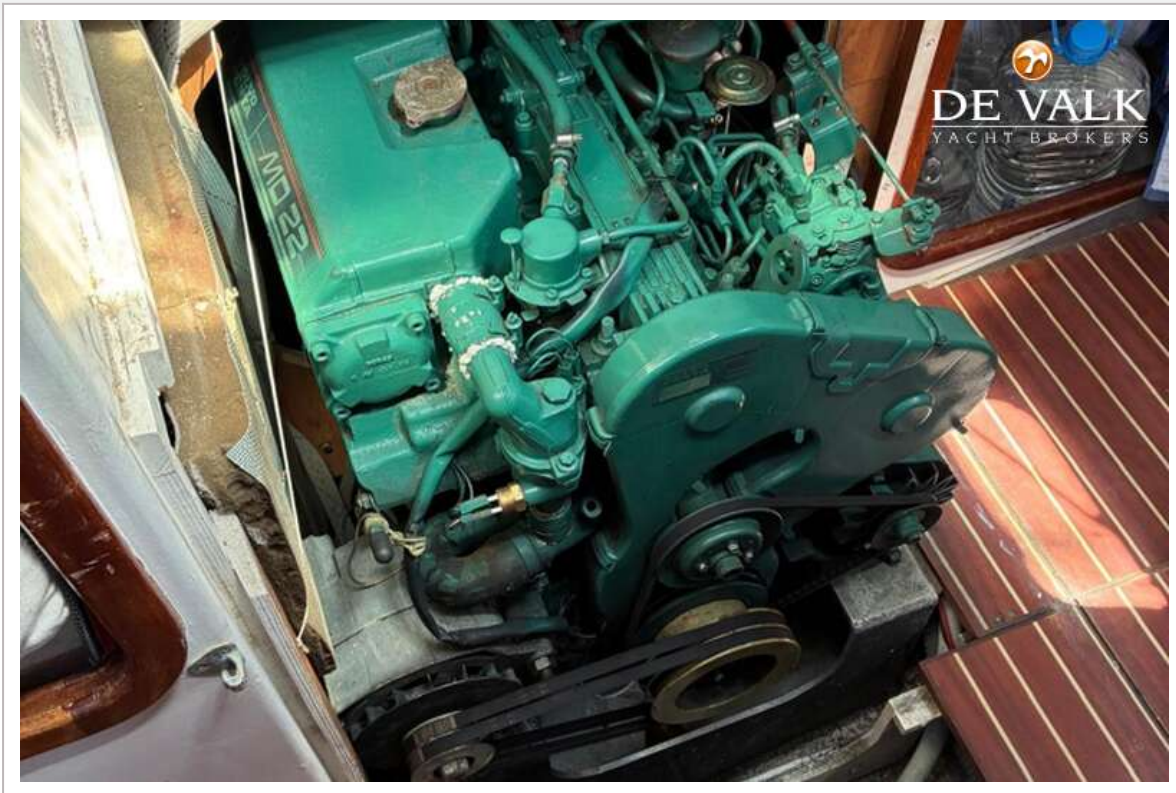
PANORAMER 40



PANORAMER 40



PANORAMER 40



PANORAMER 40

