



DE VALK
YACHT BROKERS



BENETEAU OCEANIS 60



DE VALK
YACHT BROKERS

BENETEAU OCEANIS 60

BROKER'S COMMENTS

Dream Yacht – Ready for Your Next Adventure This 2023 Beneteau Oceanis 60 is a beautifully appointed owner's version, presented in outstanding, like-new condition. Featuring elegant ALPI Oak throughout, a premium specification, a watermaker, and numerous high-end extras, she is fully equipped and ready for bluewater cruising. No waiting, no upgrades required-just step aboard, cast off the lines, and start your next adventure.

Oliver Stehula

SPECIFICATIONS

Dimensions	18.95 x 0.00 x 2.20 (m)	Builder	Beneteau
Built	2023	Cabins	3
Material	GRP	Berths	
Engine(s)	1 x Yanmar 4LV diesel	Hp/Kw	150.00 (hp), 110.40 (kw)
Asking price	€ 949.000 (VAT Not paid)	Lying	at sales office

CONTACT

Sales office	De Valk Palma	Telephone	+34 971 40 29 11
Address	Port. Cala Nova, Avda. Joan Miro, 327 07015 Palma de Mallorca ES	E-mail	palma@devalk.nl

DISCLAIMER

These particulars are given in good faith as supplied but cannot be guaranteed.



BENETEAU OCEANIS 60

GENERAL

Model	BENETEAU OCEANIS 60
Type	sailing yacht
LOA (m)	18,95
Draft (m)	2,20
Year built	2023
Builder	Beneteau
Country	France
Designer	Lorenzo Argento
Displacement (t)	22,5
Ballast (tonnes)	cast iron 5,6
CE norm	A
Hull material	GRP
Hull colour	white
Hull shape	hard chine
Keel type	Shallow-draft fin keel
Superstructure material	GRP
Deck material	teak
Deck finish	teak
Cockpit deck finish	teak
Antifouling (year)	2025
Window material	polycarbonate
Deckhatch	5x
Portholes	polymer 6x portlights
Fuel tank (litre)	aluminium 2x 250
Level indicator (fuel tank)	Ship Control System
Freshwater tank (litre)	polyethylene 4x 200l
Level indicator (freshwater)	Ship Control System
Blackwater tank (litre)	polyethylene 3x 60l
Level indicator (blackwater)	Ship Control System
Blackwater tank extraction	deck extraction + uw line



Wheel steering
Emergency tiller

Chain with wire, double, stainless steel with leather
yes

ACCOMMODATION

Cabins

3

Crew cabin

Skipper cabin replaced the sail locker of the foredeck

Crew berths

One

Interior

Alpikord oak

Floor

Alpikord oak floorings

Saloon

Long U-shaped bench seat and one Sofa facing the saloon,
leather

Headroom saloon (m)

2,02

Air-conditioning

reverse cycle airco 56.000 BTU

Chart table

Desk with drop-leaf & leather swivel navigator seat

Galley

Two part forward galley

Countertop

Corian Glacier White work surface with Alpi walnut moulded rails

Sink

stainless steel Rectangular stainless steel sink

Cooker

ENO Bretagne 3-ring gas stove 19 L oven with gimbal stove

Extractor

Miele / 230 Volt

Gas alarm

yes

Fridge

Stainless steel fridge, 157l stainless steel fridge drawer, 75l

Freezer

75 L deep freeze compartment with built-in 230 V ice maker

Hot water system

220V + engine Quick, 60l

Water pressure system

electrical Fresh and seawater for the kitchen, fresh for all

Manual and/or foot pump

yes

Dishwasher

For 9 persons

Owners cabin

Double bed, accessible from both sides 2,00 x 1,60m

Wardrobe

hanging/drawers/shelves

Bathroom

en suite

Toilet

In the bathroom

Toilet system

electric



BENETEAU OCEANIS 60

Wash basin	in the bathroom Work top in Corian Glacier White with Integrated polyester basi
Shower	Separate shower with plexiglass door - Wooden seat
Extra info	One full length mirror, LED indirect lighting
Guest cabin 1	Double bed 2,00 x 1,55m
Wardrobe	hanging/drawers/shelves
Bathroom	en suite
Toilet	In the bathroom
Toilet system	manual
Wash basin	Glacier White corian work top with sink
Shower	Separate shower - one mixer tap
Extra info	LED indirect lighting
Guest cabin 2	One Double bed, 2,00 x 1,55m
Wardrobe	hanging/drawers/shelves
Bathroom	shared
Toilet	In the bathroom
Toilet system	manual
Wash basin	Glacier White corian work top with sink and mixer tap
Shower	Separate shower - one mixer tap
Washing machine/dryer combi	Washer dryer: 8 kg for washing, 5 for dring (230V)
Tender garage	With electrical Tender launching system

MACHINERY

No of engines	1
Make	Yanmar
Type	4LV
HP	150
kW	110.40
Fuel	diesel
Year installed	2023
Engine cooling system	freshwater heat exchanger



BENETEAU OCEANIS 60

Drive	shaft
Engine controls	electrical & bowden cable
Gearbox	mechanical
Bowthruster	Sleipner SRVP 100/ 185T 24 V tunnel bow thruster
Sternthruster	Retractable stern thruster 24V
Exhaust	watercooled
Shaft lubrication	water
Manual bilge pump	yes
Electric bilge pump	yes
Bilge alarm	yes
Generator	silent separator Cummins, 11 kVA 230 V / 50 Hz
Running hours generator	46
Batteries	24 Volt Power System
Start battery	1 x 50 Ah
Service battery	8 x AGM 140Ah
Bowthruster battery	2x 12V/ 50 Ah
Battery monitor	Ship Control
Battery charger	24Volt / 100 Ah
Inverter	2000Watt
Shorepower	with cable
Watermaker	Watermaker (100 l/h / 26 US Gal/h - 24/230V)

NAVIGATION

Windset	yes
VHF	Ray 91
VHF handheld	RAY 90 wireless handheld
Autopilot	Raymarine P70s with S100 remote control
Plotter	12" Axiom 2 Pro multi-function touchscreen
AIS transponder	yes
AIS transceiver	700 AIS



EQUIPMENT

Cockpit cover	Full closure of the rigid bimini (2 sides + aft), Charcoal Grey
Bimini	Semi rigid Bimini cockpit top with LED lighting
Cockpit cushions	yes
Cockpit table	Two Electrical bases for the cockpit tables for use as sundeck
Bathing platform	Fully opening transom, convertible to bathing platform, electric
Boarding ladder	stainless steel Three Folding access steps to the cockpit
Gangway	Integrated hydraulic gangway, on port
Deck shower	yes
Anchor	Delta 40 kg, stainless steel
Anchor chain	70m, 12mm,
Chain counter	yes
Capstan	Retractable capstan (Bow)
Deck wash	Salt and freshwater
Life raft	container
Life raft (pers)	12
Fenders	4 x XL, 2 x L
Mooring lines	4 x 18mm/ 15m, 2 x 18mm/ 15m
TV	Two
Radio	Fusion Apollo RA 670
Sub-woofer	B&W
Cockpit speakers	2 x Fusion
Speakers in salon	Fusion with subwoofer

RIGGING

Rigging	sloop
Standing rigging	wire
Brand mast	Sparcraft
Material mast	Aluminium mast with in-mast furling
Spreaders	Two Aft swept spreaders with LED- lights
Mainsail	77,00m ² , Hydranet



Genoa	75,00m ² , Hydranet
Genoa furler	Electric
Boomvang	mechanical and tackle
Genoa sheetwinches	Two H70.2STA EH- 24 Volt
Spinnaker winch	Two H60.2Staeh- 24 Volt



BENETEAU OCEANIS 60



BENETEAU OCEANIS 60



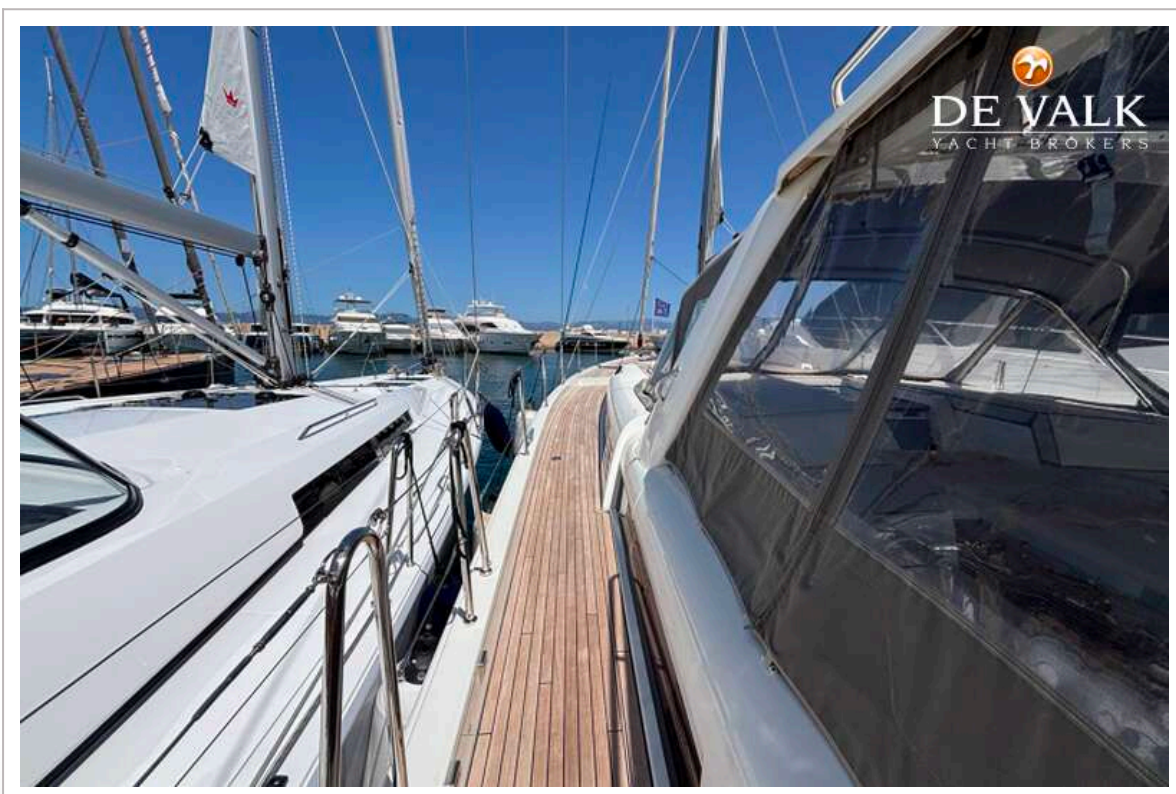
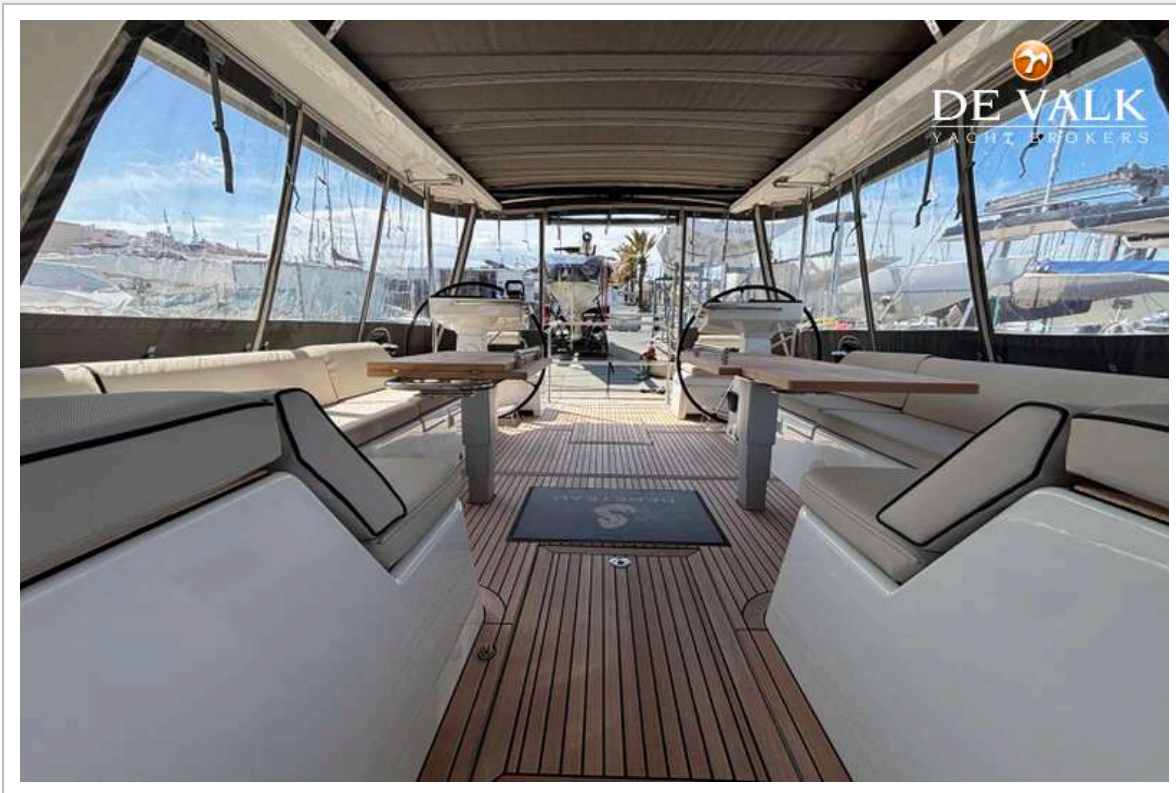
BENETEAU OCEANIS 60



BENETEAU OCEANIS 60



BENETEAU OCEANIS 60



BENETEAU OCEANIS 60



BENETEAU OCEANIS 60



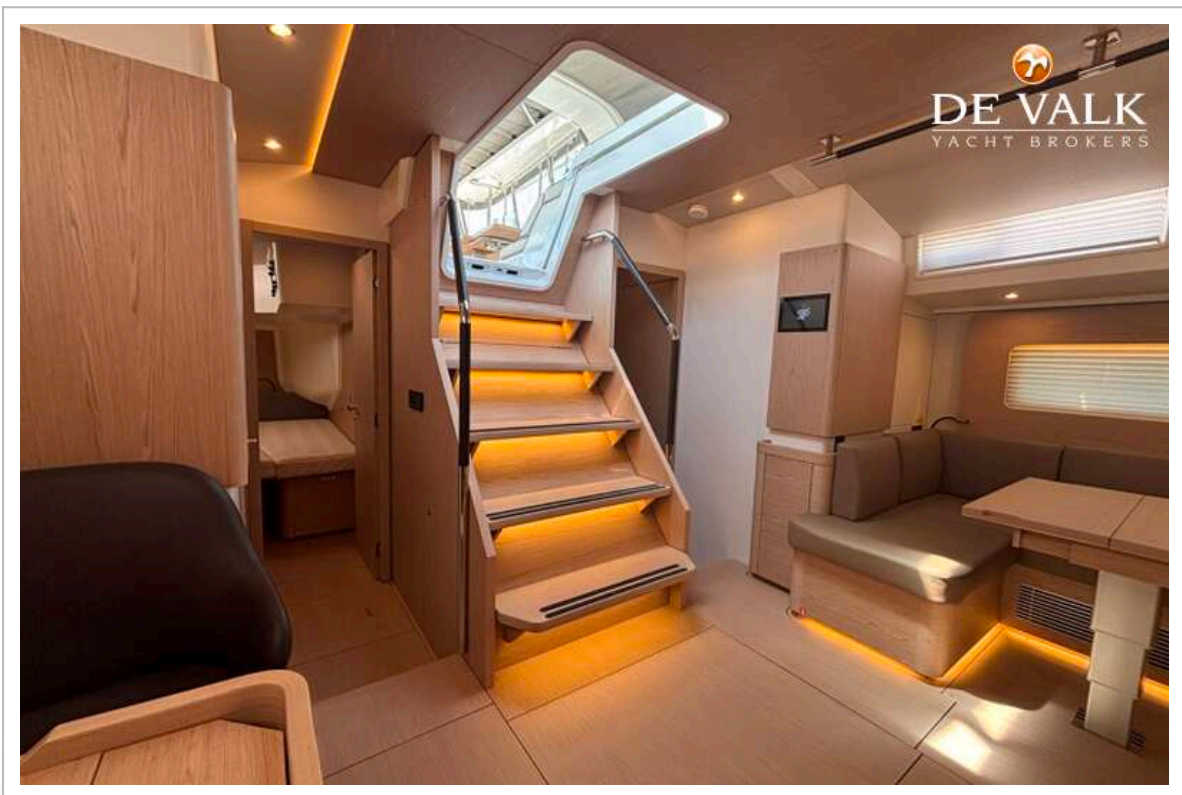
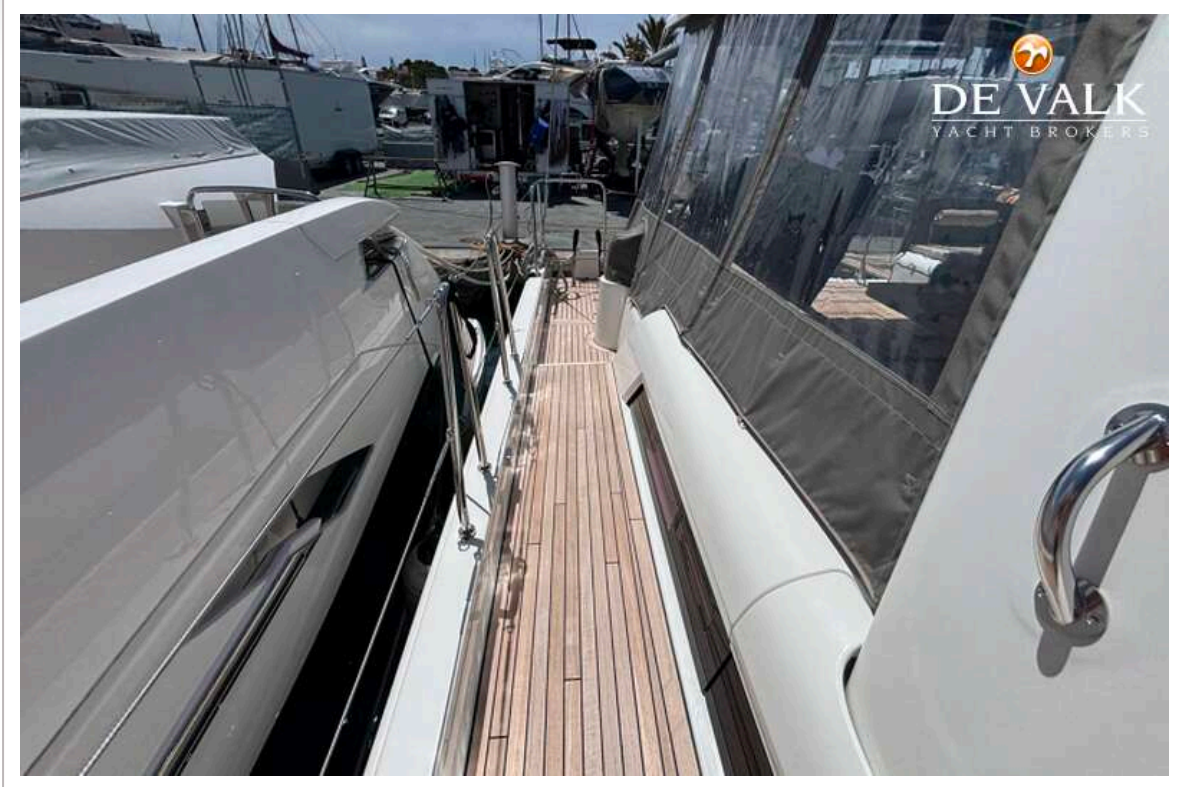
BENETEAU OCEANIS 60



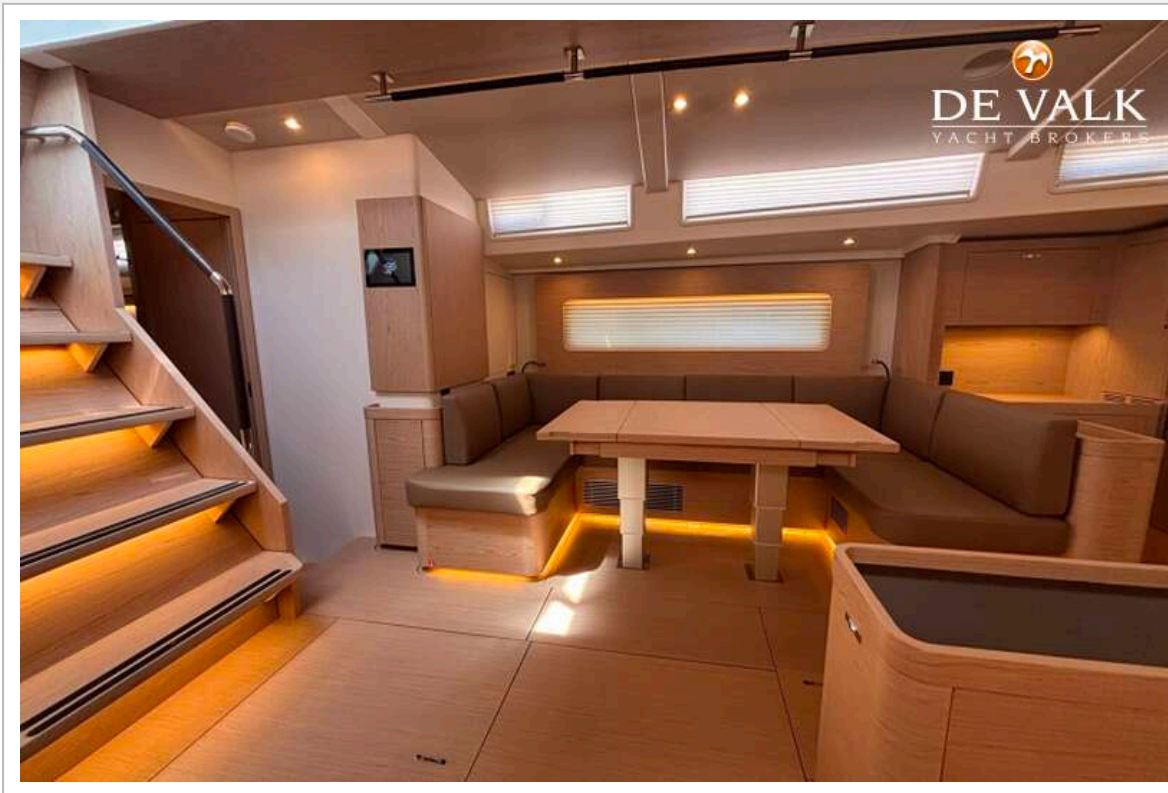
BENETEAU OCEANIS 60



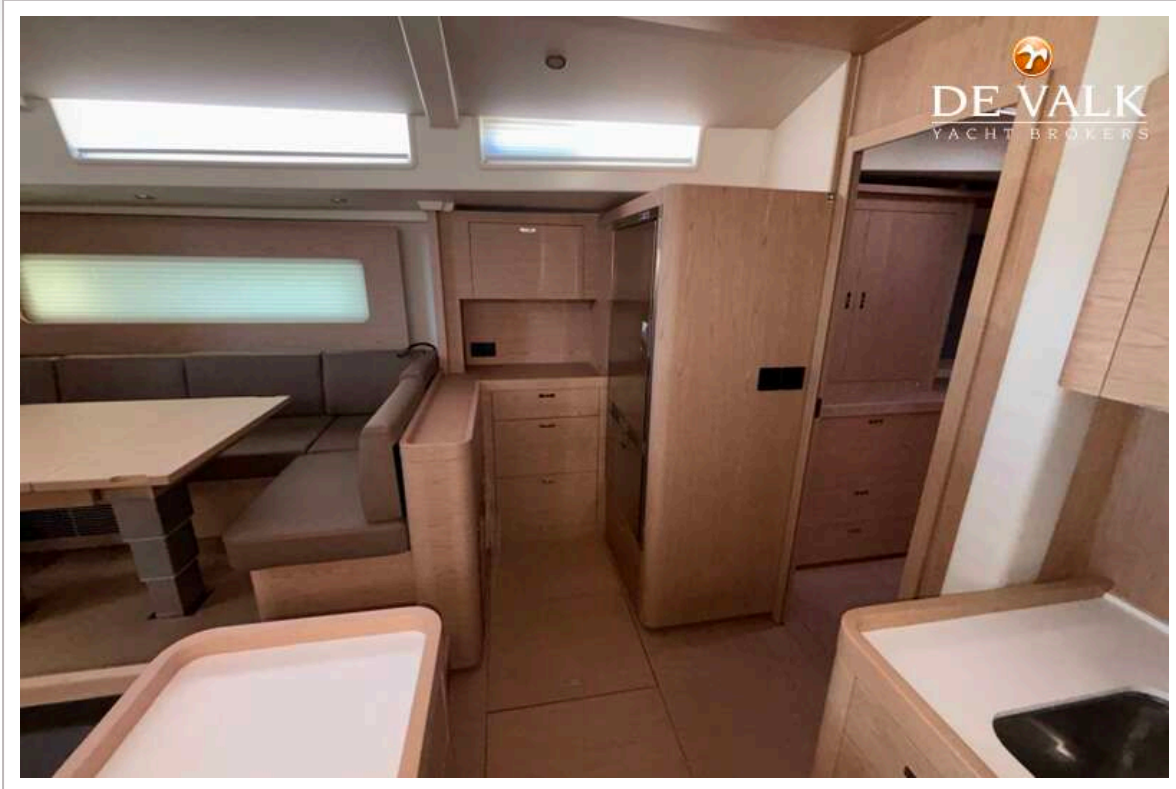
BENETEAU OCEANIS 60



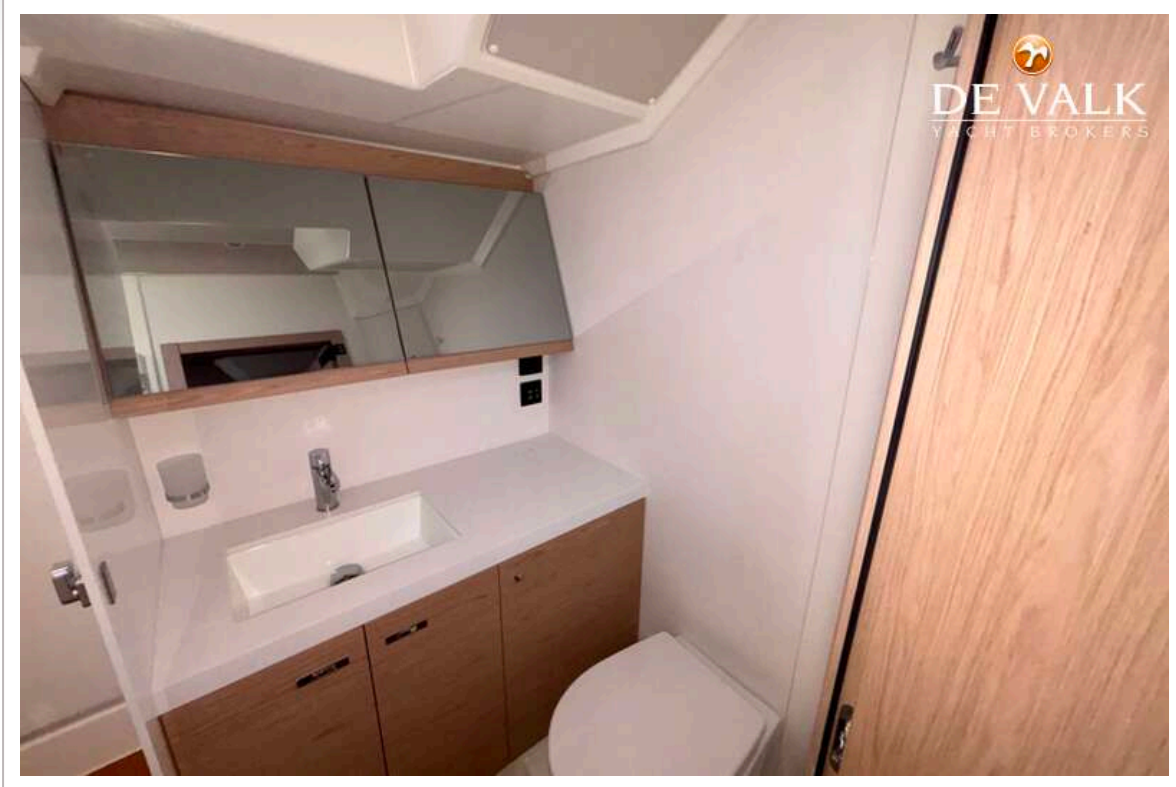
BENETEAU OCEANIS 60



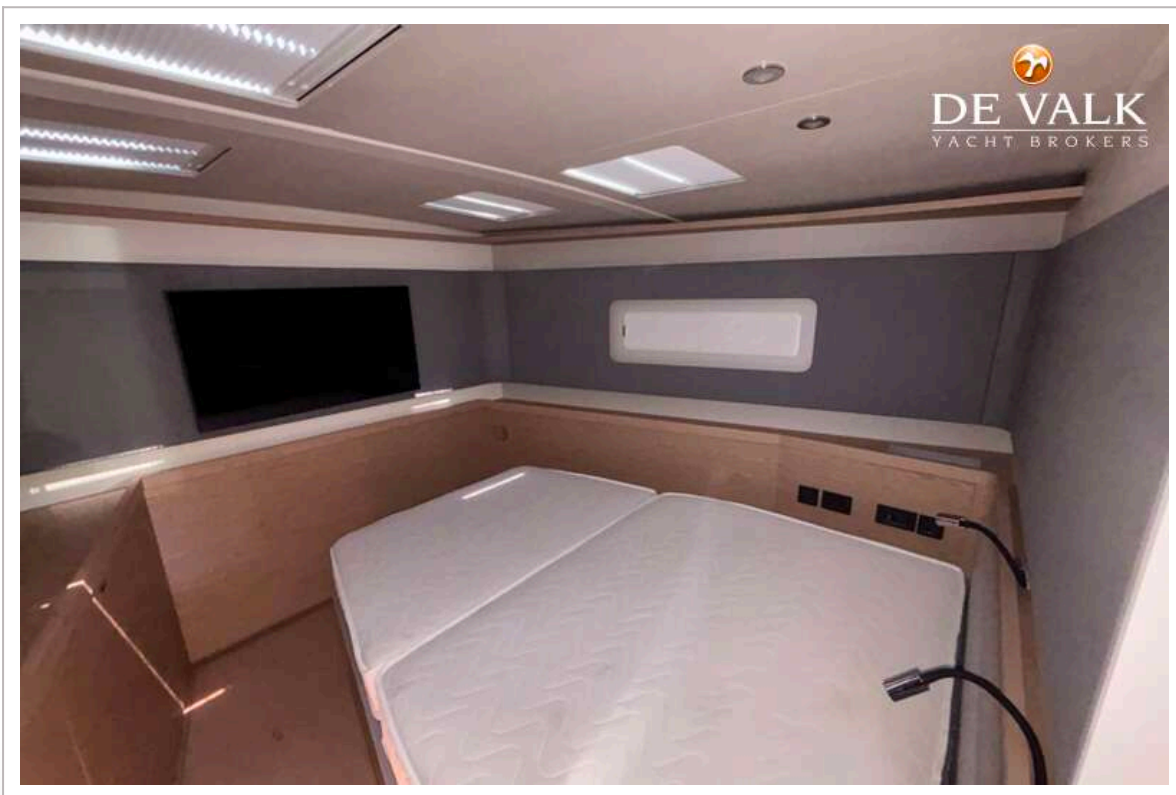
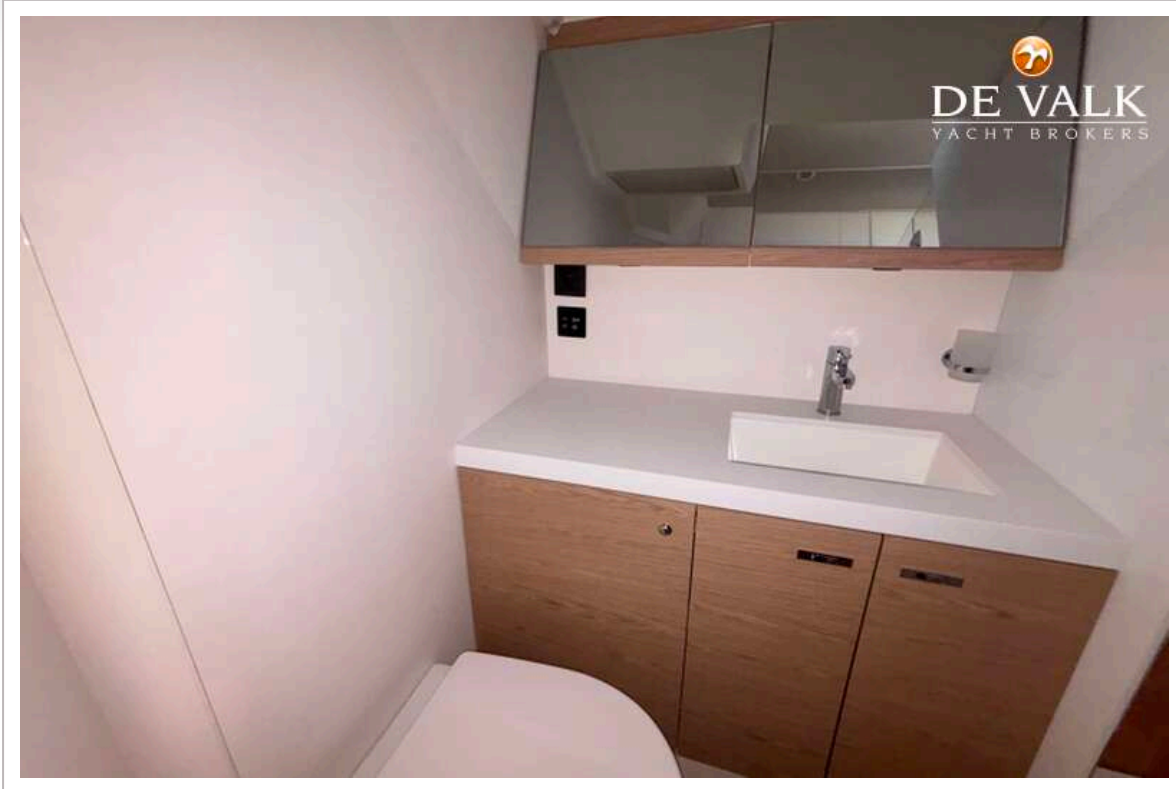
BENETEAU OCEANIS 60



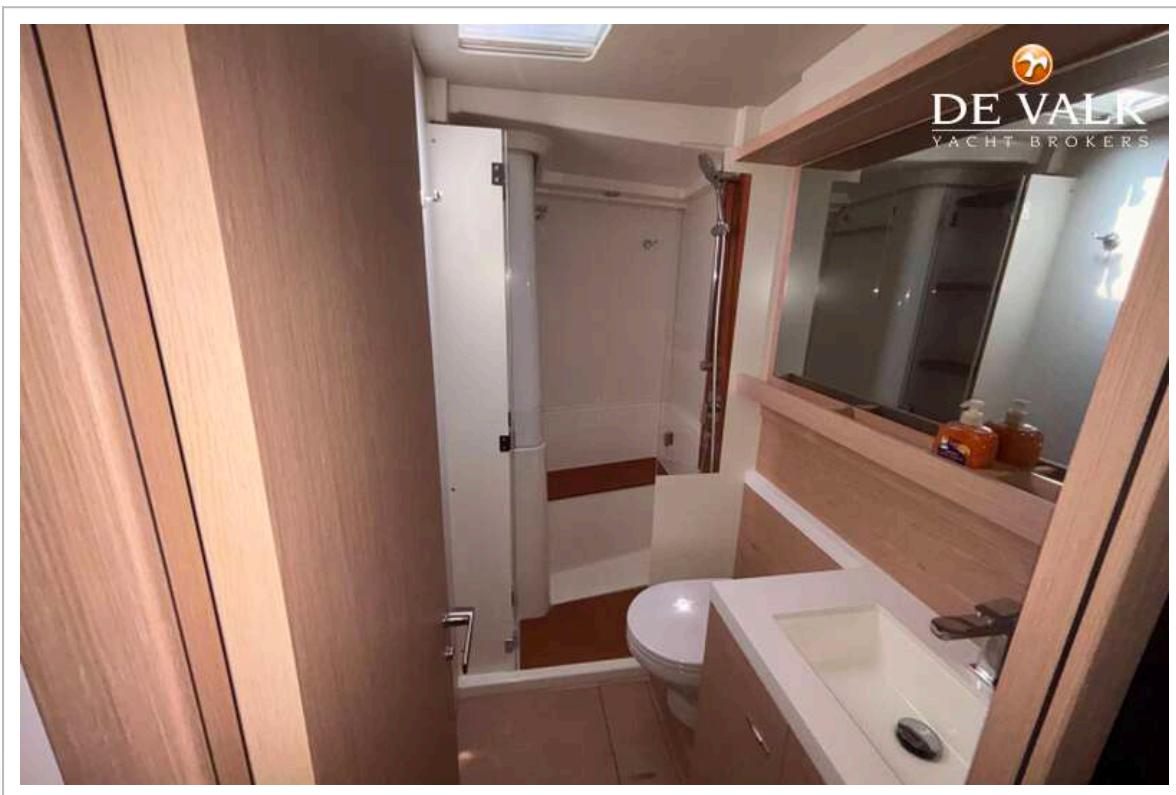
BENETEAU OCEANIS 60



BENETEAU OCEANIS 60



BENETEAU OCEANIS 60



BENETEAU OCEANIS 60

