



DE VALK  
YACHT-BROKERS



## SAXDOR 320 GTC



DE VALK  
YACHT BROKERS

## BROKER'S COMMENTS

Step aboard this young and well maintained Saxdor 320. This modern sports cruiser combines Scandinavian design, outstanding performance, and premium comfort for both day trips and weekends. Powered by reliable Mercury outboard engines, she delivers impressive speed, fuel efficiency, and excellent handling. Her innovative hull design ensures a smooth, stable, and enjoyable ride in a wide range of conditions. The wheelhouse, high-quality finishes, and clever layout make this Saxdor 320 GTC the perfect choice. Available for viewing by appointment in Dordrecht (NL) Contact us for more information.

*Arjen Hoeksma*

## SPECIFICATIONS

<b>Dimensions</b>	10.28 x 3.10 x 0.49 (m)	<b>Builder</b>	Saxdor Yachts
<b>Built</b>	2022	<b>Cabins</b>	1
<b>Material</b>	GRP	<b>Berths</b>	3
<b>Engine(s)</b>	2 x Mercury V6 225pk petrol	<b>Hp/Kw</b>	2 x 225.00 (hp), 165.60 (kw)
<b>Asking price</b>	€ 239.000 (VAT Paid)	<b>Lying</b>	The Netherlands

## CONTACT

<b>Sales office</b>	De Valk Dalmatia	<b>Telephone</b>	0031 653 299 244
<b>Address</b>	Ul. Velimira Skorpika 22000 Sibenik HR	<b>E-mail</b>	dalmatia@devalk.nl

## DISCLAIMER

These particulars are given in good faith as supplied but cannot be guaranteed.



# SAXDOR 320 GTC

## GENERAL

Model	SAXDOR 320 GTC
Type	motor yacht
LOA (m)	10,28
Beam (m)	3,10
Draft (m)	0,49
Year built	2022
Launched	2023
Builder	Saxdor Yachts
Country	Finland
CE norm	B
Hull material	GRP
Hull colour	white
Hull shape	deep-V Twin-stepped V21° Hull
Superstructure material	GRP
Rubbing strake	yes
Deck finish	synthetic teak
Cockpit deck finish	synthetic teak
Antifouling (year)	yes
Fuel tank (litre)	polyethylene 428 liter
Level indicator (daytank)	yes
Freshwater tank (litre)	polyethylene 117 liter
Wheel steering	yes
Inside helm position	yes
Extra info	VAT deductible

## ACCOMMODATION

Cabins	1
Berths	3
Aft deck	yes
Saloon	yes



# SAXDOR 320 GTC

Headroom saloon (m)	2,00m
Heating	Webasto AT4000
Air-conditioning	yes
Navigation center	Simrad info display 2x 12" displays
Dinette to convert into berth	yes
Sliding door to aft deck	yes
Galley	yes
Countertop	yes
Fridge	Isotherm
Freezer	2x
Hot water system	yes
Water pressure system	yes
Owners cabin	yes
Bed length (m)	2,00m
Wardrobe	drawers and shelves
Bathroom	yes
Toilet	en suite
Toilet system	electric
Wash basin	in the bathroom Glass
Shower	yes

## MACHINERY

No of engines	2
Make	Mercury
Type	V6 225pk
HP	225
kW	165.60
Fuel	petrol
Maximum speed (kn)	40
Engine hours	165
Engine cooling system	yes



Engine controls	yes
Secondary engine	1 lever sailing
Engine controls	electrical
Bowthruster	Sleipner SE50/140s 50kg
Electric bilge pump	yes
Start battery	2x 105Ah
Service battery	1x 110Ah
Bowthruster battery	Semi traction 105Ah
Battery charger	Mastervolt Chargemaster 12V/25-3
Shorepower	yes
Trimtabs	Automatic

## NAVIGATION

Electric compass	yes
Depth sounder/log	yes
GPS	yes
Plotter	yes
Plotter/GPS	yes
Navigation lights	yes
Extra info	Pro Safe FS30 Galvanic Isolator 30A
Extra info	Water Ski Pole

## EQUIPMENT

Fixed windscreen	With electric opening roof
Cockpit cover	yes
Cockpit cushions	Brown
Cockpit table	Adjustable into a bed for one adult or two children
Bathing platform	yes
Boarding ladder	yes
Deck shower	yes
Anchor	yes



<b>Fenders</b>	yes
<b>Radio</b>	Fusion
<b>Cockpit speakers</b>	yes
<b>Speakers in salon</b>	yes
<b>Fire extinguisher</b>	yes
<b>Extra info</b>	Marine Carbon Monoxide Alarm
<b>Extra info</b>	Cover for front and aft sofa
<b>Extra info</b>	Side glasses with opening windows



# SAXDOR 320 GTC



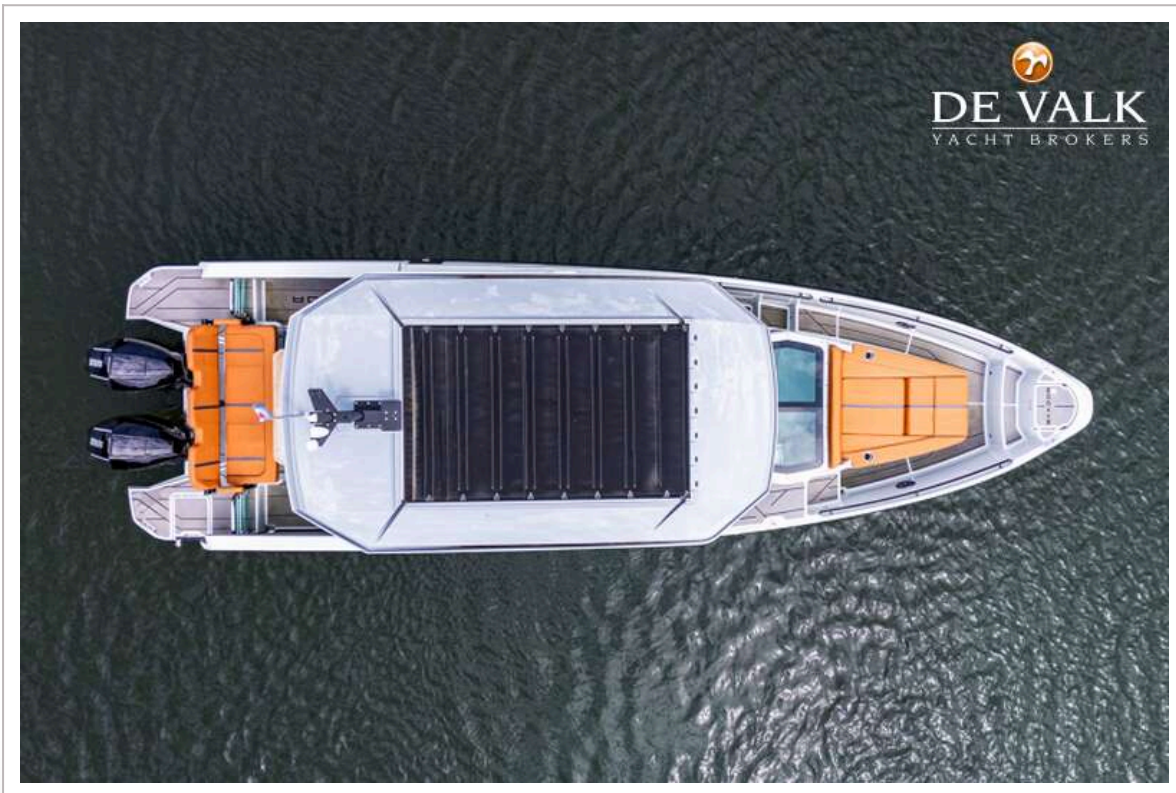
# SAXDOR 320 GTC



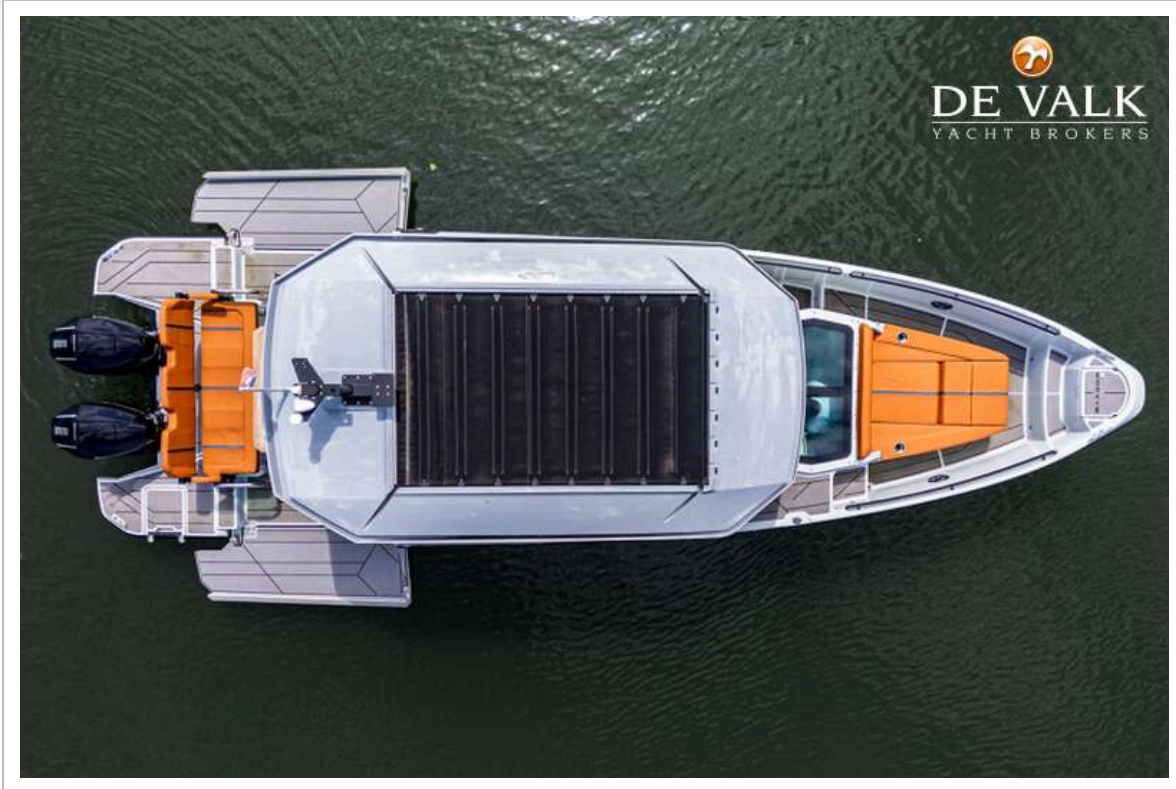
# SAXDOR 320 GTC



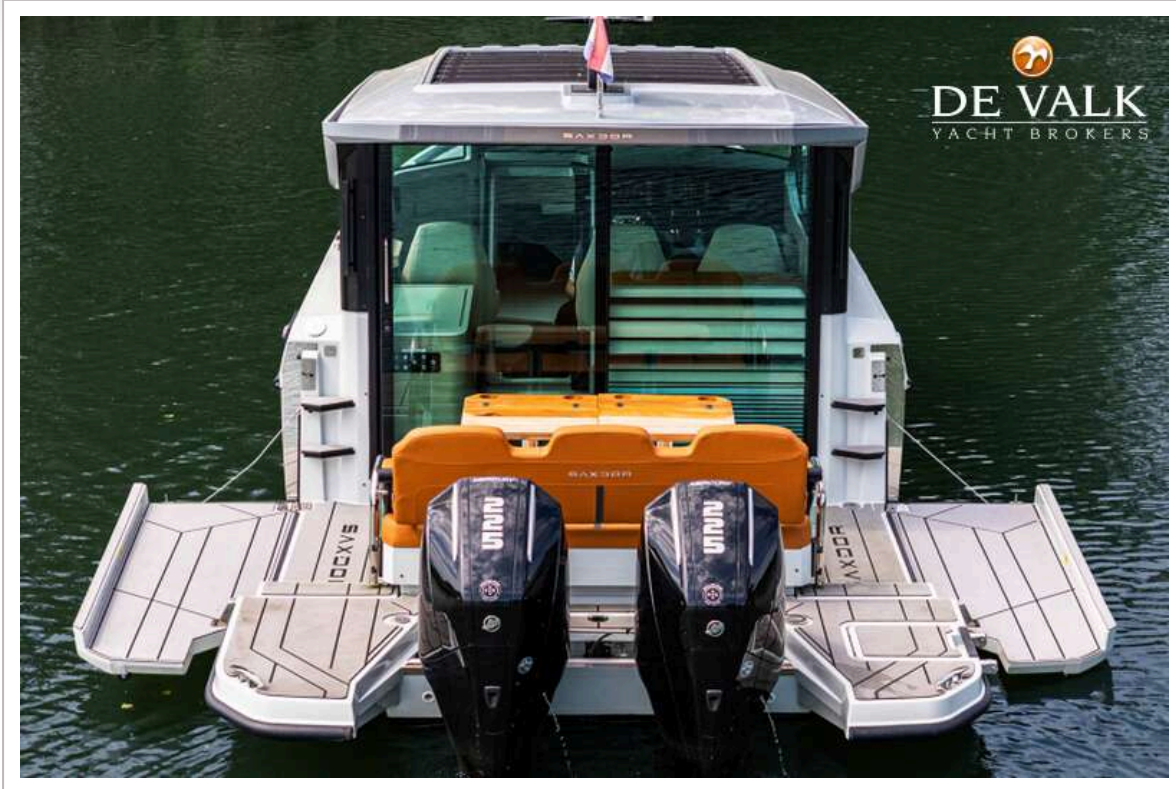
# SAXDOR 320 GTC



# SAXDOR 320 GTC



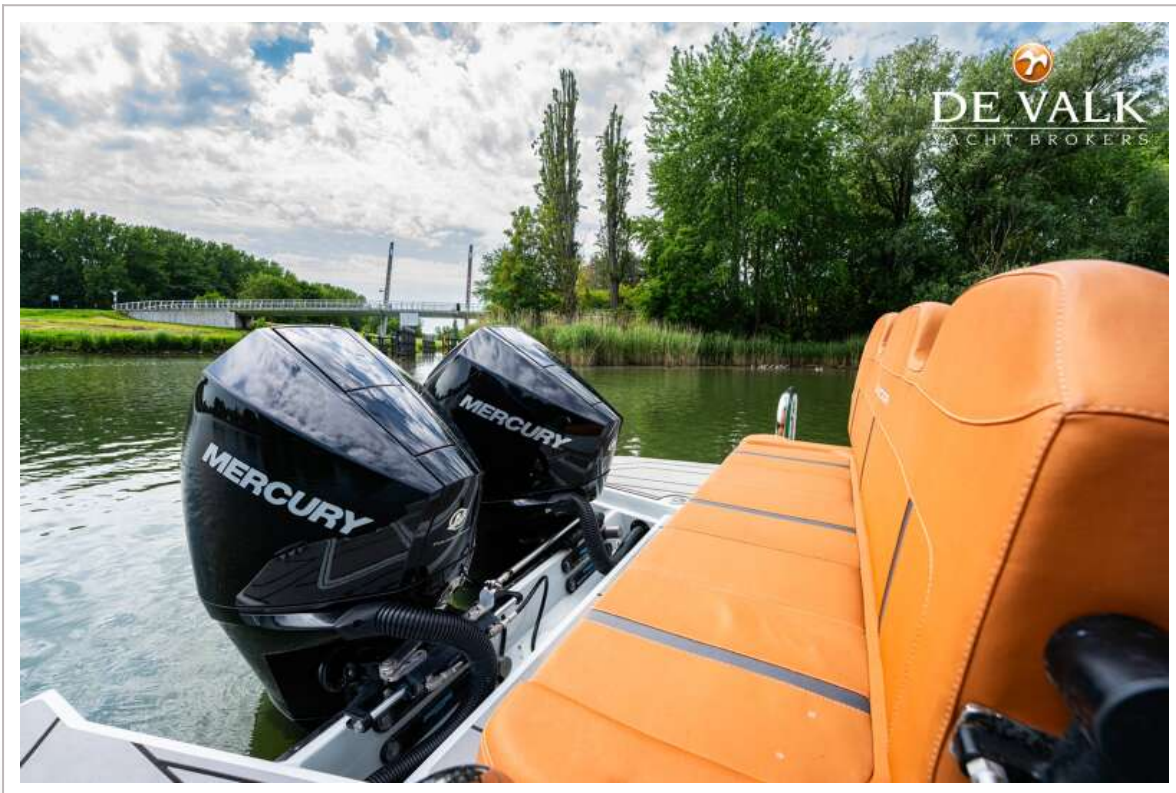
# SAXDOR 320 GTC



# SAXDOR 320 GTC



# SAXDOR 320 GTC



# SAXDOR 320 GTC



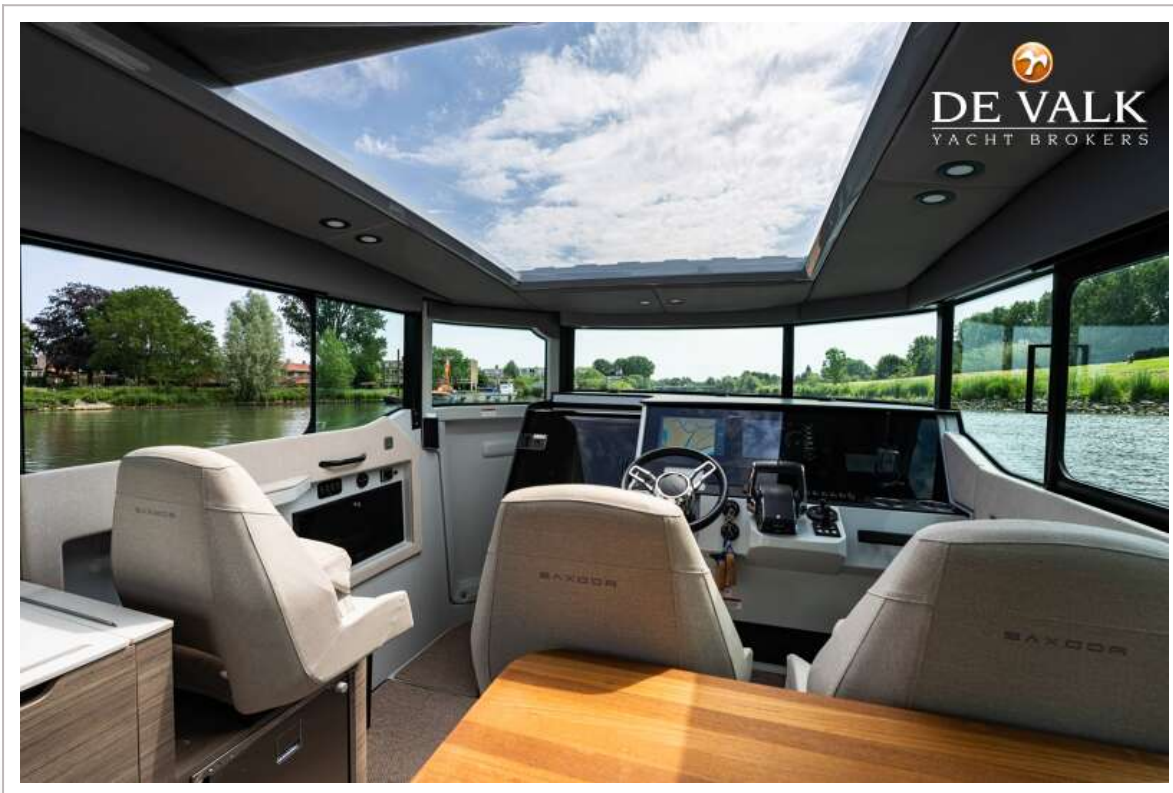
# SAXDOR 320 GTC



# SAXDOR 320 GTC



# SAXDOR 320 GTC



# SAXDOR 320 GTC



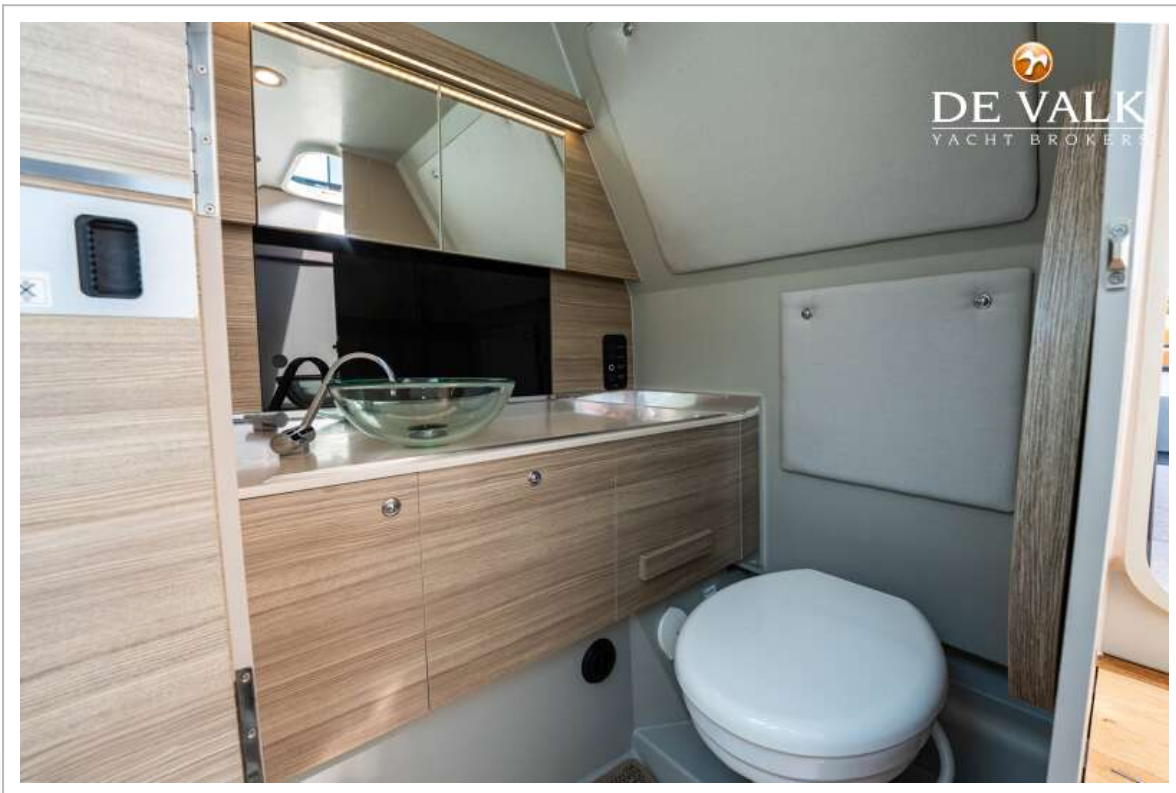
# SAXDOR 320 GTC



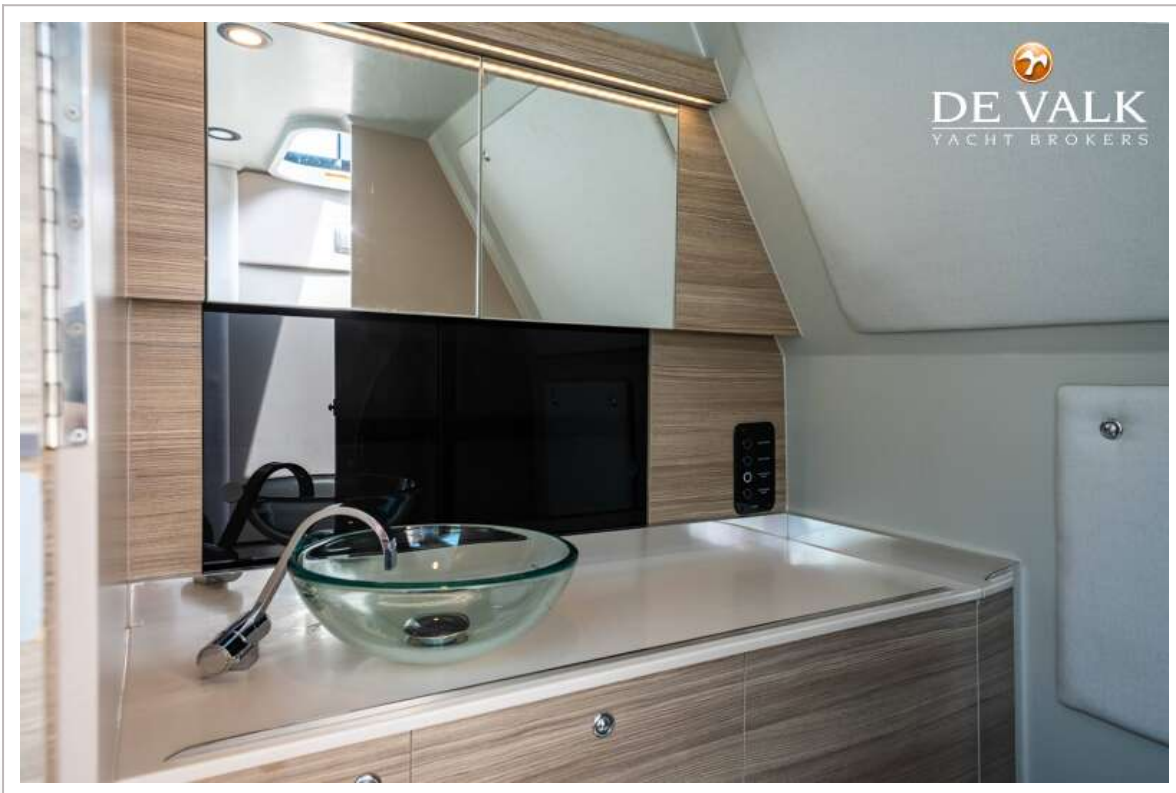
# SAXDOR 320 GTC



# SAXDOR 320 GTC



# SAXDOR 320 GTC



# SAXDOR 320 GTC

