



DE VALK
YACHT BROKERS



GRAND BANKS 46 CLASSIC



DE VALK
YACHT BROKERS

GRAND BANKS 46 CLASSIC

BROKER'S COMMENTS

The iconic Grand Banks 46 Classic. She is the popular 3-stateroom with the galley up version of the classic, with 2 enclosed heads. The salon has beautiful wood throughout, a full galley, plenty of seating, an interior helm station. The flybridge is covered by a large double bimini top, upperdeck helm station, loads of seating, a table. Powered by the preferred Caterpillar 3208 375hp diesels, with trim tabs and a bow thruster, she is responsive and easy to handle. Thanks to constant annual maintenance, this boat is always ready to sail in all seasons, guaranteeing the comfort and safety.

Giovanni Spagnuolo

SPECIFICATIONS

| | | | |
|---------------------|-------------------------------|----------------|------------------------------|
| Dimensions | 14.35 x 4.50 x 1.33 (m) | Builder | American Marine PTE LTD |
| Built | 1993 | Cabins | 3 |
| Material | GRP | Berths | 6 |
| Engine(s) | 2 x Caterpillar 3208TA diesel | Hp/Kw | 2 x 375.00 (hp), 276.00 (kw) |
| Asking price | € 215.000 (VAT Paid) | Lying | Italy |

CONTACT

| | | | |
|---------------------|---|------------------|-----------------|
| Sales office | De Valk Rome | Telephone | +39 06 65 81221 |
| Address | c/o Nautilus Marina Srl, Via Monte Cadria, 127 00054 Fiumicino Roma IT | E-mail | rome@devalk.nl |

DISCLAIMER

These particulars are given in good faith as supplied but cannot be guaranteed.



GRAND BANKS 46 CLASSIC

GENERAL

| | |
|-------------------------------------|-------------------------|
| Model | GRAND BANKS 46 CLASSIC |
| Type | motor yacht |
| LOA (m) | 14,35 |
| LWL (m) | 13,65 |
| Beam (m) | 4,50 |
| Draft (m) | 1,33 |
| Year built | 1993 |
| Builder | American Marine PTE LTD |
| Country | Singapore |
| Designer | American Marine |
| Displacement (t) | 18 |
| CE norm | A |
| Hull material | GRP |
| Hull colour | white |
| Superstructure material | GRP |
| Deck finish | teak |
| Cockpit deck finish | teak |
| Dorades | yes |
| Flybridge | yes |
| Flybridge suncover | yes |
| Radar arch | yes |
| Mast can be lowered | yes |
| Fuel tank (litre) | steel 2270 |
| Level indicator (fuel tank) | yes |
| Freshwater tank (litre) | steel 1077 |
| Level indicator (freshwater) | yes |
| Wheel steering | cable steering |
| Inside helm position | yes |
| Flybridge helm position | yes |



GRAND BANKS 46 CLASSIC

ACCOMMODATION

| | |
|--------------------------------|-------------------------|
| Cabins | 3 |
| Berths | 6 |
| Interior | teak |
| Pilot house/deck saloon | yes |
| Heating | central hot water |
| Air-conditioning | reverse cycle airco |
| Navigation center | yes |
| Chart table | yes |
| Aft Cabin | yes |
| Galley | yes |
| Countertop | corian |
| Sink | stainless steel |
| Cooker | calor gas |
| Extractor | yes |
| Gas alarm | yes |
| Fridge | yes |
| Hot water system | yes |
| Water pressure system | yes |
| Dishwasher | yes |
| Owners cabin | double bed + single bed |
| Wardrobe | yes |
| Bathroom | en suite |
| Toilet | en suite |
| Toilet system | electric |
| Wash basin | in the bathroom |
| Shower | separate |
| Guest cabin 2 | twin single |
| Wardrobe | hanging/drawers/shelves |
| Bathroom | separate |
| Toilet | en suite |



GRAND BANKS 46 CLASSIC

| | |
|-----------------|----------|
| Toilet system | electric |
| Shower | yes |
| Washing machine | yes |

MACHINERY

| | |
|-------------------------|---------------------------------|
| No of engines | 2 |
| Make | Caterpillar |
| Type | 3208TA |
| HP | 375 |
| kW | 276 |
| Fuel | diesel |
| Year installed | 1993 |
| Engine hours | 2410 2412 |
| Engine cooling system | freshwater heat exchanger |
| Drive | shaft |
| Shaft seal | yes |
| Engine controls | yes |
| Bowthruster | electric |
| Generator | silent separator Onan 6.5 MDKDP |
| Running hours generator | 1202 |
| Batteries | 8 |
| Start battery | 2 |
| Service battery | 3 X 200 ah |
| Generator battery | 1 |
| Bowthruster battery | 2 |
| Battery charger | yes |
| Shorepower | yes |
| Trimtabs | BENNETT |

NAVIGATION

| | |
|---------|-----------------------|
| Compass | DANFORTH COSTELLATION |
|---------|-----------------------|



GRAND BANKS 46 CLASSIC

| | |
|------------------------|--------------------------------|
| Compass on flybridge | yes |
| Depth sounder | RAYMARINE ST 60 |
| Depth sounder/log | yes |
| Log | VDO SUMLOG |
| Windset | RAYMARINE ST60 |
| VHF | ICOM M423G GPS SAILOR RT 20248 |
| VHF handheld | ICOM ICM33 |
| Autopilot | Raymarine ST 7000 |
| Rudder angle indicator | VDO |
| Radar | 1940 RDP078 FURUNO |
| GPS | NAVIONICS |
| Plotter | GEONAV 11 FLASH NAVIONICS |
| Plotter/GPS | GEONAV 11 PLUS NAVIONICS |
| Radar/plotter | yes |
| Navtex | NAV 4 PLUS ICS |
| Camera | yes |

EQUIPMENT

| | |
|------------------|--------------------|
| Bimini | yes |
| Cockpit cushions | yes |
| Bathing platform | yes |
| Bow ladder | yes |
| Gangway | yes |
| Deck shower | yes |
| Anchor | BRUCE |
| Anchor chain | 10 mm. |
| Chain counter | yes |
| Windlass | LOFRANS TIGER 1500 |
| Dinghy | rigid hull AVON |
| Outboard | MERCURY 9 HP |
| Outboard support | yes |



GRAND BANKS 46 CLASSIC

| | |
|-------------------|-----|
| TV | yes |
| Speakers in salon | yes |



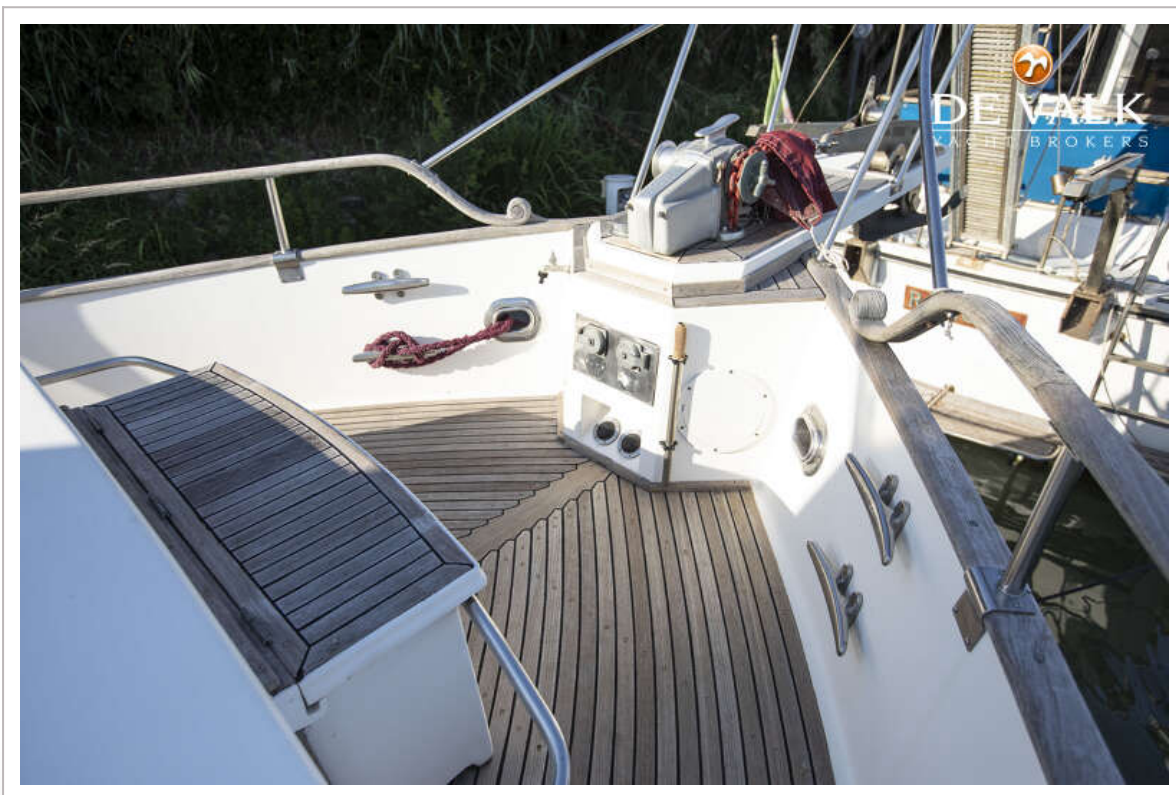
GRAND BANKS 46 CLASSIC



GRAND BANKS 46 CLASSIC



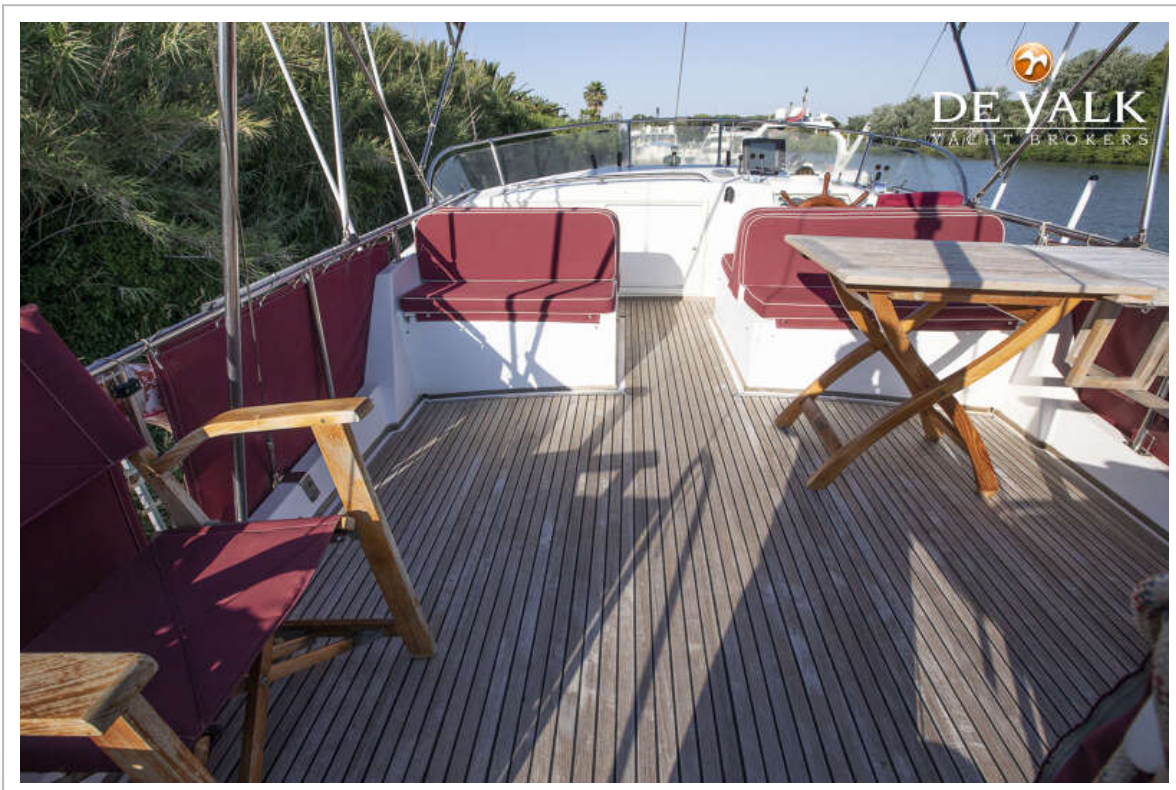
GRAND BANKS 46 CLASSIC



GRAND BANKS 46 CLASSIC



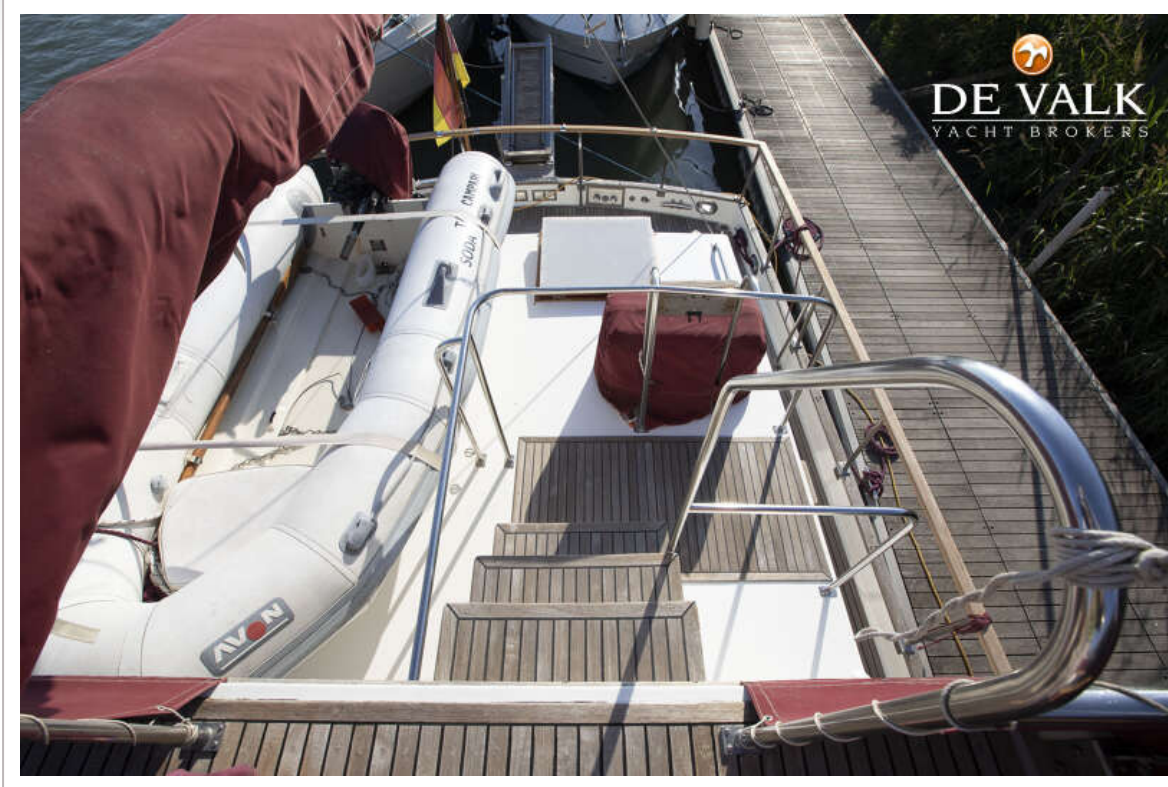
GRAND BANKS 46 CLASSIC



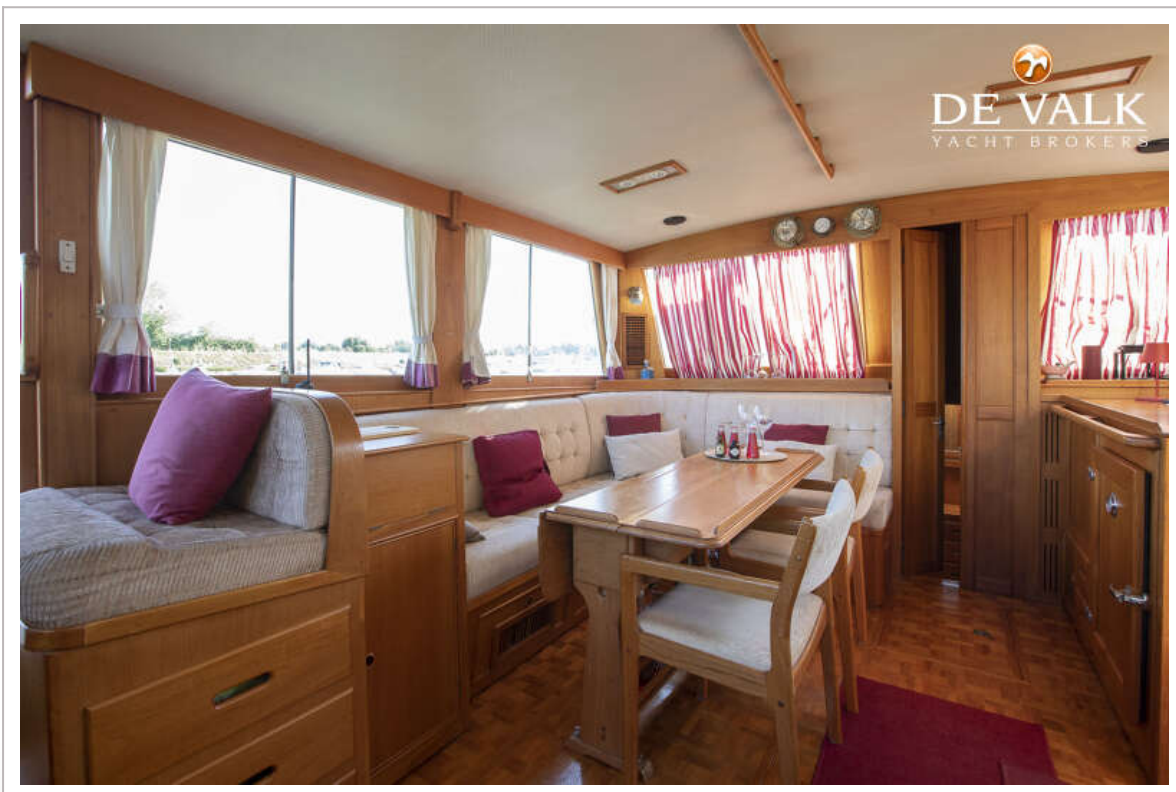
GRAND BANKS 46 CLASSIC



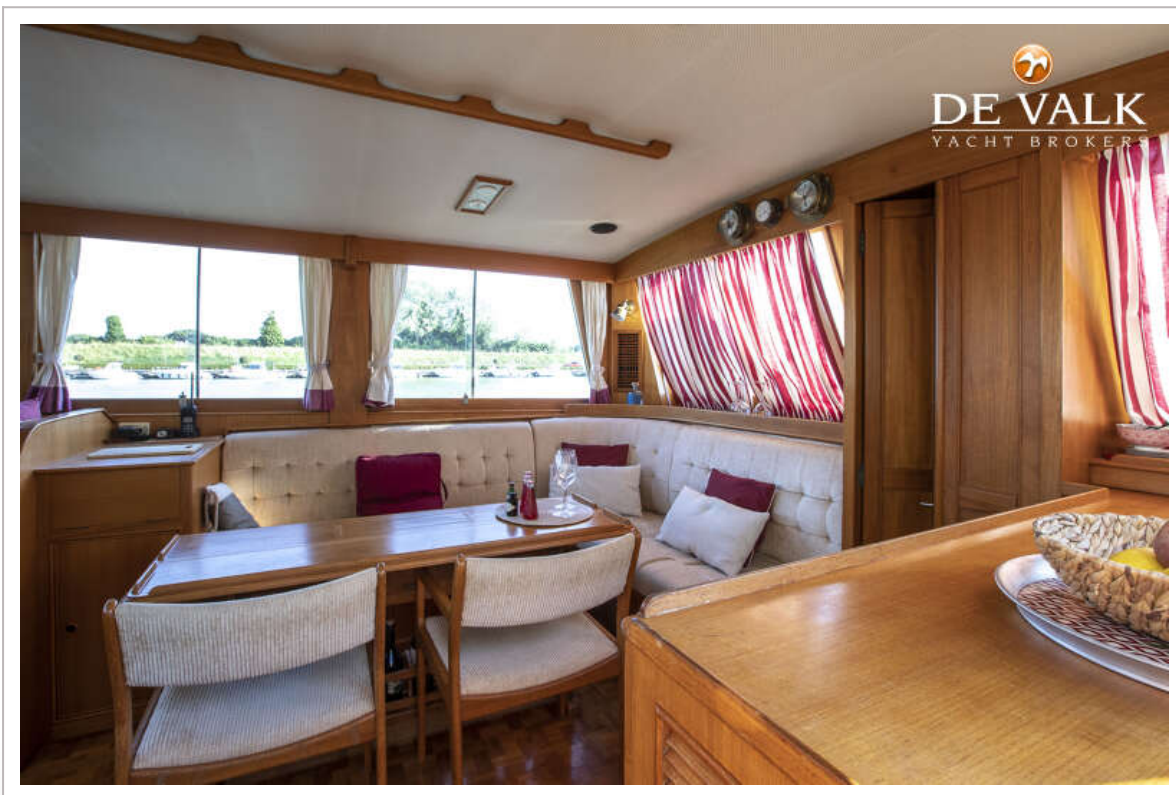
GRAND BANKS 46 CLASSIC



GRAND BANKS 46 CLASSIC



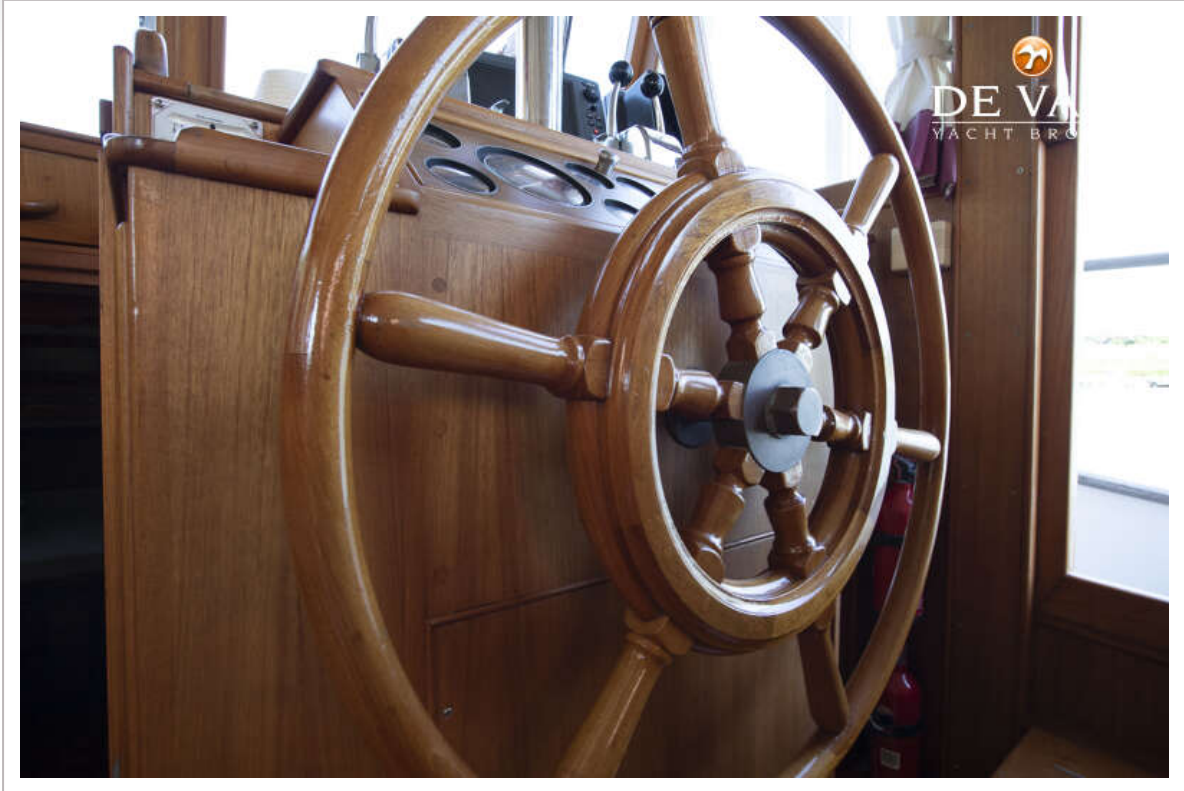
GRAND BANKS 46 CLASSIC



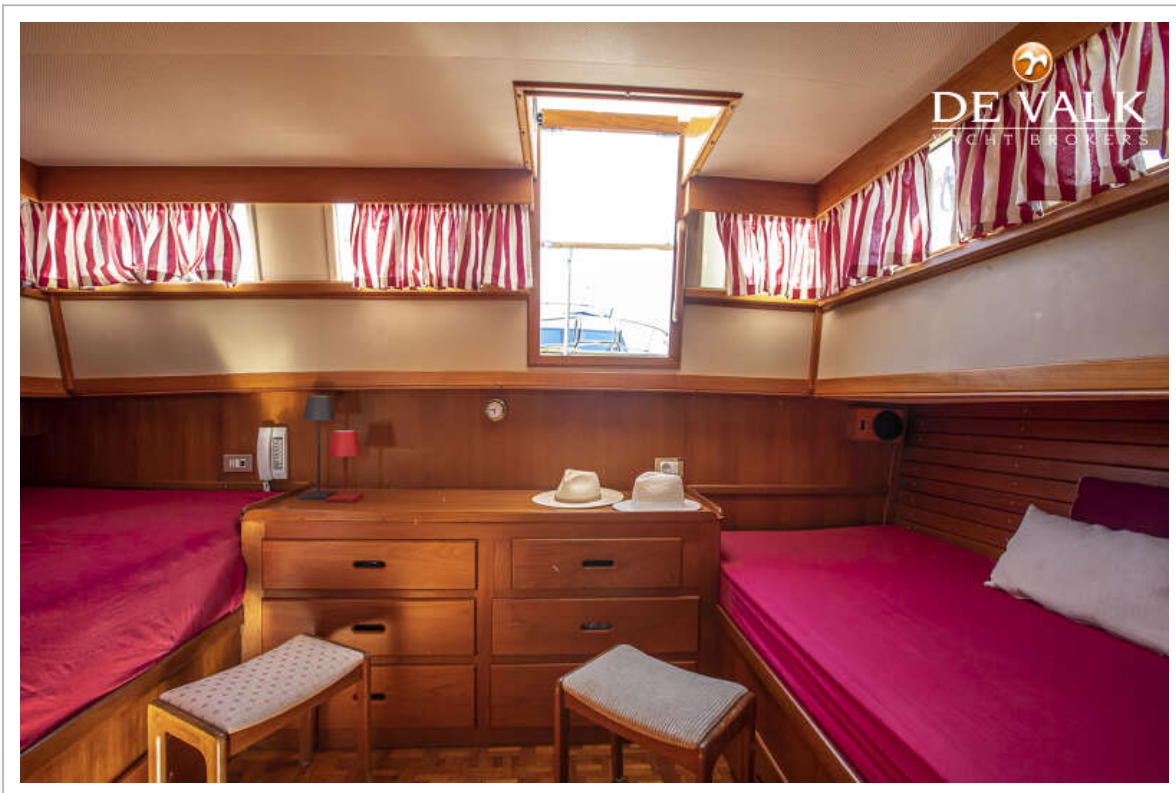
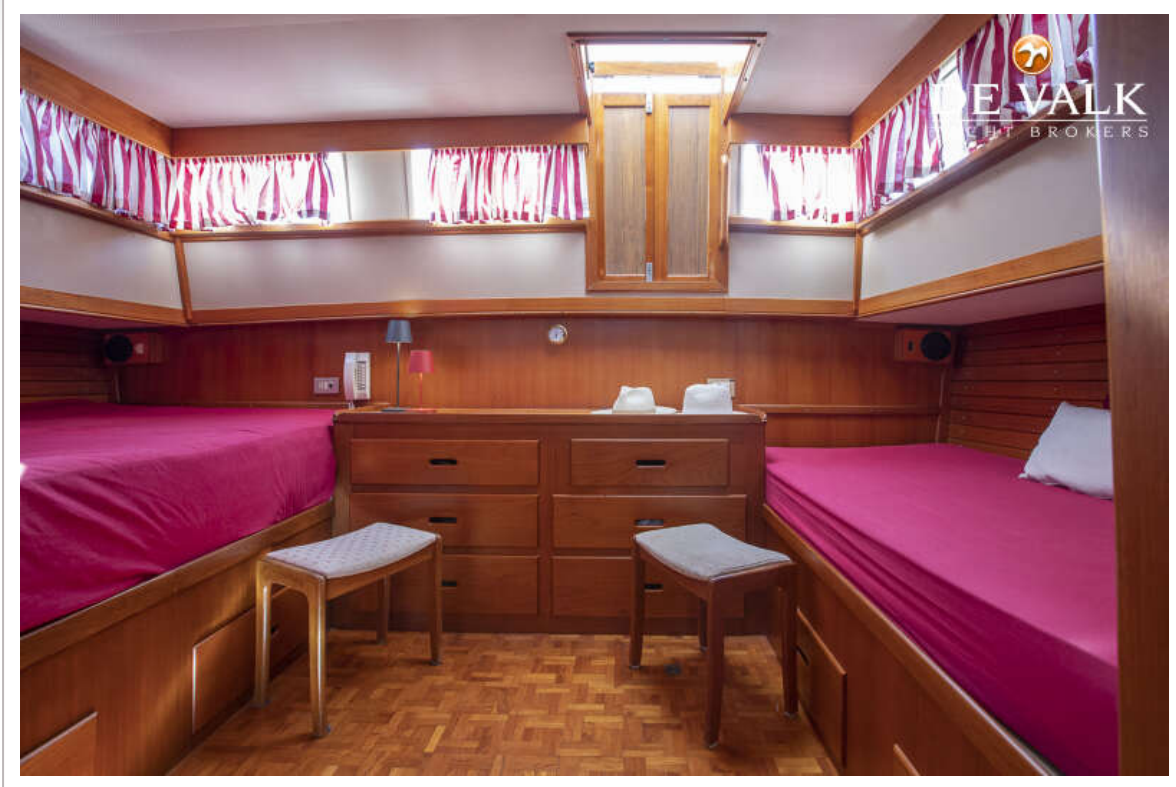
GRAND BANKS 46 CLASSIC



GRAND BANKS 46 CLASSIC



GRAND BANKS 46 CLASSIC



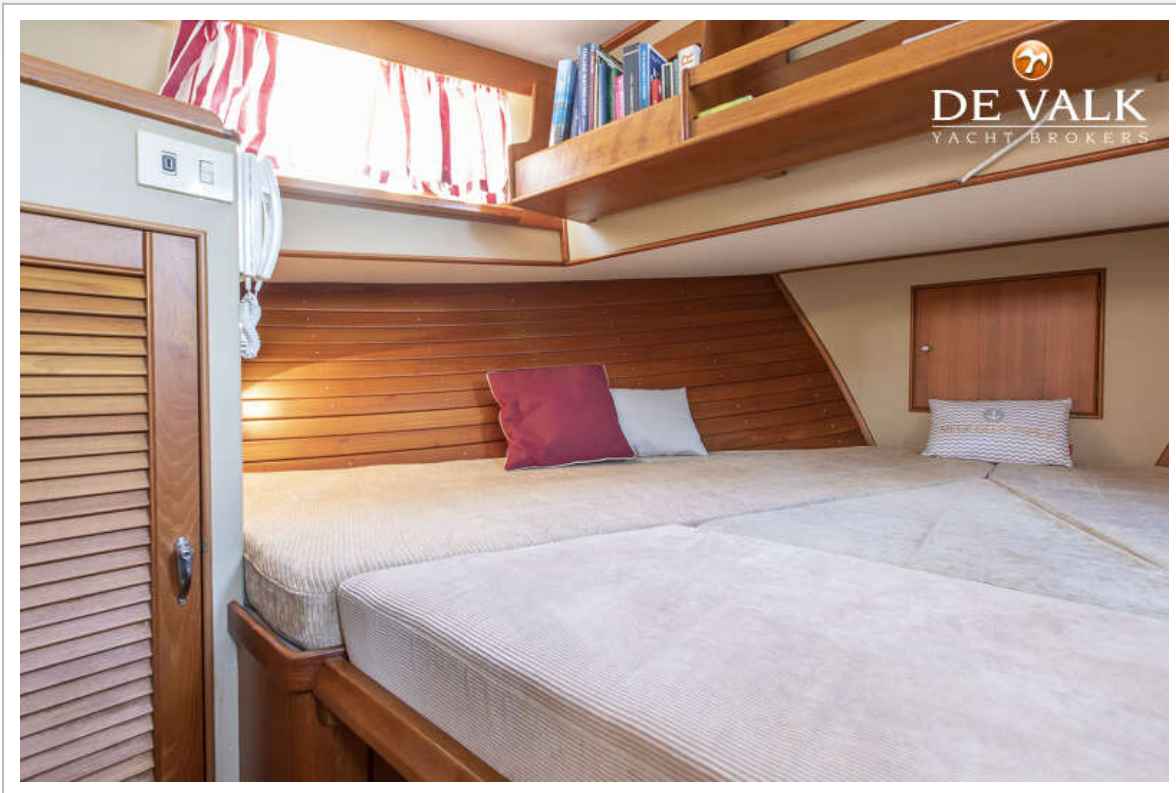
GRAND BANKS 46 CLASSIC



GRAND BANKS 46 CLASSIC



GRAND BANKS 46 CLASSIC



GRAND BANKS 46 CLASSIC

