



DE VALK
YACHT BROKERS



NAJAD 330



DE VALK
YACHT BROKERS

BROKER'S COMMENTS

Deze Najad 330 biedt een uitstekende kans om eigenaar te worden van een van de meest gewaardeerde Scandinavische kwaliteitsjachten. Het schip verkeert in een verzorgde staat en heeft de afgelopen jaren veel aandacht en investeringen ontvangen. De huidige eigenaar, sinds 2021 de tweede eigenaar van het schip, heeft haar met grote zorg onderhouden. Dankzij de praktische indeling met twee hutten is de Najad 330 ideaal voor langere reizen of comfortabel verblijf aan boord. Een vaarklaar jacht, gereed voor een nieuw avontuur.

Joris van de Rijt

SPECIFICATIONS

Dimensions	10.00 x 3.40 x 1.60 (m)	Builder	Najad Varvet AB
Built	1994	Cabins	2
Material	GRP	Berths	6
Engine(s)	1 x Volvo Penta MD 40 diesel	Hp/Kw	38.00 (hp), 27.97 (kw)
Asking price	€ 79.000 (VAT Paid)	Lying	at sales office

CONTACT

Sales office	De Valk Sint Annaland B.V.	Telephone	+31 166 601 000
Address	Koelhuisweg 4 4697 RM Sint Annaland NL	E-mail	sintannaland@devalk.nl

DISCLAIMER

These particulars are given in good faith as supplied but cannot be guaranteed.



GENERAL

Model	NAJAD 330
Type	sailing yacht
LOA (m)	10,00
LWL (m)	8,40
Beam (m)	3,40
Draft (m)	1,60
Air draft (m)	14,60
Year built	1994
Builder	Najad Varvet AB
Country	Sweden
Designer	Erik Segerlind
Displacement (t)	6
Ballast (tonnes)	2,2
Hull material	GRP
Hull colour	white Blue striping wrap new 2022
Hull shape	round-bilged
Keel type	fin keel
Superstructure material	GRP
Deck material	GRP
Deck finish	teak (renovated 2021)
Superstructure deck finish	non-skid moulded in
Cockpit deck finish	teak (renovated in 2021)
Dorades	2 x
Window frame	aluminium
Window material	perspex
Deckhatch	2 x
Radar arch	non collapsible With cardanic radar mount
Fuel tank (litre)	150
Freshwater tank (litre)	200
Tiller	With Spinlock tiller extension, Seasure tiller lock and cover



More info on hull

Underwater hull new primer + Copper coat 2021

ACCOMMODATION

Cabins	2
Berths	6
Interior	mahogany
Floor	teak and holly + carpet
Heating	diesel ducted hot air Eberspacher (serviced 2026)
Chart table	yes
Aft Cabin	yes
Dinette	yes
Galley	yes
Countertop	plastic
Sink	stainless steel
Cooker	3 burner
Oven	yes
Fridge	Toploader (new compressor 2016)
Hot water system	220V + engine
Water pressure system	electrical
Owners cabin	v-bed (mattress with slatted base)
Wardrobe	hanging and shelves
Bathroom	shared
Toilet	shared
Toilet system	manual Jabsco (2022)
Wash basin	in the bathroom
Guest cabin 1	double bed
Wardrobe	hanging and shelves
Extra info	All upholstery saloon + cabins new 2012. new curtains 2022
Extra info	All interior lighting renewed (2023)

MACHINERY



NAJAD 330

No of engines	1
Make	Volvo Penta
Type	MD 40
HP	38
kW	27.97
Fuel	diesel
Year installed	2010
Engine hours	1808
Engine cooling system	freshwater heat exchanger
Drive	sail-drive
Saildrive seal	2017
Engine controls	bowden cable
Bowthruster	water jet Hydra Jet with wireless remote (2011)
Propeller type	folding Volvo Penta (2023)
Propeller blades	3
Manual bilge pump	yes
Electric bilge pump	yes
Electrical installation	12/230V
Start battery	1 x (2023)
Service battery	2 x Victron (2024)
Bowthruster battery	2 x (2021)
Battery charger	Victron (service+start) Cetrek (bowthruster battery's)
Inverter	Victron
Shorepower	with cable
Extra info	Engine panel connected to B&G plotter

NAVIGATION

Compass	yes
Depth sounder	B&G (2022)
Log	B&G (2022)
Windset	B&G (2022)



VHF	B&G V60-B + H60 handheld in cockpit (2022)
Autopilot	Autohelm 2000 (not holding course; new unit included)
Radar	B&G HALO 20+ (2022)
GPS	Philips
Plotter	B&G Vulcan 9 (2022)
Navtex	NASA
AIS transponder	B&G
Navigation lights	LED

EQUIPMENT

Fixed windscreen	yes
Sprayhood	(2020)
Cockpit cover	(2020)
Cockpit table	yes
Boarding ladder	stainless steel
Anchor	Rocna
Anchor chain	40M
Windlass	manual Simpson Lawrence
Sea railing	wire
Grab rail (superstructure)	teak
Railing side opening gates	2 x
Pushpit	yes
Pulpit	yes
Radar reflector	Trilens
Fenders	yes
Mooring lines	yes
Radio-cd player	Sony
Speakers in salon	(2023)
Clock - barometer	yes

RIGGING



Rigging	sloop
Standing rigging	wire (age unknown) with Hasselfors Turnbuckle covers
Brand mast	Seldén
Material mast	aluminium
Spreaders	2 sets
Mainsail cover	(2022) with lazyjacks
Battcars	yes
Fully battened mainsail	Lion Sails (2014) new Selden sheet blocks (2026)
Jib	yes
Genoa	Lion Sails (2014)
Genoa furler	Selden
Genoa cover	(2022)
Reefing System	slabreefing
Backstay adjuster	mechanical Hasselfors
Boomvang	gasspring Selden (new gasspring 2022)
Genoa sheetwinches	2 x Lewmar ST
Spinnaker winch	2 x Lewmar ST
Multifunctional winches	4 x Lewmar on mast
Spi-pole	aluminium Selden
Extra info	Running rigging and sheets replaced 2022-2023



NAJAD 330



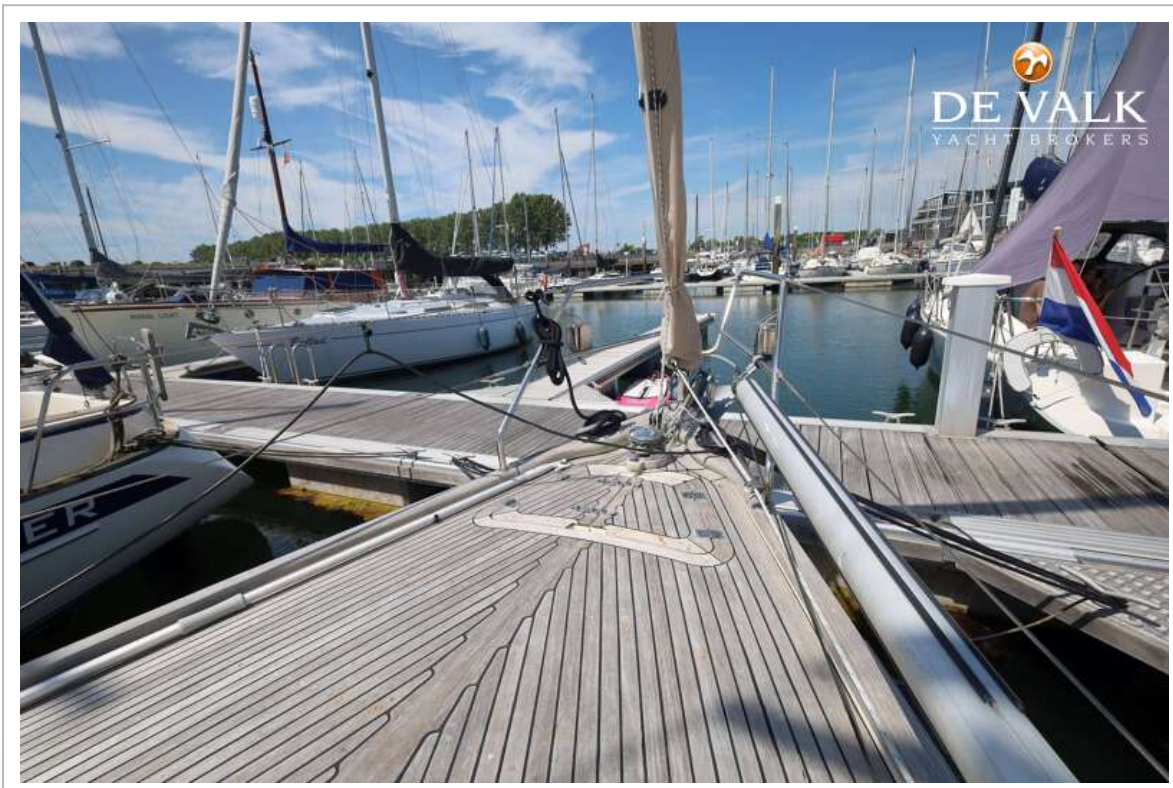
NAJAD 330



NAJAD 330



NAJAD 330



NAJAD 330



NAJAD 330



NAJAD 330



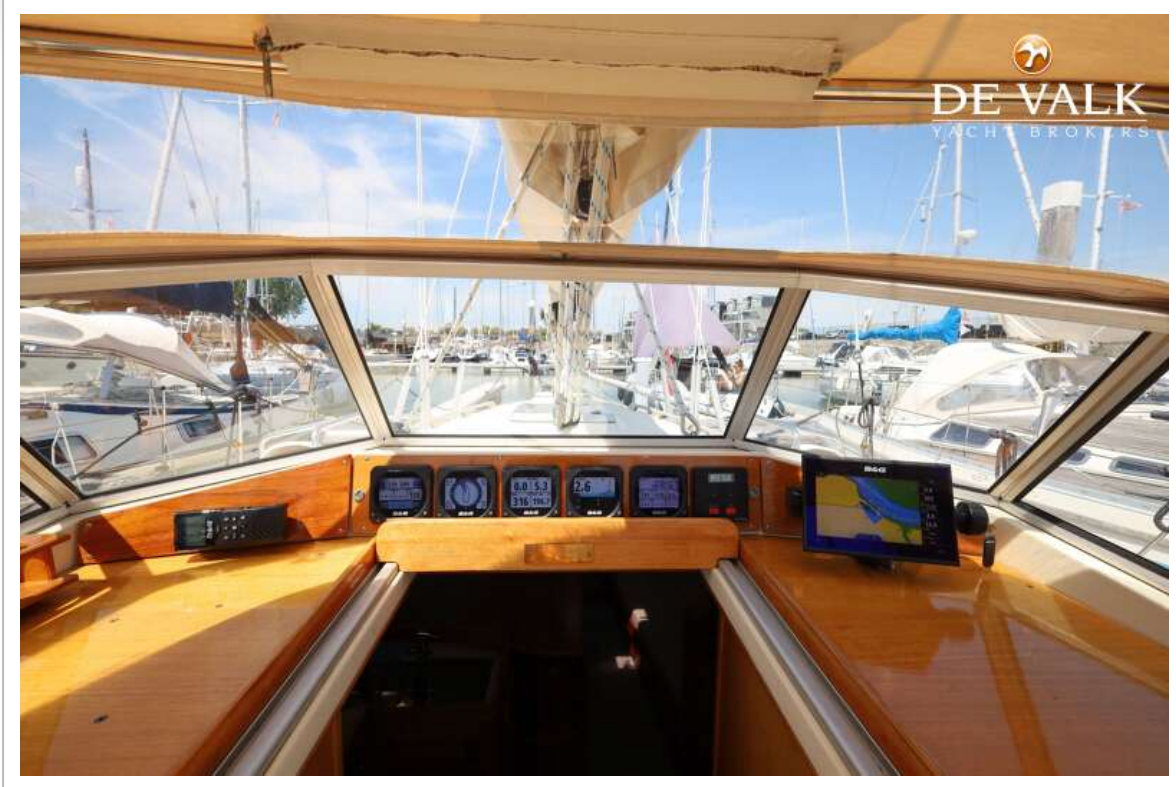
NAJAD 330



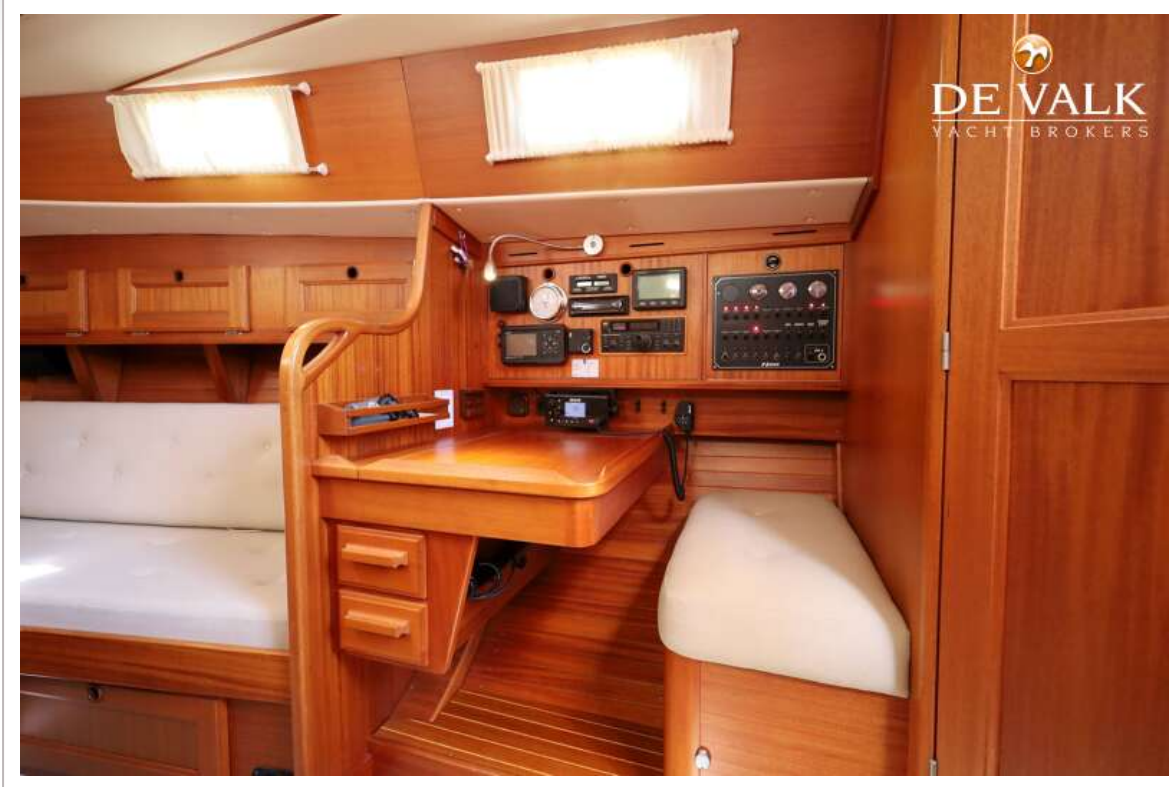
NAJAD 330



NAJAD 330



NAJAD 330



NAJAD 330



NAJAD 330



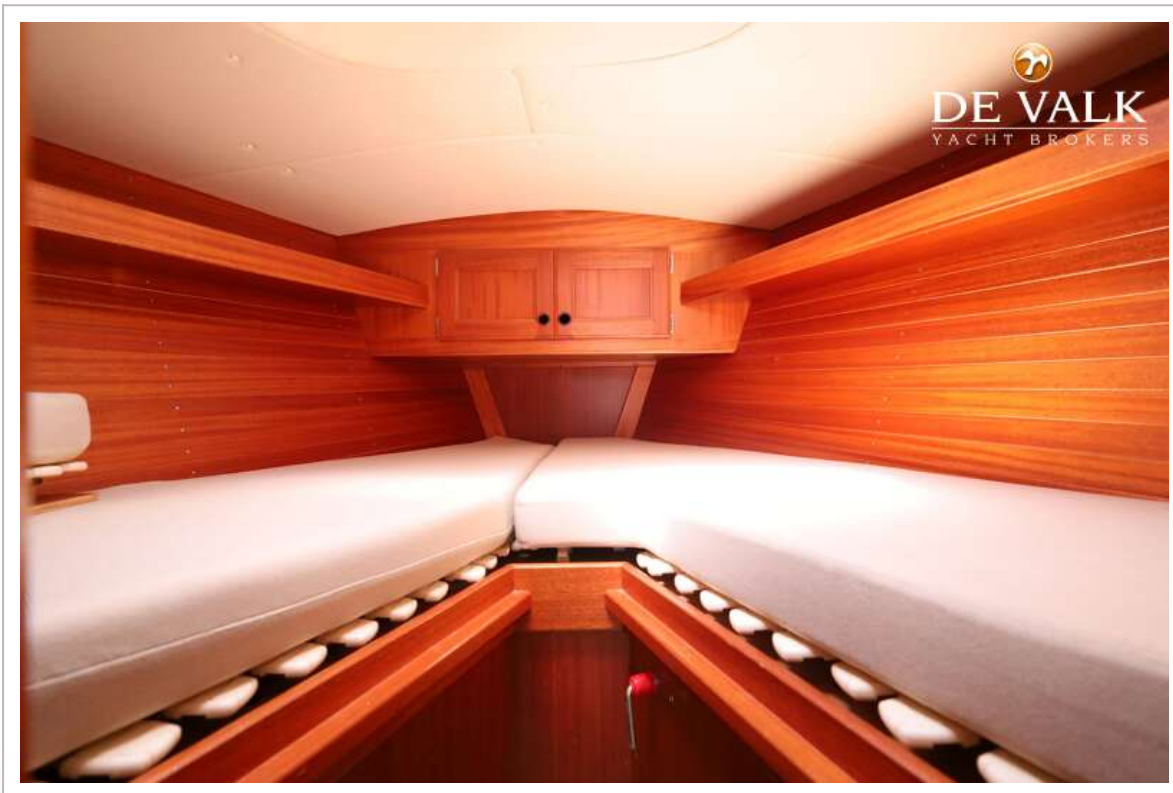
NAJAD 330



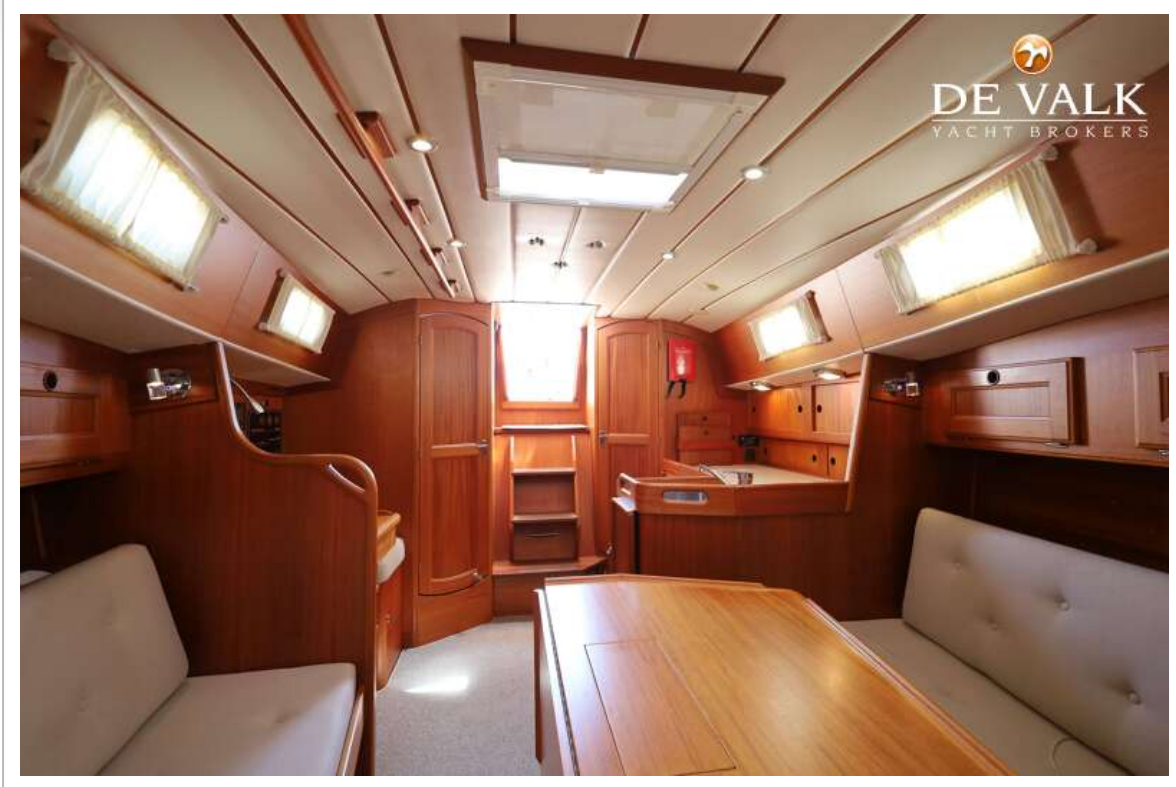
NAJAD 330



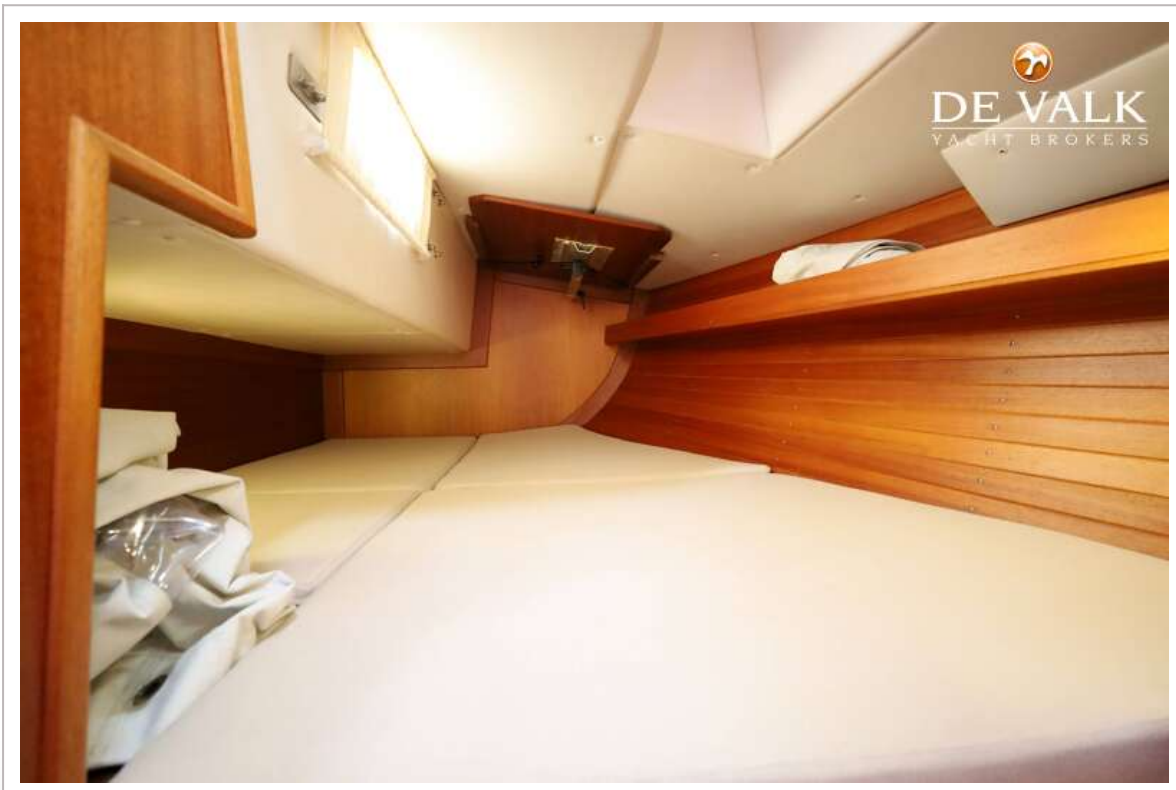
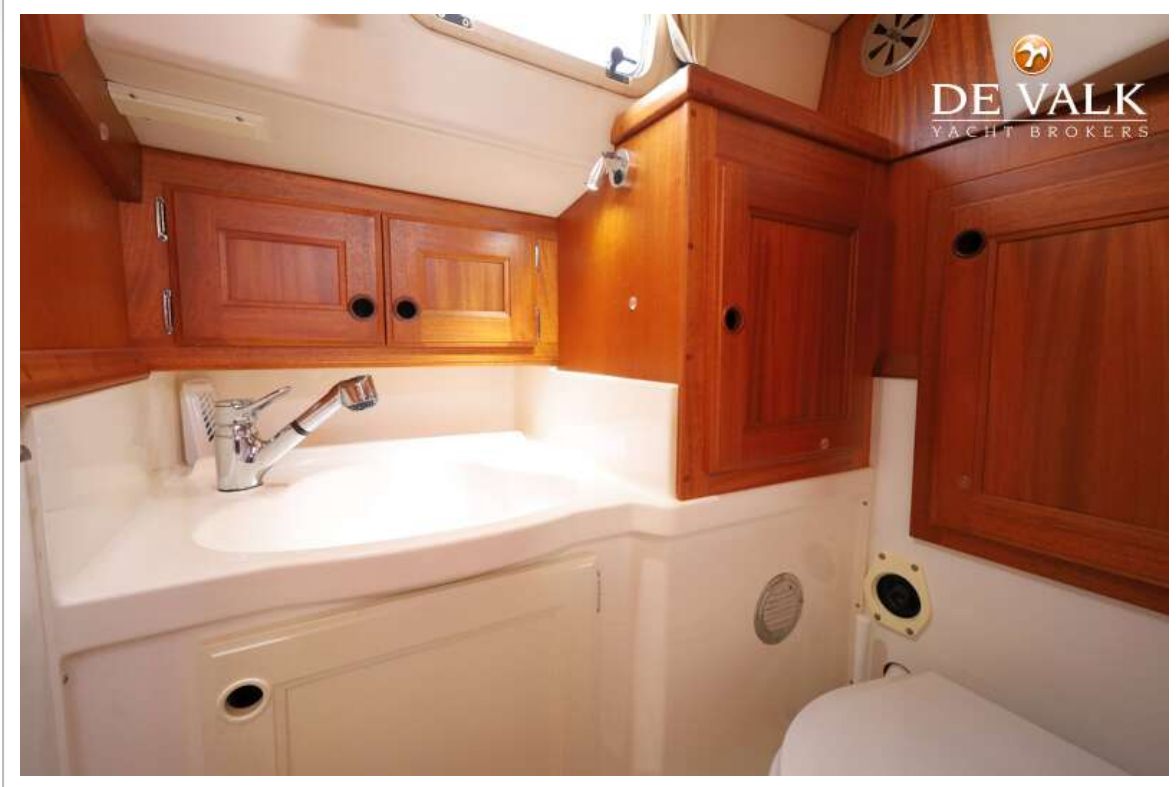
NAJAD 330



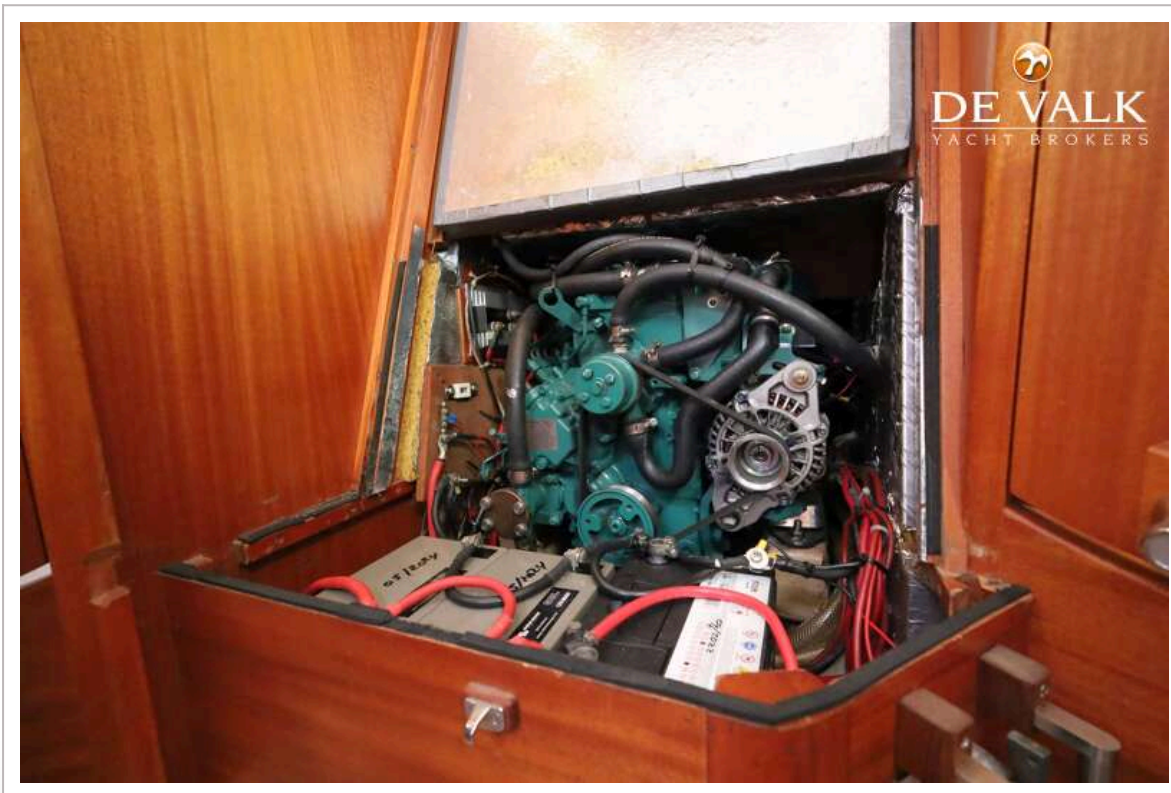
NAJAD 330



NAJAD 330



NAJAD 330



FREQUENTLY ASKED QUESTIONS



DE VALK
BROKERS

What is the reason for selling your yacht?

We have purchased a larger Najad and therefore decided to sell this yacht.

How many owners has your yacht had and when?

We are the second owners since 2021. The yacht was originally purchased from Najad Benelux in Scharendijke in 1993 and delivered in spring 1994.

What can you tell about the history and cruising area of your yacht?

The yacht has always been based in Zeeland and stored in a heated shed during winter. It has been lightly used and sailed mainly in the Zeeland waters.

Why did you choose this yacht when you bought it?

Having owned several Swedish yachts, we consider this one of the best in terms of quality. We were particularly impressed by the spacious interior, practical layout, and excellent cockpit ergonomics.

What is the special meaning of the name of the yacht for you?

"Elysium" means "paradise," which perfectly reflects the feeling of being on board.

Has your yacht ever been used for charter? And if so, when?

No.

What can you tell about the sailing characteristics of your yacht?

The yacht sails exceptionally well, especially in winds above Force 4. The Lian sails are easy to handle and of excellent quality. The yacht feels safe and solid in rough conditions. A Hydro bow thruster with remote control makes manoeuvring easy.

What did you do with your yacht during the winter?

Always indoors in a heated shed at Mariteam, St. Annaland.

What kind of maintenance or renewals have been carried out (with documentation as prove)?

The yacht has received extensive annual maintenance and upgrades. Documentation is available; please refer to the specification list.

What are, according to you, future points of attention with regard to the maintenance of your yacht?

Saildrive gaiter replacement in the coming years.

Autohelm calibration or possible replacement.

Gas installation inspection and certification.

Minor electrical checks.

Annual teak deck maintenance.

Which four keywords would you use to describe your yacht?

top-quality construction

Excellent condition

Great sailing characteristics

Practical and spacious interior

