



DE VALK
YACHT BROKERS



FAIRLINE 43



DE VALK
YACHT BROKERS

FAIRLINE 43

BROKER'S COMMENTS

This 1989 Fairline 43 is well regarded for solid build quality, comfortable cruising, and good sea handling. This Fairline 43 is a classic British flybridge cruiser with spacious accommodation and reliable shaft-drive Volvo engines. She is perfect for a longer stay at board.

Raoul van der Werf

SPECIFICATIONS

Dimensions	13.00 x 4.00 x 1.00 (m)	Builder	Fairline
Built	1989	Cabins	3
Material	GRP	Berths	
Engine(s)	2 x VOLVO PENTA TAMD 71A diesel	Hp/Kw	2 x 356.00 (hp), 262.02 (kw)
Asking price	€ 110.000 (VAT Paid)	Lying	contact Antibes

CONTACT

Sales office	De Valk Antibes	Telephone	+33 492 91 0202
Address	2, Avenue de Verdun 06600 Antibes FR	E-mail	antibes@devalk.nl

DISCLAIMER

These particulars are given in good faith as supplied but cannot be guaranteed.



FAIRLINE 43

GENERAL

Model	FAIRLINE 43
Type	motor yacht
LOA (m)	13,00
Beam (m)	4,00
Draft (m)	1,00
Year built	1989
Builder	Fairline
Designer	Bernard Olienski
Displacement (t)	15
Hull material	GRP
Hull colour	white
Hull shape	deep-V
Deck material	GRP
Antifouling (year)	yes
Flybridge	yes
Radar arch	yes
Fuel tank (litre)	1598
Level indicator (fuel tank)	yes
Freshwater tank (litre)	537
Level indicator (freshwater)	yes
Blackwater tank (litre)	90
Level indicator (blackwater)	yes

ACCOMMODATION

Cabins	3
Interior	cherry
Floor	parquet
Saloon	yes
Air-conditioning	Frigomar 2022 - need service
Navigation center	yes



FAIRLINE 43

Dining room	yes
Sliding door to aft deck	yes
Galley	yes
Countertop	yes
Sink	corian
Cooker	induction 4 burners
Oven	Bosch
Microwave	Sharp
Fridge	Waeco
Hot water system	yes
Water pressure system	yes
Crockery	yes
Owners cabin	double bed
Bed length (m)	2
Wardrobe	drawers and shelves
Bathroom	en suite
Toilet	yes
Toilet system	electric
Wash basin	yes
Shower	yes
Guest cabin 1	single bed 2
Bed length (m)	2
Wardrobe	drawers and shelves
Bathroom	shared
Toilet	yes
Toilet system	electric
Wash basin	yes
Shower	yes
Guest cabin 2	bunk bed
Bed length (m)	2
Wardrobe	drawers and shelves
Bathroom	shared



MACHINERY

No of engines	2
Make	VOLVO PENTA
Type	TAMD 71A
HP	356
kW	262.02
Fuel	diesel
Maximum speed (kn)	27
Cruising speed (kn)	22
Bowthruster	yes
Manual bilge pump	yes
Electric bilge pump	yes
Bilge alarm	yes
Generator	FischerPanda 10,000i
Start battery	yes
Service battery	yes
Electric engine battery	yes
Generator battery	yes
Bowthruster battery	yes
Battery charger	yes
Shorepower	with cable

NAVIGATION

Compass	yes
Depth sounder	yes
VHF	yes
Radar/GPS/plotter	Raymarine
Navigation lights	yes
Searchlight	yes



EQUIPMENT

Bimini	yes
Cockpit cushions	yes
Bathing platform	yes
Boarding ladder	yes
Gangway	yes
Anchor	yes
Anchor chain	yes
Horn	yes
Fenders	yes
Mooring lines	yes
TV	In saloon
Radio	yes
Cockpit speakers	yes



FAIRLINE 43



FAIRLINE 43



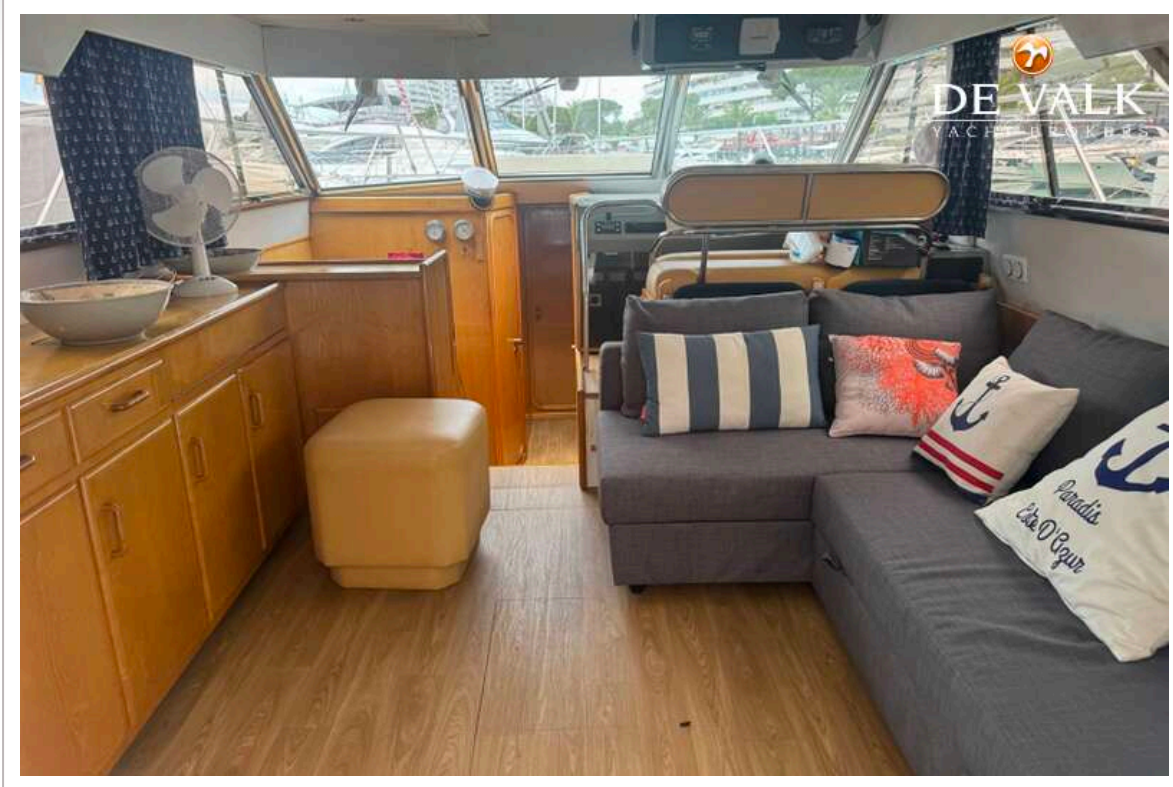
FAIRLINE 43



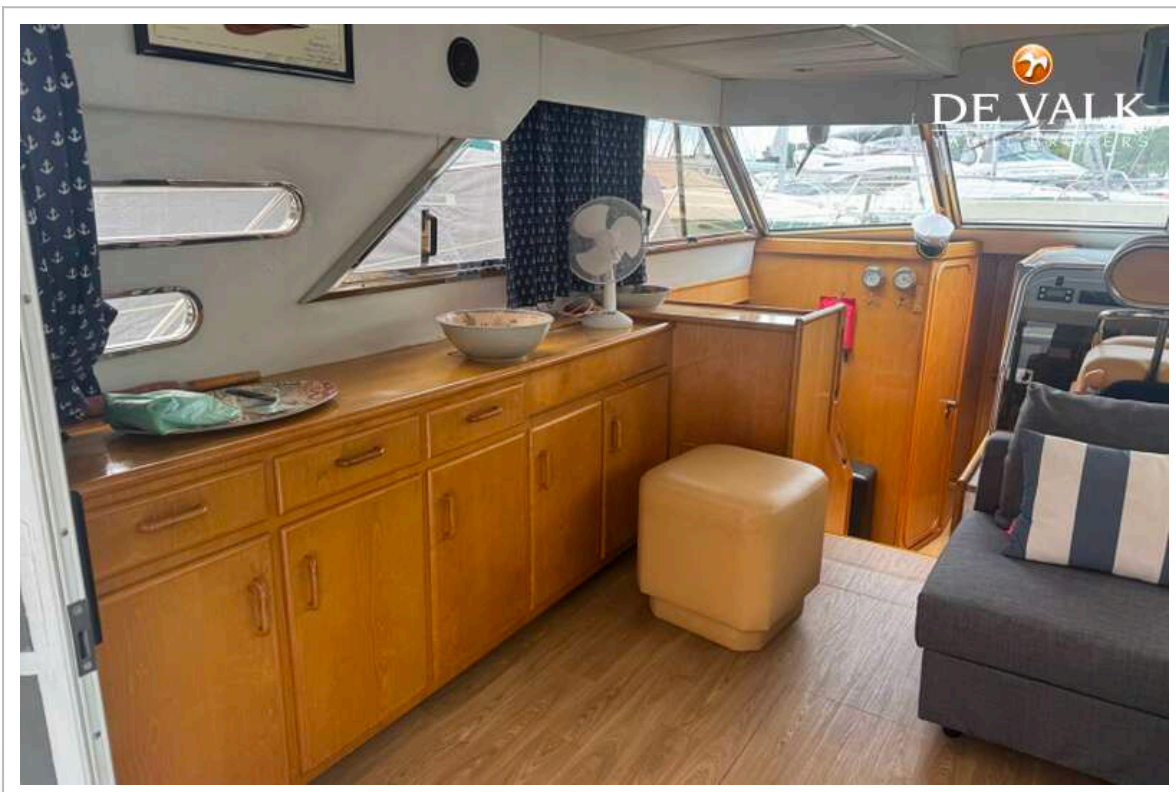
FAIRLINE 43



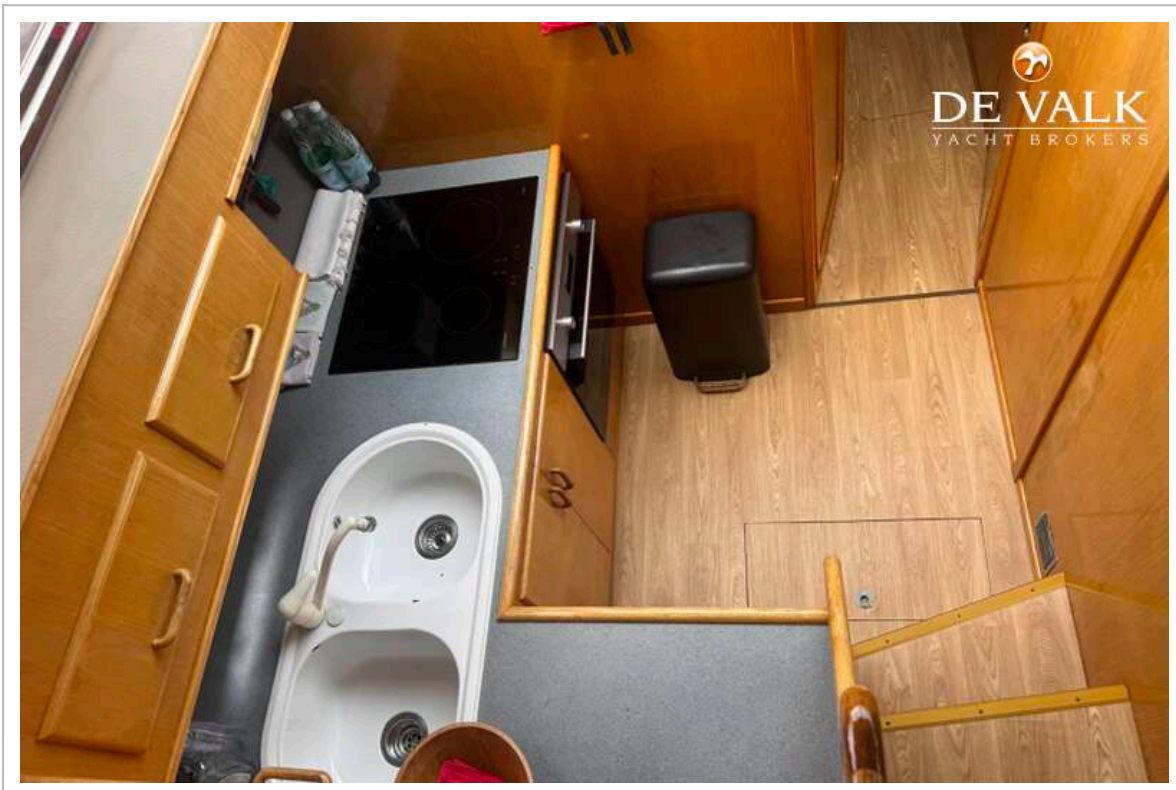
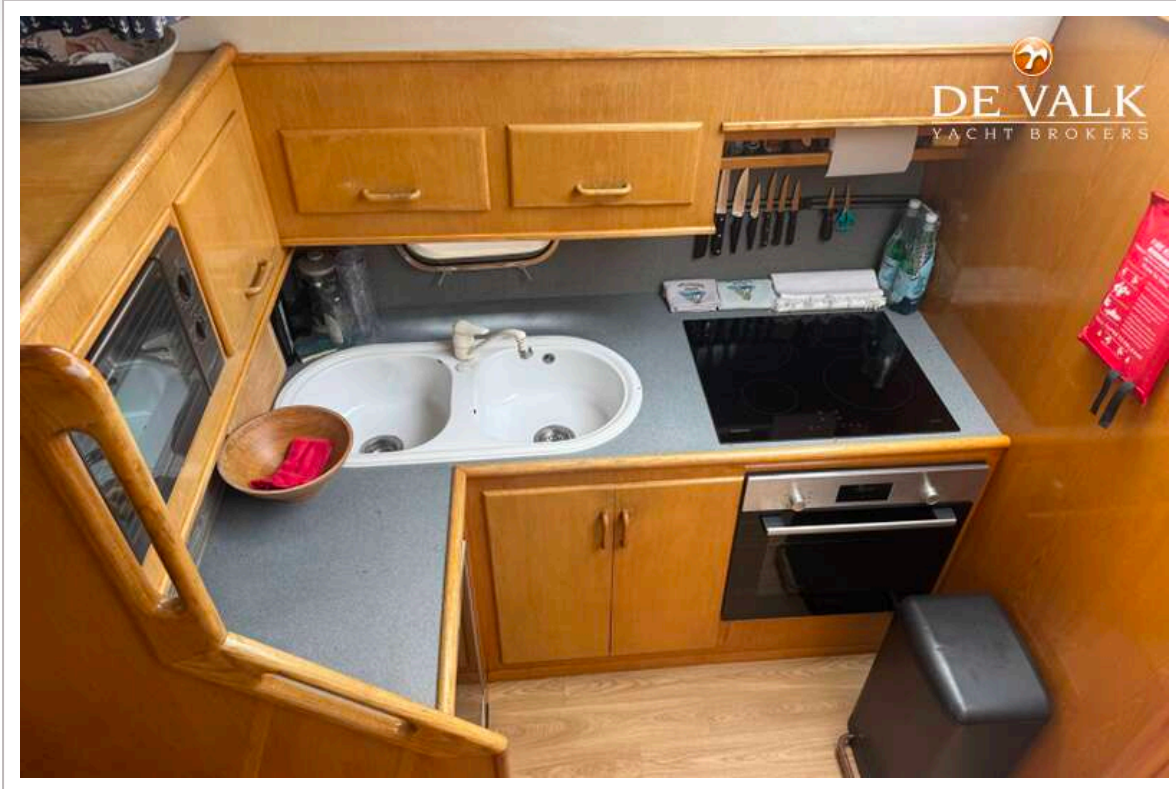
FAIRLINE 43



FAIRLINE 43



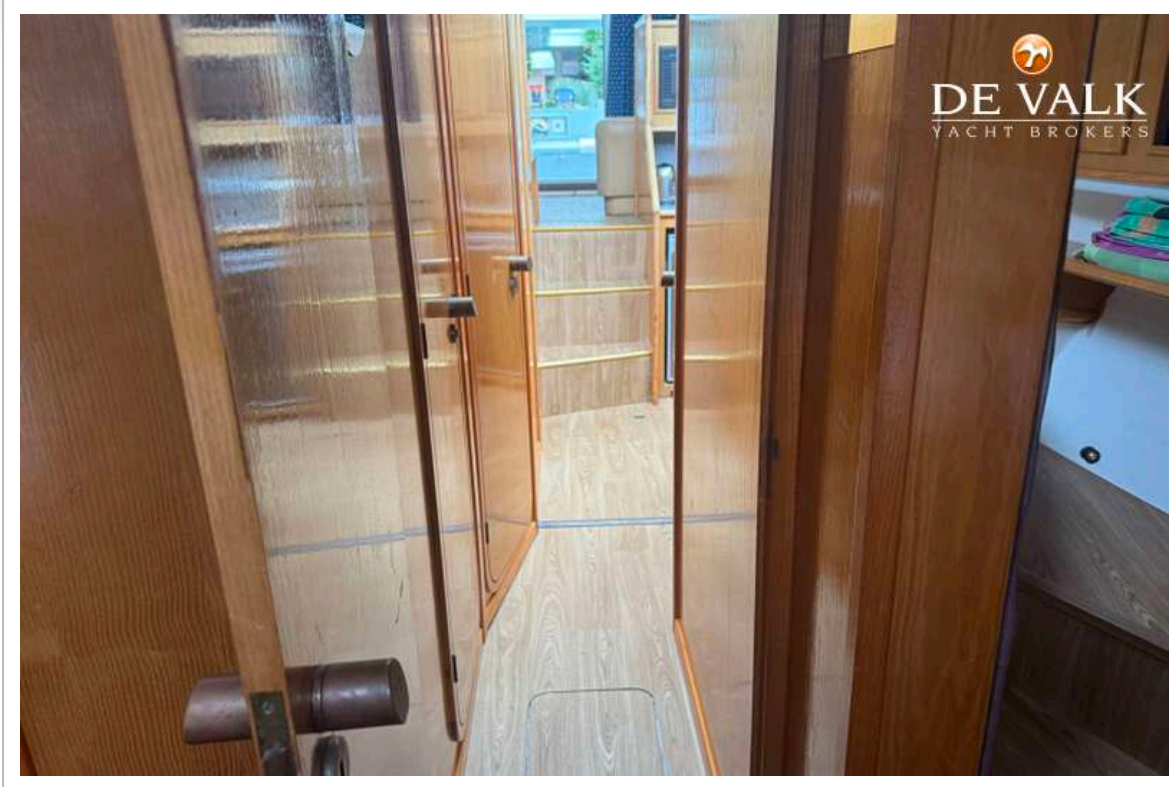
FAIRLINE 43



FAIRLINE 43



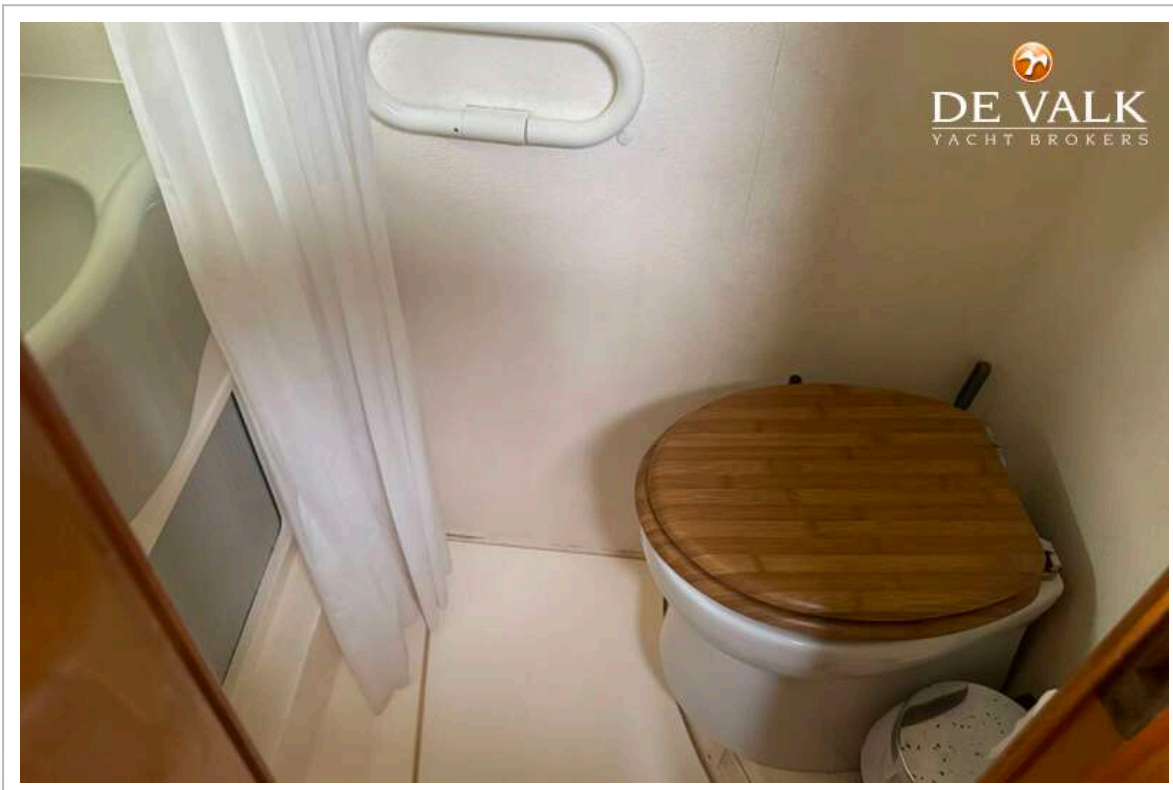
FAIRLINE 43



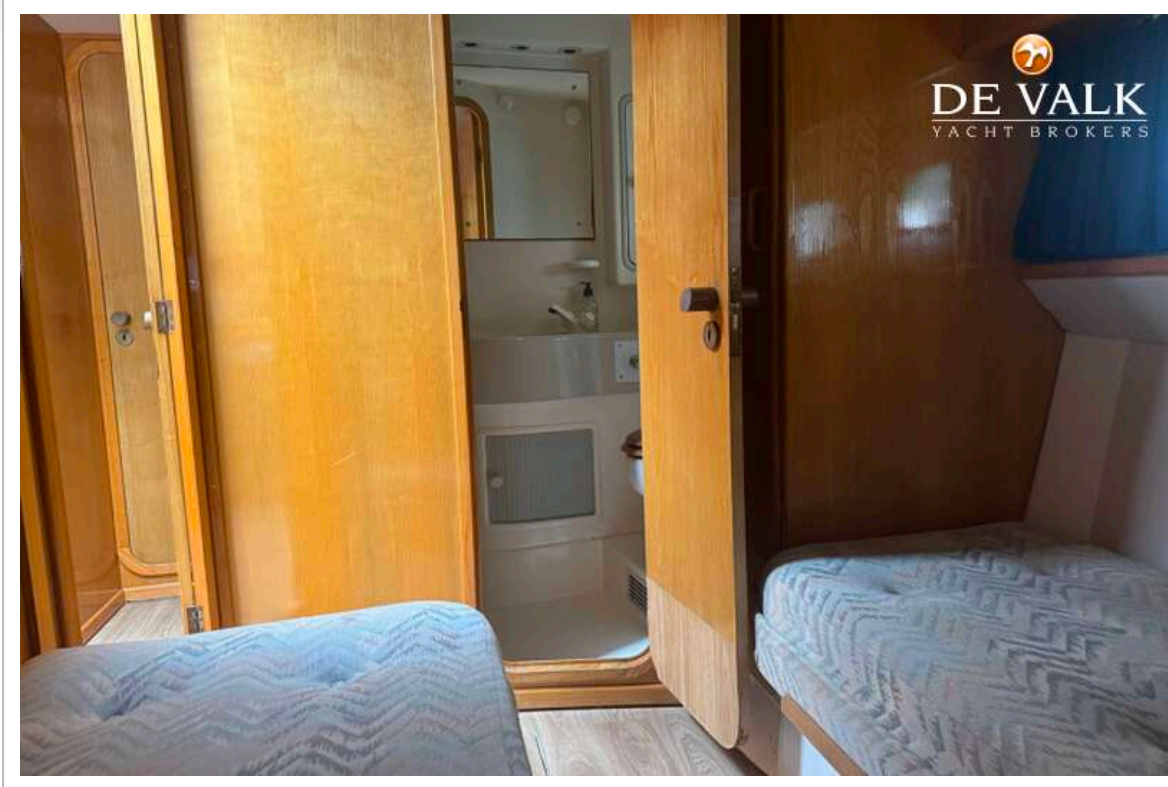
FAIRLINE 43



FAIRLINE 43



FAIRLINE 43



FAIRLINE 43

