



DE VALK  
YACHT BROKERS



## AQUAMARINE ALDABRA 600



DE VALK  
YACHT BROKERS

# AQUAMARINE ALDABRA 600

## BROKER'S COMMENTS

This AQUAMARINE ALDABRA 600 is a specially designed sailing catamaran, fully custom. Only 2 in the world! Besides being an exceptional catamaran, she is also incredibly well built, allowing a great navigation experience and a sense of security at all times. This AQUAMARINE ALDABRA 600 has a large relaxing free space, for family and friends. She can welcome people in her 4 cabins, all independent with their own bathroom, without forgetting the crew cabins. Fully equipped in electronics and autonomous with watermaker, generator and dinghy. You won't neither miss or need to touch grass anymore!

*Yume Pellegrino*

## SPECIFICATIONS

|                     |                                    |                |                              |
|---------------------|------------------------------------|----------------|------------------------------|
| <b>Dimensions</b>   | 18.20 x 9.20 x 1.60 (m)            | <b>Builder</b> | CANTIERE AQUAMARINE          |
| <b>Built</b>        | 2005                               | <b>Cabins</b>  | 4                            |
| <b>Material</b>     | GRP                                | <b>Berths</b>  | 8                            |
| <b>Engine(s)</b>    | 2 x VOLKSWAGEN VW TDI 120-5 diesel | <b>Hp/Kw</b>   | 2 x 240.00 (hp), 176.64 (kw) |
| <b>Asking price</b> | € 880.000 (VAT Paid)               | <b>Lying</b>   | contact Antibes              |

## CONTACT

|                     |  |                  |                   |
|---------------------|--|------------------|-------------------|
| <b>Sales office</b> | De Valk Antibes                            | <b>Telephone</b> | +33 492 91 0202   |
| <b>Address</b>      | 2, Avenue de Verdun<br>06600 Antibes<br>FR | <b>E-mail</b>    | antibes@devalk.nl |

## DISCLAIMER

These particulars are given in good faith as supplied but cannot be guaranteed.



# AQUAMARINE ALDABRA 600

## GENERAL

|                                |  |
|--------------------------------|--|
| <b>Model</b>                   | AQUAMARINE ALDABRA 600                     |
| <b>Type</b>                    | catamaran sailing yacht                    |
| <b>LOA (m)</b>                 | 18,20                                      |
| <b>Beam (m)</b>                | 9,20                                       |
| <b>Draft (m)</b>               | 1,60                                       |
| <b>Year built</b>              | 2005                                       |
| <b>Builder</b>                 | CANTIERE AQUAMARINE                        |
| <b>Country</b>                 | Italy                                      |
| <b>Designer</b>                | BERRET ET RACOUPEAU                        |
| <b>Displacement (t)</b>        | 10   |
| <b>CE norm</b>                 | A  |
| <b>Hull material</b>           | GRP  |
| <b>Cockpit deck finish</b>     | synthetic teak                             |
| <b>Antifouling (year)</b>      | 2025                                       |
| <b>Insulation</b>              | Roof - deck - hulls                        |
| <b>Fuel tank (litre)</b>       | 650  |
| <b>Fuel tank 2 (litre)</b>     | 650  |
| <b>Freshwater tank (litre)</b> | X2 – 1200L (tot)                           |
| <b>Blackwater tank (litre)</b> | X2 – 100L (tot)                            |
| <b>Wheel steering</b>          | X2 positions with 2 carbon wheels + covers |
| <b>Extra info</b>              | Refit in 2022                              |

## ACCOMMODATION

|                          |  |
|--------------------------|--|
| <b>Cabins</b>            | 4  |
| <b>Berths</b>            | 8  |
| <b>Air-conditioning</b>  | 15000 BTU in salon & 10000 BTU per cabin (runs on genset & batt) |
| <b>Navigation center</b> | GARMIN   |
| <b>Chart table</b>       | yes  |
| <b>Galley</b>            | yes  |



# AQUAMARINE ALDABRA 600

|                       |                         |
|-----------------------|-------------------------|
| Countertop            | corian Black            |
| Sink                  | yes                     |
| Gas alarm             | yes                     |
| Microwave/oven combi  | yes                     |
| Fridge                | In cockpit              |
| Freezer               | yes                     |
| Hot water system      | X2 – 45L                |
| Water pressure system | X2                      |
| Ice maker             | In cockpit              |
| Coffee maker          | Nespresso               |
| Owners cabin          | double bed              |
| Bed length (m)        | 2                       |
| Wardrobe              | hanging/drawers/shelves |
| Bathroom              | en suite                |
| Toilet                | en suite                |
| Toilet system         | electric                |
| Wash basin            | in the bathroom         |
| Shower                | en suite                |
| Guest cabin 1         | double bed              |
| Bed length (m)        | 2                       |
| Wardrobe              | hanging/drawers/shelves |
| Bathroom              | en suite                |
| Toilet                | en suite                |
| Toilet system         | electric                |
| Wash basin            | in the bathroom         |
| Shower                | en suite                |
| Guest cabin 2         | double bed              |
| Bed length (m)        | 2                       |
| Wardrobe              | hanging/drawers/shelves |
| Bathroom              | en suite                |
| Toilet                | en suite                |
| Toilet system         | electric                |



# AQUAMARINE ALDABRA 600

|                 |                         |
|-----------------|-------------------------|
| Wash basin      | in the bathroom         |
| Shower          | en suite                |
| Guest cabin 3   | v-bed                   |
| Bed length (m)  | 2                       |
| Wardrobe        | hanging/drawers/shelves |
| Bathroom        | En suite                |
| Toilet          | en suite                |
| Toilet system   | electric                |
| Wash basin      | in the bathroom         |
| Shower          | en suite                |
| Guest cabin 4   | v-bed                   |
| Bed length (m)  | 2                       |
| Wardrobe        | hanging/drawers/shelves |
| Bathroom        | En suite                |
| Toilet          | en suite                |
| Toilet system   | electric                |
| Wash basin      | in the bathroom         |
| Shower          | en suite                |
| Crew cabin(s)   | Double bed              |
| Bathroom (crew) | yes                     |
| Toilet (crew)   | yes                     |
| Toilet system   | yes                     |
| Wash basin      | yes                     |
| Shower (crew)   | yes                     |
| Washing machine | 5kg                     |

## MACHINERY

|               |              |
|---------------|--------------|
| No of engines | 2            |
| Make          | VOLKSWAGEN   |
| Type          | VW TDI 120-5 |
| HP            | 240          |



# AQUAMARINE ALDABRA 600

|                                 |  |
|---------------------------------|--|
| <b>kW</b>                       | 176.64   |
| <b>Fuel</b>                     | diesel   |
| <b>Cruising speed (kn)</b>      | 10   |
| <b>Engine cooling system</b>    | seawater X2  |
| <b>Propeller type</b>           | 2 folding + 3 blade propellers MaxProp - 2 fixed& 4 blades spare |
| <b>Manual bilge pump</b>        | X2   |
| <b>Electric bilge pump</b>      | X6   |
| <b>Bilge alarm</b>              | yes  |
| <b>Electrical installation</b>  | 220V / 50Hz – 24V DC   |
| <b>Generator</b>                | KOHLER – 17,5 KVA  |
| <b>Running hours generator</b>  | 1721   |
| <b>Service battery</b>          | Lithium 20kw – VICTRON   |
| <b>Generator battery</b>        | yes  |
| <b>Inverter</b>                 | 2500W  |
| <b>Battery charger/inverter</b> | 8kw – VICTRON  |
| <b>Shorepower</b>               | with cable 32A - 220V / 50Hz – 230V                              |
| <b>Watermaker</b>               | IDROMAR 220L/h   |

## NAVIGATION

|                          |   |
|--------------------------|---|
| <b>Compass</b>           | RITCHIE   |
| <b>Depth sounder/log</b> | yes   |
| <b>VHF</b>               | yes   |
| <b>Autopilot</b>         | GARMIN (starboard) + remote control                             |
| <b>Radar/GPS</b>         | GARMIN  |
| <b>AIS transceiver</b>   | yes   |
| <b>Navigation lights</b> | On pulpits and davits + deck and steam lights + courtesy lights |

## EQUIPMENT

|                         |                                   |
|-------------------------|-----------------------------------|
| <b>Fixed hardtop</b>    | In composite with courtesy lights |
| <b>Cockpit cushions</b> | Grey                              |
| <b>Boarding ladder</b>  | X2                                |



# AQUAMARINE ALDABRA 600

|                                   |   |
|-----------------------------------|---|
| <b>Gangway</b>                    | & deck covered with synthetic teak        |
| <b>Deck shower</b>                | yes                                       |
| <b>Anchor</b>                     | Delta 50kg                                |
| <b>Anchor chain</b>               | 100m x 12mm                               |
| <b>Anchor 2</b>                   | Delta 20kg                                |
| <b>Anchor chain</b>               | 50m x 10mm                                |
| <b>Windlass</b>                   | LOFRANS – 24W Titan B 2000W               |
| <b>Dinghy</b>                     | Tender ARUBA 3.30m                        |
| <b>Outboard</b>                   | HONDA – 30hp                              |
| <b>Davits</b>                     | X2  |
| <b>Grab rail (superstructure)</b> | Two rows                                  |
| <b>Clearview window</b>           | 360° – access from cockpit to salon flush |
| <b>Fenders</b>                    | X8  |
| <b>Spare parts</b>                | yes                                       |
| <b>Alarm system</b>               | yes                                       |
| <b>TV</b>                         | In salon                                  |
| <b>TV receiver</b>                | yes                                       |
| <b>Clock - barometer</b>          | VION                                      |

## RIGGING

|                                |                                     |
|--------------------------------|-------------------------------------|
| <b>Standing rigging</b>        | yes                                 |
| <b>Brand mast</b>              | Alu Carbon                          |
| <b>Material mast</b>           | carbon + tricolour & mooring lights |
| <b>Mainsail</b>                | 147sqm – SPECTRA                    |
| <b>Genoa</b>                   | 76 sqm – SPECTRA                    |
| <b>Gennaker</b>                | 186 sqm – SPECTRA                   |
| <b>Boomvang</b>                | Carbon                              |
| <b>Multifunctional winches</b> | X4 electric 66ST HARKEN             |



# AQUAMARINE ALDABRA 600



# AQUAMARINE ALDABRA 600



# AQUAMARINE ALDABRA 600



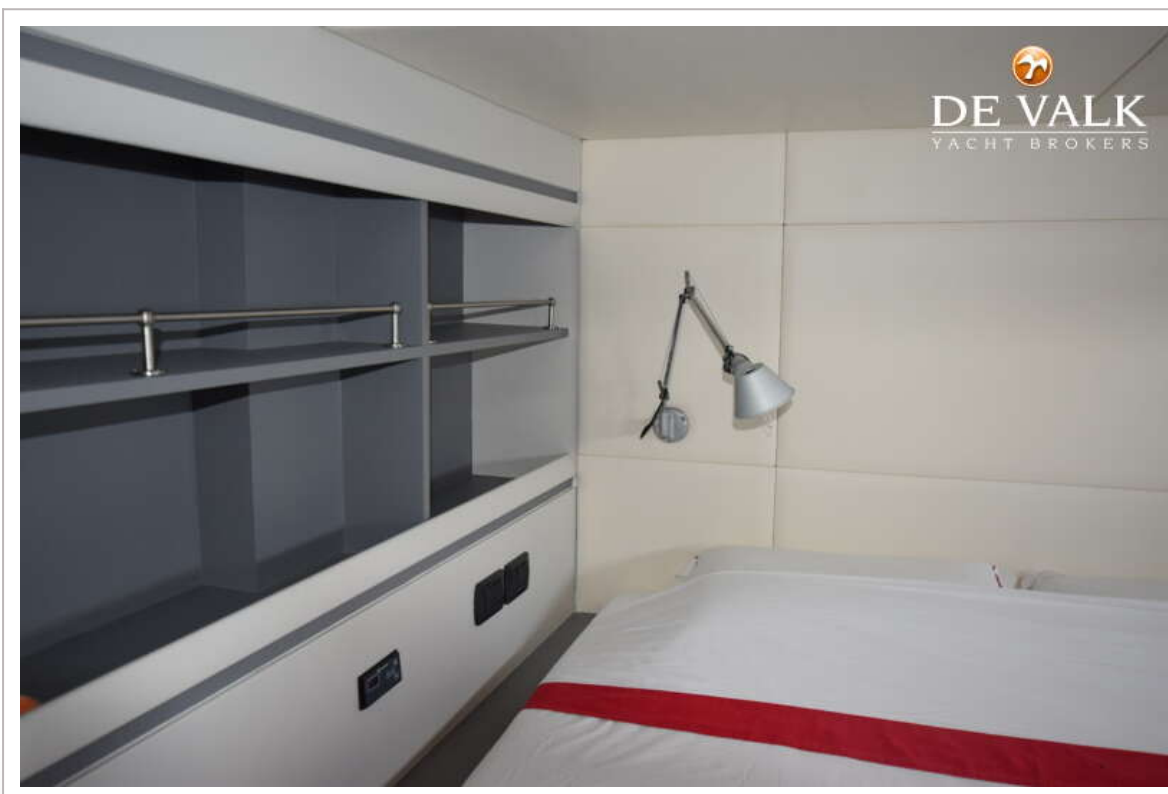
# AQUAMARINE ALDABRA 600



# AQUAMARINE ALDABRA 600



# AQUAMARINE ALDABRA 600



# AQUAMARINE ALDABRA 600

