



DE VALK
YACHT BROKERS



ALTIMA EXPRESS COUPE 65



DE VALK
YACHT BROKERS

ALTIMA EXPRESS COUPE 65

BROKER'S COMMENTS

Step into a new standard of luxury cruising with this brand-new 2025 Altima Express Coupe 20M. Powered by twin Volvo Penta D13-900 engines and equipped with joystick docking stations, gyro stabilizers and advanced Garmin navigation, she offers exceptional performance and effortless handling. Her luxurious 3-cabin layout, large electric sunroof, premium Miele appliances and powerful climate control ensure outstanding comfort on board. Ready for a new journey

Hielke Peters

SPECIFICATIONS

Dimensions	19.81 x 5.40 x 1.35 (m)	Builder	Mess Yaticilik
Built	2025	Cabins	3
Material	GRP	Berths	6
Engine(s)	2 x Volvo Penta D13-900 diesel	Hp/Kw	2 x 900.00 (hp), 662.40 (kw)
Asking price	€ 2.600.000 (VAT Not paid)	Lying	contact Loosdrecht

CONTACT

Sales office	De Valk Loosdrecht B.V.	Telephone	+31 (0)35 582 90 30
Address	't Breukeleveense Meentje 6 1231LM Loosdrecht / Wijdmeren NL	E-mail	loosdrecht@devalk.nl

DISCLAIMER

These particulars are given in good faith as supplied but cannot be guaranteed.



ALTIMA EXPRESS COUPE 65

GENERAL

Model	ALTIMA EXPRESS COUPE 65
Type	motor yacht
LOA (m)	19,81
Beam (m)	5,40
Draft (m)	1,35
Year built	2025
Builder	Mess Yacilic
Country	Turkey
Displacement (t)	38
Hull material	GRP
Hull colour	Brown sugar metallic
Hull shape	V-shaped hull
Superstructure material	GRP
Superstructure (mm)	yes
Deck material	GRP
Deck finish	synthetic teak
Superstructure deck finish	synthetic teak
Cockpit deck finish	synthetic teak
Window frame	yes
Window material	Mirror glass
Deckhatch	yes
Portholes	stainless steel
Insulation	yes
Radar arch	collapsible
Fuel tank (litre)	3598
Level indicator (fuel tank)	yes
Freshwater tank (litre)	yes
Level indicator (freshwater)	yes
Blackwater tank (litre)	yes
Level indicator (blackwater)	yes



ALTIMA EXPRESS COUPE 65

Blackwater tank extraction	yes
Greywater tank (litre)	yes
Level indicator (greywater)	yes
Wheel steering	hydraulic
Inside helm position	yes
Outside helm position	With joystick Port- and starboardside
More info on hull	Matallic paint
More info on paintwork	AWL Grip white Paint exterior

ACCOMMODATION

Cabins	3
Berths	6
Interior	oak
Layout	yes
Floor	woodprint
Open cockpit	yes
Aft deck	yes
Deck saloon	yes
Saloon	yes
Sliding roof	electric Large Sunroof with screen and shade blinds
Air-conditioning	reverse cycle airco Wabasto chiller total 2x 95,000 BTU Blue Cool
Dinette to convert into berth	Remote Electric High/Low Dinette Table with sleeper cushi
Sliding door to aft deck	yes
Galley	yes
Countertop	corian
Sink	stainless steel
Cooker	induction Miele
Extractor	yes
Microwave/oven combi	Miele
Fridge	(4) Pullout drawer Refrigerator /freezer



ALTIMA EXPRESS COUPE 65

Freezer	(4) Pullout drawer Refrigerator /freezer
Wine cooler	Wine Cooler in cabinet
Hot water system	220V + engine
Water pressure system	electrical
Ice maker	Ice Maker with cabinet and sink
Coffee maker	Remote High Low Coffee machine
Owners cabin	double bed State room / Master VIP & Office with 8" memory foam mattress
Wardrobe	hanging/drawers/shelves
Bathroom	en suite
Toilet	en suite Tecma Silence plus
Toilet system	electric
Wash basin	in the bathroom
Shower	en suite
Guest cabin 1	State room / Master VIP & Office with 8" memory foam mattress
Wardrobe	yes
Bathroom	en suite
Toilet	en suite Tecma Silence plus
Toilet system	electric
Wash basin	in the bathroom
Shower	en suite
Guest cabin 2	State room / Master VIP & Office with 8" memory foam mattress
Wardrobe	yes
Bathroom	en suite
Toilet	en suite Tecma Silence plus
Toilet system	electric
Wash basin	in the bathroom
Shower	en suite
Washing machine	Miele
Dryer	Miele
Ironing facilities	Sliding Ironing Board
Wet bar	On aft deck with grill



ALTIMA EXPRESS COUPE 65

Tender garage	yes
Extra info	Safe in master bedroom

MACHINERY

No of engines	2
Make	Volvo Penta
Type	D13-900
HP	900
kW	662.40
Fuel	diesel
Maximum speed (kn)	28
Cruising speed (kn)	19
Engine cooling system	freshwater heat exchanger
Drive	shaft
Shaft seal	yes
Engine controls	electrical
Gearbox	hydraulic
Bowthruster	electric
Sternthruster	electric
Exhaust	watercooled
Propeller type	fixed
Propeller blades	5 Blade Propeller 32" 82cm
Propeller shaft material	stainless steel Dublex
Shaft lubrication	water
Electric bilge pump	6x 24v bilge pump w/high water alarm
Bilge alarm	yes
Electrical installation	yes
Generator	wet exhaust 21kw Onan
Generator 2	wet exhaust 12.5 kw Mase VS Speed
Batteries	16x AGM 8D Battery
Generator battery	yes



ALTIMA EXPRESS COUPE 65

Bowthruster battery	yes
Sternthruster battery	yes
Battery monitor	yes
Battery charger/inverter	yes
Diode battery combiners	yes
Shorepower	with cable 2x
Watermaker	HP 28 gal. p/h 108lt
Stabilizers	0-speed 2x Quick Gyro
Trimtabs	Humphrey interceptor with automatic trim control
Extra info	Automatic oil changing system engines and generators
Extra info	Double Racor Fuel filters

NAVIGATION

Compass	yes
Electric compass	yes
Multi control display	3x Sea Zone Monitors
Depth sounder	Garmin
Depth sounder/log	yes
VHF	yes
Autopilot	Garmin
Rudder angle indicator	yes
Radar/GPS/plotter	3x Garmin 16' monitors 41cm
Navtex	yes
Wifi antenna	yes
Electronic chart(s)	yes
AIS transceiver	yes
Radio receiver	yes
Camera	yes
Navigation lights	yes
Searchlight	2x
Extra info	3x Joystick Docking Station



EQUIPMENT

Fixed windscreen	yes
Cockpit cushions	yes
Cockpit table	yes
Cockpit chairs	yes
Bathing platform	Hydraulic swim platform with center steps
Boarding ladder	stainless steel
Transom door	yes
Anchor	70lbs S/S anchor
Anchor chain	80meter 10mm chain
Windlass	electrical
Deck wash	Sea & fresh water bow and stern
Sea railing	stainless steel Oval heavy duty guardrail
Wiper	yes
Clearview window	yes
Horn	air pressure Kahlenberg dual air Horns
Alarm system	Vanemar Boat Security System Monitoring 24/7
TV	55" (140cm) salon 48" (122cm) master 27" (69cm)VIP 3x Samsung TV
TV receiver	Internet and TV domes Scout
Surround Sound System	Garmin Fusion sound system in every room
Cockpit speakers	yes
Speakers in salon	yes
Speakers in cabin	yes
Extinguisher in engine room	Automatic Fire extinguisher
Extra info	4 Cameras in the engine room & lazarette



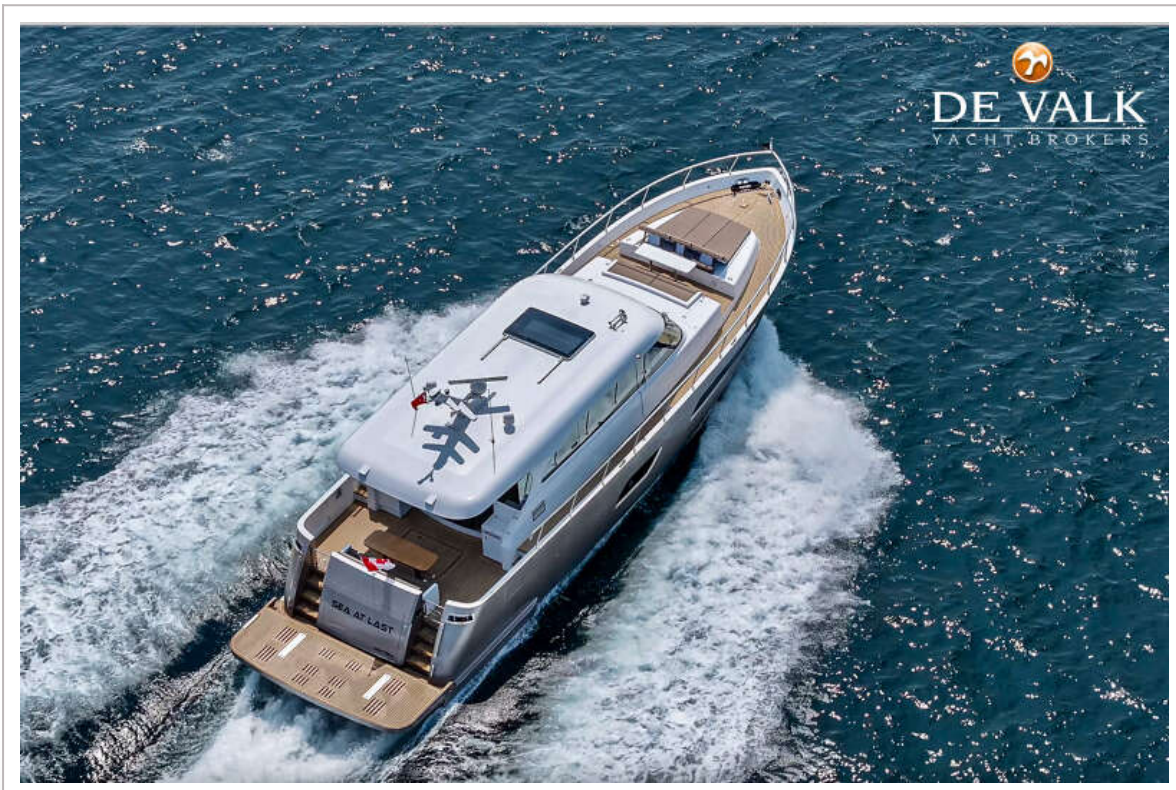
ALTIMA EXPRESS COUPE 65



ALTIMA EXPRESS COUPE 65



ALTIMA EXPRESS COUPE 65



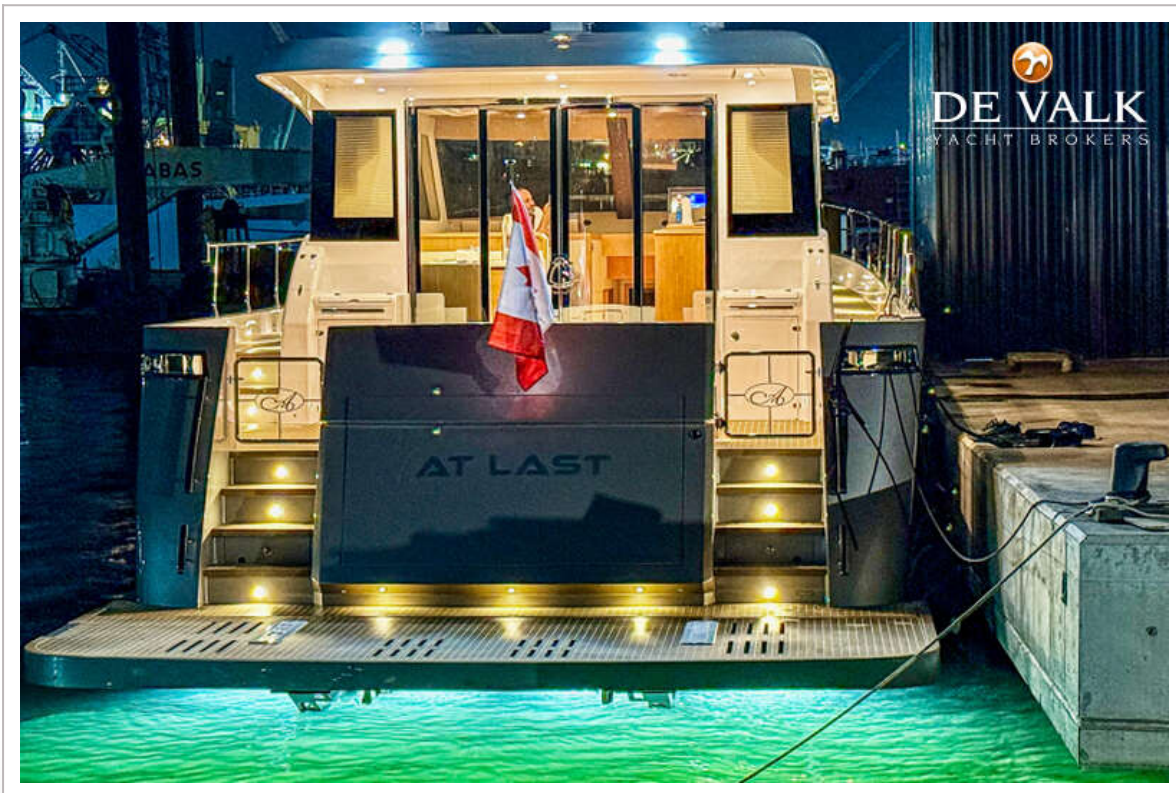
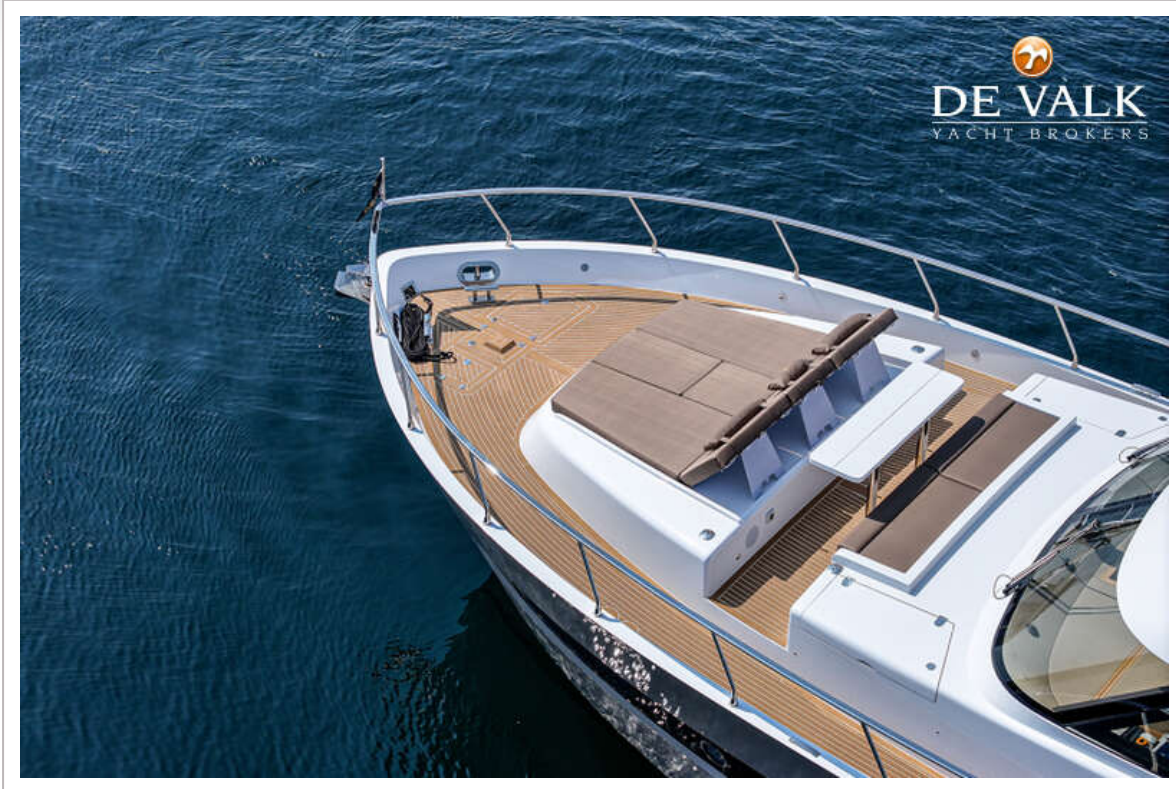
ALTIMA EXPRESS COUPE 65



ALTIMA EXPRESS COUPE 65



ALTIMA EXPRESS COUPE 65



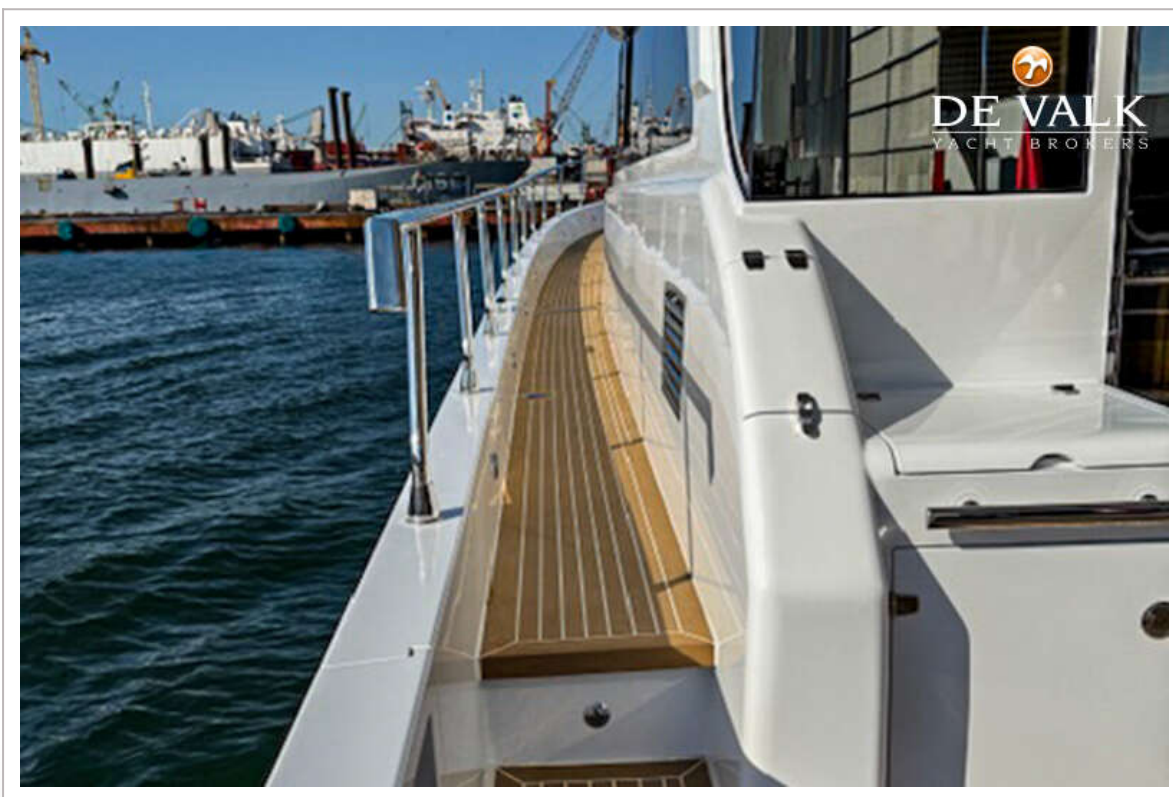
ALTIMA EXPRESS COUPE 65



ALTIMA EXPRESS COUPE 65



ALTIMA EXPRESS COUPE 65



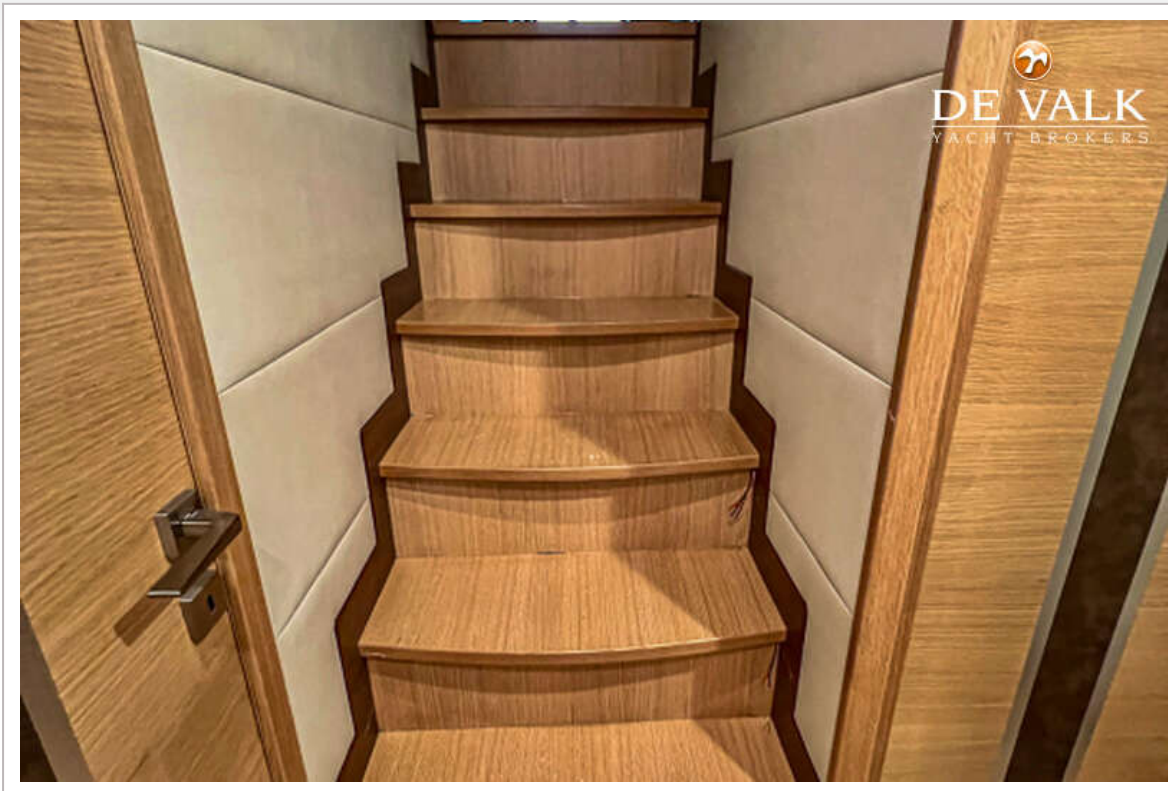
ALTIMA EXPRESS COUPE 65



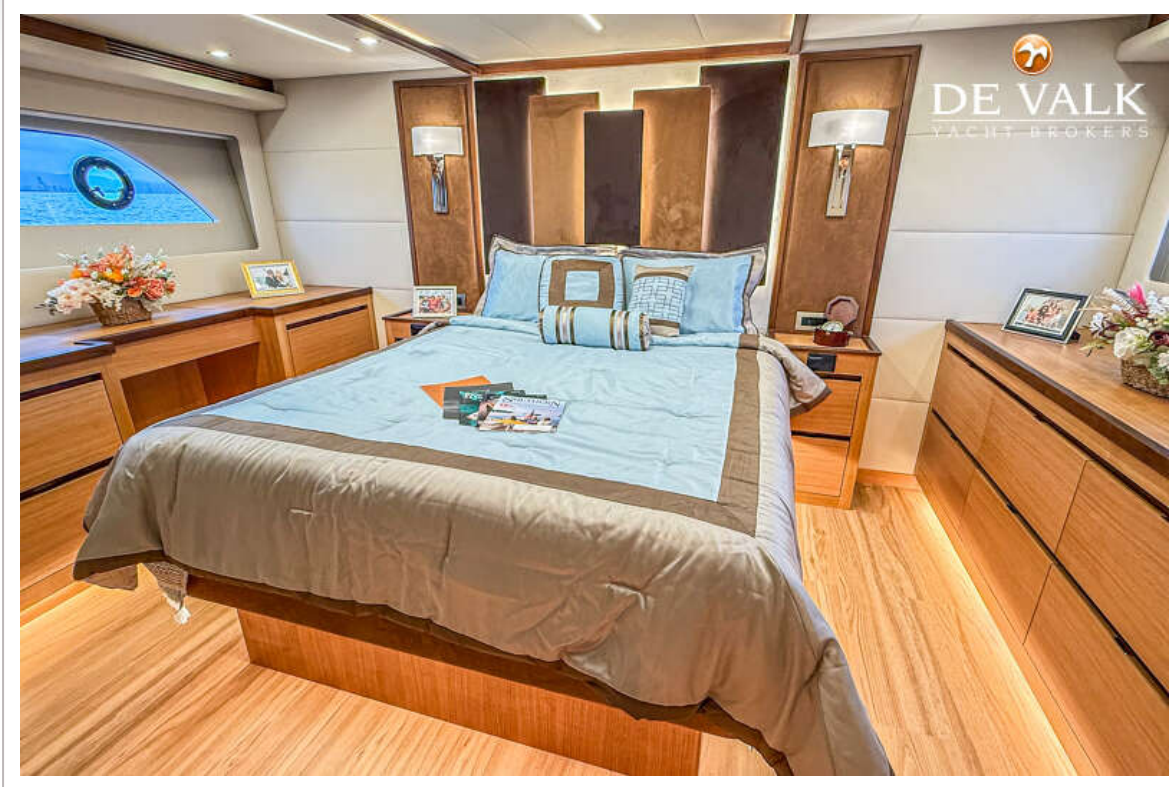
ALTIMA EXPRESS COUPE 65



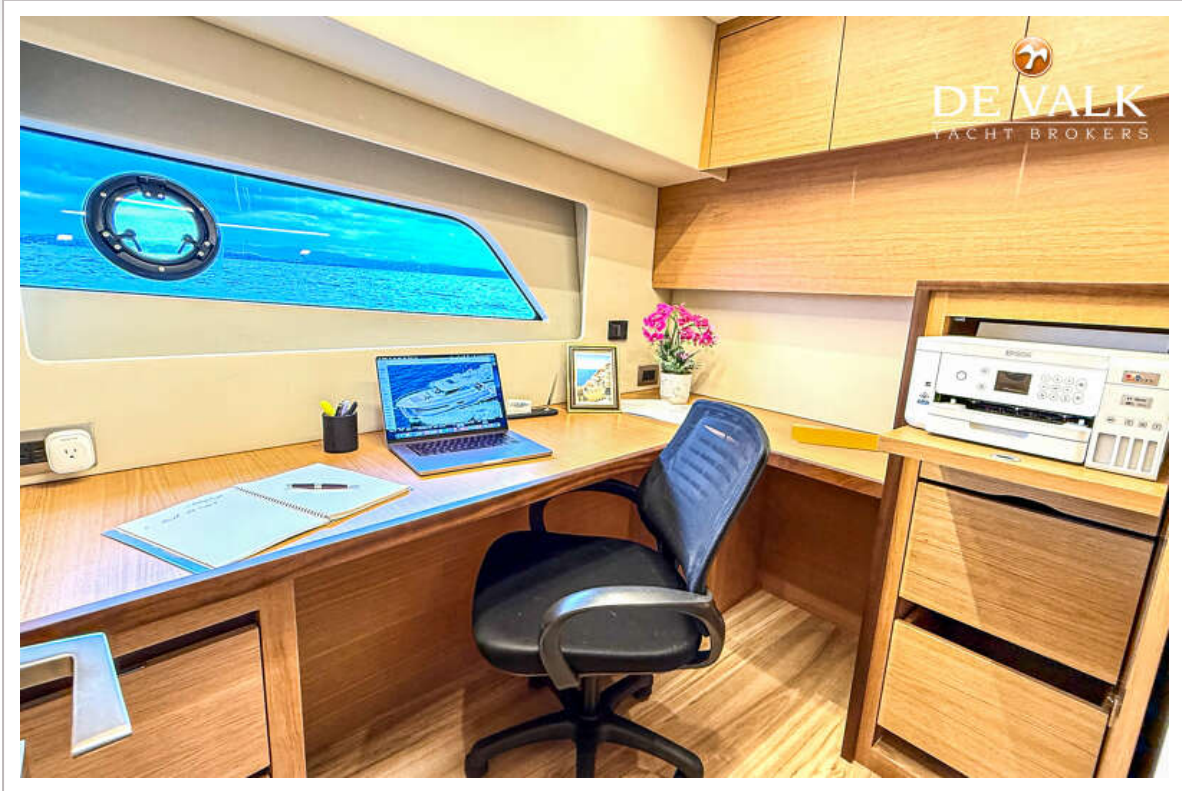
ALTIMA EXPRESS COUPE 65



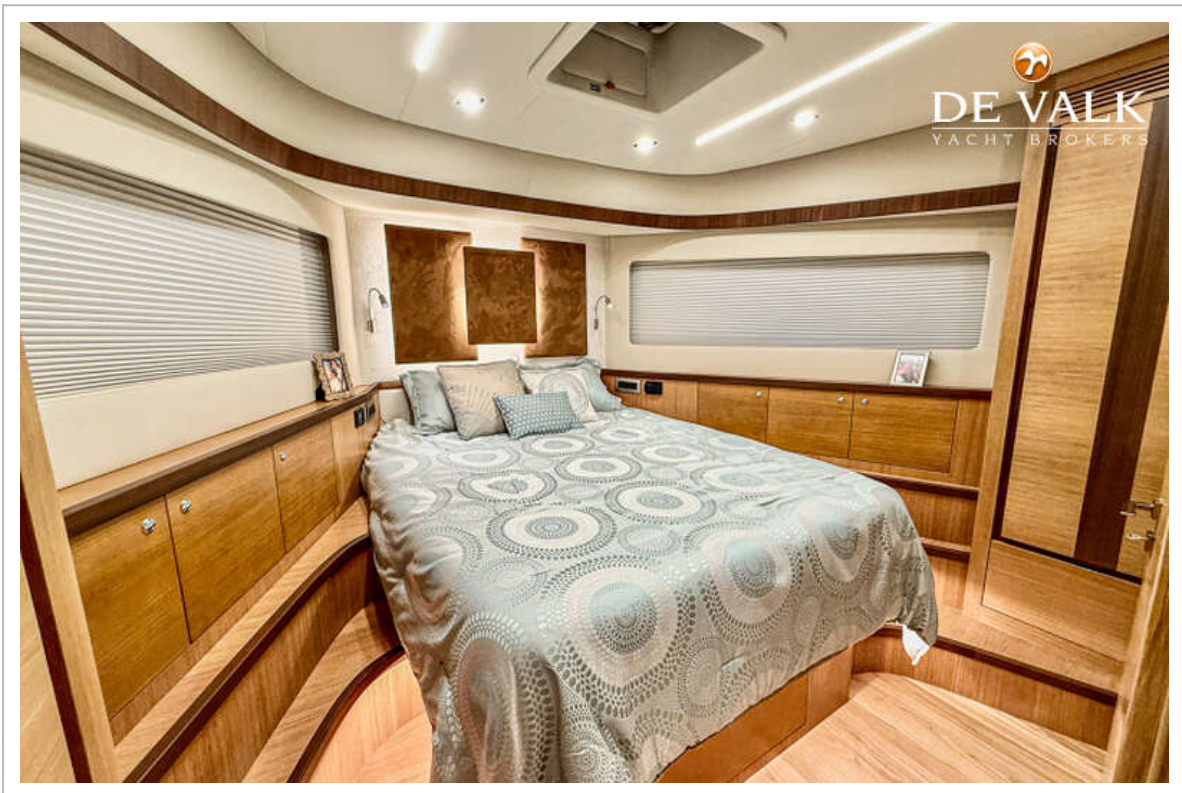
ALTIMA EXPRESS COUPE 65



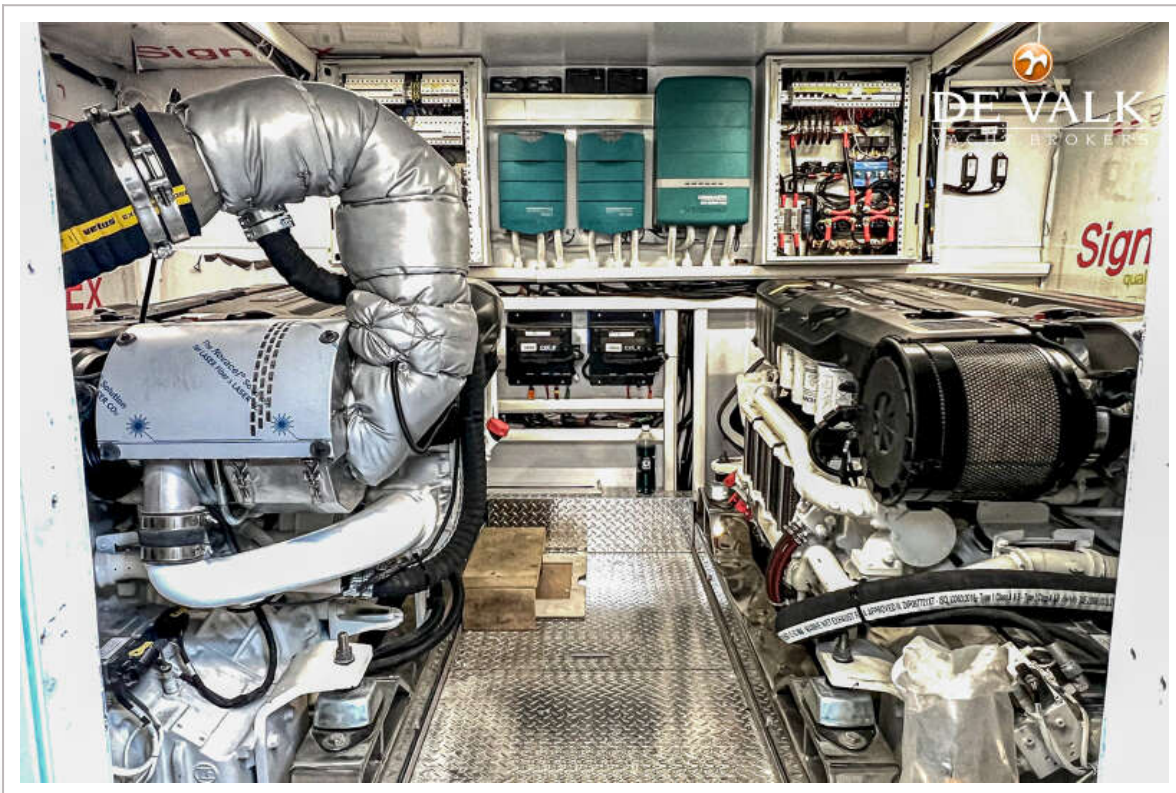
ALTIMA EXPRESS COUPE 65



ALTIMA EXPRESS COUPE 65



ALTIMA EXPRESS COUPE 65



ALTIMA EXPRESS COUPE 65

