



KRUISKAMP BAKDEKKER 1400

KRUISKAMP BAKDEKKER 1400

BROKER'S COMMENTS

The Kruiskamp Bakdekker 1400 (2005) is a 14.00 m steel motor yacht with a classic Dutch design. Powered by a 135 hp Perkins Engines diesel engine with shaft drive and bow thruster, she offers reliable and easy handling. She features a saloon, wheelhouse, galley and dinette, plus an owner's cabin and bathroom, with 4 berths in total. Comfort is ensured by diesel heating and a full domestic fit-out including oven, fridge, freezer and washing machine. Equipped with a generator, solar panels, AIS, VHF and electric windlass.

Joep Molenaar

SPECIFICATIONS

Dimensions	14.00 x 4.20 x 1.20 (m)	Builder	
Built	2005	Cabins	1
Material	Steel	Berths	4
Engine(s)	1 x Perkins Sabre M135 diesel	Hp/Kw	135.00 (hp), 99.36 (kw)
Asking price	€ 249.500 (VAT Paid)	Lying	at sales office

CONTACT

Sales office	De Valk Loosdrecht B.V.	Telephone	+31 (0)35 582 90 30
Address	't Breukeleveense Meentje 6 1231LM Loosdrecht / Wijdmeren NL	E-mail	loosdrecht@devalk.nl

DISCLAIMER

These particulars are given in good faith as supplied but cannot be guaranteed.



GENERAL

Model	KRUISKAMP BAKDEKKER 1400
Type	motor yacht
LOA (m)	14,00
LWL (m)	13,80
Beam (m)	4,20
Draft (m)	1,20
Air draft min (m)	2,95
Year built	2005
Displacement (t)	18
CE norm	C
Hull material	steel
Hull shape	hard chine
Superstructure material	steel
Rubbing strake	stainless steel
Deck material	steel
Deck finish	non-skid paint
Superstructure deck finish	non-skid paint
Antifouling (year)	2022
Window frame	aluminium
Window material	double glazing
Deckhatch	X 2
Portholes	steel X 6
Mast can be lowered	manual
Fuel tank (litre)	stainless steel Max 1100 L
Fuel daytank (litre)	yes
Level indicator (daytank)	yes
Freshwater tank (litre)	stainless steel 1000 L
Blackwater tank (litre)	200 L
Level indicator (blackwater)	yes
Wheel steering	hydraulic



Outside helm position	hydraulic
More info on paintwork	Fully painted 2017

ACCOMMODATION

Cabins	1
Berths	4
Interior	yes
Floor	wood
Saloon	yes
Heating	central heating Kabola
Chart table	yes
Dinette	yes
Dinette to convert into berth	Can be converted to 2 sleeping places
Opening door to aft deck	yes
Galley	yes
Countertop	plastic
Sink	stainless steel
Cooker	electric
Gas alarm	yes
Microwave/oven combi	Samsung Smart Oven
Fridge	Bosch
Freezer	Bosch
Hot water system	220V
Coffee maker	yes
Owners cabin	French bed
Wardrobe	hanging and shelves
Bathroom	yes
Toilet	yes
Toilet system	Three-way shut-off valve
Wash basin	in the bathroom
Shower	yes



Extra info	Boiler 40 L 230 V
Washing machine	Bosch Maxx 6 VarioPerfect

MACHINERY

No of engines	1
Make	Perkins Sabre
Type	M135
HP	135
kW	99.36
Fuel	diesel
Drive	shaft
Engine controls	hydraulic ZF Hurth (45A - 2.0)
Gearbox	hydraulic
Bowthruster	electric
Exhaust	watercooled
Propeller type	fixed
Propeller blades	4 blade propeller (diameter: 23" x 16")
Propeller shaft material	stainless steel
Electric bilge pump	Vetus EBP60
Generator	Northern Lights M773LW3-7kW
Batteries	5x Gel batteries
Generator battery	VMF Calcium Battery 55054
Bowthruster battery	2 x Rolls Battery Engineering S12-230AGM (2022)
Windlass battery	yes
Battery monitor	Victron Energy BMV - 501
Inverter	yes
Solar panel	X 2
Shorepower	with cable

NAVIGATION

VHF	Sailor 6246
------------	-------------



Personal computer	yes
AIS receiver	yes
AIS transponder	yes
Navigation lights	yes
Searchlight	yes
Extra info	Anchor light

EQUIPMENT

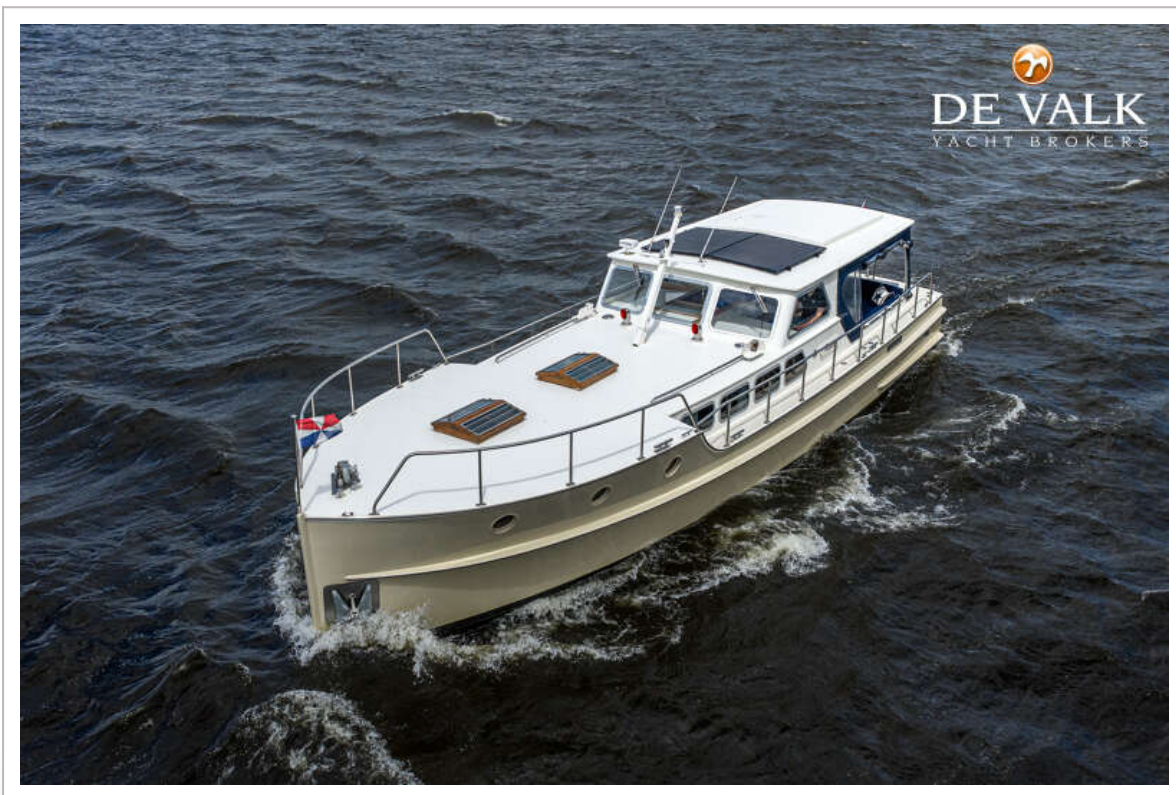
Fixed hardtop	yes
Cockpit cover	yes
Cockpit cushions	yes
Boarding ladder	yes
Anchor	Electric
Anchor chain	yes
Windlass	electrical
Sea railing	stainless steel
Grab rail (superstructure)	stainless steel
Wiper	2 x Vetus
Horn	yes
TV	Samsung UE32EH400
Radio-cd player	Pioneer DEH-4200SD



KRUISKAMP BAKDEKKER 1400



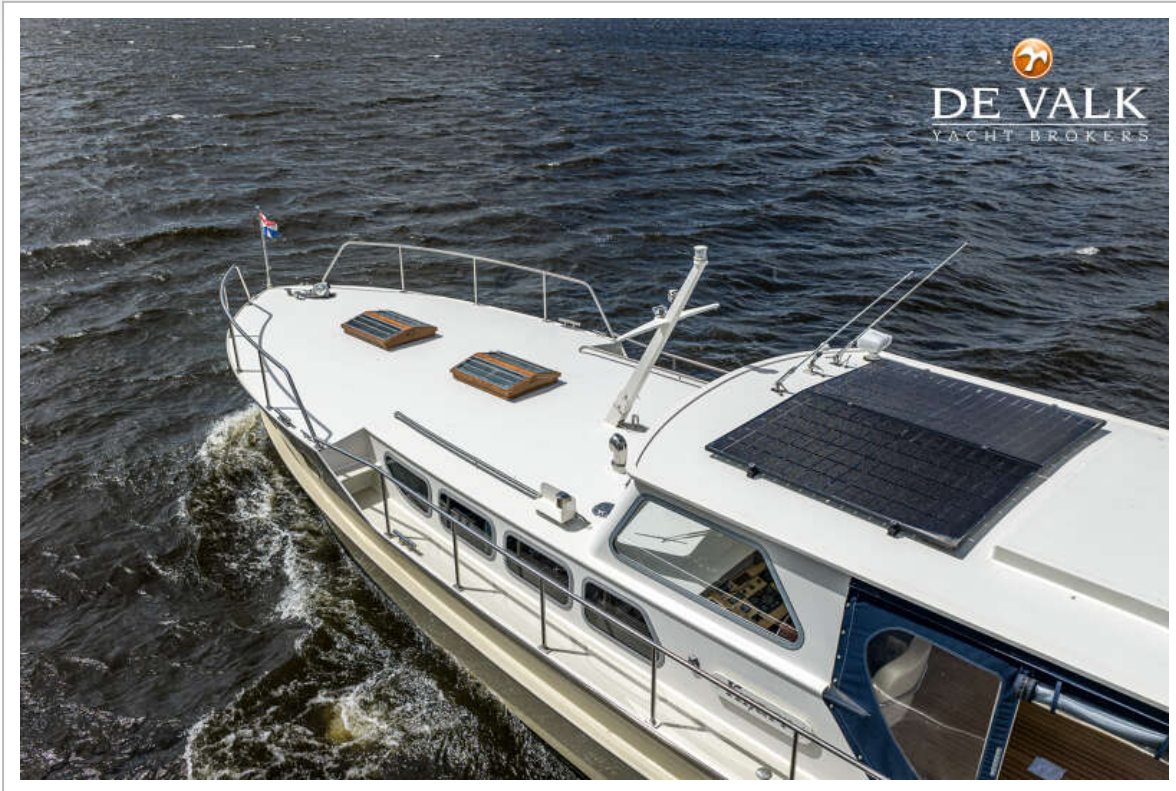
KRUISKAMP BAKDEKKER 1400



KRUISKAMP BAKDEKKER 1400



KRUISKAMP BAKDEKKER 1400

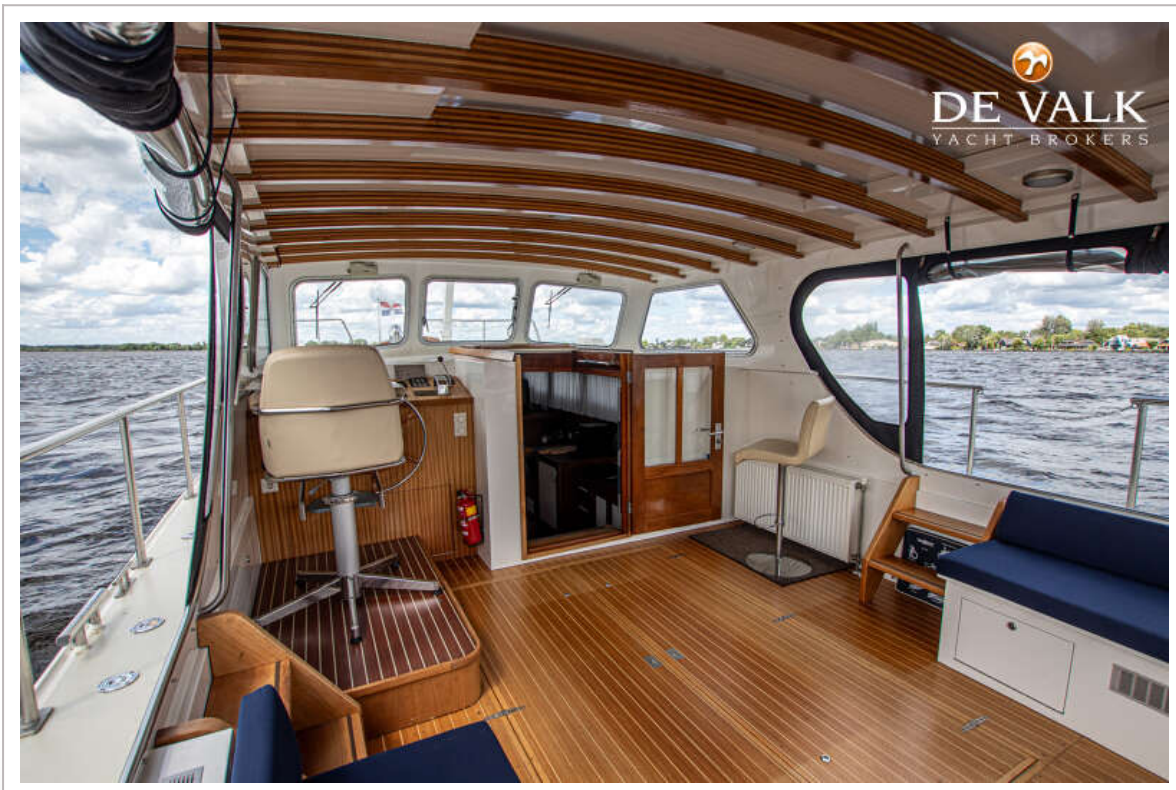
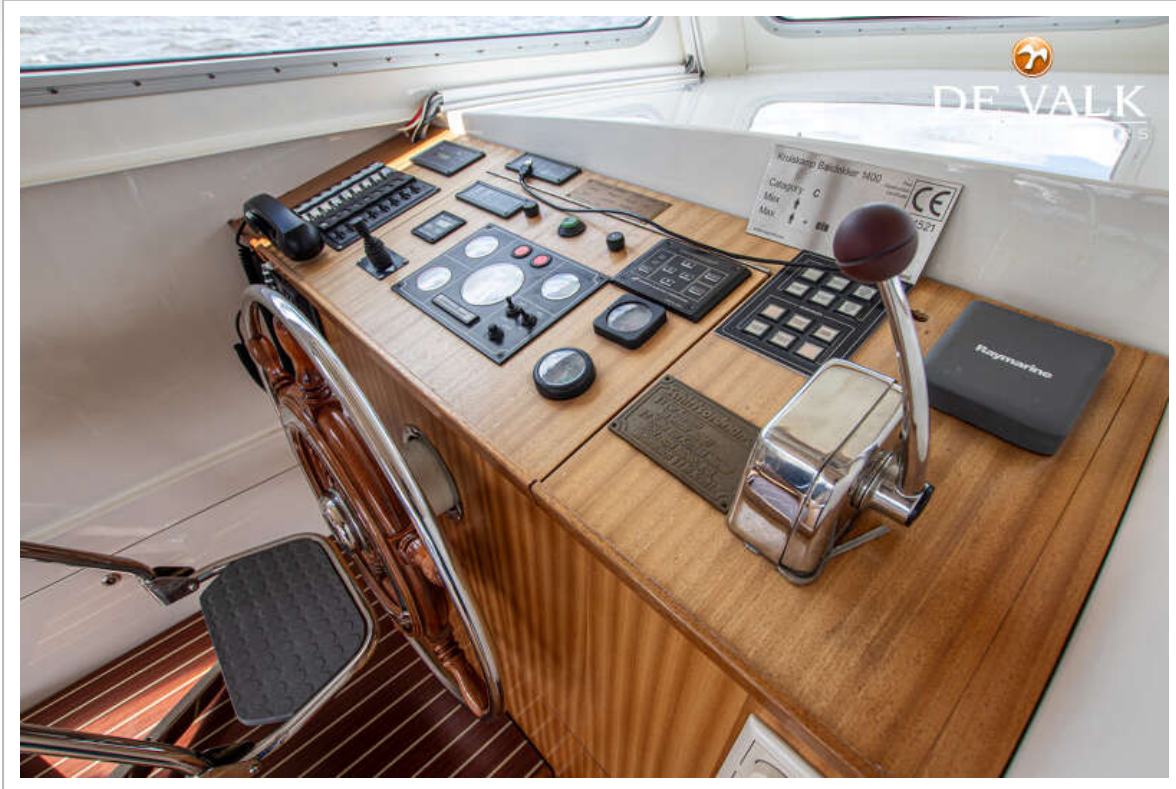




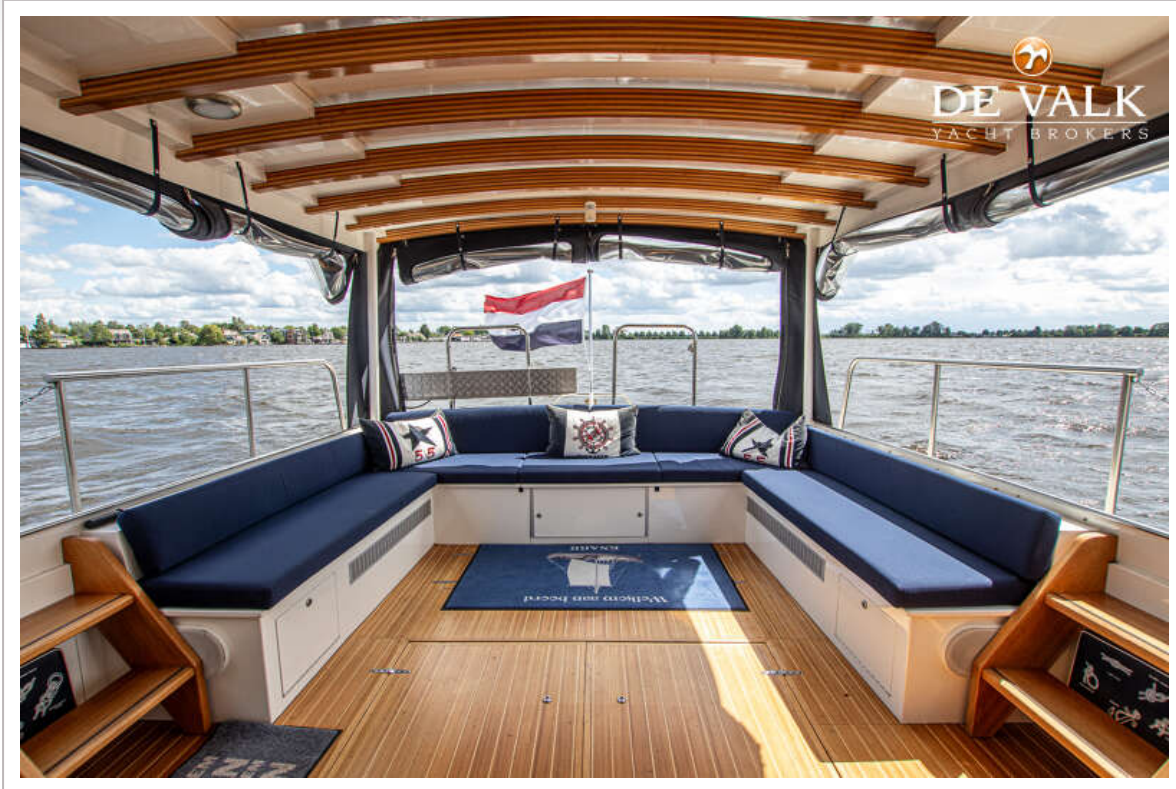
KRUISKAMP BAKDEKKER 1400



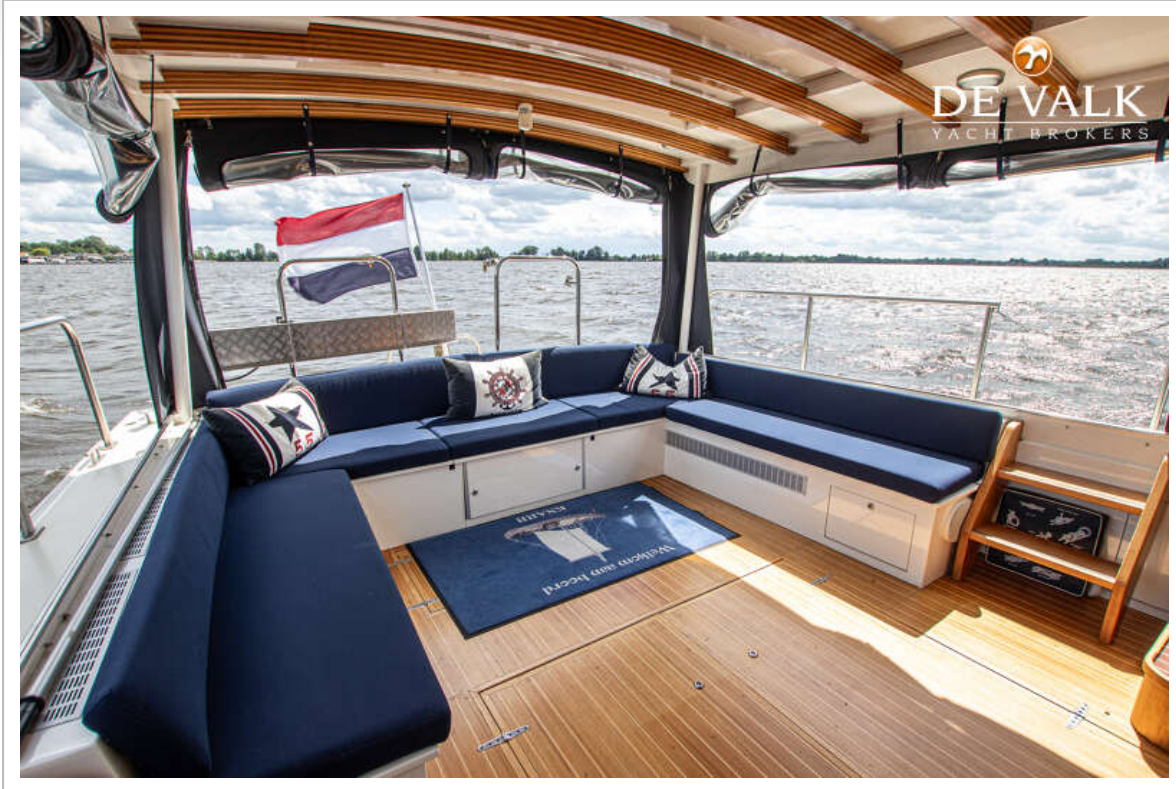
KRUISKAMP BAKDEKKER 1400



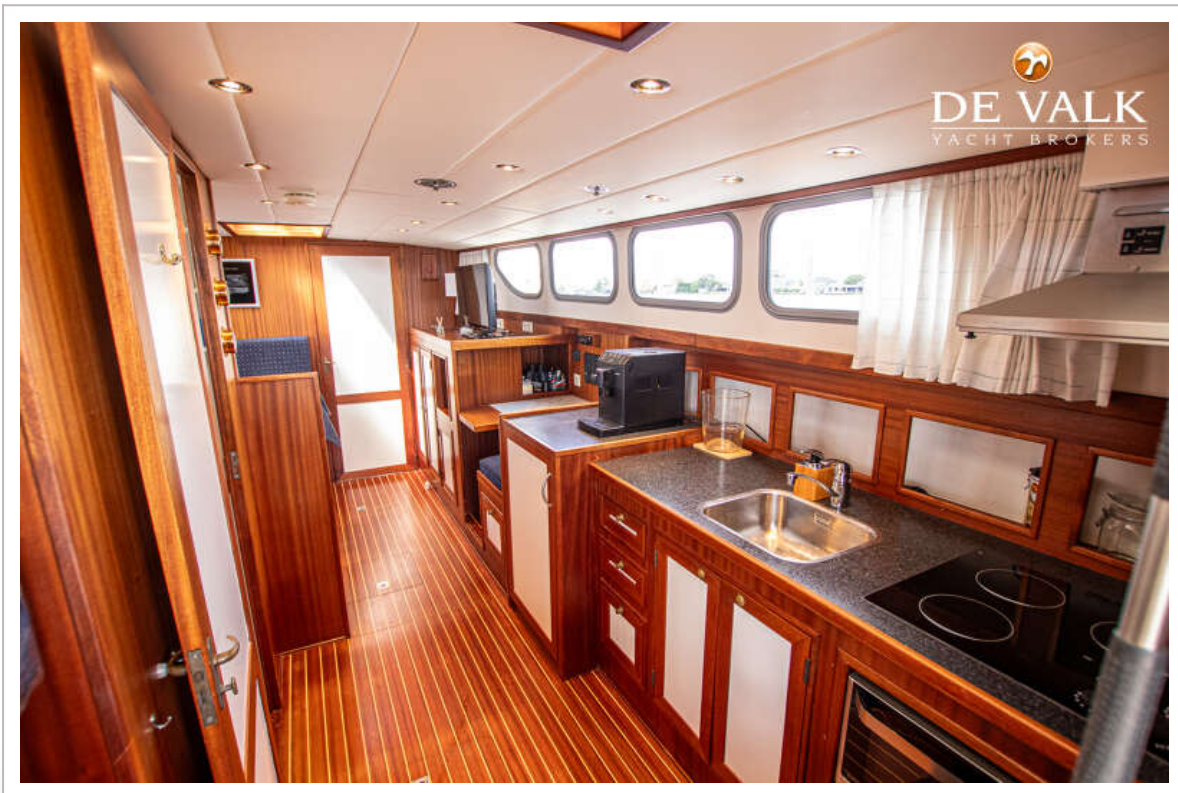
KRUISKAMP BAKDEKKER 1400

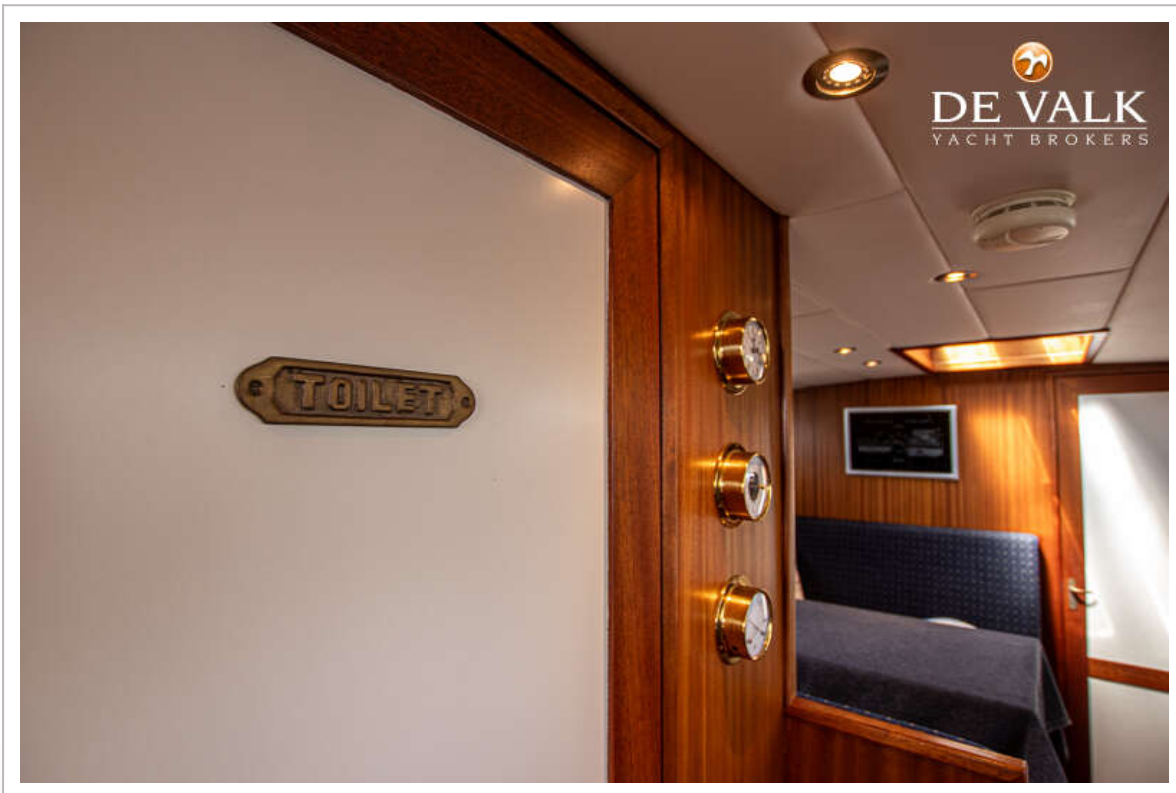
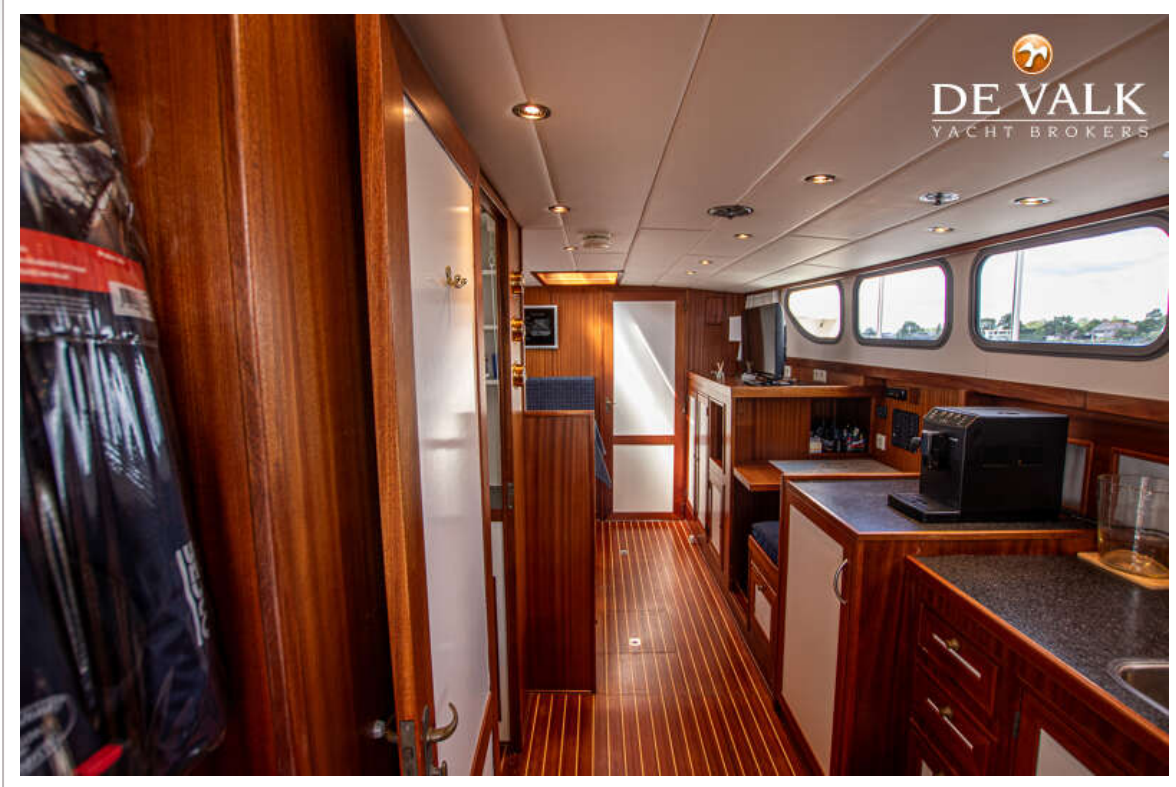


KRUISKAMP BAKDEKKER 1400

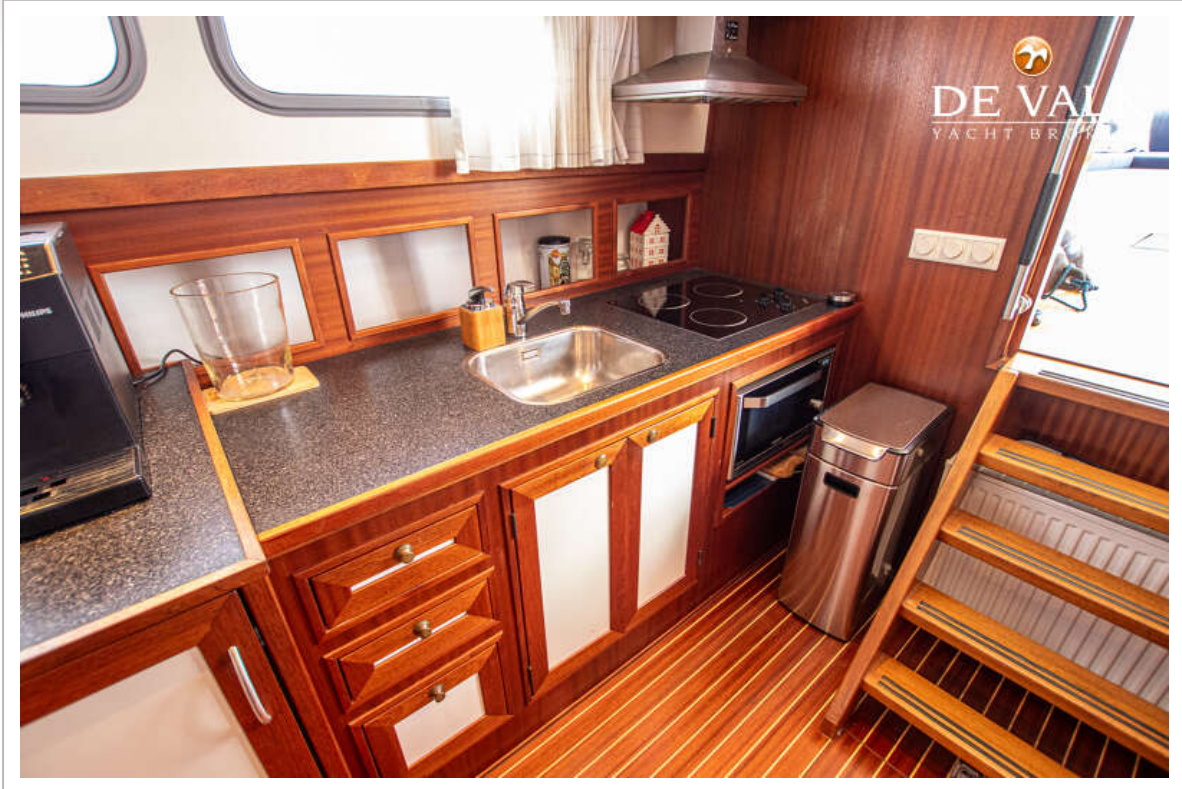


KRUISKAMP BAKDEKKER 1400





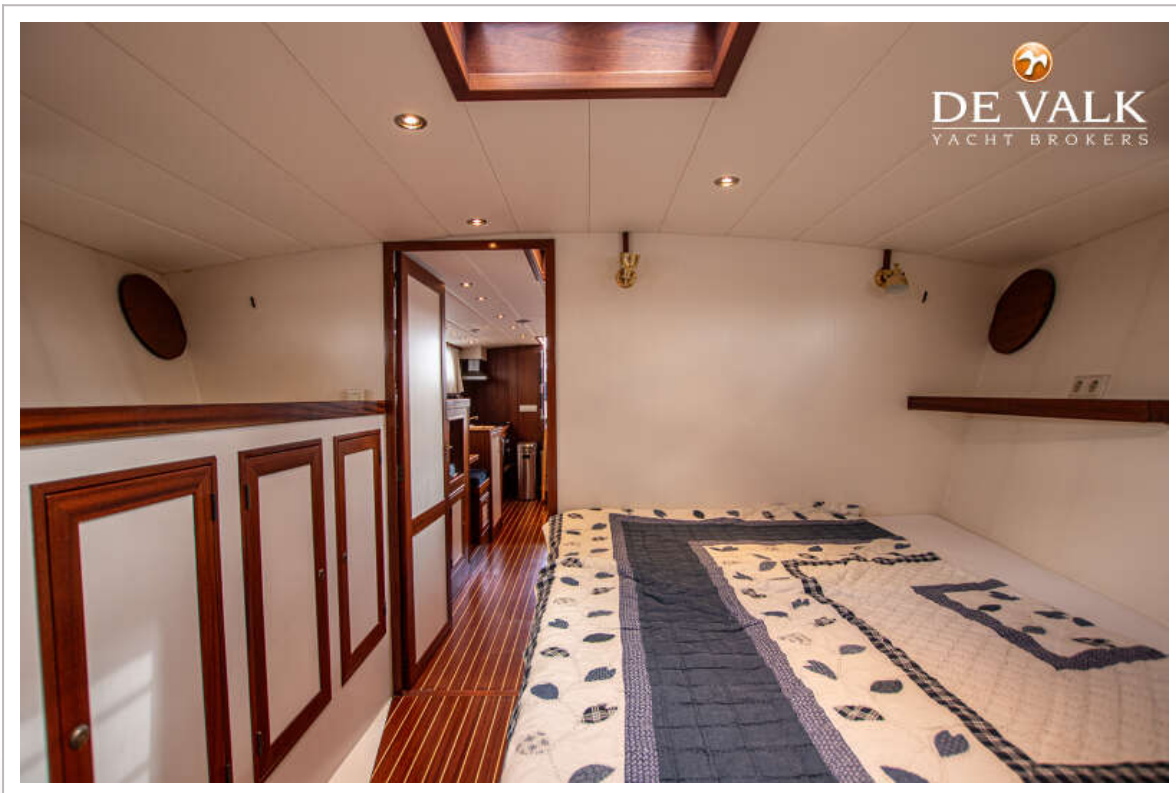
KRUISKAMP BAKDEKKER 1400

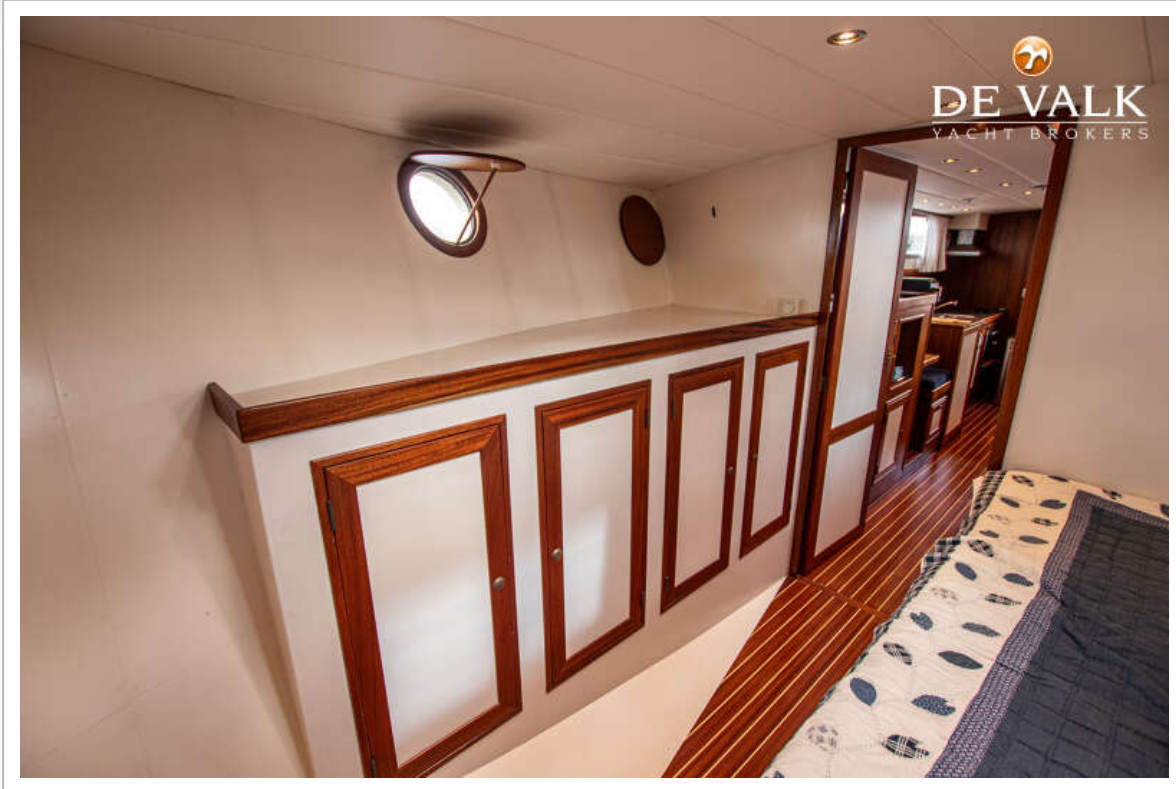


KRUISKAMP BAKDEKKER 1400

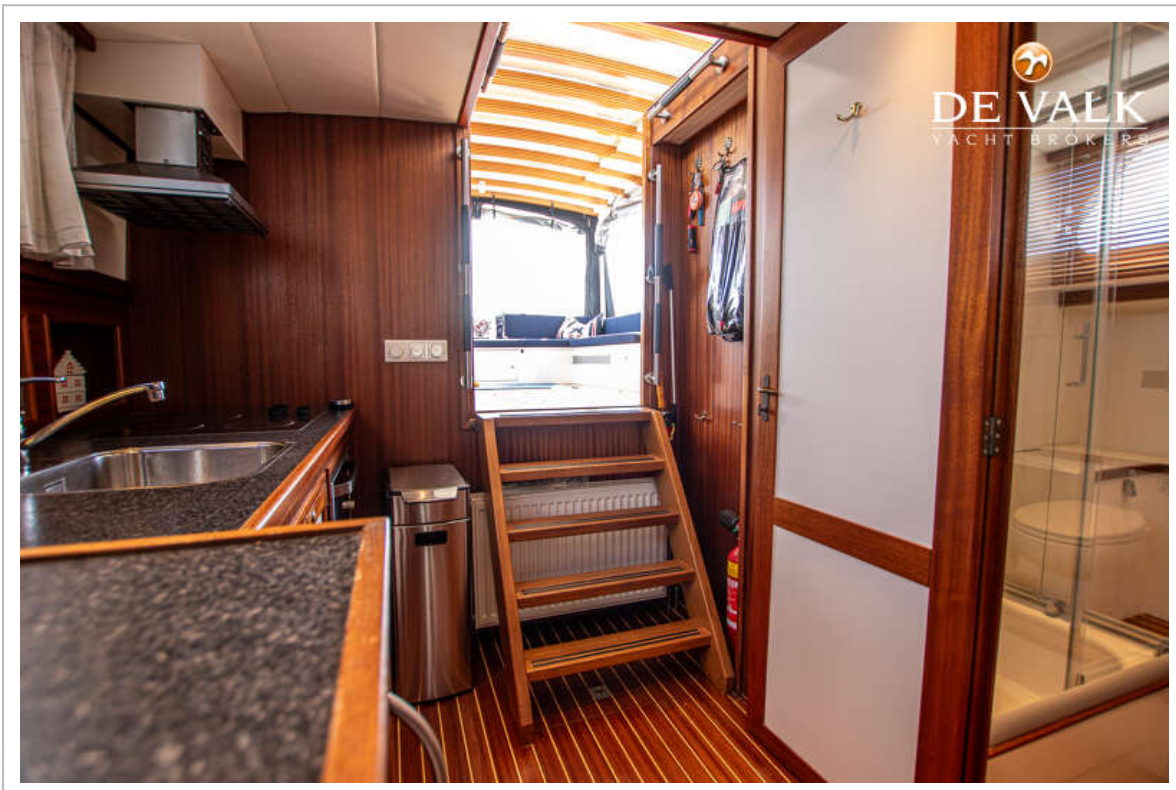


KRUISKAMP BAKDEKKER 1400



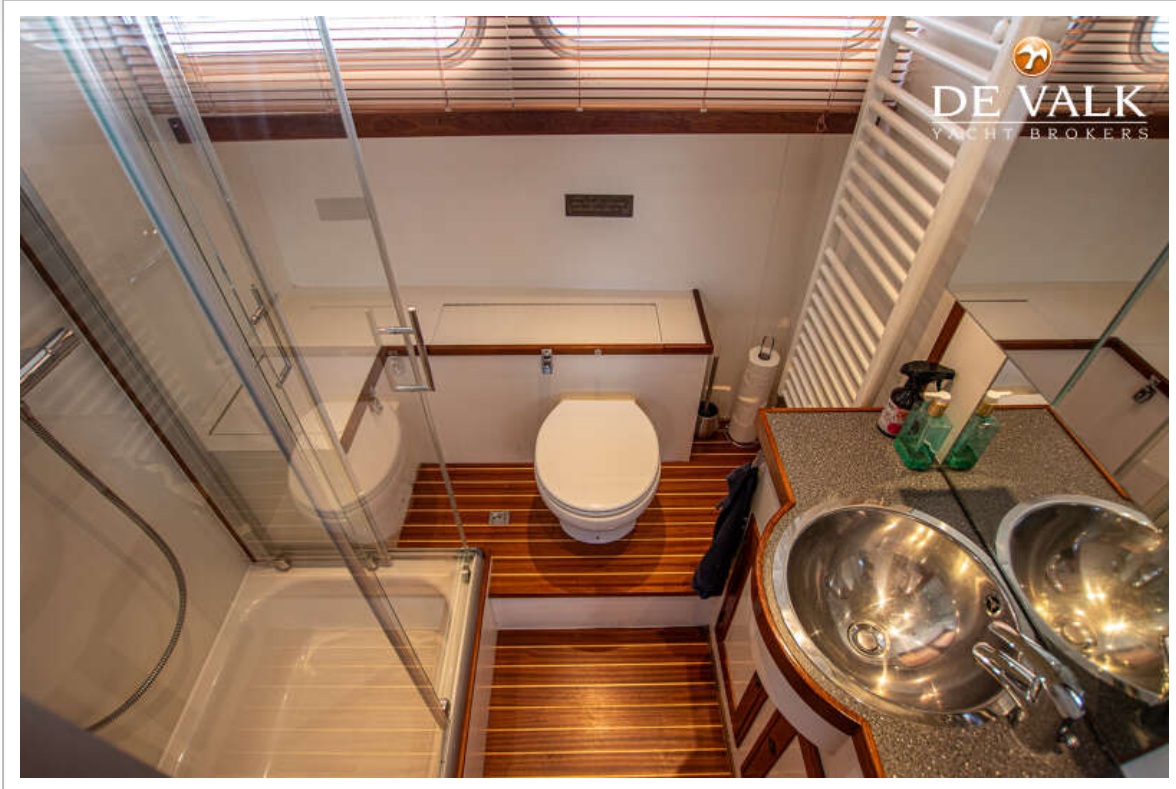


KRUISKAMP BAKDEKKER 1400





KRUISKAMP BAKDEKKER 1400



KRUIKAMP BAKDEKKER 1400



