



DE VALK
YACHT BROKERS



PILOT 50



DE VALK
YACHT BROKERS

BROKER'S COMMENTS

This robust Pilot 50, built by VDL Shipyard, combines excellent cruising capabilities with luxury and spacious accommodation. Featuring two cabins, four berths, air conditioning, central heating, and twin powerful Volvo Penta engines, she is perfectly suited for extended cruising and comfortable onboard living. Her solid Dutch construction, comprehensive equipment, and well-maintained condition make this an attractive motor yacht for discerning boating enthusiasts.

Ian Pols

SPECIFICATIONS

Dimensions	14.99 x 4.82 x 1.45 (m)	Builder	VDL Shipyard
Built	1998	Cabins	2
Material	Steel	Berths	4
Engine(s)	2 x Volvo Penta TAMD73 EDC diesel	Hp/Kw	2 x 430.00 (hp), 316.48 (kw)
Asking price	€ 349.000 (VAT Paid)	Lying	elsewhere / Not at sales office

CONTACT

Sales office	De Valk Altena	Telephone	+31 162 727211
Address	Keizersveer 3A 4941 TA Raamsdonksveer NL	E-mail	altena@devalk.nl

DISCLAIMER

These particulars are given in good faith as supplied but cannot be guaranteed.



GENERAL

Model	PILOT 50
Type	motor yacht
LOA (m)	14,99
LWL (m)	13,66
Beam (m)	4,82
Draft (m)	1,45
Air draft (m)	4,76
Air draft min (m)	3,30
Year built	1998
Builder	VDL Shipyard
Country	The Netherlands
Designer	Willem Nieland
Displacement (t)	32
CE norm	B
Hull material	steel
Hull colour	blue
Hull shape	multi hard chine
Superstructure material	steel
Rubbing strake	rubber
Deck material	steel
Deck finish	synthetic teak
Superstructure deck finish	non-skid paint
Cockpit deck finish	non-skid paint
Window frame	aluminium
Window material	double glazing
Deckhatch	aluminium
Portholes	aluminium
Radar arch	collapsible
Fuel tank (litre)	stainless steel 4000
Level indicator (fuel tank)	yes



Freshwater tank (litre)	stainless steel 1250
Level indicator (freshwater)	yes
Blackwater tank (litre)	stainless steel 500
Level indicator (blackwater)	yes
Blackwater tank extraction	deck extraction + pump
Wheel steering	hydraulic
Inside helm position	yes

ACCOMMODATION

Cabins	2
Berths	4
Interior	mahogany
Floor	carpet
Heating	central heating Post Marine Heating Caminus Ketel
Air-conditioning	Ocean Marine 24.000 BTU
Galley	yes
Countertop	corian
Sink	stainless steel
Cooker	electric
Oven	yes
Fridge	yes
Freezer	Vak in de koelkast
Hot water system	on central heating
Water pressure system	electrical
Owners cabin	double bed
Wardrobe	hanging/drawers/shelves
Bathroom	shared
Toilet	en suite
Toilet system	electric
Wash basin	at the toilet
Shower	shared



Guest cabin 1	v-bed
Wardrobe	hanging and shelves
Bathroom	shared
Toilet	separate
Toilet system	electric
Wash basin	in the bathroom
Shower	shared
Washing machine/dryer combi	yes

MACHINERY

No of engines	2
Make	Volvo Penta
Type	TAMD73 EDC
HP	430
kW	316.48
Fuel	diesel
Engine hours	6800
Engine cooling system	freshwater heat exchanger
Drive	shaft
Gearbox	mechanical
Bowthruster	electric 24V, 8 pk
Exhaust	watercooled
Propeller type	fixed
Propeller shaft material	stainless steel
Shaft lubrication	water
Manual bilge pump	yes
Electric bilge pump	yes
Bilge alarm	yes
Electrical installation	12V, 24V & 220V
Generator	wet exhaust Fischer Panda
Start battery	4x 50 Ah Optima red Top



Service battery	8x 200 Ah Gel
Generator battery	1x
Bowthruster battery	yes
Battery monitor	yes
Battery charger/inverter	Mastervolt Mass Combi 24/4000-120
Solar panel	10x Sunwave
Shorepower	with cable

NAVIGATION

Depth sounder/log	Raymarine I70
VHF	2x Raymarine Ray240
Autopilot	Raymarine P70
Rudder angle indicator	yes
Radar	Raymarine
Plotter	Raymarine Hybrid Touch
AIS transceiver	yes
Navigation lights	yes
Searchlight	yes

EQUIPMENT

Bimini	yes
Cockpit cushions	yes
Cockpit table	yes
Deck shower	yes
Anchor	Delta 24 kg
Anchor chain	yes
Windlass	electrical Simpson
Deck wash	yes
Dinghy	Whally
Outboard	Mercury 5pk
Davits	400kg in taal



Sea railing	stainless steel
Life raft	yes
Wiper	yes
Horn	yes
Fenders	yes
Mooring lines	yes
Fire extinguisher	yes



PILOT 50



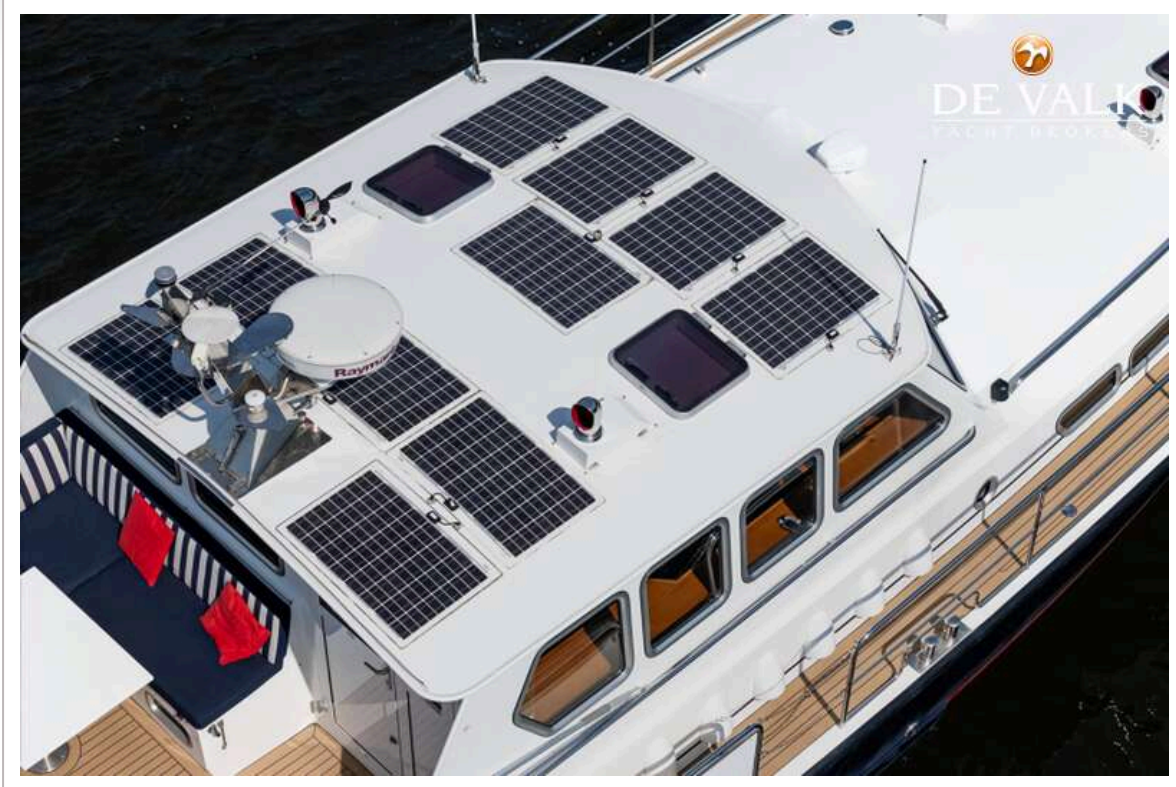
PILOT 50



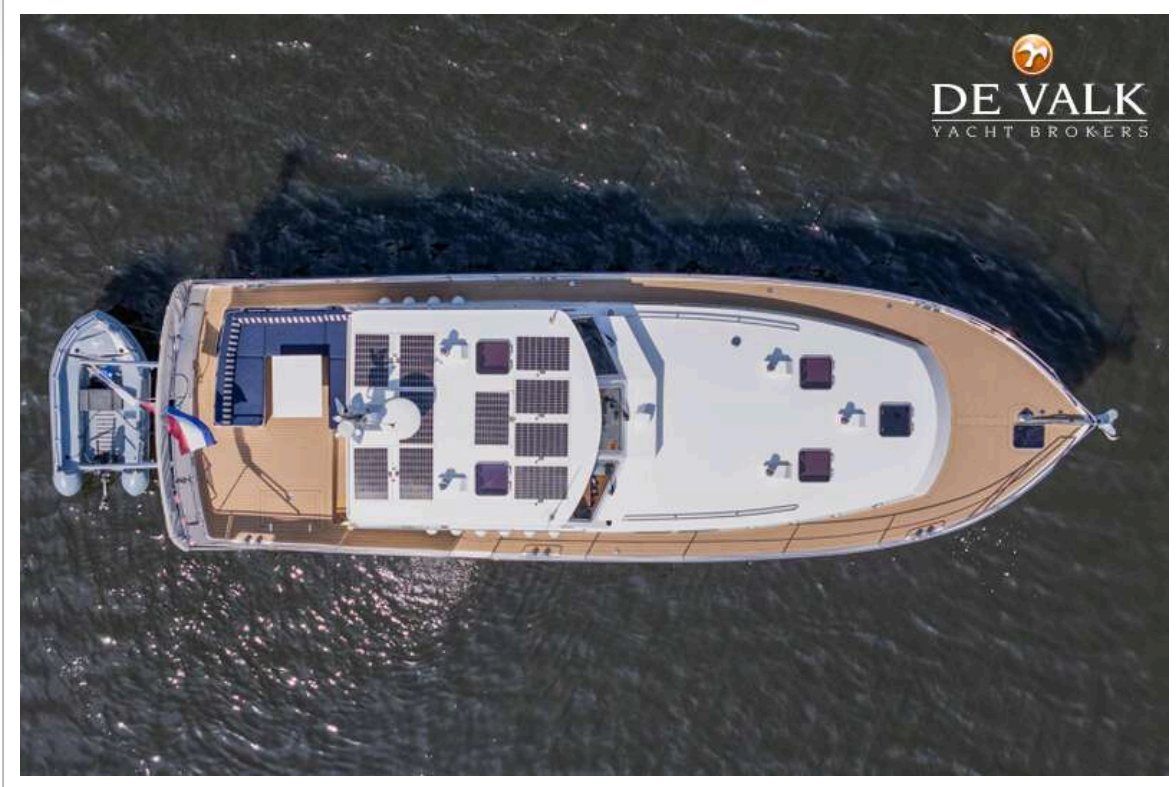
PILOT 50

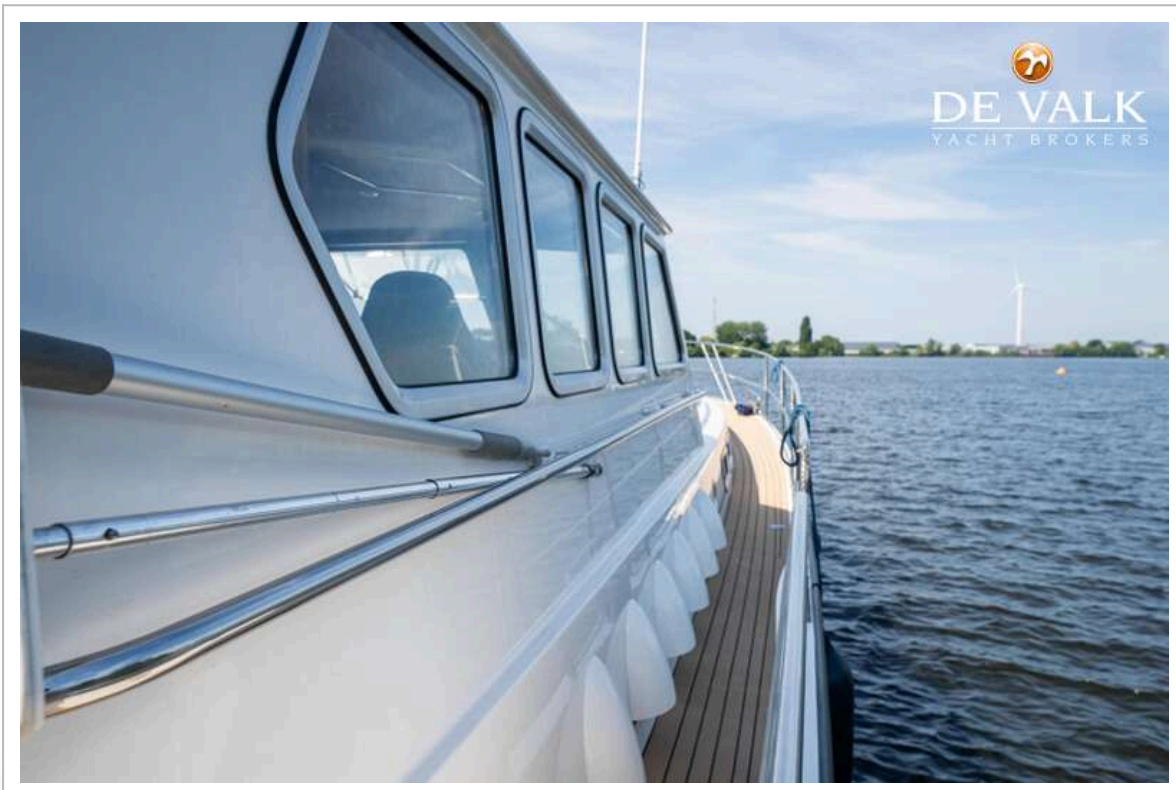


PILOT 50

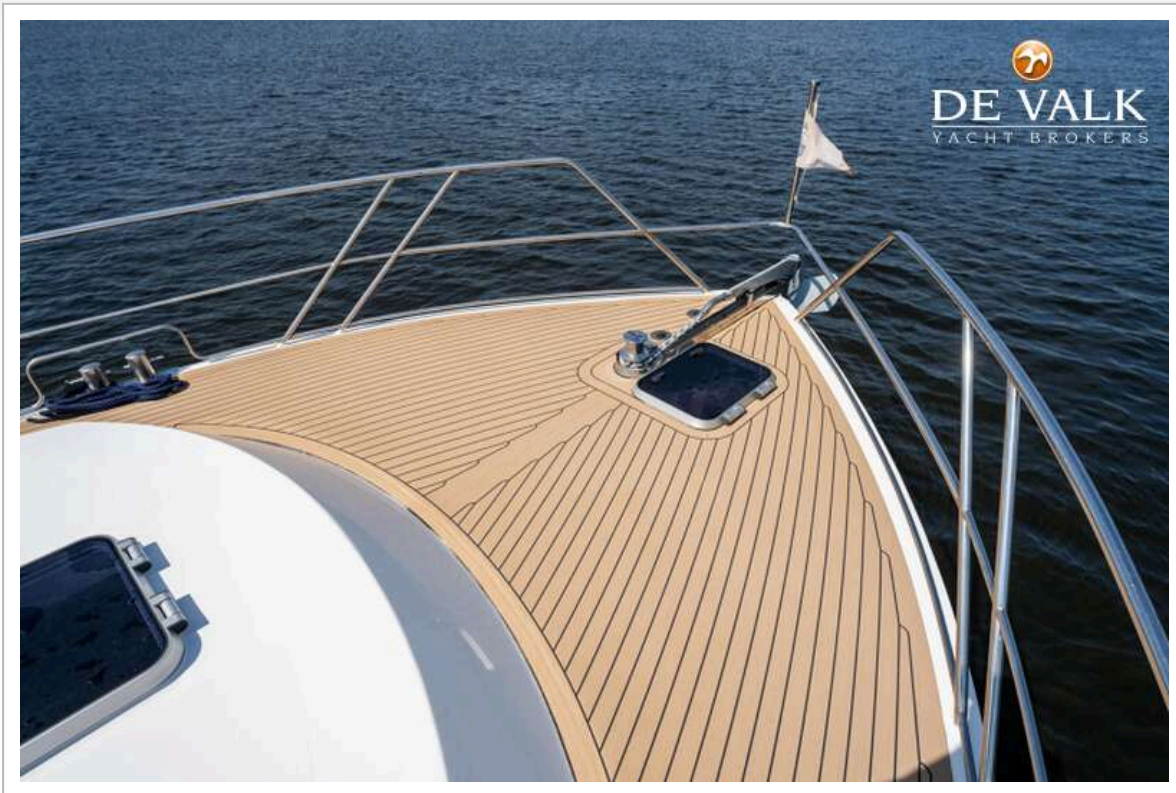


PILOT 50



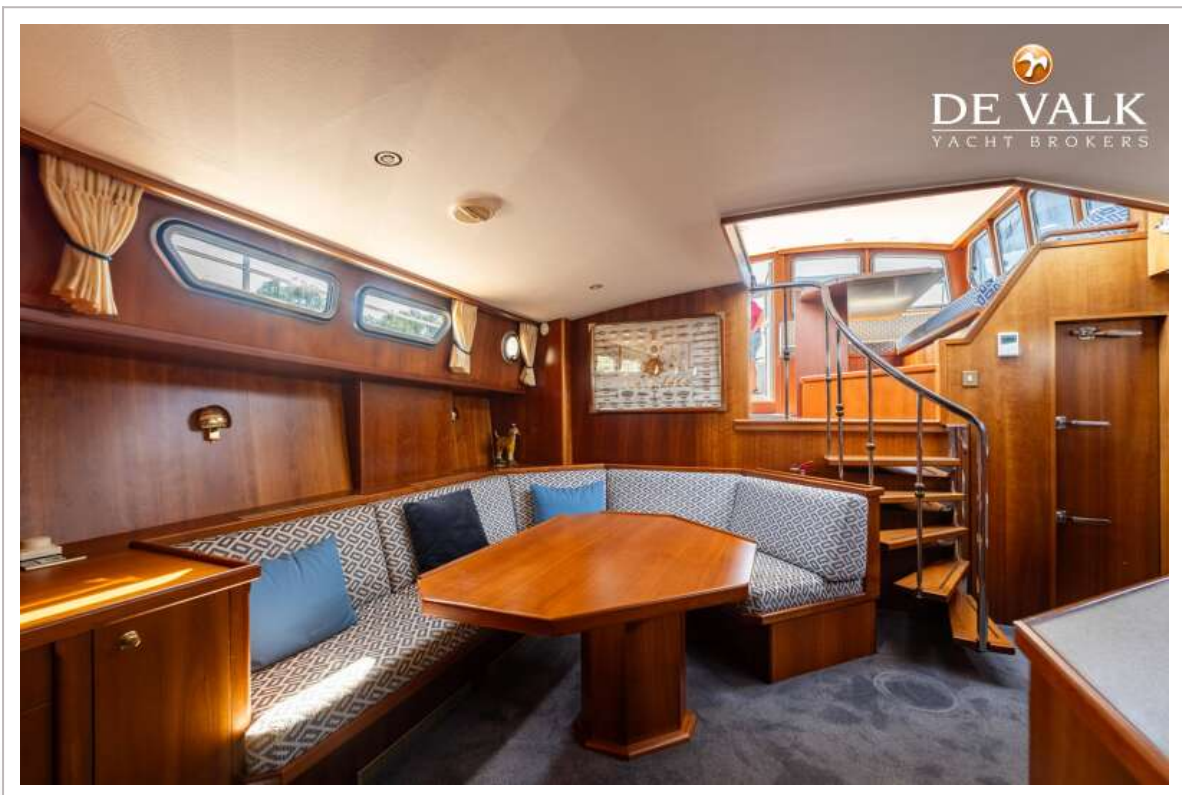


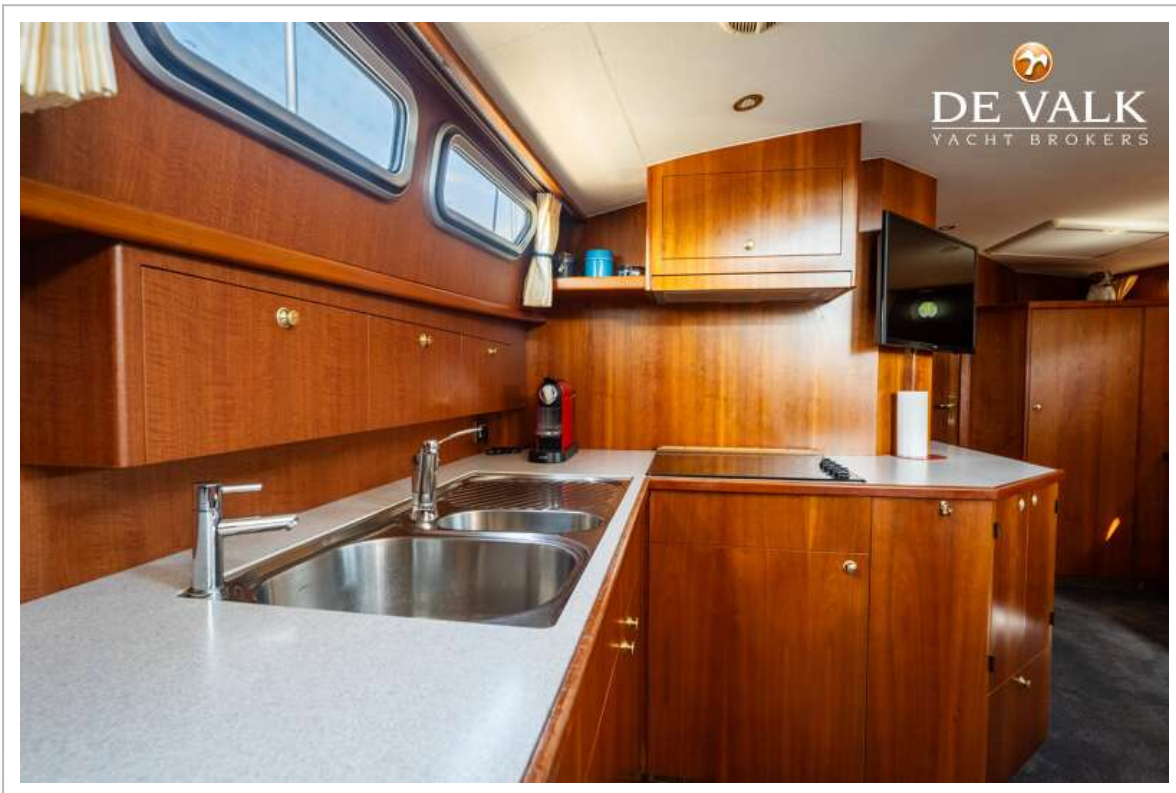




PILOT 50







PILOT 50



