



DE VALK  
YACHT BROKERS



FAIRLINE 50



DE VALK  
YACHT BROKERS

# FAIRLINE 50

## BROKER'S COMMENTS

This Fairline 50 has been purchased via auction and received a full overhaul incl. new paint, instruments, equipment and overhauled Volvo engines worth € 130.000 (invoices available). She is 2 cabin layout with a total of 6 berths. The owner installed a new hard top, cockpit enclosure and extended the bathing platform. Available in South Spain and ready to go.

*Jörg Hellmich*

## SPECIFICATIONS

<b>Dimensions</b>	14.95 x 3.95 x 1.20 (m)	<b>Builder</b>	Fairline
<b>Built</b>	1989	<b>Cabins</b>	2
<b>Material</b>	GRP	<b>Berths</b>	4
<b>Engine(s)</b>	2 x Volvo Penta TAMD61A diesel	<b>Hp/Kw</b>	2 x 600.00 (hp), 441.60 (kw)
<b>Asking price</b>	€ 130.000 (VAT Paid)	<b>Lying</b>	at sales office

## CONTACT

<b>Sales office</b>	De Valk Almeria	<b>Telephone</b>	+34 950 497 825
<b>Address</b>	Puerto Deportivo, Darsena de la Batea 42 04711 Almerimar ES	<b>E-mail</b>	almeria@devalk.nl

## DISCLAIMER

These particulars are given in good faith as supplied but cannot be guaranteed.



# FAIRLINE 50

## GENERAL

<b>Model</b>	FAIRLINE 50
<b>Type</b>	motor yacht
<b>LOA (m)</b>	14,95
<b>Beam (m)</b>	3,95
<b>Draft (m)</b>	1,20
<b>Headroom (m)</b>	1,98
<b>Year built</b>	1989
<b>Builder</b>	Fairline
<b>Country</b>	United Kingdom
<b>Designer</b>	Bernard Olesinki
<b>Displacement (t)</b>	13,5
<b>CE norm</b>	NA
<b>Hull material</b>	GRP
<b>Hull colour</b>	white
<b>Hull shape</b>	Fast Displacement Hull
<b>Superstructure material</b>	GRP
<b>Rubbing strake</b>	stainless steel
<b>Deck material</b>	GRP
<b>Deck finish</b>	paint
<b>Superstructure deck finish</b>	paint
<b>Cockpit deck finish</b>	paint
<b>Antifouling (year)</b>	2024 (layers & epoxy shield)
<b>Window frame</b>	aluminium
<b>Window material</b>	tempered glass
<b>Deckhatch</b>	yes
<b>Portholes</b>	stainless steel
<b>Flybridge</b>	yes
<b>Flybridge cover</b>	New Hardtop (2024)
<b>Fuel tank (litre)</b>	polyethylene 1000 (full)
<b>Fuel tank 2 (litre)</b>	1000 (full)



# FAIRLINE 50

Level indicator (fuel tank)	Gauge
Freshwater tank (litre)	polyethylene 1000 (full)
Level indicator (freshwater)	yes
Wheel steering	hydraulic
Inside helm position	yes
Flybridge helm position	hydraulic
More info on paintwork	Complete new paint in 2024
Extra info	Osmosis preventive treatment in 2014

## ACCOMMODATION

Cabins	2
Berths	4
Interior	Wood
Layout	yes
Floor	carpet
Aft deck	yes
Saloon	yes
Headroom saloon (m)	1,98
Heating	diesel ducted hot air
Air-conditioning	reverse cycle airco
Sliding door to aft deck	yes
Galley	L-shape
Countertop	tiles
Sink	stainless steel Double
Cooker	electric
Extractor	yes
Microwave/oven combi	Cecotec Proclean 3150
Fridge	Galley & Saloon
Freezer	Compartment
Hot water system	220V + engine Boiler
Water pressure system	electrical



# FAIRLINE 50

Hot water tap	yes
Crockery	yes
Owners cabin	double bed Forward
Bed length (m)	2,00 x 1,60
Wardrobe	hanging and shelves
Toilet	en suite
Toilet system	electric
Wash basin	at the toilet
Shower	en suite
Guest cabin 1	twin single Midship
Bed length (m)	2,00
Wardrobe	hanging and shelves
Toilet	shared
Toilet system	manual Jabsco
Wash basin	at the toilet
Shower	shared

## MACHINERY

No of engines	2
Make	Volvo Penta
Type	TAMD61A
HP	600
kW	441.60
Fuel	diesel
Year installed	2025
Year of overhaul	Complete overhaul in 2024
Maximum speed (kn)	17
Cruising speed (kn)	9
Consumption (l/hr)	20
Engine hours	12
Engine cooling system	freshwater heat exchanger



# FAIRLINE 50

Drive	shaft
Shaft seal	New 2024
Engine controls	bowden cable
Gearbox	hydraulic
Exhaust	watercooled
Propeller type	fixed
Propeller blades	3
Propeller shaft material	stainless steel
Shaft lubrication	water
Manual bilge pump	yes
Electric bilge pump	yes
Electrical installation	New wiring in 2024
Generator	wet exhaust 7 kW output
Start battery	2 x 12V / AGM (2024)
Service battery	2 x 12V / 250Ah Gel (202\$)
Battery monitor	Gauges
Battery charger	Victron (2024)
Battery charger/inverter	SMA
Solar panel	450W (2024)
Diode battery combiners	yes
Shorepower	with cable 230V
Trimtabs	yes

## NAVIGATION

Compass	Plastimo (2024)
Electric compass	yes
Depth sounder/log	Simrad (2024)
VHF	Icom IC-M330 (2024)
Autopilot	Simrad
Radar/GPS/plotter	Simrad (2024)
Electronic chart(s)	yes



AIS transceiver	Simrad (2024)
Navigation lights	LED (2024)

## EQUIPMENT

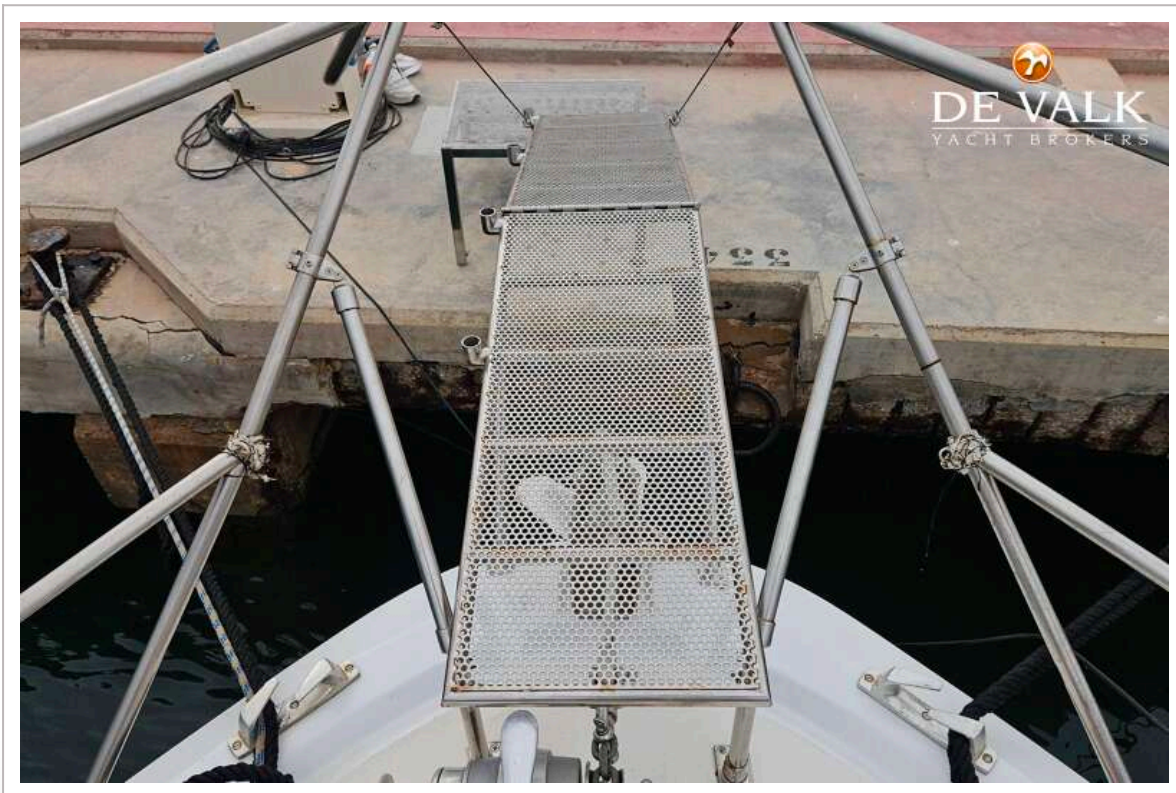
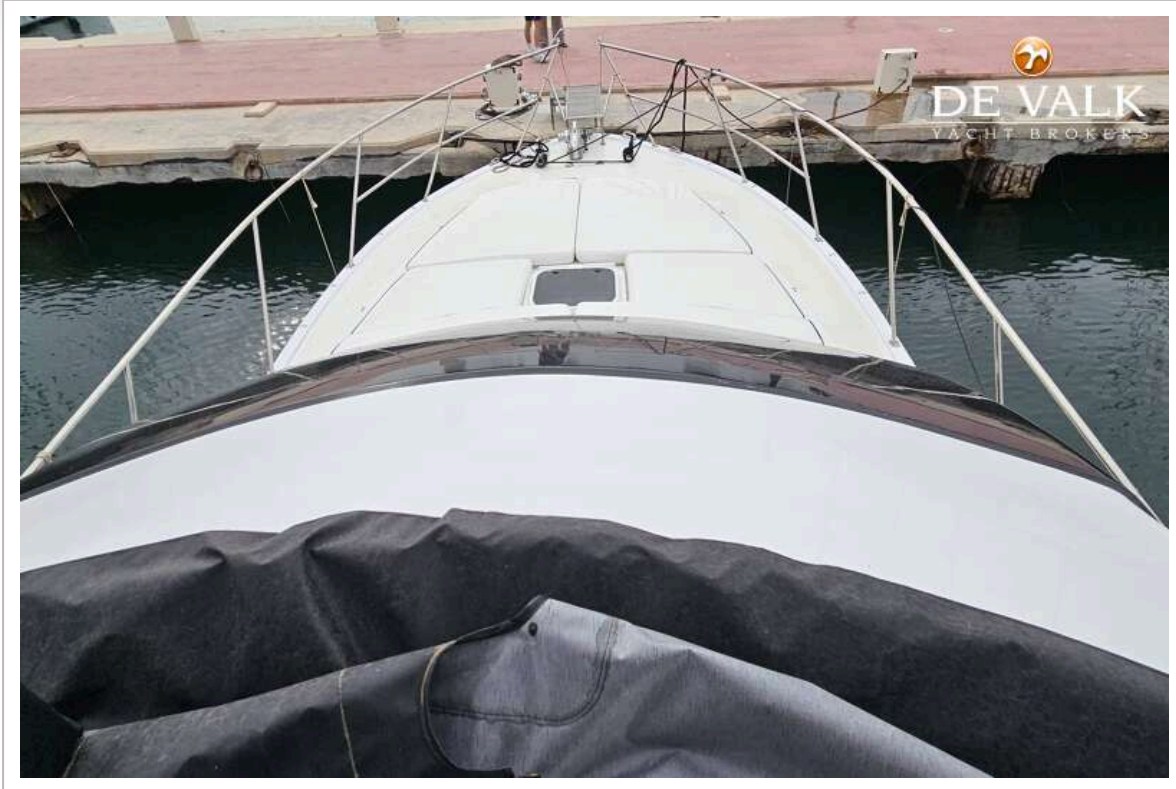
Fixed hardtop	New 2024
Cockpit cover	For instruments
Winter cover	Cockpit enclosure (2025)
Cockpit cushions	New 2024
Bathing platform	Extended
Boarding ladder	stainless steel
Transom door	yes
Gangway	In SS
Deck shower	yes
Anchor	CQR Plough
Anchor chain	120 m (10mm) galvanized
Windlass	electrical Lofrans Tigres
Davits	steel New 2024
Davits controls	electrical
Sea railing	stainless steel
Grab rail (superstructure)	stainless steel
Pulpit	yes
Clearview window	yes
Fenders	yes
Mooring lines	yes
Alarm system	Camera
TV	In cabins
Radio	Pioneer
Cockpit speakers	yes
Speakers in salon	Pioneer
Fire extinguisher	yes



# FAIRLINE 50



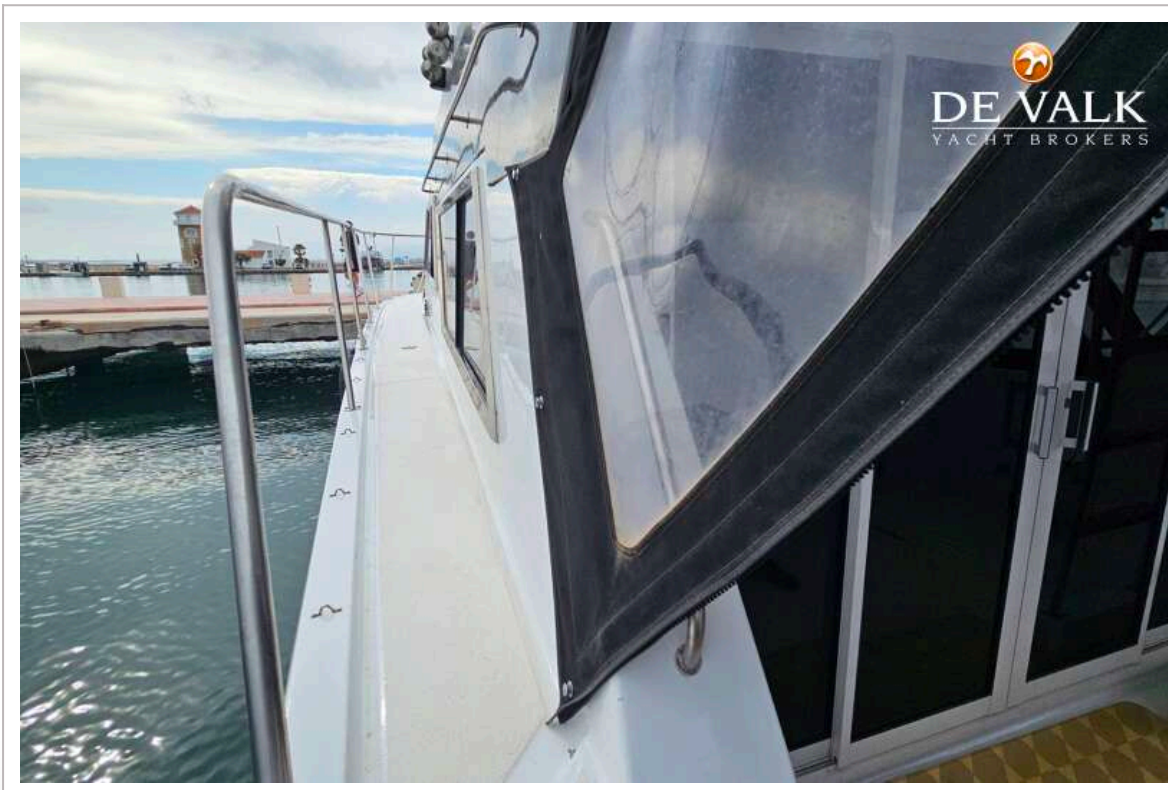
# FAIRLINE 50



# FAIRLINE 50



# FAIRLINE 50



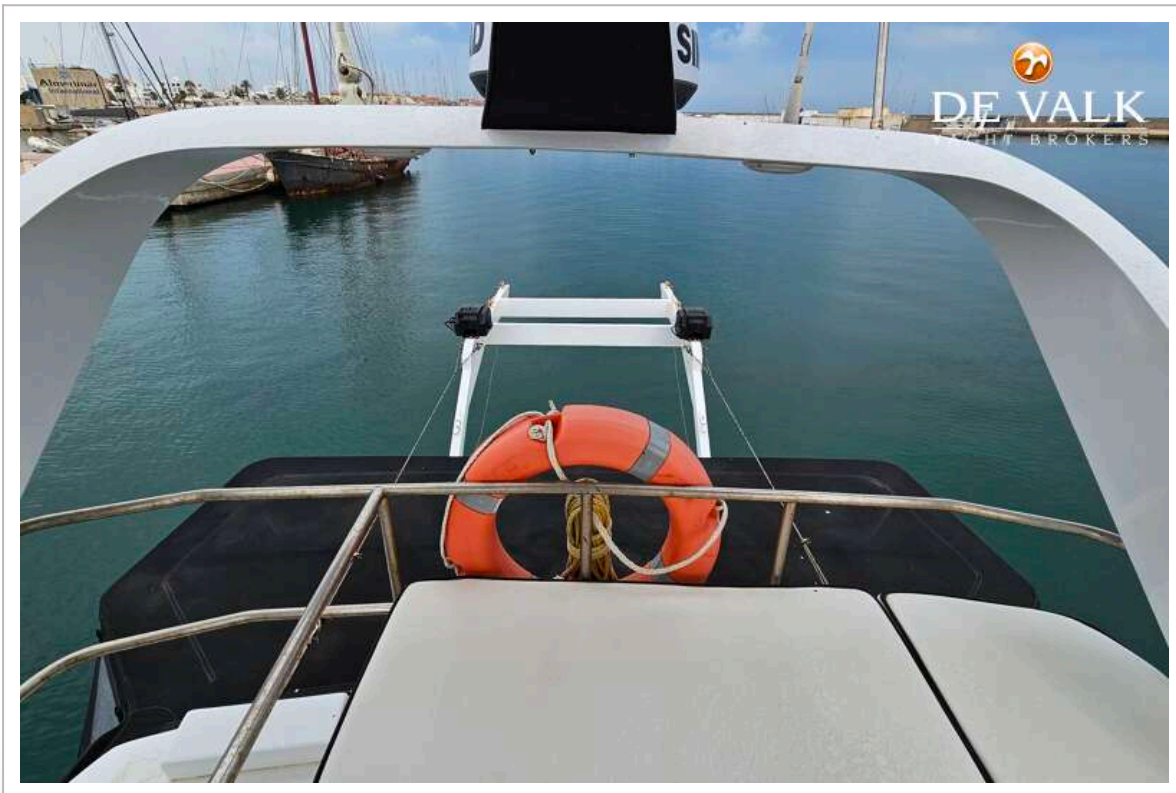
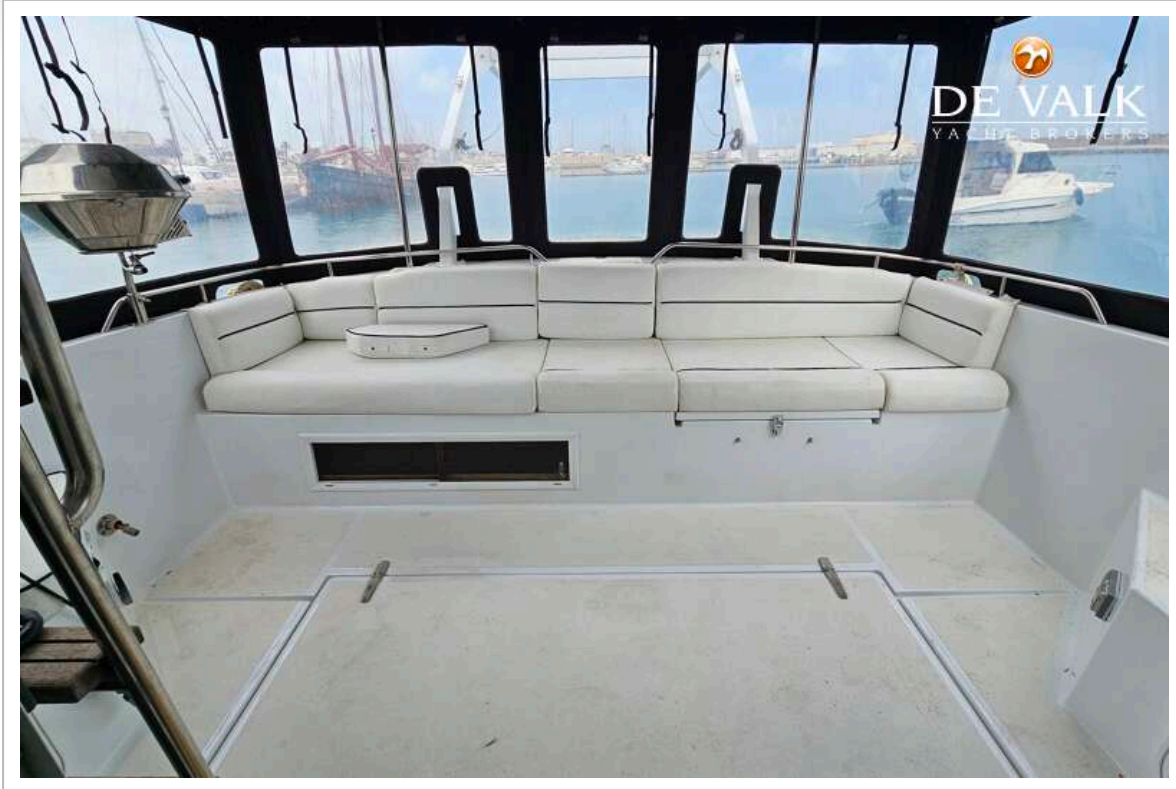
# FAIRLINE 50



# FAIRLINE 50



# FAIRLINE 50



# FAIRLINE 50



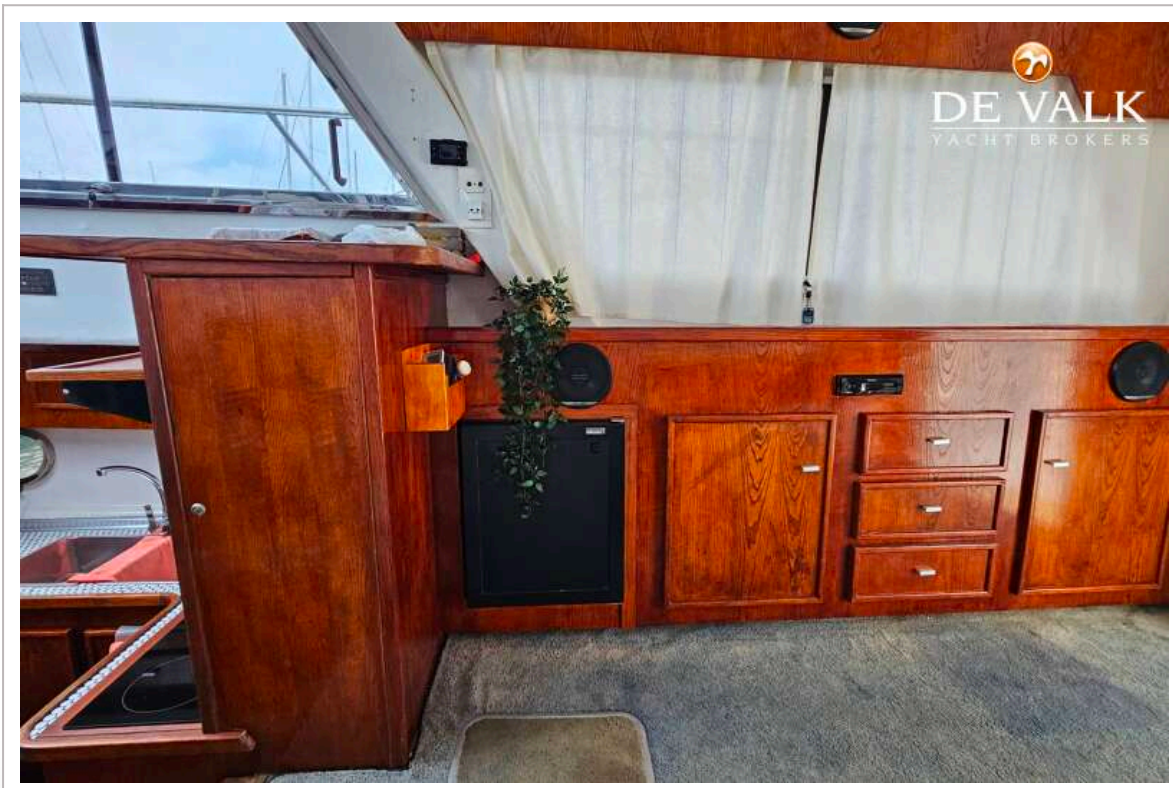
# FAIRLINE 50



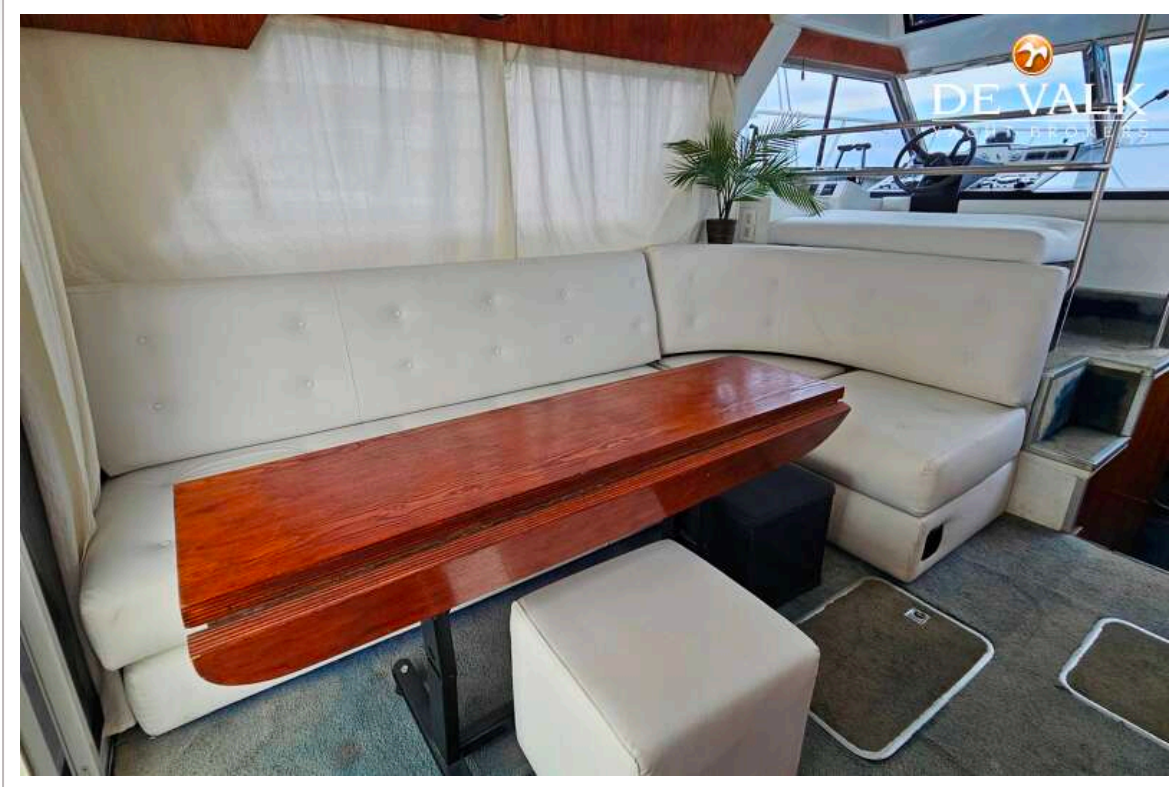
# FAIRLINE 50



# FAIRLINE 50

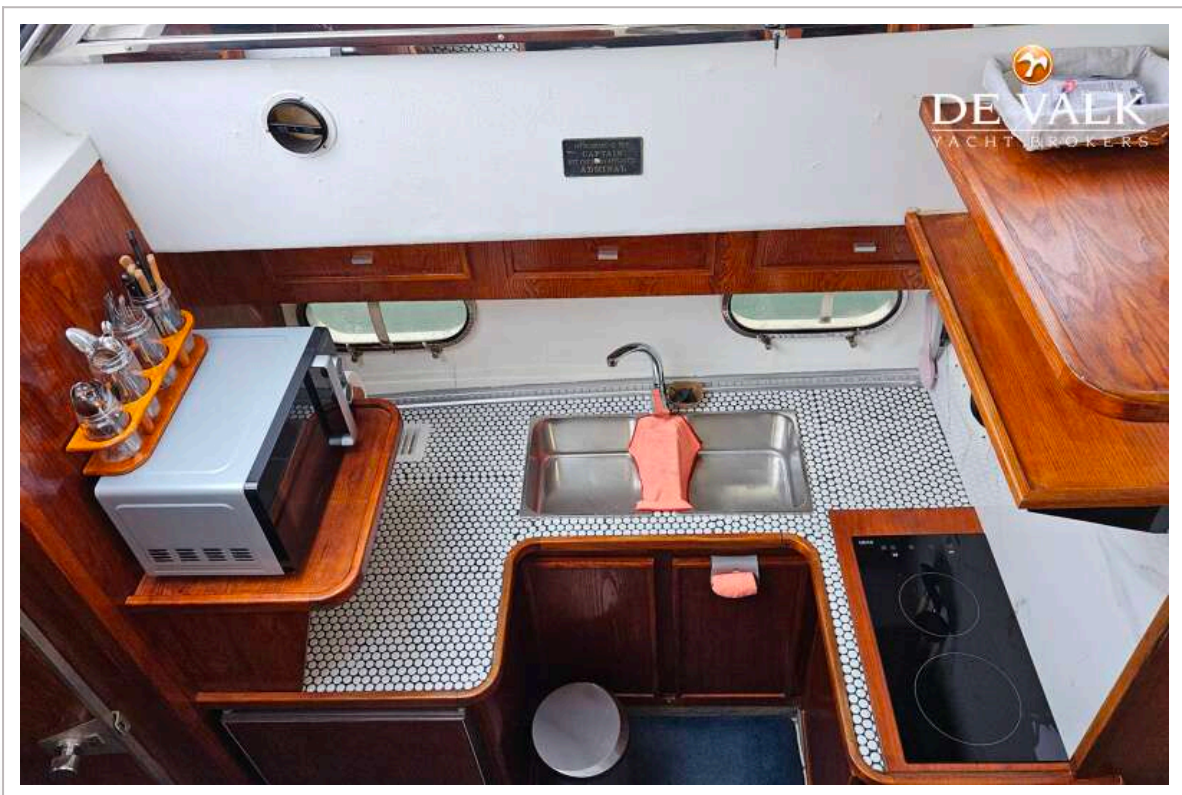


# FAIRLINE 50



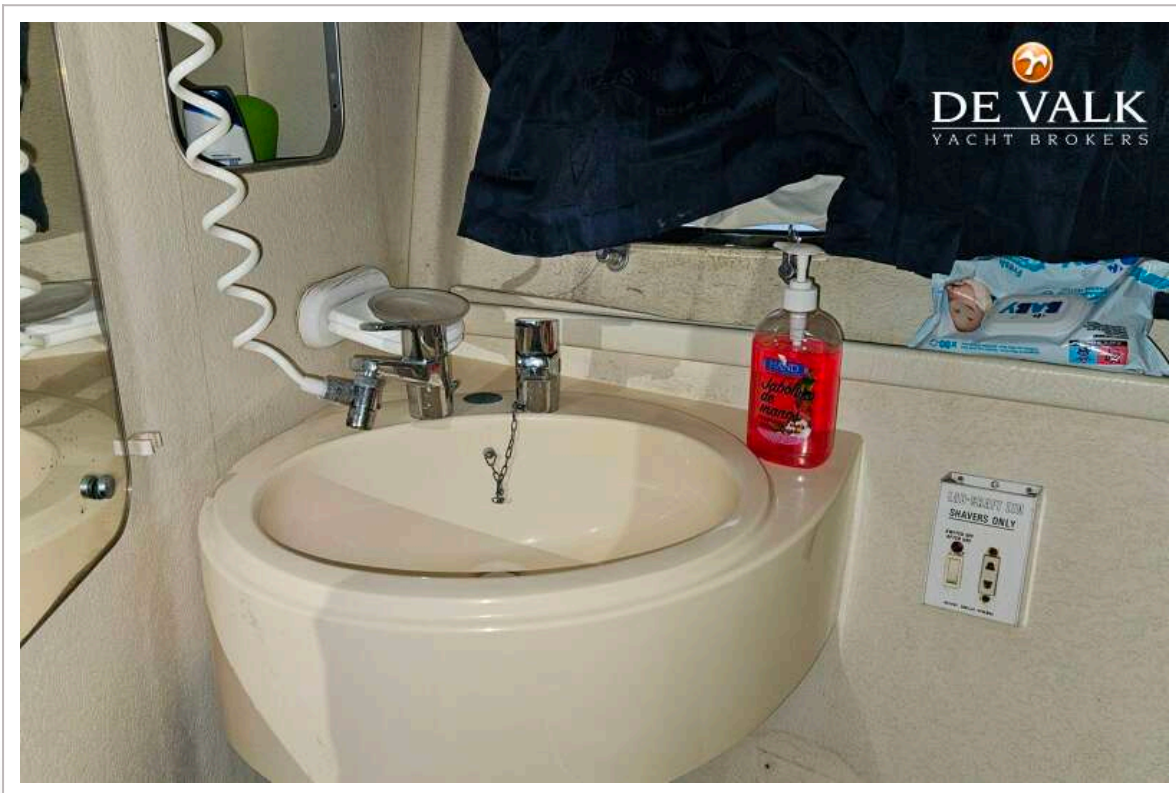
# FAIRLINE 50





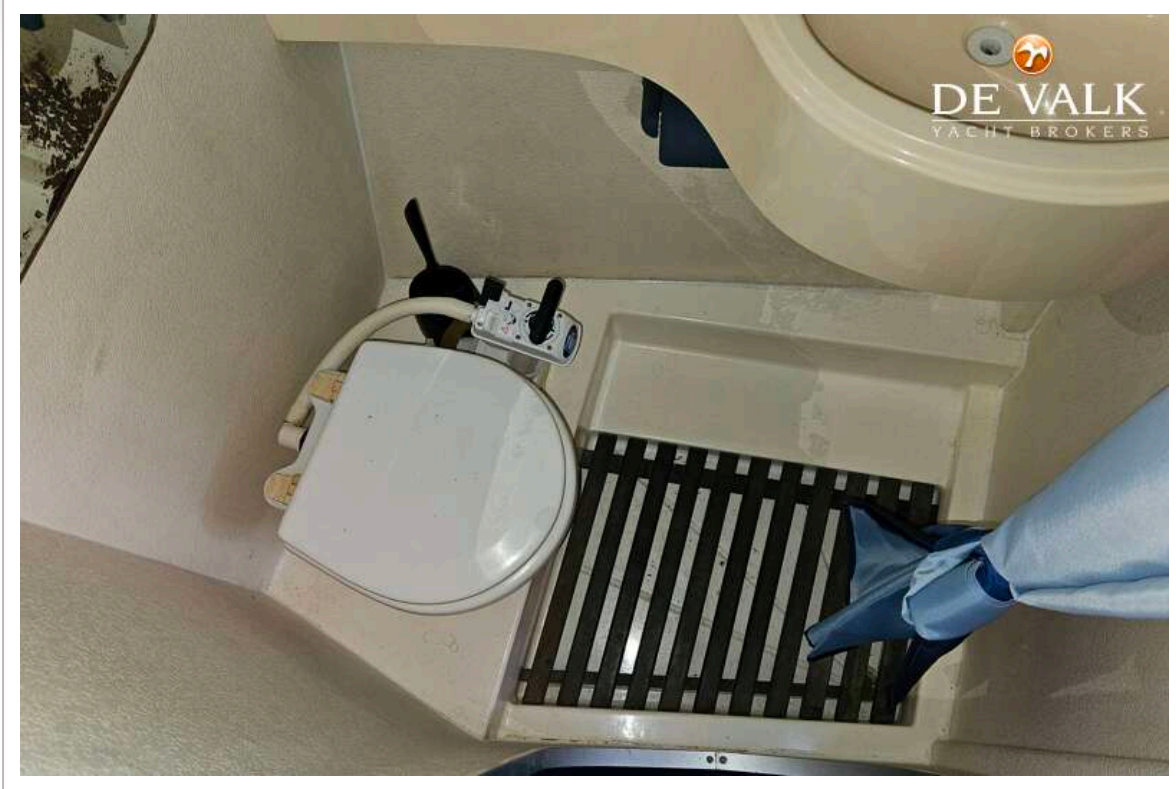
# FAIRLINE 50





# FAIRLINE 50





# FAIRLINE 50

