



RAPSODY R32 CLASSIC

RAPSODY R32 CLASSIC

BROKER'S COMMENTS

Rapsody R-32, built by Rapsody Yachts. The R-32 is characterised by a beautiful cream-coloured hull with a stunning varnished superstructure. Beautifully finished mahogany interior with two berths and bathroom. The beautifully finished large open cockpit offers space for the helm station with wooden helm seat and bench. Furthermore, the cockpit provides space for 2 benches and a cockpit table. The whole is enclosed by a cockpit canopy. The yacht is equipped with hot air heating, electric toilet and electric bow thruster. The vessel can be viewed at our sales marina in Loosdrecht!

Hielke Peters

SPECIFICATIONS

Dimensions	9.68 x 2.95 x 0.55 (m)	Builder	Rapsody
Built	2005	Cabins	1
Material	GRP	Berths	2
Engine(s)	1 x Volkswagen TD5-150 diesel	Hp/Kw	150.00 (hp), 110.40 (kw)
Asking price	€ 159.000 (VAT Paid)	Lying	at sales office

CONTACT

Sales office	De Valk Loosdrecht B.V.	Telephone	+31 (0)35 582 90 30
Address	't Breukeleveense Meentje 6 1231LM Loosdrecht / Wijdmeren NL	E-mail	loosdrecht@devalk.nl

DISCLAIMER

These particulars are given in good faith as supplied but cannot be guaranteed.



RAPSODY R32 CLASSIC

GENERAL

Model	RAPSODY R32 CLASSIC
Type	motor yacht
LOA (m)	9,68
Beam (m)	2,95
Draft (m)	0,55
Year built	2005
Builder	Rapsody
Country	The Netherlands
CE norm	B
Hull material	GRP
Hull colour	white
Hull shape	deep-V
Superstructure material	wood
Rubbing strake	stainless steel
Deck material	GRP
Deck finish	teak
Superstructure deck finish	teak
Cockpit deck finish	teak
Antifouling (year)	2025
Window frame	wood
Window material	glass
Deckhatch	yes
Portholes	stainless steel
Mast can be lowered	manual
Fuel tank (litre)	stainless steel 120
Fuel tank 2 (litre)	stainless steel 120
Level indicator (fuel tank)	VDO
Freshwater tank (litre)	yes
Level indicator (freshwater)	VDO
Wheel steering	hydraulic



RAPSODY R32 CLASSIC

Outside helm position	hydraulic
More info on paintwork	Exterior wooden paintwork completed in 2025

ACCOMMODATION

Cabins	1
Berths	2
Interior	teak
Layout	yes
Floor	teak
Open cockpit	yes
Aft deck	yes
Deck saloon	yes
Heating	diesel ducted hot air Webasto
Opening door to cockpit	yes
Galley	yes
Countertop	plastic
Sink	stainless steel
Cooker	methylated spirit 2 burners
Fridge	Vitrifrigo
Hot water system	220V + engine
Water pressure system	electrical
Owners cabin	v-bed
Bathroom	shared
Toilet	shared
Toilet system	electric
Wash basin	in the bathroom
Shower	shared

MACHINERY

No of engines	1
Make	Volkswagen



RAPSODY R32 CLASSIC

Type	TD5-150
HP	150
kW	110.40
Fuel	diesel
Engine hours	450
Engine cooling system	freshwater heat exchanger
Drive	shaft
Shaft seal	Renewed in 2025
Engine controls	bowden cable
Gearbox	hydraulic
Bowthruster	electric
Exhaust	watercooled
Propeller type	fixed
Propeller shaft material	steel
Shaft lubrication	water
Electric bilge pump	3X
Bilge alarm	yes
Electrical installation	12V / 230V
Batteries	2X Agm 160 Ah 2025
Battery monitor	Philippi
Battery charger/inverter	Victron phoenix 12V/2000W/80A
Shorepower	with cable
Extra info	Engine service and Timing belt 2025

NAVIGATION

Compass	Ritchie
Depth sounder/log	Raymarine ST40
VHF	Simrad RS87
Autopilot	Simrad with remote control
Rudder angle indicator	yes
GPS	yes



RAPSODY R32 CLASSIC



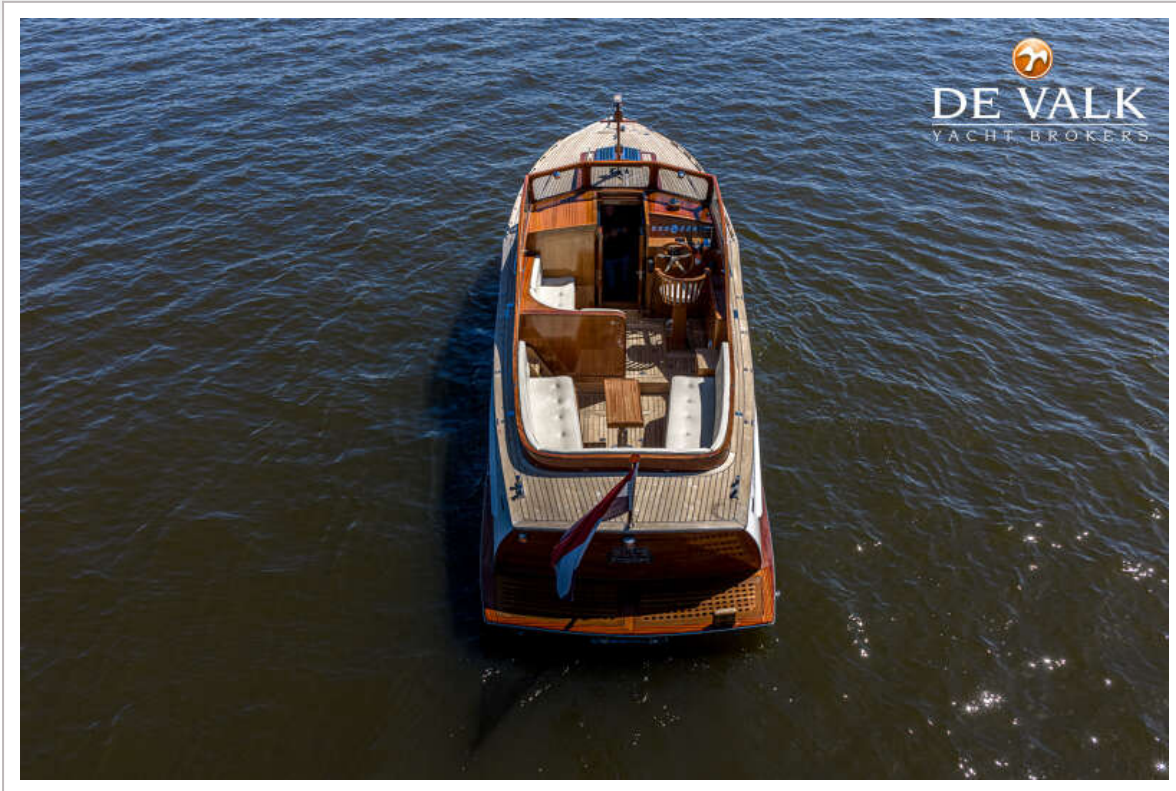
RAPSODY R32 CLASSIC



RAPSODY R32 CLASSIC



RAPSDODY R32 CLASSIC



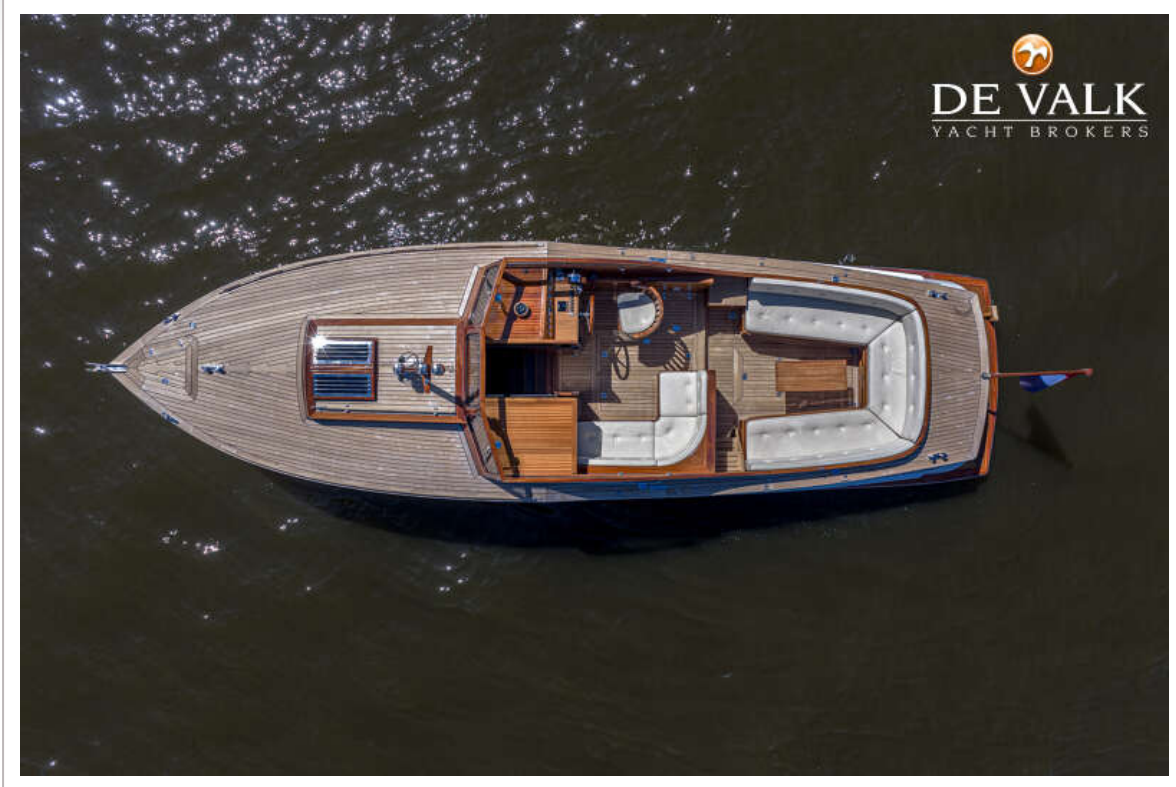
RAPSODY R32 CLASSIC



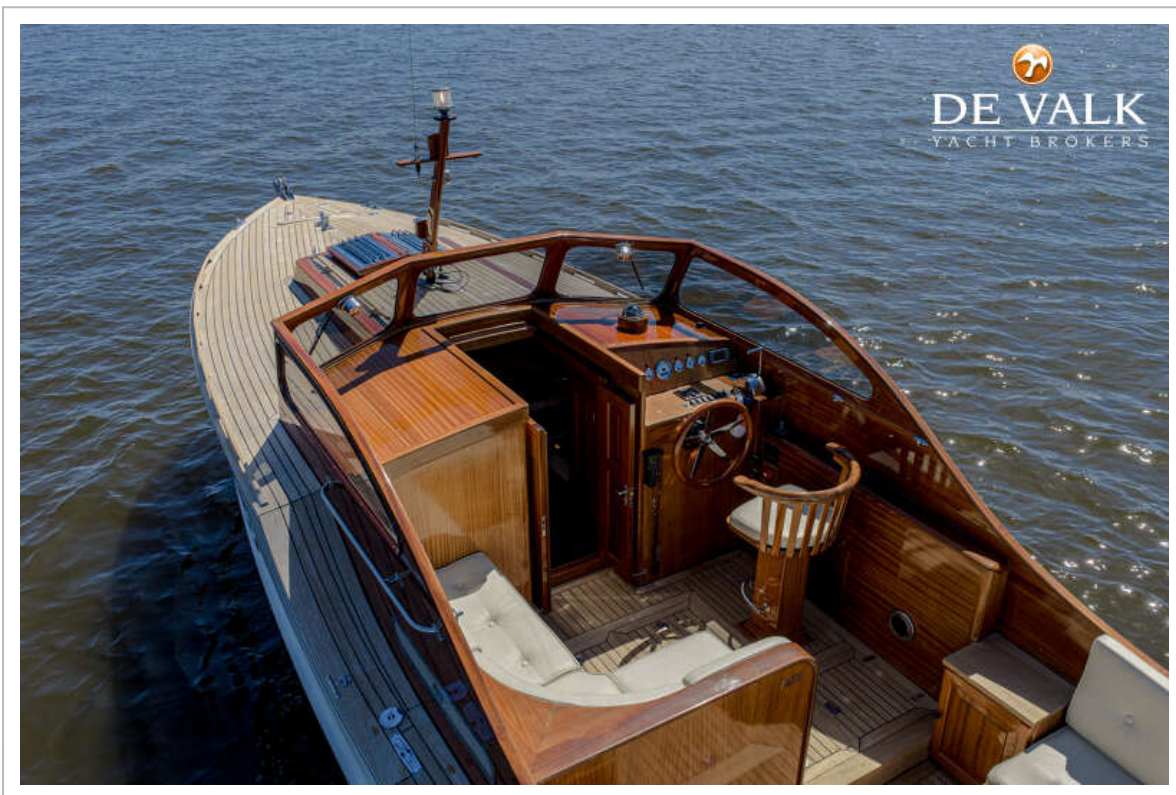
RAPSODY R32 CLASSIC



RAPSODY R32 CLASSIC



RAPSODY R32 CLASSIC



RAPSODY R32 CLASSIC



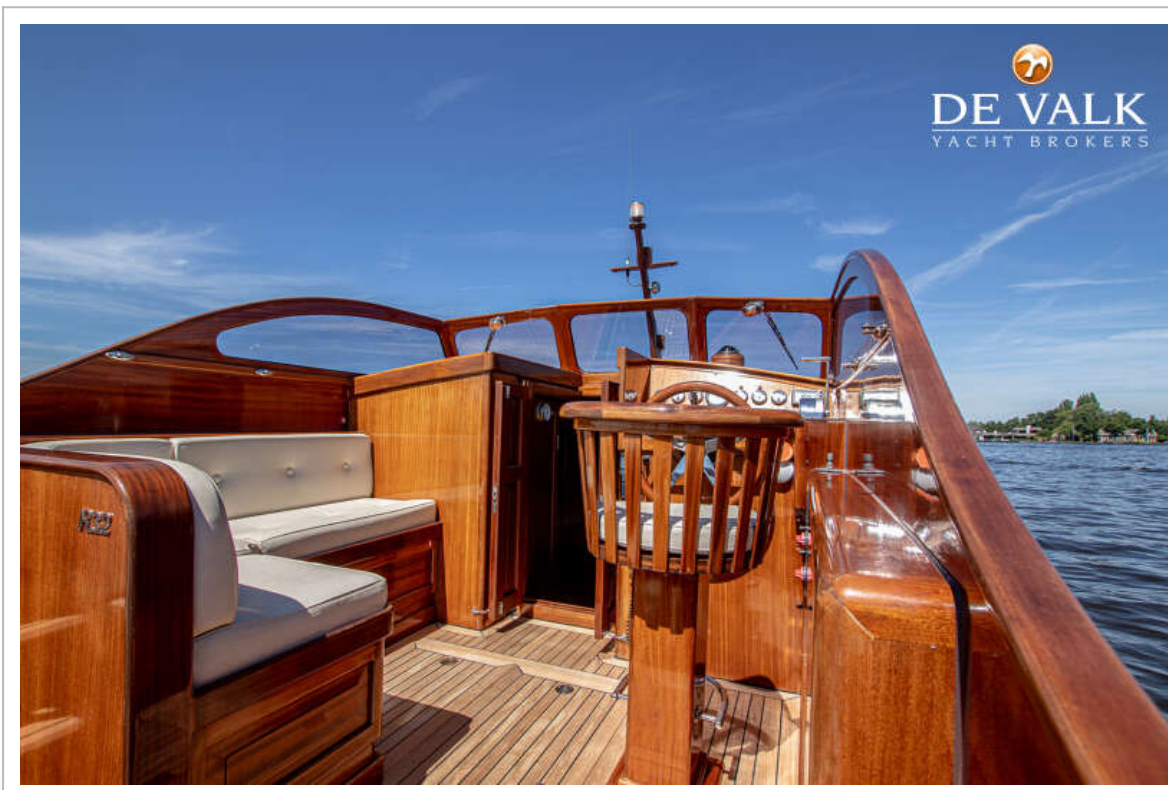
RAPSODY R32 CLASSIC



RAPSODY R32 CLASSIC



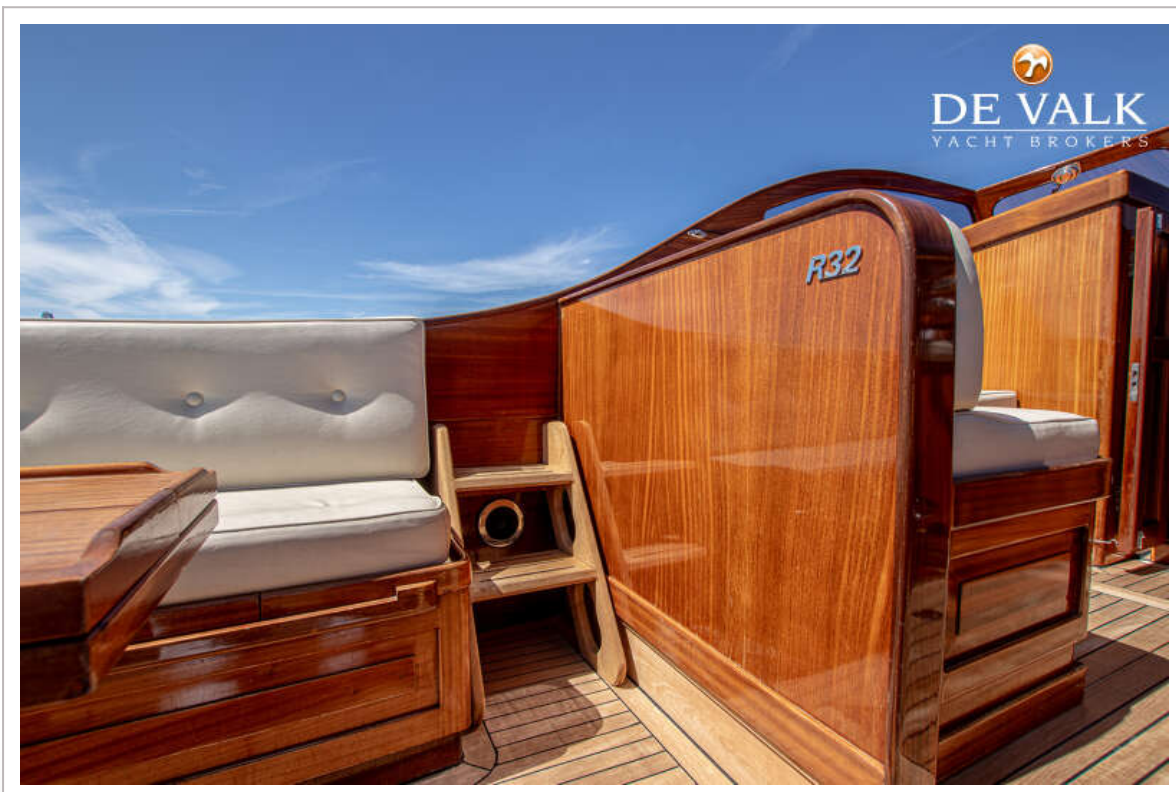
RAPSDODY R32 CLASSIC



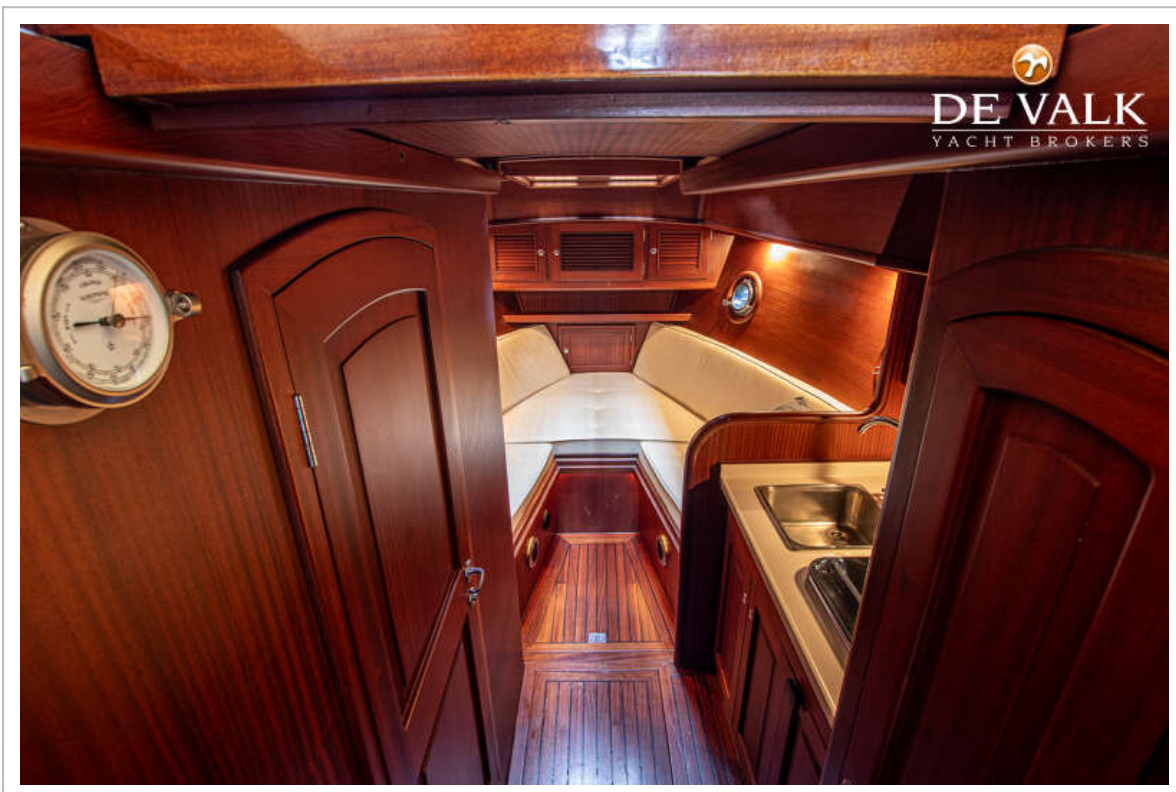
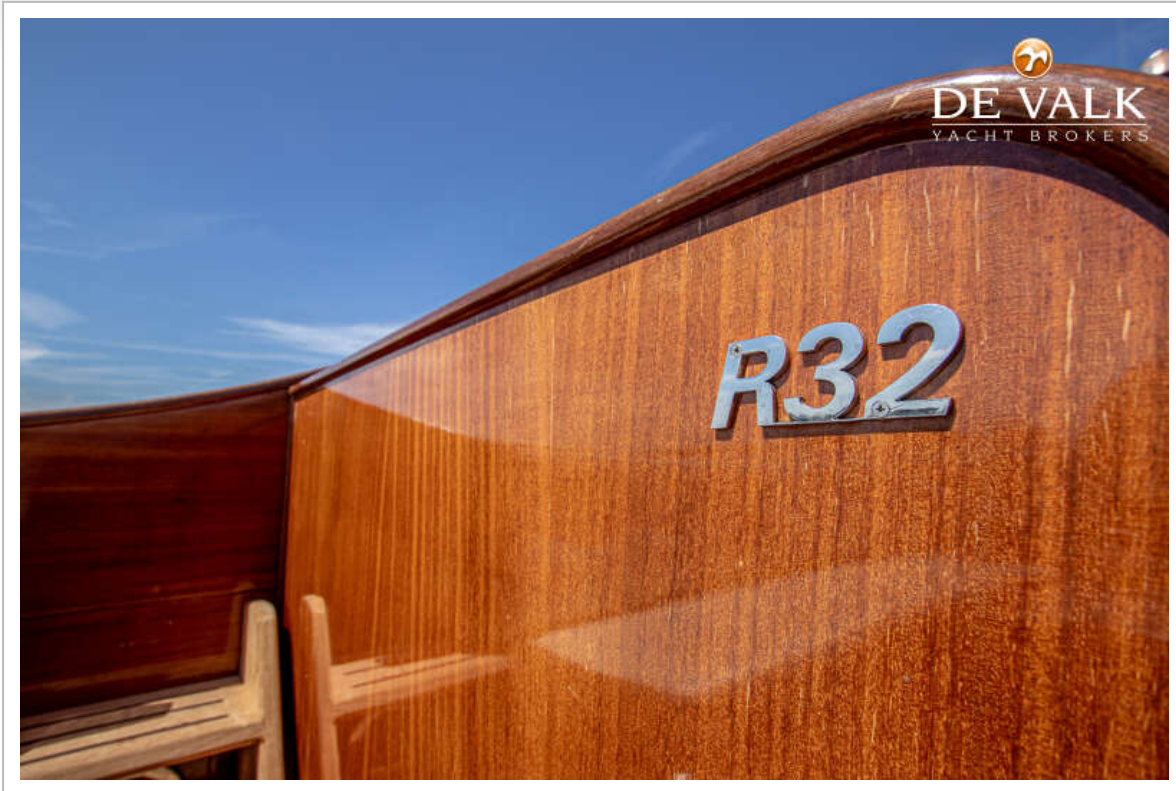
RAPSODY R32 CLASSIC



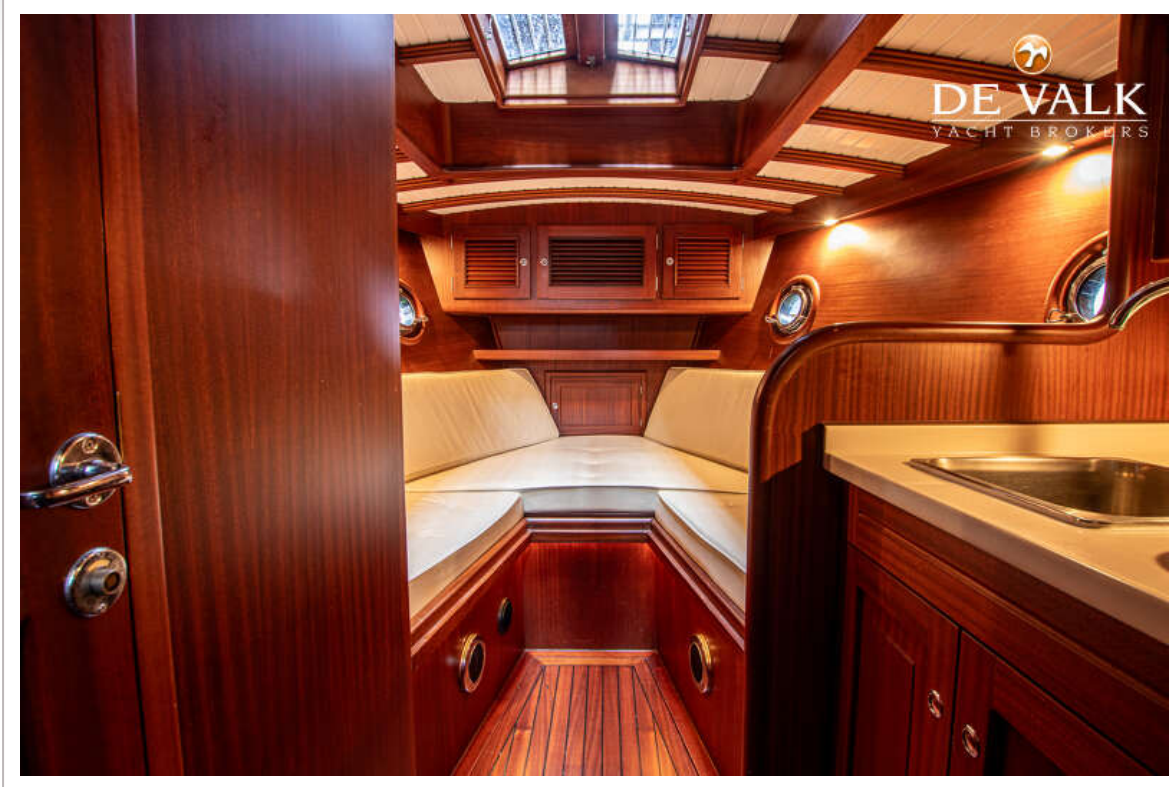
RAPSODY R32 CLASSIC



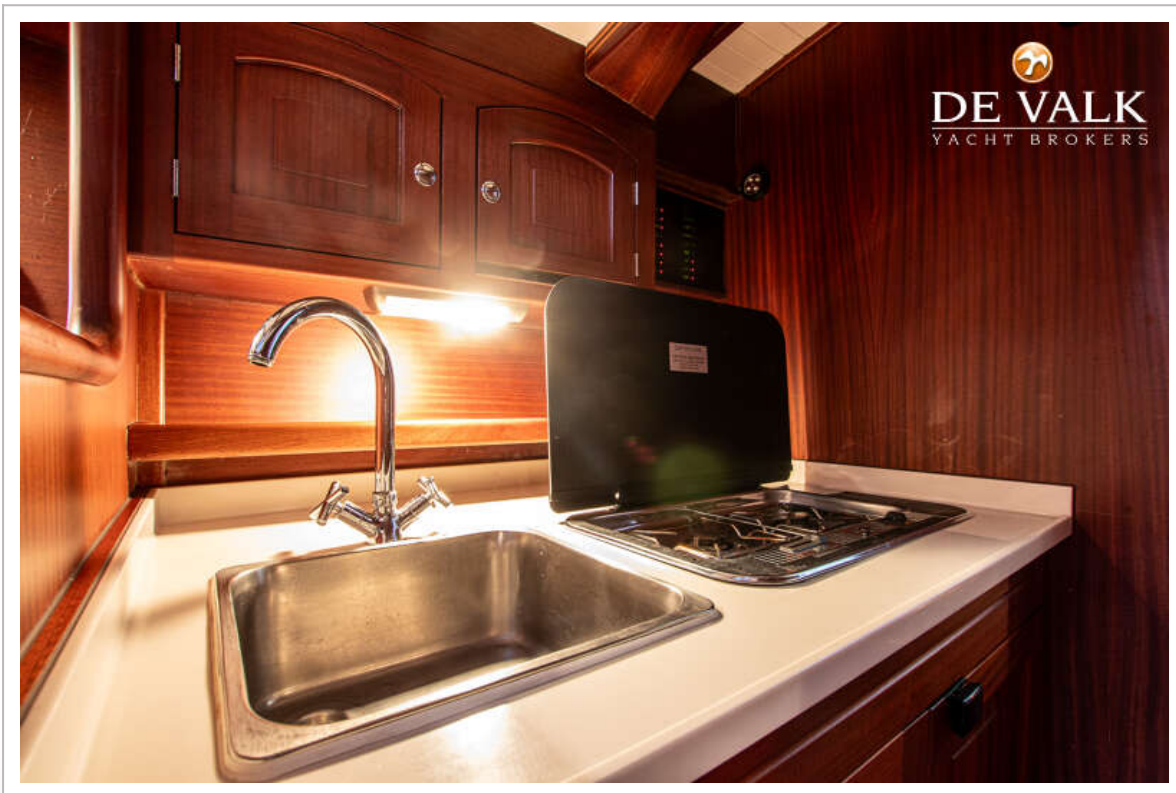
RAPSODY R32 CLASSIC



RAPSODY R32 CLASSIC



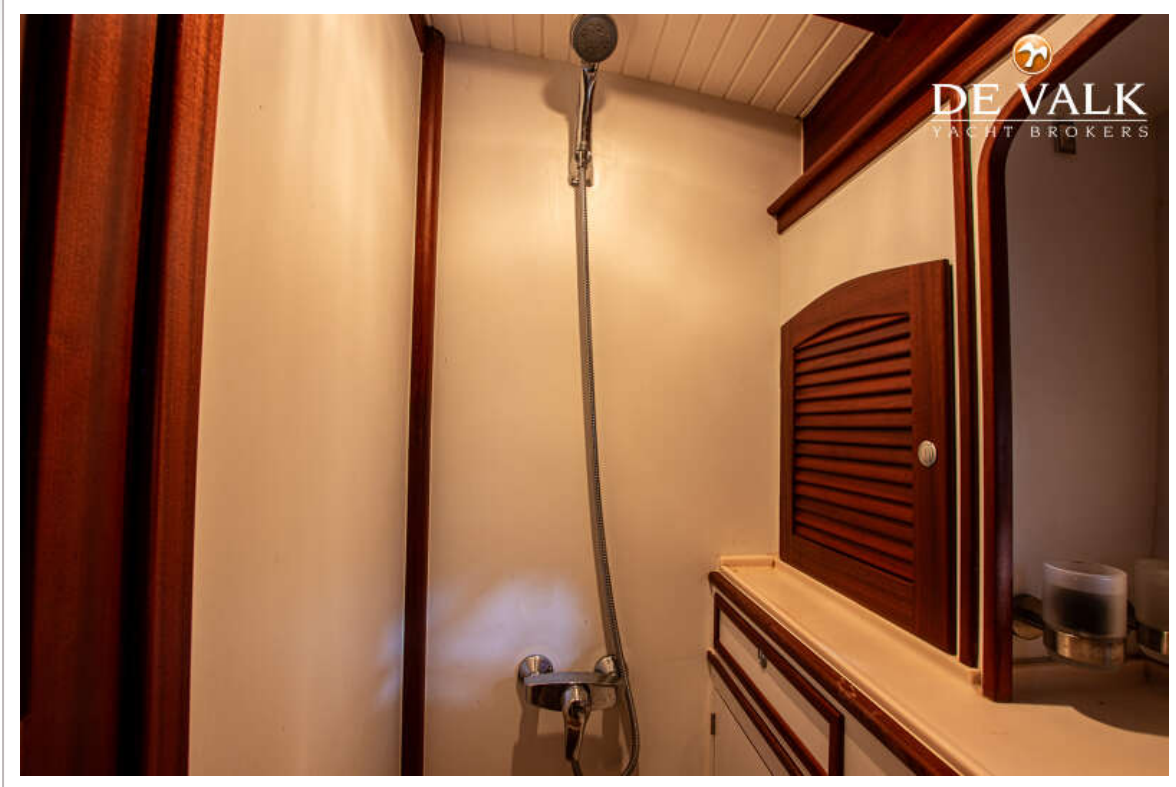
RAPSODY R32 CLASSIC



RAPSODY R32 CLASSIC



RAPSODY R32 CLASSIC



RAPSODY R32 CLASSIC

