



DE VALK
YACHT BROKERS



JEANNEAU PRESTIGE 460



DE VALK
YACHT BROKERS

JEANNEAU PRESTIGE 460

BROKER'S COMMENTS

This Prestige 460 from 2018 is presented in excellent condition with low engine hours. This Prestige 460 comes fully equipped with high-end options including a Schenker watermaker, Tropical air conditioning, and a Bose sound system installed throughout the cockpit, all cabins, and the flybridge. She also features marine monitoring system with battery voltage tracking via mobile app. A large sun protection screen covers the aft deck and bathing platform, improving comfort at anchor. This is a well-maintained yacht offering a perfect balance of performance, comfort, and luxury.

Raoul van der Werf

SPECIFICATIONS

Dimensions	14.30 x 4.25 x 1.21 (m)	Builder	Jeanneau
Built	2018	Cabins	2
Material	GRP	Berths	
Engine(s)	2 x VOLVO PENTA D6-435 diesel	Hp/Kw	2 x 435.00 (hp), 320.16 (kw)
Asking price	€ 590.000 (VAT Paid)	Lying	contact Antibes

CONTACT

Sales office	De Valk Antibes	Telephone	+33 492 91 0202
Address	2, Avenue de Verdun 06600 Antibes FR	E-mail	antibes@devalk.nl

DISCLAIMER

These particulars are given in good faith as supplied but cannot be guaranteed.



JEANNEAU PRESTIGE 460

GENERAL

Model	JEANNEAU PRESTIGE 460
Type	motor yacht
LOA (m)	14,30
LWL (m)	12,45
Beam (m)	4,25
Draft (m)	1,21
Year built	2018
Builder	Jeanneau
Designer	Garroni Design
Displacement (t)	12,6
CE norm	B
Hull material	GRP
Hull colour	white
Hull shape	deep-V
Superstructure material	GRP
Deck material	teak
Deck finish	teak
Antifouling (year)	05-2026
Flybridge	yes
Flybridge cover	yes
Flybridge cockpit cover	yes
Flybridge suncover	yes
Radar arch	non collapsible
Fuel tank (litre)	1240
Level indicator (fuel tank)	yes
Freshwater tank (litre)	580
Level indicator (freshwater)	yes
Blackwater tank (litre)	yes
Level indicator (blackwater)	yes
Greywater tank (litre)	yes



JEANNEAU PRESTIGE 460

Level indicator (greywater)	yes
Wheel steering	electric
Inside helm position	yes
Outside helm position	electric
Flybridge helm position	electric

ACCOMMODATION

Cabins	2
Crew cabin	yes
Crew berths	1
Layout	yes
Floor	carpet New
Saloon	yes
Air-conditioning	reverse cycle airco Tropical
Navigation center	yes
Dining room	yes
Sliding door to cockpit	yes
Galley	yes
Countertop	corian
Sink	stainless steel Additional tap with filter for drinking water
Cooker	yes
Oven	yes
Microwave	yes
Fridge	yes
Freezer	yes
Hot water system	yes
Water pressure system	yes
Dishwasher	yes
Ice maker	yes
Owners cabin	double bed
Bed length (m)	2m



JEANNEAU PRESTIGE 460

Wardrobe	drawers and shelves
Bathroom	en suite
Toilet	en suite
Toilet system	electric
Wash basin	yes
Shower	en suite
Guest cabin 1	twin single Convertable
Bed length (m)	2m
Wardrobe	drawers and shelves
Bathroom	separate
Toilet	separate
Toilet system	electric
Shower	separate
Crew cabin(s)	1
Bathroom (crew)	yes
Toilet (crew)	yes
Toilet system	electric
Shower (crew)	yes
Washing machine/dryer combi	yes

MACHINERY

No of engines	2
Make	VOLVO PENTA
Type	D6-435
HP	435
kW	320.16
Fuel	diesel
Maximum speed (kn)	32
Cruising speed (kn)	24
Engine hours	445
Drive	IPS



JEANNEAU PRESTIGE 460

Engine controls	Joystick
Bowthruster	electric
Manual bilge pump	yes
Electric bilge pump	yes
Bilge alarm	yes
Electrical installation	yes
Generator	ONAN 11kW
Batteries	Lithium
Start battery	yes
Service battery	yes
Navigation Battery	yes
Generator battery	yes
Bowthruster battery	yes
Windlass battery	yes
Battery charger	Sea Marine battery check with mobile app
Inverter	yes
Battery charger/inverter	yes
Shorepower	with cable
Watermaker	Schencker 100L/h
Trimtabs	yes

NAVIGATION

Compass	yes
Compass on flybridge	yes
Depth sounder	yes
VHF	yes
Autopilot	yes
Radar/GPS/plotter	yes
Wifi antenna	yes
Camera	yes
Navigation lights	yes



Searchlight yes

EQUIPMENT

Bimini	yes
Sun awning	yes
Cockpit cushions	yes
Cockpit table	yes
Bathing platform	yes
Boarding ladder	yes
Gangway	Opacmar
Deck shower	yes
Anchor	yes
Anchor chain	yes
Windlass	electrical
Windlass aft	electrical
Horn	yes
Fenders	yes
Mooring lines	yes
TV	2
Radio	yes
Surround Sound System	yes
Sub-woofer	yes
Cockpit speakers	Bose
Speakers in salon	Bose
Speakers in cabin	Bose



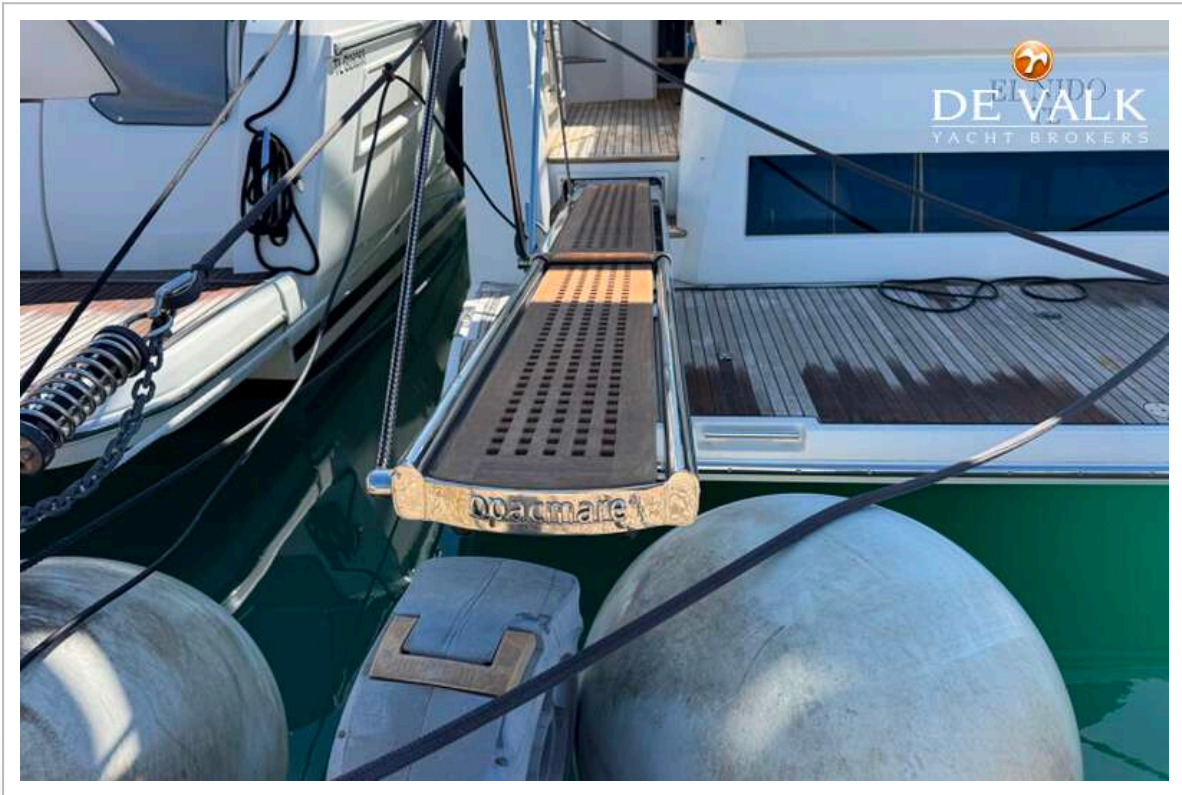
JEANNEAU PRESTIGE 460



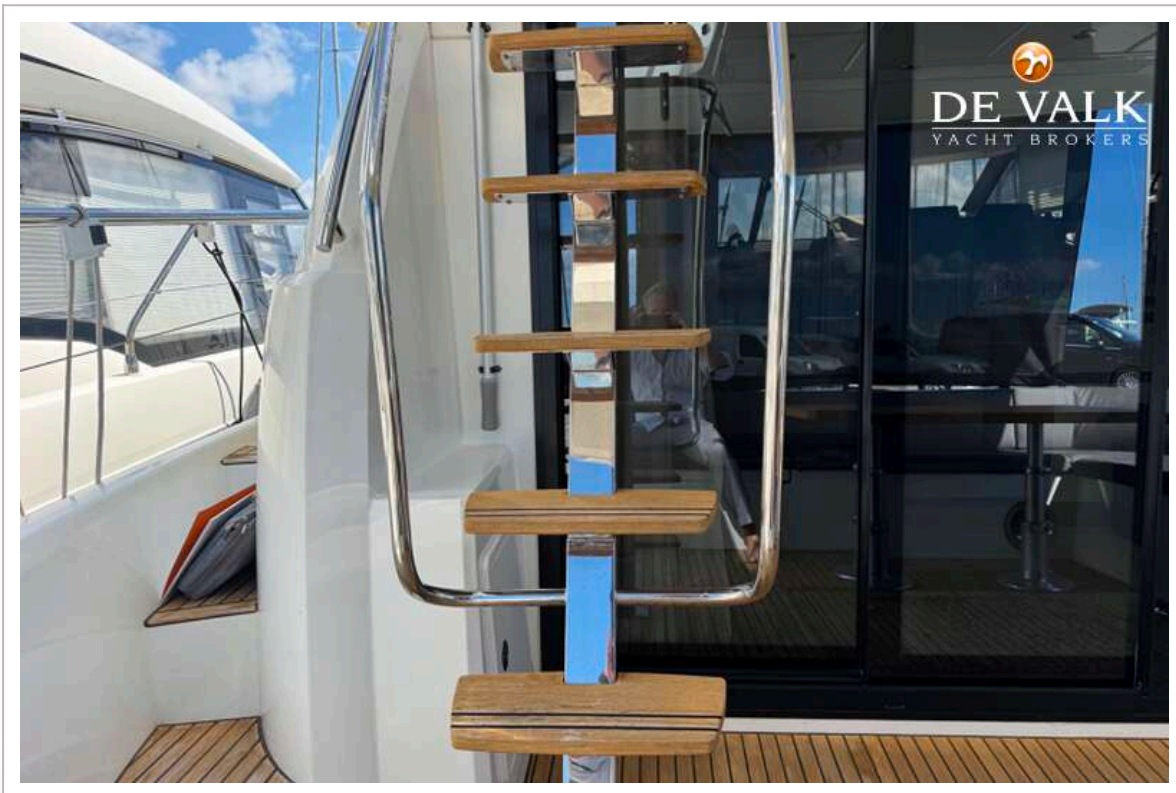
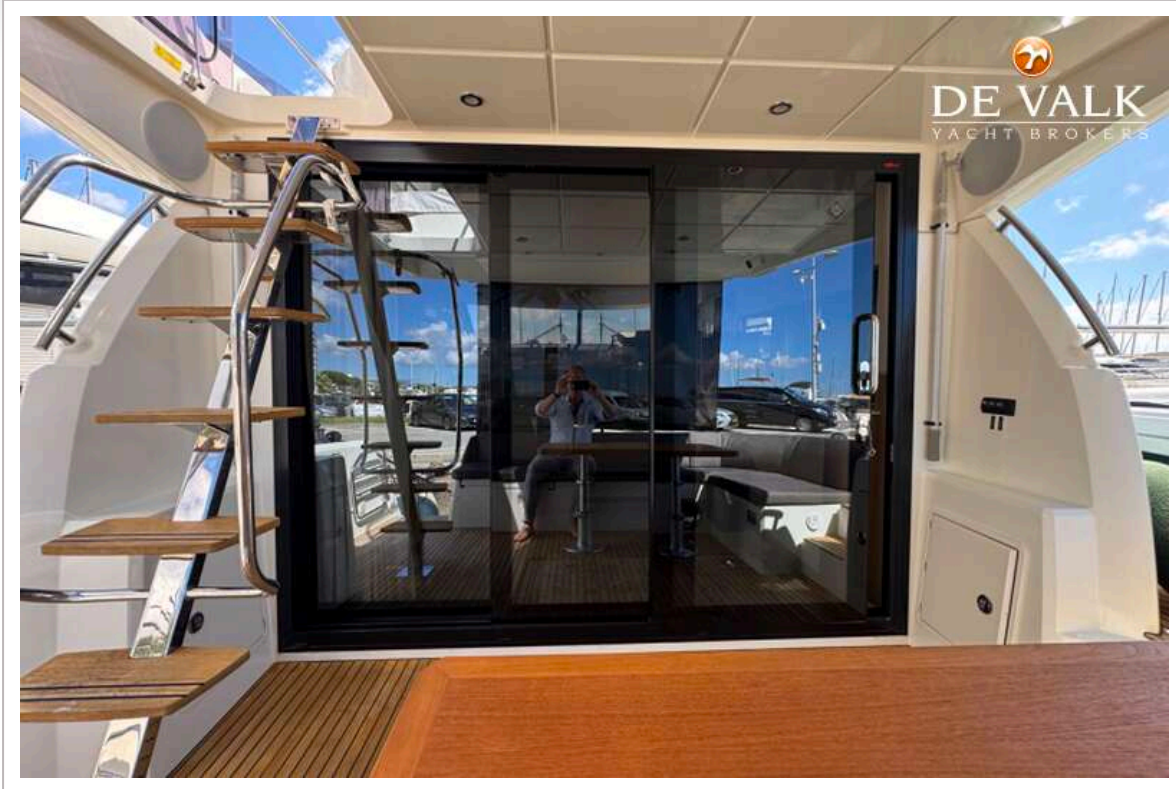
JEANNEAU PRESTIGE 460



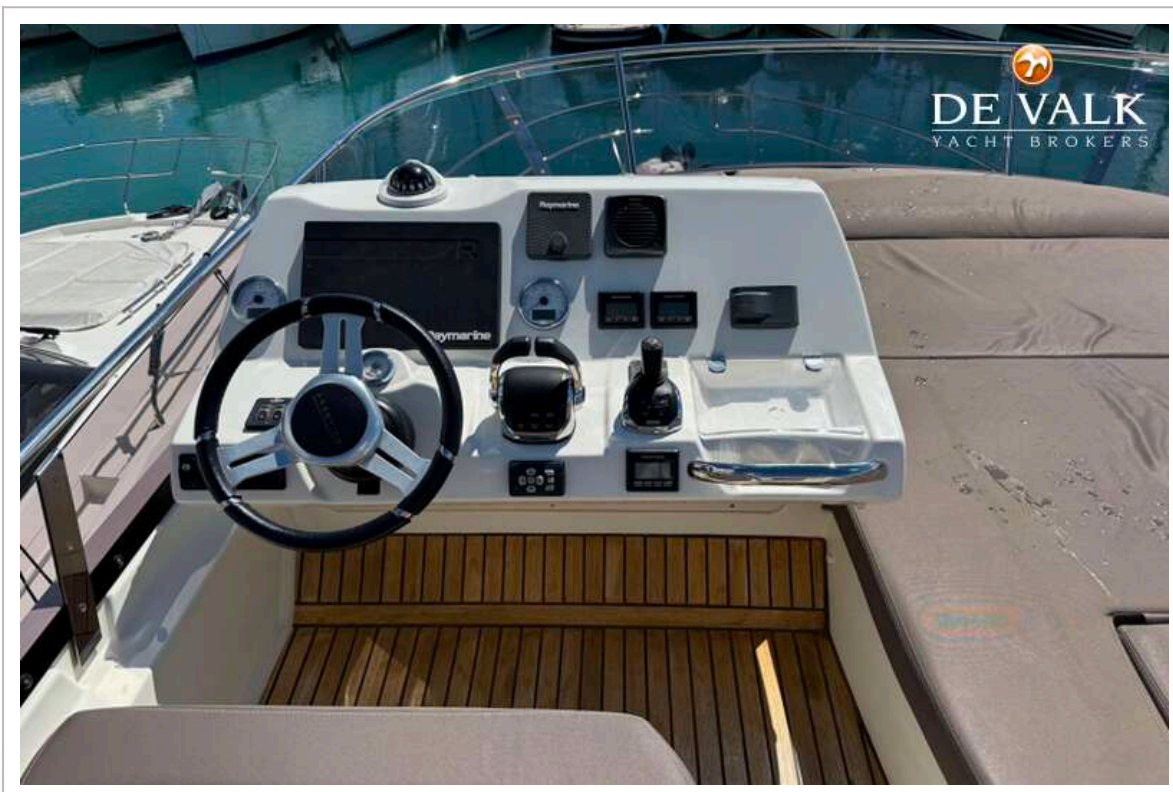
JEANNEAU PRESTIGE 460



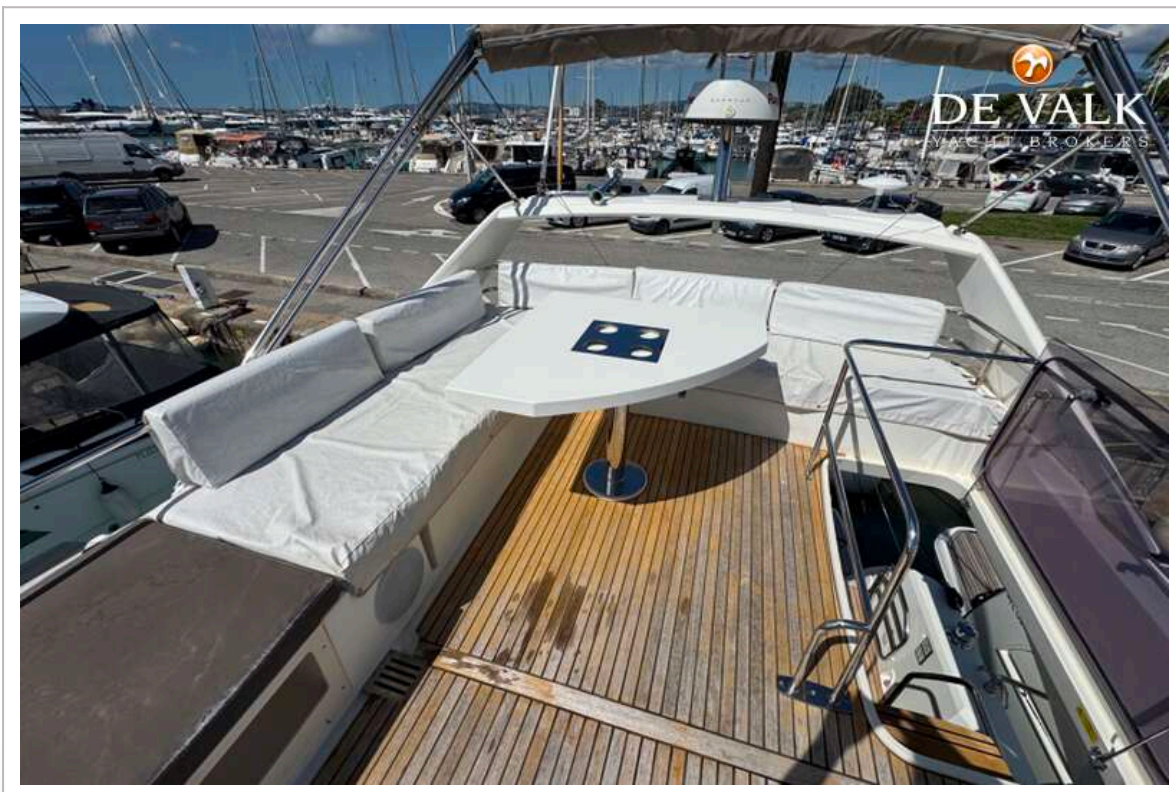
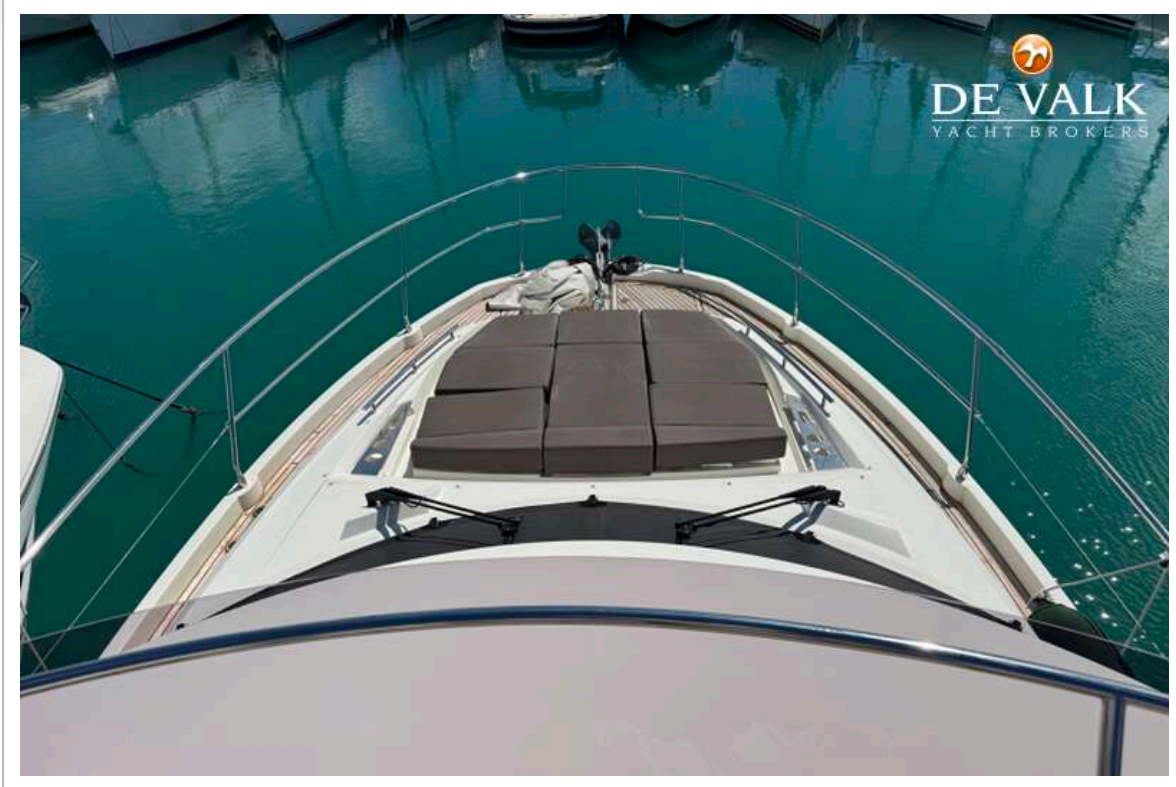
JEANNEAU PRESTIGE 460



JEANNEAU PRESTIGE 460



JEANNEAU PRESTIGE 460



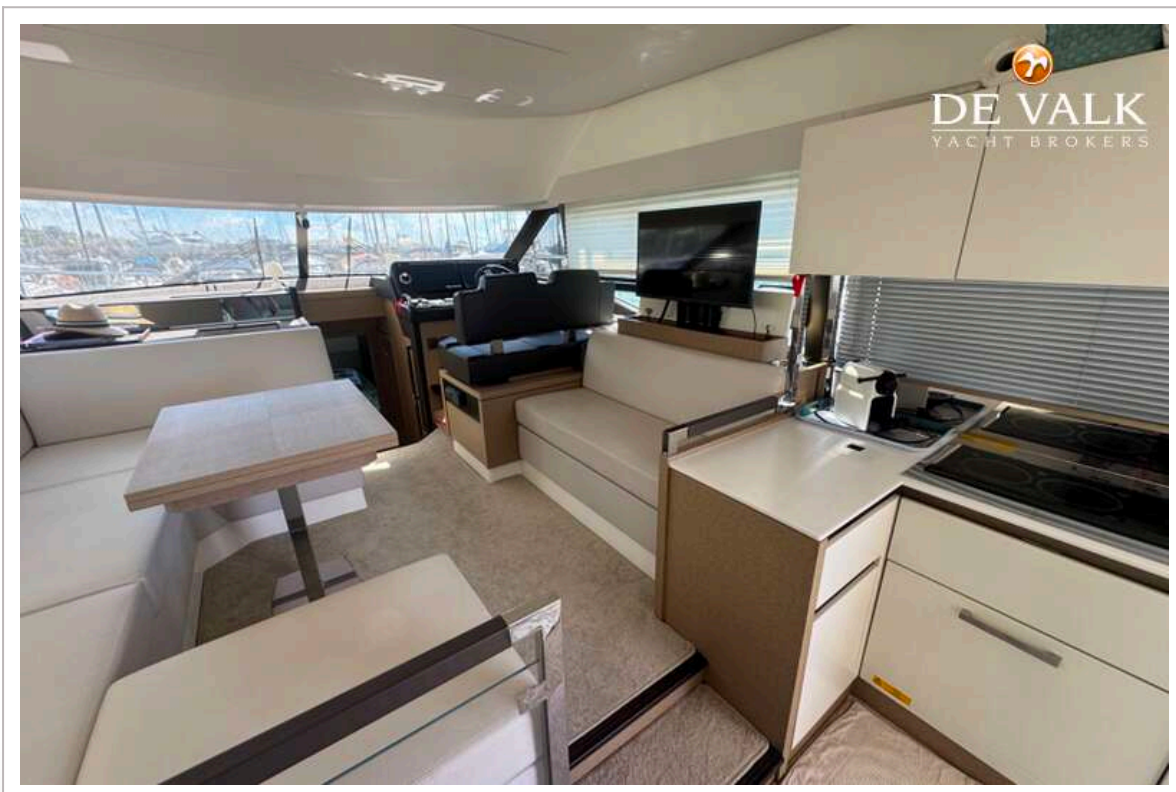
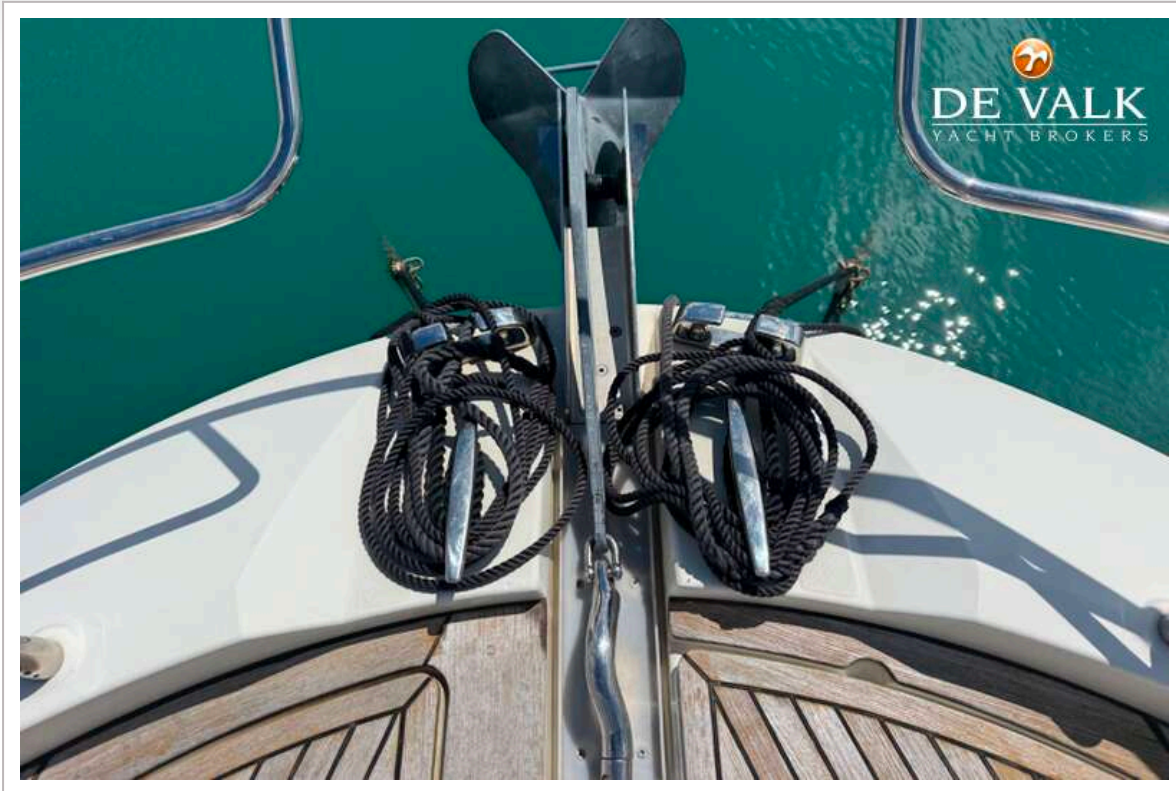
JEANNEAU PRESTIGE 460



JEANNEAU PRESTIGE 460



JEANNEAU PRESTIGE 460



JEANNEAU PRESTIGE 460



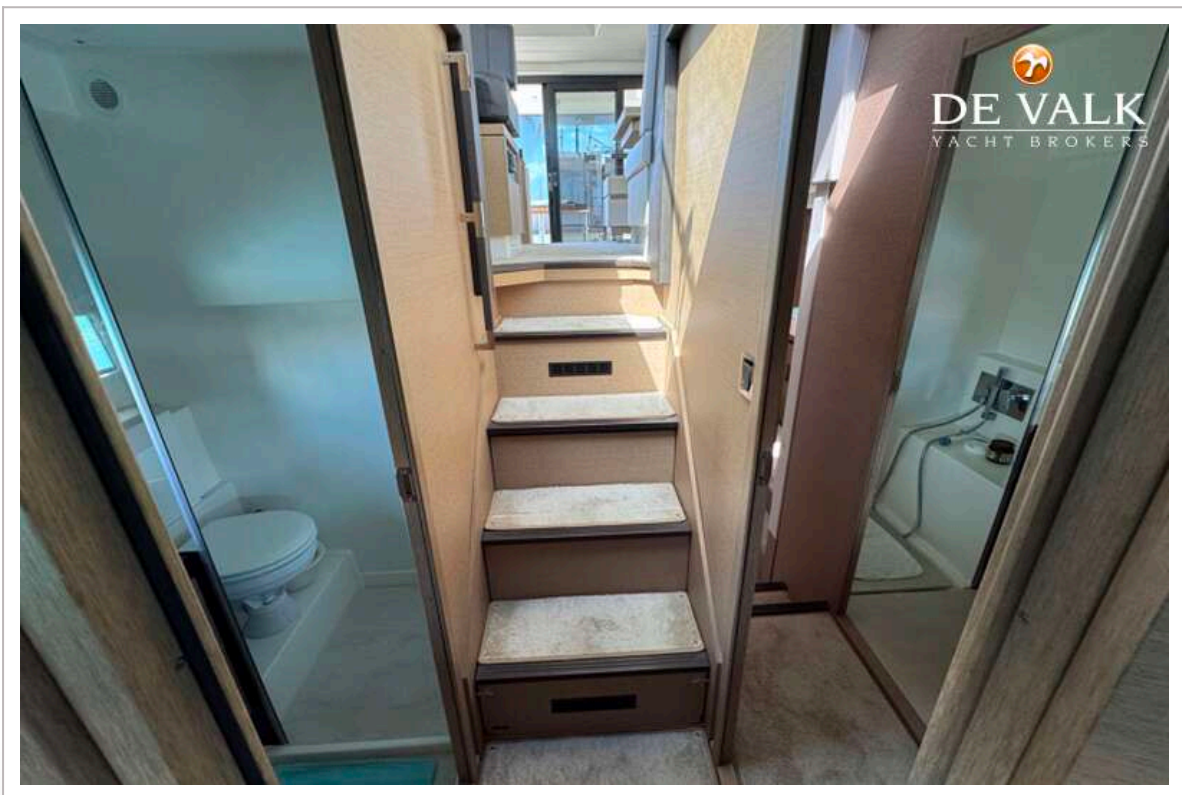
JEANNEAU PRESTIGE 460



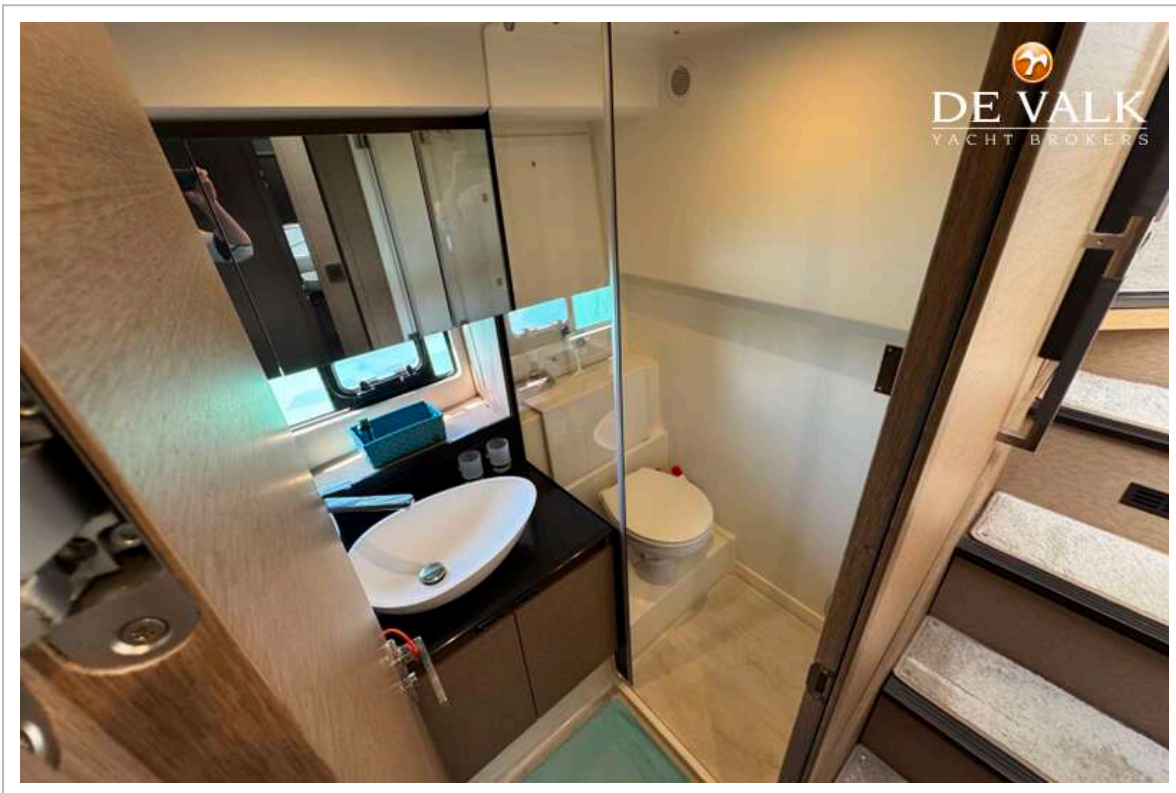
JEANNEAU PRESTIGE 460



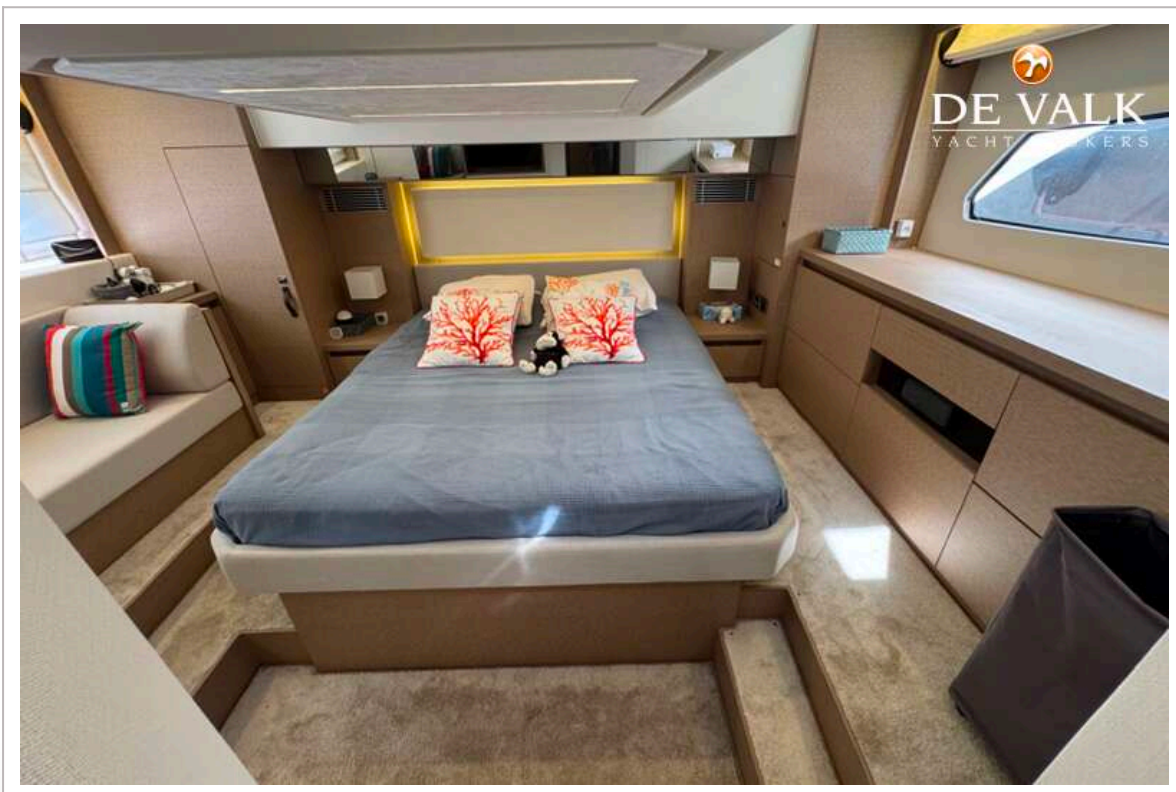
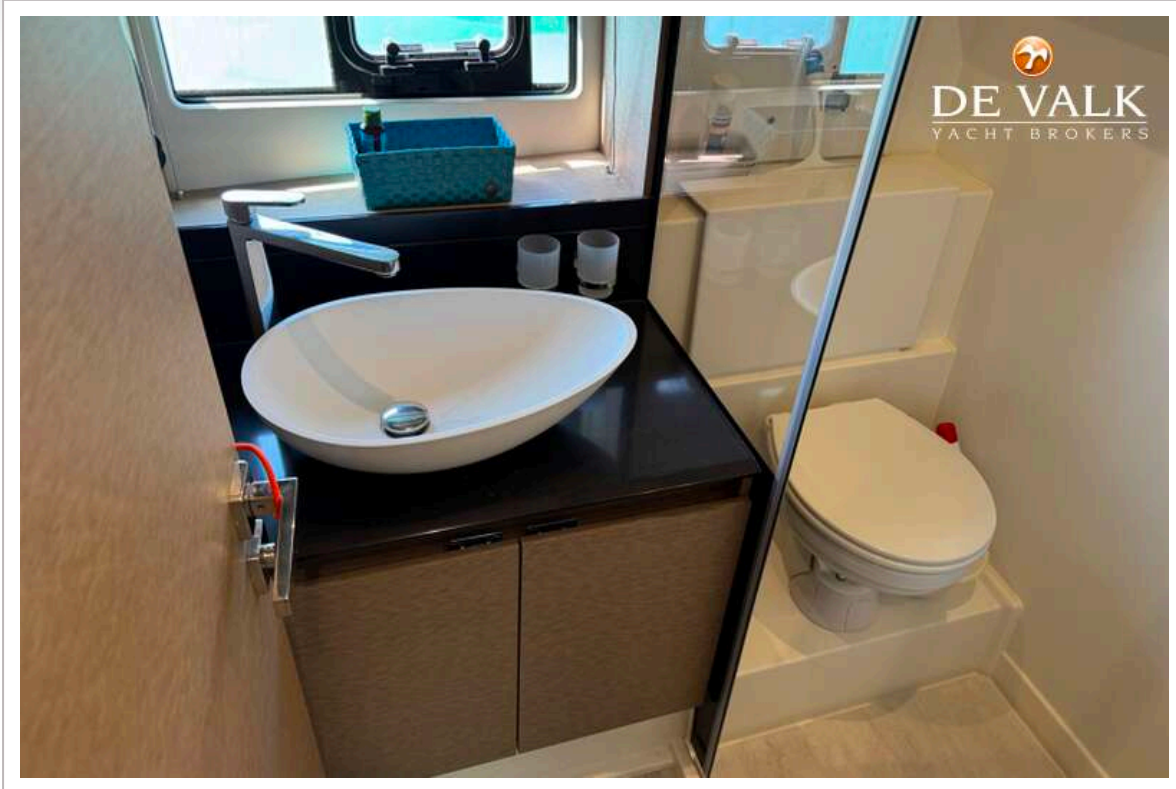
JEANNEAU PRESTIGE 460



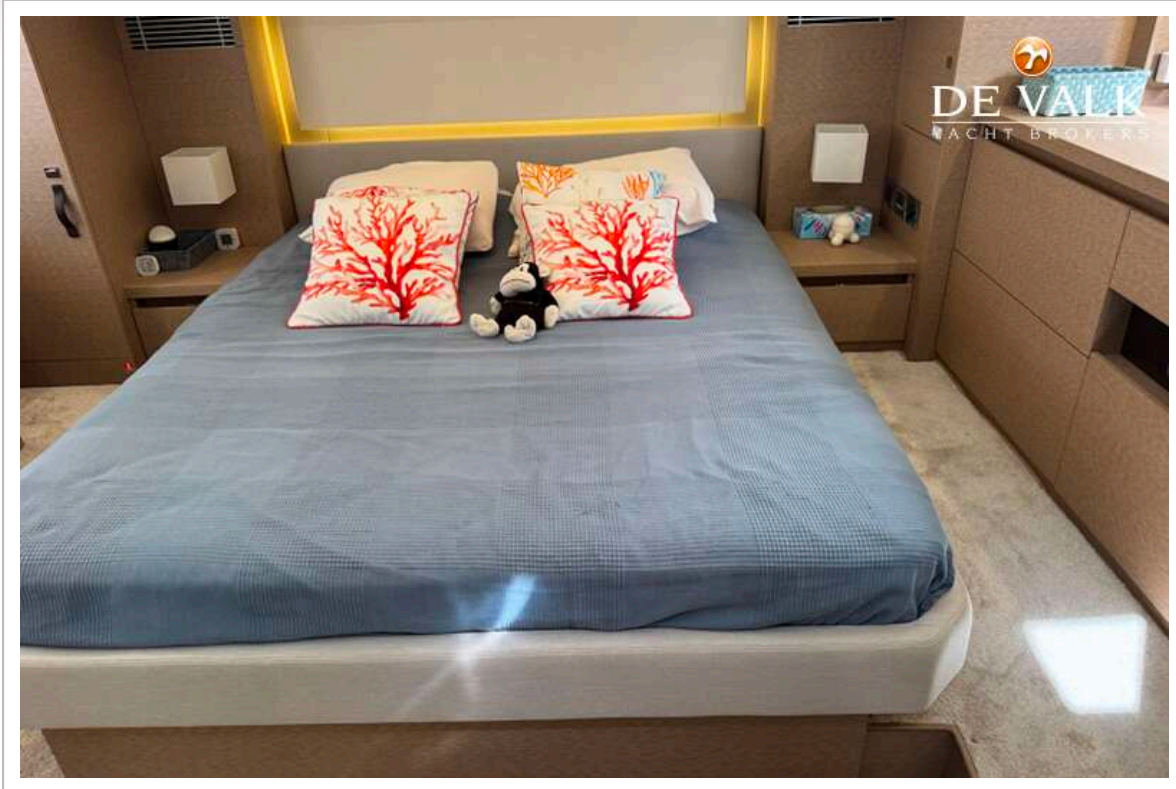
JEANNEAU PRESTIGE 460



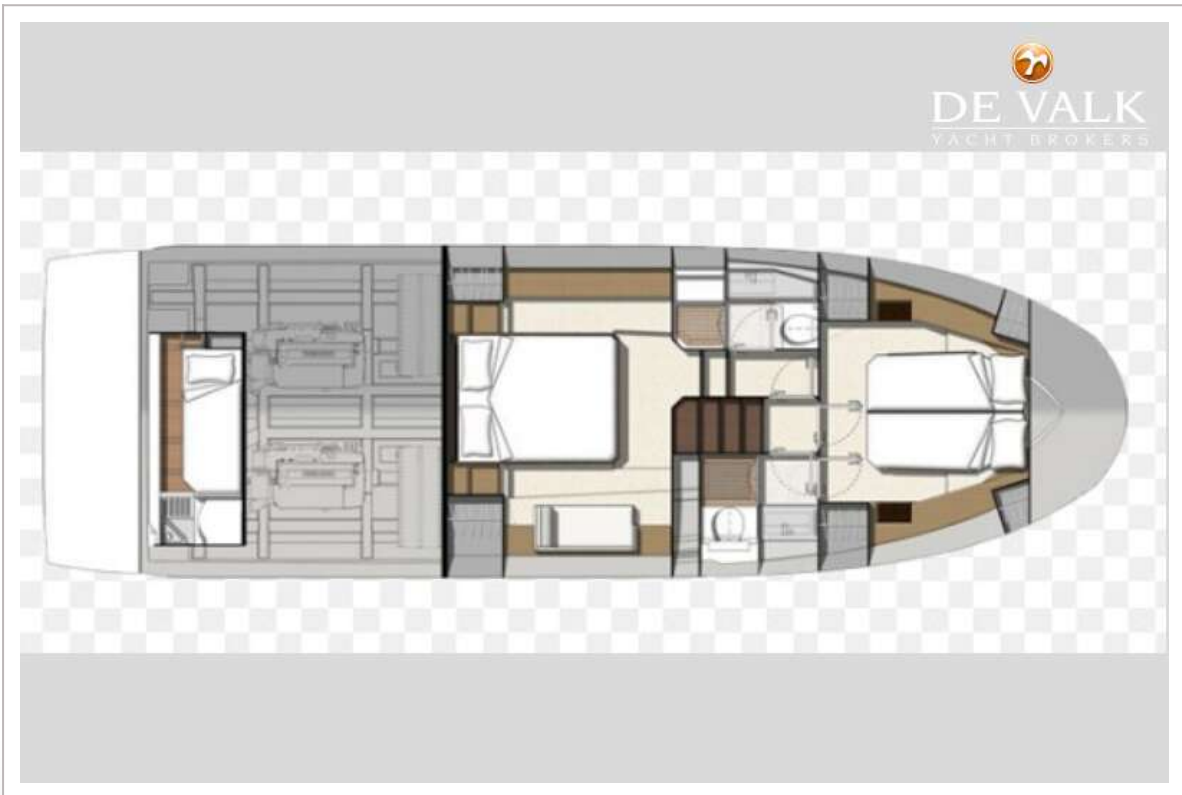
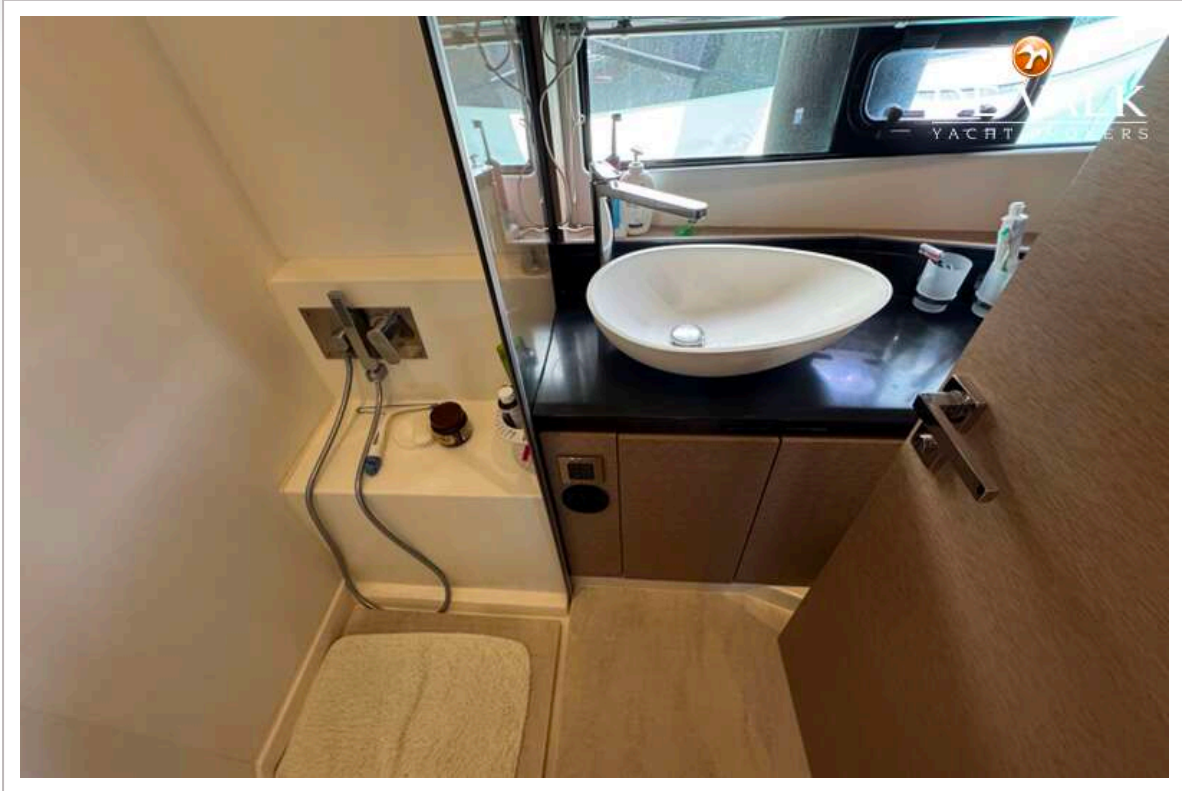
JEANNEAU PRESTIGE 460



JEANNEAU PRESTIGE 460



JEANNEAU PRESTIGE 460



JEANNEAU PRESTIGE 460

