



DE VALK  
YACHT BROKERS



PRINCESS V50



DE VALK  
YACHT BROKERS

# PRINCESS V50

## BROKER'S COMMENTS

The Princess V50 (2001) is a timeless sports cruiser that perfectly combines elegance, comfort, and seaworthiness. Built to Princess Yachts' renowned standards, it offers exceptional craftsmanship, a spacious and practical layout, and luxurious accommodation for family and guests. Its sleek design remains attractive today, while the large cockpit and bright interior make it ideal for entertaining and extended cruising. A proven and highly respected model, the Princess V50 delivers prestige, quality, and an enjoyable ownership experience that continues to hold its value in the market.

*Raoul van der Werf*

## SPECIFICATIONS

<b>Dimensions</b>	15.20 x 4.22 x 1.10 (m)	<b>Builder</b>	Princess Yachts
<b>Built</b>	2001	<b>Cabins</b>	2
<b>Material</b>	GRP	<b>Berths</b>	4
<b>Engine(s)</b>	2 x VOLVO PENTA D12C-A MP diesel	<b>Hp/Kw</b>	2 x 702.00 (hp), 516.67 (kw)
<b>Asking price</b>	€ 179.000 (VAT Paid)	<b>Lying</b>	contact Antibes

## CONTACT

<b>Sales office</b>	De Valk Antibes	<b>Telephone</b>	+33 492 91 0202
<b>Address</b>	2, Avenue de Verdun 06600 Antibes FR	<b>E-mail</b>	antibes@devalk.nl

## DISCLAIMER

These particulars are given in good faith as supplied but cannot be guaranteed.



# PRINCESS V50

## GENERAL

Model	PRINCESS V50
Type	motor yacht
LOA (m)	15,20
Beam (m)	4,22
Draft (m)	1,10
Year built	2001
Builder	Princess Yachts
Displacement (t)	16
CE norm	B
Hull material	GRP
Hull colour	white
Hull shape	deep-V
Deck finish	teak
Antifouling (year)	2025
Radar arch	non collapsible
Fuel tank (litre)	2000L
Level indicator (fuel tank)	yes
Freshwater tank (litre)	436 L
Level indicator (freshwater)	yes
Wheel steering	hydraulic
Inside helm position	yes

## ACCOMMODATION

Cabins	2
Berths	4
Saloon	yes
Air-conditioning	reverse cycle airco
Navigation center	Raytheon
Galley	yes
Countertop	yes



# PRINCESS V50

<b>Cooker</b>	electric
<b>Fridge</b>	yes
<b>Hot water system</b>	yes
<b>Water pressure system</b>	yes
<b>Hot water tap</b>	yes
<b>Bed length (m)</b>	2m
<b>Wardrobe</b>	drawers and shelves
<b>Bathroom</b>	en suite
<b>Toilet</b>	en suite
<b>Toilet system</b>	yes
<b>Wash basin</b>	yes
<b>Shower</b>	en suite
<b>Guest cabin 1</b>	yes
<b>Bed length (m)</b>	2m
<b>Wardrobe</b>	drawers and shelves
<b>Bathroom</b>	en suite
<b>Toilet</b>	en suite
<b>Toilet system</b>	electric
<b>Wash basin</b>	yes
<b>Shower</b>	en suite
<b>Wet bar</b>	yes

## MACHINERY

<b>No of engines</b>	2
<b>Make</b>	VOLVO PENTA
<b>Type</b>	D12C-A MP
<b>HP</b>	702
<b>kW</b>	516.67
<b>Fuel</b>	diesel
<b>Maximum speed (kn)</b>	34
<b>Cruising speed (kn)</b>	25



# PRINCESS V50

Engine hours	1100
Drive	shaft
Engine controls	electrical
Bowthruster	electric Side Power with Yachtcontroller
Sternthruster	electric Side Power with Yachtcontroller
Manual bilge pump	yes
Electric bilge pump	yes
Bilge alarm	yes
Generator	PICCOLO 8 - 2022
Batteries	yes
Start battery	yes
Service battery	yes
Navigation Battery	yes
Generator battery	yes
Bowthruster battery	yes
Battery charger	yes
Shorepower	with cable

## NAVIGATION

Compass	Raytheon
Depth sounder	Raytheon
VHF	yes
Autopilot	Ray Marine I70 multidisplay
GPS	Raymarine
Plotter	Raytheon
Radar/GPS/plotter	Ray Marine C120
Wifi antenna	Starlink
Navigation lights	yes

## EQUIPMENT

Bimini	yes
--------	-----



# PRINCESS V50

Winter cover	yes
Cockpit cushions	yes
Cockpit table	yes
Bathing platform	yes
Gangway	yes
Deck shower	yes
Anchor	yes
Anchor chain	yes
Horn	yes
Fenders	yes
Mooring lines	yes
TV	Sony
Radio	yes



# PRINCESS V50



# PRINCESS V50



# PRINCESS V50



# PRINCESS V50



# PRINCESS V50



# PRINCESS V50



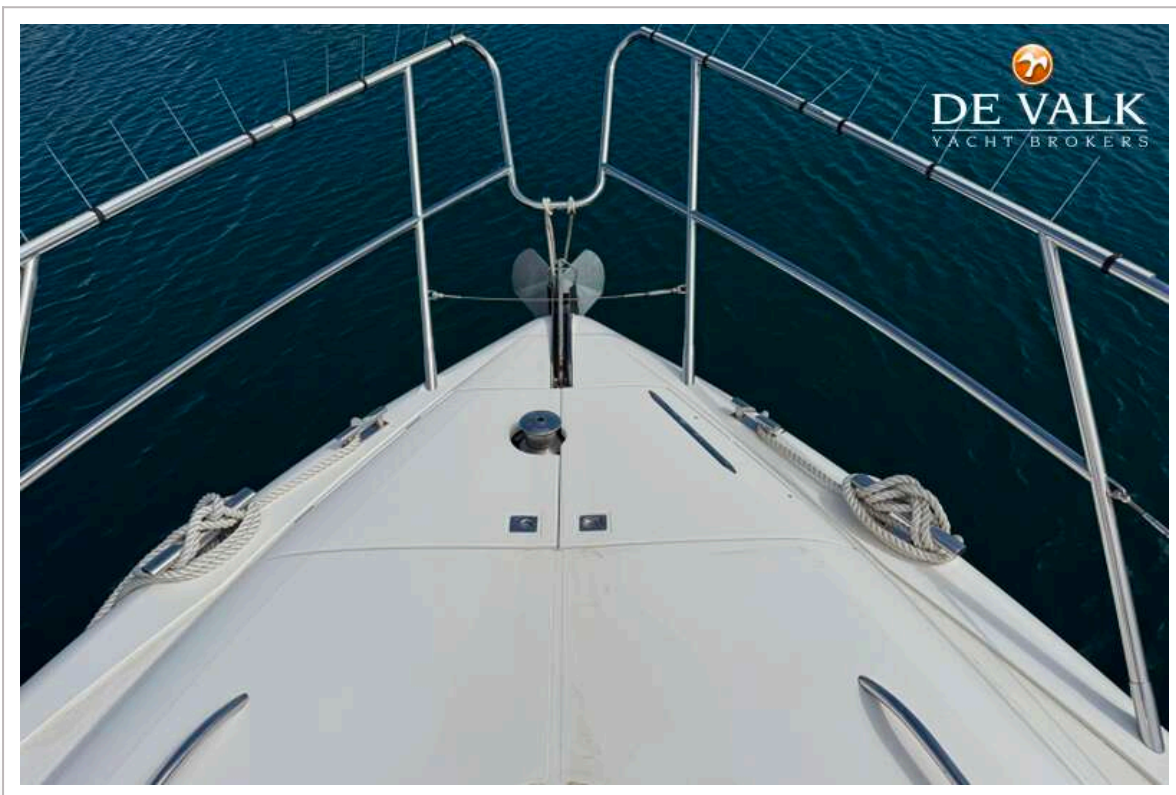
# PRINCESS V50



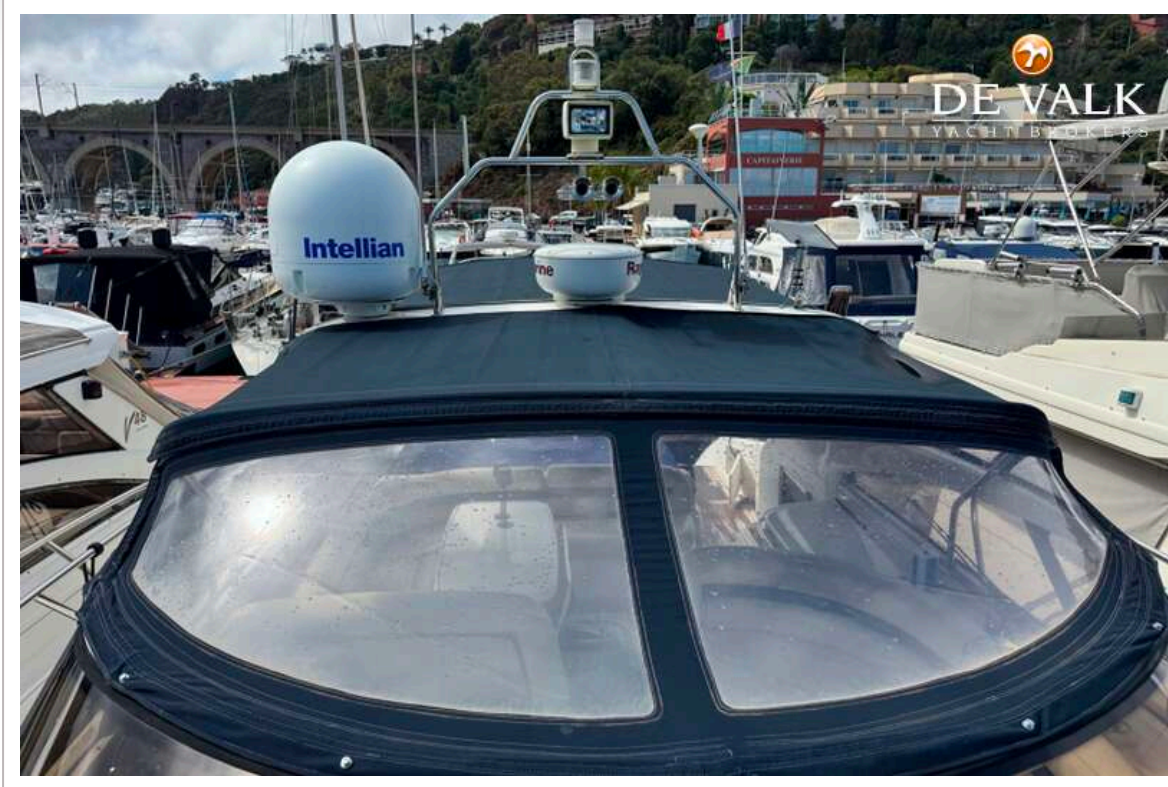
# PRINCESS V50



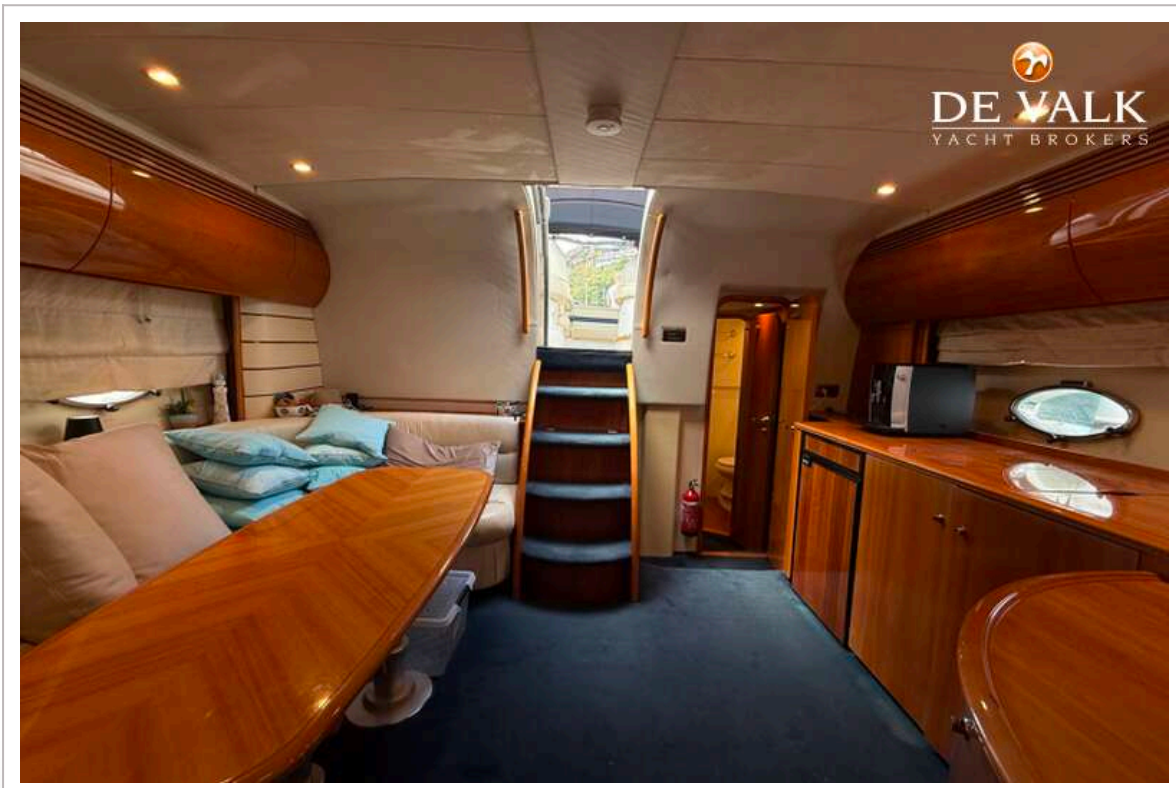
# PRINCESS V50



# PRINCESS V50



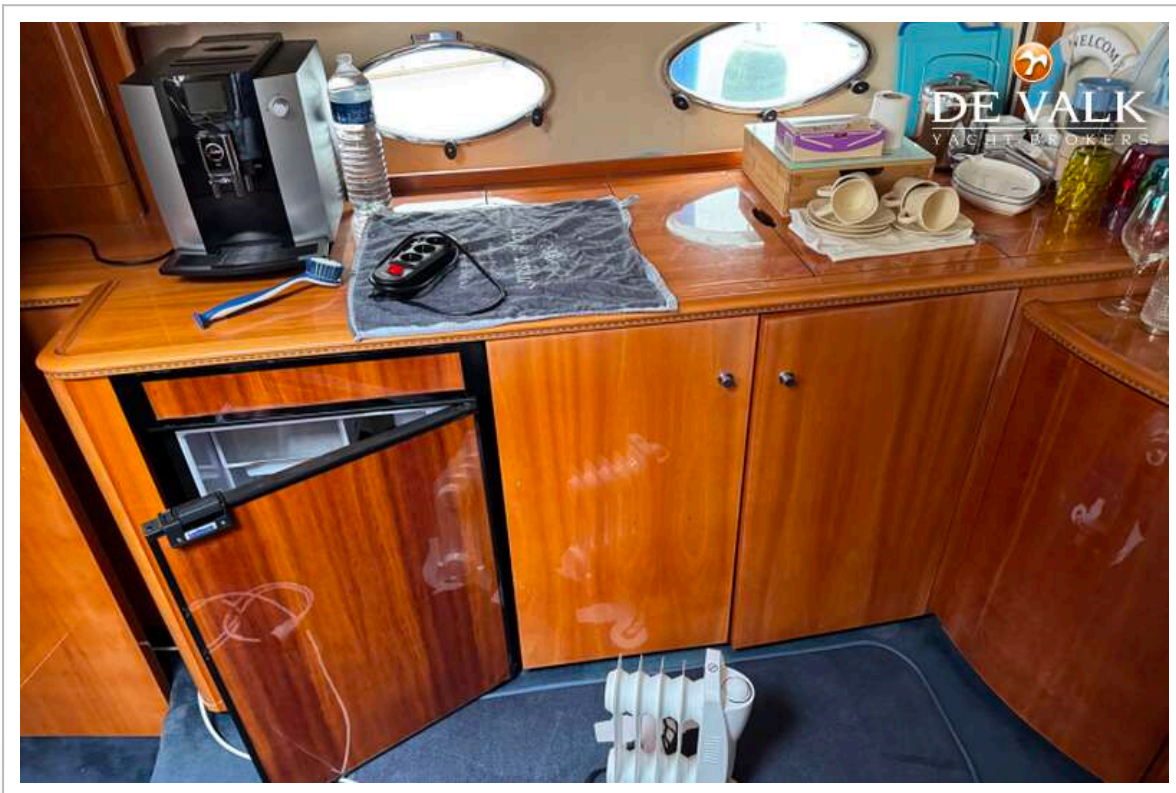
# PRINCESS V50



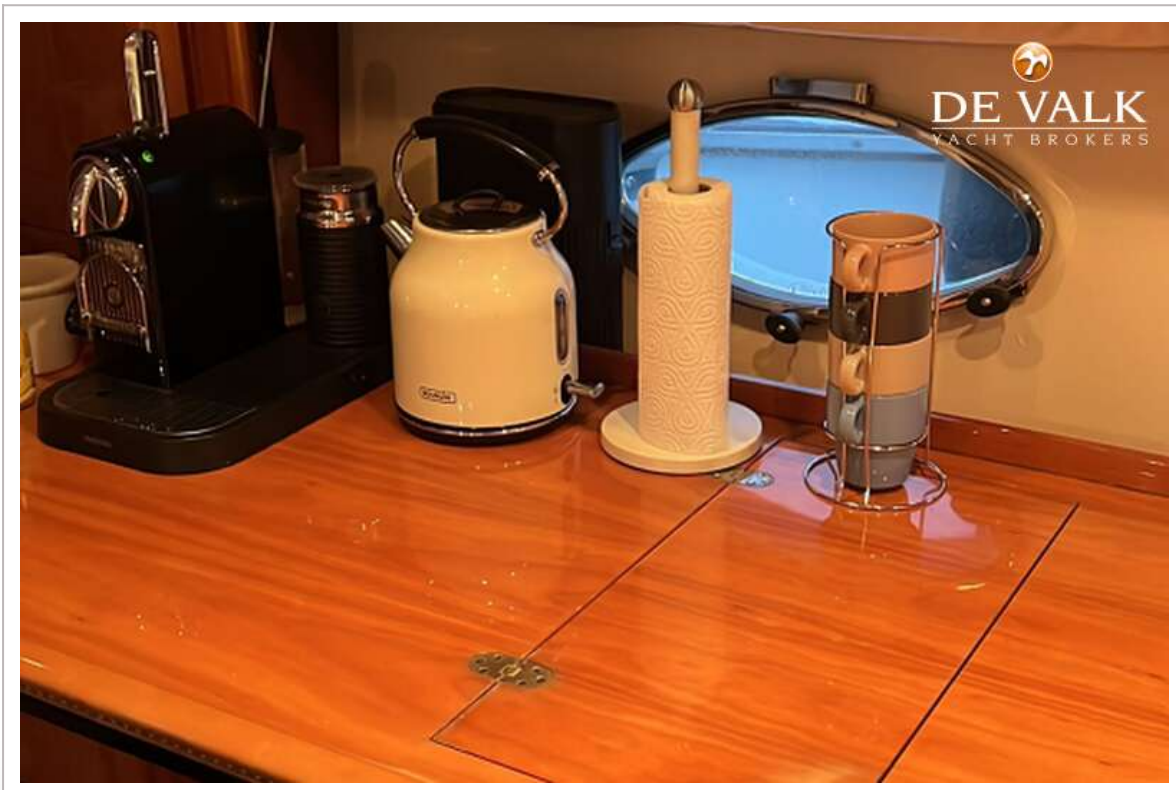
# PRINCESS V50



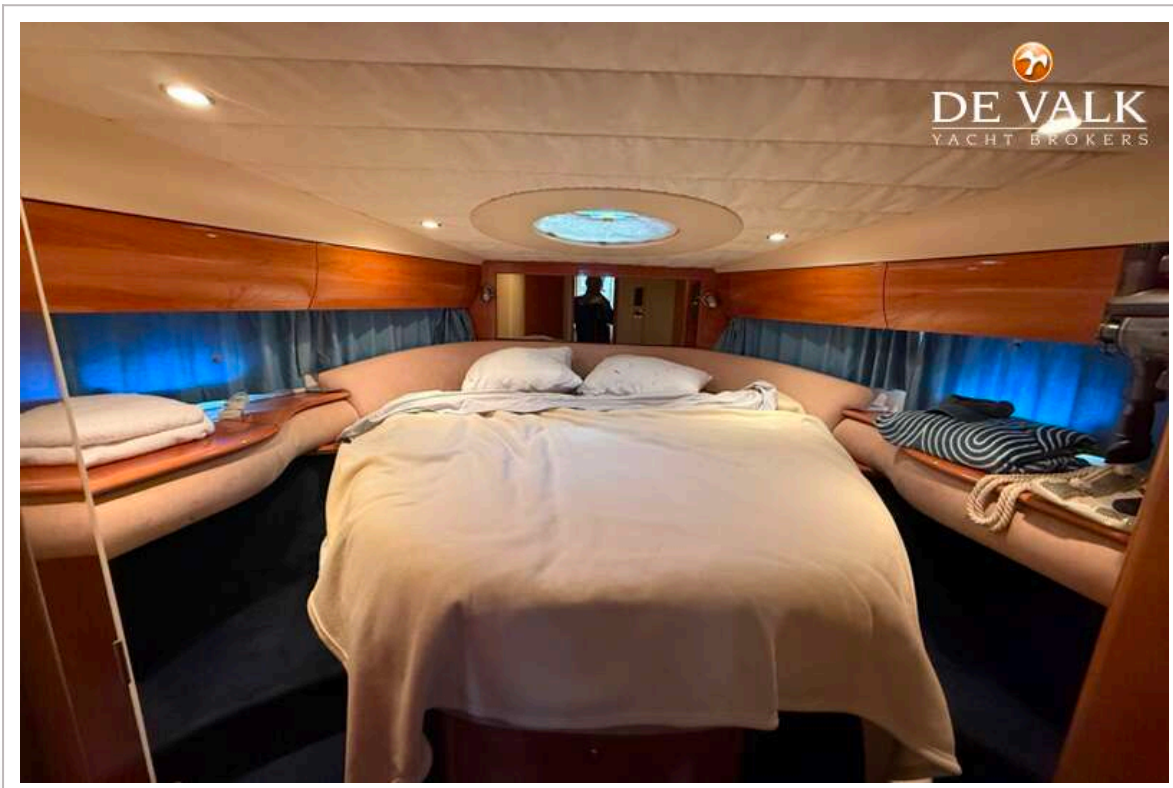
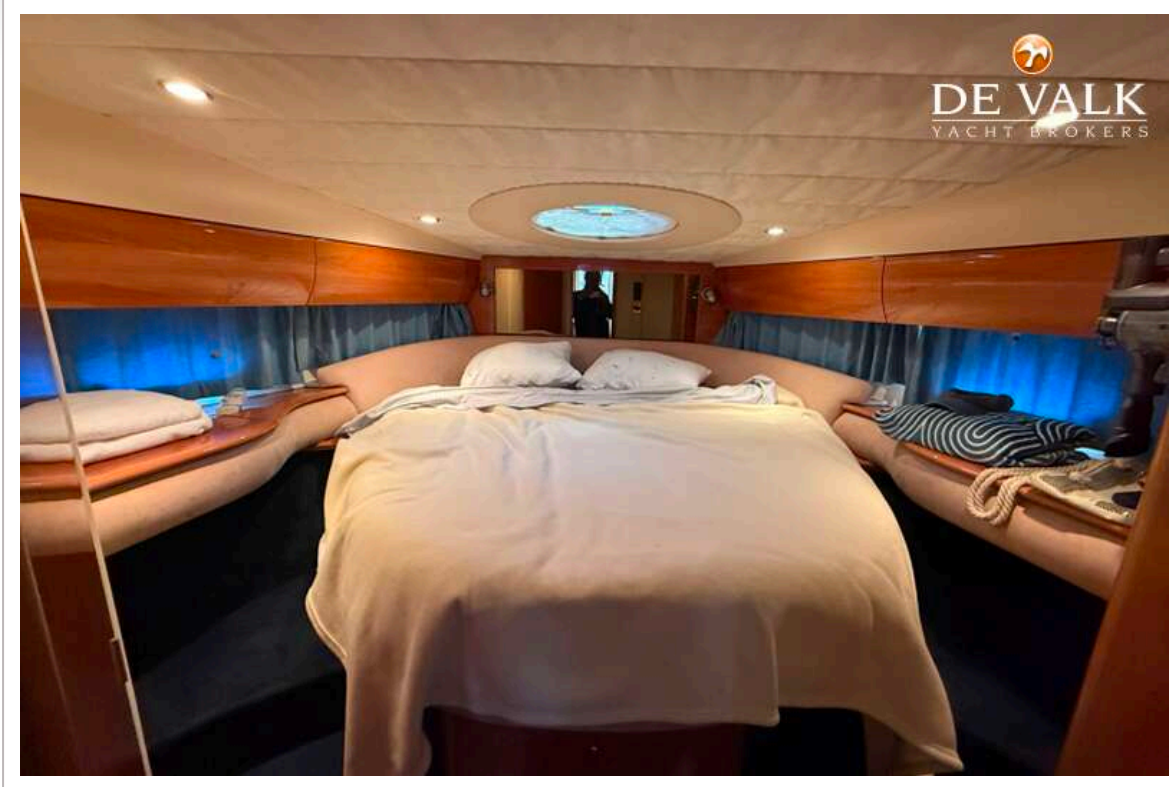
# PRINCESS V50



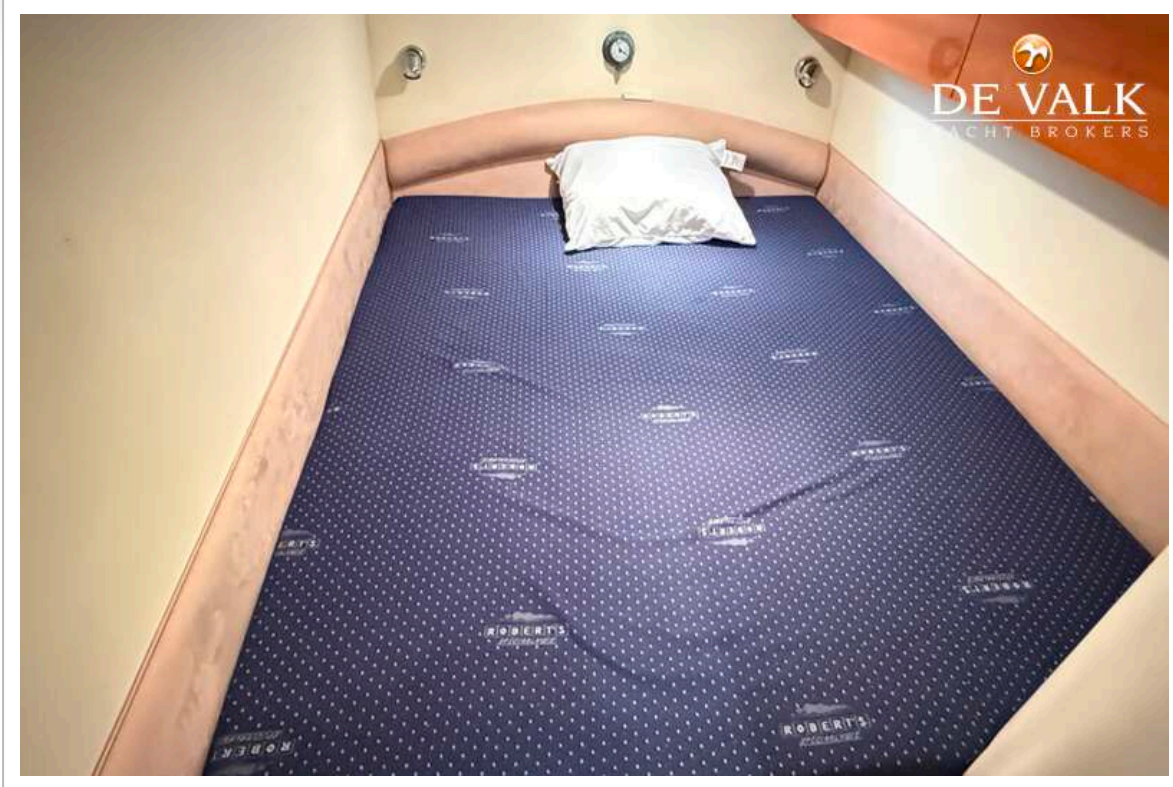
# PRINCESS V50



# PRINCESS V50



# PRINCESS V50



# PRINCESS V50



# PRINCESS V50

