



DE VALK
YACHT BROKERS



BOARNCRUISER 42 LOUNGE



DE VALK
YACHT BROKERS

BOARNCRUISER 42 LOUNGE

BROKER'S COMMENTS

'Unique, Outdoor Feeling, Comfort & Design' are the four key features of this Boarncruiser 42 Lounge. This young Boarncruiser 42 Lounge was built entirely to the specifications of its first (and only) owner. This boat boasts a very long and extensive list of options, offering you every comfort and a touch of class on those lovely summer days. A boat with which you can create beautiful and memorable moments this coming summer! A boat you simply must see if you are considering purchasing a Cabriolet. Come and visit her in Sneek

Sjoerd Paddenburg

SPECIFICATIONS

Dimensions	12.95 x 3.95 x 1.10 (m)	Builder	Jachtwerf de Boarnstream
Built	2023	Cabins	1
Material	Steel	Berths	2
Engine(s)	1 x Volvo Penta D3-110 diesel	Hp/Kw	110.00 (hp), 80.96 (kw)
Asking price	€ 545.000 (VAT Paid)	Lying	contact Loosdrecht

CONTACT

Sales office	De Valk Sneek	Telephone	+31 (0)515 42 80 30
Address	Zwolsmanweg 7 8606 KC Sneek NL	E-mail	sneek@devalk.nl

DISCLAIMER

These particulars are given in good faith as supplied but cannot be guaranteed.



BOARNCRUISER 42 LOUNGE

GENERAL

Model	BOARNCRUISER 42 LOUNGE
Type	motor yacht
LOA (m)	12,95
Beam (m)	3,95
Draft (m)	1,10
Air draft (m)	2,28
Headroom (m)	2,00
Year built	2023
Builder	Jachtwerf de Boarnstream
Country	The Netherlands
Designer	Boarnstream Yachting
Displacement (t)	11,9
CE norm	B
Hull material	steel
Hull colour	blue
Hull shape	Chine
Superstructure material	steel
Rubbing strake	stainless steel
Deck material	steel
Deck finish	synthetic teak
Superstructure deck finish	synthetic teak
Cockpit deck finish	yes
Window material	glass
Deckhatch	yes
Portholes	yes
Insulation	yes
Radar arch	collapsible
Fuel tank (litre)	steel 600
Level indicator (fuel tank)	yes
Freshwater tank (litre)	polyethylene 400



BOARNCRUISER 42 LOUNGE

Level indicator (freshwater)	yes
Blackwater tank (litre)	polyethylene 240
Level indicator (blackwater)	yes
Blackwater tank extraction	pump
Wheel steering	hydraulic
Outside helm position	hydraulic
More info on paintwork	Hull, superstructure and inside cockpit, spraypainted with metallic paint
Extra info	Hydronautica remote steering control for bow/thruster and engine control forward and reverse
Extra info	the radar bracket can be fold down

ACCOMMODATION

Cabins	1
Berths	2
Layout	yes
Floor	woodprint
Open cockpit	yes
Saloon	yes
Headroom saloon (m)	2.00 m
Heating	diesel ducted hot air Webasto
Air-conditioning	yes
Navigation center	Raymarine chart plotter screen
Chart table	yes
Opening door to cockpit	yes
Galley	yes
Countertop	plastic
Sink	stainless steel
Cooker	electric
Fridge	yes
Freezer	yes
Hot water system	220V + engine



BOARNCRUISER 42 LOUNGE

Water pressure system	electrical
Dishwasher	yes
Owners cabin	double bed
Wardrobe	hanging/drawers/shelves
Bathroom	separate
Toilet	separate
Toilet system	electric
Wash basin	in the bathroom
Shower	separate
Extra info	2 doors (BB/SB) in the bulwark for easy entry and exit on the jetty, Acces hatch, acces door and frame also painted in Stardust Metallic Luxury "infinity" flooring,
Wet bar	yes
Extra info	yes

MACHINERY

No of engines	1
Make	Volvo Penta
Type	D3-110
HP	110
kW	80.96
Fuel	diesel
Year installed	2023
Maximum speed (kn)	9
Cruising speed (kn)	7
Consumption (l/hr)	4
Engine hours	300
Engine cooling system	freshwater heat exchanger
Drive	shaft
Shaft seal	yes
Engine controls	electrical
Gearbox	Volvo Penta HS45AE



BOARNCRUISER 42 LOUNGE

Bowthruster	electric Joystick and remote control Hydronautica
Sternthruster	electric Joystick and remote control Hydronautica
Exhaust	watercooled
Thrust bearing	yes
Propeller type	fixed
Propeller shaft material	stainless steel
Shaft lubrication	water
Electric bilge pump	yes
Generator	yes
Batteries	yes
Start battery	yes
Service battery	3x Lithium batteries Mastervolt ultra 24V-5500 24V/600ah
Bowthruster battery	yes
Sternthruster battery	yes
Battery monitor	yes
Battery charger/inverter	yes
Shorepower	with cable
Stabilizers	Only the preparation is on board, not the stabilizer itself
Extra info	Bow and Stern thruster heavily equipped (110 kgf), VETUS Bowpro
Extra info	2nd hot air heater in the cockpit
Extra info	Alcantara upholstery throughout the ship

NAVIGATION

Electric compass	Raymarine Aixom 16" PLUS chart plotter and Navionics chart
Multi control display	Raymarine Aixom 16" PLUS chart plotter and Navionics chart Raymarine chart plotter screen
Depth sounder	Raymarine Aixom 16" PLUS chart plotter and Navionics chart Raymarine chart plotter screen
VHF	Raymarine RAY90
Autopilot	incl. s100 remote control Raymarine P70 Evolution autopilot EV200



BOARNCRUISER 42 LOUNGE

GPS	Raymarine
Plotter	Raymarine
AIS transponder	Raymarine AIS700
Radio receiver	DAB+ and Bluetooth
Camera	Raymarine FLIR camera M-300C series with 30x digital zoom
Navigation lights	yes
Searchlight	yes
Extra info	Also equipped with a Raymarine HS5 network switch (Raynet)
Extra info	Underwater lightning (4x)

EQUIPMENT

Fixed windscreen	yes
Sprayhood	folds down in 2 parts the rear parts disappears into a storage the tent is fully unzippable as bimini tent
Cockpit cushions	yes
Cockpit table	yes
Cockpit chairs	yes
Bathing platform	yes
Boarding ladder	stainless steel
Deck shower	yes
Anchor	Bruce Stainless steel
Anchor chain	50m .stainless steel
Windlass	electrical
Sea railing	yes
Railing side opening gates	yes
Wiper	yes
Horn	yes
Fenders	yes
Mooring lines	yes
TV	smart tv custom made in front of the ship
TV receiver	yes



BOARNCRUISER 42 LOUNGE

Radio-cd player	yes
Surround Sound System	yes
Fire extinguisher	Also 2x CO-2 fire/smoke detectors



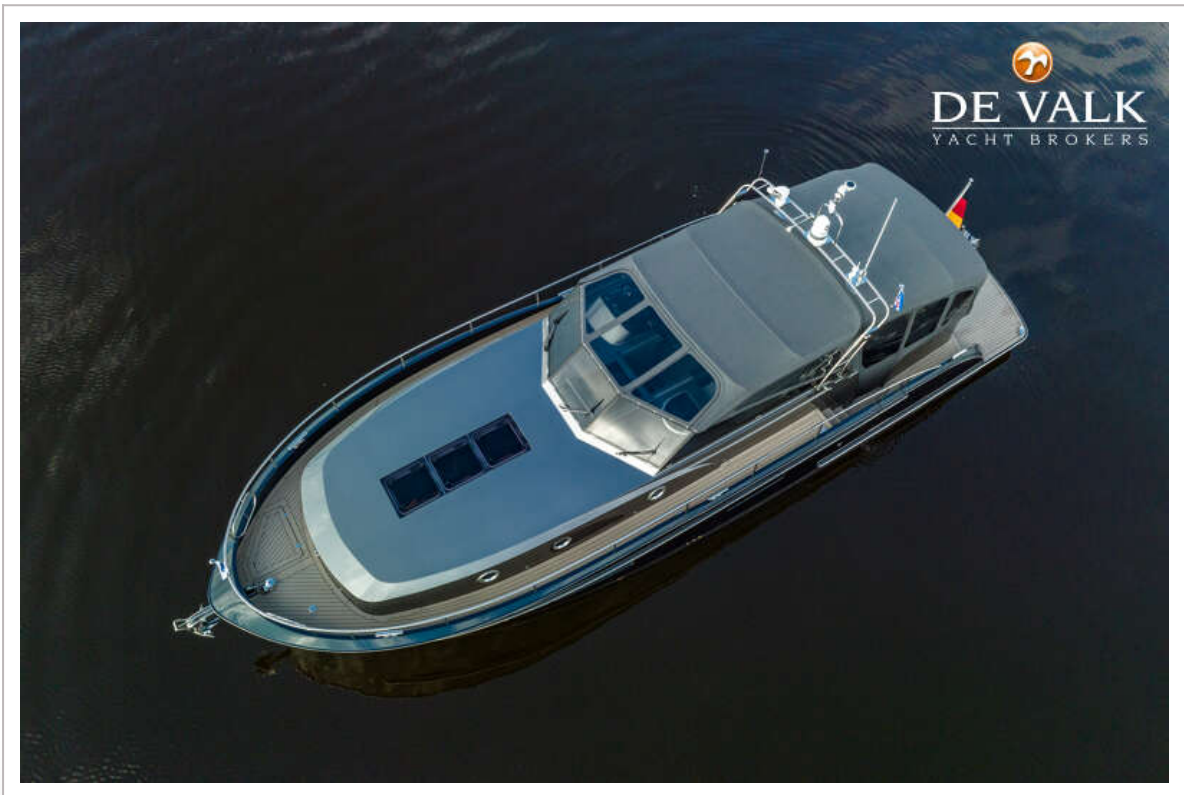
BOARNCRUISER 42 LOUNGE



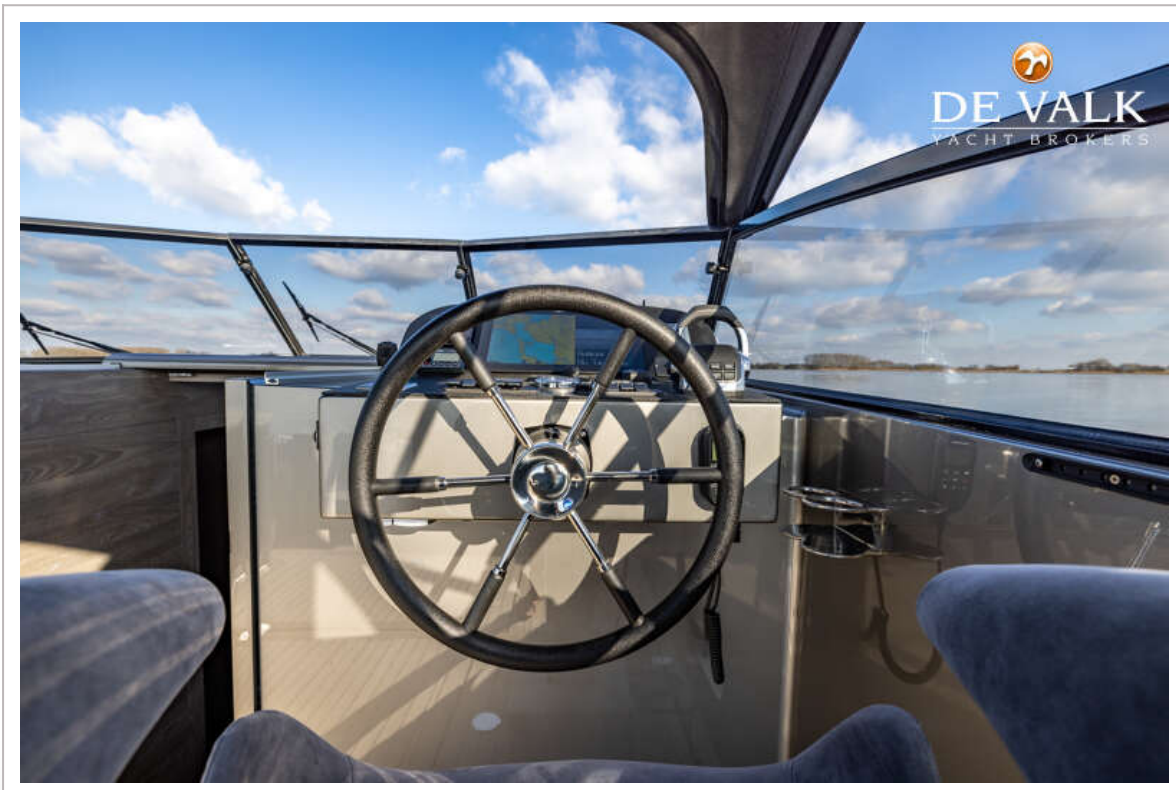
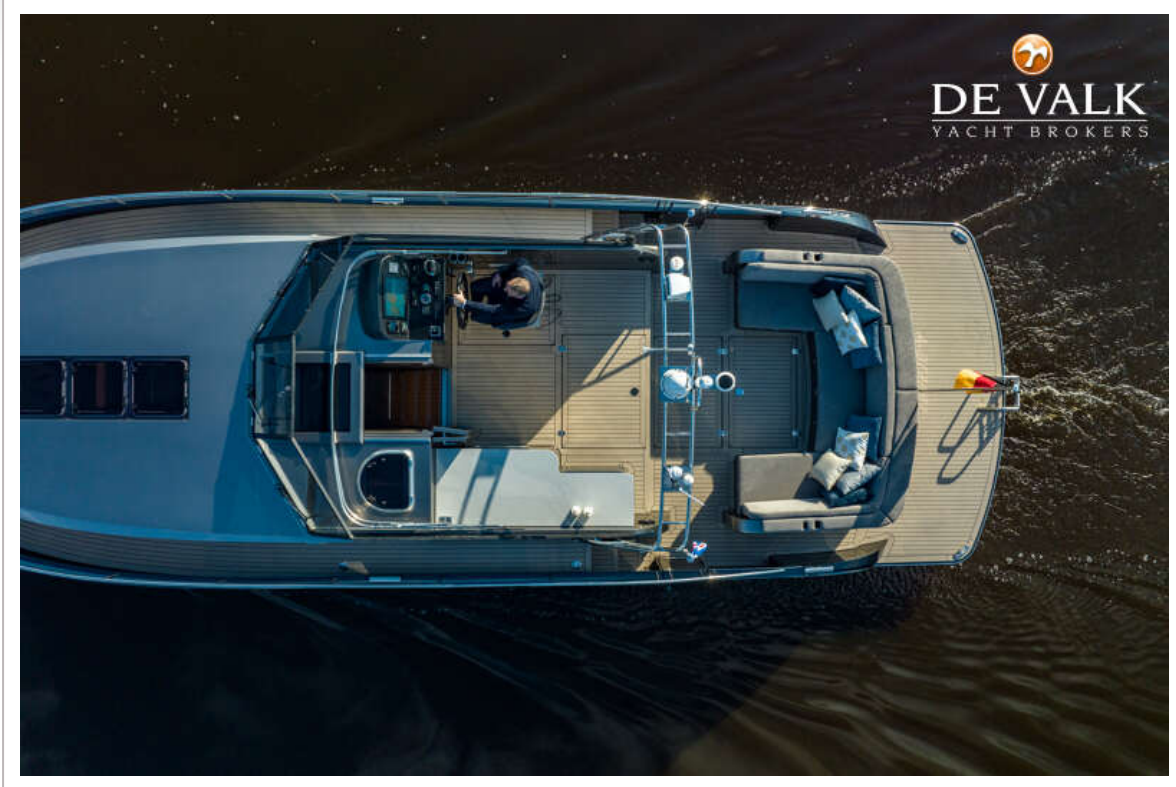
BOARNCRUISER 42 LOUNGE



BOARNCRUISER 42 LOUNGE



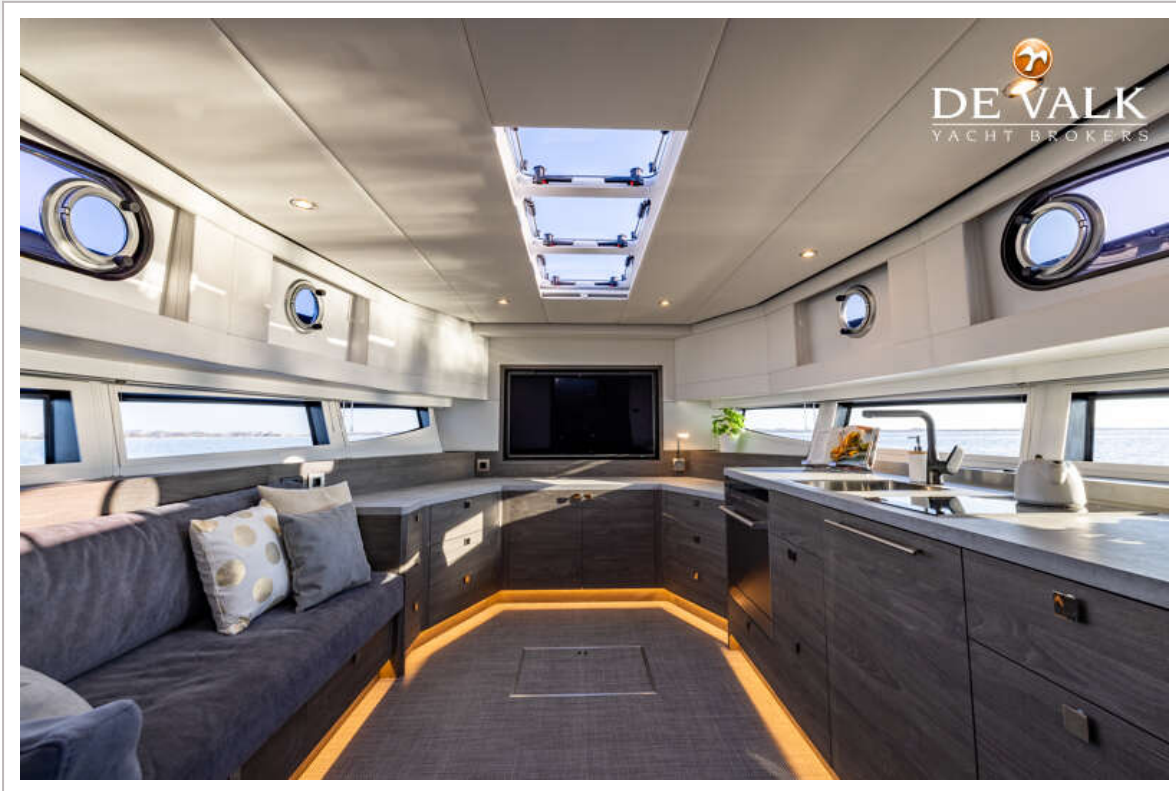
BOARNCRUISER 42 LOUNGE



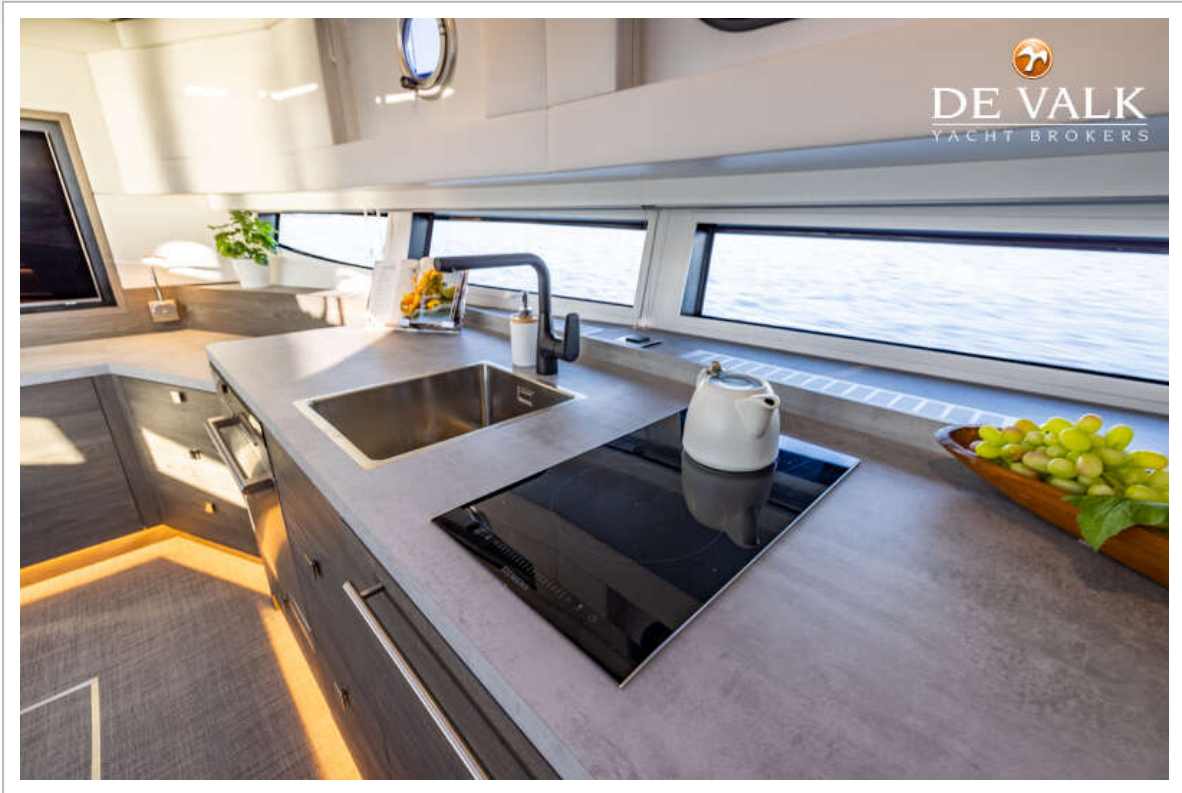
BOARNCRUISER 42 LOUNGE



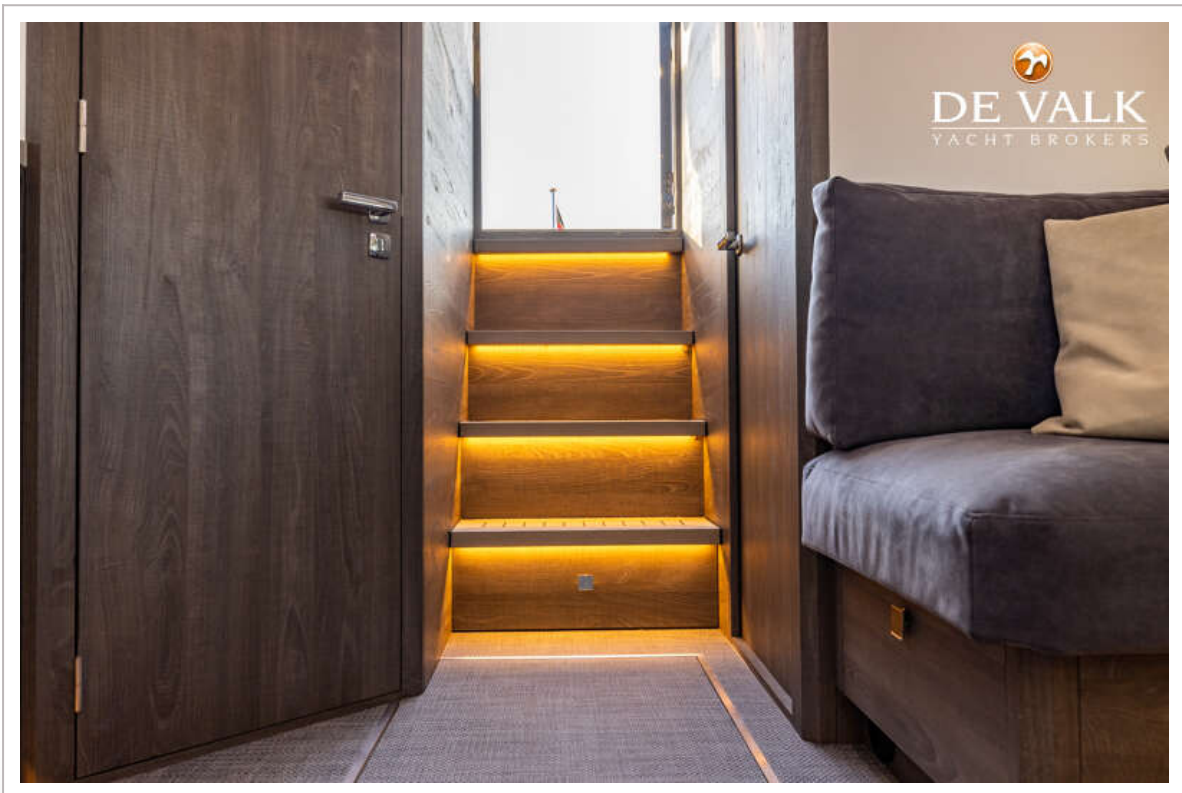
BOARNCRUISER 42 LOUNGE



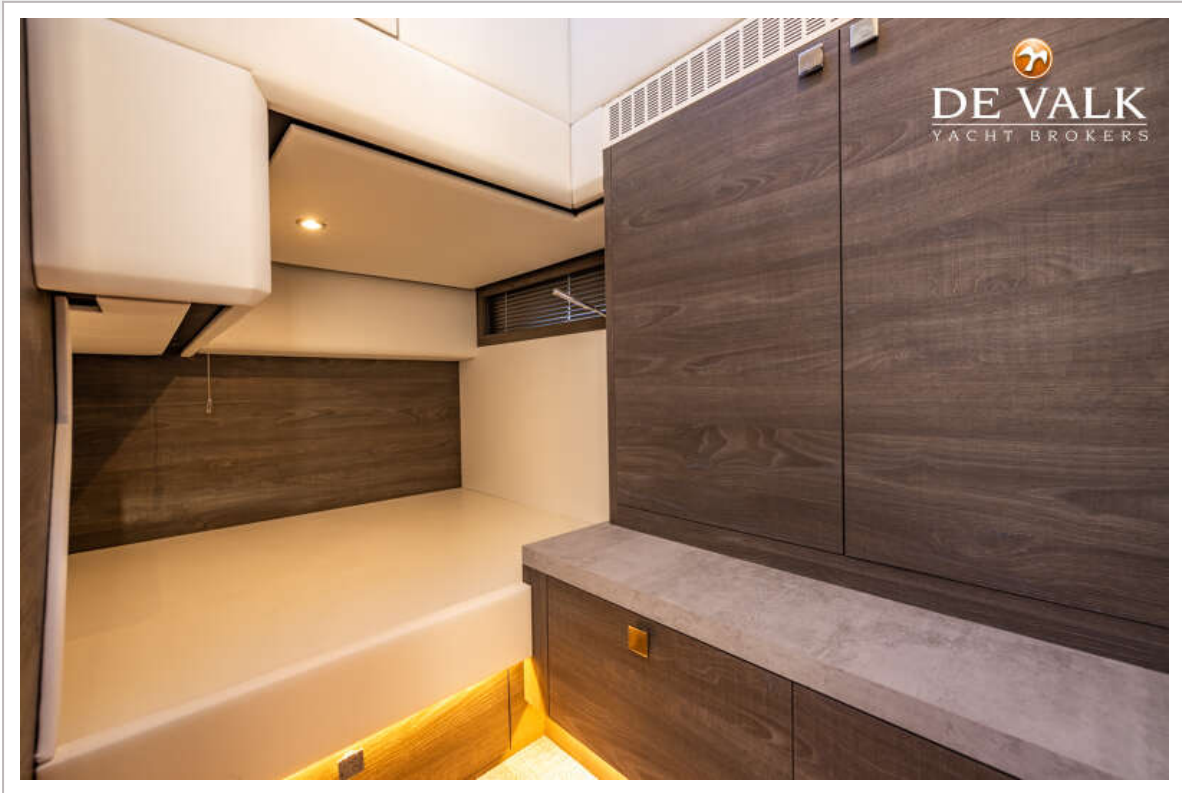
BOARNCRUISER 42 LOUNGE



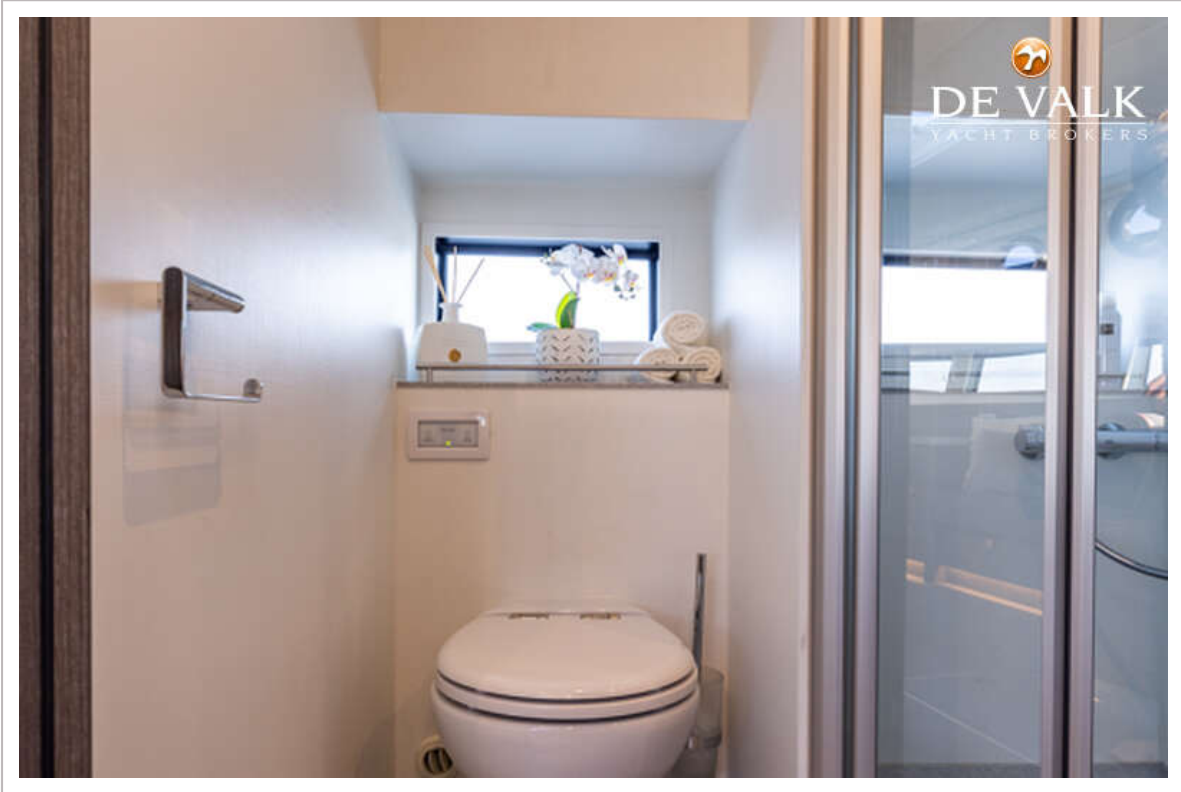
BOARNCRUISER 42 LOUNGE



BOARNCRUISER 42 LOUNGE



BOARNCRUISER 42 LOUNGE



BOARNCRUISER 42 LOUNGE

