



DE VALK
YACHT BROKERS



PIRELLI 35 OUTBOARD



DE VALK
YACHT BROKERS

PIRELLI 35 OUTBOARD

BROKER'S COMMENTS

This Italian-designed Pirelli 35 is in excellent condition, with only 260 engine hours and used exclusively in fresh water. Equipped with twin Mercury V8 Verado outboard engines, this RIB delivers impressive performance and an exceptional boating experience. Thanks to the joystick control system, manoeuvring is effortless. On board, nothing is missing: GPS, VHF radio, Fusion audio system, spacious sunbeds both fore and aft, a comfortable dinette, and a cabin for overnight stays. The Pirelli 35 perfectly combines sporty performance with comfort, making it ideal for day trips and extended trips.

Jeanne Stukstette

SPECIFICATIONS

| | | | |
|---------------------|------------------------------------|----------------|------------------------------|
| Dimensions | 11.55 x 3.82 x 0.90 (m) | Builder | SACS Tecnorib |
| Built | 2021 | Cabins | 1 |
| Material | GRP | Berths | 2 |
| Engine(s) | 2 x mercury V300 FV8 Verado petrol | Hp/Kw | 2 x 300.00 (hp), 220.80 (kw) |
| Asking price | € 315.000 (VAT Paid) | Lying | at sales office |

CONTACT

| | | | |
|---------------------|---|------------------|-------------------|
| Sales office | De Valk Limburg | Telephone | +31 630372559 |
| Address | Schippersveld 3 6019 DE Wessem NL | E-mail | limburg@devalk.nl |

DISCLAIMER

These particulars are given in good faith as supplied but cannot be guaranteed.



PIRELLI 35 OUTBOARD

GENERAL

| | |
|-------------------------------------|--|
| Model | PIRELLI 35 OUTBOARD |
| Type | motor yacht |
| LOA (m) | 11,55 |
| Beam (m) | 3,82 |
| Draft (m) | 0,90 |
| Air draft (m) | 3,06 |
| Headroom (m) | 1,95 |
| Year built | 2021 |
| Launched | 2022 |
| Builder | SACS Tecnorib |
| Country | Italy |
| Designer | Mannerfelt Design Team |
| Net tonnage | 5,7 |
| CE norm | B |
| Hull material | GRP |
| Hull colour | white |
| Hull shape | deep-V |
| Deck finish | synthetic teak |
| Antifouling (year) | 2026 |
| Deckhatch | 1x |
| Portholes | 4x |
| Fuel tank (litre) | polyethylene 740 |
| Level indicator (fuel tank) | yes |
| Freshwater tank (litre) | polyethylene 150 |
| Level indicator (freshwater) | yes |
| Blackwater tank (litre) | polyethylene 40 |
| Level indicator (blackwater) | yes |
| Wheel steering | hydraulic + Premium Joystick Control System (Advanced Maneuvering) |



PIRELLI 35 OUTBOARD

ACCOMMODATION

| | |
|-------------------------|---------------------------------------|
| Cabins | 1 |
| Berths | 2 |
| Dinette | yes |
| Sliding door to cockpit | yes |
| Countertop | plastic |
| Sink | yes |
| Fridge | yes |
| Water pressure system | electrical |
| Owners cabin | double bed |
| Toilet | shared |
| Toilet system | electric |
| Wash basin | in the cabin |
| Shower | shared |
| Extra info | Spacious sunbathing and seating areas |
| Extra info | Exceptional storage capacity |

MACHINERY

| | |
|-----------------------|---------------------------------|
| No of engines | 2 |
| Make | Mercury |
| Type | V300 FV8 Verado |
| HP | 300 |
| kW | 220.80 |
| Fuel | petrol |
| Year installed | 2021 |
| Maximum speed (kn) | 45 |
| Cruising speed (kn) | 5 |
| Engine hours | 260 |
| Engine cooling system | freshwater heat exchanger |
| Drive | outboard |
| Engine controls | electrical QUICK AUTOMATIC TRIM |



PIRELLI 35 OUTBOARD

| | |
|---------------------------------|--|
| Bowthruster | Premium Joystick Control System (Advanced Maneuvering) |
| Sternthruster | Premium Joystick Control System (Advanced Maneuvering) |
| Electric bilge pump | yes |
| Batteries | 3x 2021 |
| Start battery | yes |
| Service battery | yes |
| Battery monitor | yes |
| Battery charger/inverter | Victron energy phoenix 12/800 |
| Shorepower | with cable |
| Auto positioning system | Mercury Skyhook |
| Extra info | Automatic trim |
| Extra info | serviced annually by authorized Mercury dealer |

NAVIGATION

| | |
|-------------------------------|-----------|
| Compass | yes |
| Multi control display | 2x simrad |
| Depth sounder | 2x simrad |
| Log | 2x simrad |
| VHF | Simrad |
| Rudder angle indicator | 2x simrad |
| GPS | 2x simrad |
| Plotter | 2x simrad |
| Navigation lights | yes |

EQUIPMENT

| | |
|-------------------------|--------------|
| Fixed windscreen | Crystal glas |
| Fixed hardtop | yes |
| Bimini | yes |
| Cockpit cushions | yes |
| Cockpit table | yes |
| Bathing platform | yes |



PIRELLI 35 OUTBOARD

| | |
|--------------------------|----------------------|
| Boarding ladder | stainless steel |
| Deck shower | yes |
| Anchor | yes |
| Anchor chain | yes |
| Windlass | electrical |
| Wiper | yes |
| Horn | yes |
| Fenders | yes |
| Mooring lines | yes |
| Radio | FUSION Stereo system |
| Cockpit speakers | yes |
| Fire extinguisher | yes |
| Extra info | Under water lights |
| Extra info | Wakeboard tower |



PIRELLI 35 OUTBOARD



PIRELLI 35 OUTBOARD



PIRELLI 35 OUTBOARD



PIRELLI 35 OUTBOARD



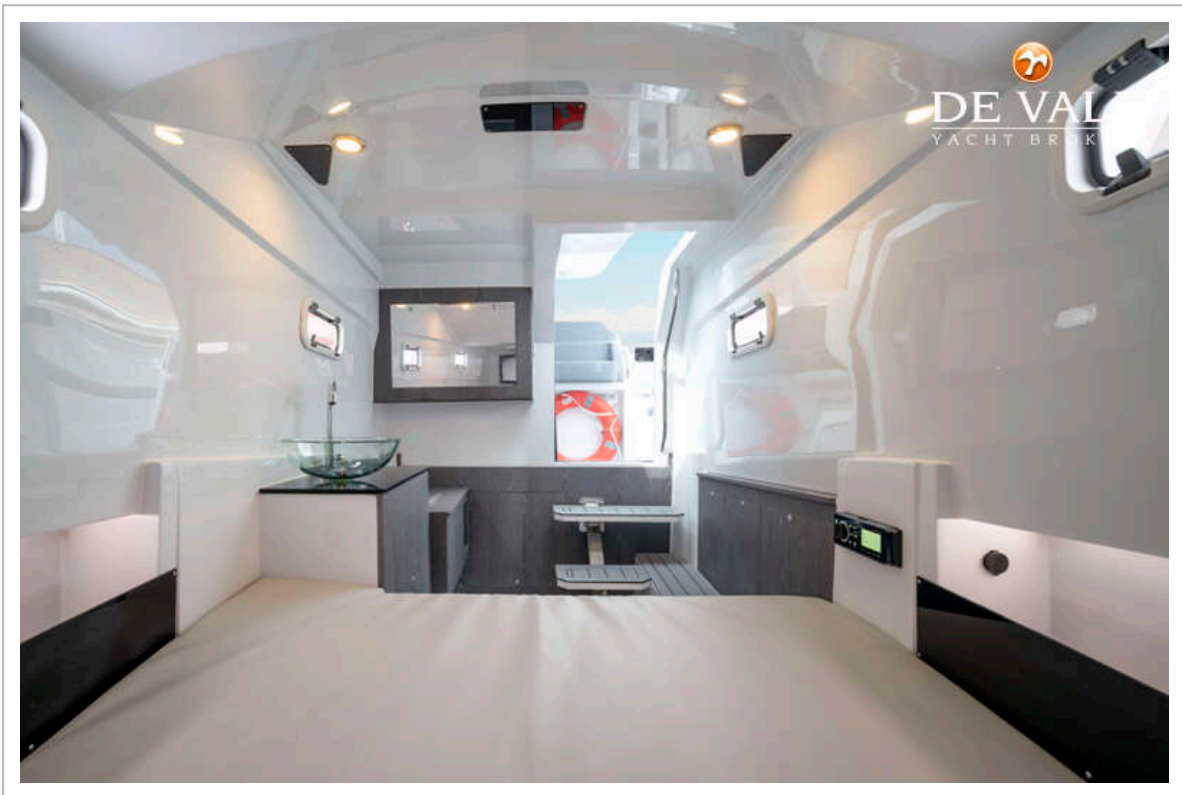
PIRELLI 35 OUTBOARD



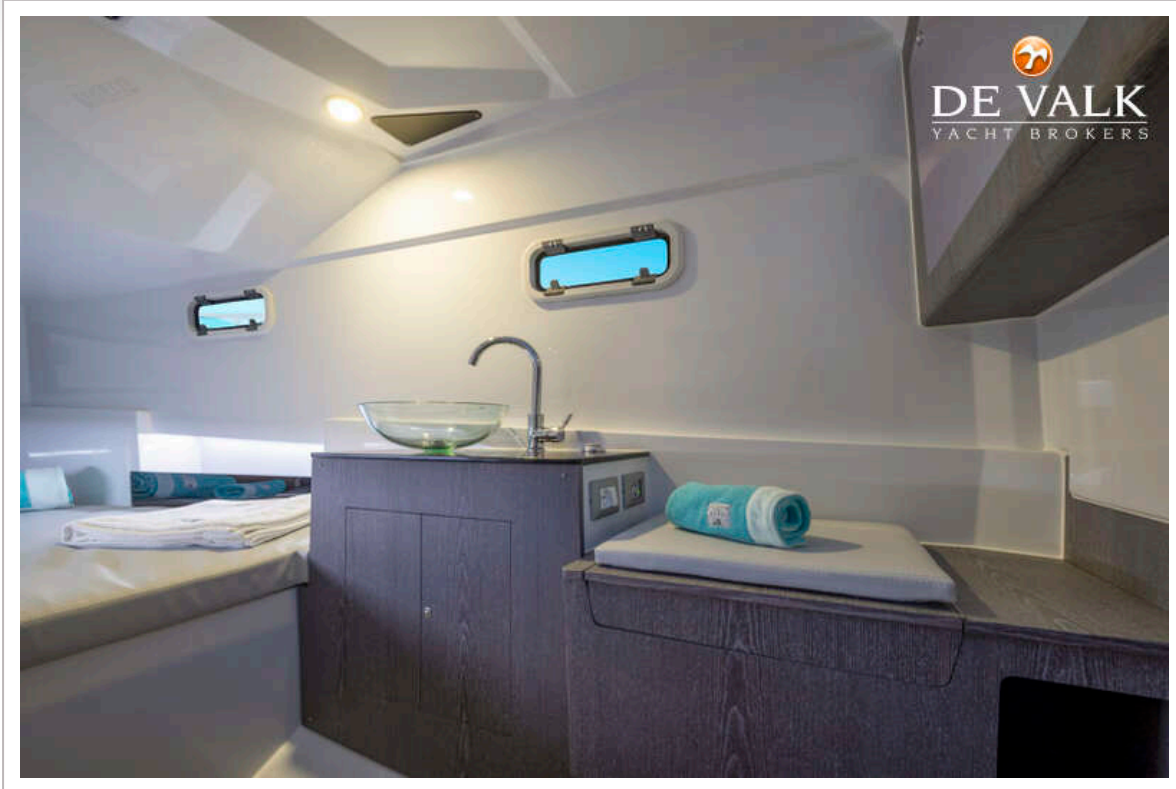
PIRELLI 35 OUTBOARD



PIRELLI 35 OUTBOARD



PIRELLI 35 OUTBOARD



PIRELLI 35 OUTBOARD



PIRELLI 35 OUTBOARD

