



DE VALK  
YACHT BROKERS



## THOMASZ YACHT 412 AC



DE VALK  
YACHT BROKERS

# THOMASZ YACHT 412 AC

## BROKER'S COMMENTS

This exclusive Thomasz Yacht 41.2 AC offers luxury, comfort and outstanding features in a modern and stylish design. Voorzien van three royale hutten, DMS stabilizer, 24 V proportional arches and heater, radar with plotter, double glass, two options for electric cookers and two powerful heating systems for optimal comfort in electric kettles. A complete, high-quality yacht, perfect for long pleasure and relaxation on the board.

*Sjoerd Paddenburg*

## SPECIFICATIONS

<b>Dimensions</b>	12.55 x 4.10 x 1.10 (m)	<b>Builder</b>	Thomasz Yachts
<b>Built</b>	2022	<b>Cabins</b>	3
<b>Material</b>	Steel	<b>Berths</b>	7
<b>Engine(s)</b>	1 x Yanmar 4JH110 diesel	<b>Hp/Kw</b>	110.00 (hp), 80.96 (kw)
<b>Asking price</b>	€ 399.000 (VAT Not paid)	<b>Lying</b>	at sales office

## CONTACT

<b>Sales office</b>	De Valk Sneek	<b>Telephone</b>	+31 (0)515 42 80 30
<b>Address</b>	Zwolsmanweg 7 8606 KC Sneek NL	<b>E-mail</b>	sneek@devalk.nl

## DISCLAIMER

These particulars are given in good faith as supplied but cannot be guaranteed.



# THOMASZ YACHT 412 AC

## GENERAL

<b>Model</b>	THOMASZ YACHT 412 AC
<b>Type</b>	motor yacht
<b>LOA (m)</b>	12,55
<b>Beam (m)</b>	4,10
<b>Draft (m)</b>	1,10
<b>Air draft (m)</b>	4,10
<b>Air draft min (m)</b>	3,10
<b>Headroom (m)</b>	2,00
<b>Year built</b>	2022
<b>Launched</b>	2023
<b>Builder</b>	Thomasz Yachts
<b>Country</b>	The Netherlands
<b>Designer</b>	AJ
<b>Displacement (t)</b>	17
<b>CE norm</b>	C
<b>Hull material</b>	steel
<b>Hull colour</b>	blue
<b>Hull shape</b>	multi hard chine
<b>Keel type</b>	box keel
<b>Superstructure material</b>	steel
<b>Rubbing strake</b>	stainless steel
<b>Deck material</b>	steel
<b>Deck finish</b>	synthetic teak Permateak
<b>Superstructure deck finish</b>	paint
<b>Cockpit deck finish</b>	synthetic teak Permateak
<b>Dorades</b>	yes
<b>Window material</b>	double glazing
<b>Deckhatch</b>	Stainless steel
<b>Portholes</b>	6
<b>Insulation</b>	foam



<b>Fuel tank (litre)</b>	500
<b>Level indicator (fuel tank)</b>	yes
<b>Freshwater tank (litre)</b>	polyethylene 500
<b>Level indicator (freshwater)</b>	yes
<b>Blackwater tank (litre)</b>	polyethylene 500
<b>Blackwater tank extraction</b>	deck extraction + pump
<b>Greywater tank (litre)</b>	Integrated in black water system
<b>Wheel steering</b>	hydraulic
<b>Outside helm position</b>	yes
<b>Emergency tiller</b>	yes
<b>Extra info</b>	Permateak on bathing platform.

## ACCOMMODATION

<b>Cabins</b>	3
<b>Berths</b>	7
<b>Interior</b>	oak Light
<b>Layout</b>	Modern
<b>Floor</b>	vinyl Bolon
<b>Aft deck</b>	yes
<b>Saloon</b>	yes
<b>Headroom saloon (m)</b>	2
<b>Heating</b>	Autoterm AIR 4 KW 24 V
<b>Heating 2</b>	Autoterm AIR 4 KW 24 V for helm
<b>Navigation center</b>	At helm
<b>Aft Cabin</b>	2 x
<b>Opening door to aft deck</b>	yes
<b>Galley</b>	In saloon
<b>Countertop</b>	Corean
<b>Sink</b>	stainless steel
<b>Cooker</b>	ceramic 2 burner Bosch
<b>Microwave/oven combi</b>	Miele



# THOMASZ YACHT 412 AC

<b>Fridge</b>	yes
<b>Freezer</b>	As compartment in fridge
<b>Hot water system</b>	220V + engine
<b>Water pressure system</b>	electrical
<b>Owners cabin</b>	French bed Bow cabin
<b>Bed length (m)</b>	2,05
<b>Wardrobe</b>	hanging/drawers/shelves
<b>Bathroom</b>	en suite
<b>Toilet</b>	en suite
<b>Toilet system</b>	electric
<b>Wash basin</b>	in the bathroom
<b>Shower</b>	en suite
<b>Extra info</b>	Seperate shower and toilet for owner
<b>Guest cabin 1</b>	double bed
<b>Bed length (m)</b>	2,00
<b>Wardrobe</b>	hanging and shelves
<b>Bathroom</b>	shared
<b>Toilet</b>	shared
<b>Toilet system</b>	electric
<b>Wash basin</b>	at the toilet
<b>Shower</b>	shared
<b>Extra info</b>	Seperayte shower and bathroom for guests
<b>Guest cabin 2</b>	bunk bed
<b>Bed length (m)</b>	2
<b>Wardrobe</b>	hanging and shelves
<b>Extra info</b>	Large storage under galley

## MACHINERY

<b>No of engines</b>	1
<b>Make</b>	Yanmar
<b>Type</b>	4JH110



# THOMASZ YACHT 412 AC

<b>HP</b>	110
<b>kW</b>	80.96
<b>Fuel</b>	diesel
<b>Maximum speed (kn)</b>	8,9
<b>Cruising speed (kn)</b>	7
<b>Engine hours</b>	750
<b>Engine cooling system</b>	freshwater heat exchanger
<b>Drive</b>	shaft
<b>Shaft seal</b>	Vovo
<b>Engine controls</b>	electrical
<b>Gearbox</b>	hydraulic
<b>Bowthruster</b>	electric Bowpro proportional 110 24 V with remote
<b>Sternthruster</b>	electric Bowpro proportional 100 24 V with remote
<b>Exhaust</b>	watercooled
<b>Thrust bearing</b>	yes
<b>Propeller type</b>	fixed
<b>Propeller blades</b>	4
<b>Propeller shaft material</b>	stainless steel
<b>Shaft lubrication</b>	water
<b>Manual bilge pump</b>	yes
<b>Electric bilge pump</b>	yes
<b>Bilge alarm</b>	yes
<b>Electrical installation</b>	12 & 24 V DC and 220 V AC
<b>Batteries</b>	4 individual groups
<b>Start battery</b>	12 V red top
<b>Service battery</b>	2 V cells 24 V 420 AH
<b>Bowthruster battery</b>	110 AH 24 V
<b>Sternthruster battery</b>	110 AH 24 V
<b>Battery monitor</b>	yes
<b>Battery charger</b>	Victron Blue smart 12 V 15 Amp for start
<b>Battery charger/inverter</b>	Victron Multiplus II 24-5000-120
<b>Diode battery combiners</b>	yes



Shorepower	with cable
Stabilizers	DMS rotating tube
Extra info	Fuel filtering system

## NAVIGATION

Compass	yes
Electric compass	Raymarine
Multi control display	Raymarine
Depth sounder	Raymarine
Log	Raymarine
Repeater	Raymarine I70
VHF	Raymarine
Autopilot	Raymarine Evolution with remote
Rudder angle indicator	yes
Radar	Raymarine Quantum
GPS	Raymarine
Plotter	Raymarine
Radar/GPS/plotter	Axiom 12 "
Electronic chart(s)	yes
AIS transponder	yes
AIS transceiver	Raymarine
Camera	Raymarine CAM 220 3 x, 1 in mast and 1 on each side of hull
Navigation lights	yes

## EQUIPMENT

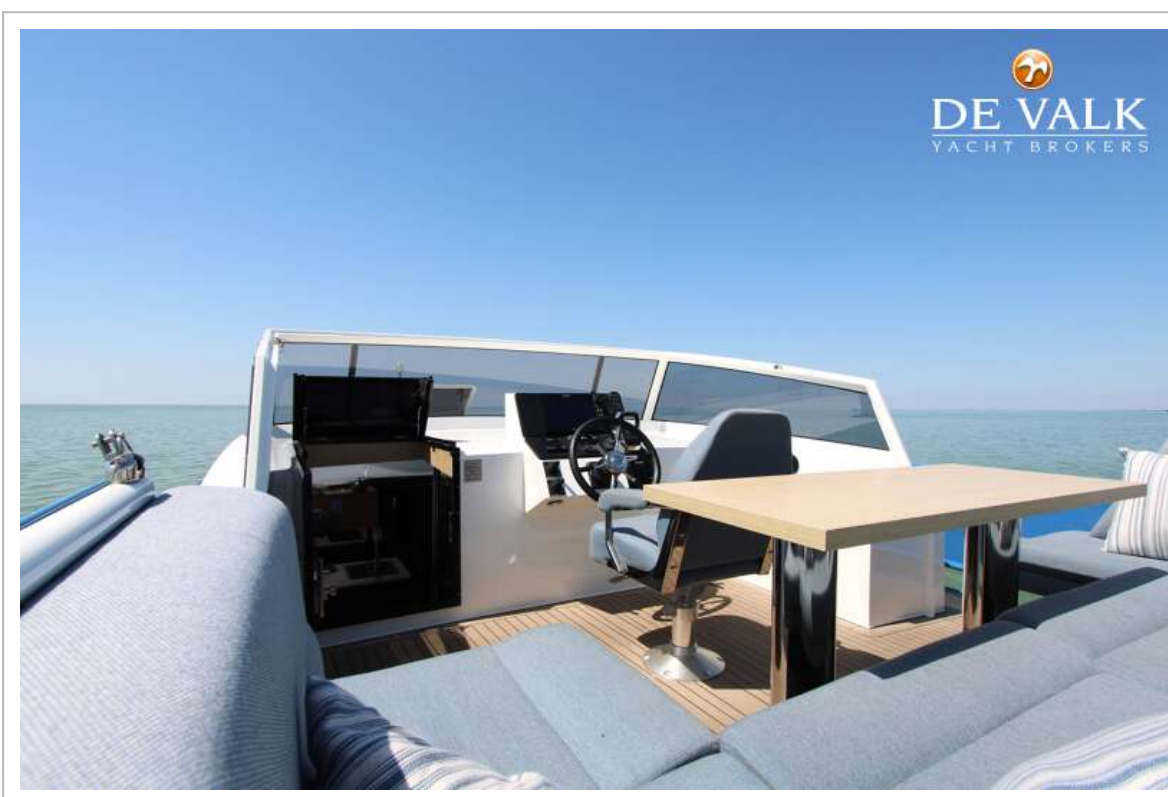
Fixed windscreen	yes
Sprayhood	yes
Cockpit cover	yes
Cockpit cushions	yes
Cockpit table	yes
Cockpit chairs	Fixed seats



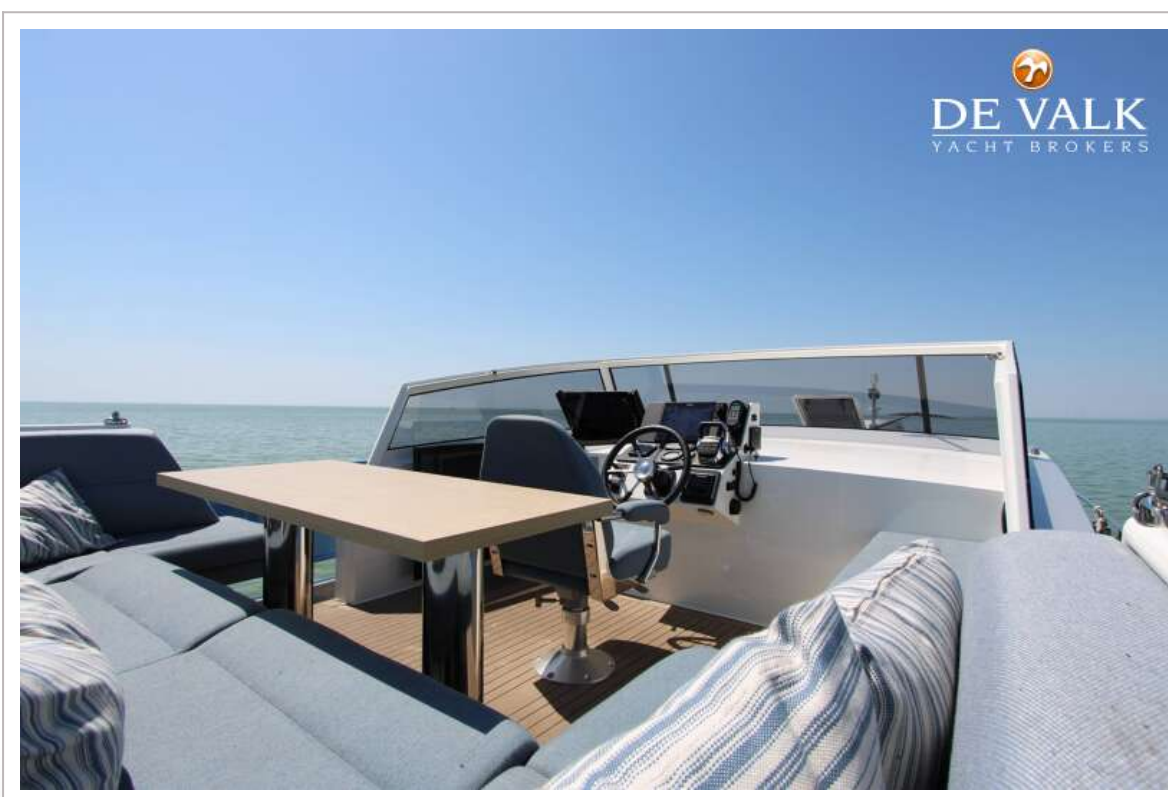
Bathing platform	With permateak
Boarding ladder	yes
Anchor	yes
Anchor chain	yes
Windlass	electrical
Sea railing	Stainless
Grab rail (superstructure)	yes
Pushpit	yes
Pulpit	yes
Wiper	2 x
Fenders	yes
Mooring lines	yes
Spare parts	Some
Tools	Some
TV	On lift
Satellite	Half automatic
Speakers in salon	yes
Speakers in cabin	yes
Clock - barometer	yes
Fire extinguisher	yes
Extra info	Wifi antenna



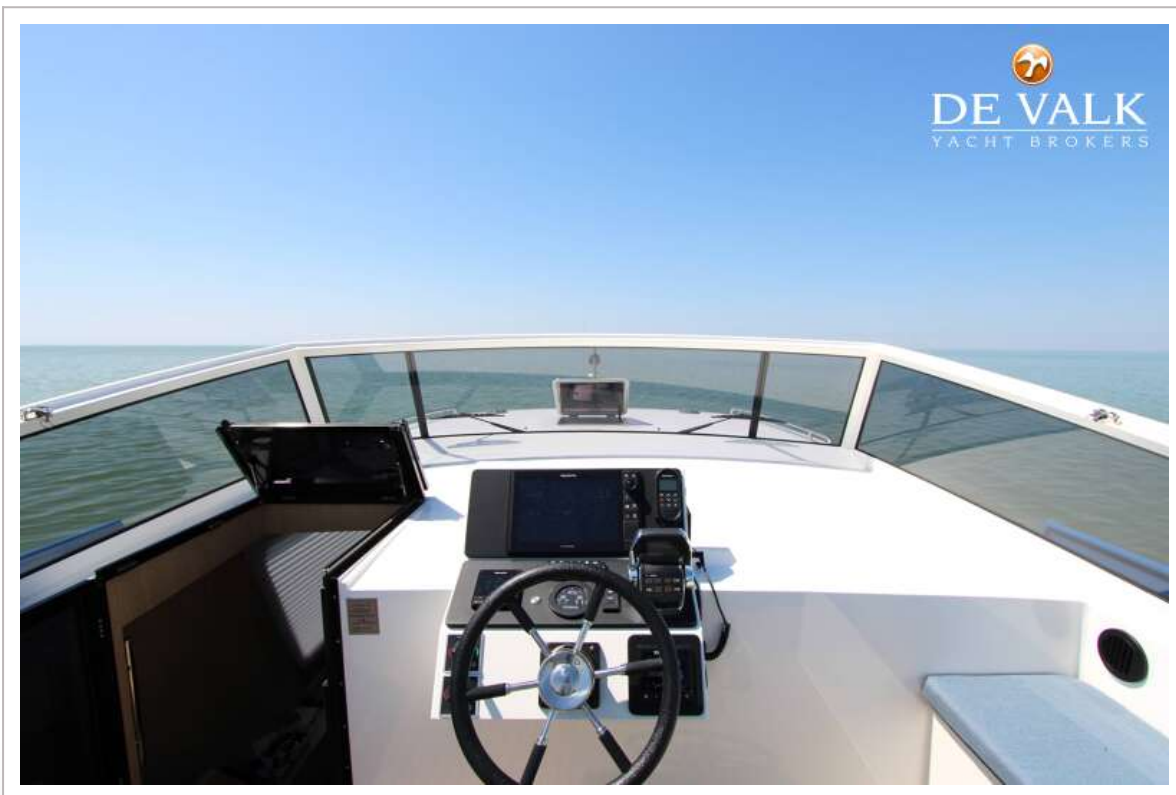
# THOMASZ YACHT 412 AC



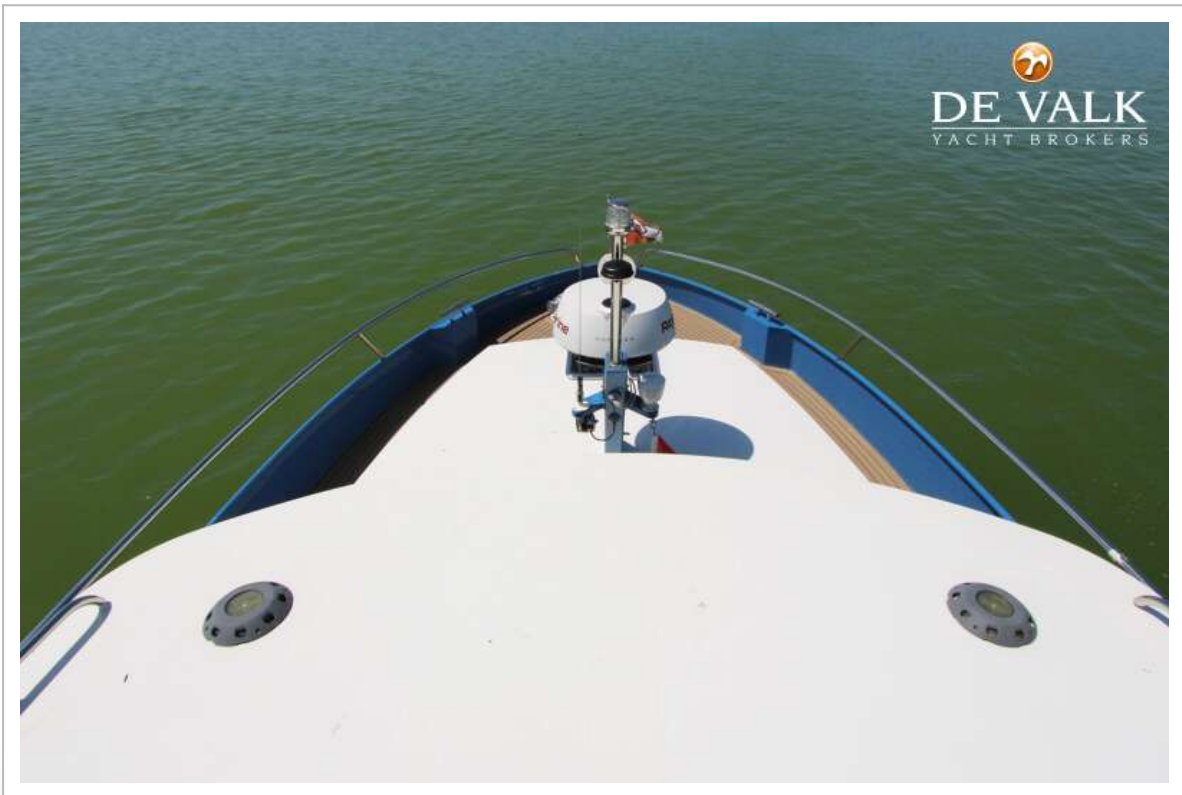
# THOMASZ YACHT 412 AC



# THOMASZ YACHT 412 AC



# THOMASZ YACHT 412 AC



# THOMASZ YACHT 412 AC



# THOMASZ YACHT 412 AC



# THOMASZ YACHT 412 AC



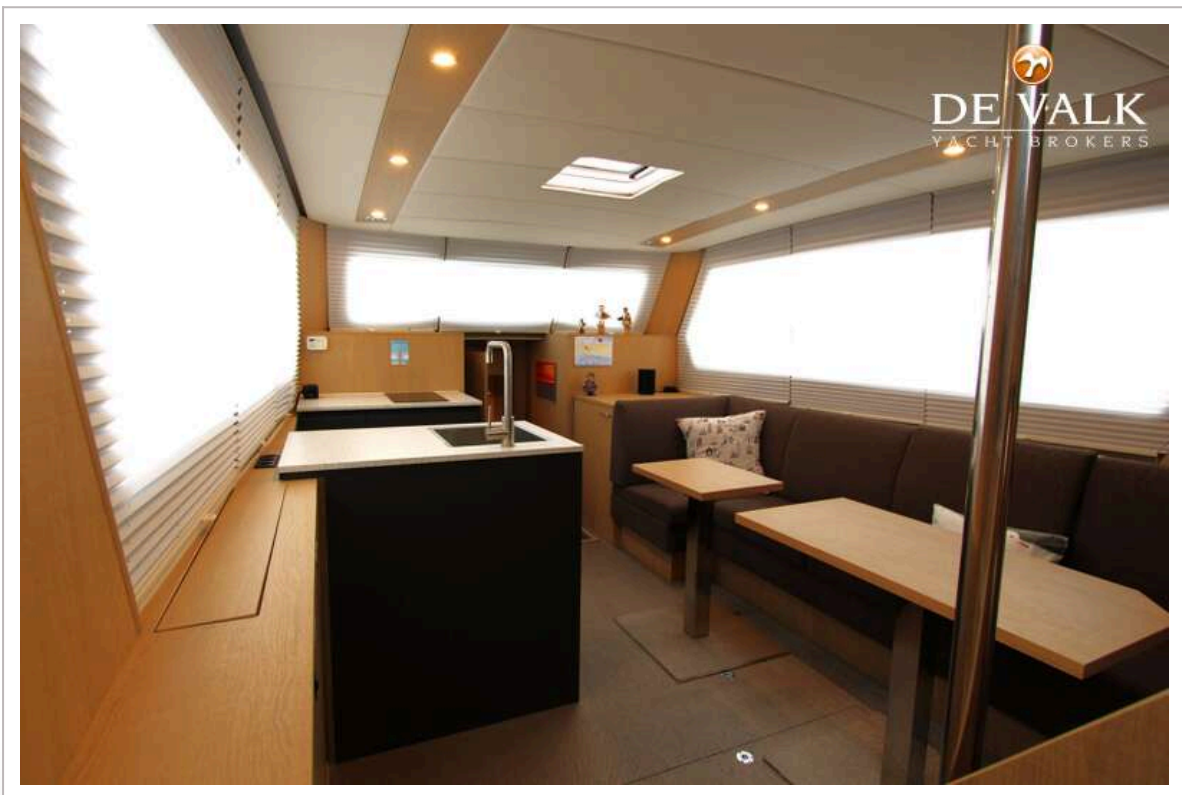
# THOMASZ YACHT 412 AC



# THOMASZ YACHT 412 AC



# THOMASZ YACHT 412 AC



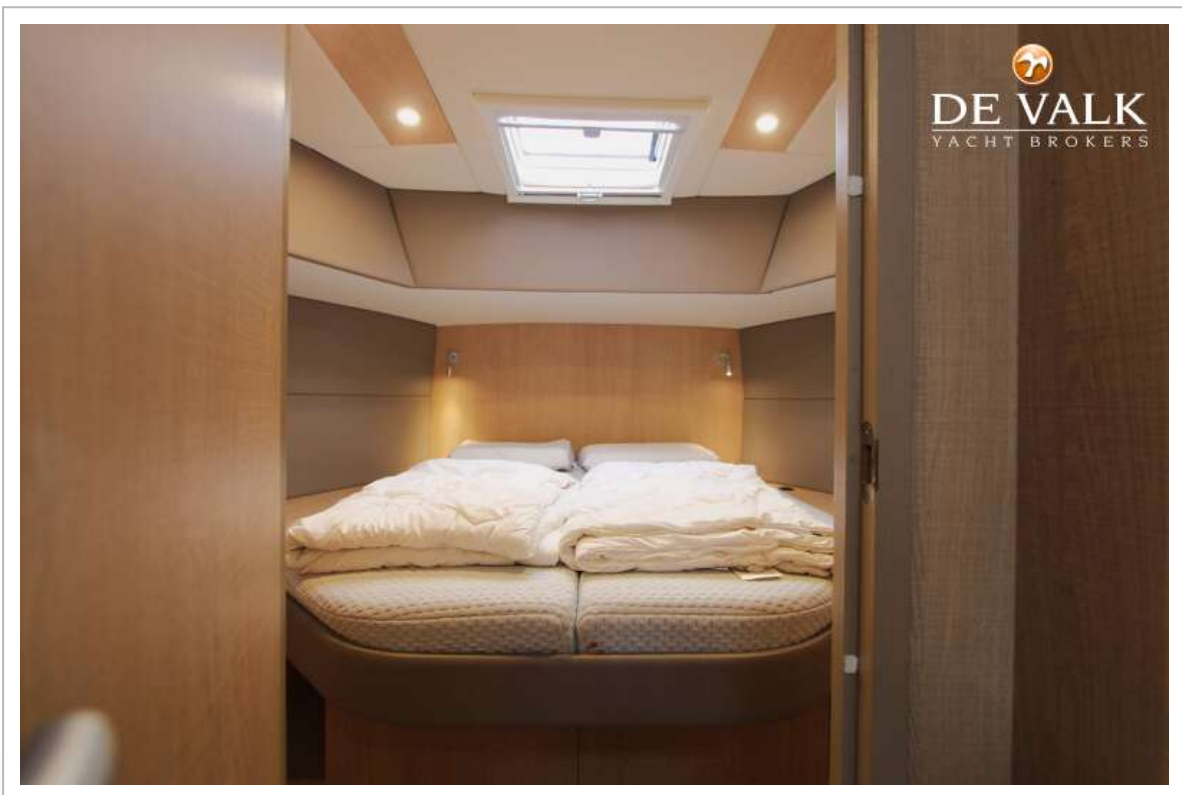
# THOMASZ YACHT 412 AC



# THOMASZ YACHT 412 AC



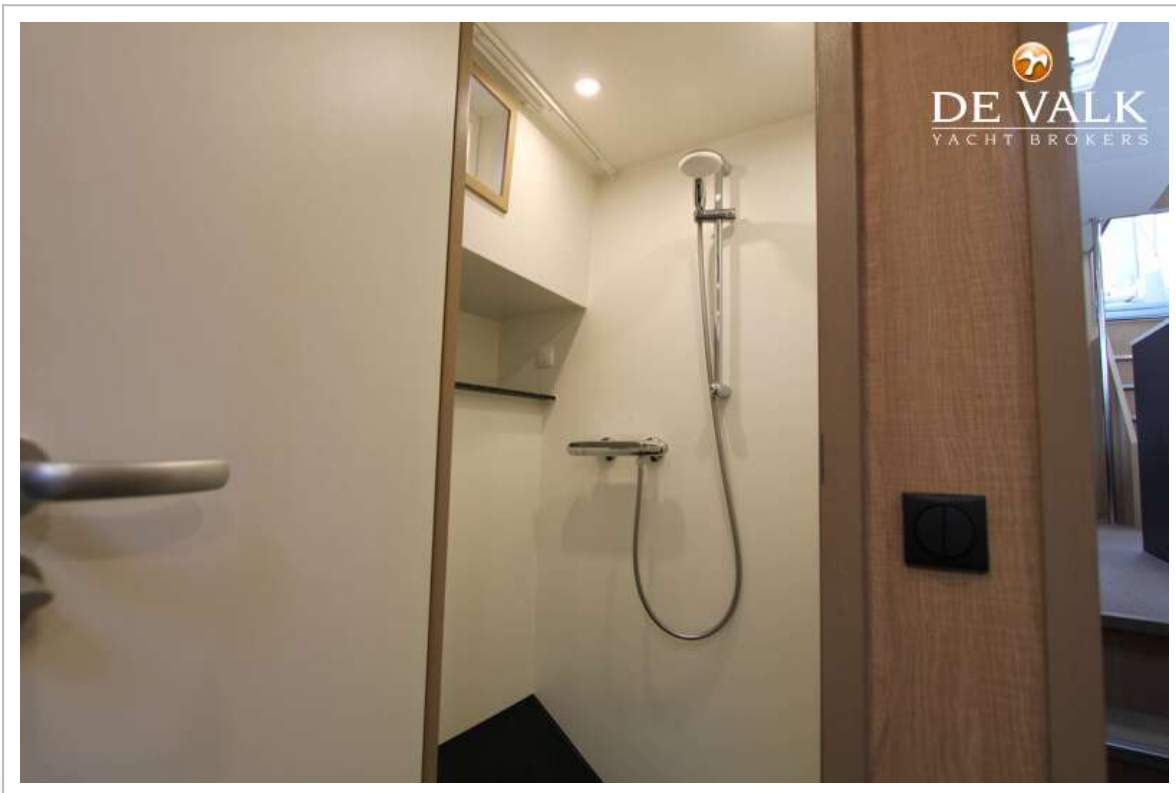
# THOMASZ YACHT 412 AC



# THOMASZ YACHT 412 AC



# THOMASZ YACHT 412 AC



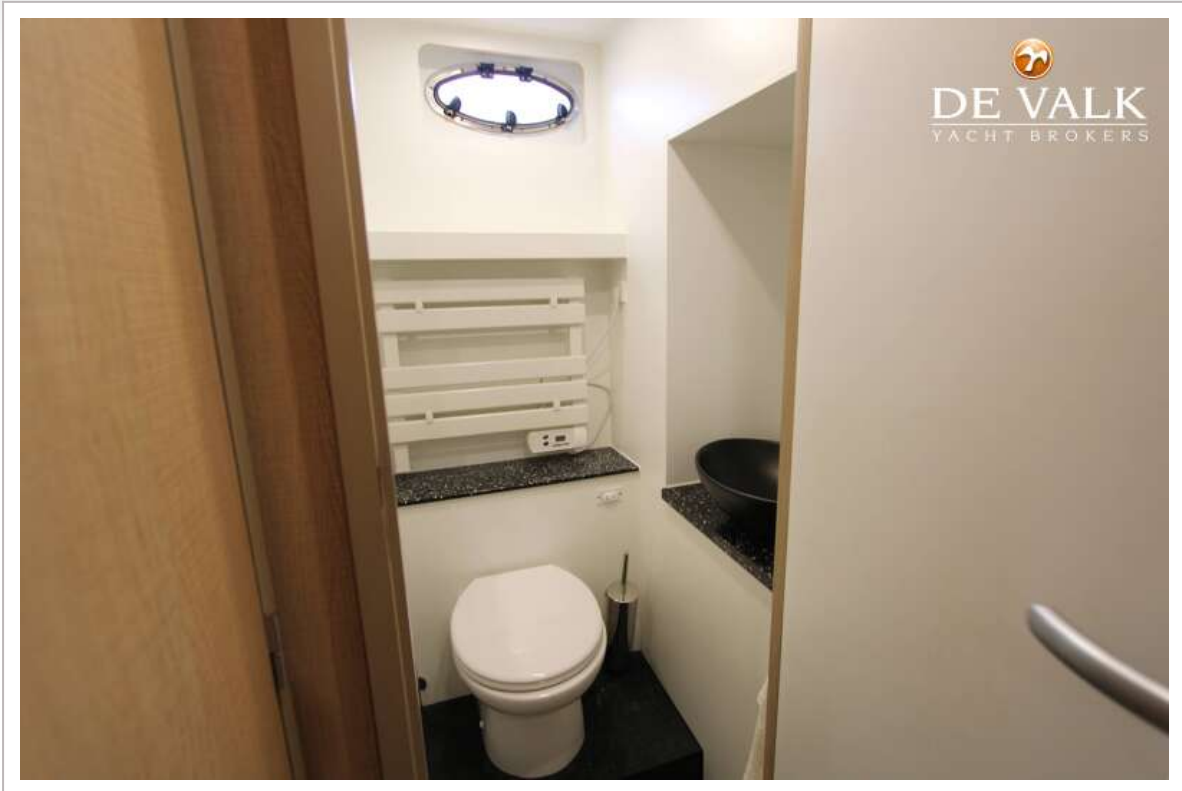
# THOMASZ YACHT 412 AC



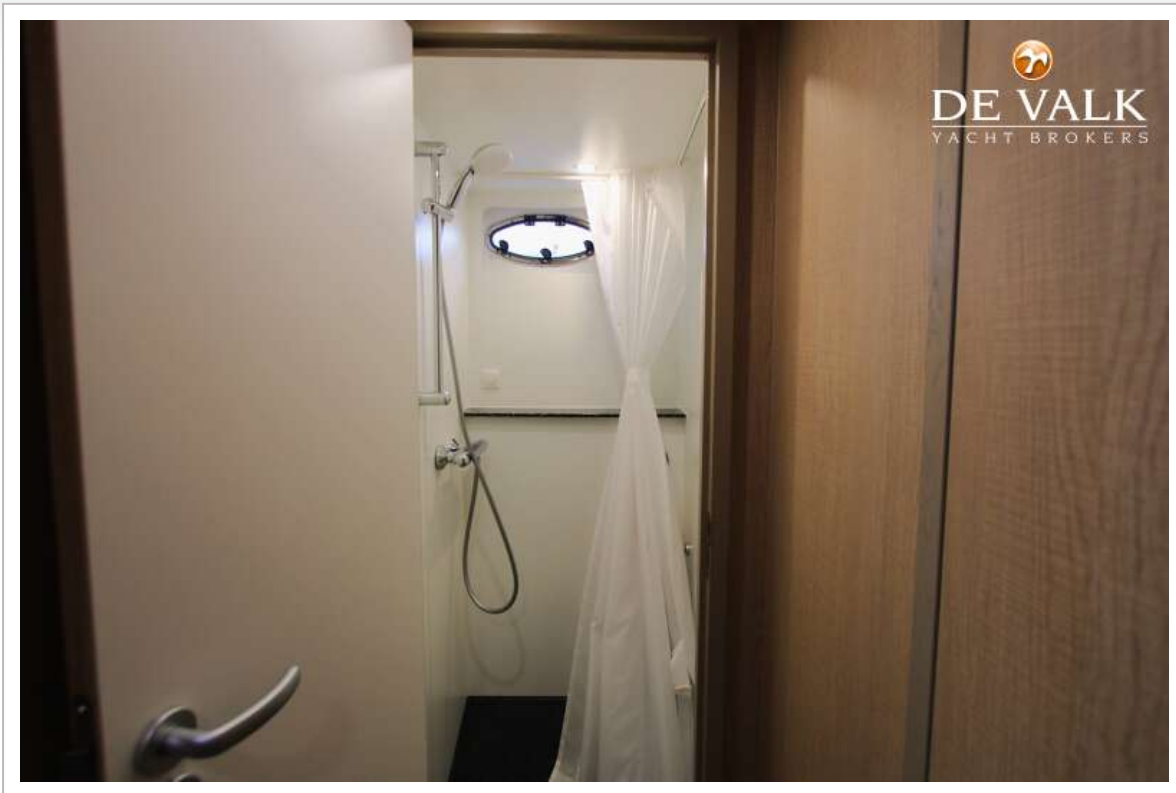
# THOMASZ YACHT 412 AC



# THOMASZ YACHT 412 AC



# THOMASZ YACHT 412 AC



# THOMASZ YACHT 412 AC

