



DE VALK
YACHT BROKERS



VIVANTE 48 KOTTER



DE VALK
YACHT BROKERS

BROKER'S COMMENTS

Vivante 48 Kotter "Elizabeth" has no equal: a graceful motor yacht with all comfort and luxury on board. Just to name a few things: Kabola central heating, Heinen & Hopman air conditioning (3x), hydraulic bow- & sternthruster, capstans, stabilizers, anchor winch (double anchor pockets). The interior is stylish, modern and made from high-quality materials. You should have seen this motor yacht, even if you intend to purchase a totally different type of motor yacht ... make an appointment for an inspection

Pieter Bosma

SPECIFICATIONS

Dimensions	14.50 x 4.40 x 1.40 (m)	Builder	Vivante Yachts Sneek / PB Behage
Built	2010	Cabins	2
Material	Steel	Berths	4
Engine(s)	1 x Steyr MO166K28 diesel	Hp/Kw	165.00 (hp), 121.44 (kw)
Asking price	€ 399.000 (VAT Paid)	Lying	elsewhere / Not at sales office

CONTACT

Sales office	De Valk Sneek	Telephone	+31 (0)515 42 80 30
Address	Zwolsmanweg 7 8606 KC Sneek NL	E-mail	sneek@devalk.nl

DISCLAIMER

These particulars are given in good faith as supplied but cannot be guaranteed.



VIVANTE 48 KOTTER

GENERAL

Model	VIVANTE 48 KOTTER
Type	motor yacht
LOA (m)	14,50
Beam (m)	4,40
Draft (m)	1,40
Air draft (m)	4,90
Air draft min (m)	3,50
Headroom (m)	2,10
Year built	2010
Builder	Vivante Yachts Sneek / PB Behage
Country	The Netherlands
Designer	PB Behage Yachtdesign
Displacement (t)	35
CE norm	B
Hull material	steel
Hull colour	antracite gray Metallic
Hull thickness (mm)	5/6
Hull shape	round-bilged
Keel type	long keel
Superstructure material	aluminium
Superstructure (mm)	4
Deck plate thickness (mm)	5
Rubbing strake	stainless steel
Deck material	steel
Deck finish	teak
Superstructure deck finish	paint
Cockpit deck finish	teak
Antifouling (year)	2025 Interspeed
Dorades	yes
Window frame	aluminium Hora



Window material	double glazing Hora
Deckhatch	Lewmar 2x
Portholes	stainless steel
Insulation	Foam plates
Mast can be lowered	manual
Fuel tank (litre)	steel 1.500
Level indicator (fuel tank)	yes
Freshwater tank (litre)	stainless steel 800
Level indicator (freshwater)	yes
Blackwater tank (litre)	stainless steel 150
Level indicator (blackwater)	yes
Blackwater tank extraction	deck extraction + pump
Wheel steering	hydraulic With remote control (Hydrosta)
Inside helm position	yes
More info on paintwork	hull and superstructure are painted in 2018

ACCOMMODATION

Cabins	2
Berths	4
Interior	walnut
Floor	wood
Aft deck	yes
Pilot house	yes
Saloon	yes
Headroom saloon (m)	2,10
Sliding roof	In pilothouse
Heating	central heating Kabola HR400 Combi
Heating 2	Electric Kickspace in pilothouse
Air-conditioning	single cycle airco Heinen en Hopman, 3 units
Chart table	yes
Aft Cabin	yes



Dinette	yes
Sliding door to cockpit	yes
Galley	yes
Countertop	corian
Sink	stainless steel
Cooker	induction Miele 4-burner
Extractor	Miele
Microwave/oven combi	Miele
Fridge	Miele 108L
Freezer	Waeco
Hot water system	220V or central heating
Water pressure system	electrical
Dishwasher	Miele
Owners cabin	French bed
Bed length (m)	2,10
Wardrobe	hanging/drawers/shelves
Bathroom	en suite
Toilet	en suite Hoses replaced 2025
Toilet system	electric
Wash basin	in the bathroom
Shower	en suite
Guest cabin 1	v-bed
Bed length (m)	2,0
Wardrobe	hanging and drawers
Bathroom	en suite
Toilet	en suite Hoses replaced 2025
Toilet system	electric
Shower	shared
Washing machine/dryer combi	Miele DT2670 SoftCare
Central vacuum cleaner	yes



MACHINERY

No of engines	1
Make	Steyr
Type	MO166K28
HP	165
kW	121.44
Fuel	diesel
Maximum speed (kn)	9
Cruising speed (kn)	8
Consumption (l/hr)	5
Engine hours	800
Engine cooling system	freshwater heat exchanger
Drive	shaft
Shaft seal	yes
Engine controls	electrical Navio 260
Gearbox	hydraulic PRM 750D2
Bowthruster	hydraulic Hydrosta Sider with remote control
Sternthruster	hydraulic Hydrosta Sider with remote control
Propeller type	fixed
Propeller blades	5
Propeller shaft material	stainless steel
Shaft lubrication	grease With automatic press
Manual bilge pump	yes
Electric bilge pump	3 x
Electrical installation	12V / 24V / 230V
Generator	silent separator MasterVolt Whisper 12KvA Ultra
Generator 2	Belt generator on main engine
Batteries	yes
Start battery	1x Optima
Service battery	Mastervolt MLI Ultra 24/6000 Lithium Ion (june 2025)
Generator battery	1x Optima



Battery monitor	Mastervolt
Battery charger	Mastervolt
Inverter	Mastervolt Mass Sine 24/5000
Shorepower	with cable And electrically operated reel
Insulation transformer	Mastervolt Galvanic Isolator
Stabilizers	fin Hydraulic by Hydrosta with Navio 301 (overhauled 2025)
Extra info	Mastervolt system switch
Extra info	Double Racor fuel filters

NAVIGATION

Electric compass	Raymarine AXIOM MFD
Depth sounder/log	Raymarine AXIOM MFD
Log	Raymarine
VHF	Raymarine
Autopilot	Navio 202 by Hydrosta
Rudder angle indicator	Raymarine AXIOM MFD
Radar	Raymarine Quantum
Radar/GPS/plotter	Raymarine AXIOM MFD
Wifi antenna	yes
Camera	Raymarine (rear view)
Navigation lights	yes
Extra info	Engine and hydraulic bow and sterntruster with Hydrosta RC

EQUIPMENT

Fixed windscreen	yes
Bimini	yes
Cockpit cushions	yes
Bathing platform	Hydraulic
Boarding ladder	stainless steel
Gangway	yes
Deck shower	yes

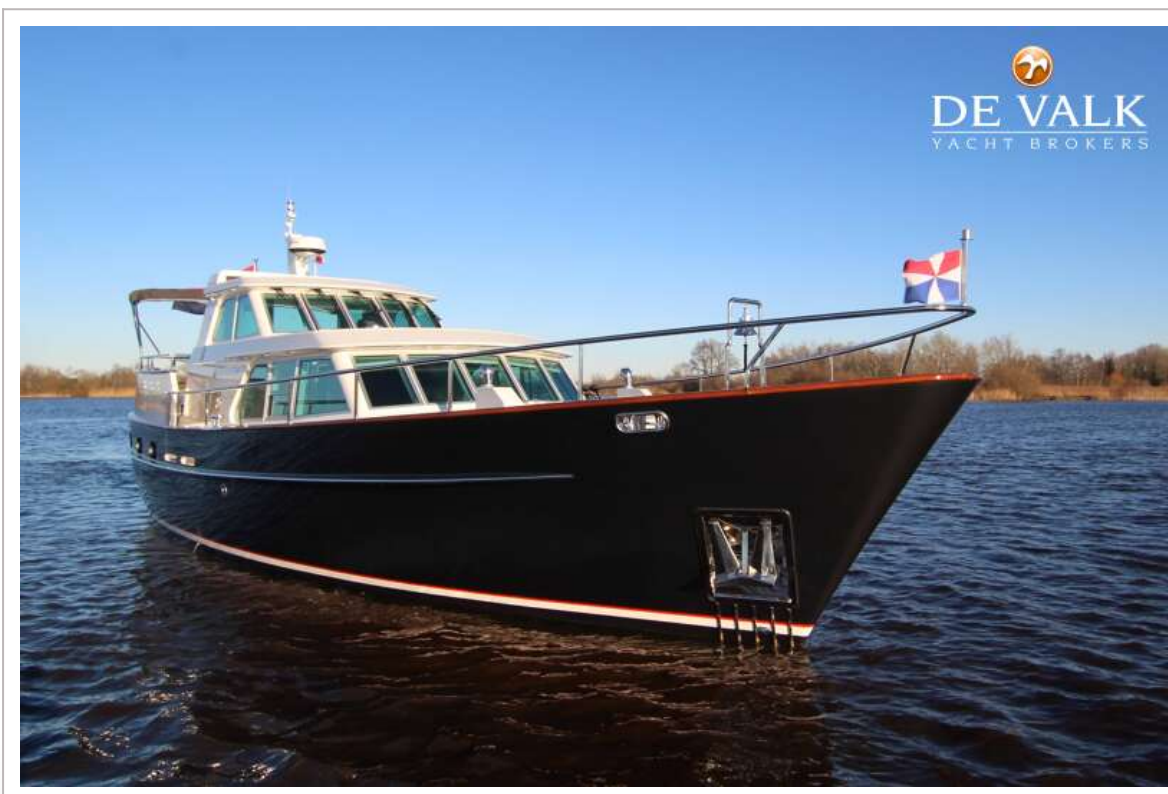


VIVANTE 48 KOTTER

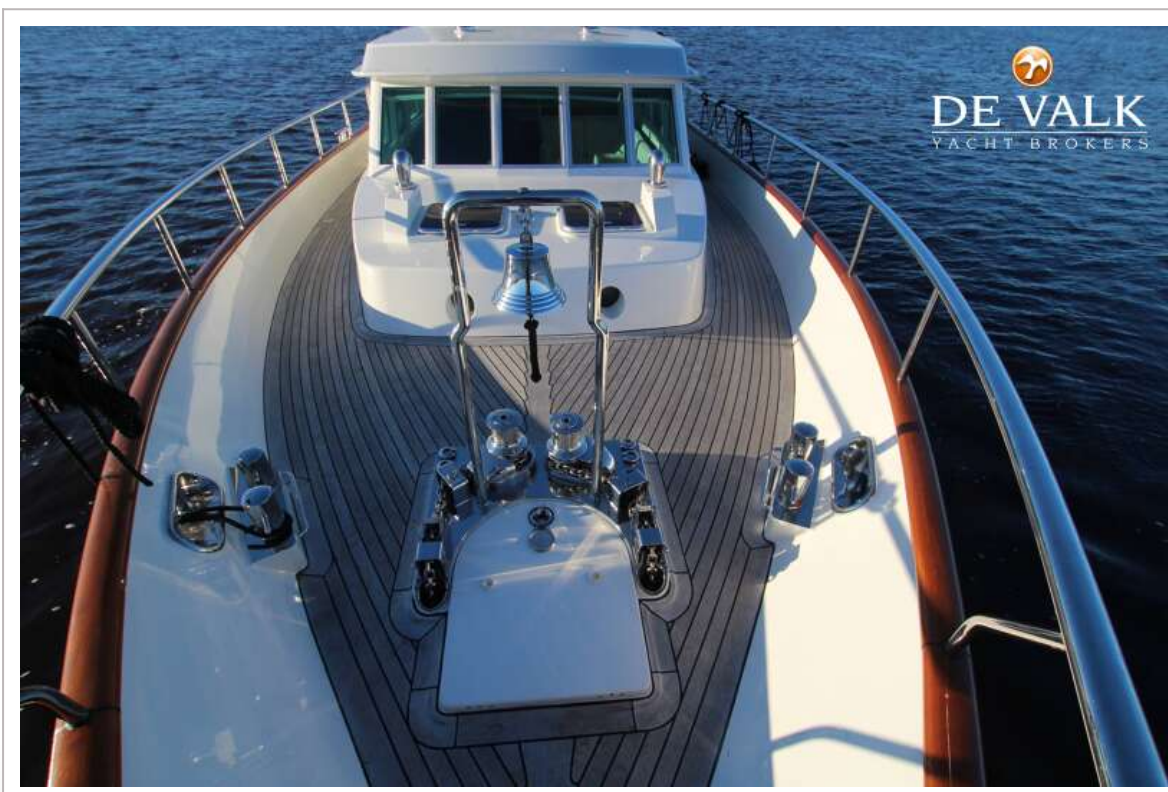
Anchor	Pool Stainless steel
Anchor chain	35 m.
Anchor 2	Pool Stainless steel
Anchor chain	35 m.
Windlass	hydraulic 2x Lewmar stainless steel.
Capstan	hydraulic 4x Lewmar stainless steel
Deck wash	yes
Davits	steel
Davits controls	manual
Sea railing	stainless steel With teak topside
Grab rail (superstructure)	stainless steel
Railing side opening gates	yes
Wiper	5 x with Exalto whiper control & wash.
Horn	air pressure
Fenders	yes
Mooring lines	yes
TV	2x flatscreen, Loewe & Philips
TV receiver	Digitenne
Radio	Auna Multimedia AV2-CD850BT
Cockpit speakers	yes
Speakers in salon	AE (Acoustic Elegance)
Speakers in cabin	yes
Clock - barometer	Barigo
Fire extinguisher	3x
Extinguisher in engine room	yes
Auto extinguisher system	In engine room



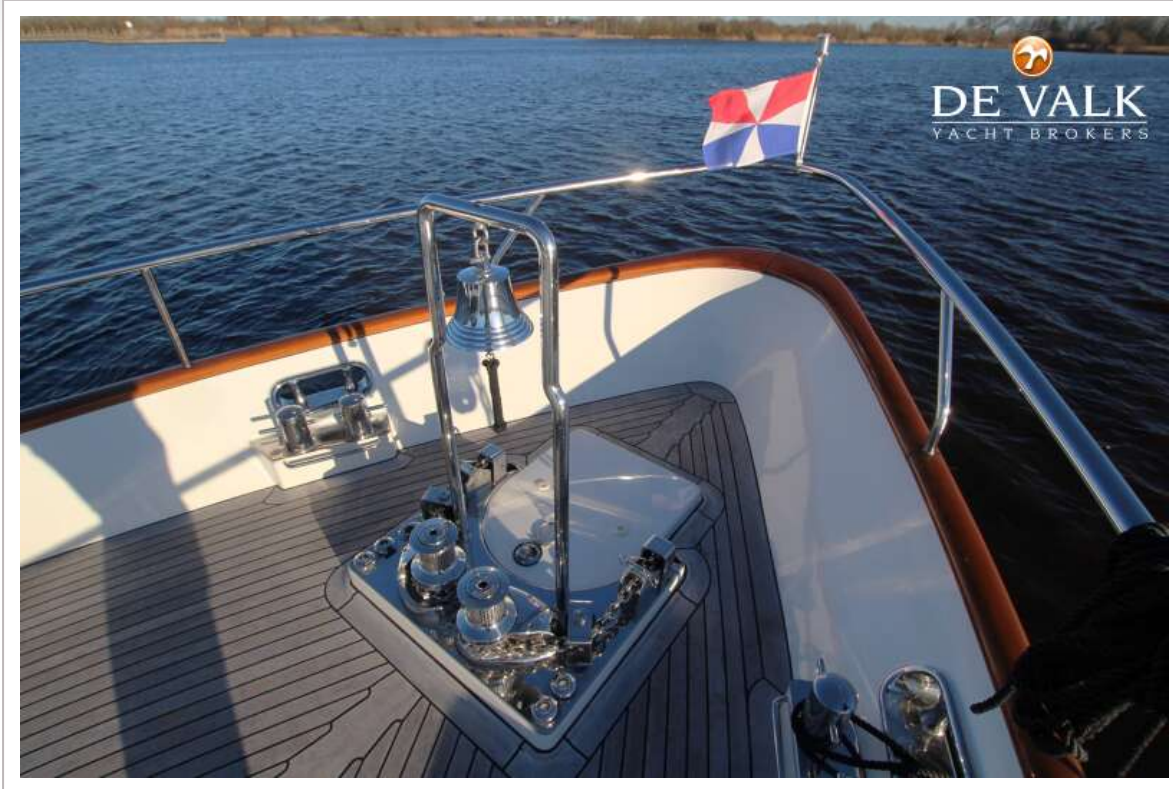
VIVANTE 48 KOTTER



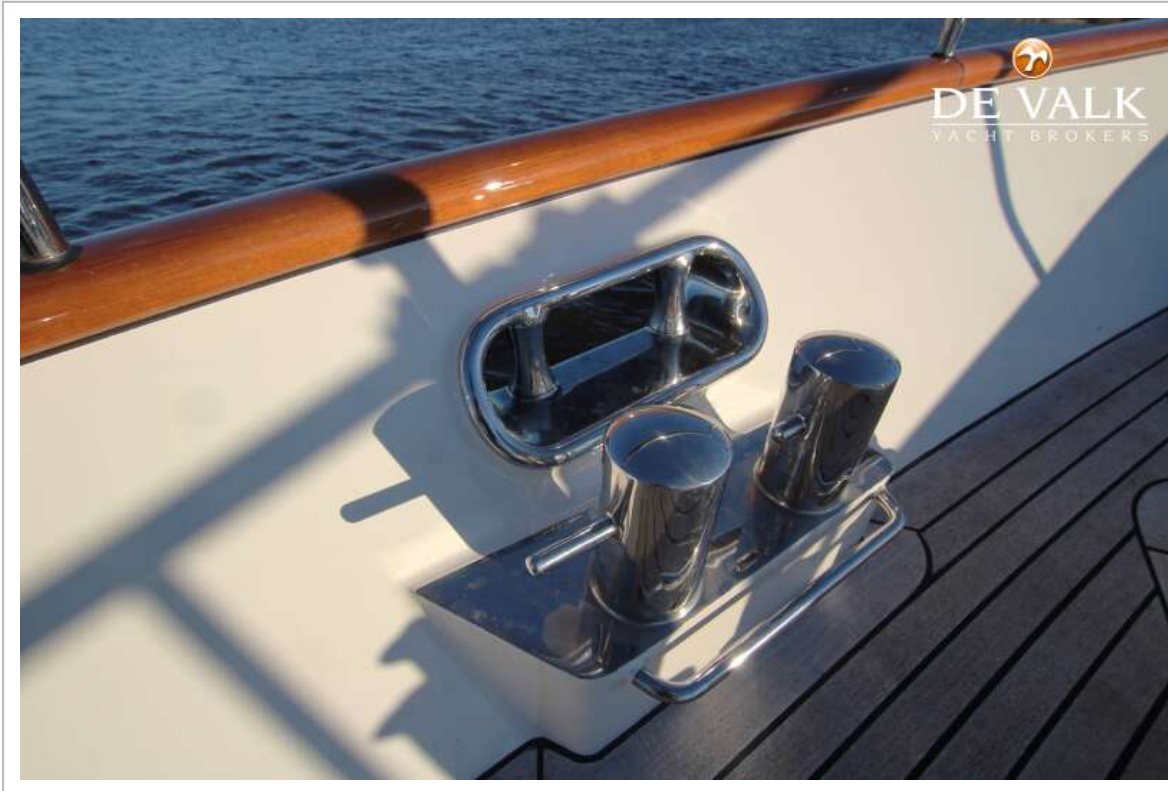
VIVANTE 48 KOTTER



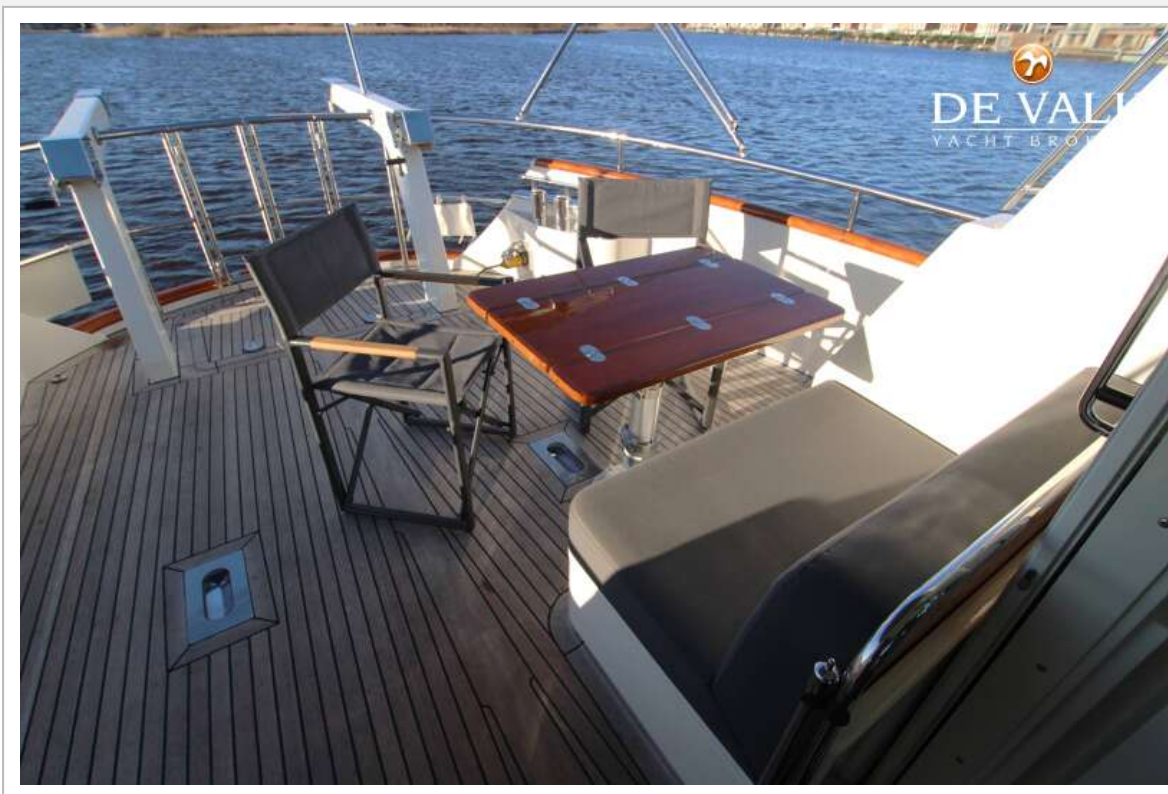
VIVANTE 48 KOTTER



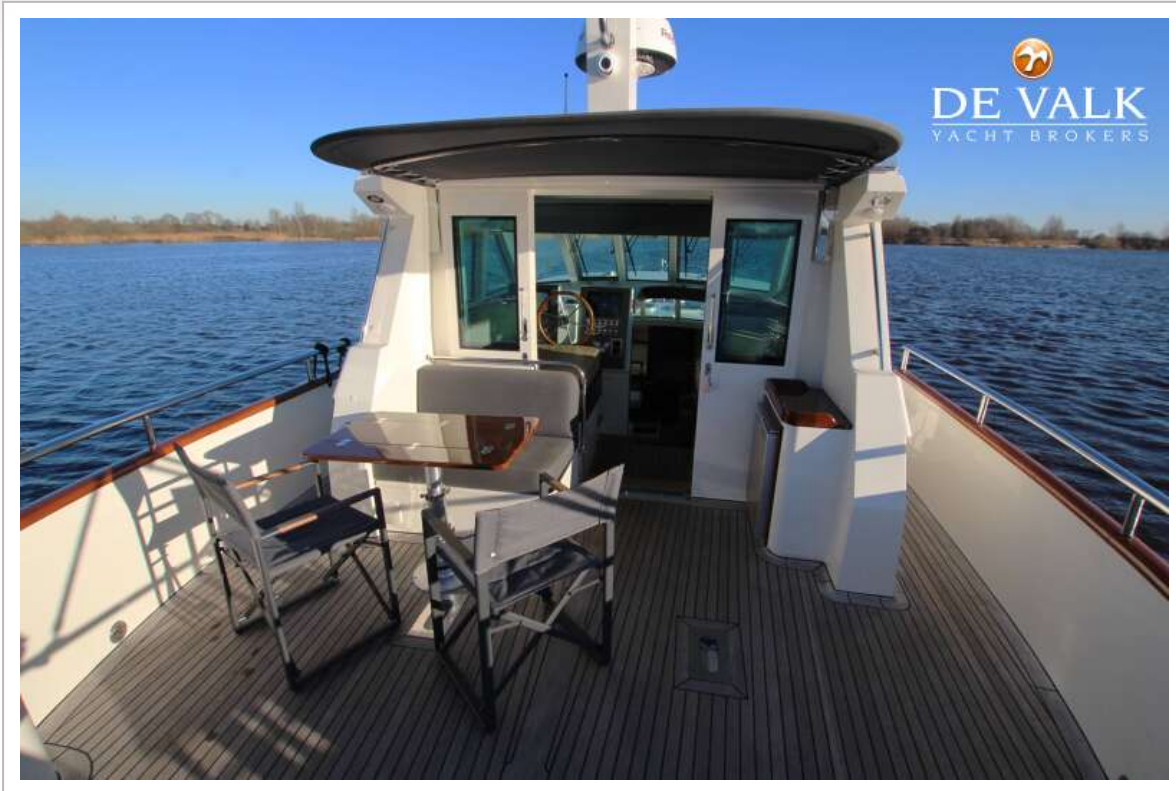
VIVANTE 48 KOTTER



VIVANTE 48 KOTTER



VIVANTE 48 KOTTER



VIVANTE 48 KOTTER



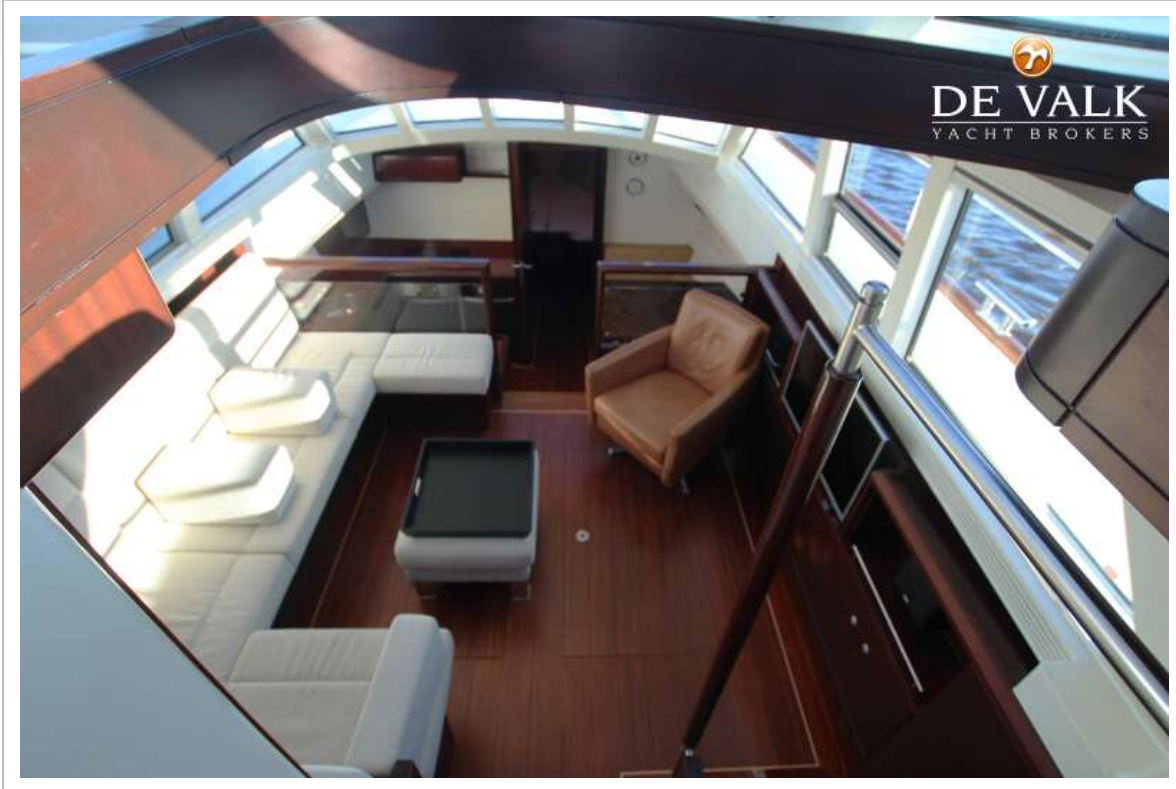
VIVANTE 48 KOTTER



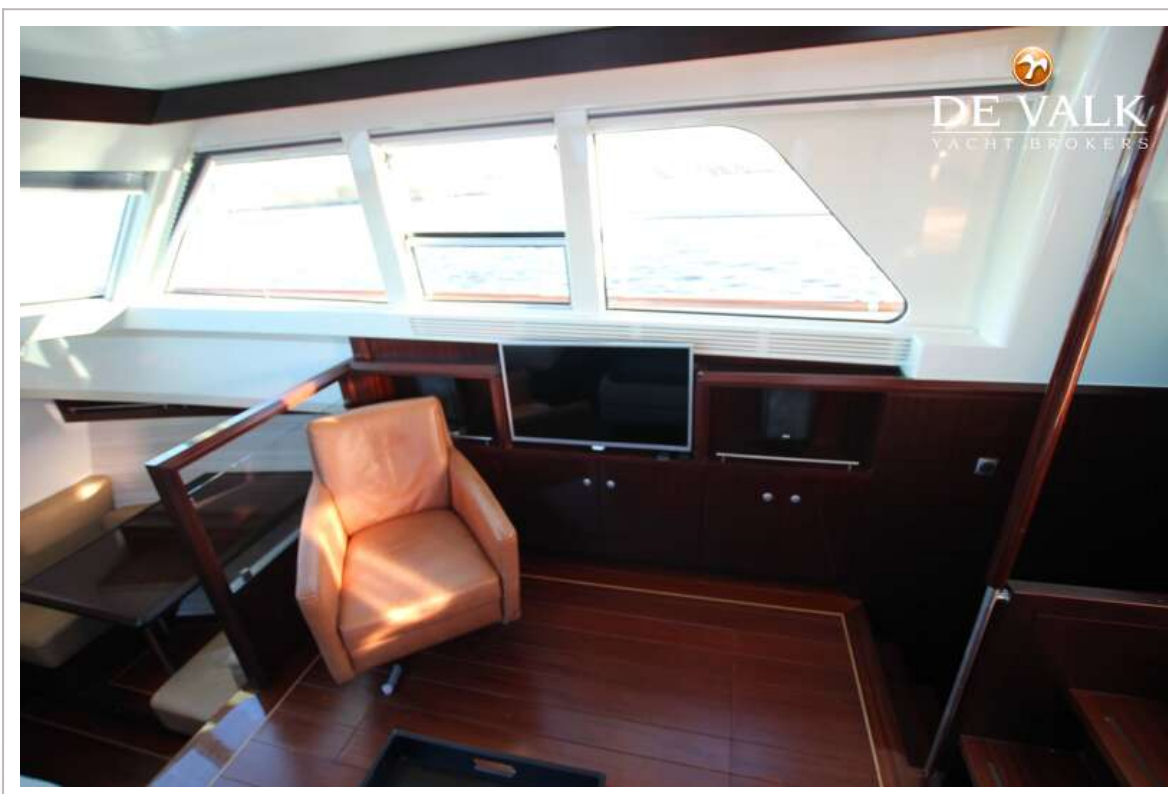
VIVANTE 48 KOTTER



VIVANTE 48 KOTTER



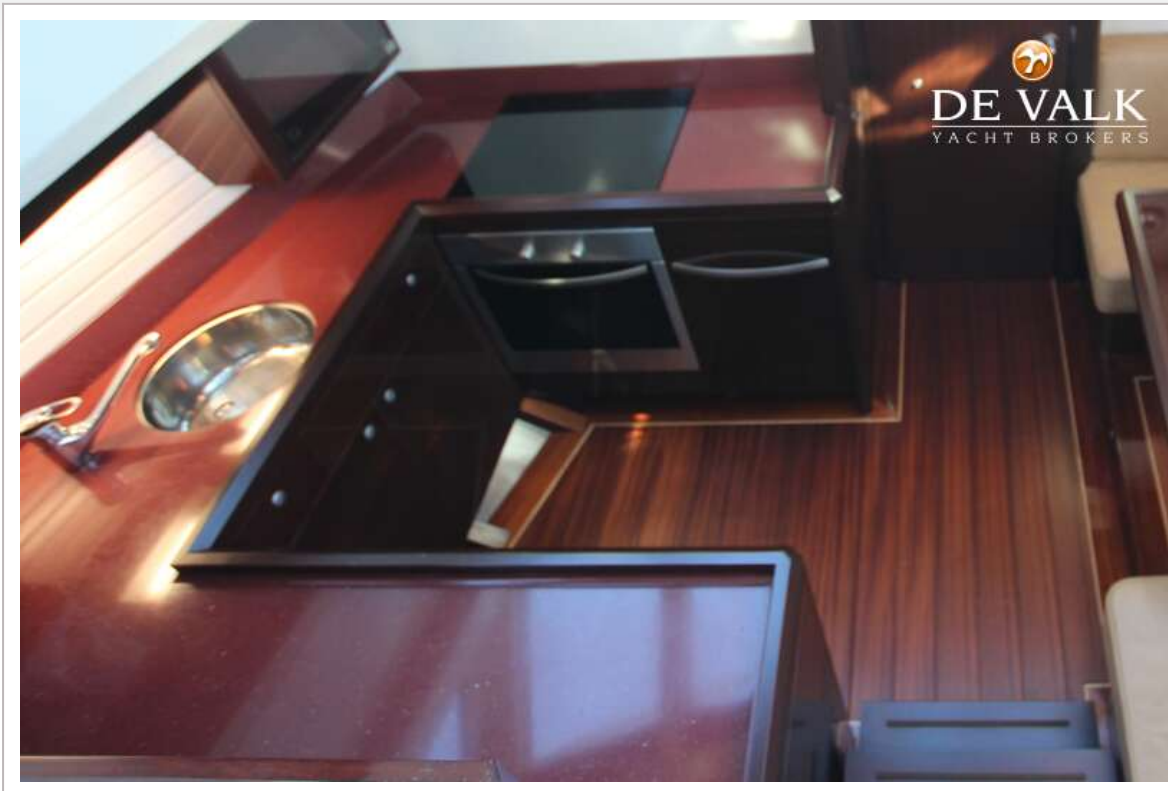
VIVANTE 48 KOTTER



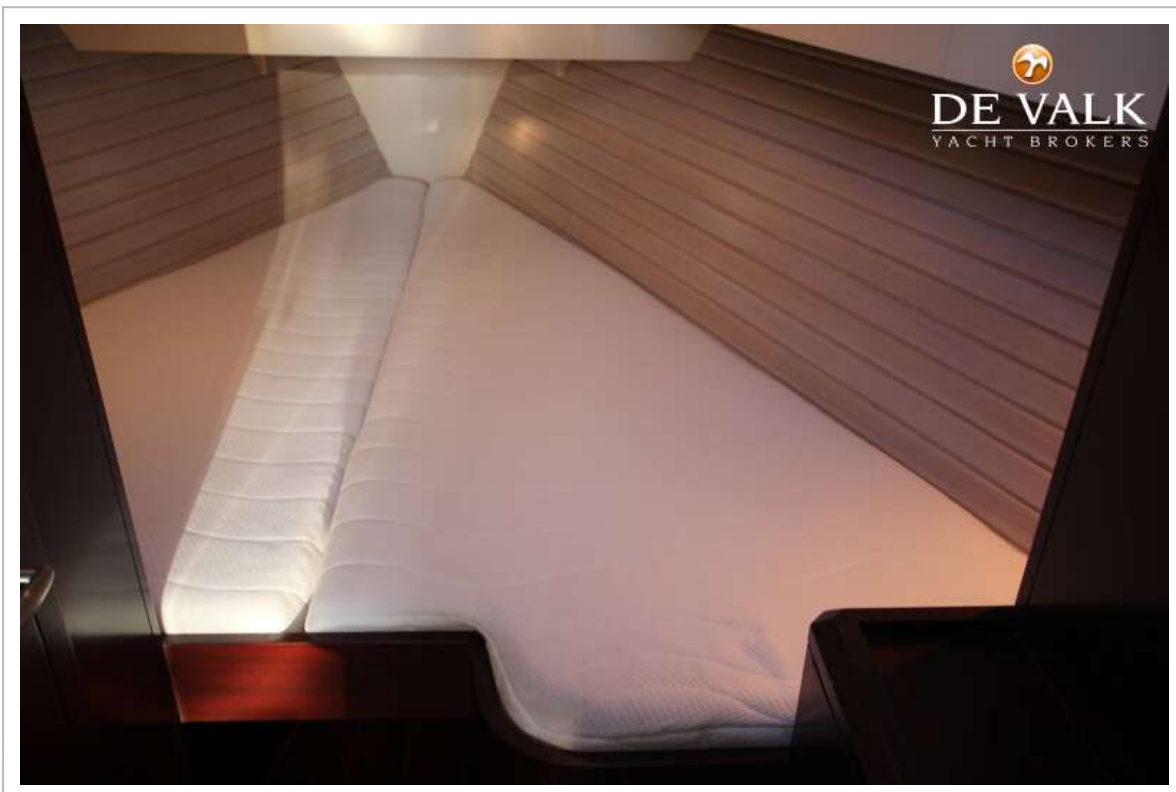
VIVANTE 48 KOTTER



VIVANTE 48 KOTTER



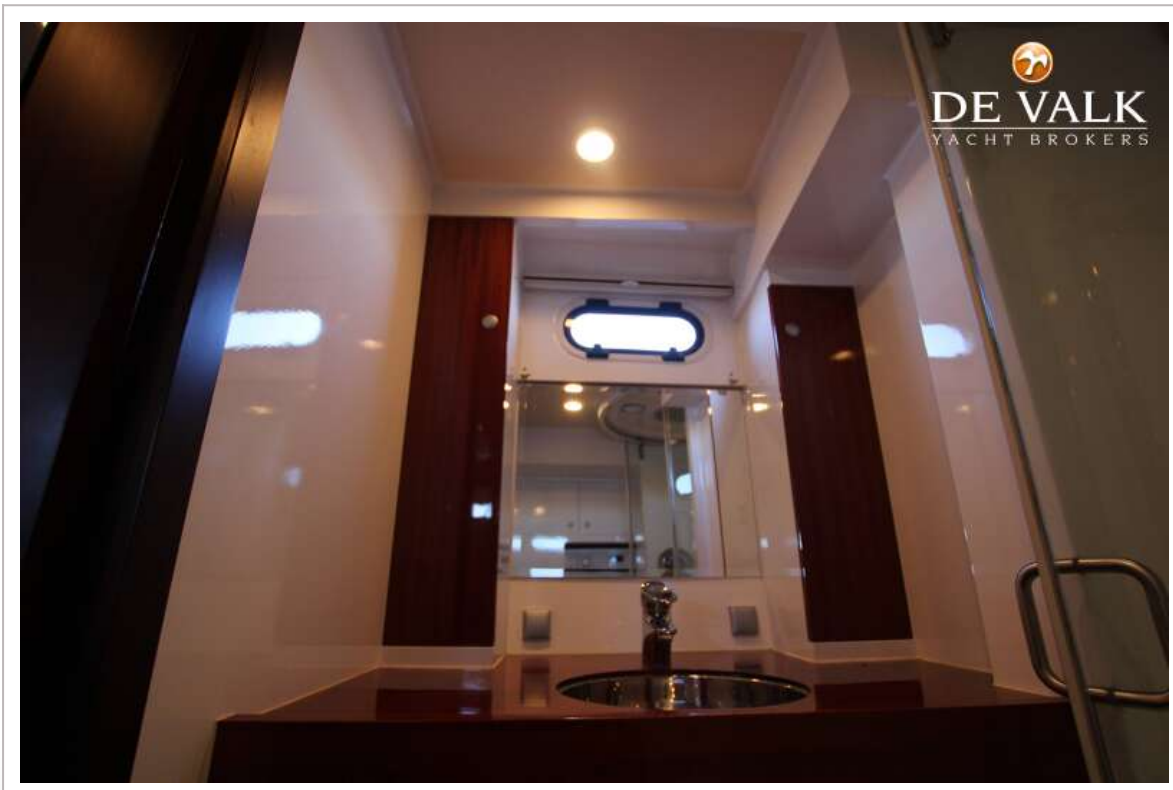
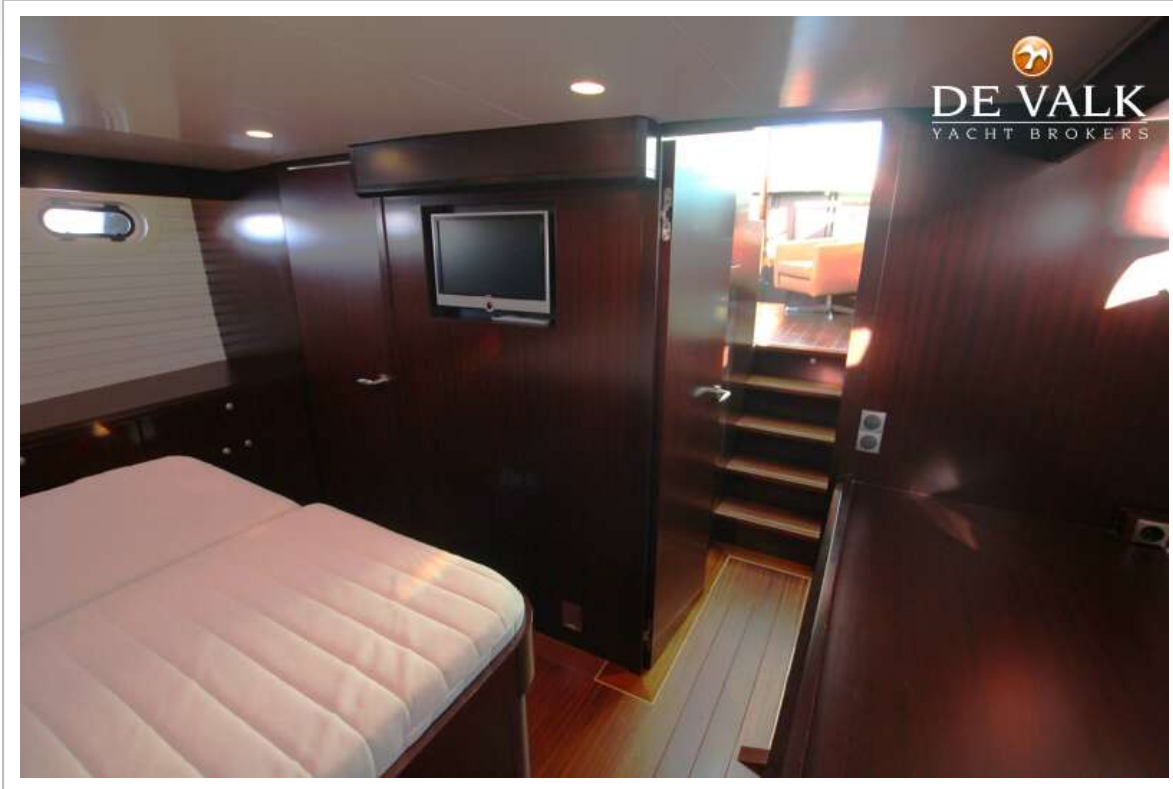
VIVANTE 48 KOTTER



VIVANTE 48 KOTTER



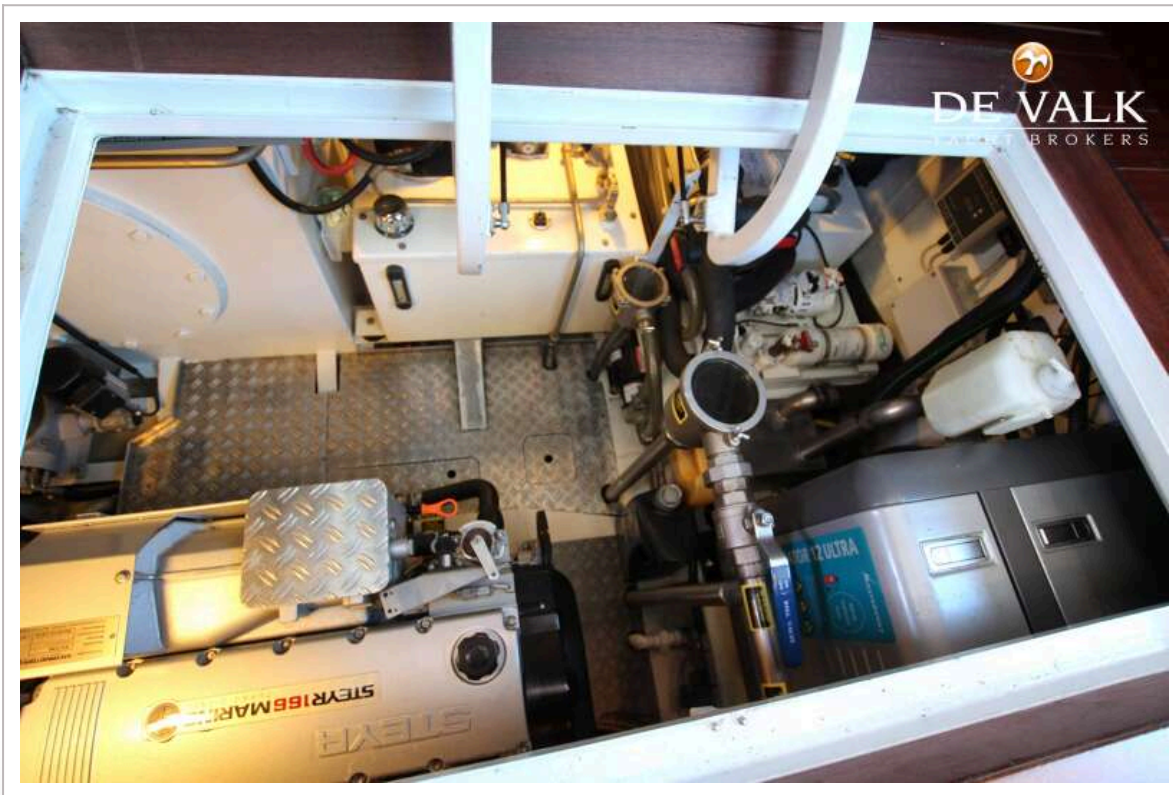
VIVANTE 48 KOTTER



VIVANTE 48 KOTTER



VIVANTE 48 KOTTER



VIVANTE 48 KOTTER

