



DE VALK  
YACHT BROKERS



## WESTERLY CONWAY 36



DE VALK  
YACHT BROKERS

# WESTERLY CONWAY 36

## BROKER'S COMMENTS

The Westerly Conway 36 Ketch is a heavily built, center-cockpit cruising yacht renowned for exceptional offshore seaworthiness and robust construction, providing a safe, comfortable, and forgiving ride in heavy weather, making it a popular choice for blue-water cruising. Despite being 36 feet, the layout provides a surprisingly roomy aft cabin and a comfortable saloon. She received a notable refit and is ready to go. Available in South Spain.

*Jörg Hellmich*

## SPECIFICATIONS

<b>Dimensions</b>	10.89 x 3.45 x 1.83 (m)	<b>Builder</b>	Westerley Marine Construction Ltd
<b>Built</b>	1975	<b>Cabins</b>	2
<b>Material</b>	GRP	<b>Berths</b>	6
<b>Engine(s)</b>	1 x Perkins 4.108 diesel	<b>Hp/Kw</b>	37.00 (hp), 27.23 (kw)
<b>Asking price</b>	€ 37.500 (VAT Exempt)	<b>Lying</b>	at sales office

## CONTACT

<b>Sales office</b>	De Valk Almeria	<b>Telephone</b>	+34 950 497 825
<b>Address</b>	Puerto Deportivo, Darsena de la Batea 42 04711 Almerimar ES	<b>E-mail</b>	almeria@devalk.nl

## DISCLAIMER

These particulars are given in good faith as supplied but cannot be guaranteed.



# WESTERLY CONWAY 36

## GENERAL

<b>Model</b>	WESTERLY CONWAY 36
<b>Type</b>	sailing yacht
<b>LOA (m)</b>	10,89
<b>LWL (m)</b>	9,22
<b>Beam (m)</b>	3,45
<b>Draft (m)</b>	1,83
<b>Air draft (m)</b>	13,50
<b>Headroom (m)</b>	1,90
<b>Year built</b>	1975
<b>Launched</b>	1975
<b>Builder</b>	Westerley Marine Construction Ltd
<b>Country</b>	United Kingdom
<b>Designer</b>	Laurent Giles
<b>Displacement (t)</b>	8
<b>Ballast (tonnes)</b>	cast iron and lead 3,25
<b>CE norm</b>	NA
<b>Hull material</b>	GRP
<b>Hull colour</b>	white
<b>Hull shape</b>	V-shaped hull
<b>Keel type</b>	fin keel Semilong
<b>Superstructure material</b>	GRP
<b>Rubbing strake</b>	wood
<b>Deck material</b>	GRP
<b>Deck finish</b>	Treadmaster
<b>Superstructure deck finish</b>	Treadmaster
<b>Cockpit deck finish</b>	teak
<b>Antifouling (year)</b>	11.2023
<b>Dorades</b>	yes
<b>Window frame</b>	aluminium
<b>Window material</b>	perspex



# WESTERLY CONWAY 36

Deckhatch	Aluminum
Fuel tank (litre)	140
Level indicator (fuel tank)	yes
Freshwater tank (litre)	155
Level indicator (freshwater)	yes
Blackwater tank (litre)	polyethylene 40
Level indicator (blackwater)	yes
Blackwater tank extraction	deck extraction + uw line
Wheel steering	chain steering
Extra info	Transom & upper 20 cm above-water hull painted with 2K PU (2023)
Extra info	Rudder rebuild with epoxy, new rudder bearings.

## ACCOMMODATION

Cabins	2
Berths	6
Layout	Centre cockpit version
Floor	wood
Saloon	yes
Headroom saloon (m)	1,90
Heating	diesel ducted hot air Eberspacher Airtronic 4 kW
Heating 2	electric 220V Thermobox FK In owner's cabin
Chart table	yes
Aft Cabin	Owner's cabin
Convertible berth	In saloon
Galley	Long shape
Countertop	wood
Sink	stainless steel
Cooker	calor gas Plastimo Neptune 2000 - 2 burner
Oven	yes
Gas alarm	yes



# WESTERLY CONWAY 36

<b>Fridge</b>	Engel (12/230V)
<b>Freezer</b>	Compartment in fridge
<b>Hot water system</b>	220V + engine Boiler (20L.)
<b>Water pressure system</b>	electrical Jabsco
<b>Manual and/or foot pump</b>	yes
<b>Hot water tap</b>	yes
<b>Crockery</b>	yes
<b>Owners cabin</b>	double bed Aft
<b>Bed length (m)</b>	2,25
<b>Wardrobe</b>	hanging and shelves
<b>Toilet</b>	shared
<b>Toilet system</b>	vacuum Lavac
<b>Wash basin</b>	at the toilet
<b>Shower</b>	shared
<b>Extra info</b>	All upholstery replaced in 2023
<b>Guest cabin 1</b>	v-bed Forward
<b>Bed length (m)</b>	1,80
<b>Wardrobe</b>	hanging and shelves
<b>Extra info</b>	All upholstery replaced in 2023

## MACHINERY

<b>No of engines</b>	1
<b>Make</b>	Perkins
<b>Type</b>	4.108
<b>HP</b>	37
<b>kW</b>	27.23
<b>Fuel</b>	diesel
<b>Year installed</b>	1975
<b>Year of overhaul</b>	May 2022 (complete rebuild by professional company)
<b>Maximum speed (kn)</b>	6
<b>Cruising speed (kn)</b>	5



# WESTERLY CONWAY 36

Range (nm)	280
Engine hours	459
Engine cooling system	freshwater heat exchanger
Drive	shaft
Shaft seal	New 04.2023
Engine controls	bowden cable
Gearbox	mechanical Nicor TMP Type 1200 MK. 11
Engine controls	bowden cable
Exhaust	watercooled
Propeller type	fixed
Propeller blades	3
Propeller shaft material	stainless steel
Shaft lubrication	grease
Manual bilge pump	yes
Electric bilge pump	yes
Bilge alarm	yes
Electrical installation	In 2023 complete rebuild
Start battery	12V / 145 Ah Acid
Service battery	3 x 12V / 100 Ah LifePro4
Battery monitor	yes
Battery charger/inverter	12V / 40 Amp with 2000W inverter
Solar panel	2 x 175 Watts Renogy
Diode battery combiners	yes
Shorepower	with cable 230V
Extra info	2 x 40A MPTT solar regulators

## NAVIGATION

Compass	Sestrel
Electric compass	Simrad RC36
Multi control display	Simrad IS 12 Combi
Depth sounder	Simrad IS 12 Combi



# WESTERLY CONWAY 36

<b>Windset</b>	Simrad IS 12 Combi
<b>VHF</b>	Simrad RS82
<b>Autopilot</b>	Simrad AC20 on Simrad AP16 controller
<b>Rudder angle indicator</b>	Simrad
<b>Plotter/GPS</b>	Simrad NSS 8
<b>Wifi antenna</b>	NMAE 183 - NMAE 2000
<b>Electronic chart(s)</b>	yes
<b>AIS transponder</b>	yes
<b>AIS transceiver</b>	Type B
<b>EPIRB</b>	MC Murdo G8 AIS & GNSS
<b>Navigation lights</b>	LED
<b>Extra info</b>	SIMRAD AC26 Remote Control

## EQUIPMENT

<b>Sprayhood</b>	yes
<b>Cockpit cushions</b>	yes
<b>Bathing platform</b>	Retractable
<b>Boarding ladder</b>	stainless steel
<b>Deck shower</b>	H&c (on platform)
<b>Anchor</b>	Rocna 15 kg (2023)
<b>Anchor chain</b>	60 m (8mm) galvanized
<b>Anchor 2</b>	6kg
<b>Anchor chain</b>	5 m (galvanized)
<b>Windlass</b>	electrical Vetus Ajax (incl. remote control)
<b>Dinghy</b>	inflatable Bombard AX2 (used)
<b>Outboard</b>	Suzuki DF 2.5
<b>Outboard support</b>	yes
<b>Sea railing</b>	wire
<b>Grab rail (superstructure)</b>	teak
<b>Pushpit</b>	yes
<b>Pulpit</b>	yes



# WESTERLY CONWAY 36

Life raft	container AWN Offshore
Life raft (pers)	6
Last life raft survey	03.2021
Lifejackets	yes
Safety lines on deck	yes
Radar reflector	yes
Fenders	yes
Mooring lines	yes
Spare parts	yes
Tools	yes
Cockpit speakers	yes
Fire extinguisher	4 units
Extra info	Indirect interior lighting, 4 x 220 V + 4 x USB outlets (65W)
Extra info	New electric panel, Mast wiring, engine wiring
Extra info	Gas (ITV) checked 04.2026

## RIGGING

Rigging	ketch
Standing rigging	wire Survey in 01.2026 (age unknown )
Brand mast	Kemp
Material mast	aluminium
Spreaders	yes
Mast lowering system	yes
Mainsail	Dacron (2 reefs) in decent conditions
Mainsail cover	yes
Battcars	yes
Mizzen	Dacron, in decent conditions
Mizzen staysail	Dacron, in decent conditions
Jib I	Hanks, in good conditions
Jib II	Hanks, in good conditions
Genoa	Dacron, in good conditions



# WESTERLY CONWAY 36

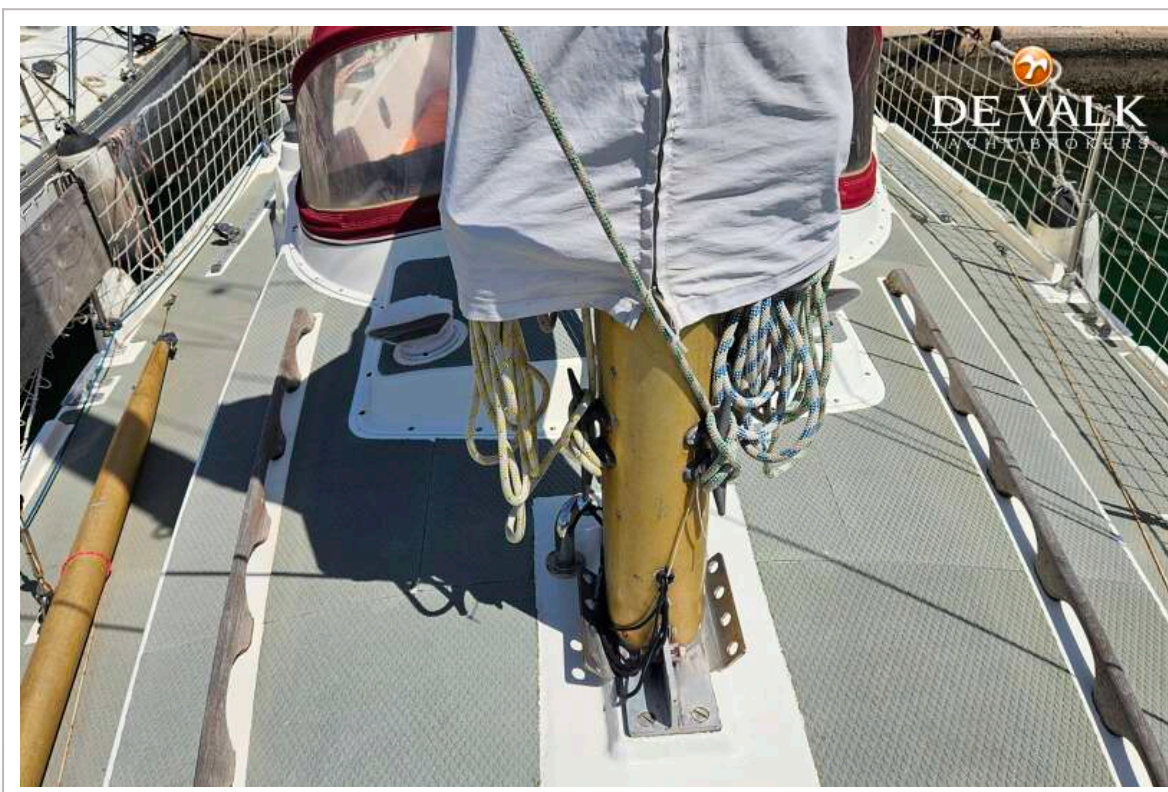
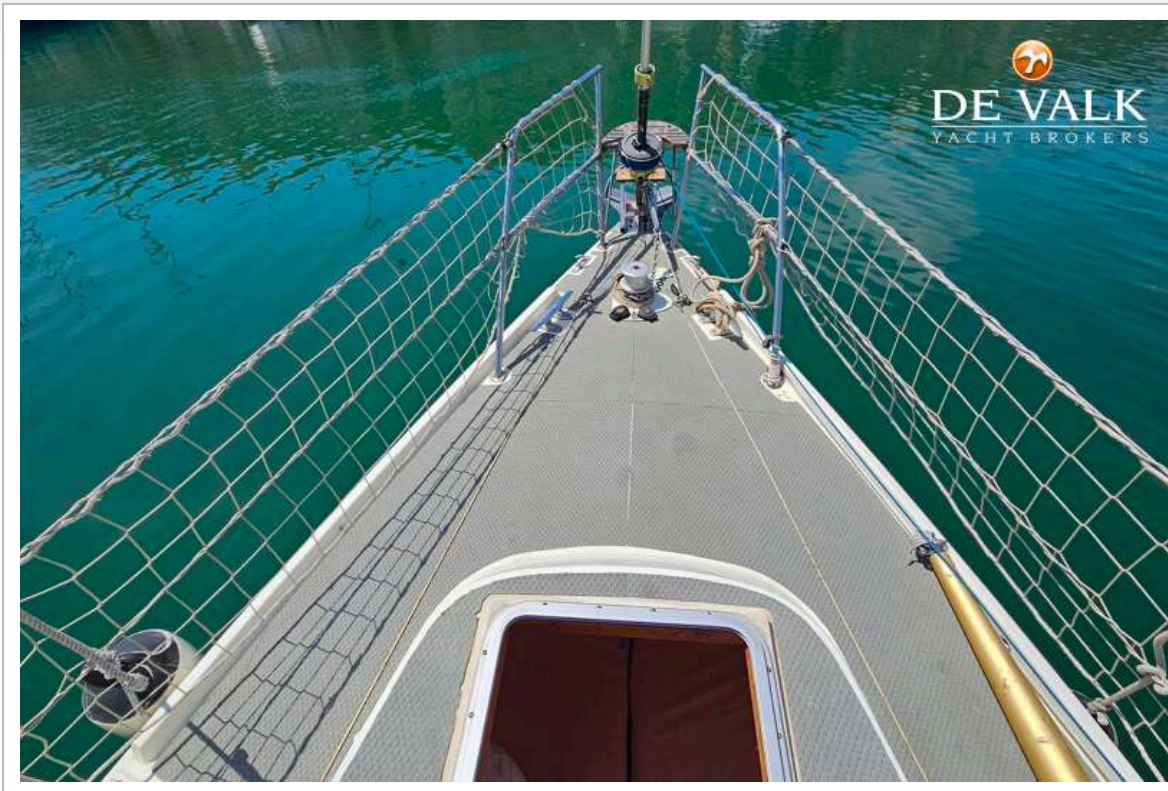
<b>Genoa I</b>	Dacron, in good conditions
<b>Genoa furler</b>	Profurl C320
<b>Removable innerforestay</b>	yes
<b>Reefing System</b>	slabreefing 2 reefs
<b>Boomvang</b>	tackle
<b>Primary sheet winch</b>	2 x Lewmar 44 ST 2 SP
<b>Secondary sheet winch</b>	2 x Lewmar 43 2 SP
<b>Halyard winches</b>	Lewmar (on mast)
<b>Reefing winch</b>	Lewmar (on mast)
<b>Spi-pole</b>	aluminium On deck
<b>Extra info</b>	Running rigging (2023), diverted to cockpit



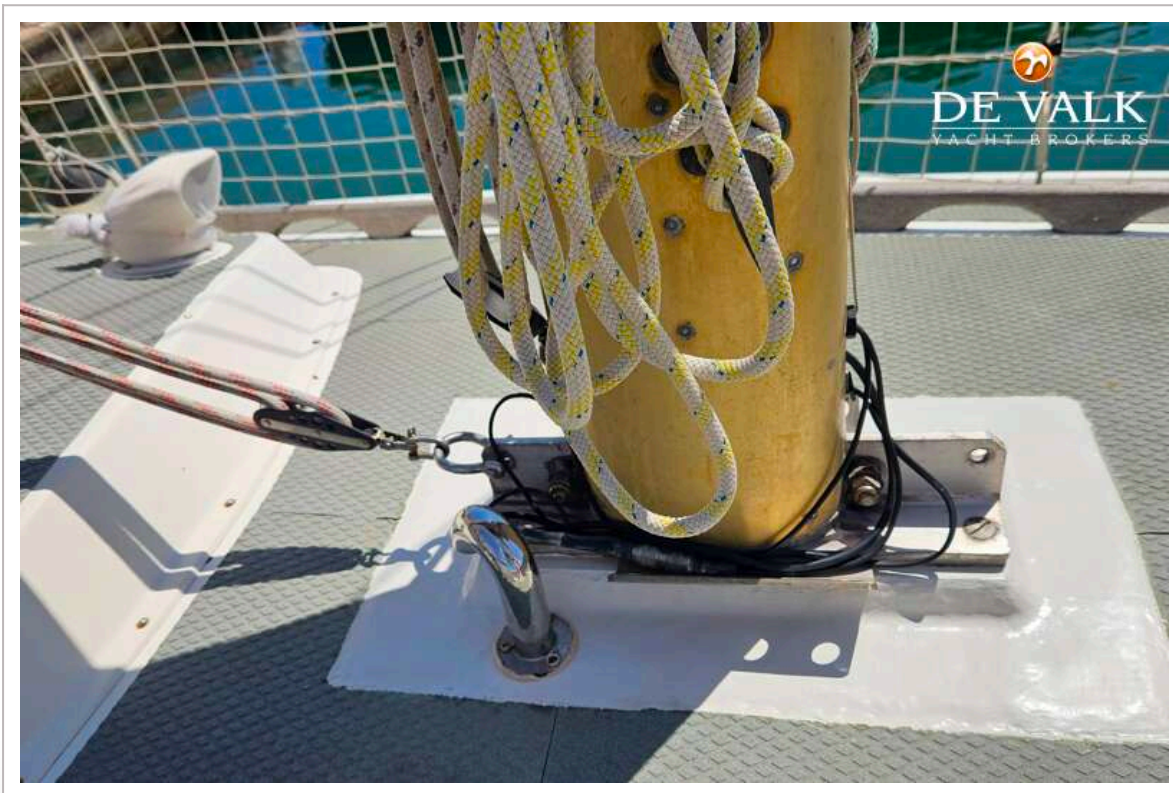
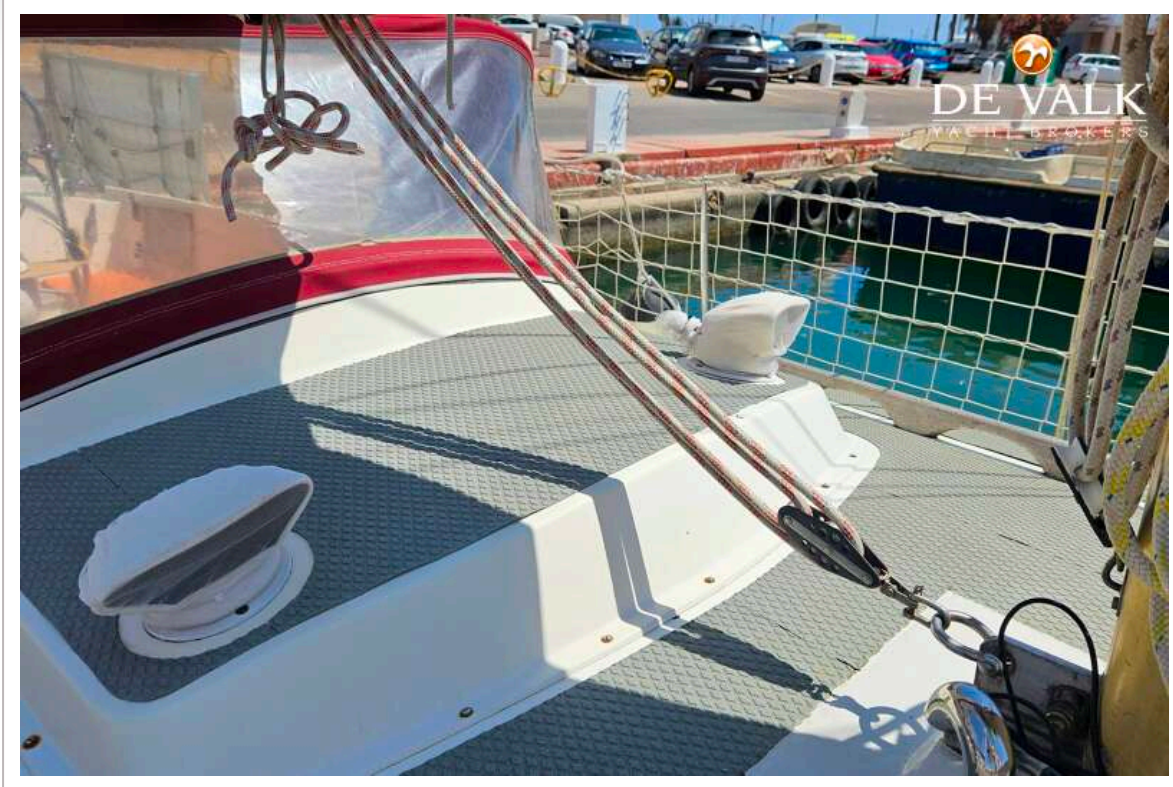
# WESTERLY CONWAY 36



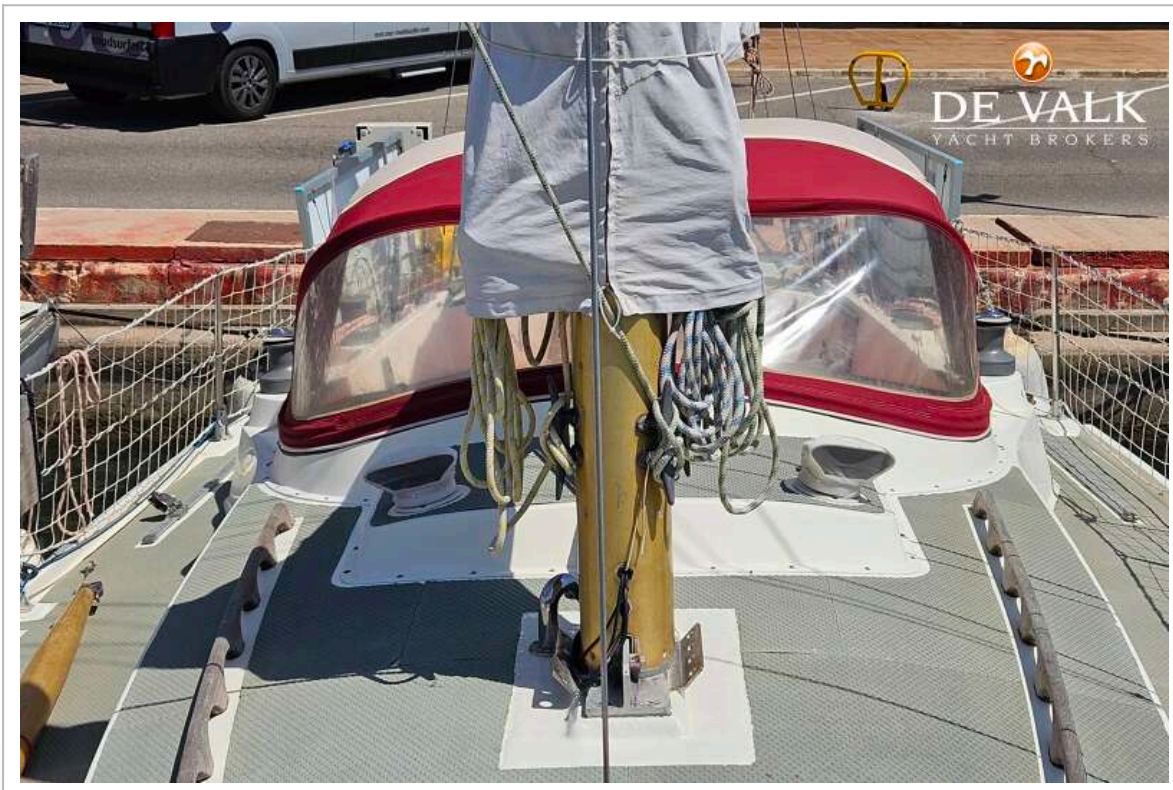
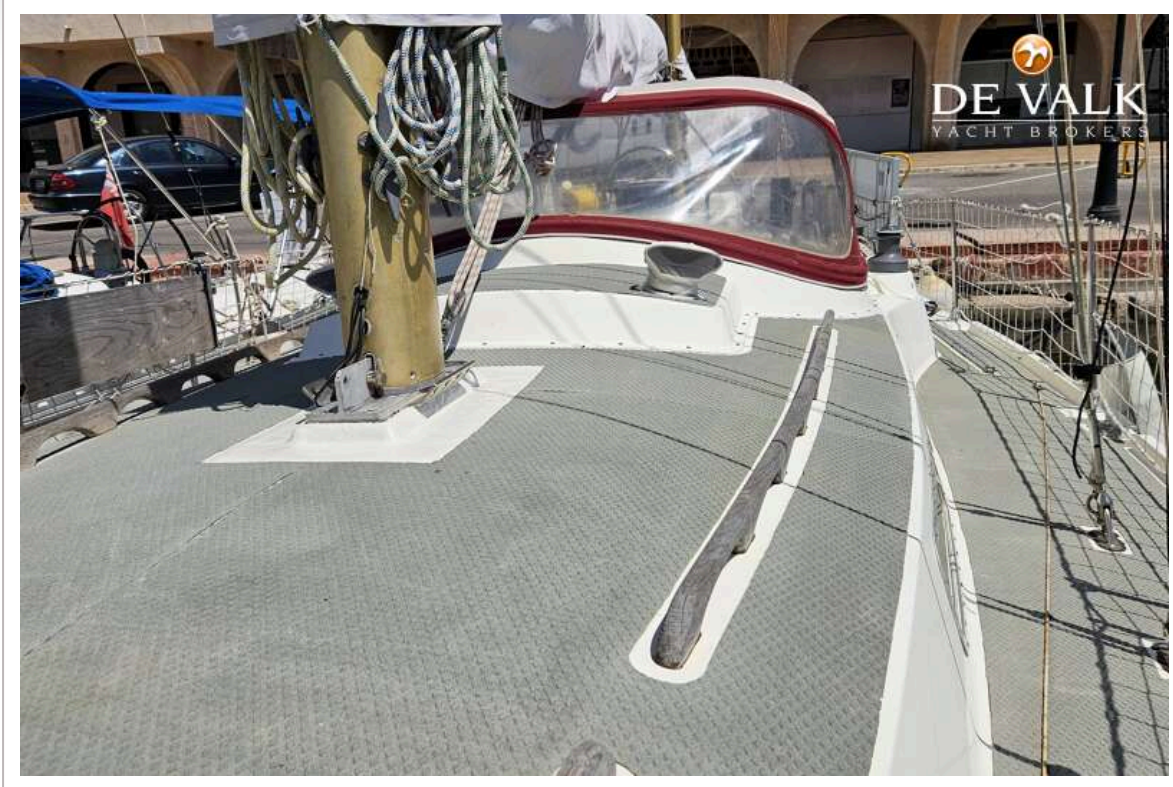
# WESTERLY CONWAY 36



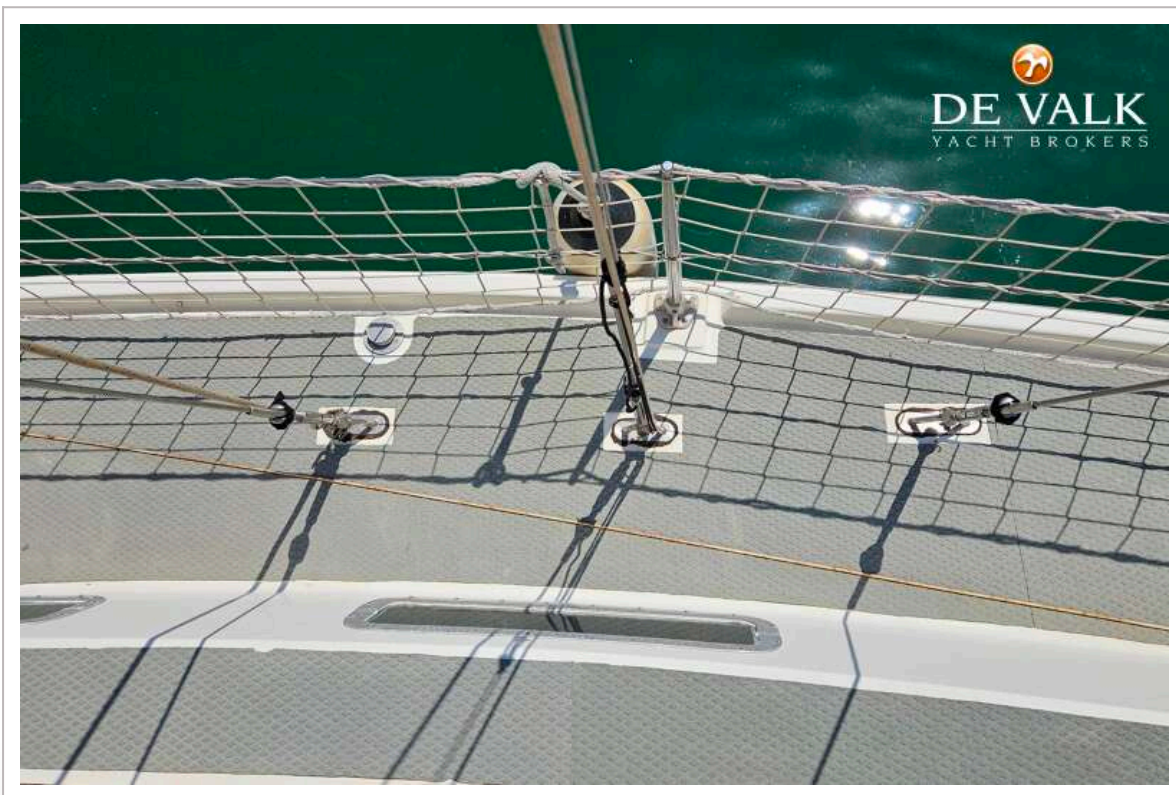
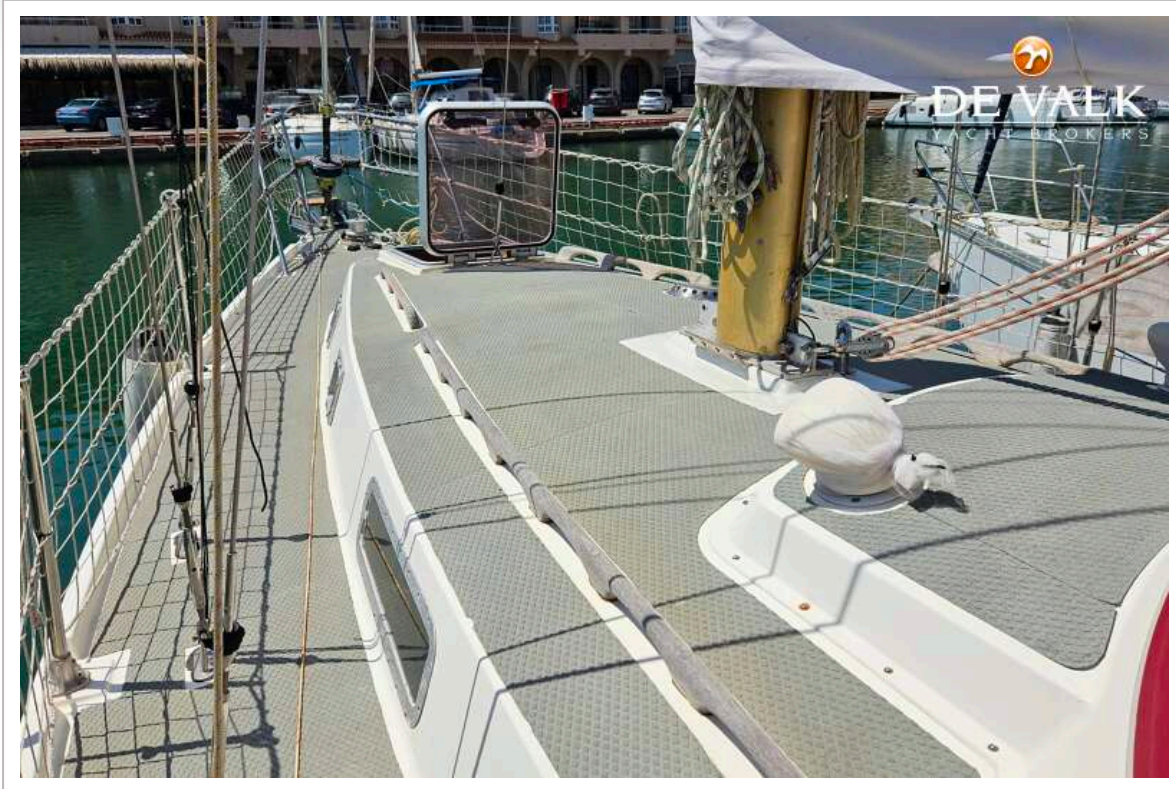
# WESTERLY CONWAY 36



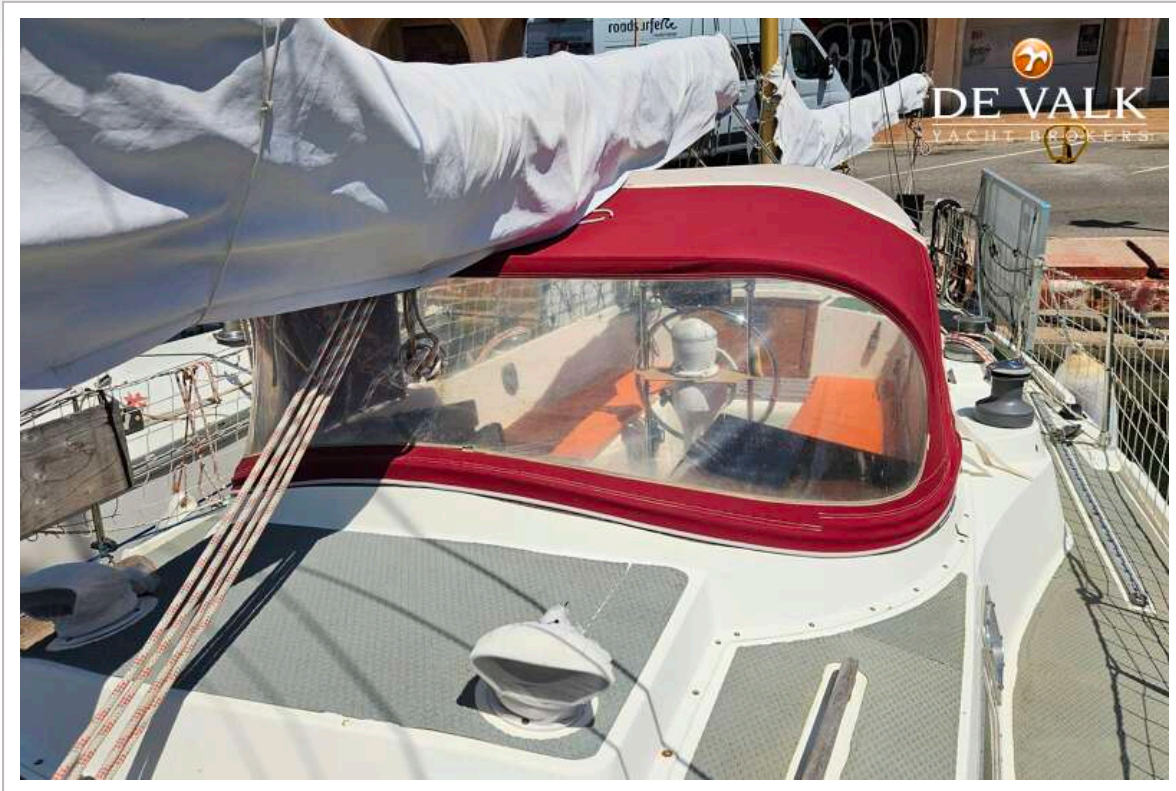
# WESTERLY CONWAY 36



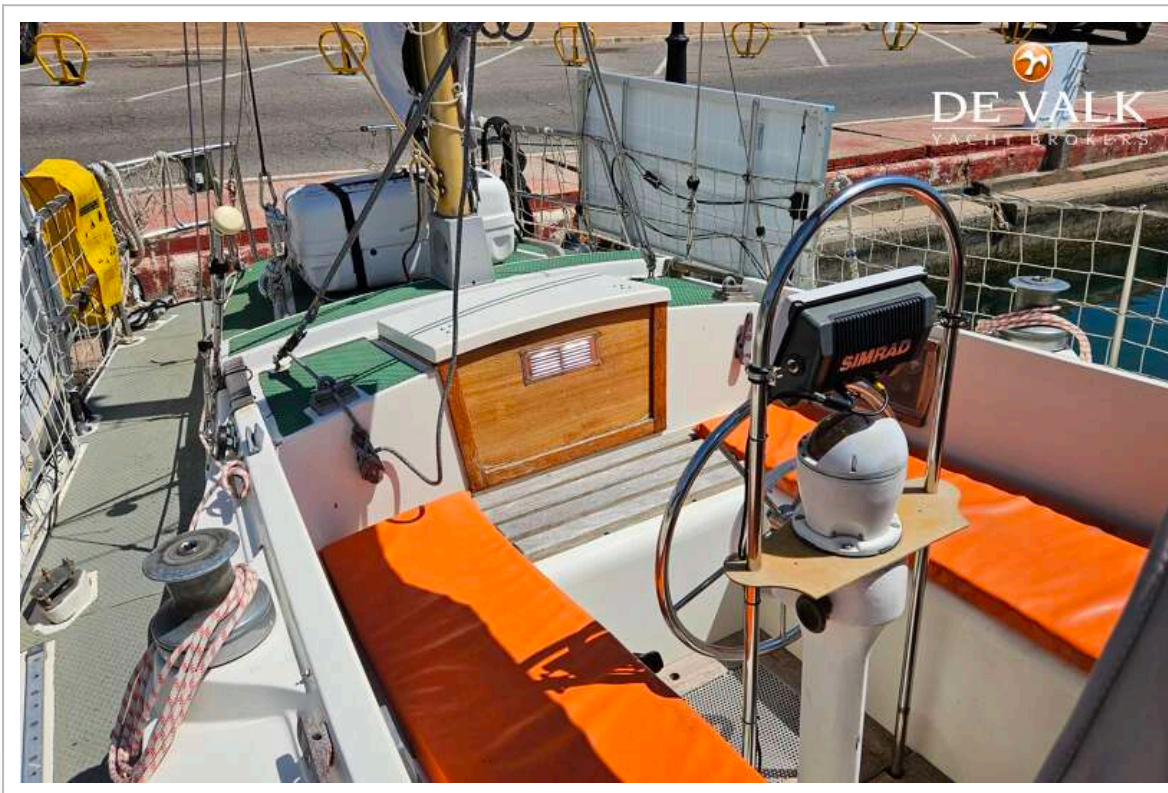
# WESTERLY CONWAY 36



# WESTERLY CONWAY 36



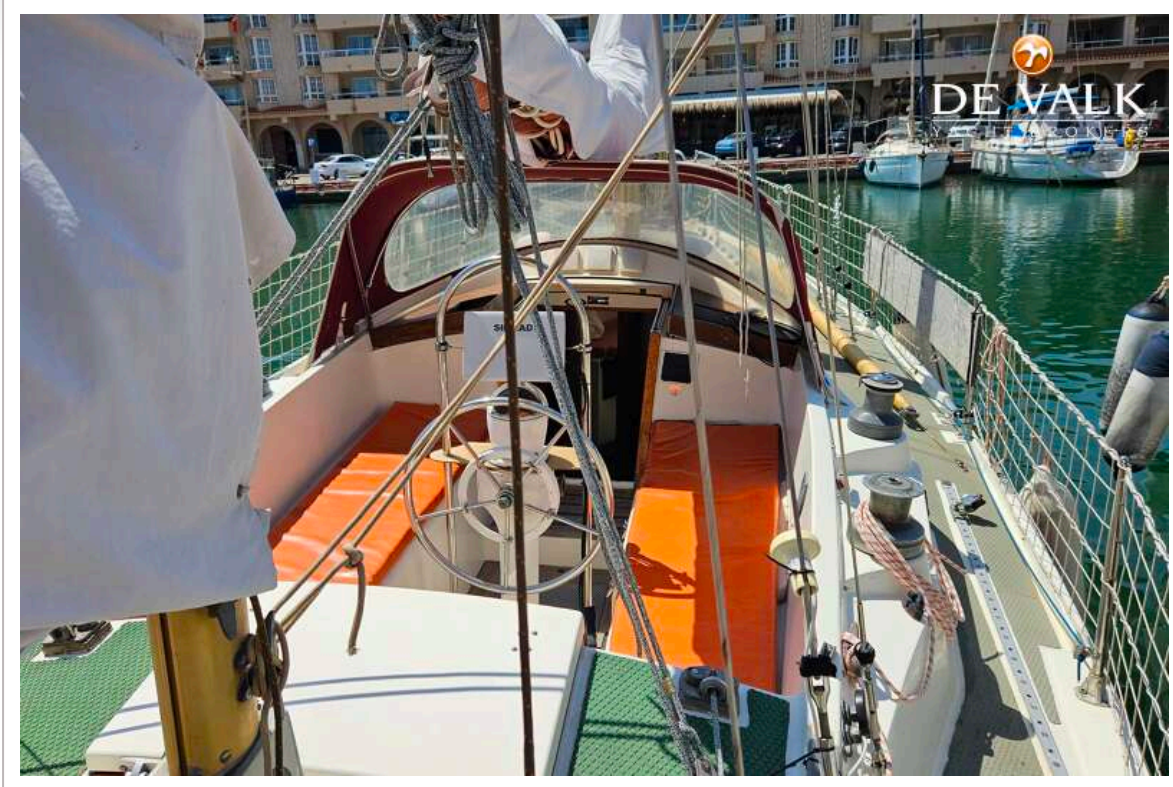
# WESTERLY CONWAY 36



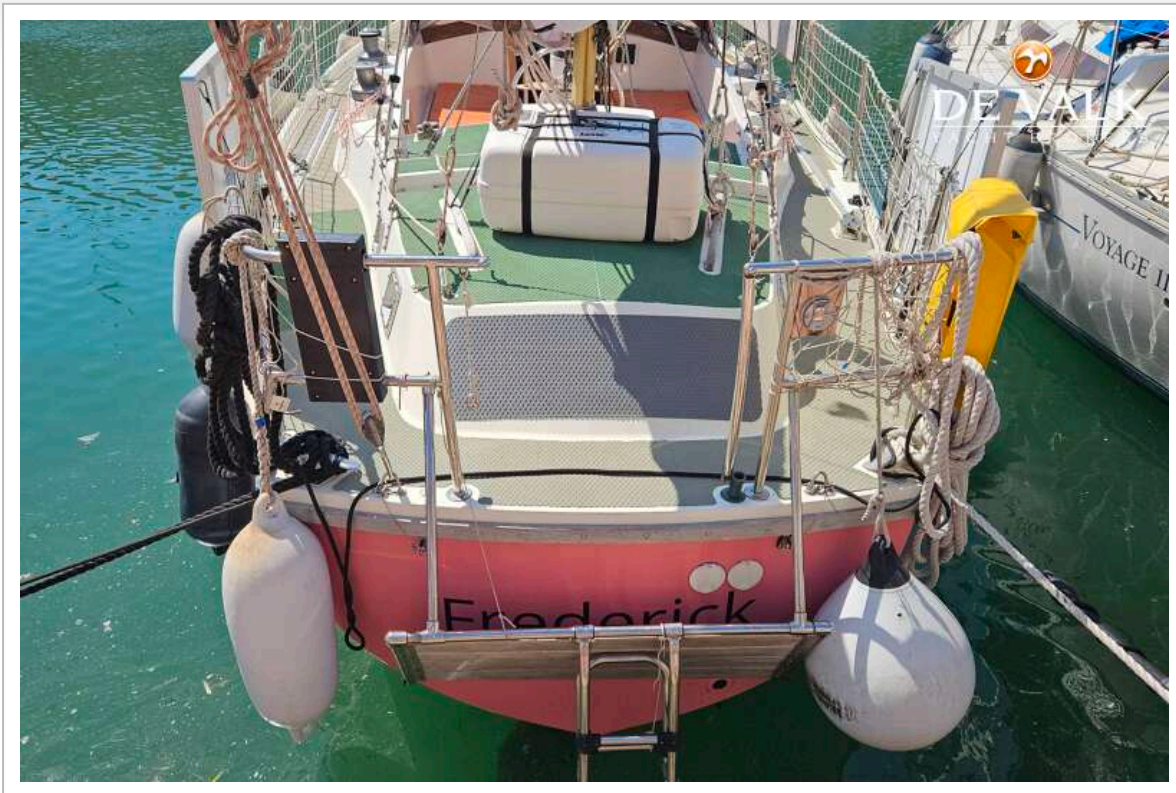
# WESTERLY CONWAY 36



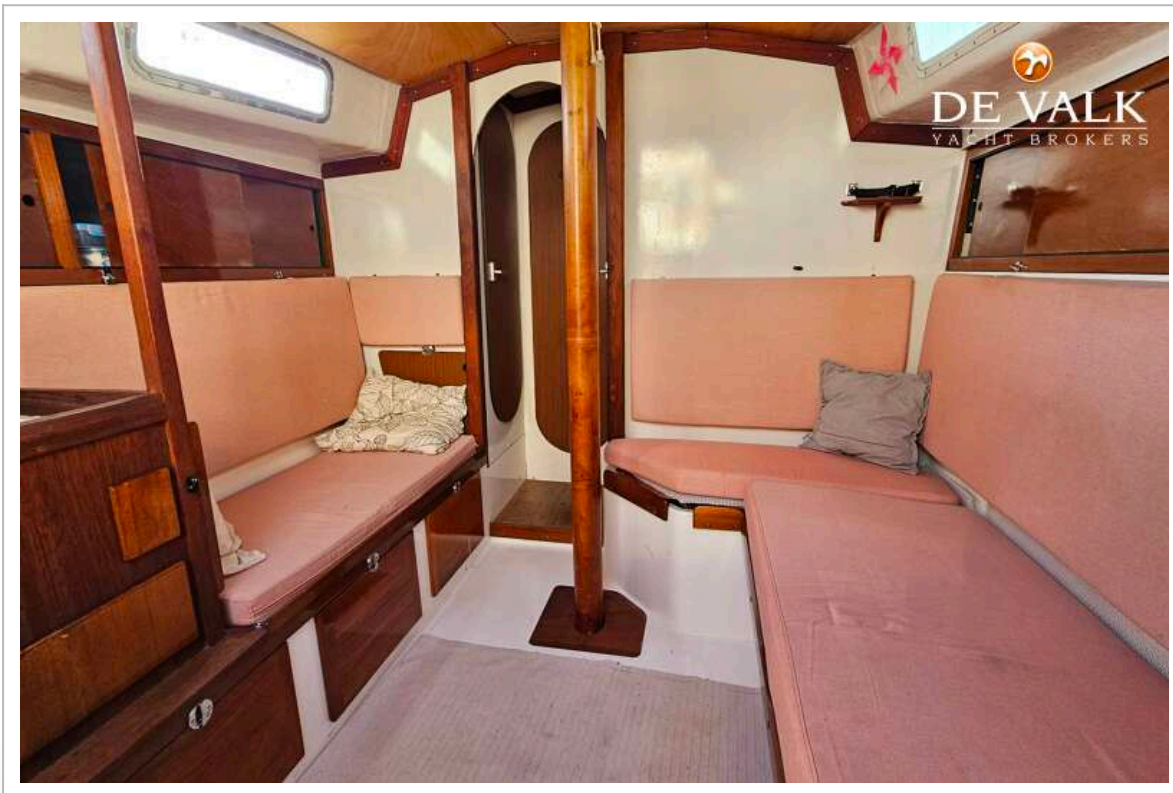
# WESTERLY CONWAY 36



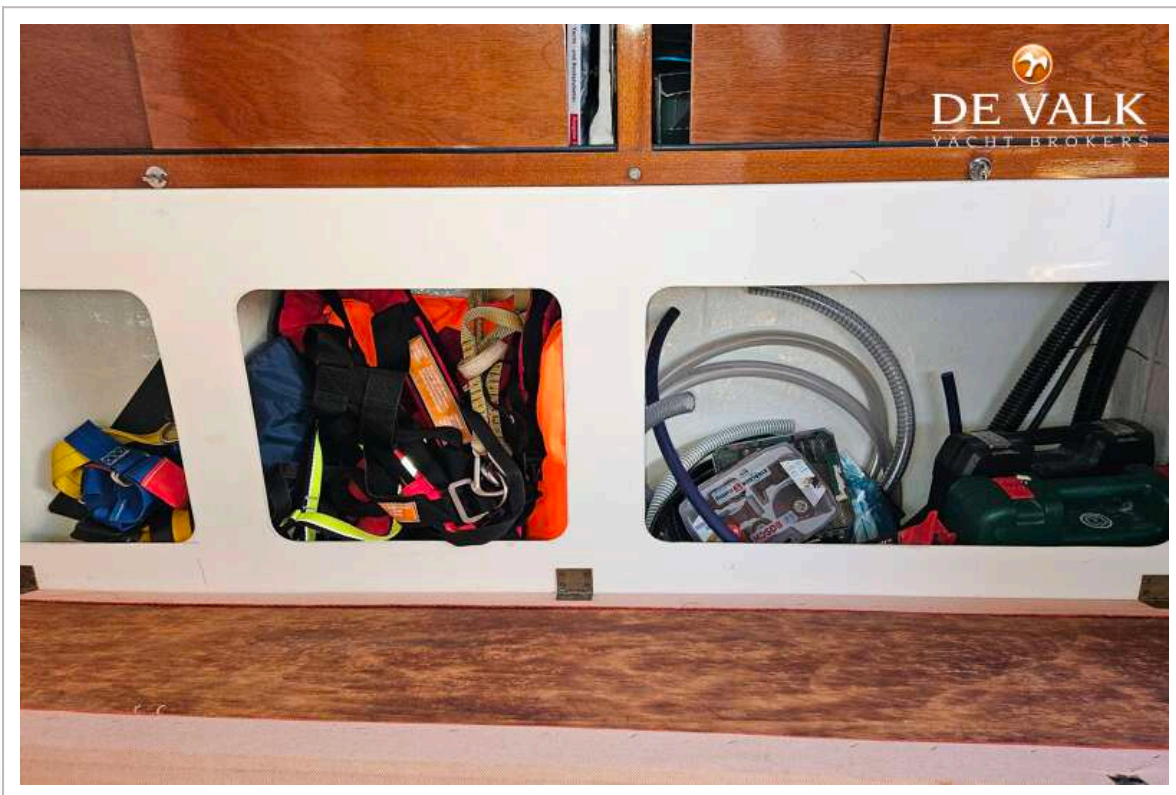
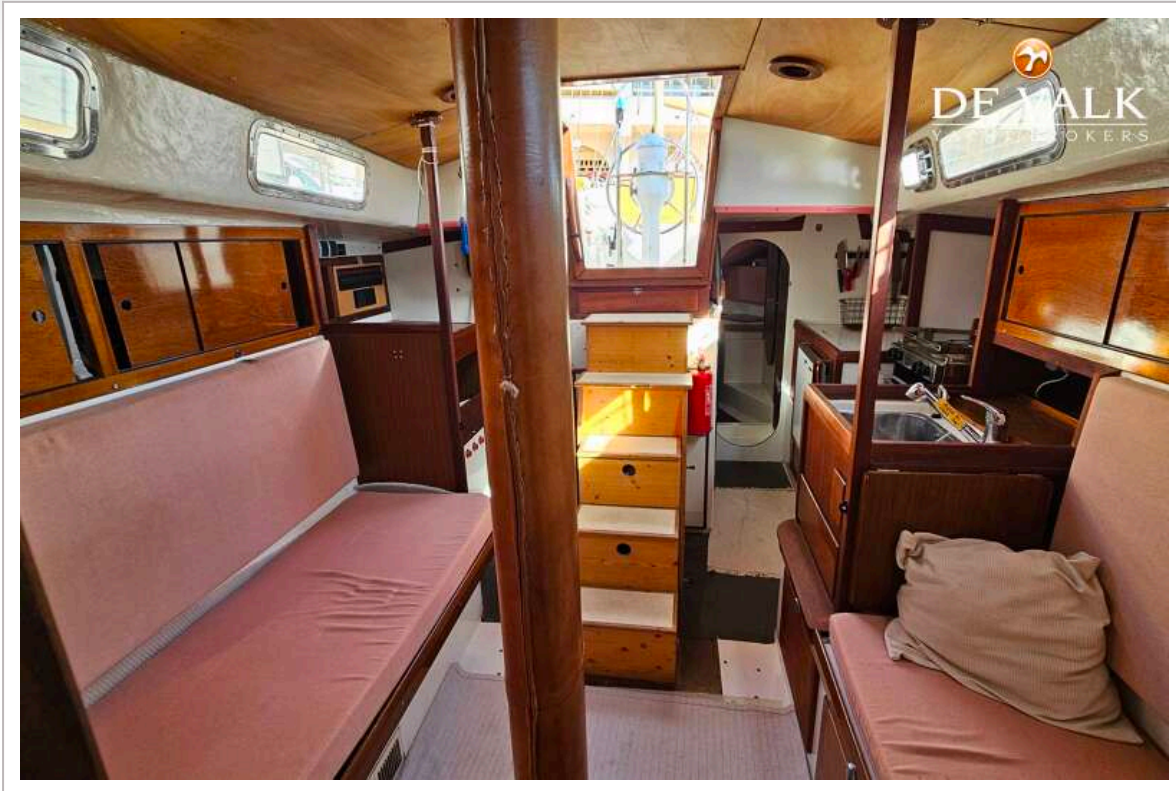
# WESTERLY CONWAY 36



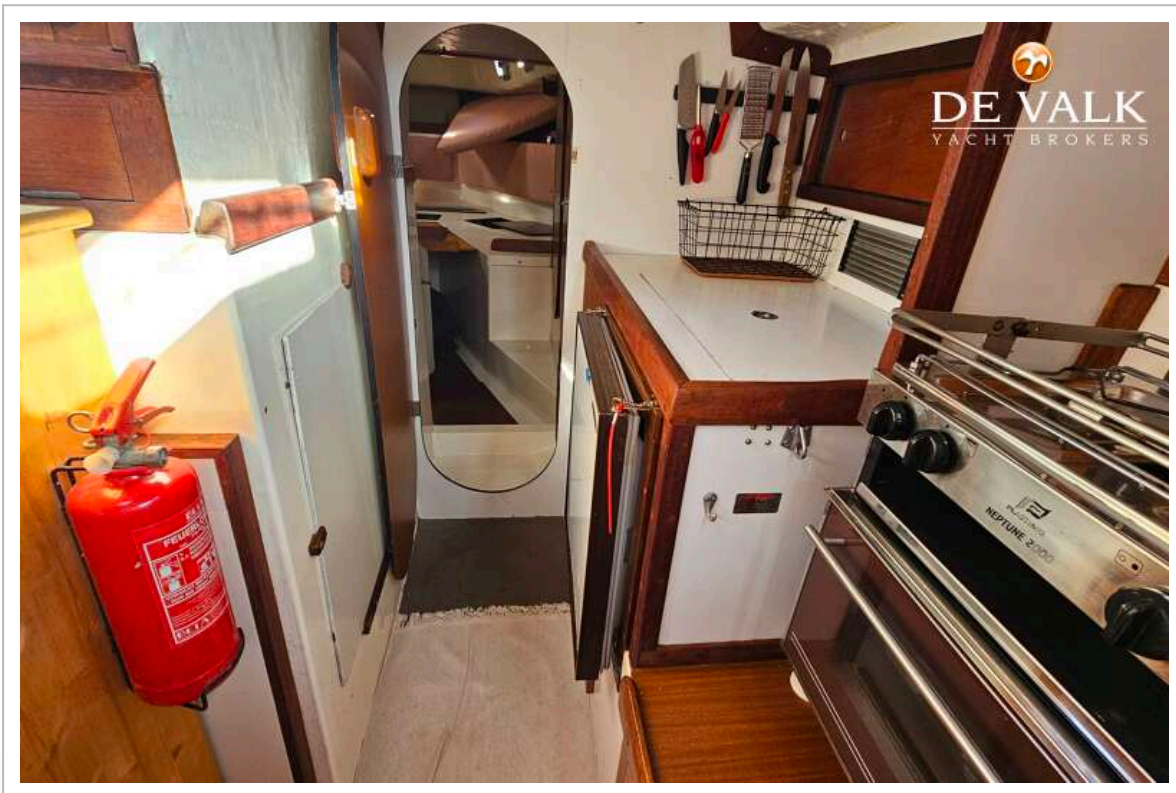
# WESTERLY CONWAY 36



# WESTERLY CONWAY 36



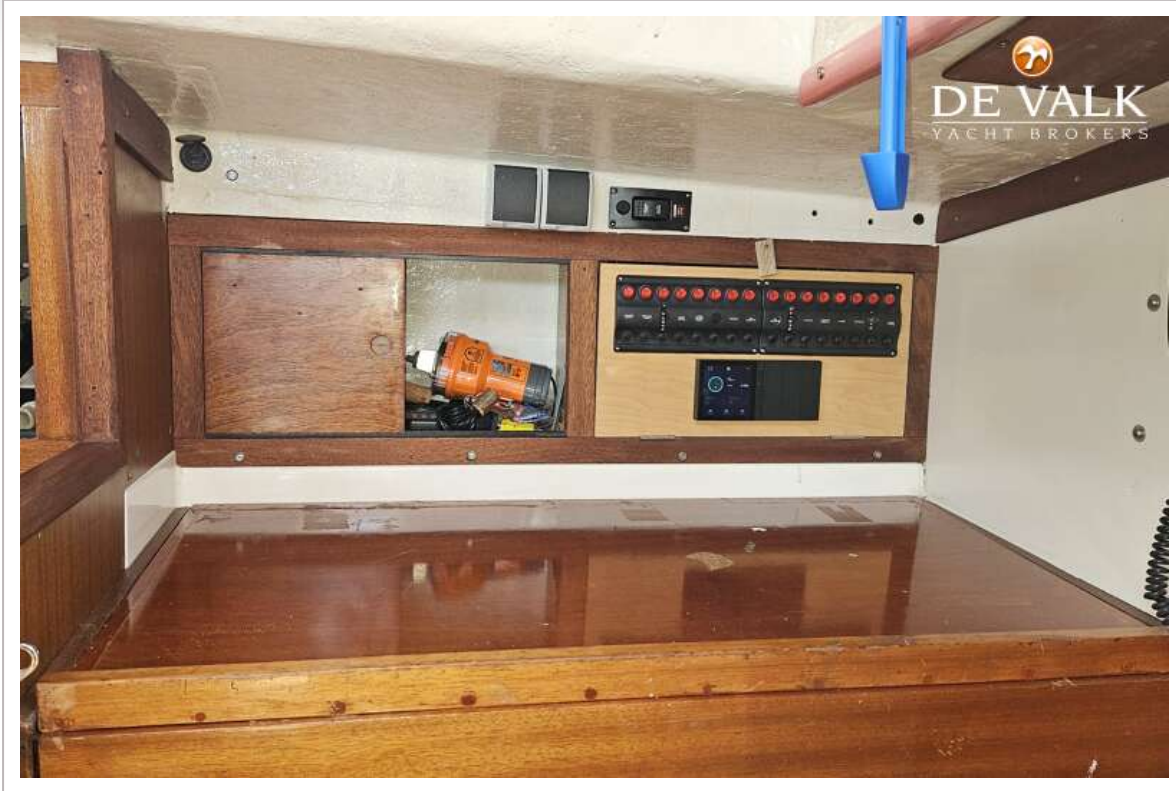
# WESTERLY CONWAY 36

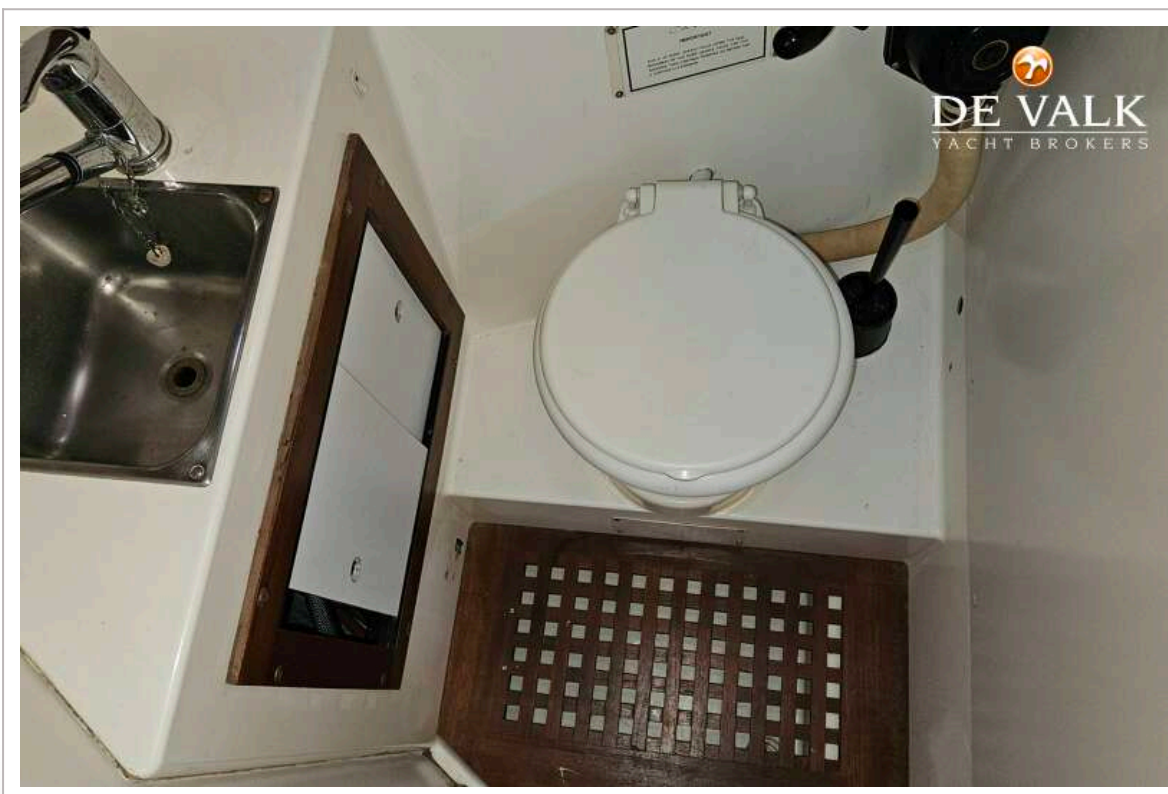
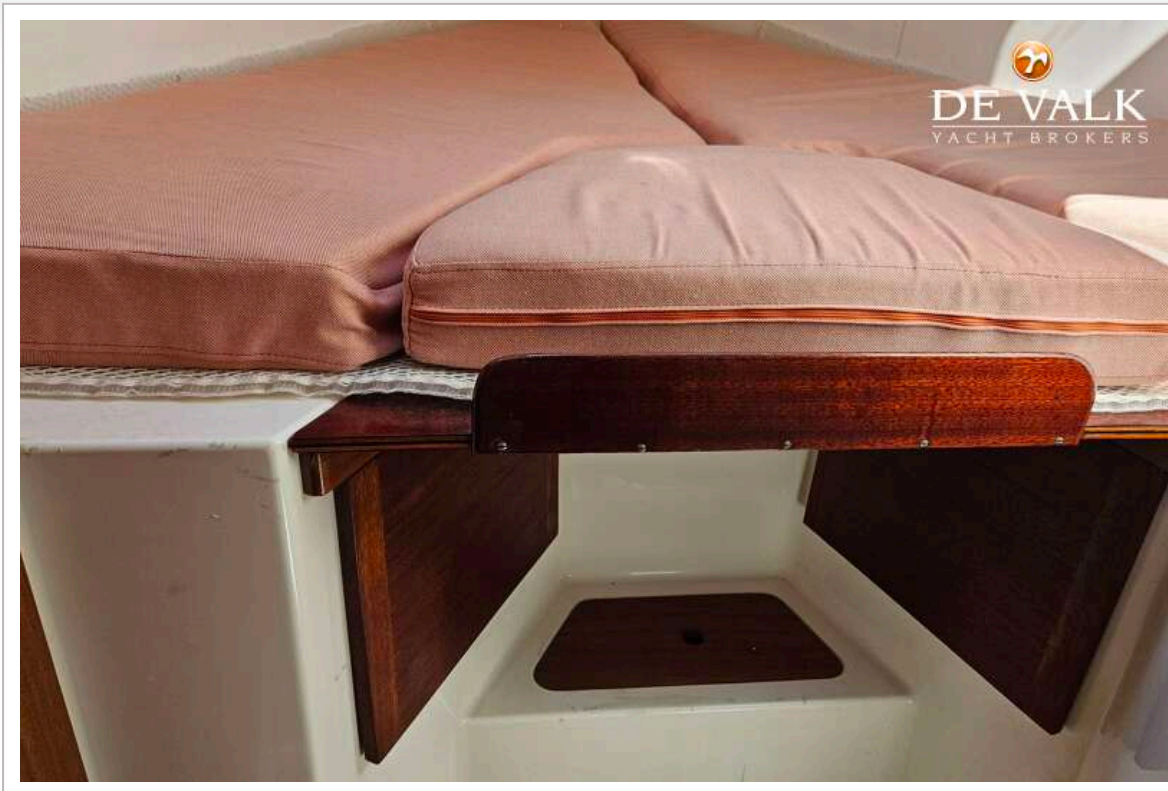


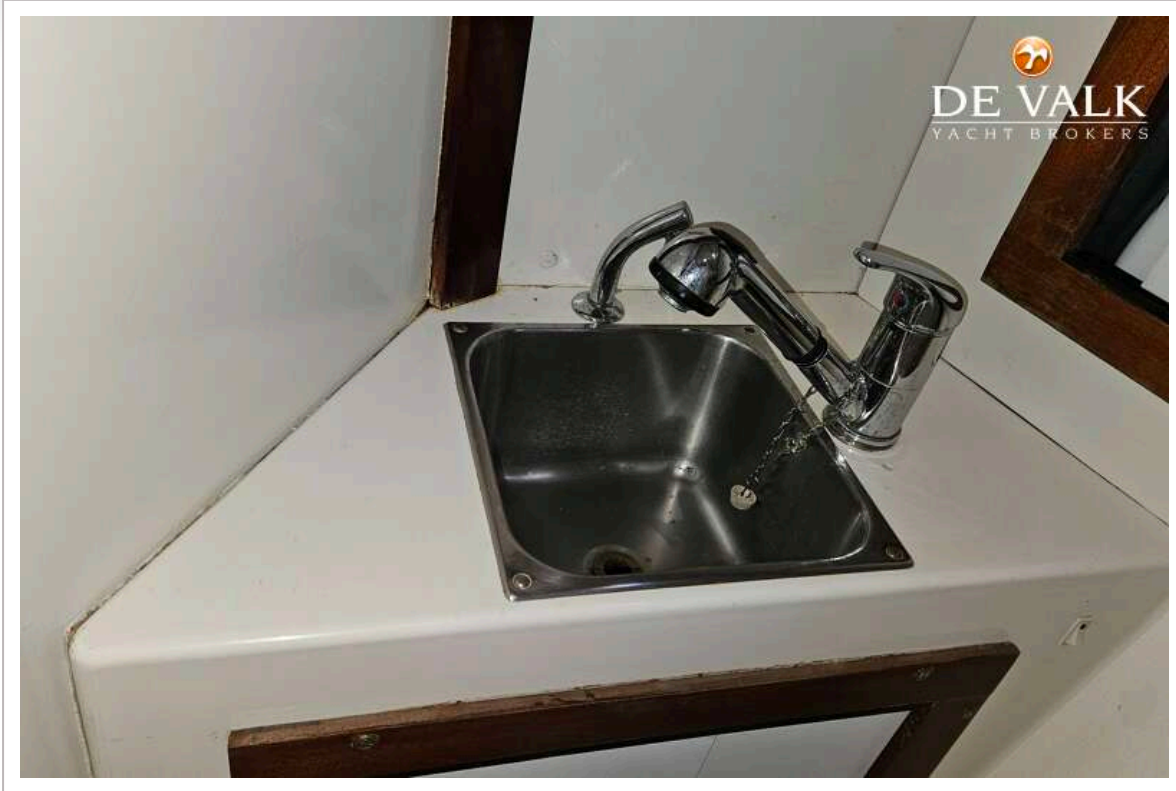
# WESTERLY CONWAY 36



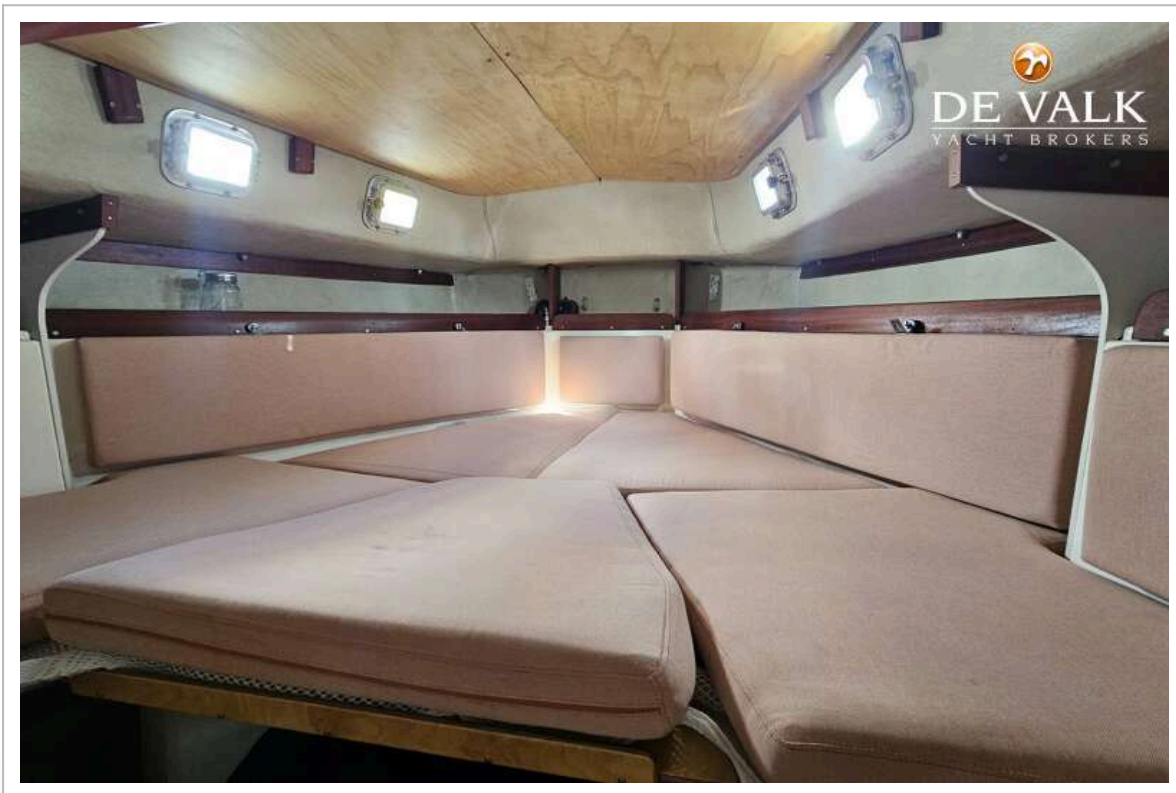
# WESTERLY CONWAY 36







# WESTERLY CONWAY 36



# WESTERLY CONWAY 36

