



DE VALK
YACHT BROKERS



PIKMEER 12.50 OK EXCLUSIVE



DE VALK
YACHT BROKERS

PIKMEER 12.50 OK EXCLUSIVE

BROKER'S COMMENTS

The Pikmeer 1250 OK Exclusive with aft cabin is the most luxurious version in this open-cockpit series. The surprisingly spacious aft cabin is a fully-fledged guest cabin. This Pikmeer 1250 OK Exclusive is in very good condition; the hull, superstructure, interior and technical systems of the 'Blauwe Zwaan' are all in excellent shape. Between 2023 and 2025, a great deal has been replaced and added, including air conditioning (2025). . If you are looking for a motor yacht like this, it is certainly worth making the trip to Sneek: we are open seven days a week,

Henk de Vries

SPECIFICATIONS

Dimensions	12.90 x 4.05 x 1,15 / 0.00 (m)	Builder	Jachtwerf de Groot B.V. Grou
Built	2010	Cabins	2
Material	Steel	Berths	6
Engine(s)	1 x Vetus Deutz DT 66452A diesel	Hp/Kw	170.00 (hp), 125.12 (kw)
Asking price	€ 279.000 (VAT Paid)	Lying	at sales office

CONTACT

Sales office	De Valk Sneek	Telephone	+31 (0)515 42 80 30
Address	Zwolsmanweg 7 8606 KC Sneek NL	E-mail	sneek@devalk.nl

DISCLAIMER

These particulars are given in good faith as supplied but cannot be guaranteed.



GENERAL

Model	PIKMEER 12.50 OK EXCLUSIVE
Type	motor yacht
LOA (m)	12,90
Beam (m)	4,05
Draft min (m)	1,15
Air draft min (m)	2,40
Headroom (m)	1,95
Year built	2010
Builder	Jachtwerf de Groot B.V. Grou
Country	The Netherlands
Designer	H.de Groot
Displacement (t)	13
CE norm	C
Hull material	steel
Hull colour	blue
Hull thickness (mm)	5
Hull shape	hard chine
Superstructure material	steel
Superstructure (mm)	4
Deck plate thickness (mm)	4
Rubbing strake	stainless steel
Deck material	steel
Deck finish	teak
Superstructure deck finish	paint
Cockpit deck finish	teak
Antifouling (year)	2025
Dorades	yes
Window frame	aluminium
Window material	tempered glass
Deckhatch	yes



Portholes	yes
Insulation	rockwool
Mast can be lowered	electric
Fuel tank (litre)	steel 400
Fuel tank 2 (litre)	steel 400
Level indicator (fuel tank)	VDO
Freshwater tank (litre)	stainless steel 2 x400
Level indicator (freshwater)	VDO
Blackwater tank (litre)	stainless steel 750
Level indicator (blackwater)	VDO
Blackwater tank extraction	deck extraction + pump
Wheel steering	hydraulic
Inside helm position	yes

ACCOMMODATION

Cabins	2
Berths	6
Interior	mahogany
Floor	teak and holly
Open cockpit	yes
Saloon	yes
Headroom saloon (m)	1,95
Heating	calorgas ducted hot air Eberspacher Airtronic D5
Air-conditioning	single cycle airco Webasto in the owners cabin (2025)
Aft Cabin	yes
Opening door to cockpit	yes
Opening door to aft deck	4x
Galley	yes
Countertop	Duropol
Sink	stainless steel
Cooker	ceramic 4-pits Siemens



Extractor	Dometic
Microwave/oven combi	Sharp Combi , Sensor & Grill-Hot Air.
Fridge	2x, Isotherm 130 ltr. & Virtifrigo 42 ltr.
Freezer	2x in fridge
Hot water system	220V + engine & Boiler 80 ltr.
Water pressure system	electrical
Owners cabin	French bed
Bed length (m)	2,0
Wardrobe	hanging/drawers/shelves
Bathroom	shared
Toilet	shared
Toilet system	electric Tecma
Wash basin	in the bathroom
Shower	shared
Guest cabin 1	twin single
Bed length (m)	2,0
Wardrobe	drawers
Bathroom	shared
Toilet	shared
Toilet system	electric
Shower	shared
Washing machine/dryer combi	Beko B300 (2023)

MACHINERY

No of engines	1
Make	Vetus Deutz
Type	DT 66452A
HP	170
kW	125.12
Fuel	diesel
Maximum speed (kn)	9



Cruising speed (kn)	7
Consumption (l/hr)	5
Engine hours	1582
Engine cooling system	freshwater heat exchanger
Drive	shaft
Shaft seal	yes
Engine controls	electrical Hydronautica, with Joystick control and remote control (2023)
Gearbox	hydraulic ZF 45A-2.0
Bowthruster	electric Vetus 95 kgf (5,7 kW) with remote control
Sternthruster	electric Vetus 95 kgf (5,7 kW) with remote control
Exhaust	watercooled
Propeller type	fixed
Propeller blades	4
Propeller shaft material	stainless steel
Shaft lubrication	water
Manual bilge pump	1x
Electric bilge pump	2x
Bilge alarm	yes
Electrical installation	12V / 220V
Generator	silent separator MasterVolt Whisper 6,6 kVA / 3.000rpm
Batteries	7 x
Start battery	1x 140 Ah Varta (2026)
Service battery	5x 160 Ah MasterVolt AGM (2026)
Generator battery	1x 74 Ah (2026)
Bowthruster battery	yes
Sternthruster battery	yes
Battery monitor	Victron Energy, digital multi control
Battery charger	Victron Blue Power 12/10A
Battery charger/inverter	Victron Phoenix Multiplus 12/3000/120
Shorepower	with cable
Insulation transformer	yes



NAVIGATION

Electric compass	Raymarine Axiom
Depth sounder/log	Raymarine ST60+ Tridata
VHF	Raymarine Ray240E VHF
VHF handheld	Icom IC-M25 & Icom IC-M31
Autopilot	Raymarine ST 8002& Raymarine Smartcontroller with remote control
Rudder angle indicator	VDO
Plotter/GPS	Raymarine Axiom (touch screen)
AIS transceiver	yes
Camera	MXN-P70 (rearview)
Navigation lights	yes

EQUIPMENT

Fixed windscreen	yes
Bimini	yes
Cockpit cushions	yes
Bathing platform	Teak on steel
Boarding ladder	yes
Anchor	yes
Anchor chain	yes
Windlass	electrical Vetus TG-016277
Deck wash	yes
Davits	Prepared
Sea railing	stainless steel
Grab rail (superstructure)	stainless steel
Railing side opening gates	yes
Wiper	3x
Horn	electric
Fenders	yes
Mooring lines	yes



Spare parts	yes
TV	JVC flatscreen
TV receiver	Vega
Radio-cd player	Pioneer DVH-P4100UB
Speakers in salon	yes
Fire extinguisher	yes
Extinguisher in engine room	yes

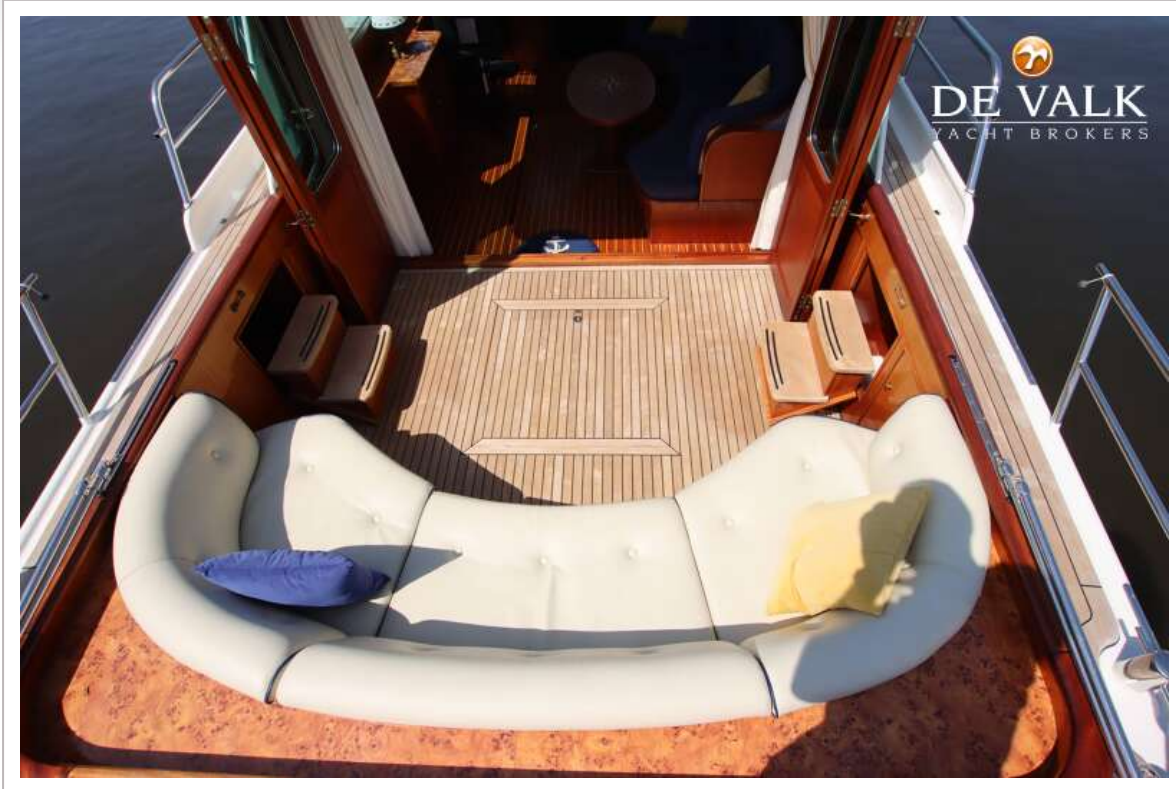




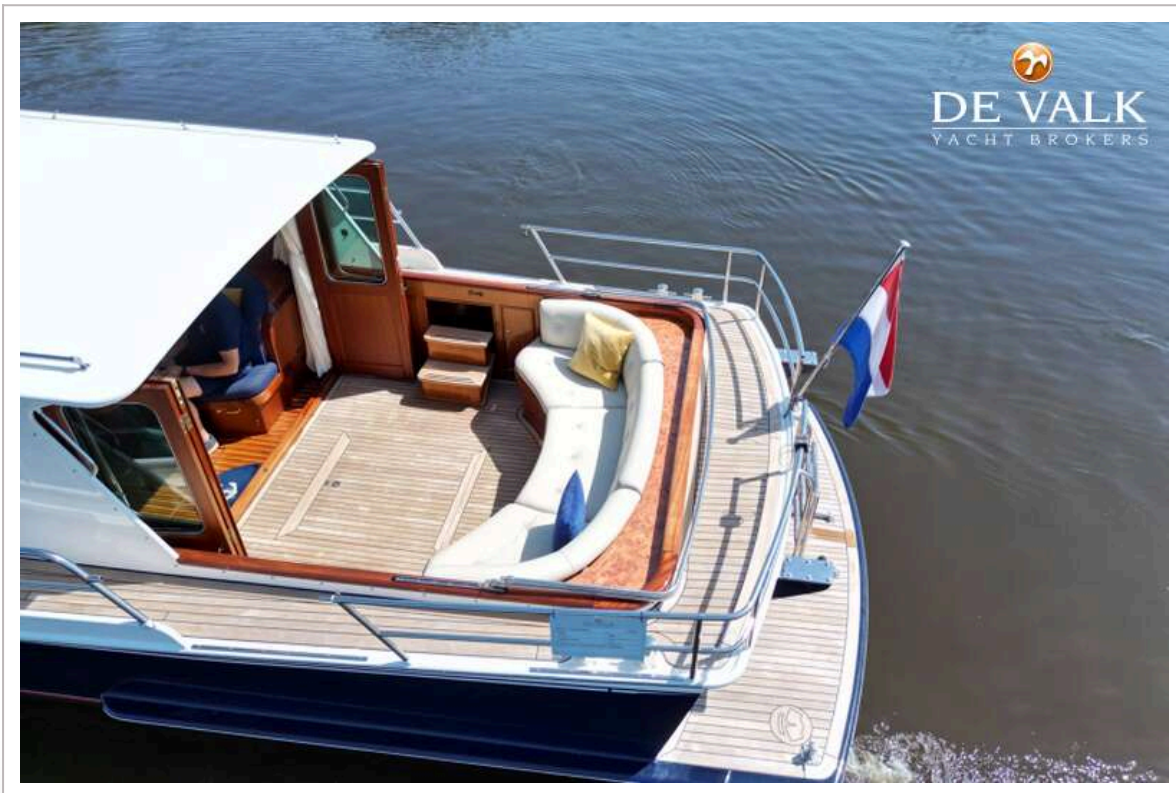
PIKMEER 12.50 OK EXCLUSIVE



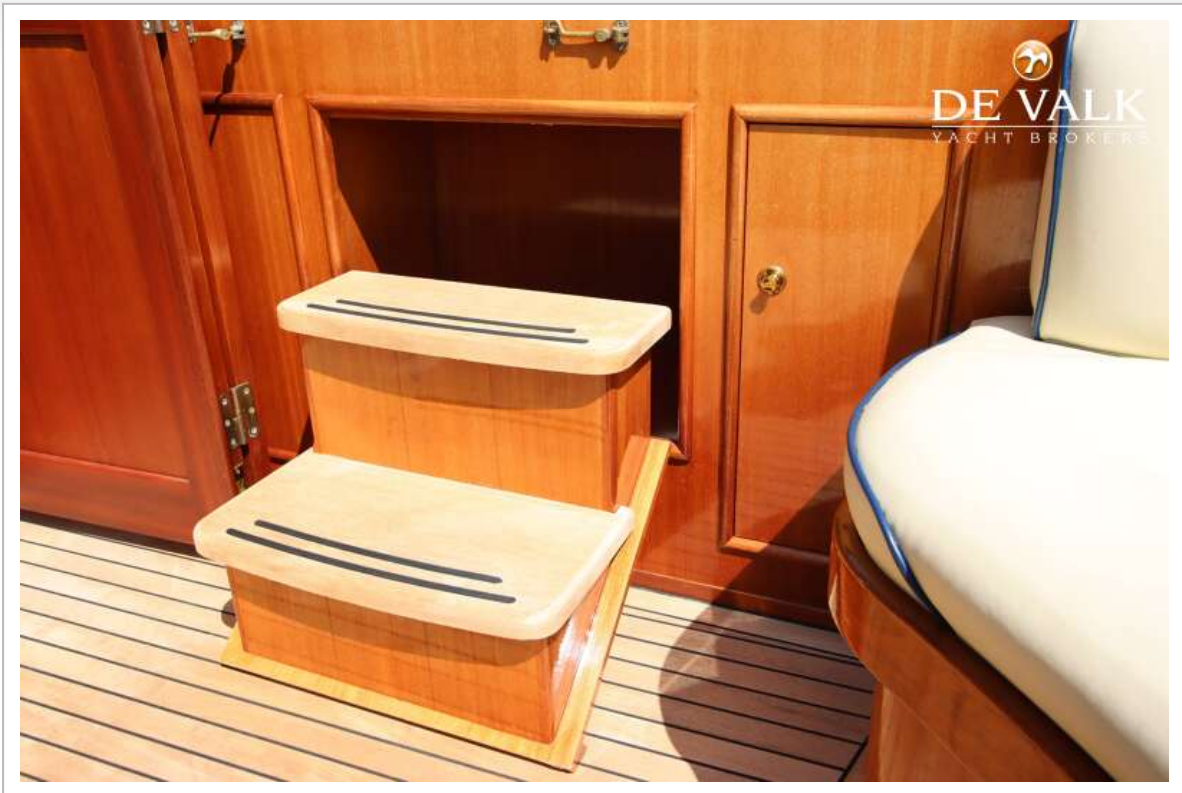
PIKMEER 12.50 OK EXCLUSIVE







PIKMEER 12.50 OK EXCLUSIVE





PIKMEER 12.50 OK EXCLUSIVE

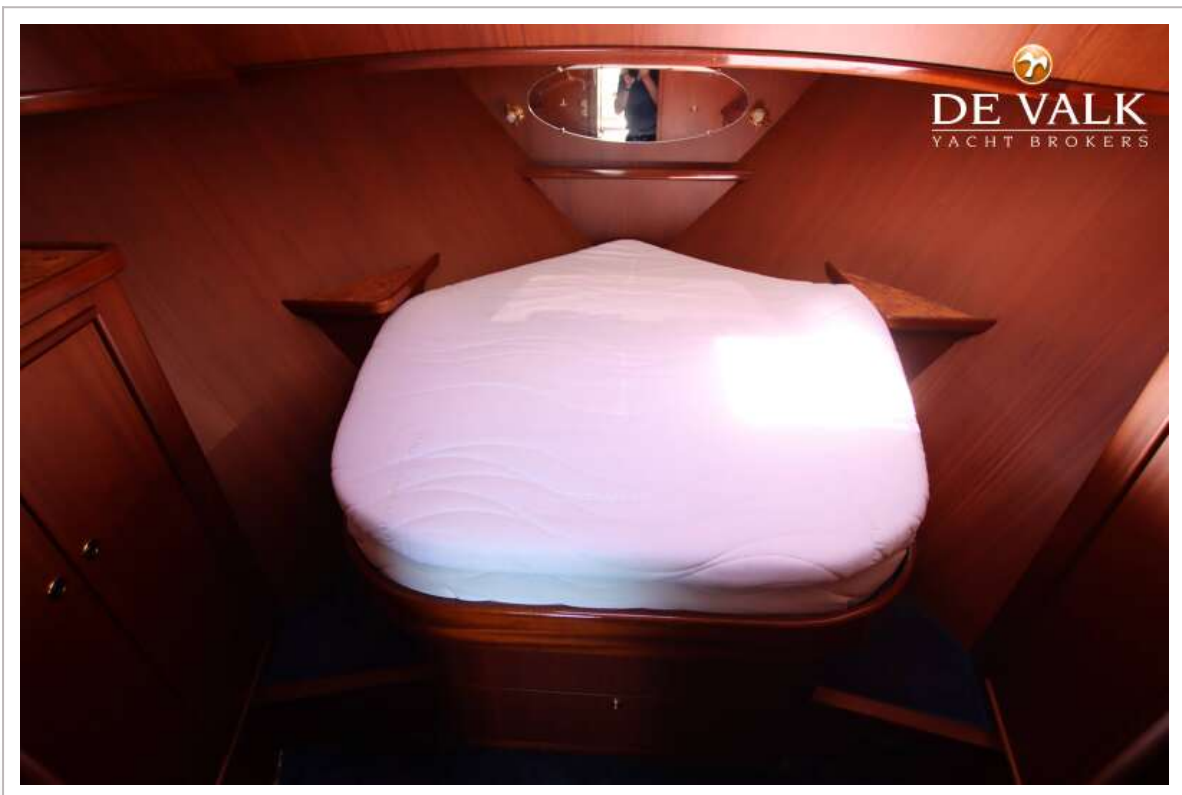
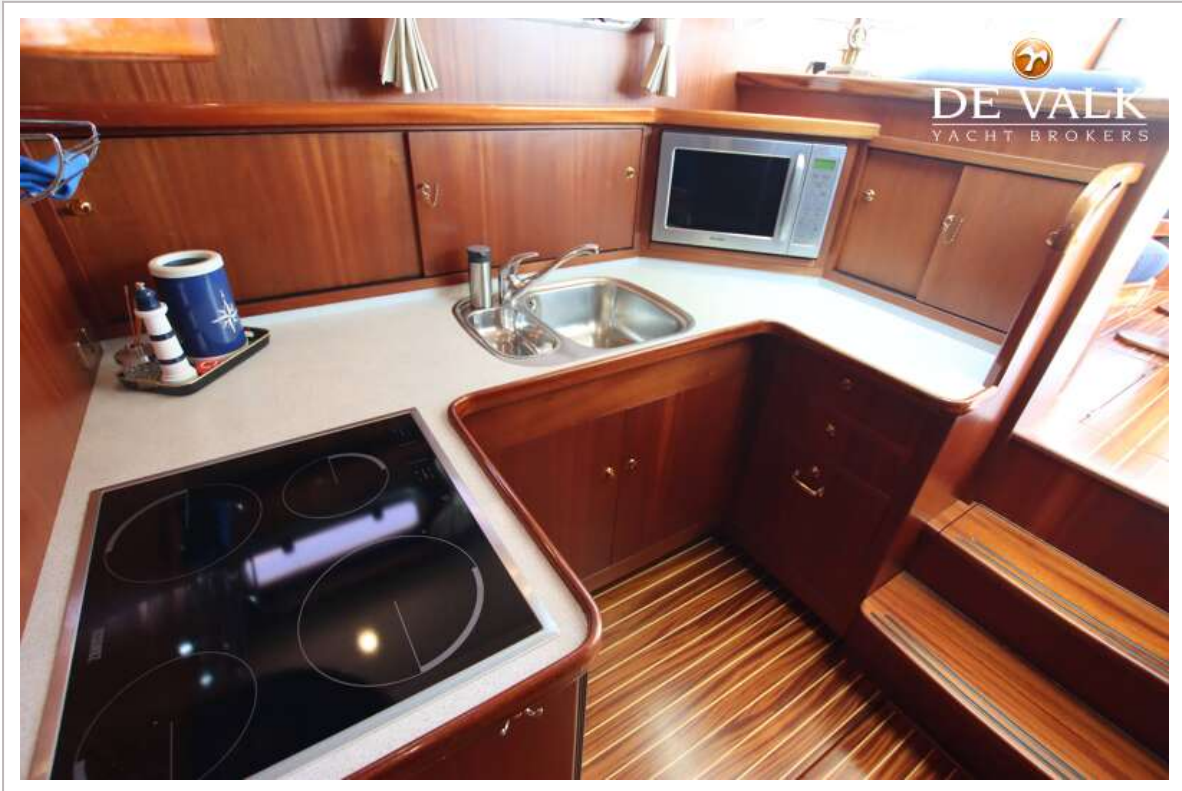


PIKMEER 12.50 OK EXCLUSIVE



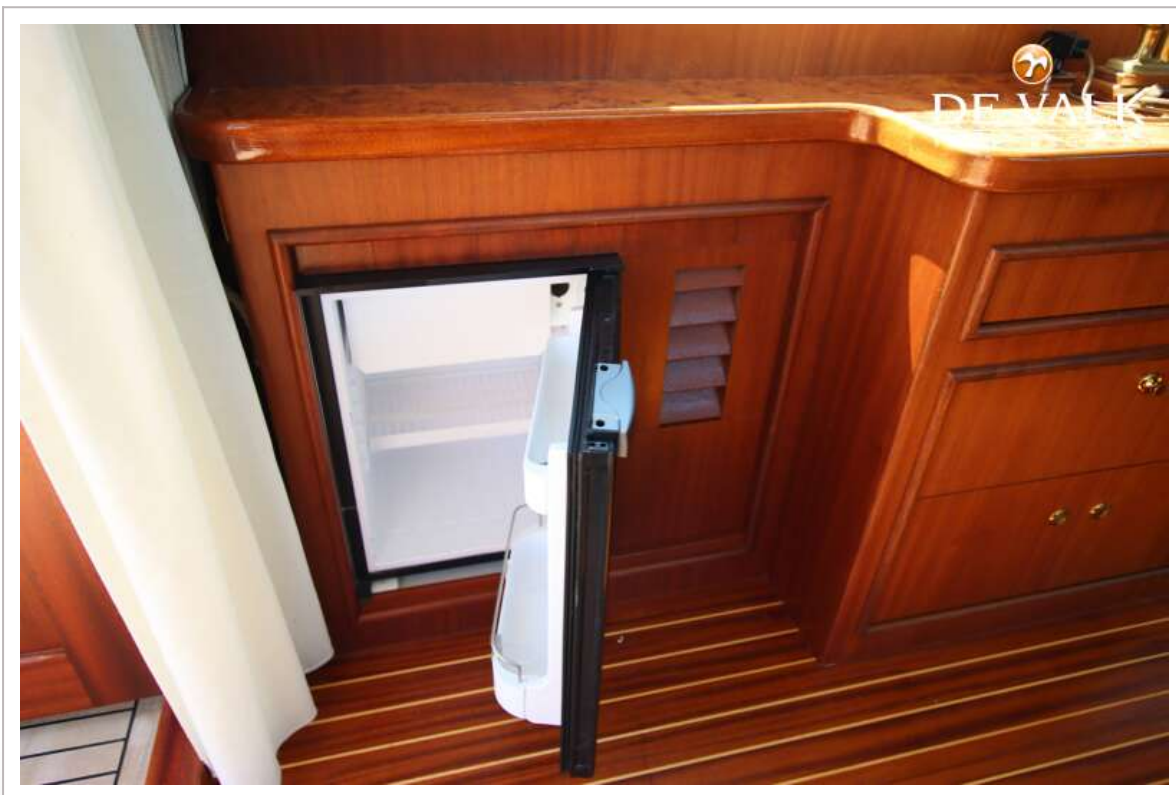
PIKMEER 12.50 OK EXCLUSIVE







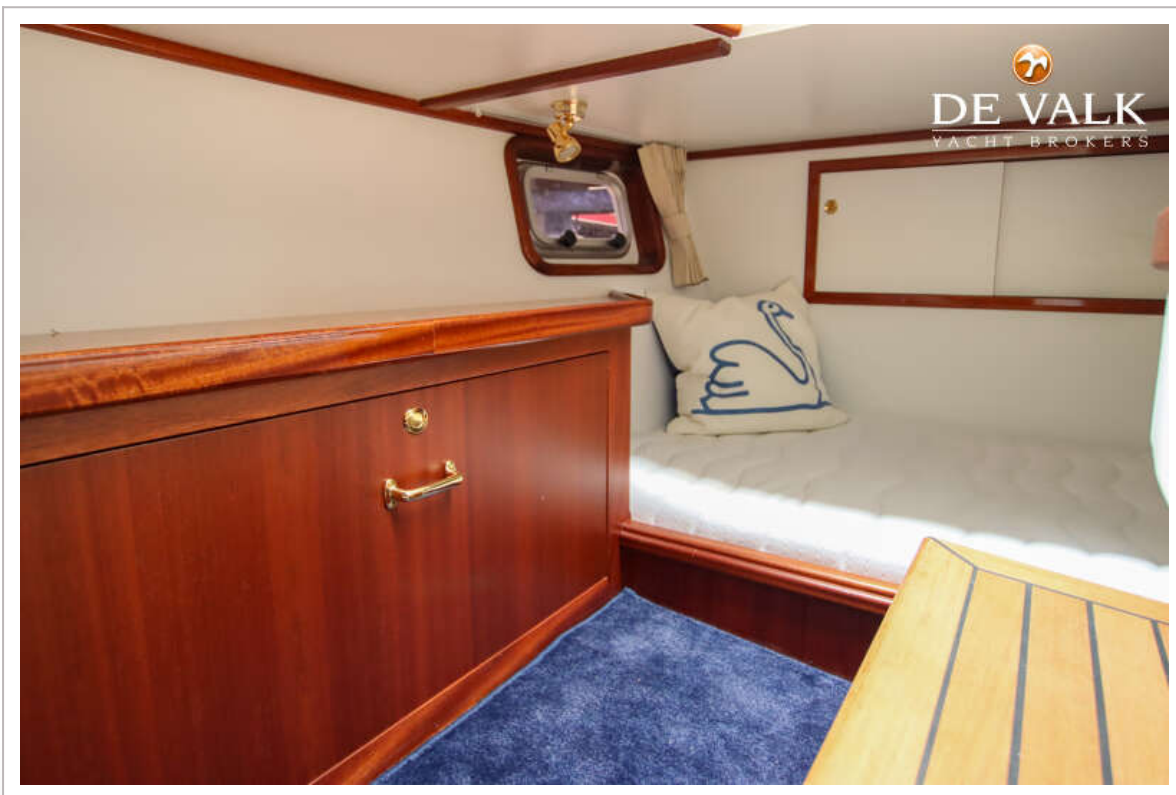




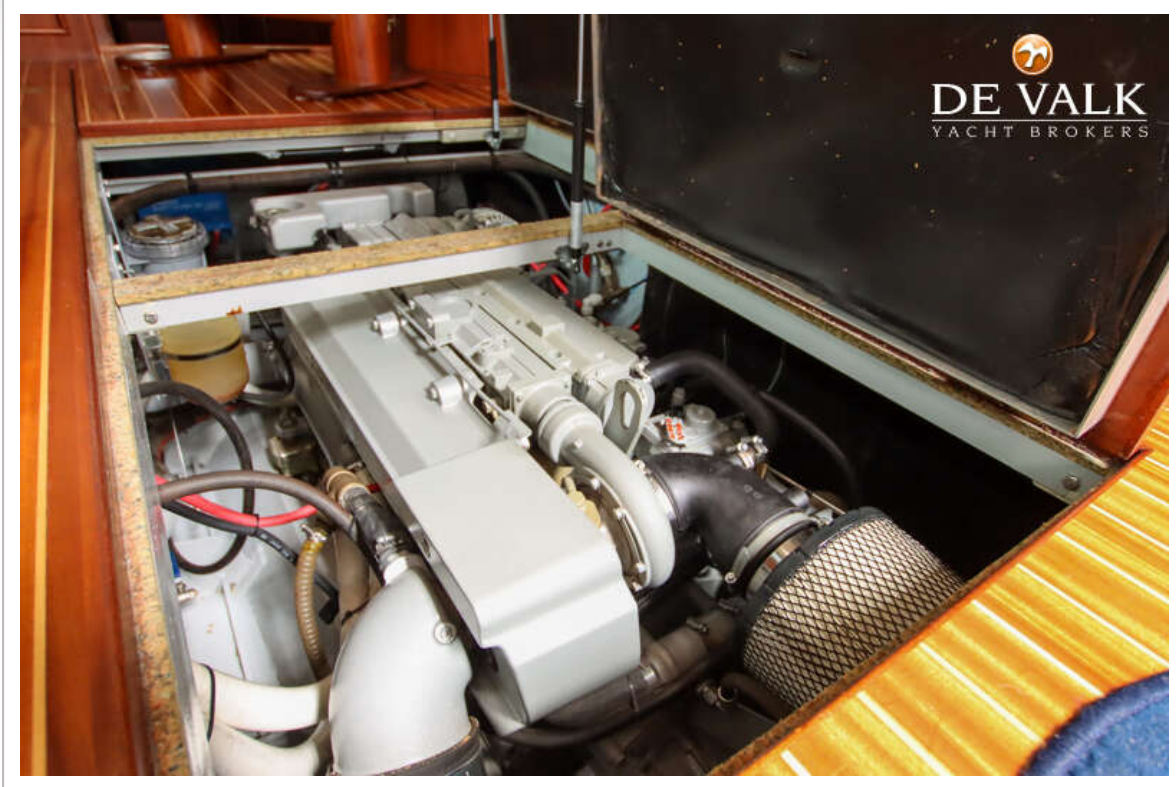
PIKMEER 12.50 OK EXCLUSIVE



PIKMEER 12.50 OK EXCLUSIVE



PIKMEER 12.50 OK EXCLUSIVE



PIKMEER 12.50 OK EXCLUSIVE

