



DE VALK
YACHT BROKERS



INVICTUS GT 370



DE VALK
YACHT BROKERS

INVICTUS GT 370

BROKER'S COMMENTS

Experience Italian style and performance with this stunning 2024 Invictus GT 370. Powered by twin Volvo Penta D4-320 engines with joystick control, she delivers sporty handling and speeds up to 38 knots. Featuring a luxurious 2-cabin layout, hydraulic swim platform, electric bimini and premium Fusion audio system, she is perfectly equipped for unforgettable days on the water. Presented in elegant Vanille Sea Metallic and ready to cruise.

Julian de Heer

SPECIFICATIONS

Dimensions	11.40 x 3.50 x 0.90 (m)	Builder	Invictus Yacht
Built	2024	Cabins	2
Material	GRP	Berths	4
Engine(s)	2 x Volvo Penta D4 diesel	Hp/Kw	2 x 320.00 (hp), 235.52 (kw)
Asking price	€ 549.000 (VAT Paid)	Lying	elsewhere / Not at sales office

CONTACT

Sales office	De Valk Loosdrecht B.V.	Telephone	+31 (0)35 582 90 30
Address	't Breukeleveense Meentje 6 1231LM Loosdrecht / Wijdmeren NL	E-mail	loosdrecht@devalk.nl

DISCLAIMER

These particulars are given in good faith as supplied but cannot be guaranteed.



INVICTUS GT 370

GENERAL

Model	INVICTUS GT 370
Type	motor yacht
LOA (m)	11,40
Beam (m)	3,50
Draft (m)	0,90
Air draft (m)	3,01
Year built	2024
Builder	Invictus Yacht
Country	Italy
Designer	Christian Grande
Displacement (t)	6,9
CE norm	C
Hull material	GRP
Hull colour	Vanille Sea Metallic
Hull shape	V-shaped hull
Superstructure material	GRP
Deck material	GRP
Deck finish	teak
Cockpit deck finish	teak
Window frame	stainless steel
Window material	tempered glass
Portholes	polymer
Fuel tank (litre)	740
Level indicator (fuel tank)	yes
Freshwater tank (litre)	230
Level indicator (freshwater)	yes
Wheel steering	hydraulic
Outside helm position	hydraulic

ACCOMMODATION



INVICTUS GT 370

Cabins	2
Berths	4
Interior	Premium Composite Grey
Layout	yes
Floor	carpet
Open cockpit	yes
Aft deck	yes
Deck saloon	yes
Aft Cabin	yes
Sliding door to cockpit	yes
Galley	yes
Countertop	plastic
Sink	stainless steel
Cooker	induction
Fridge	1 inside 1 outside
Hot water system	220V + engine
Owners cabin	double bed
Bed length (m)	2,00 +/-
Bathroom	shared
Toilet	shared
Toilet system	electric
Wash basin	in the bathroom
Shower	shared
Guest cabin 1	double bed
Bed length (m)	2,00 +/-
Wet bar	With sink and electric grill

MACHINERY

No of engines	2
Make	Volvo Penta
Type	D4



INVICTUS GT 370

HP	320
kW	235.52
Fuel	diesel
Maximum speed (kn)	38
Engine hours	101
Engine cooling system	freshwater heat exchanger
Drive	stern
Engine controls	electrical + Joystick
Gearbox	hydraulic
Bowthruster	electric
Propeller type	fixed
Propeller blades	2x 3
Electric bilge pump	yes
Generator	wet exhaust Fisher Panda 5000i, 4 kW
Inverter	Victron 5000 Quattro
Shorepower	with cable

NAVIGATION

Compass	yes
Depth sounder/log	Garmin 8412 2x 12 inch display
Fish finder	yes
VHF	Garmin 315i
Rudder angle indicator	yes
Plotter	Garmin 8412 2x 12 inch display
Navigation lights	yes

EQUIPMENT

Bimini	Electric
Cockpit cushions	yes
Cockpit table	yes
Cockpit chairs	yes



INVICTUS GT 370

Bathing platform	Hydraulic
Boarding ladder	stainless steel
Deck shower	yes
Anchor	yes
Anchor chain	yes
Windlass	electrical
Deck wash	yes
Sea railing	stainless steel
Horn	electric
Radio	Upgrade Hi-Fi Fusion
Cockpit speakers	16



INVICTUS GT 370



INVICTUS GT 370



INVICTUS GT 370



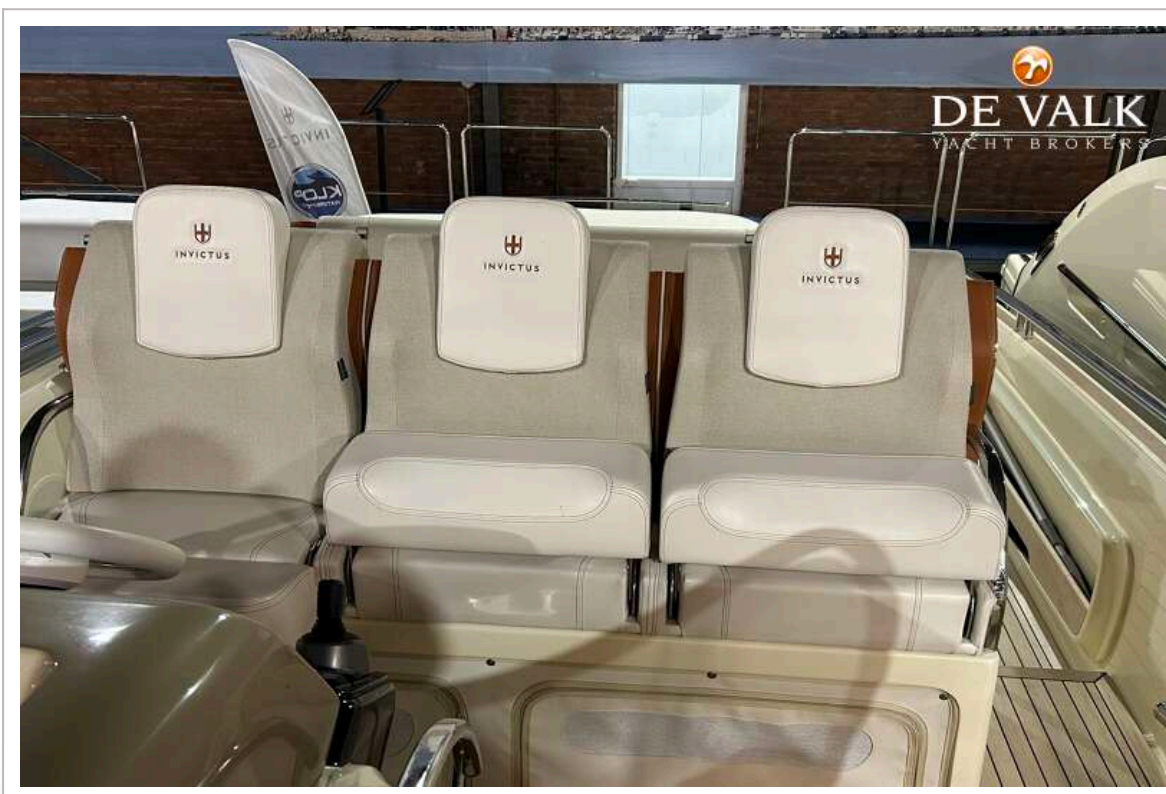
INVICTUS GT 370



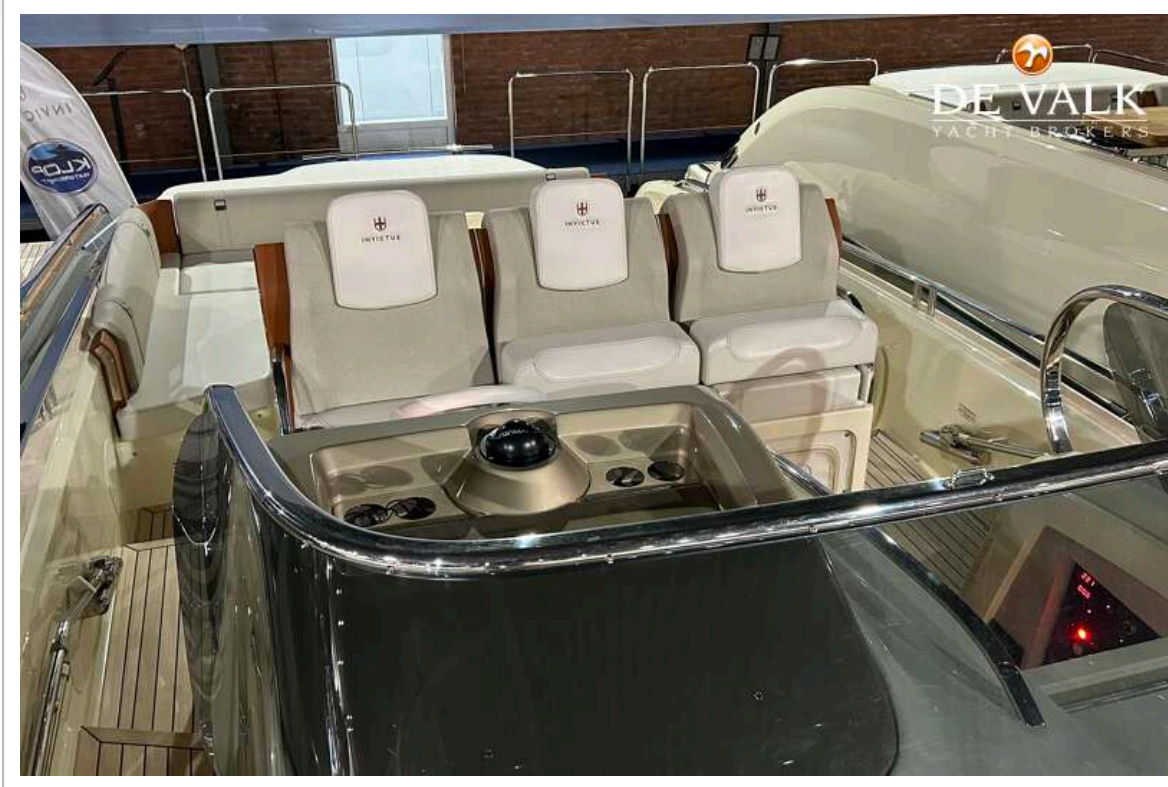
INVICTUS GT 370



INVICTUS GT 370



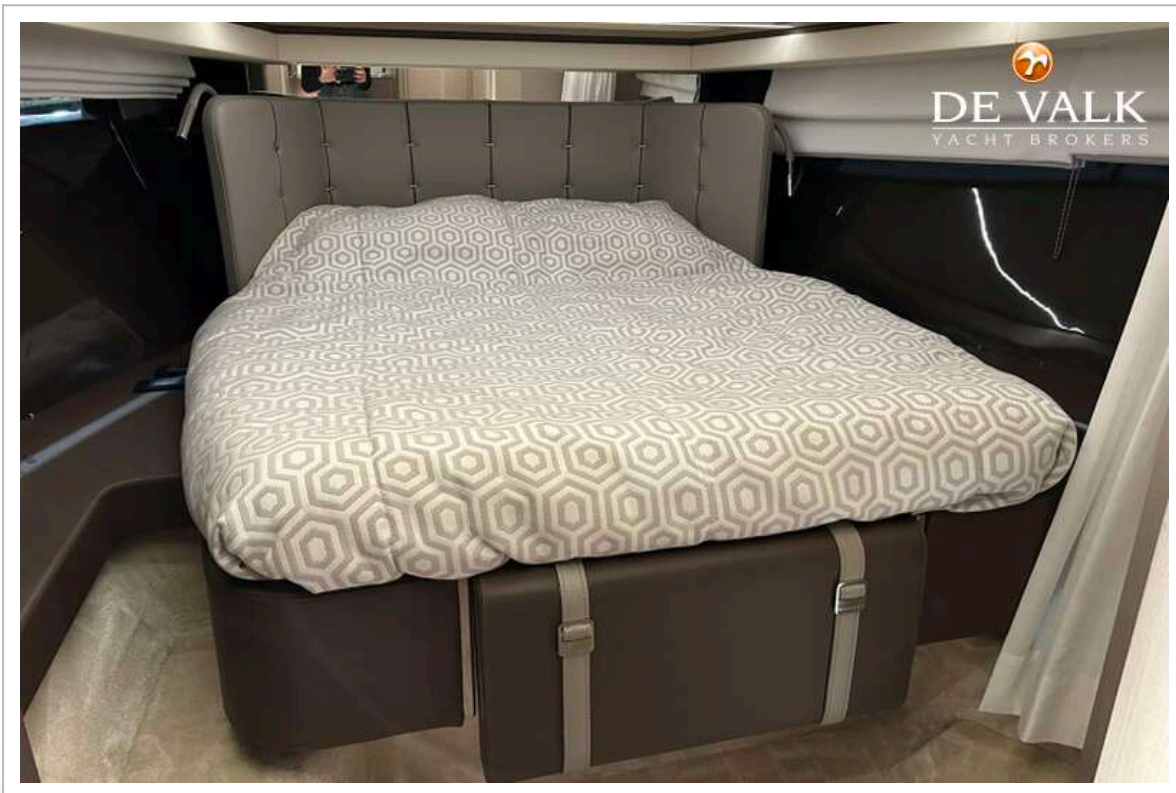
INVICTUS GT 370



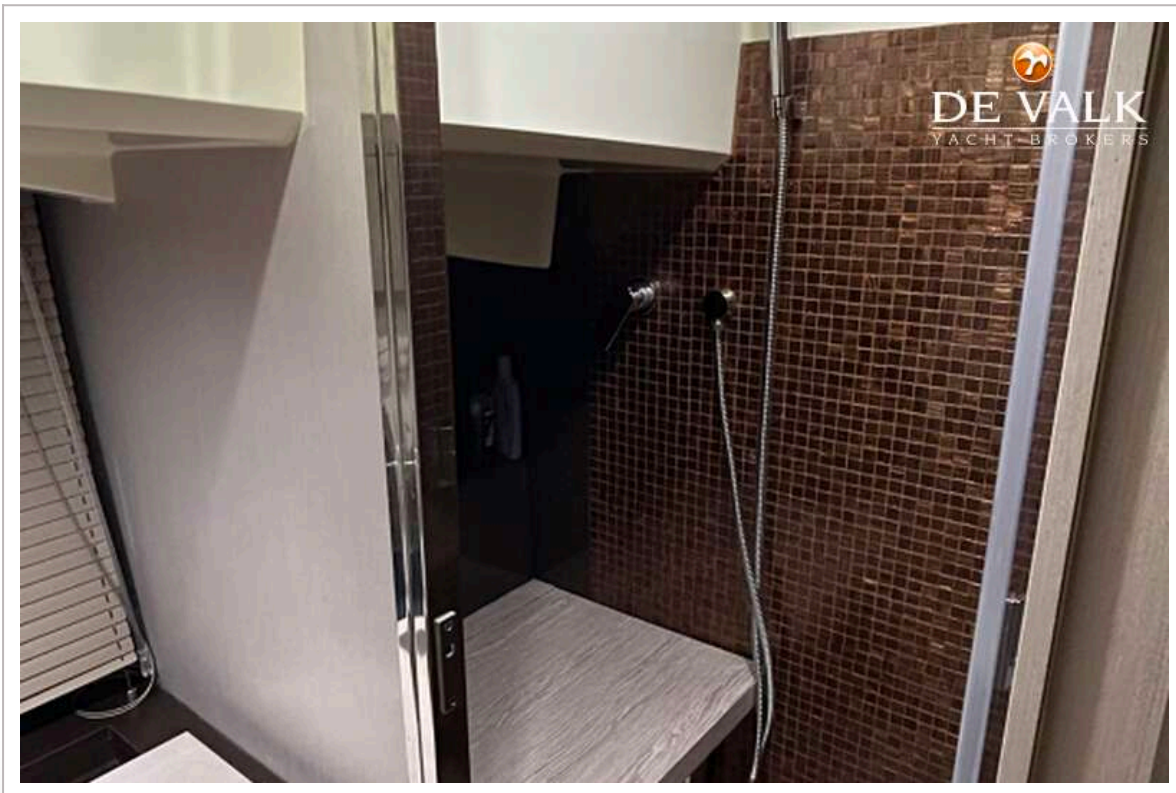
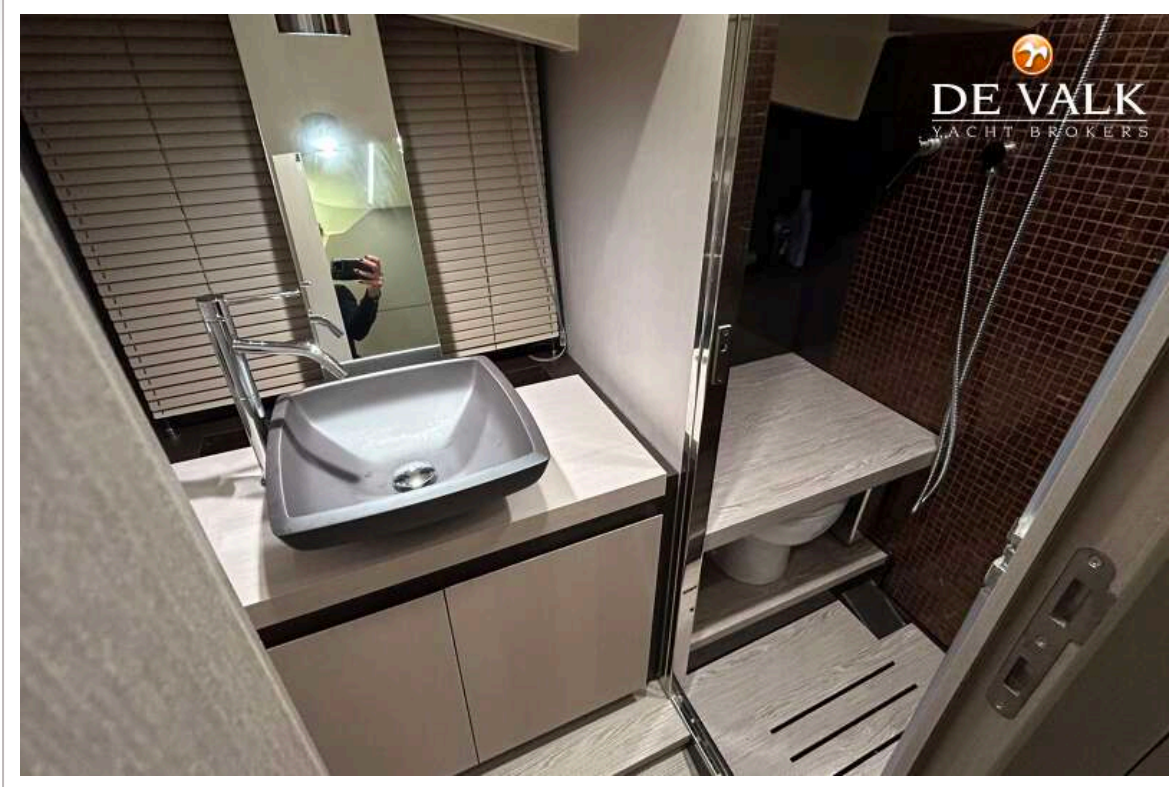
INVICTUS GT 370



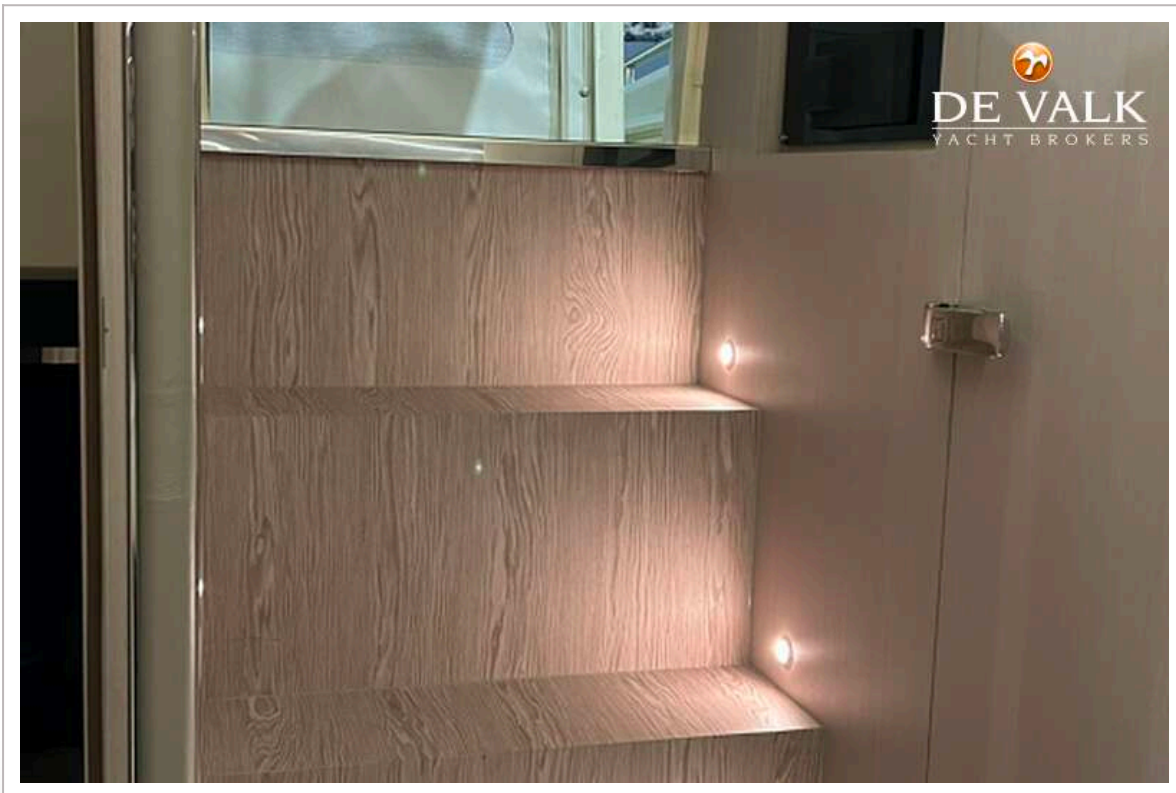
INVICTUS GT 370



INVICTUS GT 370



INVICTUS GT 370



INVICTUS GT 370



INVICTUS GT 370

