



VAN GELDER KRUISER 1750

# VAN GELDER KRUISER 1750

## BROKER'S COMMENTS

This Van Gelder Kruiser 17.50 has remained within the same family since new. The vessel has been carefully used and maintained over the years and is equipped with a range of comfort-enhancing features, including a generator and stabilizers. With three cabins, she offers ample sleeping accommodation for family and guests. In 2025, the hull and superstructure were professionally repainted, and the underwater hull received extensive maintenance. A characterful motor yacht benefiting from significant recent investments.

*Jochem Heijermans*

## SPECIFICATIONS

<b>Dimensions</b>	17.50 x 4.50 x 1.40 (m)	<b>Builder</b>	van Gelder
<b>Built</b>	1978	<b>Cabins</b>	3
<b>Material</b>	Steel	<b>Berths</b>	8
<b>Engine(s)</b>	2 x DAF 615 diesel	<b>Hp/Kw</b>	2 x 175.00 (hp), 128.80 (kw)
<b>Asking price</b>	€ 167.000 (VAT Exempt)	<b>Lying</b>	at sales office

## CONTACT

<b>Sales office</b>	De Valk Sint Annaland B.V.	<b>Telephone</b>	+31 166 601 000
<b>Address</b>	Koelhuisweg 4 4697 RM Sint Annaland NL	<b>E-mail</b>	sintannaland@devalk.nl

## DISCLAIMER

These particulars are given in good faith as supplied but cannot be guaranteed.



# VAN GELDER KRUISER 1750

## GENERAL

<b>Model</b>	VAN GELDER KRUISER 1750
<b>Type</b>	motor yacht
<b>LOA (m)</b>	17,50
<b>Beam (m)</b>	4,50
<b>Draft (m)</b>	1,40
<b>Air draft (m)</b>	3,40
<b>Headroom (m)</b>	1,90
<b>Year built</b>	1978
<b>Launched</b>	1982
<b>Builder</b>	Van Gelder
<b>Country</b>	The Netherlands
<b>Displacement (t)</b>	35
<b>Hull material</b>	steel
<b>Hull colour</b>	green
<b>Hull shape</b>	hard chine
<b>Superstructure material</b>	steel
<b>Rubbing strake</b>	rubber
<b>Deck material</b>	steel
<b>Deck finish</b>	teak
<b>Superstructure deck finish</b>	teak + paint on rooftop
<b>Cockpit deck finish</b>	teak
<b>Antifouling (year)</b>	2025
<b>Window frame</b>	aluminium
<b>Window material</b>	glass
<b>Deckhatch</b>	yes
<b>Portholes</b>	6 x
<b>Insulation</b>	foam plates Tempex
<b>Radar arch</b>	collapsible
<b>Mast can be lowered</b>	electric With wireless remote control
<b>Fuel tank (litre)</b>	steel 2 x 600



# VAN GELDER KRUISER 1750

Level indicator (fuel tank)	yes
Freshwater tank (litre)	steel 2 x 150
Blackwater tank (litre)	yes
Blackwater tank extraction	deck extraction
Wheel steering	chain steering
Inside helm position	yes
Outside helm position	yes
More info on hull	Underwater hull sand blasted 2025
More info on paintwork	Hull + Superstructure painted 2025

## ACCOMMODATION

Cabins	3
Berths	8
Floor	carpet (2022)
Aft deck	yes
Deck saloon	yes
Headroom saloon (m)	1,90
Heating	central hot water Webasto
Aft Cabin	yes
Dinette	yes
Galley	yes
Countertop	tiles
Sink	stainless steel
Cooker	induction 4 burner
Microwave/oven combi	Whirlpool
Fridge	Isotherm with freezer compartment
Hot water system	geyser on Calor Gas
Water pressure system	electrical
Owners cabin	double bed Aft.
Bed length (m)	1,95 x 1,25
Wardrobe	hanging/drawers/shelves



# VAN GELDER KRUISER 1750

<b>Bathroom</b>	separate Aft. starboard side
<b>Toilet</b>	separate
<b>Toilet system</b>	electric
<b>Wash basin</b>	in the bathroom
<b>Shower</b>	separate
<b>Guest cabin 1</b>	bunk bed Aft. portside
<b>Bed length (m)</b>	1,88
<b>Guest cabin 2</b>	v-bed + bunk beds
<b>Bed length (m)</b>	V + bunk beds 1,95
<b>Toilet</b>	separate
<b>Toilet system</b>	electric
<b>Wash basin</b>	at the toilet
<b>Extra info</b>	New curtains 2022

## MACHINERY

<b>No of engines</b>	2
<b>Make</b>	DAF
<b>Type</b>	615
<b>HP</b>	175
<b>kW</b>	128.80
<b>Fuel</b>	diesel
<b>Year installed</b>	1982
<b>Year of overhaul</b>	1982 (Overhauled engines fitted during construction)
<b>Engine cooling system</b>	freshwater heat exchanger
<b>Drive</b>	shaft
<b>Engine controls</b>	bowden cable
<b>Gearbox</b>	yes
<b>Bowthruster</b>	electric
<b>Propeller type</b>	fixed
<b>Propeller blades</b>	3
<b>Propeller shaft material</b>	stainless steel



# VAN GELDER KRUISER 1750

Shaft lubrication	grease
Electric bilge pump	yes
Electrical installation	12/24/220V
Generator	Onan 5 kW
Batteries	6 x (2025)
Battery monitor	Victron
Battery charger	2 x Victron Blue Smart
Battery charger/inverter	Victron Quattro 24/3000/70
Shorepower	with cable
Stabilizers	fin SeaRocq
Extra info	Dual magnetic fuel filtration system with vacuum gauge.

## NAVIGATION

Compass	yes
Depth sounder/log	Simrad IS20
Windset	Simrad IS20
VHF	Sailtron RT144
Autopilot	Robertson
Rudder angle indicator	yes
Radar	Furuno + Simrad
GPS	Philips
Plotter	Simrad CR44
Navigation lights	yes
Searchlight	yes

## EQUIPMENT

Fixed windscreen	Foldable to lower airdraft
Cockpit cover	(2024)
Bathing platform	yes
Boarding ladder	stainless steel
Transom door	yes



# VAN GELDER KRUISER 1750

<b>Anchor</b>	Pool
<b>Anchor chain</b>	yes
<b>Windlass</b>	electrical
<b>Dinghy</b>	(Not included, optional)
<b>Outboard</b>	(Not included, optional)
<b>Davits</b>	steel
<b>Davits controls</b>	electrical
<b>Sea railing</b>	stainless steel
<b>Grab rail (superstructure)</b>	teak
<b>Railing side opening gates</b>	2 x
<b>Lifebuoy</b>	yes
<b>Clearview window</b>	yes
<b>Horn</b>	yes
<b>Fenders</b>	yes
<b>Mooring lines</b>	yes
<b>TV</b>	yes
<b>Radio-cd player</b>	yes
<b>Speakers in salon</b>	yes
<b>Clock - barometer</b>	yes



# VAN GELDER KRUISER 1750



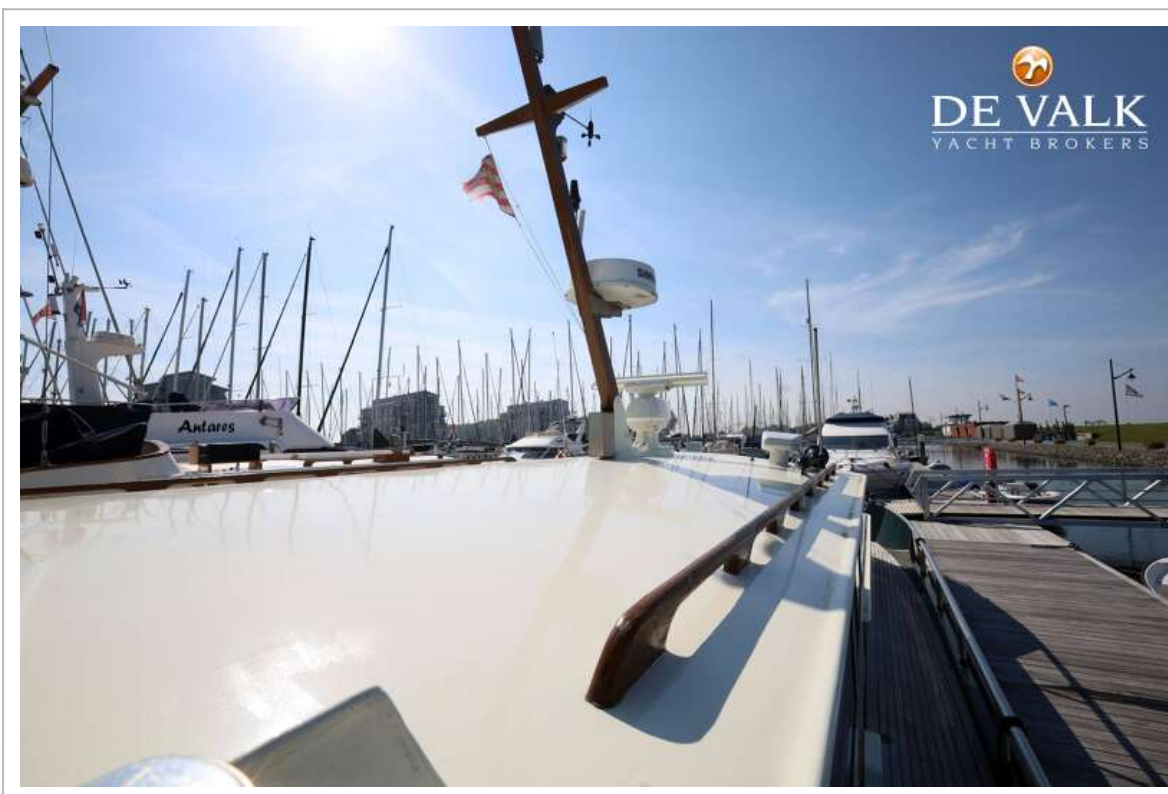
# VAN GELDER KRUISER 1750



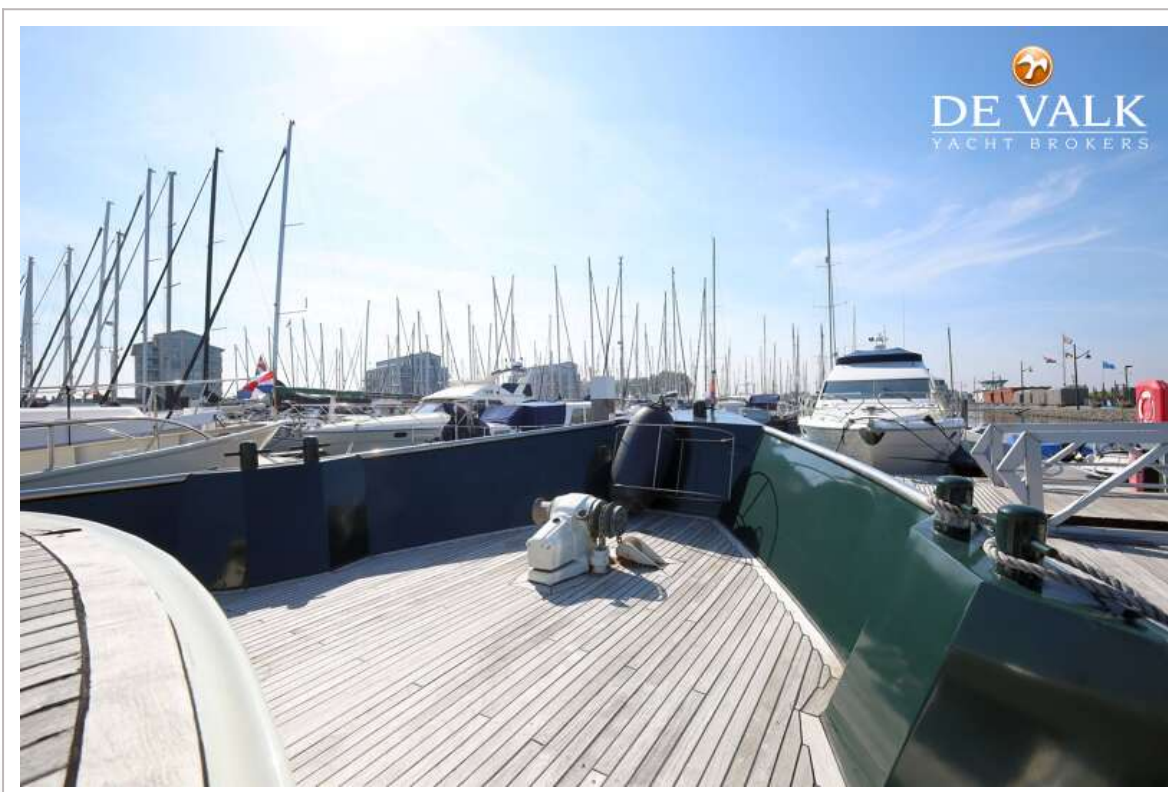
# VAN GELDER KRUISER 1750



# VAN GELDER KRUISER 1750



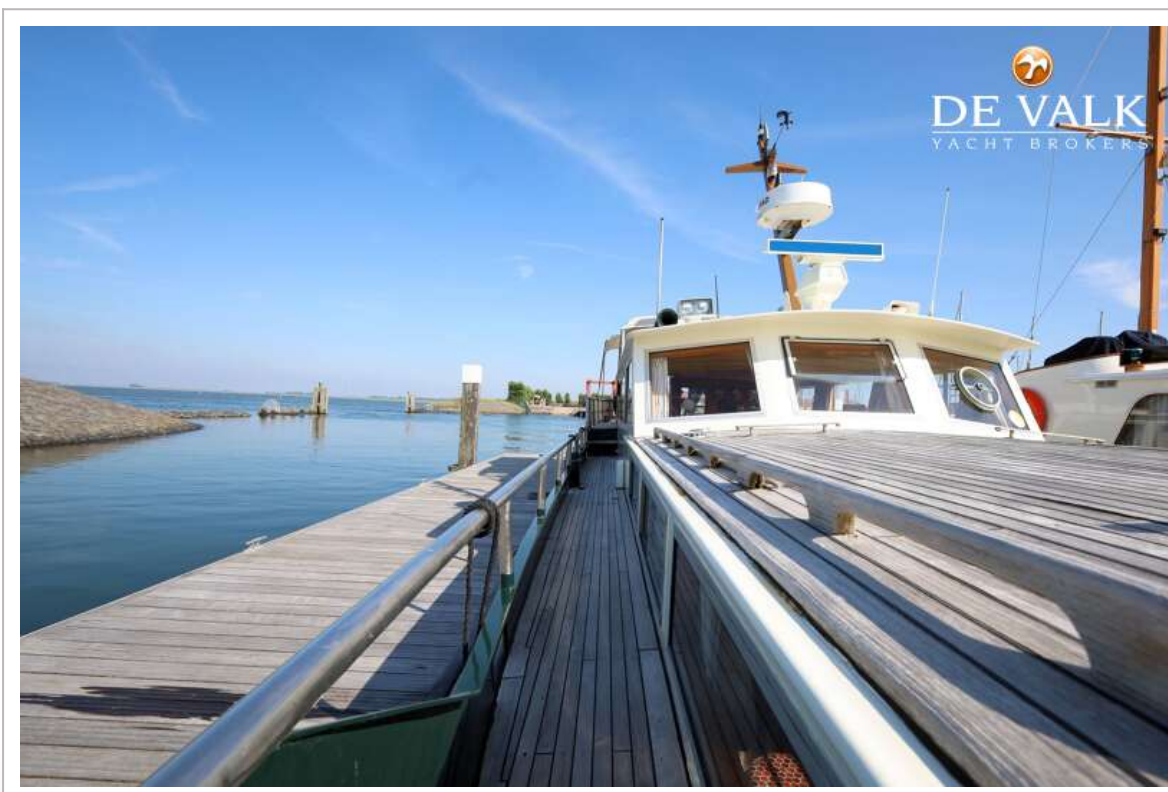
# VAN GELDER KRUISER 1750



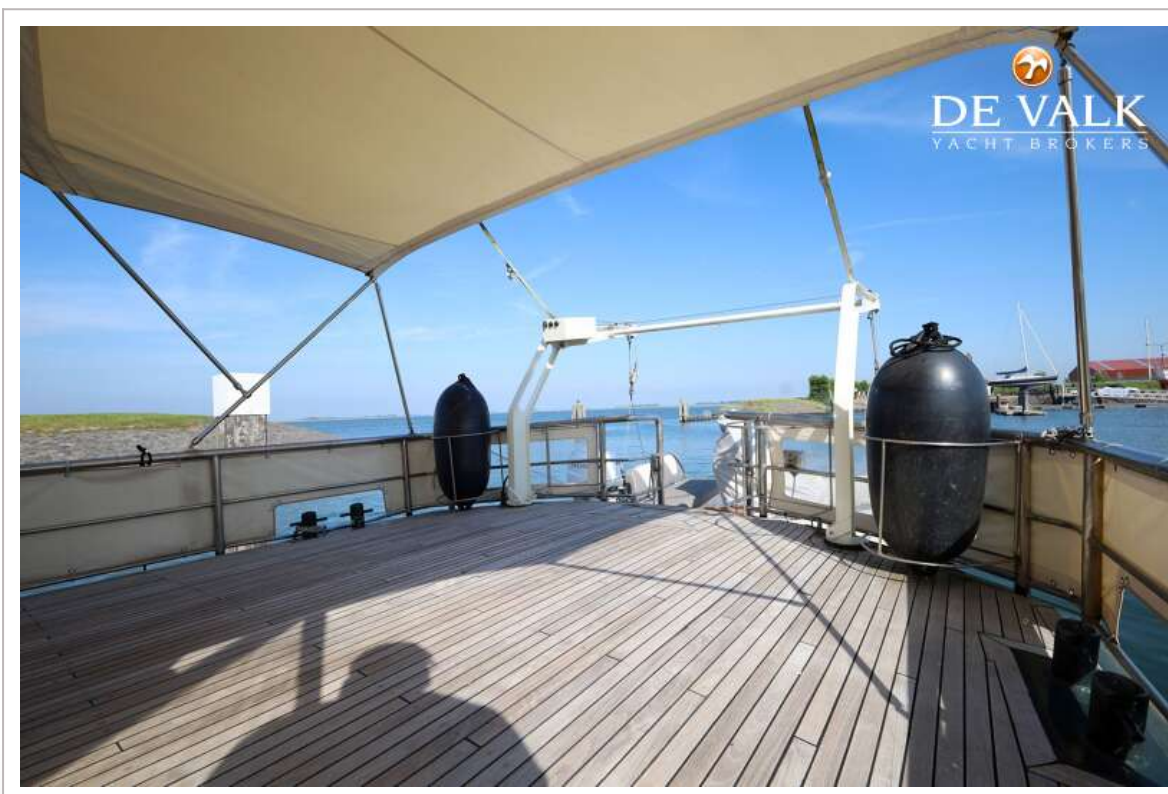
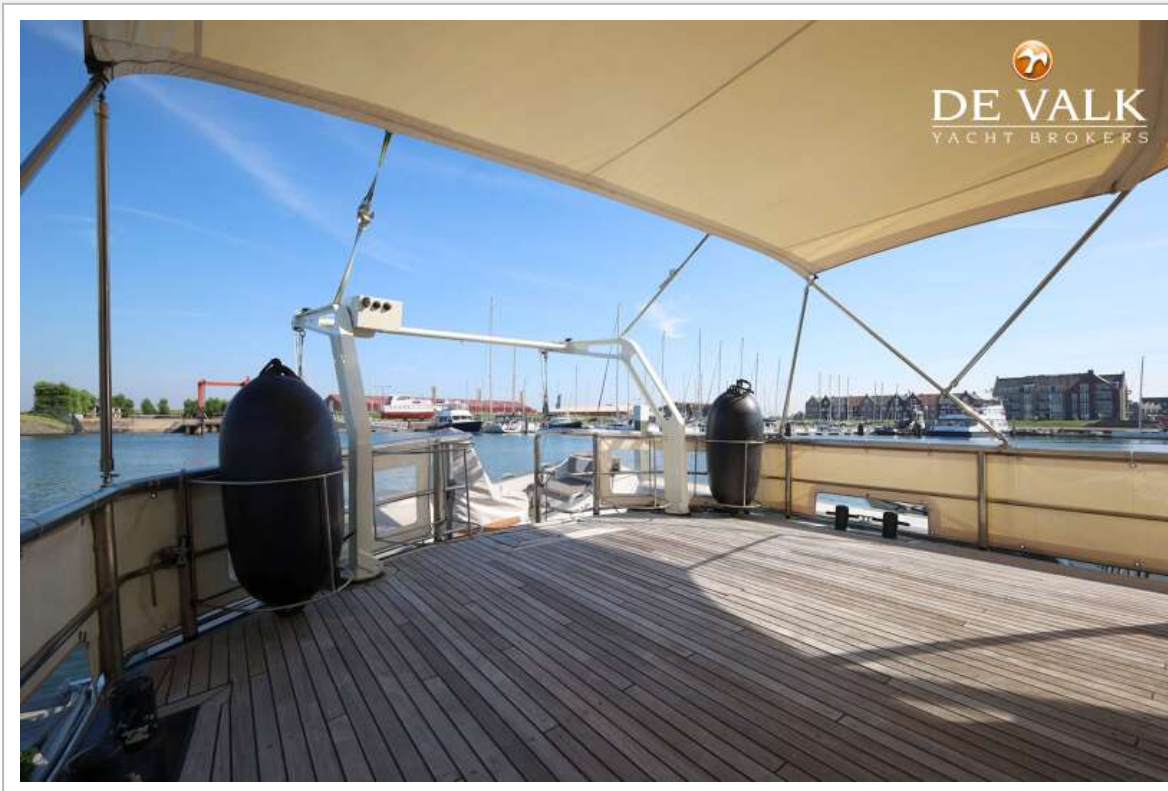
# VAN GELDER KRUISER 1750



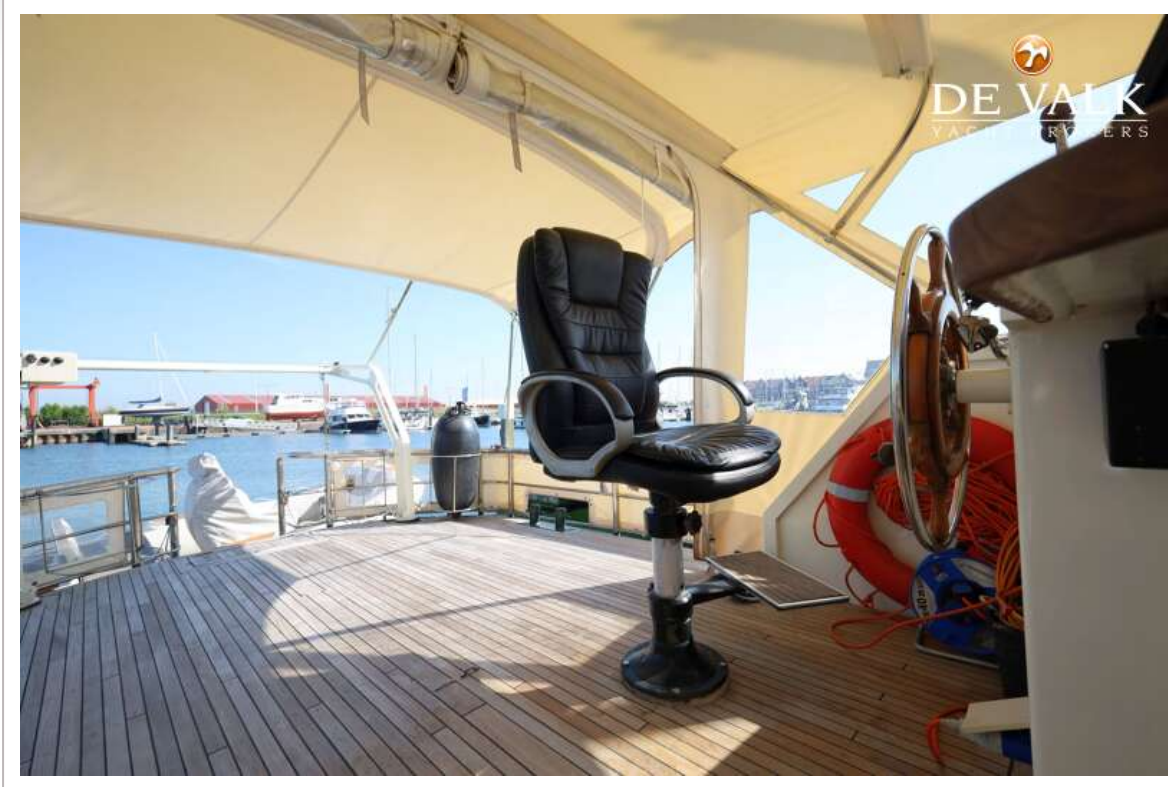
# VAN GELDER KRUISER 1750



# VAN GELDER KRUISER 1750



# VAN GELDER KRUISER 1750



# VAN GELDER KRUISER 1750



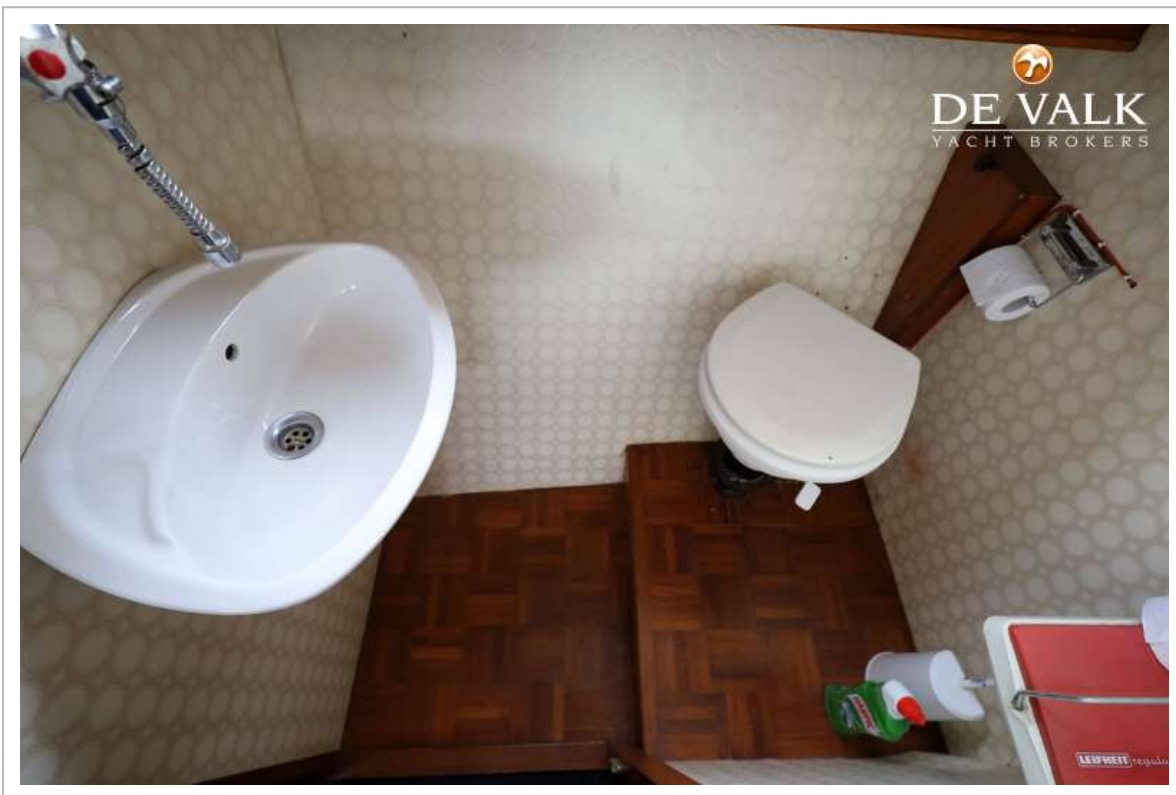
# VAN GELDER KRUISER 1750



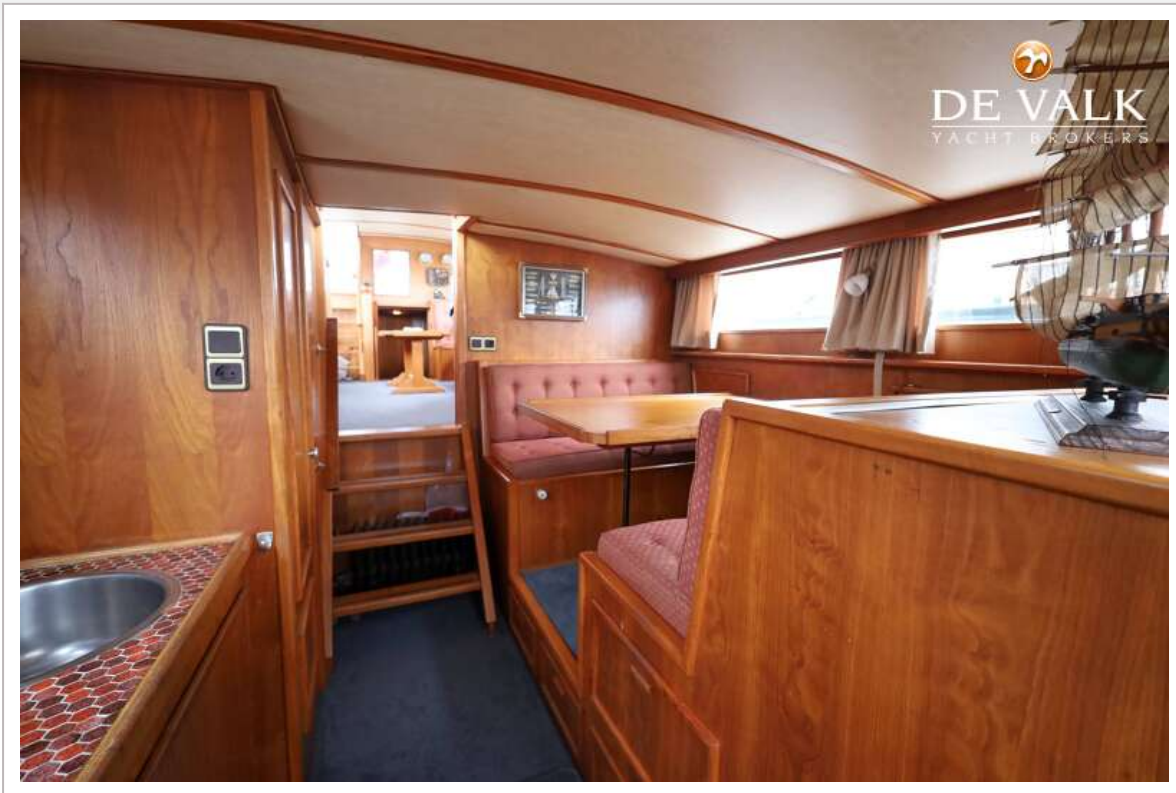
# VAN GELDER KRUISER 1750



# VAN GELDER KRUISER 1750



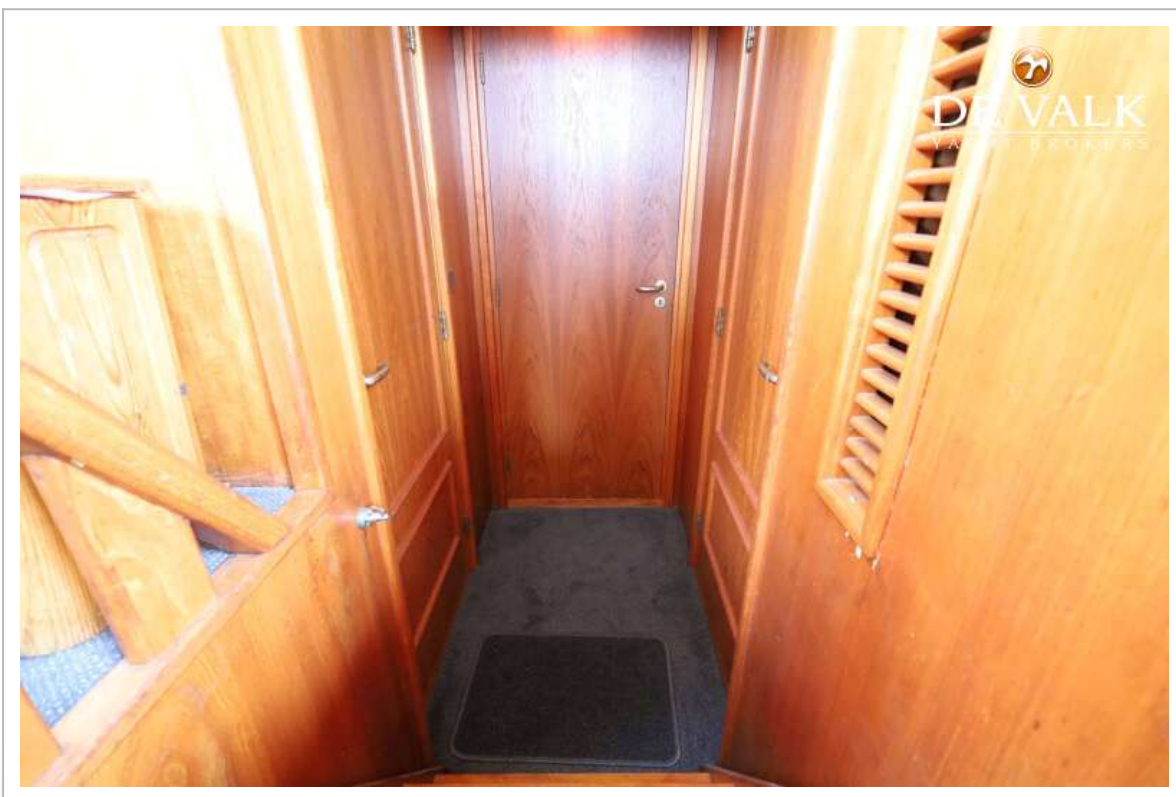
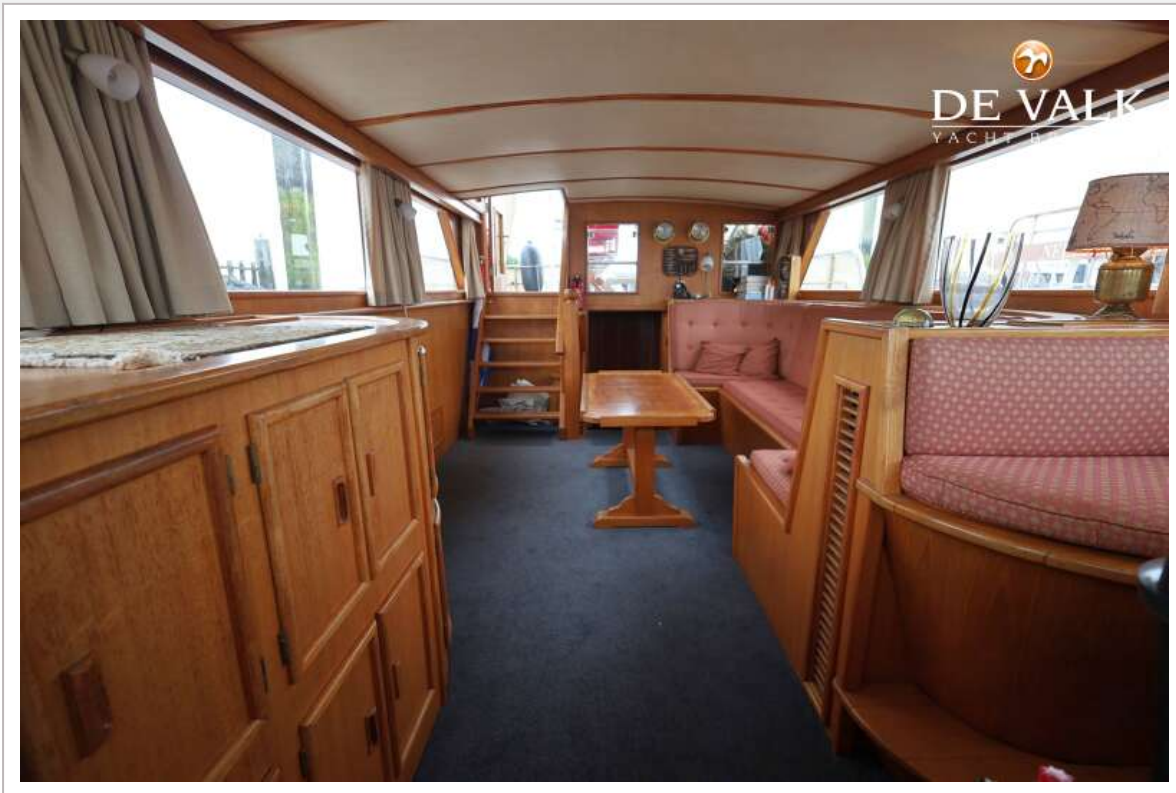
# VAN GELDER KRUISER 1750



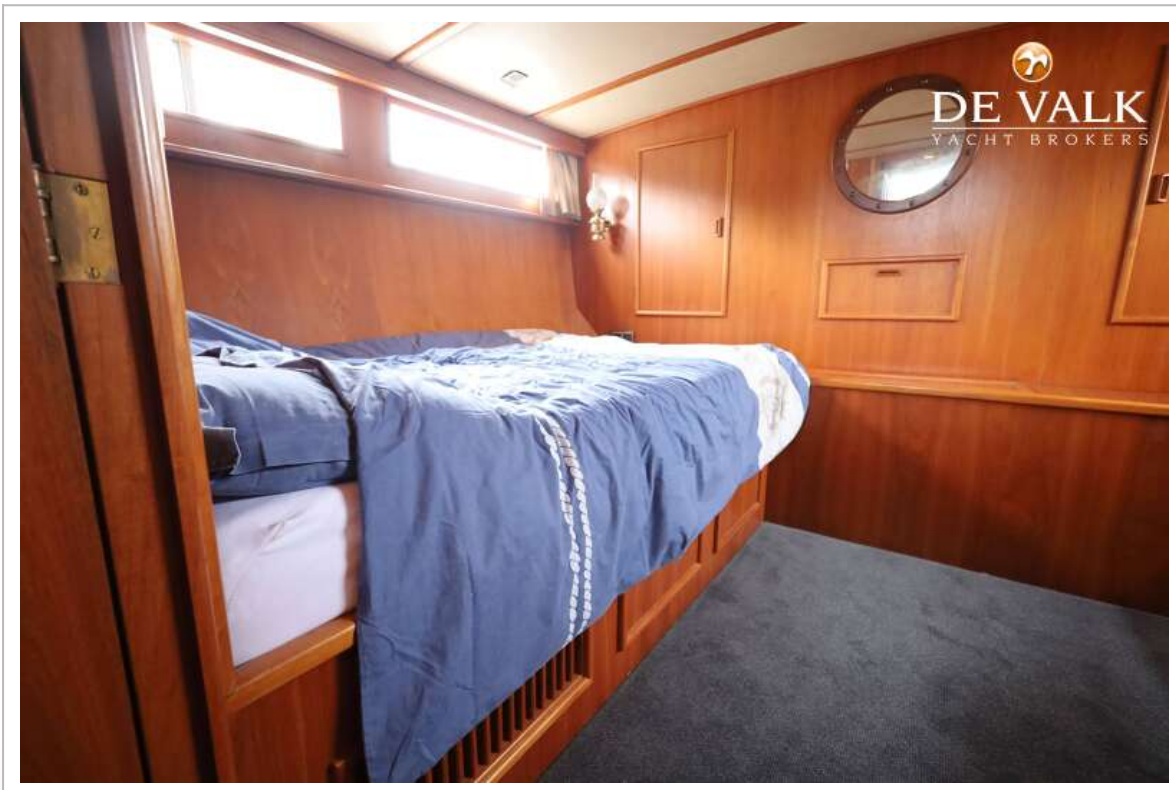
# VAN GELDER KRUISER 1750



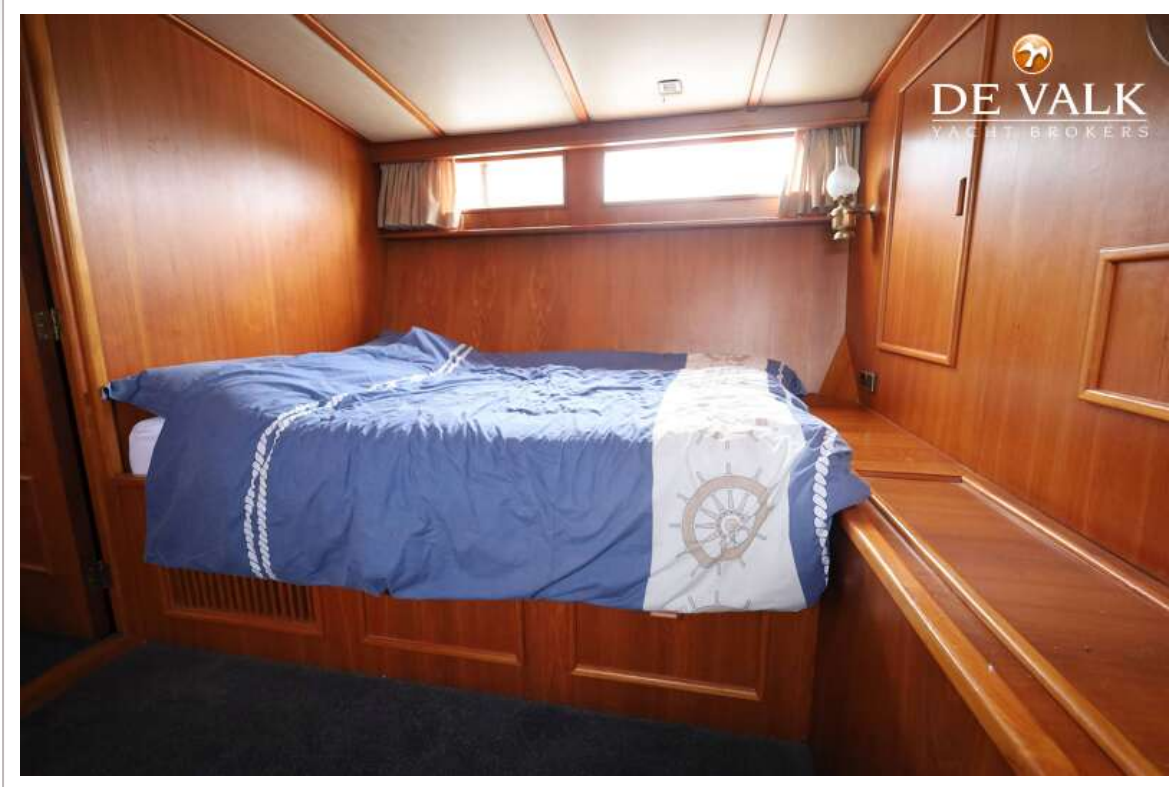
# VAN GELDER KRUISER 1750



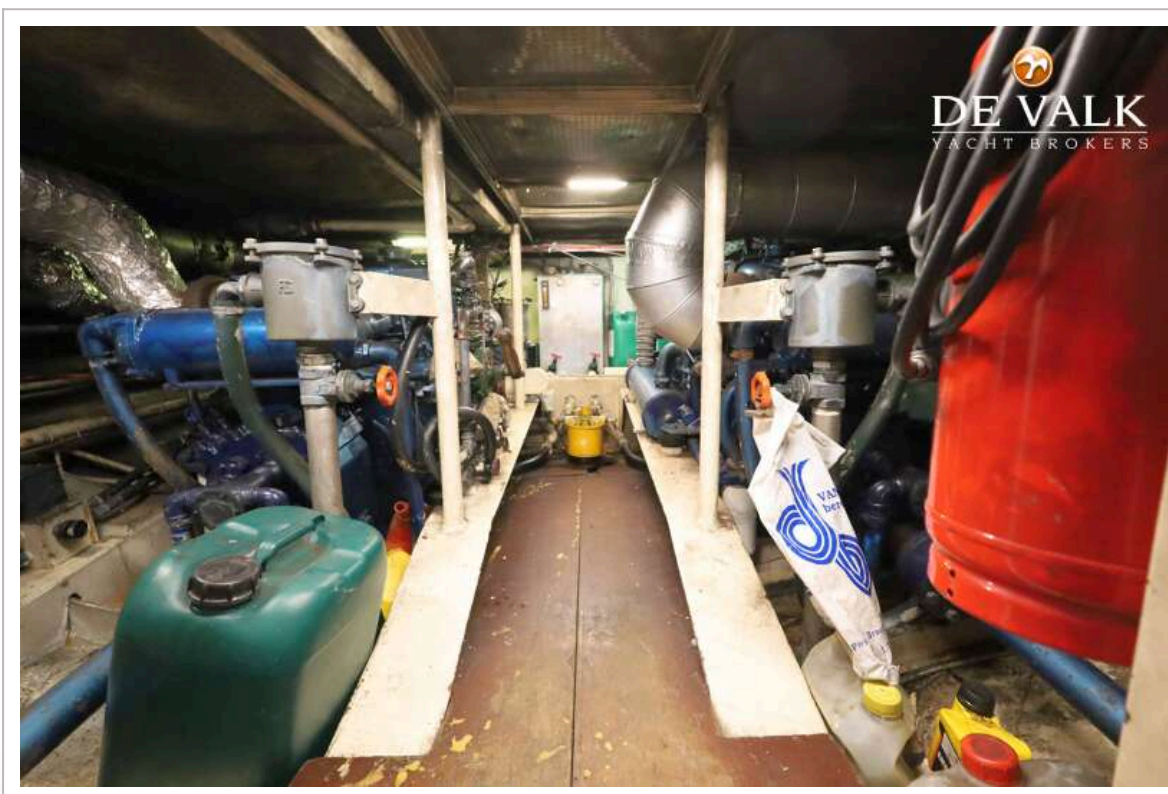
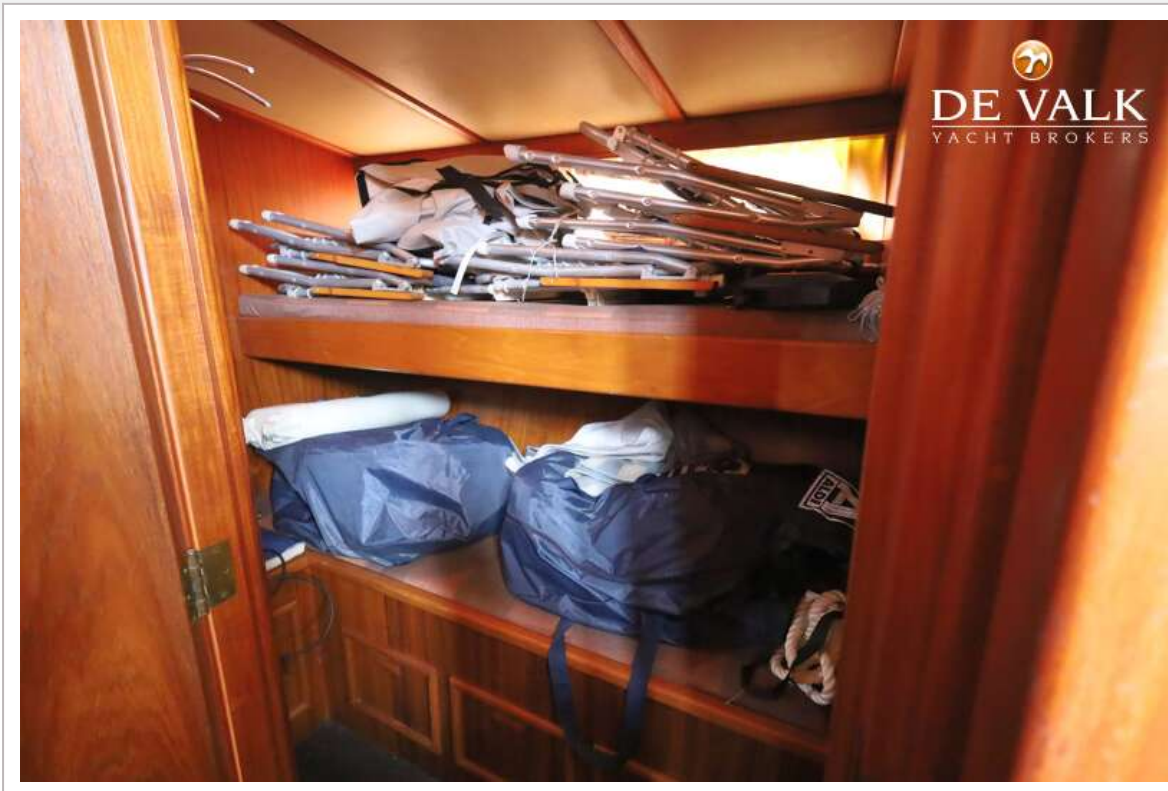
# VAN GELDER KRUISER 1750



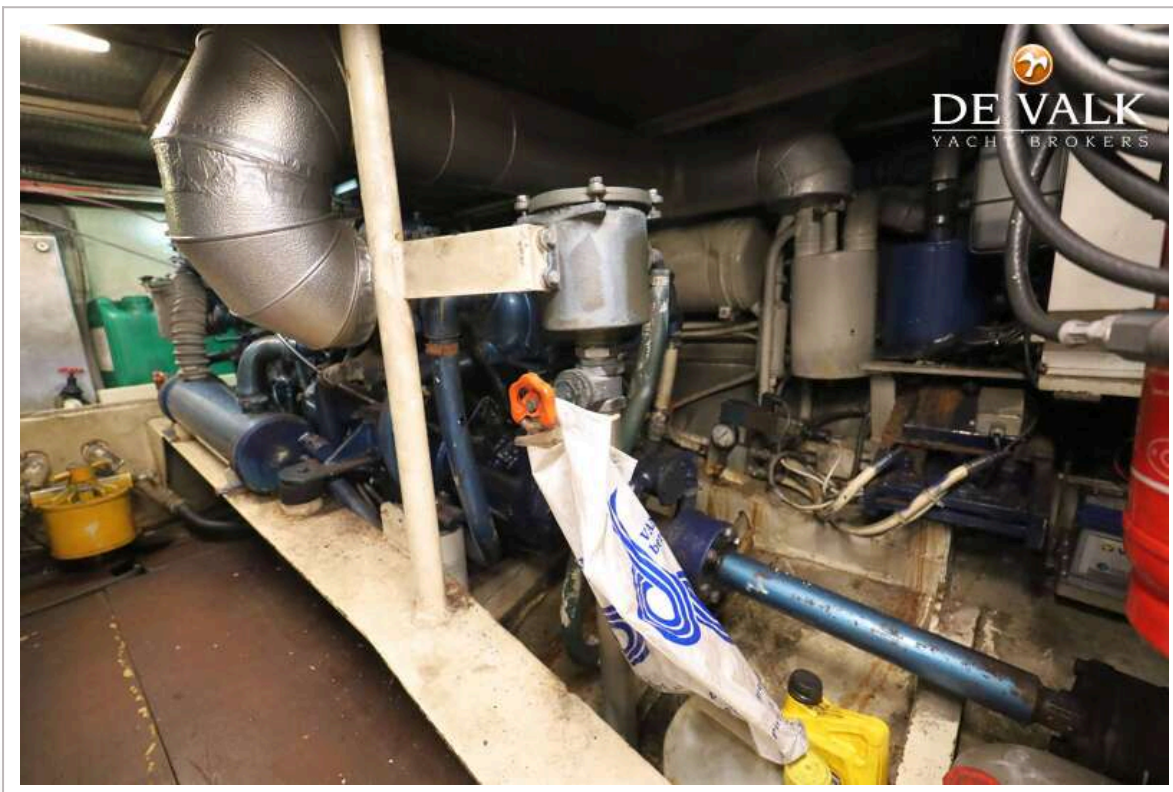
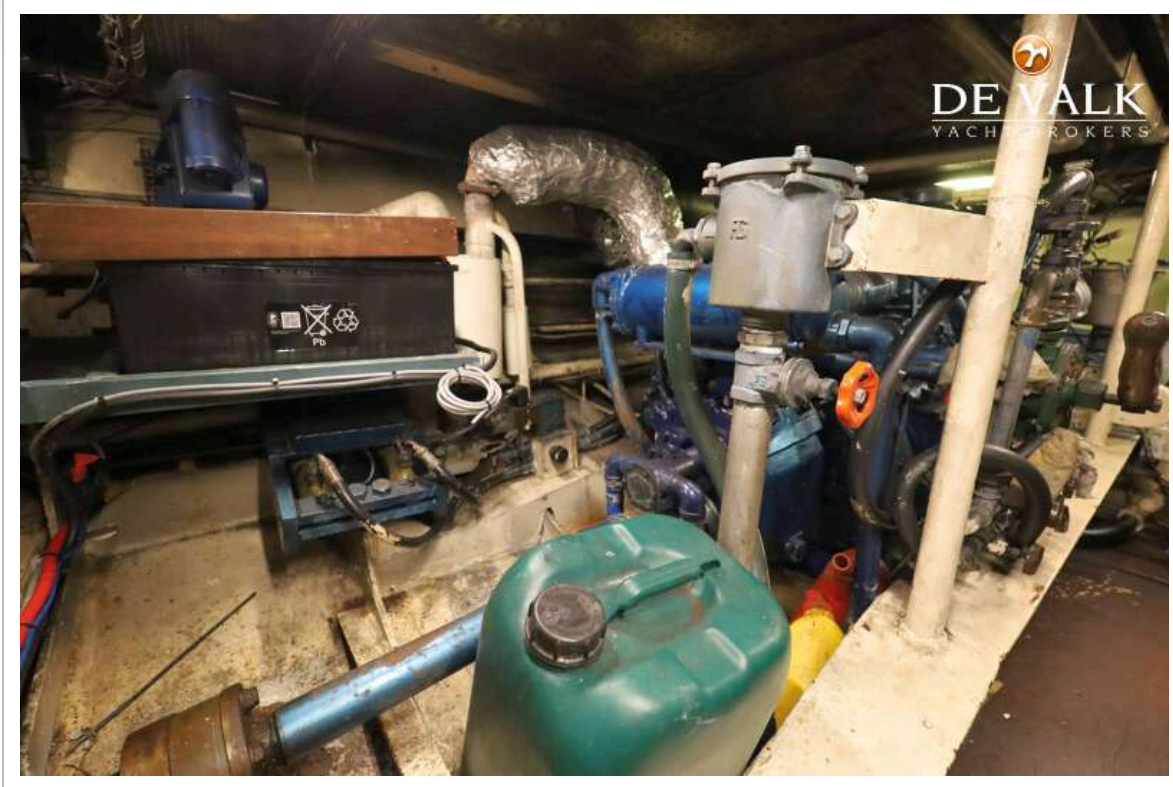
# VAN GELDER KRUISER 1750



# VAN GELDER KRUISER 1750



# VAN GELDER KRUISER 1750



## FREQUENTLY ASKED QUESTIONS



DE VALK

**What is the reason for selling your yacht?**

*Unfortunately, we do not have enough time to fully enjoy the boat.*

**How many owners has your yacht had and when?**

*The yacht has always been in the family, first my father's, now mine.*

**What can you tell about the history and cruising area of your yacht?**

*The entire Netherlands, from the waters of Zeeland to the Wadden and the North Sea, Belgian inland waters and the North Sea, France and Germany (Rhine and Moselle).*

**Why did you choose this yacht when you bought it?**

*Solid, Spacious and beautiful appearance.*

**What is the special meaning of the name of the yacht for you?**

*Linked to the family, Brand – Astrid – Richard.*

**Has your yacht ever been used for charter? And if so, when?**

*No.*

**What can you tell about the sailing characteristics of your yacht?**

*Very stable due to stabilizers, easy to steer thanks to 2 motors (propellers) and bow thruster.*

**What did you do with your yacht during the winter?**

*Located in fresh water during the winter period (in the harbor of Tholen in recent years).*

**What kind of maintenance or renewals have been carried out (with documentation as prove)?**

*New canopy (tent in 2024), renew electrical system and paint hull and superstructure in 2025.*

**What are, according to you, future points of attention with regard to the maintenance of your yacht?**

*No special issues, only routine maintenance.*

**Which four keywords would you use to describe your yacht?**

*Spacious, stable, comfortable, seaworthy.*

