



AMER F100

AMER F100

BROKER'S COMMENTS

The Amer F100 is a luxury motor yacht measuring almost 30 meters in length, known for its Glass Cabin variant, this superyacht combines modern, sustainable design with incredible natural light. This Amer F100 has been completely refitted, launched April 2026: complete painting, hull and superstructure, maintenance Engines, generators, AC systems, on-board systems and instrumentation as well as external upholstery, Teak and more. This Amer F100 is in excellent condition.

Valerio Biondi

SPECIFICATIONS

| | | | |
|---------------------|---------------------------------|----------------|----------------------------------|
| Dimensions | 29.60 x 7.00 x 1.95 (m) | Builder | Permare / Amer Yachts |
| Built | 2020 | Cabins | 5 |
| Material | GRP | Berths | 10 |
| Engine(s) | 4 x Volvo Penta IPS 1200 diesel | Hp/Kw | 4 x 3,200.00 (hp), 2,355.20 (kw) |
| Asking price | € 4.500.000 (VAT Paid) | Lying | elsewhere / Not at sales office |

CONTACT

| | | | |
|---------------------|--|------------------|-------------------|
| Sales office | De Valk Antibes | Telephone | +33 492 91 0202 |
| Address | 2, Avenue de Verdun 06600 Antibes FR | E-mail | antibes@devalk.nl |

DISCLAIMER

These particulars are given in good faith as supplied but cannot be guaranteed.



AMER F100

GENERAL

| | |
|-------------------------------------|--|
| Model | AMER F100 |
| Type | motor yacht |
| LOA (m) | 29,60 |
| Beam (m) | 7,00 |
| Draft (m) | 1,95 |
| Year built | 2020 |
| Builder | Permare / Amer Yachts |
| Country | Italy |
| Designer | Interior: Wilmotte & Associates |
| Displacement (t) | 72 |
| CE norm | A |
| Hull material | GRP |
| Hull colour | white |
| Hull shape | V-shaped hull |
| Superstructure material | GRP |
| Deck material | teak |
| Portholes | yes |
| Flybridge | Spacious, with lounge areas and a jacuzzi |
| Radar arch | yes |
| Fuel tank (litre) | 8000 |
| Level indicator (fuel tank) | yes |
| Freshwater tank (litre) | 1800 |
| Level indicator (freshwater) | yes |
| Blackwater tank (litre) | yes |
| Level indicator (blackwater) | yes |
| Greywater tank (litre) | yes |
| Level indicator (greywater) | yes |
| Inside helm position | yes |
| Flybridge helm position | yes |
| More info on paintwork | Complete painting, hull and superstructure, April 2026 |



ACCOMMODATION

| | |
|--------------------------|---------------------|
| Cabins | 5 |
| Berths | 10 |
| Crew cabin | 3 |
| Crew berths | 5 |
| Pilot house | yes |
| Saloon | yes |
| Air-conditioning | Condaria |
| Navigation center | yes |
| Dining room | yes |
| Sliding door to aft deck | yes |
| Galley | yes |
| Countertop | yes |
| Sink | yes |
| Cooker | induction |
| Oven | yes |
| Microwave/oven combi | yes |
| Fridge | yes |
| Freezer | yes |
| Wine cooler | yes |
| Hot water system | yes |
| Water pressure system | yes |
| Dishwasher | yes |
| Owners cabin | double bed |
| Bed length (m) | 2 |
| Wardrobe | drawers and shelves |
| Bathroom | en suite |
| Toilet | en suite |
| Toilet system | electric |
| Wash basin | in the bathroom |
| Shower | en suite |



AMER F100

| | |
|-----------------|---------------------|
| Jacuzzi | On flybridge |
| Guest cabin 1 | double bed |
| Bed length (m) | 2 |
| Wardrobe | drawers and shelves |
| Bathroom | en suite |
| Toilet | en suite |
| Toilet system | electric |
| Wash basin | in the bathroom |
| Shower | en suite |
| Guest cabin 2 | double bed |
| Bed length (m) | 2 |
| Wardrobe | drawers and shelves |
| Bathroom | en suite |
| Toilet | en suite |
| Toilet system | electric |
| Wash basin | in the bathroom |
| Shower | en suite |
| Guest cabin 3 | double bed |
| Bed length (m) | 2 |
| Wardrobe | drawers and shelves |
| Bathroom | yes |
| Toilet | en suite |
| Toilet system | electric |
| Wash basin | yes |
| Shower | yes |
| Guest cabin 4 | double bed |
| Bed length (m) | 2 |
| Crew cabin(s) | 3 |
| Bathroom (crew) | yes |
| Toilet (crew) | yes |
| Toilet system | electric |
| Wash basin | in the bathroom |



| | |
|-----------------|-----|
| Shower (crew) | yes |
| Washing machine | yes |
| Flybridge | yes |
| Wet bar | yes |
| Tender garage | yes |

MACHINERY

| | |
|---------------------------|----------------------|
| No of engines | 4 |
| Make | Volvo Penta |
| Type | IPS 1200 |
| HP | 3200 |
| kW | 2355.20 |
| Fuel | diesel |
| Maximum speed (kn) | 28 |
| Cruising speed (kn) | 24 |
| Range (nm) | 450 |
| Engine hours | 2000 |
| Engine cooling system | yes |
| Drive | IPS |
| Engine controls | yes |
| Bowthruster | hydraulic CMC Marine |
| Manual bilge pump | yes |
| Electric bilge pump | yes |
| Bilge alarm | yes |
| Generator | KW Fischer Panda |
| Running hours generator | 2242 |
| Generator 2 | KW Fischer Panda |
| Running hours generator 2 | 2650 |
| Batteries | yes |
| Start battery | yes |
| Service battery | yes |



| | |
|-------------------------|------------|
| Navigation Battery | yes |
| Electric engine battery | yes |
| Generator battery | yes |
| Bowthruster battery | yes |
| Battery charger | yes |
| Shorepower | with cable |
| Watermaker | 200 L/h |
| Stabilizers | Seakeeper |

NAVIGATION

| | |
|-------------------|-----------|
| Compass | yes |
| Depth sounder/log | yes |
| VHF | yes |
| Autopilot | yes |
| Radar | Raymarine |
| GPS | Simrad |
| Plotter | Simrad |
| AIS transceiver | yes |
| Navigation lights | yes |
| Searchlight | yes |

EQUIPMENT

| | |
|------------------|-----|
| Cockpit cushions | yes |
| Cockpit table | yes |
| Cockpit chairs | yes |
| Bathing platform | yes |
| Boarding ladder | yes |
| Gangway | yes |
| Anchor | yes |
| Anchor chain | yes |
| Horn | yes |



| | |
|-------------------|-----|
| Fenders | yes |
| Mooring lines | yes |
| TV | yes |
| Radio | yes |
| Cockpit speakers | yes |
| Speakers in salon | yes |



AMER F100



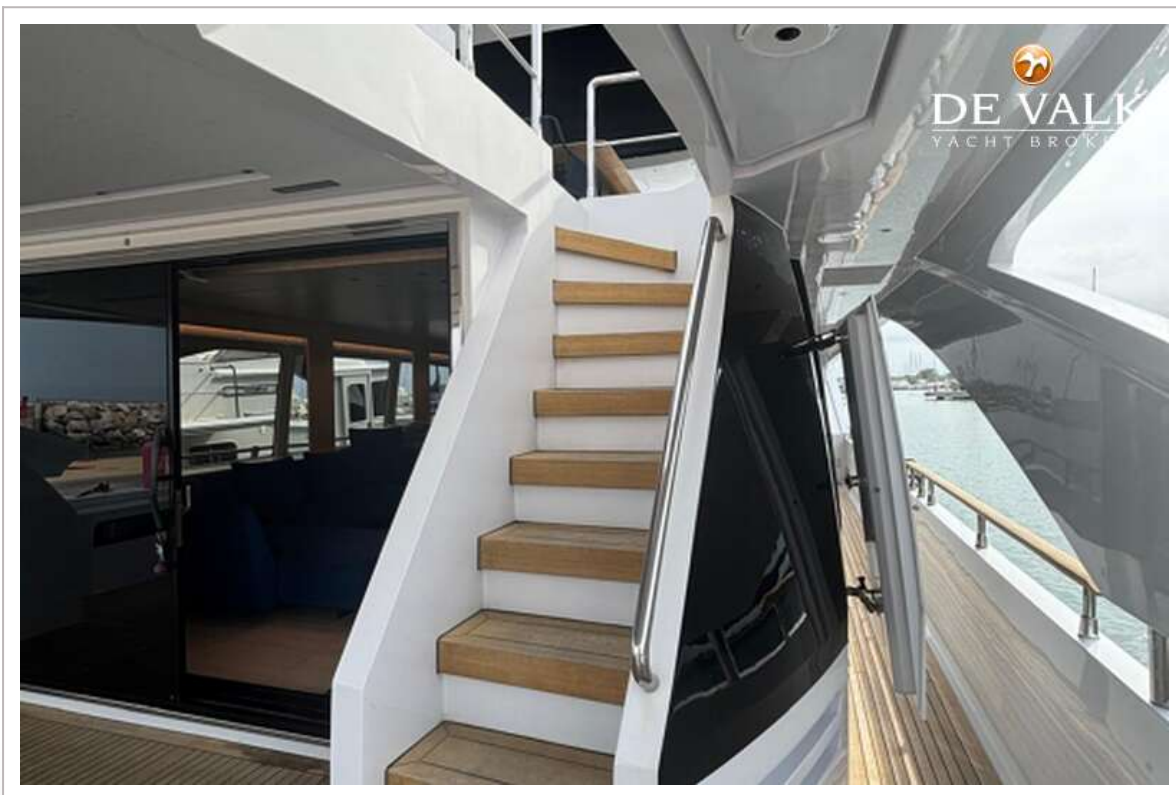
AMER F100



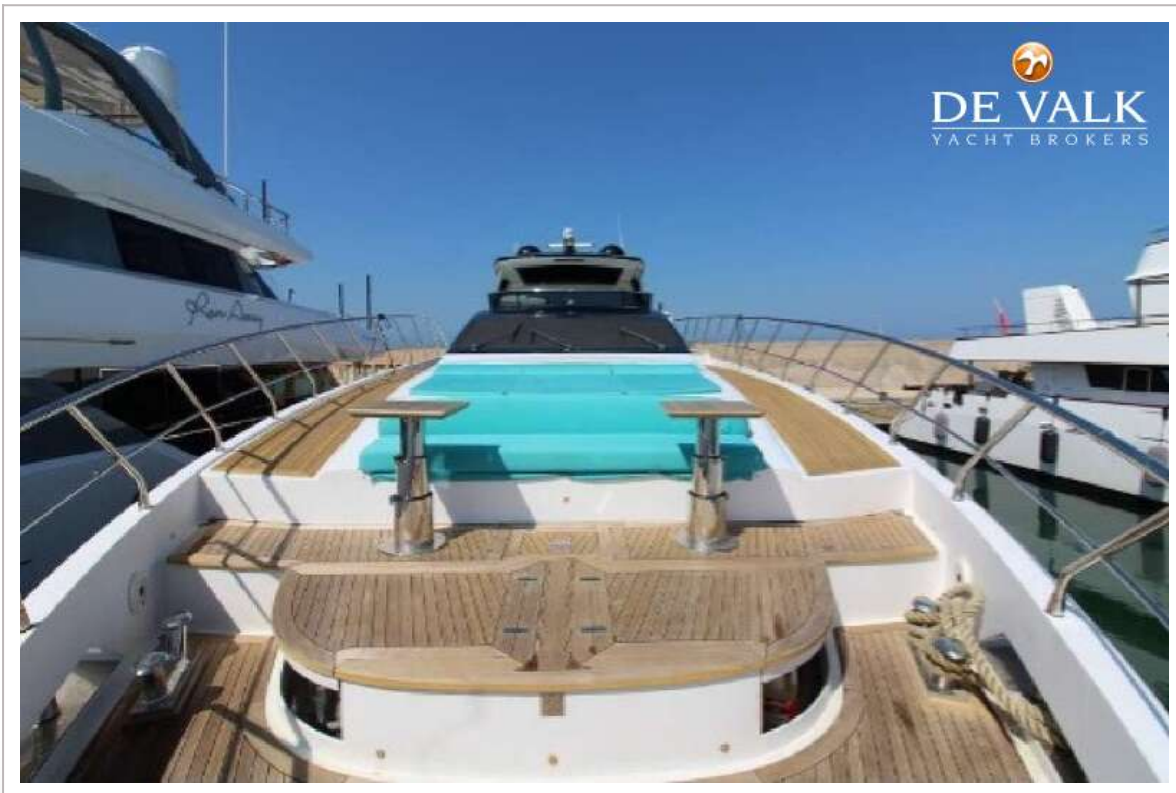
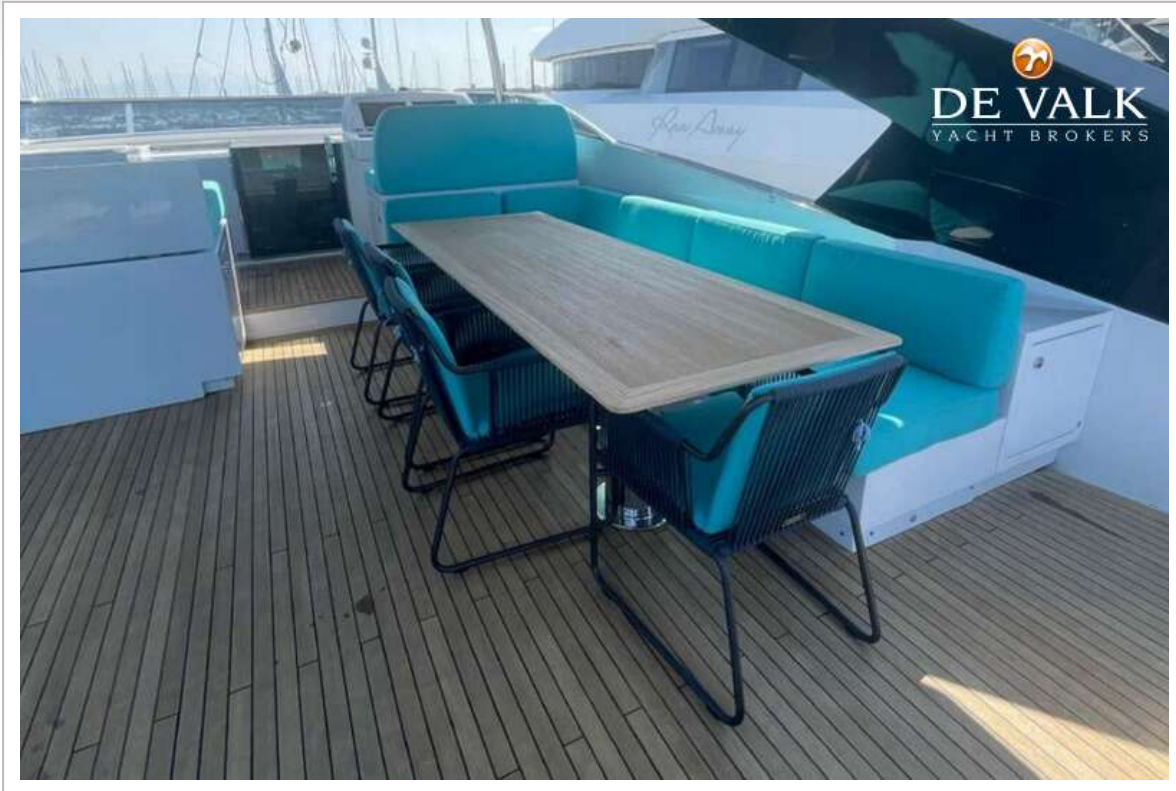
AMER F100



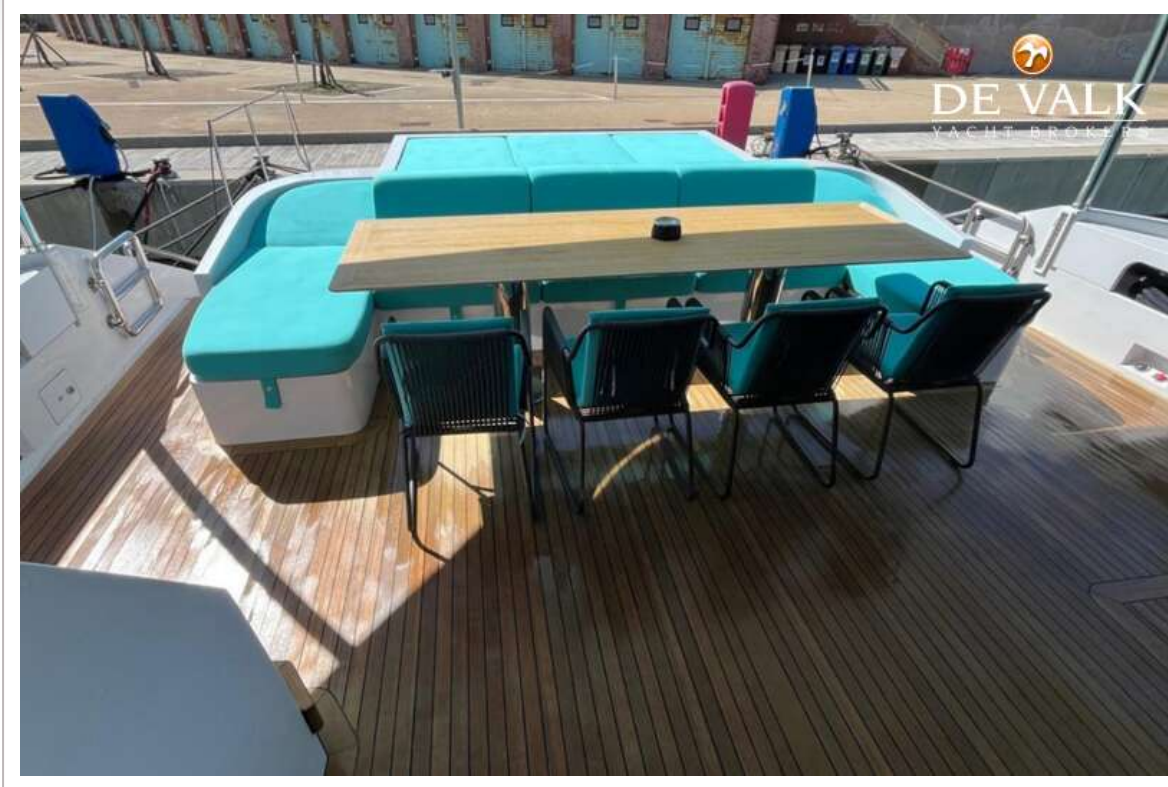
AMER F100



AMER F100



AMER F100



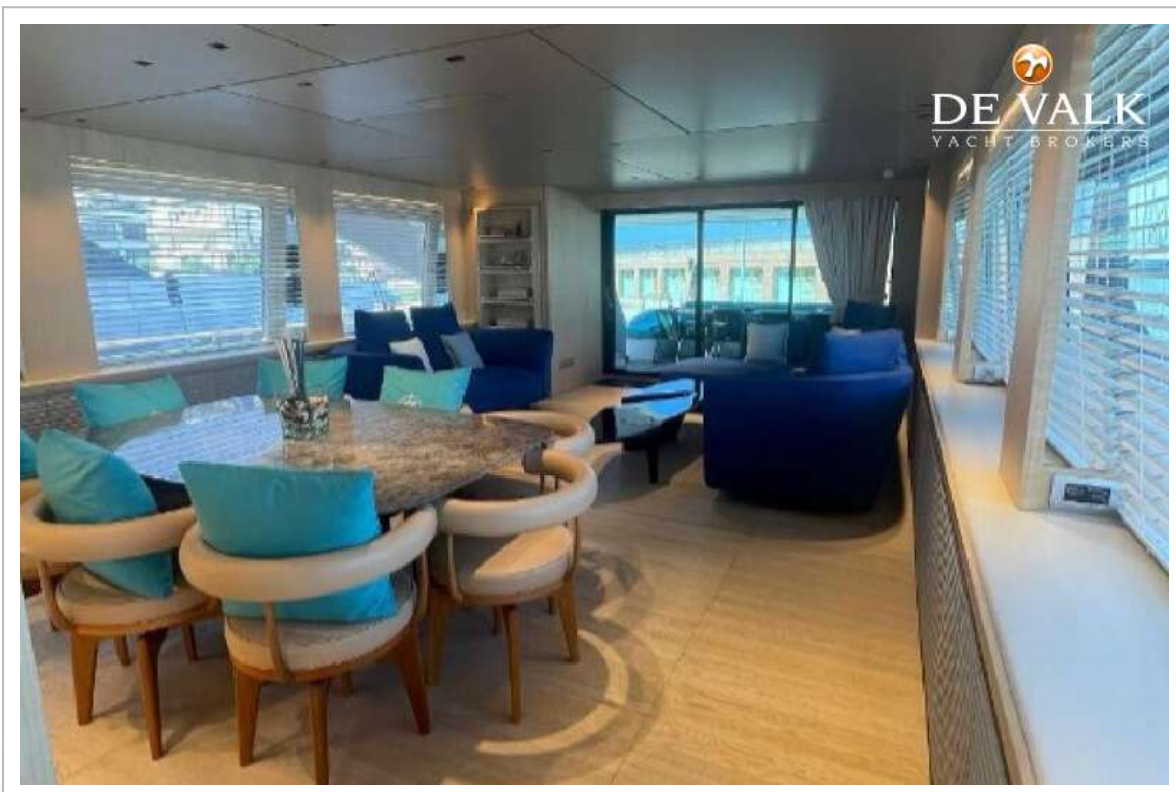
AMER F100



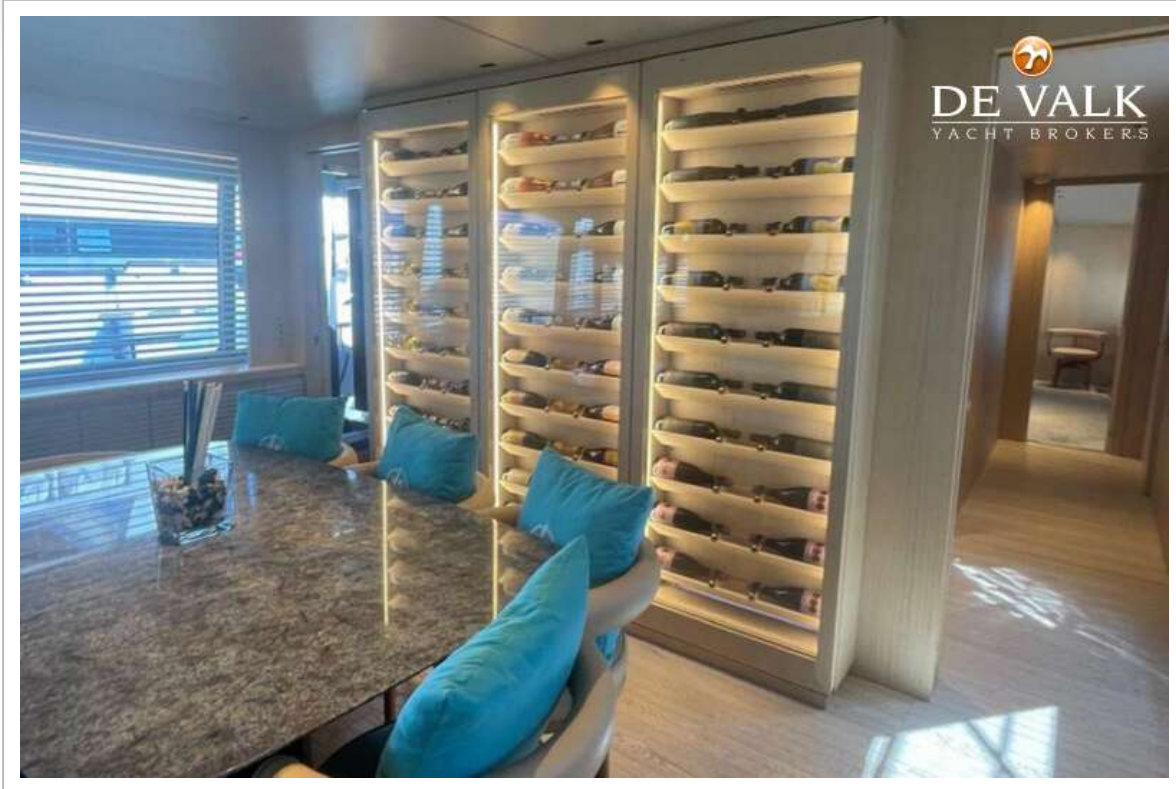
AMER F100



AMER F100



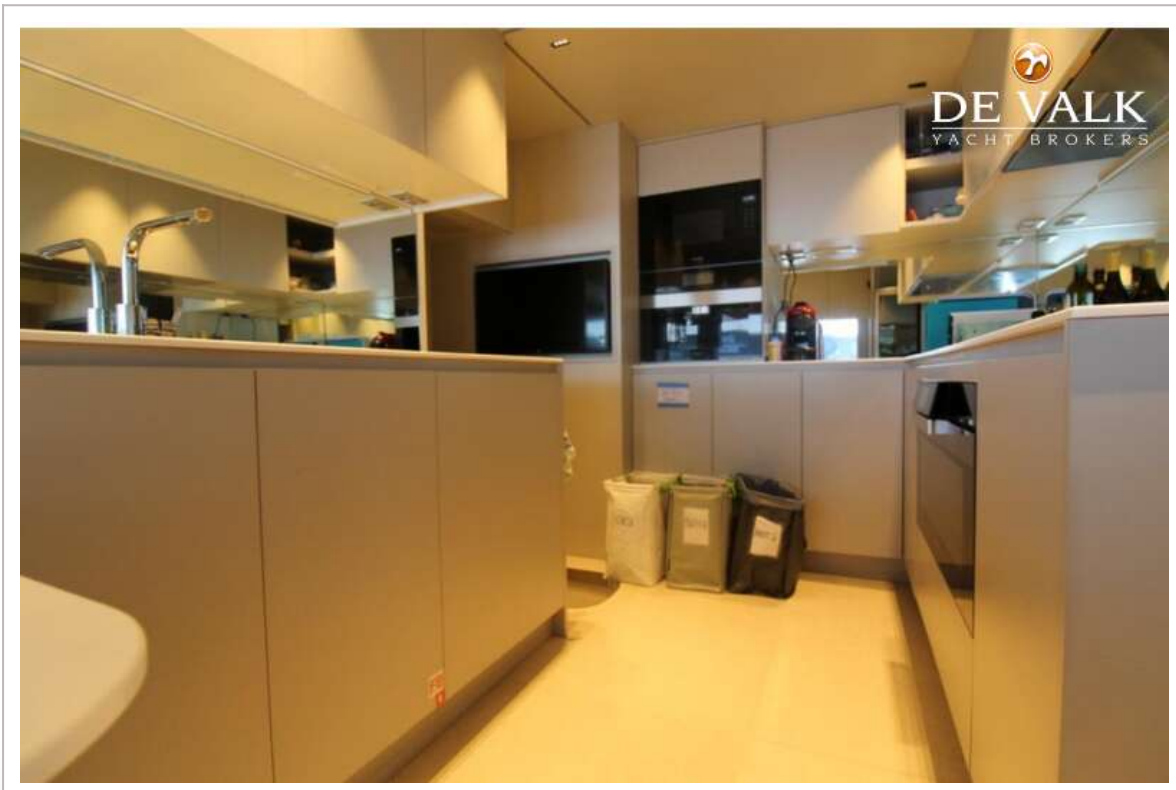
AMER F100



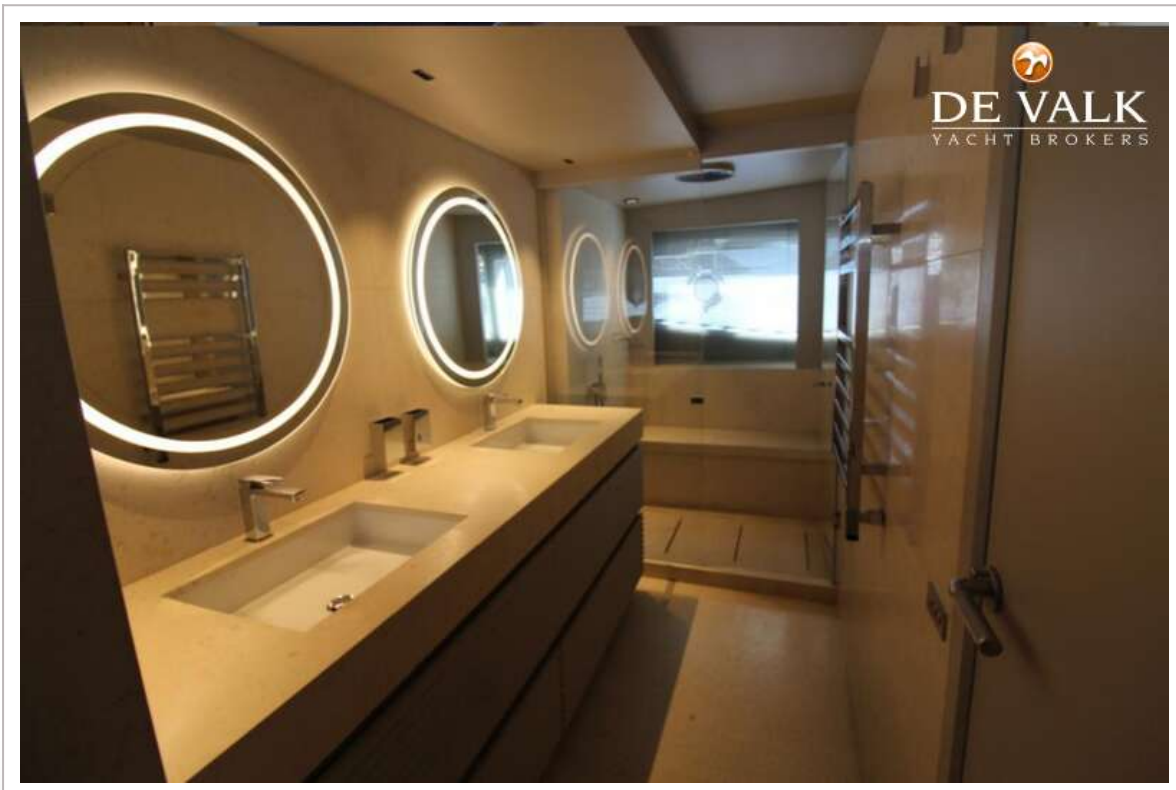
AMER F100



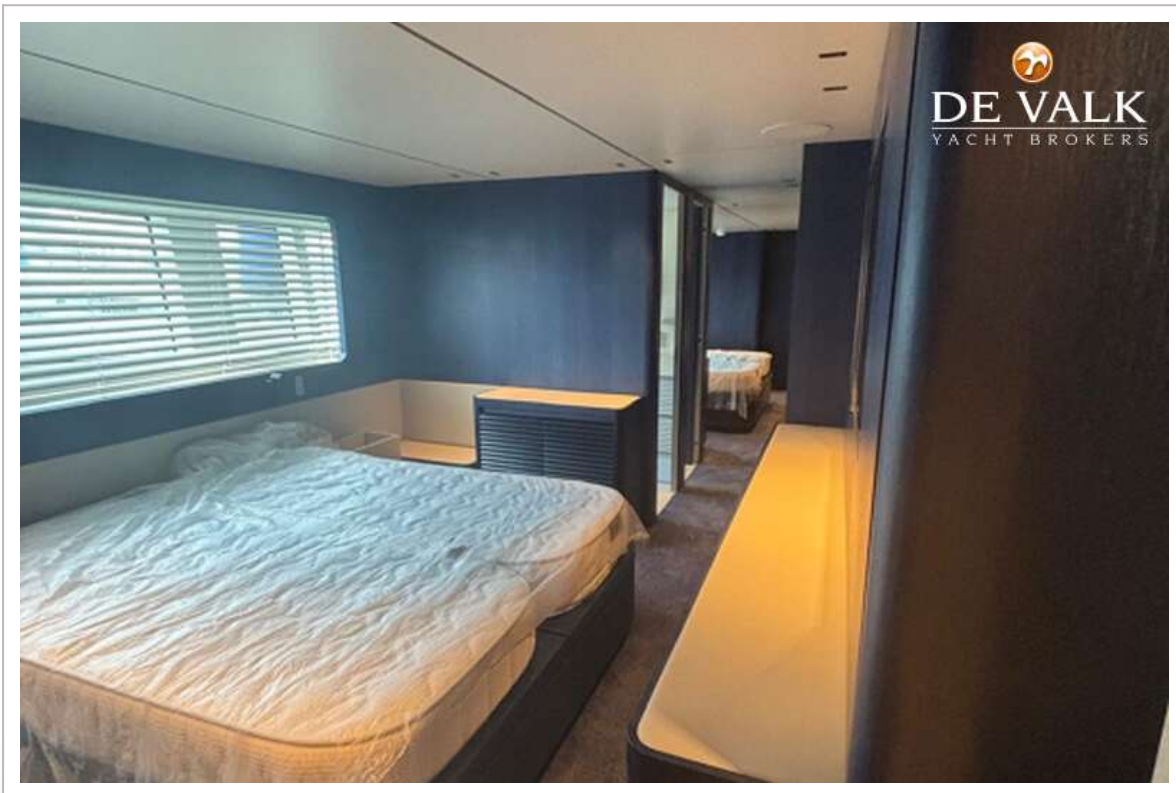
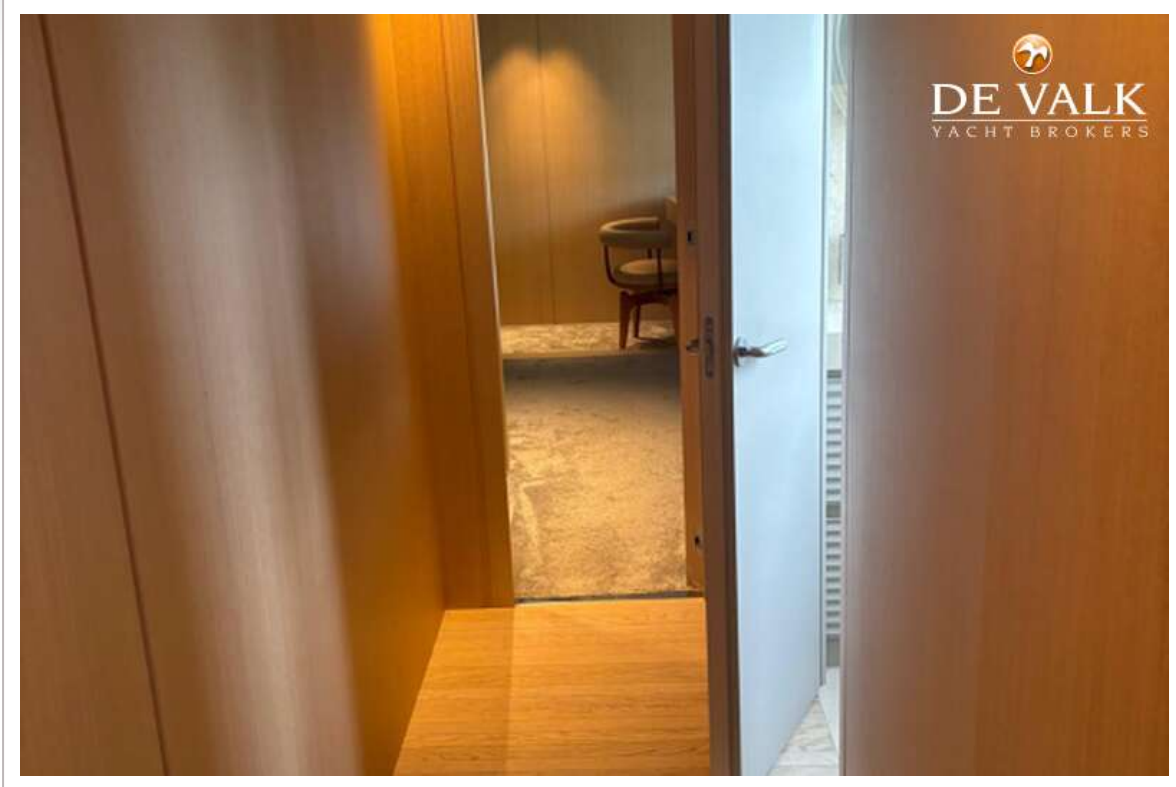
AMER F100



AMER F100



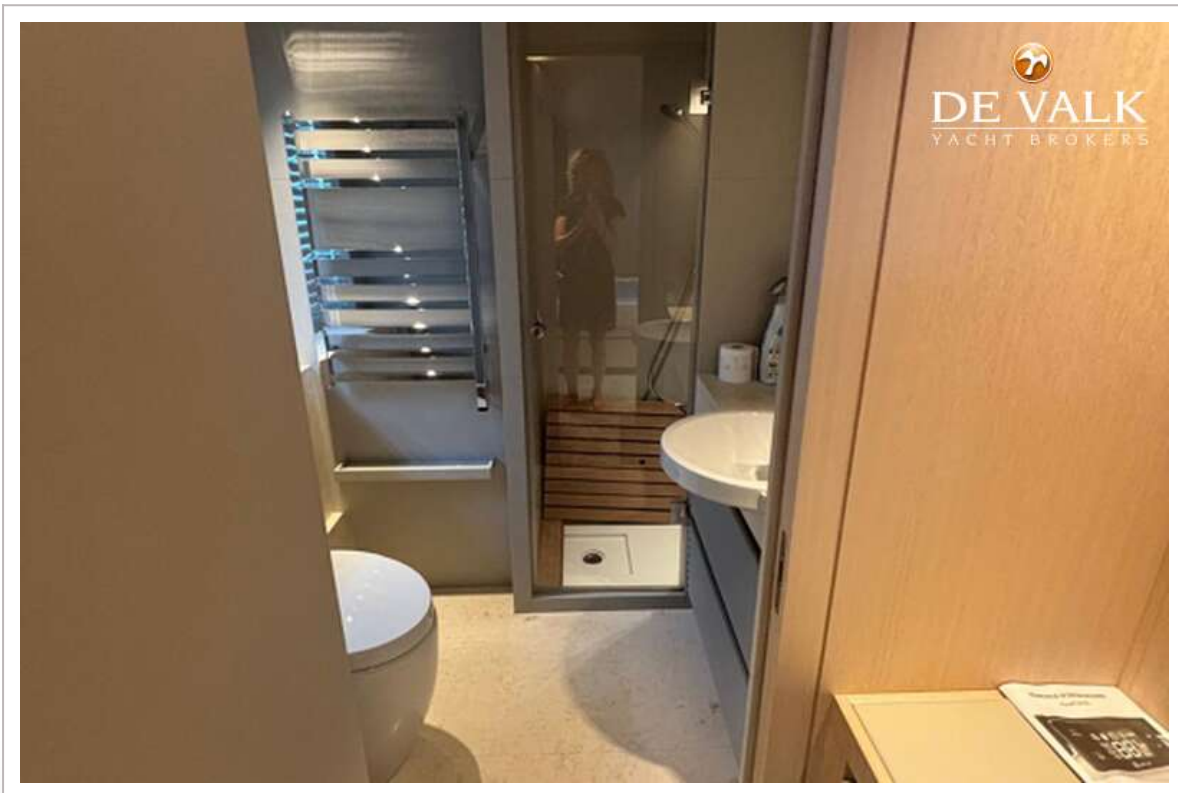
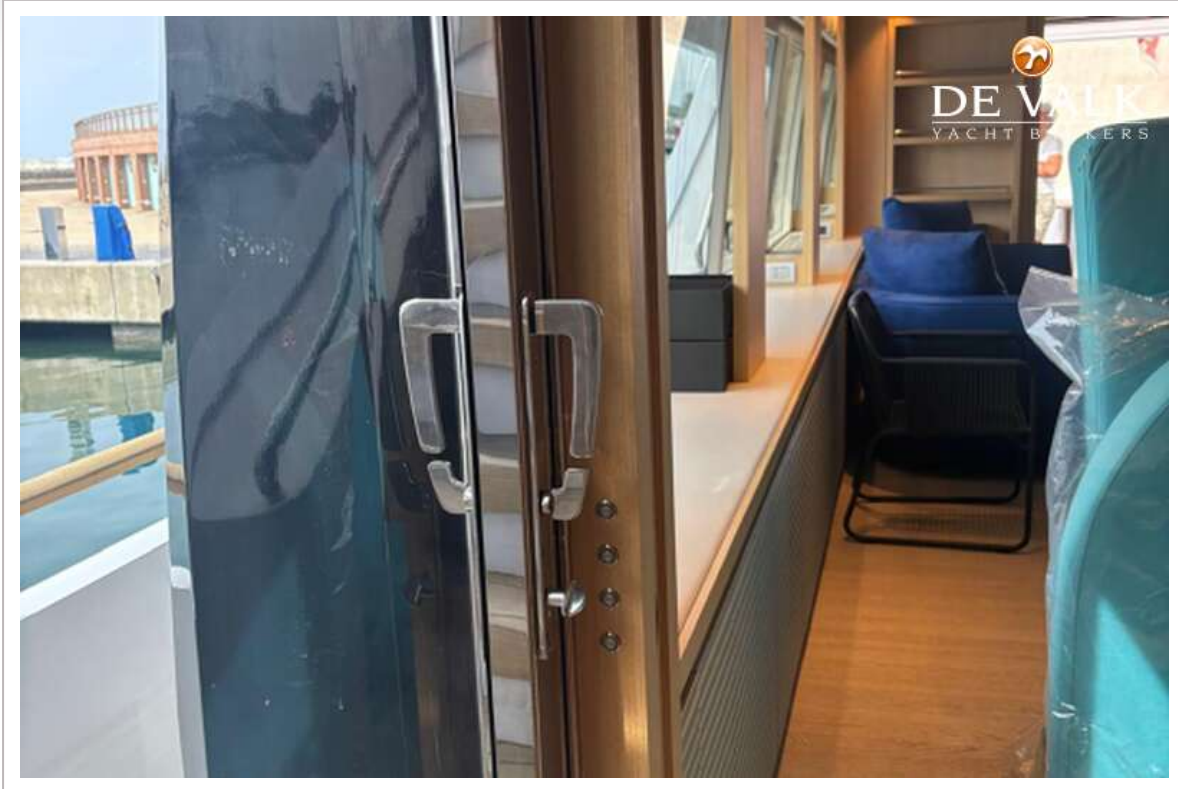
AMER F100



AMER F100



AMER F100



AMER F100



AMER F100

