



DE VALK
YACHT BROKERS



STOREBRO ROYAL CRUISER 31 BALTIC



DE VALK
YACHT BROKERS

STOREBRO ROYAL CRUISER 31 BALTIC

BROKER'S COMMENTS

The Storebro Royal Cruiser 31 Baltic is a timeless Scandinavian classic, renowned for her exceptional craftsmanship, elegant lines, and comfortable cruising capabilities. The current owner has invested significantly in maintaining and upgrading the yacht, ensuring she is presented in excellent condition. Powered by two reliable Volvo Penta diesel engines, she offers dependable performance and confident handling. A well-maintained example, ready for enjoyable cruising.

Jochem Heijermans

SPECIFICATIONS

Dimensions	9.30 x 3.20 x 0.95 (m)	Builder	Storebro Bruks AB
Built	1980	Cabins	2
Material	GRP	Berths	4
Engine(s)	2 x Volvo Penta TMD40 diesel	Hp/Kw	2 x 125.00 (hp), 92.00 (kw)
Asking price	€ 74.500 (VAT Exempt)	Lying	elsewhere / Not at sales office

CONTACT

Sales office	De Valk Sint Annaland B.V.	Telephone	+31 166 601 000
Address	Koelhuisweg 4 4697 RM Sint Annaland NL	E-mail	sintannaland@devalk.nl

DISCLAIMER

These particulars are given in good faith as supplied but cannot be guaranteed.



STOREBRO ROYAL CRUISER 31 BALTIC

GENERAL

Model	STOREBRO ROYAL CRUISER 31 BALTIC
Type	motor yacht
LOA (m)	9,30
LWL (m)	8,05
Beam (m)	3,20
Draft (m)	0,95
Air draft (m)	2,80
Headroom (m)	1,83
Year built	1980
Launched	1986
Builder	Storebro Bruks AB
Country	Sweden
Designer	J.H. Lindblom/Royal Swedish Navy
Hull material	GRP
Hull colour	white
Hull shape	deep-V
Superstructure material	mahogany Complete new pilothouse 2022-2024
Rubbing strake	rubber
Deck material	GRP
Deck finish	non-skid moulded in (painted 2024)
Superstructure deck finish	paint
Cockpit deck finish	Woodprint
Antifouling (year)	2026
Window frame	aluminium
Window material	tempered glass
Insulation	Engine room sound insulation new 2025
Fuel tank (litre)	stainless steel 2 x 325
Freshwater tank (litre)	polyethylene 2 x 140
Wheel steering	mechanical (new steering wheel 2025)
More info on hull	Underwaterhull new primer 2021



STOREBRO ROYAL CRUISER 31 BALTIC

Extra info

Extra cleats placed 2024

ACCOMMODATION

Cabins	2
Berths	4
Floor	woodprint (new floors throughout 2023)
Saloon	yes
Headroom saloon (m)	1,83
Sliding roof	2 x
Heating	diesel ducted hot air Planar (2023)
Aft Cabin	yes
Dinette	yes
Galley	yes
Countertop	plastic
Sink	stainless steel
Cooker	calor gas 2 burner (new, need to be installed)
Fridge	yes
Hot water system	220V + engine
Water pressure system	electrical
Owners cabin	v-bed
Bed length (m)	1,95
Bathroom	shared
Toilet	shared
Toilet system	manual
Wash basin	in the bathroom
Shower	shared
Guest cabin 1	twin single
Bed length (m)	2,00

MACHINERY

No of engines	2
---------------	---



STOREBRO ROYAL CRUISER 31 BALTIC

Make	Volvo Penta
Type	TMD40
HP	125
kW	92
Fuel	diesel
Year installed	1980
Engine cooling system	freshwater heat exchanger
Drive	shaft
Engine controls	bowden cable (2026)
Propeller type	fixed
Propeller blades	5
Propeller shaft material	yes
Manual bilge pump	yes
Electric bilge pump	(2024)
Electrical installation	12V/220V
Start battery	yes
Service battery	yes
Battery charger/inverter	Victron MultiPlus Compact 12/2000/80 (2023/2024)
Shorepower	with cable
Extra info	Through-hull fittings and seacocks replaced 2021
Extra info	Alternators new 2025

NAVIGATION

Compass	yes
Depth sounder/log	Raytheon ST46 Bidata
VHF	Raymarine (2023)
Radar	Raytheon
AIS transponder	Raymarine AIS 700
Navigation lights	yes

EQUIPMENT



STOREBRO ROYAL CRUISER 31 BALTIC

Cockpit cover	(2025)
Cockpit cushions	yes
Cockpit chairs	Foldable
Bathing platform	yes
Boarding ladder	stainless steel
Deck shower	Hot + cold (2025)
Anchor	CQR Plough
Anchor chain	(2025)
Windlass	electrical Lofrans with remote control (2025)
Sea railing	stainless steel
Grab rail (superstructure)	wood (2026)
Wiper	2 x (2026)
Radar reflector	yes
Fenders	yes
Mooring lines	yes
Radio	yes
Cockpit speakers	yes
Speakers in salon	yes



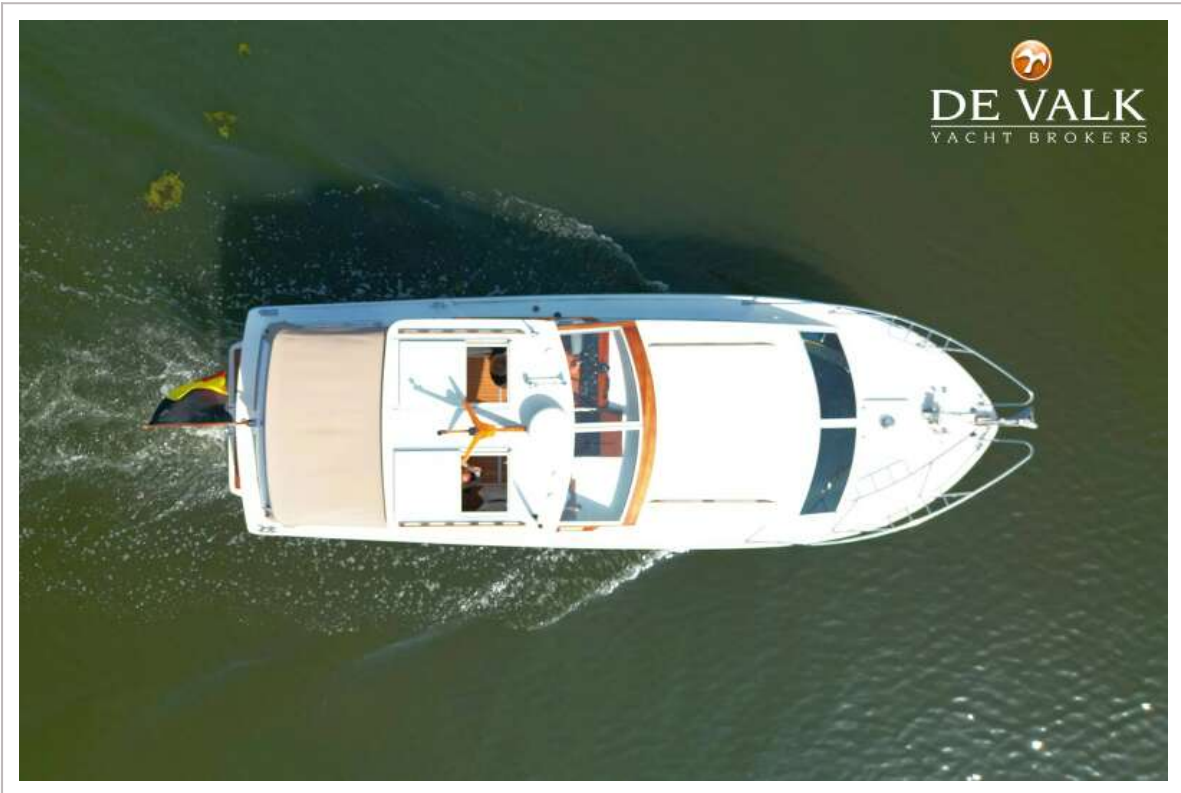
STOREBRO ROYAL CRUISER 31 BALTIC



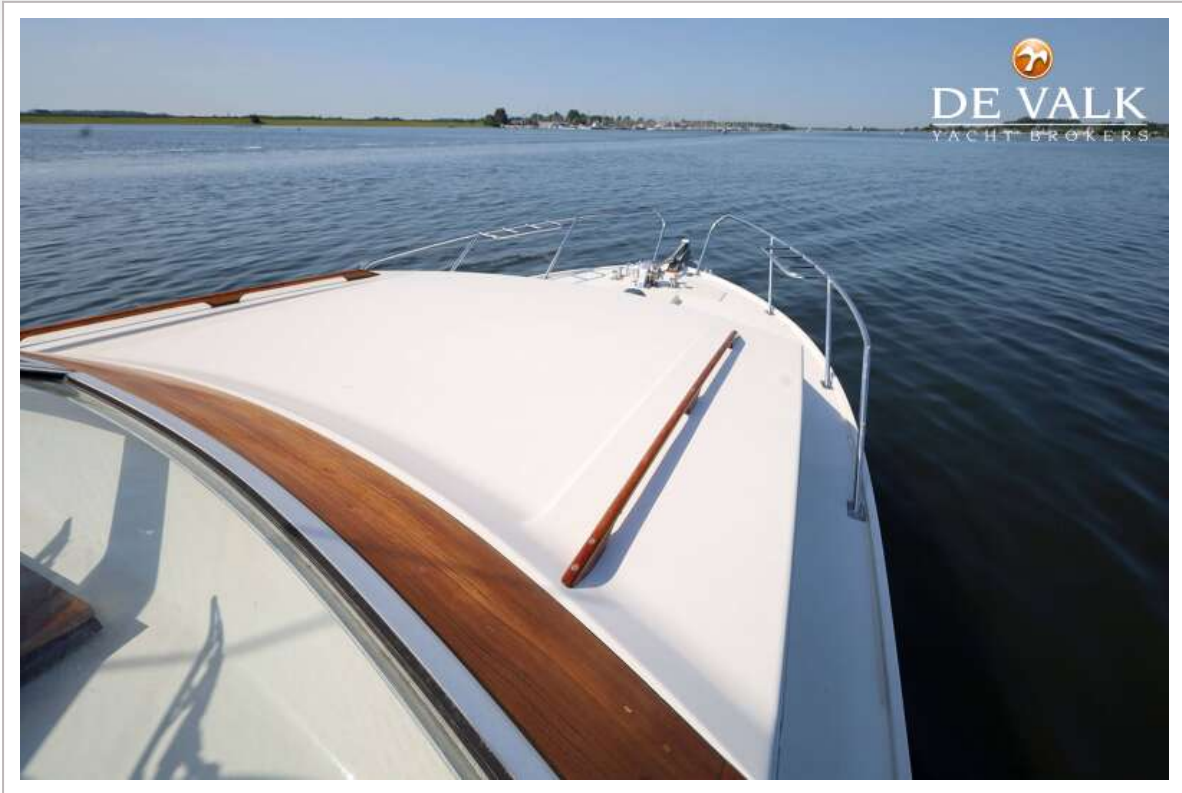
STOREBRO ROYAL CRUISER 31 BALTIC



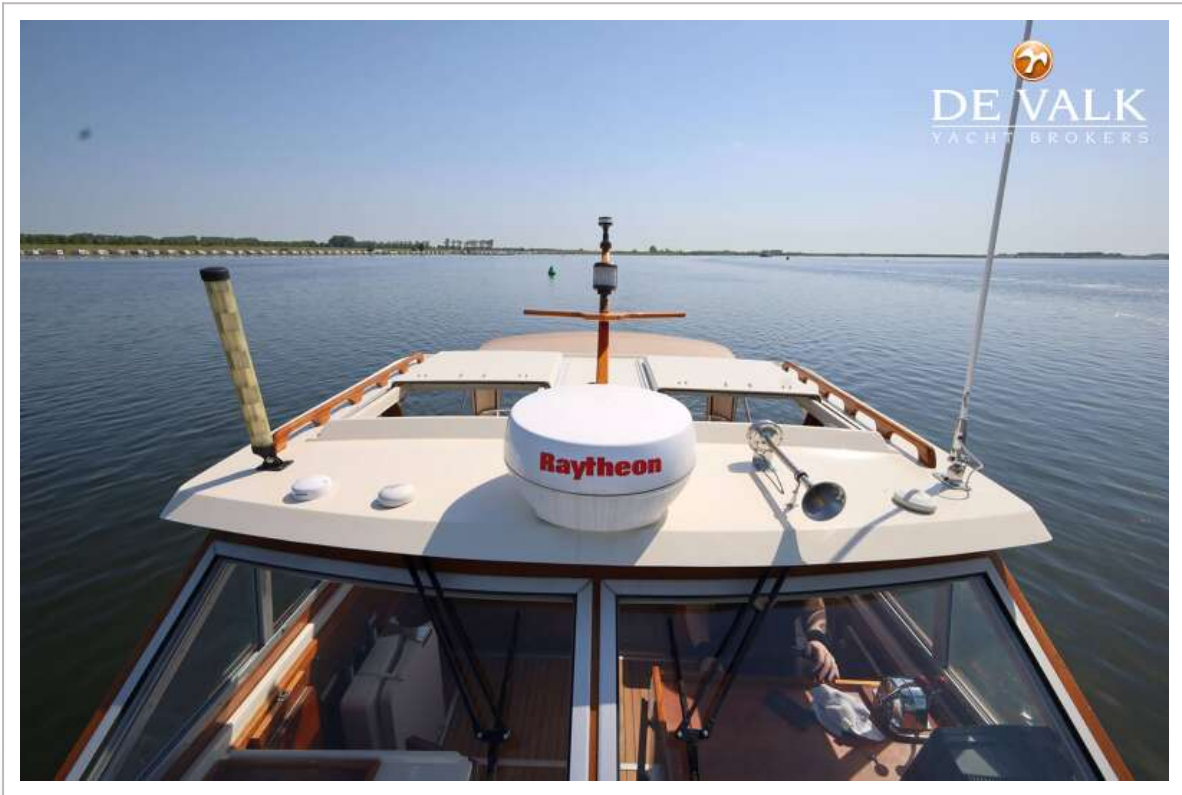
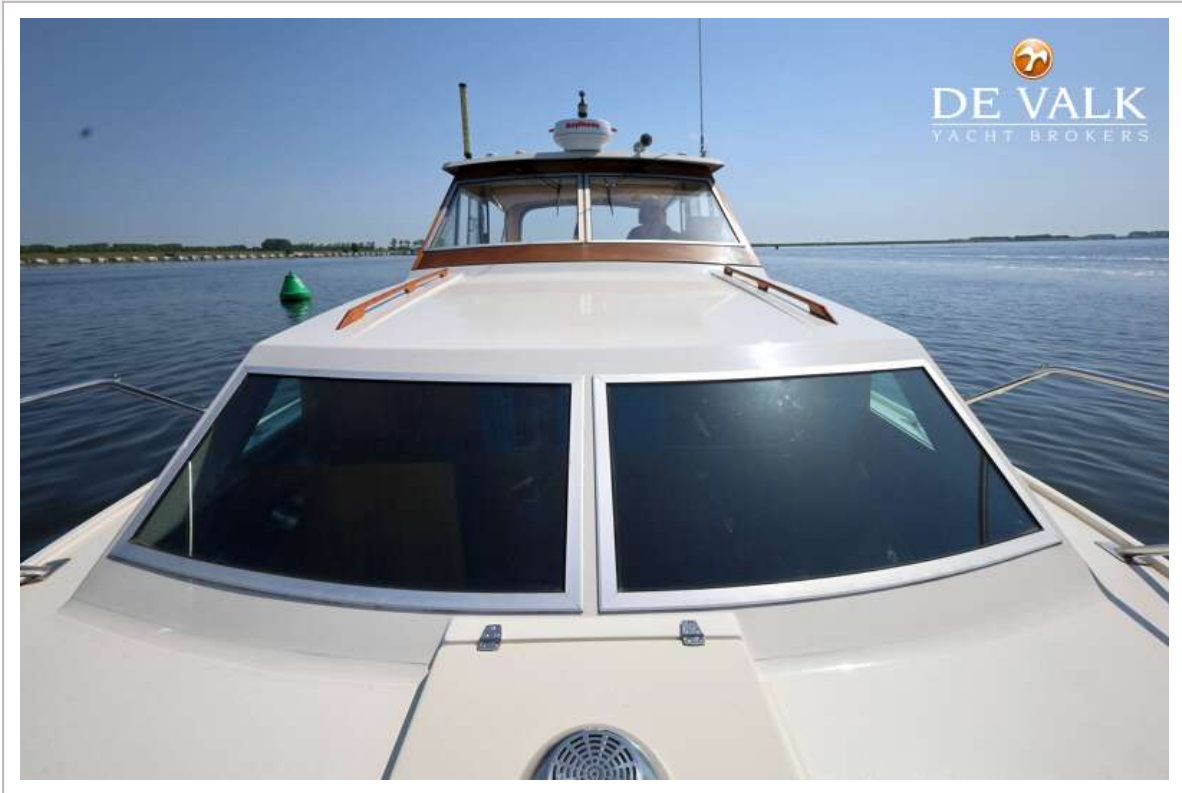
STOREBRO ROYAL CRUISER 31 BALTIC



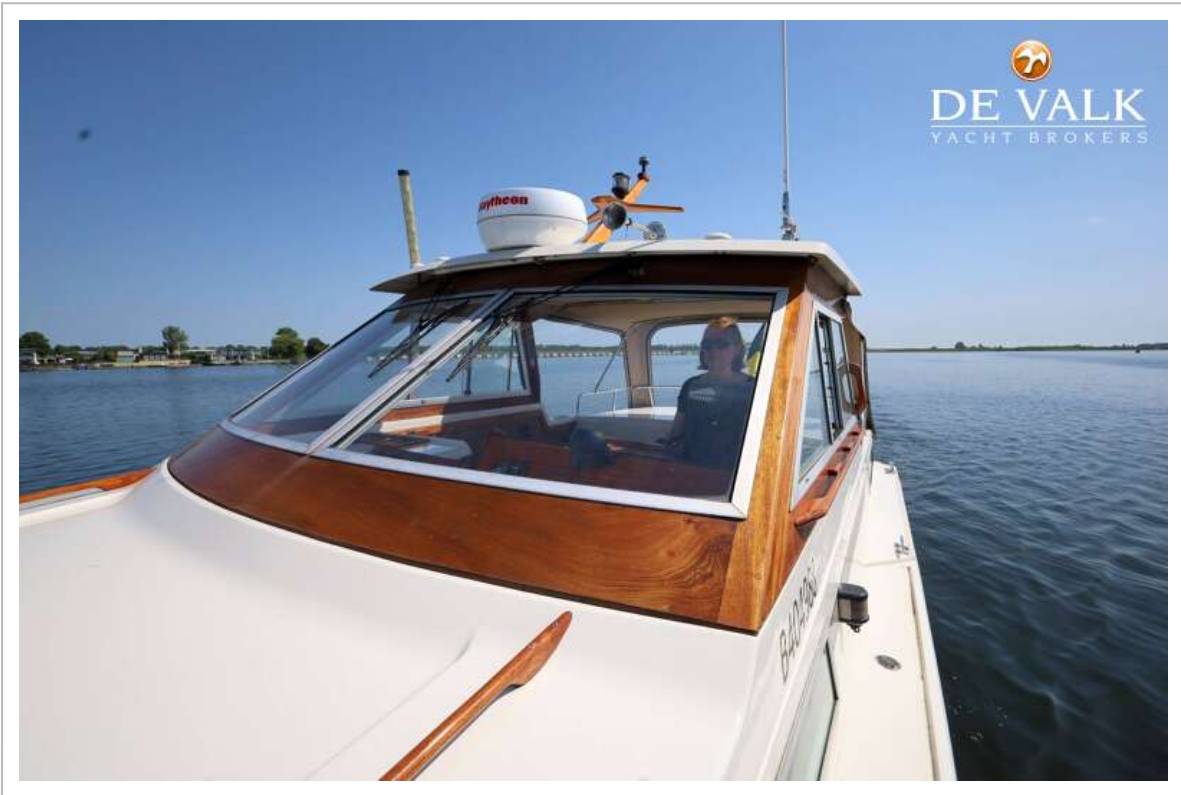
STOREBRO ROYAL CRUISER 31 BALTIC



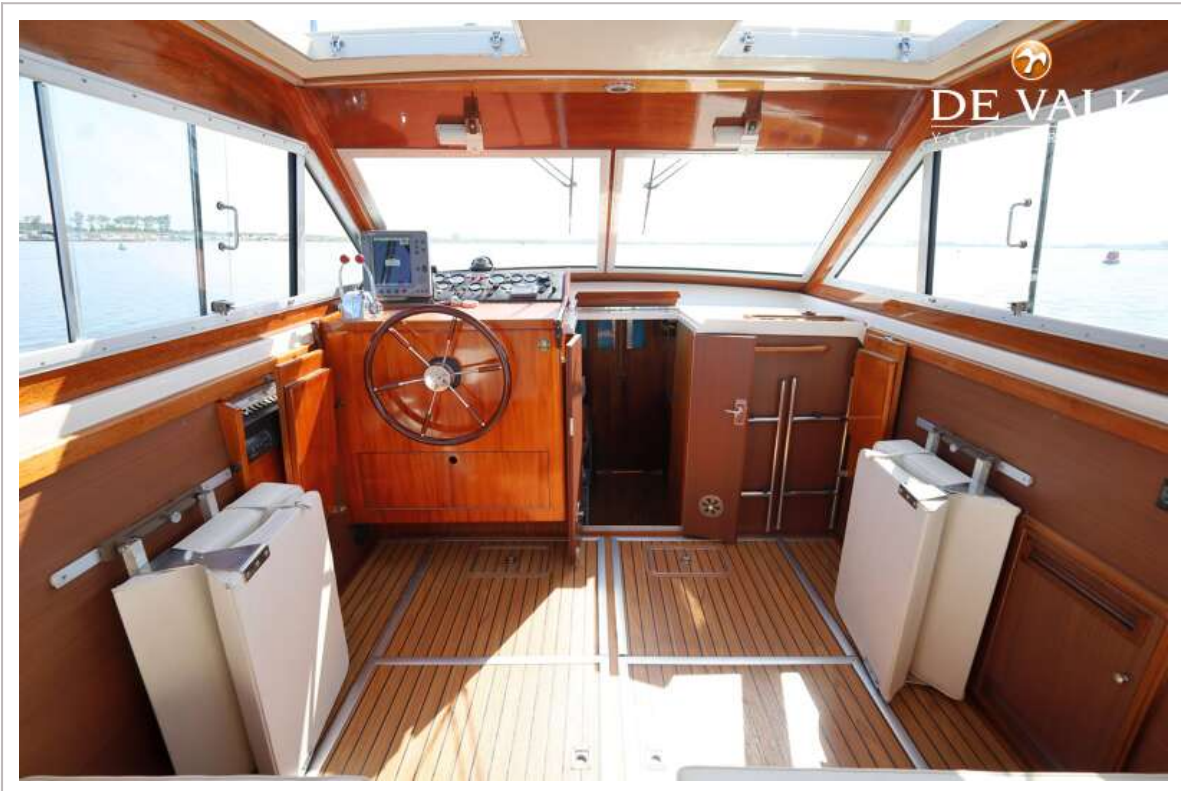
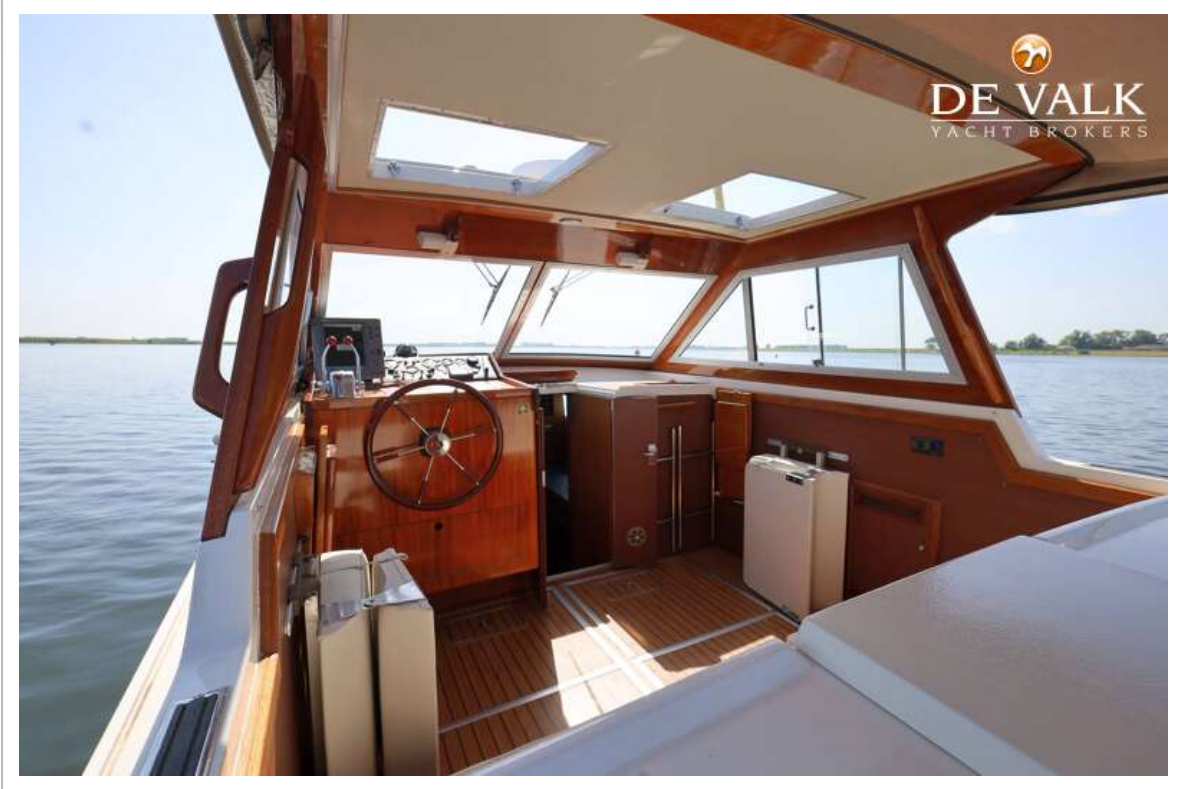
STOREBRO ROYAL CRUISER 31 BALTIC



STOREBRO ROYAL CRUISER 31 BALTIC



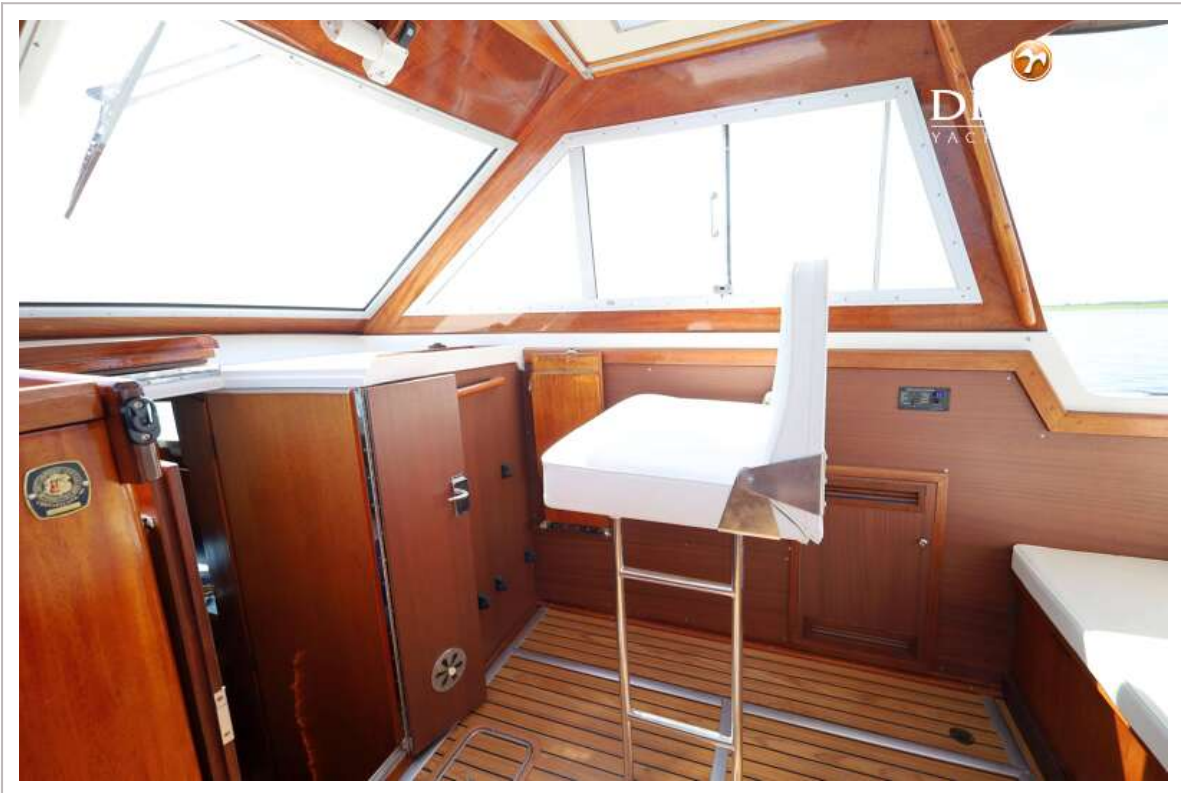
STOREBRO ROYAL CRUISER 31 BALTIC



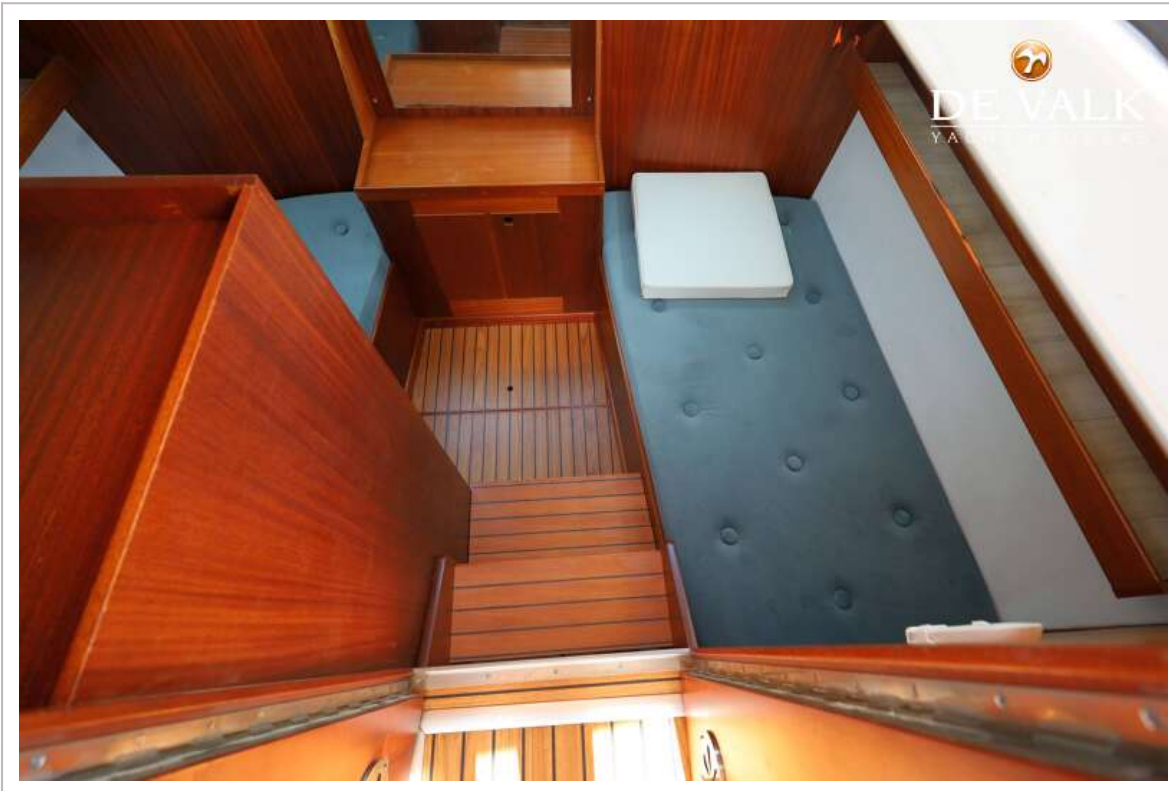
STOREBRO ROYAL CRUISER 31 BALTIC



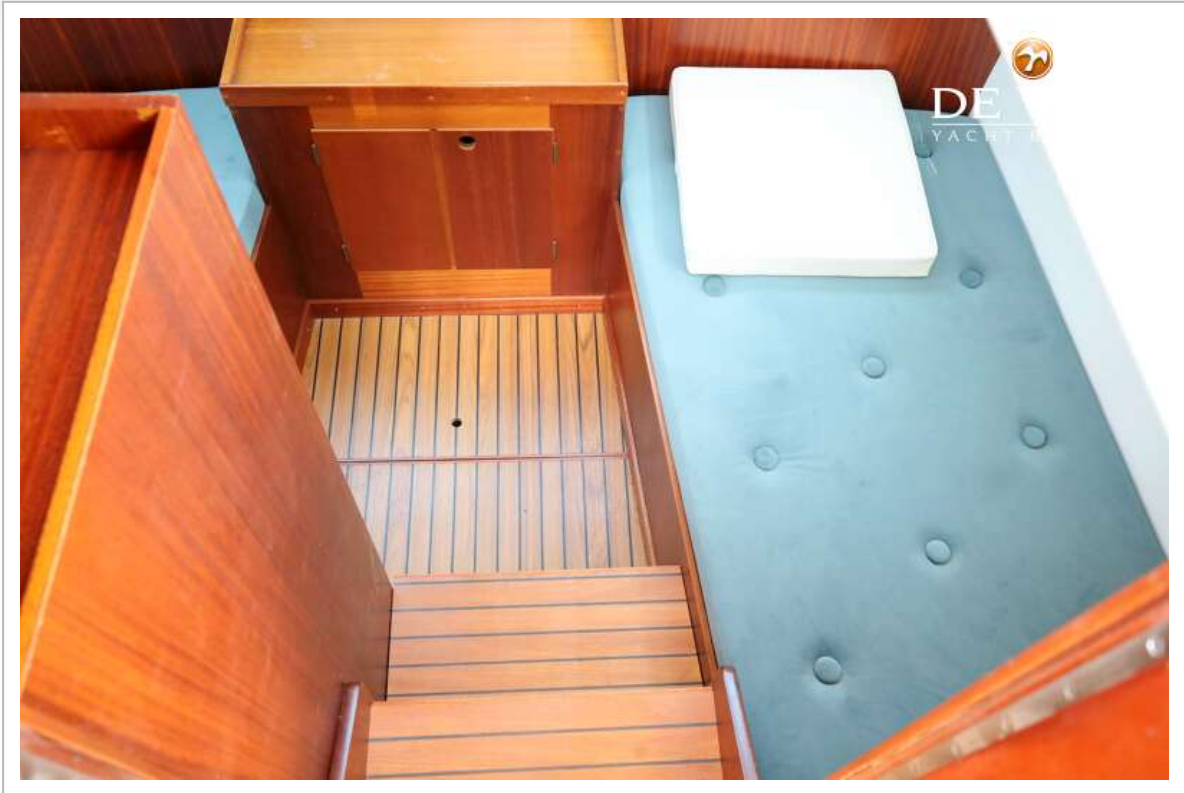
STOREBRO ROYAL CRUISER 31 BALTIC



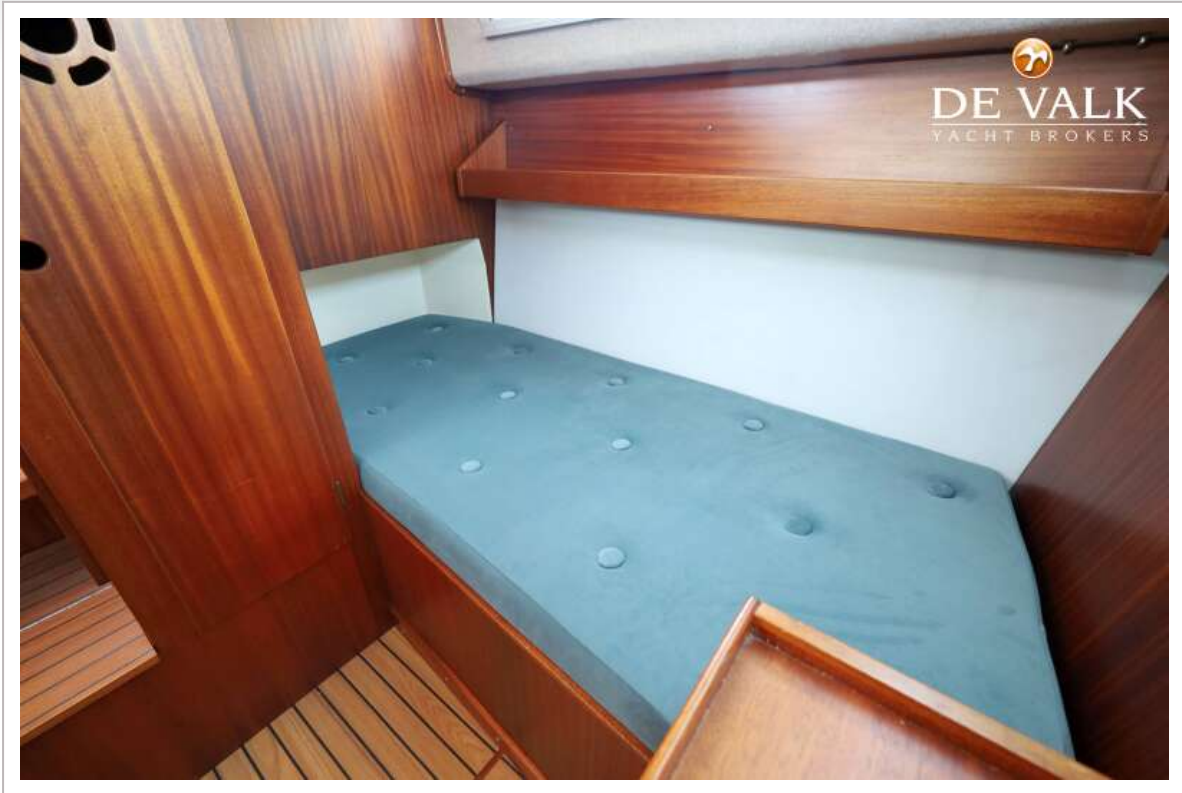
STOREBRO ROYAL CRUISER 31 BALTIC



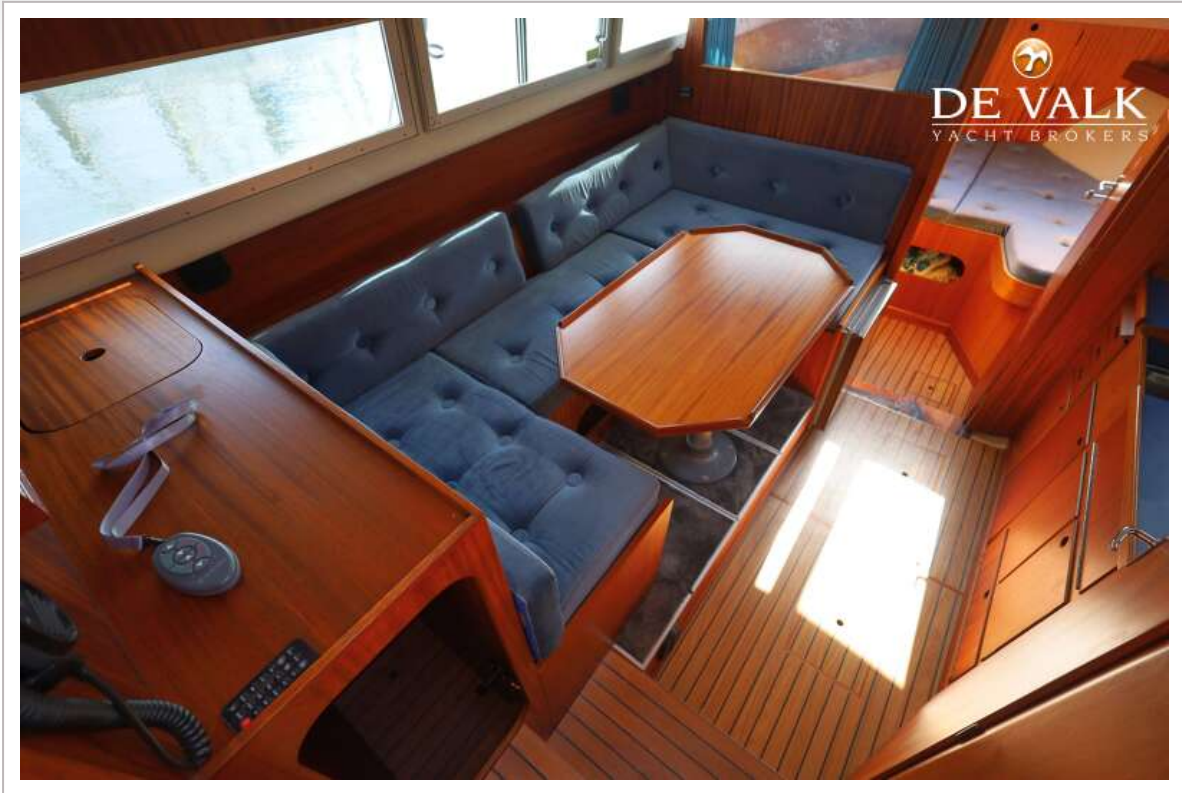
STOREBRO ROYAL CRUISER 31 BALTIC



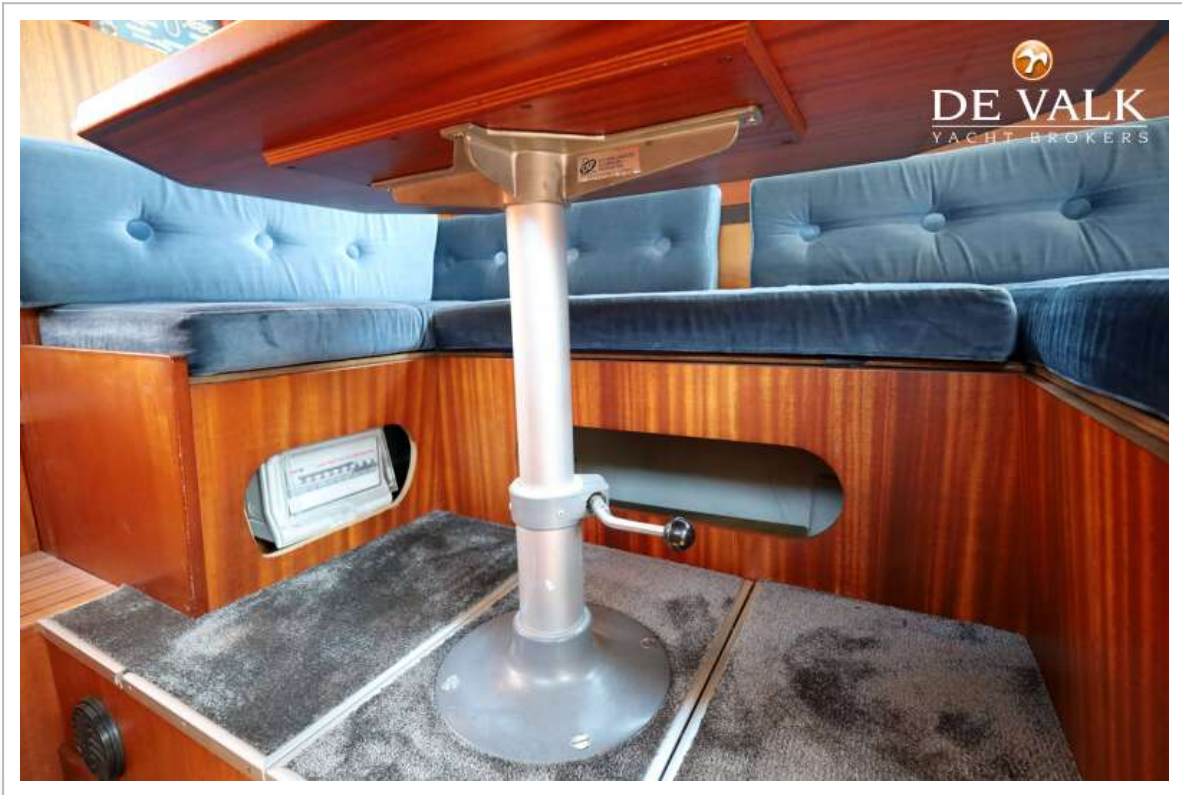
STOREBRO ROYAL CRUISER 31 BALTIC



STOREBRO ROYAL CRUISER 31 BALTIC



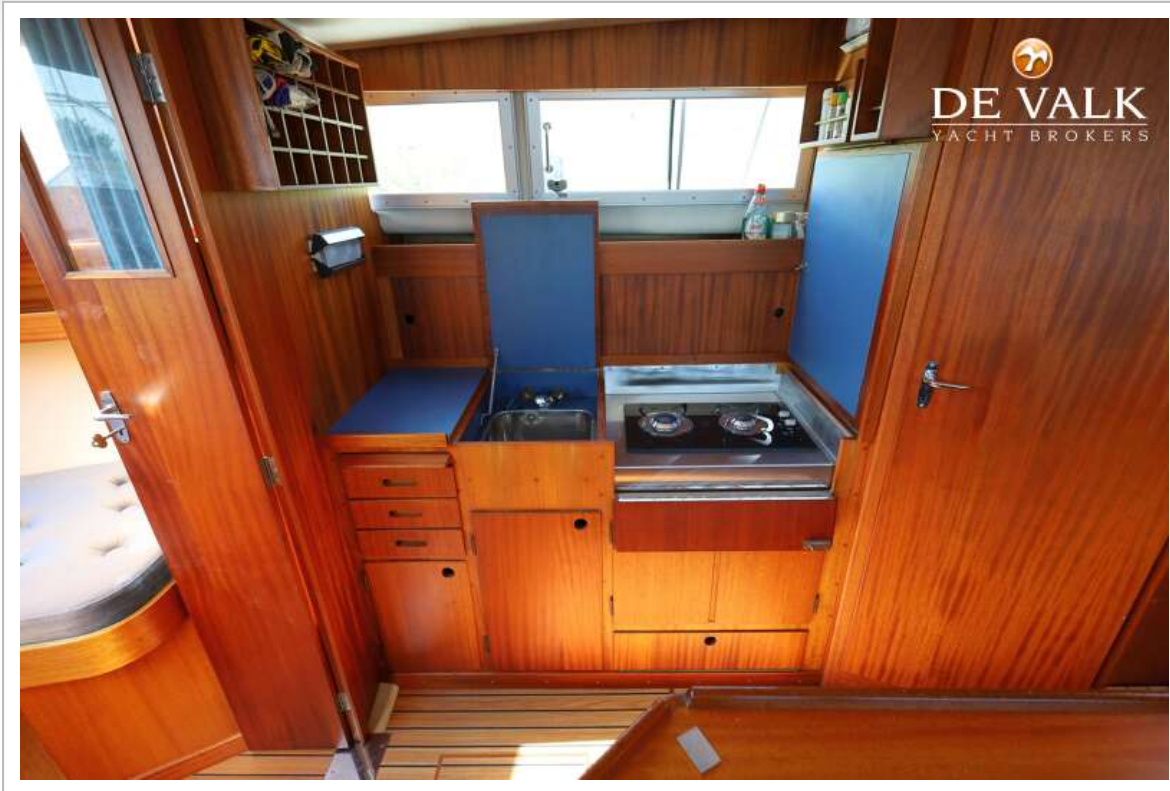
STOREBRO ROYAL CRUISER 31 BALTIC



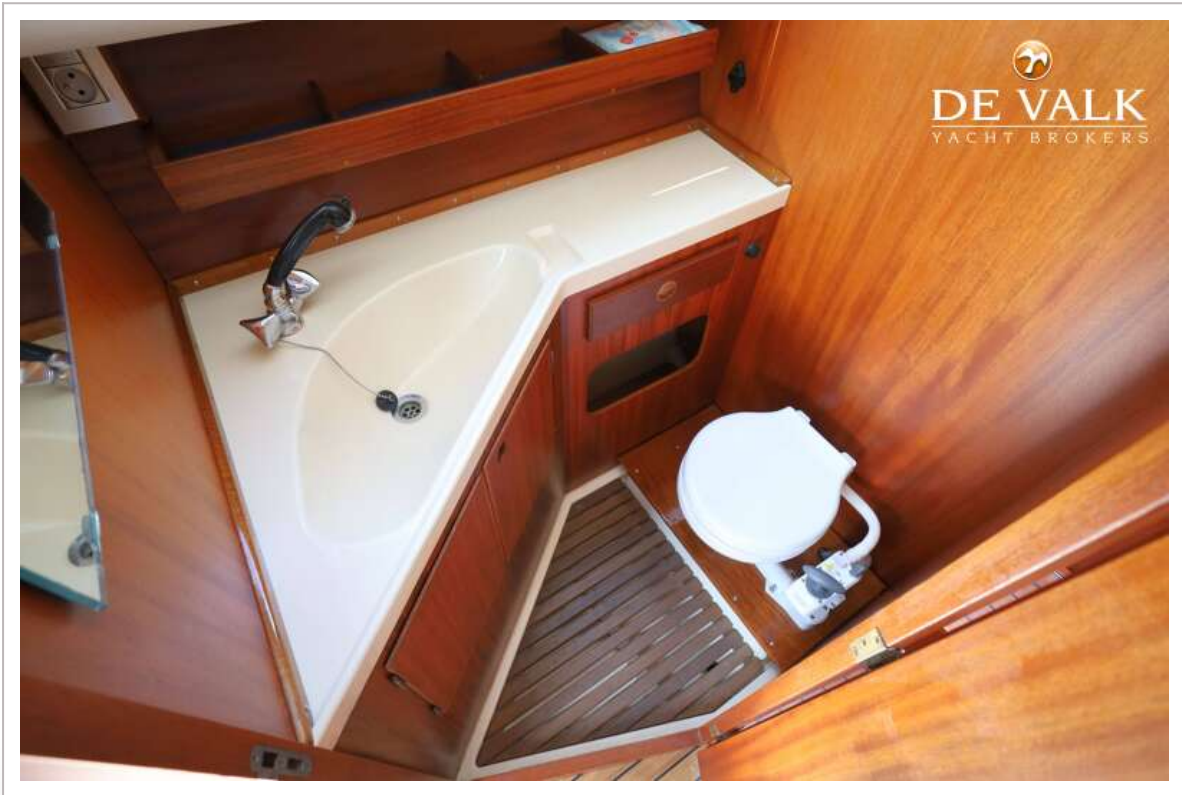
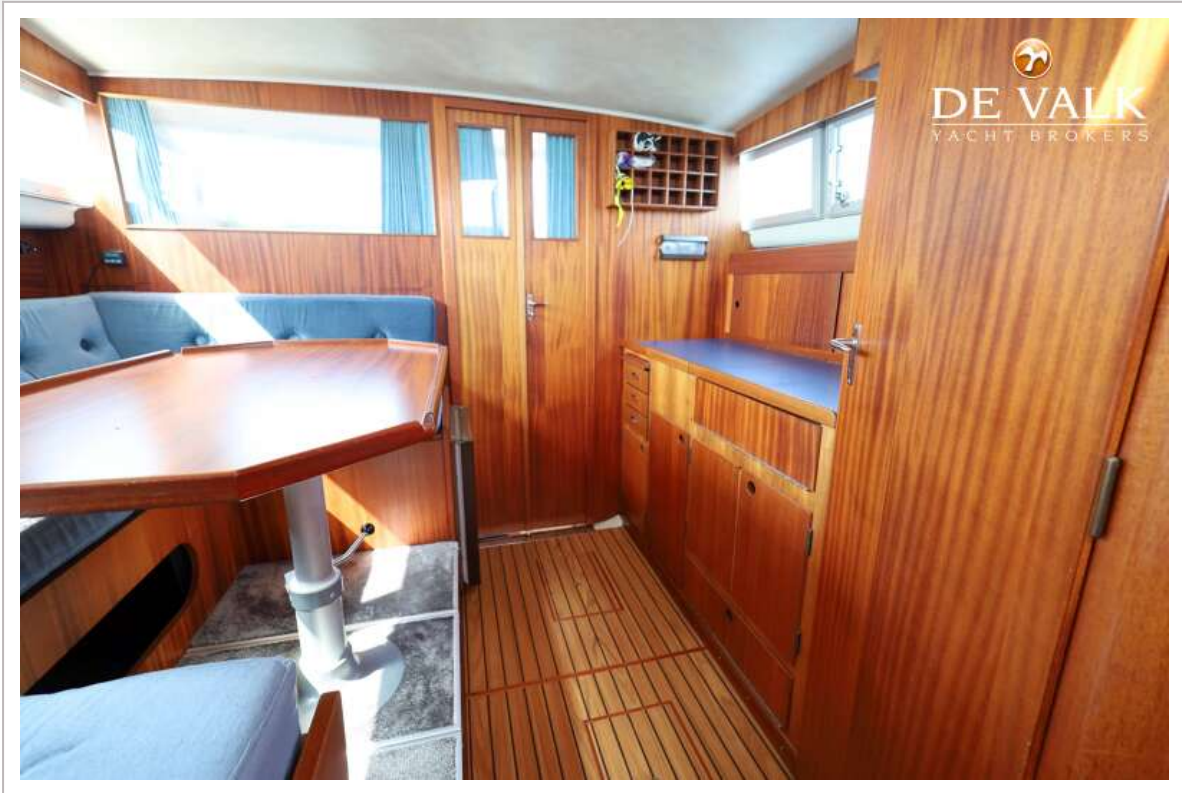
STOREBRO ROYAL CRUISER 31 BALTIC



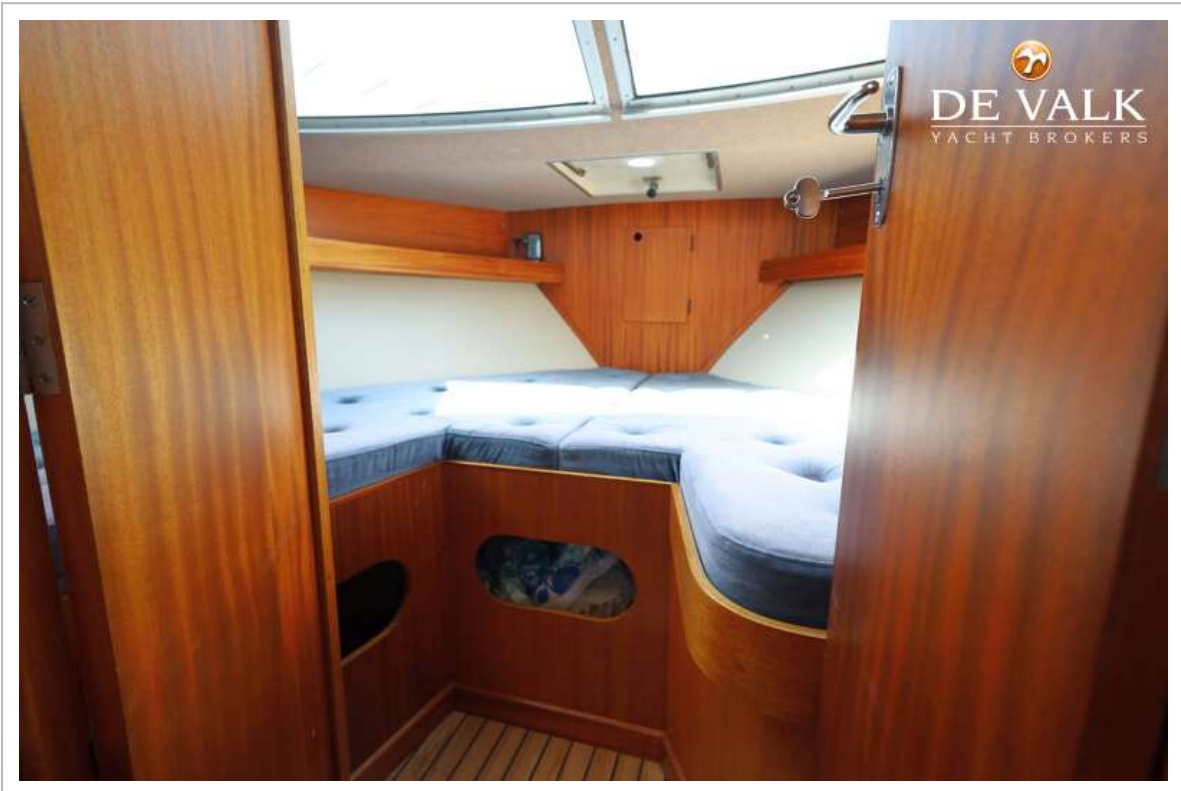
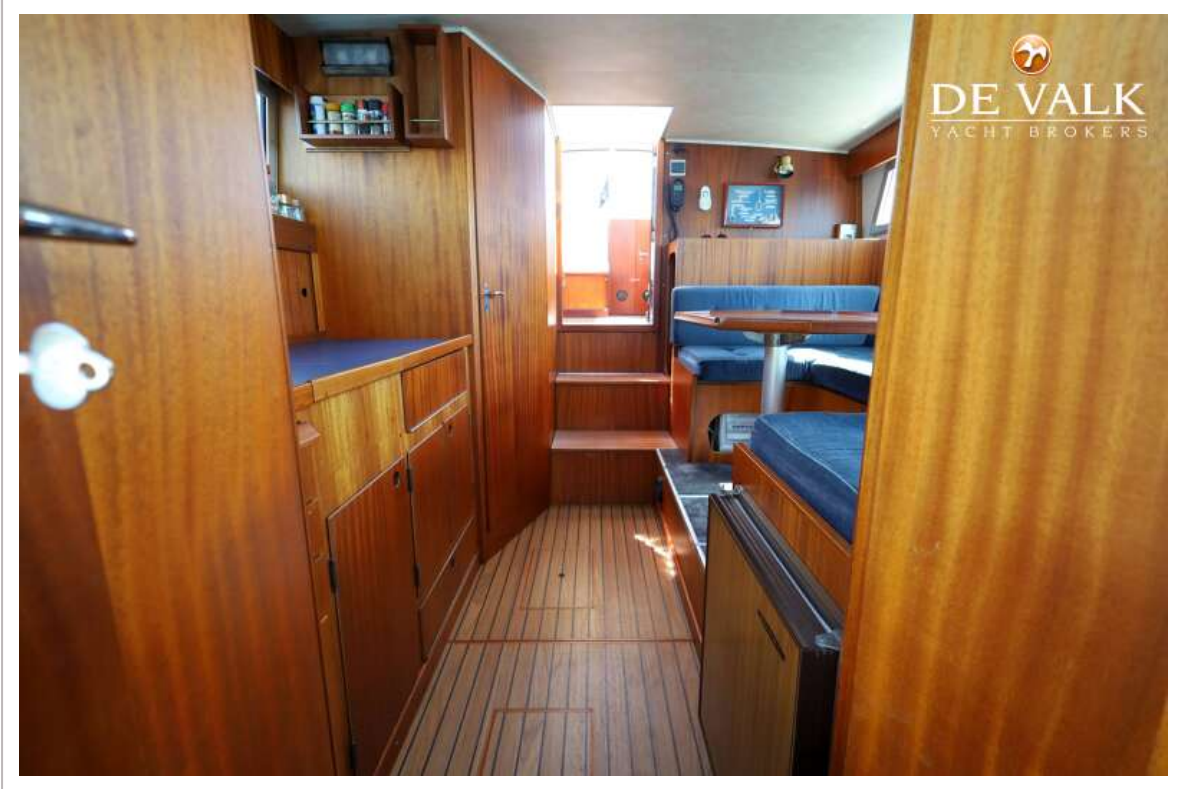
STOREBRO ROYAL CRUISER 31 BALTIC



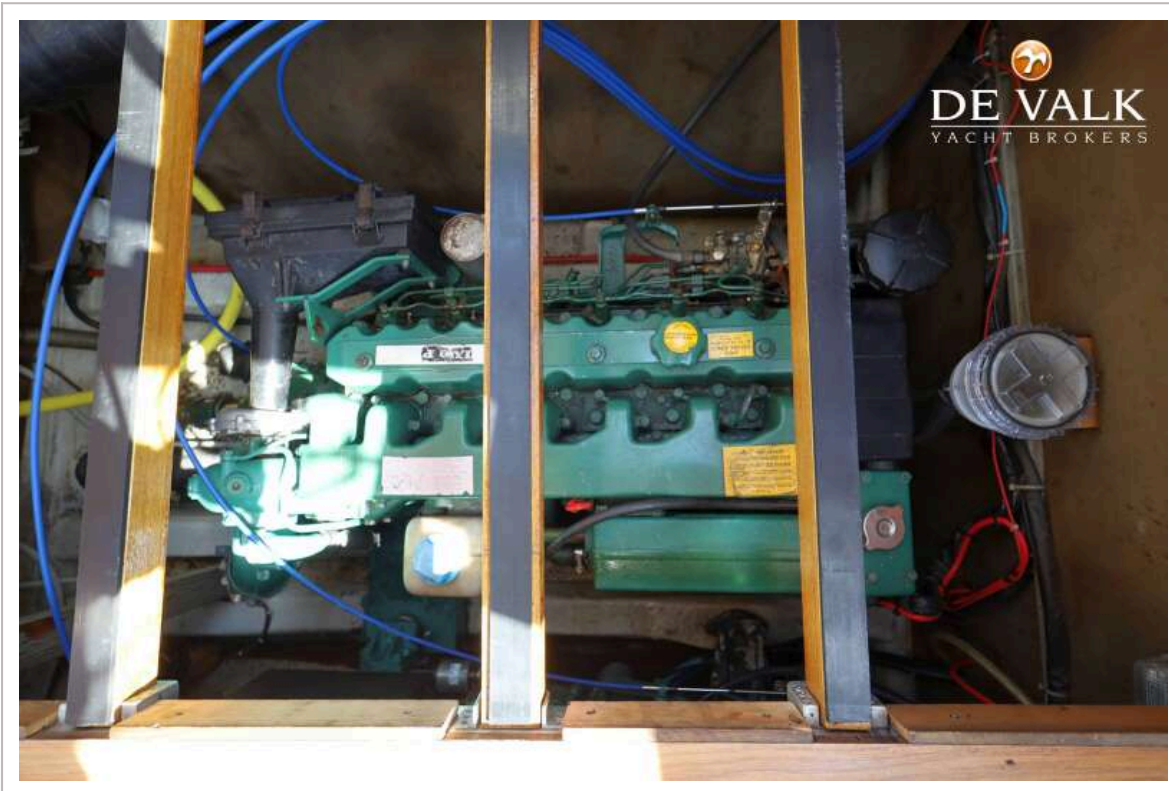
STOREBRO ROYAL CRUISER 31 BALTIC



STOREBRO ROYAL CRUISER 31 BALTIC



STOREBRO ROYAL CRUISER 31 BALTIC



STOREBRO ROYAL CRUISER 31 BALTIC

