



SUPER VAN CRAFT 11.55

SUPER VAN CRAFT 11.55

BROKER'S COMMENTS

Super Craft 11.55 "Quinten II" is a beautiful round bilged classic in a neat condition. Recent maintenance including replacement of the anchor locker and outlets (stainless steel), bow repair, Eberspacher heating and new Jabsco toilet. Those looking for a beautiful, classic motor yacht with the requirements of these years, must have seen this Super Craft 11.55.

Arne Doodeman

SPECIFICATIONS

Dimensions	12.10 x 3.60 x 1.20 (m)	Builder	Klaassen Voorschoten
Built	1979	Cabins	2
Material	Steel	Berths	5
Engine(s)	2 x Volvo MD 40A diesel	Hp/Kw	2 x 79.00 (hp), 58.07 (kw)
Asking price	sold (VAT)	Lying	at sales office

CONTACT

Sales office	De Valk Sneek	Telephone	+31 (0)515 42 80 30
Address	Zwolsmanweg 7 8606 KC Sneek NL	E-mail	sneek@devalk.nl

DISCLAIMER

These particulars are given in good faith as supplied but cannot be guaranteed.



SUPER VAN CRAFT 11.55

GENERAL

Model	SUPER VAN CRAFT 11.55
Type	motor yacht
LOA (m)	12,10
Beam (m)	3,60
Draft (m)	1,20
Year built	1979
Builder	Klaassen Voorschoten
Country	The Netherlands
Displacement (t)	10
Hull material	steel
Hull colour	white
Hull shape	round-bilged
Superstructure material	mahogany
Rubbing strake	steel
Deck material	stainless steel
Deck finish	teak
Antifouling (year)	2014
Window frame	aluminium
Window material	glass
Portholes	copper chromed 12x
Fuel tank (litre)	steel 1200 l.
Level indicator (fuel tank)	VDO
Freshwater tank (litre)	steel 800 l.
Wheel steering	mechanical
Inside helm position	yes
Outside helm position	yes

ACCOMMODATION

Cabins	2
Berths	5



SUPER VAN CRAFT 11.55

Interior	mahogany
Floor	carpet
Aft deck	yes
Saloon	yes
Sliding roof	yes
Heating	diesel ducted hot air Eberspacher D5 (2012)
Dinette	yes
Opening door to aft deck	yes
Galley	yes
Countertop	yes
Sink	stainless steel
Cooker	calor gas 4-burner
Oven	Tomado
Extractor	yes
Microwave	Severin
Fridge	with freezing compartment Electrolux 103 l.
Hot water system	220V + engine Rheinstrom 50 l.
Water pressure system	electrical
Owners cabin	double bed + single bed
Wardrobe	hanging and shelves
Bathroom	shared
Toilet	shared
Toilet system	manual Jabsco (2016)
Wash basin	in the bathroom
Shower	shared
Guest cabin 1	twin single
Wardrobe	hanging and shelves

MACHINERY

No of engines	2
Make	Volvo



SUPER VAN CRAFT 11.55

Type	MD 40A
HP	79,00
kW	58,07
Fuel	diesel
Year installed	1992
Engine hours	2245
Engine cooling system	freshwater heat exchanger
Engine controls	bowden cable Volvo Penta
Gearbox	hydraulic Velvet
Exhaust	watercooled
Propeller type	fixed
Propeller shaft material	stainless steel
Shaft lubrication	grease
Electric bilge pump	yes
Start battery	2x 75 Ah
Service battery	4x 90 Ah semi traction (2015)
Battery charger	Victron Palas 12/50
Inverter	Victron Phoenix 12/750 (2011)
Shorepower	with cable
Extra info	Two stainless steel exhausts (2014)
Extra info	New stainless steel anchor locker and repair of the bow (2014)

NAVIGATION

Compass	liquid compass Sestrel
Depth sounder/log	B&G
VHF	Sailor RT144
Searchlight	yes

EQUIPMENT

Sprayhood	yes
Bimini	yes



SUPER VAN CRAFT 11.55

Cockpit cushions	yes
Cockpit table	yes
Bathing platform	yes
Boarding ladder	yes
Gangway	wood
Anchor	yes
Anchor chain	yes
Anchor 2	yes
Windlass	manual
Davits	steel
Davits controls	manual
Sea railing	wood & steel
Grab rail (superstructure)	wood
Railing side opening gates	2x
Wiper	6x
Horn	yes
Fenders	yes
Mooring lines	yes
TV	Audiosonic
Radio-cd player	JVC
Clock - barometer	clock, baro- & hygrometer
Fire extinguisher	yes



SUPER VAN CRAFT 11.55



SUPER VAN CRAFT 11.55



SUPER VAN CRAFT 11.55



SUPER VAN CRAFT 11.55



SUPER VAN CRAFT 11.55



SUPER VAN CRAFT 11.55





SUPER VAN CRAFT 11.55



SUPER VAN CRAFT 11.55



SUPER VAN CRAFT 11.55



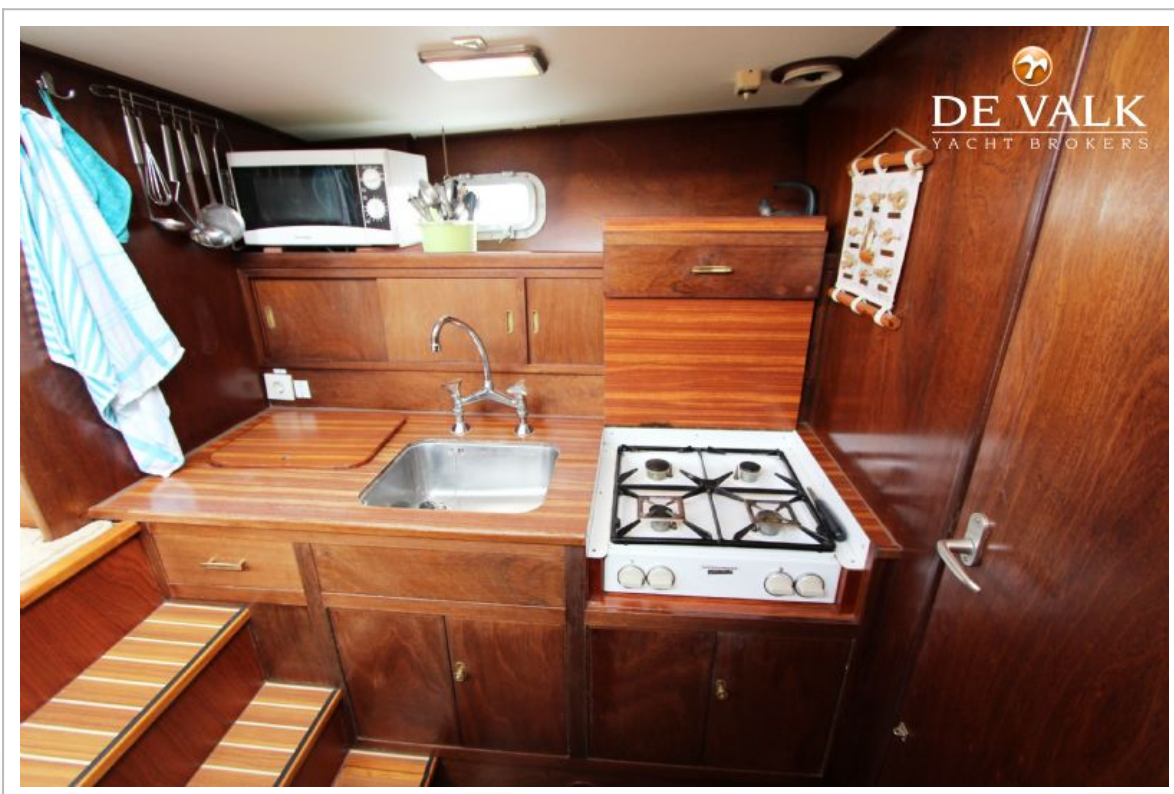
SUPER VAN CRAFT 11.55



SUPER VAN CRAFT 11.55

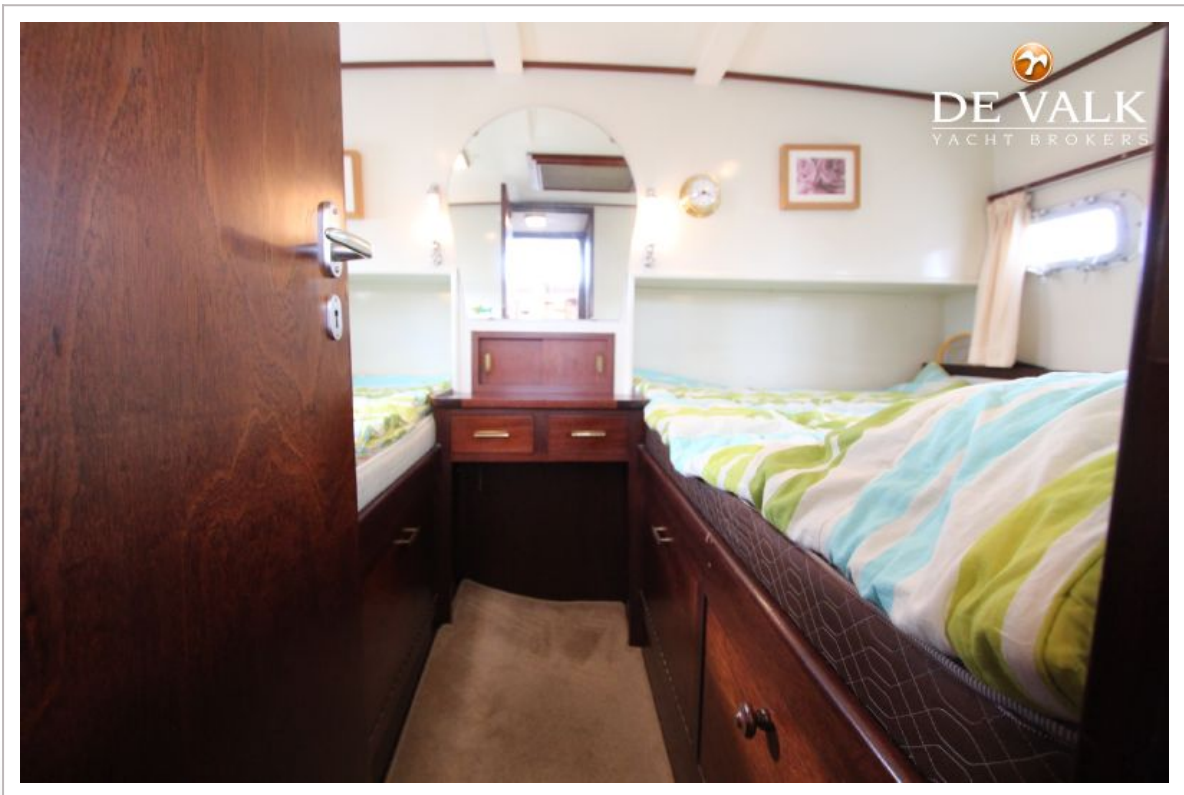


SUPER VAN CRAFT 11.55



SUPER VAN CRAFT 11.55





SUPER VAN CRAFT 11.55

