



DE VALK  
YACHT BROKERS



## BOARNCRUISER 365 NEW LINE



DE VALK  
YACHT BROKERS

# BOARNCRUISER 365 NEW LINE

## BROKER'S COMMENTS

Boarncruiser 365 New Line. Well known and gracious design from the famous Dutch shipyard DE BOARNSTREAM. Bow and sternthruster, Wisper Power generator. Well maintained motoryacht with 1 Yanmar diesel makes it a good combination of comfort and sailingcapacities.

*Pieter Bosma*

## SPECIFICATIONS

<b>Dimensions</b>	11.60 x 3.80 x 1.00 (m)	<b>Builder</b>	Jachtwerf De Boarnstream
<b>Built</b>	1999	<b>Cabins</b>	1
<b>Material</b>	Steel	<b>Berths</b>	4
<b>Engine(s)</b>	1 x Yanmar 4JH3-HTE diesel	<b>Hp/Kw</b>	100.00 (hp), 73.50 (kw)
<b>Asking price</b>	sold (VAT )	<b>Lying</b>	at sales office

## CONTACT

<b>Sales office</b>	De Valk Sneek	<b>Telephone</b>	+31 (0)515 42 80 30
<b>Address</b>	Zwolsmanweg 7 8606 KC Sneek NL	<b>E-mail</b>	sneek@devalk.nl

## DISCLAIMER

These particulars are given in good faith as supplied but cannot be guaranteed.



# BOARNCRUISER 365 NEW LINE

## GENERAL

Model	BOARNCRUISER 365 NEW LINE Type
Type	motor yacht Type
LOA (m)	11,60
Beam (m)	3,80
Draft (m)	1,00
Air draft (m)	3,60
Air draft min (m)	2,75
Headroom (m)	1,95
Year built	1999
Builder	Jachtwerf De Boarnstream
Country	The Netherlands Type
Designer	H. Hokwerda
Displacement (t)	9,5
Gross tonnage	
CE norm	C
Hull material	steel
Hull colour	white
Hull thickness (mm)	5
Hull shape	multi hard chine
Keel type	long keel
Superstructure material	steel
Superstructure (mm)	4
Rubbing strake	rubber
Deck material	steel
Deck finish	teak
Superstructure deck finish	paint
Cockpit deck finish	teak
Dorades	
Window frame	aluminium
Window material	glass



# BOARNCRUISER 365 NEW LINE

Portholes	aluminium
Insulation	rockwool
Radar arch	collapsible Stainless steel radar arch
Fuel tank (litre)	steel 400
Level indicator (fuel tank)	Wema
Freshwater tank (litre)	stainless steel 400
Level indicator (freshwater)	Wema
Blackwater tank (litre)	stainless steel 225
Level indicator (blackwater)	Wema
Blackwater tank extraction	deck extraction + pump
Outside helm position	hydraulic
Emergency tiller	

## ACCOMMODATION

Cabins	1
Berths	4
Interior	cherry
Floor	carpet
Aft deck	
Saloon	
Heating	diesel ducted hot air Webasto
Dinette	
Dinette to convert into berth	
Opening door to aft deck	
Galley	
Countertop	plastic
Sink	stainless steel
Cooker	calor gas Smev 4 burner
Extractor	
Microwave	Sharp
Fridge	Coolmatic 110L with freezer
Hot water system	by engine



# BOARNCRUISER 365 NEW LINE

Water pressure system	electrical
Owners cabin	French bed
Wardrobe	
Bathroom	shared
Toilet	
Toilet system	electric
Wash basin	
Shower	

## MACHINERY

No of engines	1
Make	Yanmar
Type	4JH3-HTE
HP	100,00
kW	73,50
Fuel	diesel
Year installed	1999
Maximum speed (kn)	9
Cruising speed (kn)	7
Engine hours	2384
Engine cooling system	freshwater heat exchanger
Drive	shaft
Engine controls	bowden cable
Gearbox	hydraulic
Bowthruster	electric Vetus
Sternthruster	electric Vetus
Exhaust	watercooled
Thrust bearing	Phyton drive
Propeller type	fixed
Propeller blades	4 bladed
Propeller shaft material	stainless steel



# BOARNCRUISER 365 NEW LINE

Shaft lubrication	water
Electric bilge pump	
Electrical installation	
Generator	Whisper Power M-GV4 piccolo 4,4 Kva
Start battery	1 x Vetus 108ah
Service battery	3 x 180 ah
Generator battery	
Bowthruster battery	
Sternthruster battery	
Battery monitor	Mastervolt and Whisper power battery monitor
Battery charger/inverter	Mastervolt Combi 12/1200
Solar panel	2 x solar panel
Shorepower	with cable

## NAVIGATION

Depth sounder/log	Autohelm tridata
Rudder angle indicator	Vetus

## EQUIPMENT

Sprayhood	
Cockpit cover	
Window cover	
Cockpit cushions	
Bathing platform	
Boarding ladder	stainless steel
Anchor	CQR Plough 15 KG
Anchor chain	
Windlass	manual Vetus
Sea railing	stainless steel
Grab rail (superstructure)	stainless steel
Railing side opening gates	



# BOARNCRUISER 365 NEW LINE

Wiper	2 x
Horn	electric
Fenders	
Mooring lines	
Radio-cd player	Sony
Cockpit speakers	
Speakers in salon	
Fire extinguisher	





# BOARNCRUISER 365 NEW LINE





# BOARNCRUISER 365 NEW LINE



# BOARNCRUISER 365 NEW LINE





# BOARNCRUISER 365 NEW LINE



# BOARNCRUISER 365 NEW LINE





# BOARNCRUISER 365 NEW LINE



# BOARNCRUISER 365 NEW LINE





# BOARNCRUISER 365 NEW LINE

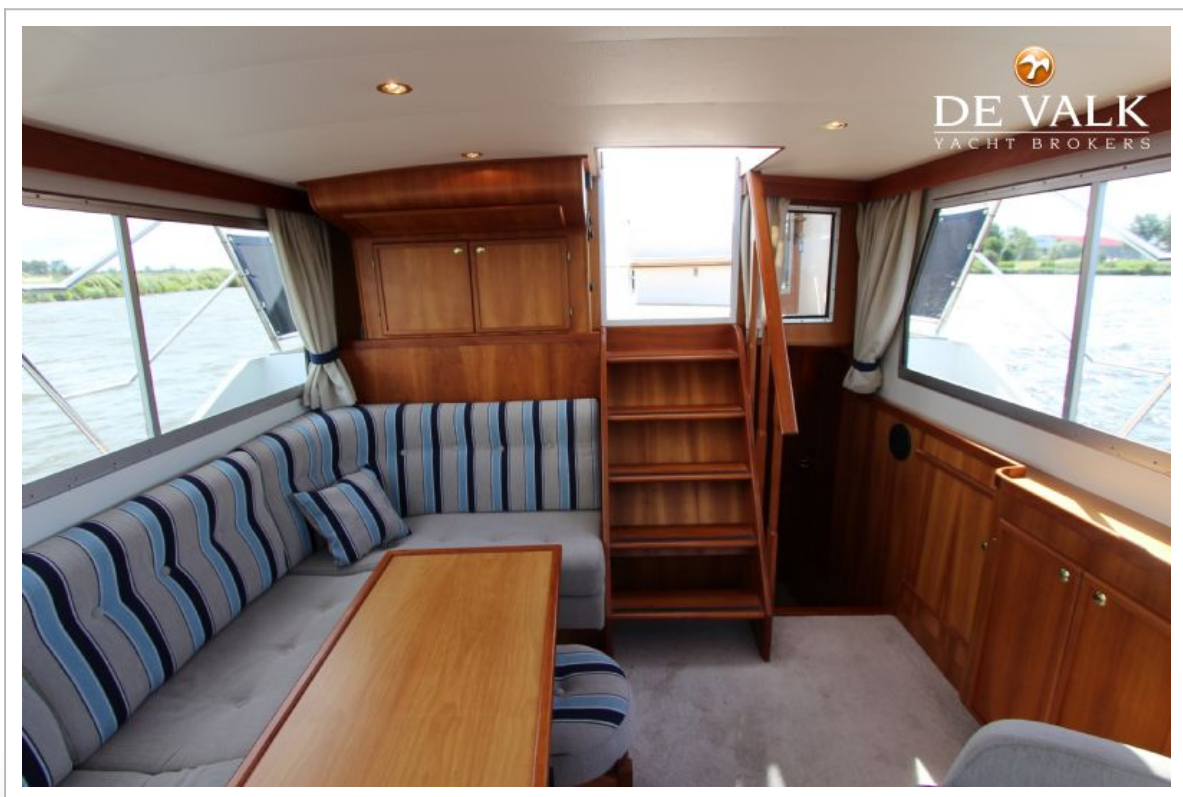
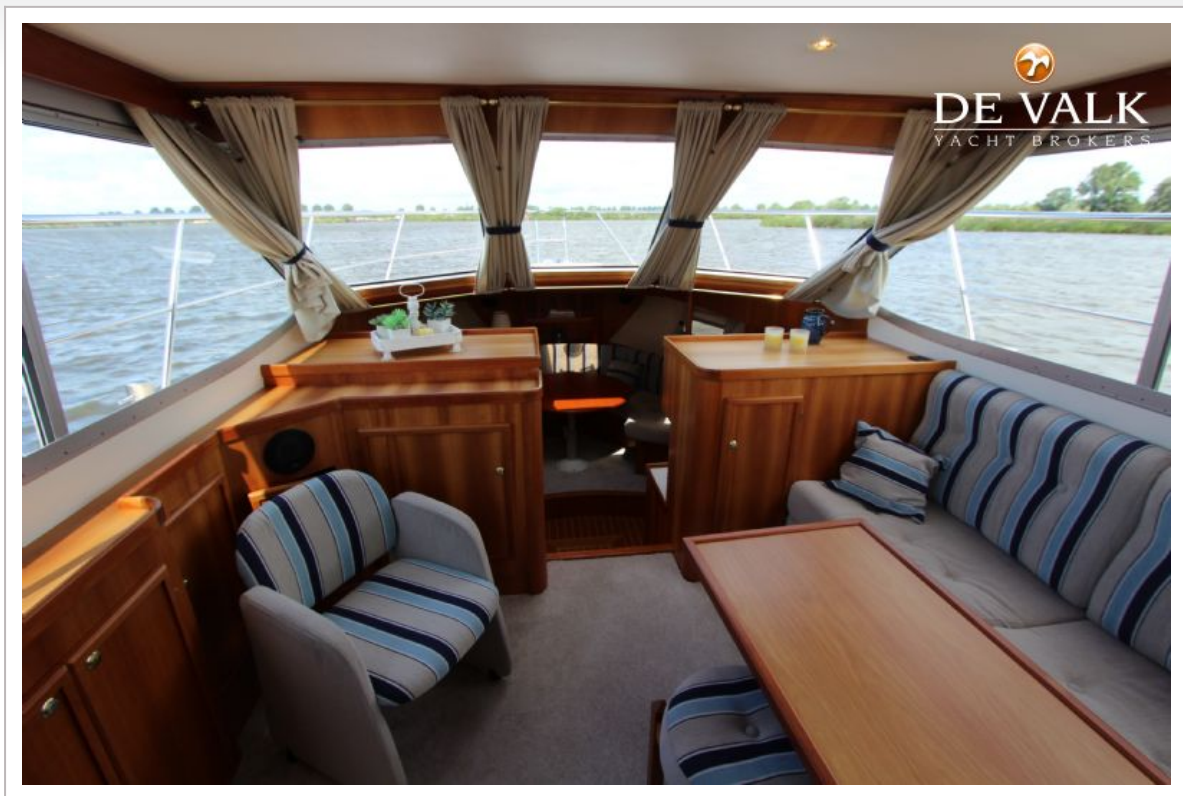




# BOARNCRUISER 365 NEW LINE

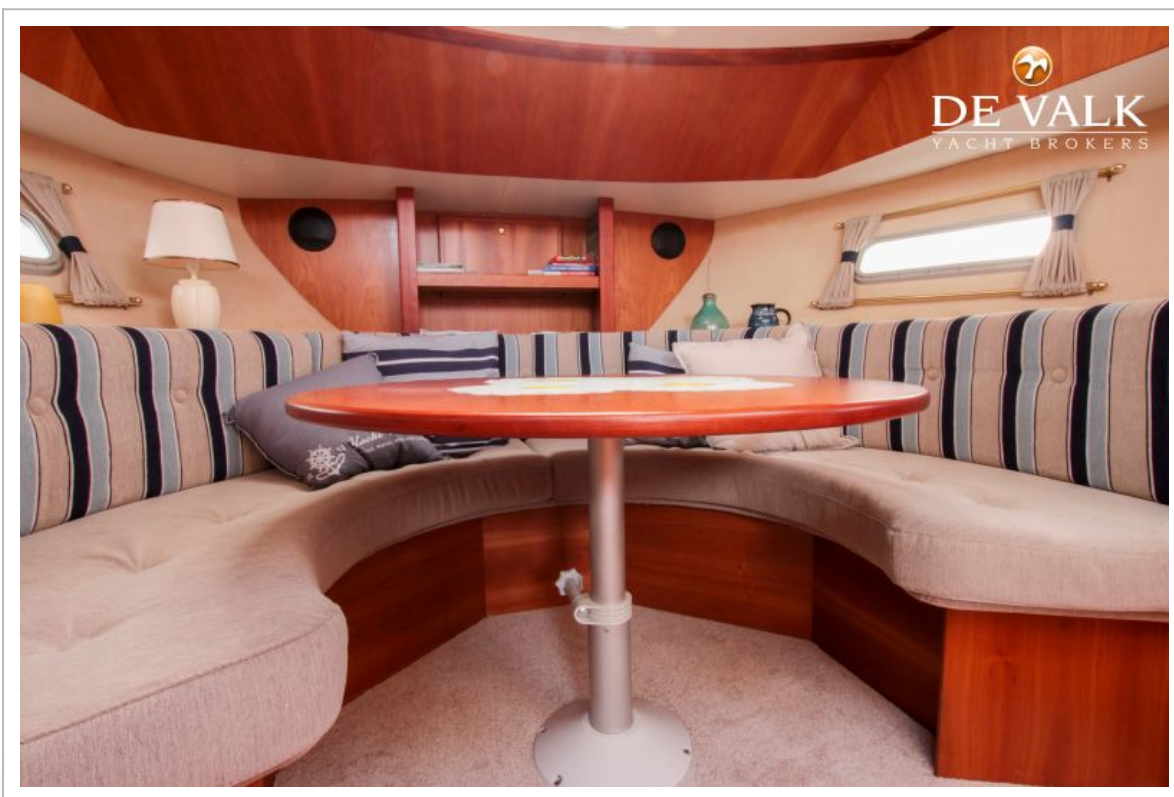


# BOARNCRUISER 365 NEW LINE





# BOARNCRUISER 365 NEW LINE

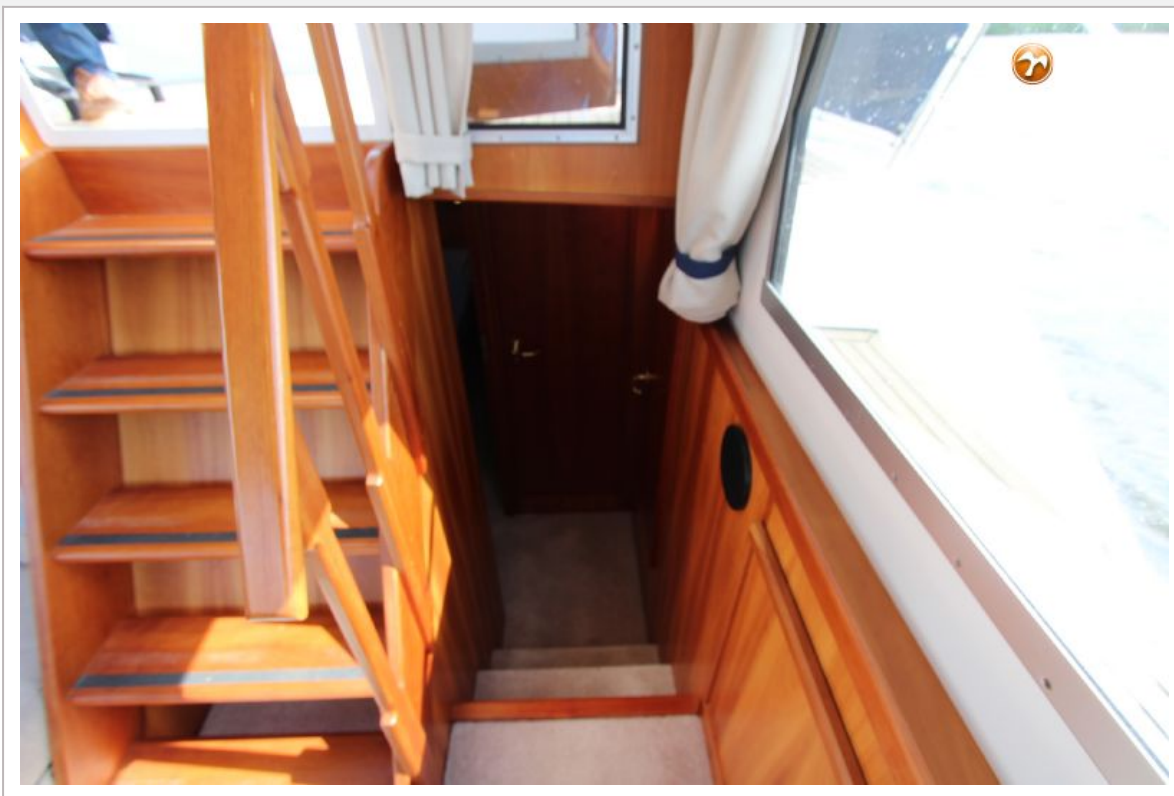


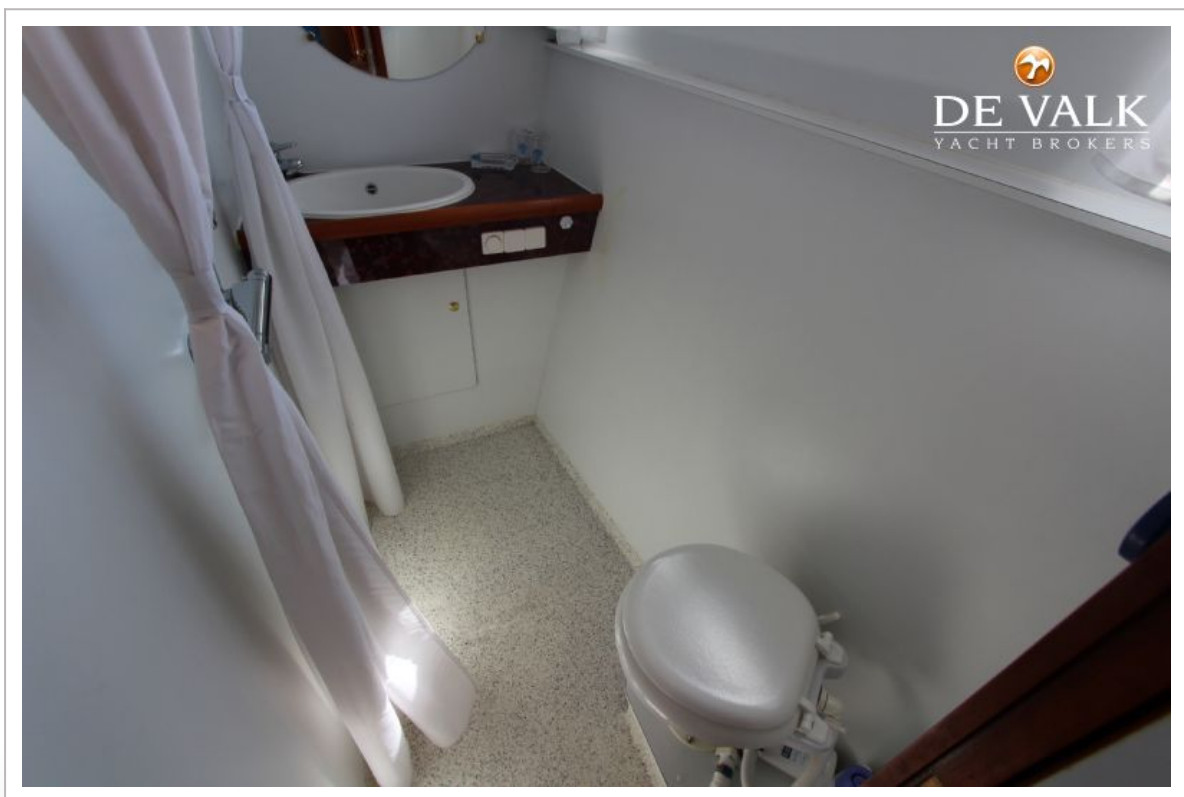
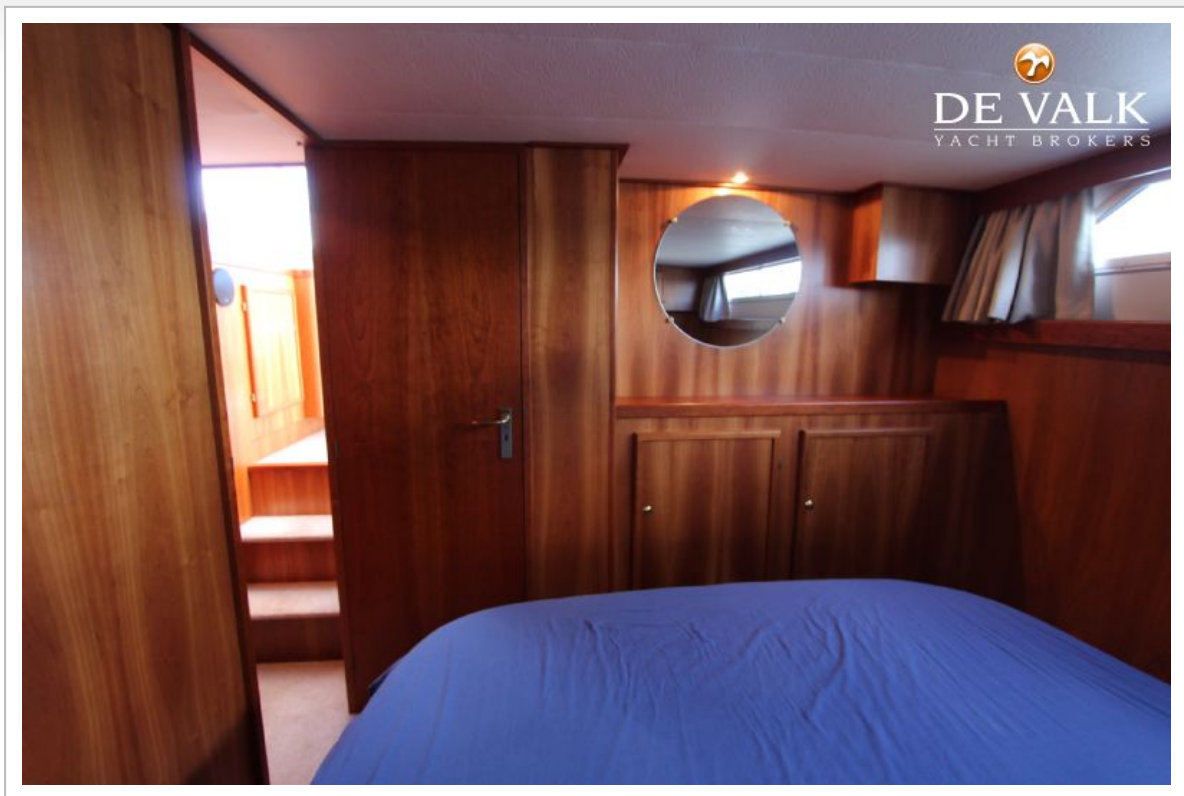
# BOARNCRUISER 365 NEW LINE





# BOARNCRUISER 365 NEW LINE









# BOARNCRUISER 365 NEW LINE

