



DE VALK
YACHT BROKERS



NELSON 33 LANDGUARD



DE VALK
YACHT BROKERS

NELSON 33 LANDGUARD

BROKER'S COMMENTS

Nelson 33 Landguard "Katerina" is built in 1999 at Bootwerk, the Netherlands. She is built under classification CE-C. Equipped with an owner's cabin with V-berth, separate shower and toilet, central heating etc. This Nelson 33 Landguard is a sturdy motoryacht which offers you good accommodation. "Katerina" is for sale at our sales marina in Sneek and you are very welcome to visit her here.

Arne Doodeman

SPECIFICATIONS

Dimensions	10.31 x 3.51 x 1.04 (m)	Builder	Hagebo Jachtbouw - Woudsend
Built	1999	Cabins	1
Material	GRP	Berths	4
Engine(s)	1 x Yanmar 6LYA-UTE Diesel	Hp/Kw	315.00 (hp), 231.53 (kw)
Asking price	sold (VAT)	Lying	at sales office

CONTACT

Sales office	De Valk Sneek	Telephone	+31 (0)515 42 80 30
Address	Zwolsmanweg 7 8606 KC Sneek NL	E-mail	sneek@devalk.nl

DISCLAIMER

These particulars are given in good faith as supplied but cannot be guaranteed.



GENERAL

Model	NELSON 33 LANDGUARD
Type	motor yacht
LOA (m)	10,31
LWL (m)	8,92
Beam (m)	3,51
Draft (m)	1,04
Air draft (m)	2,95
Year built	1999
Builder	Hagebo Jachtbouw - Woudsend
Country	The Netherlands
Designer	Arthur Mursell - TT boat design
Displacement (t)	9,5
CE norm	C
Hull material	GRP
Hull colour	blue
Hull shape	deep-V
Superstructure material	GRP
Rubbing strake	rubber
Deck material	GRP
Deck finish	Treadmaster
Cockpit deck finish	teak
Window frame	aluminium
Window material	glass Front windows double glazed
Deckhatch	1x
Portholes	aluminium 6x
Fuel tank (litre)	900 l. (2x 450 l.)
Level indicator (fuel tank)	Vetus
Freshwater tank (litre)	272 l.
Level indicator (freshwater)	Vetus
Blackwater tank (litre)	120 l.



Level indicator (blackwater)	Vetus
Wheel steering	hydraulic
Inside helm position	yes
Extra info	Landguard hull N33-06

ACCOMMODATION

Cabins	1
Berths	4
Interior	teak
Open cockpit	yes
Pilot house	yes
Saloon	yes
Heating	central heating Webasto
Opening door to cockpit	yes
Galley	yes
Countertop	corian
Sink	stainless steel
Cooker	calor gas Smev 3-burner
Oven	Smev
Fridge	with freezing compartment Coolmatic 65 l.
Hot water system	220V + engine 27 l.
Water pressure system	electrical
Owners cabin	v-bed
Wardrobe	hanging and shelves
Toilet	separate
Toilet system	manual
Wash basin	at the toilet
Shower	separate

MACHINERY

No of engines	1
---------------	---



NELSON 33 LANDGUARD

Make	Yanmar
Type	6LYA-UTE
HP	315,00
kW	231,53
Fuel	diesel
Year installed	1999
Maximum speed (kn)	22
Cruising speed (kn)	15
Engine hours	1150 (24-10-2016)
Engine cooling system	freshwater heat exchanger
Drive	shaft
Engine controls	bowden cable Morse
Gearbox	hydraulic ZF Hurth
Bowthruster	electric Sidepower
Sternthruster	electric Maxpower
Exhaust	watercooled
Propeller type	fixed
Propeller blades	5-bladed
Propeller shaft material	stainless steel 50 mm
Shaft lubrication	oilbath
Manual bilge pump	yes
Electric bilge pump	yes
Start battery	1x
Service battery	2x
Battery charger	Mastervolt charger 12/25-2
Shorepower	with cable
Extra info	Double Racor filter

NAVIGATION

Compass	Silva
Depth sounder/log	Raymarine ST60 Tridata



VHF	Shipmate RS8300
Autopilot	Raymarine ST6000+
Rudder angle indicator	In autopilot
Radar	Raymarine RD418HD (2015)
Radar/GPS/plotter	Raymarine eS127 Hybridtouch (2015)
AIS receiver	Raymarine (2015)

EQUIPMENT

Cockpit cushions	yes
Anchor	Bruce 10 kg.
Anchor chain	yes
Windlass	electrical Quick
Sea railing	stainless steel
Grab rail (superstructure)	stainless steel
Wiper	2x
Horn	yes
Fenders	yes
Mooring lines	yes
Radio-cd player	Philips



NELSON 33 LANDGUARD



NELSON 33 LANDGUARD



NELSON 33 LANDGUARD



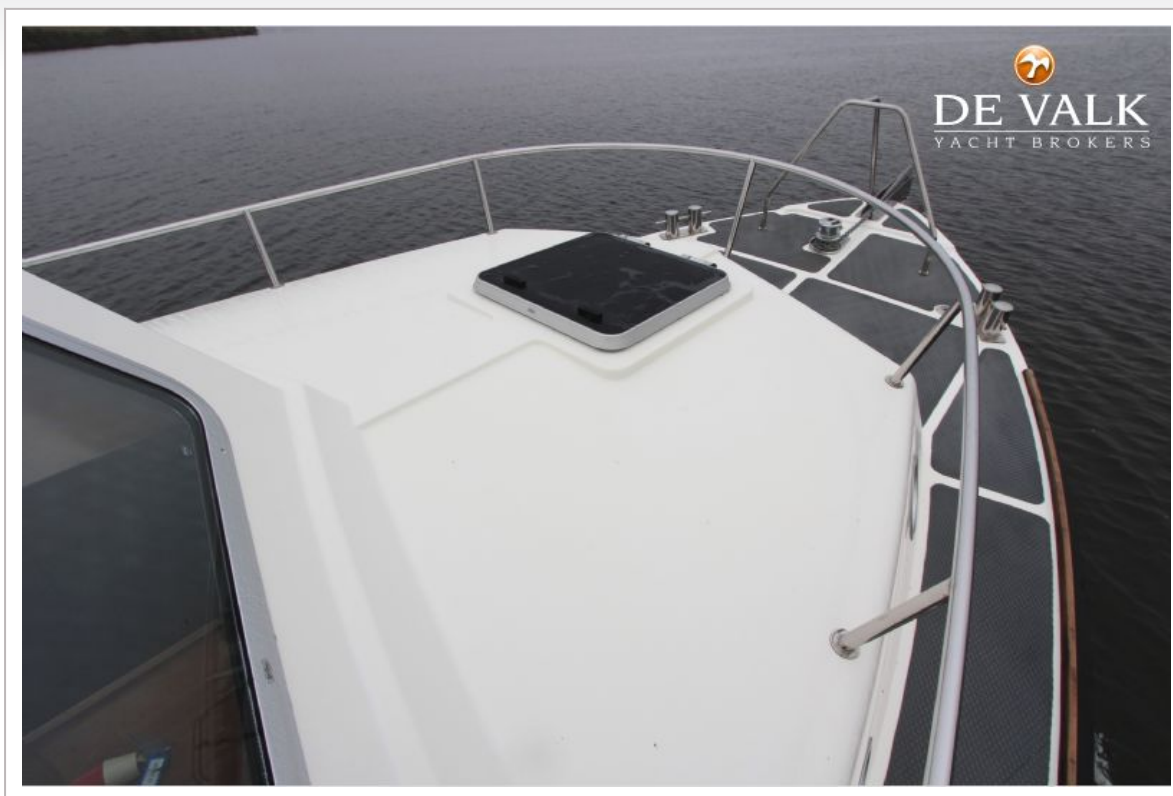
NELSON 33 LANDGUARD



NELSON 33 LANDGUARD



NELSON 33 LANDGUARD



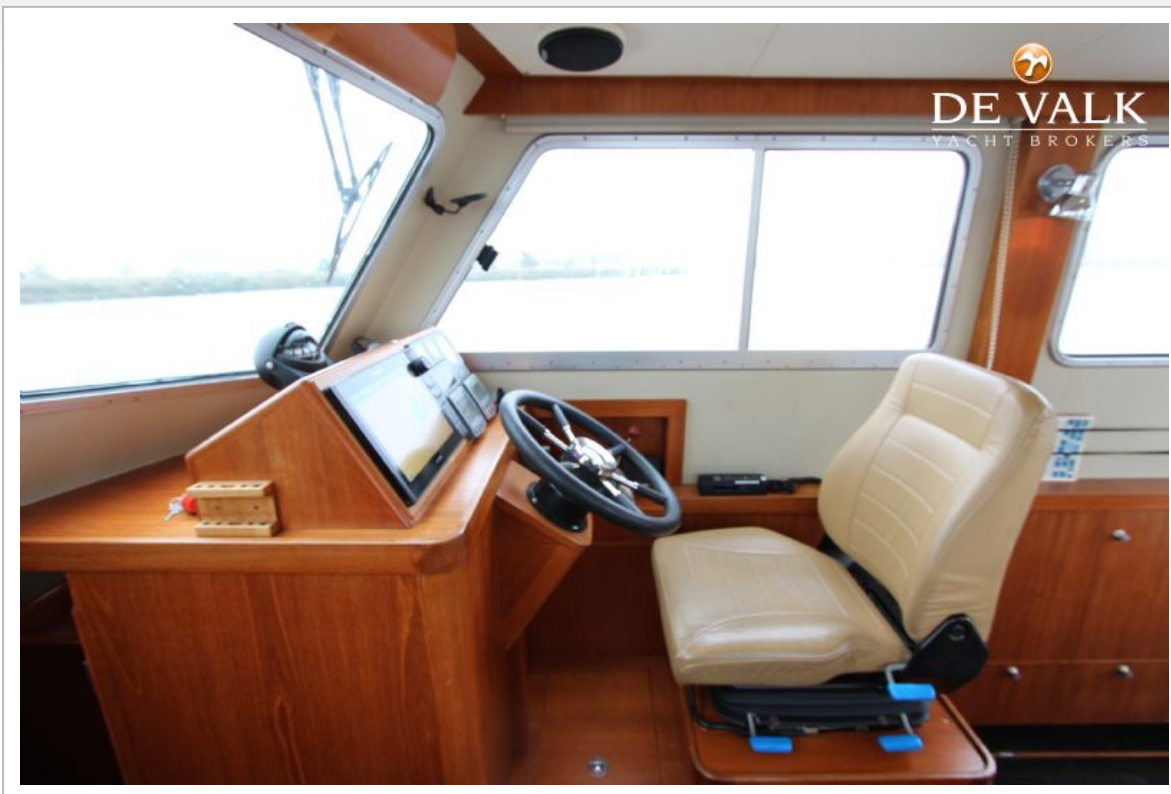
NELSON 33 LANDGUARD



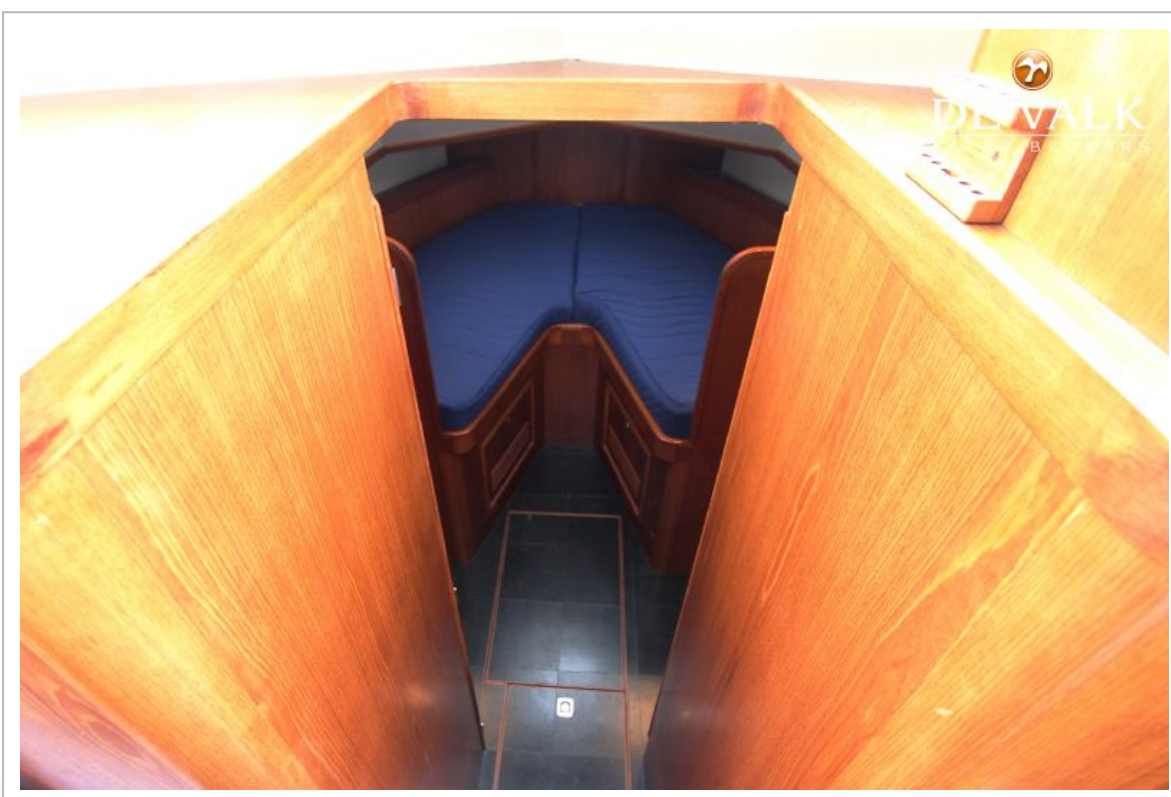
NELSON 33 LANDGUARD



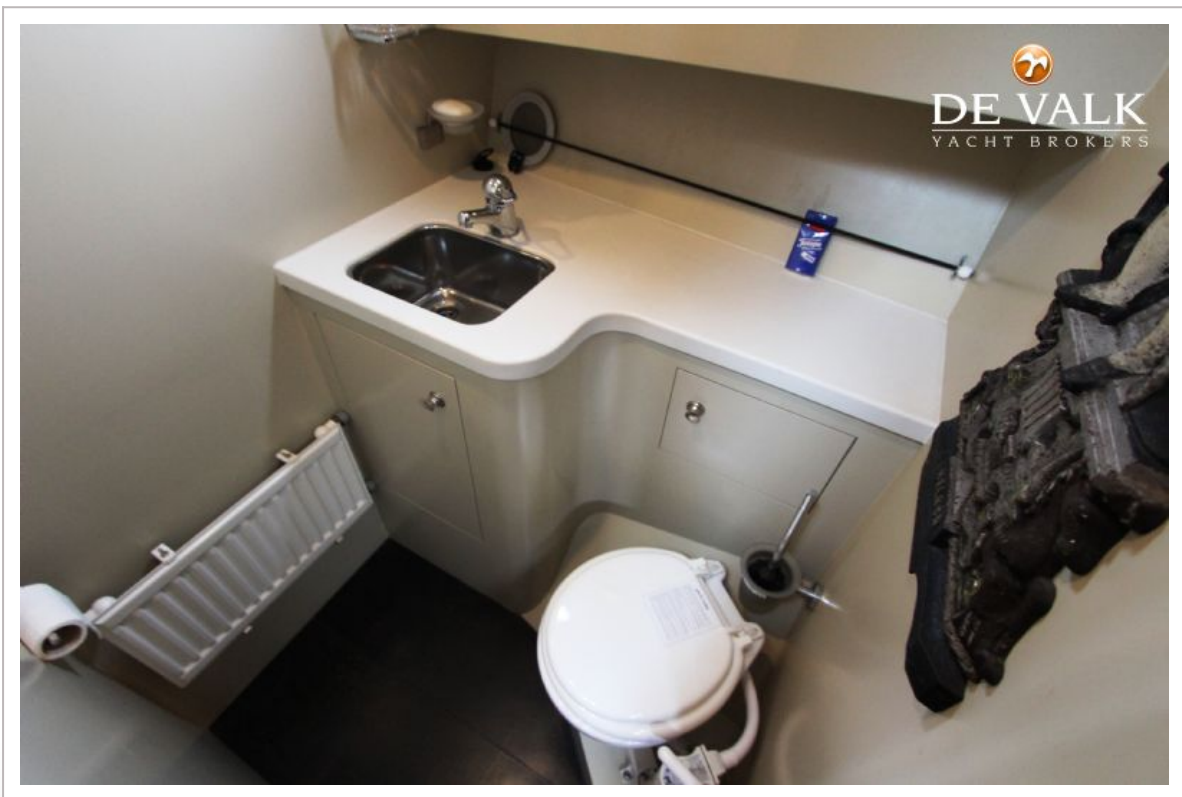
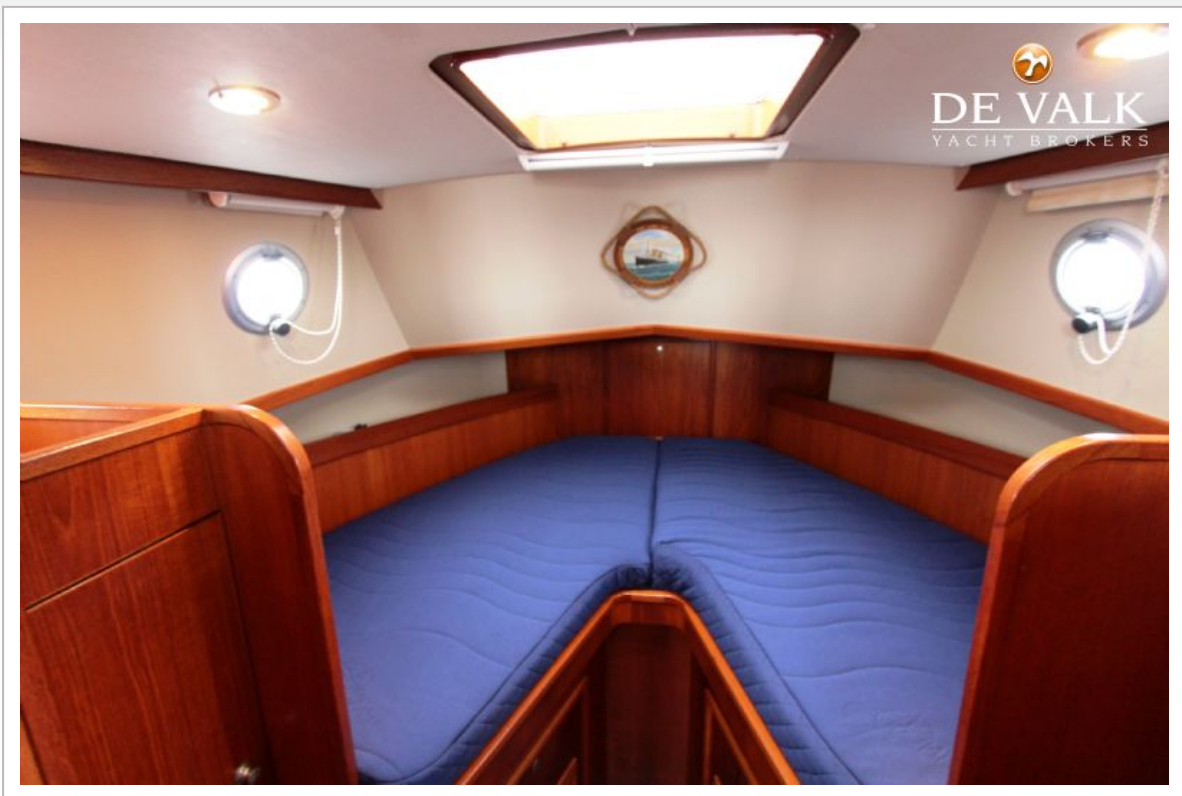
NELSON 33 LANDGUARD



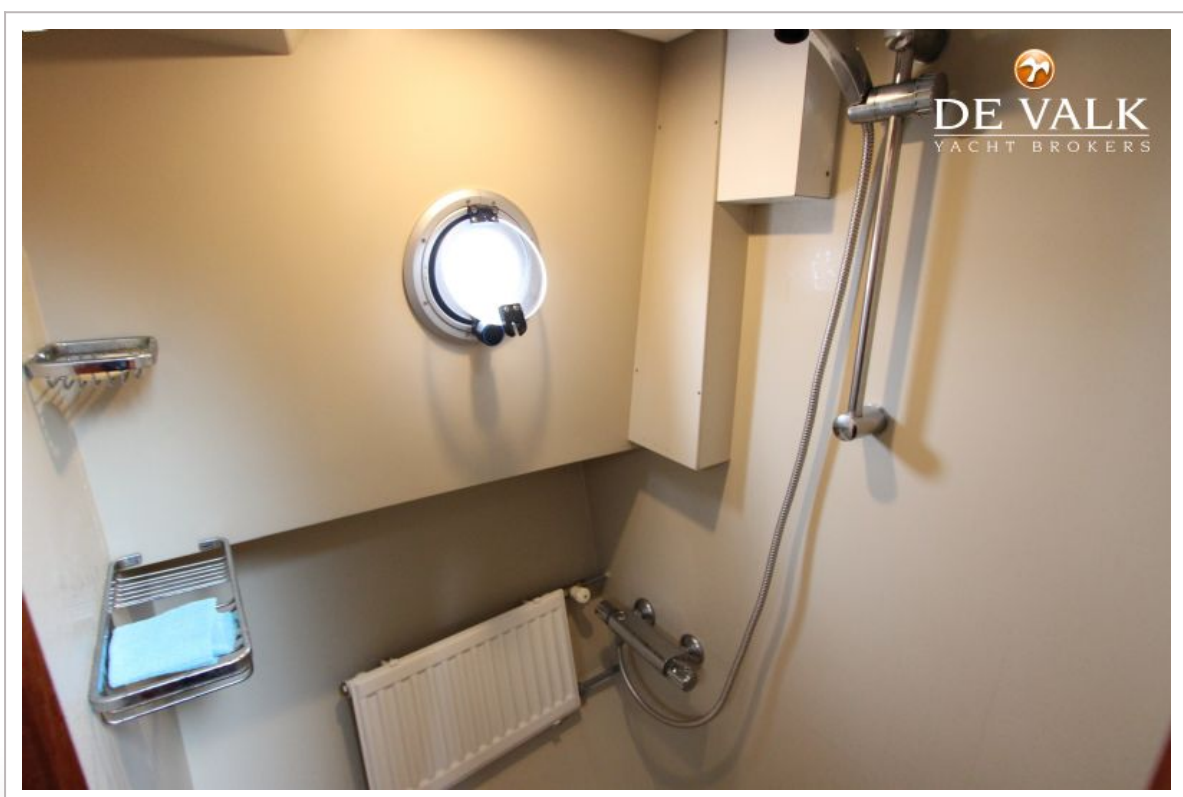
NELSON 33 LANDGUARD



NELSON 33 LANDGUARD



NELSON 33 LANDGUARD



NELSON 33 LANDGUARD

