



DE VALK
YACHT BROKERS



AMS TRAWLER 420



DE VALK
YACHT BROKERS

AMS TRAWLER 420

BROKER'S COMMENTS

This AMS Trawler combines comfort with functionality and quality. She sails easy thanks to her big twin engines and mooring is easy as she has both bow- and stern thruster. She is still in exceptional state of maintenance.

Johan Schootstra

SPECIFICATIONS

Dimensions	14.27 x 4.20 x 1.20 (m)	Builder	AMS
Built	1993	Cabins	2
Material	GRP	Berths	5
Engine(s)	2 x Caterpillar 3208 Diesel	Hp/Kw	2 x 320.00 (hp), 235.20 (kw)
Asking price	sold (VAT)	Lying	at sales office

CONTACT

Sales office	De Valk Sneek	Telephone	+31 (0)515 42 80 30
Address	Zwolsmanweg 7 8606 KC Sneek NL	E-mail	sneek@devalk.nl

DISCLAIMER

These particulars are given in good faith as supplied but cannot be guaranteed.



AMS TRAWLER 420

GENERAL

Model	AMS TRAWLER 420
Type	motor yacht
LOA (m)	14,27
Beam (m)	4,20
Draft (m)	1,20
Air draft (m)	3,70
Year built	1993
Builder	AMS
Country	Germany
Displacement (t)	15
Hull material	GRP

ACCOMMODATION

Cabins	2
Berths	5

MACHINERY

No of engines	2
Make	Caterpillar
Type	3208
HP	320,00
kW	235,20
Fuel	diesel
Year installed	1993
Maximum speed (kn)	17
Engine hours	1000
Drive	shaft



AMS TRAWLER 420



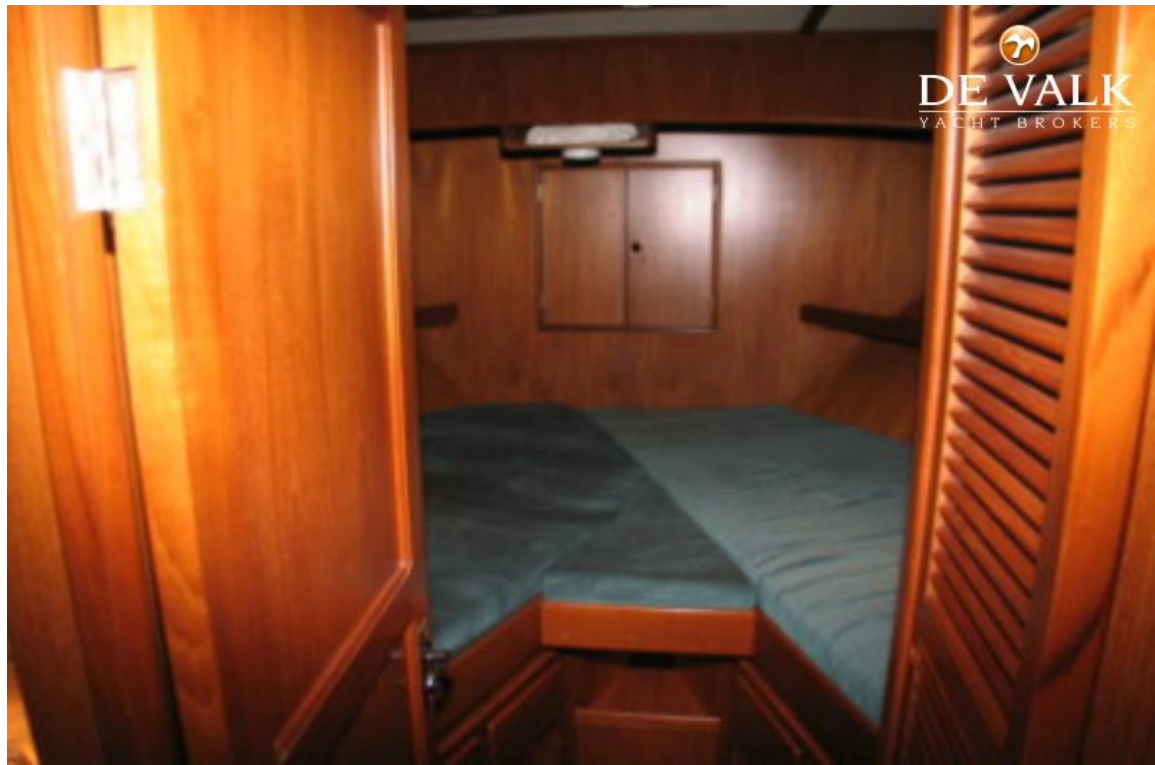
AMS TRAWLER 420



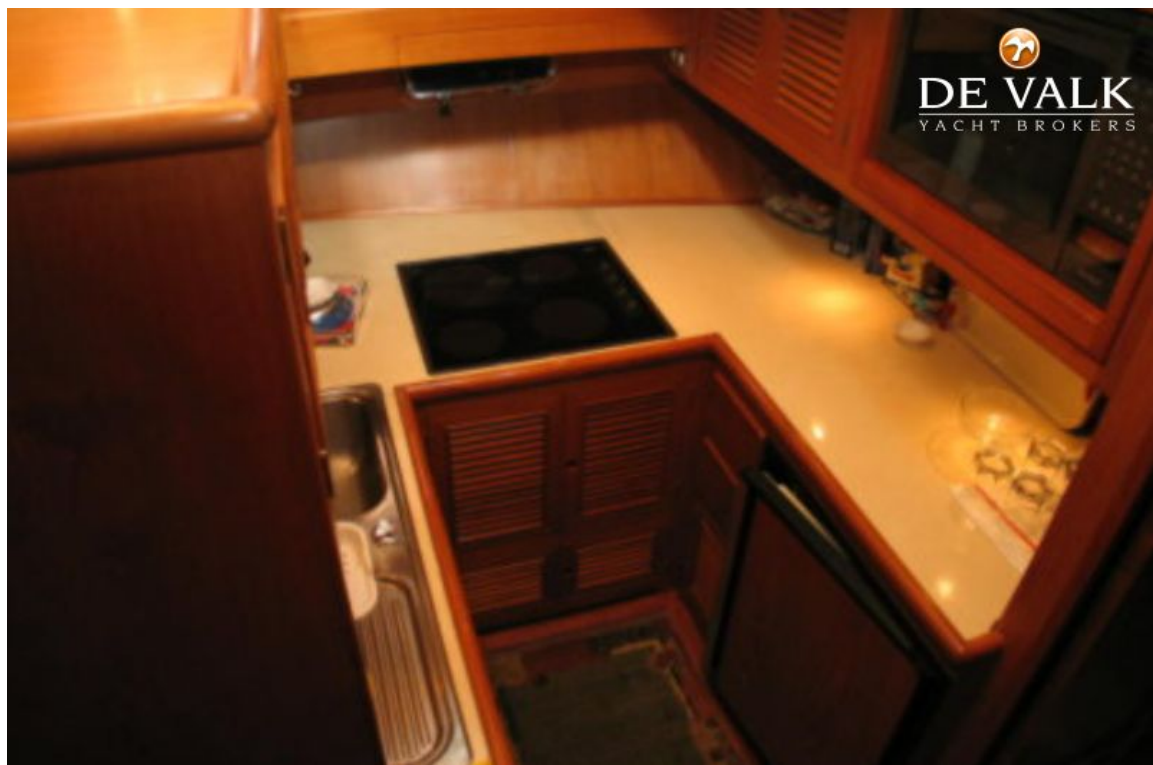
AMS TRAWLER 420



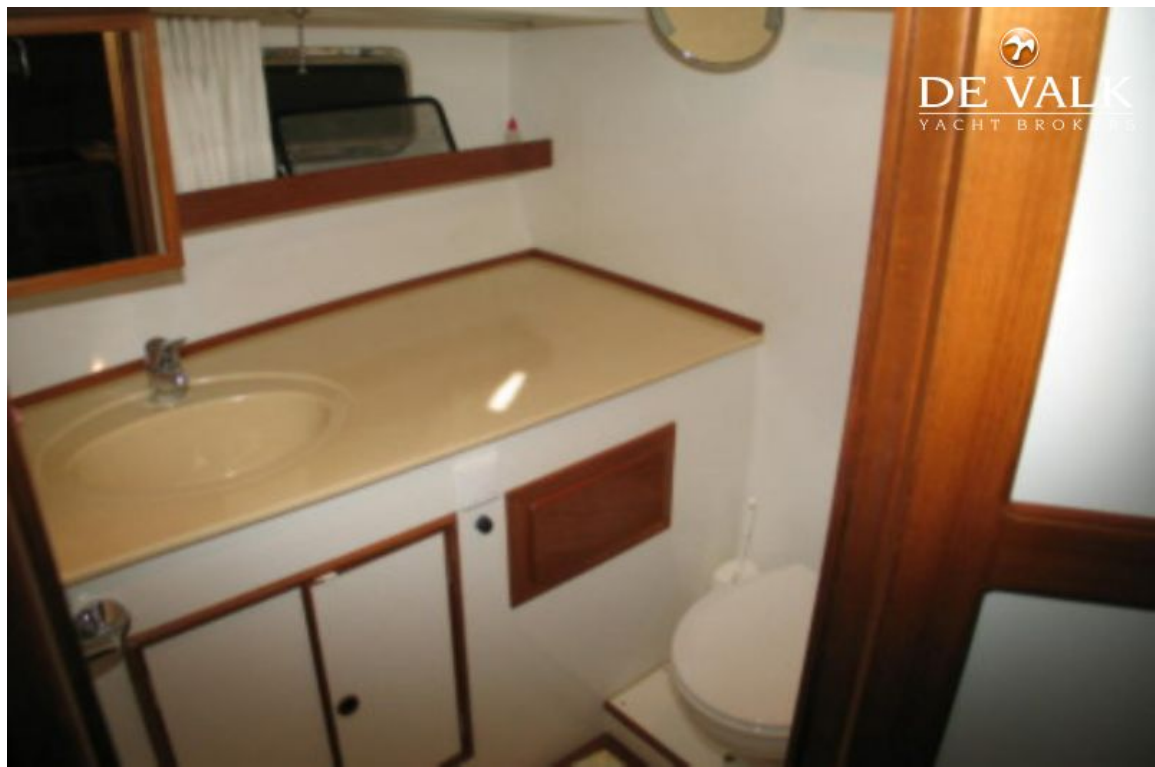
AMS TRAWLER 420



AMS TRAWLER 420



AMS TRAWLER 420



AMS TRAWLER 420

