



NAJAD 490

BROKER'S COMMENTS

Very well maintained Najad 490 from 2002. She has a unique blue hull, is very well and completely equipped. short keel version, electric winches and electric and hydraulic furling sail systems, partly new navigation system. Large saloon, master cabin with island bed and 2 guest cabins. comfortable cockpit all combine to make her feel very stately, This Najad 490 is a yacht for bluewater cruising par excellence - she'd take you almost anywhere without you needing to break a sweat.

Henk Sijbranda

SPECIFICATIONS

Dimensions	15.00 x 4.50 x 2.00 (m)	Builder	Najad Varvet AB
Built	2001	Cabins	3
Material	GRP	Berths	6
Engine(s)	1 x Yanmar 4JH3-HTE diesel	Hp/Kw	96.00 (hp), 70.56 (kw)
Asking price	sold (VAT)	Lying	contact Hindeloopen

CONTACT

Sales office	De Valk Hindeloopen	Telephone	+31 514 52 40 00
Address	Oosterstrand 1 8713 JS Hindeloopen The Netherlands	E-mail	hindeloopen@devalk.nl

DISCLAIMER

These particulars are given in good faith as supplied but cannot be guaranteed.



GENERAL

Model	NAJAD 490
Type	sailing yacht
LOA (m)	15,00
LWL (m)	13,13
Beam (m)	4,50
Draft (m)	2,00
Air draft (m)	21,30
Headroom (m)	2,00
Year built	2001
Launched	2001
Builder	Najad Varvet AB
Country	Sweden
Designer	Judel Vrolijk & Co
Displacement (t)	18,4
Ballast (tonnes)	lead 6,3
CE norm	A
Hull material	GRP
Hull colour	blue
Hull shape	round-bilged
Keel type	fin keel with bulb
Superstructure material	GRP
Rubbing strake	
Deck material	GRP
Deck finish	teak
Superstructure deck finish	teak
Cockpit deck finish	teak
Dorades	6x
Window frame	aluminium
Window material	perspex
Deckhatch	5x Lewmar Ocean + Skyscreen



Portholes	stainless steel 10x
Fuel tank (litre)	stainless steel 605 ltr.
Level indicator (fuel tank)	yes
Freshwater tank (litre)	stainless steel 730 ltr.
Level indicator (freshwater)	yes
Blackwater tank (litre)	stainless steel 2x 70 ltr.
Blackwater tank extraction	deck extraction + pump
Wheel steering	rack & pinion
Emergency tiller	yes

ACCOMMODATION

Cabins	3
Berths	6
Interior	mahogany
Floor	teak and holly
Saloon	yes
Headroom saloon (m)	2 mtr.
Heating	diesel ducted hot air Eberspacher
Navigation center	yes
Chart table	yes
Aft Cabin	Owners cabin
Galley	yes
Countertop	corian
Sink	Double / stainless steel
Cooker	calor gas 2 burner / Optimus + gas remote control switches
Oven	In cooker
Fridge	One well insulated frige, 80 ltr.
Freezer	40 ltr.
Hot water system	220V + engine Boiler 40 ltr
Water pressure system	electrical
Owners cabin	double bed Aft cabin



Bed length (m)	2.00 x 1.50 mtr.
Wardrobe	hanging/drawers/shelves
Bathroom	en suite
Toilet	Yes
Toilet system	electric
Wash basin	Yes
Shower	Yes
Guest cabin 1	v-bed
Bed length (m)	2 mtr.
Wardrobe	hanging and shelves
Guest cabin 2	bunk bed
Bed length (m)	2 mtr.
Wardrobe	hanging and shelves
Bathroom	shared
Toilet	Jabsco
Toilet system	manual
Wash basin	Yes
Shower	Yes

MACHINERY

No of engines	1
Make	Yanmar
Type	4JH3-HTE
HP	96
kW	70,56
Fuel	diesel
Year installed	2001
Maximum speed (kn)	8
Cruising speed (kn)	7
Engine hours	223
Engine cooling system	freshwater heat exchanger



Drive	shaft
Engine controls	bowden cable
Gearbox	mechanical
Bowthruster	MaxPower 24V / 110kg
Exhaust	watercooled
Propeller type	folding
Propeller blades	3
Propeller shaft material	stainless steel
Shaft lubrication	water
Manual bilge pump	1x
Electric bilge pump	3x
Electrical installation	12 / 24 / 220V
Generator	Fischer Panda - 6kw
Start battery	12V - 105Ah
Service battery	24V - 560Ah capacity
Generator battery	12V - 70Ah
Battery monitor	DCC 4000
Battery charger	Victron energy 24V-30Amp
Shorepower	with cable
Insulation transformer	Victron energie STI 30

NAVIGATION

Compass	Suunto
Depth sounder	Raytheon ST60 DEPTH
Log	Raytheon ST60 SPEED
Windset	Raytheon ST60 WIND and CH WIND
Repeater	Raytheon ST60 MULTI
VHF	Shipmate RS 8300
VHF handheld	Icom
Autopilot	Raytheon ST70000+ display
Radar	Raytheon



Radar/GPS/plotter

Raymarine AXIOM PRO

EQUIPMENT

Fixed windscreen

yes

Sprayhood

yes

Cockpit cover

yes

Cockpit table

yes

Bathing platform

yes

Boarding ladder

stainless steel

Bow ladder

yes

Deck shower

At swimming platform

Anchor

Bruce 30kg

Anchor chain

60 mtr. 8mm

Windlass

electrical 24V, 1500W

Capstan

yes

Sea railing

Railing side opening gates

yes

Pushpit

yes

Pulpit

yes

Fenders

yes

Mooring lines

yes

Radio

Fusion ms-ra7n

Cockpit speakers

yes

Speakers in salon

yes

Clock - barometer

yes

Extra info

Three large self draining lockers for anchor, chain, warps, fenders and gasbottles

RIGGING

Rigging

sloop-cutter

Standing rigging

wire



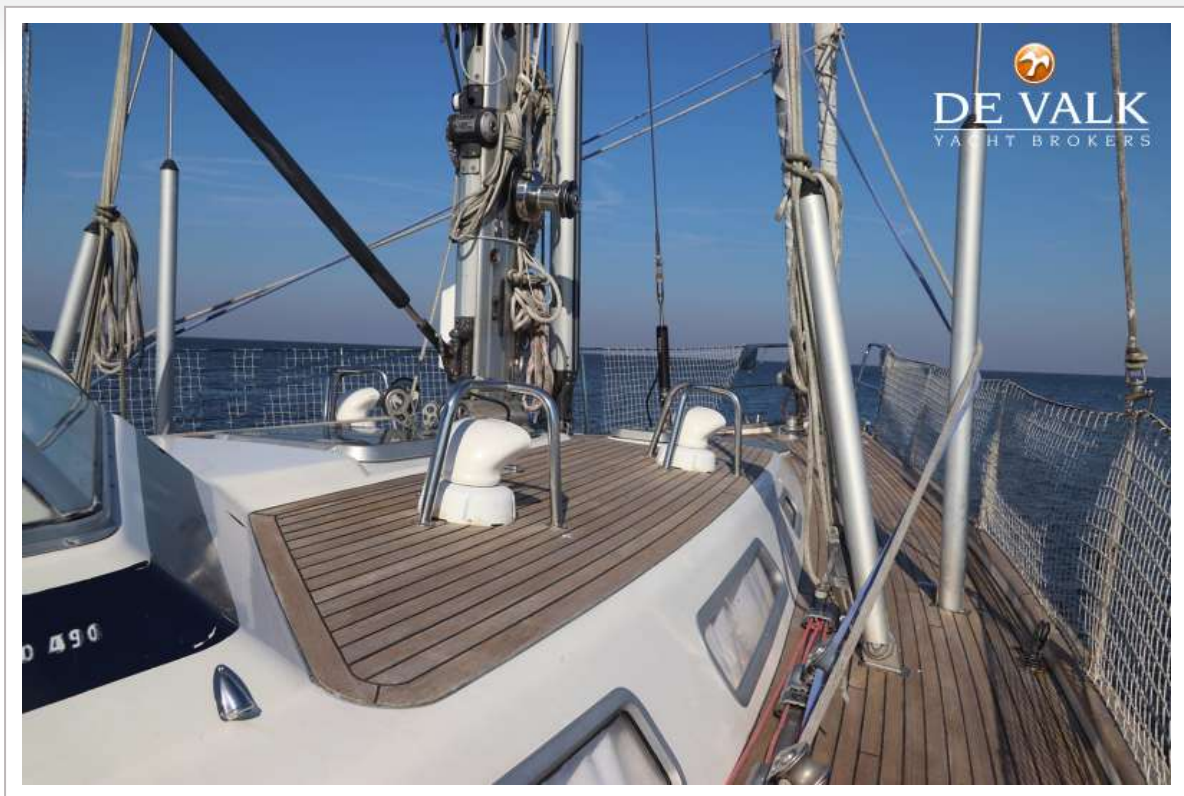
Brand mast	Seldén
Material mast	aluminium
Spreaders	3 pair
Keel stepped mast	yes
Mainsail	62m ²
Stoway mast	hydraulically operated
Cutterstay	yes
Jib	Cutter jib 35m ²
Genoa	75m ²
Genoa furler	Bamar - Electric operated
Cutter furler	Bamar - Electric operated
Gennaker	160m ²
Spinnaker	192m ²
Stormjib	yes
Reefing System	main in-mast furling
Backstay adjuster	hydraulic Navtec
Boomvang	hydraulic Navtec
Primary sheet winch	Andersen 46 STE + 46ST, stainless steel, two speed, self-tailing winches
Secondary sheet winch	Andersen 52 STE + 52ST, stainless steel, two speed, self-tailing winches
Genoa sheetwinches	2x Andersen 68 STE stainless steel, two speed, self-tailing winches
Spi-pole	aluminium



NAJAD 490



NAJAD 490



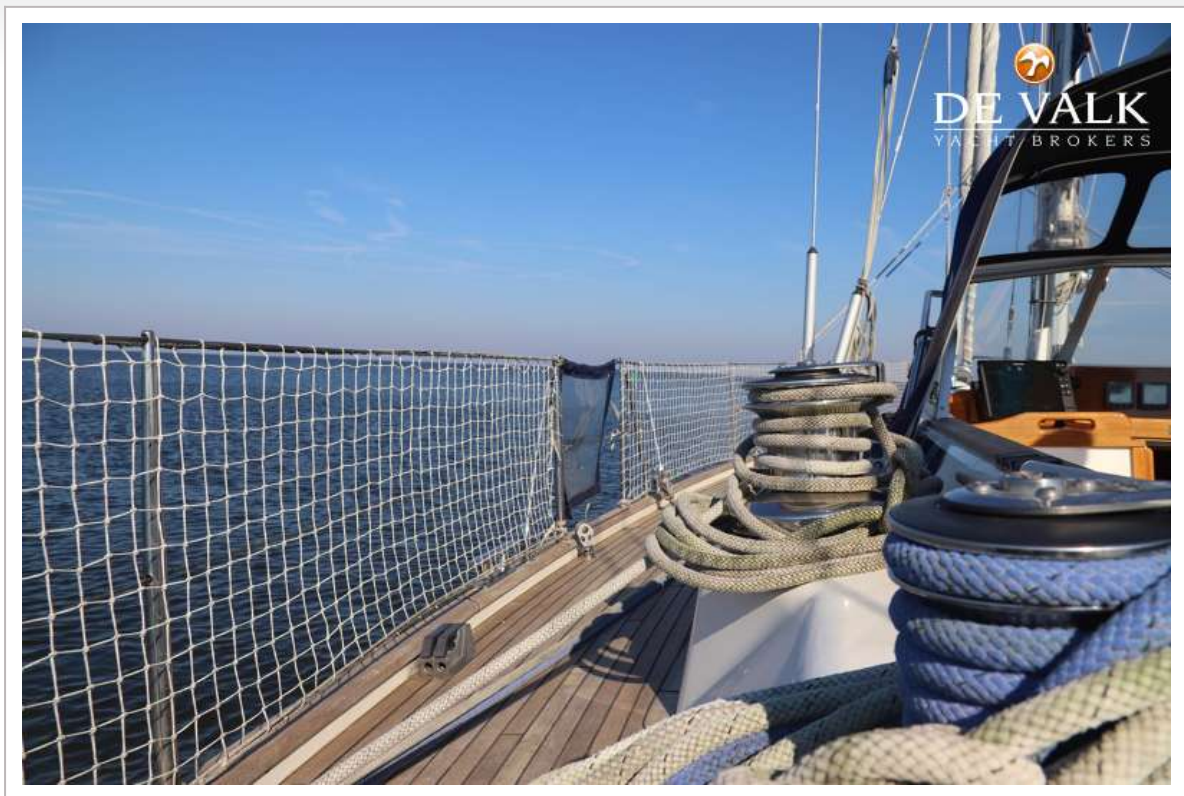
NAJAD 490



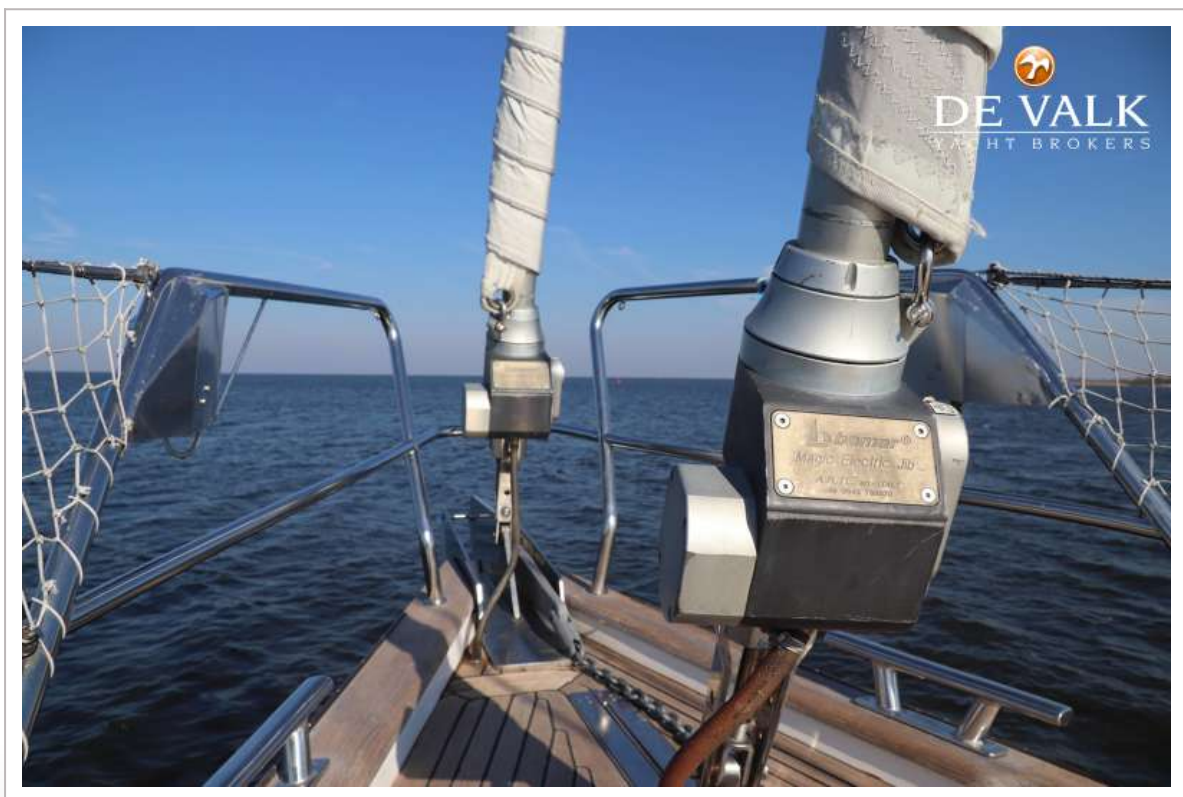
NAJAD 490



NAJAD 490



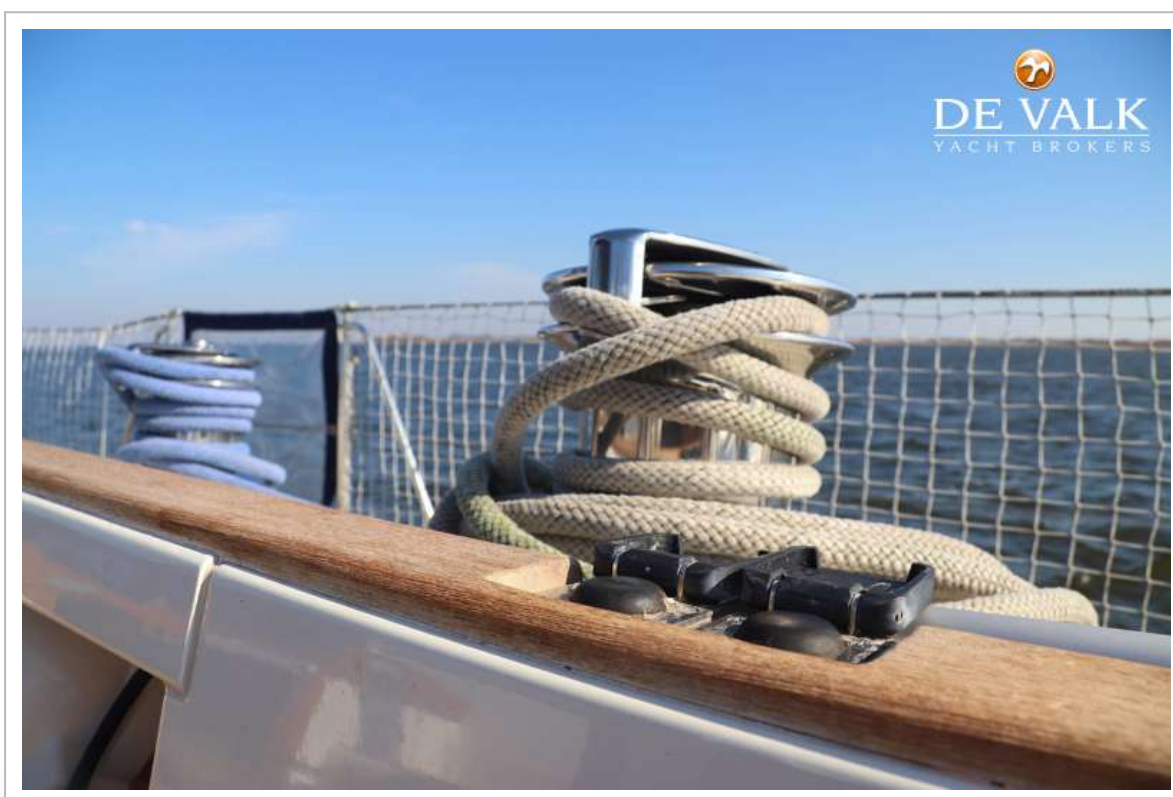
NAJAD 490



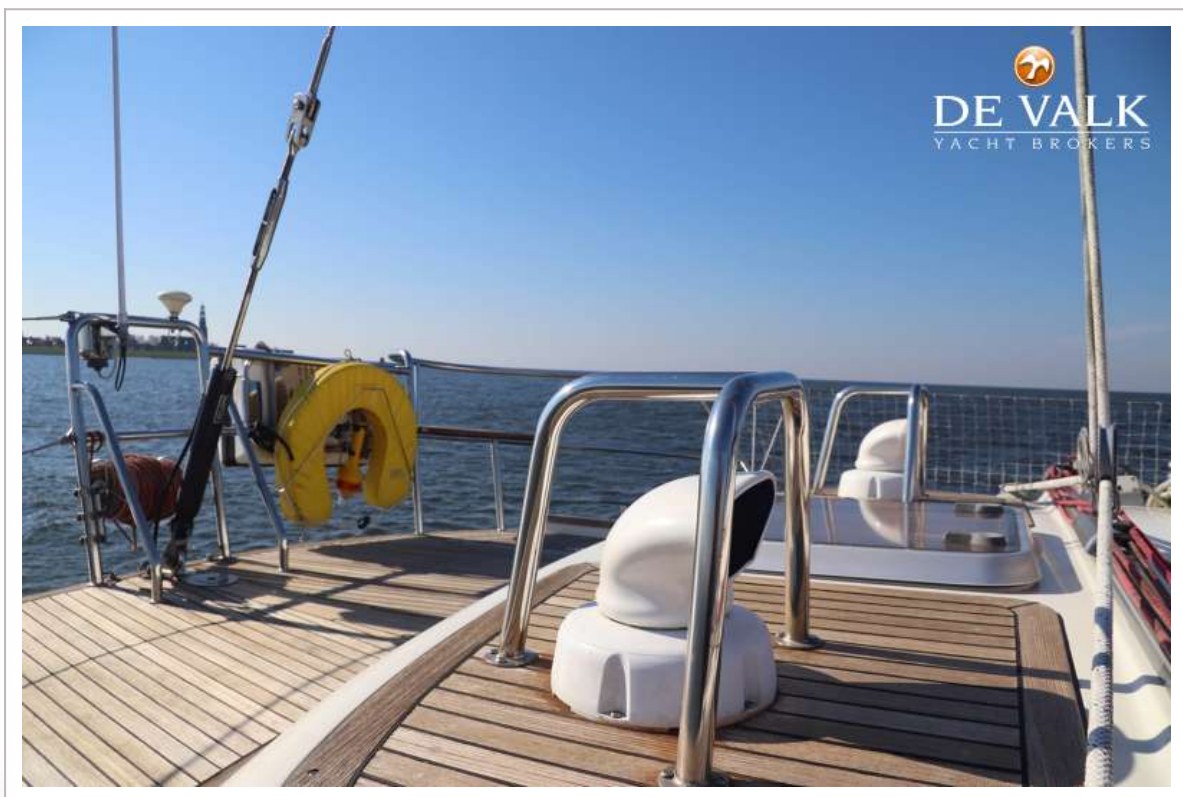
NAJAD 490



NAJAD 490



NAJAD 490



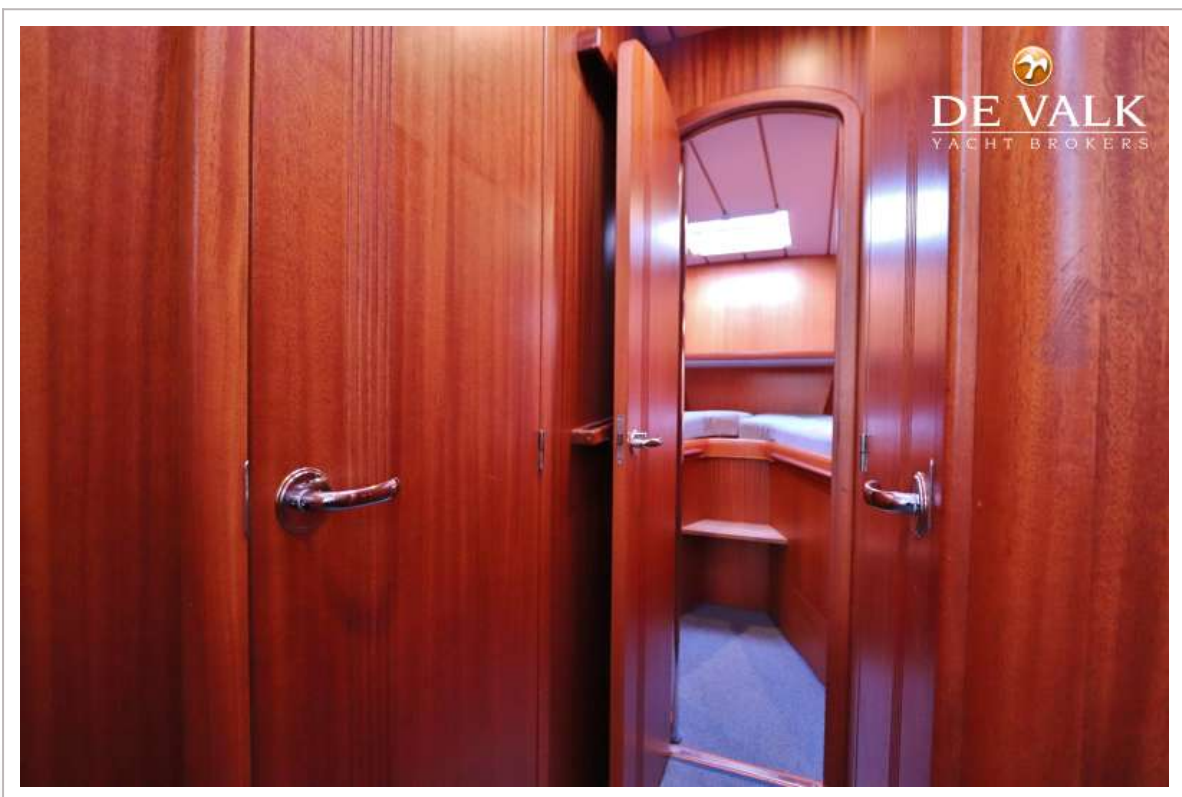
NAJAD 490



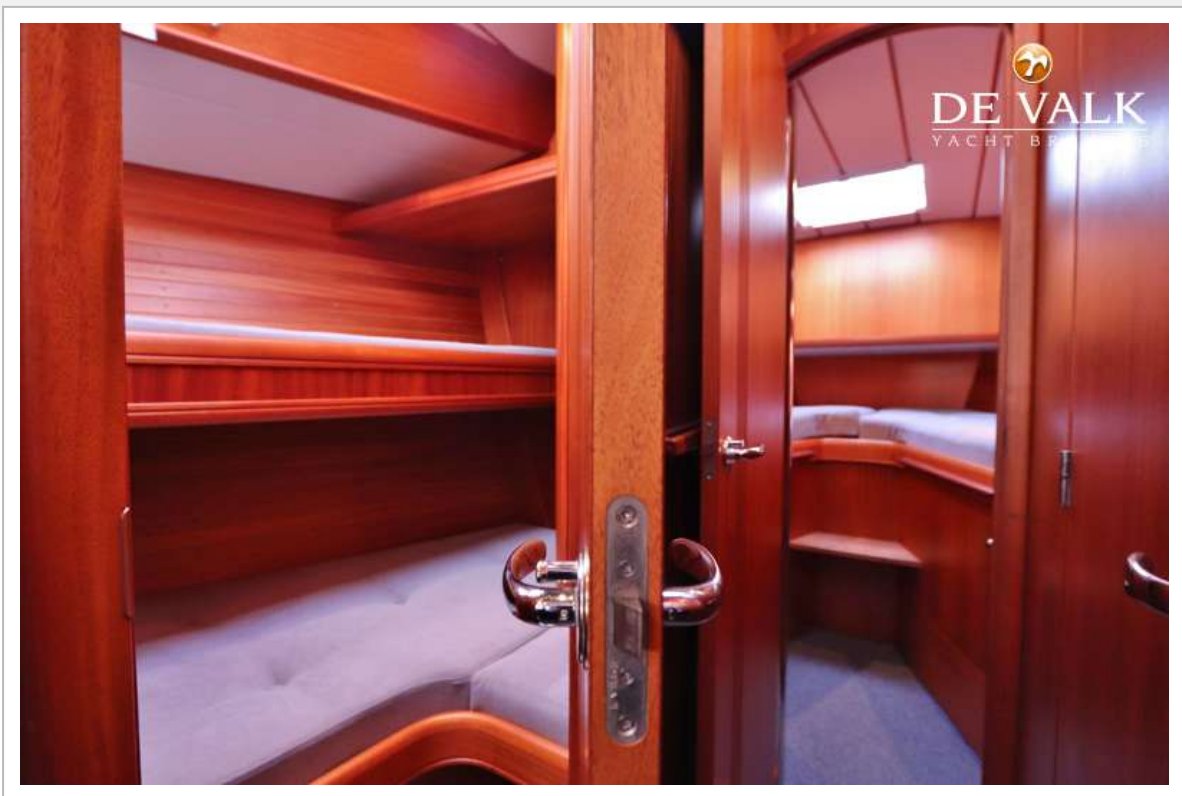
NAJAD 490

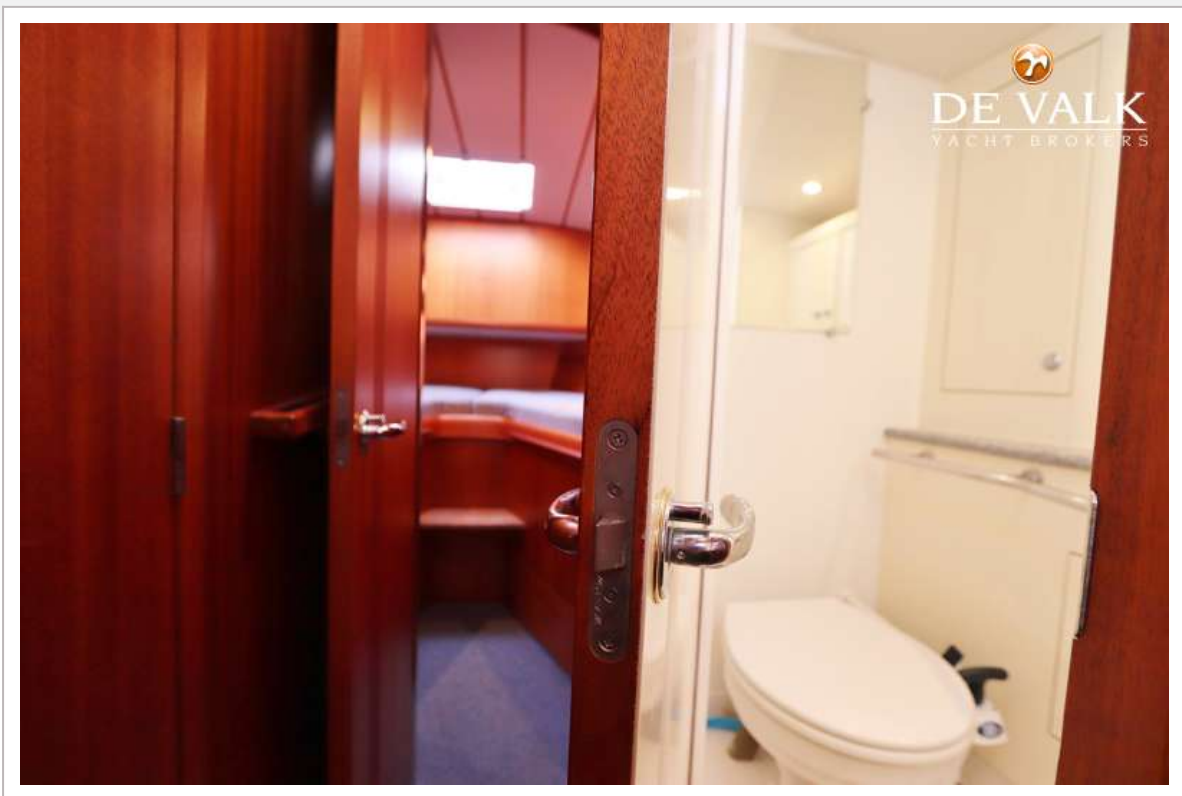


NAJAD 490

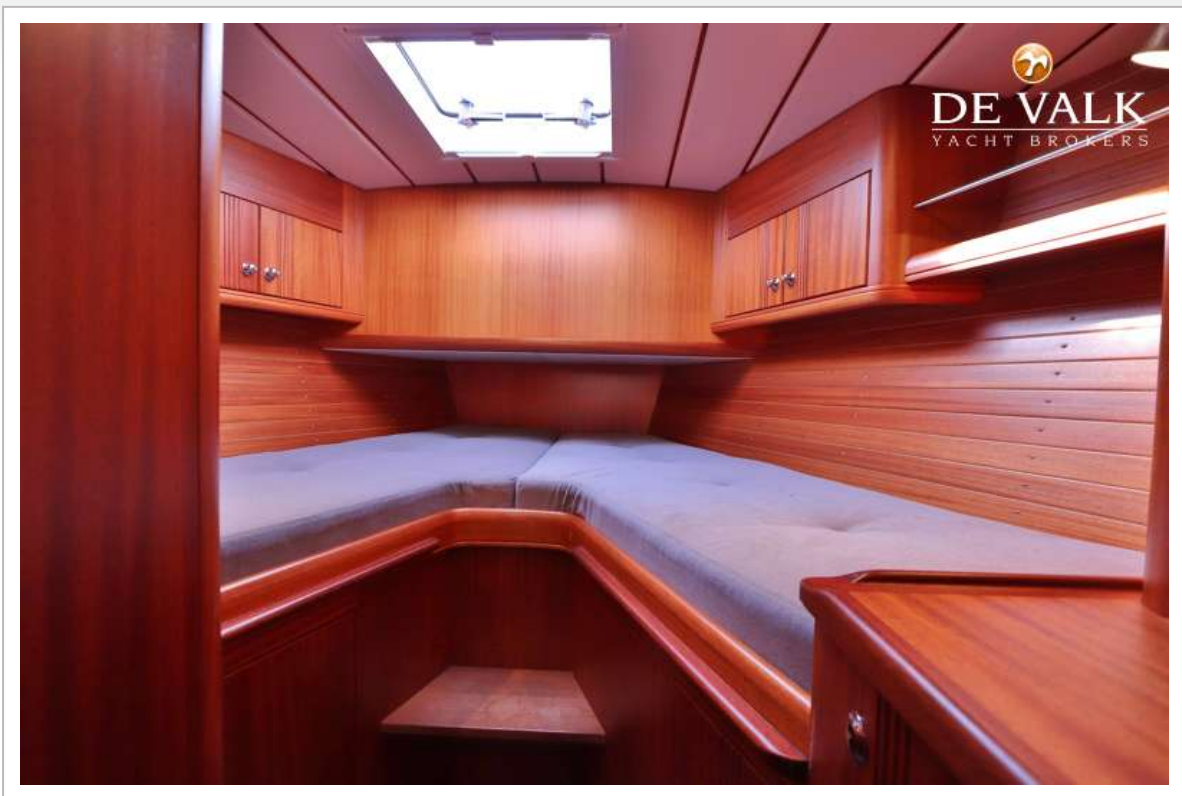


NAJAD 490





NAJAD 490



NAJAD 490



NAJAD 490



NAJAD 490



