



DE VALK
YACHT BROKERS



BAVARIA 39 CRUISER



DE VALK
YACHT BROKERS

BAVARIA 39 CRUISER

VAN DE MAKELAAR

Spacious, comfortable, safe and easy to handle, the Bavaria 39 Cruiser was an instant success upon introduction. This Bavaria 39 comes well equipped, in excellent condition and readily available. Ample accommodations, headroom and stowage space with three separate cabins for optimum privacy and comfort. An very enjoyable yacht and easy to operate.

Johan Schootstra

SPECIFICATIES

| | | | |
|-------------------|--------------------------------|----------------------|------------------------|
| Afmetingen | 12.14 x 3.97 x 1.85 (m) | Bouwer | Bavaria Yachtbau |
| Bouwjaar | 2006 | Hutten | 3 |
| Materiaal | Polyester | Slaapplaatsen | 7 |
| Motor(en) | 1 x Volvo penta MD 2040 diesel | Pk/Kw | 40.00 (pk), 29.40 (kw) |
| Vraagprijs | verkocht (BTW) | Ligplaats | contact Hindeloopen |

CONTACT

| | | | |
|----------------|---|-----------------|-----------------------|
| Kantoor | De Valk Hindeloopen B.V. | Telefoon | +31 514 52 40 00 |
| Adres | Oosterstrand 1 8713 JS Hindeloopen NL | E-mail | hindeloopen@devalk.nl |

DISCLAIMER

Hoewel er uiterste zorg besteed is aan de correctheid, volledigheid en actualiteit van onze informatie kunnen hieraan geen rechten worden ontleend.



BAVARIA 39 CRUISER

ALGEMEEN

| | |
|-------------------------------|--------------------|
| Model | BAVARIA 39 CRUISER |
| Type | zeiljacht |
| Lengte (m) | 12,14 |
| Breedte (m) | 3,97 |
| Diepgang (m) | 1,85 |
| Doorvaarhoogte (m) | 17,50 |
| Stahoogte (m) | 1,95 |
| Bouwjaar | 2006 |
| Gebouwd door | Bavaria Yachtbau |
| Land | Duitsland |
| Ontwerper | J&J design |
| Waterverplaatsing (t) | 7,6 |
| Ballast (ton) | 2,5 tonnes |
| CE norm | A |
| Romp materiaal | polyester |
| Romp kleur | wit |
| Materiaal opbouw | polyester |
| Afwerking kuip | teak |
| Raammateriaal | perspex |
| Brandstoftank (liter) | 120 |
| Inhoudsmeter (brandstoftank) | ja |
| Drinkwatertank (liter) | 360 |
| Grijswatertank (liter) | On deck |
| Inhoudsmeter (grijswatertank) | ja |
| Buiten stuurstand | ja |
| Noodhelmstok | ja |

ACCOMMODATIE

| | |
|---------------|---|
| Hutten | 3 |
| Slaapplaatsen | 7 |



BAVARIA 39 CRUISER

| | |
|---------------------|-----------------------------|
| Interieur | mahonie |
| Indeling | 1 hut voor, 2 hutten achter |
| Stahoogte salon (m) | 1,95 |
| Verwarming | diesel hete lucht Webasto |
| Kaartentafel | ja |
| Keuken | ja |
| Aanrechtblad | ja |
| Kooktoestel | 2 - burner |
| Oven | ja |
| Koelkast | ja |
| Warmwatersysteem | ja |
| Waterdruksysteem | ja |
| Eigenaarshut | ja |
| Lengte bed (m) | Neptune matrassen 2,10 |
| Kledingkast | ja |
| Badkamer | ja |
| Toilet | ja |
| Wasbak | ja |
| Gastenhut 1 | ja |
| Kledingkast | ja |
| Badkamer | ja |
| Toilet | ja |
| Gastenhut 2 | ja |
| Kleerkast | ja |
| Wasbak | ja |
| Douche | ja |

MOTOR(EN)

| | |
|----------------|-------------|
| Aantal motoren | 1 |
| Merk | Volvo penta |
| Type | MD 2040 |



BAVARIA 39 CRUISER

| | |
|-----------------------|--------------|
| Pk | 40,00 |
| kW | 29,40 |
| Brandstof | diesel |
| Geïnstalleerd in jaar | 2009 |
| Motoruren | 180 |
| Aandrijving | sail-drive |
| Keerkoppeling | ja |
| Boegschroef | ja |
| Type schroef | klap Volvo |
| Handlenspomp | ja |
| Elektrische lenspomp | ja |
| Bilge alarm | ja |
| Startaccu | 1 |
| Lichtaccu | 2 |
| Boegschroefaccu | 1 |
| Acculader | ja |
| Omvormer | ja |
| Windgenerator | Ruthwind 311 |
| Zonnecellen | 1 |
| Walstroom | ja |

NAVIGATIE

| | |
|-------------------|------------------------|
| Kompas | 1 |
| Dieptemeter | Raymarine ST60 Tridata |
| Log | Raymarine ST60 Tridata |
| Windmeetset | Raymarine ST60 |
| GPS | Furuno GPS Navigator |
| Radar/GPS/plotter | Raymarine C70 |

UITRUSTING

| | |
|---------|----|
| Buiskap | ja |
|---------|----|



BAVARIA 39 CRUISER

| | |
|-------------------|------------------------|
| Kuipentent | ja |
| Bimini | ja |
| Anker | ja |
| Ankerketting | 30 |
| Anker 2 | ja |
| Bijboot | opblaasbaar Honda 2006 |
| Buitenboordmotor | 5 pk Mercury 2006 |
| Radar reflektor | ja |
| Radio-cd speler | ja |
| DVD speler | ja |
| Speakers in salon | 2 |
| Brandblusser | 2 |

TUIGAGE

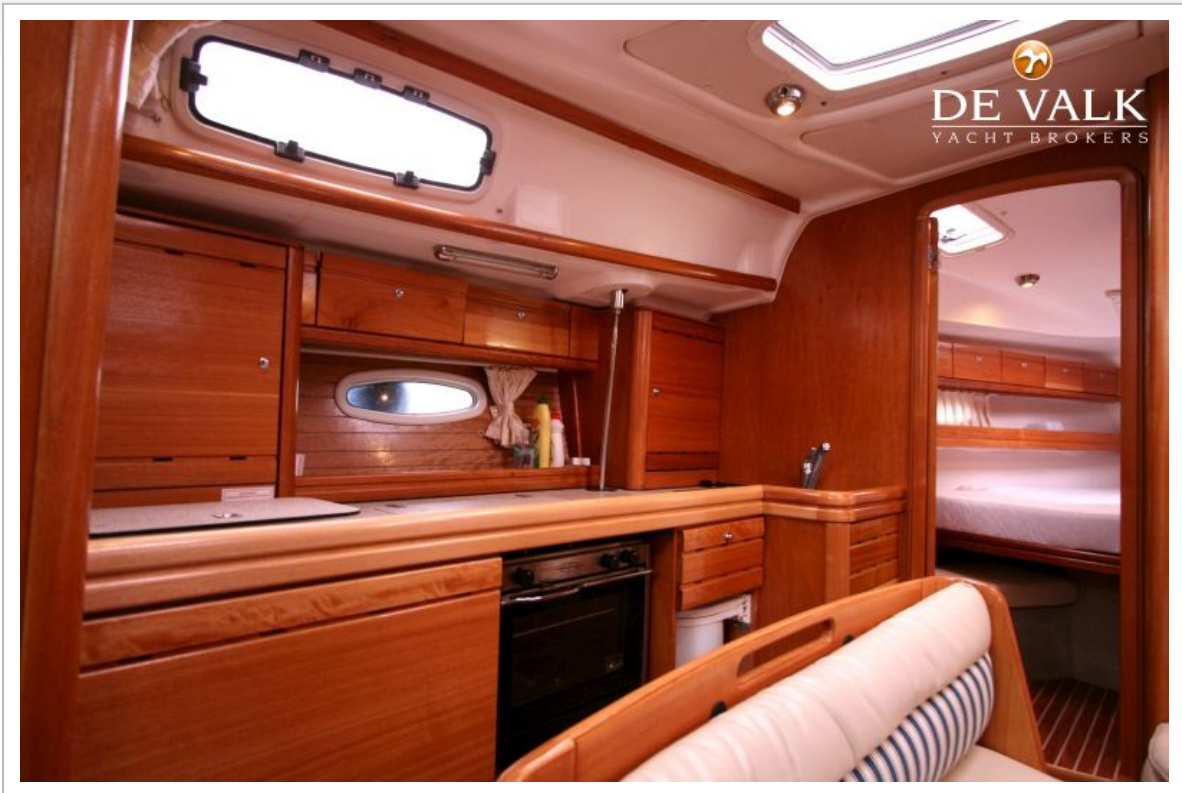
| | |
|----------------------|-----------|
| Materiaal mast | aluminium |
| High aspect | 2011 |
| Genua | 2006 |
| Genua rolreefsysteem | ja |
| Genua hoes | ja |
| Giekneerhouder | ja |



BAVARIA 39 CRUISER



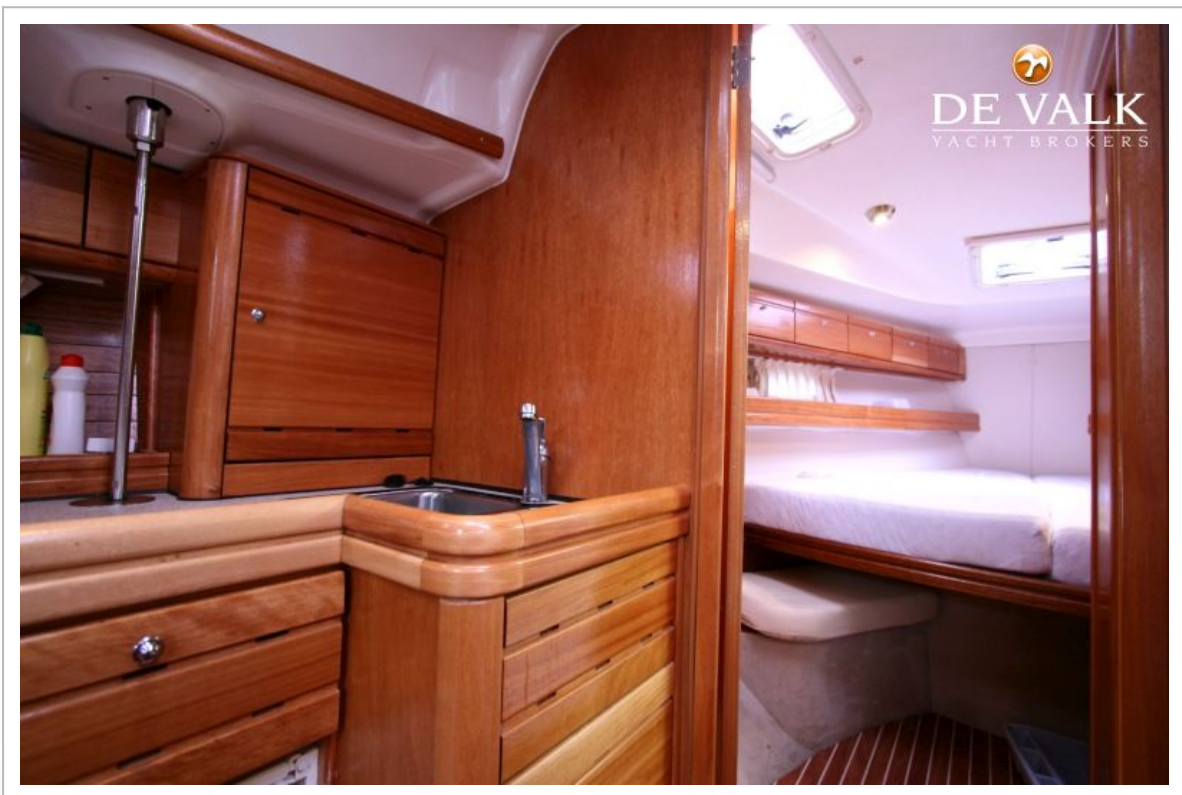
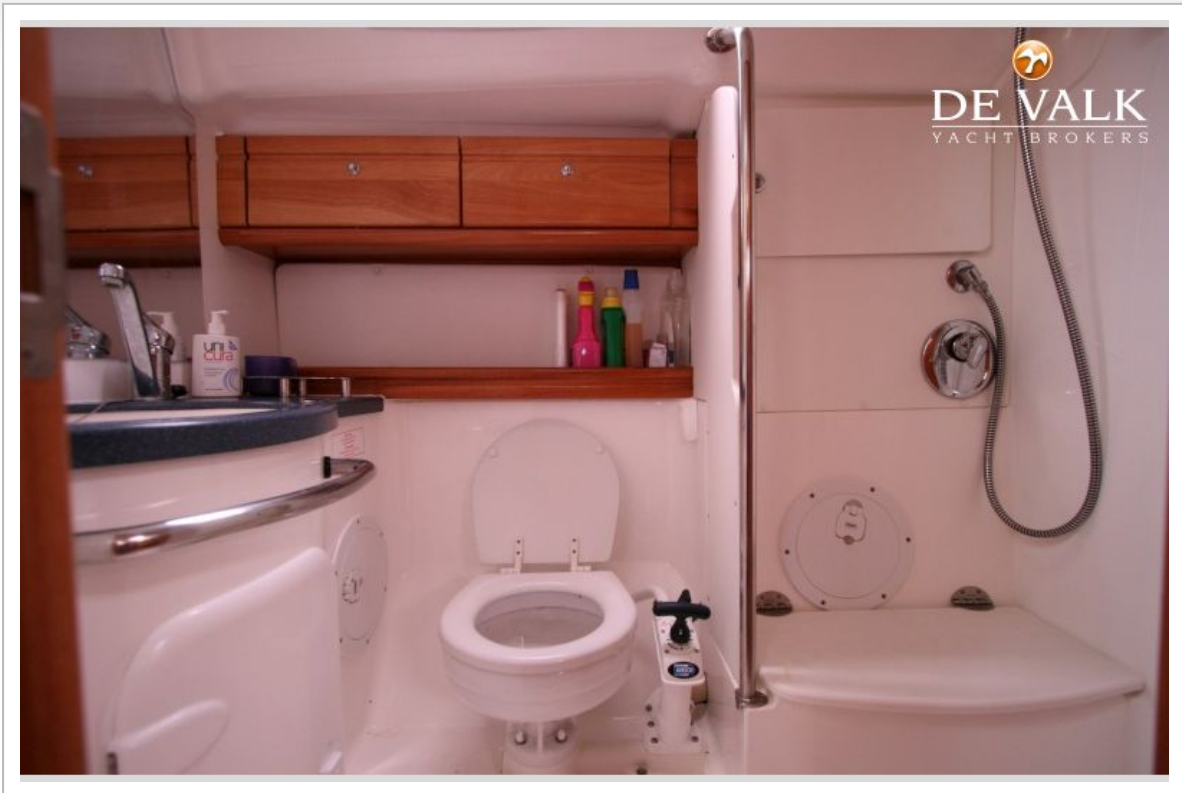
BAVARIA 39 CRUISER



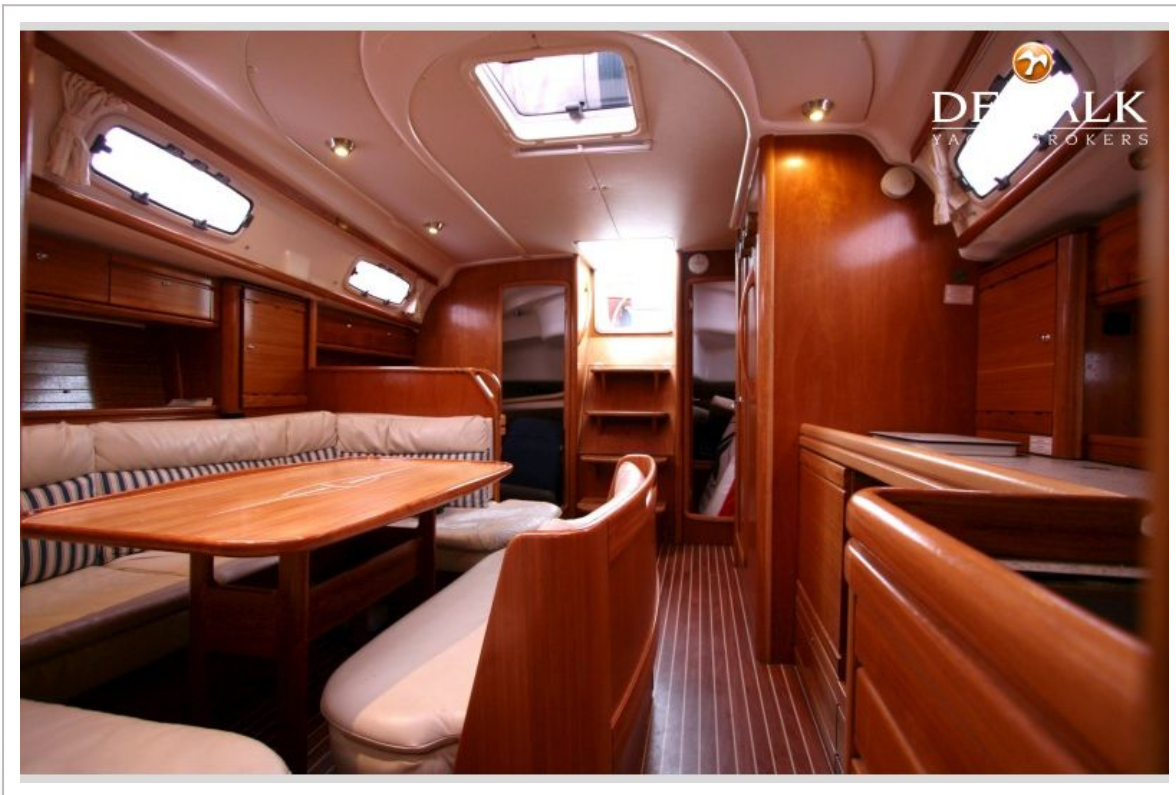
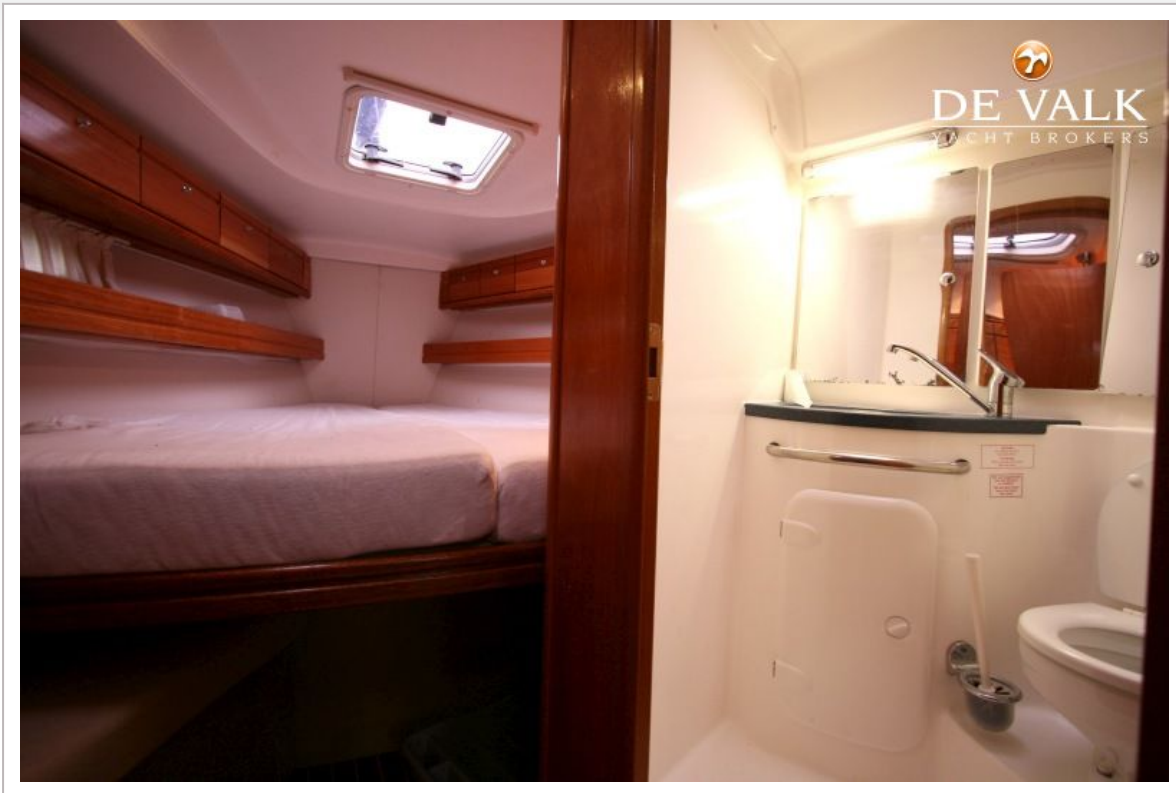
BAVARIA 39 CRUISER



BAVARIA 39 CRUISER



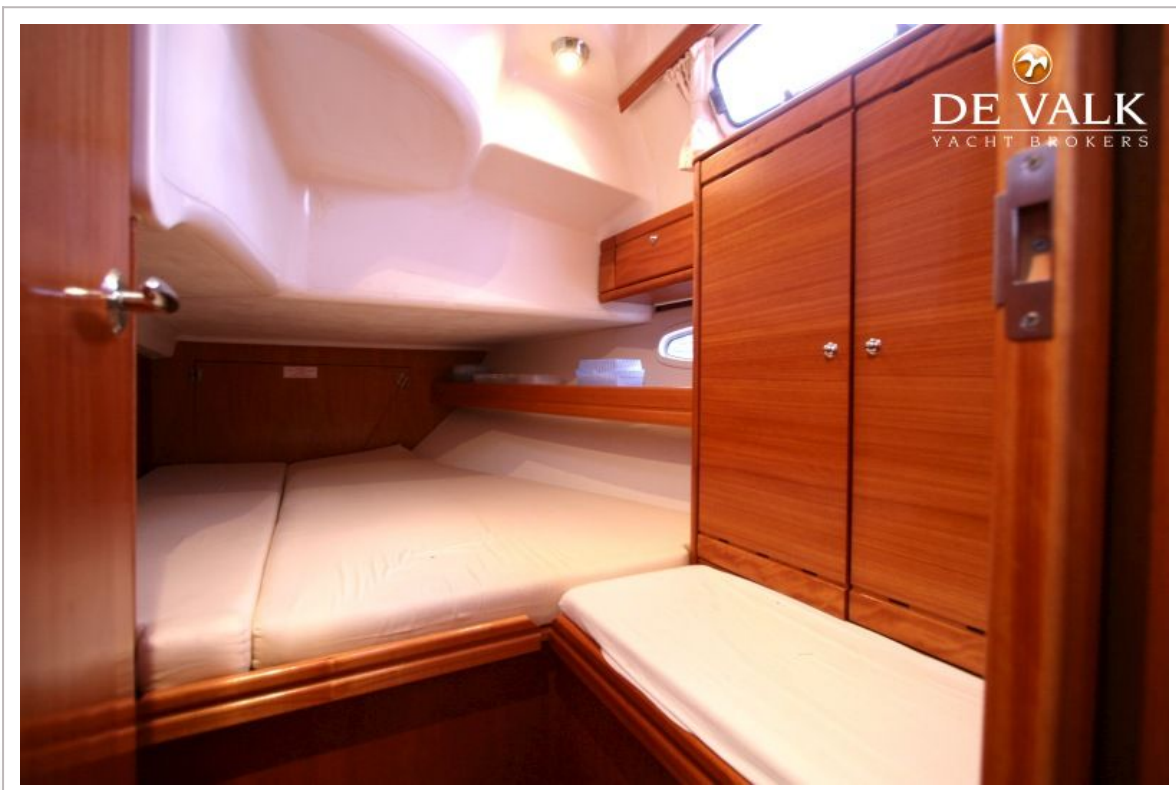
BAVARIA 39 CRUISER



BAVARIA 39 CRUISER



BAVARIA 39 CRUISER



BAVARIA 39 CRUISER

