



DE VALK
YACHT BROKERS



FEADSHIP KETCH



DE VALK
YACHT BROKERS

VAN DE MAKELAAR

Leonard Bonnema

SPECIFICATIES

Afmetingen	33.50 x 5.70 x 2.50 (m)	Bouwer	De Vries Aalsmeer
Bouwjaar	1939	Hutten	3
Materiaal	Staal	Slaapplaatsen	6
Motor(en)	1 x Caterpillar 3406 TA diesel	Pk/Kw	340.00 (pk), 250.24 (kw)
Vraagprijs	€ 2.750.000 (BTW Vrijgesteld)	Ligplaats	contact verkoopkantoor

CONTACT

Kantoor	Falcon Rydell	Telefoon	+31 (0)35 582 90 29
Adres	't Breukeleveense Meentje 6 1231LM Loosdrecht / Wijdmeren NL	E-mail	info@falconrydell.com

DISCLAIMER

Hoewel er uiterste zorg besteed is aan de correctheid, volledigheid en actualiteit van onze informatie kunnen hieraan geen rechten worden ontleend.



FEADSHIP KETCH

ALGEMEEN

Model	FEADSHIP KETCH
Type	motorzeiler
Lengte (m)	33,50
Lengte waterlijn (m)	25,00
Breedte (m)	5,70
Diepgang (m)	2,50
Bouwjaar	1939
Gebouwd door	De Vries Aalsmeer
Land	Nederland
Ontwerper	H.W. de Voogt
Waterverplaatsing (t)	81
Bruto tonnage	133
Romp materiaal	staal
Romp kleur	White
Rompvorm	Round bilged
Materiaal opbouw	Wood
Afwerking dek	Teak laid on two layers of plywood
Brandstoftank (liter)	5.000
Drinkwatertank (liter)	6.000
Vuilwatertank (liter)	Haman black and grey watersystems, 2.500 litres
Stuurwiel	Hydraulic
Buiten stuurstand	With great overview
Extra info romp	Complete refit 1999-2002

ACCOMMODATIE

Hutten	3
Slaapplaatsen	6
Interieur	kersen
Salon	Two spacious Saloons (1 lower deck; 1 deckhouse)
Eigenaarshut	With queen sized bed and en suite bathroom



FEADSHIP KETCH

Badkamer	en suite
Gastenhut 1	Double guest cabin with en suite bathroom
Badkamer	en suite
Gastenhut 2	Twin guest cabin with bathroom en suite
Badkamer	en suite
Bemanningshut(ten)	2 large cabins for 4 crew with spacious bathroom, galley/mess

MOTOR(EN)

Aantal motoren	1
Merk	Caterpillar
Type	3406 TA
Pk	340
kW	250.24
Brandstof	diesel
Gereviseerd in jaar	2001
Maximale snelheid (kn)	12
Kruissnelheid (kn)	9
Keerkoppeling	Twindisc
Boegschroef	Powerpack for winches, capstan and 50hp bowthruster
Elektrische lenspomp	ja
Elektrische installatie	Re-wired 2001 with new switch and distribution boards
Generator	2x 35kVA, 3-phase 380V, 50hz, Perkins

NAVIGATIE

Multi control display	B&G depth, speed, wind, wind angle; 3 positions
Marifoon	Sailor RT4822, SSB/DSC-Sailor HC 4500
Handmarifoon	4x Icom; 2x Icom 1500
Autopiloot	Litton MarineC PLATH
Radar	Furuno 1943 #2 displays with ARPA cards
GPS	JRC DGPS 200
Navtex	NCR 330



FEADSHIP KETCH

Epirb

Satelite EPIRB-Sailor 406 Mhz

UITRUSTING

Storm ramen

ja

Ankerlier

hydraulisch

Kaapstander

Hydraulic

Bijboot

opblaasbaar vaste bodem Avon 4 m.

Buitenboordmotor

50 hp

TV

ja

TV-ontvanger

SEATEL TV 1898E

Brandblusser

ja

Extra info

Safety equipment

Extra info

Fire fighting systems

TUIGAGE

Tuigage

kits Rigging by Harry Spencer of Cowes

Materiaal mast

hout 2x

Extra info

Complete set of sails by Ratsey & Lapthorne

Extra info

Deck fittings in bronze, Meissner hydraulic bronze winches



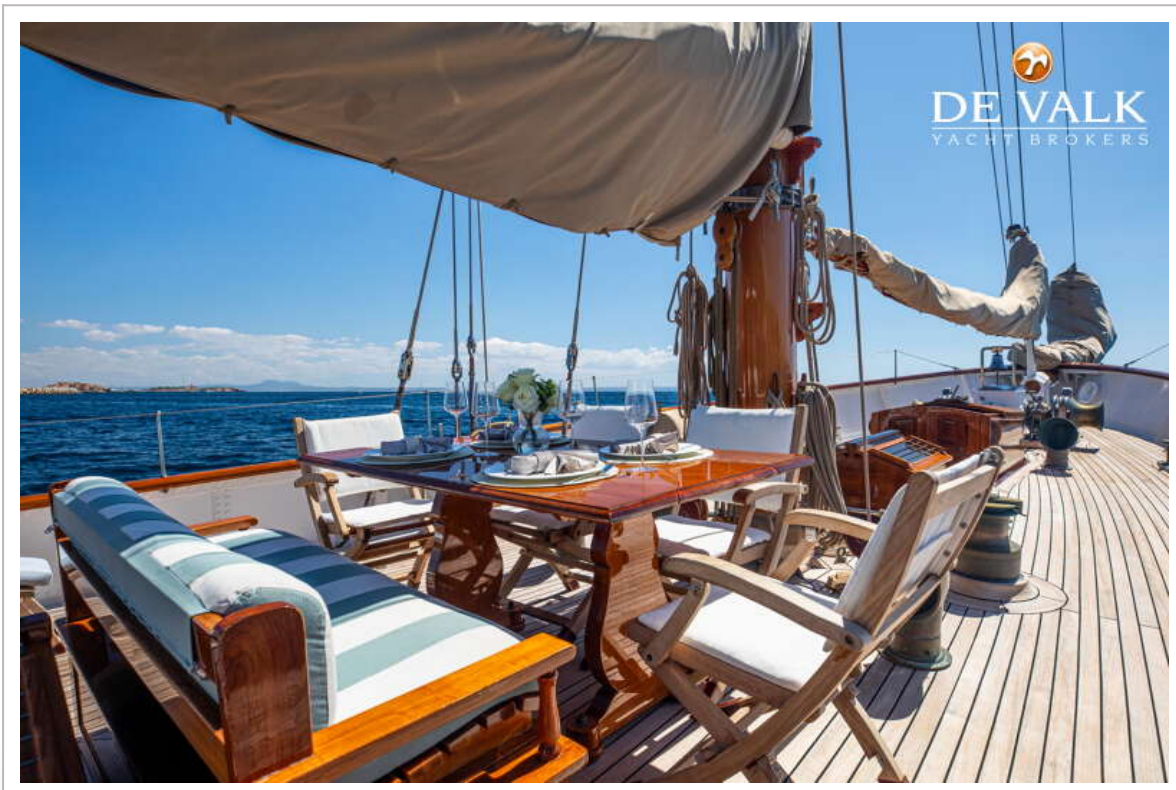
FEADSHIP KETCH



FEADSHIP KETCH



FEADSHIP KETCH



FEADSHIP KETCH



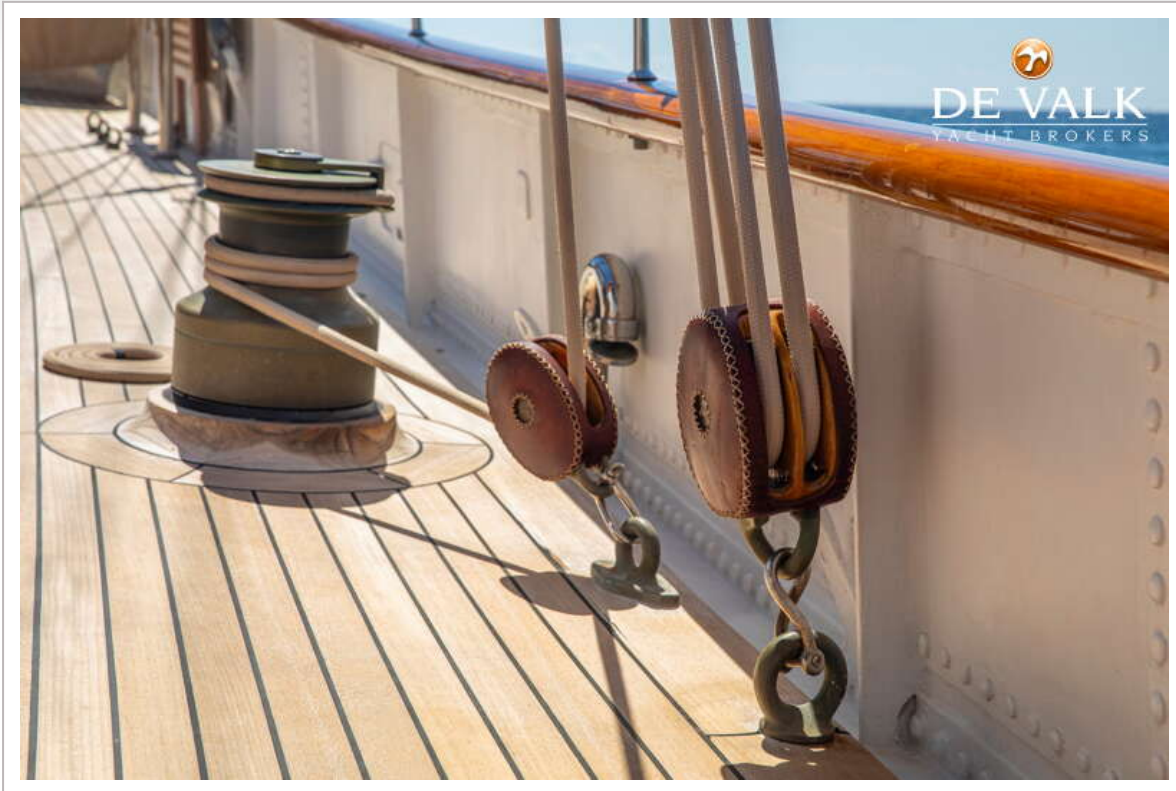
FEADSHIP KETCH



FEADSHIP KETCH



FEADSHIP KETCH



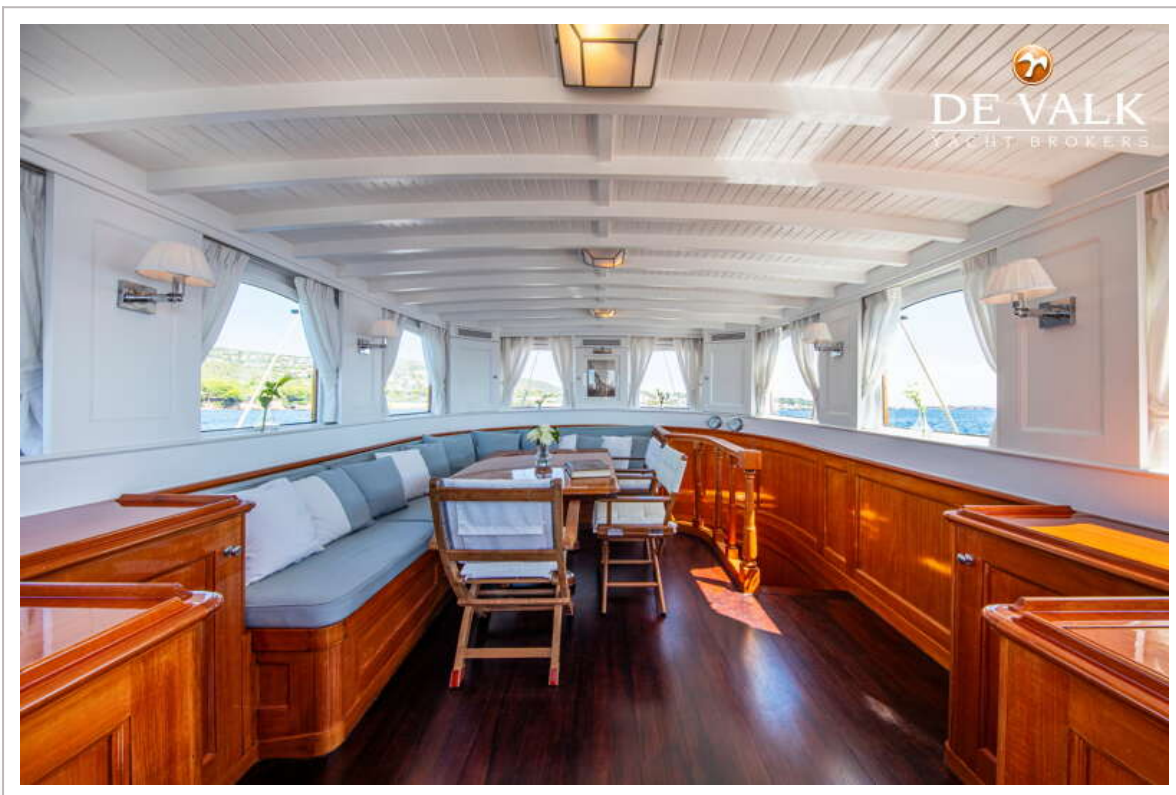
FEADSHIP KETCH



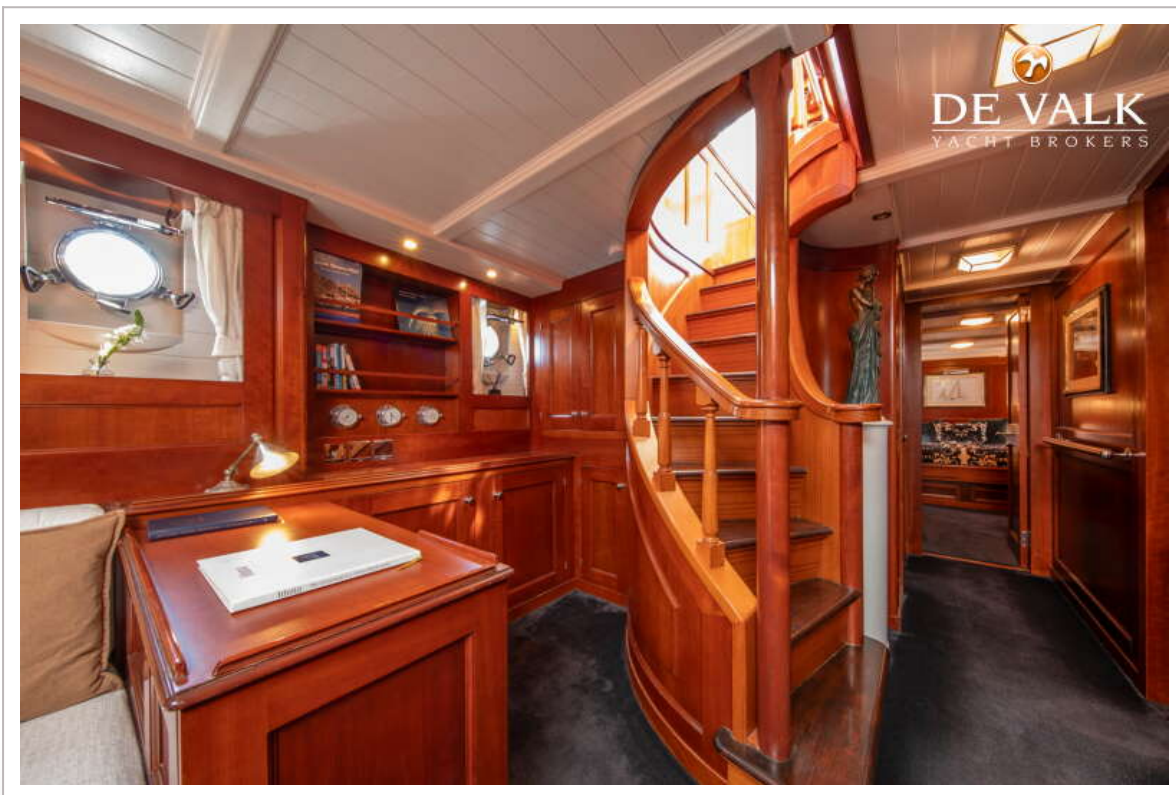
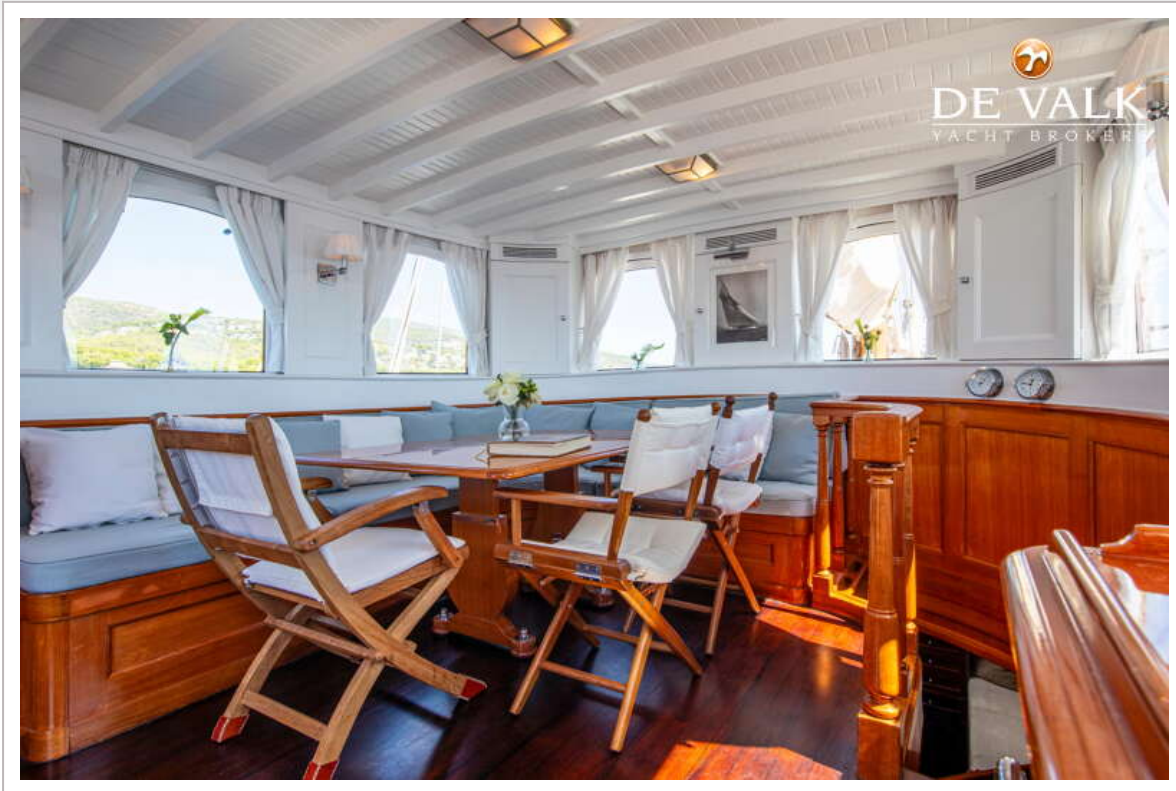
FEADSHIP KETCH



FEADSHIP KETCH



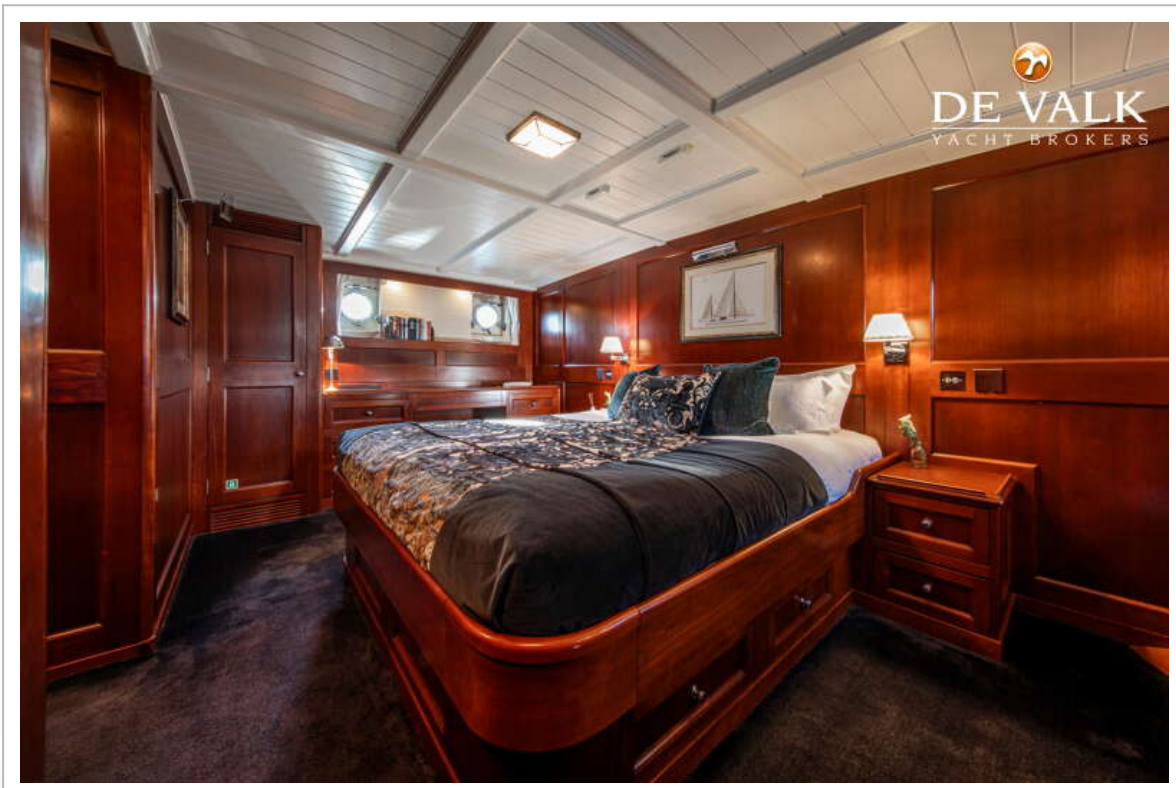
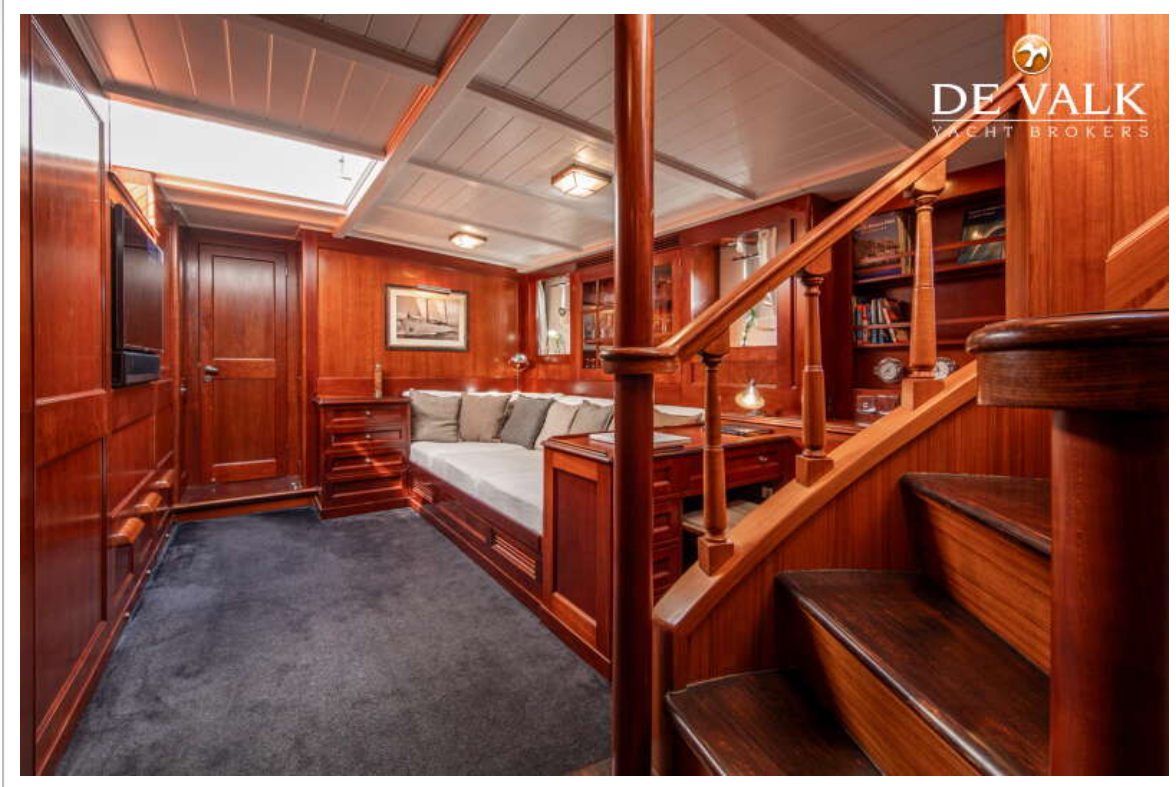
FEADSHIP KETCH



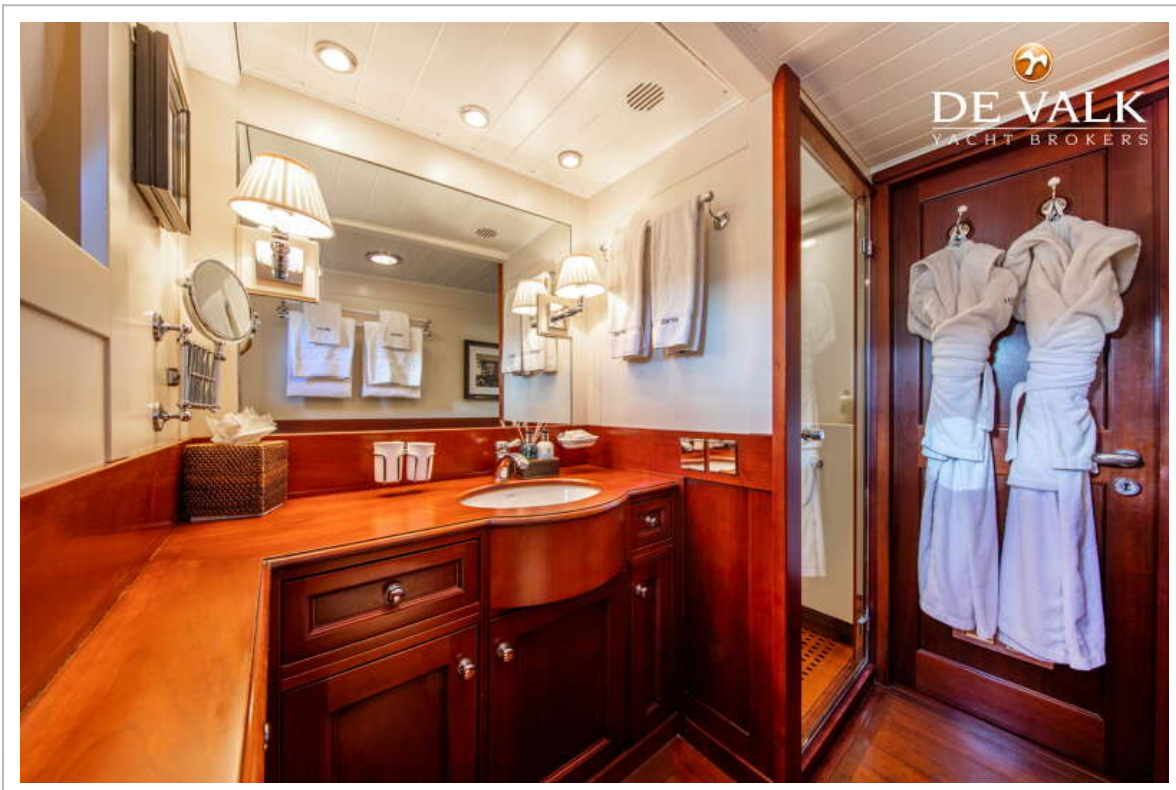
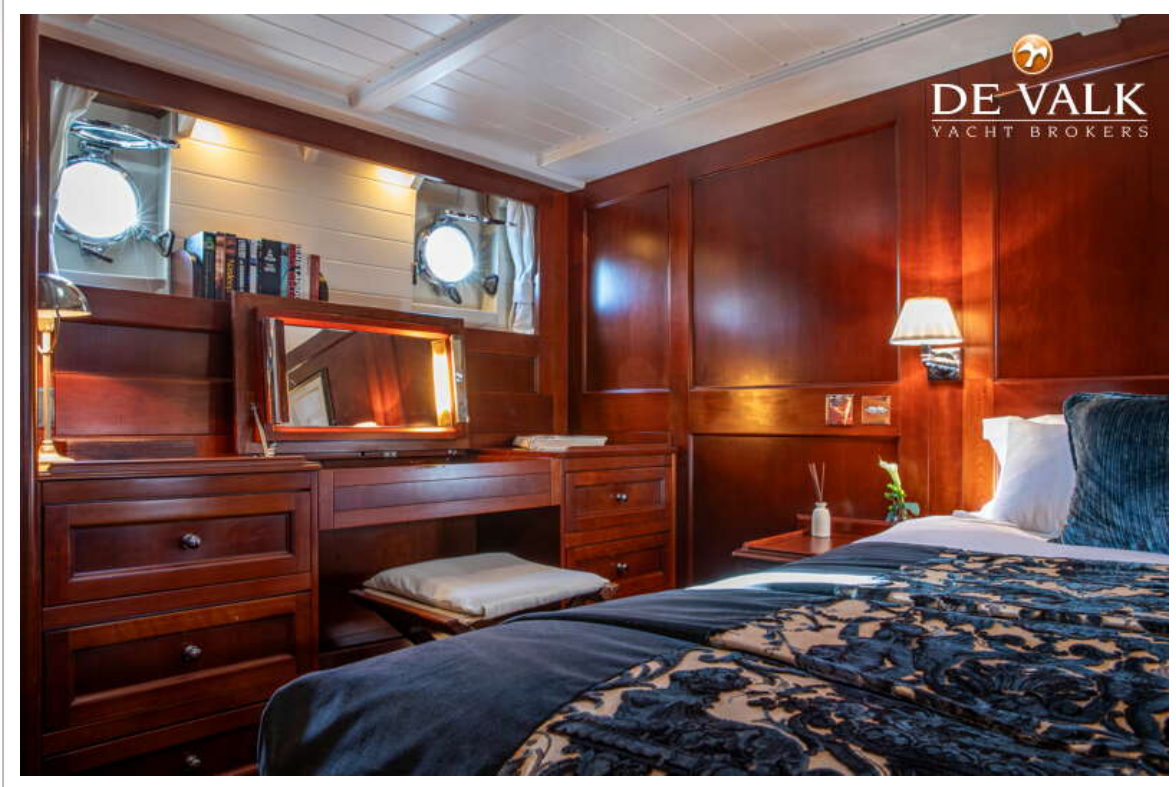
FEADSHIP KETCH



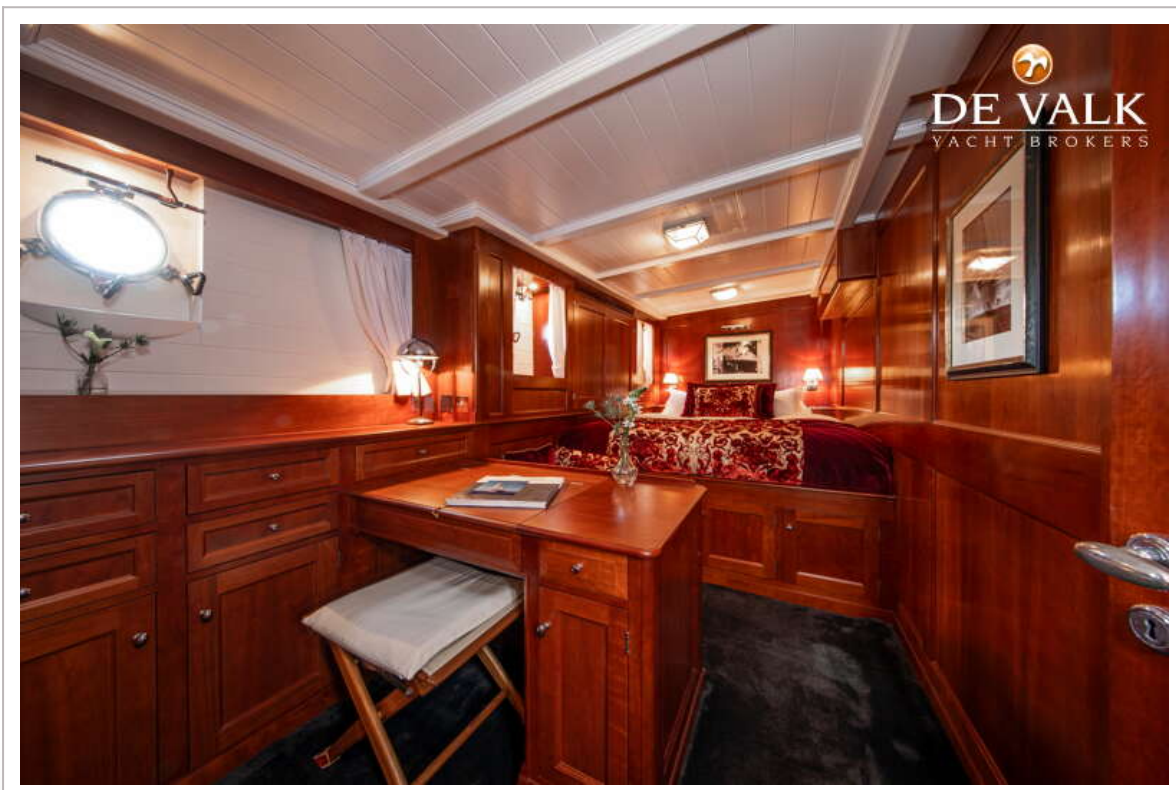
FEADSHIP KETCH



FEADSHIP KETCH



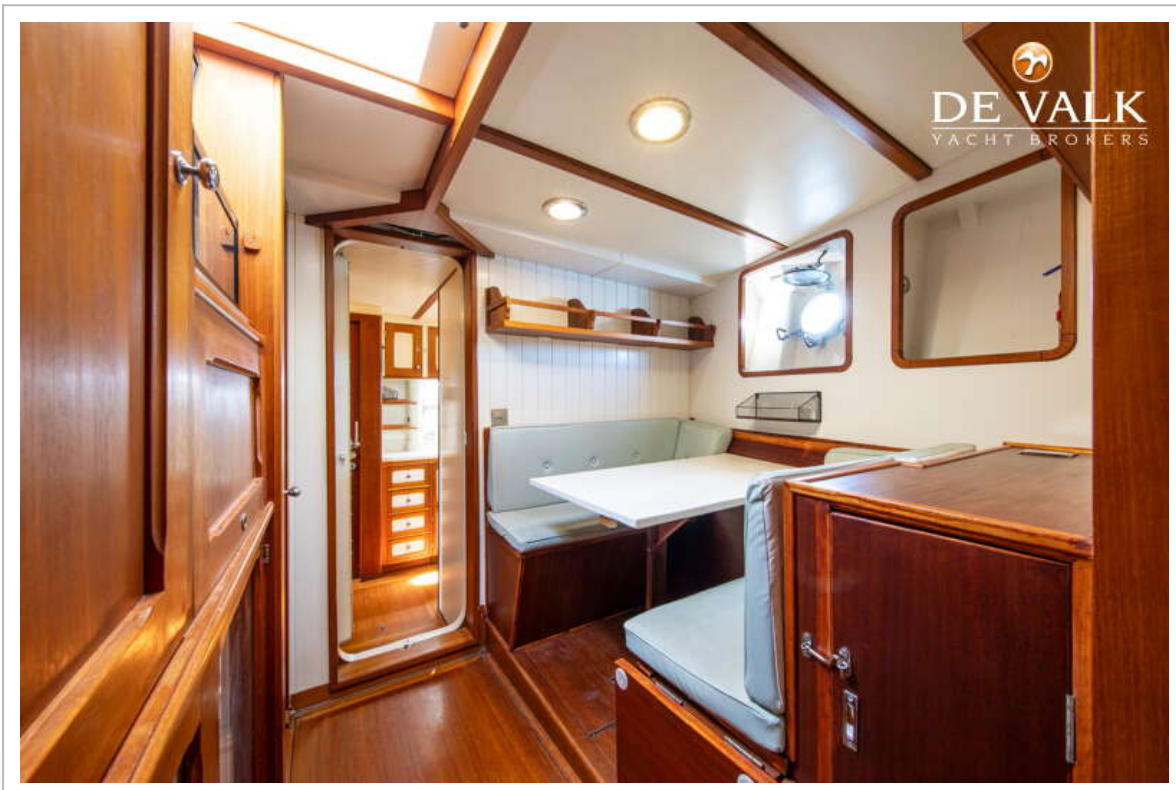
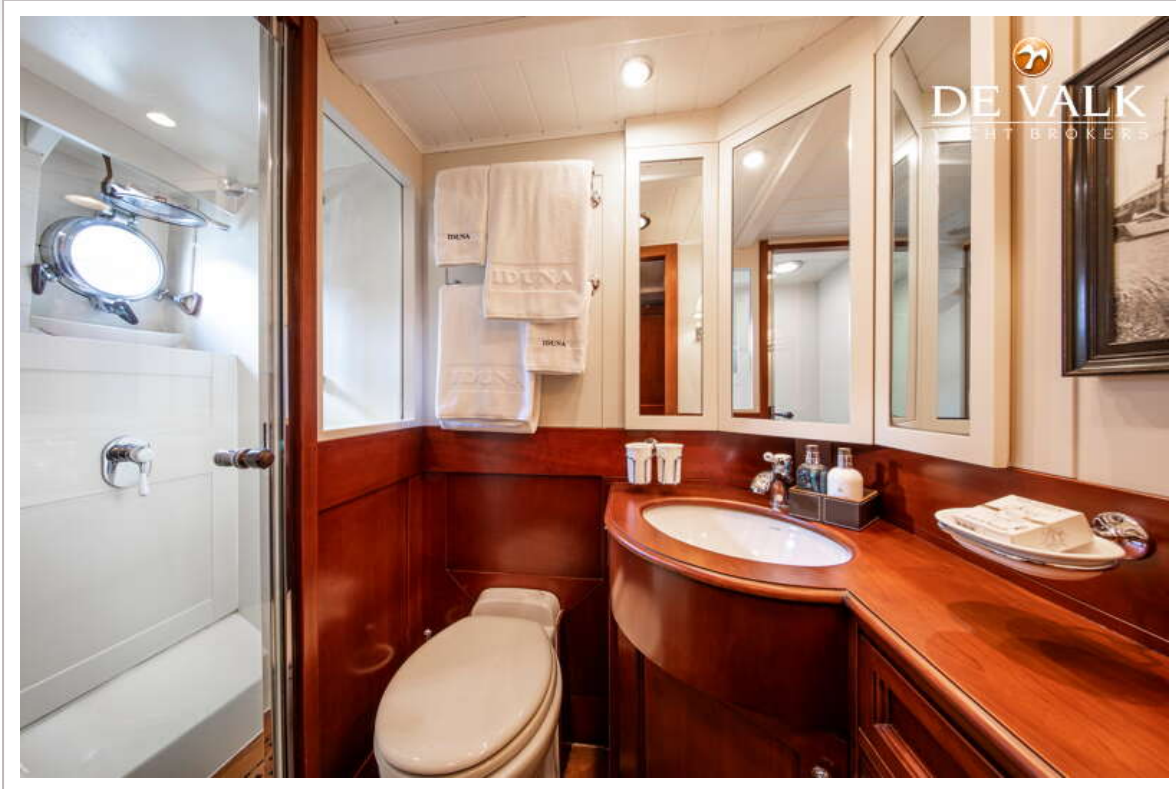
FEADSHIP KETCH



FEADSHIP KETCH



FEADSHIP KETCH



FEADSHIP KETCH



FEADSHIP KETCH



FEADSHIP KETCH

