



DE VALK  
YACHT BROKERS



MOODY 64



DE VALK  
YACHT BROKERS

## VAN DE MAKELAAR

The Moody 64 Spindrift is the flagship of the Moody fleet. The Moody spindrift has the dynamic capabilities necessary for the most serious blue water cruising owner. The Moody 64 spindrift has the accommodation for 8 including 1 crew. The Moody 64 pindrift has fully powered sail handling and has constantly been upgraded since new. The ugrades include sails, navigation equipment, new hull paint but also pumps and plumbing. If you are looking at a Moody 64, Spindrift is a must see.

*Hans Visser*

## SPECIFICATIES

|                   |                            |                      |                           |
|-------------------|----------------------------|----------------------|---------------------------|
| <b>Afmetingen</b> | 19.35 x 5.33 x 1.98 (m)    | <b>Bouwer</b>        | Princess Yachts/ Moody UK |
| <b>Bouwjaar</b>   | 2003                       | <b>Hutten</b>        | 4                         |
| <b>Materiaal</b>  | Polyester                  | <b>Slaapplaatsen</b> | 7                         |
| <b>Motor(en)</b>  | 1 x yanmar 4LHA-STP diesel | <b>Pk/Kw</b>         | 230.00 (pk), 169.05 (kw)  |
| <b>Vraagprijs</b> | verkocht (BTW )            | <b>Ligplaats</b>     | contact Amsterdam         |

## CONTACT

|                |  |                 |                     |
|----------------|--|-----------------|---------------------|
| <b>Kantoor</b> | De Valk Amsterdam B.V.                               | <b>Telefoon</b> | +31 (0)35 5829014   |
| <b>Adres</b>   | Marinaweg 8 (postal address)<br>1361 AC Almere<br>NL | <b>E-mail</b>   | amsterdam@devalk.nl |

## DISCLAIMER

Hoewel er uiterste zorg besteed is aan de correctheid, volledigheid en actualiteit van onze informatie kunnen hieraan geen rechten worden ontleend.



## ALGEMEEN

|                       |  |
|-----------------------|--|
| Model                 | MOODY 64   |
| Type                  | zeiljacht  |
| Lengte (m)            | 19,35  |
| Lengte waterlijn (m)  | 16,55  |
| Breedte (m)           | 5,33   |
| Diepgang (m)          | 1,98   |
| Doorvaarhoogte (m)    | 27,00  |
| Stahoogte (m)         | 2,04   |
| Bouwjaar              | 2003   |
| Te waterlating        | Launched July 2004 after customisation @ Moodys itself |
| Gebouwd door          | Princess Yachts/ Moody UK                              |
| Land                  | Engeland   |
| Ontwerper             | Bill Dixon   |
| Waterverplaatsing (t) | 31,5   |
| Ballast (ton)         | 10   |
| Bruto tonnage         | 28,7   |
| CE norm               | A  |
| Romp materiaal        | polyester  |
| Romp kleur            | blauw Repainted in 2017                                |
| Rompvorm              | rondspant  |
| Kiel type             | kiel met bulb  |
| Materiaal opbouw      | polyester  |
| Stootlijst            | Teak   |
| Dek materiaal         | polyester  |
| Afwerking dek         | teak   |
| Afwerking opbouw      | anti-slip profiel                                      |
| Afwerking kuip        | teak   |
| Antifouling (jaar)    | Annually, spring 2019 for the last time                |
| Dorades               | 8 x stainless steel                                    |
| Raamlijsten           | Stainless steel  |



|                              |                         |
|------------------------------|-------------------------|
| Raammateriaal                | hardglas                |
| Dekluik                      | ja                      |
| Patrijspoorten               | aluminium               |
| Brandstoftank (liter)        | roestvast staal 3000 l. |
| Inhoudsmeter (brandstoftank) | ja                      |
| Drinkwatertank (liter)       | roestvast staal 600 l.  |
| Vuilwatertank (liter)        | 250                     |
| Vuilwatertank afvoer         | dekafzuigpunt + ow lijn |
| Stuurwiel                    | Double Rod steering     |
| Noodhelmstok                 | ja                      |

## ACCOMMODATIE

|                         |  |
|-------------------------|--|
| Hutten                  | 4  |
| Slaapplaatsen           | 7  |
| Bemanningshut           | 1  |
| Bemanning slaapplaatsen | 1  |
| Interieur               | teak Classic   |
| Indeling                | Owner with crew  |
| Vloer                   | teak   |
| Open kuip               | ja   |
| Achterdek               | ja   |
| Salon                   | Leather upholstery replaced 2015                             |
| Stahoogte salon (m)     | 2,0  |
| Verwarming              | centrale verwarming Eberspacher DW10 including 3 towel rails |
| Airco                   | airco omkeerbaar Cruise air                                  |
| Navigatie ruimte        | ja   |
| Kaartentafel            | ja   |
| Achterkajuit            | ja   |
| Dinette                 | ja   |
| Schuifdeur naar kuip    | ja   |
| Keuken                  | U shaped   |



|                   |  |
|-------------------|--|
| Aanrechtblad      | corian   |
| Spoelbak          | roestvast staal Double   |
| Kooktoestel       | elektrisch Force ten with ceramic hub and integrated oven (2016) |
| Oven              | ja   |
| Magnetron         | ja   |
| Koelkast          | ja   |
| Vriezer           | ja   |
| Wijnkoeler        | ja   |
| Warmwatersysteem  | 220V + motor   |
| Waterdruksysteem  | ja   |
| Vaatwasser        | Bosch SKT5002 4 plate setting                                    |
| Ijsblokjesmachine | Raritan  |
| Kommaliewant      | ja   |
| Eigenaarshut      | frans bed  |
| Lengte bed (m)    | 2.00 x 1.70  |
| Kledingkast       | hangend/lades/legplanken   |
| Badkamer          | en suite   |
| Toilet            | en suite   |
| Toilet Systeem    | vacuum   |
| Wasbak            | in de badkamer   |
| Douche            | en suite   |
| Extra info        | Fitted carpets replaced 2018                                     |
| Gastenhut 1       | tweepersoonsbed VIP cabin  |
| Lengte bed (m)    | 2.00 x 1.40  |
| Kledingkast       | hangend/lades/legplanken   |
| Badkamer          | en suite   |
| Toilet            | en suite   |
| Toilet systeem    | vacuum   |
| Wasbak            | in de badkamer   |
| Douche            | en suite   |
| Gastenhut 2       | stapelbed  |



|                             |                                      |
|-----------------------------|--------------------------------------|
| <b>Lengte bed (m)</b>       | 2.00                                 |
| <b>Kleerkast</b>            | hangend/lades/legplanken With mirror |
| <b>Badkamer</b>             | gedeeld                              |
| <b>Toilet</b>               | gedeeld                              |
| <b>Toilet systeem</b>       | vacuum                               |
| <b>Wasbak</b>               | in de badkamer                       |
| <b>Douche</b>               | gedeeld                              |
| <b>Gastenhut 3</b>          | stapelbed Passage cabin              |
| <b>Lengte bed (m)</b>       | 2.00                                 |
| <b>Kleerkast</b>            | legplanken                           |
| <b>Bemanningshut(ten)</b>   | 1                                    |
| <b>Badkamer (bemanning)</b> | ja                                   |
| <b>Toilet (bemanning)</b>   | ja                                   |
| <b>Toilet systeem</b>       | vacuum                               |
| <b>Wasbak</b>               | bij het toilet                       |
| <b>Was/droog combinatie</b> | Miele full size                      |

## MOTOR(EN)

|                               |                |
|-------------------------------|----------------|
| <b>Aantal motoren</b>         | 1              |
| <b>Merk</b>                   | Yanmar         |
| <b>Type</b>                   | 4LHA-STP       |
| <b>Pk</b>                     | 230,00         |
| <b>kW</b>                     | 169,05         |
| <b>Brandstof</b>              | diesel         |
| <b>Geïnstalleerd in jaar</b>  | 2003           |
| <b>Gereviseerd in jaar</b>    | 2011           |
| <b>Maximale snelheid (kn)</b> | 9,9 @ 2700 rpm |
| <b>Kruissnelheid (kn)</b>     | 8,5 @ 2000 rpm |
| <b>Motoruren</b>              | 6245           |
| <b>Aandrijving</b>            | schroefas      |
| <b>Schroefas afdichting</b>   | ja             |



|                                |   |
|--------------------------------|---|
| <b>Motorbediening</b>          | elektrisch  |
| <b>Keerkoppeling</b>           | hydraulisch   |
| <b>Boegschroef</b>             | hydraulisch Side Power 15 Hp.                                   |
| <b>Uitlaatsysteem</b>          | watergekoeld  |
| <b>Type schroef</b>            | klap Brutons Varifold (2018)                                    |
| <b>Schroefbladen</b>           | 4   |
| <b>Materiaal schroefas</b>     | roestvast staal   |
| <b>Smerring schroefas</b>      | water   |
| <b>Handlenspomp</b>            | ja  |
| <b>Elektrische lenspomp</b>    | ja  |
| <b>Bilge alarm</b>             | ja  |
| <b>Elektrische installatie</b> | 12 & 24 V. DC & 240 V AC  |
| <b>Generator</b>               | natte uitlaat Fischer Panda 12 kW 240 V AC new 2011             |
| <b>Draaiuren generator</b>     | 1755  |
| <b>Generator 2</b>             | Fischer Panda 6 KW 24 V DC new 2013                             |
| <b>Draaiuren generator 2</b>   | 1945  |
| <b>Accu's</b>                  | Sonnenschein Exide Gel batteries July 2012                      |
| <b>Startaccu</b>               | New 2018  |
| <b>Lichtaccu</b>               | New 2018  |
| <b>Generatoraccu</b>           | New 2018  |
| <b>Accu monitor</b>            | BMV 501 as part of Victron intelligent power system             |
| <b>Acculader/omvormer</b>      | Victron Quattro 24/8000 2011,integrated power management system |
| <b>Diodebrug</b>               | ja  |
| <b>Walstroom</b>               | met kabel   |
| <b>Watermaker</b>              | Spectra Newport 1000  |

## NAVIGATIE

|                    |               |
|--------------------|---------------|
| <b>Kompas</b>      | 2 x Whitlock  |
| <b>Dieptemeter</b> | Raymarine I70 |
| <b>Log</b>         | Raymarine I70 |



|                            |   |
|----------------------------|---|
| <b>Windmeetset</b>         | Raymarine I70   |
| <b>Repeaters</b>           | 4 x Raymarine I70 MFD at helm & companionway & 290 at chart table |
| <b>Marifoon</b>            | Raymarine with 3 stations (Cockpit, Helm & Companion way)         |
| <b>Autopiloot</b>          | Raymarine R70 Autopilot with 3 controls, helm, companionway, nav  |
| <b>Roerstand aanwijzer</b> | ja  |
| <b>Radar</b>               | Raymarine   |
| <b>GPS</b>                 | 2 x furuno GP32 Waas with switchover switch                       |
| <b>Radar/GPS/plotter</b>   | Raymarine C series 12" & A series 9"                              |
| <b>Weer ontvanger</b>      | Meteoman (obsolete)   |
| <b>PC computer</b>         | With Samsung flatscreen   |
| <b>PC aansluiting</b>      | Sony Viao VGX media centre  |
| <b>Wifi antenne</b>        | Yachtspot 4G/WiFi receiver with external antenna                  |
| <b>AIS transponder</b>     | ja  |
| <b>Radio ontvanger</b>     | Thrane and Thrane Fleet Broadband System                          |
| <b>Zendinstallatie</b>     | Icom IC 802 SSB radio   |
| <b>Epirb</b>               | ja  |
| <b>Extra info</b>          | Iridium Sat phone system  |

## UITRUSTING

|                                 |  |
|---------------------------------|--|
| <b>Vaste ramen</b>              | ja   |
| <b>Buiskap met grijp-beugel</b> | Blue   |
| <b>Bimini</b>                   | Blue   |
| <b>Kuipkussens</b>              | ja   |
| <b>Kuiptafel</b>                | ja   |
| <b>Zwemplatform</b>             | Electric hydraulic remote controled          |
| <b>Zwemtrap</b>                 | roestvast staal also used to fit to platform |
| <b>Deur in spiegel</b>          | ja   |
| <b>Loopplank</b>                | Carbon electric hydraulic                    |
| <b>Anker</b>                    | ja   |
| <b>Ankerketting</b>             | 100 meter Stainless steel                    |



|                            |   |
|----------------------------|---|
| Anker 2                    | Spare Danforth folding in Lazarette       |
| Ketting teller             | Quick                                     |
| Ankerlier                  | elektrisch Lewmar 3000                    |
| Bijboot                    | vaste romp Ribeye 3.65 meter              |
| Buitenboordmotor           | Yamaha 15 hp                              |
| Davits                     | White painted kevlar                      |
| Davits bediening           | elektrisch                                |
| Handgreep (opbouw)         | ja  |
| Zij-instap in reling       | ja  |
| Hekstoel                   | ja  |
| Preekstoel                 | ja  |
| Reddingsvlot               | container RDF solas (A'Pack) new 2016     |
| Reddingsvlot (pers)        | 8   |
| Zwemvesten                 | 7 plus emergency grab bag                 |
| Reddingsboei               | ja  |
| Joon                       | ja  |
| Hoorn                      | elektrisch                                |
| Stootkussens               | ja  |
| Landvasten                 | ja  |
| Reserve onderdelen         | ja  |
| Gereedschap                | ja  |
| Alarm systeem              | For bilges                                |
| TV                         | 3 x                                       |
| TracVision ball            | KVH Track vision G6                       |
| Radio-cd speler            | ja  |
| Surround Sound System      | Bose sound systems both below and on deck |
| Kuipspeakers               | ja  |
| Speakers in salon          | ja  |
| Speakers in hut            | ja  |
| Klok - barometer           | ja  |
| Brandblusser               | ja  |
| Brandblusser in motorkamer | ja  |



Automatisch brandblussysteem ja

## TUIGAGE

|                                |  |
|--------------------------------|--|
| <b>Tuigage</b>                 | sloep-kotter White, repainted 2018 incl boom                   |
| <b>Staad want</b>              | Rod  |
| <b>Merk mast</b>               | Seldén   |
| <b>Materiaal mast</b>          | aluminium  |
| <b>Zalingen</b>                | 3 sets swept aft plus diamond jumper strut                     |
| <b>Doorgestoken mast</b>       | ja   |
| <b>Grootzeil</b>               | Doyle Stratis 2015   |
| <b>Rolgrootzeil</b>            | Selden hydraulic   |
| <b>Genua</b>                   | Furling Doyle Stratis 2015                                     |
| <b>Genua rolreefsysteem</b>    | Selden hydraulic   |
| <b>Kotter rolreefsysteem</b>   | Selden hydraulic   |
| <b>Spinnaker</b>               | Parasail wiyh small bow sprit                                  |
| <b>A-symmetrische spi</b>      | Doyle 2011   |
| <b>Stagzeil</b>                | Doyle Stratis 2015   |
| <b>Achterstagspanner</b>       | hydraulisch Navtec   |
| <b>Giekneerhouder</b>          | hydraulisch Navtec   |
| <b>Primaire schootlieren</b>   | 1 x Lewmar 58 CEST mainsheet & control line                    |
| <b>Secondaire schootlieren</b> | 2 x Lewmar 58 CST  |
| <b>Genua schootlieren</b>      | 2 x Lewmar 66 CEST electric                                    |
| <b>Vallieren</b>               | Lewmar on control line   |
| <b>Spinnaker lieren</b>        | Lewmar on control line   |
| <b>Reeflier</b>                | Lewmar 58 CST on the mast                                      |
| <b>Multifunctionele lieren</b> | 2 x Lewmar 30 CST traveller                                    |
| <b>Spinnakerboom</b>           | carbon   |
| <b>Geïsoleerde achterstag</b>  | ja   |
| <b>Extra info</b>              | I 24 M, J 7,5 M, P 21,5 M,E 7,15 M.                            |
| <b>Extra info</b>              | Standing rigging fully inspected januari 2018 report available |



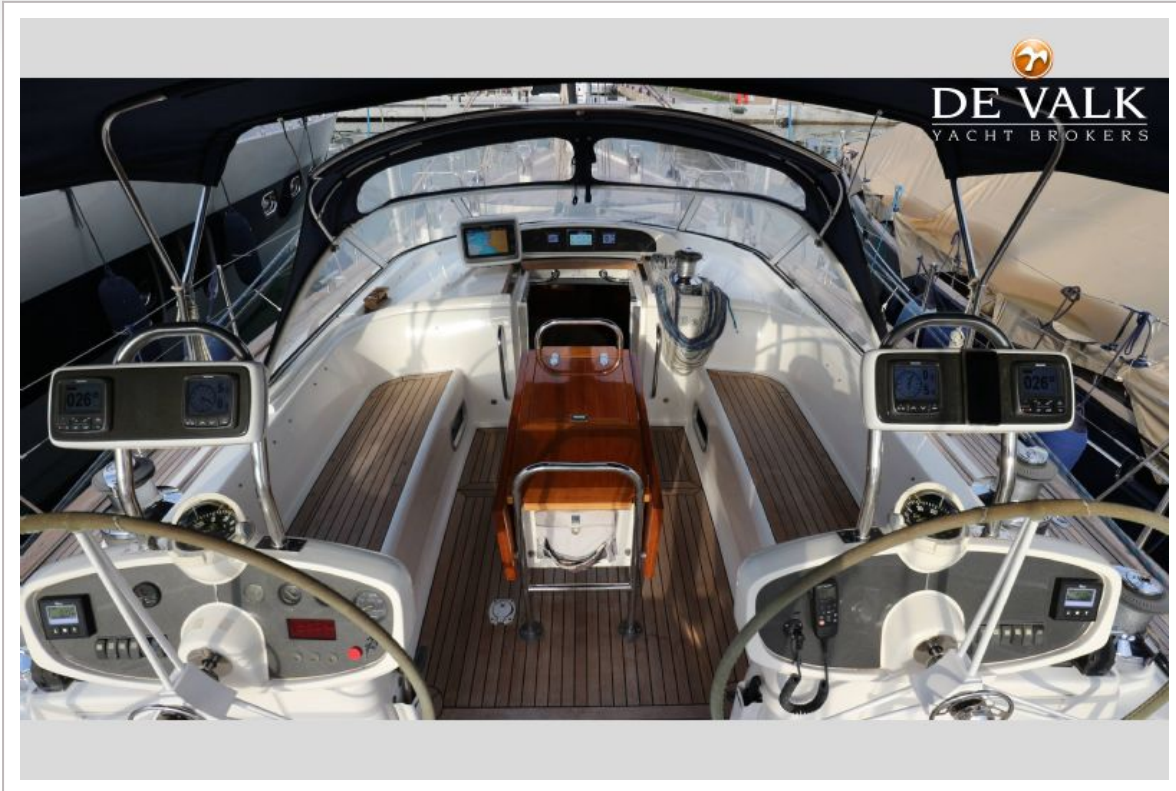
# MOODY 64



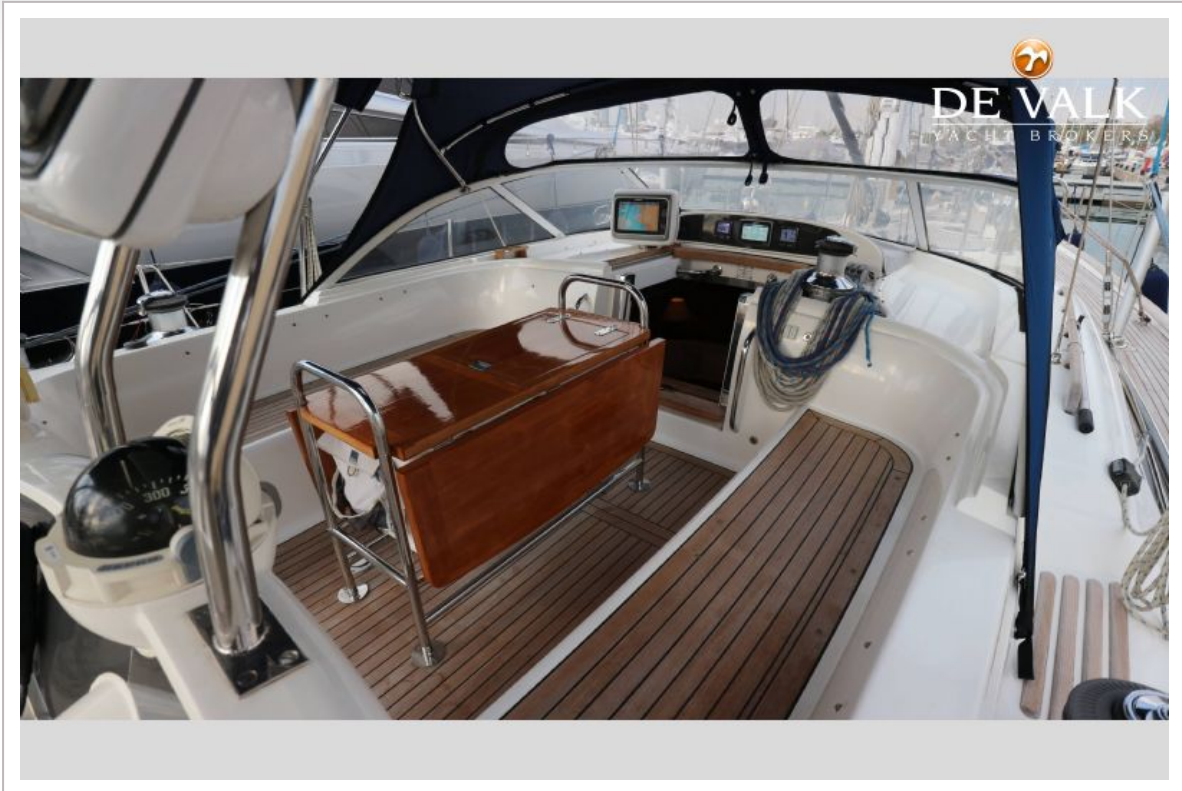
# MOODY 64



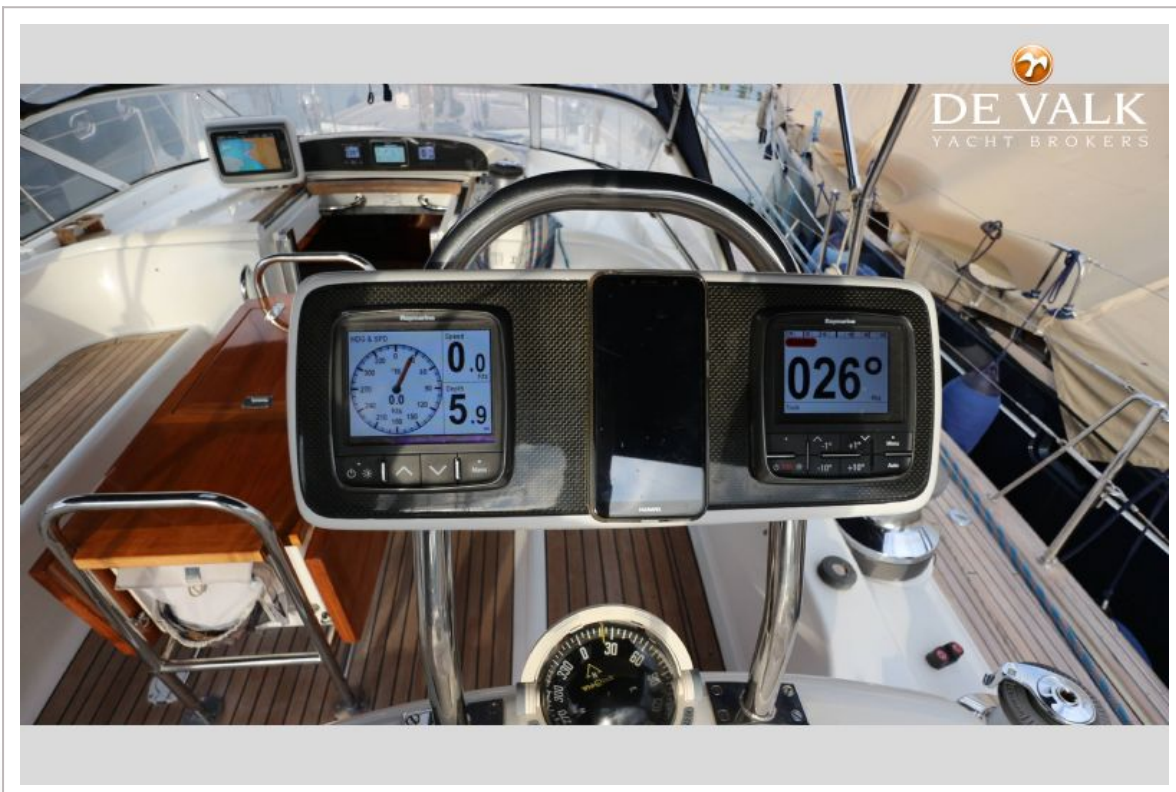
# MOODY 64



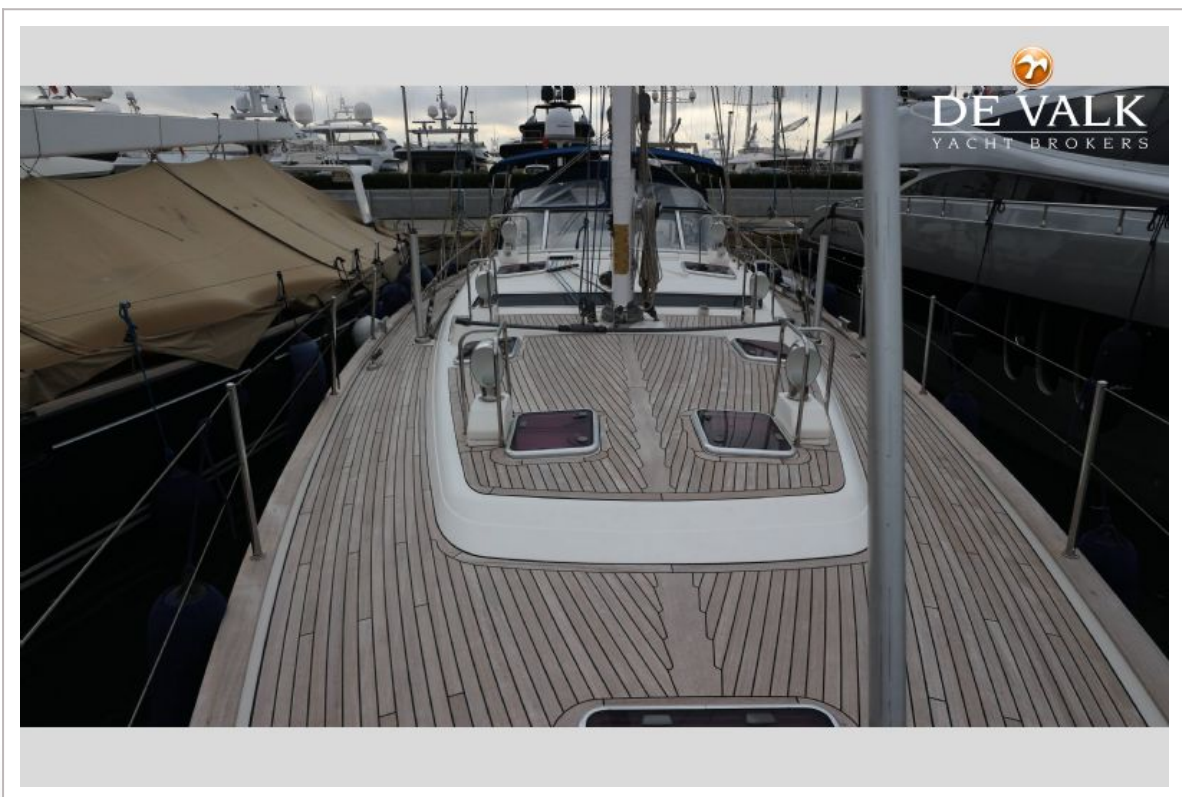
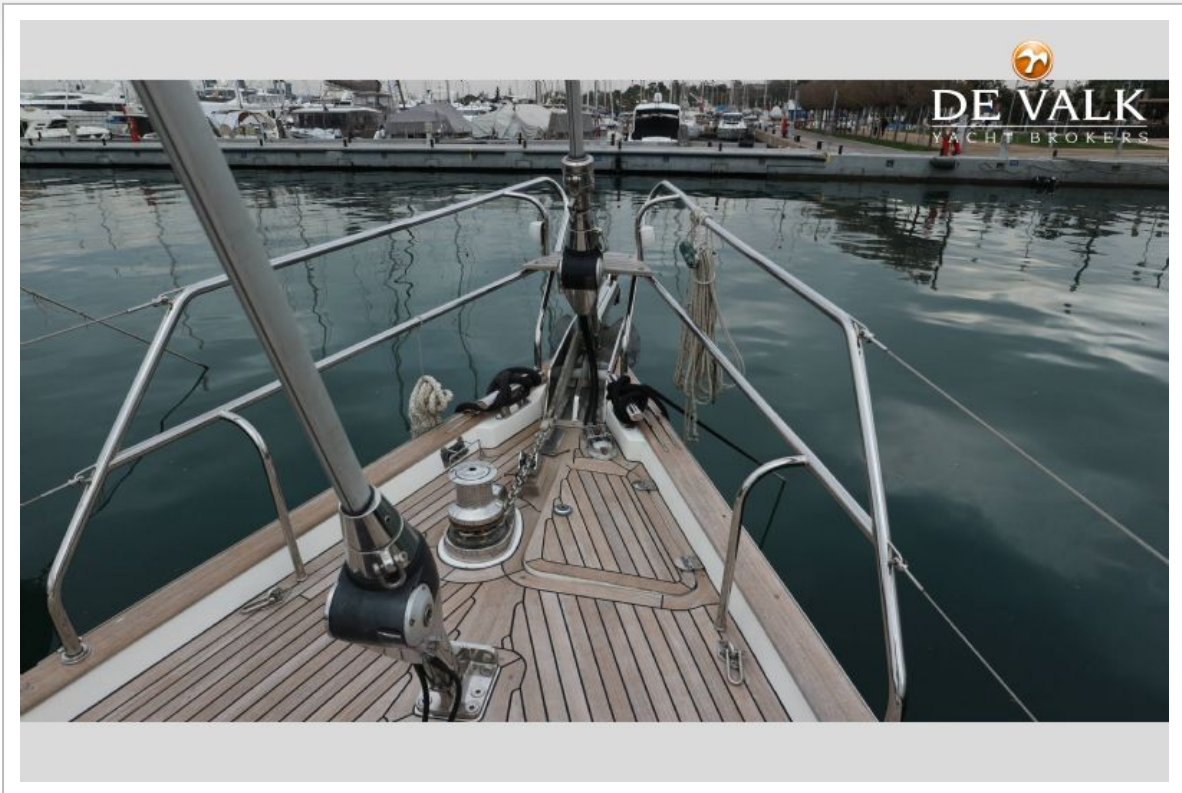
# MOODY 64



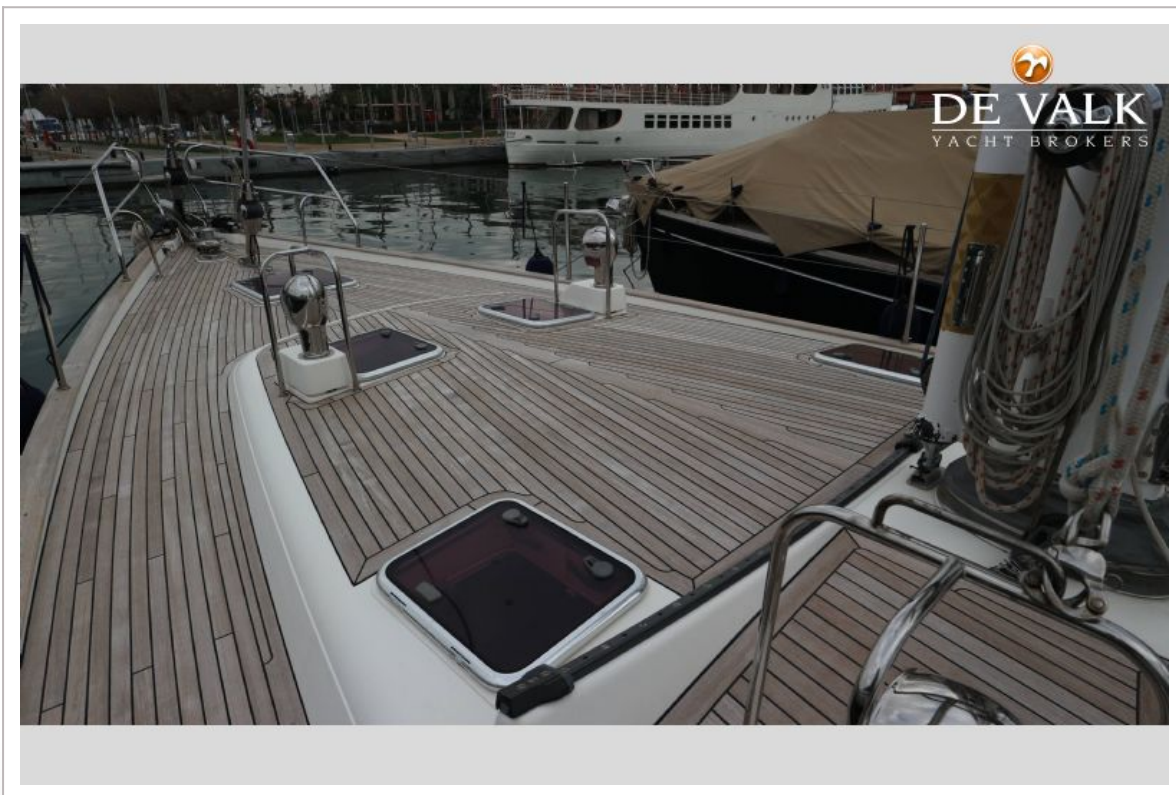
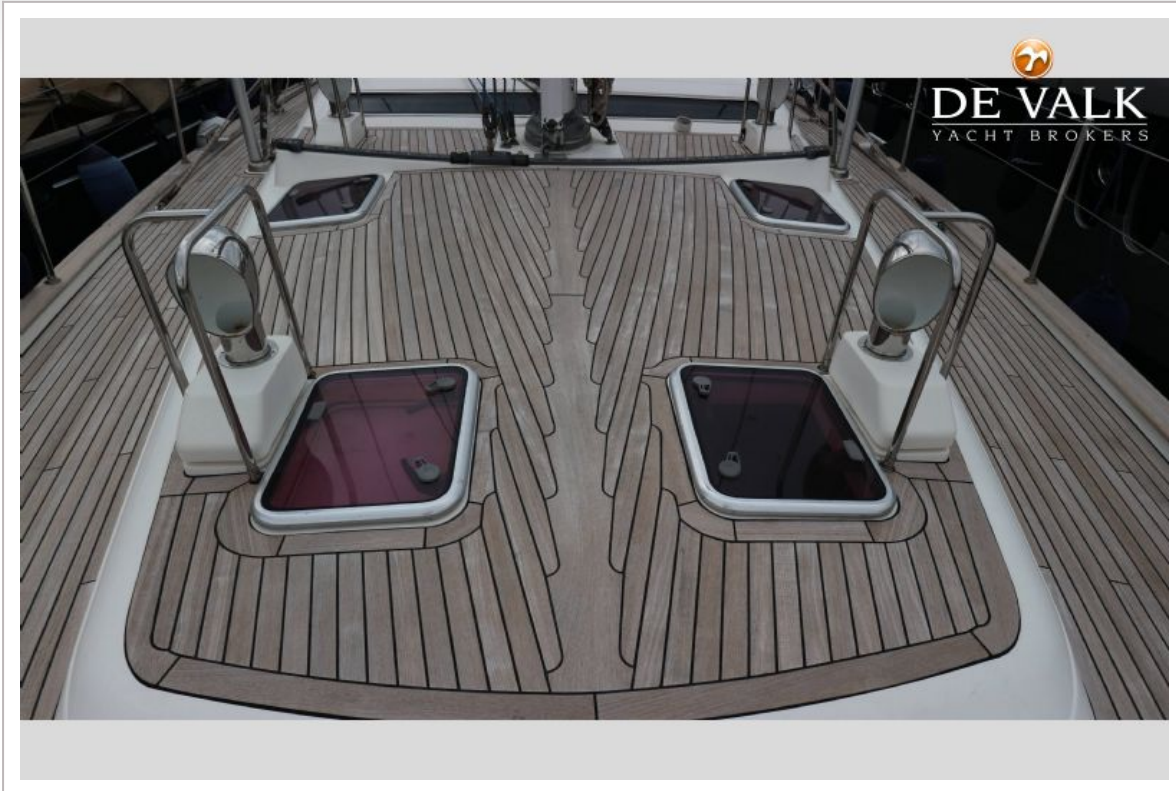
# MOODY 64



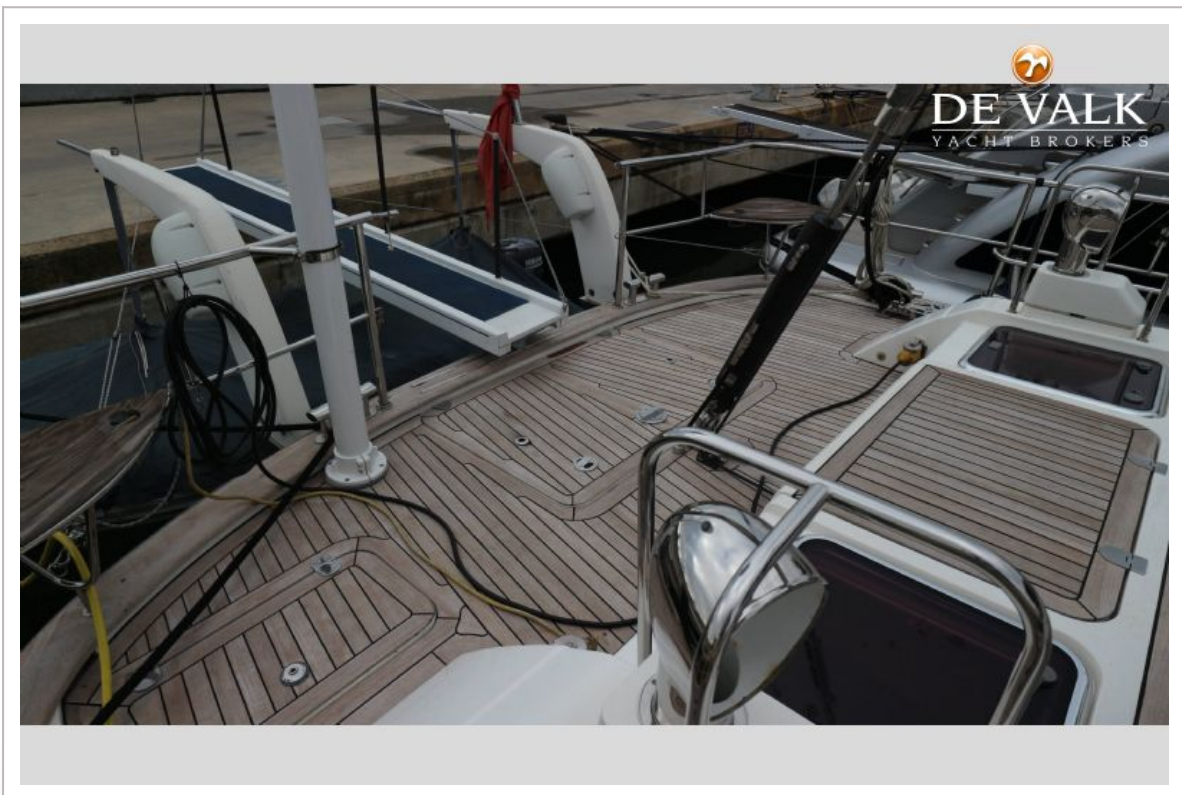
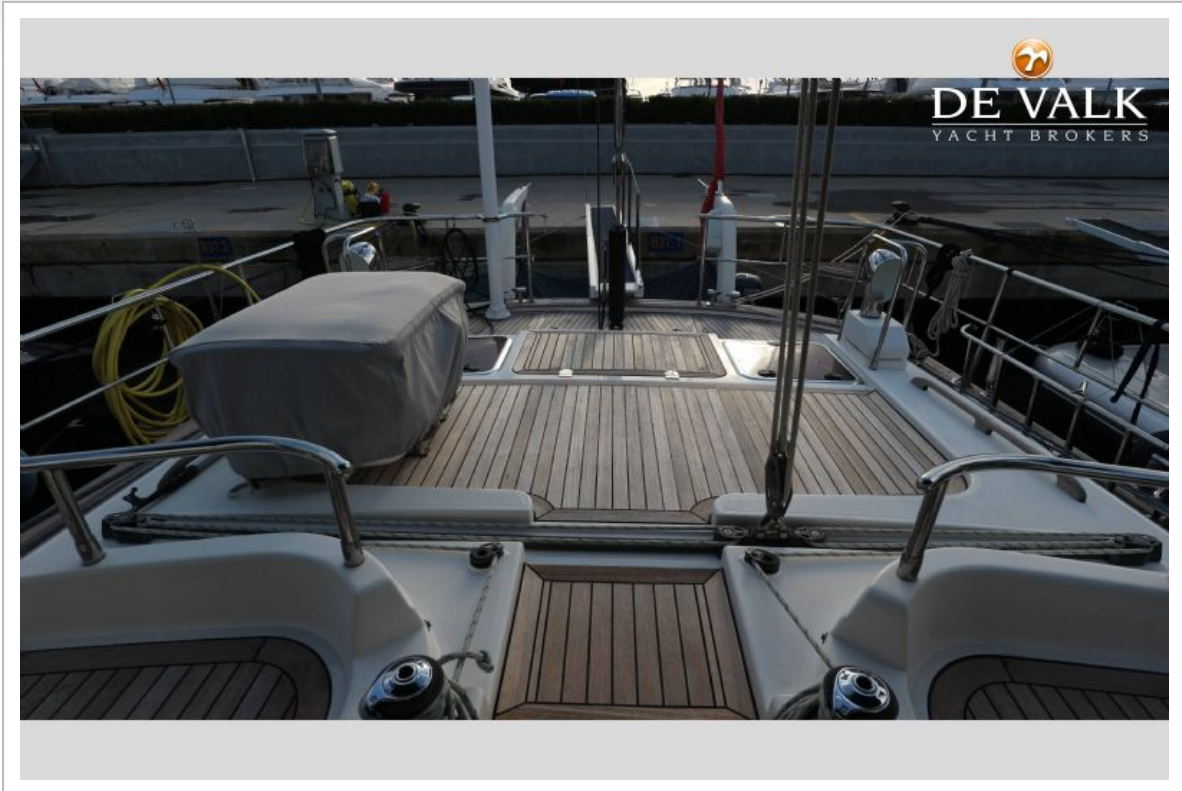
# MOODY 64



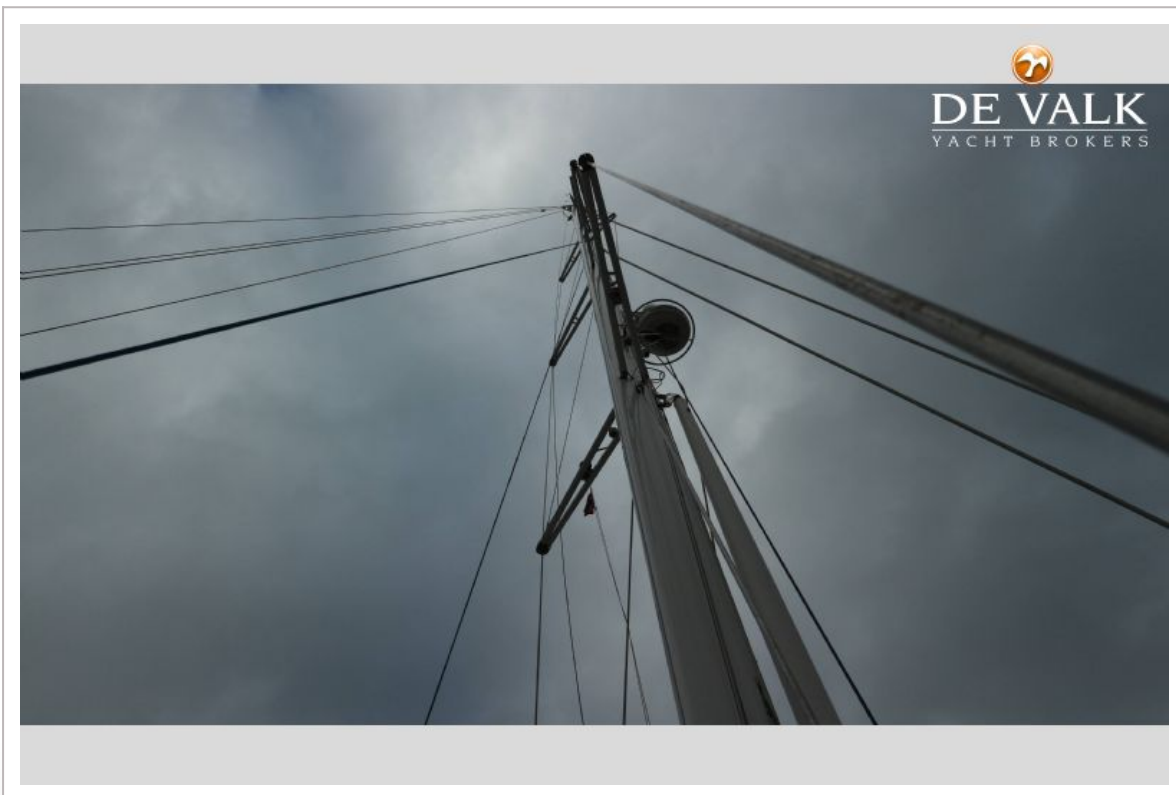
# MOODY 64



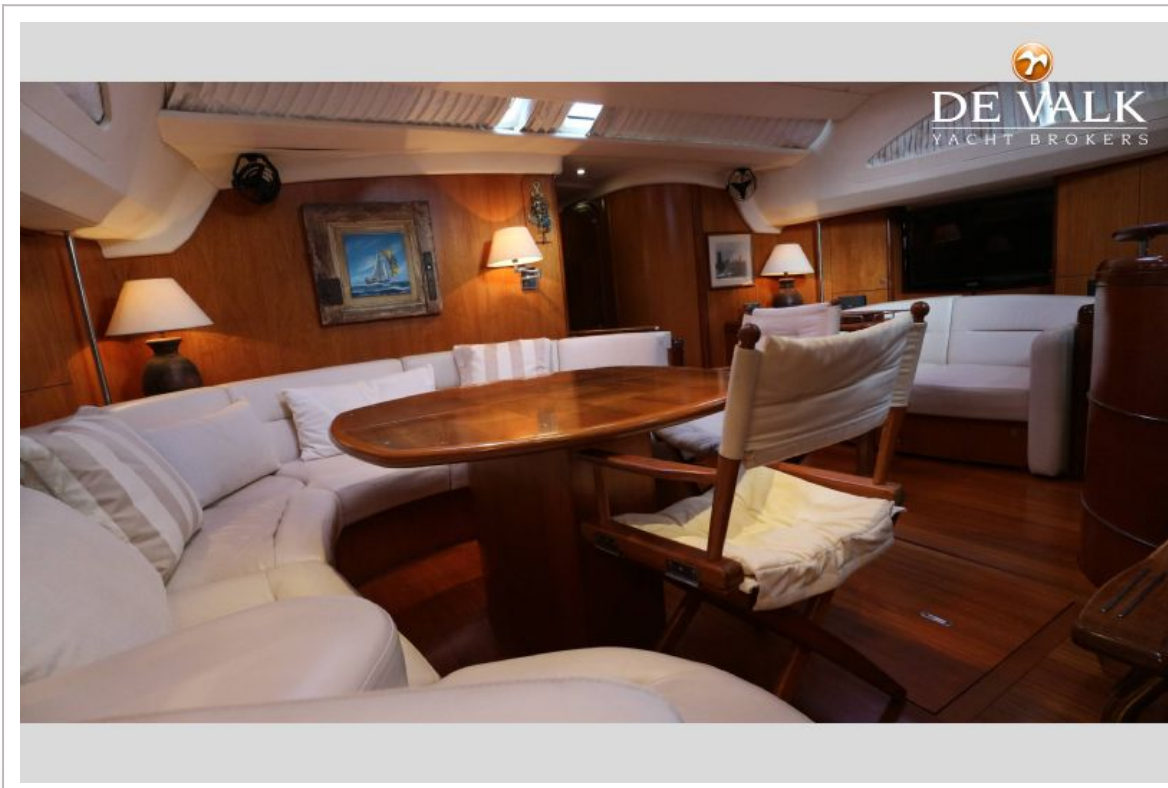
# MOODY 64



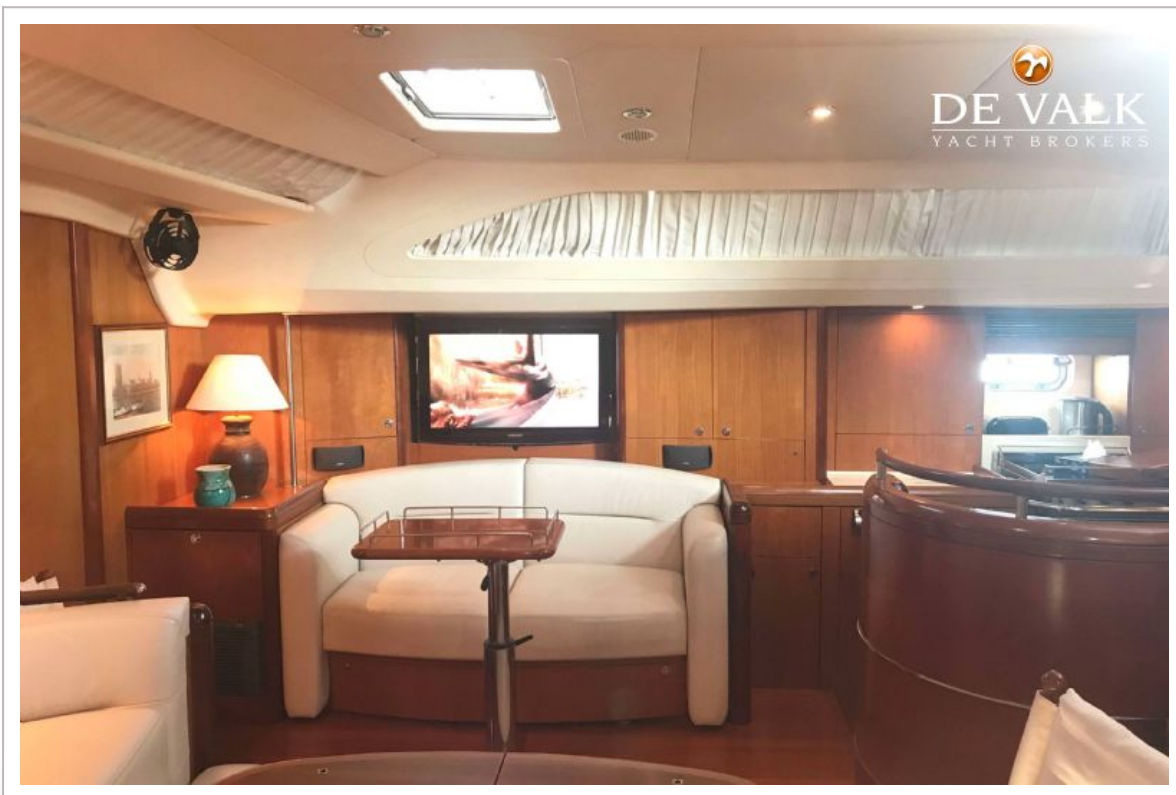
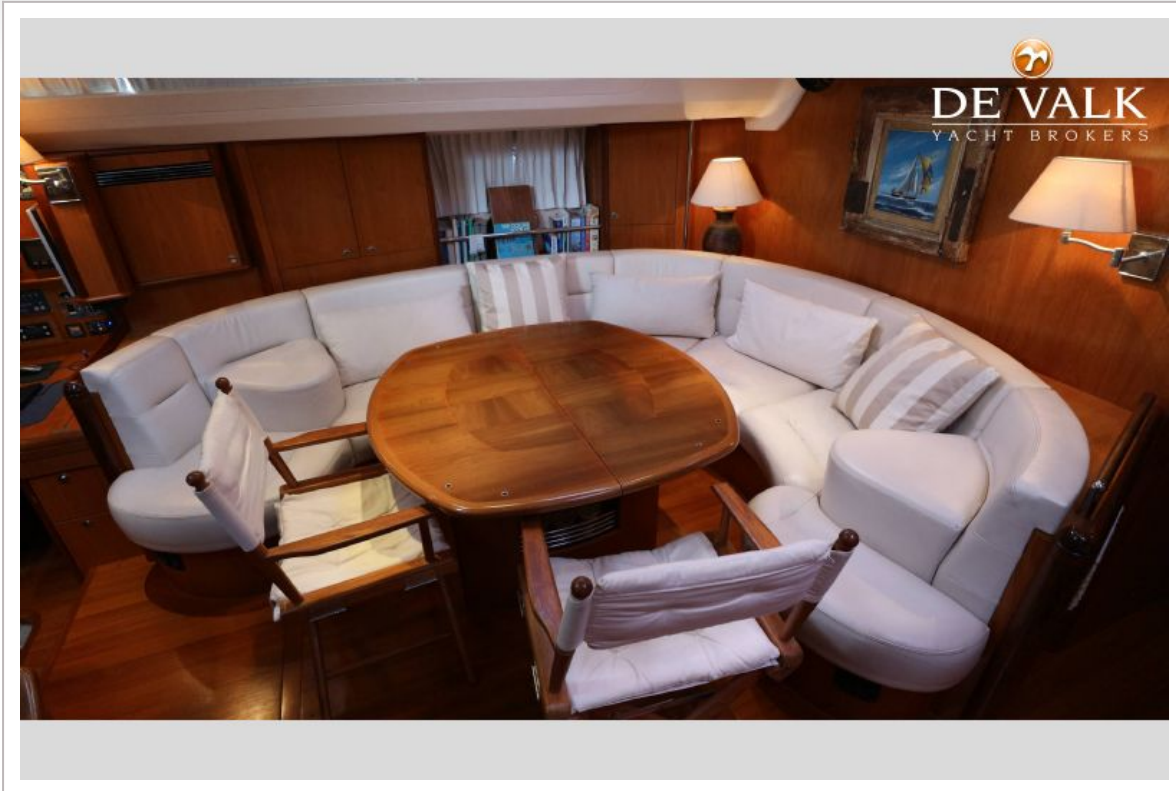
# MOODY 64



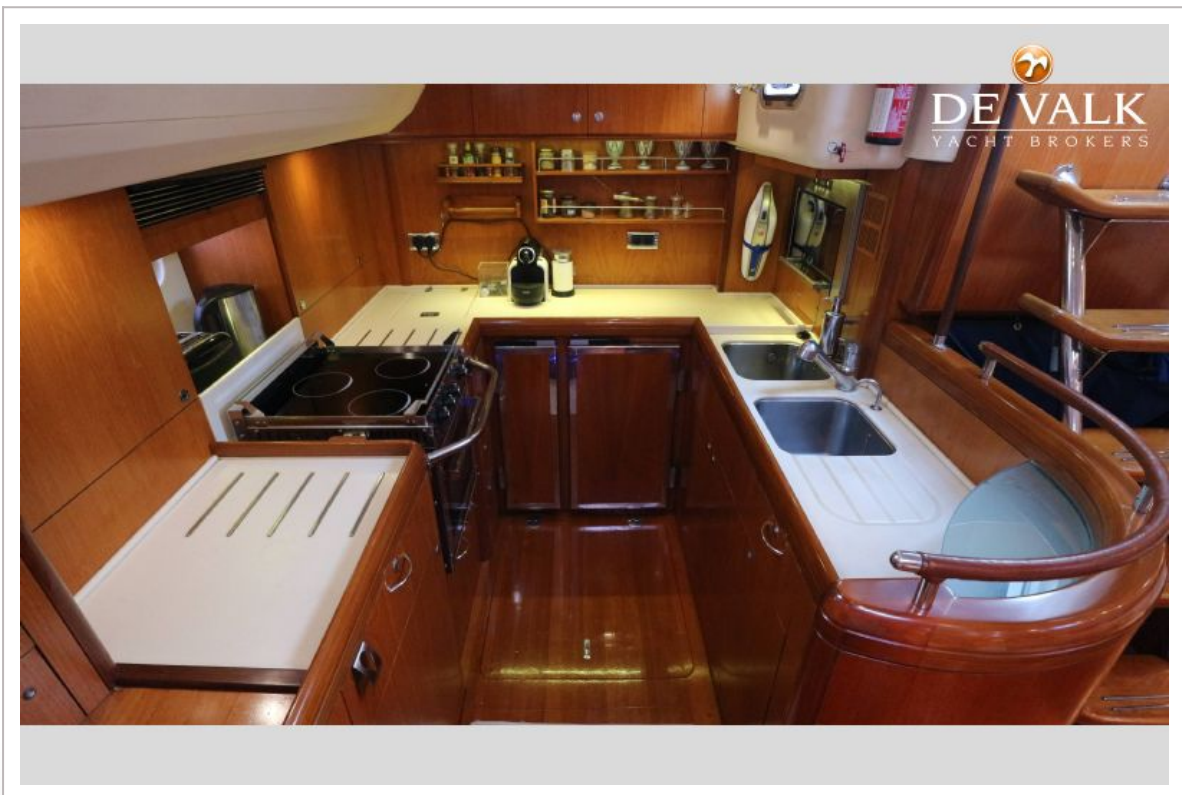
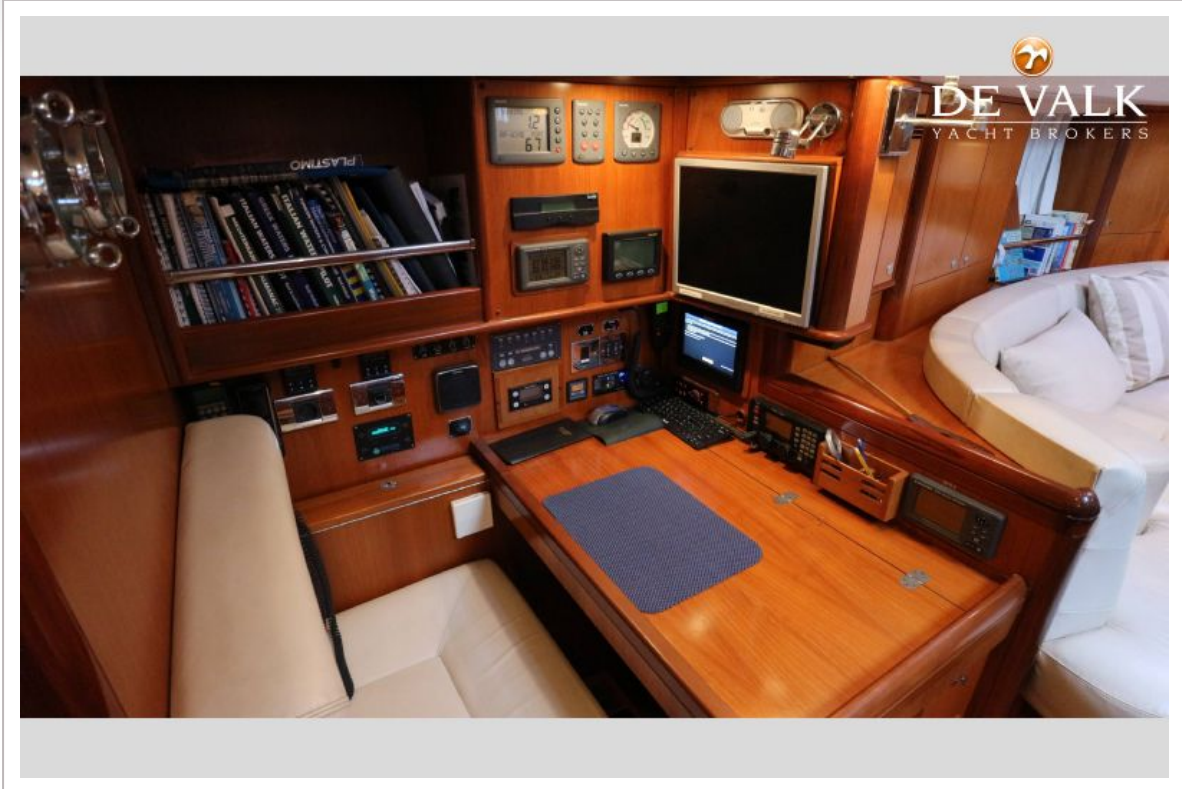
# MOODY 64



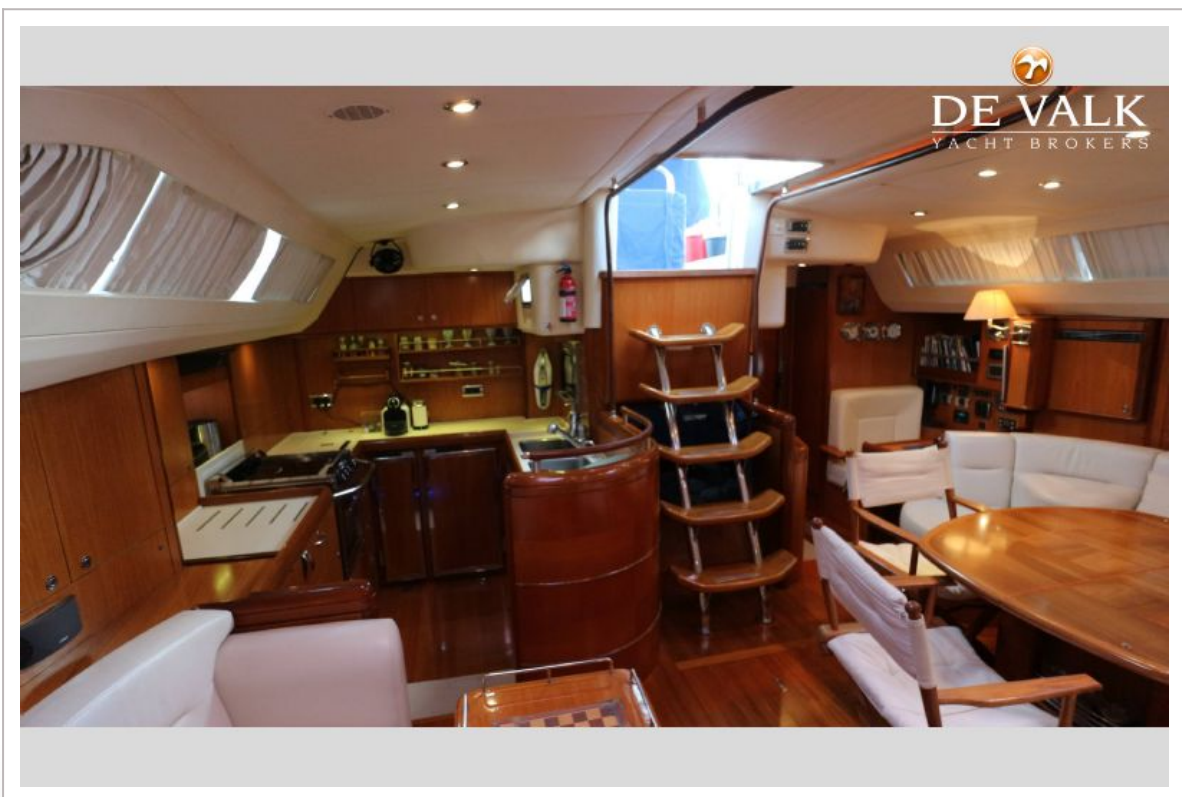
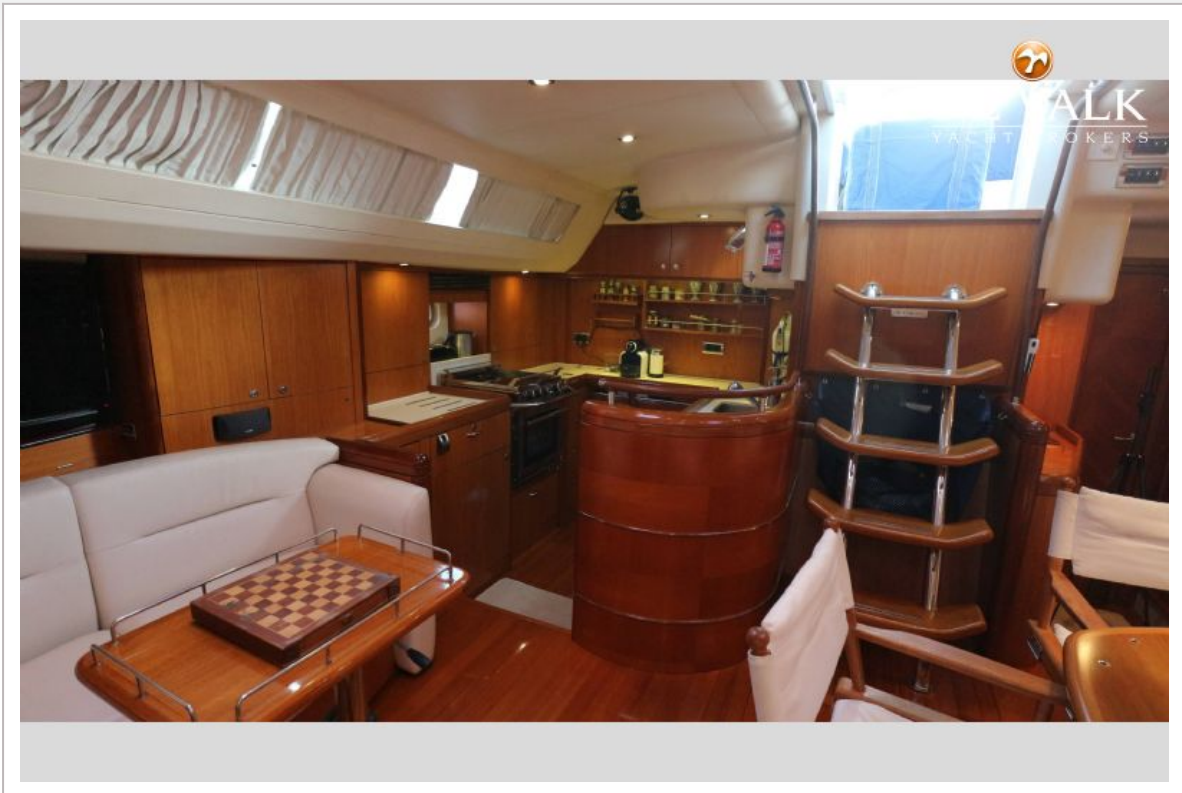
# MOODY 64



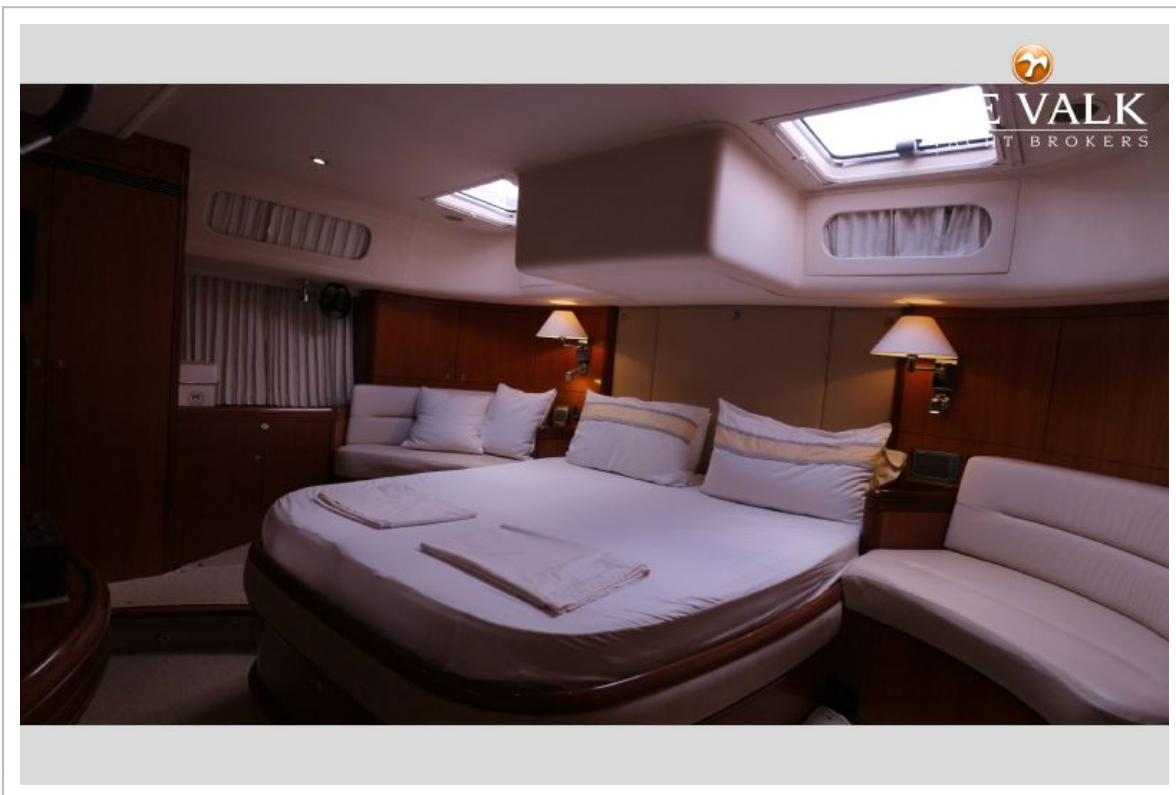
# MOODY 64



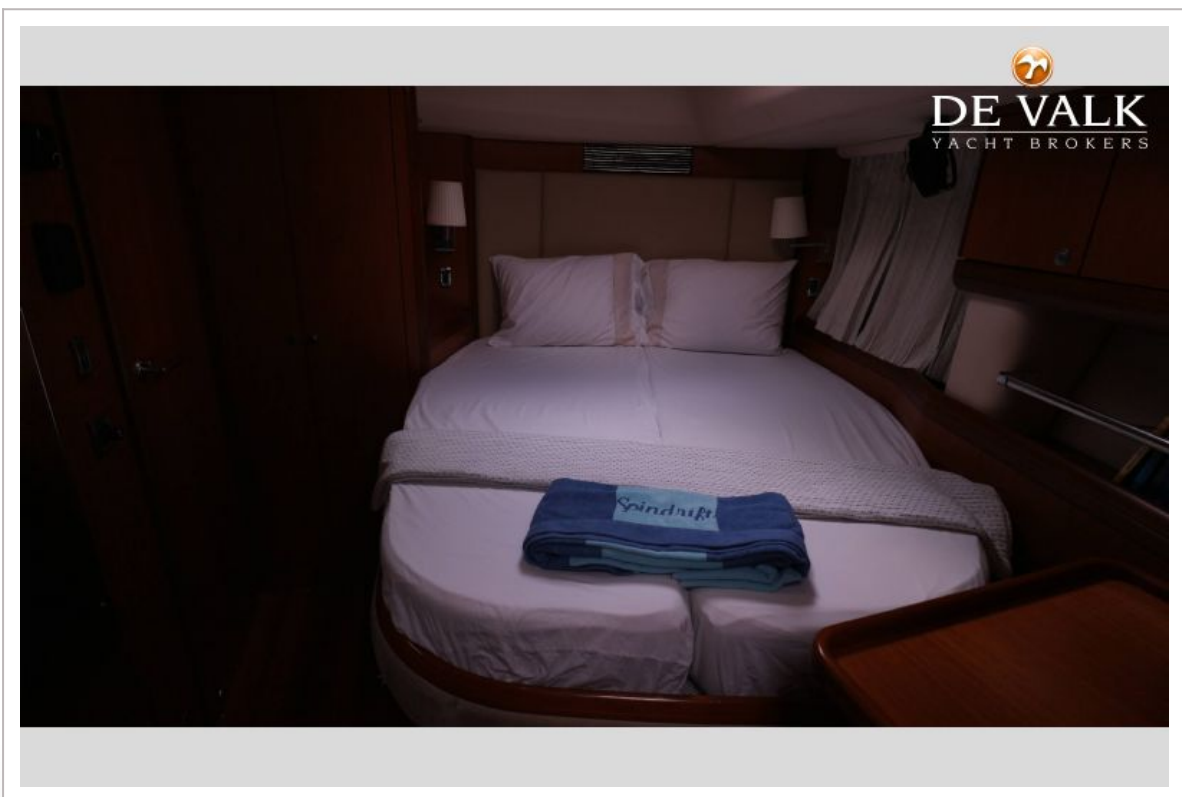
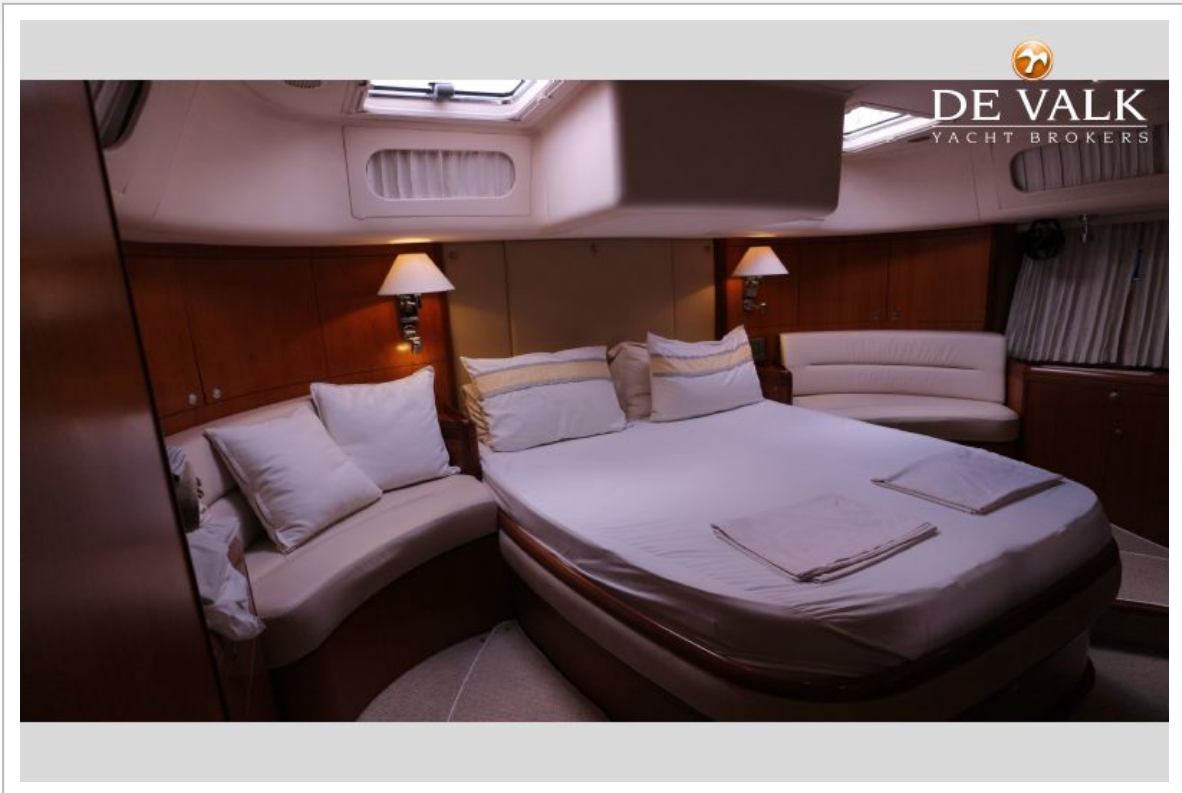
# MOODY 64



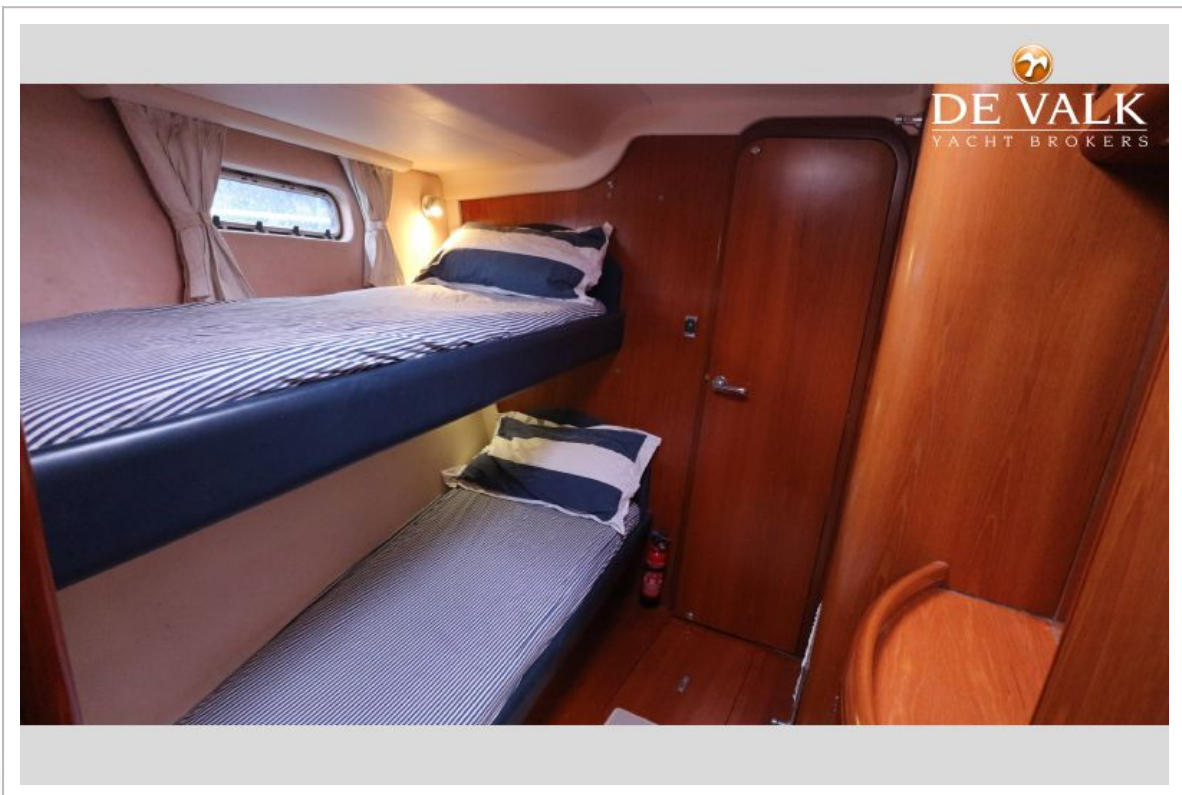
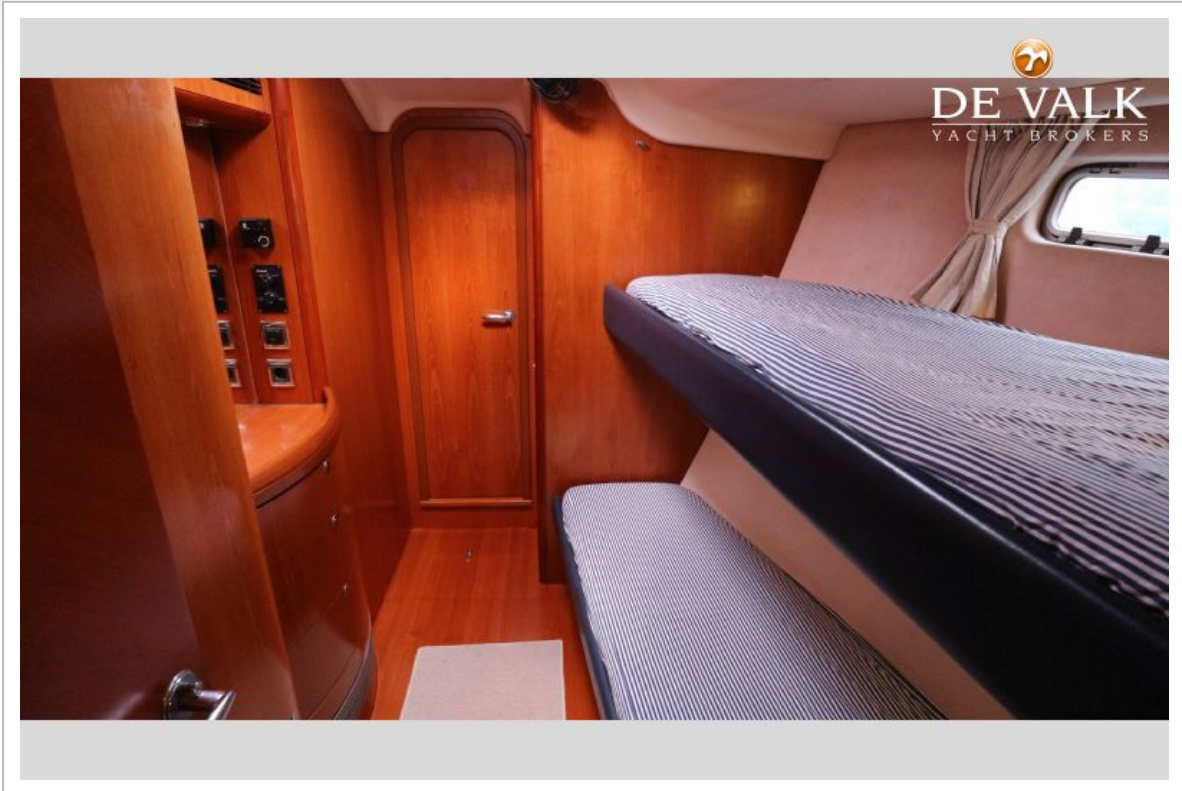
# MOODY 64



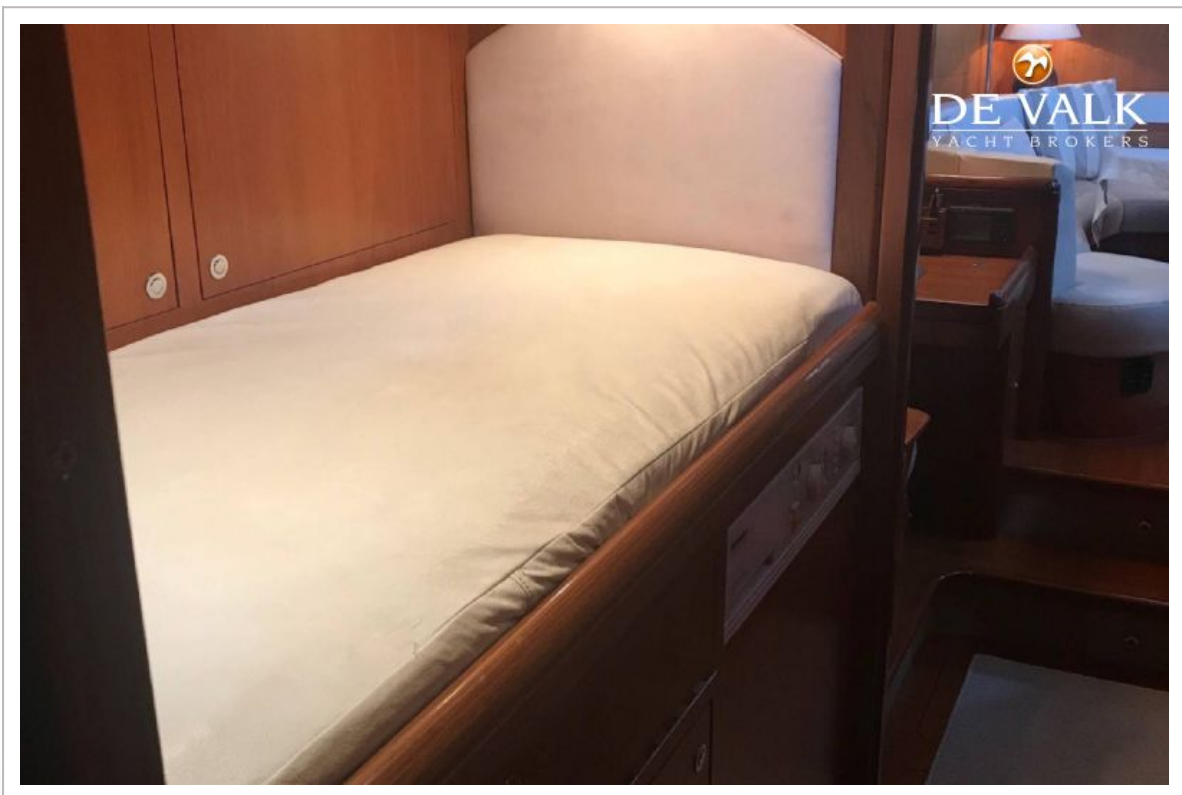
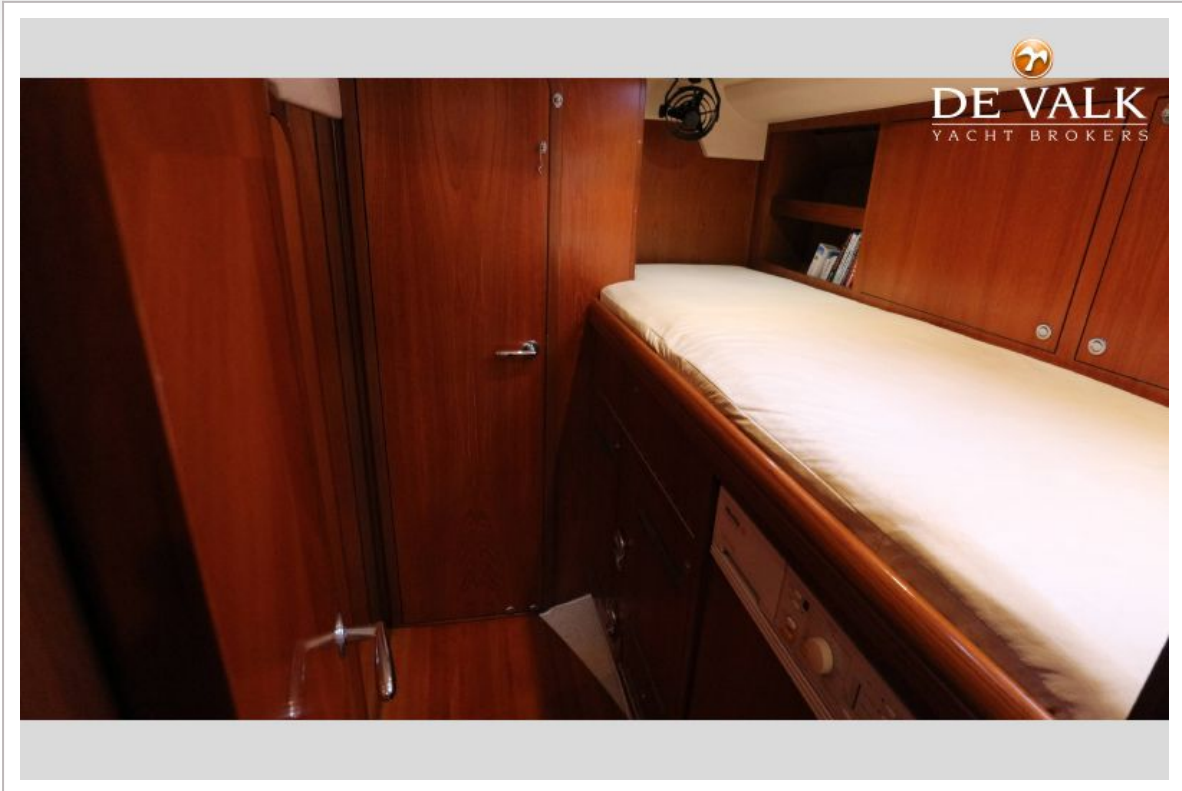
# MOODY 64

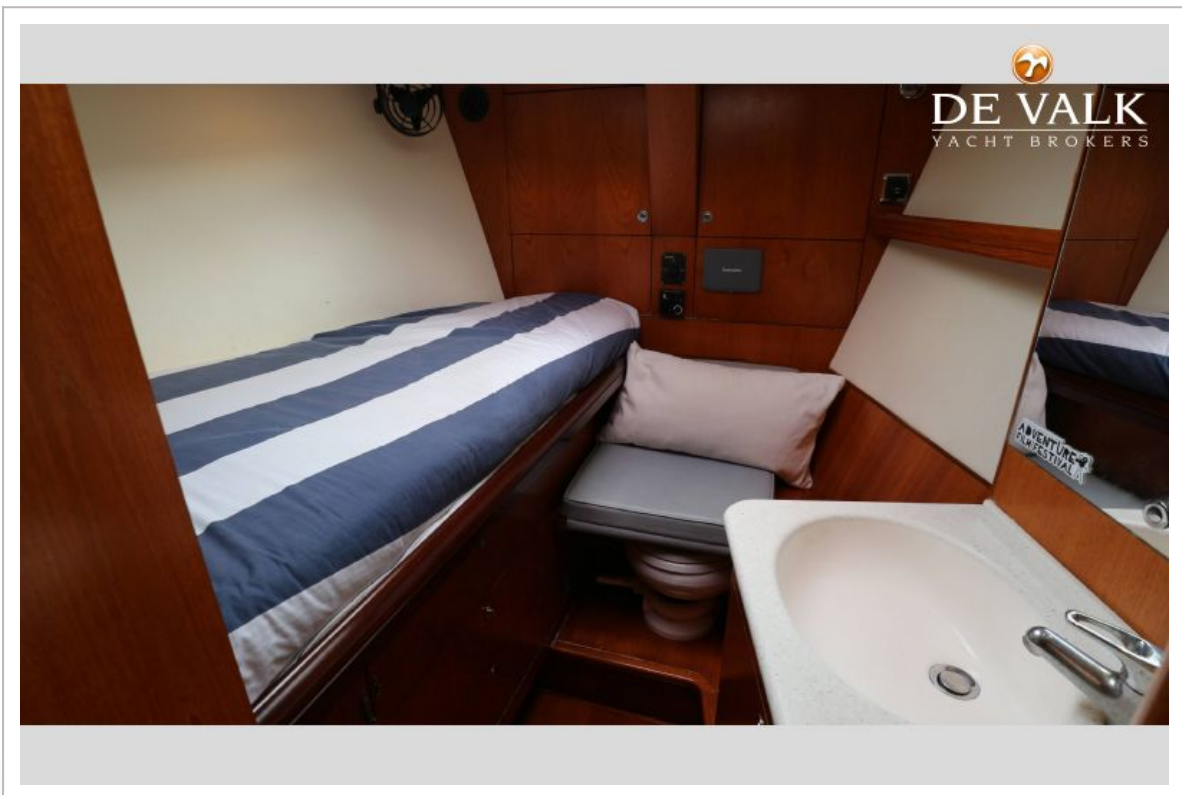
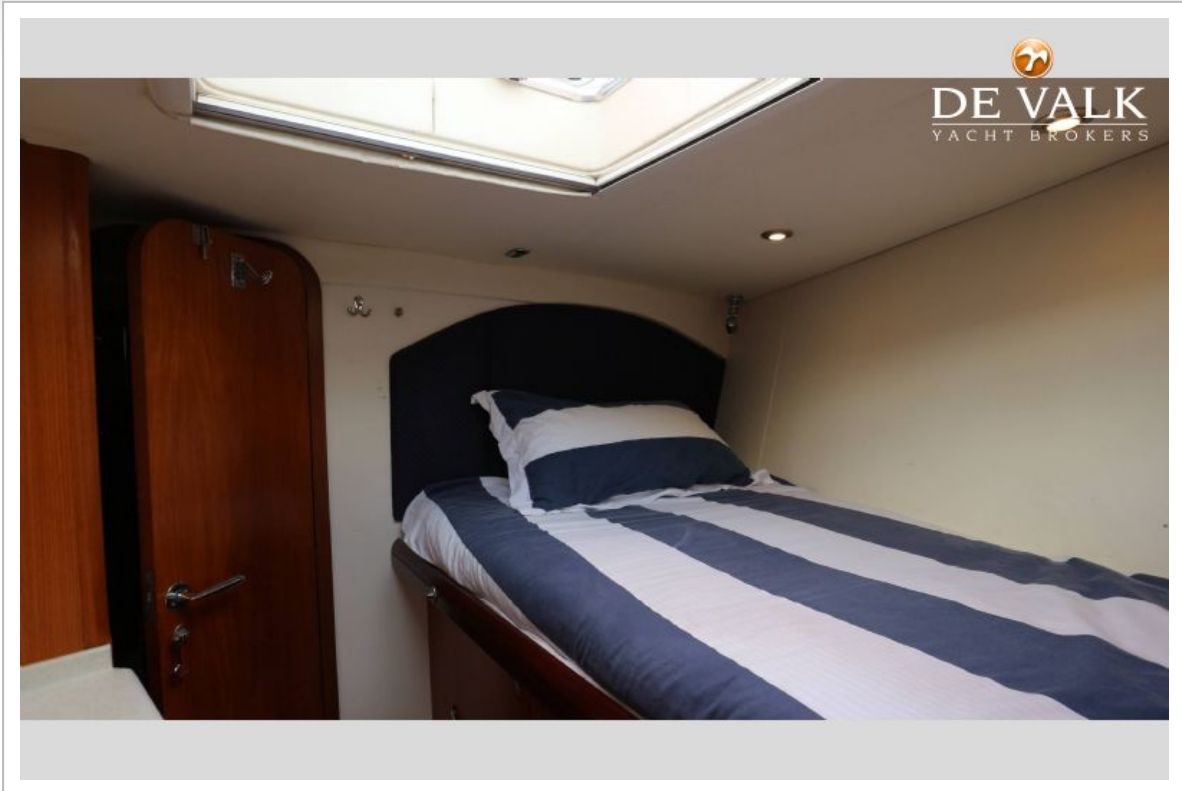


# MOODY 64



# MOODY 64





# MOODY 64

