



DE VALK
YACHT BROKERS



VOLKERAK 46



DE VALK
YACHT BROKERS

VAN DE MAKELAAR

Per Engdahl

SPECIFICATIES

| | | | |
|-------------------|------------------------------|----------------------|-------------------------|
| Afmetingen | 14.00 x 4.00 x 1.45 (m) | Bouwer | Kuyper |
| Bouwjaar | 1984 | Hutten | 2 |
| Materiaal | Staal | Slaapplaatsen | 5 |
| Motor(en) | 1 x Daf DD 575, 6 cyl diesel | Pk/Kw | 105.00 (pk), 77.28 (kw) |
| Vraagprijs | € 199.000 (BTW Betaald) | Ligplaats | contact verkoopkantoor |

CONTACT

| | | | |
|----------------|------------------------|-----------------|------------------|
| Kantoor | De Valk Sweden | Telefoon | +46 72 358 50 74 |
| Adres | 385 98 Bergkvara SE | E-mail | sweden@devalk.nl |

DISCLAIMER

Hoewel er uiterste zorg besteed is aan de correctheid, volledigheid en actualiteit van onze informatie kunnen hieraan geen rechten worden ontleend.



ALGEMEEN

| | |
|-------------------------------|---|
| Model | VOLKERAK 46 |
| Type | motorzeiler |
| Lengte (m) | 14,00 |
| Lengte waterlijn (m) | 12,35 |
| Breedte (m) | 4,00 |
| Diepgang (m) | 1,45 |
| Doorvaarhoogte (m) | 16,50 |
| Doorvaarhoogte min (m) | 2,60 |
| Stahoogte (m) | 2,00 |
| Bouwjaar | 1984 |
| Te waterlating | 1990 |
| Gebouwd door | Kuyper |
| Land | Nederland |
| Ontwerper | Ir. A. Volker |
| Waterverplaatsing (t) | 17 |
| Ballast (ton) | Loodballast 4 tons Kielmidzwaard 1 ton |
| CE norm | A |
| Romp materiaal | staal |
| Romp kleur | White |
| Rompvorm | Round bilge with keel. Depth with keel down is 2.70 |
| Kiel type | Centerboard corten steel. Restore 2020 New electric winch 2019. |
| Kimkielen | ja |
| Materiaal opbouw | Steel |
| Dek materiaal | Steel |
| Afwerking opbouw | Teak |
| Raamlijsten | Windows Hora profile copper with insulated double glazing. |
| Dekluik | Stainless steel. |
| Patrijspoorten | Portholes and light edges bronze. Wooden teak edges lacquered. |
| Isolatie | Isolation under floor: X-trem foam sheets. Black polyethylene. |
| Brandstoftank (liter) | Integrated in the bottom of the ship 500 litre |



| | |
|----------------------------------|--|
| Brandstoftank 2 (liter) | Integrated in the bottom of the ship 500 litre |
| Brandstof dagtank (liter) | Stainless steel 100 litre, 2019 |
| Drinkwatertank (liter) | 2 x 460 litre |
| Vuilwatertank (liter) | 60 litre |
| Grijswatertank (liter) | 2 X 175 litre |
| Stuurwiel | Steering wheels, made by Stazo teak. |
| Binnen stuurstand | ja |
| Buiten stuurstand | Treated with Epifanes hardwood oil varnish. |
| Extra info romp | Hull, superstructure and cockpit completely painted 2022 |

ACCOMMODATIE

| | |
|--------------------------|--|
| Hutten | 2 |
| Slaapplaatsen | 5 |
| Stuurhut/deksalon | ja |
| Verwarming | Dickinson Antarctic, oil heater. 4 Radiators |
| Verwarming 2 | Eberspächer, (2018) airtronic. January 2022 new engine installed |
| Kaartentafel | ja |
| Achterkajuit | ja |
| Keuken | ja |
| Aanrechtblad | ja |
| Spoelbak | ja |
| Kooktoestel | Four-burner (Ikea), type NUTID, 230 volt (2011) Induction. |
| Oven | Oven: new 2025 Wilfa 3 in 1: oven, air fryer and microwave |
| Koelkast | Refrigerator with separate compressor, Vittrifigo, 24 volts |
| Vriezer | Fridge 45 watt, 130 liters incl. freezer compartment (2019 |
| Warmwatersysteem | Boiler Isotemp, inhoud 30 liter, 1000 watt |
| Waterdruksysteem | ja |
| Kokendwaterkraan | ja |
| Koffiezetapparaat | Quick Mill 0820 Espresso Machine. (2018) |
| Eigenaarshut | New Flexima mattress with topper. |
| Kledingkast | ja |



| | |
|-----------------------|---|
| Badkamer | ja |
| Toilet Systeem | PAR, automatic water system pump, 31395-0294, 24 volt |
| Wasbak | ja |
| Douche | ja |
| Gastenhut 1 | Aft: Froli Bed system plus topper |
| Kledingkast | ja |
| Toilet systeem | ja |
| Wasbak | ja |
| Douche | ja |
| Extra info | Heating: 3 Mill electric panel heaters. 2022 and 2024 |
| Wasmachine | Candy washingmachine. New 2023. |
| Extra info | More detailed info in separate document |

MOTOR(EN)

| | |
|-------------------------------|---|
| Aantal motoren | 1 |
| Merk | Daf |
| Type | DD 575, 6 cyl |
| Pk | 105 |
| kW | 77.28 |
| Brandstof | diesel |
| Geïnstalleerd in jaar | 1990 |
| Gereviseerd in jaar | Spring 2018 Engine maintenance 2020 and 2022 Engine maintenance |
| Maximale snelheid (kn) | 8.5 knots |
| Kruissnelheid (kn) | 6 |
| Aandrijving | schroefas |
| Schroefas afdichting | Grease-lubricated propeller shaft: Shaft: renovated in 2022 |
| Boegschroef | Vetus, 220 kgf, type BoW22024, 24 volts, diameter 300 mm. |
| Type schroef | Fixed |
| Schroefbladen | 3 blades |
| Handlenspomp | ja |



| | |
|-----------------------------|--|
| Elektrische lenspomp | ja |
| Generator | Mobiele generator: Honda EU 22i, serie nr 31798 (2019), 2.2 kw |
| Accu's | 2 New in 2020 |
| Startaccu | ja |
| Lichtaccu | New in 2023 |
| Boegschroefaccu | New in 2020 |
| Accu monitor | Victron Battery Monitor BMV 602 Victron Color-Control GX Monito |
| Acculader | Victron Skylla 24/50, input 110/220/240 volt. output 24 volt 50A |
| Acculader/omvormer | Victron Quattro 5000 (2009), lader & omvormer |
| Zonnecellen | Sunware. New in 2023 |
| Walstroom | ja |
| Scheidingstrafo | Victron Isolation transformer, 3600 watt. Nieuw 2024. |
| Extra info | Internet. • Teltonika Wifi, router, type RUT 955 LTE. 2018 |
| Extra info | Alfa Tube 2H Wifi antenna mizzen mast 2018. |

NAVIGATIE

| | |
|-----------------------------|--|
| Kompas | Cestrel Moore Compass |
| Electrisch kompas | Raymarine SPX-30 core pack with fluxgate compass and rudder pos |
| Windmeetset | Raymarine triducer (2019): Windvaan: E22078 |
| Repeaters | Raymarine triducer (2019): Display. I70s. 2 times E30327 |
| Marifoon | VHF, sailor, type RT 144 |
| Autopilot | Raymarine autopilot. Type 2 24V Pump. 2021 |
| Roerstand aanwijzer | VDO. Doesn't work. However, page made on autopilot display |
| Radar | Raymarine autopilot. Type 2 24V Pump. 2021 |
| Plotter | Raymarine plotter (2018). ES series eS75 MFD Wifi. E70263 |
| Wifi antenne | Alfa Tube 2H Wifi antenna mizzen mast 2018. |
| AIS ontvanger | True Heading. AIS CTRX Class B Responder. TRU2494 2009. Main swi |
| AIS transceiver | True Heading. AIS CTRX Class B Responder. TRU2494 2009. |
| Navigatieverlichting | ja |



Extra info SSB radio Kenwood R-5000 nr 8020322, AC 120/220/240 volts, dc 12

Extra info Remote Controller autopilot. S100 E15024

UITRUSTING

Zonnetent ja

Anker Rocna 33kg. 2022.

Ankerketting 50 meters of chain laid out, checked and 10 meters of indication

Bijboot Dinghy Nimarine RIB 310 2018

Buitenboordmotor Electric. Torqueedo 1003 2018

Davits ja

Davits bediening ja

Hekstoel ja

Preekstoel ja

Reddingsvlot SeaSafe 6 people,

Reddingsvlot (pers) 6

Reddingsvlot laatst gekeurd 2021

Zwemvesten 4

Reddingsboei Round orange hard lifebuoy

Veiligheidslijnen op dek Lifesling

Ruitenwisser Marin Windshield Wiper. Port front

Stootkussens ja

Landvasten ja

TV ja

Brandblusser 2 fire extinguishers, approved

Automatisch brandblussysteem 2 times Fire Suppression Systems. 25 sec. and 50 seconds.

Extra info Carbon monoxide detector Kidde 5CO

TUIGAGE

Tuigage Masts Oregon pine, renovated 2019. 2022: 3 new coats of lacquer



| | |
|-----------------------------|---|
| Standaard want | Stainless steel, main rigging 10 mm, bottom rigging 8 mm Miz 7m |
| Grootzeil | Brown dacron 31,5 m ² |
| Grootzeilhuik | ja |
| Bezaan | Brown dacron 13.5 m ² |
| Bezaanzeilhuik | ja |
| Fok | Brown dacron 12 m ² |
| Genua rolreefsysteem | 2024 Riggmaster Furler system from Facnor. |
| Genua hoes | ja |
| Halfwinder | Red and white halfwinder 95 m ² |
| Grote kluiver | Brown dacron 37 m ² |
| Stormgrootzeil | 8.0 m ² oranje dacron |
| Stormfok | 8.0 m ² oranje dacron |
| Genua schootlieren | Barbarossa ST bronze, four pieces |
| Vallieren | Bronze, four pieces |
| Reeflier | Barbarossa bronze, three pieces |
| Extra info | Winch for keel centerboard:Warn, type RT30, 24 volt DC (2019) |

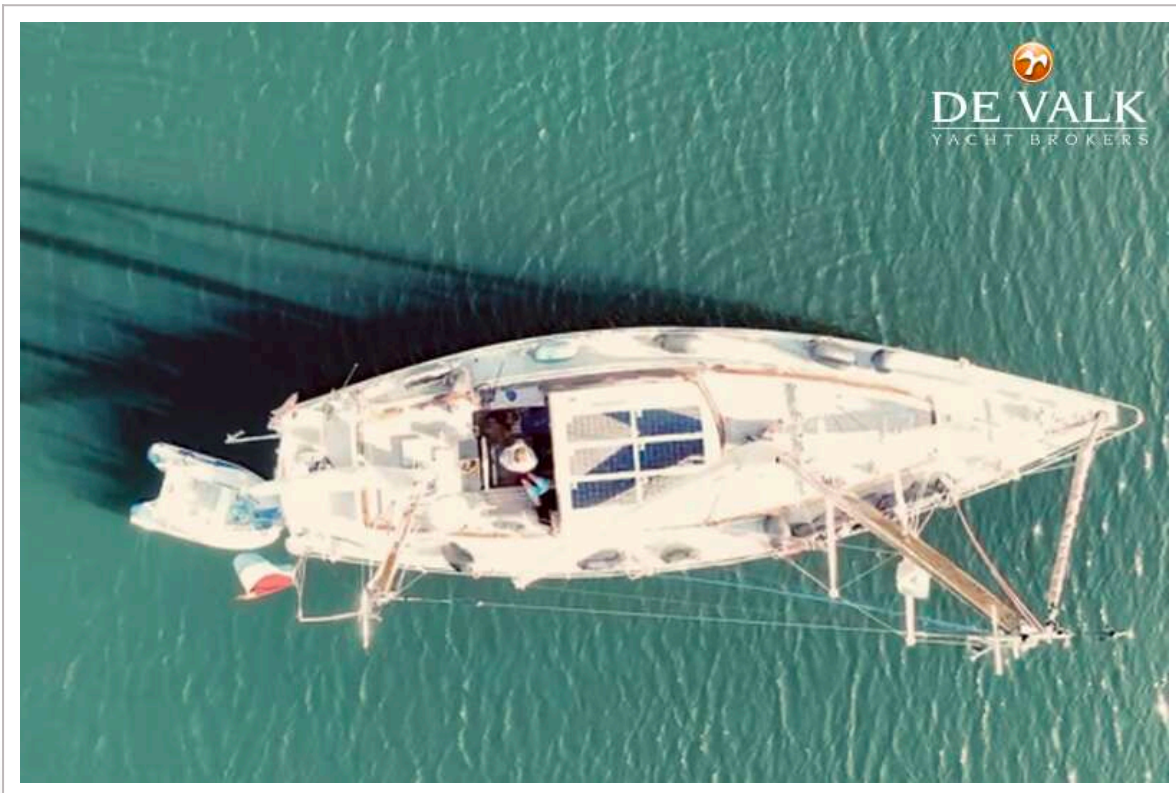


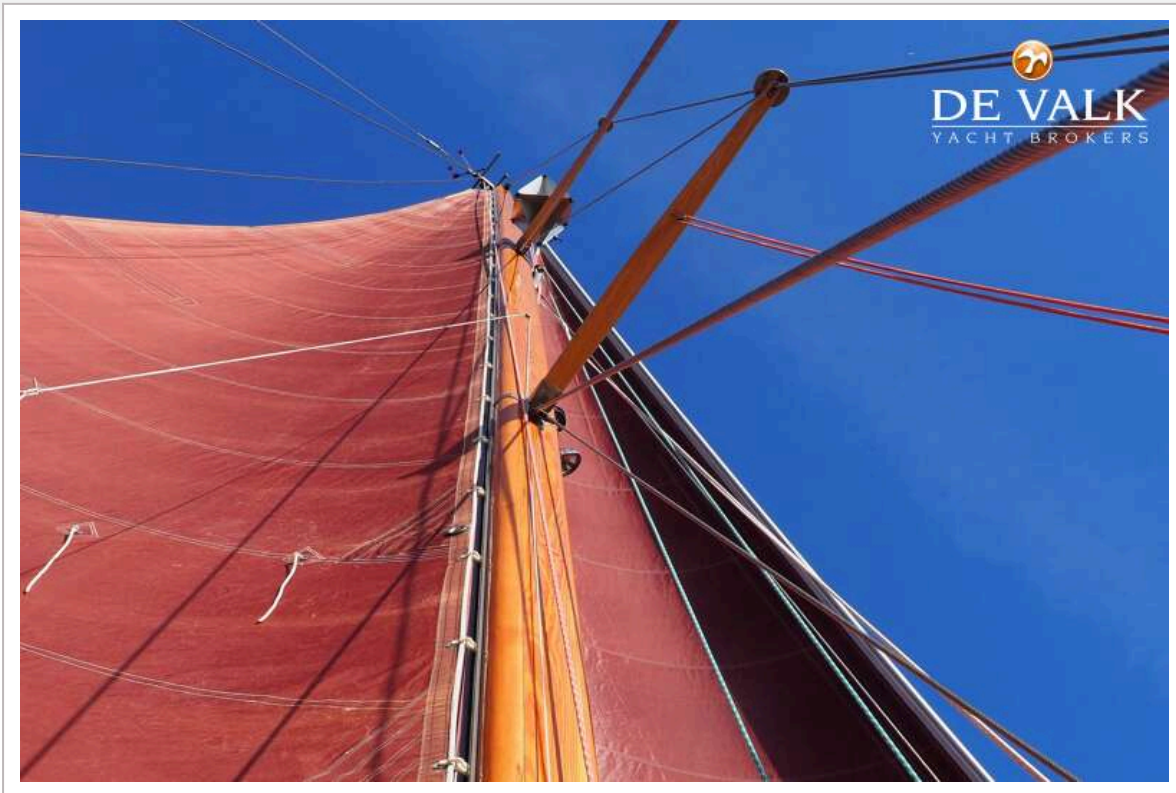
VOLKERAK 46





VOLKERAK 46

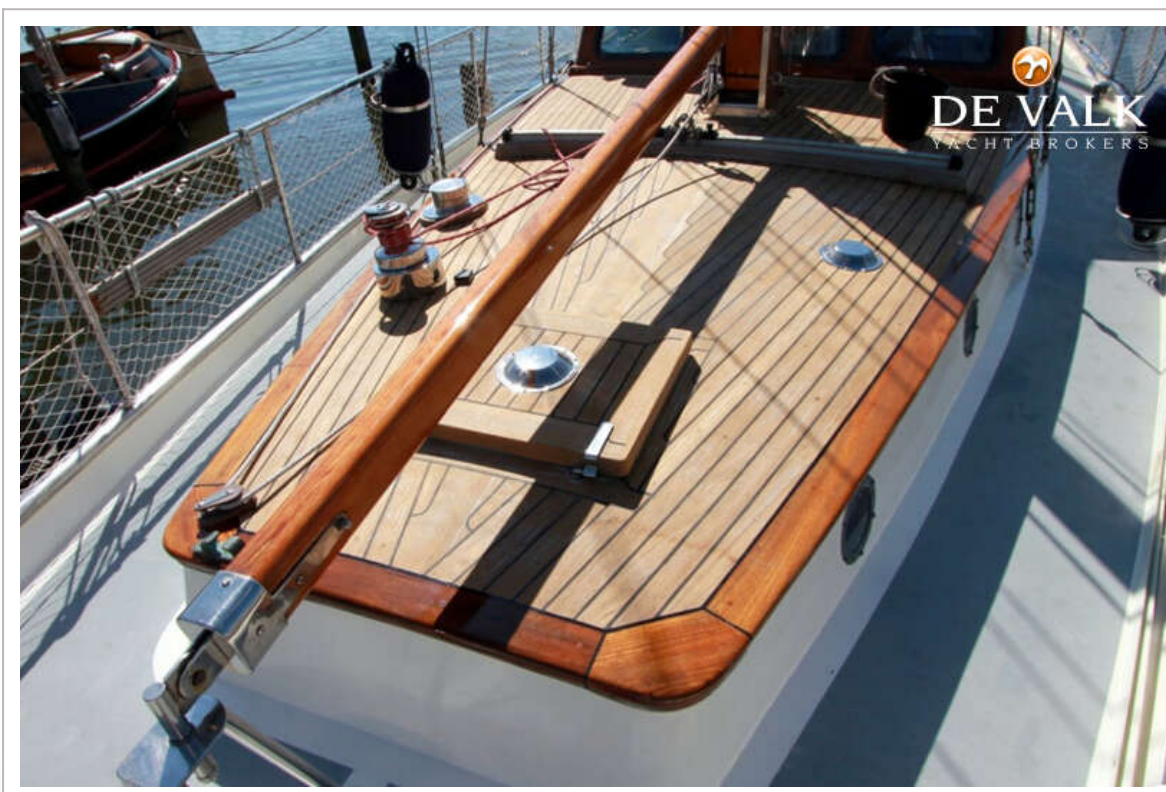




VOLKERAK 46



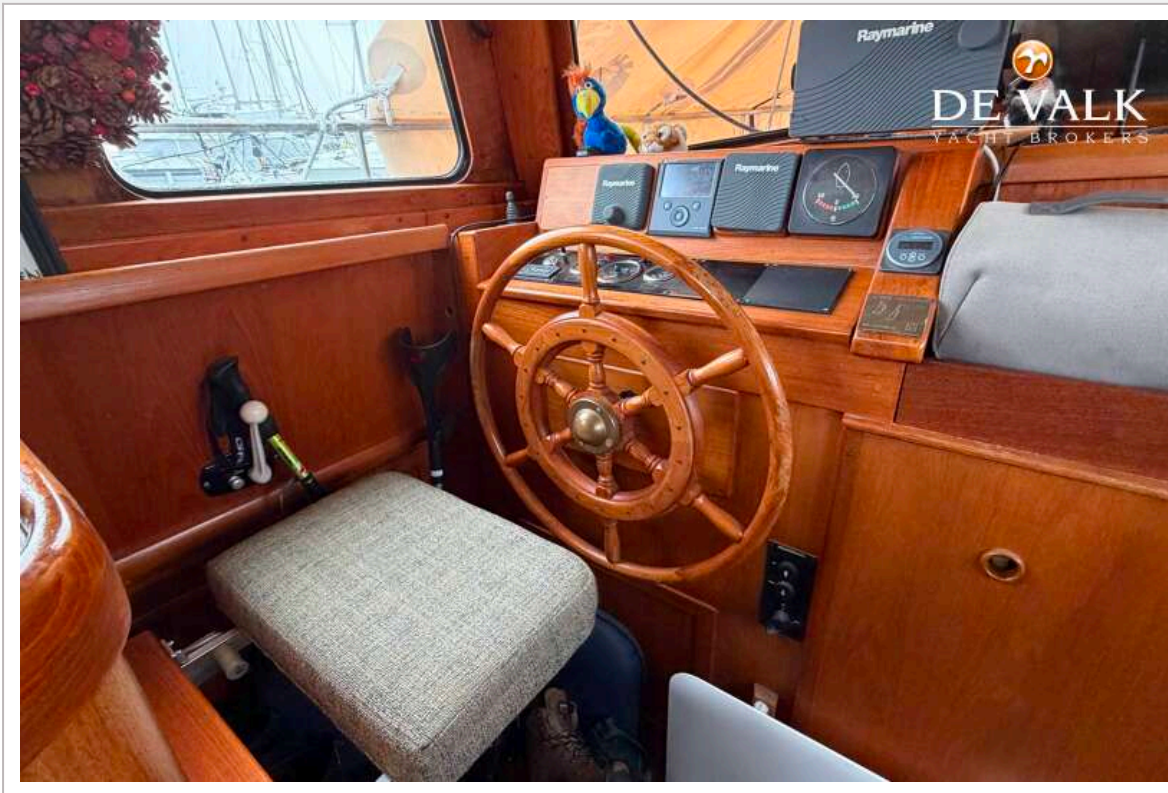
VOLKERAK 46

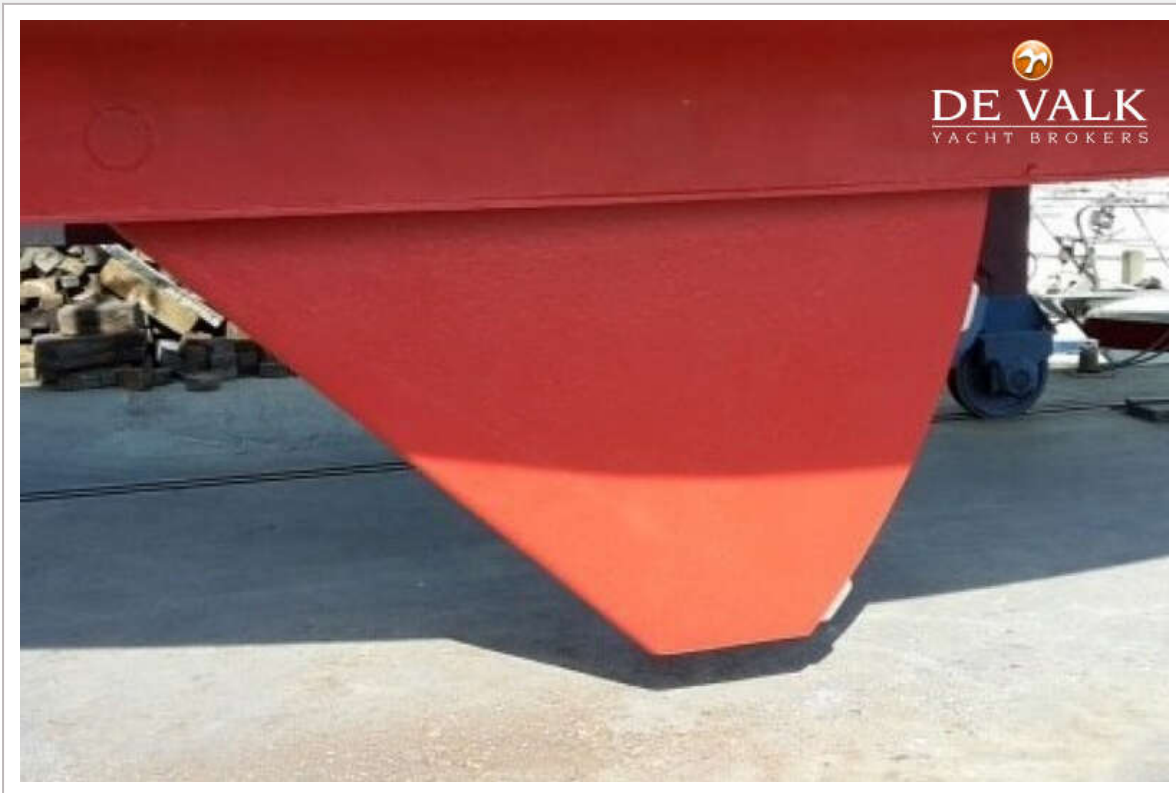


VOLKERAK 46

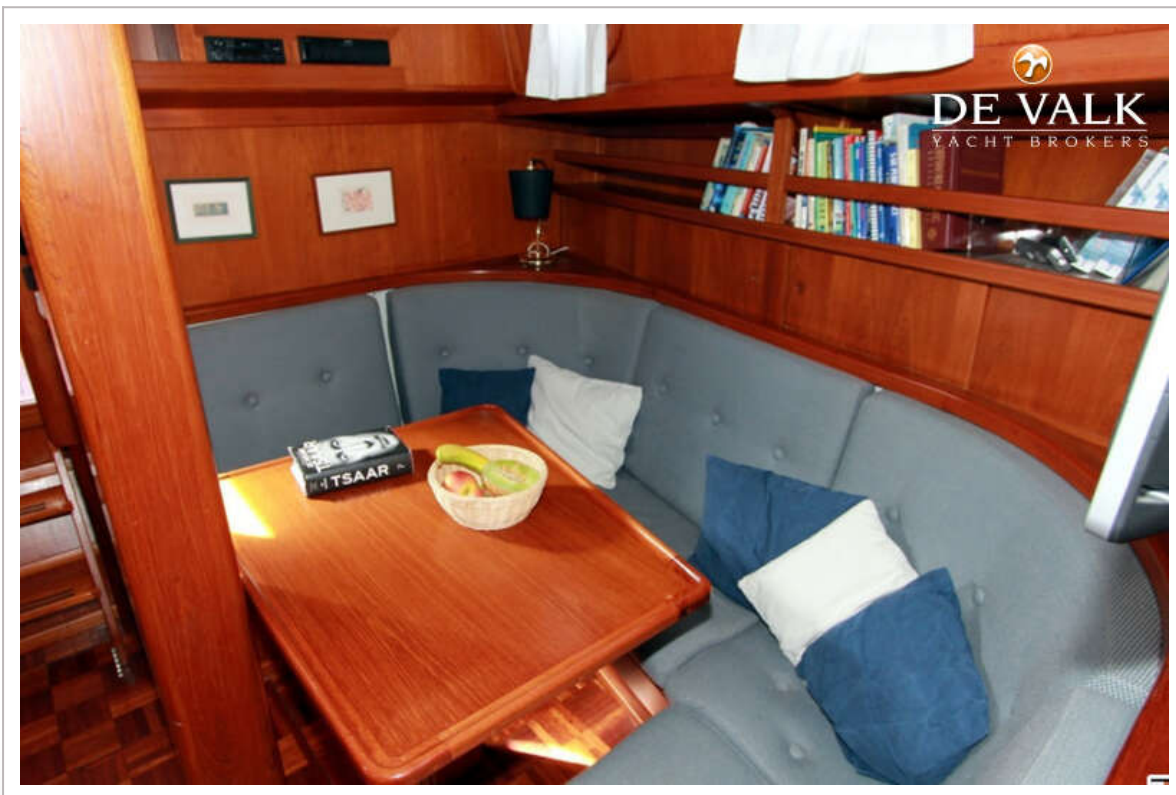
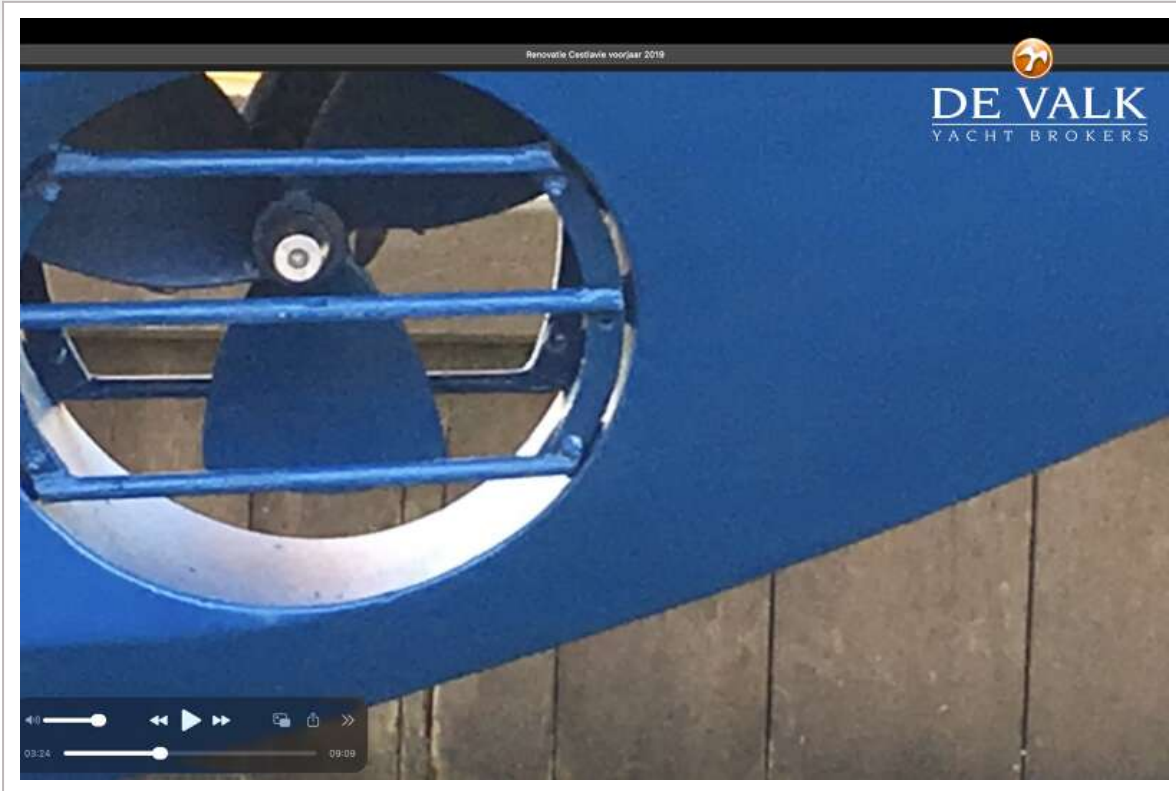


VOLKERAK 46

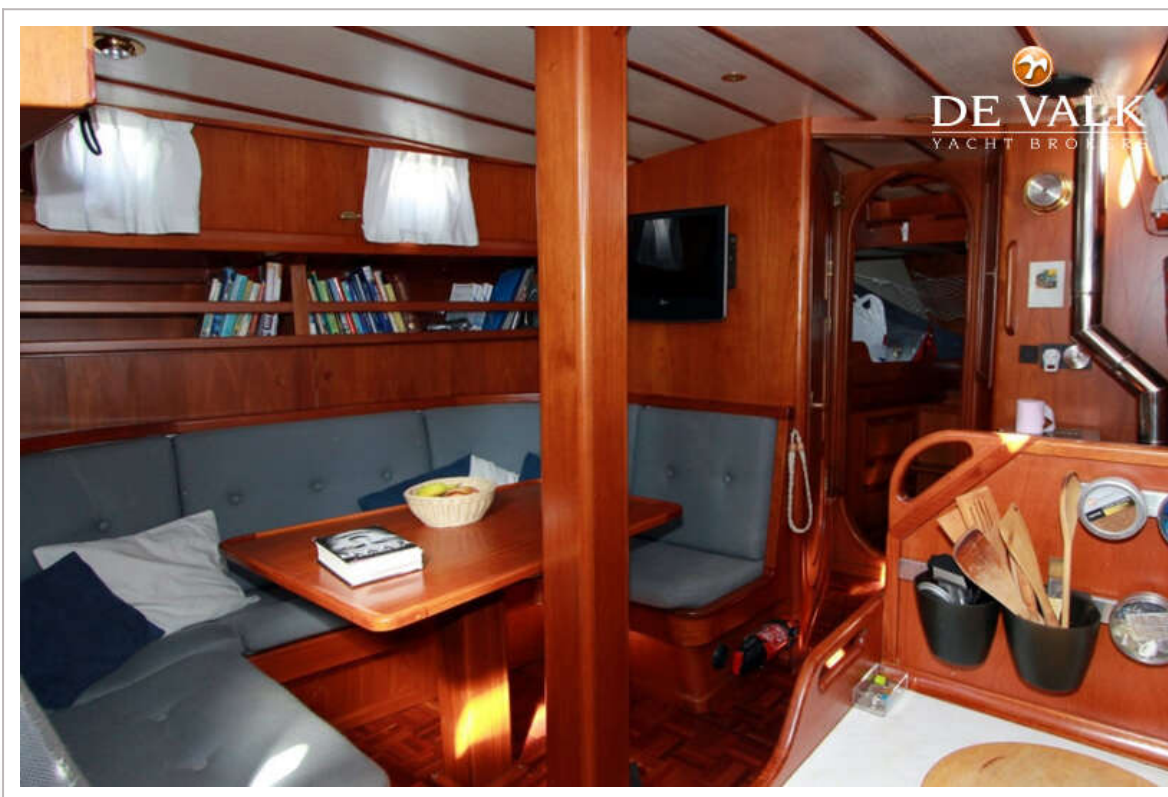


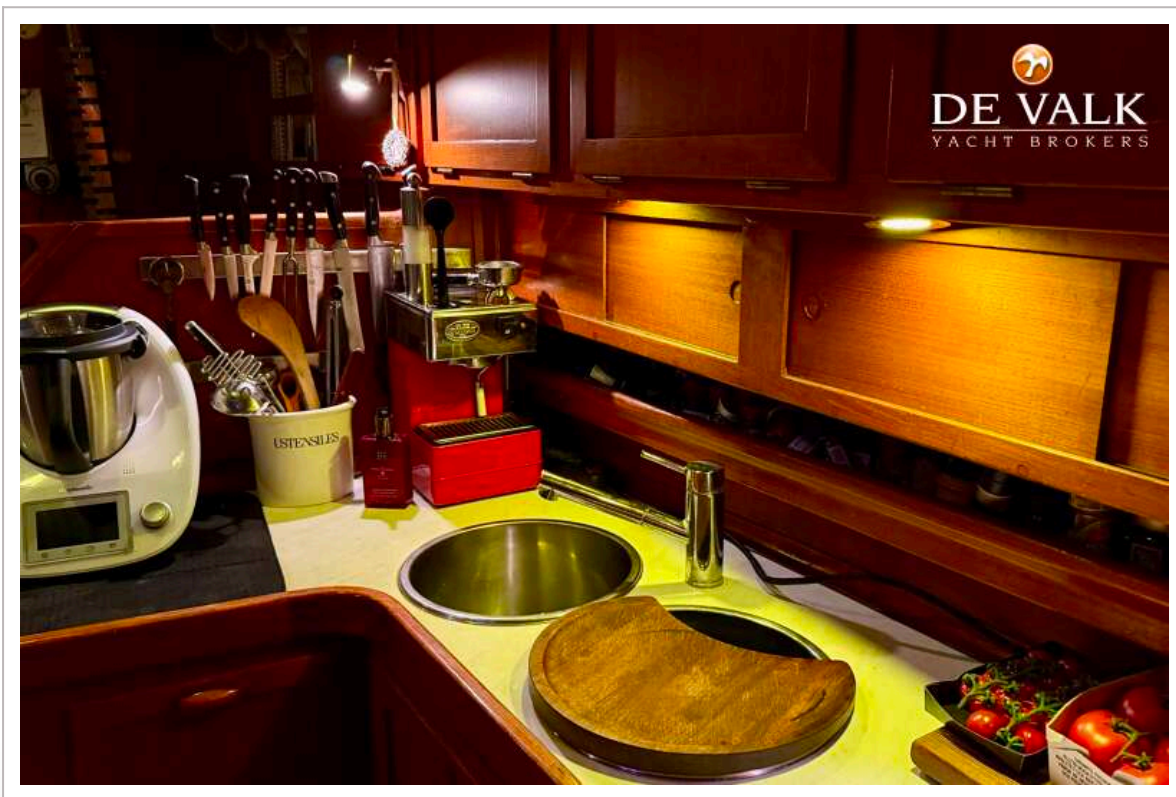
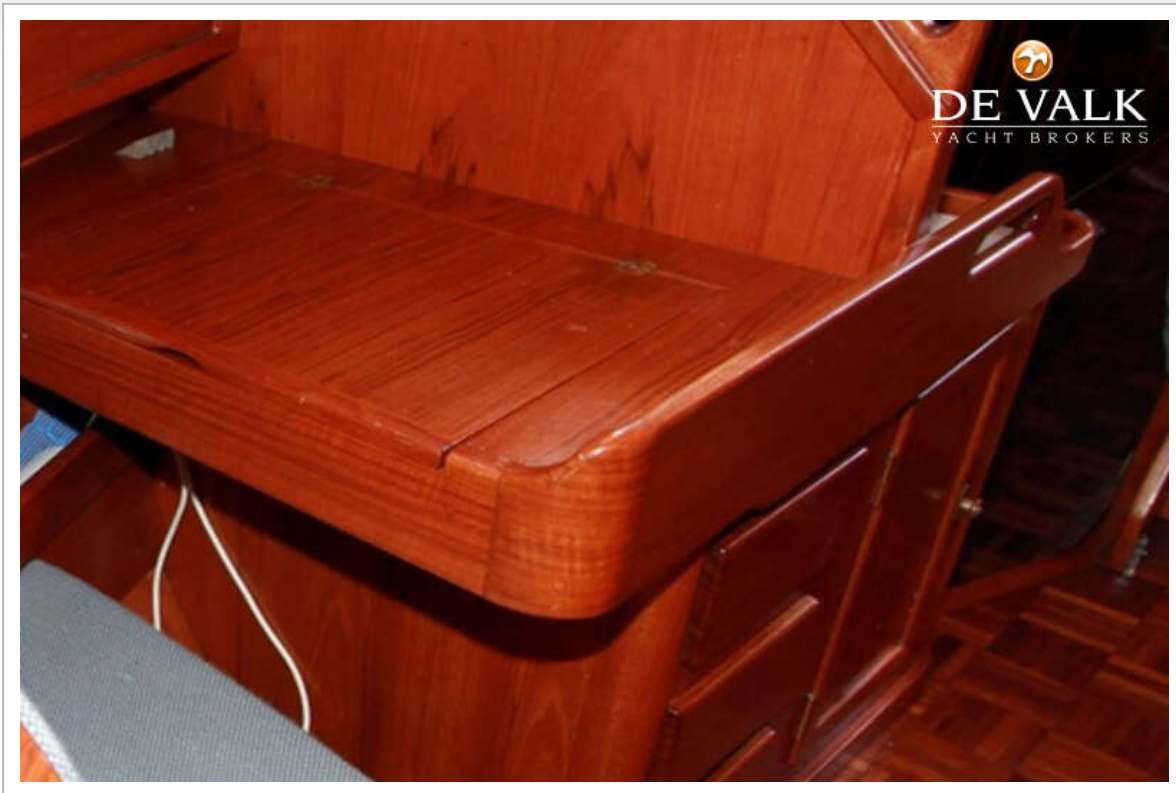


VOLKERAK 46



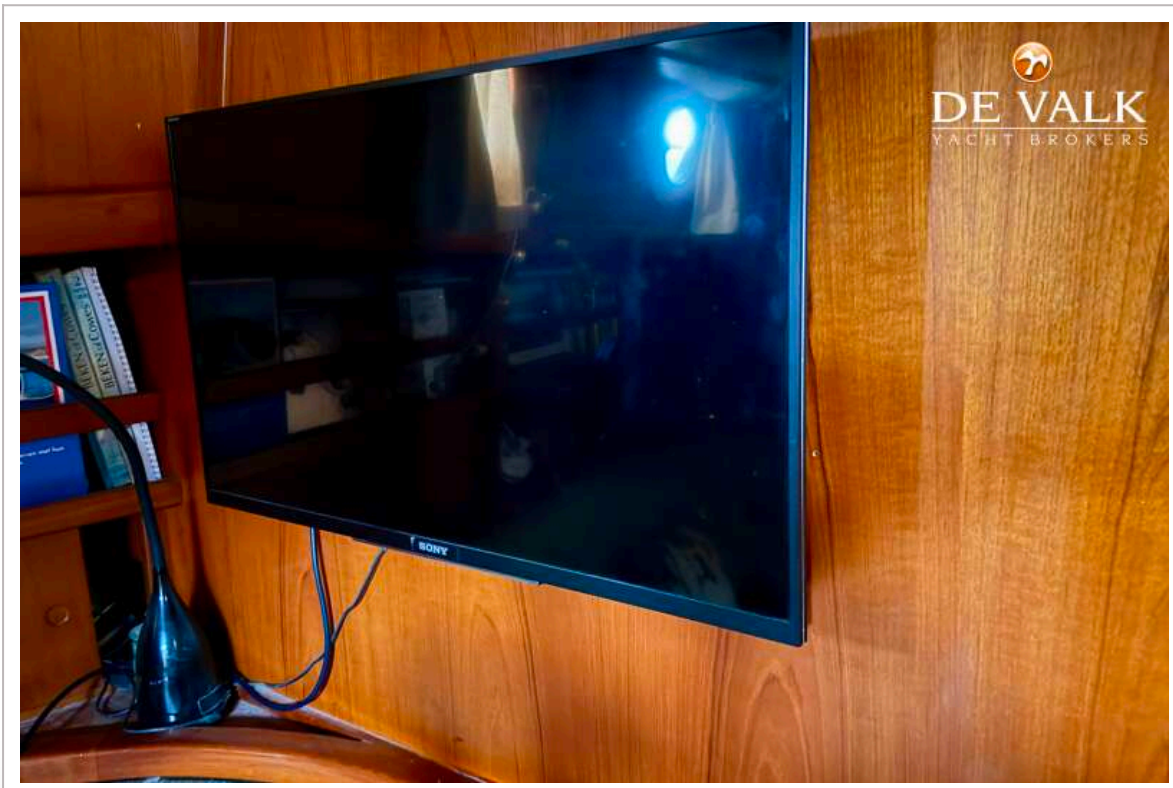
VOLKERAK 46







VOLKERAK 46



VOLKERAK 46



