



DE VALK
YACHT BROKERS



BENETEAU FIRST 45f5



DE VALK
YACHT BROKERS

BENETEAU FIRST 45f5

BROKER'S COMMENTS

"With the help of one of the of the worlds best naval architects; Bruce Farr, together with another famous designhouse Pininfarina, Beneteau made this modern cruiser to please all people who like modern styled, elegant and good performing sailingyachts."

SPECIFICATIES

Afmetingen	14,20 x 4,25 x 2,20 (m)	Bouwer	Beneteau
Bouwjaar	1990	Hutten	3
Materiaal	Polyester	Slaapplaatsen	8
Motor(en)	1 x Perkins Prima 4-20 Diesel VERKOCHT	Pk/Kw	50 (pk), 36,75 (kw)
		Ligplaats	bij verkoopkantoor

CONTACT

Kantoor	De Valk Sint Annaland	Telefoonnr.	+31 166 601 000
Adres	Koelhuisweg 4 4697 RM Sint Annaland The Netherlands	Fax	+31 (0)166 654 267
		E-mail	sintannaland@devalk.nl

DISCLAIMER

Hoewel er uiterste zorg besteed is aan de correctheid, volledigheid en actualiteit van onze informatie kunnen hieraan geen rechten worden ontleend.



ALGEMEEN

GRP sailingyacht, build in 1990, by Beneteau in France. dim: 14,20 (lwl 11,90) x 4,25 x 2... m, design by Bruce Farr & Pininfarina, headway: 22,60 mtr, built to France Cat 1 specifications, GRP hull, deck and superstructure, cockpit seats and floor laid with teak. perspex window in aluminium framing, roundbilged hull, fin keel balance semi elliptical rudder, displacemant: 10.5 tonnes, ballast: 3.8 tonnes (cast iron), ss - fuel tank; 160 ltrs., fresh water tank: 650 ltrs., Solimar mechanical wheelsteering.

ACCOMMODATIE

Modern mahony interior, 3 cabins and saloon, 8 berths, headroom in saloon 1.90m, 2 x manual u.w. toilet, 2 x shower, galley with Techimpex three burner gasstove with oven , electric/manual waterpressure system, Frigomatic 12v fridge, boiler hot water system (220v + engine), lots of stowage place. Keen sail-locker in front of forward toilet.

MOTOR(EN)

Perkins M-50 50hp (36 kW) diesel, installed in 1990, approx. 1682 running hours, indirect cooling system, mechanical gearbox, s.s. propellershaft, Max Prop three bladed propeller, 2 x manual / 1 x electrical bilge pump, 12v/220v electrical system, 1 x 120amp batterie ('01) / 2 x 120amp batteries ('00), shore power, battery charger.

NAVIGATIE

Plastimo Olympic 135 compass, B&G log, echosounder and windset (speed + direction + clause hauled), Shipmate RS8110 VHF, Autohelm ST7000 autopilot, Philips MK9 GPS, Furuno NX-300 navtex, Icom SSB, Panasonic radio/cassette player with cockpitspeakers.

UITRUSTING

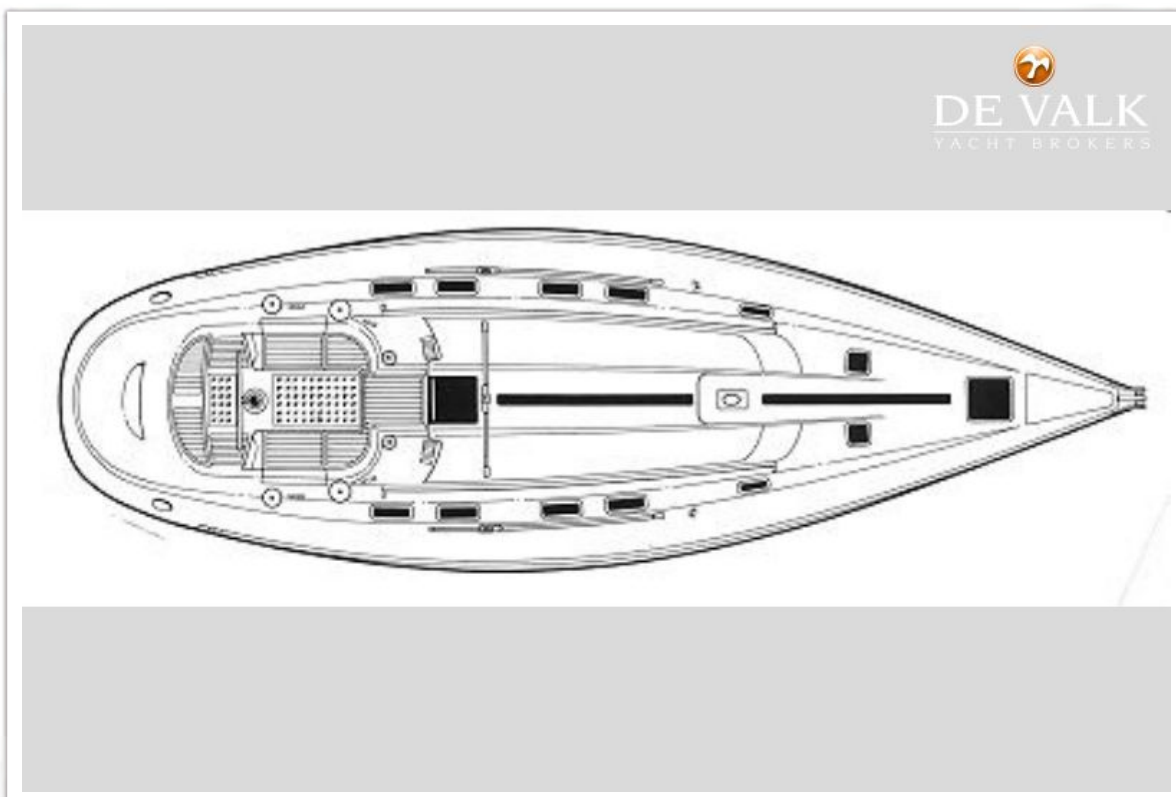
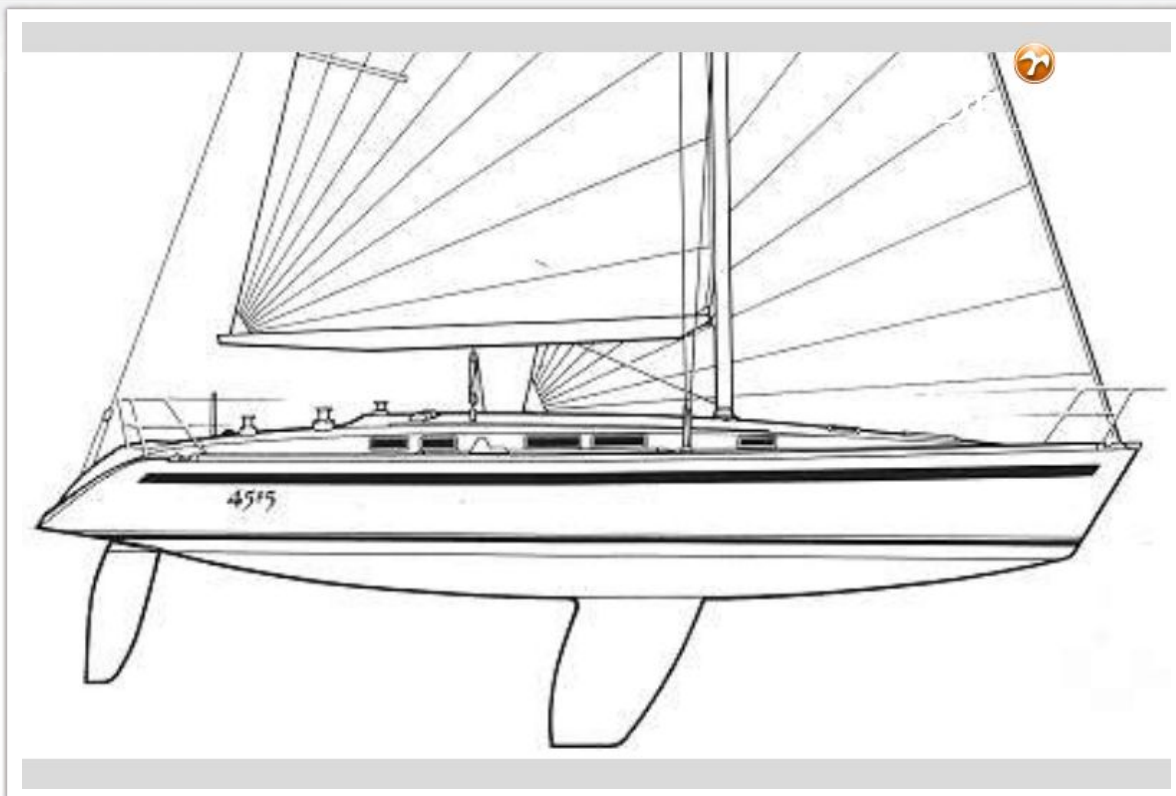
2 x life raft (to be serviced), 2 x life slings, Goyot manual windlass (To be serviced), CQR anchor, boarding ladder, bathing platform.

TUIGAGE

Fractional rigged Sparcraft aluminium mast, two levels of aft-raked spreaders, s.s.Rod standing rigging, adjustable backstay, Facnor, twin gooved headsail furling system , 9 sails: full battened main / 2 x genoa / 1 x genoa II ('02) / 3 x spinnakers, 2 x stormjib, Isomat fixed boomvang, 2x 52ST primary sheetwinches, 2x 46 secondary sheetwinches, 4 x 46ST halyardwinches, all made by Lewmar. Spinnaker pole and Jockey Pole



BENETEAU FIRST 45f5



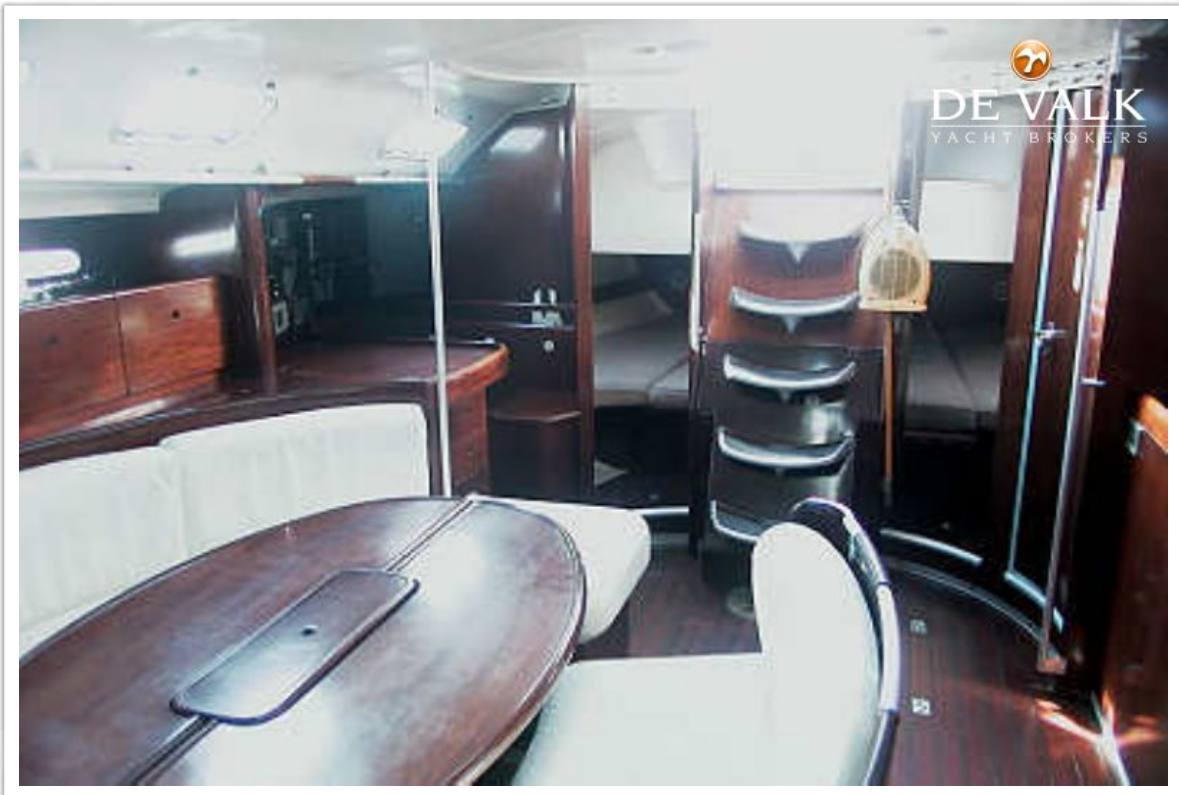
BENETEAU FIRST 45f5



BENETEAU FIRST 45f5



BENETEAU FIRST 45f5



BENETEAU FIRST 45f5



BENETEAU FIRST 45f5

