



DE VALK
YACHT BROKERS



LINSSEN 41 SC



DE VALK
YACHT BROKERS

LINSSEN 41 SC

BROKER'S COMMENTS

"Well known Dutch built motoryacht, LINSSEN 41 SC. Comfortable interior with cherrywood finish. Master cabin with French bed, guest cabin with V berth, 2x bathroom. Bow thruster, stern thruster, Onan generator. Offered in very good condition."

SPECIFICATIES

| | | | |
|-------------------|--|----------------------|---------------------------|
| Afmetingen | 12,55 x 3,85 x 1,35 (m) | Bouwer | Linssen |
| Bouwjaar | 1996 | Hutten | 2 |
| Materiaal | Staal | Slaapplaatsen | 5 |
| Motor(en) | 2 x volvo penta TAMD41H-A diesel VERKOCHT | Pk/Kw | 2 x 145 (pk), 106,58 (kw) |
| | | Ligplaats | bij verkoopkantoor |

CONTACT

| | | | |
|----------------|--|--------------------|----------------------|
| Kantoor | De Valk Loosdrecht | Telefoonnr. | +31 35 582 90 30 |
| Adres | 't Breukeleveense Meentje 6 1231 LM Loosdrecht / Wijdmeren The Netherlands | Fax | +31 (0)35 582 90 39 |
| | | E-mail | loosdrecht@devalk.nl |

DISCLAIMER

Hoewel er uiterste zorg besteed is aan de correctheid, volledigheid en actualiteit van onze informatie kunnen hieraan geen rechten worden ontleend.



ALGEMEEN

Linssen 41 SC
Built, Linssen Yachts B.V.- Maasbracht, The Netherlands.
Built, 1996.
Length, 12,55 m
Beam, 3,85 m.
Draft, 1,35 m.
Headway, 2,85 m.
Displacement, 16 tonnes
Hull, steel.
Hull shape, hard chine.
Decks steel with teak.
Superstructures, steel.
Windows, aluminium frame.
Fuel tank, 2 x 535 litres + day tank.
Fresh water, 2 x 220 litres.
Sump tank, 150 litres.
Steering system, hydraulic.

ACCOMMODATIE

Interior, Cheryy wood with Wenge ornamental lines..
Ceiling, skai panels.
Upholstery, leather blue.
Master cabin with French bed,
Bathroom, ensuite with washbasin and shower, separate toilet.
Guest cabin with V-berths.
Second bathroom.
Galley with worktop and sink.
Cooker, Ceran 4 -burner.
Extractor.
Hot water, boiler
Fridge, 80 litres.
Micro wave, combi
Heating, Eberspacher D5L.
Washer/Dryer.

MOTOR(EN)

Engines, 2 x Volvo Penta 145 hp diesel.
Engine type, TAMD - 41 HD.
Runnig hours: approx 1600.
Gearbox, hydraulic.
Propellor shaft, stainless steel.
Bow thruster, electric.
Stern thruster, electric.
Electric circuit, 12/ 220 Volt.



Shore power.
Generator, Onan 6,5 kW
Battery charger, Mass 12/60/

NAVIGATIE

Auto pilot, Autohelm 7000.
Log, Autohelm Tri data ST 50.
Compass, Autohelm ST 50.
Nvigation, Autohelm Navcenter 300.
VHF, Shipmate RS 8300.

UITRUSTING

Windlass, electric.
Anchor with chain.
Search light.
Cabrio cover.
Windscreen.
Steering chair.
Radio/CD.
Wire screens.



LINSSEN 41 SC



LINSSEN 41 SC



LINSSEN 41 SC



LINSSEN 41 SC



LINSSEN 41 SC



LINSSEN 41 SC



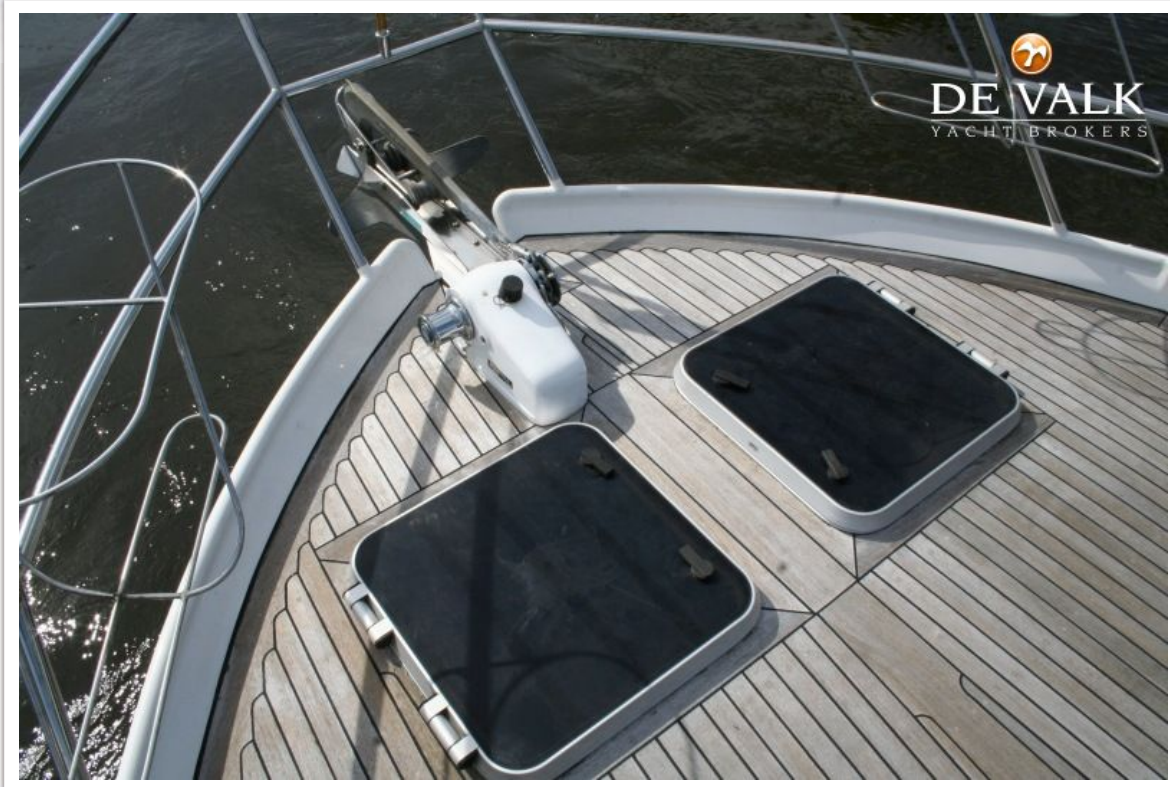
LINSSEN 41 SC



LINSSEN 41 SC



LINSSEN 41 SC



LINSSEN 41 SC



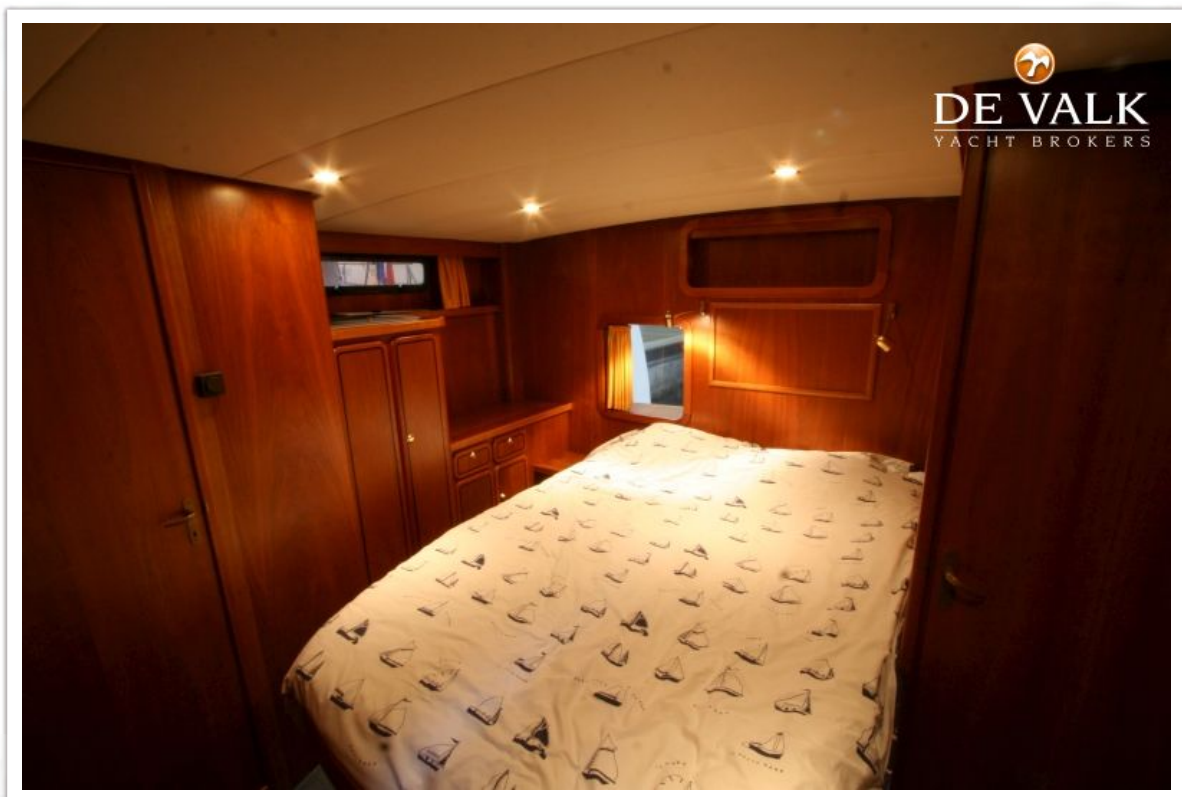
LINSSEN 41 SC



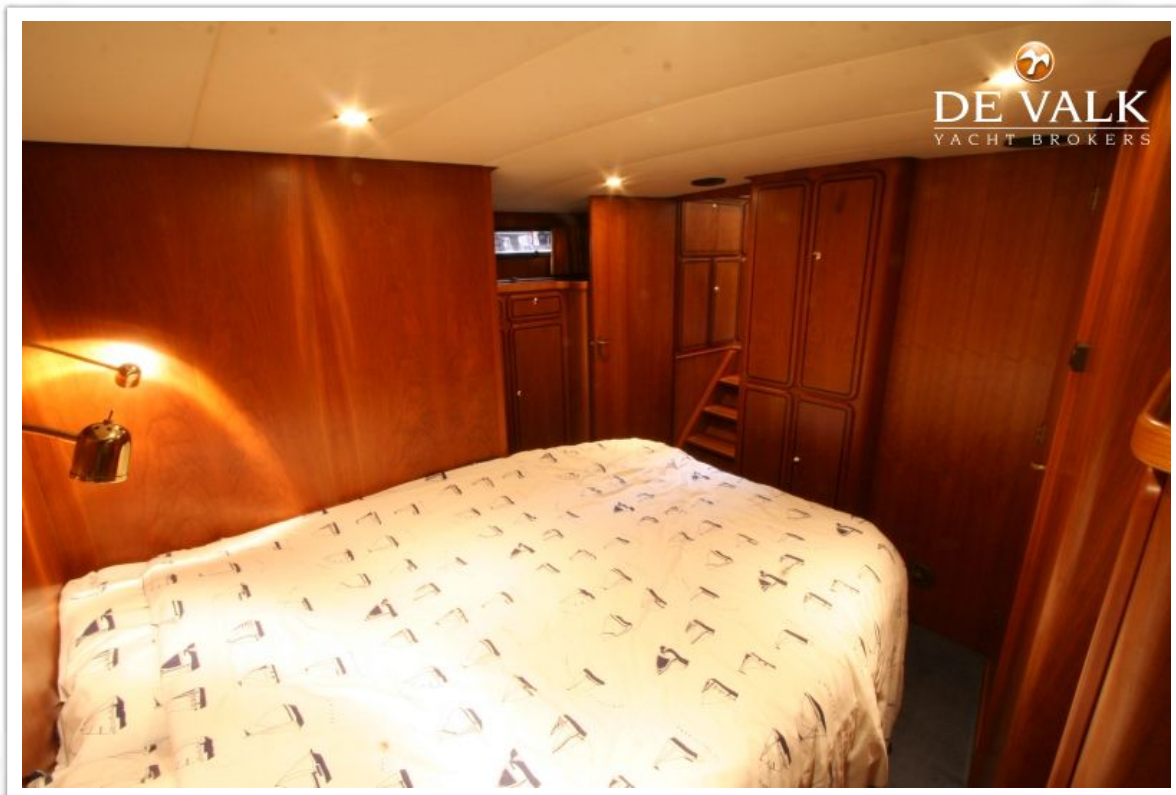
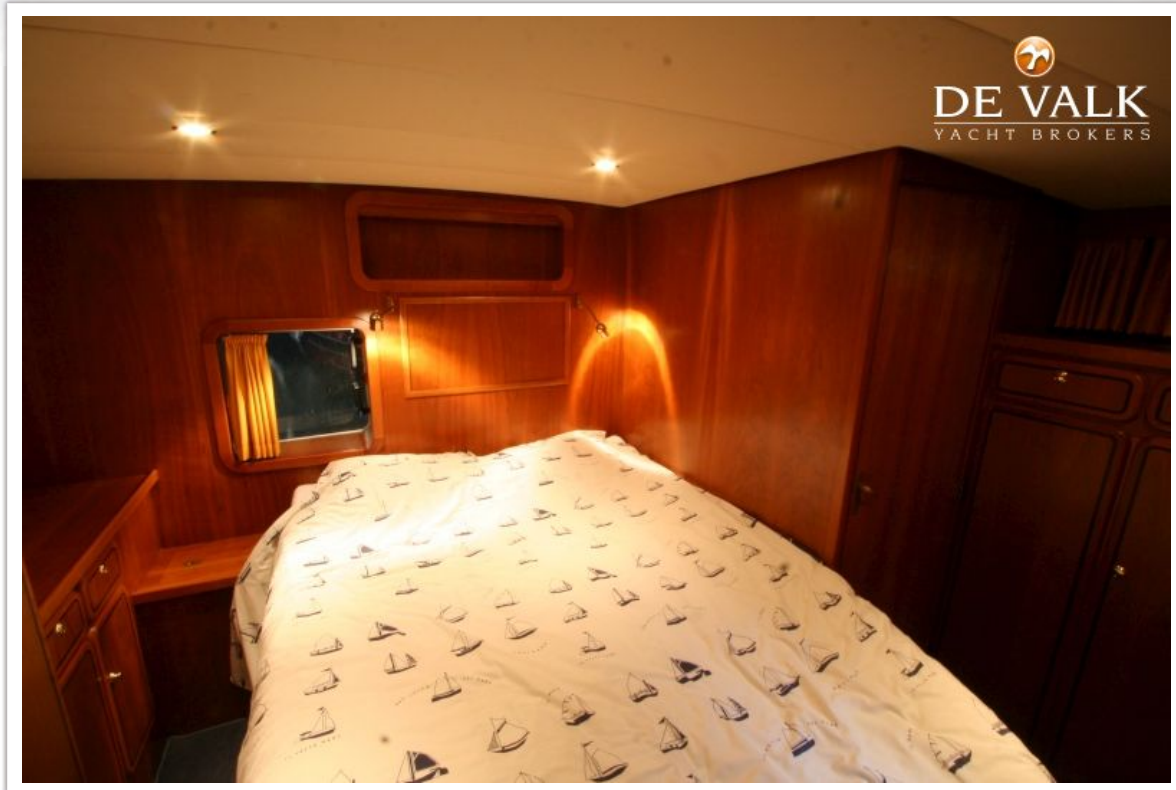
LINSSEN 41 SC



LINSSEN 41 SC



LINSSEN 41 SC



LINSSEN 41 SC



LINSSEN 41 SC



LINSSEN 41 SC



LINSSEN 41 SC

