



DE VALK
YACHT BROKERS



BUETZFLETH 48,5



DE VALK
YACHT BROKERS

BUETZFLETH 48,5

BROKER'S COMMENTS

"BUETZFLETH 48,5 is a purposeful looking M/Y with traditional lines & design. She is a strongly built vessel with good seakeeping reputation & displays very high quality craftsmanship. Her attractive lines give that classic look and her beautiful wood interior (rarely found on boats built today) does not disappoint! She benefits from a good maintenance in her current ownership."

Sofia Iliia-Salvanou

SPECIFICATIES

Afmetingen	14,96 x 4,75 x 1,30 (m)	Bouwer	Bootswerft-Brauer-Buetzfleth GmbH & Co.KG
Bouwjaar	1993	Hutten	1
Materiaal	Polyester	Slaapplaatsen	4
Motor(en)	2 x MAN D2866LE401 diesel	Pk/Kw	2 x 600 (pk), 441 (kw)
Vraagprijs	EUR 154.000 (btw: betaald)	Ligplaats	niet op verkoopkantoor

CONTACT

Kantoor	De Valk Corfu	Telefoonnr.	(+30) 266 111 8095
Adres	New Port of Corfu, near Gouvia Marina 490 83 Corfu Greece	Fax	+302661118095
		E-mail	corfu@devalk.nl

DISCLAIMER

Hoewel er uiterste zorg besteed is aan de correctheid, volledigheid en actualiteit van onze informatie kunnen hieraan geen rechten worden ontleend.



ALGEMEEN

Model	BUETZFLETH 48,5
Type	motorjacht
Lengte (m)	14,96
Breedte (m)	4,75
Diepgang (m)	1,30
Bouwjaar	1993
Gebouwd door	Bootswerft-Brauer-Buetzfleth GmbH &Co.KG
Land	Duitsland
CE norm	NA
Romp materiaal	polyester
Romp kleur	wit
Dek materiaal	teak
Afwerking opbouw	teak
Afwerking kuip	teak
Brandstoftank (liter)	2400
Inhoudsmeter (brandstoftank)	ja
Drinkwatertank (liter)	1000
Inhoudsmeter (drinkwatertank)	ja
Vuilwatertank (liter)	200
Stuurwiel	ja
Binnen stuurstand	ja

ACCOMMODATIE

Hutten	1
Slaapplaatsen	4
Deksalon	ja
Verwarming	Eberspaecher 8KW
Koelkast	X 2
Vriezer	X 1



Warmwatersysteem	ja
Waterdruksysteem	ja
Hand en/of voetpomp	ja
Lengte bed (m)	2 m
Kledingkast	ja
Badkamer	ja
Toilet	ja
Wasbak	ja
Douche	ja

MOTOR(EN)

Aantal motoren	2
Merk	MAN
Type	D2866LE401
Pk	600
kW	441
Brandstof	diesel
Motoruren	788
Schroefas afdichting	ja
Boegschroef	HYDRAULIC
Keerkoppeling	ZF A311
Schroefbladen	5
Materiaal schroefas	INOX
Elektrische lenspomp	ja
Elektrische installatie	ja
Generator	FISCHER PANDA 18 KW
Accu's	ja
Startaccu	2 X 140 AH
Lichtaccu	540 AH
Accu monitor	MAGNETRONIC DCC 4000



Acculader	X 3
Zonnecellen	2 X 245 WP
Trimkleppen	ELECTRIC

NAVIGATIE

Kompas	Autohelm ST 50
Kompas op flybridge	Plastimo Horizon 135
Dieptemeter	Autohelm ST 50
3d dieptemeter	Multi Autohelm ST 50
Log	Autohelm ST 50
Windmeetset	Autohelm Tridata ST 50
Repeaters	Autohelm ST 50
Marifoon	Sailor C4901 Compact HF SSB R2122
Handmarifoon	Icom
Autopiloot	Autohelm ST 7000
Roerstand aanwijzer	ja
Radar	Furuno
GPS	Furuno GPS Navigator GP70, Autohelm Navcenter, Raymarine RS130
Plotter	Raymarine E140W, Raymarine E7
Navtex	NAVTEX 2, Meteostar
Radio ontvanger	2 X Pionier
Navigatieverlichting	ja

UITRUSTING

Zwemplatform	ja
Zwemtrap	ja
Loopplank	ja
Dekdouche	ja
Anker	ja
Ankerkettina	75 m



Ketting teller	Magnetronic AKZ 200
Ankerlier	Lofrans Falkon
Ankerlier bij spiegel	Manual
Bijboot	Zodiac Cadet 250 Compact
Buitenboordmotor	Yamaha F6 CMHS, 6 HP
Buitenboordmotorsteun	ja
Radio-cd speler	X 2 Pioneer



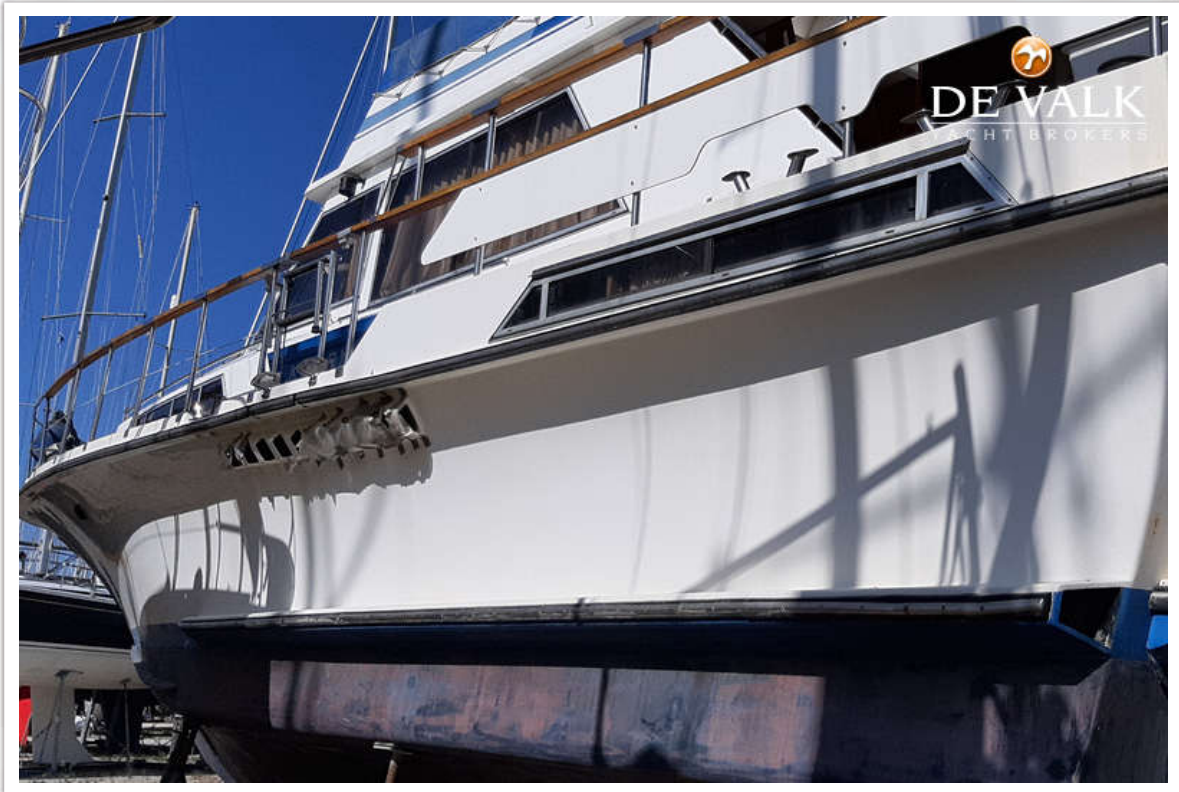
BUETZFLETH 48,5



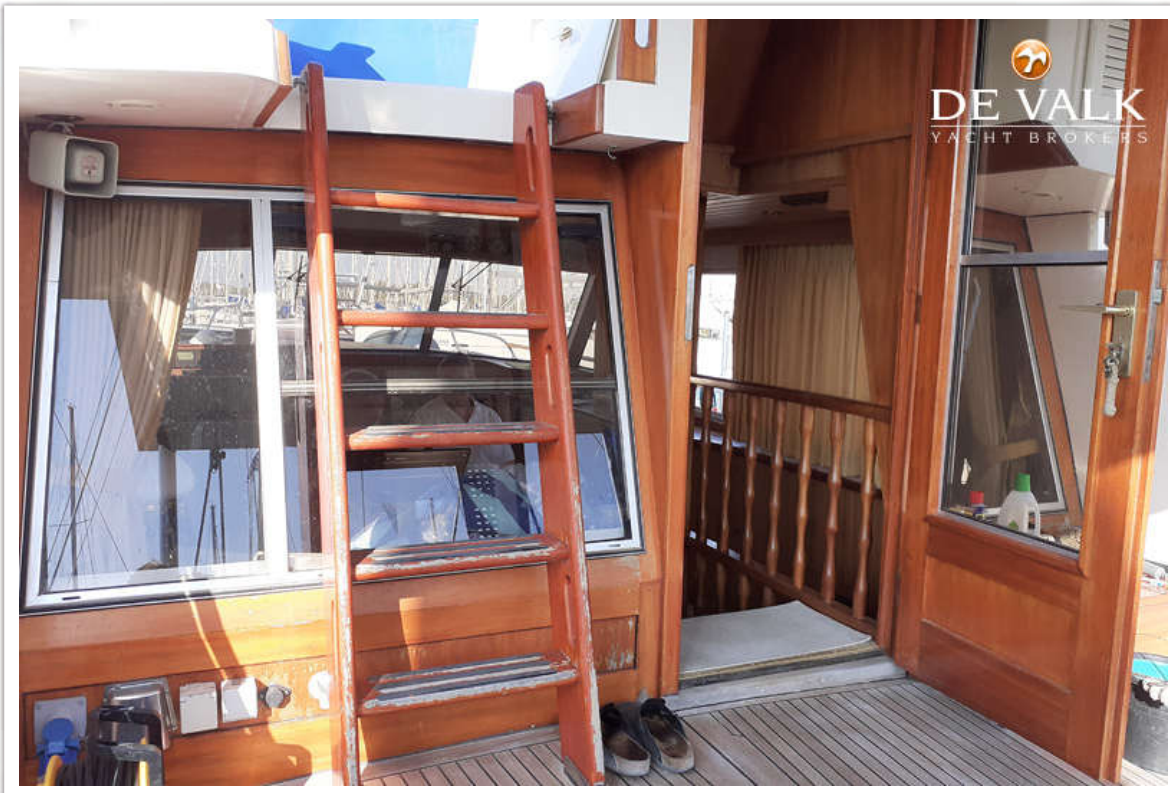
BUETZFLETH 48,5



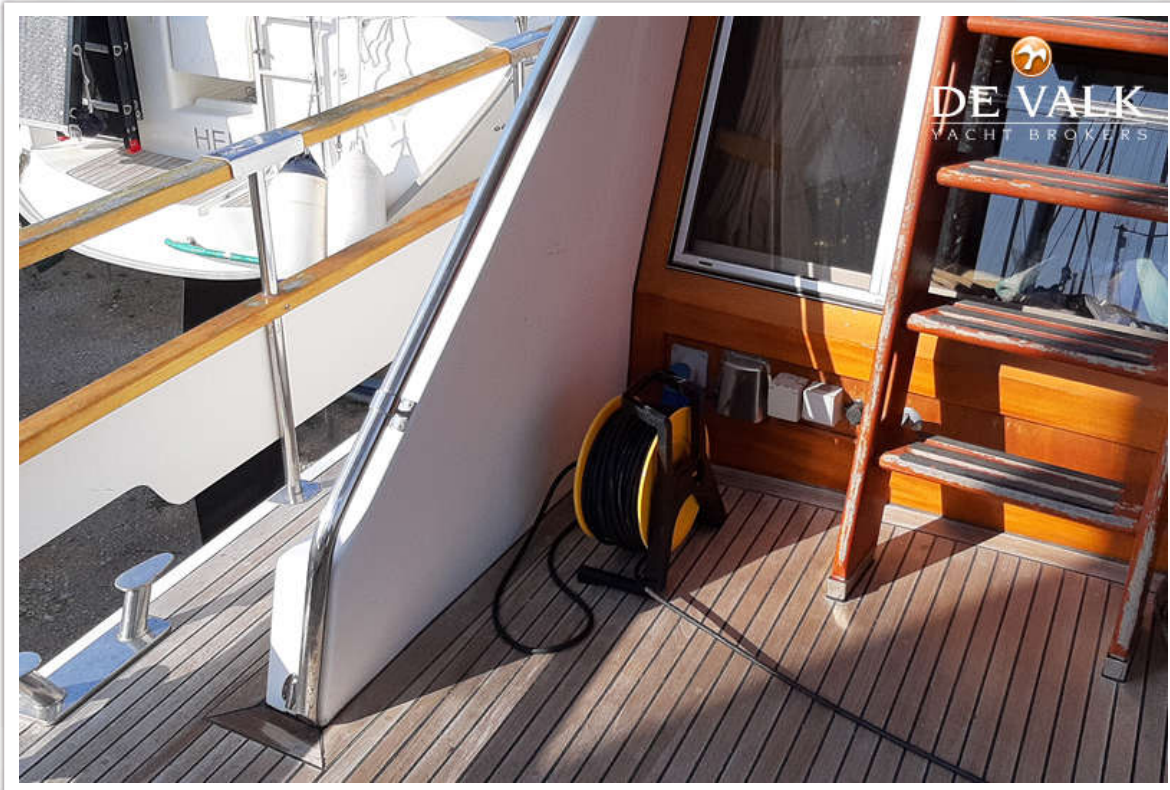
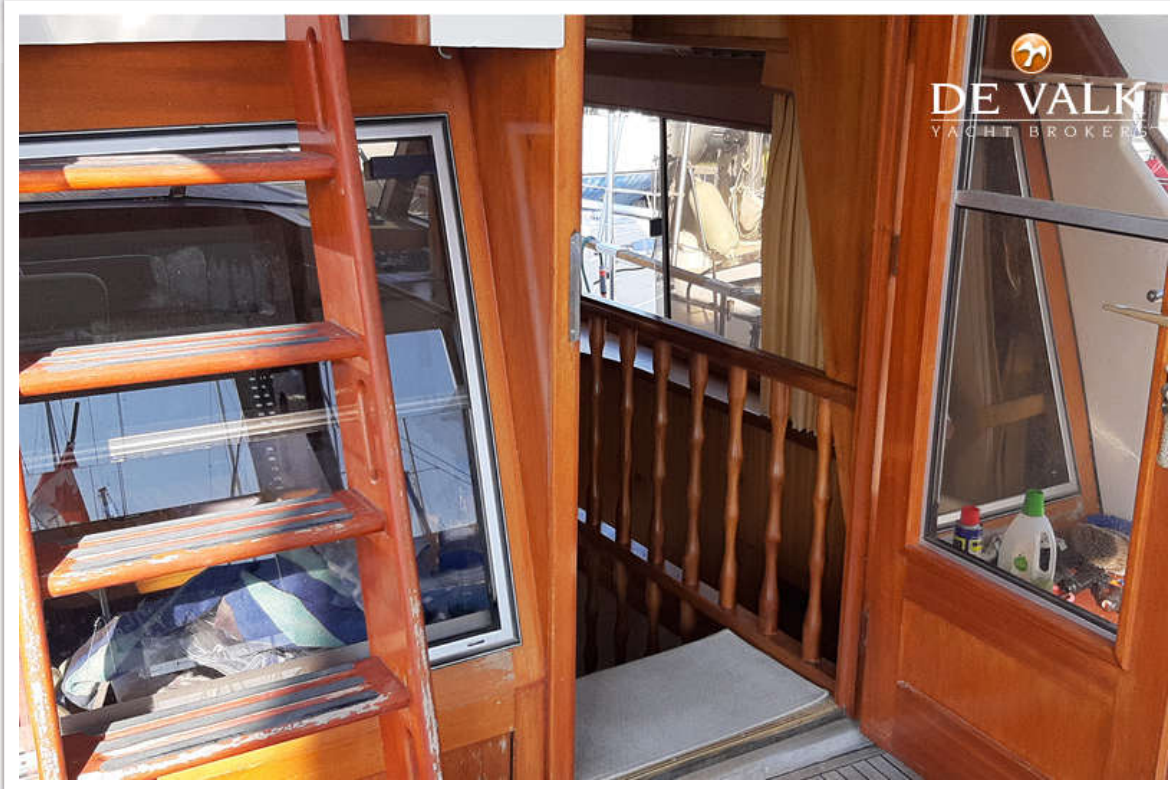
BUETZFLETH 48,5



BUETZFLETH 48,5



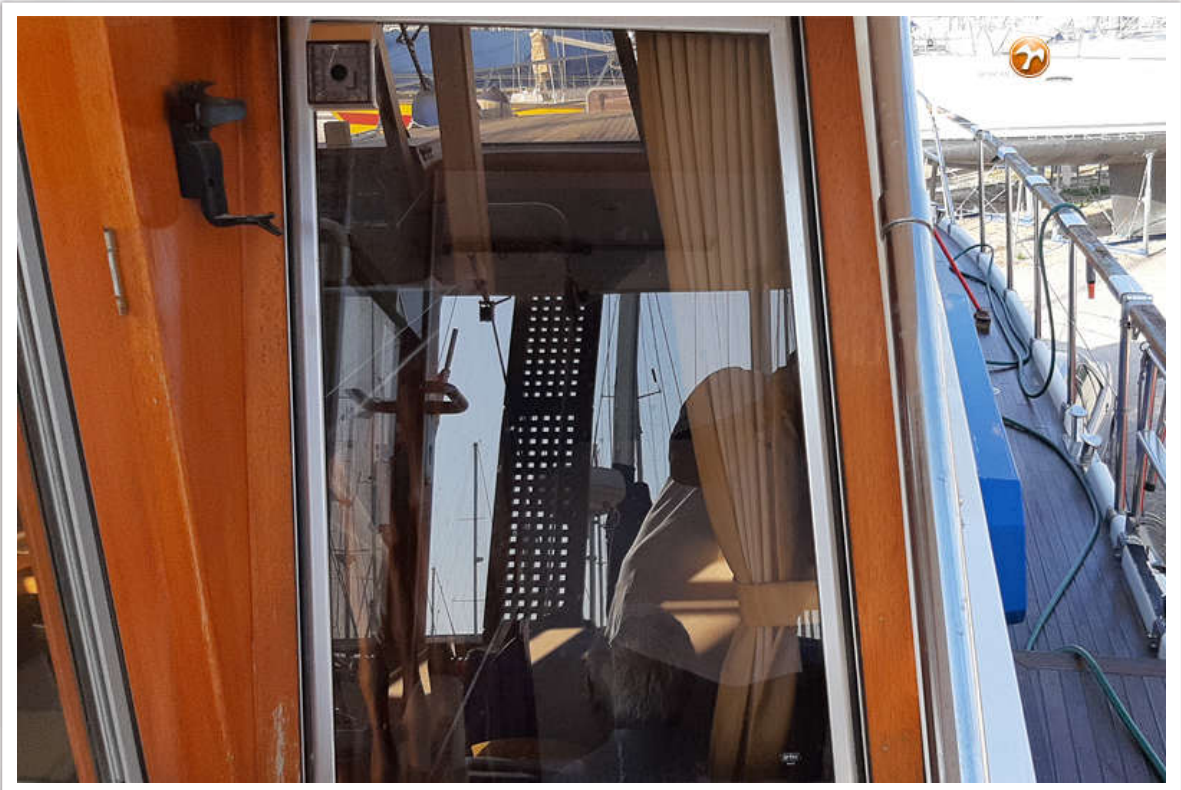
BUETZFLETH 48,5



BUETZFLETH 48,5



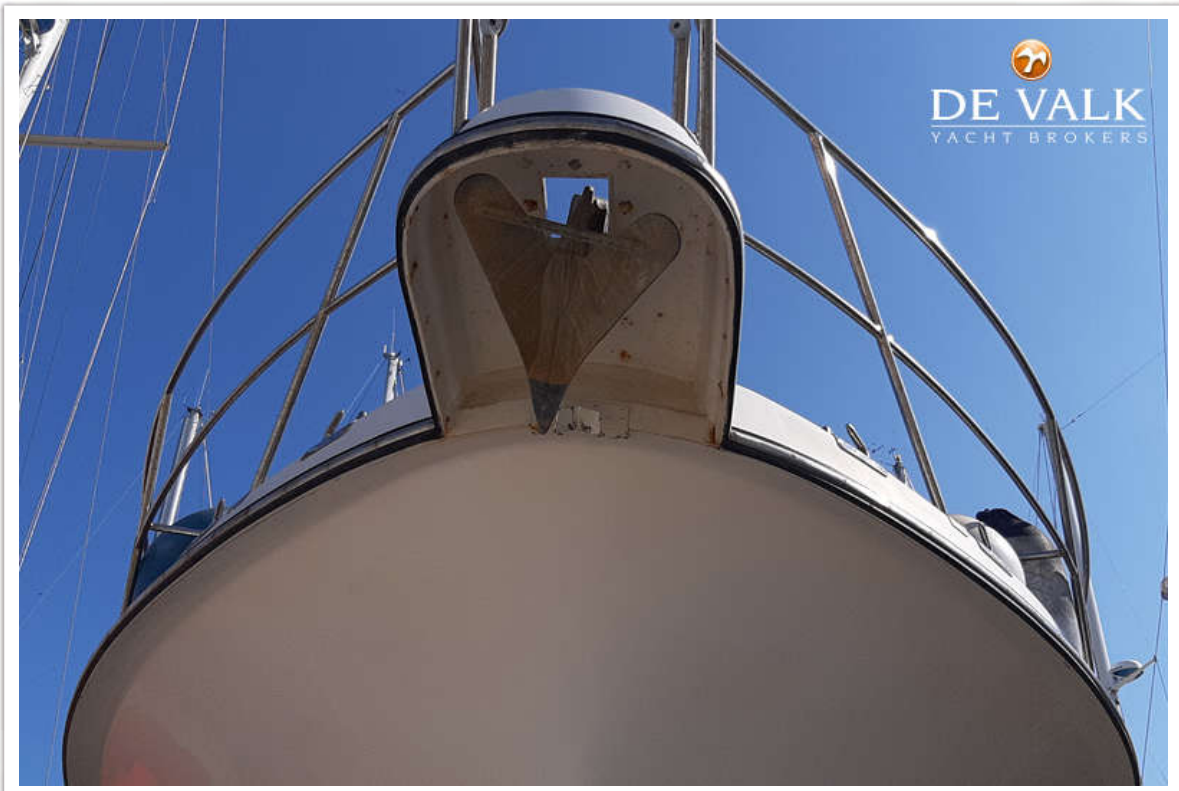

DE VALK
YACHT BROKERS



BUETZFLETH 48,5



BUETZFLETH 48,5



BUETZFLETH 48,5



BUETZFLETH 48,5



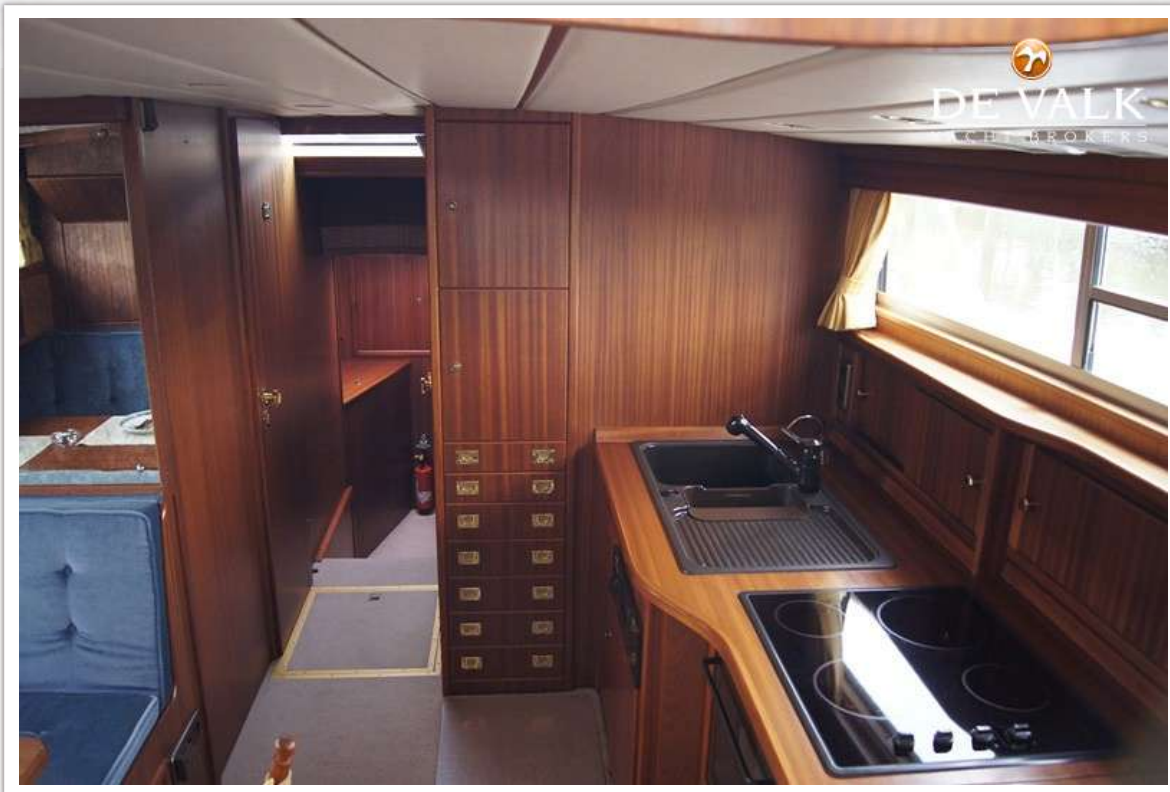
BUETZFLETH 48,5



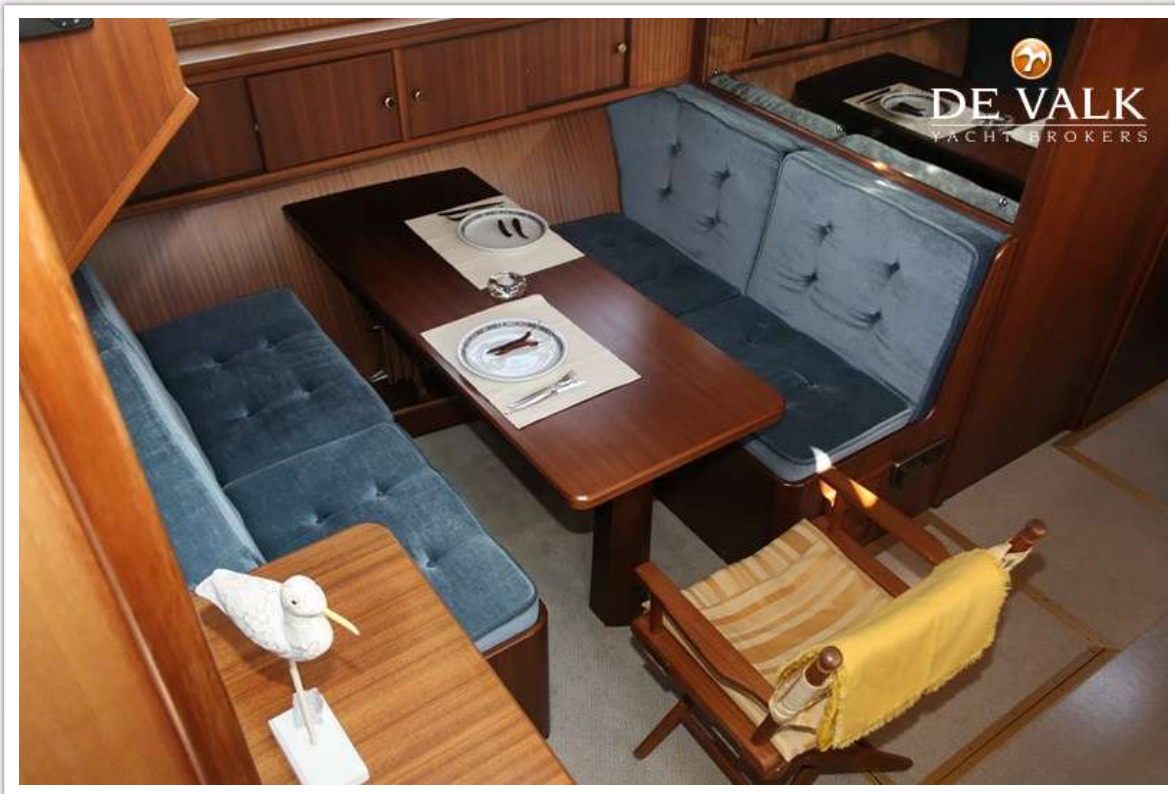
BUETZFLETH 48,5



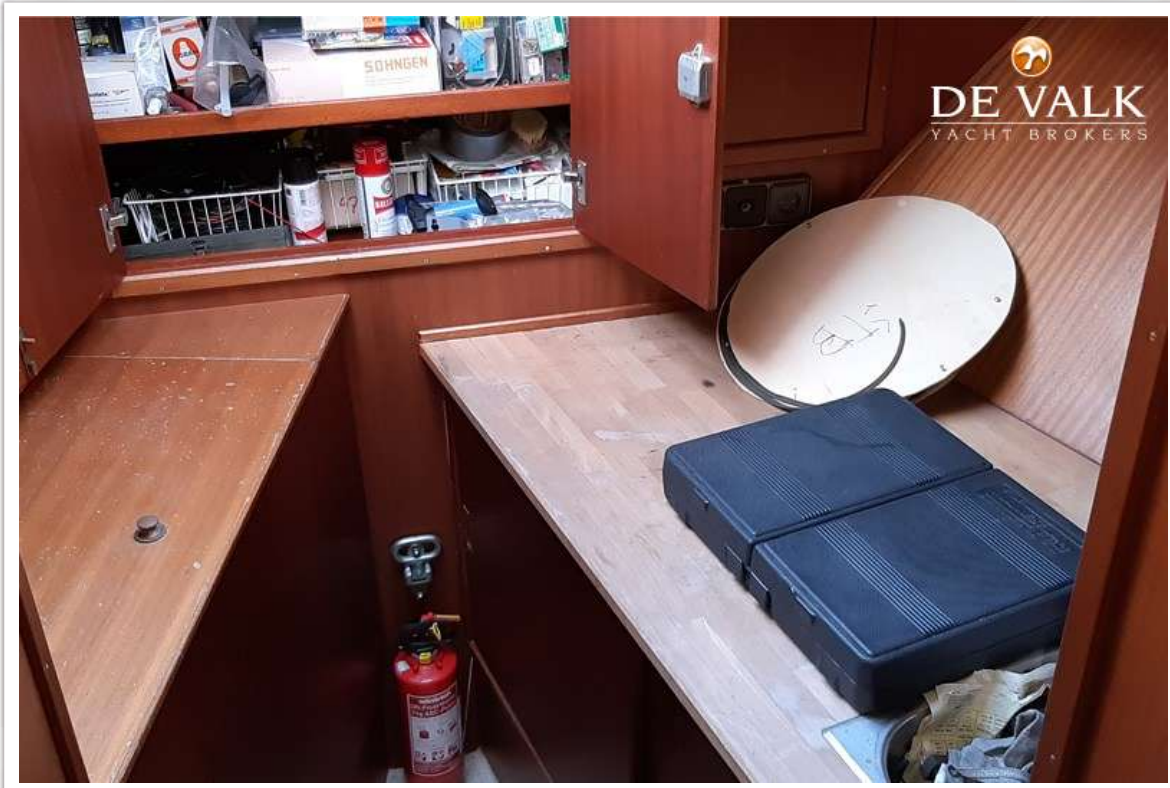
BUETZFLETH 48,5



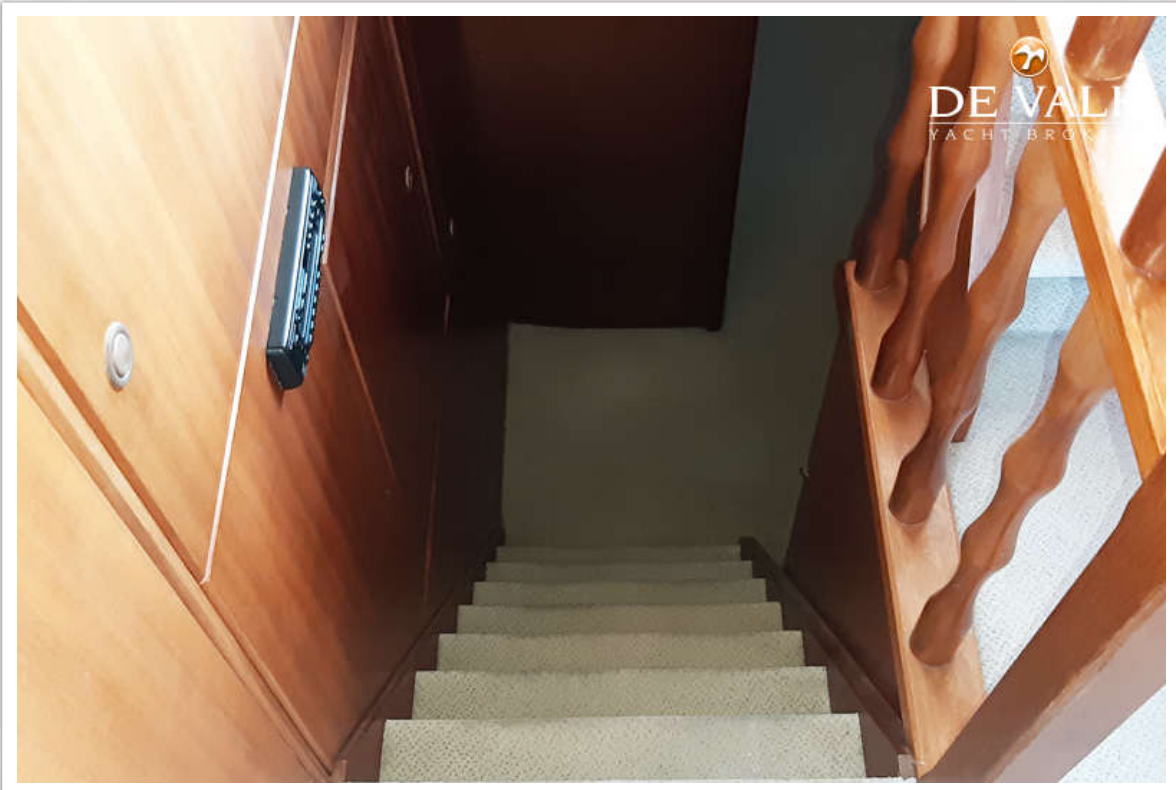
BUETZFLETH 48,5



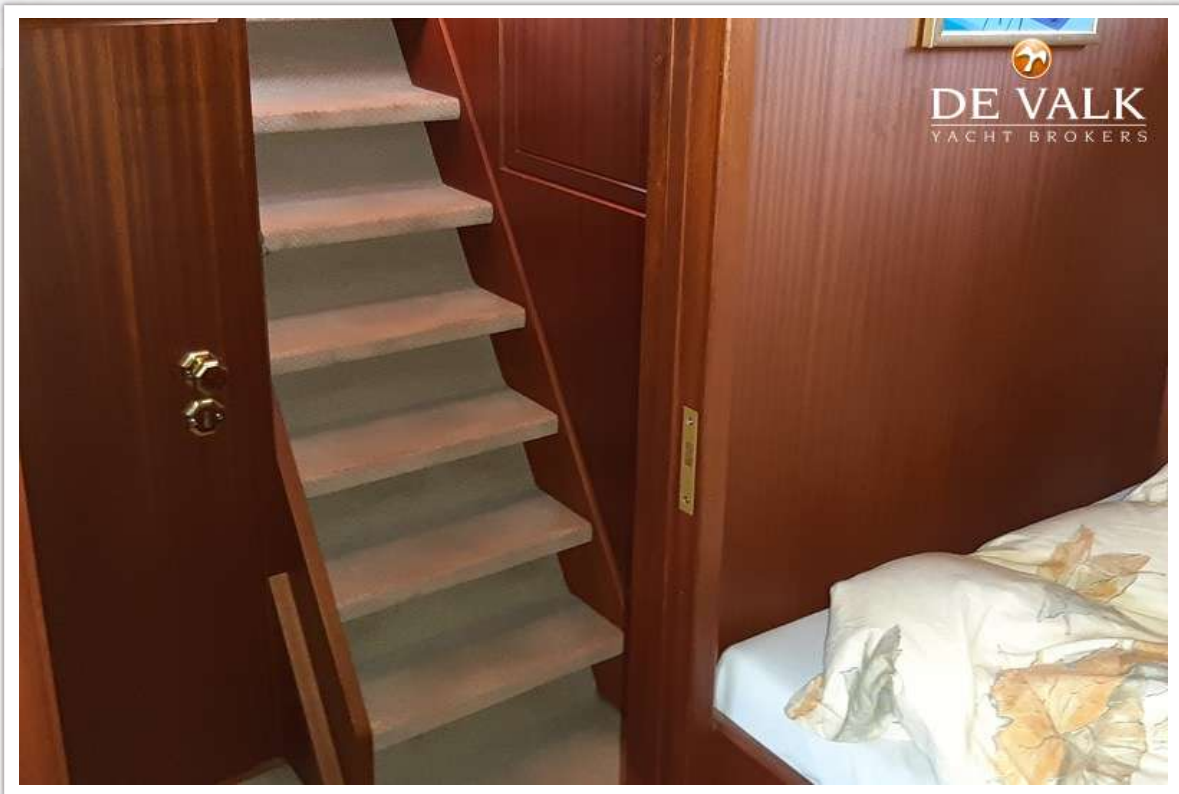
BUETZFLETH 48,5



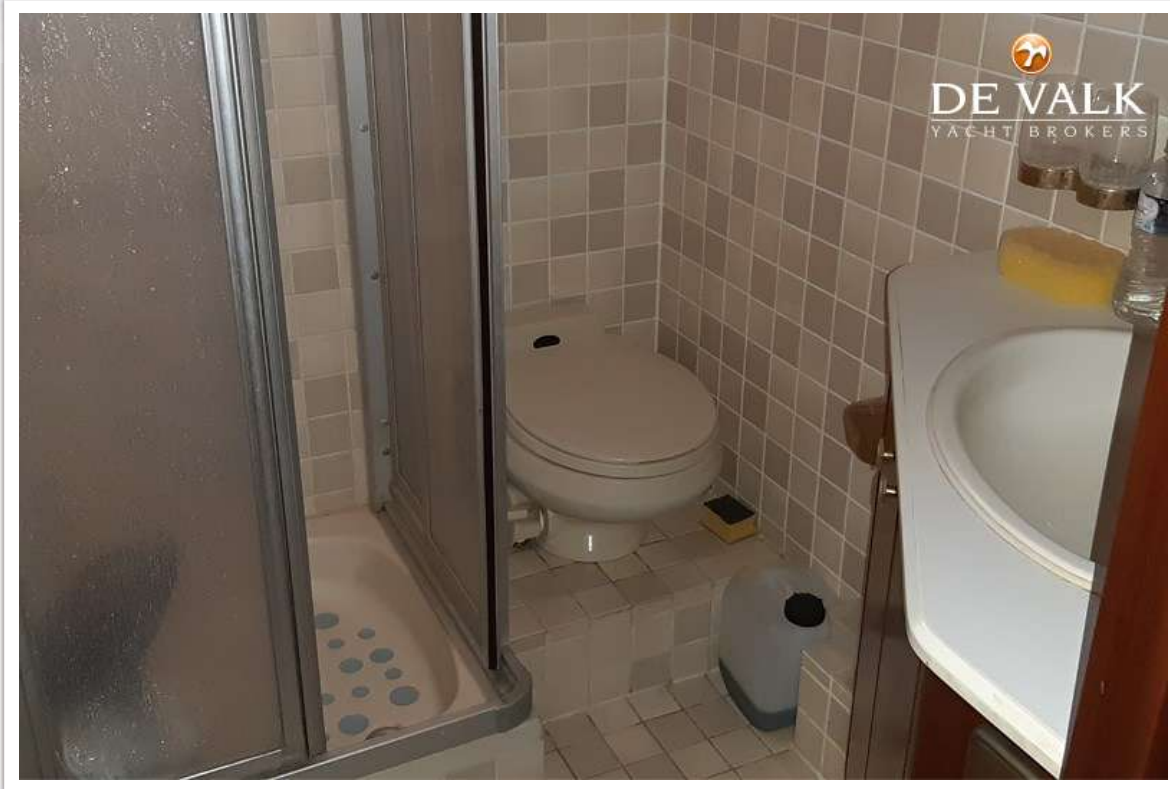
BUETZFLETH 48,5

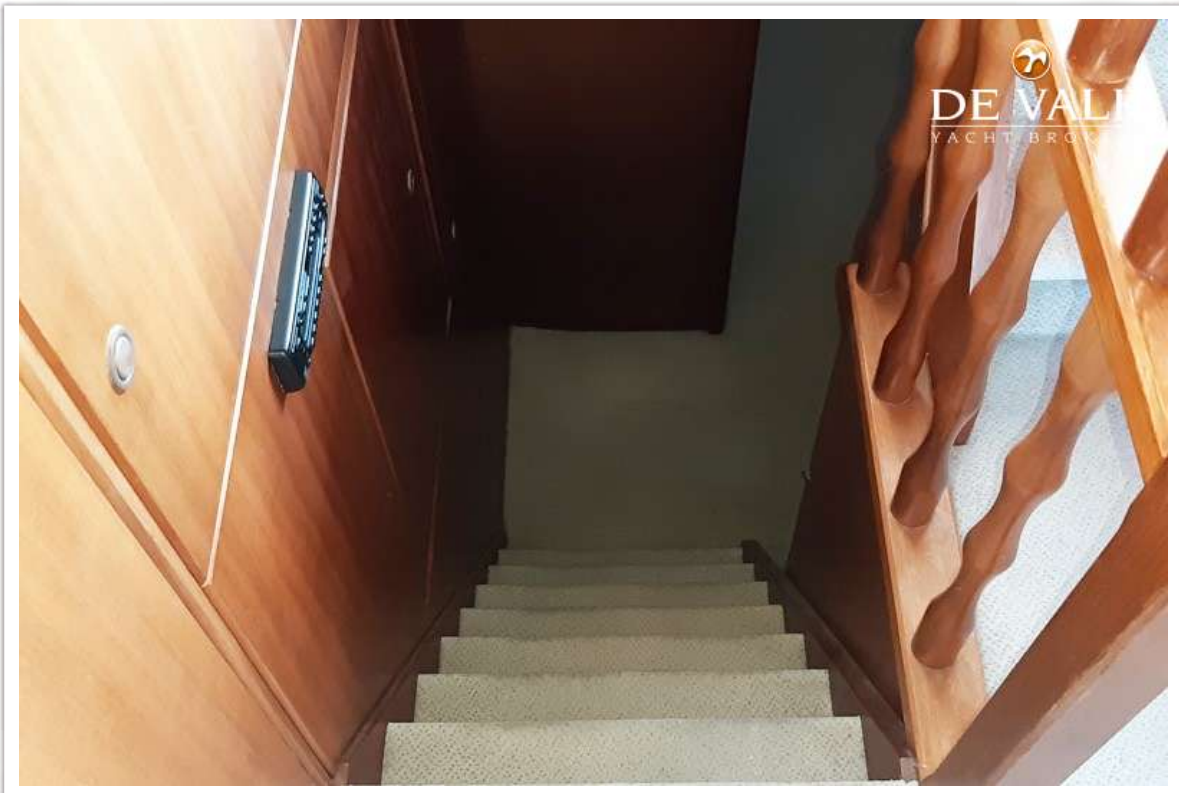
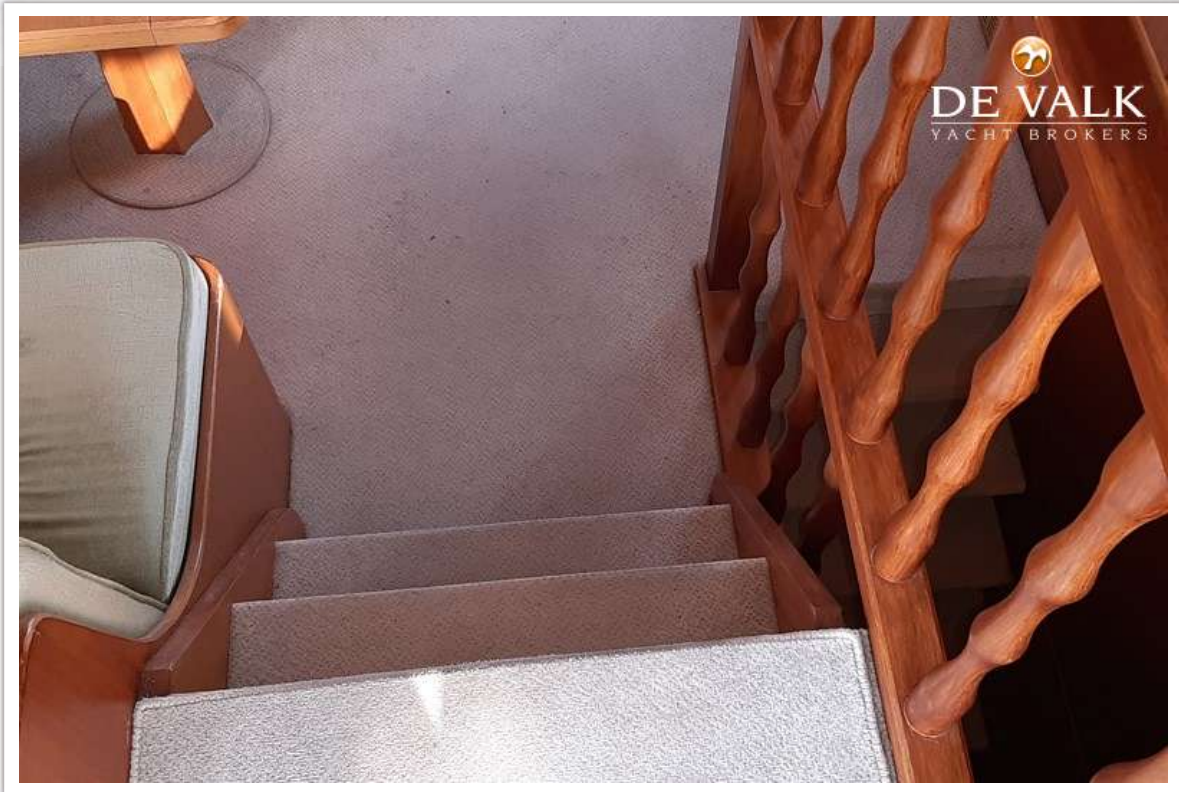


BUETZFLETH 48,5



BUETZFLETH 48,5





BUETZFLETH 48,5



BUETZFLETH 48,5

