



DE VALK  
YACHT BROKERS



## ABSOLUTE 52 FLY



DE VALK  
YACHT BROKERS

# ABSOLUTE 52 FLY

## VAN DE MAKELAAR

This Absolute is spacious on the aft deck, fly bridge and bow area. You will find an incorporated hide away grill on the stern in order to grill from the hydraulic bathing platform. The salon with an open galley, between the dining area and aft deck, has an intelligent layout, and a simple and light design. The 3 cabins are spacious in design and layout. All the systems are fully revised as per service books. You will find the vessel turn key ready for the season. Fully equipped with water maker, sea keeper and much more. As new. VAT to be added when buying private.

*Tue Simon Fasting*

## SPECIFICATIES

|                   |                                   |                      |                              |
|-------------------|-----------------------------------|----------------------|------------------------------|
| <b>Afmetingen</b> | 15.90 x 4.65 x 2.40 (m)           | <b>Bouwer</b>        | Absolute yachts              |
| <b>Bouwjaar</b>   | 2017                              | <b>Hutten</b>        | 3                            |
| <b>Materiaal</b>  | Polyester                         | <b>Slaapplaatsen</b> | 6                            |
| <b>Motor(en)</b>  | 2 x Volvo Penta D8 IPS 700 diesel | <b>Pk/Kw</b>         | 2 x 410.00 (pk), 301.35 (kw) |
| <b>Vraagprijs</b> | verkocht (BTW )                   | <b>Ligplaats</b>     | bij verkoopkantoor           |

## CONTACT

|                |   |                 |                     |
|----------------|---|-----------------|---------------------|
| <b>Kantoor</b> | De Valk Barcelona                         | <b>Telefoon</b> | +34 932 202 825     |
| <b>Adres</b>   | Barcelona region<br>08392 Barcelona<br>ES | <b>E-mail</b>   | barcelona@devalk.nl |

## DISCLAIMER

Hoewel er uiterste zorg besteed is aan de correctheid, volledigheid en actualiteit van onze informatie kunnen hieraan geen rechten worden ontleend.



# ABSOLUTE 52 FLY

## ALGEMEEN

|                                      |                      |
|--------------------------------------|----------------------|
| <b>Model</b>                         | ABSOLUTE 52 FLY      |
| <b>Type</b>                          | motorjacht           |
| <b>Lengte (m)</b>                    | 15,90                |
| <b>Breedte (m)</b>                   | 4,65                 |
| <b>Diepgang (m)</b>                  | 2,40                 |
| <b>Bouwjaar</b>                      | 2017                 |
| <b>Gebouwd door</b>                  | Absolute yachts      |
| <b>Waterverplaatsing (t)</b>         | 28                   |
| <b>Romp materiaal</b>                | polyester            |
| <b>Afwerking dek</b>                 | teak                 |
| <b>Antifouling (jaar)</b>            | 2021                 |
| <b>Raamlijsten</b>                   | roestvast staal      |
| <b>Raammateriaal</b>                 | normaal glas         |
| <b>Flybridge</b>                     | Yes                  |
| <b>Brandstoftank (liter)</b>         | roestvast staal 1600 |
| <b>Inhoudsmeter (brandstoftank)</b>  | Yes                  |
| <b>Drinkwatertank (liter)</b>        | roestvast staal 500  |
| <b>Inhoudsmeter (drinkwatertank)</b> | Yes                  |
| <b>Vuilwatertank (liter)</b>         | 150                  |
| <b>Inhoudsmeter (vuilwatertank)</b>  | Yes                  |
| <b>Vuilwatertank afvoer</b>          | pomp                 |
| <b>Stuurwiel</b>                     | hydraulisch          |

## ACCOMMODATIE

|                                |        |
|--------------------------------|--------|
| <b>Hutten</b>                  | 3      |
| <b>Slaapplaatsen</b>           | 6      |
| <b>Bemanningshut</b>           | 1      |
| <b>Bemanning slaapplaatsen</b> | 2      |
| <b>Interieur</b>               | berken |
| <b>Vloer</b>                   | parket |



# ABSOLUTE 52 FLY

|                      |                          |
|----------------------|--------------------------|
| Airco                | airco omkeerbaar         |
| Kaartentafel         | Yes                      |
| Achterkajuit         | Yes                      |
| Aanrechtblad         | corian                   |
| Spoelbak             | roestvast staal          |
| Kooktoestel          | elektrisch EuroKera      |
| Combi magnetron/oven | Bosch                    |
| Koelkast             | Large Vitrifrigo         |
| Vriezer              | Vitrifrigo               |
| Wijnkoeler           | Vitrifrigo               |
| Warmwatersysteem     | via CV                   |
| Waterdruksysteem     | elektrisch               |
| Vaatwasser           | Bosch Silence Plus       |
| Waterkoker           | GFerrari                 |
| Ijsblokjesmachine    | Vitrifrigo               |
| Koffiezetapparaat    | Krups                    |
| Kommaliewant         | Included                 |
| Eigenaarshut         | tweepersoonsbed          |
| Kledingkast          | hangend/lades/legplanken |
| Badkamer             | en suite                 |
| Toilet Systeem       | elektrisch               |
| Gastenhut 1          | tweepersoonsbed          |
| Kledingkast          | hangend/lades/legplanken |
| Badkamer             | gedeeld                  |
| Gastenhut 2          | twee enkele bedden       |
| Kleerkast            | hangend/lades/legplanken |
| Badkamer             | gedeeld                  |
| Was/droog combinatie | Yes                      |

## MOTOR(EN)

|                |   |
|----------------|---|
| Aantal motoren | 2 |
|----------------|---|



# ABSOLUTE 52 FLY

|                               |                                   |
|-------------------------------|-----------------------------------|
| <b>Merk</b>                   | Volvo Penta                       |
| <b>Type</b>                   | D8 IPS 700                        |
| <b>Pk</b>                     | 410                               |
| <b>kW</b>                     | 301,35                            |
| <b>Brandstof</b>              | diesel                            |
| <b>Geïnstalleerd in jaar</b>  | 2017                              |
| <b>Gereviseerd in jaar</b>    | 2031                              |
| <b>Maximale snelheid (kn)</b> | 28                                |
| <b>Kruissnelheid (kn)</b>     | 22                                |
| <b>Verbruik (ltr/uur)</b>     | 160                               |
| <b>Motoruren</b>              | 890                               |
| <b>Koelsysteem motor</b>      | direct buitenwater                |
| <b>Motorbediening</b>         | elektrisch                        |
| <b>Keerkoppeling</b>          | mechanisch                        |
| <b>Boegschroef</b>            | elektrisch                        |
| <b>Uitlaatsysteem</b>         | watergekoeld                      |
| <b>Materiaal Schroefas</b>    | roestvast staal                   |
| <b>Elektrische lenspomp</b>   | Yes                               |
| <b>Bilge alarm</b>            | Yes                               |
| <b>Generator</b>              | natte uitlaat Mase IS 12B -10,2KW |
| <b>Draaiuren generator</b>    | 2190                              |
| <b>Accu's</b>                 | New 2020                          |
| <b>Startaccu</b>              | New 2021                          |
| <b>Omvormer</b>               | Kunzel New 2020                   |
| <b>Walstroom</b>              | met kabel                         |
| <b>Watermaker</b>             | Idramar                           |
| <b>Stabilisatoren</b>         | 0-speed Seakeeper 6               |
| <b>Trimkleppen</b>            | Hydraulic                         |

## NAVIGATIE

|               |         |
|---------------|---------|
| <b>Kompas</b> | Ritchie |
|---------------|---------|



# ABSOLUTE 52 FLY

|                       |                    |
|-----------------------|--------------------|
| Electrisch kompas     | Included           |
| Multi control display | Garmin             |
| Dieptemeter           | Garmin             |
| Marifoon              | Garmin GHS 10i     |
| Autopiloot            | Volvo Penta        |
| Radar                 | Garmin             |
| GPS                   | Garmin             |
| Plotter/GPS           | Garmin GpsMap 7416 |
| AIS ontvanger         | Garmin             |
| AIS transponder       | Garmin             |
| Epirb                 | Included           |
| Navigatieverlichting  | Yes                |

## UITRUSTING

|                    |                        |
|--------------------|------------------------|
| Bimini             | On fly deck            |
| Wintertent         | For fly bridge control |
| Zwemplatform       | Hydraulic              |
| Zwemtrap           | roestvast staal Yes    |
| Loopplank          | Bezensoni              |
| Dekdouche          | Yes                    |
| Anker              | Delta 40 kg            |
| Ketting teller     | Yes                    |
| Ankerlier          | elektrisch             |
| Kaapstander        | 2 electrical           |
| Zeereeling         | roestvast staal        |
| Handgreep (opbouw) | roestvast staal        |
| Reddingsvlot       | container              |
| Zwemvesten         | Included               |
| Stootkussens       | Included               |
| TV                 | Samsung Flat screen    |
| TV-ontvanger       | Cruiser Digital        |



# ABSOLUTE 52 FLY

Radio

Fusion

DVD speler

Samsung

I-Pod aansluiting

Fusion

Kuipspeakers

Fusion

Speakers in salon

Fusion

Extra info

BBQ on the aft platform

Extra info

Extra fridge on fly bridge



# ABSOLUTE 52 FLY





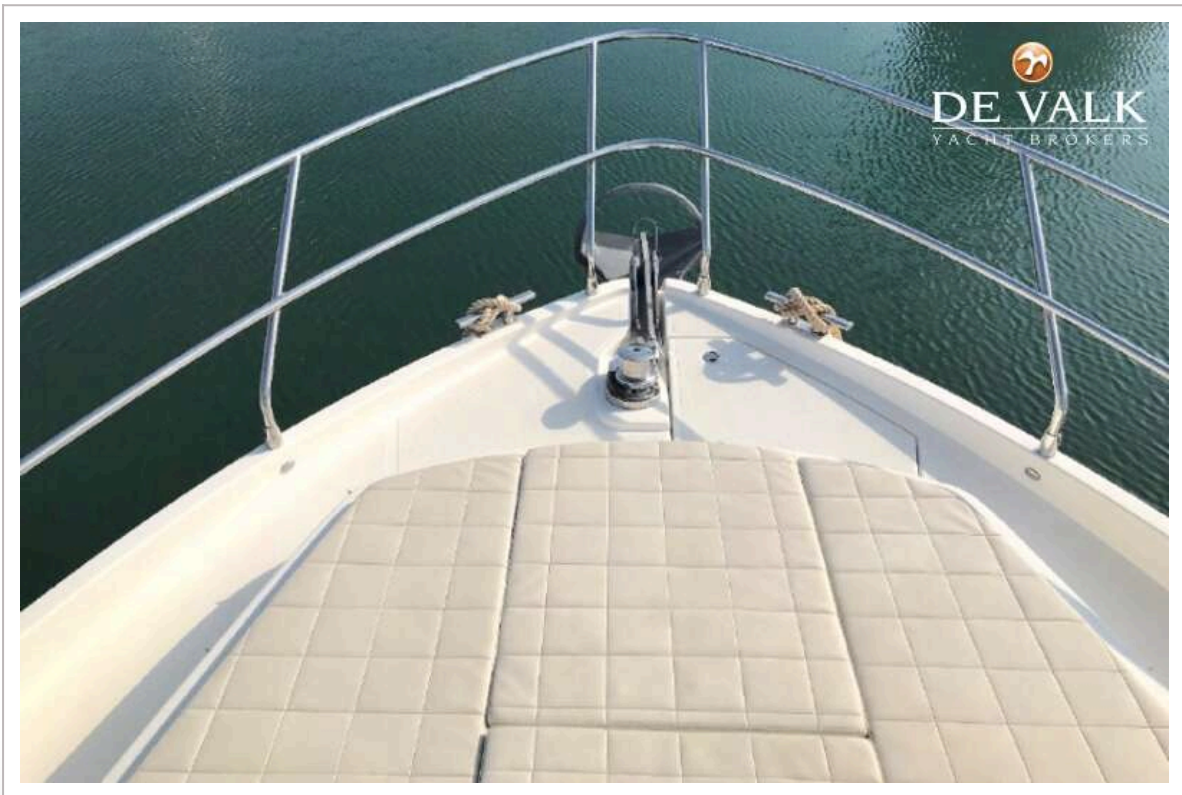
# ABSOLUTE 52 FLY



# ABSOLUTE 52 FLY



# ABSOLUTE 52 FLY



# ABSOLUTE 52 FLY



# ABSOLUTE 52 FLY



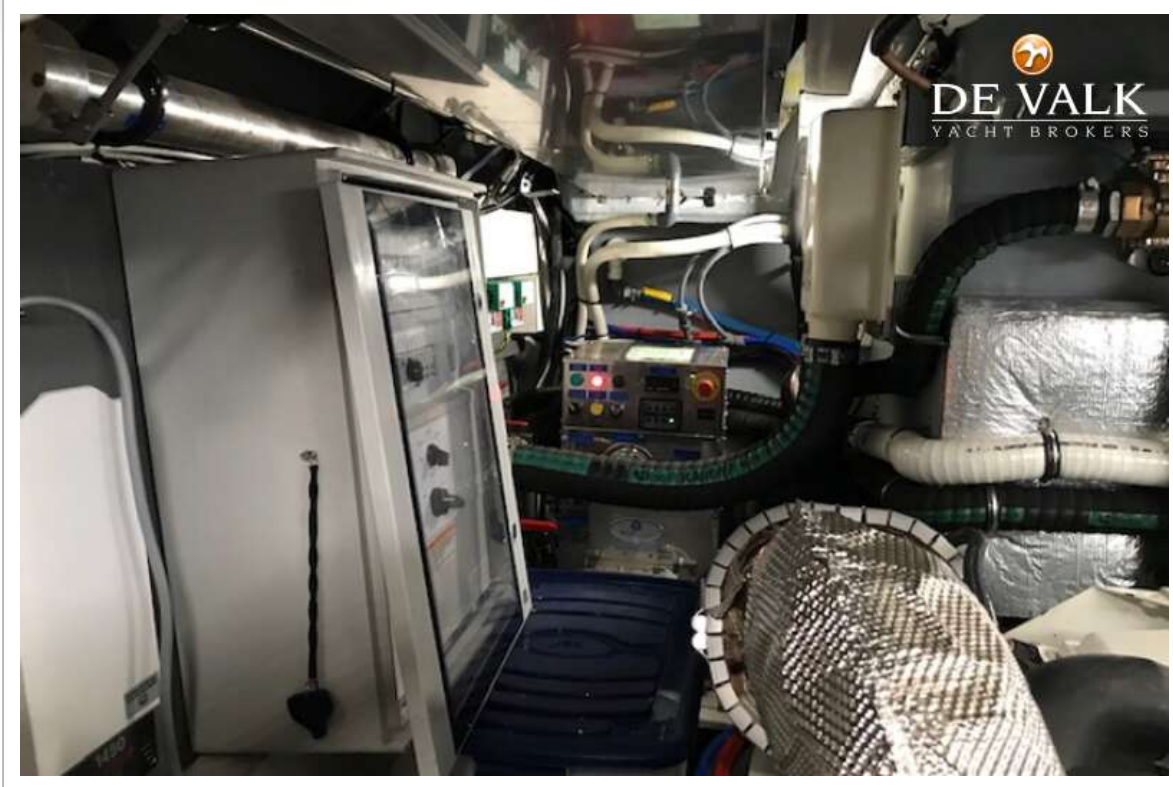
# ABSOLUTE 52 FLY



# ABSOLUTE 52 FLY



# ABSOLUTE 52 FLY





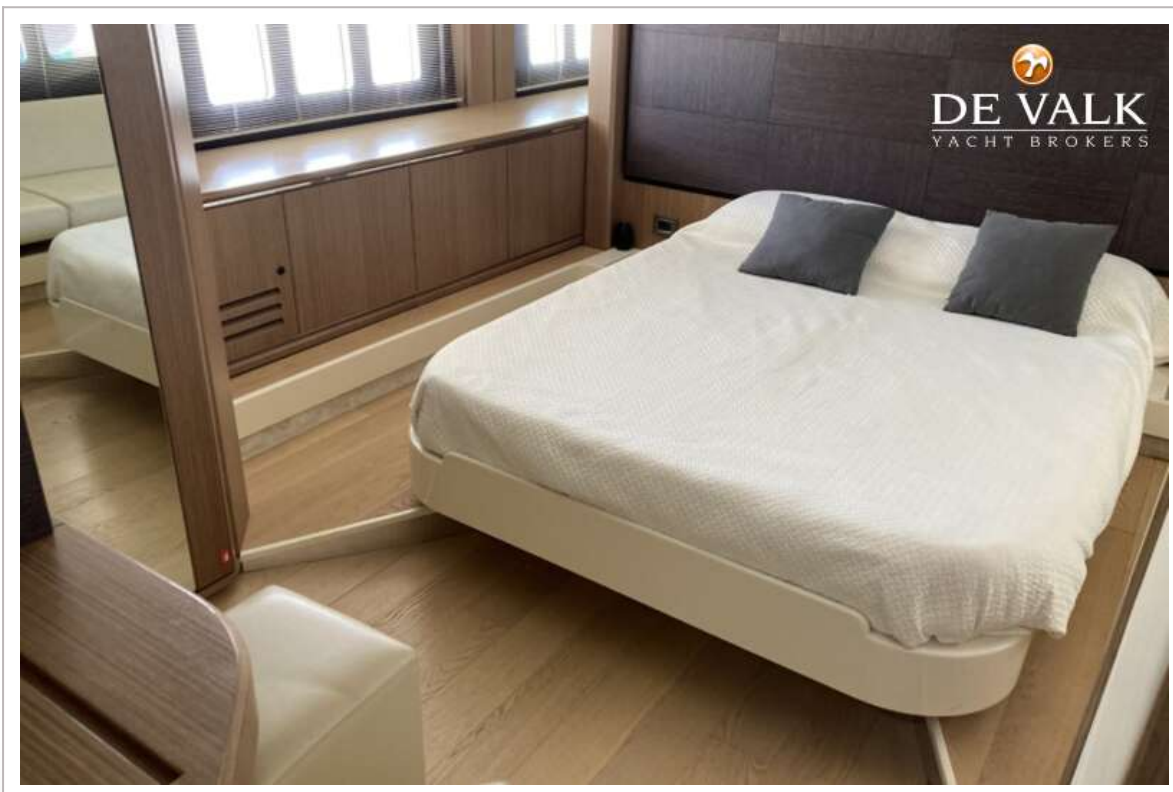
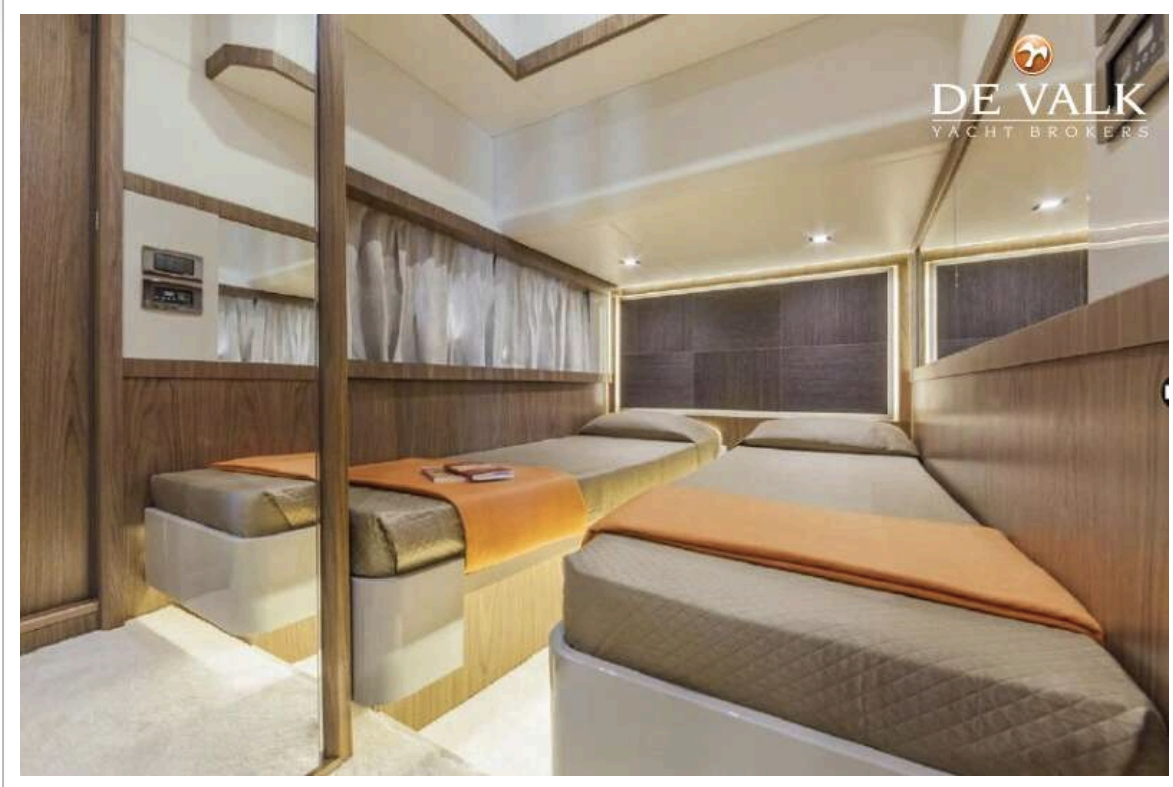
# ABSOLUTE 52 FLY



# ABSOLUTE 52 FLY



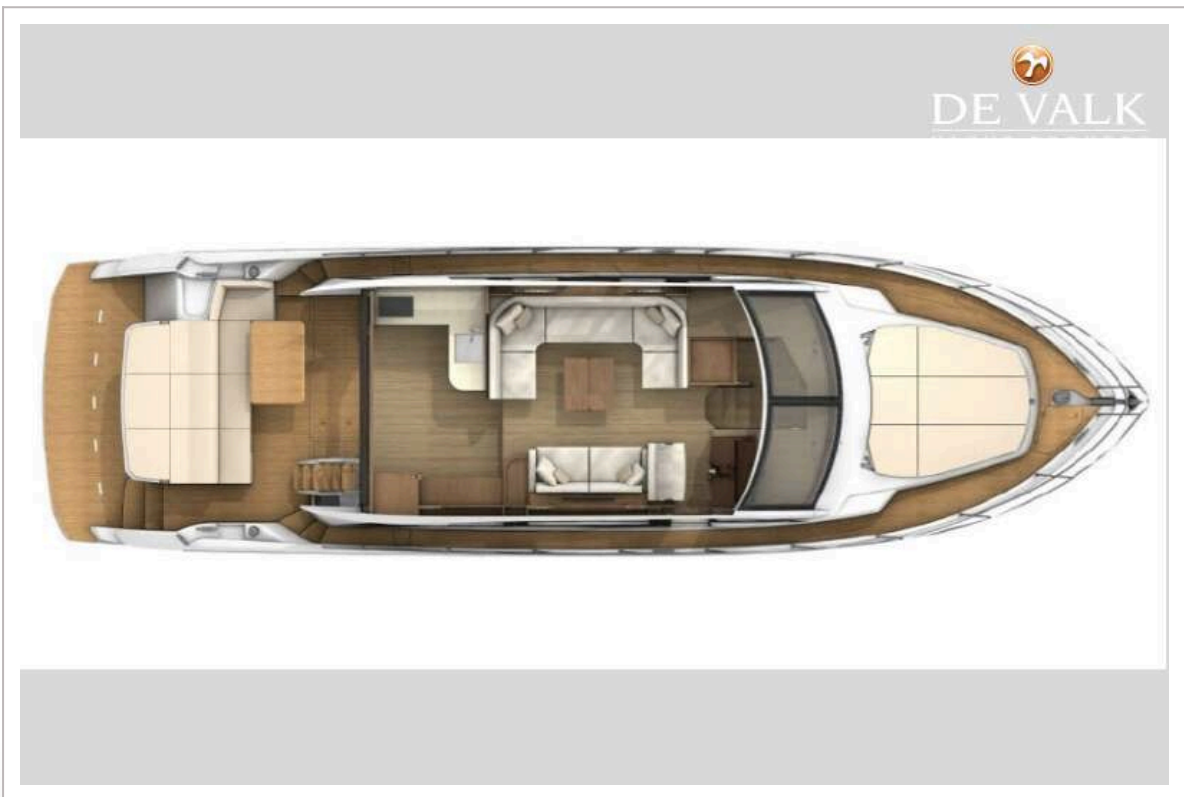
# ABSOLUTE 52 FLY



# ABSOLUTE 52 FLY



# ABSOLUTE 52 FLY



# ABSOLUTE 52 FLY

