



**DE VALK**  
YACHT BROKERS



## CHEOY LEE 53 MOTORSAILER



**DE VALK**  
YACHT BROKERS

# CHEOY LEE 53 MOTORSAILER

## VAN DE MAKELAAR

M/S built by CHEOY LEE SHIPYARDS LTD in Hong Kong in 1980. Cheoy Lee Shipyards, are shipbuilders for over a century and producers of over 5,000 vessels. The yacht owner of this M/S has done a refit and many upgrades. 100% of all systems, all electrical systems and wiring, all electronic systems, the rigging and all windows, portholes, everything on the yacht has been renewed.

*Sofia Iliia-Salvanou*

## SPECIFICATIES

<b>Afmetingen</b>	19.28 x 4.88 x 2.82 (m)	<b>Bouwer</b>	CHEOY LEE SHIPYARDS Ltd
<b>Bouwjaar</b>	1980	<b>Hutten</b>	3
<b>Materiaal</b>	Polyester	<b>Slaapplaatsen</b>	9
<b>Motor(en)</b>	2 x FORD LEHMAN diesel	<b>Pk/Kw</b>	2 x 120.00 (pk), 88.20 (kw)
<b>Vraagprijs</b>	verkocht (BTW )	<b>Ligplaats</b>	elders / niet bij verkoopkantoor

## CONTACT

<b>Kantoor</b>	De Valk Corfu	<b>Telefoon</b>	(+30) 6948681503
<b>Adres</b>	New Port of Corfu, near Gouvia Marina 490 83 Corfu GR	<b>E-mail</b>	corfu@devalk.nl

## DISCLAIMER

Hoewel er uiterste zorg besteed is aan de correctheid, volledigheid en actualiteit van onze informatie kunnen hieraan geen rechten worden ontleend.



# CHEOY LEE 53 MOTORSAILER

## ALGEMEEN

<b>Model</b>	CHEOY LEE 53 MOTORSAILER
<b>Type</b>	motorzeiler
<b>Lengte (m)</b>	19,28
<b>Lengte waterlijn (m)</b>	15,39
<b>Breedte (m)</b>	4,88
<b>Diepgang (m)</b>	2,82
<b>Bouwjaar</b>	1980
<b>Gebouwd door</b>	CHEOY LEE SHIPYARDS Ltd
<b>Land</b>	Hongkong
<b>Ontwerper</b>	Pieter Beeldsnijder & Simon Jupe
<b>Netto tonnage</b>	33,89 t
<b>CE norm</b>	NA
<b>Romp materiaal</b>	polyester
<b>Romp kleur</b>	wit
<b>Kiel type</b>	doorlopende kiel
<b>Materiaal opbouw</b>	polyester
<b>Stootlijst</b>	hout
<b>Dek materiaal</b>	polyester
<b>Afwerking dek</b>	teak
<b>Afwerking opbouw</b>	anti-slip profiel
<b>Afwerking kuip</b>	anti-slip profiel
<b>Raamlijsten</b>	aluminium
<b>Dekluik</b>	ja
<b>Patrijspoorten</b>	X 12
<b>Isolatie</b>	ja
<b>Flybridge</b>	ja
<b>Flybridge afdekzeil</b>	ja
<b>Radarbeugel</b>	ja
<b>Brandstoftank (liter)</b>	5500 in 4 GRP tanks
<b>Inhoudsmeter (brandstoftank)</b>	ja



# CHEOY LEE 53 MOTORSAILER

Brandstof dagtank (liter)	1000 (one of the 4 fuel tanks)
Inhoudsmeter (dagtank)	ja
Drinkwatertank (liter)	1100 x 1 GRP TANK Newly built 2008)
Inhoudsmeter (drinkwatertank)	ja
Vuilwatertank (liter)	2 x 70 polypropylene with discharge pump system and deck vacuum
Inhoudsmeter (vuilwatertank)	ja
Vuilwatertank afvoer	ja
Grijswatertank (liter)	X 2 (1x 20 Lt & 1x 300 Lt)
Inhoudsmeter (grijswatertank)	ja
Stuurwiel	ja
Binnen stuurstand	ja
Stuurwiel op flybridge	ja
Extra info	Fuel & fresh water tanks with Baffles & cleaning manholes (2006)
Extra info	Refit 2008 by Lloyds certified shipyard
Extra info	New all electrical, electronic systems, new all rigging, windows

## ACCOMMODATIE

Hutten	3
Slaapplaatsen	9
Interieur	Oak painted white & solid tropical wooden floors
Vloer	hout
Salon	ja
Verwarming	WEBASTO Airtop 5000, warm air vents in all spaces
Airco	Central 60000 BTU airhandlers: Pilot House, Master cab,port Cab
Navigatie ruimte	ja
Kaartentafel	ja
Keuken	ja
Aanrechtblad	corian
Spoelbak	ja
Kooktoestel	ja



# CHEOY LEE 53 MOTORSAILER

Oven	ja
Afzuigkap	ja
Magnetron	ja
Koelkast	ja
Vriezer	ja
Warmwatersysteem	From insulated Lt grade 1 copper tank
Koffiezetapparaat	ja
Kommaliewan	ja
Eigenaarshut	tweepersoonsbed
Kledingkast	ja
Badkamer	ja
Toilet	ja
Douche	ja
Gastenhut 1	v-bed
Kledingkast	ja
Badkamer	ja
Toilet	ja
Gastenhut 2	stapelbed
Kleerkast	ja
Badkamer	ja
Toilet	ja
Wasmachine	ja
Flybridge	ja

## MOTOR(EN)

Aantal motoren	2
Merk	FORD LEHMAN
Pk	120
kW	88.20
Brandstof	diesel
Geïnstalleerd in jaar	1980



# CHEOY LEE 53 MOTORSAILER

<b>Gereviseerd in jaar</b>	Rebuilt 2007
<b>Maximale snelheid (kn)</b>	15 Kph
<b>Kruissnelheid (kn)</b>	11 Kph
<b>Verbruik (ltr/uur)</b>	30
<b>Bereik (nm)</b>	1200
<b>Motoruren</b>	1970
<b>Aandrijving</b>	schroefas
<b>Keerkoppeling</b>	X 2 PRM750
<b>Boegschroef</b>	Sleipner Side power 24V type SP155-TC
<b>Uitlaatsysteem</b>	watergekoeld X3 Halyards separators for main engines & Generator
<b>Type schroef</b>	2x Bruntons Auto (pitch) propellers
<b>Schroefbladen</b>	3
<b>Materiaal schroefas</b>	2x2 inch shafts & shaft brakes x2 Bruntons auto lock systems
<b>Smering schroefas</b>	Shaft seals 2x tides Marine Sure Seals cooling, sensors,acoustic
<b>Handlenspomp</b>	ja
<b>Elektrische lenspomp</b>	ja
<b>Bilge alarm</b>	ja
<b>Elektrische installatie</b>	ja
<b>Generator</b>	ONAN 17,5 Kw 2008
<b>Draaiuren generator</b>	3420 h 09/2021 F142 sound shield
<b>Accu's</b>	ja
<b>Startaccu</b>	New 2020 12V
<b>Lichtaccu</b>	New 2020 24V
<b>Navigatie accu</b>	12V for Raymarine systems
<b>Generatoraccu</b>	New 2020 24V
<b>Boegschroefaccu</b>	ja
<b>Accu monitor</b>	ja
<b>Acculader</b>	2x100Amp 24V Mastervolt
<b>Omvormer</b>	1x5kw 24V to 220V Mastervolt & 1x2,5kw 24to220V Mastervolt
<b>Zonnecellen</b>	3x130W can Solar Panel 2014
<b>Walstroom</b>	ja



# CHEOY LEE 53 MOTORSAILER

<b>Watermaker</b>	SPECTRA Newport 700, 24V, 75Lt/hr
<b>Stabilisatoren</b>	VETUS Hydraulic, power take off from engines. Two large BLADES
<b>Extra info</b>	Oil change system Reverso auto oil change system for eng & gen
<b>Extra info</b>	MASTERVOLT: all electrical systems
<b>Extra info</b>	All batteries have separate Mastervolt chargers

## NAVIGATIE

<b>Kompas</b>	ja
<b>Kompas op flybridge</b>	ja
<b>Dieptemeter</b>	ja
<b>Marifoon</b>	1X Raymarine , 1X SIMRAD
<b>Autopiloot</b>	X2 Raymarine ST8002 &ST6002
<b>Roerstand aanwijzer</b>	Raymarine ST60 rudder, speed, depth, wind gauges
<b>Radar</b>	Raymarine 48 Nm
<b>GPS</b>	X3 Raymarine E80
<b>Plotter/GPS</b>	ja
<b>Navtex</b>	Digital x1
<b>Camera</b>	CCTV X3 Raymarine (2 on spreaders 1 eng room)
<b>Extra info</b>	ICOM ssb Radio, GMDDS
<b>Extra info</b>	1X SAT C

## UITRUSTING

<b>Vaste ramen</b>	ja
<b>Vaste buiskap</b>	ja
<b>Zonnetent</b>	ja
<b>Kuipkussens</b>	ja
<b>Kuiptafel</b>	ja
<b>Kuipstoelen</b>	ja
<b>Zwemplatform</b>	ja



# CHEOY LEE 53 MOTORSAILER

Zwemtrap	roestvast staal
Deur in spiegel	ja
Boegtrap	ja
Loopplank	ja
Anker	Bruce 50Kg
Ankerketting	125 mtr stainless steel 13mm 316L DIN766/mtr
Ankerlier	Muir Thor 4200 electr. auto anchor system in Pilot house & flybr
Zeereling	Teak rub railing
Reddingsvlot	Zodiac Ocean
Reddingsvlot (pers)	8
Zwemvesten	ja
Joon	Auto inflatable MOB recovery system
Veiligheidslijnen op dek	Removable on both deck sides
Stootkussens	ja
Landvasten	ja
Alarm systeem	ja
TV	X 2 flat screen 2020 42'&24"
Satelliet	ja
Radio	ja
DVD speler	ja
Surround Sound System	ja
Kuipspeakers	ja
Klok - barometer	ja
Brandblusser	In all cabins and eng room
Brandblusser in motorkamer	ja

## TUIGAGE

Tuigage	ja
Merk mast	17m
Materiaal mast	aluminium
Grootzeil	Bamar furling electrical syst. controls from pilot H, decks,flybr



# CHEOY LEE 53 MOTORSAILER

**Genua**

Bamar furling electrical syst. controls from pilot H, decks, flybr

**Giekneerhouder**

HALMATRO hydraulic

**Vallieren**

HARKEN Electrical

**Multifunctionele lieren**

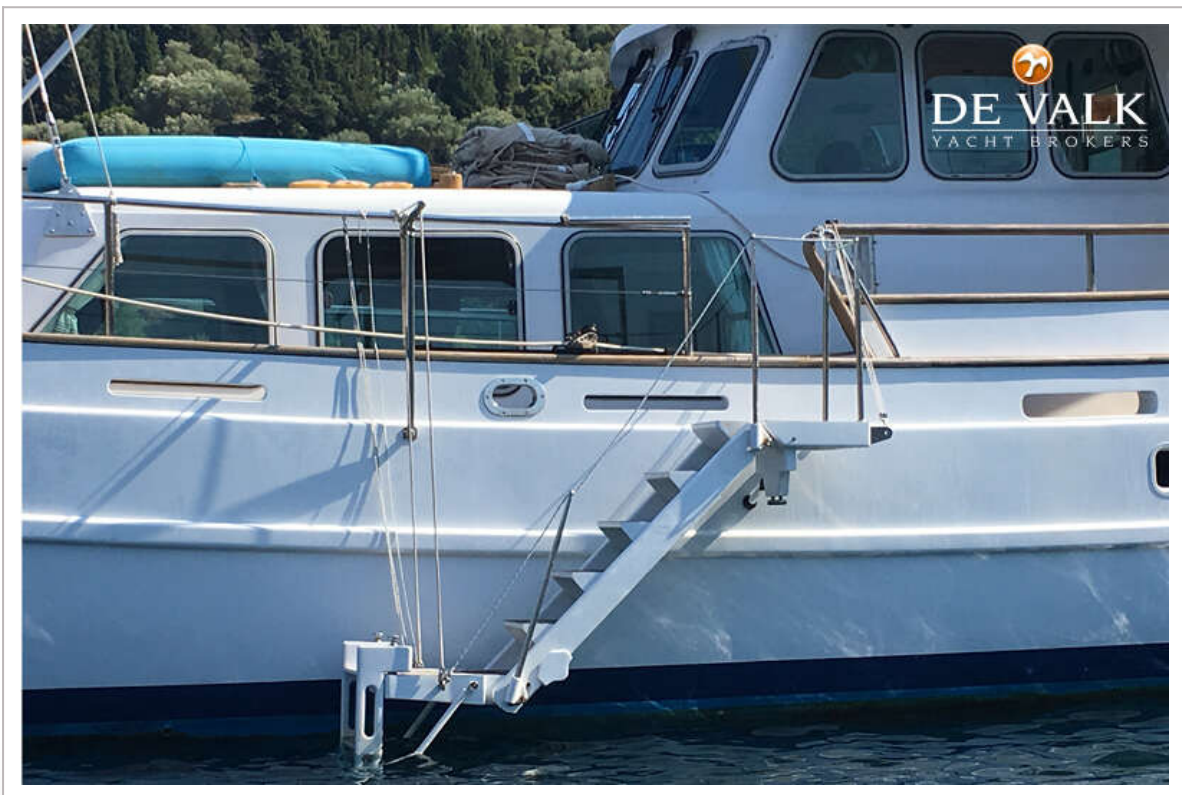
HARKEN Electrical



# CHEOY LEE 53 MOTORSAILER



# CHEOY LEE 53 MOTORSAILER



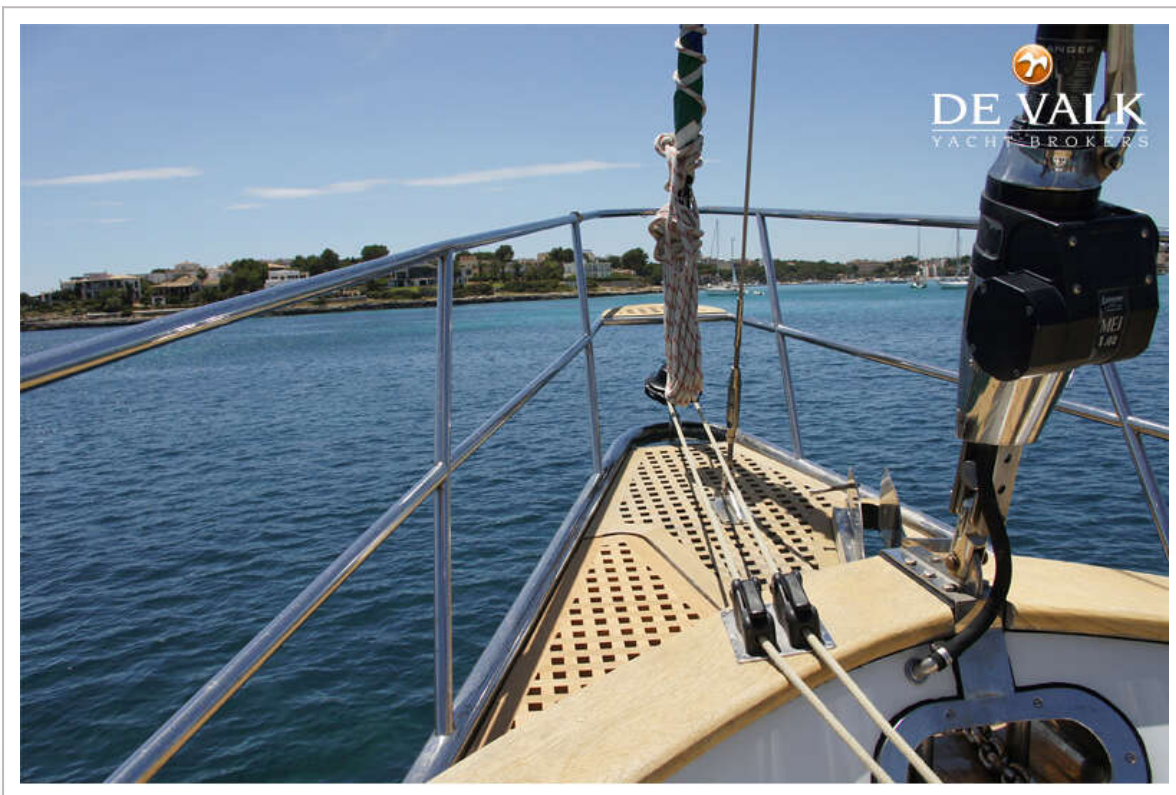
# CHEOY LEE 53 MOTORSAILER



# CHEOY LEE 53 MOTORSAILER



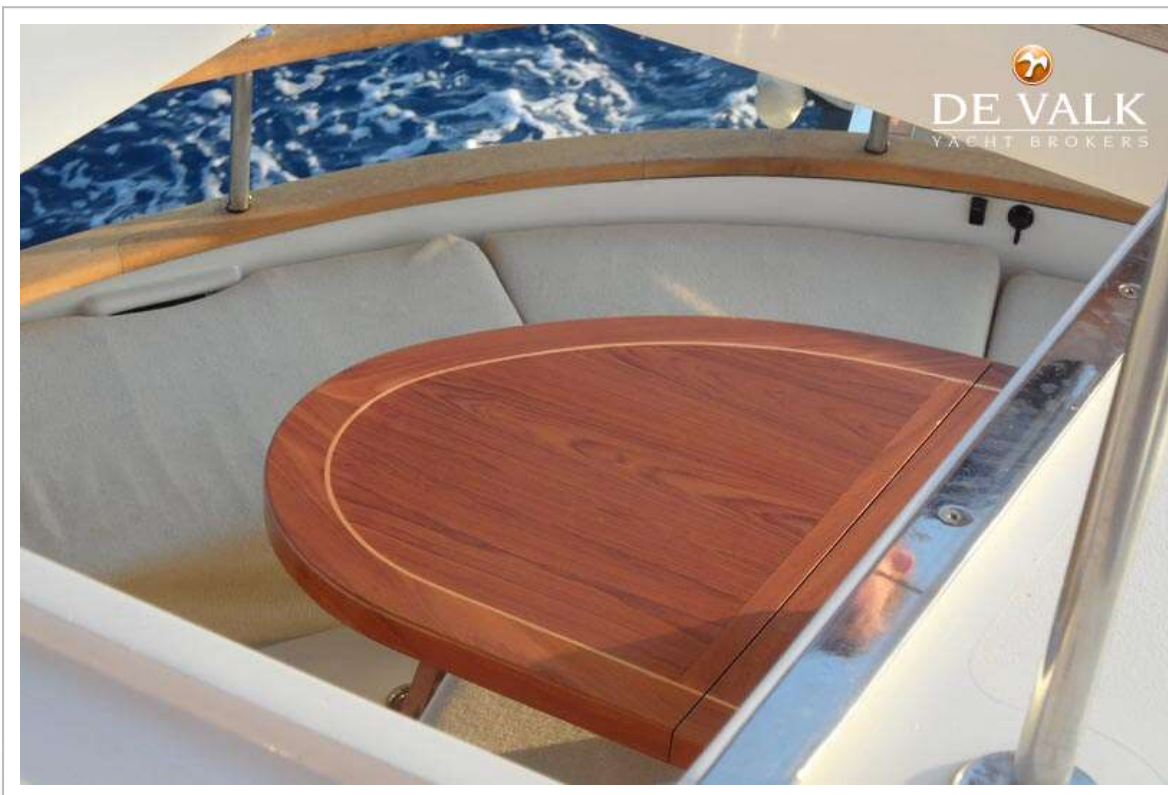
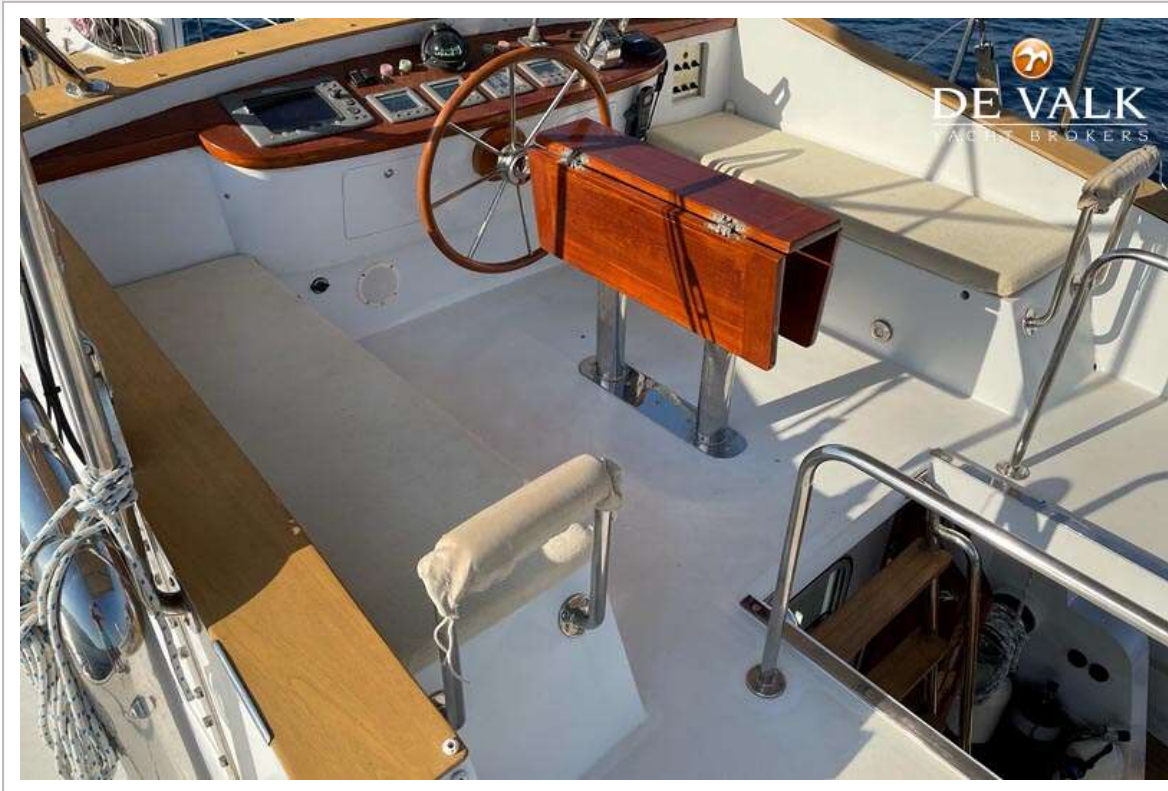
# CHEOY LEE 53 MOTORSAILER



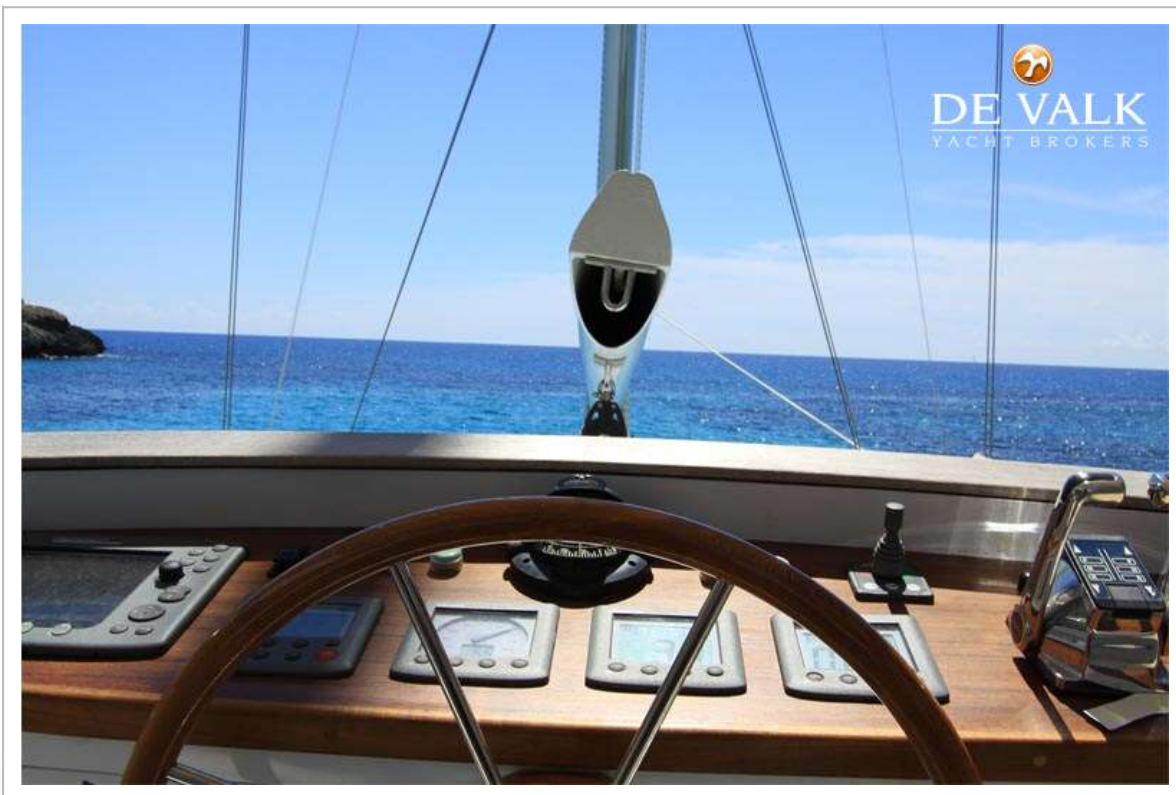
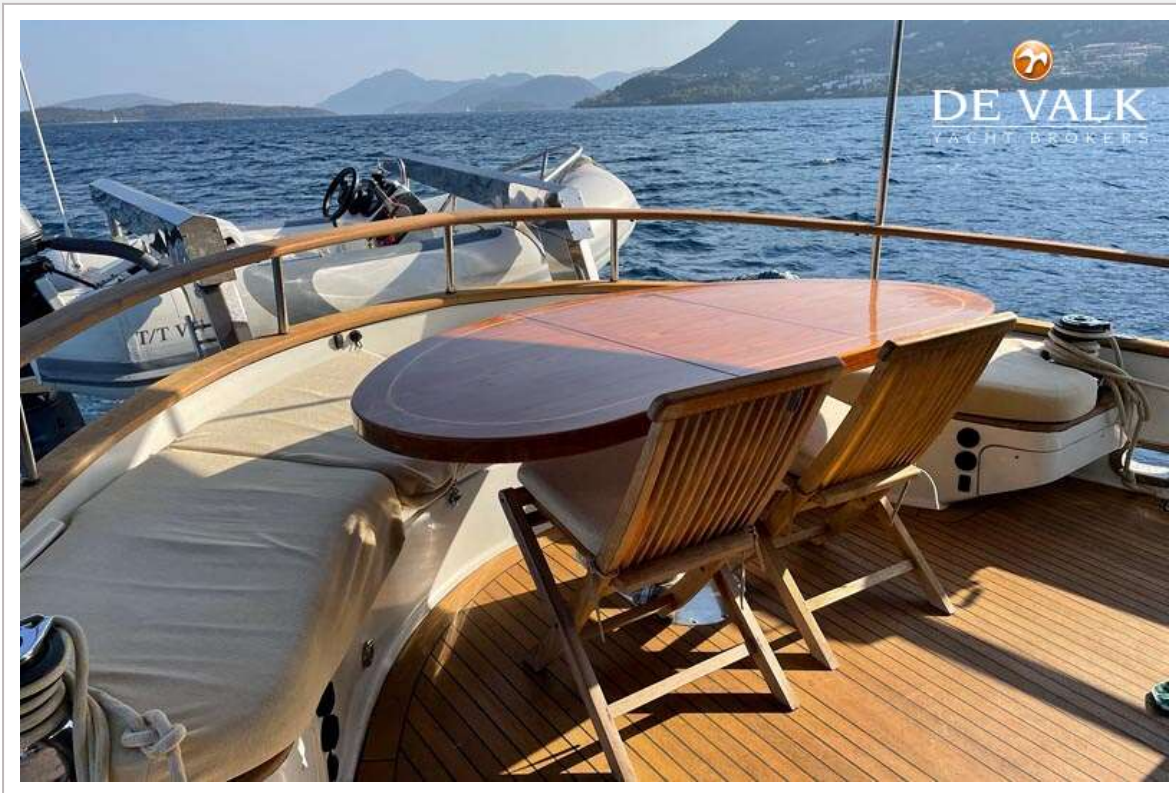
# CHEOY LEE 53 MOTORSAILER



# CHEOY LEE 53 MOTORSAILER



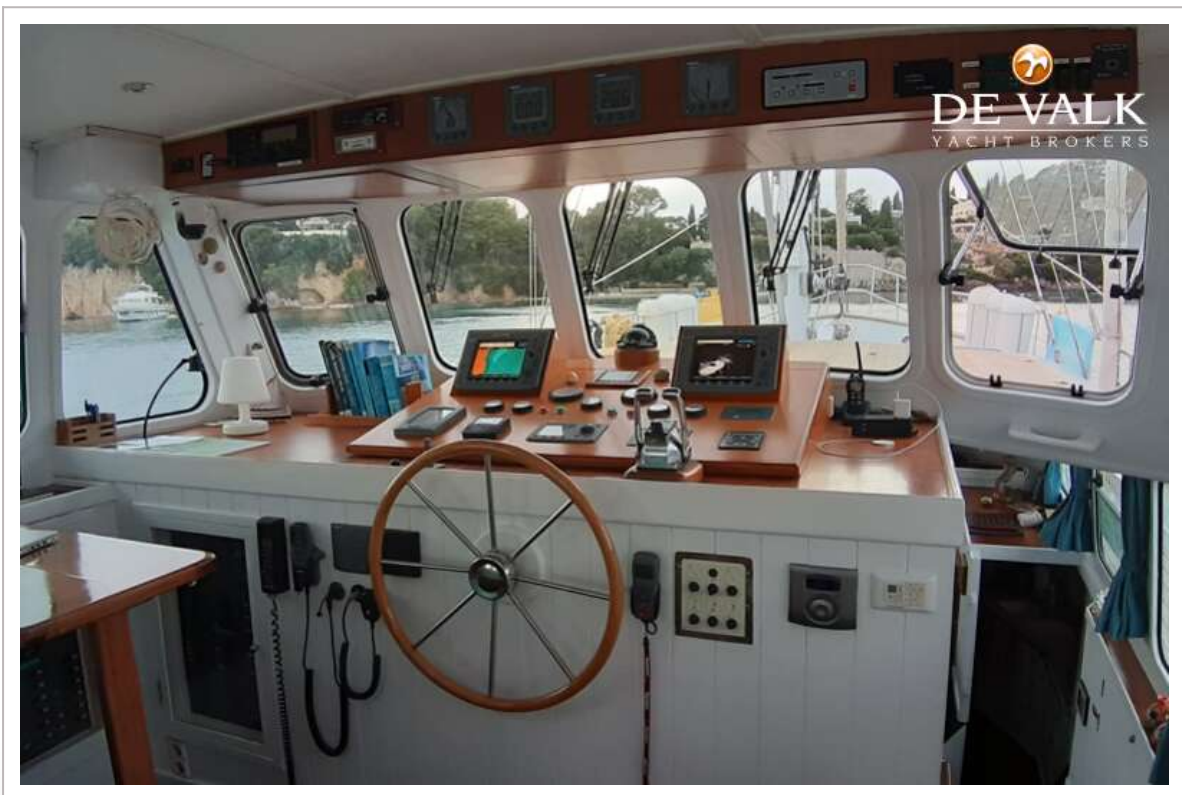
# CHEOY LEE 53 MOTORSAILER



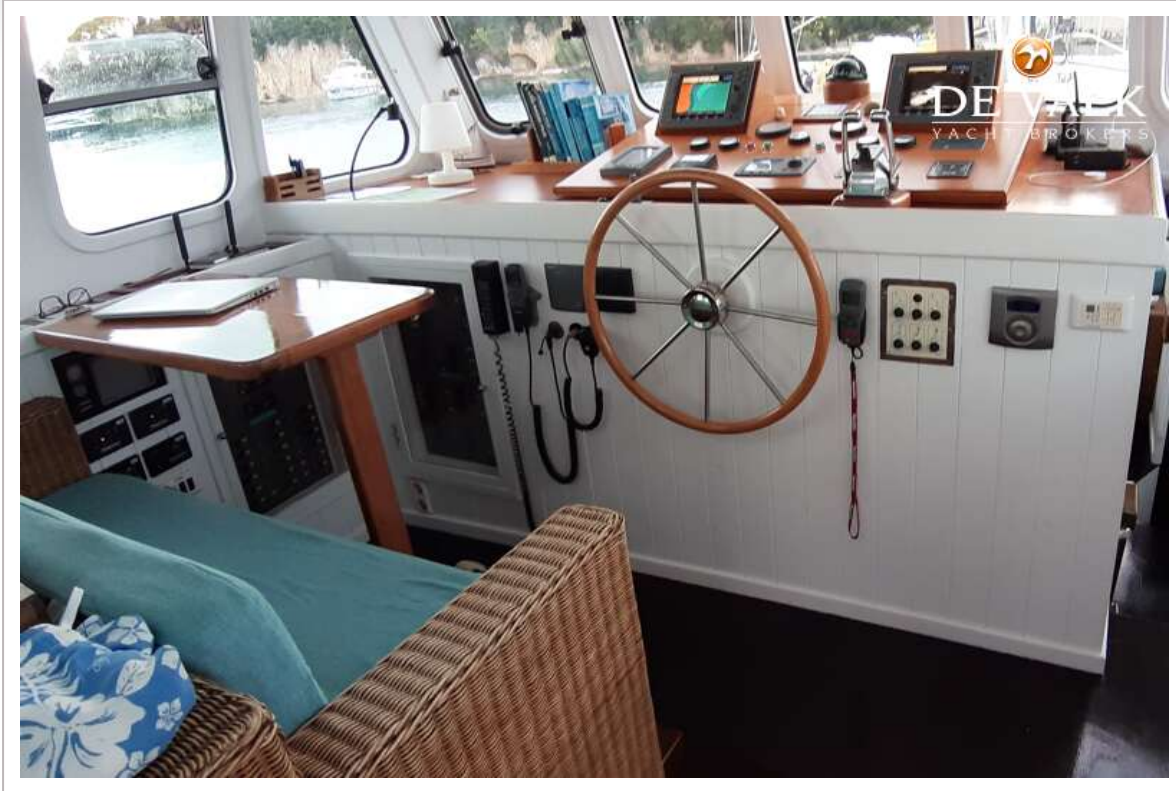
# CHEOY LEE 53 MOTORSAILER



# CHEOY LEE 53 MOTORSAILER



# CHEOY LEE 53 MOTORSAILER



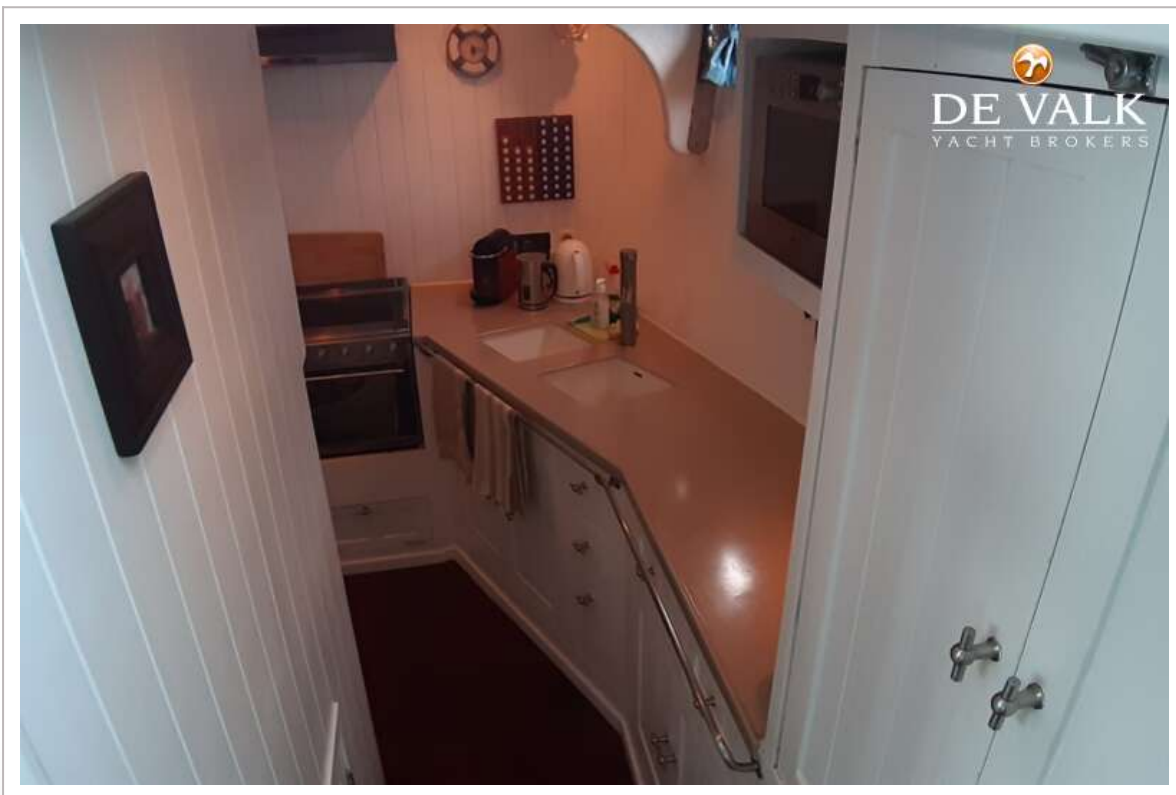
# CHEOY LEE 53 MOTORSAILER



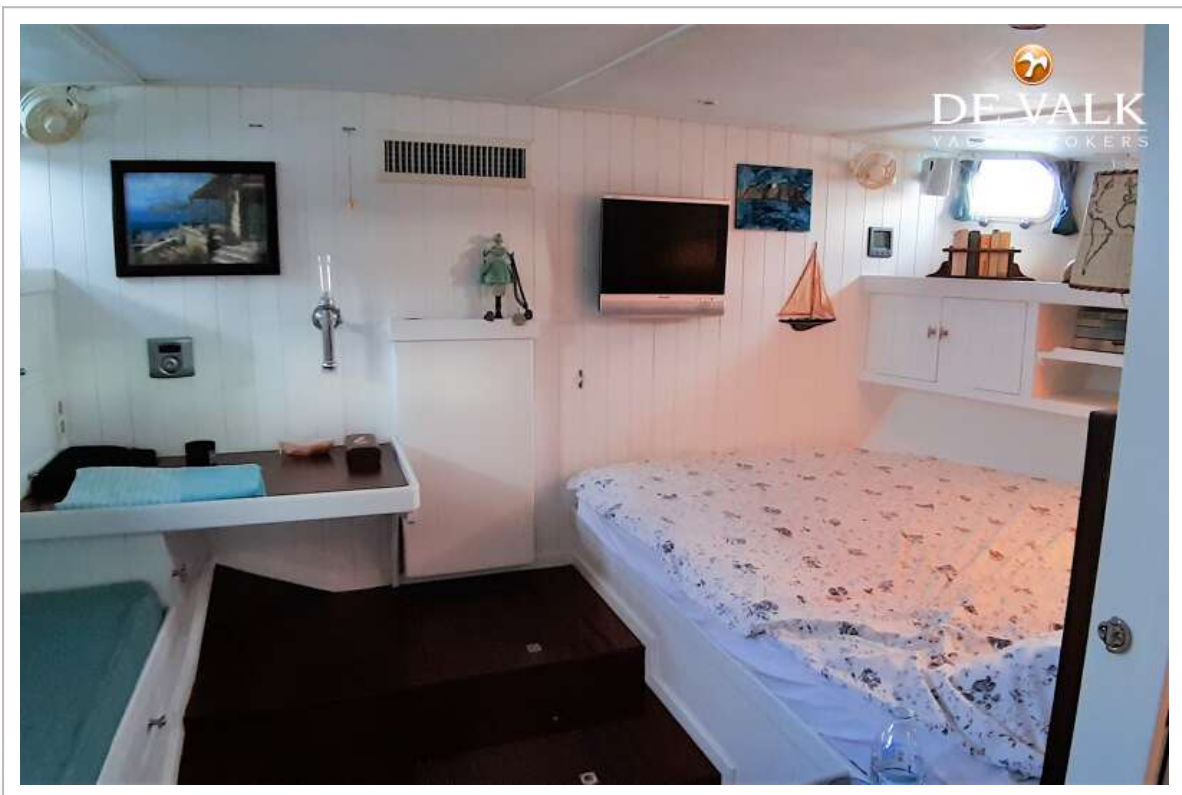
# CHEOY LEE 53 MOTORSAILER



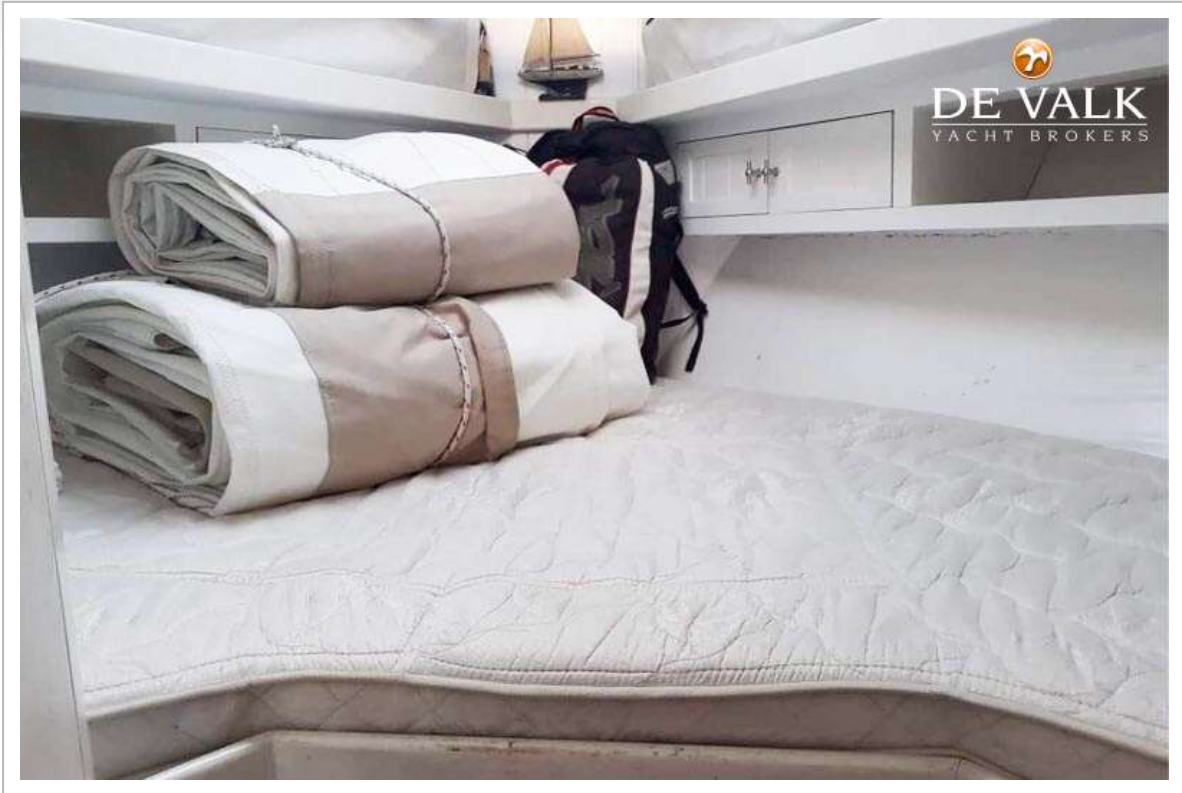
# CHEOY LEE 53 MOTORSAILER



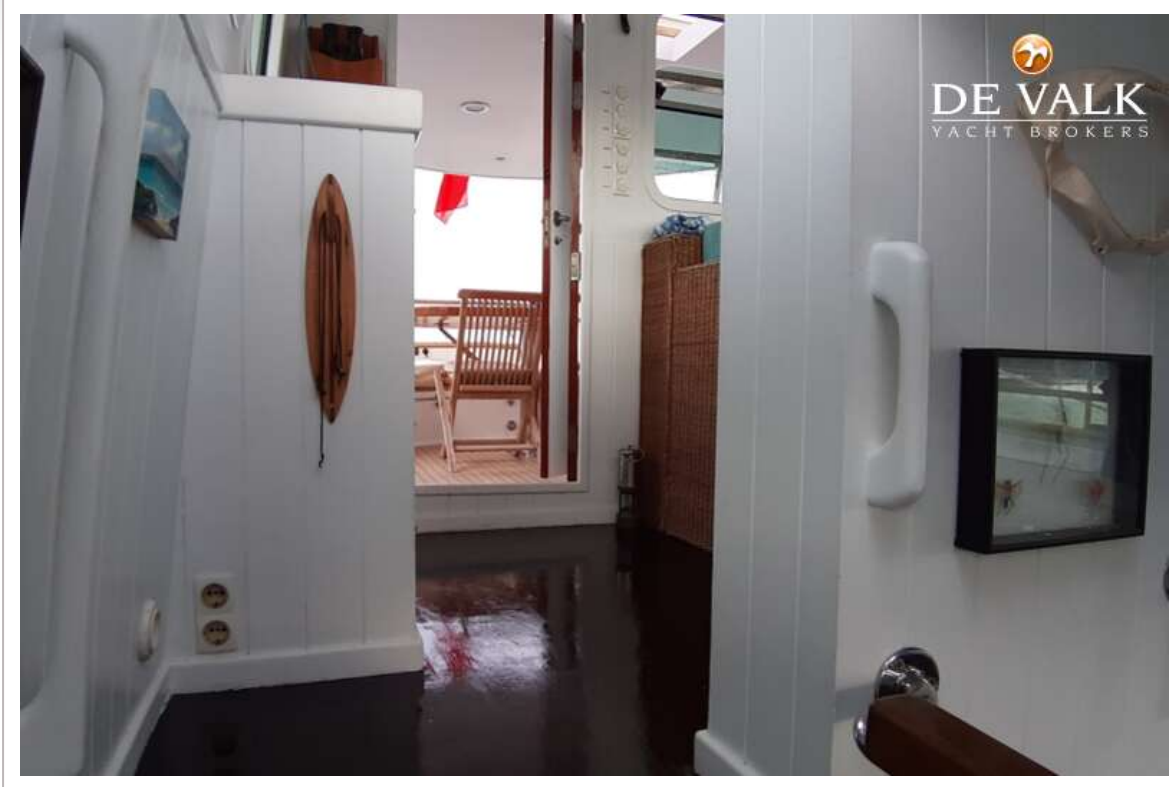
# CHEOY LEE 53 MOTORSAILER



# CHEOY LEE 53 MOTORSAILER



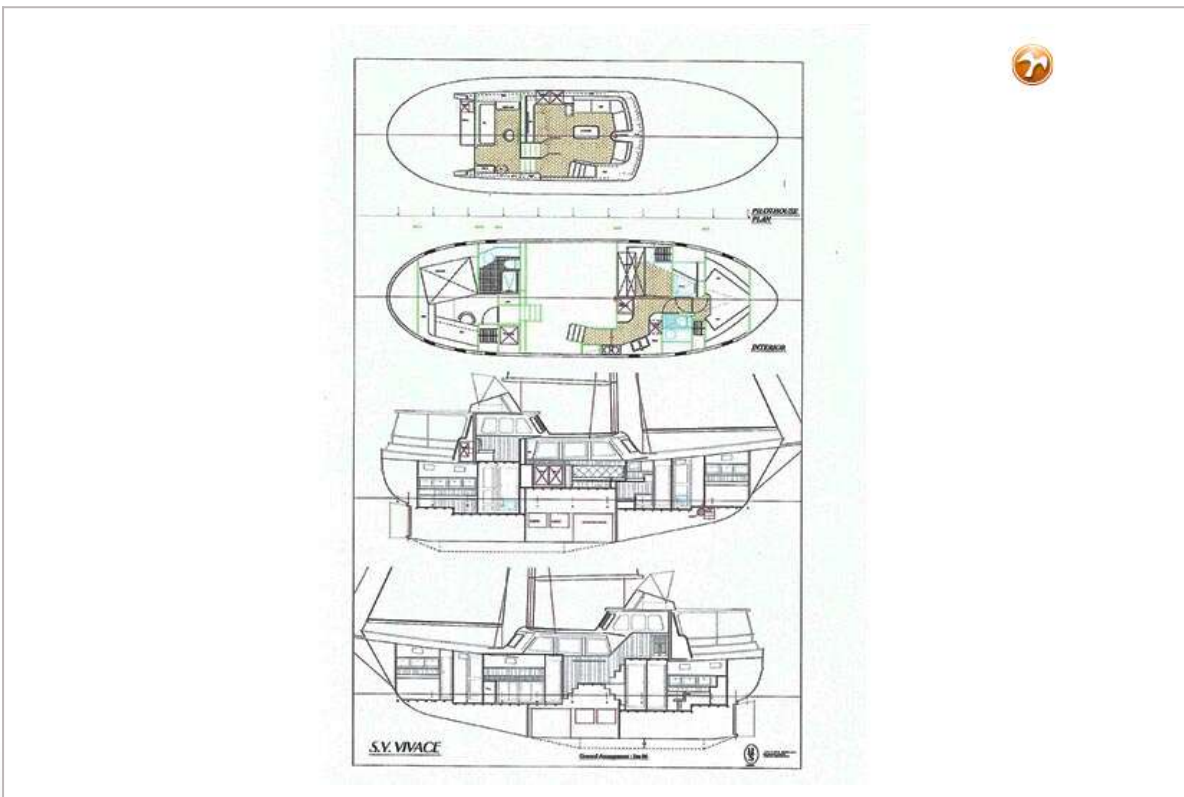
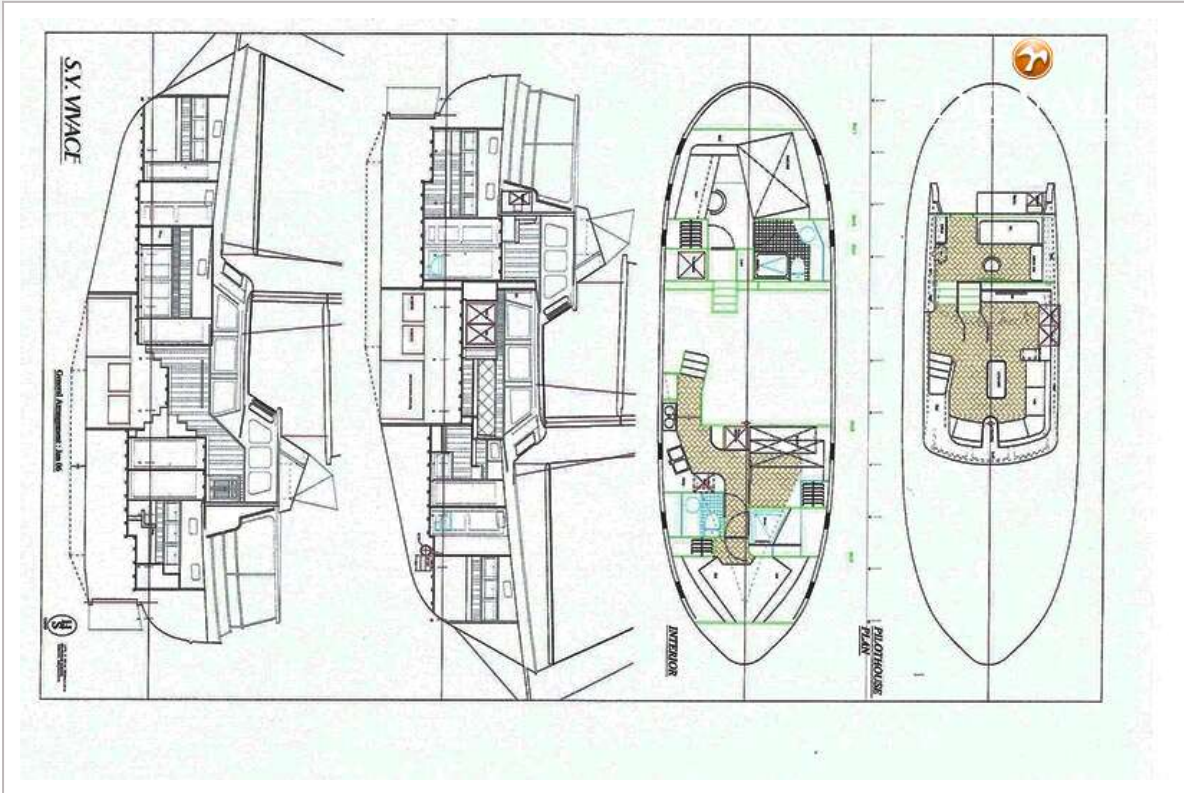
# CHEOY LEE 53 MOTORSAILER



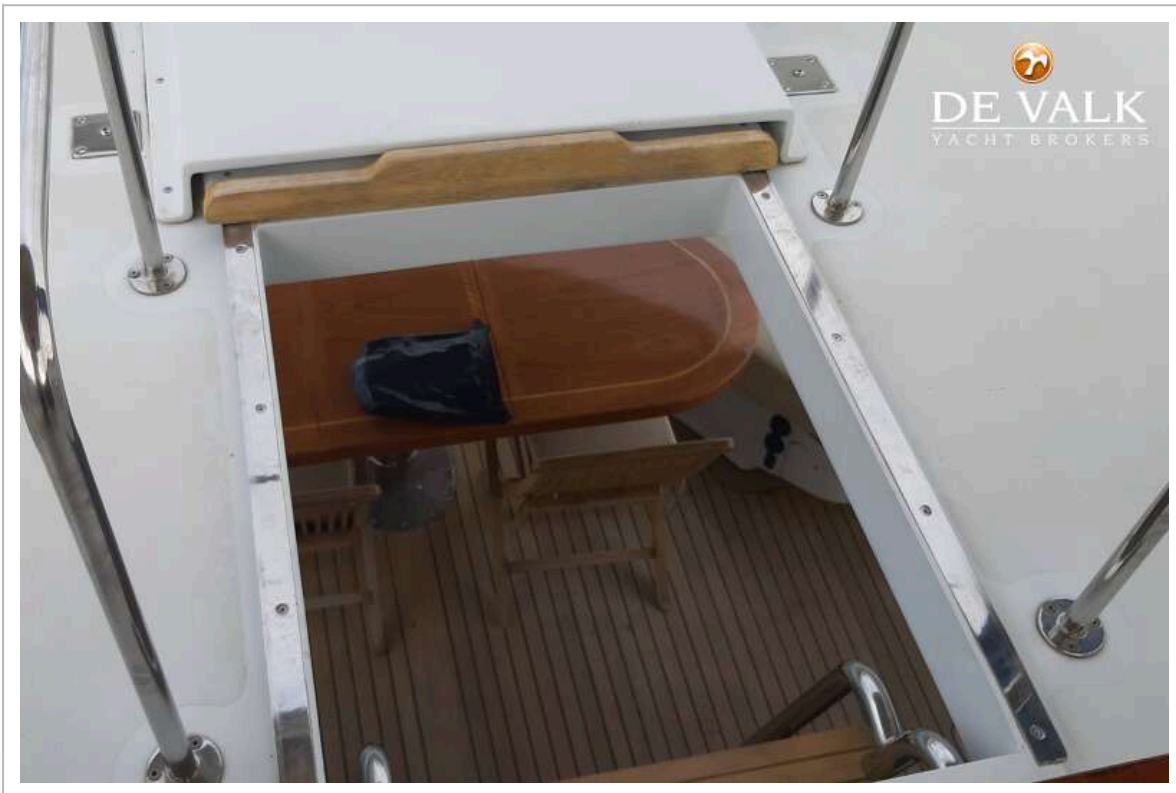
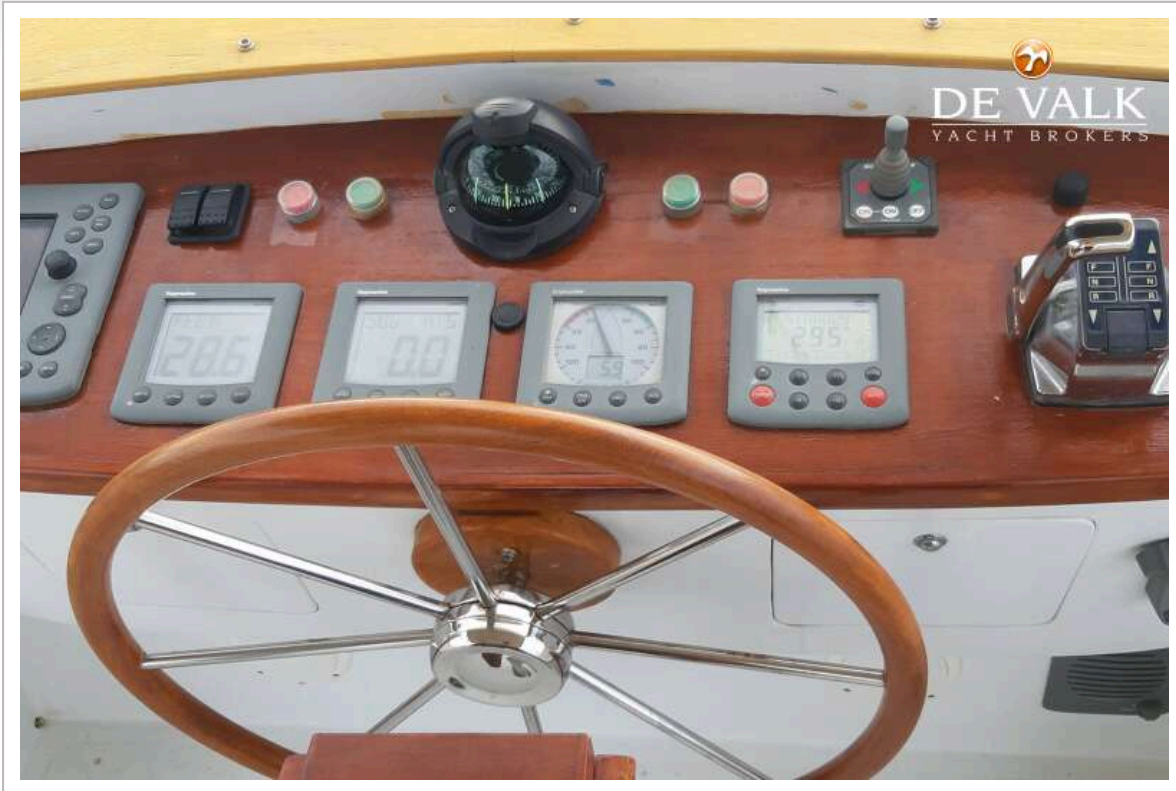
# CHEOY LEE 53 MOTORSAILER



# CHEOY LEE 53 MOTORSAILER



# CHEOY LEE 53 MOTORSAILER



# CHEOY LEE 53 MOTORSAILER

