



DE VALK  
YACHT BROKERS



## BENETEAU FIRST 405



DE VALK  
YACHT BROKERS

# BENETEAU FIRST 405

## VAN DE MAKELAAR

BENETEAU First 405, designed by J Berret, put Beneteau on the world map with its impressive race record by winning the Admiral's Cup Ocean Race. This yacht "TASMAN" has been owned by one family for the past 28 years, used & in the water only 6 weeks per Summer and she has been carefully maintained.

*Sofia Iliia-Salvanou*

## SPECIFICATIES

|                   |                             |                      |                                  |
|-------------------|-----------------------------|----------------------|----------------------------------|
| <b>Afmetingen</b> | 12.40 x 3.89 x 2.19 (m)     | <b>Bouwer</b>        | BENETEAU                         |
| <b>Bouwjaar</b>   | 1988                        | <b>Hutten</b>        | 3                                |
| <b>Materiaal</b>  | Polyester                   | <b>Slaapplaatsen</b> | 6                                |
| <b>Motor(en)</b>  | 1 x PERKINS diesel          | <b>Pk/Kw</b>         | 54.00 (pk), 39.74 (kw)           |
| <b>Vraagprijs</b> | € 40.000 (BTW Niet betaald) | <b>Ligplaats</b>     | elders / niet bij verkoopkantoor |

## CONTACT

|                |   |                 |                  |
|----------------|---|-----------------|------------------|
| <b>Kantoor</b> | De Valk Corfu   | <b>Telefoon</b> | (+30) 6948681503 |
| <b>Adres</b>   | New Port of Corfu, near Gouvia Marina<br>490 83 Corfu<br>GR | <b>E-mail</b>   | corfu@devalk.nl  |

## DISCLAIMER

Hoewel er uiterste zorg besteed is aan de correctheid, volledigheid en actualiteit van onze informatie kunnen hieraan geen rechten worden ontleend.



# BENETEAU FIRST 405

## ALGEMEEN

|                               |   |
|-------------------------------|---|
| <b>Model</b>                  | BENETEAU FIRST 405  |
| <b>Type</b>                   | zeiljacht   |
| <b>Lengte (m)</b>             | 12,40   |
| <b>Breedte (m)</b>            | 3,89  |
| <b>Diepgang (m)</b>           | 2,19  |
| <b>Bouwjaar</b>               | 1988  |
| <b>Gebouwd door</b>           | BENETEAU  |
| <b>Land</b>                   | Frankrijk   |
| <b>Ontwerper</b>              | Jean Berret   |
| <b>Waterverplaatsing (t)</b>  | 8,3   |
| <b>Romp materiaal</b>         | polyester   |
| <b>Romp kleur</b>             | wit Hull treated in 2017 (stripped down to the gel and repainted) |
| <b>Kiel type</b>              | vin kiel  |
| <b>Materiaal opbouw</b>       | polyester   |
| <b>Dek materiaal</b>          | polyester   |
| <b>Afwerking dek</b>          | anti-slip profiel   |
| <b>Afwerking opbouw</b>       | anti-slip profiel   |
| <b>Afwerking kuip</b>         | teak  |
| <b>Antifouling (jaar)</b>     | 2019 on the dry dock ever after                                   |
| <b>Dekluik</b>                | ja  |
| <b>Patrijspooten</b>          | ja  |
| <b>Brandstoftank (liter)</b>  | ja  |
| <b>Drinkwatertank (liter)</b> | 3x200 (600) for extended cruising                                 |
| <b>Stuurwiel</b>              | ja  |
| <b>Buiten stuurstand</b>      | ja  |
| <b>Extra info</b>             | Keel bolts checked 2017.  |
| <b>Extra info</b>             | No osmosis detected when she was stripped and painted in 2017     |
| <b>Extra info</b>             | Last antifouling: 2019 before last cruise & power washed on haul  |

## ACCOMMODATIE



|                  |   |
|------------------|---|
| Hutten           | 3   |
| Slaapplaatsen    | 6   |
| Verwarming       | Ebersbacher forced air draft heating system                     |
| Kaartentafel     | ja  |
| Dinette          | ja  |
| Keuken           | ja  |
| Aanrechtblad     | ja  |
| Spoelbak         | ja  |
| Kooktoestel      | ja  |
| Oven             | ja  |
| Koelkast         | Electric chest type fridge                                      |
| Warmwatersysteem | ja  |
| Waterdruksysteem | Pressurized water system with calorifier for hot & cold showers |
| Kommaliewant     | ja  |
| Eigenaarshut     | tweepersoonsbed   |
| Badkamer         | en suite  |
| Toilet           | en suite  |
| Wasbak           | in de badkamer  |
| Douche           | en suite  |
| Gastenhut 1      | tweepersoonsbed   |
| Badkamer         | apart   |
| Toilet           | apart   |
| Wasbak           | in de badkamer  |
| Douche           | apart   |
| Gastenhut 2      | tweepersoonsbed   |
| Badkamer         | apart   |
| Toilet           | apart   |
| Wasbak           | in de badkamer  |
| Douche           | apart   |

MOTOR(EN)



|                         |   |
|-------------------------|---|
| Aantal motoren          | 1   |
| Merk                    | PERKINS   |
| Pk                      | 54  |
| kW                      | 39.74   |
| Brandstof               | diesel  |
| Gereviseerd in jaar     | Injectors overhauled in 2016                                  |
| Maximale snelheid (kn)  | 7   |
| Kruissnelheid (kn)      | 6   |
| Motoruren               | 2000  |
| Elektrische lenspomp    | ja  |
| Elektrische installatie | ja  |
| Generator               | ja  |
| Accu's                  | 2019  |
| Startaccu               | 1x100a/h  |
| Lichtaccu               | 2x120a/h  |
| Acculader               | ja  |
| Zonnecellen             | X 2, need service   |
| Walstroom               | Giving 220V   |
| Extra info              | Supplementary DC interior lighting system                     |
| Extra info              | Spare generator (in Lazarette)                                |
| Extra info              | Full set of maps for MED & Atlantic France, Ditto Pilot Books |

## NAVIGATIE

|                      |                     |
|----------------------|---------------------|
| Kompas               | ja                  |
| Dieptemeter          | ja                  |
| Marifoon             | ja                  |
| Handmarifoon         | ja                  |
| GPS                  | GARMIN              |
| Navigatieverlichting | ja                  |
| Zoeklicht            | Handheld Marine     |
| Extra info           | Sanyo walkie talkie |



Extra info

Motorola marine band 2- way radio communication

## UITRUSTING

Bimini

Built in Corfu

Loopplank

ja

Anker

DANFORTH

Ankerketting

50m plus 150 braided rope

Anker 2

BRUCE CLAW

Ankerketting

10m in reserve

Ankerlier

With telephone cable remote control

Bijboot

Seldom used in excellent condition

Buitenboordmotor

Seldom used in excellent condition

Reddingsvlot

Service overdue

Zwemvesten

ja

Stootkussens

ja

Landvasten

And spare

Gereedschap

Electric drill etc

Radio-cd speler

ja

Speakers in salon

ja

Brandblusser

X3 (2 in saloon plus 1 large powder type in wet locker)

Extra info

Emergency flares

Extra info

Interior upholstery fully replaces 2018

Extra info

Hand held marine 2-way marine band radio

## TUIGAGE

Tuigage

ja

Grootzeil

29,6sq.m recut overhauled 2019. Self furling in mast system

Genua

33,67 sq.m recut & overhauled 2019

Genua rolreefsysteem

ja

Stormfok

Unused yet



# BENETEAU FIRST 405



# BENETEAU FIRST 405



# BENETEAU FIRST 405



# BENETEAU FIRST 405



# BENETEAU FIRST 405



# BENETEAU FIRST 405



# BENETEAU FIRST 405



# BENETEAU FIRST 405



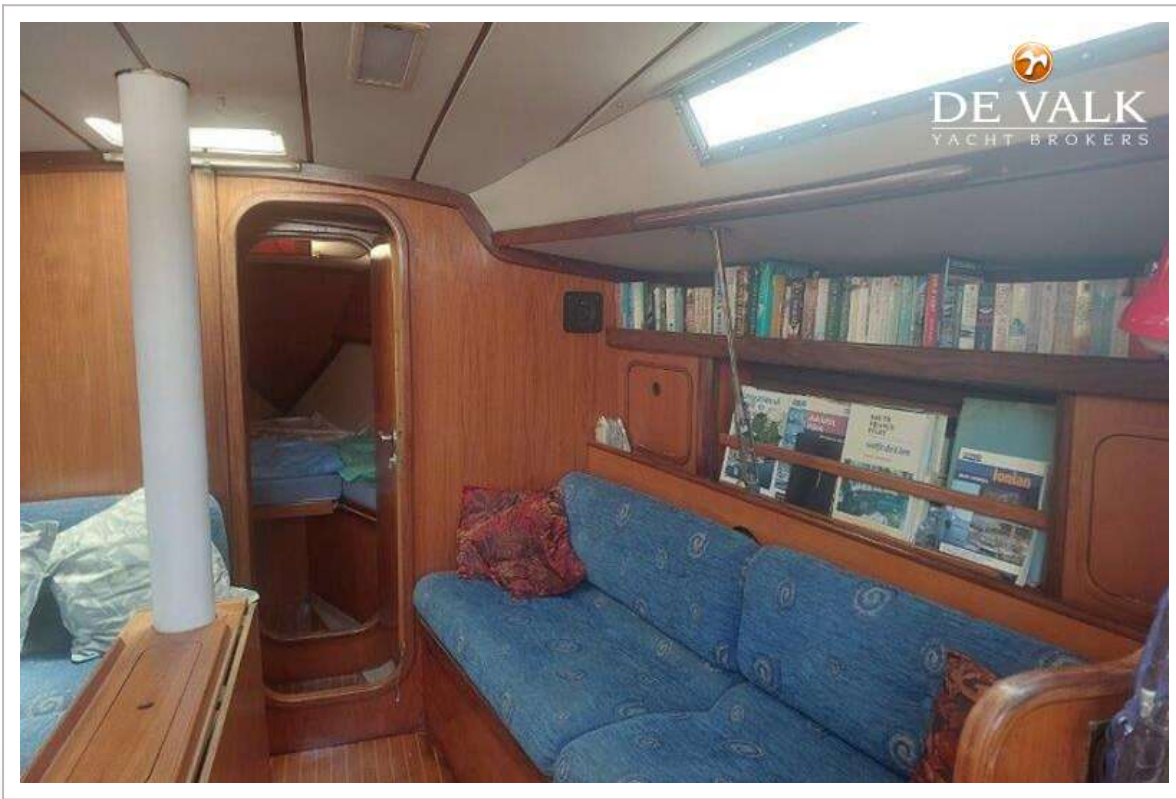
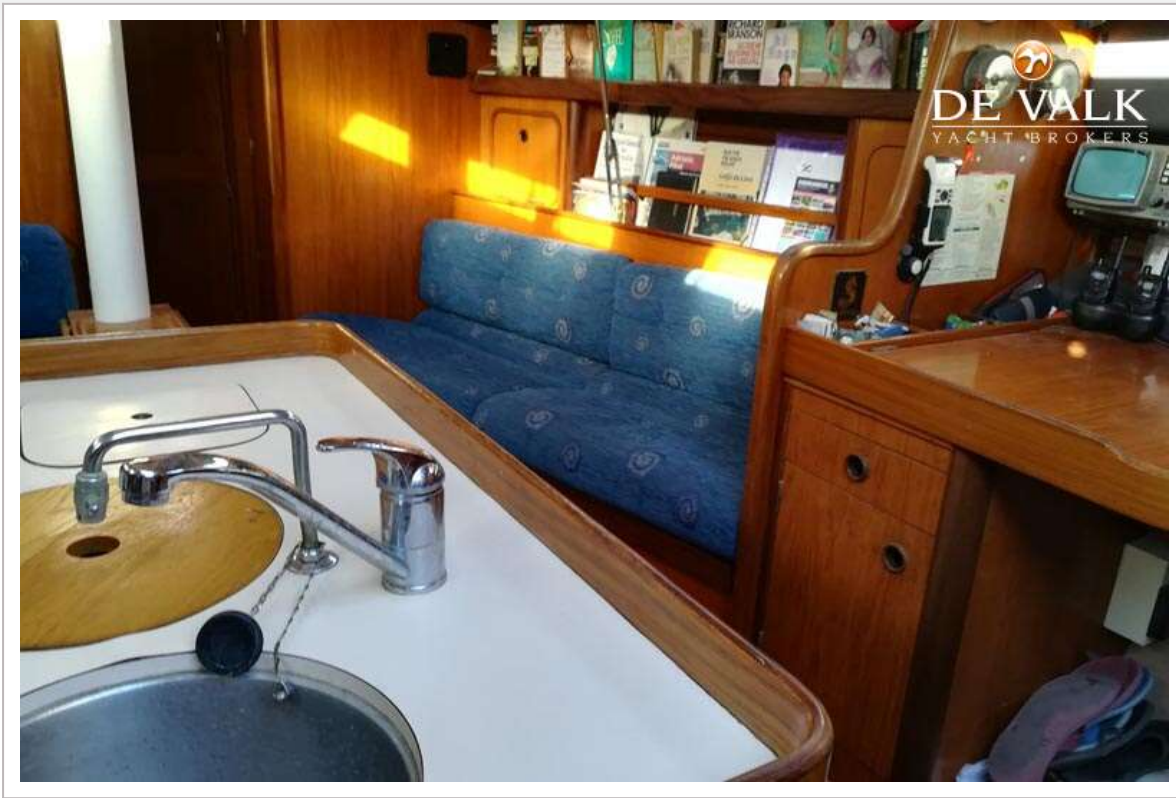
# BENETEAU FIRST 405



# BENETEAU FIRST 405



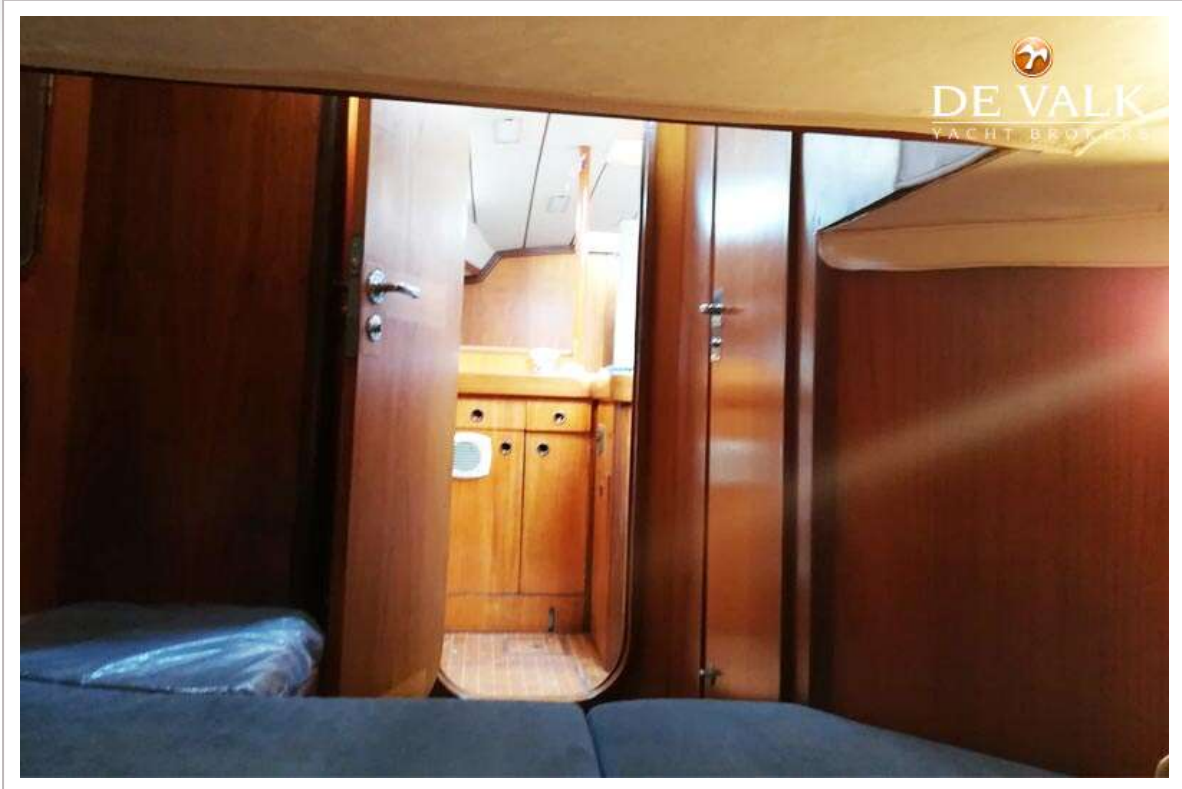
# BENETEAU FIRST 405



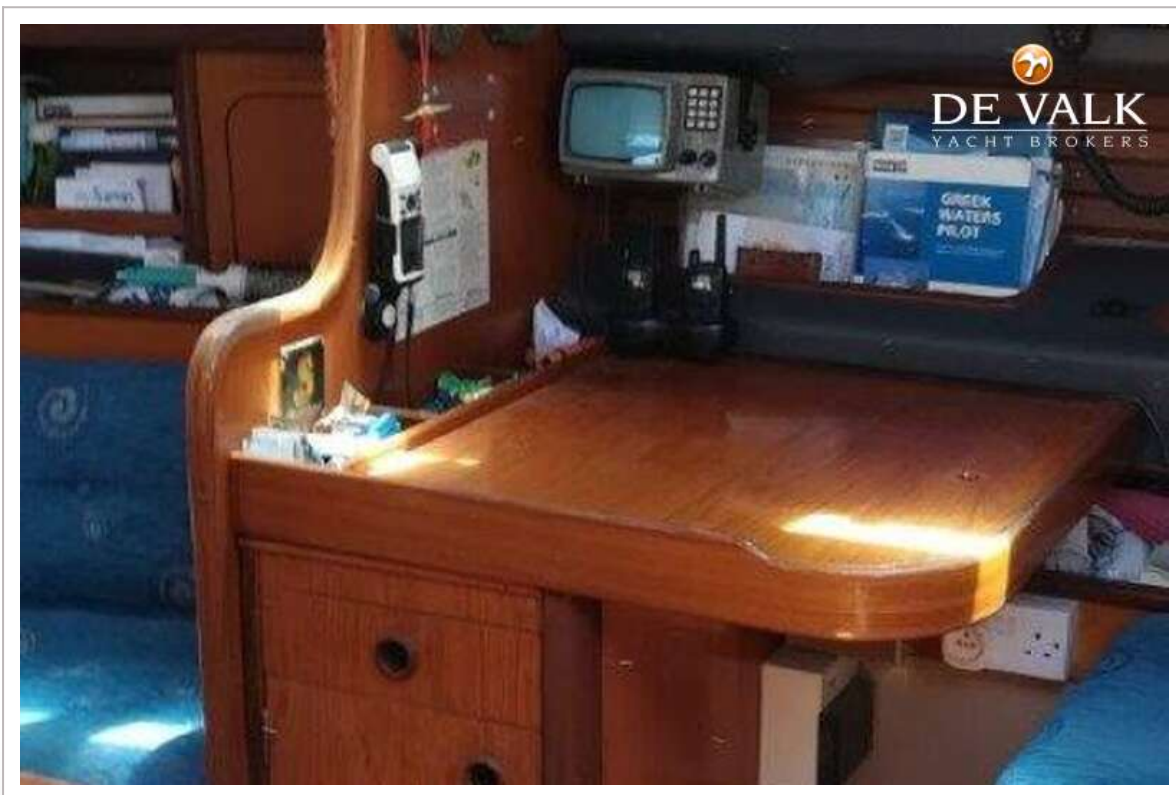
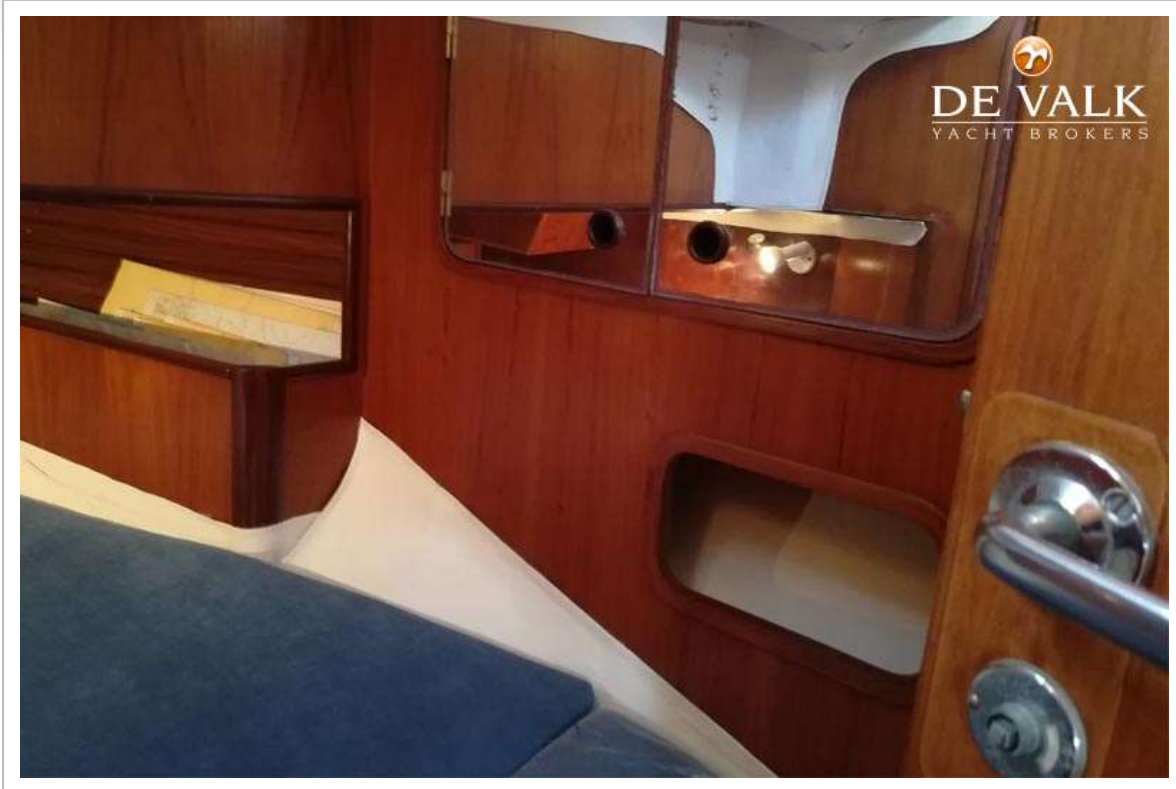
# BENETEAU FIRST 405



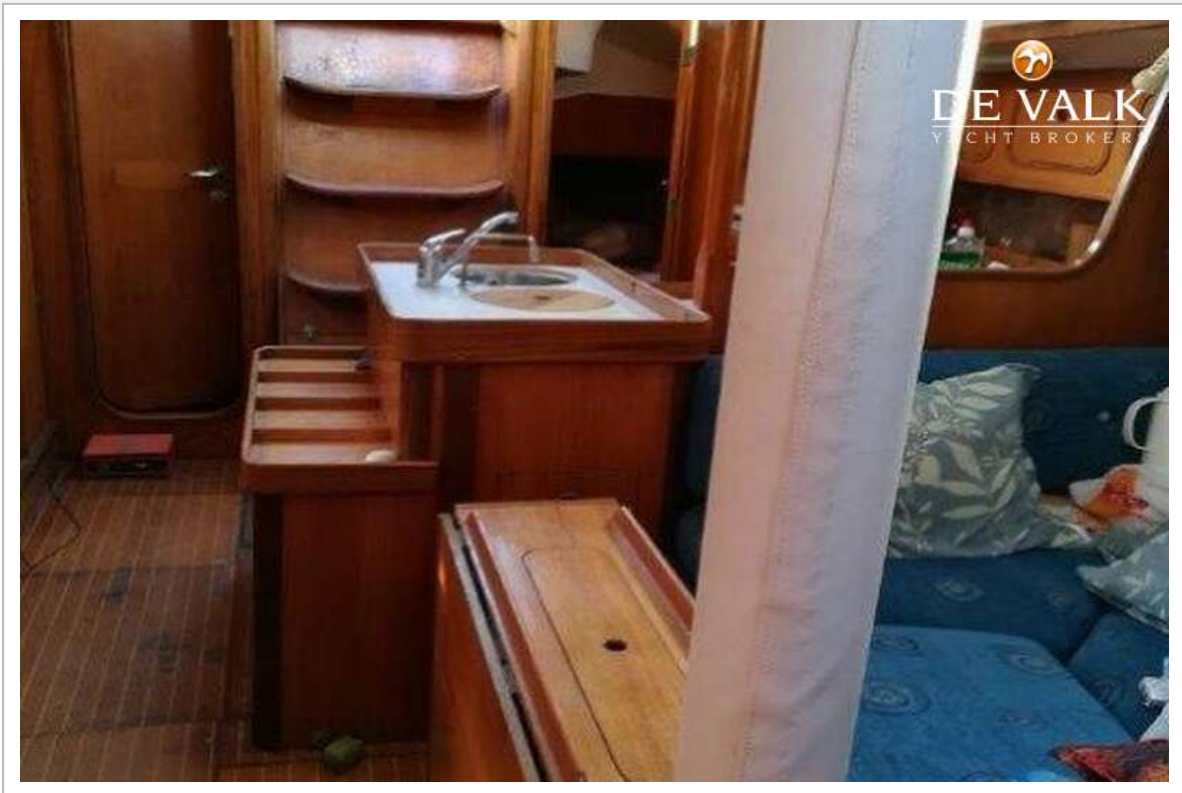
# BENETEAU FIRST 405



# BENETEAU FIRST 405



# BENETEAU FIRST 405



# BENETEAU FIRST 405



# BENETEAU FIRST 405



# BENETEAU FIRST 405

