



DE VALK
YACHT BROKERS



SWAN 57 KETCH S&S



DE VALK
YACHT BROKERS

SWAN 57 KETCH S&S

VAN DE MAKELAAR

Classic Swan Ketch from the legendary Nautor Shipyard in Finland. This Nautor Swan 57, a S&S, "SCARAMOUCHE" was purchased by her current (third) owners in 2020. They have both invested a lot in upgrading the yacht. A good choice for yachtsmen looking for Swan Yachts

Sofia Iliia-Salvanou

SPECIFICATIES

Afmetingen	17.50 x 4.83 x 2.80 (m)	Bouwer	Nautor
Bouwjaar	1978	Hutten	4
Materiaal	Polyester	Slaapplaatsen	7
Motor(en)	1 x PERKINS SABRE M92B/4 Cyllinde diesel	Pk/Kw	75.00 (pk), 55.20 (kw)
Vraagprijs	verkocht (BTW)	Ligplaats	contact verkoopkantoor

CONTACT

Kantoor	De Valk Corfu	Telefoon	(+30) 6948681503
Adres	New Port of Corfu, near Gouvia Marina 490 83 Corfu GR	E-mail	corfu@devalk.nl

DISCLAIMER

Hoewel er uiterste zorg besteed is aan de correctheid, volledigheid en actualiteit van onze informatie kunnen hieraan geen rechten worden ontleend.



SWAN 57 KETCH S&S

ALGEMEEN

Model	SWAN 57 KETCH S&S
Type	zeiljacht
Lengte (m)	17,50
Lengte waterlijn (m)	13,96
Breedte (m)	4,83
Diepgang (m)	2,80
Bouwjaar	1978
Gebouwd door	Nautor
Land	Finland
Ontwerper	Sparkman & Olin Stephens
Waterverplaatsing (t)	22,4
Ballast (ton)	ja
Bruto tonnage	33,07
Romp materiaal	polyester
Romp kleur	wit
Kiel type	vin kiel Leed
Materiaal opbouw	polyester
Dek materiaal	polyester
Afwerking dek	teak Reinstalled in 2006, thickness 10mm
Antifouling (jaar)	2023
Dekluik	ja
Patrijspoorten	ja
Isolatie	ja
Brandstoftank (liter)	570 (cleaned 2017)
Drinkwatertank (liter)	1000
Stuurwiel	ja
Buiten stuurstand	ja
Noodhelmstok	ja

ACCOMMODATIE



Hutten	4
Slaapplaatsen	7
Vloer	teak
Salon	L Setee to Port sidConduroy covers. Teak battens on hull sides.
Navigatie ruimte	ja
Kaartentafel	ja
Achterkajuit	ja
Dinette	ja
Dinette om te bouwen	To Double berth
Keuken	ja
Aanrechtblad	ja
Spoelbak	roestvast staal Double
Kooktoestel	gas ENO 2 BURNERS 2016 electric & gas. pipes, valves regulator 2016
Oven	ja
Gasdetector	ja
Koelkast	X 2 (TOP OPENING & SIDE DOOR) Cold water pump replaced 2020
Warmwatersysteem	ja
Kommaliewant	ja
Eigenaarshut	tweepersoonsbed Plus single bunk bed. Teak battens on hull sides.Deck hatch.
Kledingkast	ja
Badkamer	en suite
Toilet	en suite Teak grate
Toilet Systeem	elektrisch
Wasbak	in de badkamer
Douche	en suite
Gastenhut 1	stapelbed Double
Kledingkast	ja
Badkamer	apart
Toilet	apart Teak grate



SWAN 57 KETCH S&S

Wasbak	in de badkamer
Douche	apart
Gastenhut 2	stapelbed Double
Kleerkast	ja
Badkamer	apart
Toilet	apart Teak grate
Wasbak	in de badkamer
Douche	apart
Gastenhut 3	tweepersoonsbed Forward V cabin. Hull sides lined with teak battens
Kleerkast	Hanging lockers
Badkamer	ja
Toilet	apart Teak grate
Wasbak	in de badkamer
Douche	apart
Extra info	Temperature controls for fridges new 2021

MOTOR(EN)

Aantal motoren	1
Merk	PERKINS SABRE
Type	M92B/4 Cyllinde
Pk	75
kW	55.20
Brandstof	diesel
Geïnstalleerd in jaar	2008
Aandrijving	schroefas
Keerkoppeling	PRM Newage gearbox. New 2021
Type schroef	vast
Handlenspomp	Year 2018
Elektrische lenspomp	Automatic Year 2018
Elektrische installatie	ja



Generator	FISHER PANDA New 2020 (220V-240V)
Accu's	ja
Startaccu	Year 2021
Lichtaccu	Year 2020
Generatoraccu	Year 2021
Acculader	Mastervolt Year 2020
Walstroom	ja

NAVIGATIE

Kompas	ja
Dieptemeter	ja
Log	ja
Windmeetset	ja
Marifoon	ja
Autopiloot	ja
GPS	ja
Epirb	Needs service
Navigatieverlichting	ja

UITRUSTING

Buiskap	ja
Bimini	Cockpit
Zonnetent	Bridge deck/deck up to main mast
Zwemtrap	ja
Loopplank	ja
Anker	CQR ploegschaar Remote control for winch & chain counter Year 2016
Ankerketting	Approx 70 m Year 2014
Ankerlier	LOFRANS FALCON Year 2020
Bijboot	AVON inflatable
Buitenboordmotor	YAMAHA 2,5 Hp



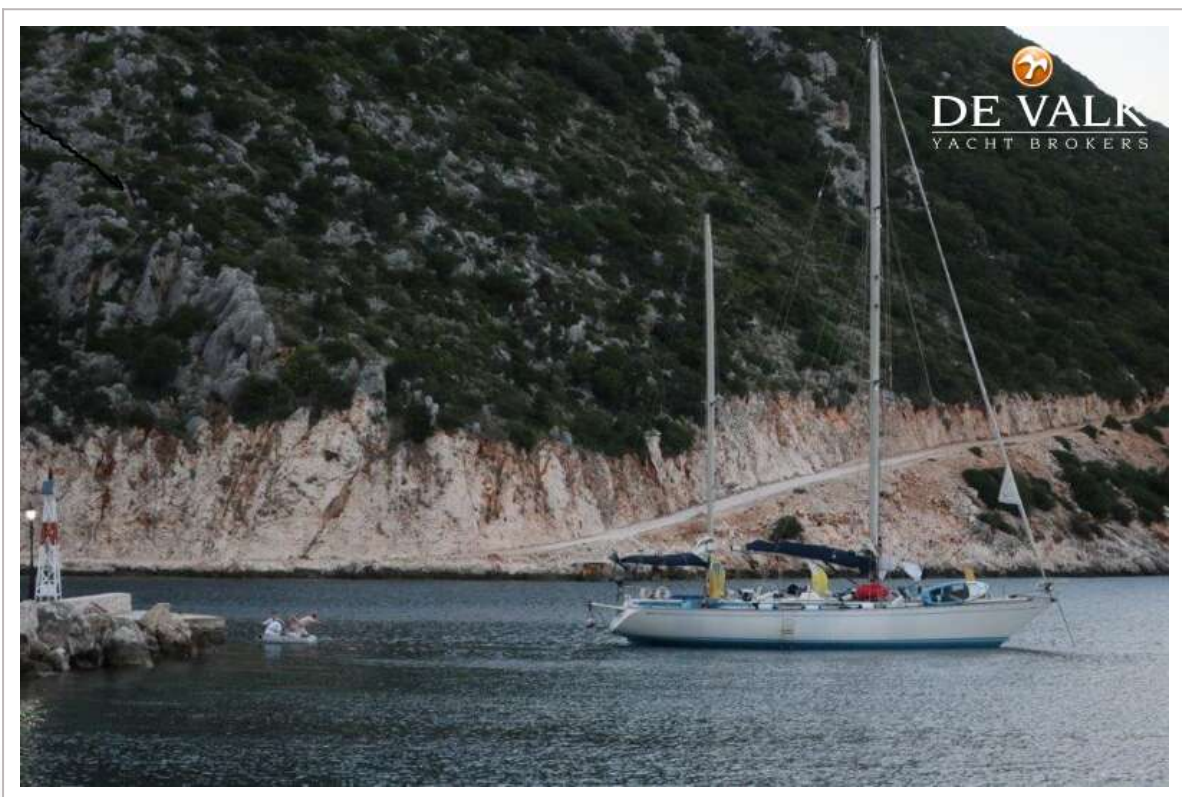
Zeereling	roestvast staal
Zij-instap in reling	ja
Reddingsvlot	Container serviced 2023 SEATEC RESCUEISLAND OFFSHORE2018
Reddingsvlot laatst gekeurd	2023
Zwemvesten	ja
Stootkussens	X 8 New 2023
Landvasten	ja
TV	ja
Radio	ja
Kuipspeakers	ja
Brandblusser	ja
Extra info	All sea cocks & toilet pipes replaced 2015
Extra info	New BOILER 2018
Extra info	SEATEC Tender (aerotender) 2018

TUIGAGE

Tuigage	Reconditioned standing & running rigging, mast & boom in 1995
Staad want	Year 1999 annually checked
Materiaal mast	aluminium
Grootzeil	Year 2002 (serviceable but needs replacement). Slab reefing.
Bezaan	Year 2002 (good condition)
Genua	Year 2002 (due replacement)
Spinnaker	Date unknown. Spinnaker poles: X 2
Stagzeil	Date unknown



SWAN 57 KETCH S&S



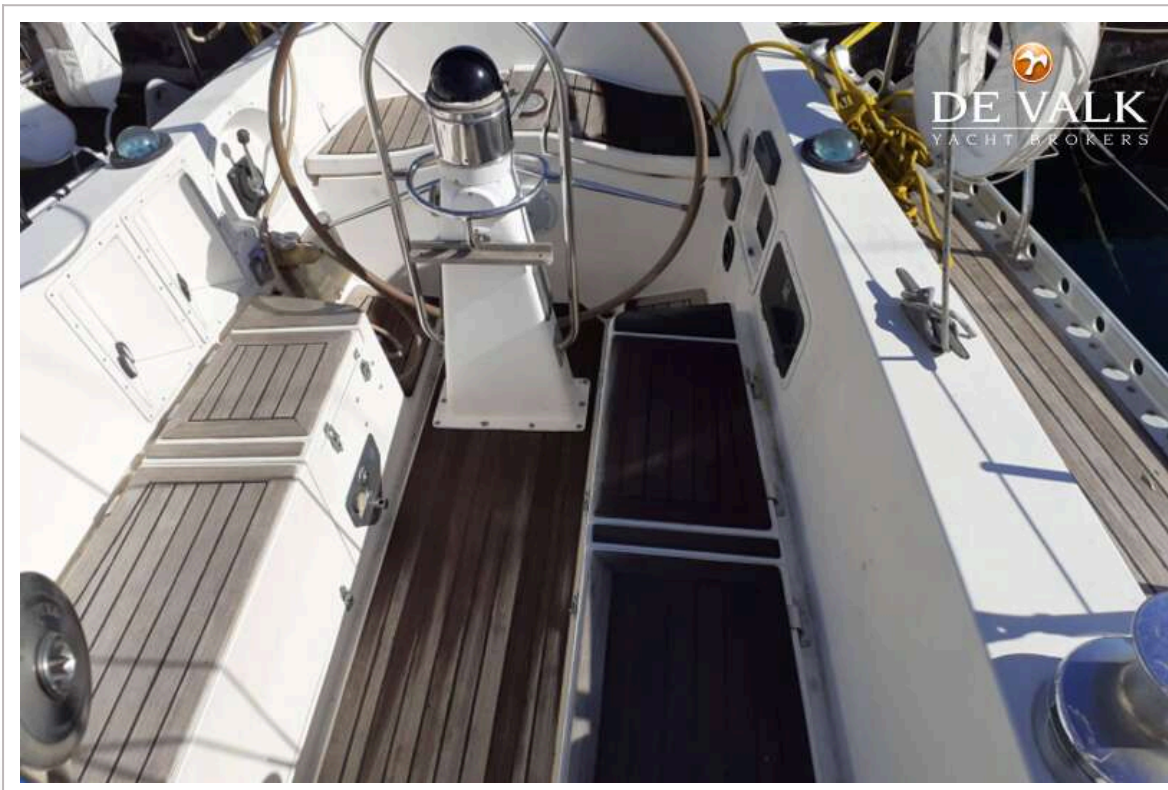
SWAN 57 KETCH S&S



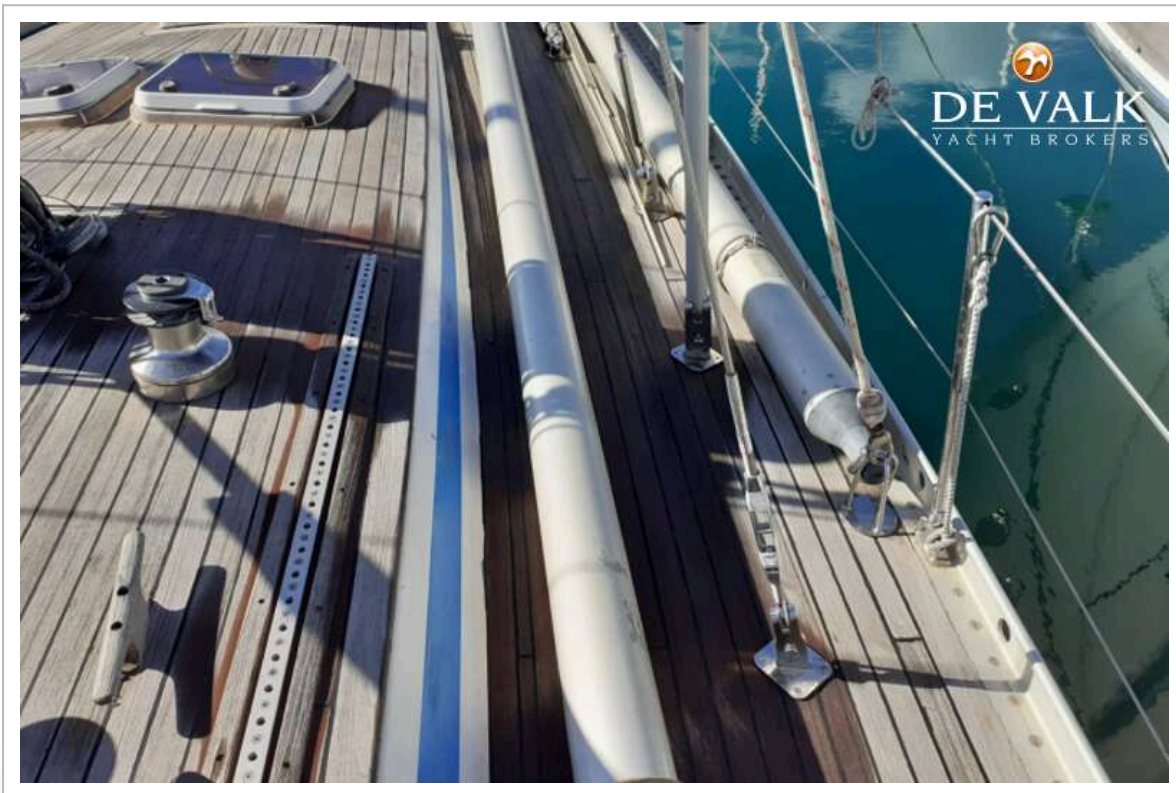
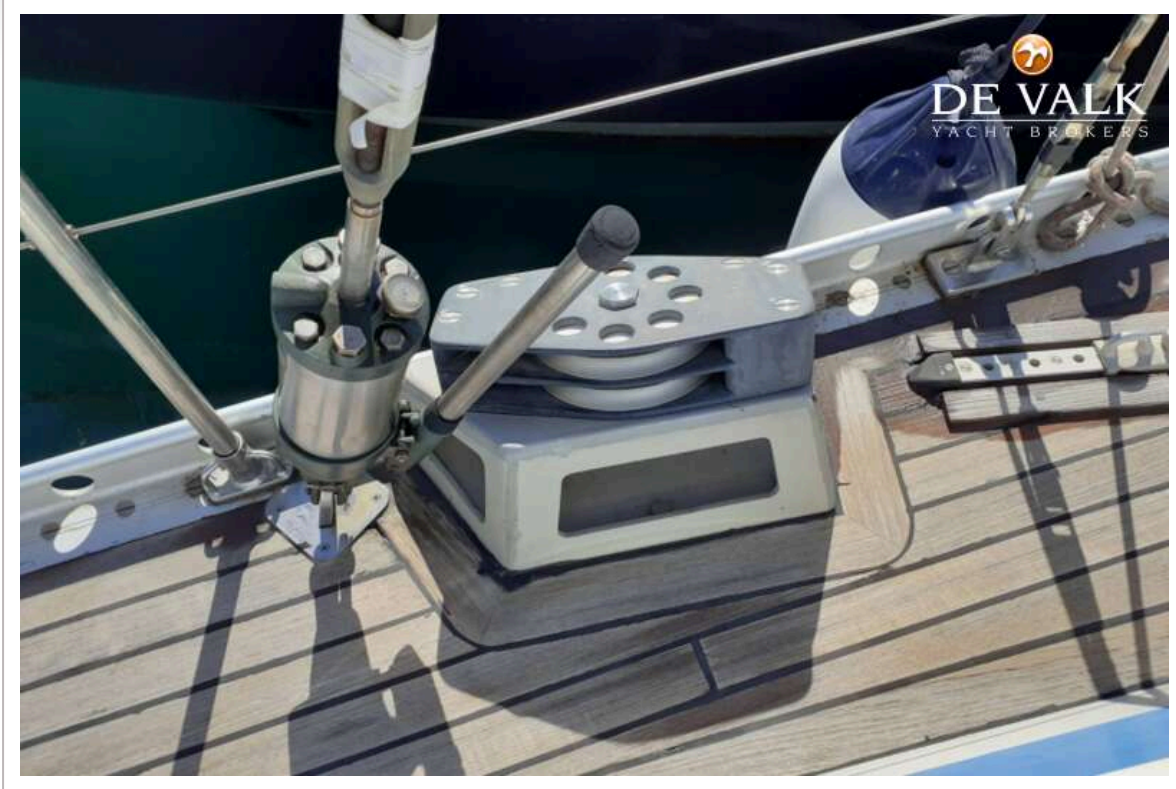
SWAN 57 KETCH S&S



SWAN 57 KETCH S&S



SWAN 57 KETCH S&S



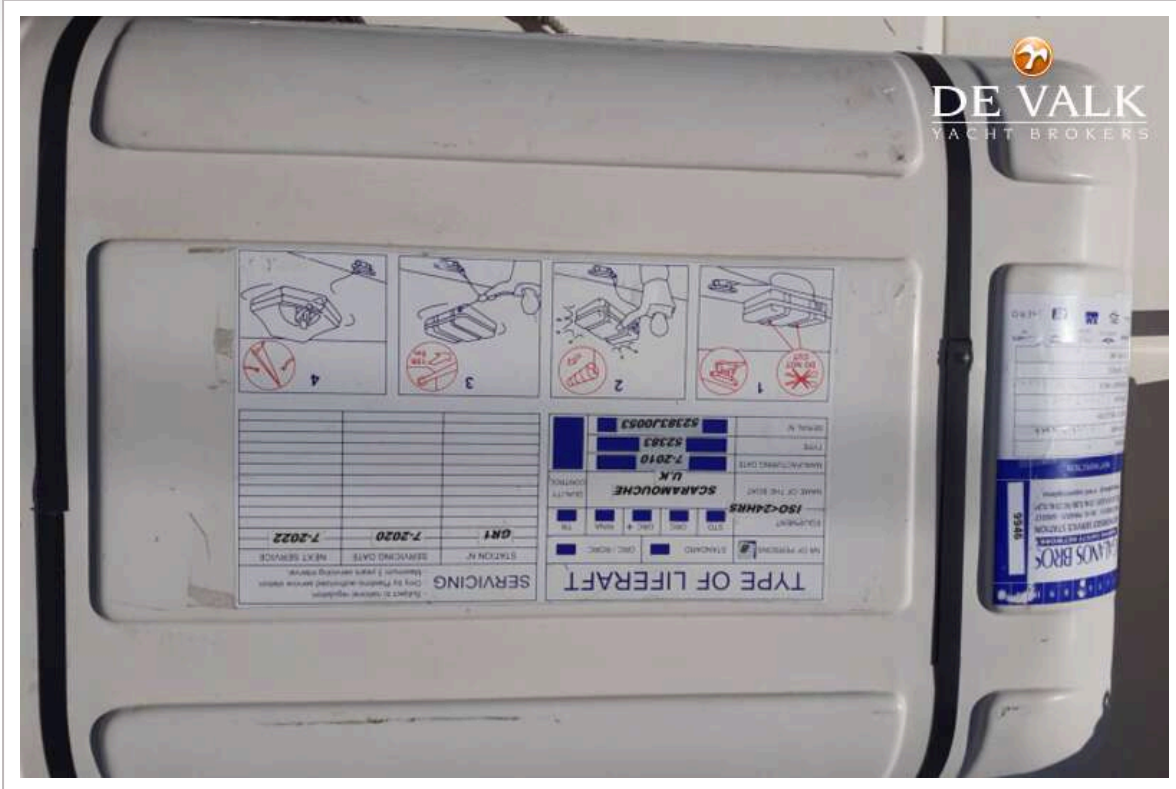
SWAN 57 KETCH S&S



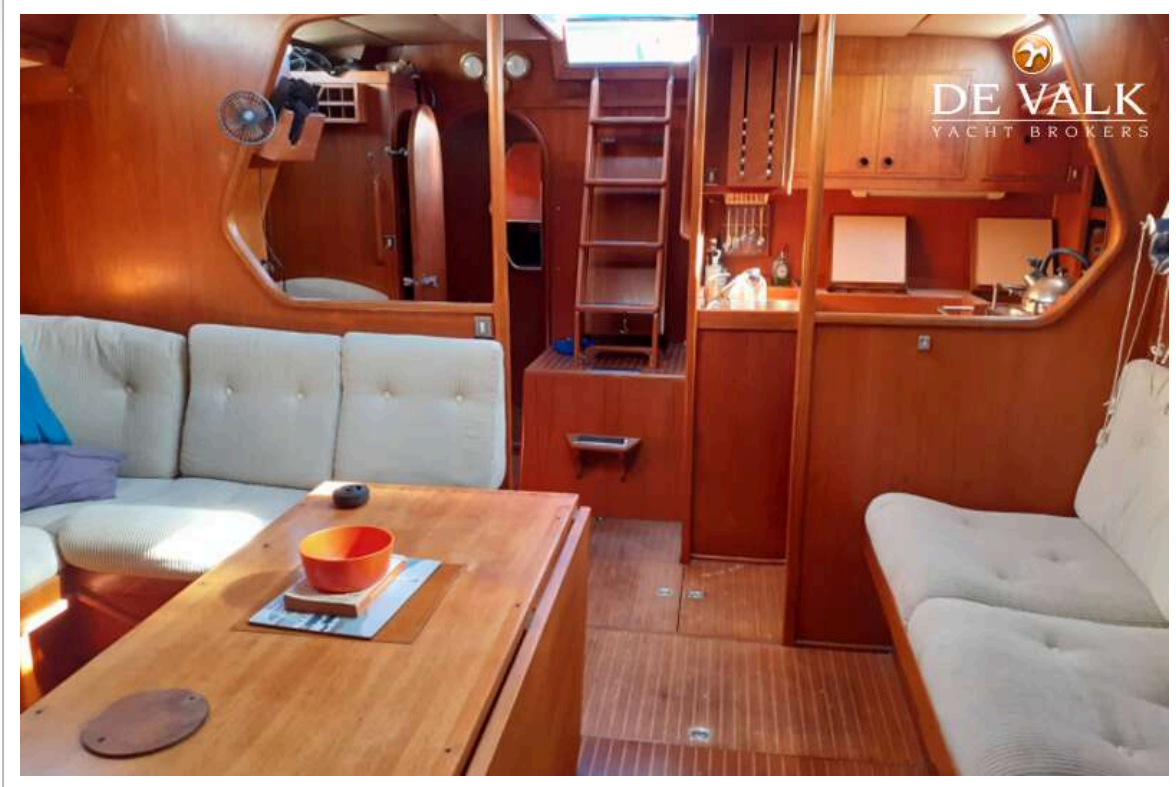
SWAN 57 KETCH S&S



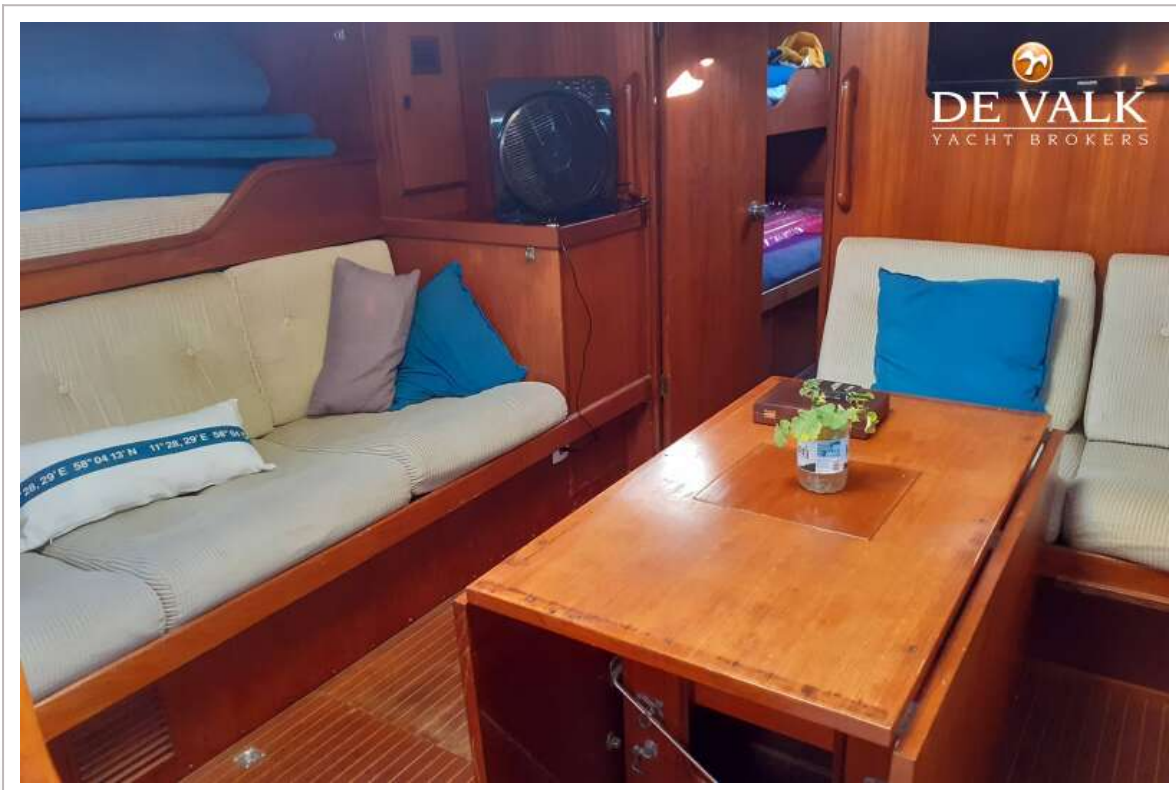
SWAN 57 KETCH S&S



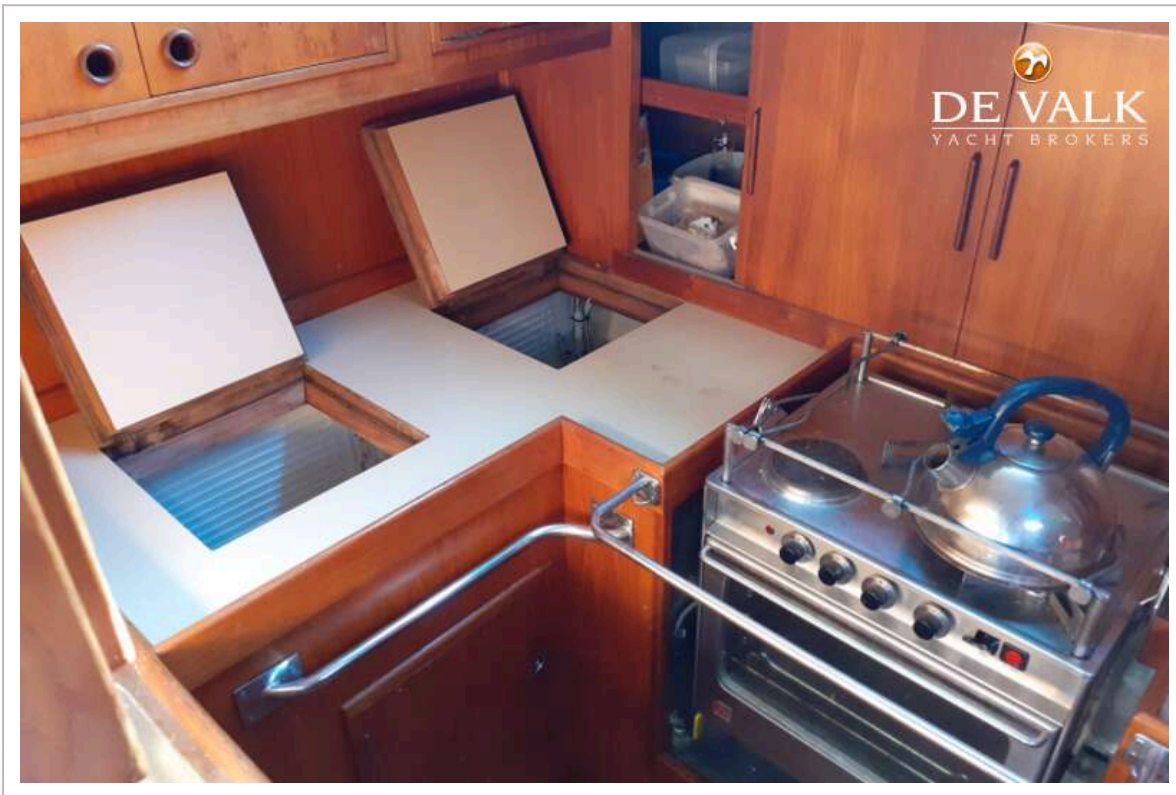
SWAN 57 KETCH S&S



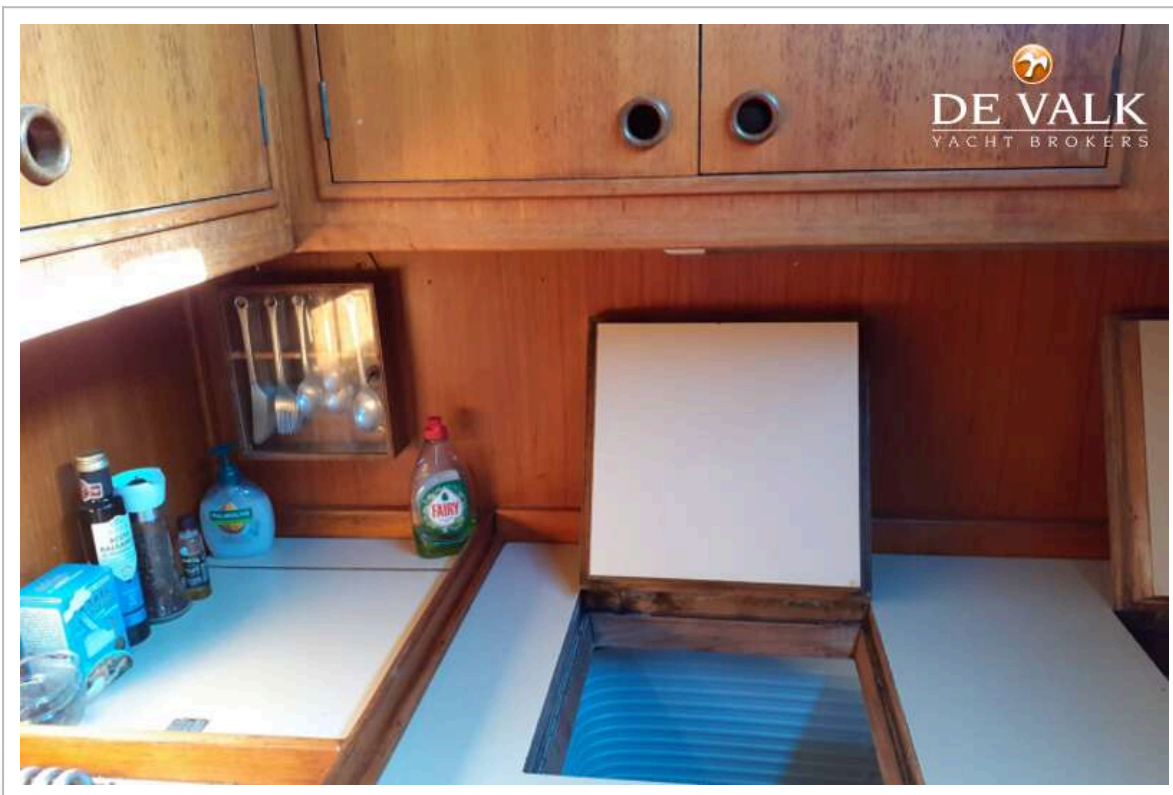
SWAN 57 KETCH S&S



SWAN 57 KETCH S&S



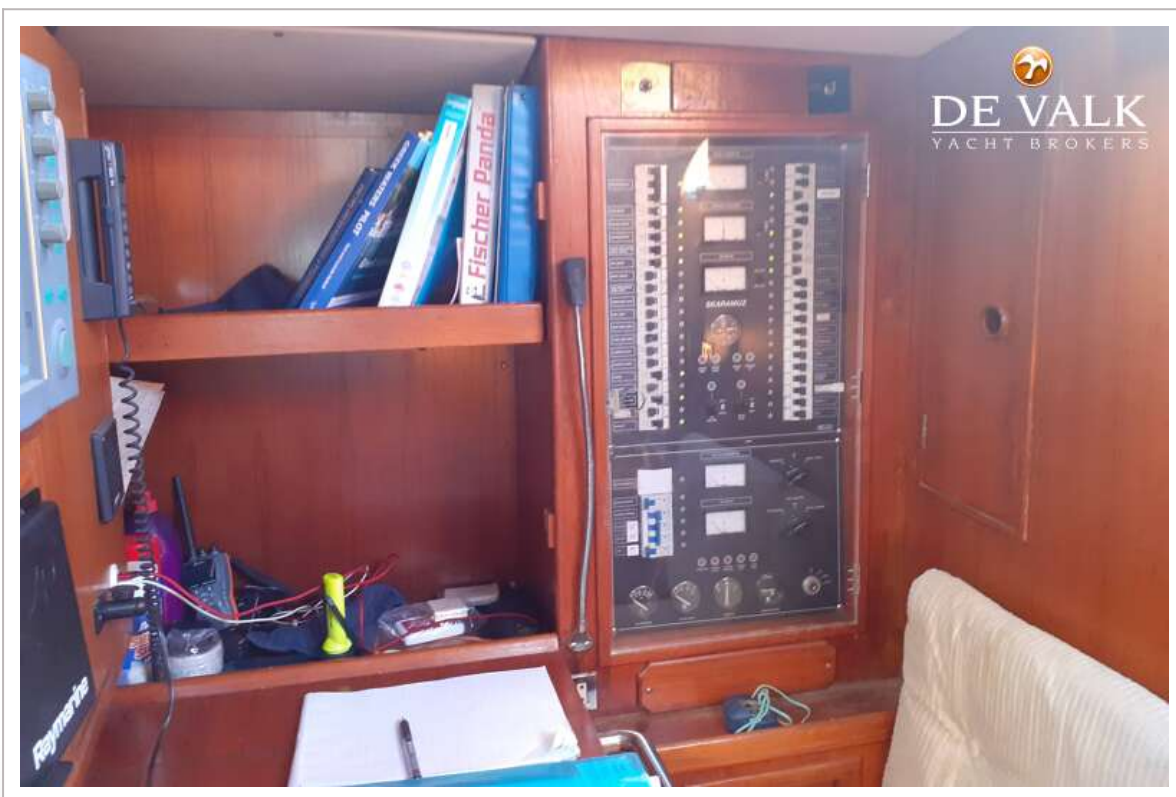
SWAN 57 KETCH S&S



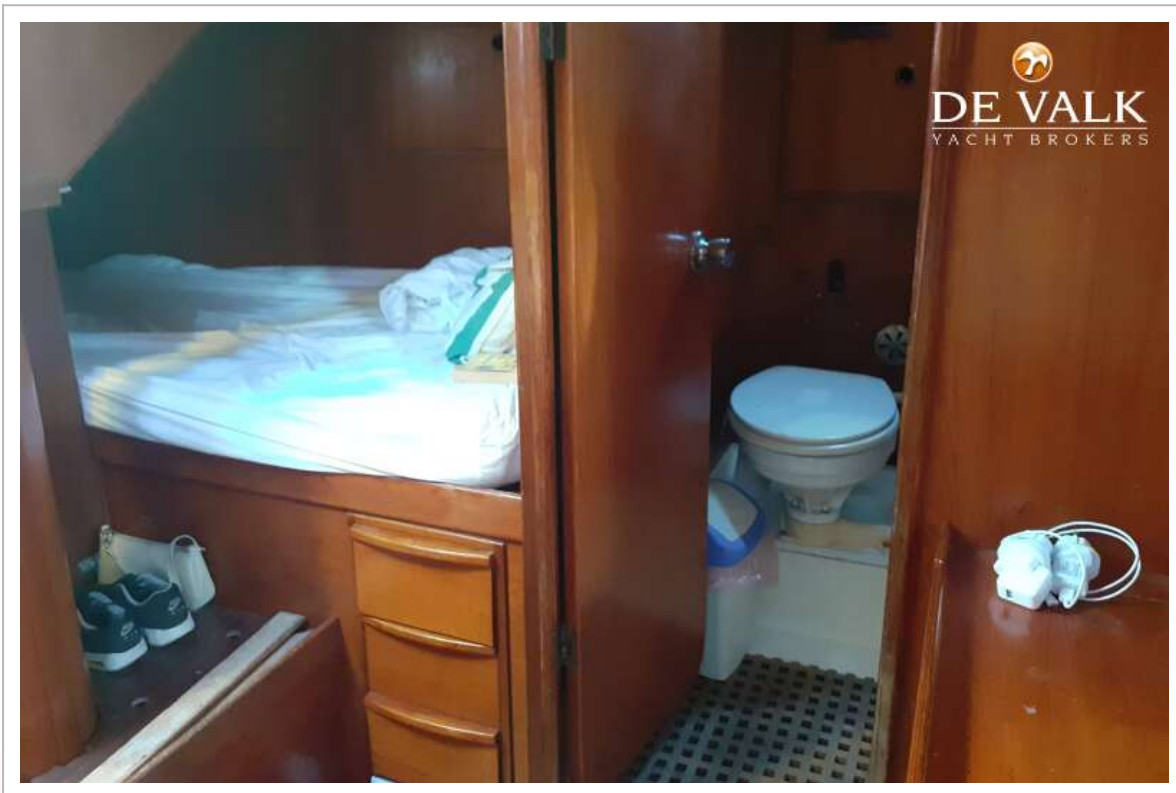
SWAN 57 KETCH S&S



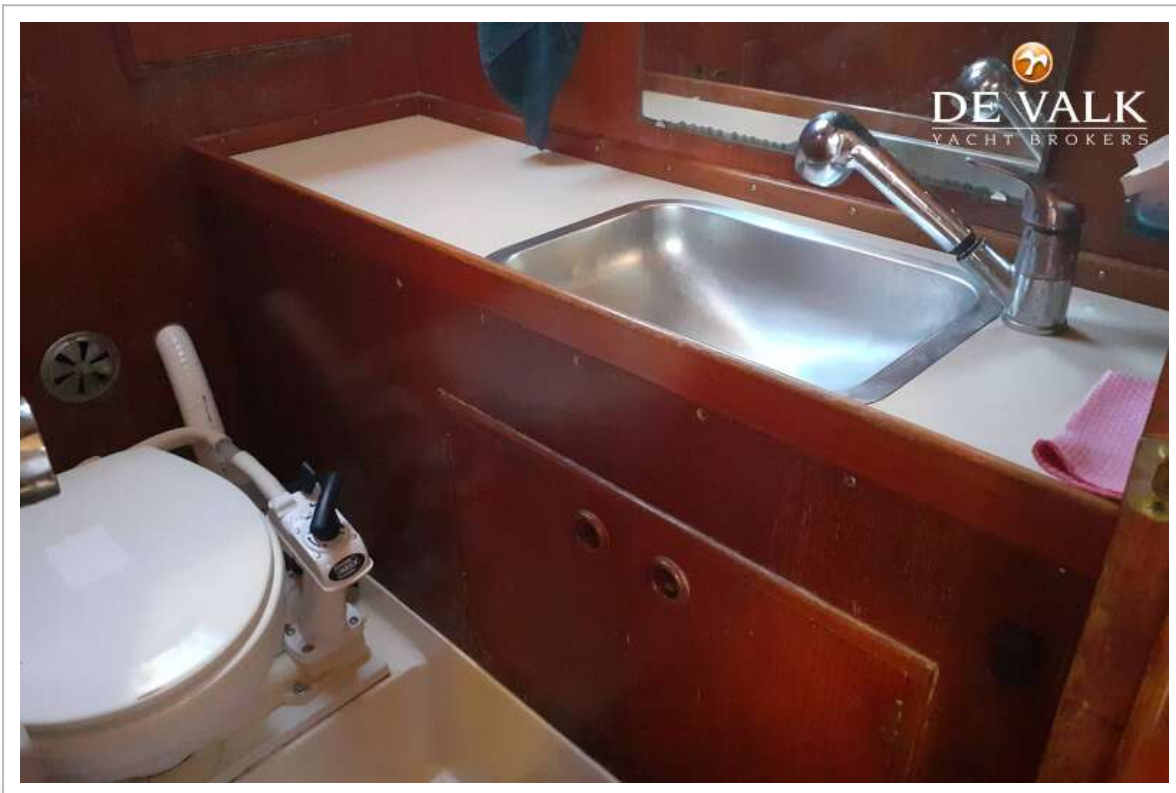
SWAN 57 KETCH S&S



SWAN 57 KETCH S&S



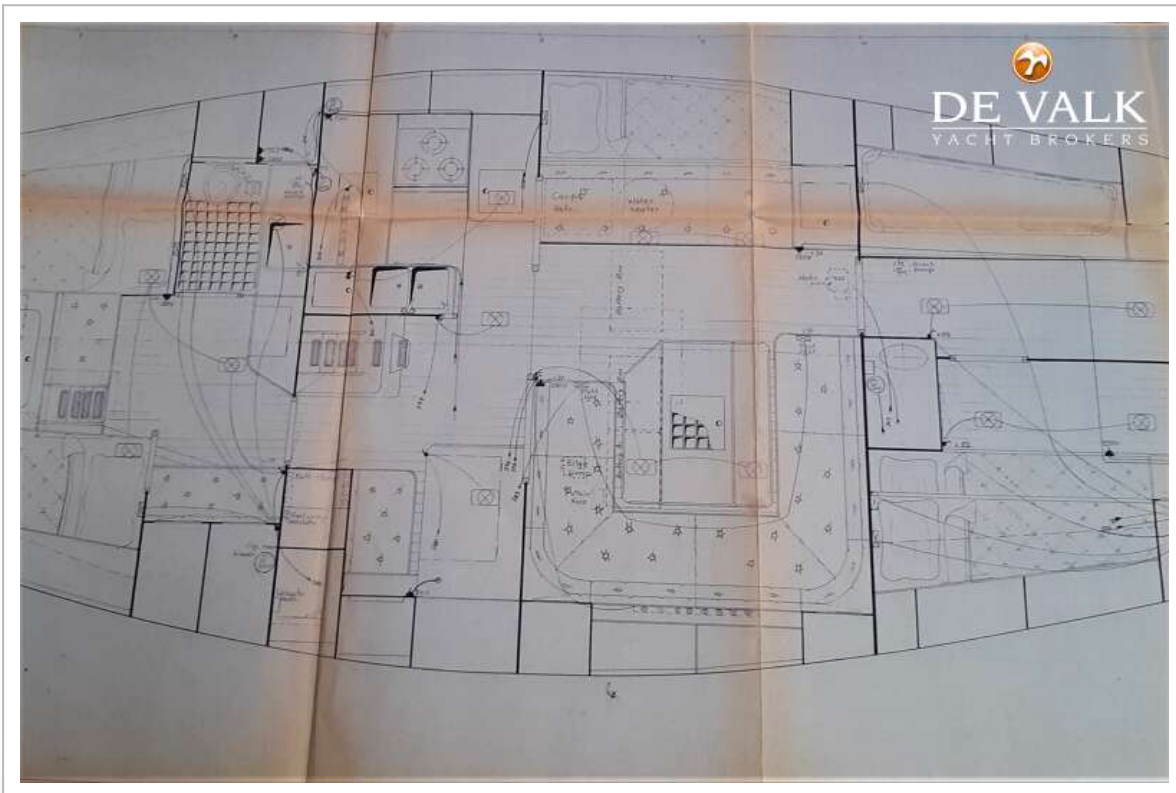
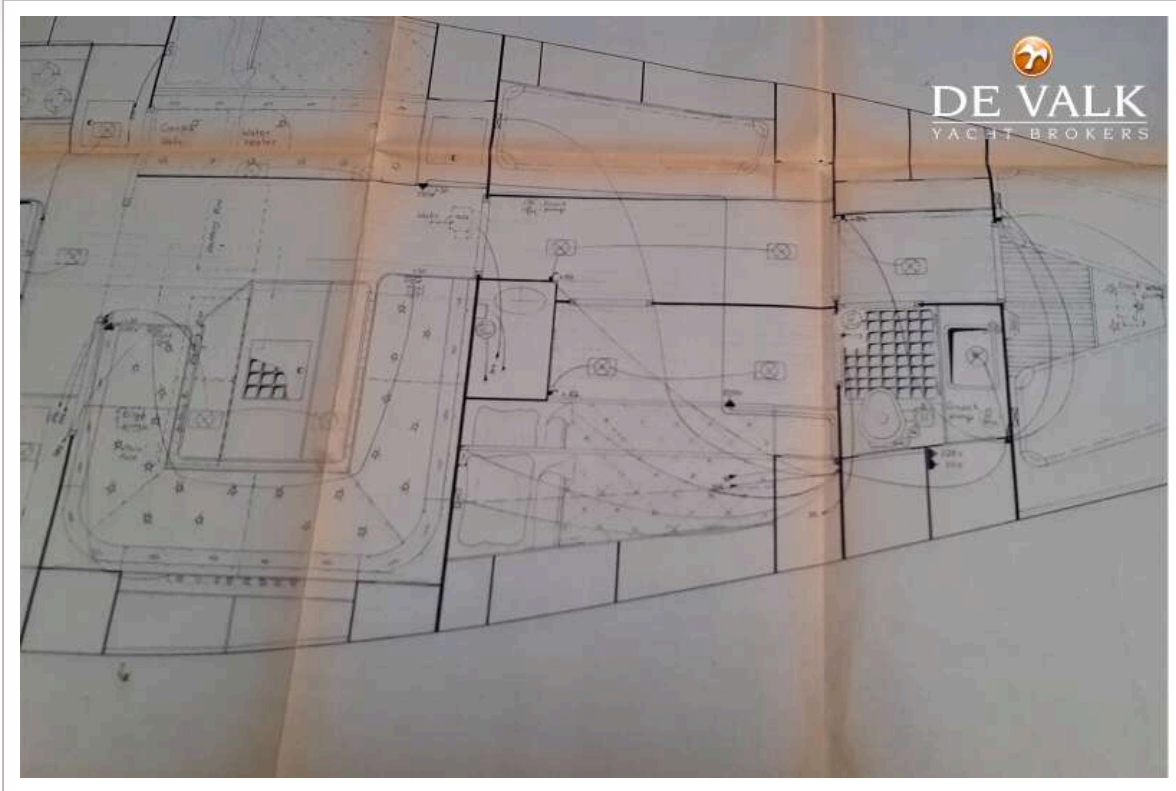
SWAN 57 KETCH S&S



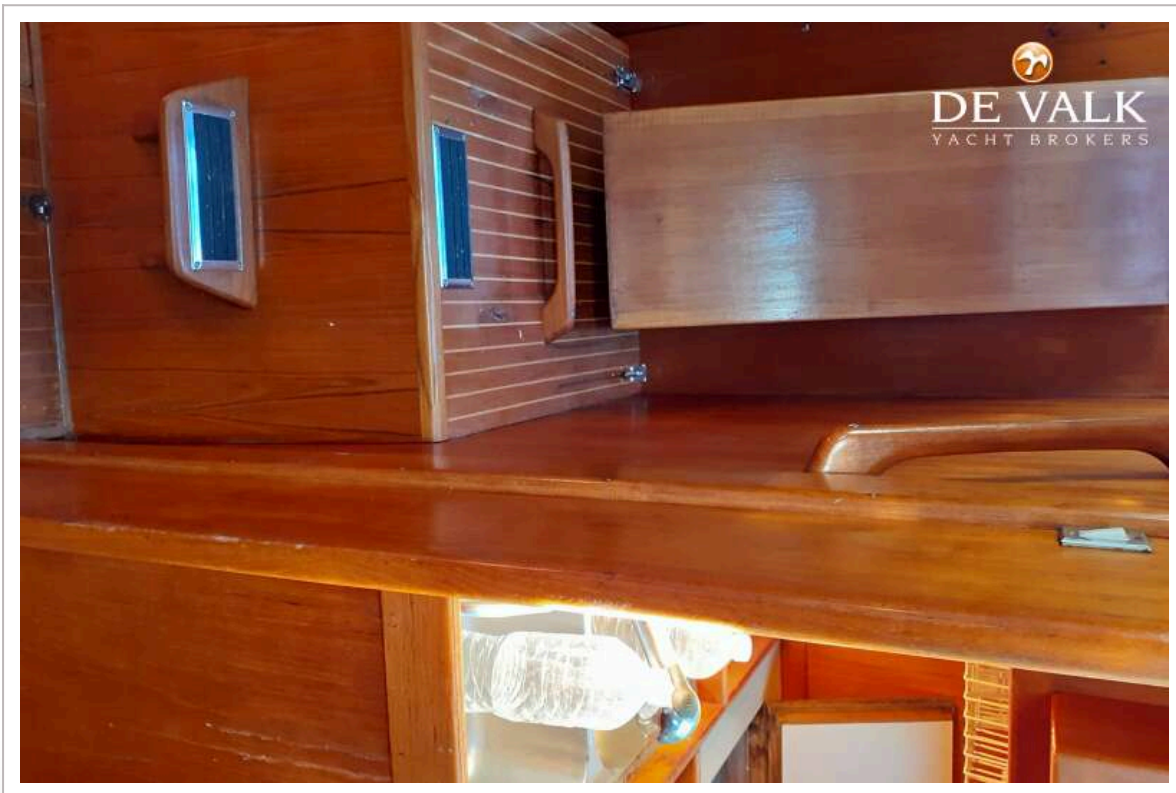
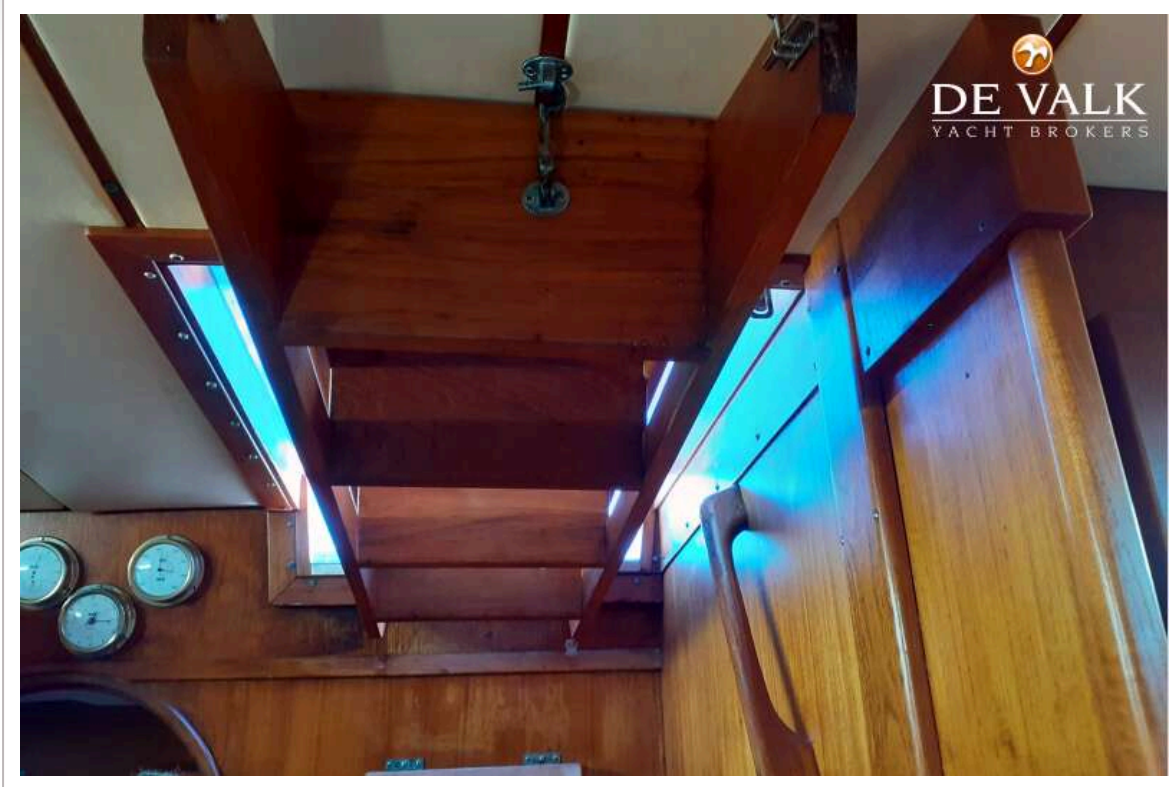
SWAN 57 KETCH S&S



SWAN 57 KETCH S&S



SWAN 57 KETCH S&S



SWAN 57 KETCH S&S

