



DE VALK
YACHT BROKERS



BURMESTER SEEFAHRTKREUZER 50M2 WINDFALL



DE VALK
YACHT BROKERS

BURMESTER SEEFAHRTKREUZER 50M2 WINDFALL

VAN DE MAKELAAR

Stein Dubbeldam

SPECIFICATIES

Afmetingen	12.12 x 2.65 x 1.85 (m)	Bouwer	Burmester
Bouwjaar	1937	Hutten	1
Materiaal	Hout	Slaapplaatsen	5
Motor(en)	1 x Nanni 3-75HE diesel	Pk/Kw	23.00 (pk), 16.93 (kw)
Vraagprijs	€ 15.000 (BTW Vrijgesteld)	Ligplaats	elders / niet bij verkoopkantoor

CONTACT

Kantoor	De Valk Hindeloopen B.V.	Telefoon	+31 514 52 40 00
Adres	Oosterstrand 1 8713 JS Hindeloopen NL	E-mail	hindeloopen@devalk.nl

DISCLAIMER

Hoewel er uiterste zorg besteed is aan de correctheid, volledigheid en actualiteit van onze informatie kunnen hieraan geen rechten worden ontleend.



BURMESTER SEEFAHRTKREUZER 50M2 WINDFALL

ALGEMEEN

Model	BURMESTER SEEFAHRTKREUZER 50M2 WINDFALL
Type	zeiljacht
Lengte (m)	12,12
Breedte (m)	2,65
Diepgang (m)	1,85
Doorvaarhoogte (m)	15,00
Stahoogte (m)	1,75
Bouwjaar	1937
Gebouwd door	Burmester
Land	Duitsland
Ontwerper	Abbeking & Rasmussen, Abrecht
Waterverplaatsing (t)	7,5
Ballast (ton)	gietijzer 3,5
CE norm	NA
Romp materiaal	hout
Romp kleur	wit
Rompvorm	S-spant
Kiel type	doorlopende kiel
Materiaal opbouw	hout Honduras mahogany
Stootlijst	roestvast staal
Dek materiaal	Waterproof Plywood
Afwerking dek	teak 7 mm
Afwerking kuip	teak
Antifouling (jaar)	2025
Dorades	2x
Raamlijsten	roestvast staal
Dekluik	1
Brandstoftank (liter)	kunststof 40
Drinkwatertank (liter)	50
Grijswatertank (liter)	ja



BURMESTER SEEFAHRTKREUZER 50M2 WINDFALL

Helmstok	ja
Extra info romp	Hull covered with one 300 G 2D in epoxy & double below waterline
Extra info verfsysteem	SP systems
Extra info	New rudder with bearing on the keel,

ACCOMMODATIE

Hutten	1
Slaapplaatsen	5
Interieur	mahonie Zipo
Indeling	Classic
Vloer	hout
Salon	ja
Stahoogte salon (m)	Up to 1,88 under skylight
Navigatie ruimte	ja
Ombouwbare kooi	2 x
Keuken	ja
Aanrechtblad	hout
Spoelbak	roestvast staal
Koelkast	ja
Waterdruksysteem	elektrisch
Eigenaarshut	v-bed
Lengte bed (m)	200
Kledingkast	hangend en legplanken
Badkamer	gedeeld
Toilet	gedeeld
Toilet Systeem	handbediening
Wasbak	in de badkamer
Gastenhut 1	eenpersoonsbed Open to salon
Lengte bed (m)	2



BURMESTER SEEFAHRTKREUZER 50M2 WINDFALL

MOTOR(EN)

Aantal motoren	1
Merk	Nanni
Type	3-75HE
Pk	23
kW	16.93
Brandstof	diesel
Geïnstalleerd in jaar	2000
Maximale snelheid (kn)	7
Kruissnelheid (kn)	5
Motoruren	950
Koelsysteem motor	indirecte warmtewisselaar
Aandrijving	schroefas
Schroefas afdichting	Volvo
Motorbediening	handbediend
Keerkoppeling	mechanisch
Type schroef	klap
Schroefbladen	3
Materiaal schroefas	roestvast staal
Smering schroefas	water
Handlenspomp	ja
Elektrische lenspomp	ja
Elektrische installatie	12 V
Accu's	2 in total
Startaccu	1 x 12 V 62 AH 2025
Lichtaccu	1 x Fulmen AGM 92 AH 2025

NAVIGATIE

Kompas	ja
Dieptemeter/log	Autohelm
Windmeetset	Autohelm



BURMESTER SEEFAHRTKREUZER 50M2 WINDFALL

Plotter/GPS	Raymarine Axiom 9"2019, with seotalk 1 STNG conversion kit
Navigatieverlichting	Masthead, Port & Starboard & deck

UITRUSTING

Wintertent	For over the deck
Anker	With light line
Anker 2	With ligh line
Zeereling	ja
Handgreep (opbouw)	ja
Hekstoel	ja
Preekstoel	ja
Reddingsboei	2 horseshoe
Veiligheidslijnen op dek	2
Stootkussens	6

TUIGAGE

Tuigage	fractioneel
Staand want	draad
Materiaal mast	aluminium White
Zalingen	3 sets & diamond
Doorgestoken mast	ja
Grootzeil	2019 Incidence Fibercon AP 40 m2
Grootzeilhuik	ja
Doorgelat grootzeil	Dacron 40 m2 (2000)
Fok	Incedine Fibercon AP both Dacron (2000) both 25 m2
Genua	2019 Incidence fibrocon AP 24m ²
Genua rolreefsysteem	ja
Genua hoes	Rocon 2000
A-symmetrische spi	2019 Incidine A2 Nylon 0,9 oz 77 m ² never used!!!
Achterstagspanner	mechanisch
Genua schootlieren	2 x Lewmar ST 40 2 speed



Multifunctionele lieren

2 x Lewmar 30 ST for running backstays



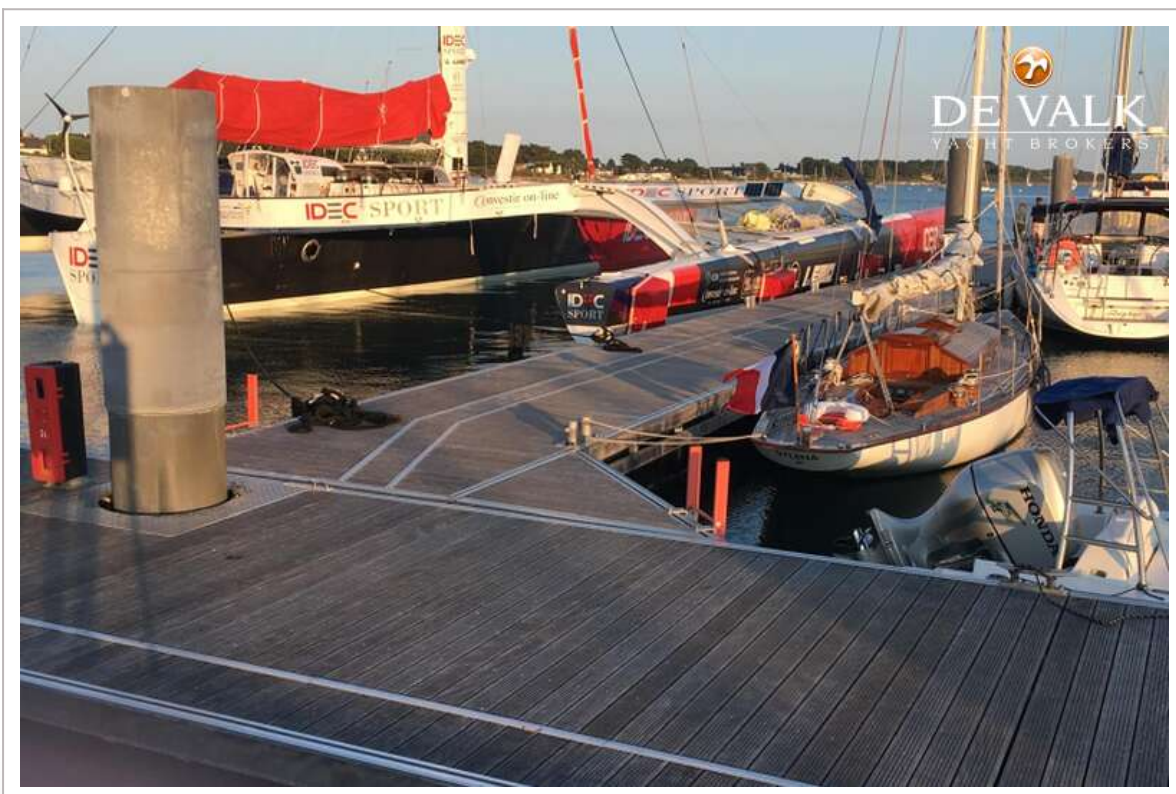
BURMESTER SEEFAHRTKREUZER 50M2 WINDFALL



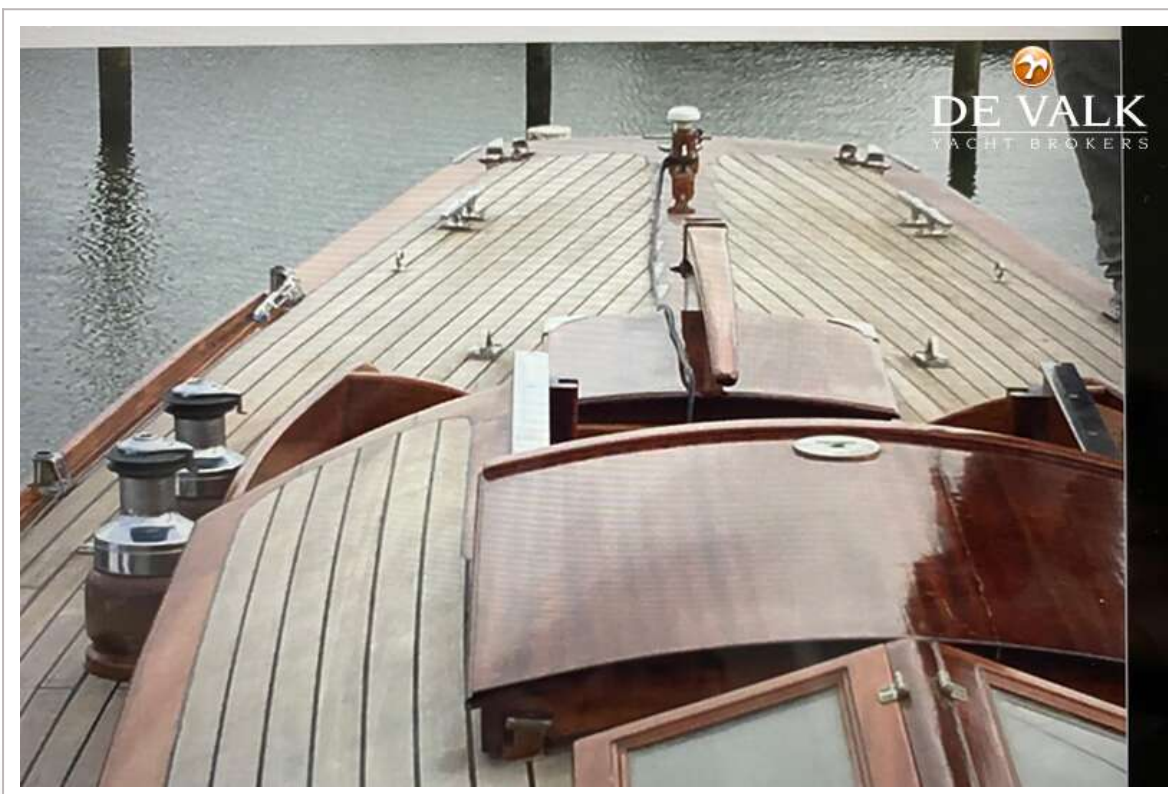
BURMESTER SEEFAHRTKREUZER 50M2 WINDFALL



BURMESTER SEEFAHRTKREUZER 50M2 WINDFALL



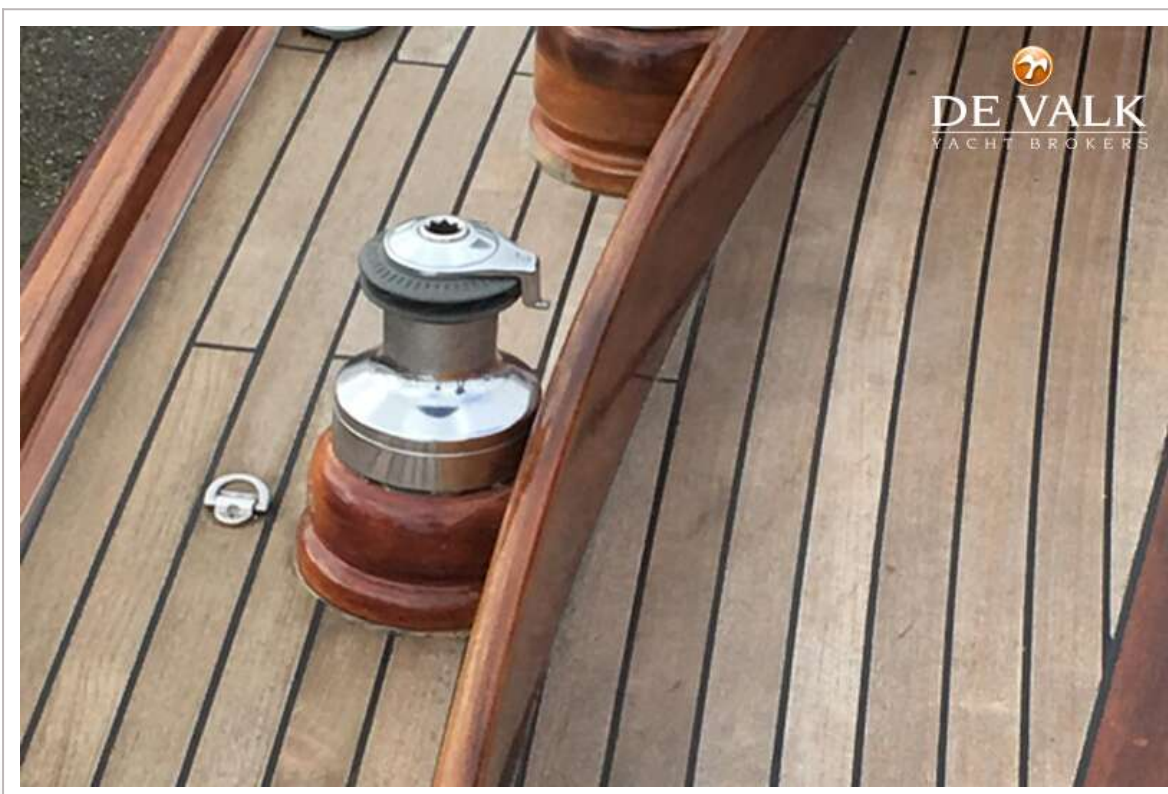
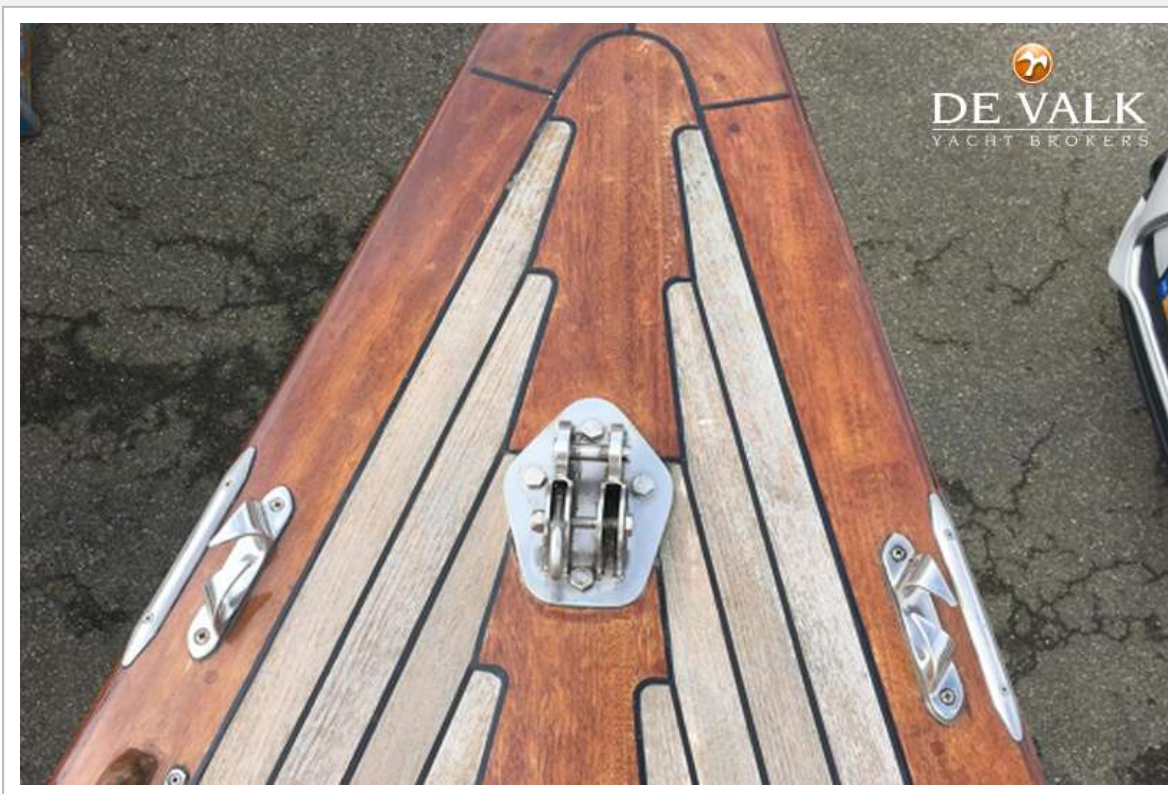
BURMESTER SEEFAHRTKREUZER 50M2 WINDFALL



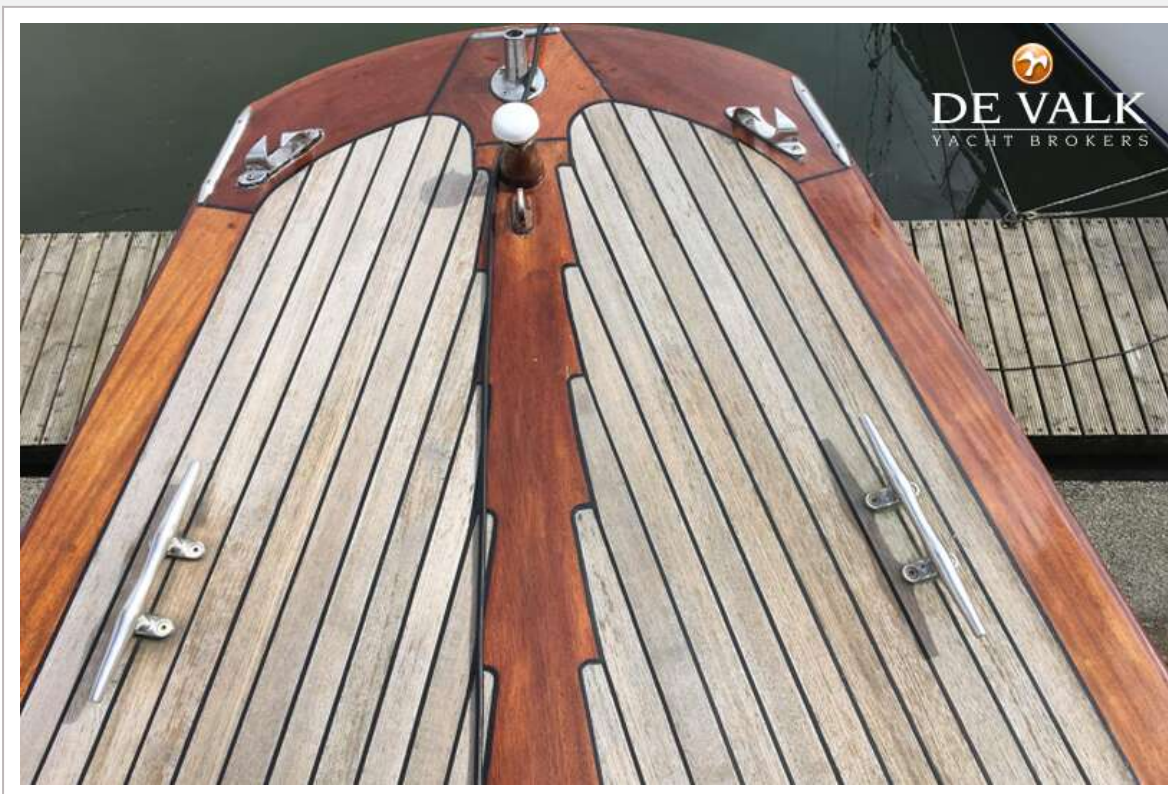
BURMESTER SEEFAHRTKREUZER 50M2 WINDFALL



BURMESTER SEEFAHRTKREUZER 50M2 WINDFALL



BURMESTER SEEFAHRTKREUZER 50M2 WINDFALL



BURMESTER SEEFAHRTKREUZER 50M2 WINDFALL



BURMESTER SEEFAHRTKREUZER 50M2 WINDFALL



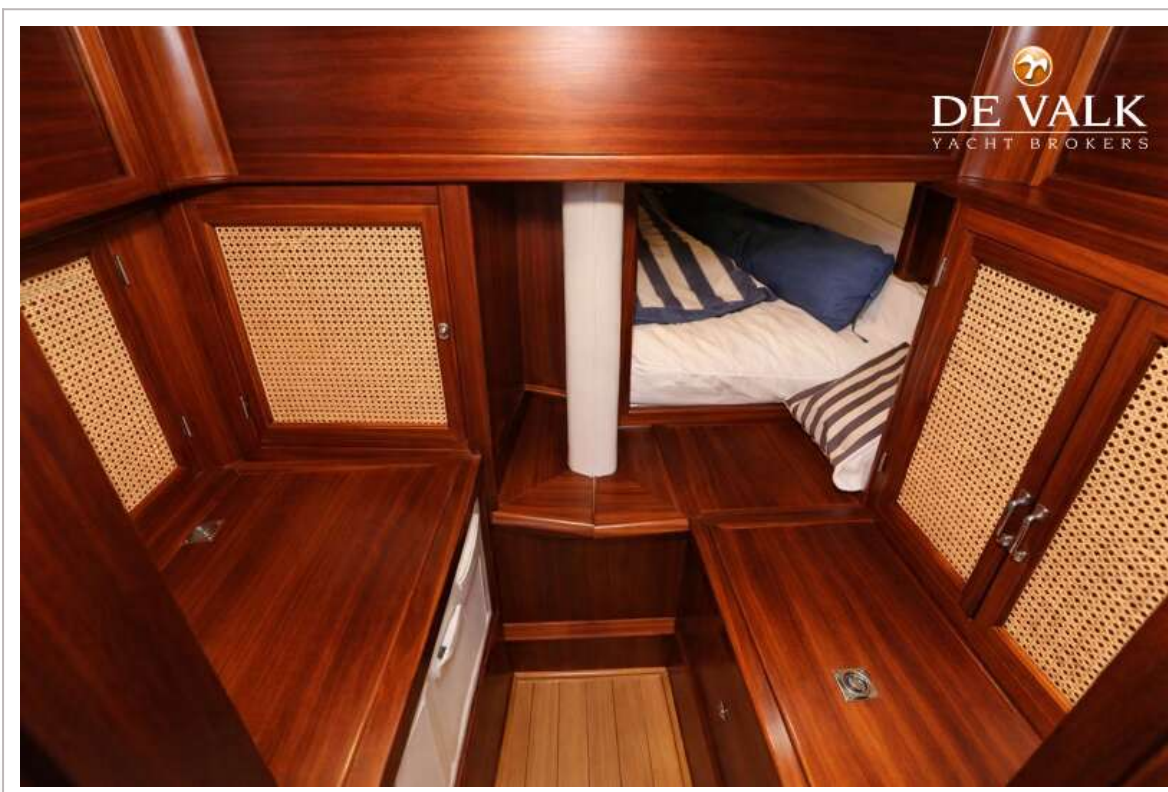
BURMESTER SEEFAHRTKREUZER 50M2 WINDFALL



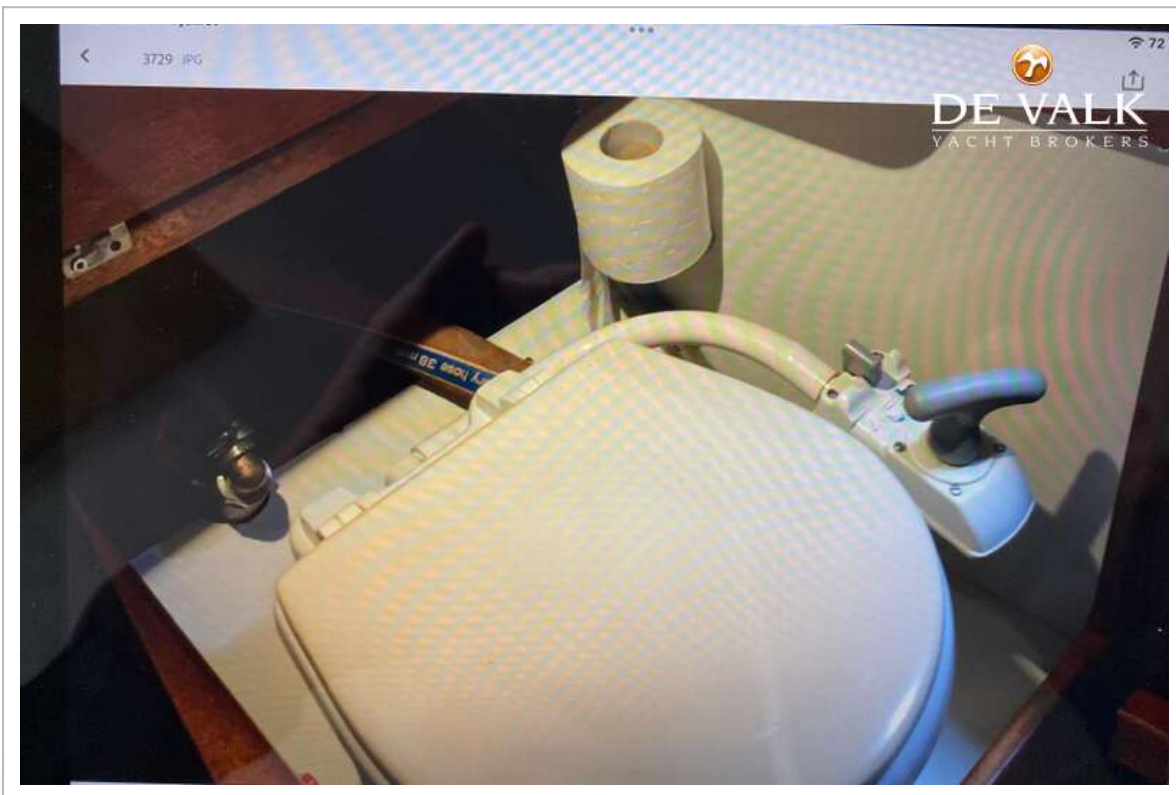
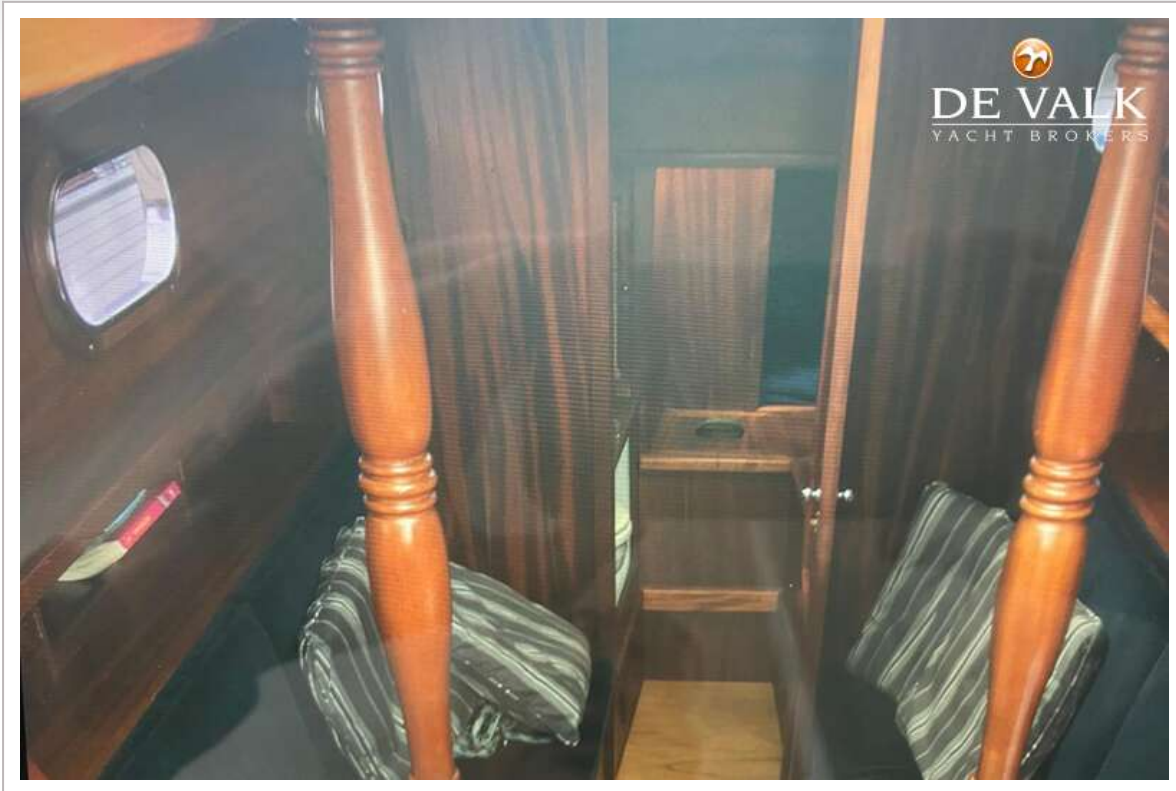
BURMESTER SEEFAHRTKREUZER 50M2 WINDFALL

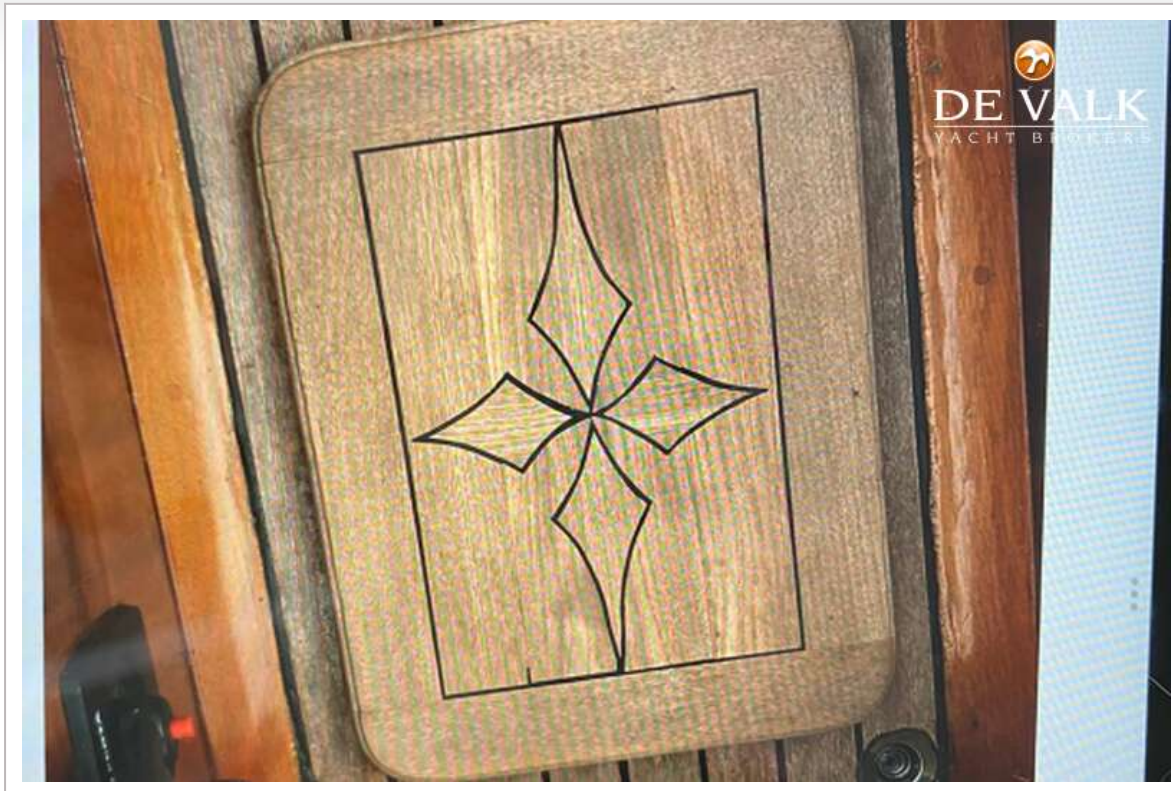


BURMESTER SEEFAHRTKREUZER 50M2 WINDFALL



BURMESTER SEEFAHRTKREUZER 50M2 WINDFALL





Historical Background

The “Windfall” yachts were a fleet of more than 100 high-quality wooden offshore vessels, allocated to the Allied forces as reparations from Germany following the Second World War. Over the next 15 to 20 years, many Royal Navy personnel were introduced to offshore sailing through these vessels.

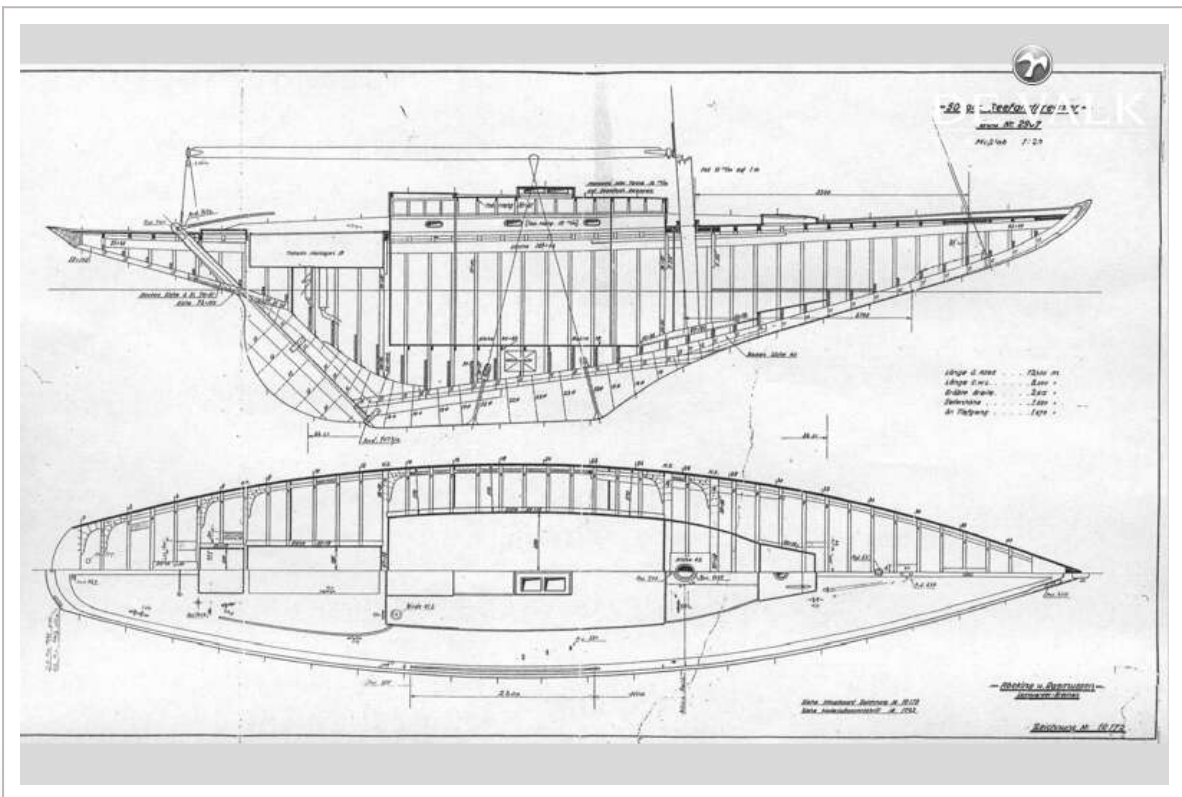
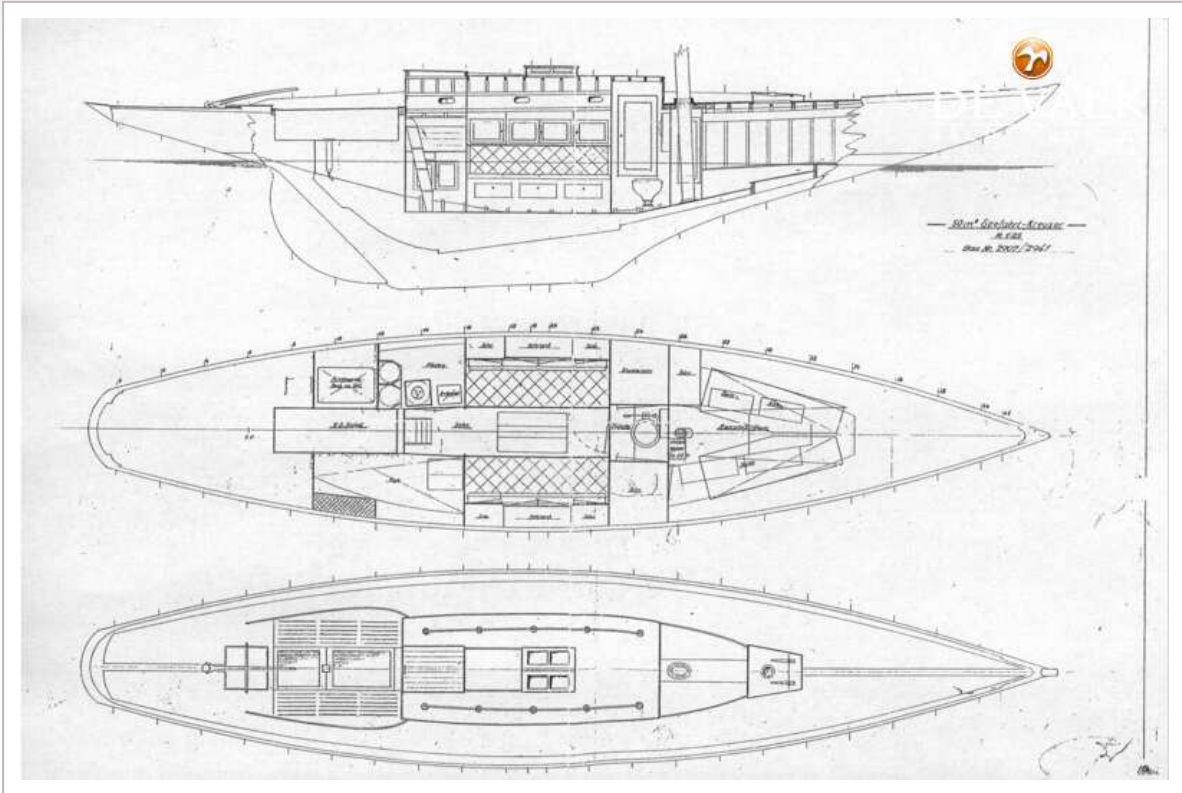
At the end of World War II, a large number of German government-owned yachts were distributed among the victorious nations, with many entering service in British yacht clubs. These vessels became known as the “Windfalls” and were widely used for sail training and adventurous expeditions, particularly in the Baltic Sea.

“Sylena” (V89), originally named “Seahorse” (her German name) and identified by her original sail number V89, is one of these historic yachts. Her story, along with those of other Windfall vessels, is documented in Michael Gudmore’s book *The Windfall Yachts*.

Today, SYLENA remains one of the very few surviving Windfall yachts still actively sailing — a rare and significant piece of maritime history.



BURMESTER SEEFAHRTKREUZER 50M2 WINDFALL



BURMESTER SEEFahrTKREUZER 50M2 WINDFALL

