



DE VALK



PEARSON 424



DE VALK
YACHT BROKERS

VAN DE MAKELAAR

The Pearson range are considered by many to be one of the finest of yachts built in the USA. This model is a serious long keel blue water cruiser constructed to a very high standard. The aft cockpit leads down the Captain's cabin with nav. table with easy access to the engine room. The very open and light galley-salon has it's own very practical stair access to deck, and you will find the guest cabin in the bow. The base is solid and strong, but the boat has jobs pending to bring her to her former glory.

Tue Simon Fasting

SPECIFICATIES

| | | | |
|-------------------|----------------------------------|----------------------|------------------------|
| Afmetingen | 12.90 x 3.96 x 1.60 (m) | Bouwer | Pearson Yachts |
| Bouwjaar | 1979 | Hutten | 2 |
| Materiaal | Polyester | Slaapplaatsen | 6 |
| Motor(en) | 1 x YANMAR 4JHE diesel | Pk/Kw | 44.00 (pk), 32.38 (kw) |
| Vraagprijs | Onder Bieding (BTW Niet betaald) | Ligplaats | bij verkoopkantoor |

CONTACT

| | | | |
|----------------|--|-----------------|---------------------|
| Kantoor | De Valk Barcelona | Telefoon | +34932202825 |
| Adres | Barcelona region Barcelona Spain | E-mail | barcelona@devalk.nl |

DISCLAIMER

Hoewel er uiterste zorg besteed is aan de correctheid, volledigheid en actualiteit van onze informatie kunnen hieraan geen rechten worden ontleend.



ALGEMEEN

| | |
|--------------------------------------|---|
| Model | PEARSON 424 |
| Type | zeiljacht |
| Lengte (m) | 12,90 |
| Breedte (m) | 3,96 |
| Diepgang (m) | 1,60 |
| Bouwjaar | 1979 |
| Gebouwd door | Pearson Yachts |
| Land | Verenigde Staten |
| Ontwerper | William Shaw |
| Waterverplaatsing (t) | 9,5 |
| CE norm | NA |
| Romp materiaal | polyester |
| Romp kleur | gebroken wit |
| Rompvorm | Mono hull |
| Kiel type | doorlopende kiel Encapsulated lead in one mold half keel design |
| Materiaal opbouw | polyester |
| Afwerking dek | anti-slip verf Kiwi grip |
| Afwerking opbouw | anti-slip verf |
| Afwerking kuip | anti-slip verf |
| Antifouling (jaar) | 2023 |
| Brandstoftank (liter) | 302 in 1 tank new 2019 |
| Inhoudsmeter (brandstoftank) | ja |
| Drinkwatertank (liter) | 630 in 3 tanks |
| Inhoudsmeter (drinkwatertank) | ja |
| Vuilwatertank (liter) | 60 |
| Stuurwiel | kabelbesturing |
| Extra info romp | Seacocks and thru hulls needs to be replaced |
| Extra info | Spanish commercial flag survey 2023 |
| Extra info | Ballast lead 3.7T |
| Extra info | Berth available Port Balis, 40 km north of Barcelona |



ACCOMMODATIE

| | |
|------------------|--|
| Hutten | 2 |
| Slaapplaatsen | 6 |
| Interieur | teak Floor and ceiling needs attention |
| Vloer | hout |
| Kaartentafel | ja |
| Achterkajuit | Direct access to aft cockpit. |
| Keuken | ja |
| Spoelbak | roestvast staal 2 |
| Kooktoestel | Techimpex "Compact classic" : 2 burners + oven, 2020 |
| Oven | Gas new 2020 |
| Gasdetector | 1 + detector |
| Koelkast | 12V freezer in fridge |
| Warmwatersysteem | 220V + motor |
| Waterkoker | ja |
| Eigenaarshut | tweepersoonsbed |
| Kledingkast | lades en legplanken |
| Badkamer | gedeeld Needs renovation |
| Toilet | Manual RM69 installed 2021 |
| Douche | gedeeld |
| Gastenhut 1 | tweepersoonsbed Forward cabin with sink |
| Kledingkast | lades en legplanken |
| Badkamer | gedeeld |
| Douche | gedeeld |

MOTOR(EN)

| | |
|----------------|--------|
| Aantal motoren | 1 |
| Merk | YANMAR |
| Type | 4JHE |
| Pk | 44 |
| kW | 32.38 |



| | |
|------------------------------|--|
| Brandstof | diesel |
| Geïnstalleerd in jaar | 2000 |
| Gereviseerd in jaar | Dec. 2019 general overhaul of the engine, removed from the boat. |
| Koelsysteem motor | indirecte warmtewisselaar |
| Aandrijving | V-drive |
| Keerkoppeling | hydraulisch Need a revision |
| Uitlaatsysteem | New Vetus inlet and exhaust engine pipes (2019) |
| Type schroef | Max prop |
| Acculader | Dolphin Premium 12.40 |
| Zonnecellen | 2 solar panels 190W each , 12V, EcoGreen |
| Extra info | New bilge pumps 2019 Painted Dramboline |
| Extra info | The main engine is pending a revision |

NAVIGATIE

| | |
|-----------------------------|----------------------|
| Kompas | Danforth |
| Dieptemeter | ja |
| Marifoon | ICOM IC-M330 |
| Handmarifoon | Cobre MR-HH350 |
| Autopiloot | Raymarine ST40 |
| Radar | Furuno 1623 |
| GPS | 2 |
| Plotter/GPS | ja |
| Epirb | McMurdo E5 Smartfind |
| Navigatieverlichting | LED |

UITRUSTING

| | |
|---------------------|-------------|
| Kuipkussens | ja |
| Kuiptafel | ja |
| Anker | Bruce 15 kg |
| Ankerketting | 50 m |



| | |
|------------------------|-------------------------------------|
| Anker 2 | Bruce 30 kg |
| Ankerlier | Vetus |
| Reddingsvlot | Neptuno 9650 / 8 persons until 2024 |
| Zwemvesten | 10 inflatable |
| Verrekijker | ja |
| Radar reflektor | ja |

TUIGAGE

| | |
|--------------------------------|--|
| Tuigage | kits More than 10 years old. |
| Staan want | draad |
| Materiaal mast | aluminium Replaced in 2000 |
| Doorgestoken mast | ja |
| Grootzeil | 2012 fully battened |
| Bezaan | 2020 fully battened |
| Fok | 2018 |
| Stagzeil | 2019 |
| Reefinstallatie | smeerrepen |
| Reeflier | 2 |
| Multifunctionele lieren | val/schoot lieren 2 X Harken |
| Extra info | In 2020 new screws and bolts of all the chainplates (main mast a |



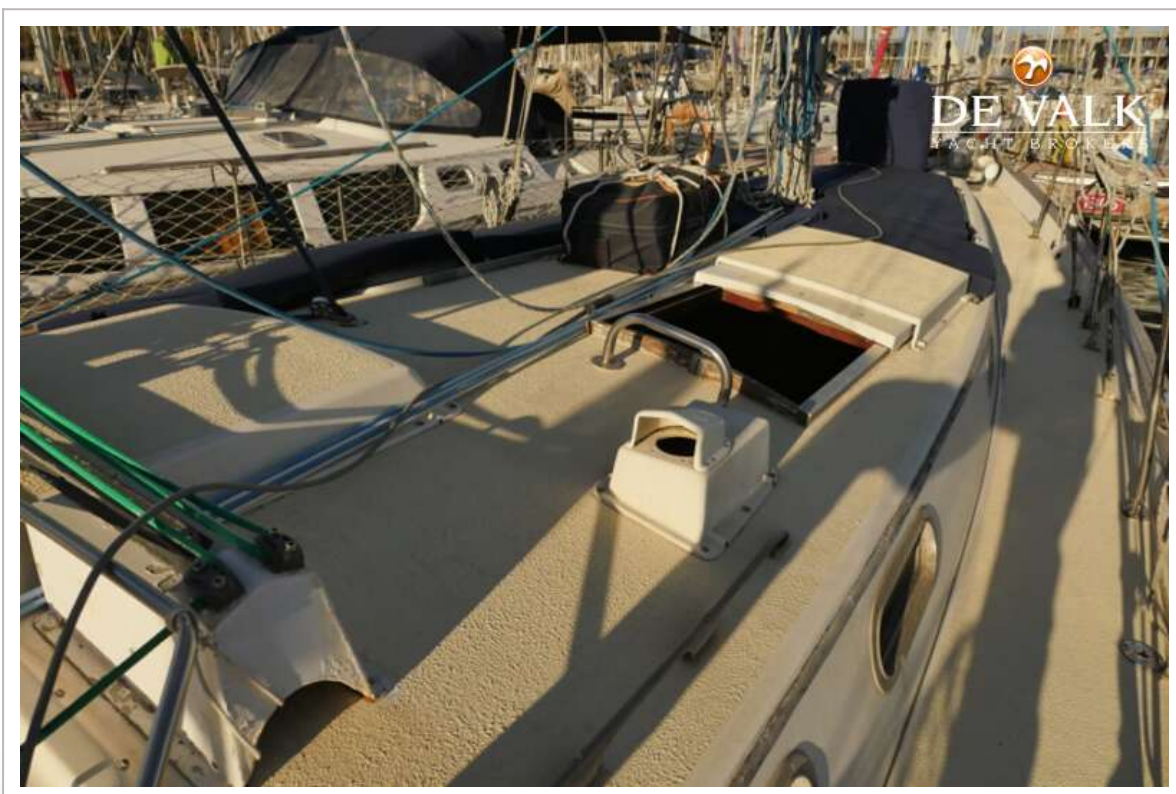
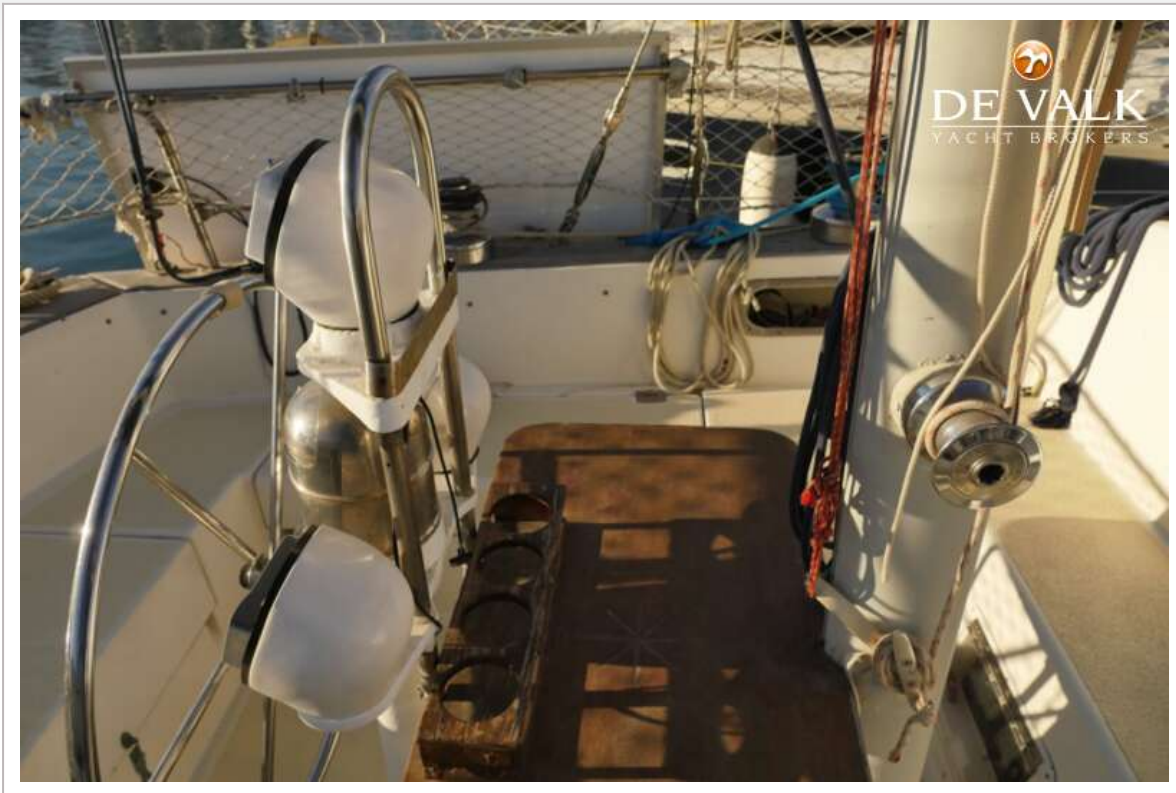
PEARSON 424







PEARSON 424







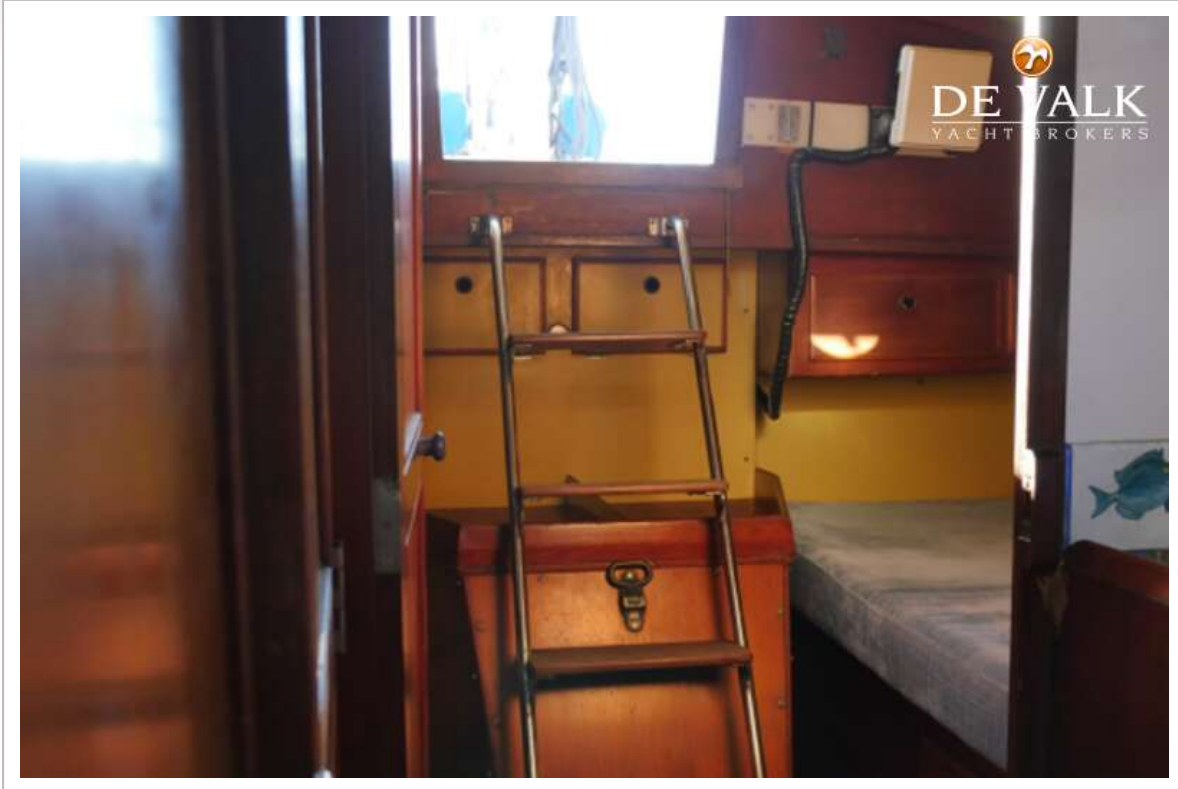
PEARSON 424



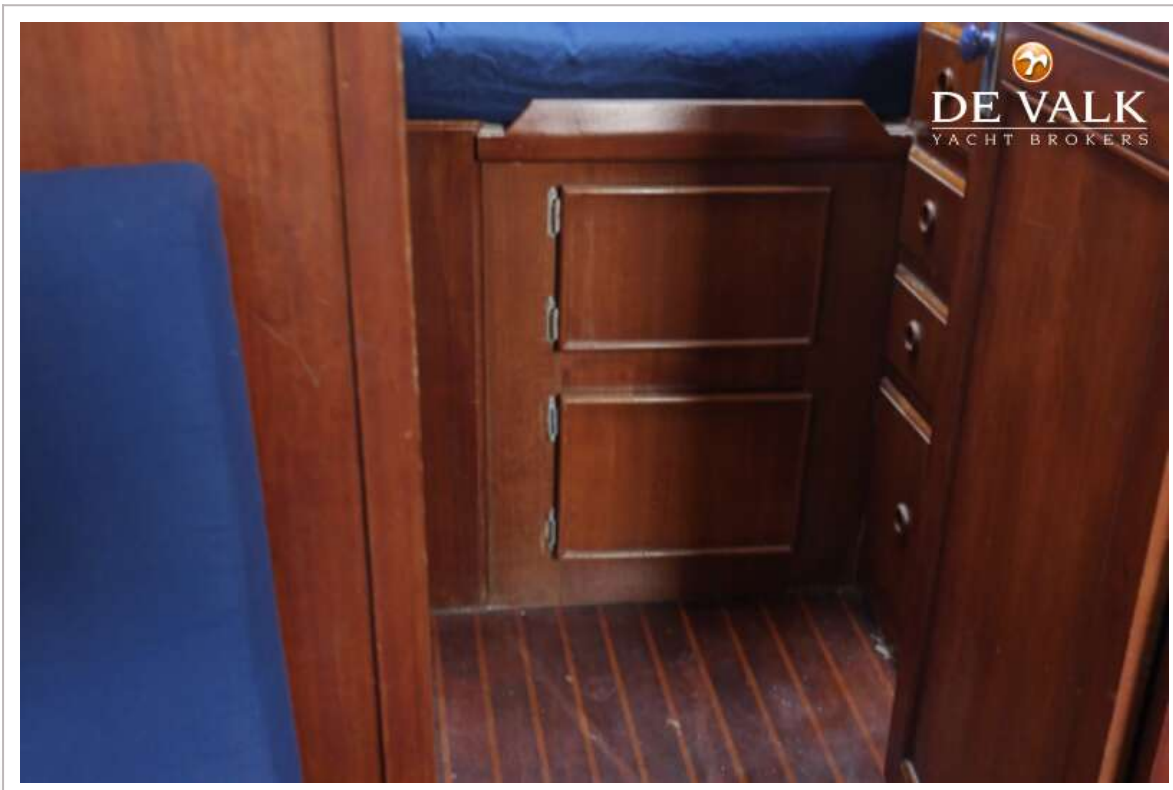
PEARSON 424



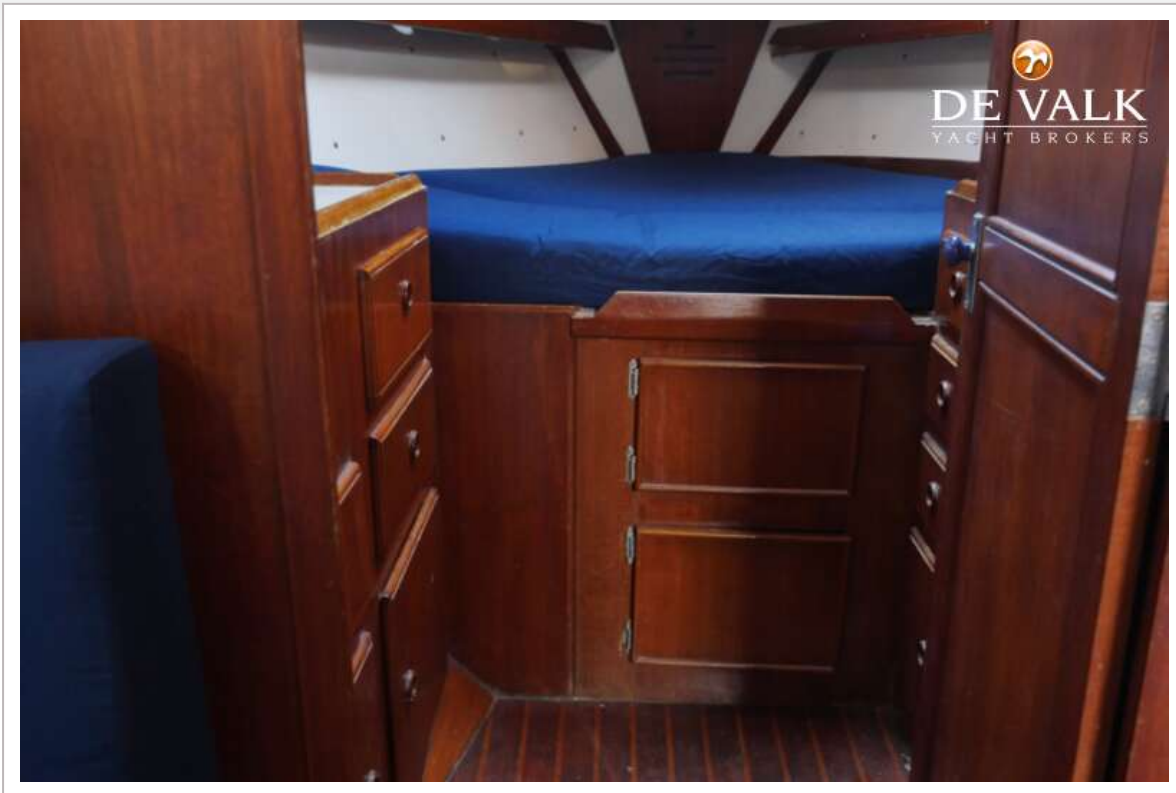
PEARSON 424



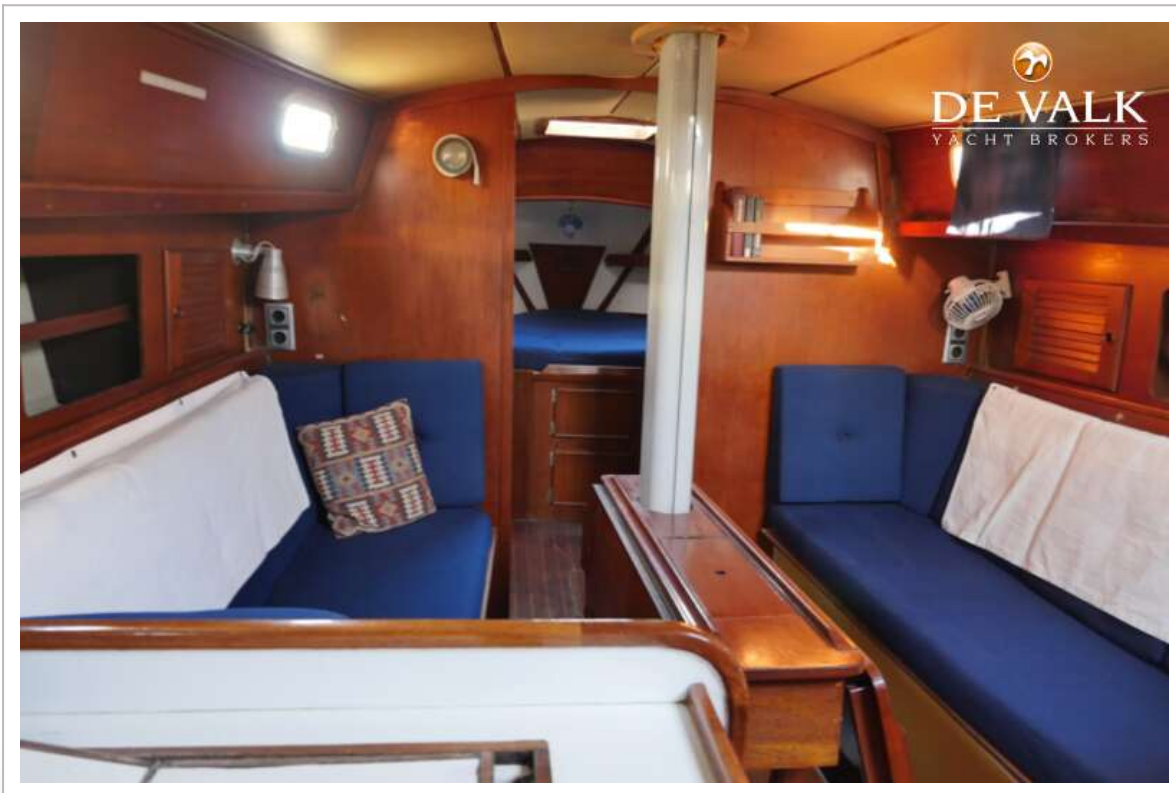
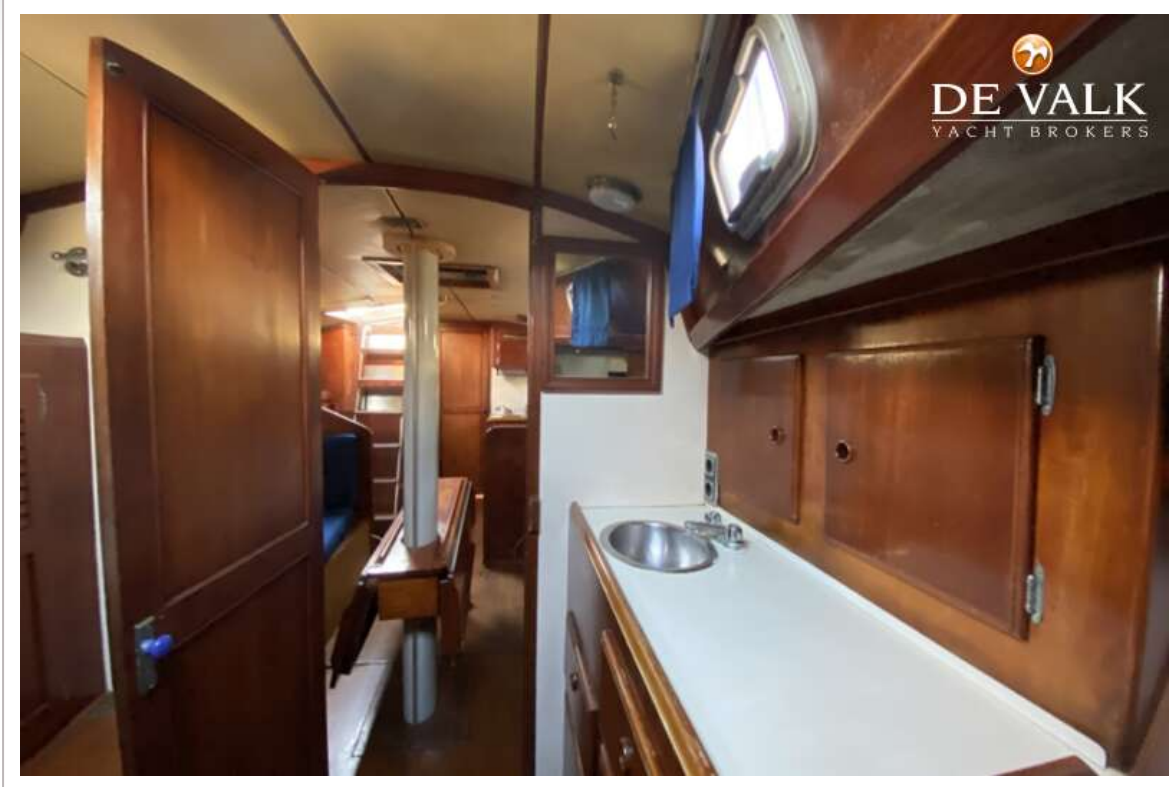
PEARSON 424



PEARSON 424



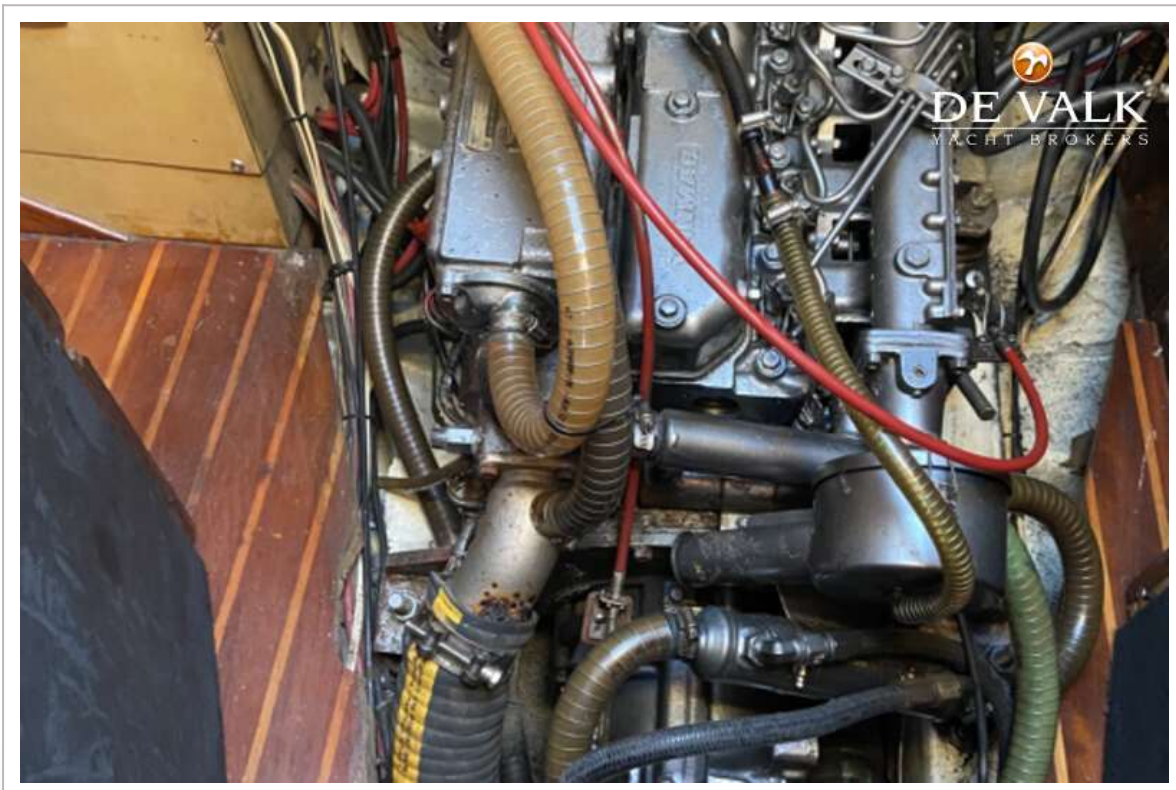
PEARSON 424



PEARSON 424



PEARSON 424



PEARSON 424

