



DE VALK
YACHT BROKERS



PILOT 44



DE VALK
YACHT BROKERS

BROKER'S COMMENTS

"Beautiful and well maintained Pilot from well known shipyard. Very well equipped and suitable for longer journeys along coastlines, rivers and canals."

SPECIFICATIES

Afmetingen	13,70 x 4,20 x 1,20 (m)	Bouwer	VDL
Bouwjaar	1996	Hutten	2
Materiaal	Staal	Slaapplaatsen	4
Motor(en)	1 x Cummins 6BT 59M Diesel	Pk/Kw	152 (pk), 111,72 (kw)
	VERKOCHT	Ligplaats	bij verkoopkantoor

CONTACT

Kantoor	De Valk Sneek	Telefoonnr.	+31 515 42 80 30
Adres	Zwolsmanweg 7	Fax	+31 (0)515 42 80 39
	8606 KC Sneek	E-mail	sneek@devalk.nl
	The Netherlands		

DISCLAIMER

Hoewel er uiterste zorg besteed is aan de correctheid, volledigheid en actualiteit van onze informatie kunnen hieraan geen rechten worden ontleend.



ALGEMEEN

Steel motoryacht PILOT 44 "Bonnefooi", built in 1996, dim.approx.: 14.00 x 4.20 x 1.20 m, air draught approx. 3.10 m (4.60 with mast up), built by De Ruiter BV - Waalwijk/NL, designed by Willem Nieland/NL, displacement approx. 20 tonnes, steel decks and superstructure, dark blue multichine hull, Thermopane windows in aluminum frames, fuel capacity approx. 1600 liters, water capacity approx. 900 liters, sump tank capacity approx. 350 liters, double hydraulic wheelsteering, mechanic engine controls, electric bowthruster.

ACCOMMODATIE

Modern beechwood interior, 2 cabins, 4 berths, saloon in wheelhouse, second saloon/dinette below deck, headroom approx. 1.95 - 2.00 m, 1x electric toilet, 1x manual toilet, shower, Galley with 4-burner ceramic stove, AEG extractor, Sharp combi microwave, Electrolux refrigerator with freezing compartment (12V/220V), Bauknecht washing/dryer machine, Sony radio/cd/cassette player, Isotherm refrigerator in wheelhouse (41 liters, 12V).

MOTOR(EN)

Single Cummins 152 hp diesel engine with approx. 1700 engine hours, speed approx. 7-8 knots, intercooling with wet exhaust, hydraulic gearbox, 12V/24V/220V electric circuit, 2x 200 Ah service batteries, 2x 200 Ah start batteries, 2x 200 Ah batteries for bowthruster, 1x battery for generator, shorepower with cable, Mastervolt 50 Amp batterycharger, Mastervolt 2500 W inverter, Onan generator, Kabola central heating, electric water pressure system with hydrofoor, hot water system through Kabola.

NAVIGATIE

Robertson echosounder with repeater, Robertson log with repeater, Shipmate RS8300 VHF with Atis, Raytheon R20XX radar (24 nm range), Robertson AP300X autopilot, Raytheon Nav. 398 GPS, Rudderindicator in- and outside, Ray-line manual searchlight, 3x wipers.

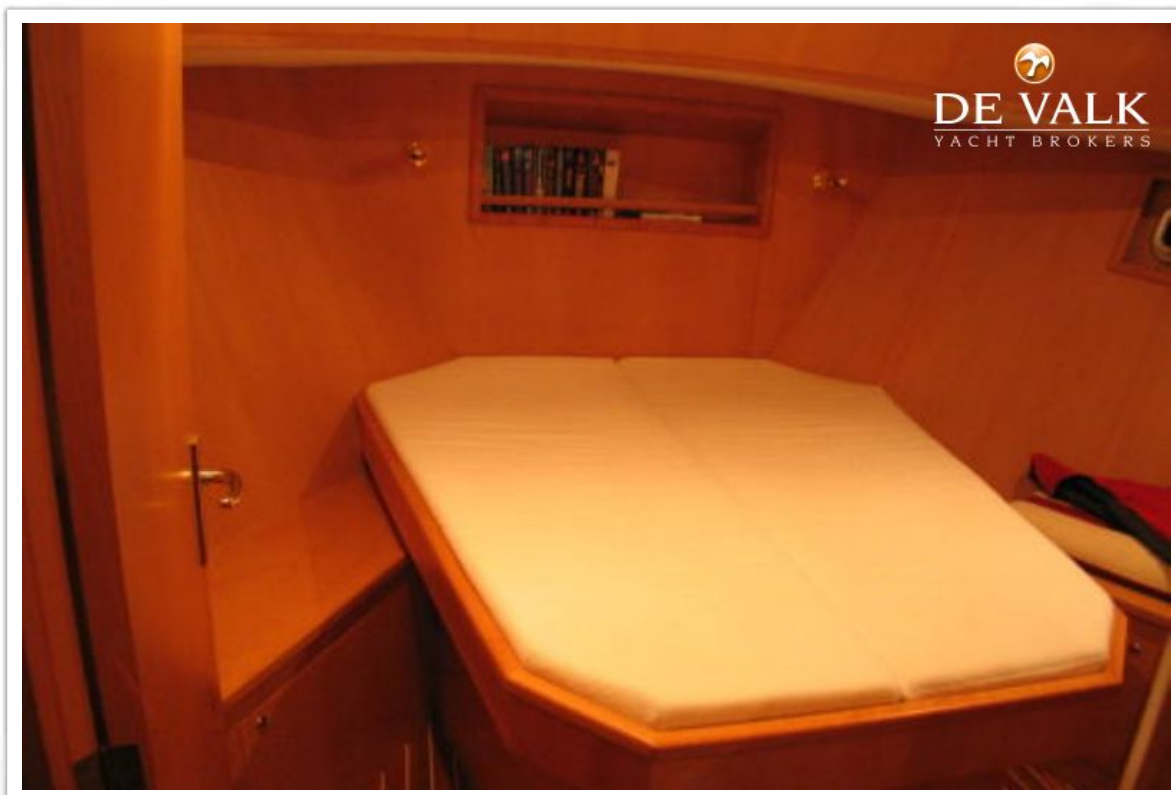
UITRUSTING

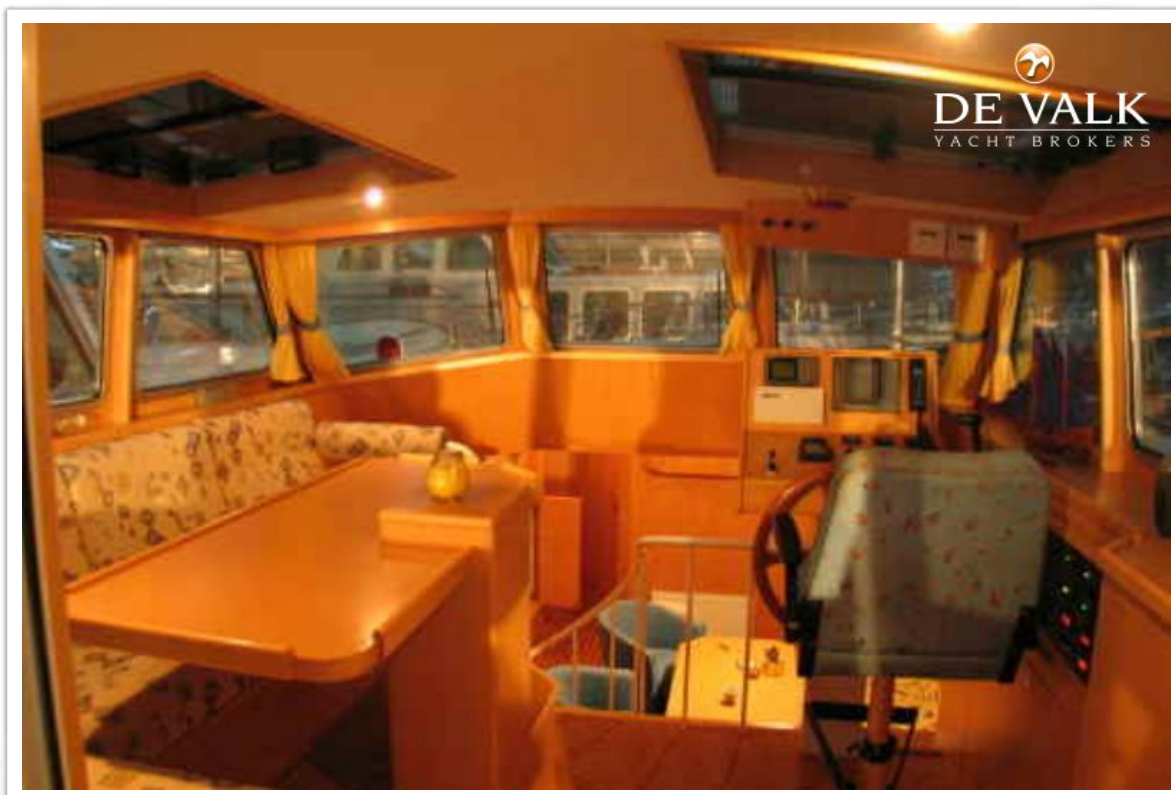
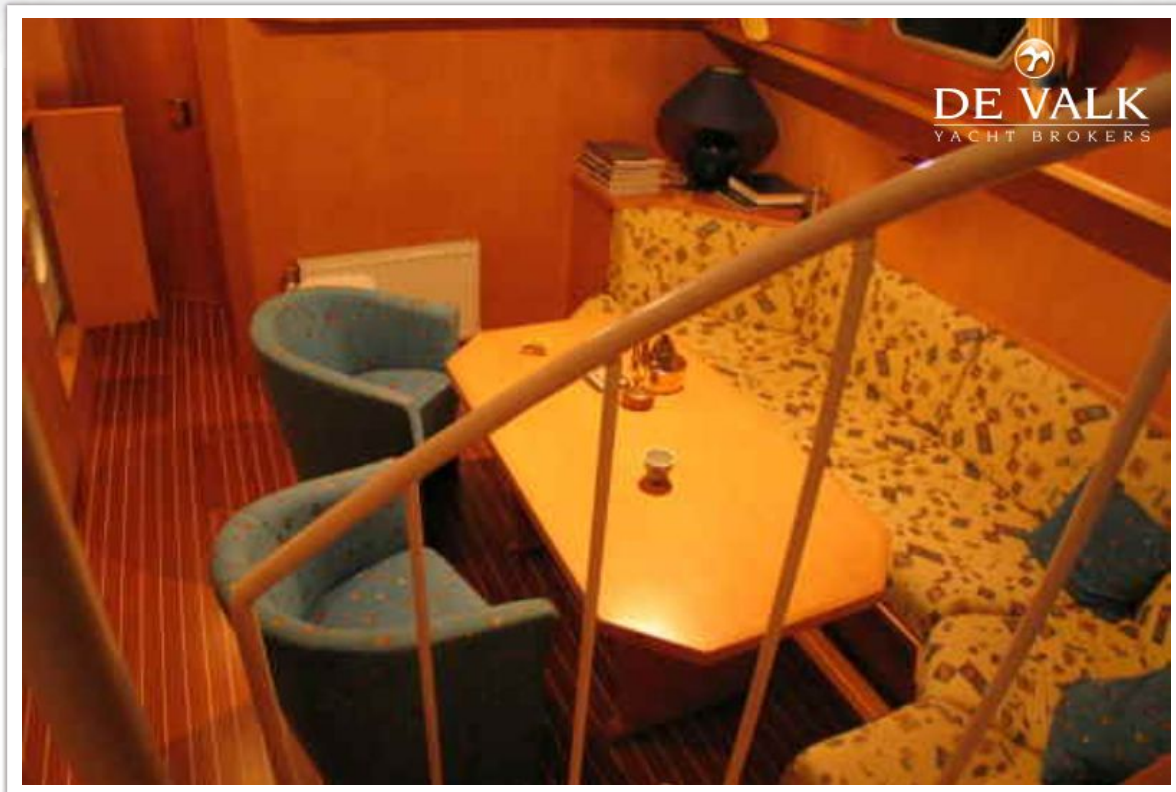
2x lifebuoy, stainless steel searailing, Lewmar electric windlass, anchor with galvanised chain, stainless steel swim ladder, deckwash installation, fenders, mooringlines.





PILOT 44





PILOT 44

