



DE VALK
YACHT BROKERS



PALMER JOHNSON 110



DE VALK
YACHT BROKERS

VAN DE MAKELAAR

Henk Jan Vissia

SPECIFICATIES

Afmetingen	33.50 x 7.16 x 2,60 / 5.55 (m)	Bouwer	Palmer Johnson Yachts LLC
Bouwjaar	1995	Hutten	3
Materiaal	Aluminium	Slaapplaatsen	6
Motor(en)	1 x Caterpillar 3408 diesel	Pk/Kw	470.00 (pk), 345.92 (kw)
Vraagprijs	€ 2.950.000 (BTW Betaald)	Ligplaats	Griekenland

CONTACT

Kantoor	De Valk Hindeloopen	Telefoon	+31 514 52 40 00
Adres	Oosterstrand 1 8713 JS Hindeloopen The Netherlands	E-mail	hindeloopen@devalk.nl

DISCLAIMER

Hoewel er uiterste zorg besteed is aan de correctheid, volledigheid en actualiteit van onze informatie kunnen hieraan geen rechten worden ontleend.



ALGEMEEN

Model	PALMER JOHNSON 110
Type	zeiljacht
Lengte (m)	33,50
Lengte waterlijn (m)	24,50
Breedte (m)	7,16
Diepgang (m)	5,55
Diepgang min (m)	2,60
Doorvaarhoogte (m)	39,00
Stahoogte (m)	2,05
Bouwjaar	1995
Gebouwd door	Palmer Johnson Yachts LLC
Land	Verenigde Staten
Ontwerper	John G. Alden
Waterverplaatsing (t)	95
Bruto tonnage	114
Netto tonnage	34
Romp materiaal	aluminium
Romp kleur	Dark Green
Rompvorm	S-spant
Kiel type	hefkiel - hydraulic by Holmatro
Materiaal opbouw	Aluminium with teak
Stootlijst	aluminium
Dek materiaal	aluminium
Afwerking dek	teak
Antifouling (jaar)	NRG Marine Sonihull system
Dorades	2
Raamlijsten	aluminium
Raammateriaal	dubbelglas
Dekluik	3 custom for deck lockers, rest Lewmar
Patrijspooten	aluminium



Brandstoftank (liter)	aluminium 11.355
Inhoudsmeter (brandstoftank)	Maretron DSM410
Drinkwatertank (liter)	7.570
Inhoudsmeter (drinkwatertank)	Maretron DSM410
Vuilwatertank (liter)	2x 3.700
Inhoudsmeter (vuilwatertank)	Maretron DSM410
Vuilwatertank afvoer	dekafzuigpunt + pomp
Stuurwiel	hydraulisch
Binnen stuurstand	In pilot house
Noodhelmstok	+ wheel steering
Extra info verfsysteem	Last painted 2020
Extra info	Last 4 years major refits, upgrades and renewals.
Extra info	List of works on request.
Extra info	Superb maintenance by very experienced owner

ACCOMMODATIE

Hutten	3
Slaapplaatsen	6
Bemanningshut	3
Bemanning slaapplaatsen	5
Interieur	teak By John Munford design
Vloer	Teak flooring with carpets
Open kuip	With U-shaped settee just aft the pilot house
Achterdek	With storage for the dinghy
Stuurhut	Aft from the main saloon with centre wheel position and settees
Salon	Above engine room with settees and dining table
Stahoogte salon (m)	Approx. 2.05 metres
Verwarming	Electric heating
Airco	airco omkeerbaar
Navigatie ruimte	In pilot house as well as in owners office
Kaartentafel	In pilot house



Schuifdeur naar kuip	ja
Keuken	In crew area outfitted to prepare meals at sea or in harbour
Aanrechtblad	corian
Spoelbak	roestvast staal
Kooktoestel	inductie Gaggenau
Oven	Miele
Afzuigkap	Miele
Magnetron	Magic Chef
Koelkast	Double
Vriezer	Double
Warmwatersysteem	220V + motor 2x 150 litre boiler
Waterdruksysteem	elektrisch 24 and 220V
Kokendwaterkraan	ja
Ijsblokjesmachine	In saloon
Vuilnispers	/maserator in sink
Eigenaarshut	tweepers. bed + enkel bed Comfortably equipped with settee
Lengte bed (m)	2.00 x 1.40 m. and 2.00 x 0.80 m.
Kledingkast	Several wardrobes with ample hanging, cabinets and drawers
Badkamer	en suite
Toilet	en suite
Toilet Systeem	vacuum
Wasbak	in de badkamer
Douche	en suite
Extra info	Bidet in en suite bathroom
Gastenhut 1	twee enkele bedden
Lengte bed (m)	2.00 x 0.75 m.
Kledingkast	With ample hanging and drawers
Badkamer	en suite
Toilet	en suite
Toilet systeem	vacuum
Wasbak	in de badkamer
Douche	en suite



Gastenhut 2	twee enkele bedden
Lengte bed (m)	2.00 x 0.75 m.
Kleerkast	With ample hanging and drawers
Badkamer	en suite
Toilet	en suite
Toilet systeem	vacuum
Wasbak	in de badkamer
Douche	en suite
Toilet	Day head on port side of guest corridor
Toilet systeem	vacuum
Wasbak	bij het toilet
Extra info	Owners office near master bedroom equipped with nav. instruments
Bemanningshut(ten)	3 crew cabins, sleeps 5, cap's has small double, rest bunk beds
Badkamer (bemanning)	Cap's en suite, rest is shared
Toilet (bemanning)	In bathroom
Toilet systeem	vacuum
Wasbak	in de badkamer
Douche (bemanning)	In the bathroom
Extra info	Cosy messroom equipped with back-up navigation systems
Wasmachine	Miele Softtronic W5825
Droger	Miele professional PT7135 C Vario
Centraal stofzuig systeem	ja
Extra info	Wine lockers in saloon integrated in the interior

MOTOR(EN)

Aantal motoren	1
Merk	Caterpillar
Type	3408
Pk	470
kW	345.92



Brandstof	diesel
Geïnstalleerd in jaar	1995
Maximale snelheid (kn)	11
Kruissnelheid (kn)	9
Verbruik (ltr/uur)	28
Bereik (nm)	3000
Motoruren	9153
Koelsysteem motor	indirecte warmtewisselaar
Aandrijving	schroefas
Motorbediening	elektrisch Dockmate remote system with bow and stern thruster operation
Keerkoppeling	hydraulisch Reintjes type WAF 242
Boegschroef	hydraulisch 2x Hydropower driven of either of PTO NL generators
Hekschroef	hydraulisch 1x Hydropower driven of either of PTO NL generators
Uitlaatsysteem	watergekoeld
Type schroef	vaanstand Hundested variable pitch with Spurs line cutter on shaft
Schroefbladen	4
Materiaal schroefas	roestvast staal
Smering schroefas	vet
Elektrische lenspomp	Flomax 4.5hp AC pump, 3x PAR AC pumps
Bilge alarm	High water bilge alarms 5x
Elektrische installatie	AC 230V, single phase 60Hz, DC 12/24 V users (AC 110V)
Generator	2x Northern Light 55 kVa, SB side overhaul 2015, service '23
Draaiuren generator	11-04-2024: PS 3.579hrs; SB 21.948hrs
Generator 2	Fisher Panda; 15000i 15kVa, installed 2023
Draaiuren generator 2	11-04-2023: 221hrs
Accu's	2023: 12x 220Ah; 12V
Startaccu	2023: 2x 220Ah; 12V
Navigatie accu	2023: 2x 220Ah; 12V
Generatoraccu	2023: 2x 220Ah; 12V



Accu monitor	Several
Acculader	Several Mastervolt and Victron
Omvormer	2x ASEA 12 Kva shore power converters
Walstroom	100 amp inlet aft; Hubble cords and plugs
Scheidingstrafo	ja
Watermaker	2x Sea Recovery 1200 US gallons per day (reverse osmosis treat.)
Extra info	Holmatro centreboard lift with electric/hydraulic drive
Extra info	Lewmar Commander hydraulic packs (2) for rig and winch systems
Extra info	HPS hydraulic PTO each generator for windlass and thrusters

NAVIGATIE

Kompas	Danforth liquid Compass
Electrisch kompas	Furuno Satellite GPS gyrocompass
Multi control display	Maretron DSM 410 level indicators
Dieptemeter	Furuno F1-150
Windmeetset	B&G Hercules 2000 MFD wind/speed/direction
Repeaters	Several in office, cockpit, cap's cabin and mess
Marifoon	1x Icom ICM330, 2x Icom 502
Handmarifoon	2x
Autopiloot	Furuno Nav-Pilot (revised 2017) + Simrad back-up
Roerstand aanwijzer	ja
Radar	Furuno 96 mile with AIS
GPS	Furuno Nav net GPS, 3D GPS (cap's cabin)
Plotter	Via computer systems
Weer ontvanger	ja
PC computer	4x 15" Nauticomp (Pilothouse); 1x 15" in office, 1x flat. mess
Epirb	2x 406 Epirb
"MOB" zender	ja
Camera	2x Raymarine FLIR
Navigatieverlichting	ja



Zoeklicht	ja
Praai installatie	ja
Extra info	KVH V7 Tracphone SATCOM; FB 250 receiver Panasonic PABX phone
Extra info	Furuno FS 5000 SSB; C-7280 telefax; Iridium+Starlink+Fleet one

UITRUSTING

Storm ramen	ja
Zonnetent	ja
Raamkleden	ja
Kuipkussens	2015
Kuiptafel	Teak offering lots of space
Kuipstoelen	2
Zwemtrap	Manually operated, stainless steel with teak
Loopplank	Hydraulic custom made
Anker	CQR Lough Stainless steel
Ankerketting	Galvanized
Anker 2	Rocna Stainless steel
Ankerketting	Galvanized
Kaapstander	2x Lewmar 6000
Bijboot	Williams Sportjet 460; year 2021
Dekkraan	Via Mizzen boom
Zeereeling	draad
Handgreep (opbouw)	teak
Hekstoel	Stainless Steel
Preekstoel	Stainless Steel
Reddingsvlot (pers)	2x 6 persons
Reddingsvlot laatst gekeurd	01-2024
Zwemvesten	ja
Trossensnijder	ja
Ruitenwisser	4x



Raamventilator	ja
Hoorn	ja
Stootkussens	ja
Landvasten	ja
Reserve onderdelen	ja
Gereedschap	ja
TV	2023
TV-ontvanger	ja
Satelliet	ja
Radio	ja
DVD speler	ja
Klok - barometer	ja
Brandblusser	ja
Brandblusser in motorkamer	ja
Automatisch brandblussysteem	ja
Extra info	Bauer dive compressor with two diving cilinders

TUIGAGE

Tuigage	kits-kotter
Staand want	Rod By BSI
Merk mast	Offshore Spars
Materiaal mast	aluminium gespoten
Zalingen	Mast 3x, mizzen mast 2x
Doorgestoken mast	ja
Grootzeil	North Sails, 2020, 180m2 plus spare 2023
Rolgrootzeil	ja
Kotterstag	ja
Bezaan	North Sails, 2020, 70m2
Bezaansstagzeil (aap)	Gennaker Doyle, 2008, 162m2
Genua rolreefsysteem	Reckmann, serviced 2020
Kotter rolreefsysteem	Reckmann, serviced 2020



Code Zero	Dustom Sails Croatia, 2022, 372m2 with heavy-duty Karver furler
Gennaker	Doyle, 2008, 469m2
Stagzeil	North Sails, 2020, 77m2
Grote kluiver	North Sails 2020, 182m2
Stormfok	Doyle
Reefinstallatie	rolgrootzeil in de mast Hood, serviced 2020
Achterstagspanner	hydraulisch
Giekneerhouder	hydraulisch Holmatro
Primaire schootlieren	2x Lewmar 111, hydraulic, 3 speed
Secondaire schootlieren	2x Lewmar 77, hydraulic, 3 speed
Genua schootlieren	2x Lewmar 62 for Mizzen outhaul and sheet
Vallieren	4x 77 Lewmar, hydraulic, 2 speed
Multifunctionele lieren	2x 62 Lewmar for Mizzen and staysail halyard, 1x 62 Pole lift
Lierhoezen	ja
Gennakerboom	carbon
Extra info	Carbon fibre booms for main mast and mizzen by Offshore Spars
Extra info	Mast and rigging pulled 2020. All North Sails are 3Di type



PALMER JOHNSON 110



PALMER JOHNSON 110

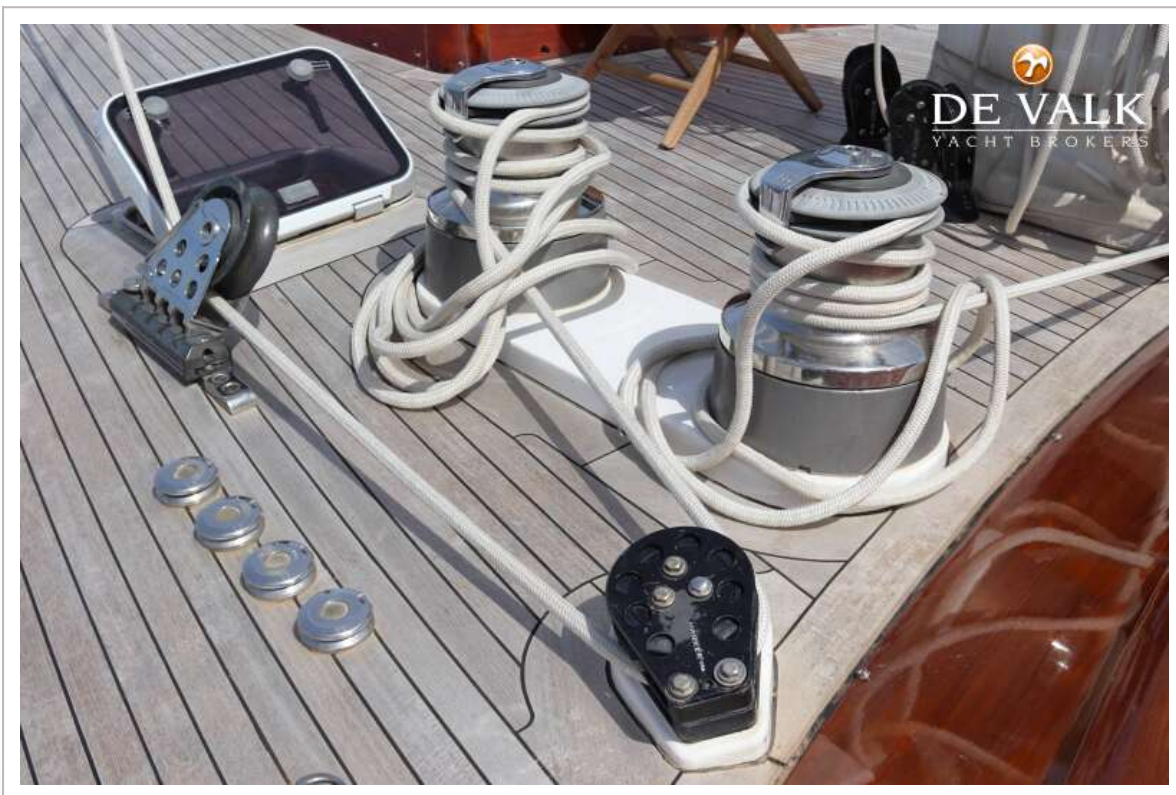


PALMER JOHNSON 110

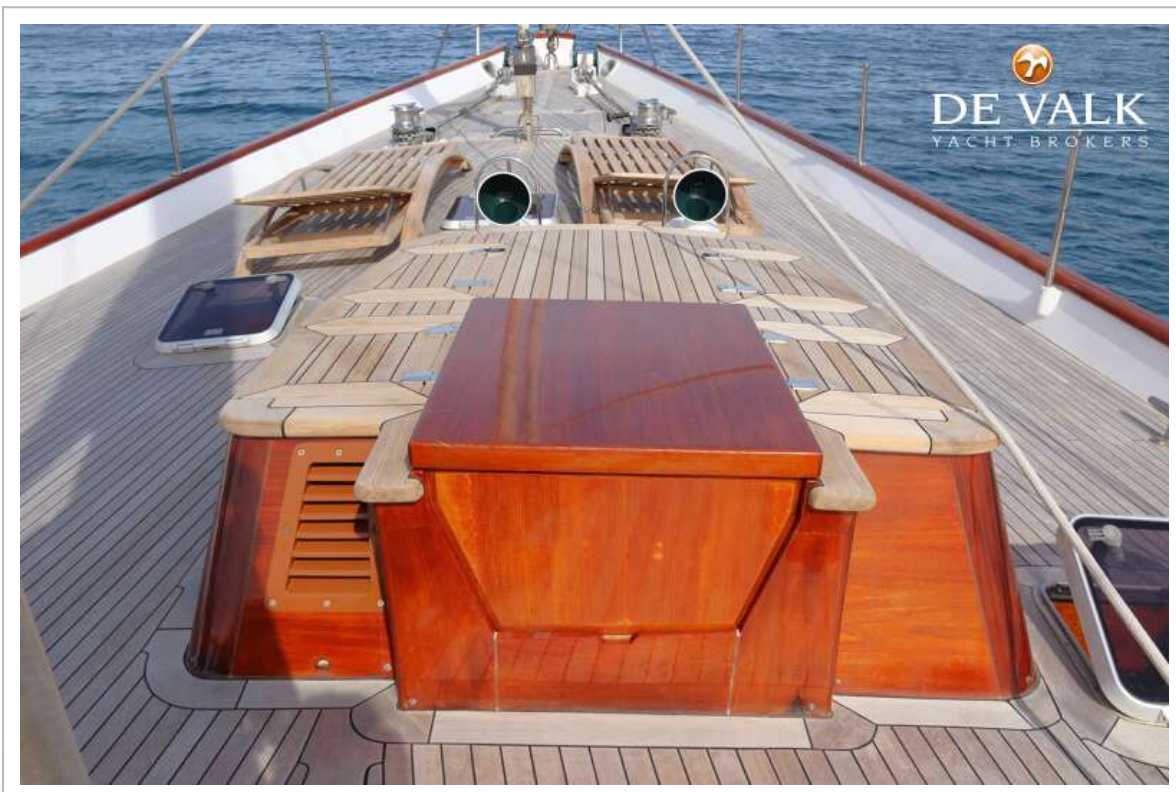




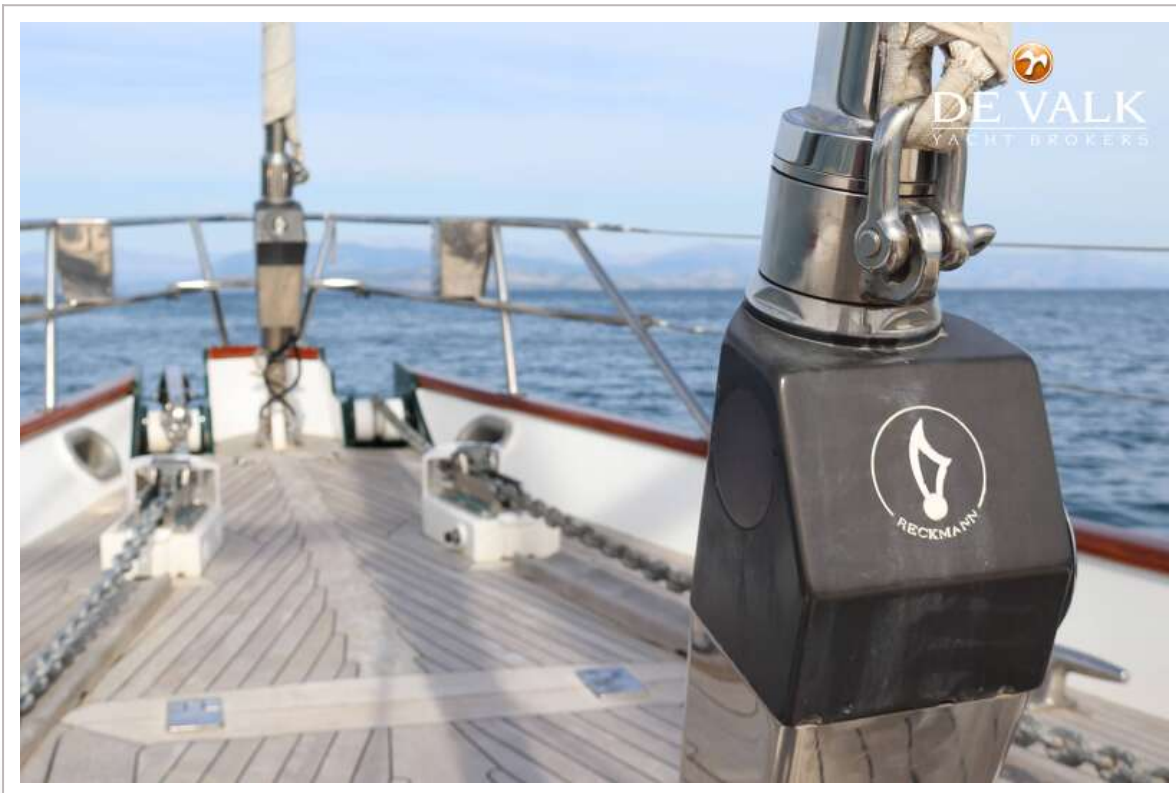
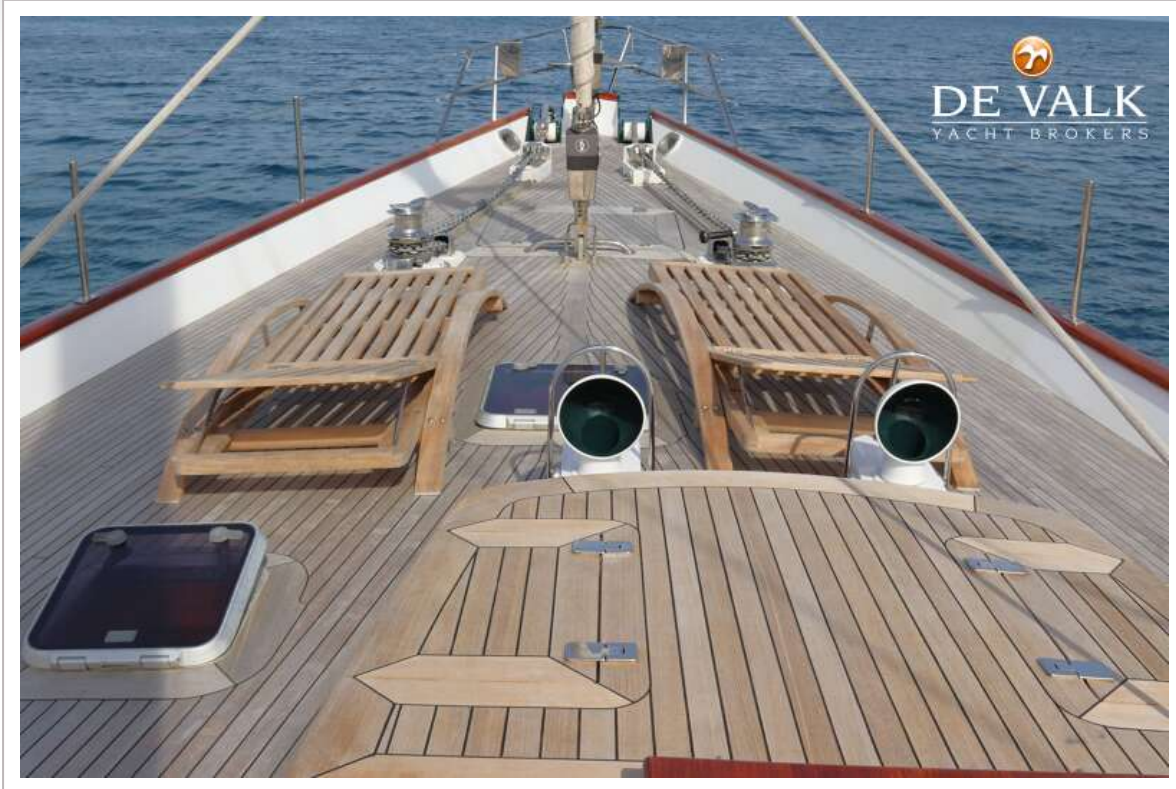
PALMER JOHNSON 110



PALMER JOHNSON 110



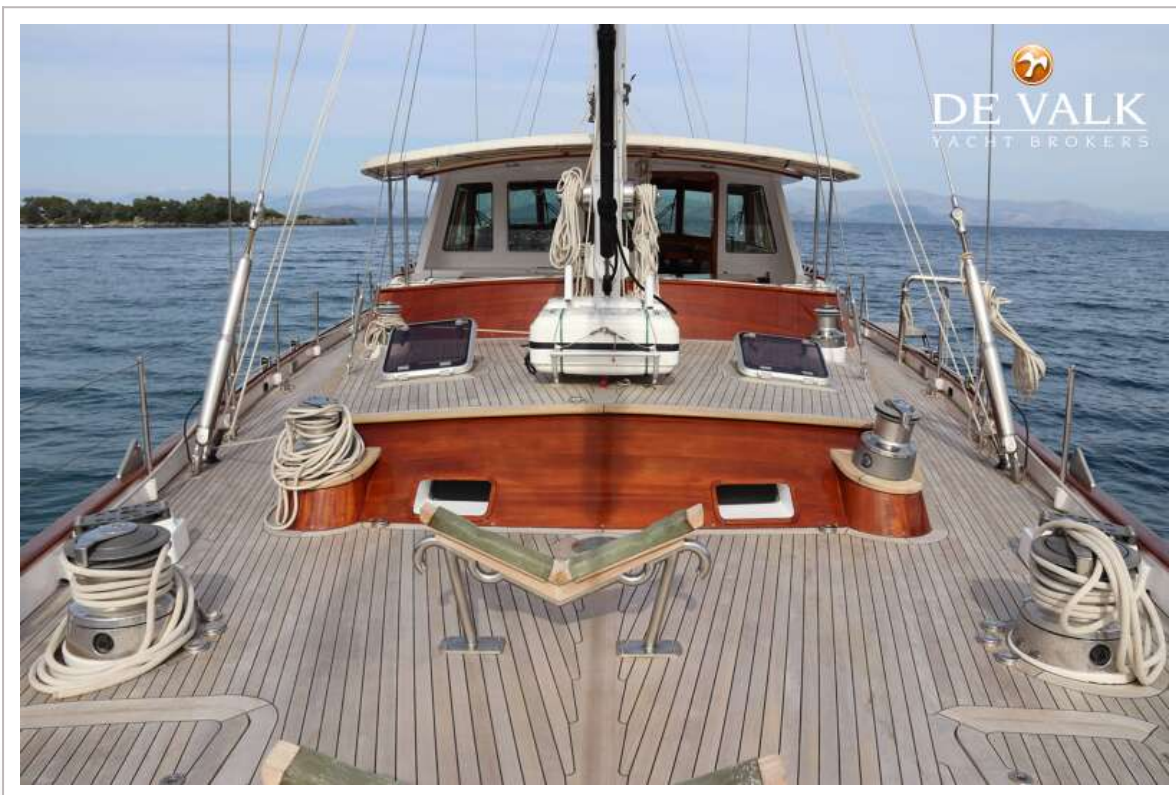
PALMER JOHNSON 110



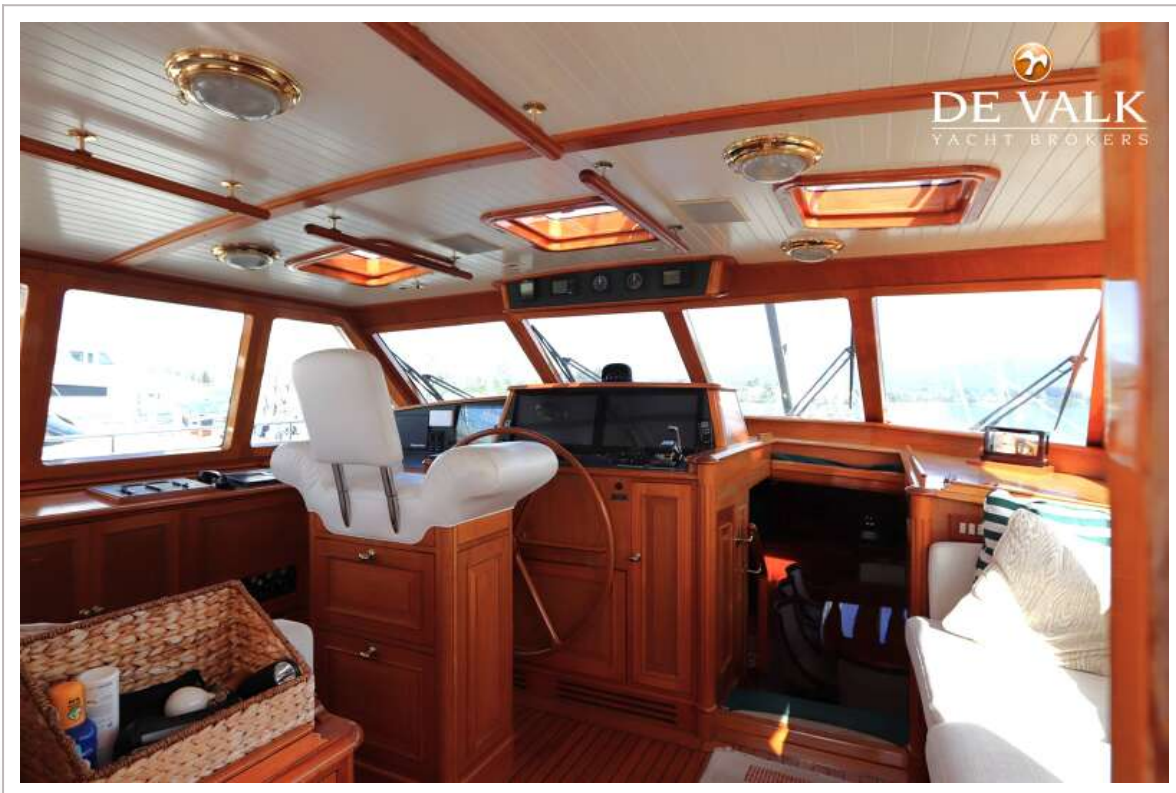
PALMER JOHNSON 110



PALMER JOHNSON 110



PALMER JOHNSON 110

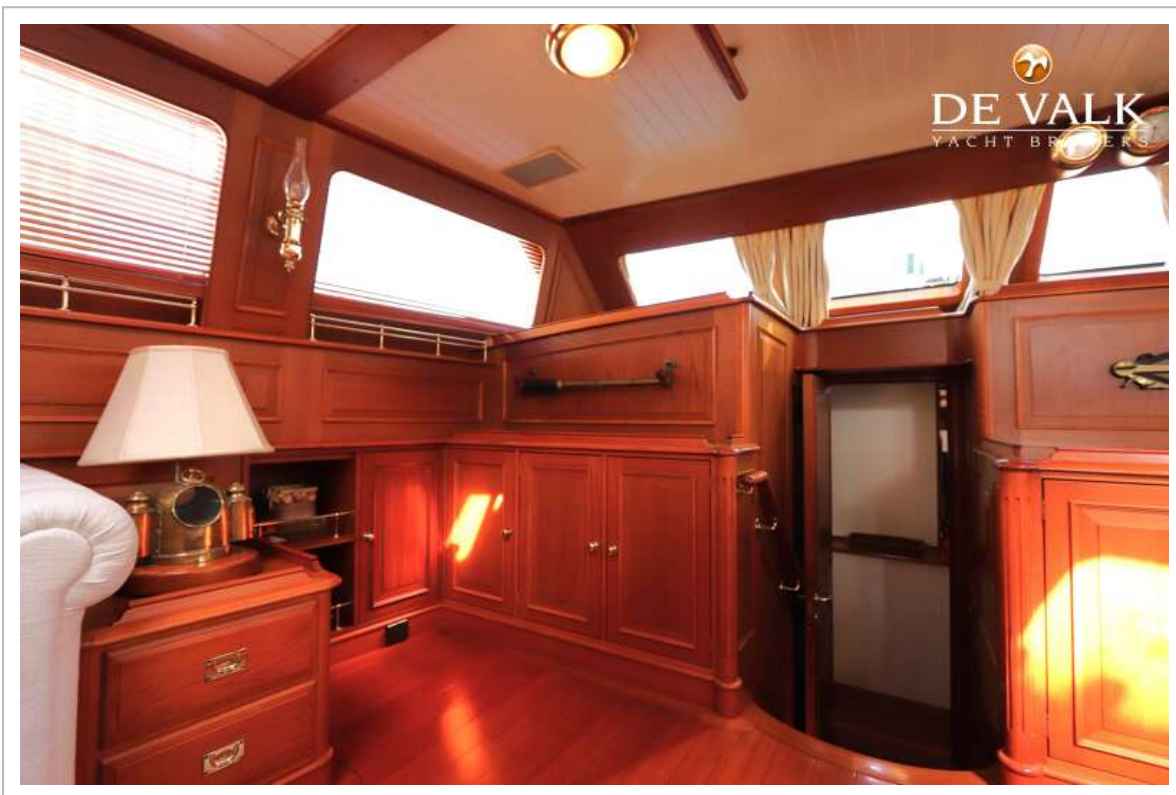
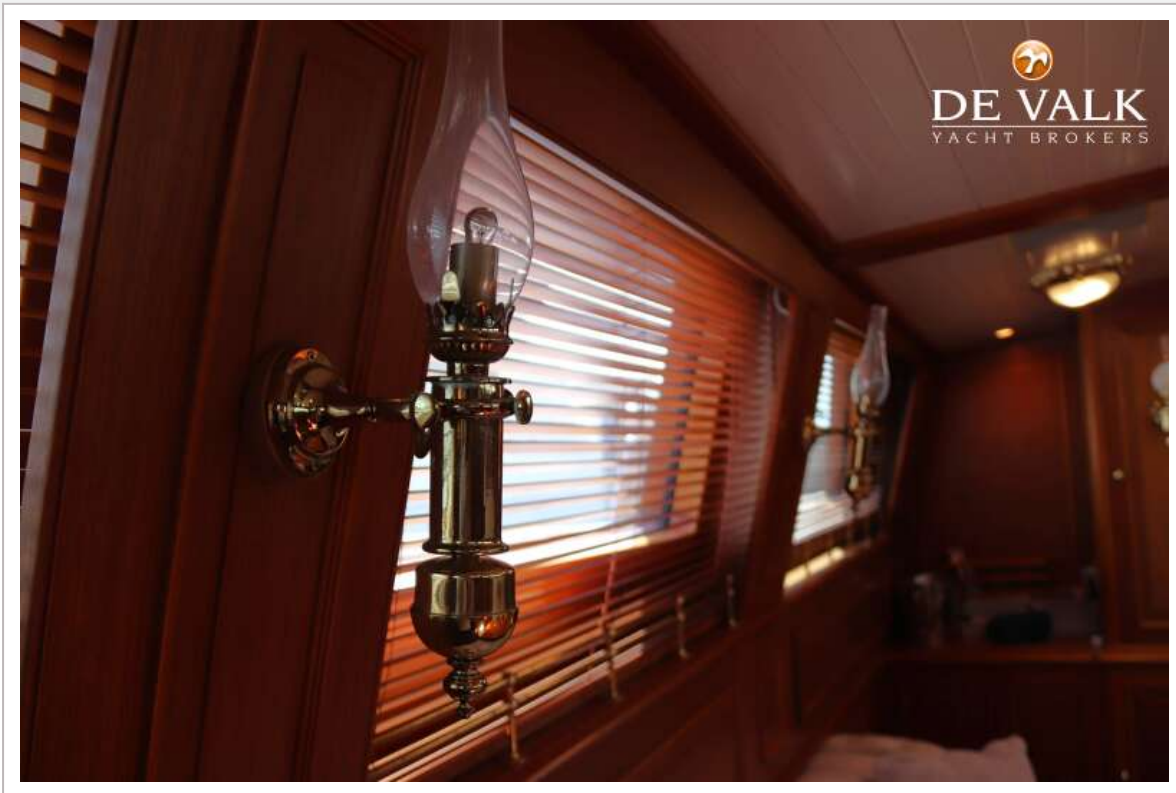


PALMER JOHNSON 110



PALMER JOHNSON 110

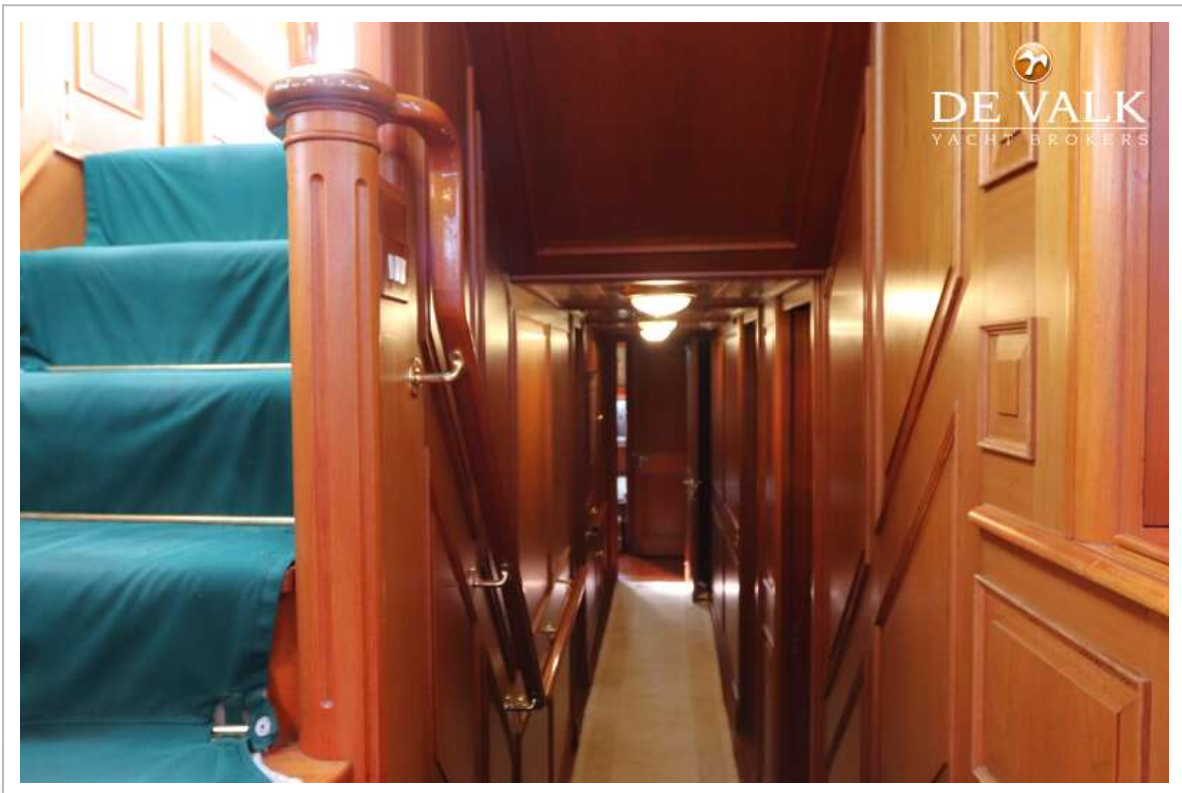




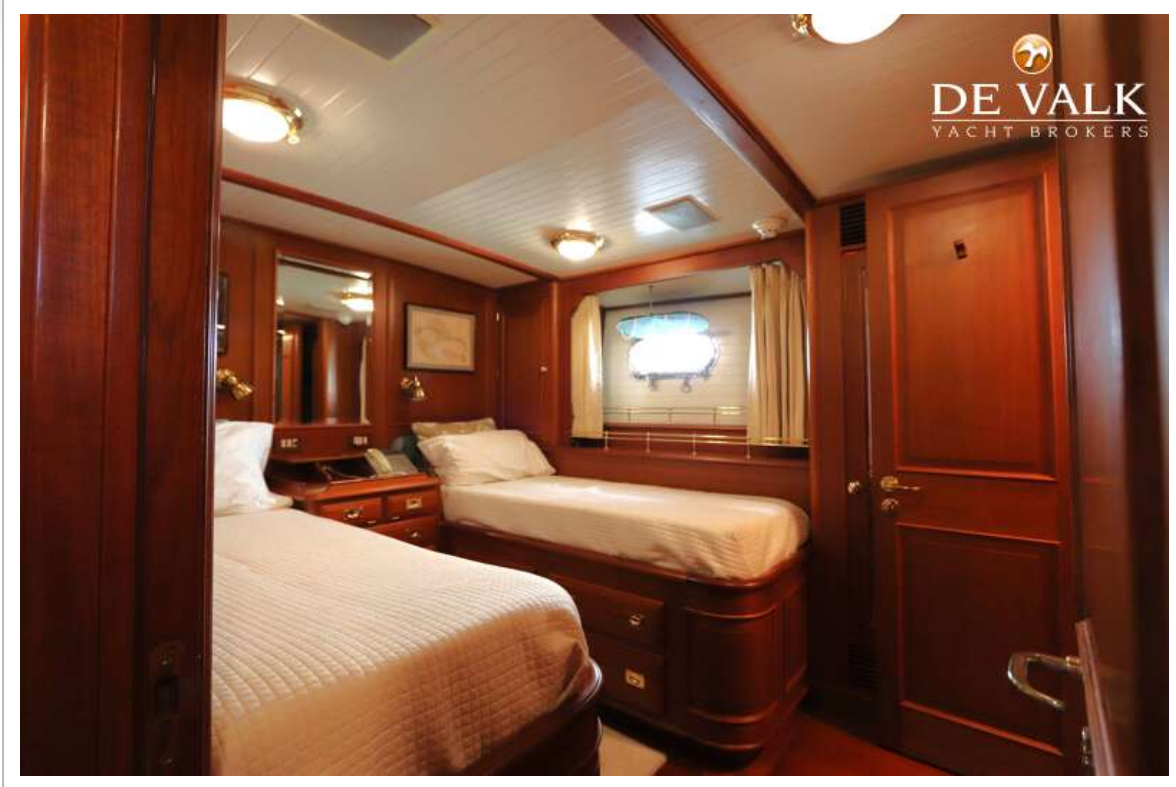
PALMER JOHNSON 110



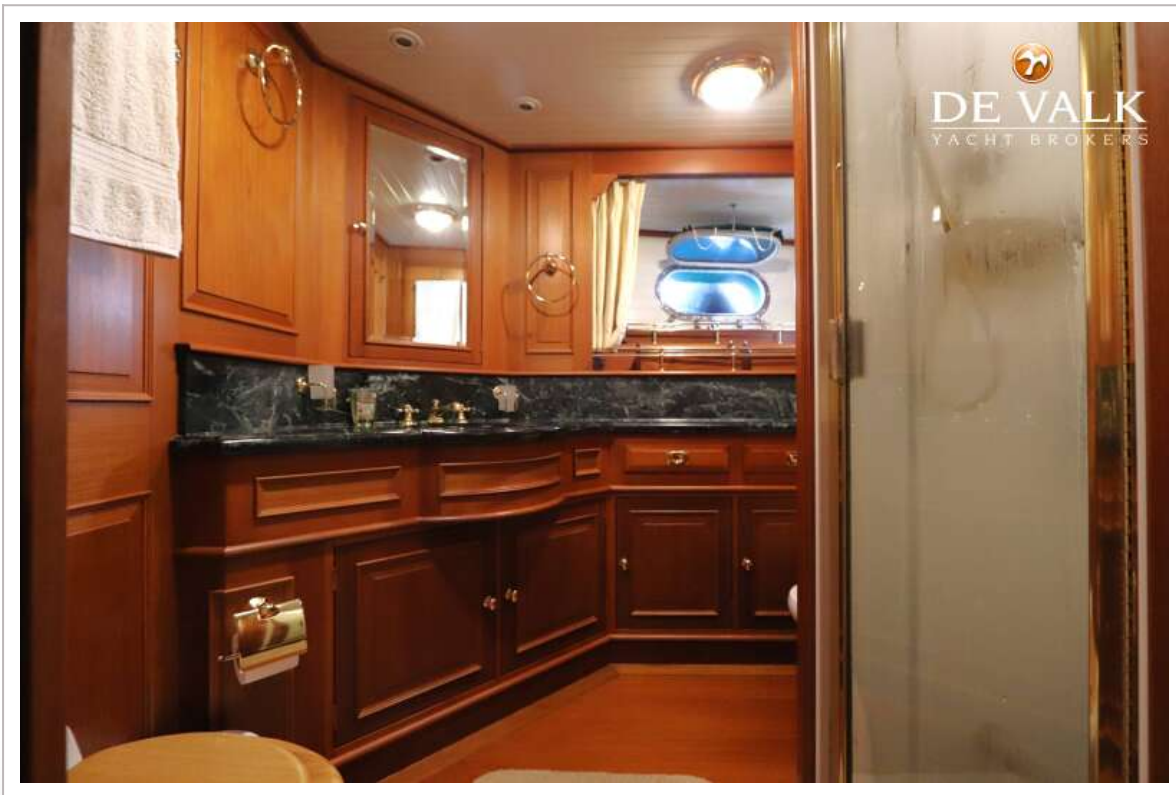
PALMER JOHNSON 110



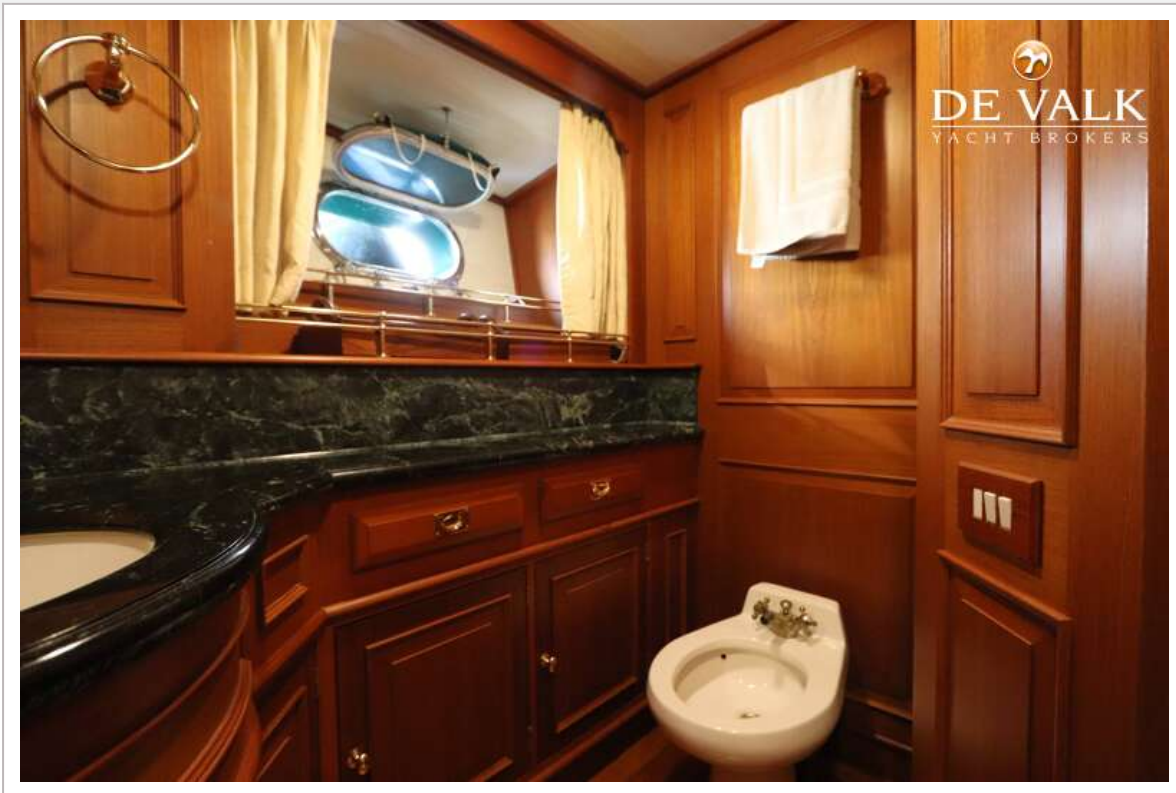
PALMER JOHNSON 110



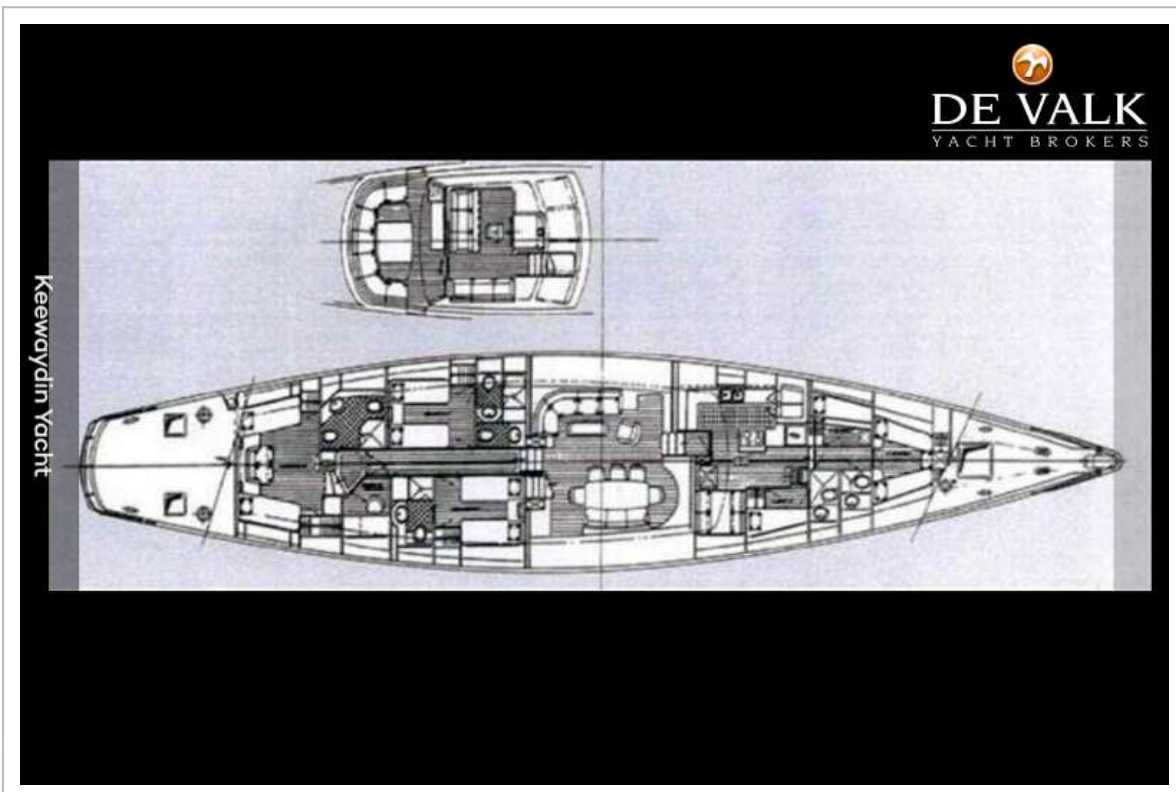
PALMER JOHNSON 110



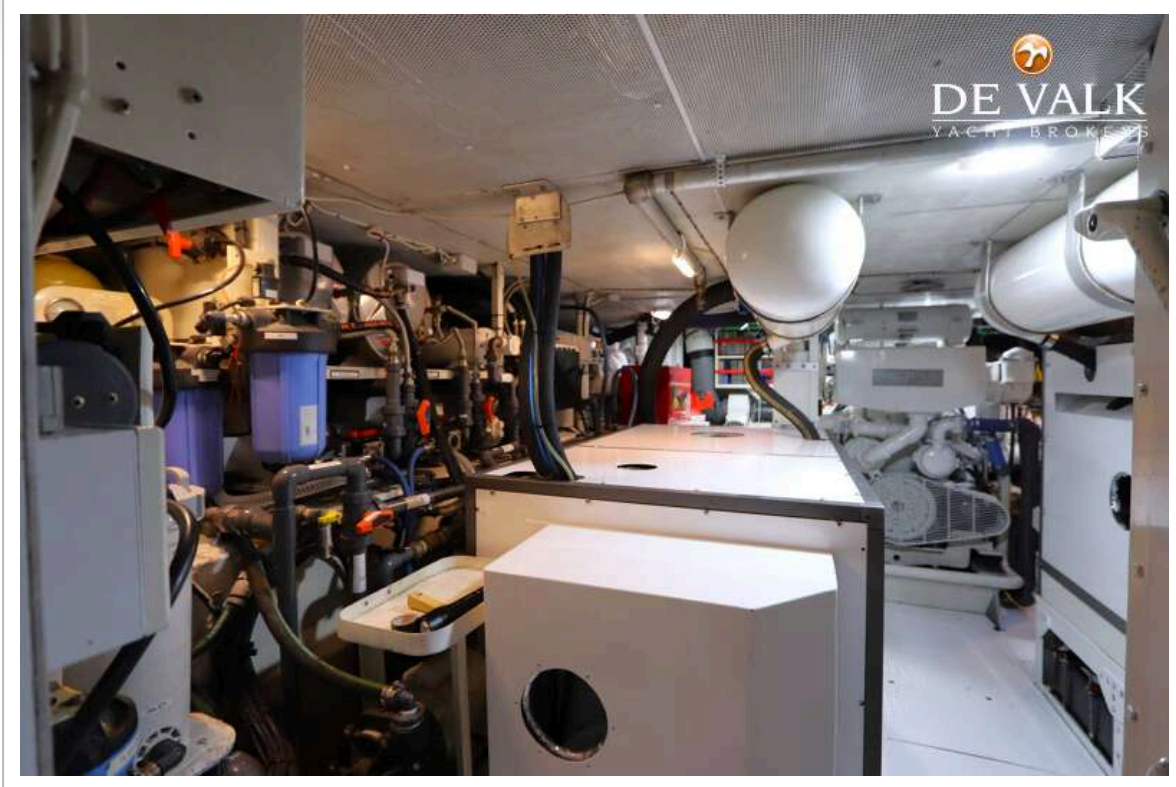
PALMER JOHNSON 110



PALMER JOHNSON 110



PALMER JOHNSON 110



PALMER JOHNSON 110



