



DE VALK  
YACHT BROKERS



## CAR/PASSENGERS FERRY 33



DE VALK  
YACHT BROKERS

# CAR/PASSENGERS FERRY 33

## VAN DE MAKELAAR

Italian shipyard's construction car/passengers ferry 33 m with a capacity of 225 pax & 8 Cars. Steel hull rebuilt in 2019. Engines had a W8 level service in 2023. Ship with all licenses valid & ready to sail away for commercial passengers & car transfer. Ship active, serviced and ready for the next summer's tourist season. Ferry that is offered in unbelievably low price.

*Sofia Iliia-Salvanou*

## SPECIFICATIES

<b>Afmetingen</b>	33.35 x 6.80 x 3.60 (m)	<b>Bouwer</b>	INSTITUTO TECNICO -NAUTICO LA SPECIA
<b>Bouwjaar</b>	1980	<b>Hutten</b>	
<b>Materiaal</b>	Staal	<b>Slaapplaatsen</b>	
<b>Motor(en)</b>	2 x FIAT AIFO 8280 SRM diesel	<b>Pk/Kw</b>	2 x 759.00 (pk), 558.62 (kw)
<b>Vraagprijs</b>	€ 450.000 (BTW Vrijgesteld)	<b>Ligplaats</b>	elders / niet bij verkoopkantoor

## CONTACT

<b>Kantoor</b>	De Valk Corfu	<b>Telefoon</b>	(+30) 6948681503
<b>Adres</b>	New Port of Corfu, near Gouvia Marina 490 83 Corfu GR	<b>E-mail</b>	corfu@devalk.nl

## DISCLAIMER

Hoewel er uiterste zorg besteed is aan de correctheid, volledigheid en actualiteit van onze informatie kunnen hieraan geen rechten worden ontleend.



# CAR/PASSENGERS FERRY 33

## ALGEMEEN

<b>Model</b>	CAR/PASSENGERS FERRY 33
<b>Type</b>	motorjacht
<b>Lengte (m)</b>	33,35
<b>Breedte (m)</b>	6,80
<b>Diepgang (m)</b>	3,60
<b>Bouwjaar</b>	1980
<b>Gebouwd door</b>	INSTITUTO TECNICO -NAUTICO LA SPECIA
<b>Land</b>	Italië
<b>Bruto tonnage</b>	202
<b>Netto tonnage</b>	73
<b>Romp materiaal</b>	staal
<b>Romp kleur</b>	wit
<b>Dek materiaal</b>	staal
<b>Afwerking dek</b>	anti-slip verf
<b>Antifouling (jaar)</b>	April 2023 (Hempel)
<b>Raammateriaal</b>	normaal glas
<b>Patrijspooten</b>	ja
<b>Brandstoftank (liter)</b>	6000 (it was cleaned in 2023)
<b>Inhoudsmeter (brandstoftank)</b>	ja
<b>Drinkwatertank (liter)</b>	4000
<b>Inhoudsmeter (drinkwatertank)</b>	ja
<b>Vuilwatertank (liter)</b>	3000
<b>Stuurwiel</b>	ja
<b>Binnen stuurstand</b>	ja

## ACCOMMODATIE

<b>Bemanningshut</b>	3 double
<b>Bemanning slaappleatsen</b>	6
<b>Salon</b>	ja
<b>Airco</b>	ja



# CAR/PASSENGERS FERRY 33

Keuken	ja
Aanrechtblad	ja
Spoelbak	ja
Koelkast	ja
Vriezer	ja
Warmwatersysteem	ja
Waterdruksysteem	ja
Koffiezetapparaat	ja

## MOTOR(EN)

Aantal motoren	2
Merk	FIAT AIFO
Type	8280 SRM
Pk	759
kW	558.62
Brandstof	diesel
Gereviseerd in jaar	2023 SERVICE LEVEL W8
Maximale snelheid (kn)	11
Kruissnelheid (kn)	10
Verbruik (ltr/uur)	80
Motoruren	1.800
Aandrijving	schroefas
Schroefas afdichting	ja
Boegschroef	Only propeller installed, no engine
Stuwdruklager	ja
Type schroef	vast
Schroefbladen	ja
Materiaal schroefas	roestvast staal
Smering schroefas	water
Elektrische lenspomp	ja
Elektrische installatie	At W8 service, electric cables related to engine were replaced



# CAR/PASSENGERS FERRY 33

Generator	PERKINS 50 Kw
Generator 2	BAUDOUIIN 47 Kw
Accu's	ja
Startaccu	ja
Lichtaccu	ja
Generatoraccu	ja
Accu monitor	ja
Acculader	ja
Walstroom	ja
Stabilisatoren	ja

## NAVIGATIE

Kompas	ja
Dieptemeter	ja
Marifoon	ICOM IC-MI56 class D SN: 01612
Handmarifoon	GMDSS MC MURDO R5 & AIRBAND VHF ICOM IC-A6E
GPS	RECEIVER FURUNO GP-80
Radar/GPS	X BAND JRC 1800(JMA -V1100) 2Kw
Navtex	RECEIVER SHIPMATER RS6100
AIS transponder	RAYTHEON RM808AIS
Radio ontvanger	VHF/DSC TRANSEIVER FURUNO FM-8500
Epirb	AUTO KANNAD MARINE SAFELINK SPORT PRO V2
Navigatieverlichting	ja
Extra info	EPIRB MANUAL KANNAD MARINE SAFELINK SPORT PRO V2
Extra info	SART MC MURDOS4 RESCUE. EMA D.O.O. BLUE TRACKER SSAS

## UITRUSTING

Anker	200 Kg OMEGA
Ankerketting	150 m New
Anker 2	200 Kg



# CAR/PASSENGERS FERRY 33

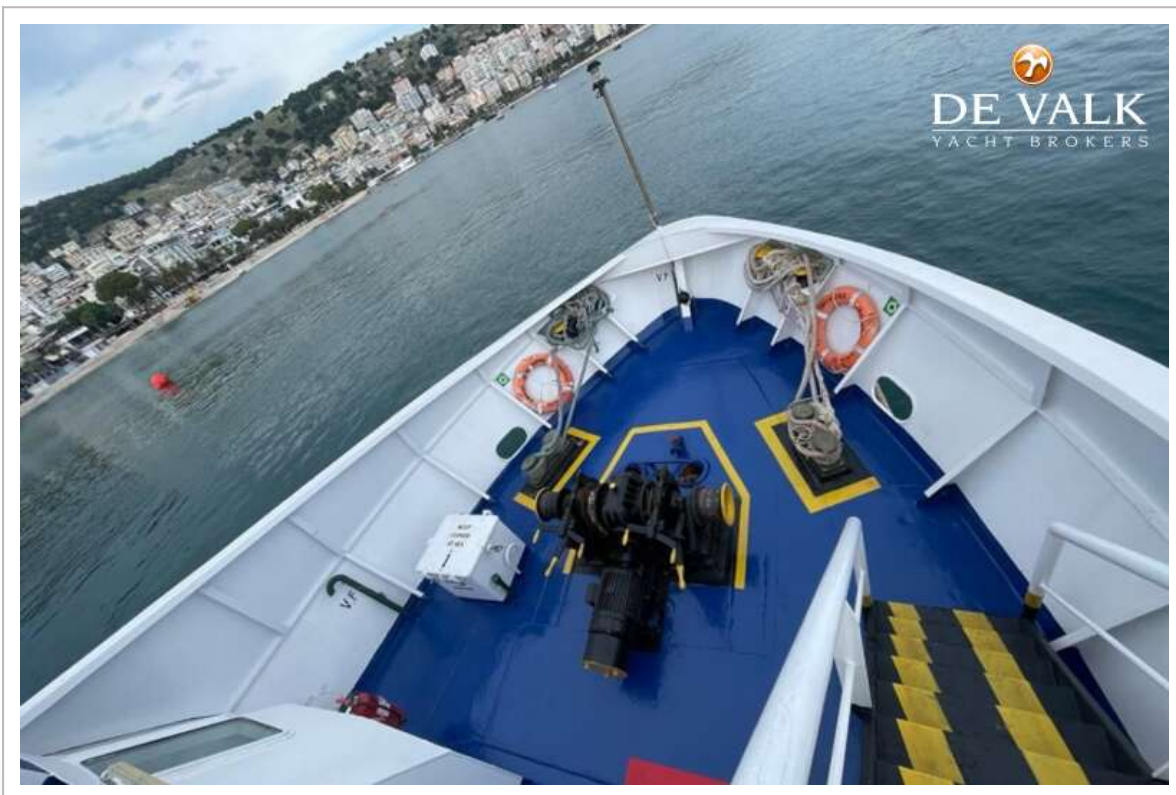
<b>Ankerketting</b>	150 m New
<b>Ankerlier</b>	elektrisch
<b>Zwemvesten</b>	ja
<b>Stootkussens</b>	ja
<b>Landvasten</b>	ja
<b>Brandblusser</b>	ja



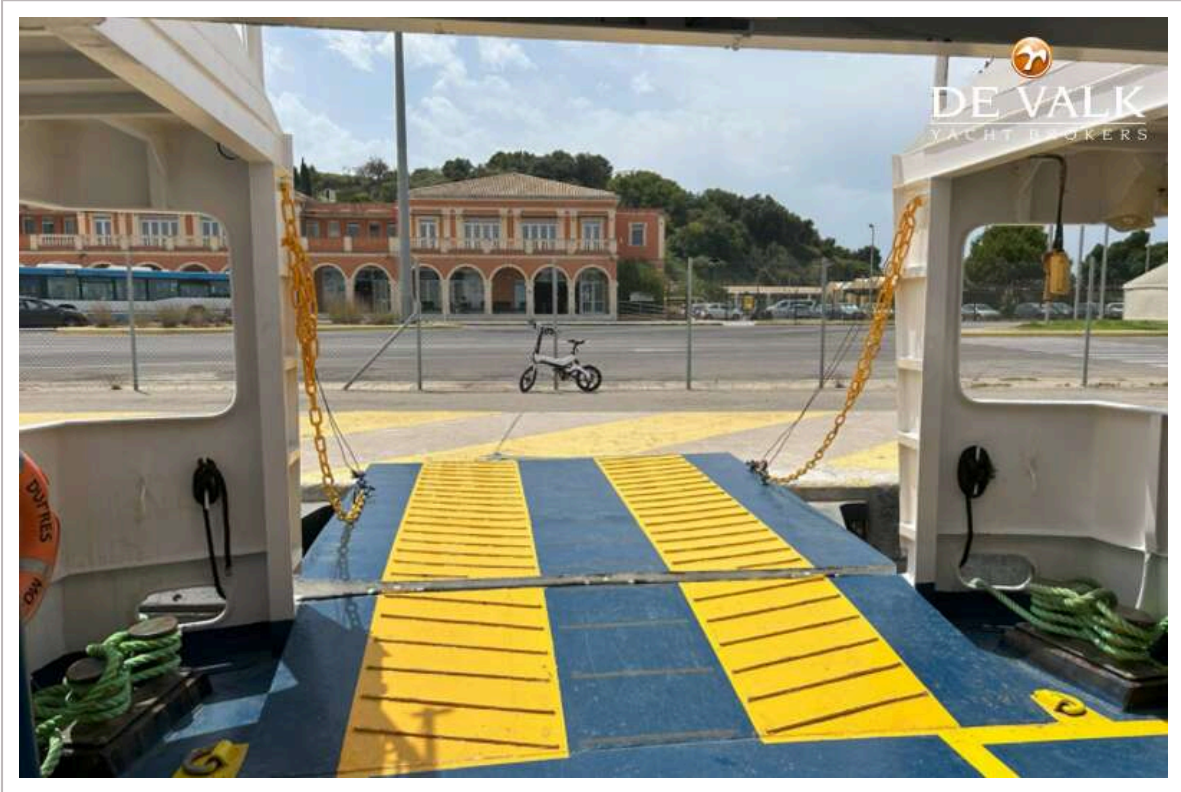
# CAR/PASSENGERS FERRY 33



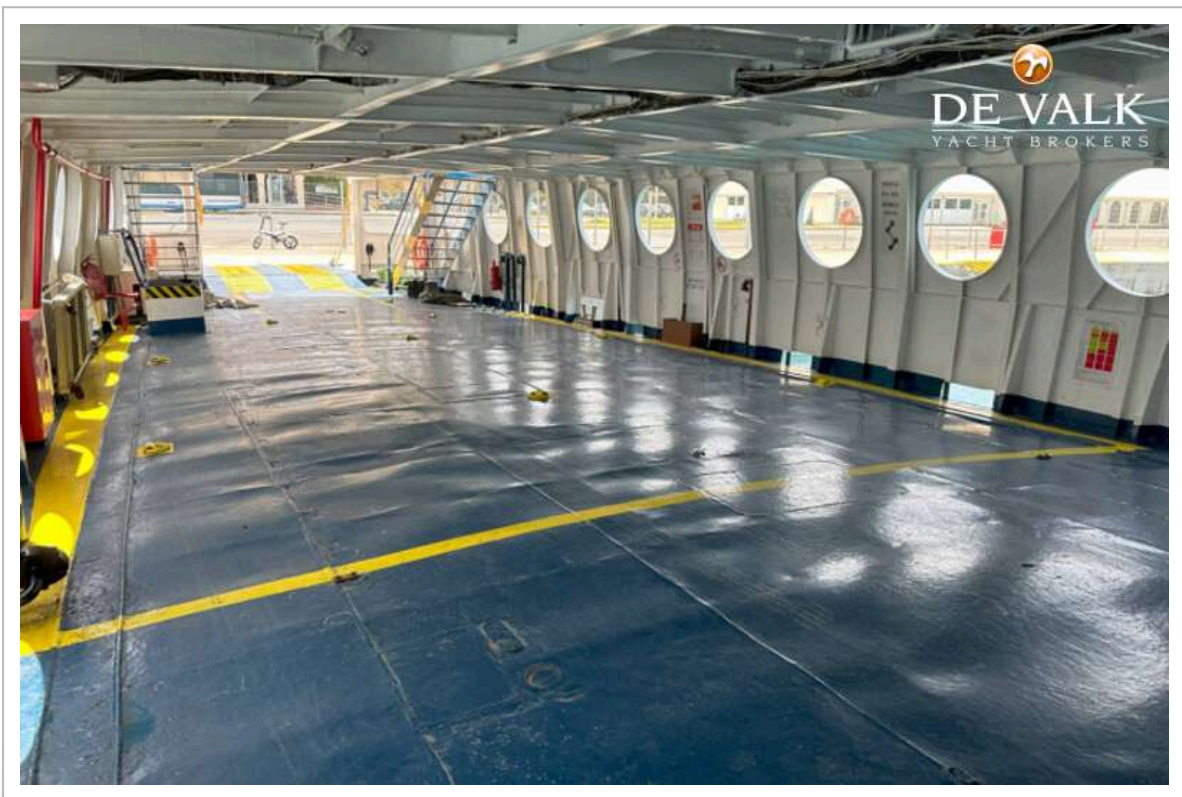
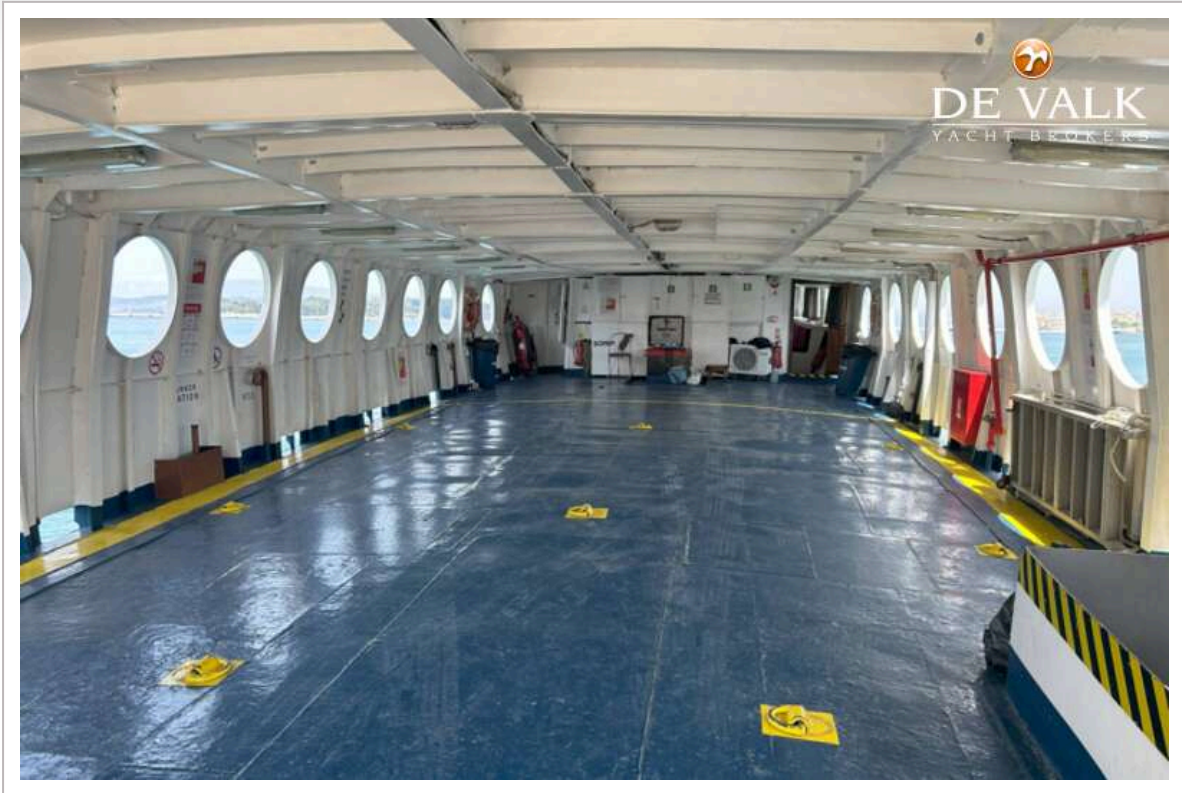
# CAR/PASSENGERS FERRY 33



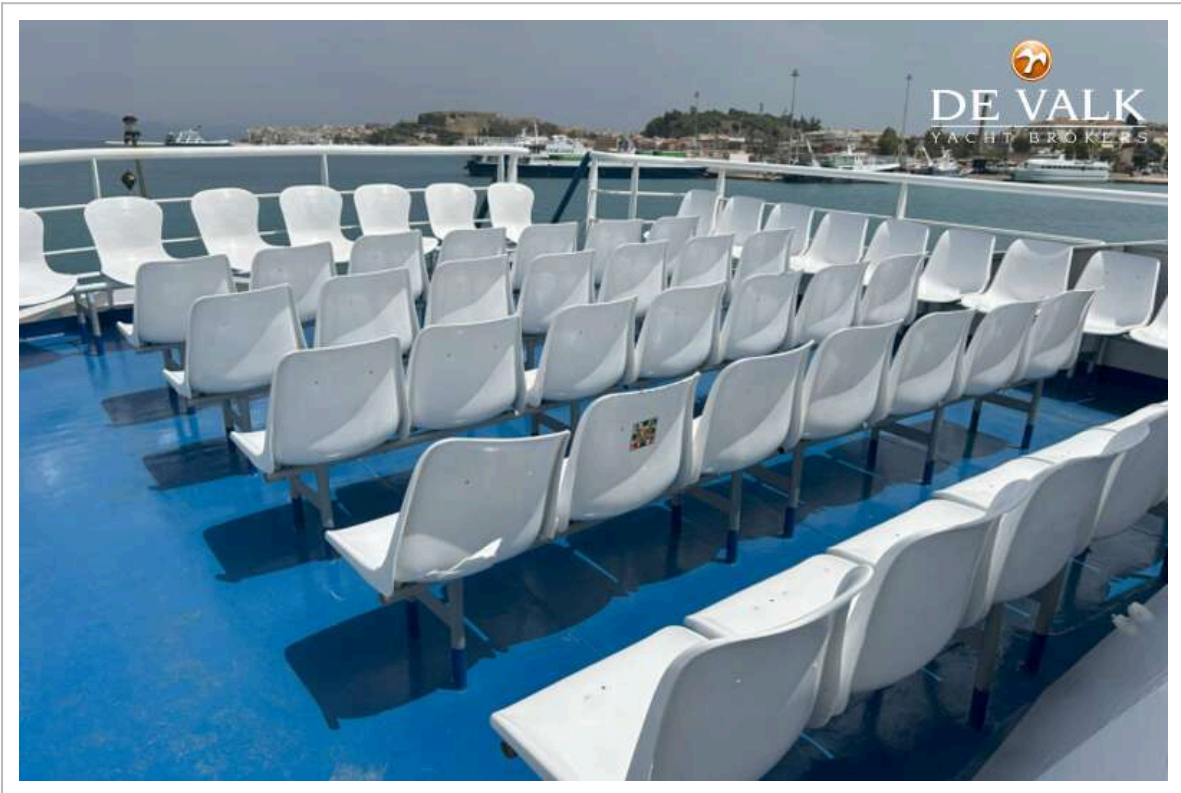
CAR/PASSENGERS FERRY 33



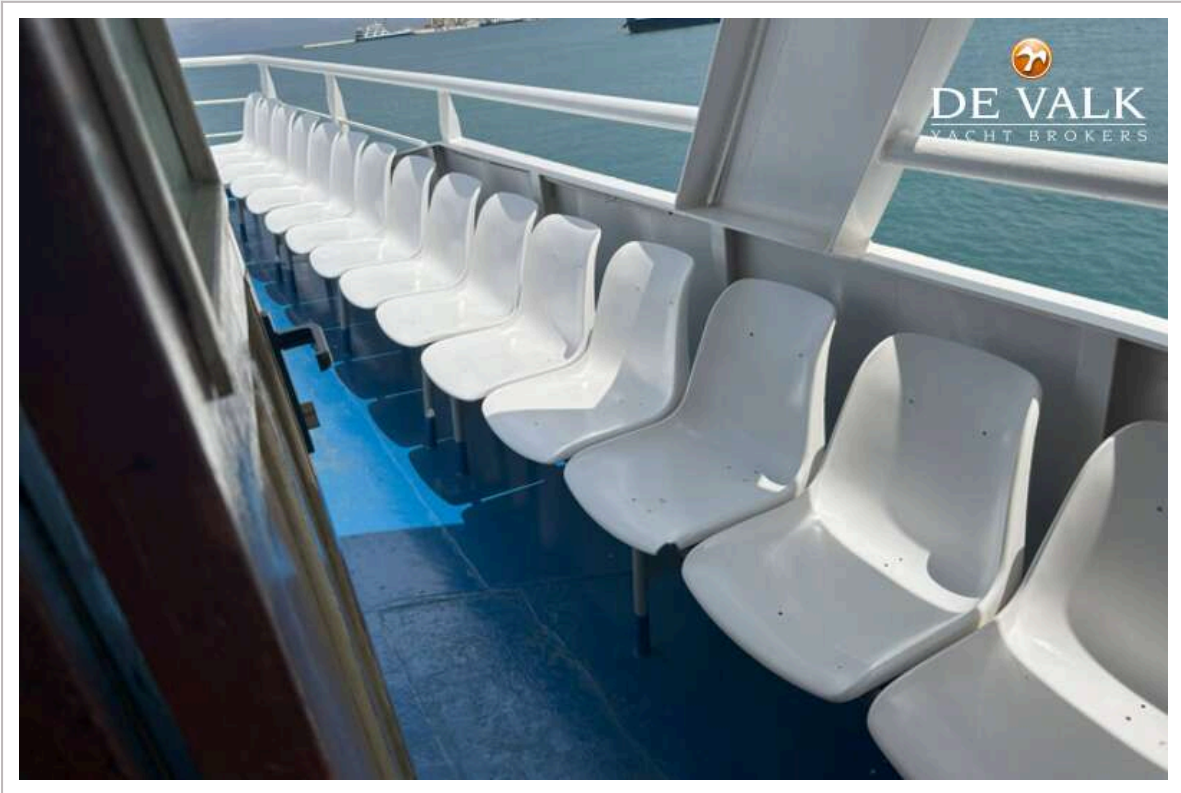
# CAR/PASSENGERS FERRY 33



CAR/PASSENGERS FERRY 33



CAR/PASSENGERS FERRY 33



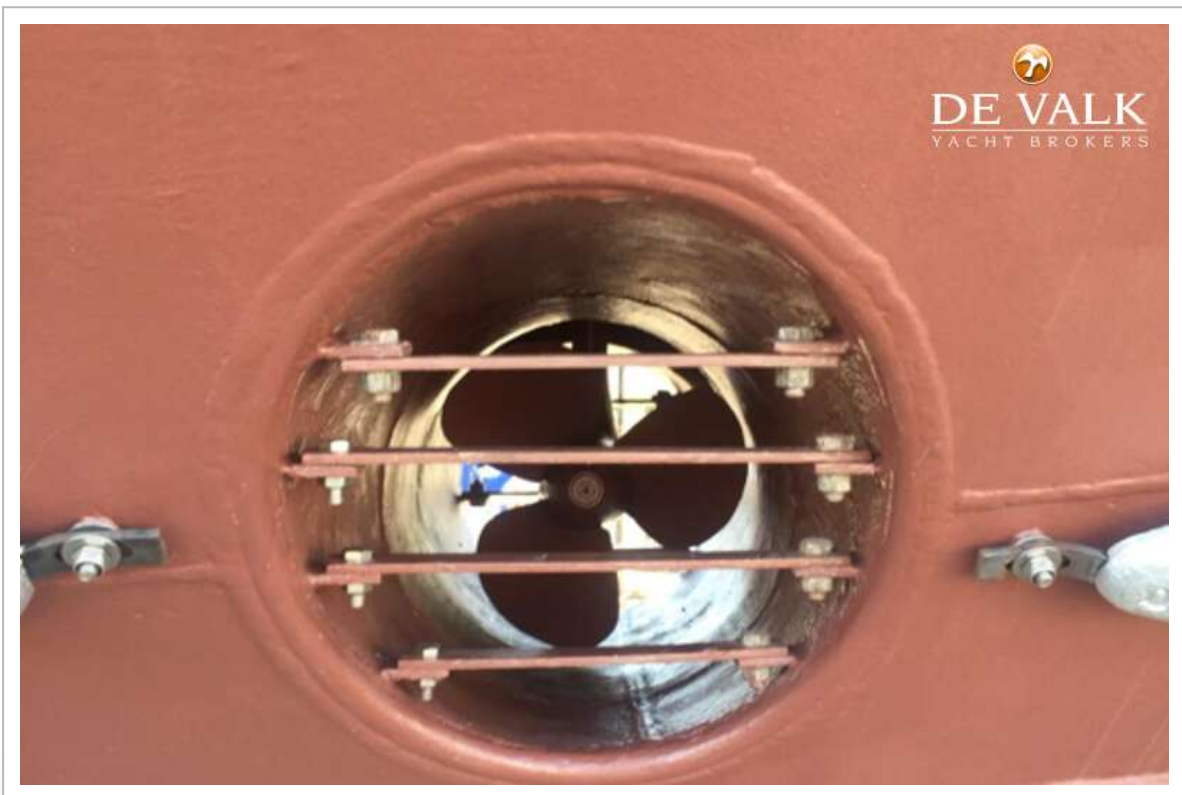
CAR/PASSENGERS FERRY 33



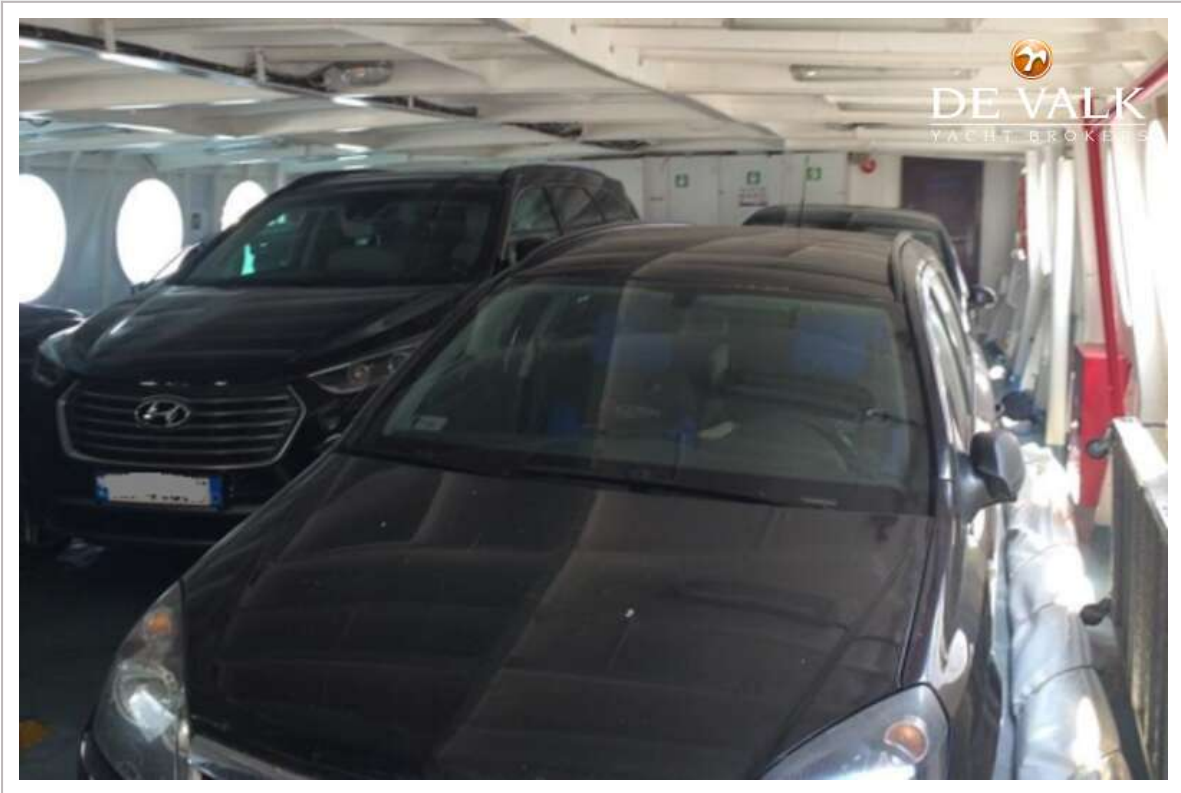
CAR/PASSENGERS FERRY 33



# CAR/PASSENGERS FERRY 33



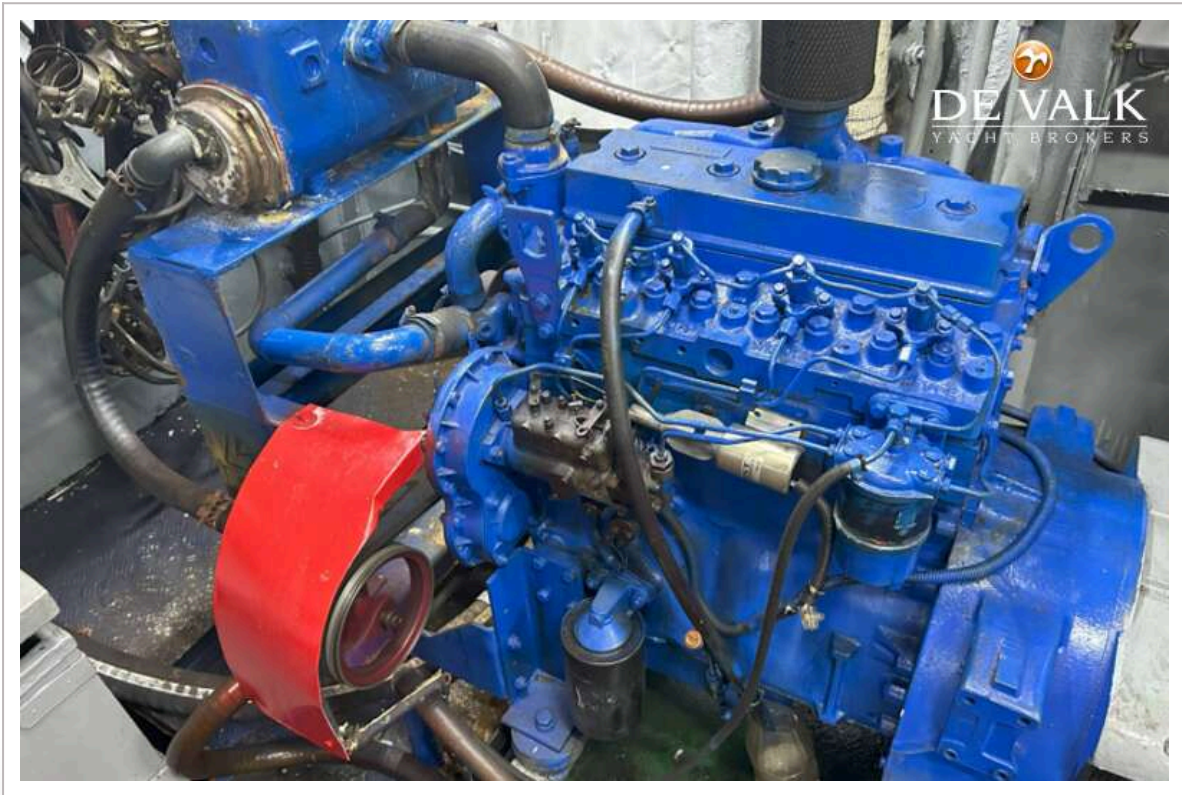
CAR/PASSENGERS FERRY 33

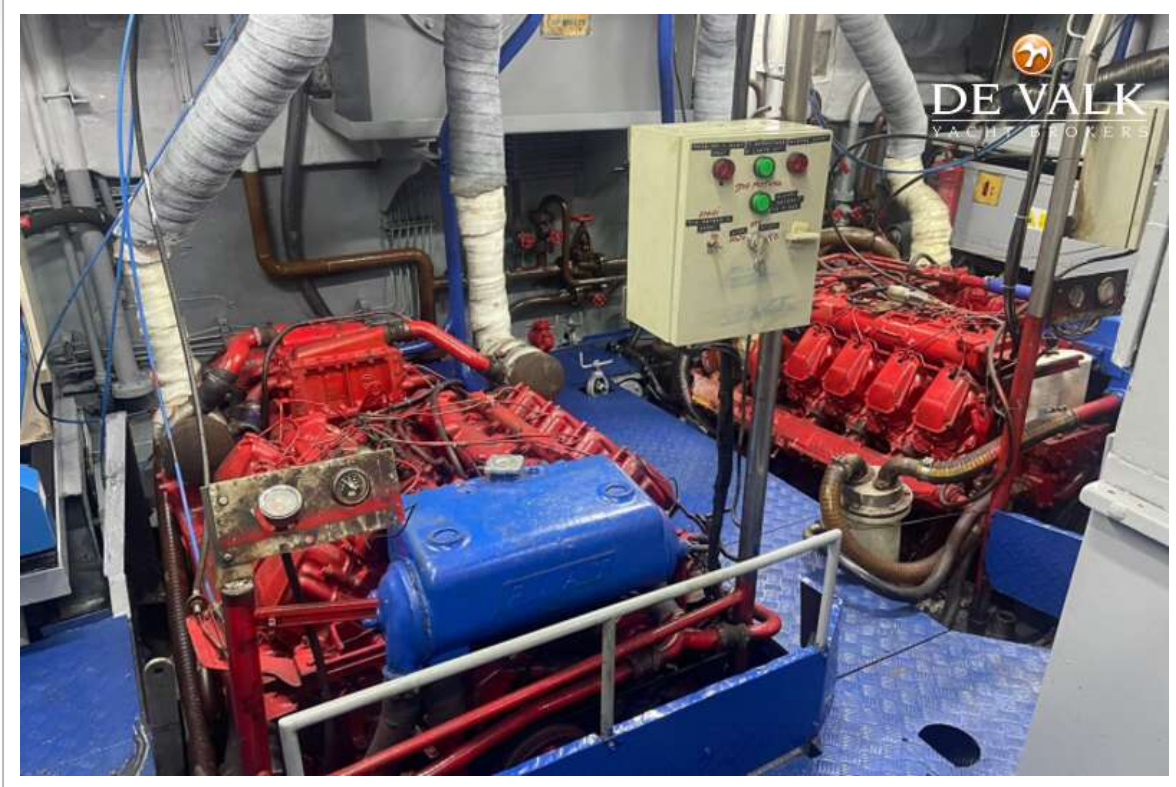


CAR/PASSENGERS FERRY 33

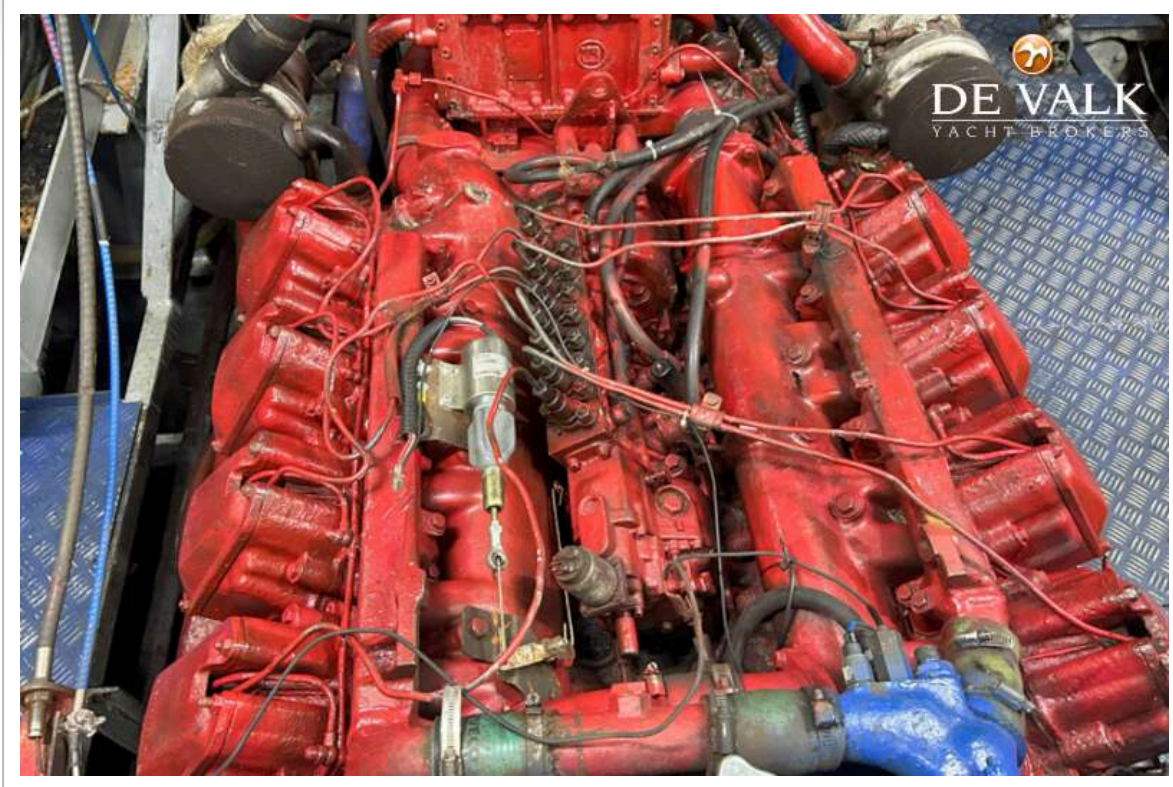


CAR/PASSENGERS FERRY 33

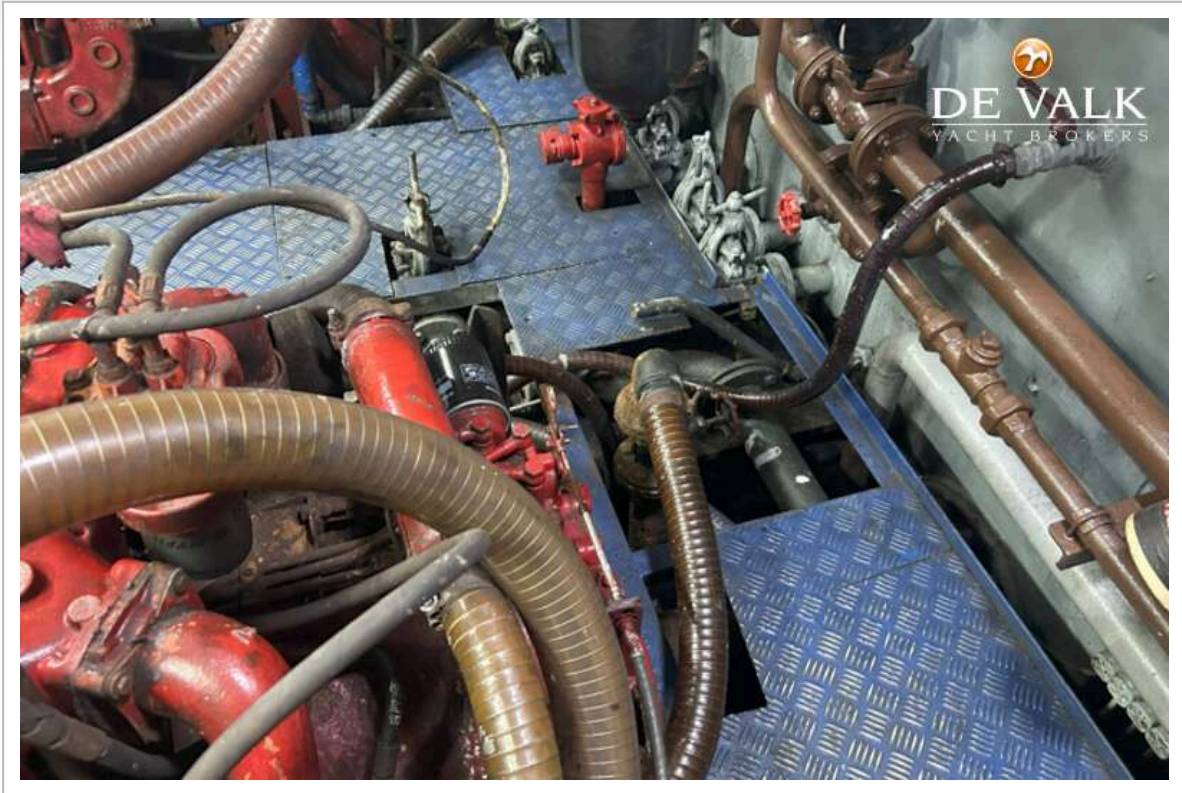




# CAR/PASSENGERS FERRY 33

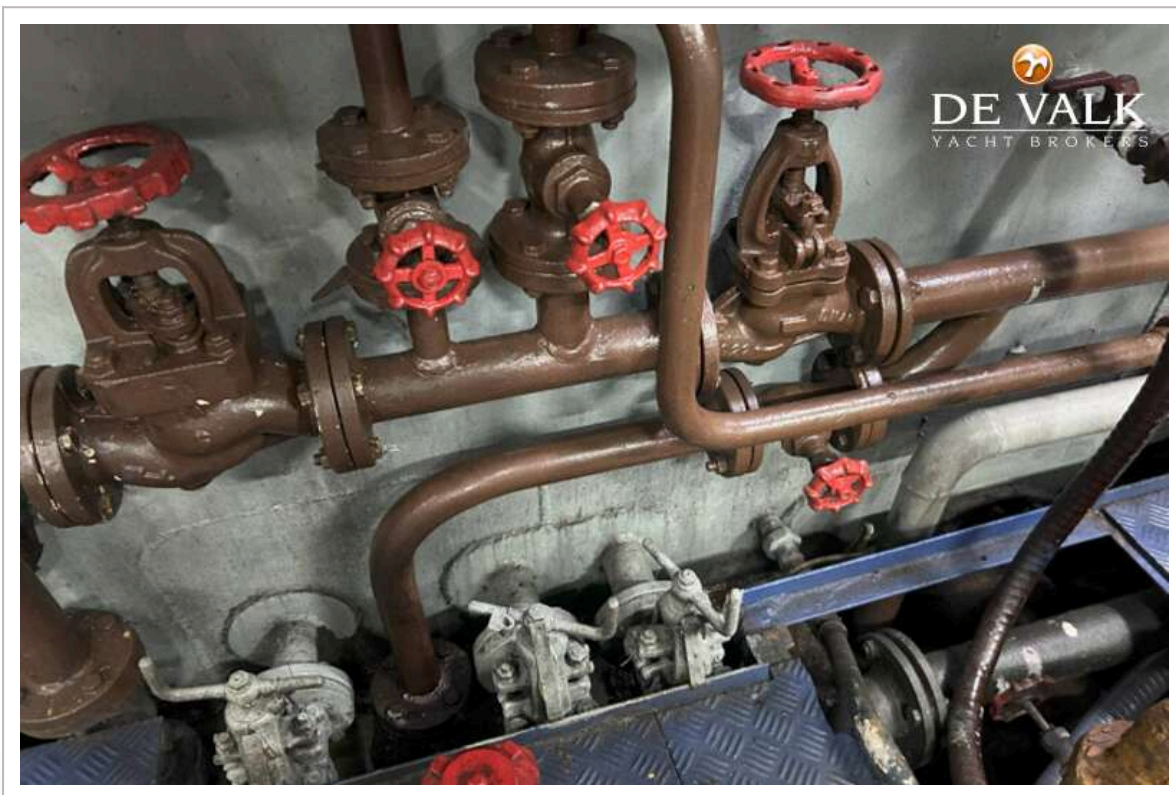






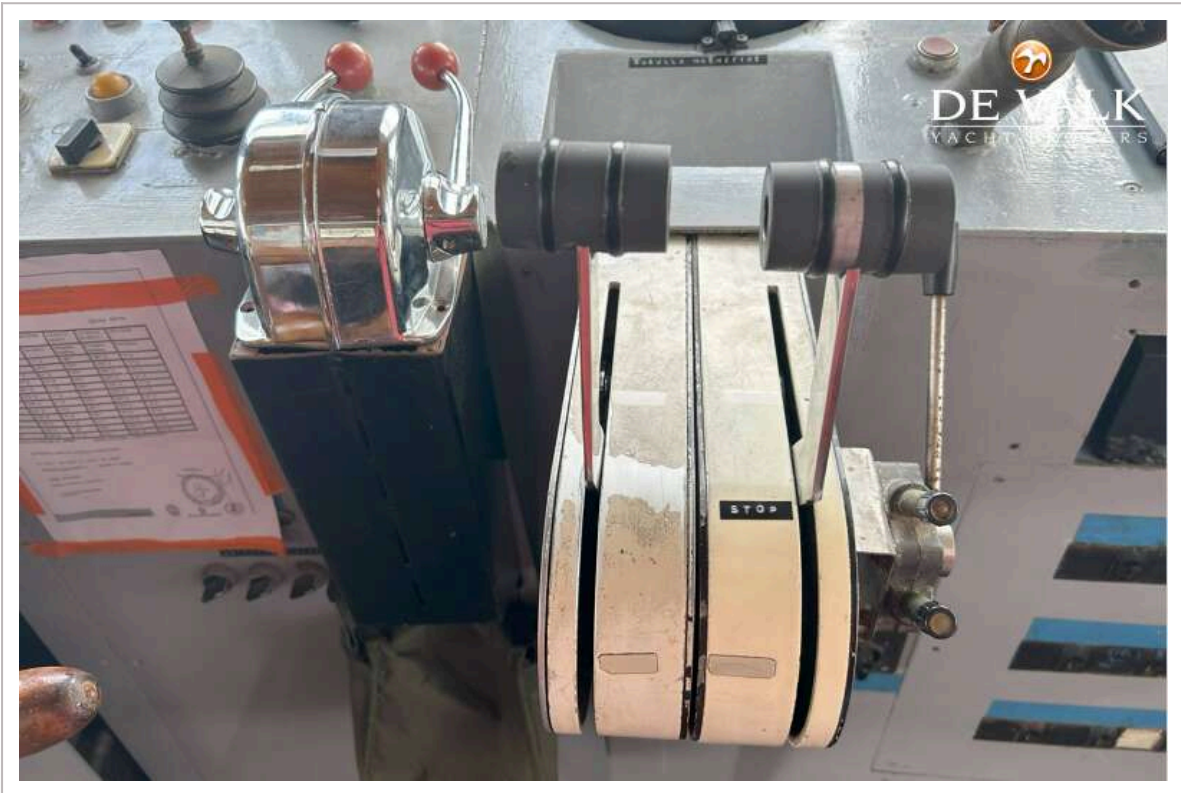
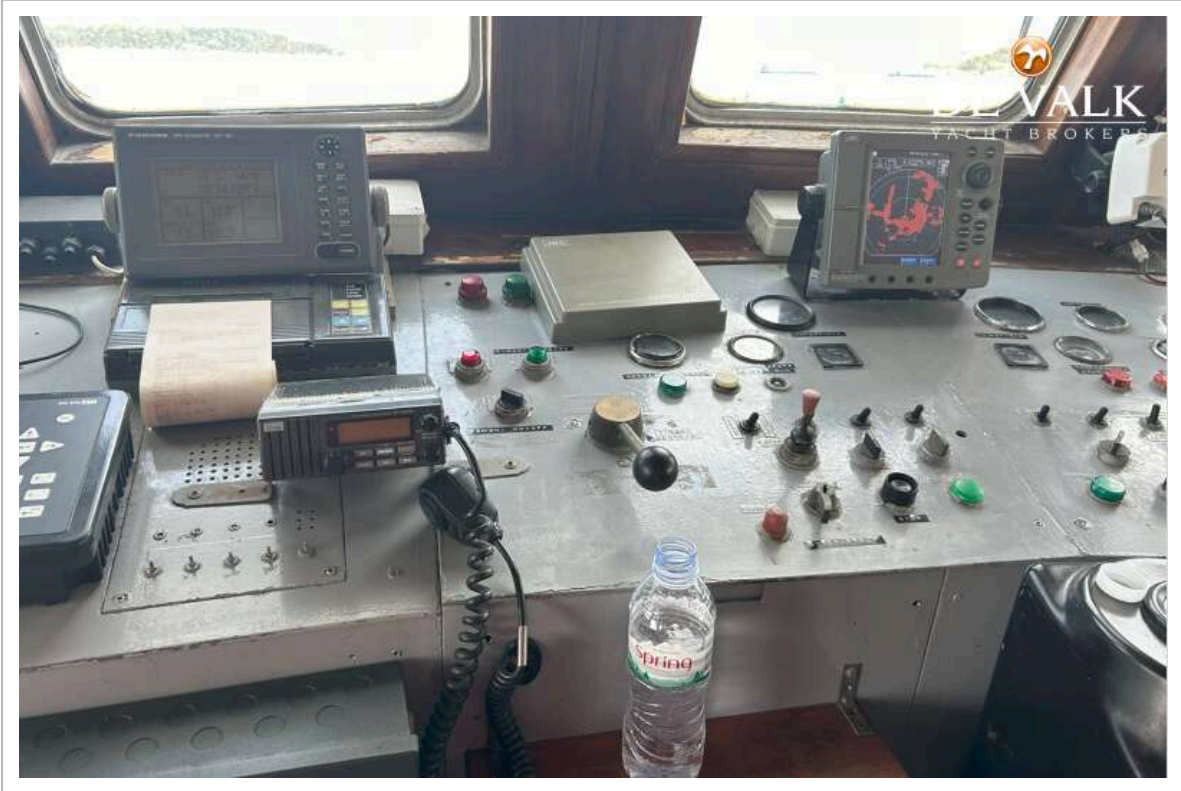


# CAR/PASSENGERS FERRY 33

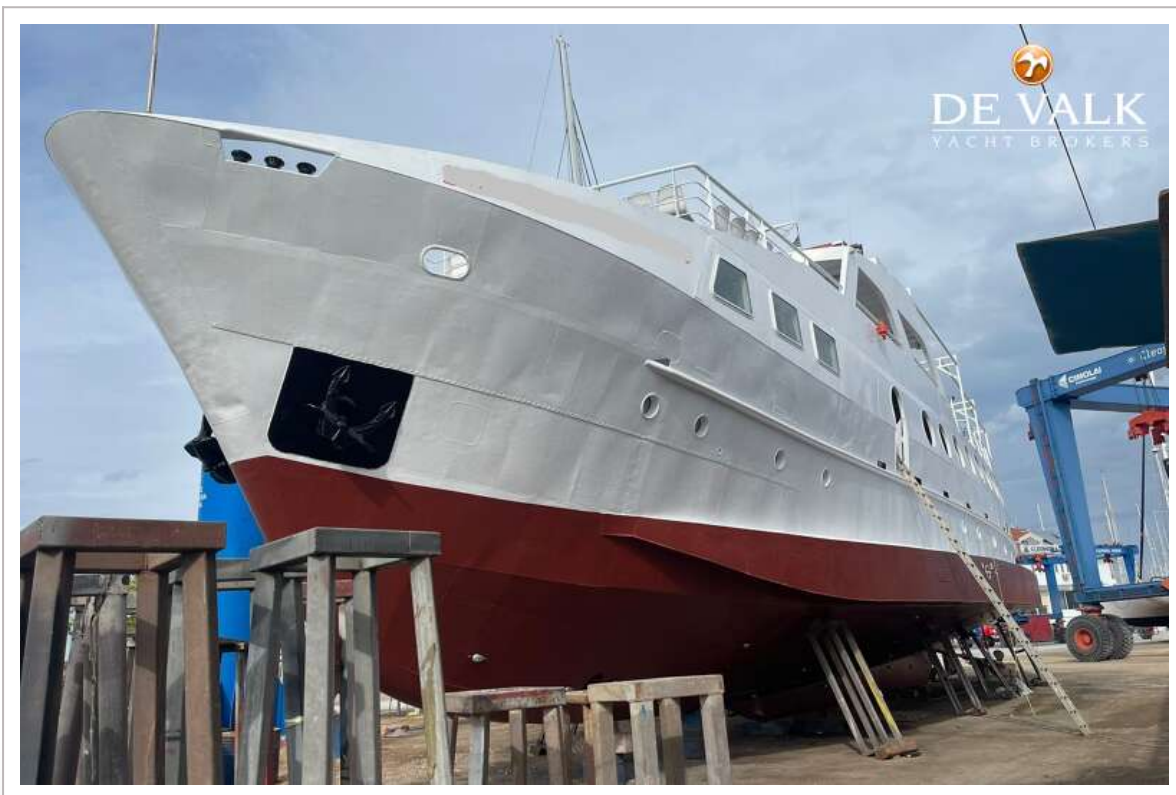




# CAR/PASSENGERS FERRY 33



# CAR/PASSENGERS FERRY 33



# CAR/PASSENGERS FERRY 33

