



DE VALK
YACHT BROKERS



CAR/PASSENGERS FERRY 40



DE VALK
YACHT BROKERS

CAR/PASSENGERS FERRY 40

VAN DE MAKELAAR

The CAR/PAX FERRY 40m was built and served in Greek waters under previous names before adopting the current name. It operates under the Albanian flag now and has a capacity of 300 passengers and 20 cars. The engines have been overhauled and they have 500 hours since last overhaul.

Sofia Iliia-Salvanou

SPECIFICATIES

Afmetingen	40.10 x 8.78 x 2.70 (m)	Bouwer	ARGO SHIPBUILDING PERAMA
Bouwjaar	1970	Hutten	
Materiaal	Staal	Slaapplaatsen	
Motor(en)	2 x MTU 8V 396 TC diesel	Pk/Kw	2 x 1,050.00 (pk), 772.80 (kw)
Vraagprijs	€ 550.000 (BTW Vrijgesteld)	Ligplaats	bij verkoopkantoor

CONTACT

Kantoor	De Valk Corfu	Telefoon	(+30) 6948681503
Adres	New Port of Corfu, near Gouvia Marina 490 83 Corfu GR	E-mail	corfu@devalk.nl

DISCLAIMER

Hoewel er uiterste zorg besteed is aan de correctheid, volledigheid en actualiteit van onze informatie kunnen hieraan geen rechten worden ontleend.



CAR/PASSENGERS FERRY 40

ALGEMEEN

Model	CAR/PASSENGERS FERRY 40
Type	motorjacht
Lengte (m)	40,10
Breedte (m)	8,78
Diepgang (m)	2,70
Bouwjaar	1970
Gebouwd door	ARGO SHIPBUILDING PERAMA
Land	Griekenland
Bruto tonnage	293
Netto tonnage	105
Romp materiaal	staal
Romp kleur	rood WHITE &
Materiaal opbouw	staal
Dek materiaal	staal
Raamlijsten	staal
Raammateriaal	normaal glas
Brandstoftank (liter)	ja
Inhoudsmeter (brandstoftank)	ja
Brandstof dagtank (liter)	ja
Drinkwatertank (liter)	ja
Stuurwiel	ja
Binnen stuurstand	ja

ACCOMMODATIE

Airco	ja
Koelkast	ja
Koffiezetapparaat	ja
Kommaliewant	ja



CAR/PASSENGERS FERRY 40

MOTOR(EN)

Aantal motoren	2
Merk	MTU
Type	8V 396 TC
Pk	1050
kW	772.80
Brandstof	diesel
Gereviseerd in jaar	2024
Maximale snelheid (kn)	13
Kruissnelheid (kn)	12,5
Verbruik (ltr/uur)	14,5
Motoruren	3000
Aandrijving	schroefas
Schroefas afdichting	ja
Generator	ja
Accu's	ja
Startaccu	ja
Lichtaccu	ja
Accu monitor	ja
Acculader	ja
Walstroom	ja

NAVIGATIE

Kompas	ja
Marifoon	ja
GPS	ja
Navigatieverlichting	ja

UITRUSTING

Bimini	ja
--------	----



CAR/PASSENGERS FERRY 40

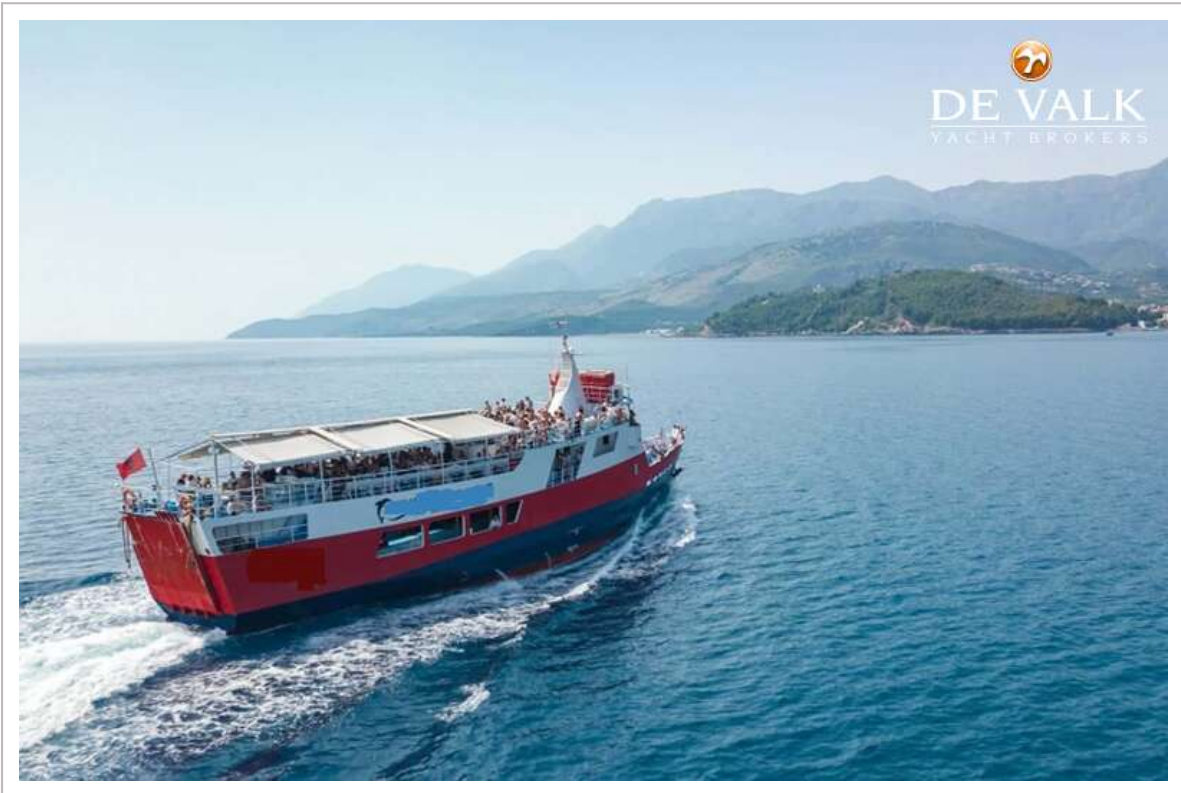
Zonnetent	ja
Loopplank	ja
Anker	ja
Ankerketting	ja
Ankerlier	ja
Zeereeling	ja
Reddingsvlot	ja
Zwemvesten	ja
Stootkussens	ja
Gereedschap	ja
Brandblusser	ja
Brandblusser in motorkamer	ja



CAR/PASSENGERS FERRY 40



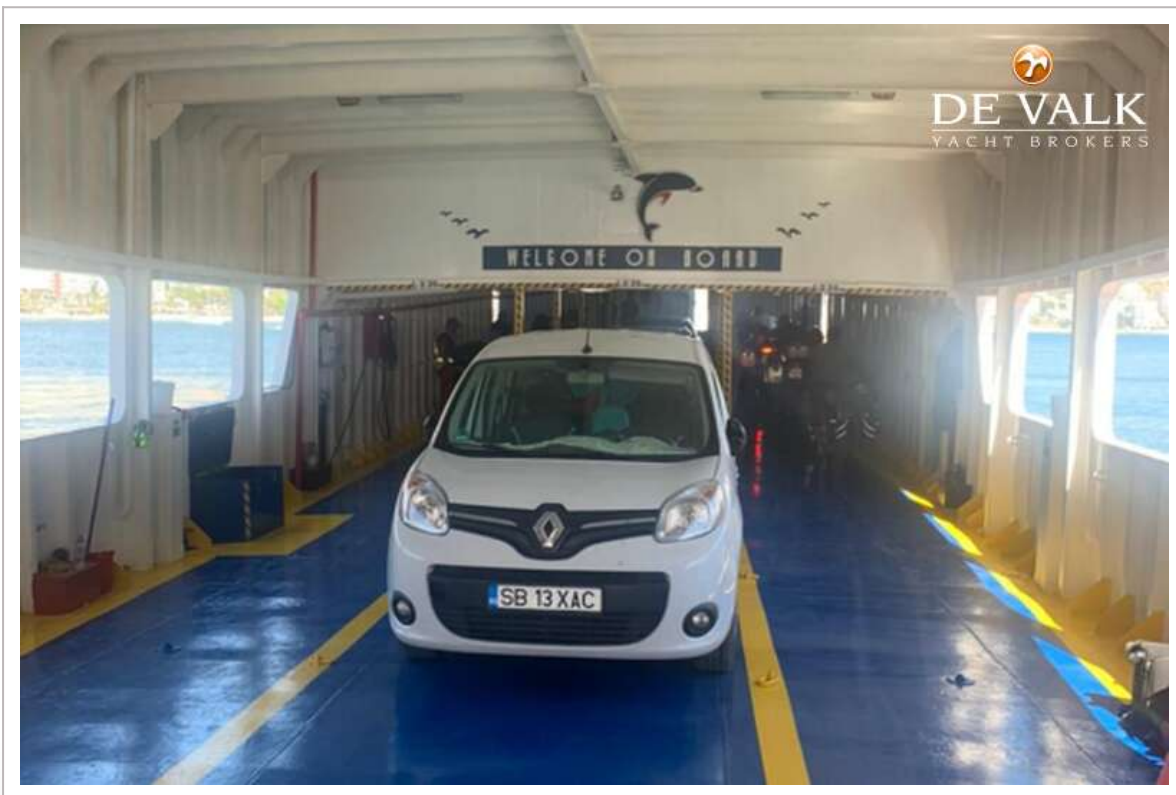
CAR/PASSENGERS FERRY 40



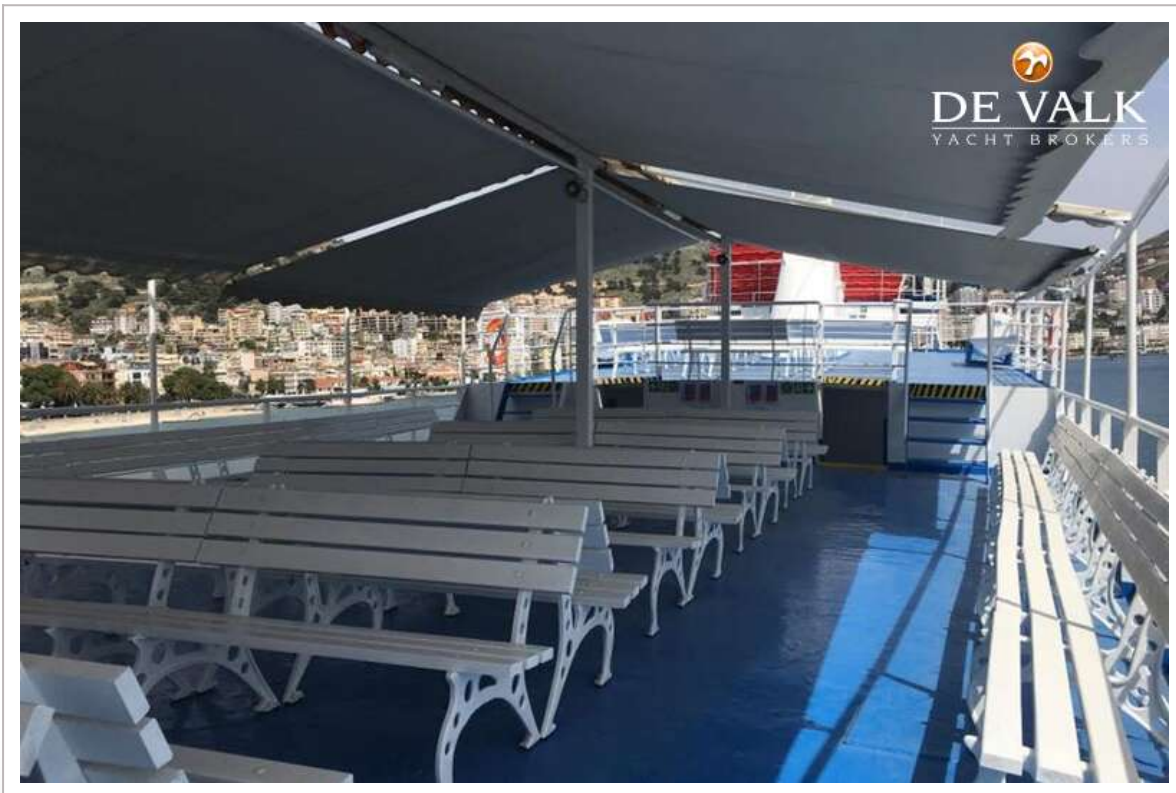
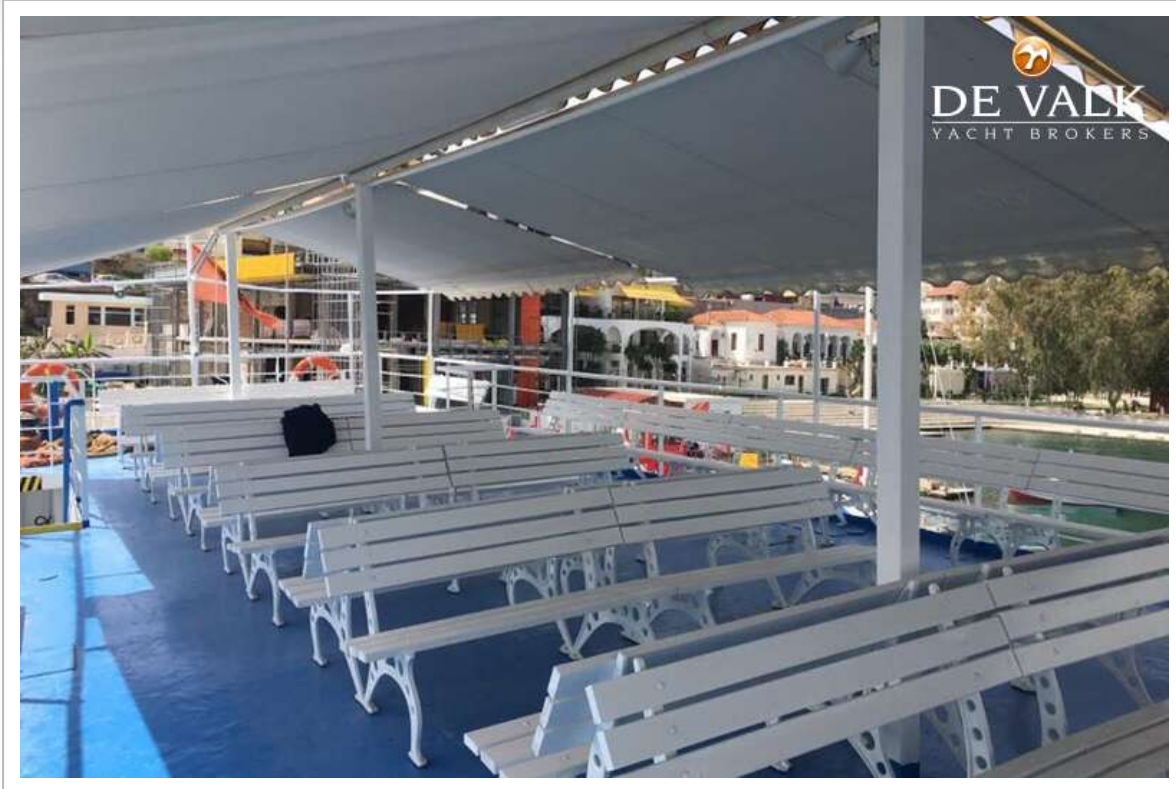
CAR/PASSENGERS FERRY 40



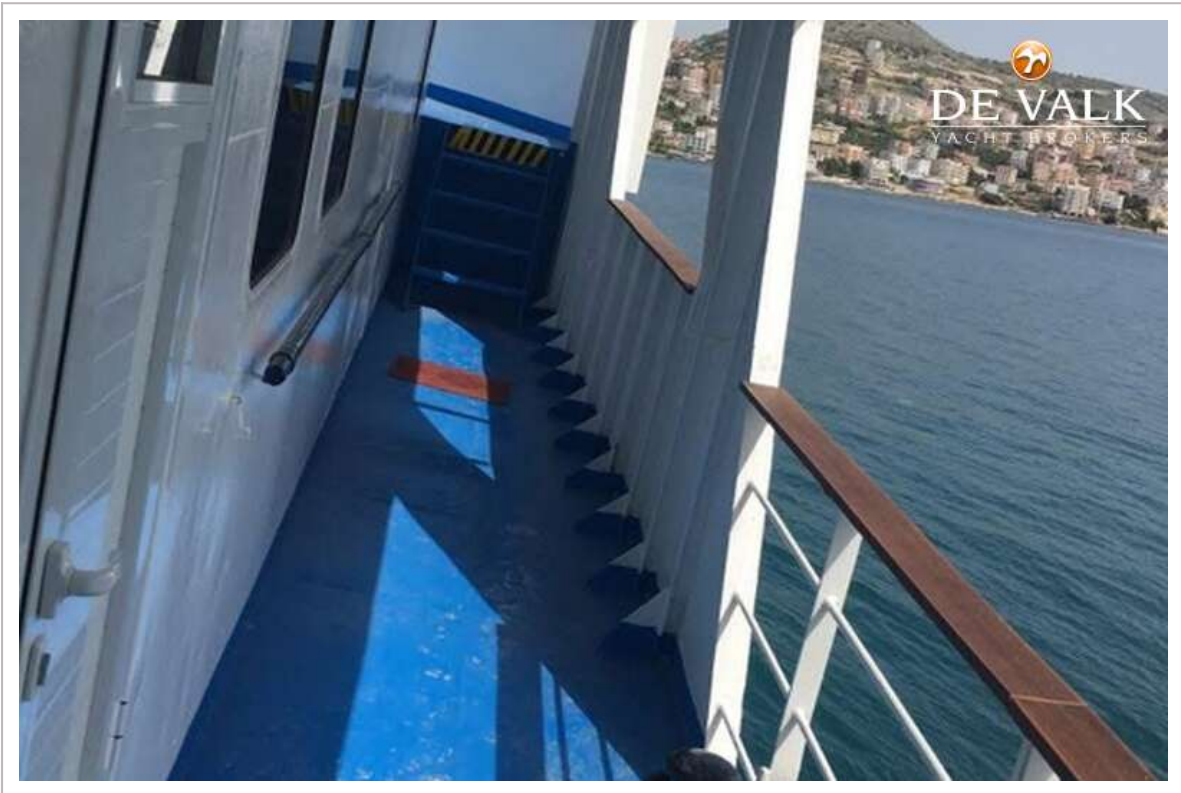
CAR/PASSENGERS FERRY 40



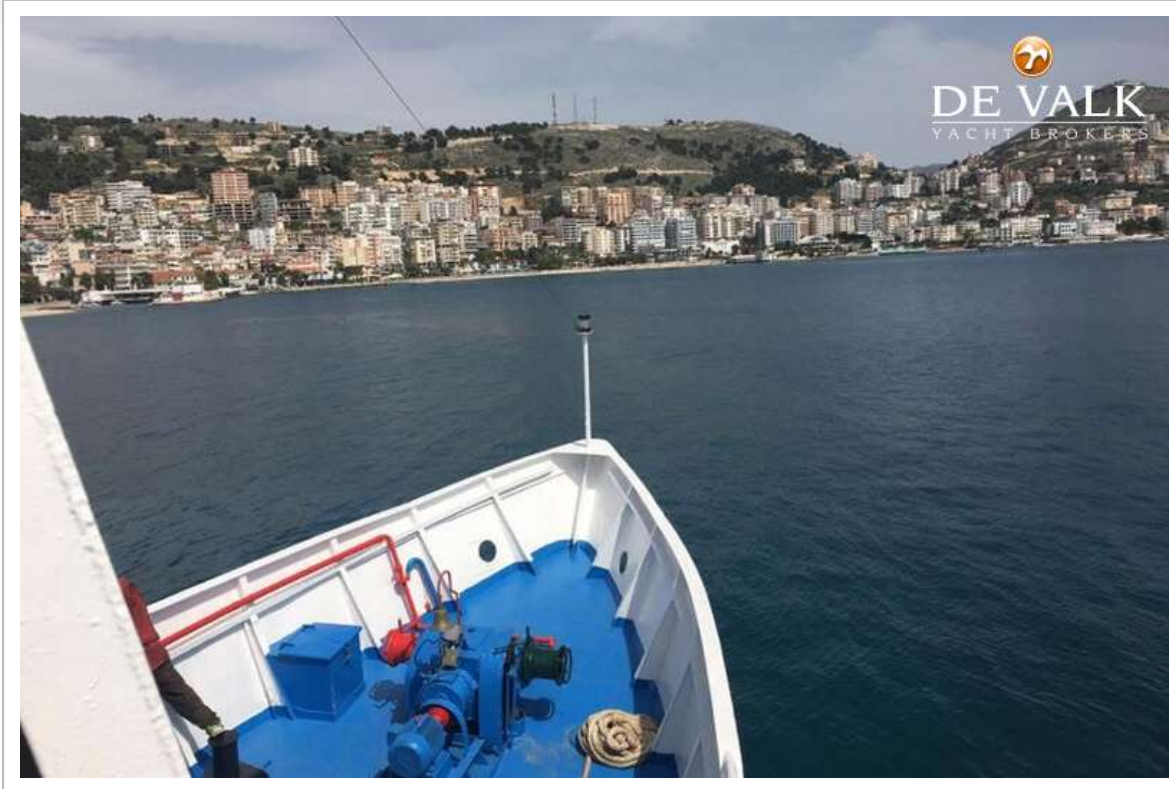
CAR/PASSENGERS FERRY 40



CAR/PASSENGERS FERRY 40



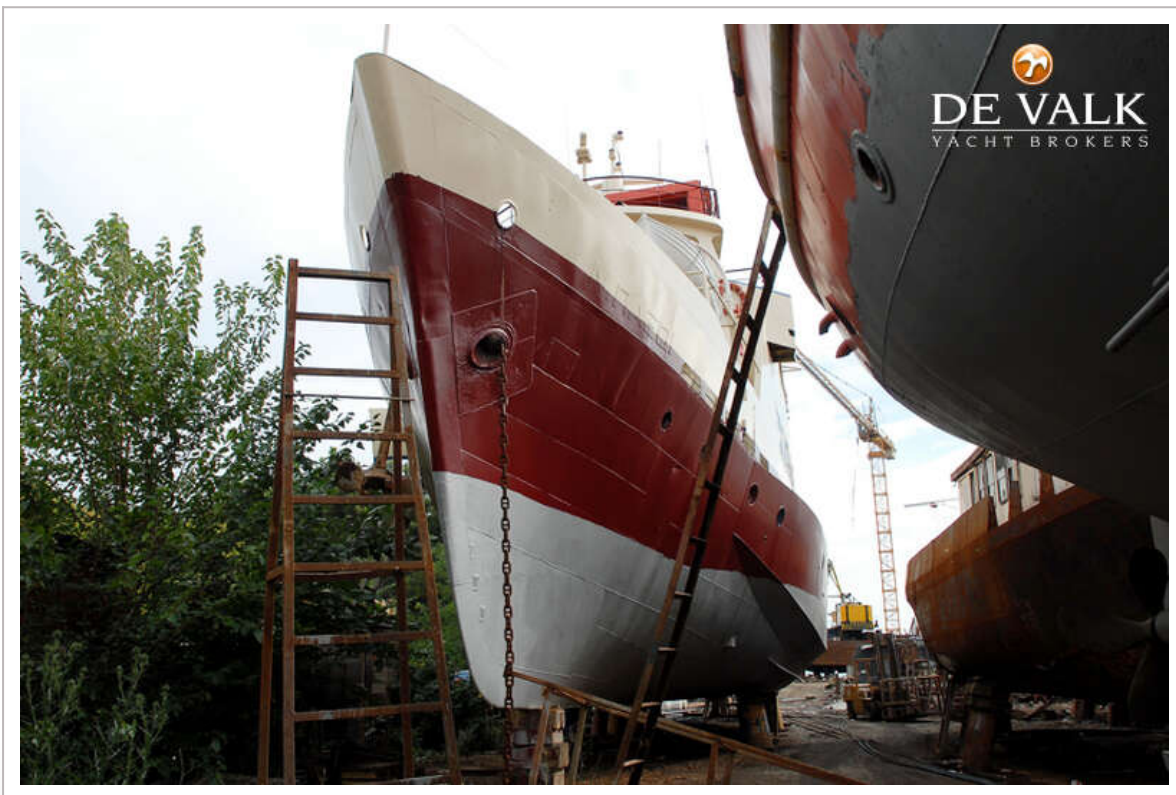
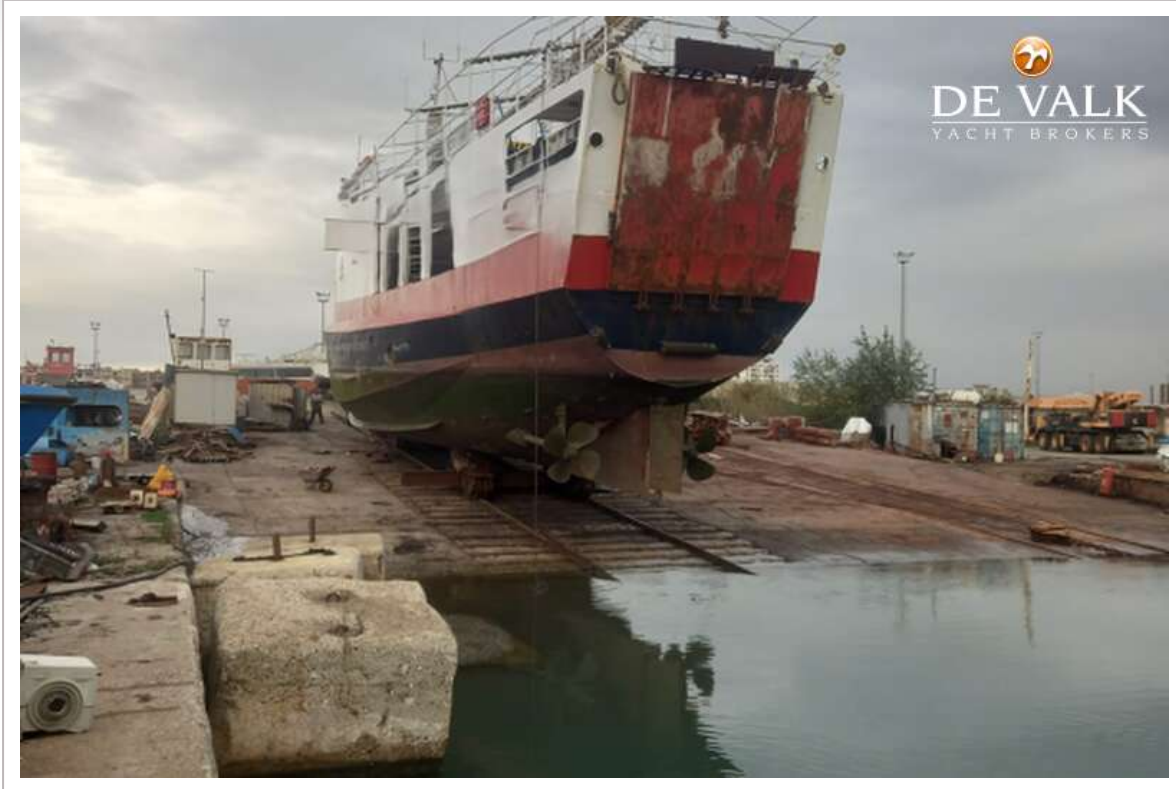
CAR/PASSENGERS FERRY 40



CAR/PASSENGERS FERRY 40



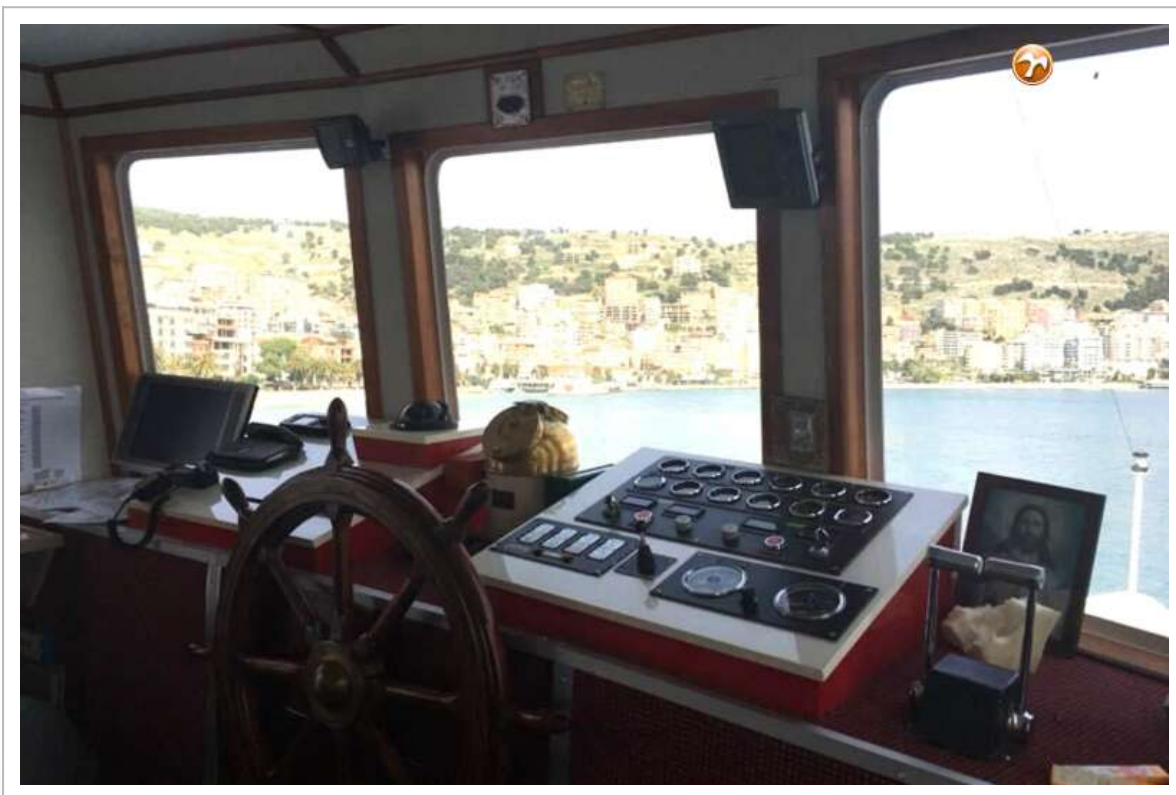
CAR/PASSENGERS FERRY 40



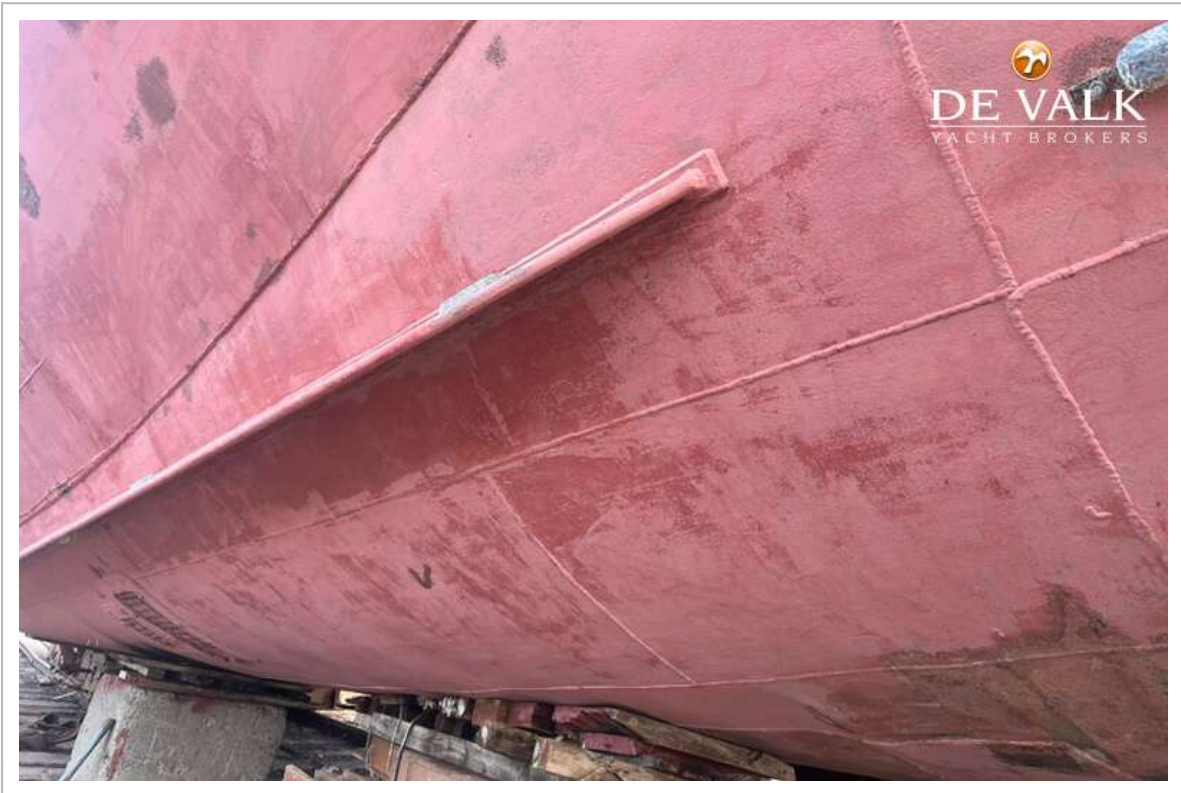
CAR/PASSENGERS FERRY 40



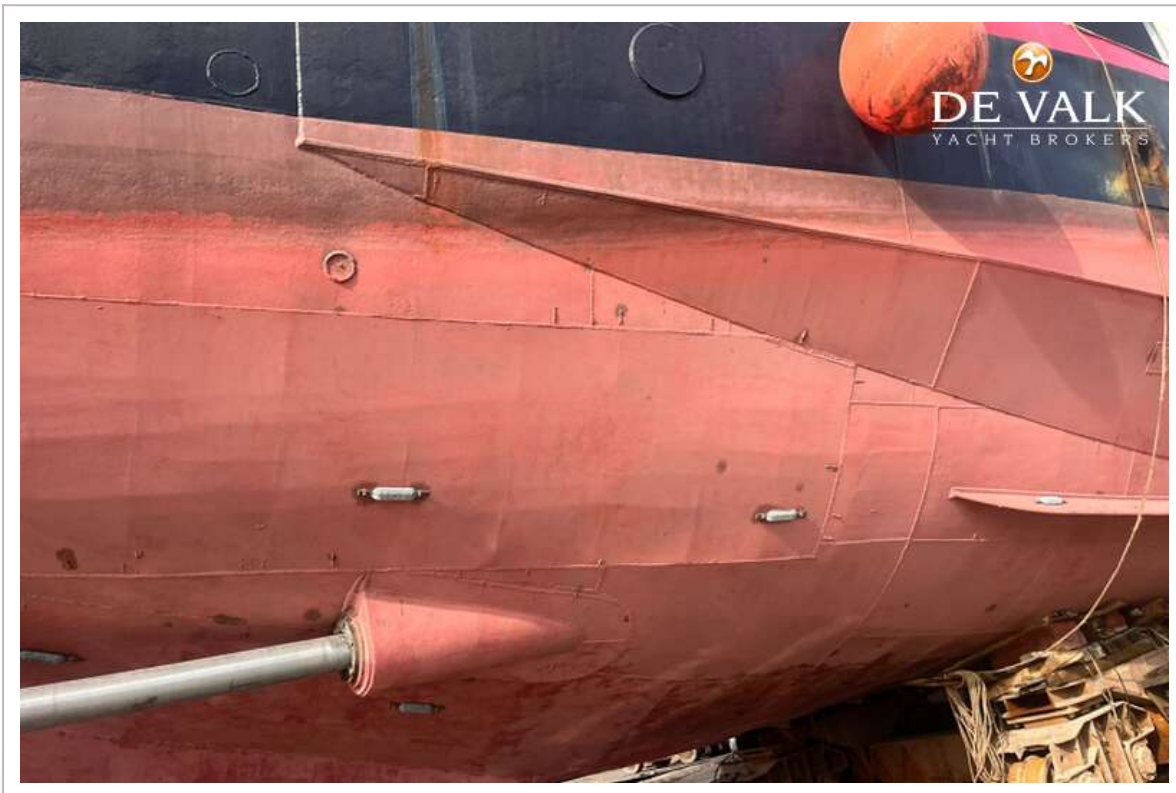
CAR/PASSENGERS FERRY 40



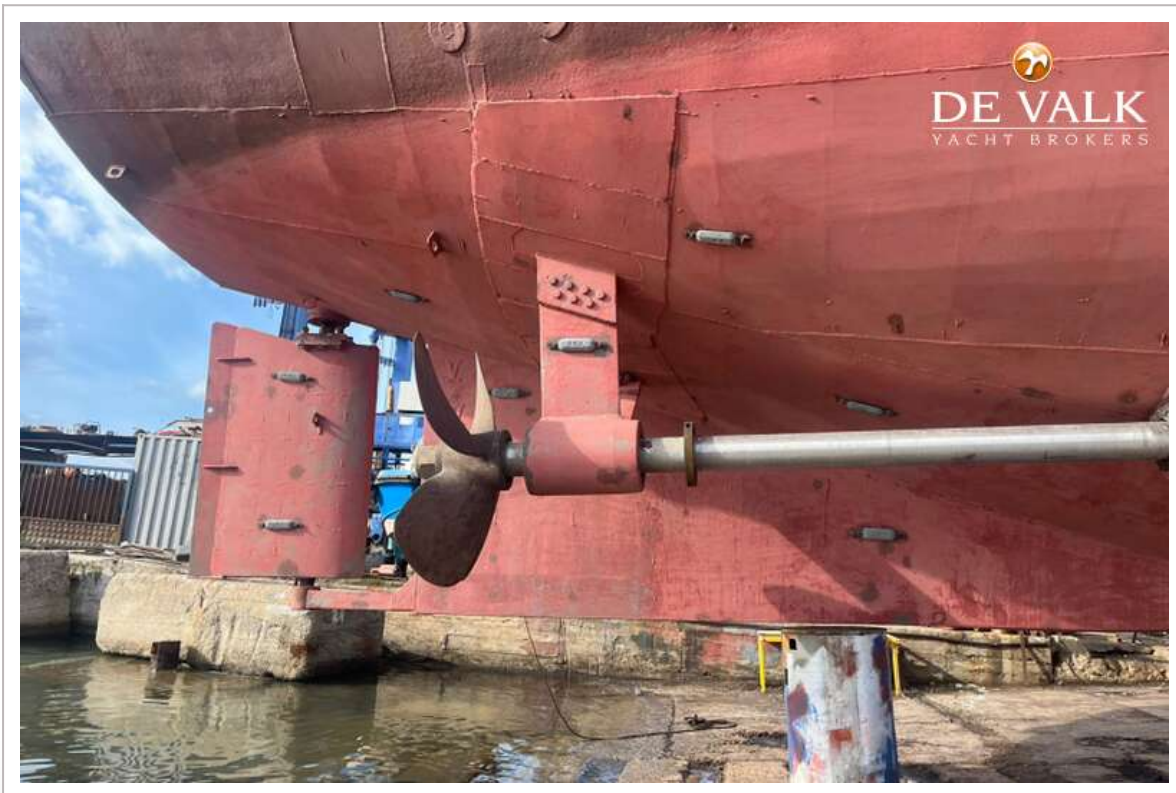
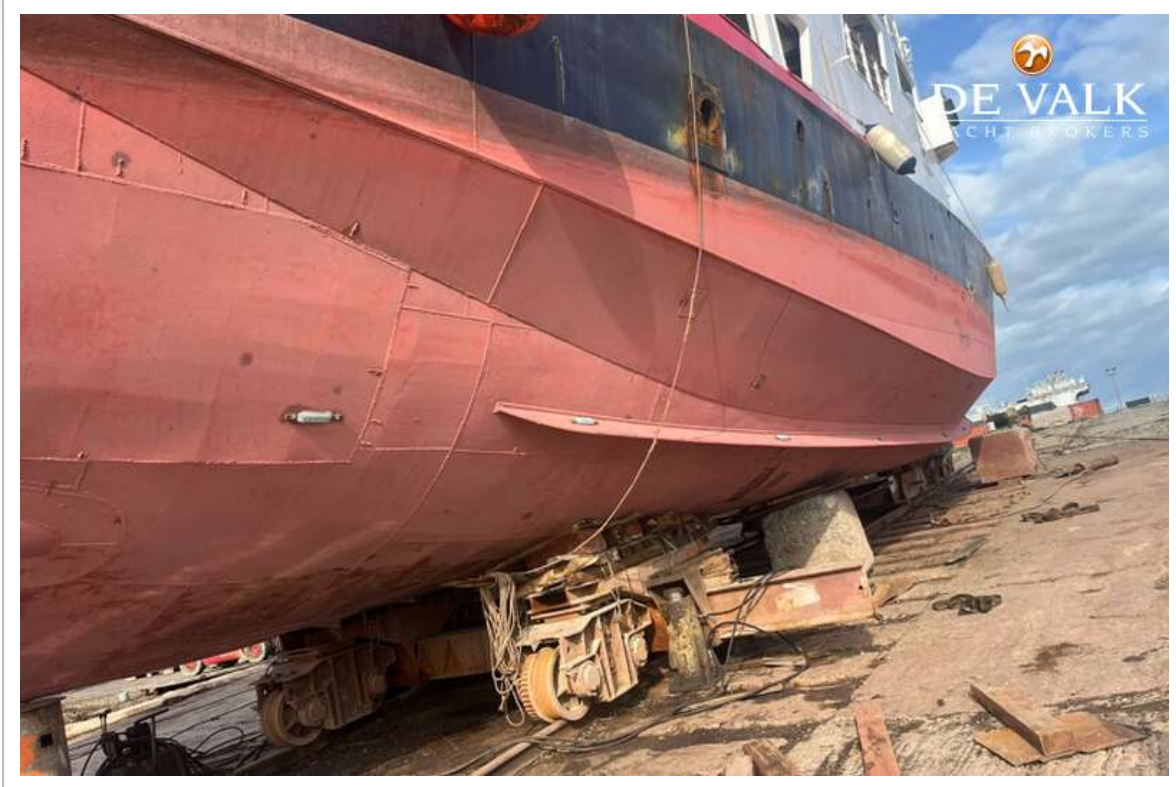
CAR/PASSENGERS FERRY 40



CAR/PASSENGERS FERRY 40



CAR/PASSENGERS FERRY 40



CAR/PASSENGERS FERRY 40

