



DE VALK  
YACHT BROKERS

## GRAND BANKS 42 CLASSIC



DE VALK  
YACHT BROKERS

# GRAND BANKS 42 CLASSIC

## VAN DE MAKELAAR

Classic Grand Banks 42 Trawler for comfortable long distance cruising that has been refitted and with her engines overhauled. A twin engines model with a range of 1200 miles. One of the most popular boat types in the world.

*Sofia Iliia-Salvanou*

## SPECIFICATIES

<b>Afmetingen</b>	13.17 x 4.29 x 1.70 (m)	<b>Bouwer</b>	AMERICAN MARINE LTD
<b>Bouwjaar</b>	1972	<b>Hutten</b>	2
<b>Materiaal</b>	Hout	<b>Slaapplaatsen</b>	6
<b>Motor(en)</b>	2 x FORD LEHMAN diesel	<b>Pk/Kw</b>	2 x 120.00 (pk), 88.32 (kw)
<b>Vraagprijs</b>	€ 68.000 (BTW Vrijgesteld)	<b>Ligplaats</b>	elders / niet bij verkoopkantoor

## CONTACT

<b>Kantoor</b>	De Valk Corfu	<b>Telefoon</b>	(+30) 6948681503
<b>Adres</b>	New Port of Corfu, near Gouvia Marina 490 83 Corfu GR	<b>E-mail</b>	corfu@devalk.nl

## DISCLAIMER

Hoewel er uiterste zorg besteed is aan de correctheid, volledigheid en actualiteit van onze informatie kunnen hieraan geen rechten worden ontleend.



# GRAND BANKS 42 CLASSIC

## ALGEMEEN

<b>Model</b>	GRAND BANKS 42 CLASSIC
<b>Type</b>	motorjacht
<b>Lengte (m)</b>	13,17
<b>Breedte (m)</b>	4,29
<b>Diepgang (m)</b>	1,70
<b>Bouwjaar</b>	1972
<b>Gebouwd door</b>	AMERICAN MARINE LTD
<b>Land</b>	Hongkong
<b>Waterverplaatsing (t)</b>	16,9
<b>Romp materiaal</b>	hout
<b>Romp kleur</b>	wit
<b>Dek materiaal</b>	hout
<b>Afwerking dek</b>	teak 18mm thickness (screws replaced)
<b>Antifouling (jaar)</b>	2023
<b>Raamlijsten</b>	hout New timber
<b>Raammateriaal</b>	normaal glas New glasses
<b>Dekluik</b>	New teak hatch at front cabin
<b>Patrijspooten</b>	ja
<b>Flybridge</b>	Refit
<b>Radarbeugel</b>	ja
<b>Brandstoftank (liter)</b>	Two tanks total: 1000
<b>Brandstoftank 2 (liter)</b>	ja
<b>Inhoudsmeter (brandstoftank)</b>	ja
<b>Drinkwatertank (liter)</b>	Two tanks total: 800 PLUS Drinking Water Tank: 90 Lt
<b>Vuilwatertank (liter)</b>	100
<b>Vuilwatertank afvoer</b>	New pumps installed & electric toilets TMC.
<b>Stuurwiel</b>	hydraulisch Delta
<b>Binnen stuurstand</b>	ja
<b>Buiten stuurstand</b>	ja
<b>Extra info romp</b>	Hull paint DYO Synthetic, 2020, good condition.



# GRAND BANKS 42 CLASSIC

Extra info	Last haul out in May 2023
Extra info	Upholstery: NEW
Extra info	Hull: Mahogany wood & it was repaired at point above water line

## ACCOMMODATIE

Hutten	2
Slaapplaatsen	6
Interieur	Carpentry is Teak wood varnished with Epifanes Satin
Vloer	parket Satin Hemel varnished
Salon	ja
Airco	ja
Achterkajuit	ja
Keuken	ja
Aanrechtblad	ja
Spoelbak	ja
Kooktoestel	2 HOBS, Gas
Oven	Arcelik Mini-Electrical
Koelkast	X 2 (12V)
Waterdruksysteem	Renewed, and new filter installed. Plus a portable filter
Vaatwasser	Electrolux
Centraal stofzuig systeem	Bosch Chargeable (not central)
Extra info	Matresses: BESPOKE New

## MOTOR(EN)

Aantal motoren	2
Merk	FORD LEHMAN
Pk	120
kW	88.32
Brandstof	diesel
Gereviseerd in jaar	Starboard & Portside engines overhauled
Kruissnelheid (kn)	7,8



# GRAND BANKS 42 CLASSIC

<b>Aandrijving</b>	schroefas
<b>Elektrische installatie</b>	New, cables ,outlets, a new 220V circuit with SIEMENS fusebox.
<b>Generator</b>	Dolphin -8 Kva
<b>Accu's</b>	ja
<b>Startaccu</b>	ja
<b>Lichtaccu</b>	BANK 600 amps MUTLU acid Batteries
<b>Generatoraccu</b>	ja
<b>Accu monitor</b>	Cerbo GX Comm. centre, internet bluetooth. User follows remotely
<b>Omvormer</b>	VICTRON MULTIPLUS 12/3000 Inverter/charger
<b>Acculader/omvormer</b>	VICTRON MULTIPLUS 12/3000 Inverter/charger
<b>Extra info</b>	Engine room was refurbished & painted.
<b>Extra info</b>	Two extra empty 316 SS fuel tanks available for fuel or grey wat

## NAVIGATIE

<b>Autopiloot</b>	Simrad NAC3
-------------------	-------------

## UITRUSTING

<b>Bimini</b>	ja
<b>Kuipkussens</b>	ja
<b>Kuiptafel</b>	ja
<b>Kuipstoelen</b>	ja
<b>Zwemplatform</b>	ja
<b>Zwemtrap</b>	ja
<b>Loopplank</b>	316 SS
<b>Anker</b>	Delta 20 Kg
<b>Ankerketting</b>	100 m, Galvanised
<b>Ankerlier</b>	Delta
<b>Bijboot</b>	RIB: SOLD SEPARATELY
<b>Buitenboordmotor</b>	JOHNSON 9,9, 2 stroke (with the RIB)
<b>Zwemvesten</b>	ja



# GRAND BANKS 42 CLASSIC

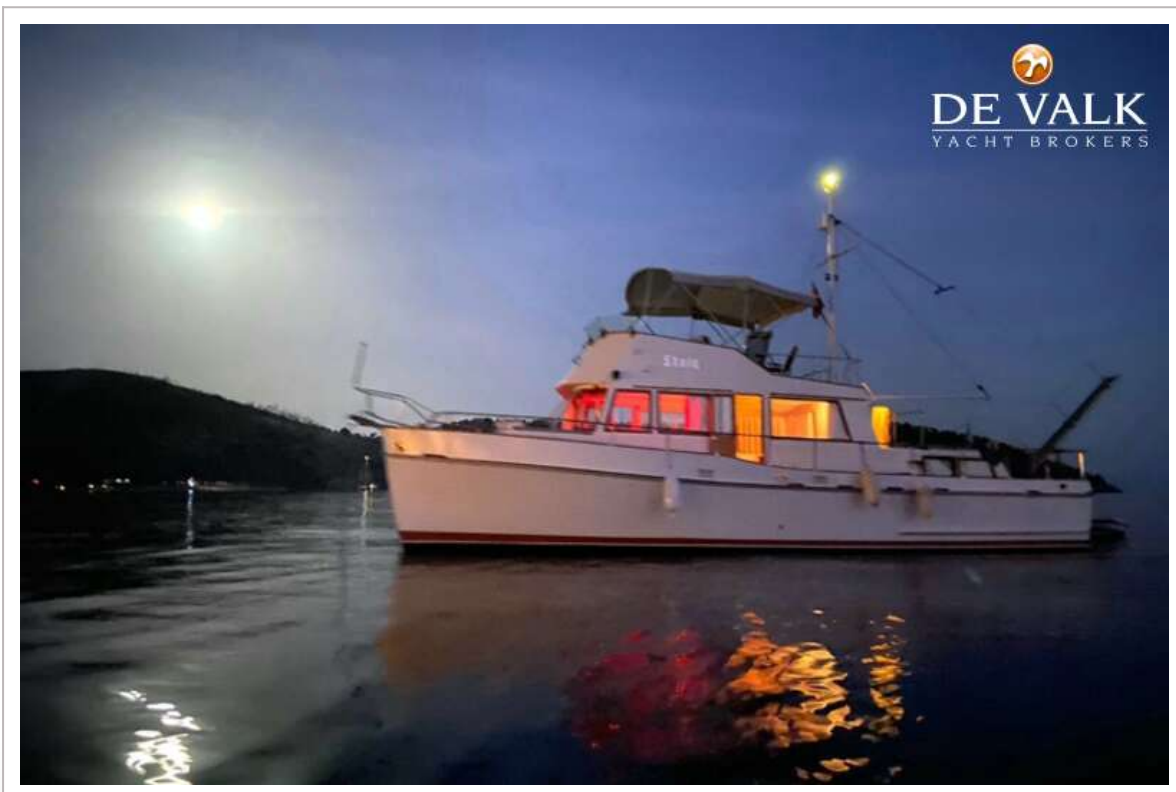
<b>Reddingsboei</b>	ja
<b>Stootkussens</b>	ja
<b>Landvasten</b>	ja
<b>Brandblusser</b>	ja
<b>Extra info</b>	Additional 90 Lt drinking water tank installed/pump: NUOVA RADE
<b>Extra info</b>	All steel on board is 316 quality: no rust under any circumstanc
<b>Extra info</b>	All material used is CE or Turkish TSE standart of quality



# GRAND BANKS 42 CLASSIC



# GRAND BANKS 42 CLASSIC



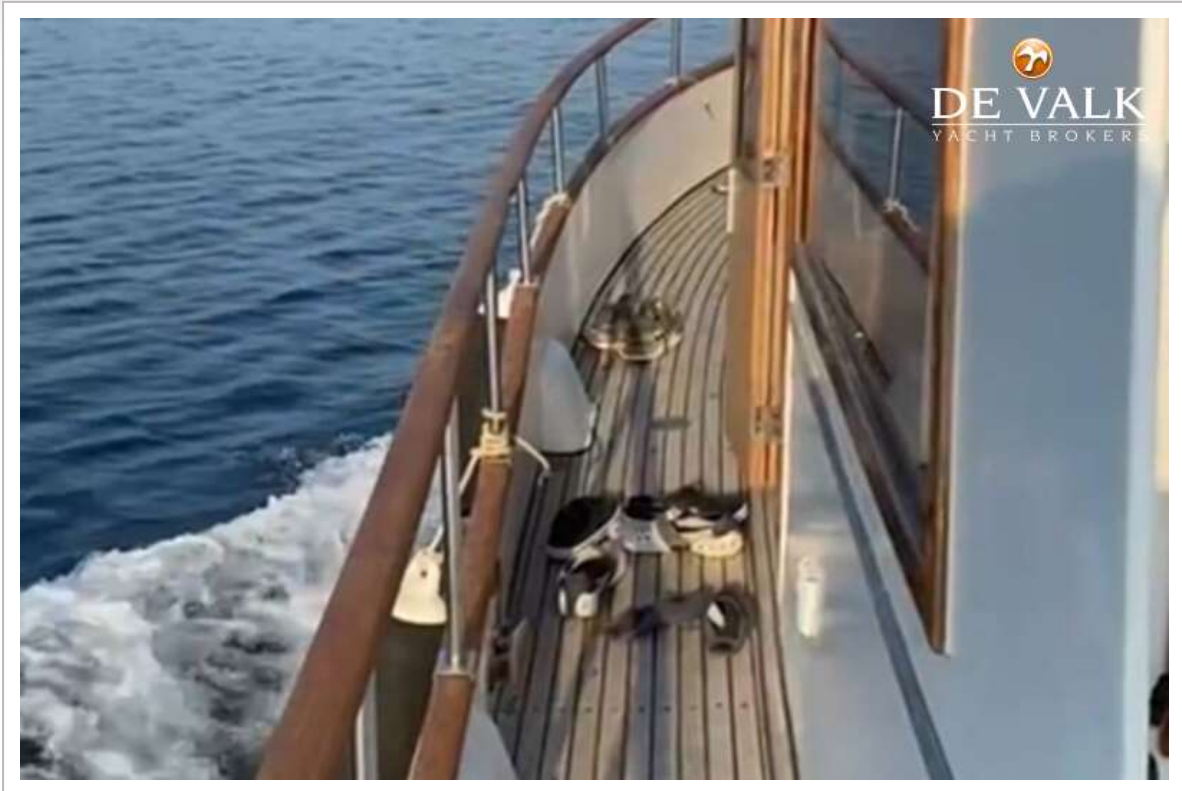
# GRAND BANKS 42 CLASSIC



# GRAND BANKS 42 CLASSIC



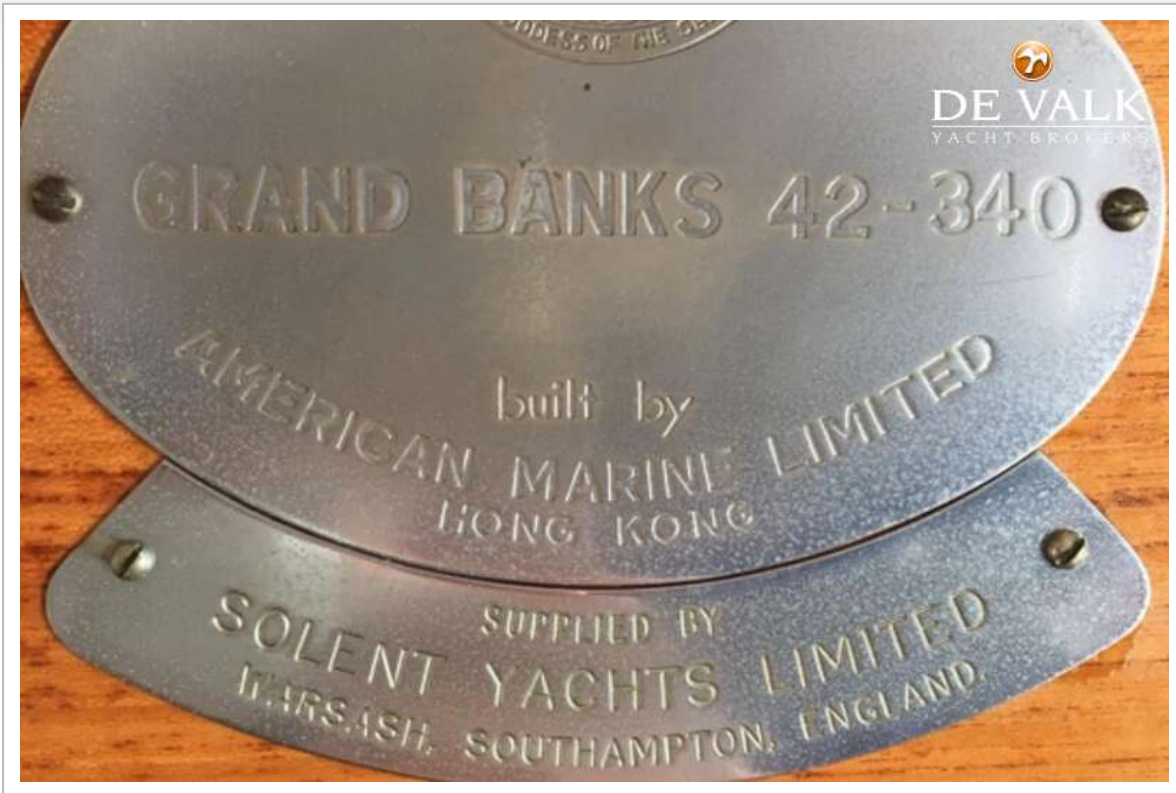
# GRAND BANKS 42 CLASSIC



# GRAND BANKS 42 CLASSIC



# GRAND BANKS 42 CLASSIC



# GRAND BANKS 42 CLASSIC



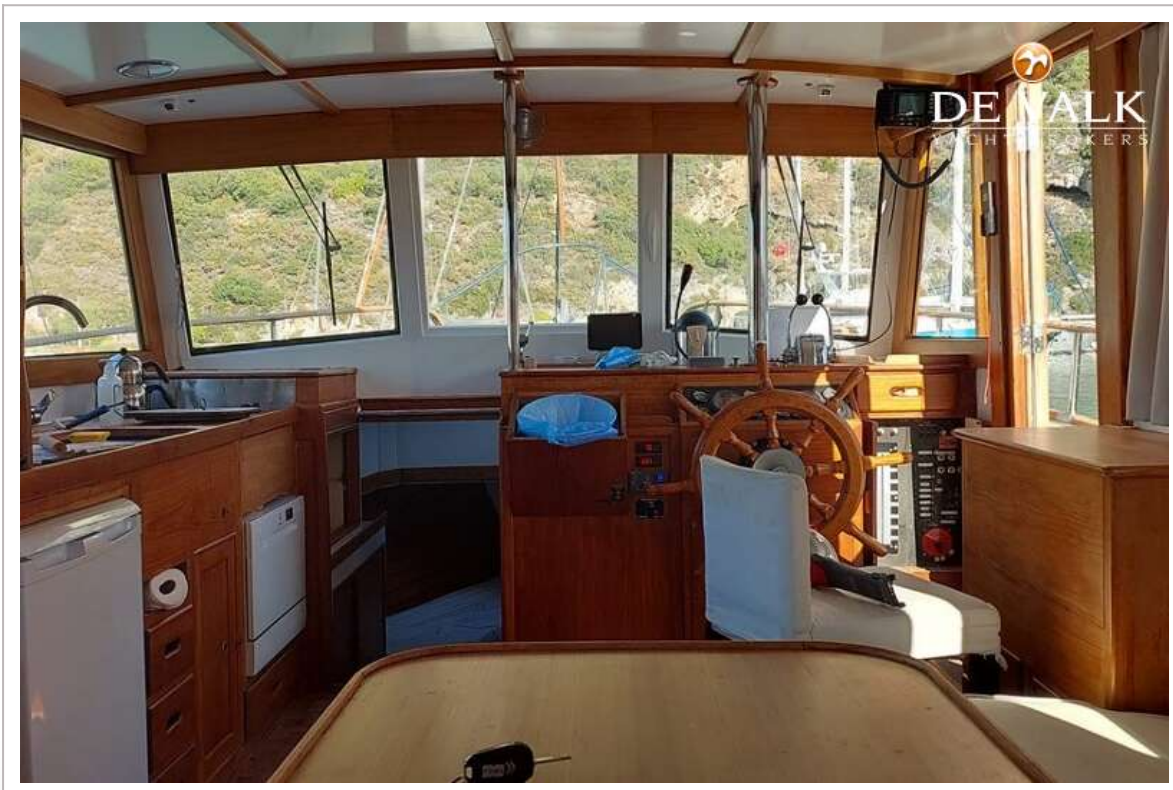
# GRAND BANKS 42 CLASSIC



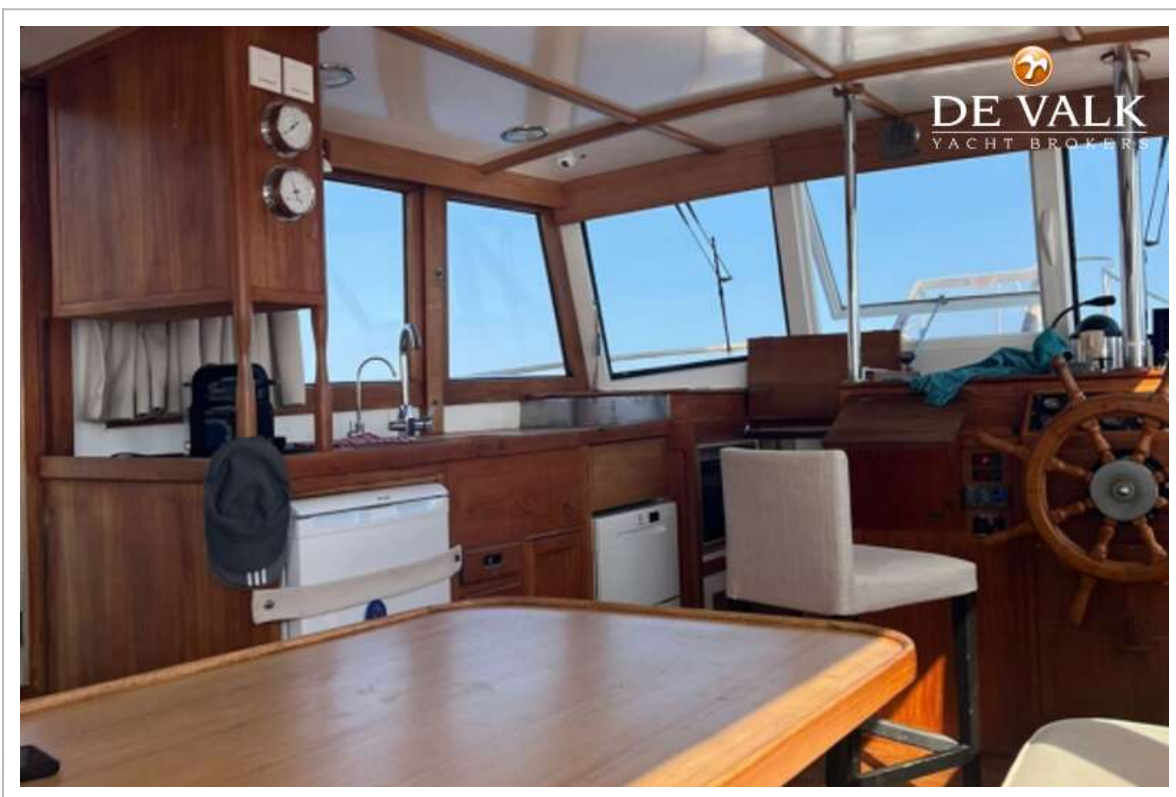
# GRAND BANKS 42 CLASSIC



# GRAND BANKS 42 CLASSIC



# GRAND BANKS 42 CLASSIC



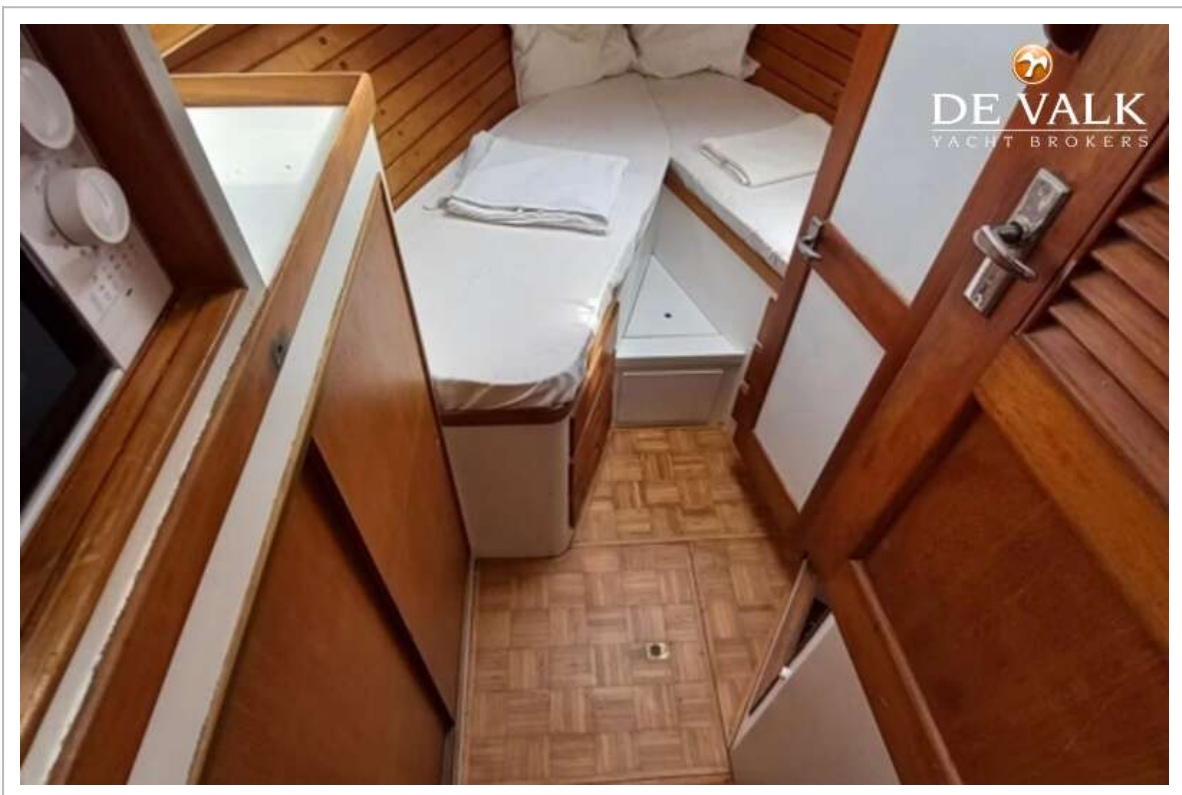
# GRAND BANKS 42 CLASSIC



# GRAND BANKS 42 CLASSIC



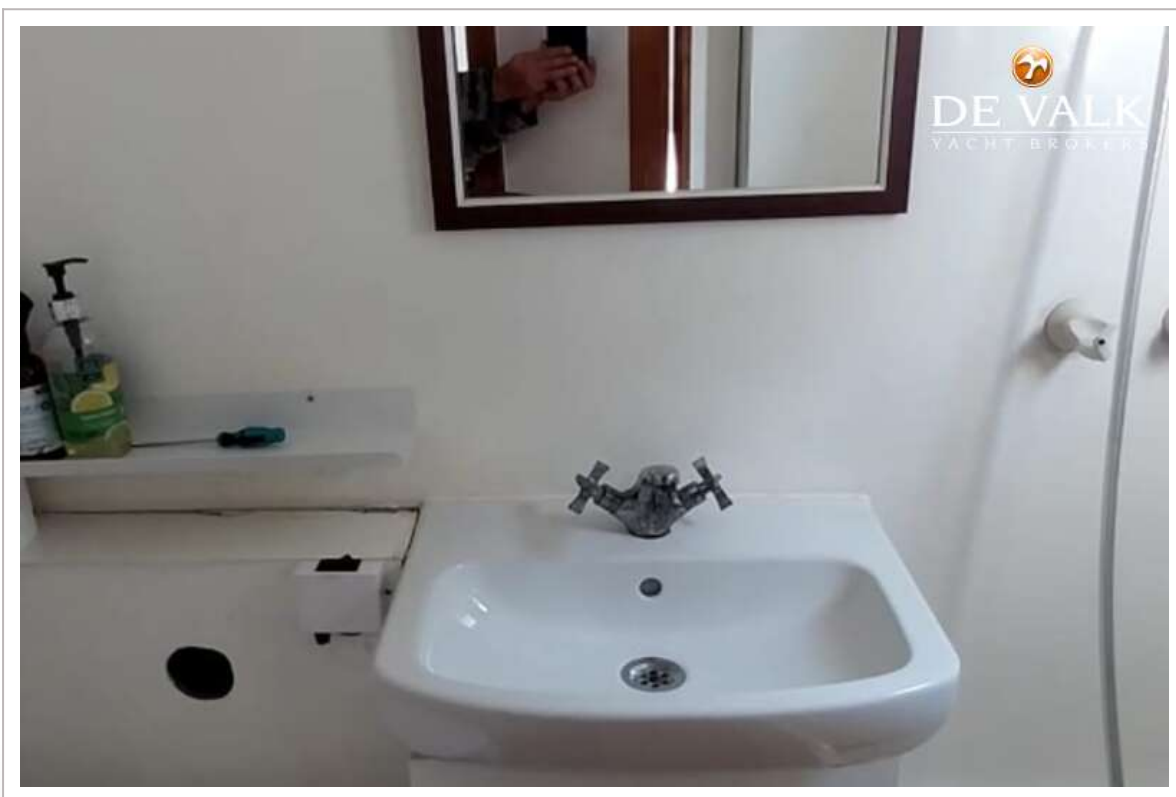
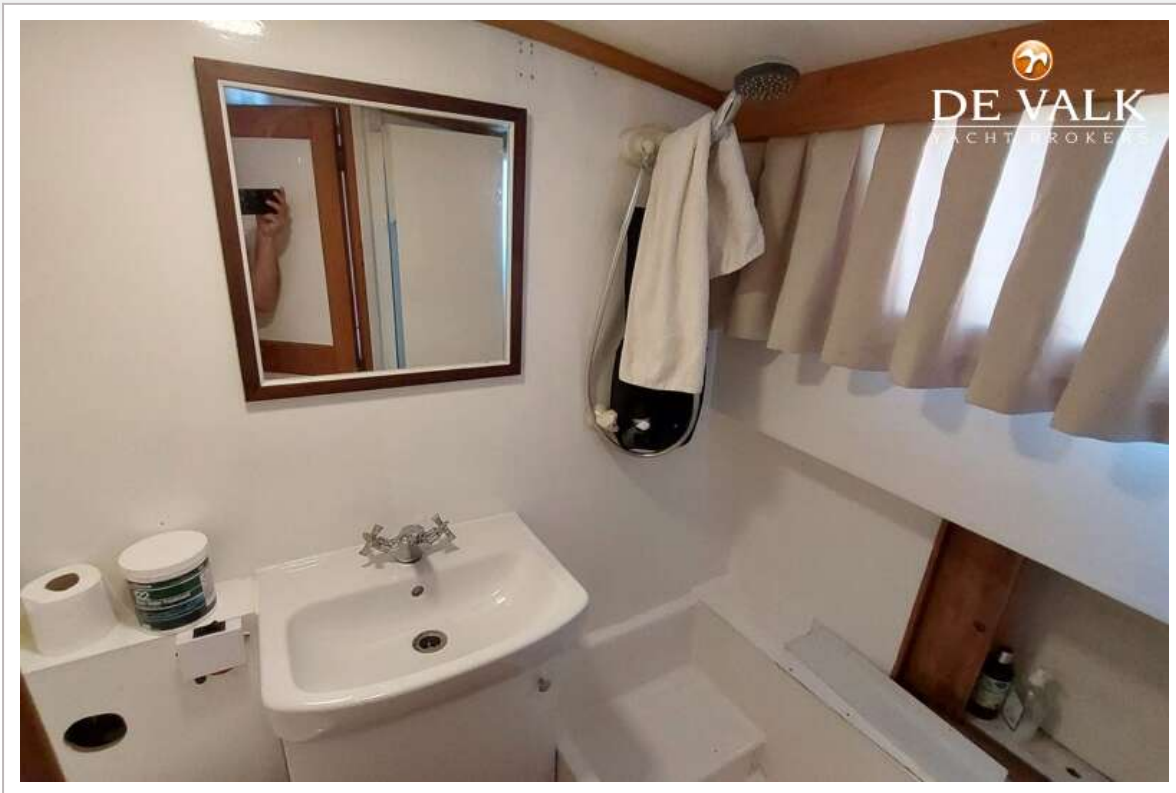
# GRAND BANKS 42 CLASSIC



# GRAND BANKS 42 CLASSIC



# GRAND BANKS 42 CLASSIC



# GRAND BANKS 42 CLASSIC



# GRAND BANKS 42 CLASSIC

