



DE VALK
YACHT BROKERS



RO/PAX DOUBLE ENDED FERRY 107 M



DE VALK
YACHT BROKERS

RO/PAX DOUBLE ENDED FERRY 107 M

VAN DE MAKELAAR

Double ended RO-PAX open type Ferry Built 2017 under INSB. Powered by 4 x Caterpillar main engines with total 4000hp. 4 x auxiliary gensets. Four rudder propeller VETH system. Oil-water separator. 13.5 knots service speed. 140 European type cars on main deck OR 24 trucks of 12m - and 44 cars on lower deck. Height of main garage is 4.95m. Total cars capacity 182 and passengers 800. Passengers elevator from garage to saloon. Air-conditioned throughout.

Sofia Iliia-Salvanou

SPECIFICATIES

Afmetingen	107.00 x 18.08 x 2.65 (m)	Bouwer	BEKRIS SHIPYARD, PERAMA,
Bouwjaar	2017	Hutten	
Materiaal	Staal	Slaapplaatsen	
Motor(en)	4 x CATERPILLAR C32 ACER MARINE diesel	Pk/Kw	4 x 4,000.00 (pk), 2,944.00 (kw)
Vraagprijs	€ 8.816.000 (BTW Niet betaald)	Ligplaats	

CONTACT

Kantoor	De Valk Corfu	Telefoon	(+30) 6948681503
Adres	New Port of Corfu, near Gouvia Marina 490 83 Corfu GR	E-mail	corfu@devalk.nl

DISCLAIMER

Hoewel er uiterste zorg besteed is aan de correctheid, volledigheid en actualiteit van onze informatie kunnen hieraan geen rechten worden ontleend.



RO/PAX DOUBLE ENDED FERRY 107 M

ALGEMEEN

Model	RO/PAX DOUBLE ENDED FERRY 107 M
Type	motorjacht
Lengte (m)	107,00
Breedte (m)	18,08
Diepgang (m)	2,65
Bouwjaar	2017
Gebouwd door	BEKRIS SHIPYARD, PERAMA,
Land	Griekenland
Ontwerper	PETYCHAKI
Romp materiaal	staal

MOTOR(EN)

Aantal motoren	4
Merk	CATERPILLAR
Type	C32 ACER MARINE
Pk	4000
kW	2944
Brandstof	diesel
Geïnstalleerd in jaar	2016
Maximale snelheid (kn)	15,2
Kruissnelheid (kn)	13,5



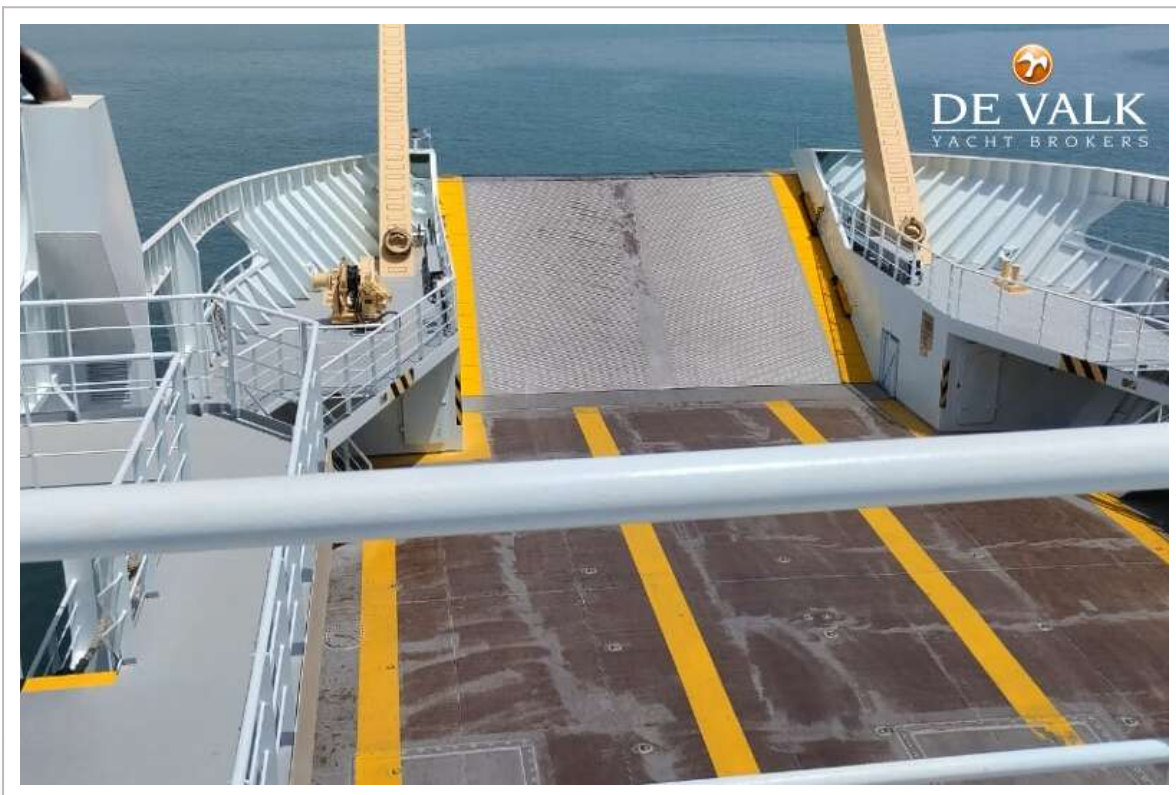
RO/PAX DOUBLE ENDED FERRY 107 M



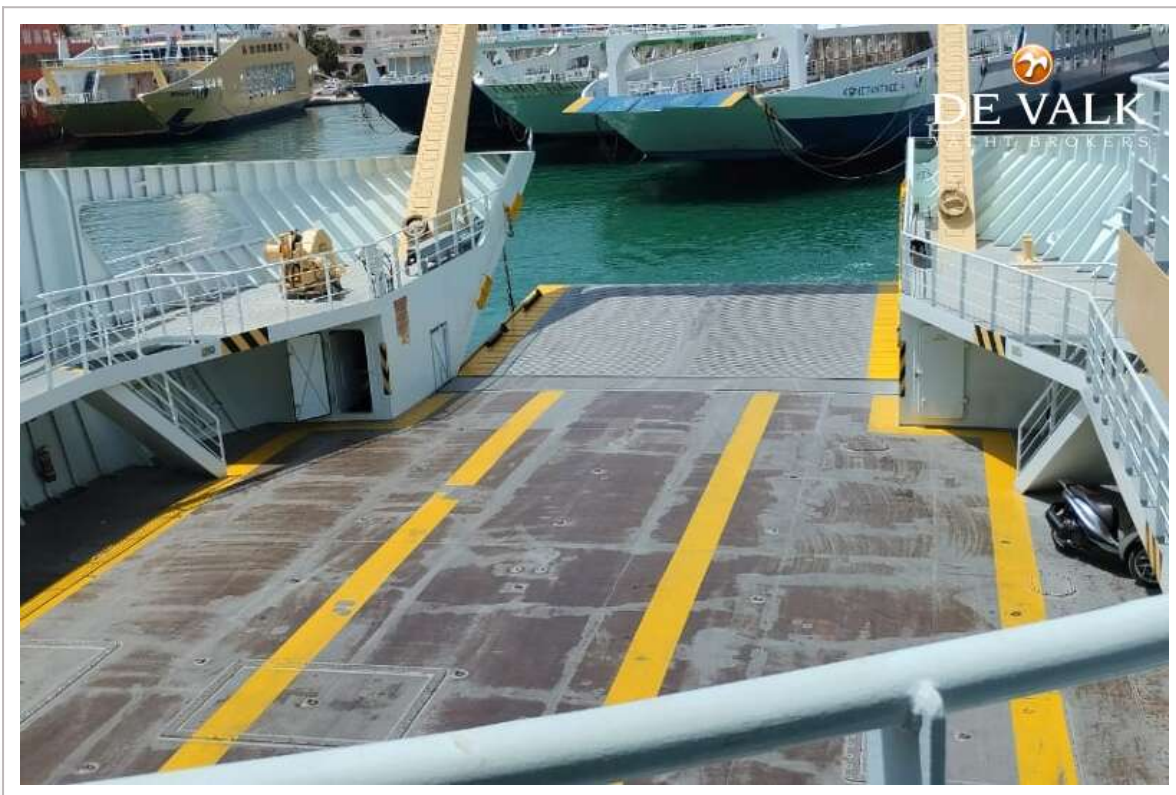
RO/PAX DOUBLE ENDED FERRY 107 M



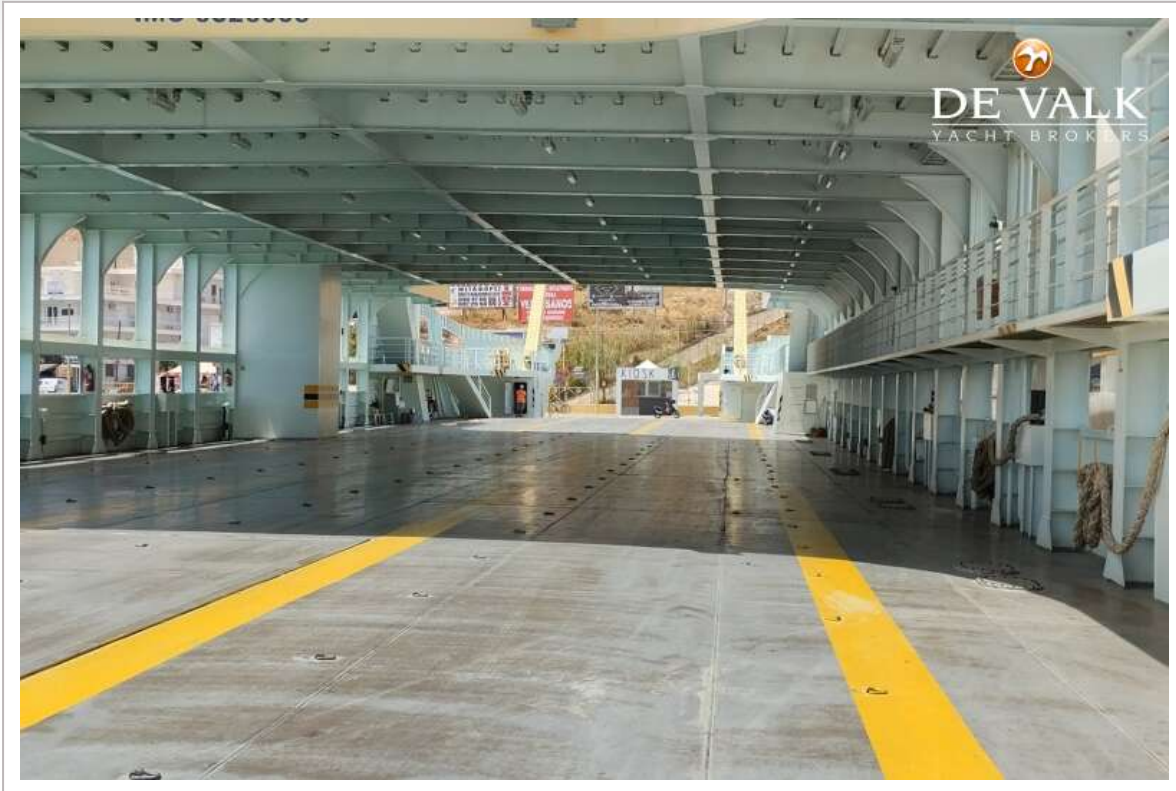
RO/PAX DOUBLE ENDED FERRY 107 M



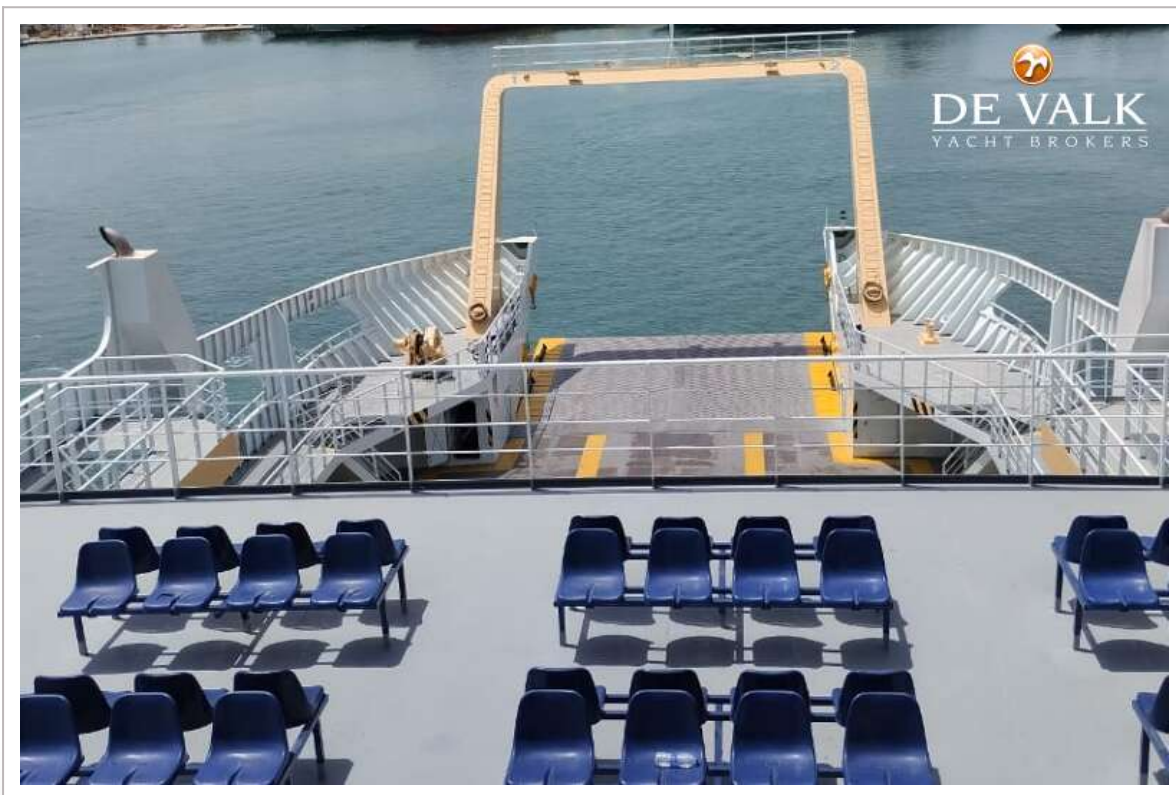
RO/PAX DOUBLE ENDED FERRY 107 M



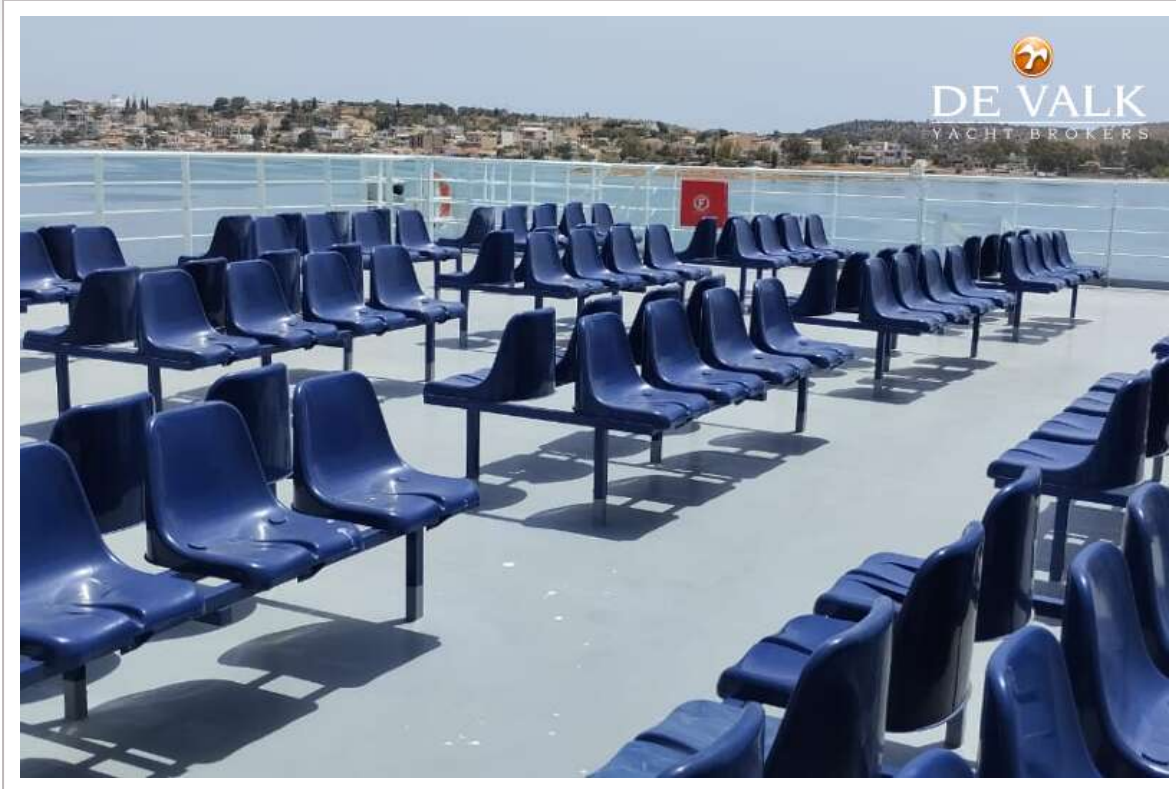
RO/PAX DOUBLE ENDED FERRY 107 M



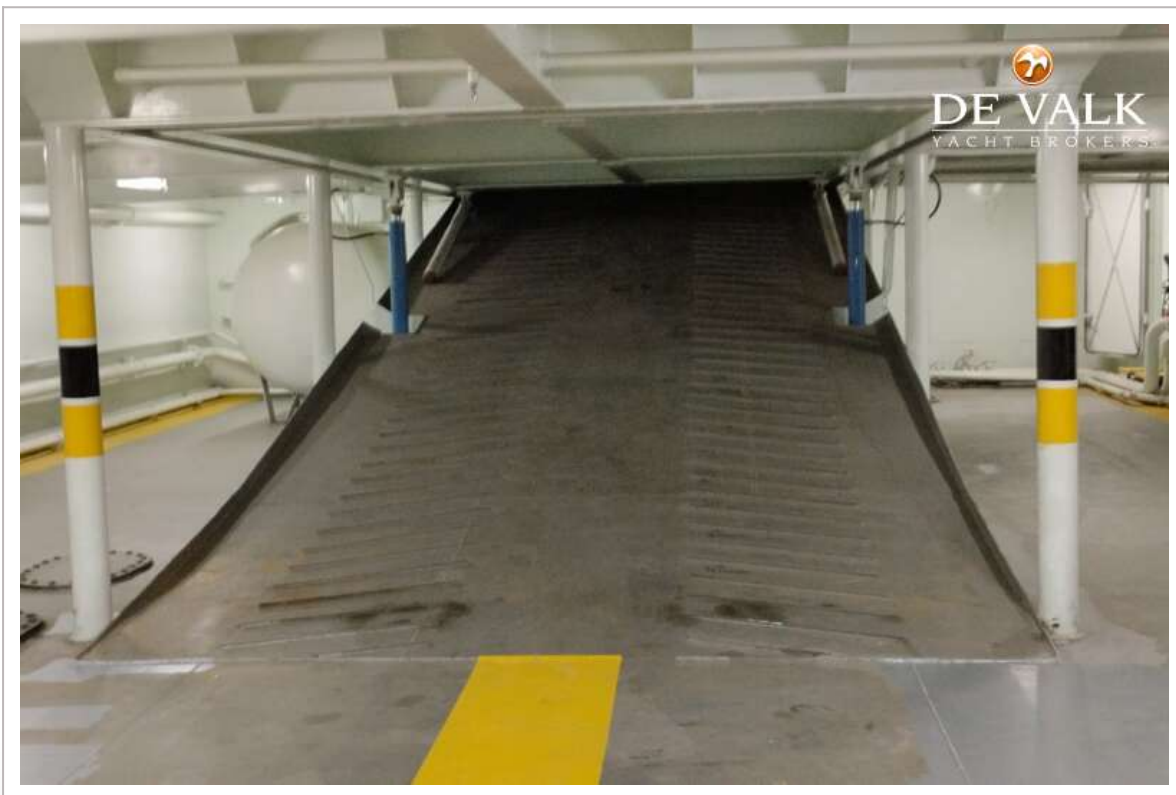
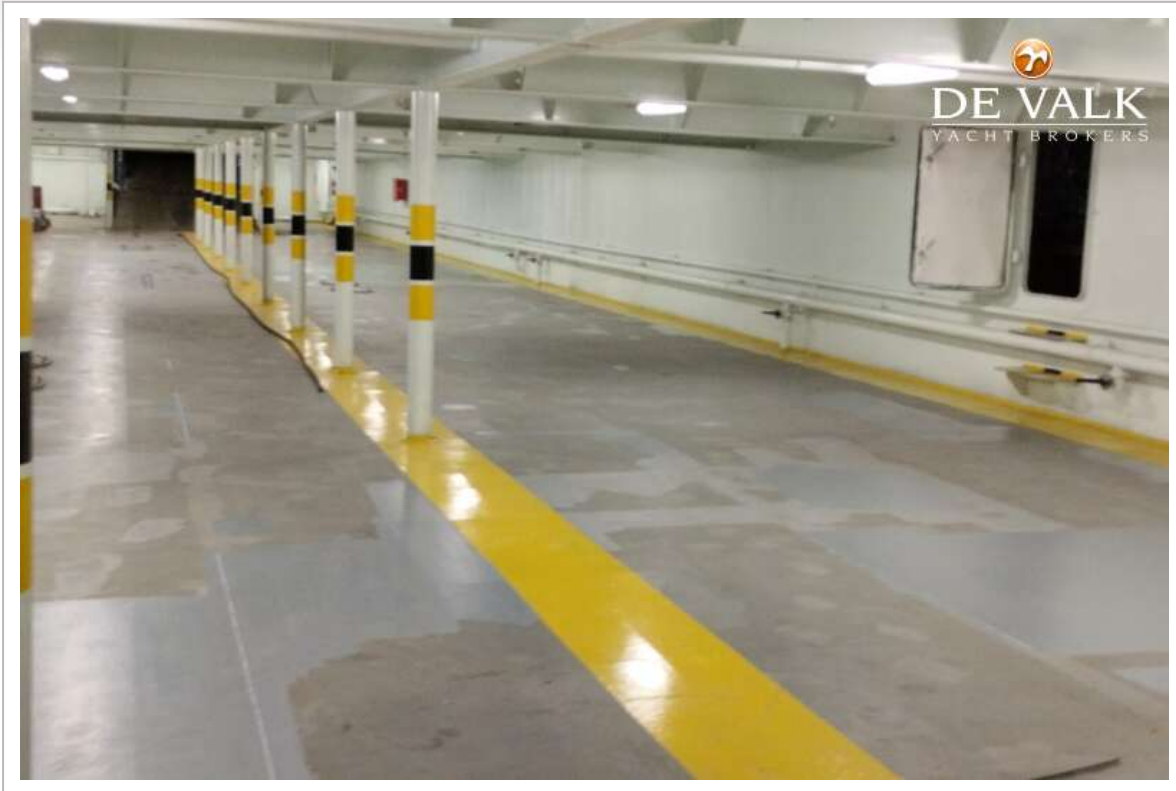
RO/PAX DOUBLE ENDED FERRY 107 M



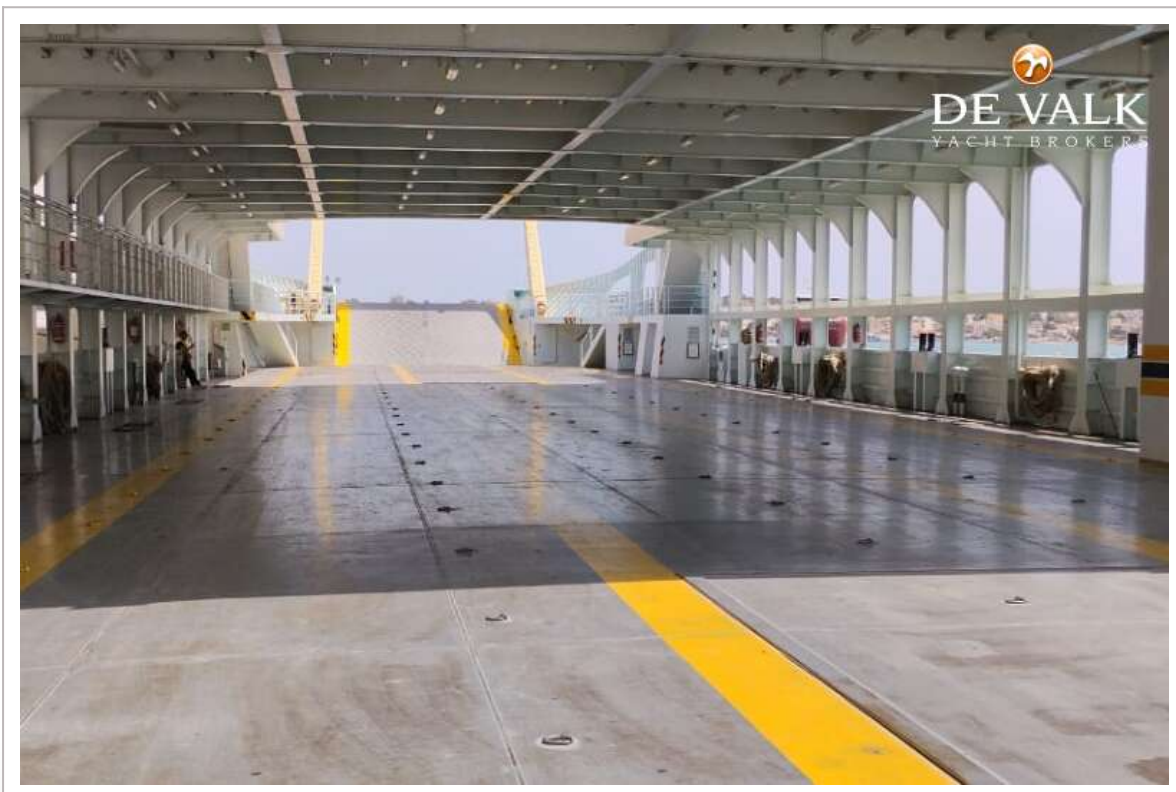
RO/PAX DOUBLE ENDED FERRY 107 M



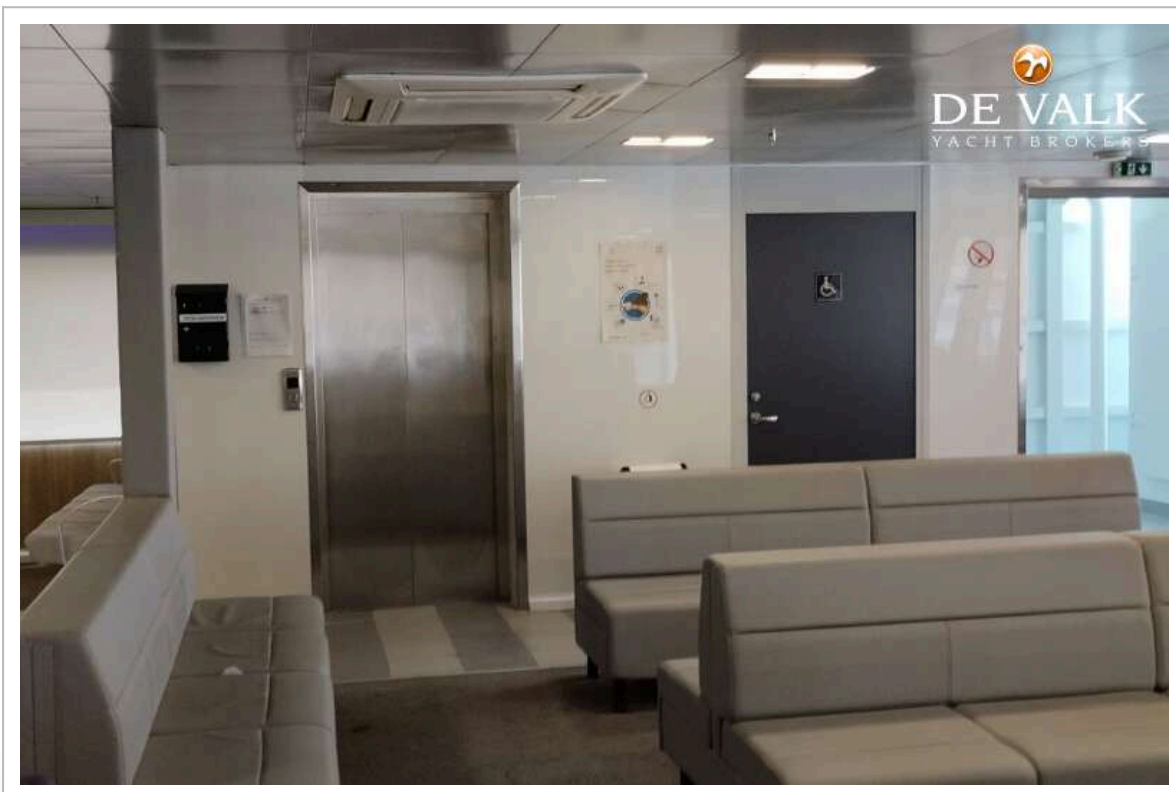
RO/PAX DOUBLE ENDED FERRY 107 M



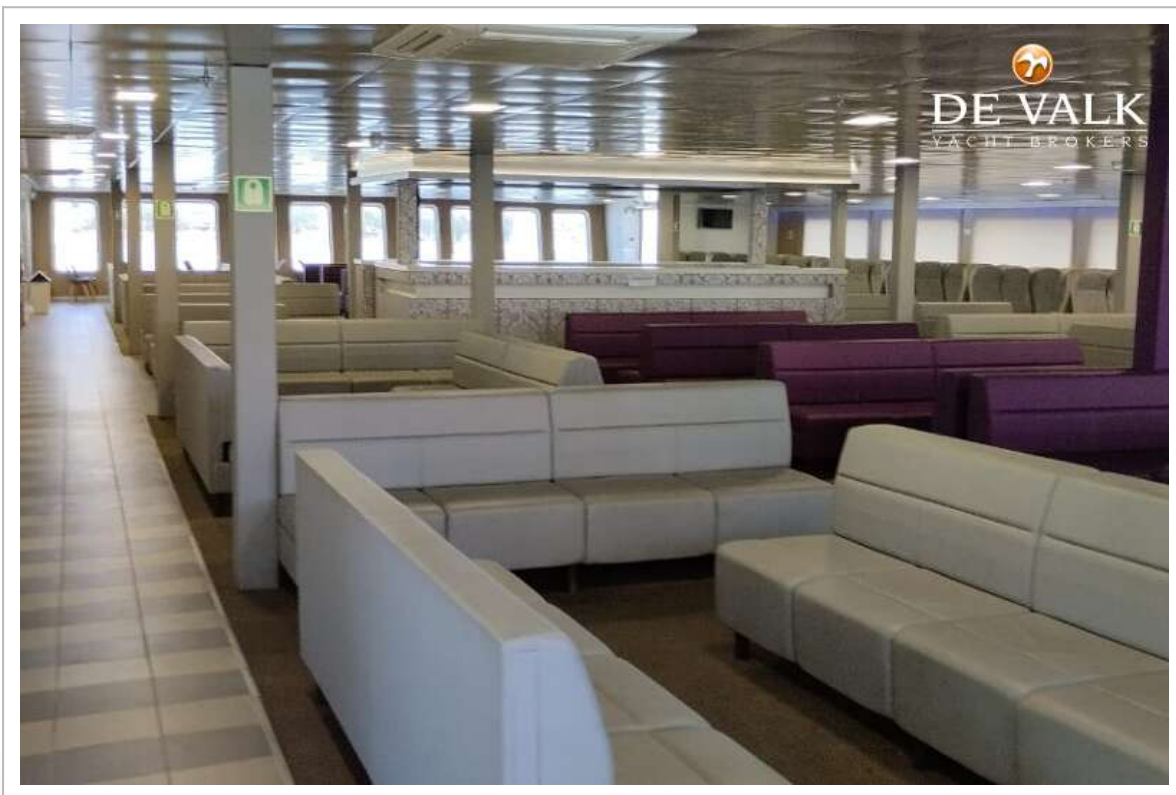
RO/PAX DOUBLE ENDED FERRY 107 M



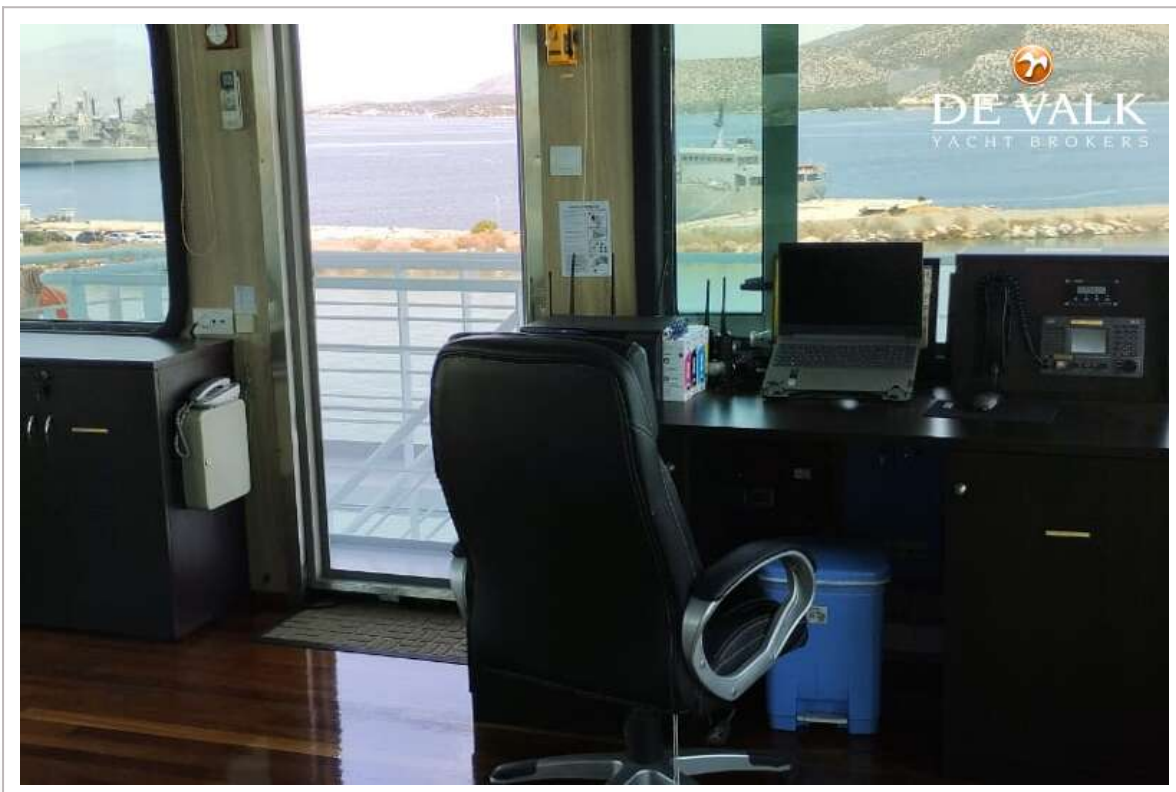
RO/PAX DOUBLE ENDED FERRY 107 M



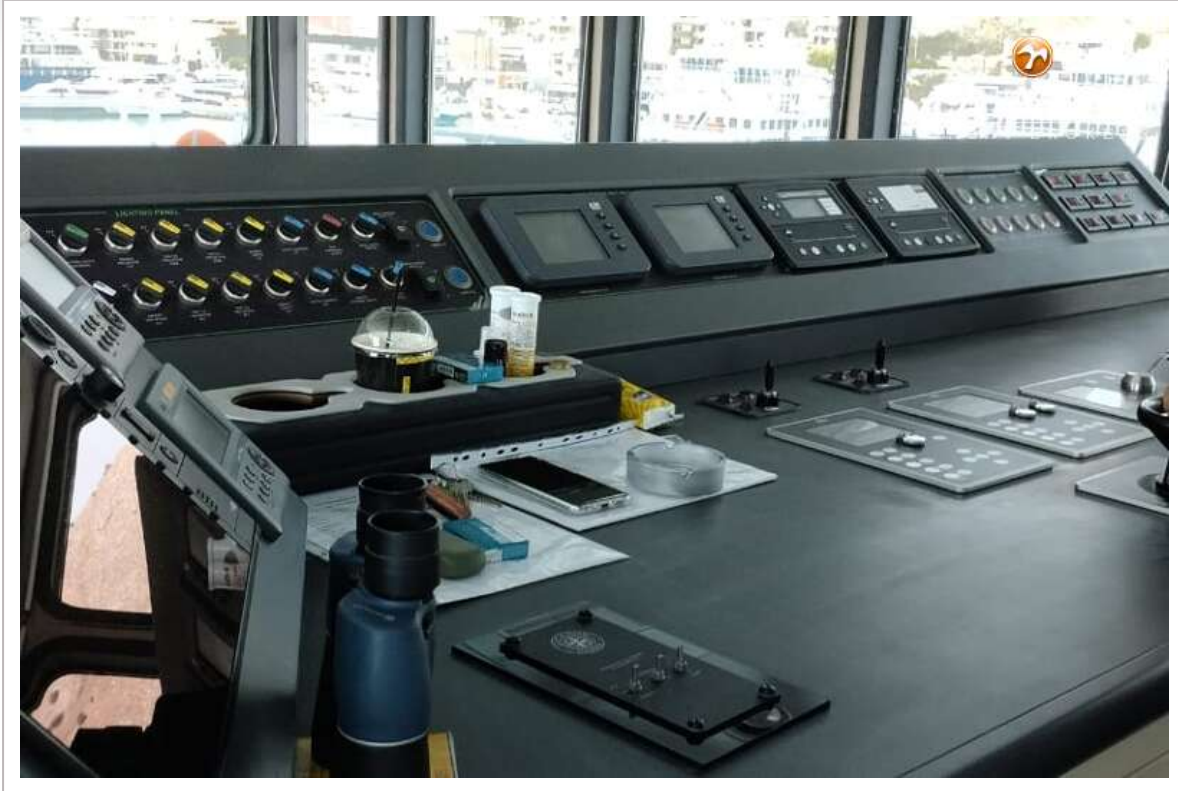
RO/PAX DOUBLE ENDED FERRY 107 M



RO/PAX DOUBLE ENDED FERRY 107 M



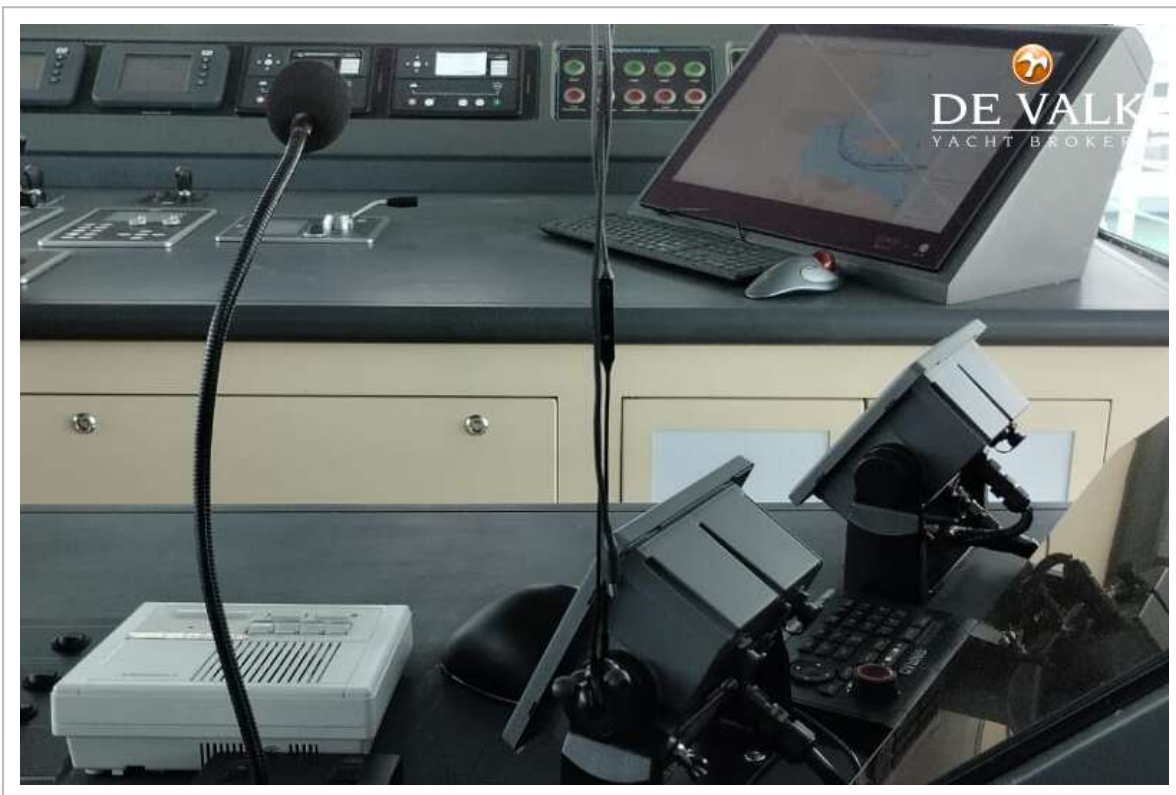
RO/PAX DOUBLE ENDED FERRY 107 M



RO/PAX DOUBLE ENDED FERRY 107 M



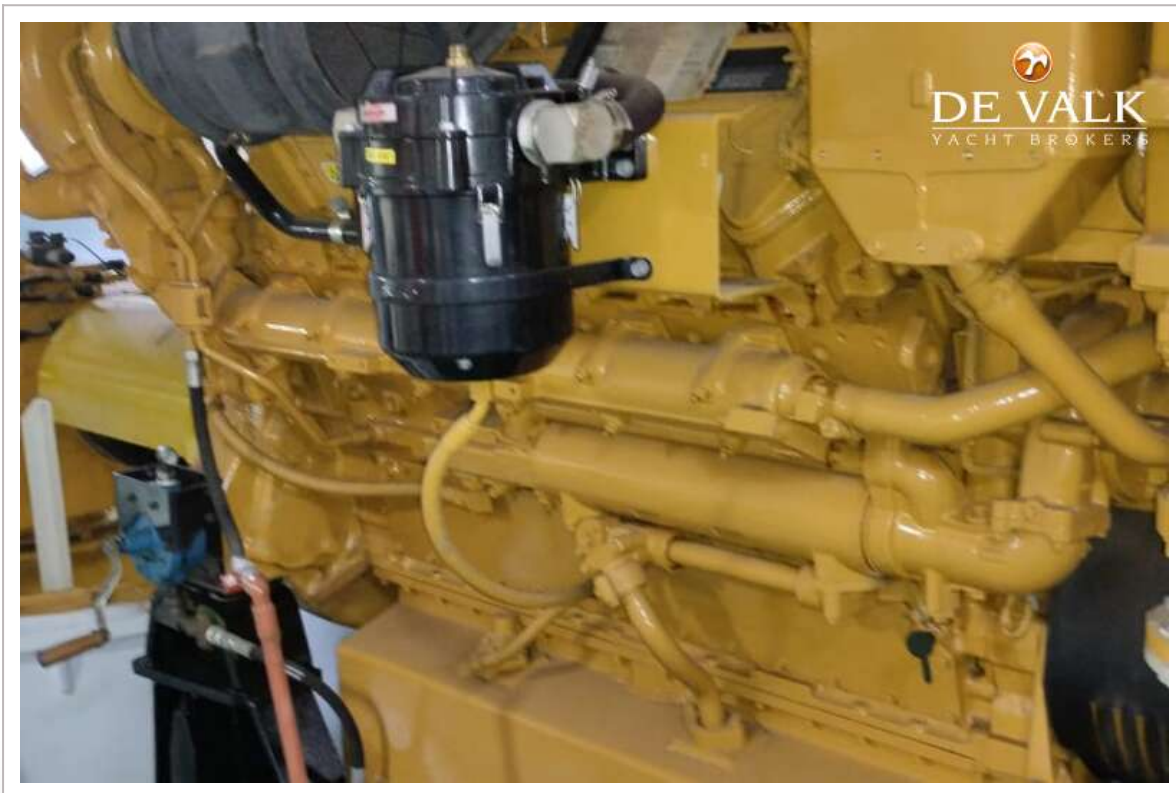
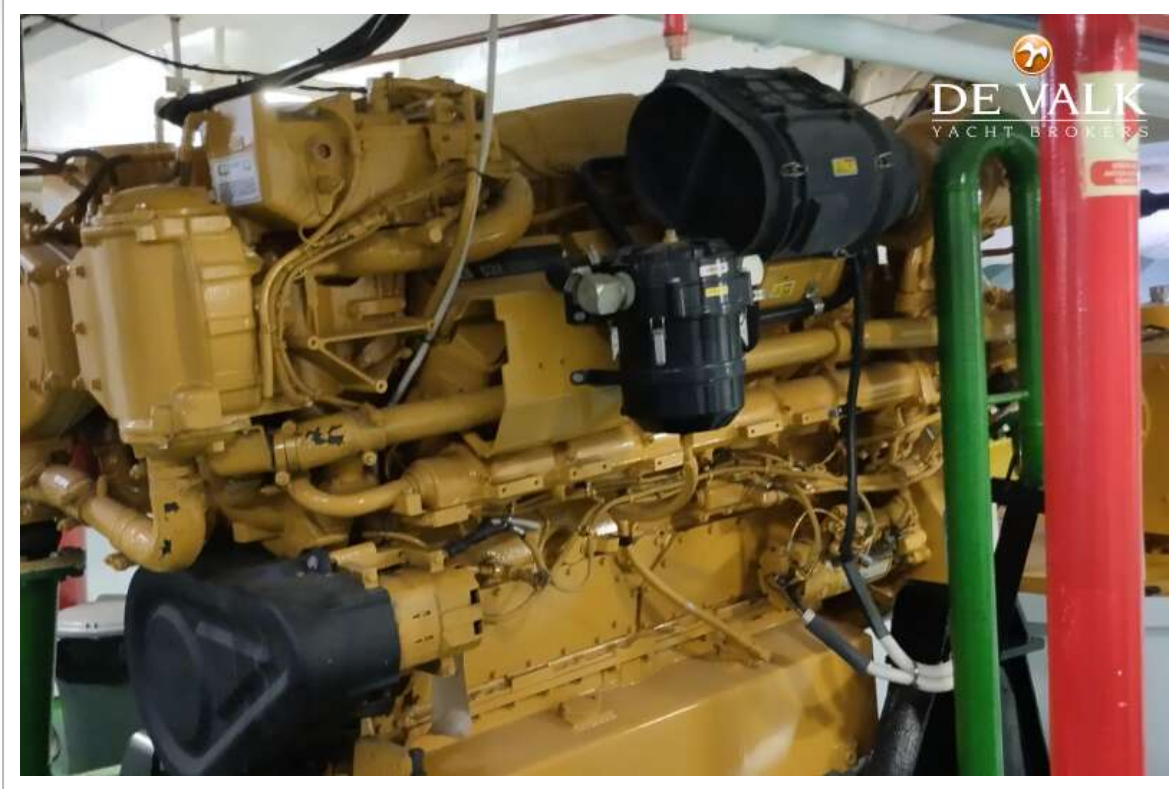
RO/PAX DOUBLE ENDED FERRY 107 M



RO/PAX DOUBLE ENDED FERRY 107 M



RO/PAX DOUBLE ENDED FERRY 107 M





RO/PAX DOUBLE ENDED FERRY 107 M

