



DE VALK  
YACHT BROKERS



HALLBERG RASSY 43 MK I



DE VALK  
YACHT BROKERS

# HALLBERG RASSY 43 MK I

## VAN DE MAKELAAR

HR 43 MKI is one of the prettiest boats ever built by Hallberg-Rassy. This is a well-built blue water cruiser. The interior floor is all in one level, there is a seagoing galley, a windshield, a rubbing strake to the hull, big engine, generous tankage and timeless beautiful lines with a natural grace.

*Sofia Iliia-Salvanou*

## SPECIFICATIES

|                   |                              |                      |                                  |
|-------------------|------------------------------|----------------------|----------------------------------|
| <b>Afmetingen</b> | 13.57 x 4.08 x 2.00 (m)      | <b>Bouwer</b>        | HALLBERG RASSY VARVS AB          |
| <b>Bouwjaar</b>   | 2005                         | <b>Hutten</b>        |                                  |
| <b>Materiaal</b>  | Polyester                    | <b>Slaapplaatsen</b> |                                  |
| <b>Motor(en)</b>  | 1 x VOLVO PENTA D2-75 diesel | <b>Pk/Kw</b>         | 75.00 (pk), 55.20 (kw)           |
| <b>Vraagprijs</b> | Onder Bieding (BTW )         | <b>Ligplaats</b>     | elders / niet bij verkoopkantoor |

## CONTACT

|                |   |                 |                    |
|----------------|---|-----------------|--------------------|
| <b>Kantoor</b> | De Valk Corfu   | <b>Telefoon</b> | (+30) 266 111 8095 |
| <b>Adres</b>   | New Port of Corfu, near Gouvia Marina<br>490 83 Corfu<br>GR | <b>E-mail</b>   | corfu@devalk.nl    |

## DISCLAIMER

Hoewel er uiterste zorg besteed is aan de correctheid, volledigheid en actualiteit van onze informatie kunnen hieraan geen rechten worden ontleend.



# HALLBERG RASSY 43 MK I

## ALGEMEEN

|                        |                              |
|------------------------|------------------------------|
| Model                  | HALLBERG RASSY 43 MK I       |
| Type                   | zeiljacht                    |
| Lengte (m)             | 13,57                        |
| Lengte waterlijn (m)   | 11,75                        |
| Breedte (m)            | 4,08                         |
| Diepgang (m)           | 2,00                         |
| Bouwjaar               | 2005                         |
| Gebouwd door           | HALLBERG RASSY VARVS AB      |
| Land                   | Zweden                       |
| Ontwerper              | German Frers                 |
| Waterverplaatsing (t)  | 12,7                         |
| CE norm                | A                            |
| Romp materiaal         | polyester                    |
| Romp kleur             | wit                          |
| Kiel type              | vin kiel                     |
| Materiaal opbouw       | polyester                    |
| Dek materiaal          | polyester                    |
| Afwerking dek          | teak                         |
| Afwerking kuip         | teak                         |
| Antifouling (jaar)     | 2024                         |
| Raammateriaal          | normaal glas                 |
| Dekluik                | ja                           |
| Patrijspooten          | ja                           |
| Isolatie               | schuim                       |
| Brandstoftank (liter)  | roestvast staal 395 X 1 TANK |
| Drinkwatertank (liter) | 650 (420+230) Two tanks      |
| Vuilwatertank (liter)  | 25                           |
| Stuurwiel              | ja                           |

## ACCOMMODATIE



# HALLBERG RASSY 43 MK I

|                   |                 |
|-------------------|-----------------|
| Vloer             | teak            |
| Salon             | ja              |
| Verwarming        | ja              |
| Navigatie ruimte  | ja              |
| Kaartentafel      | ja              |
| Achterkajuit      | ja              |
| Dinette           | ja              |
| Keuken            | ja              |
| Aanrechtblad      | ja              |
| Spoelbak          | ja              |
| Kooktoestel       | gas             |
| Oven              | ja              |
| Gasdetector       | ja              |
| Koelkast          | ja              |
| Vriezer           | ja              |
| Warmwatersysteem  | ja              |
| Waterdruksysteem  | ja              |
| Koffiezetapparaat | ja              |
| Kommaliewan       | ja              |
| Eigenaarshut      | tweepersoonsbed |
| Badkamer          | ja              |
| Toilet            | en suite        |
| Wasbak            | in de badkamer  |
| Douche            | en suite        |
| Gastenhut 1       | tweepersoonsbed |
| Kledingkast       | ja              |
| Badkamer          | ja              |
| Toilet            | ja              |
| Wasbak            | in de badkamer  |
| Douche            | ja              |
| Gastenhut 2       | tweepersoonsbed |
| Kleerkast         | ja              |



# HALLBERG RASSY 43 MK I

|          |                |
|----------|----------------|
| Badkamer | ja             |
| Toilet   | ja             |
| Wasbak   | in de badkamer |
| Douche   | ja             |

## MOTOR(EN)

|                         |                          |
|-------------------------|--------------------------|
| Aantal motoren          | 1                        |
| Merk                    | VOLVO PENTA              |
| Type                    | D2-75                    |
| Pk                      | 75                       |
| kW                      | 55.20                    |
| Brandstof               | diesel                   |
| Kruissnelheid (kn)      | 7                        |
| Motoruren               | 2929                     |
| Keerkoppeling           | HURTH                    |
| Type schroef            | klap GORI                |
| Schroefbladen           | 3                        |
| Materiaal schroefas     | roestvast staal          |
| Handlenspomp            | Henderson                |
| Elektrische lenspomp    | 3500 Gph                 |
| Elektrische installatie | ja                       |
| Accu's                  | Heavy duty batteries x 6 |
| Startaccu               | 1 x 80 Ah                |
| Lichtaccu               | 5 x 80 Ah                |
| Acculader               | ja                       |
| Zonnecellen             | 2 x 1000 w               |
| Walstroom               | ja                       |

## NAVIGATIE

|             |                |
|-------------|----------------|
| Kompas      | ja             |
| Dieptemeter | RAYMARINE ST60 |



# HALLBERG RASSY 43 MK I

|                      |                              |
|----------------------|------------------------------|
| Log                  | ja                           |
| Marifoon             | RAYMARINE 240E               |
| Autopiloot           | RAYMARINE ST7001             |
| Radar                | RAYMARINE 2 Kw               |
| GPS                  | RAYMARINE E80 at Chart table |
| Navtex               | ja                           |
| AIS transceiver      | RAYMARINE 856                |
| Epirb                | Ocean signal                 |
| Navigatieverlichting | All LED                      |

## UITRUSTING

|                     |                |
|---------------------|----------------|
| Bimini              | ja             |
| Wintertent          | ja             |
| Kuipkussens         | ja             |
| Kuiptafel           | ja             |
| Zwemtrap            | ja             |
| Loopplank           | ja             |
| Anker               | Delta 24 Kg    |
| Ankerketting        | 60m galvanized |
| Ankerlier           | LEWMAR         |
| Bijboot             | ja             |
| Buitenboordmotor    | YAMAHA 2,5 Hp  |
| Zeereeling          | ja             |
| Reddingsvlot        | ja             |
| Reddingsvlot (pers) | For 6 persons  |
| Zwemvesten          | ja             |
| Reddingsboei        | ja             |
| Radar reflektor     | ja             |
| Stootkussens        | ja             |
| Landvasten          | ja             |
| Reserve onderdelen  | ja             |



**Brandblusser**

X 4 plus fire blanket

## TUIGAGE

**Tuigage**

ja

**Staad want**

ja

**Zalingen**

Triple by SELDEN

**Grootzeil**

Furling in mast. Elvstrom in good condition & a spare one older

**Genua**

Furling. In good condition

**Genua II**

In good order

**Genua rolreefsysteem**

ja

**Vallieren**

ja

**Multifunctionele lieren**

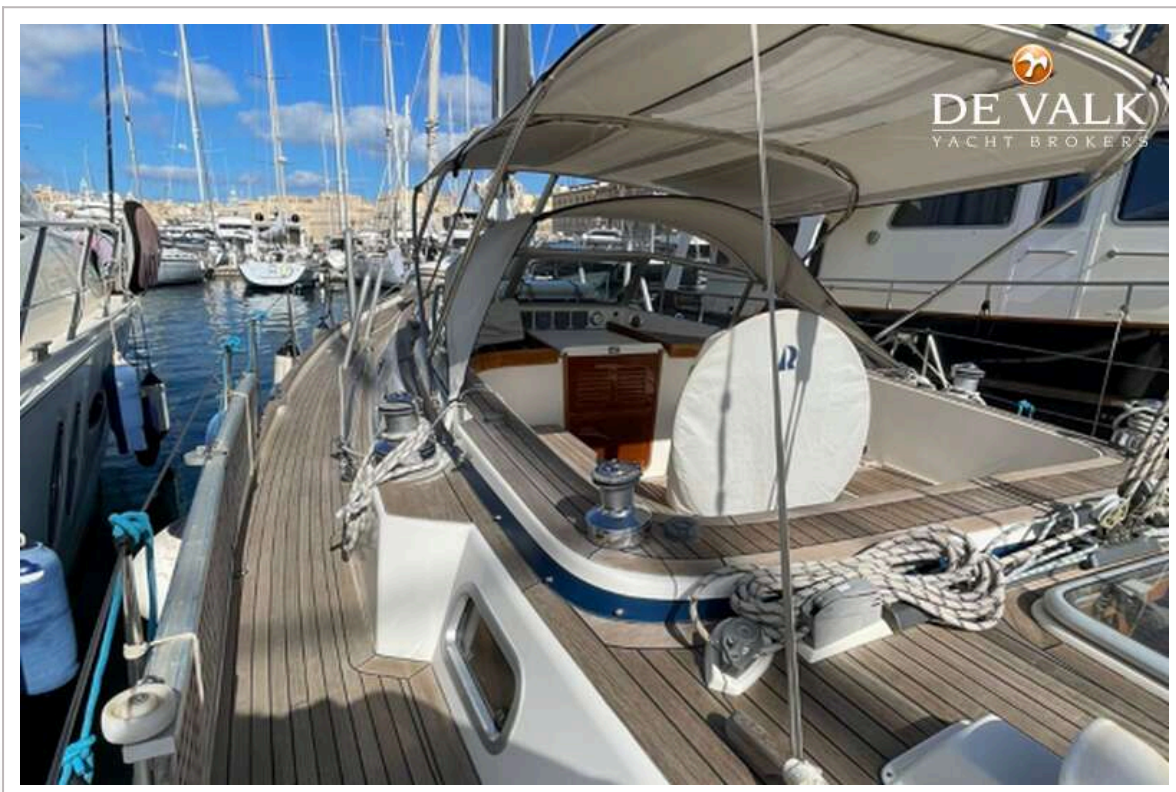
ja



# HALLBERG RASSY 43 MK I



# HALLBERG RASSY 43 MK I



# HALLBERG RASSY 43 MK I



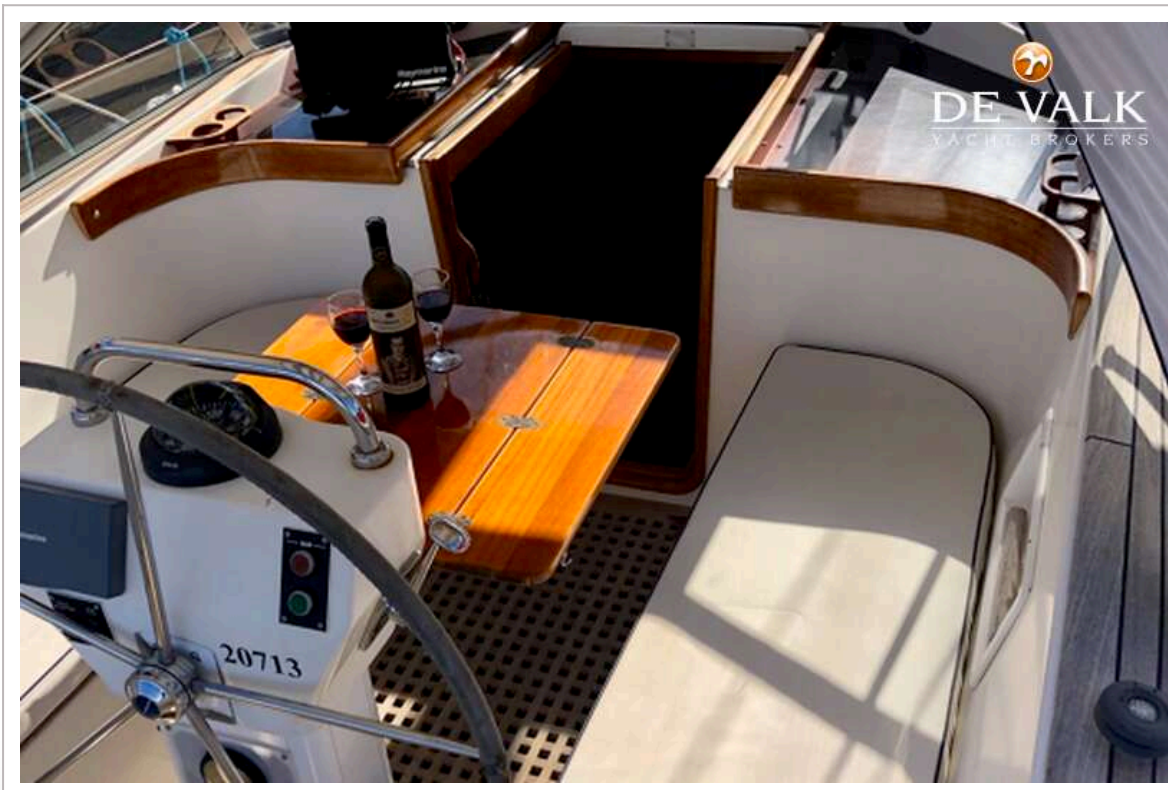
# HALLBERG RASSY 43 MK I



# HALLBERG RASSY 43 MK I



# HALLBERG RASSY 43 MK I



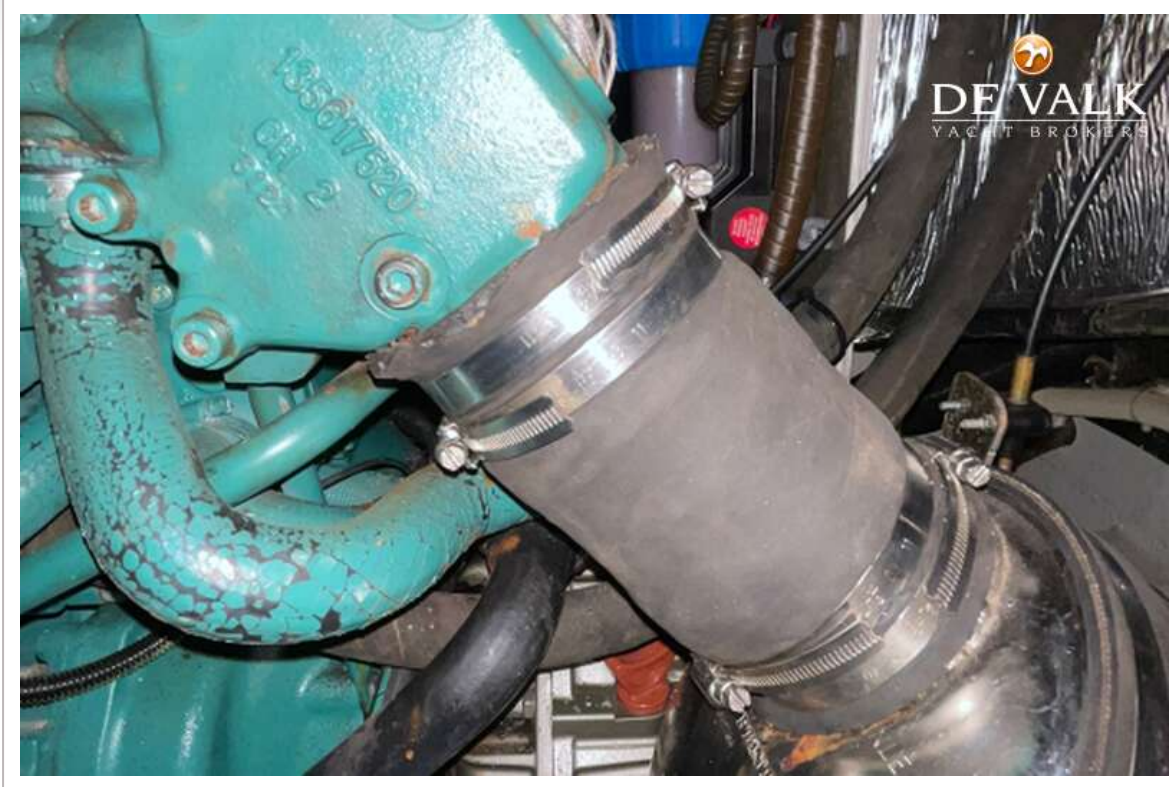
# HALLBERG RASSY 43 MK I



# HALLBERG RASSY 43 MK I



# HALLBERG RASSY 43 MK I



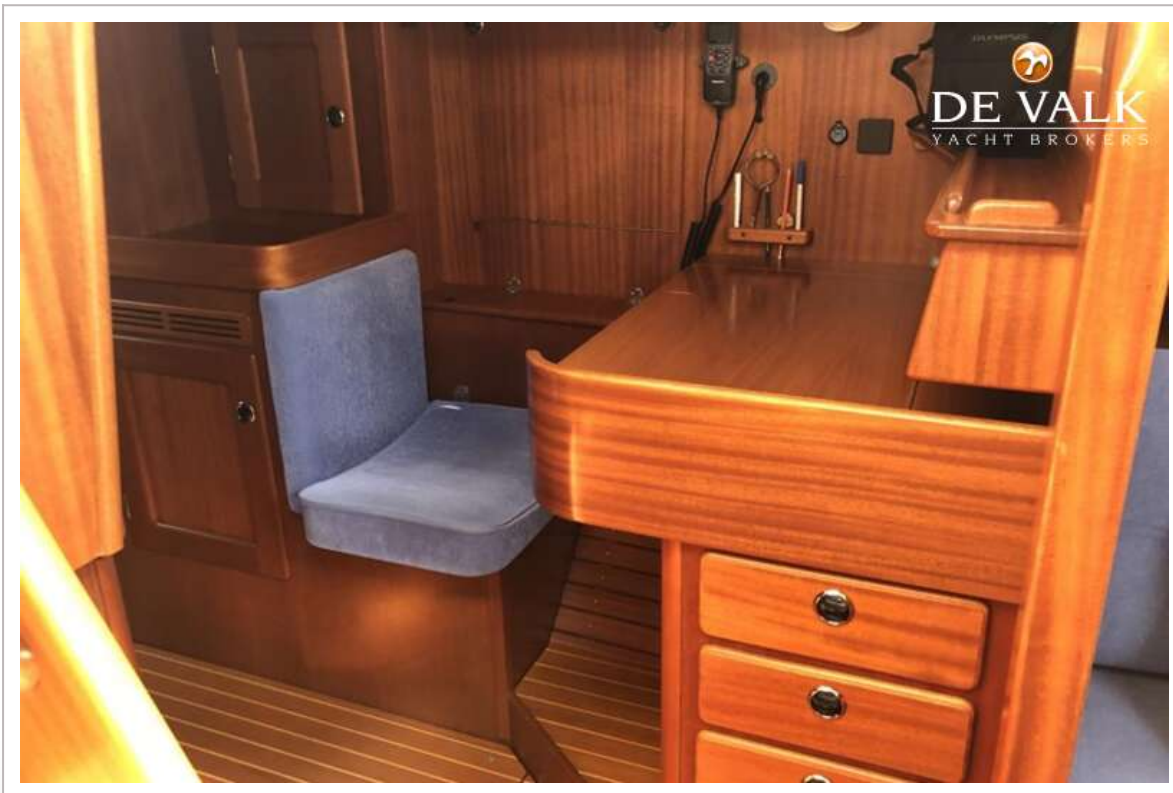
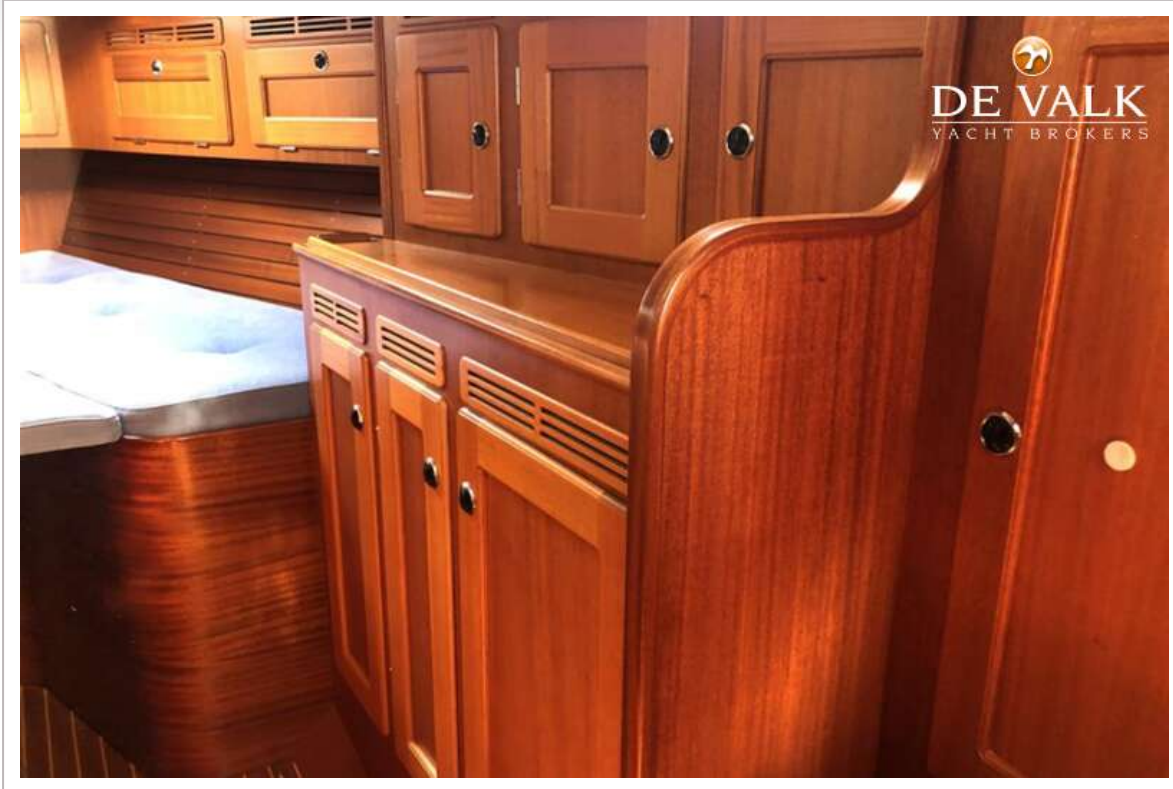
# HALLBERG RASSY 43 MK I



# HALLBERG RASSY 43 MK I



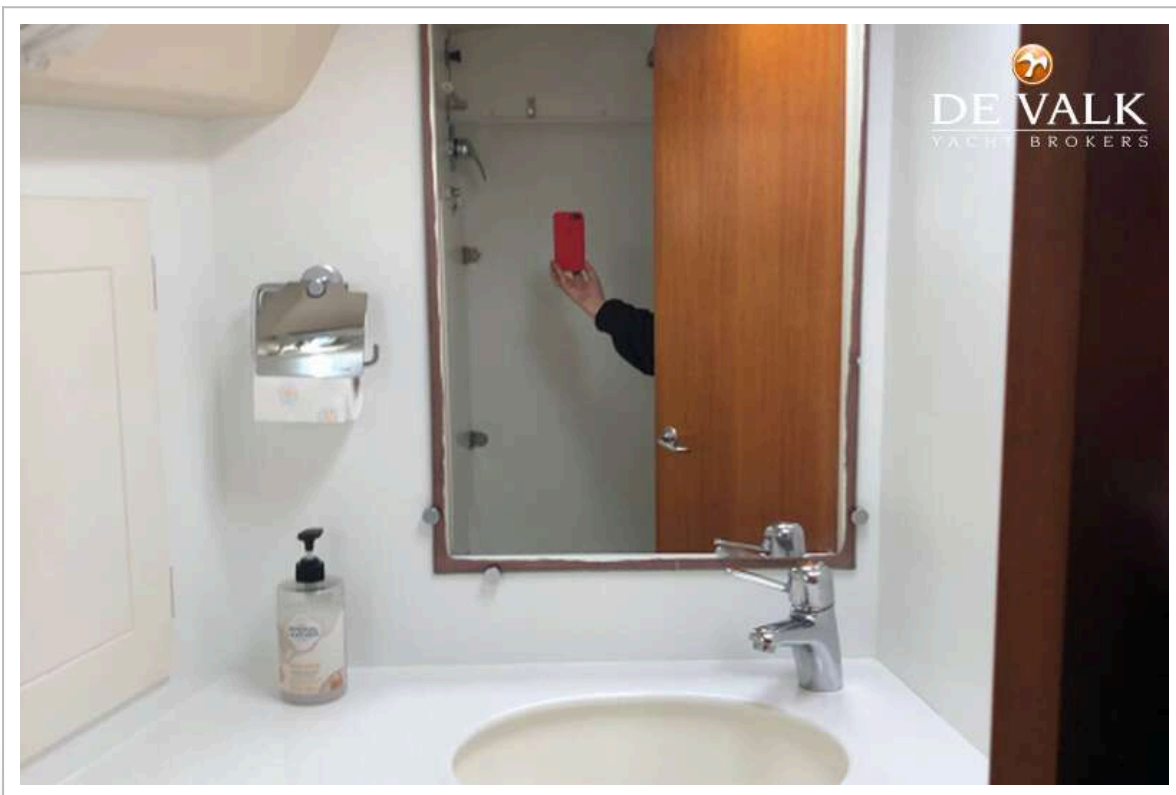
# HALLBERG RASSY 43 MK I



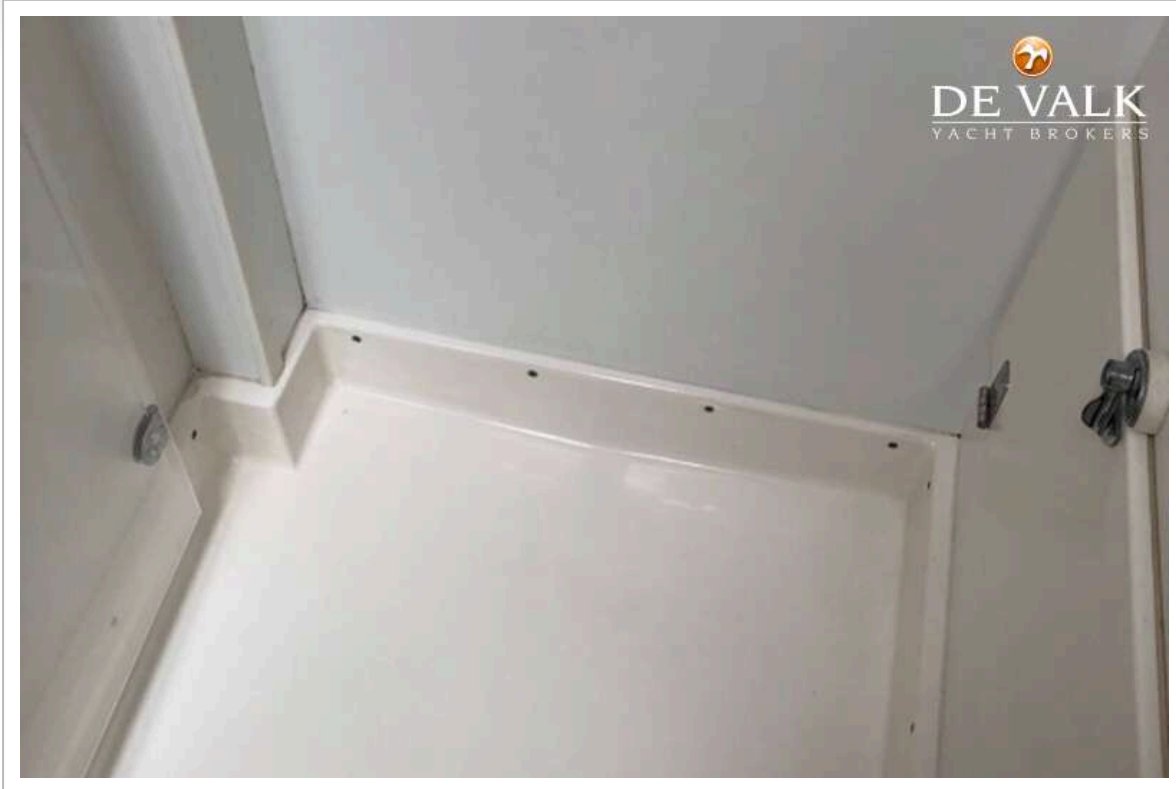
# HALLBERG RASSY 43 MK I



# HALLBERG RASSY 43 MK I



# HALLBERG RASSY 43 MK I



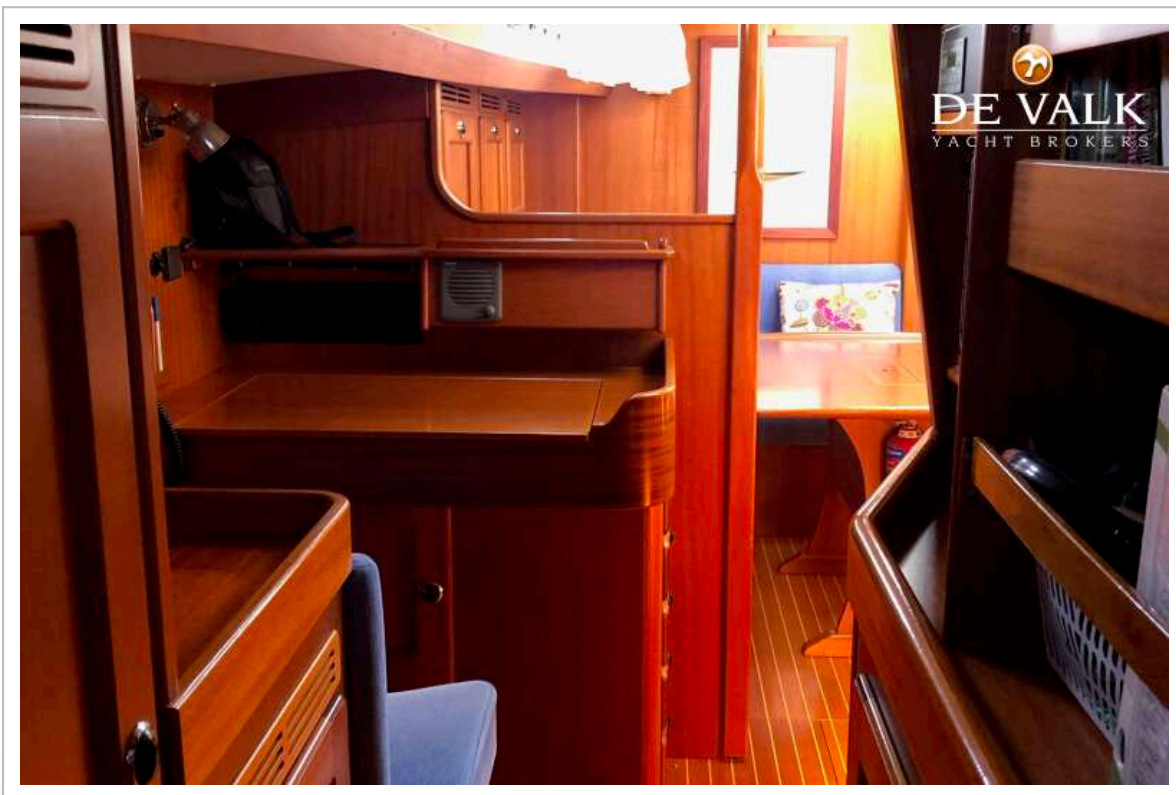
# HALLBERG RASSY 43 MK I



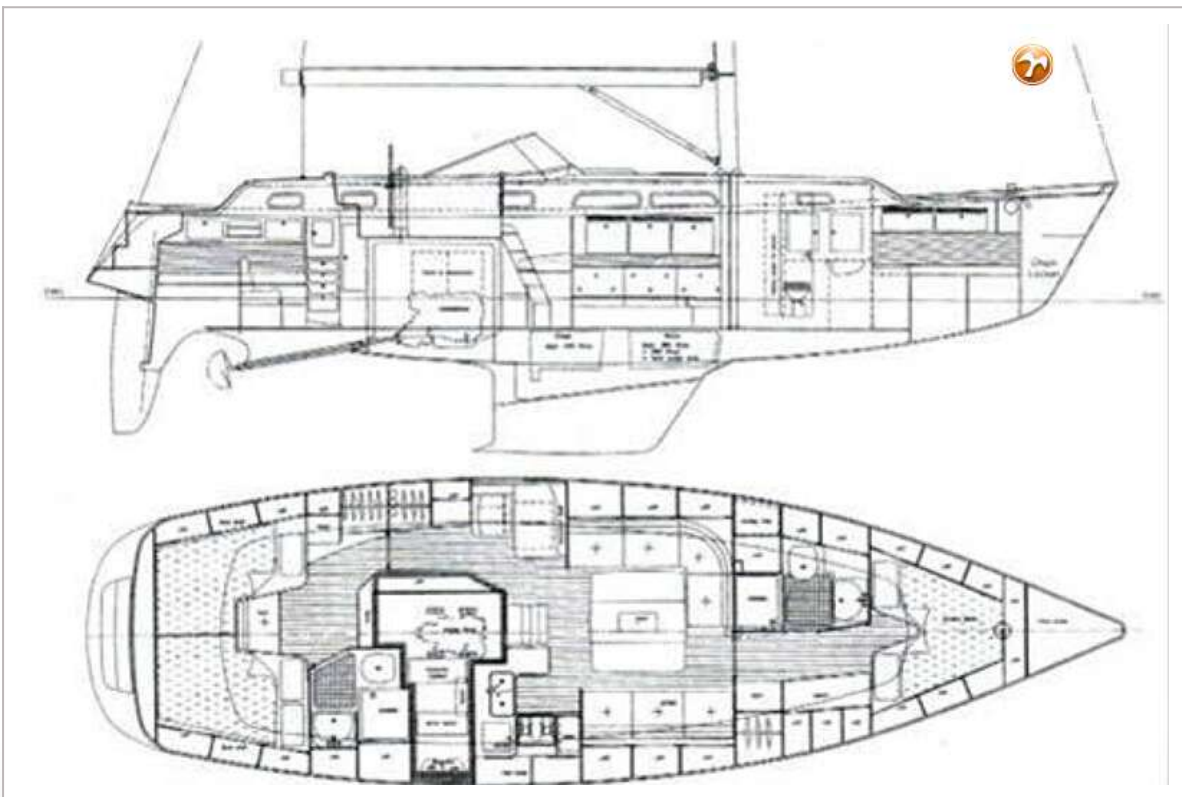
# HALLBERG RASSY 43 MK I



# HALLBERG RASSY 43 MK I



# HALLBERG RASSY 43 MK I



# HALLBERG RASSY 43 MK I

