



BAVARIA 40 VISION

## VAN DE MAKELAAR

Vision Series from Bavaria Yachts was created not for the charter market, but for the private owners that plan to use their boats for extended cruising. The layout, controls, and systems of the Bavaria 40 Vision offer better comfort for the intended crew. With 6-foot 7-inch headroom and plenty of daylight, the 40 Vision provides one of the most comfortable, airy and bright interiors in her class. The particular boat has a new engine (2023) & many upgrades done by the present owner.

*Sofia Iliia-Salvanou*

## SPECIFICATIES

<b>Afmetingen</b>	11.99 x 3.99 x 1.76 (m)	<b>Bouwer</b>	BAVARIA YACHTBAU
<b>Bouwjaar</b>	2007	<b>Hutten</b>	2
<b>Materiaal</b>	Polyester	<b>Slaapplaatsen</b>	6
<b>Motor(en)</b>	1 x VOLVO PENTA D2-50 diesel	<b>Pk/Kw</b>	50.00 (pk), 36.80 (kw)
<b>Vraagprijs</b>	verkocht (BTW )	<b>Ligplaats</b>	elders / niet bij verkoopkantoor

## CONTACT

<b>Kantoor</b>	De Valk Corfu	<b>Telefoon</b>	(+30) 6948681503
<b>Adres</b>	New Port of Corfu, near Gouvia Marina 490 83 Corfu GR	<b>E-mail</b>	corfu@devalk.nl

## DISCLAIMER

Hoewel er uiterste zorg besteed is aan de correctheid, volledigheid en actualiteit van onze informatie kunnen hieraan geen rechten worden ontleend.



## ALGEMEEN

<b>Model</b>	BAVARIA 40 VISION
<b>Type</b>	zeiljacht
<b>Lengte (m)</b>	11,99
<b>Breedte (m)</b>	3,99
<b>Diepgang (m)</b>	1,76
<b>Bouwjaar</b>	2007
<b>Gebouwd door</b>	BAVARIA YACHTBAU
<b>Land</b>	Duitsland
<b>Ontwerper</b>	J & J
<b>Bruto tonnage</b>	13,7
<b>Netto tonnage</b>	4,1
<b>Romp materiaal</b>	polyester
<b>Romp kleur</b>	wit
<b>Kiel type</b>	vin kiel
<b>Dek materiaal</b>	polyester
<b>Afwerking dek</b>	teak Cleaned & oiled annually
<b>Afwerking kuip</b>	teak
<b>Antifouling (jaar)</b>	2024
<b>Raamlijsten</b>	Remove, reseal & place all port windows
<b>Dekluik</b>	ja
<b>Radarbeugel</b>	ja
<b>Brandstoftank (liter)</b>	220 +140 day tank
<b>Inhoudsmeter (brandstoftank)</b>	ja
<b>Brandstof dagtank (liter)</b>	140
<b>Inhoudsmeter (dagtank)</b>	ja
<b>Drinkwatertank (liter)</b>	150 (bow) + 220 (aft)
<b>Inhoudsmeter (drinkwatertank)</b>	ja
<b>Vuilwatertank (liter)</b>	130, All pipes replaced.
<b>Inhoudsmeter (vuilwatertank)</b>	ja
<b>Stuurwiel</b>	ja



Extra info	Watermaker was removed but pipes to tanks were left in place
Extra info	Dehumidifier MAECO, permanently mounted.
Extra info	Thermostatic mixer to control hot water, in bathroom & bath plate

## ACCOMMODATIE

Hutten	2
Slaapplaatsen	6
Vloer	teak
Salon	ja
Navigatie ruimte	ja
Kaartentafel	ja
Achterkajuit	ja
Dinette	ja
Openslaande deur naar kuip	ja
Keuken	ja
Aanrechtblad	ja
Spoelbak	ja
Kooktoestel	ENO with electric ignition (3 Gas bottles on board)
Oven	ja
Koelkast	85Lt (2024) and cooler 150 Lt
Vriezer	75 Lt (aft cabin)
Warmwatersysteem	ja
Waterdruksysteem	ja
Koffiezetapparaat	ja
Kommaliewant	ja
Eigenaarshut	tweepersoonsbed Renewed upholstery (2020), custom made sheets & covers
Kledingkast	ja
Badkamer	apart
Toilet	apart
Toilet Systeem	elektrisch JABSCO silent flush (2022)



Wasbak	in de badkamer
Douche	apart
Gastenhut 1	tweepersoonsbed Bow. (Flexima premium mattress plus soft top (2023)
Kledingkast	ja
Badkamer	gedeeld Large with large cubicle shower
Toilet	gedeeld JABSCO silent flush (2022)
Toilet systeem	elektrisch
Wasbak	in de badkamer
Douche	gedeeld
Extra info	Mirrors new (2024)
Extra info	Magma coal Grill with mount (kept in Garage)
Extra info	Fishing RODS and mounts on aft rail

## MOTOR(EN)

Aantal motoren	1
Merk	VOLVO PENTA
Type	D2-50
Pk	50
kW	36.80
Brandstof	diesel
Kruissnelheid (kn)	7,5
Motoruren	170
Koelsysteem motor	NEW Engine 2023 & NEW Sail Drive & New alternator
Aandrijving	sail-drive
Boegschroef	Serviced 2024
Type schroef	New (2024)
Elektrische lenspomp	ja
Bilge alarm	ja
Accu's	ja
Startaccu	New (2023)



Lichtaccu	600 Ah Lifepo4
Boegschroefaccu	75 Ah Optima
Accu monitor	ja
Acculader	ja
Omvormer	1.600Watt (2024), led to all 220 sockets. 4x220 sockets in saloo
Acculader/omvormer	ja
Zonnecellen	400 Watts. Victron charger. Fitted on custom made aft arch
Walstroom	ja
Watermaker	Removed but pipes remain
Extra info	One socket 220 in each cabin & USB charging in each cabin.
Extra info	Separate transformer for shore power 2.000 Watt
Extra info	Philipi instrumentation( fuel level in both tanks +electrical %

## NAVIGATIE

Kompas	ja
Dieptemeter	ja
Log	Digital online Logbook, records all passages & provides keydata
Marifoon	X 2 (one on NAV station & one in cockpit)
Autopiloot	ja
Radar	Fitted on custom made aft arch
GPS	Antenna (2020)
Plotter	Chart plotter Raymarine C90W with multiple cards
AIS transponder	ja
Epirb	ja
"MOB" zender	ja
Navigatieverlichting	ja
Zoeklicht	ja
Extra info	SSB Radio with antenna in the rear
Extra info	STARLINK (2024). ORCA CO-Pilot operated on ipad iphone (2023)



## UITRUSTING

<b>Bimini</b>	New 2024
<b>Kuipkussens</b>	NEW
<b>Kuiptafel</b>	ja
<b>Zwemplatform</b>	Electric with remote control
<b>Boegtrap</b>	And platform with integrated anchor.
<b>Loopplank</b>	ja
<b>Dekdouche</b>	ja
<b>Anker</b>	Rocna Vulcan 25 Kg
<b>Ankerketting</b>	70 m x 10mm
<b>Anker 2</b>	Fortress Spare
<b>Ankerketting</b>	40m rope
<b>Ankerlier</b>	elektrisch Serviced 2023.Operation at the winch & at wheelhouse
<b>Bijboot</b>	Zodiac 2,7m
<b>Buitenboordmotor</b>	2,5Hp YAMAHA mounted on back rail. SUP 2023
<b>Davits</b>	ja
<b>Zeereling</b>	roestvast staal
<b>Reddingsvlot</b>	ja
<b>Reddingsvlot (pers)</b>	4
<b>Reddingsvlot laatst gekeurd</b>	2024
<b>Zwemvesten</b>	2 MOB for life jackets
<b>Veiligheidsharnas</b>	ja
<b>Reddingsboei</b>	ja
<b>Veiligheidslijnen op dek</b>	ja
<b>Stootkussens</b>	ja
<b>Landvasten</b>	ja
<b>Reserve onderdelen</b>	ja
<b>Gereedschap</b>	Shackles & blocks
<b>TV</b>	SAMSUNG 24" smart tv in the saloon
<b>Brandblusser</b>	X 4
<b>Extra info</b>	Additional alternator for Lithium Batteries (2023)



**Extra info**

Additional ventilation on request of Volvo engineer sensor.2023

**Extra info**

Electronic emergency torch, FLARES 2023, MOB Sling Curtecy flags

## TUIGAGE

**Tuigage**

ja

**Staad want**

Inspected 2024

**Grootzeil**

50m2 with electric winch controlled from helm, Sail not new but

**Fok**

28m2 furling

**Genua**

52m2 furling. Sail not new, but the original.

**Giekneerhouder**

X 2

**Multifunctionele lieren**

X6 in cockpit



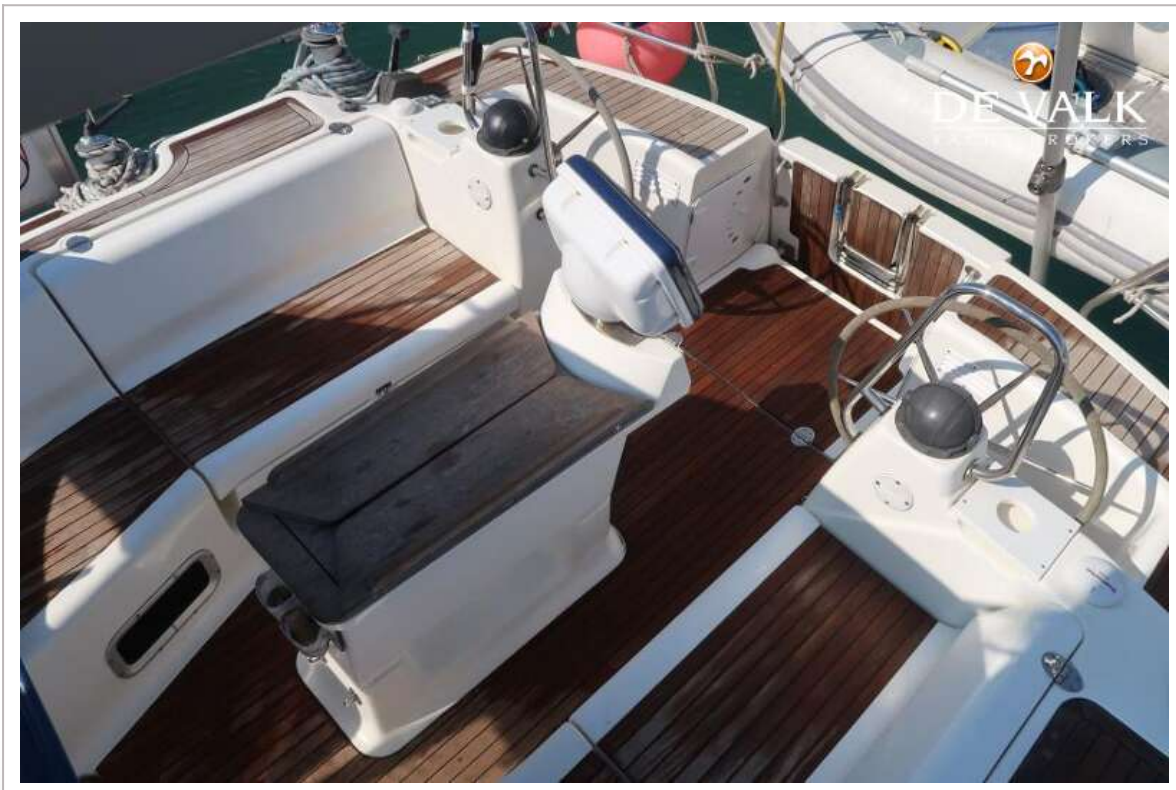
# BAVARIA 40 VISION



# BAVARIA 40 VISION



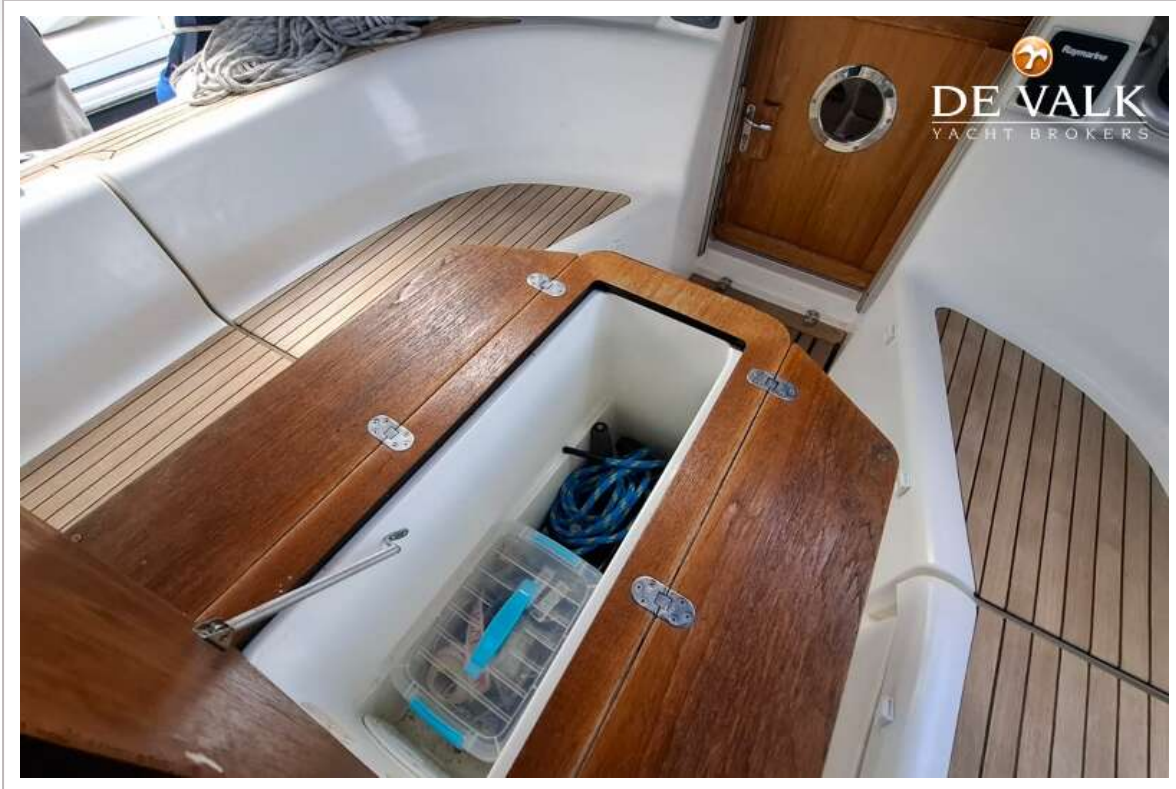
# BAVARIA 40 VISION



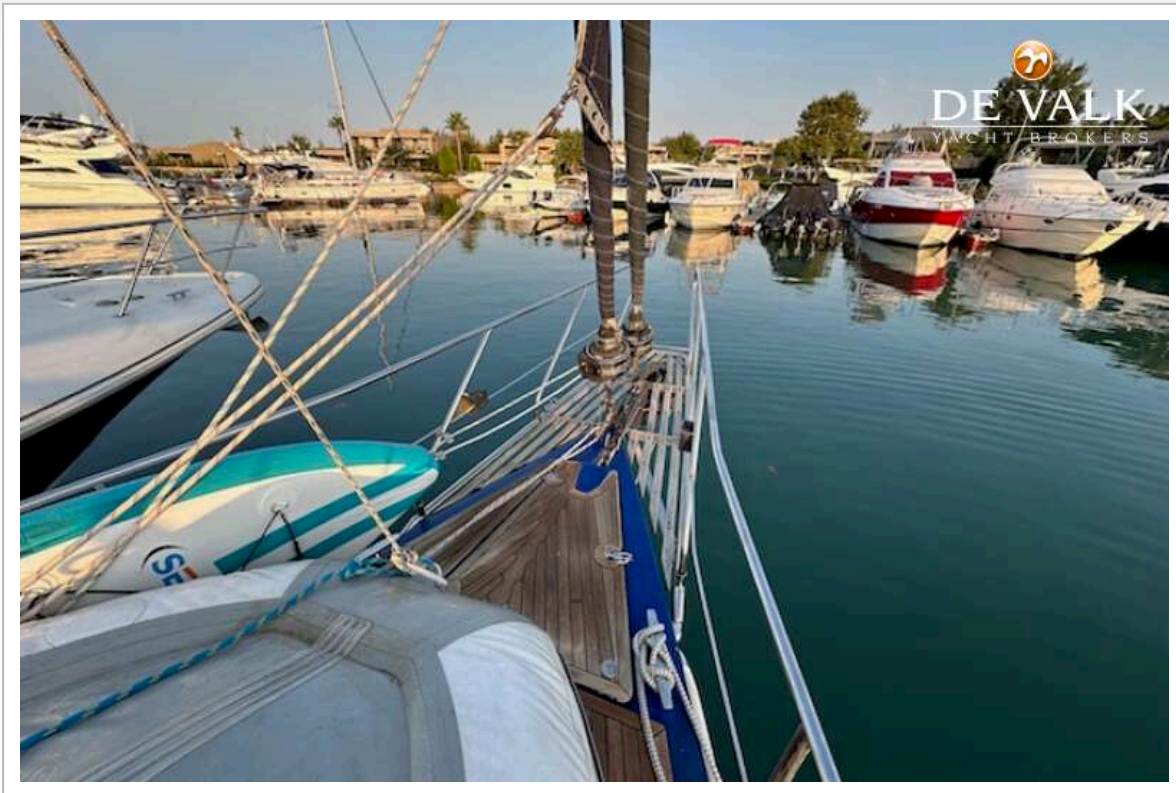
# BAVARIA 40 VISION



# BAVARIA 40 VISION



# BAVARIA 40 VISION



# BAVARIA 40 VISION



# BAVARIA 40 VISION





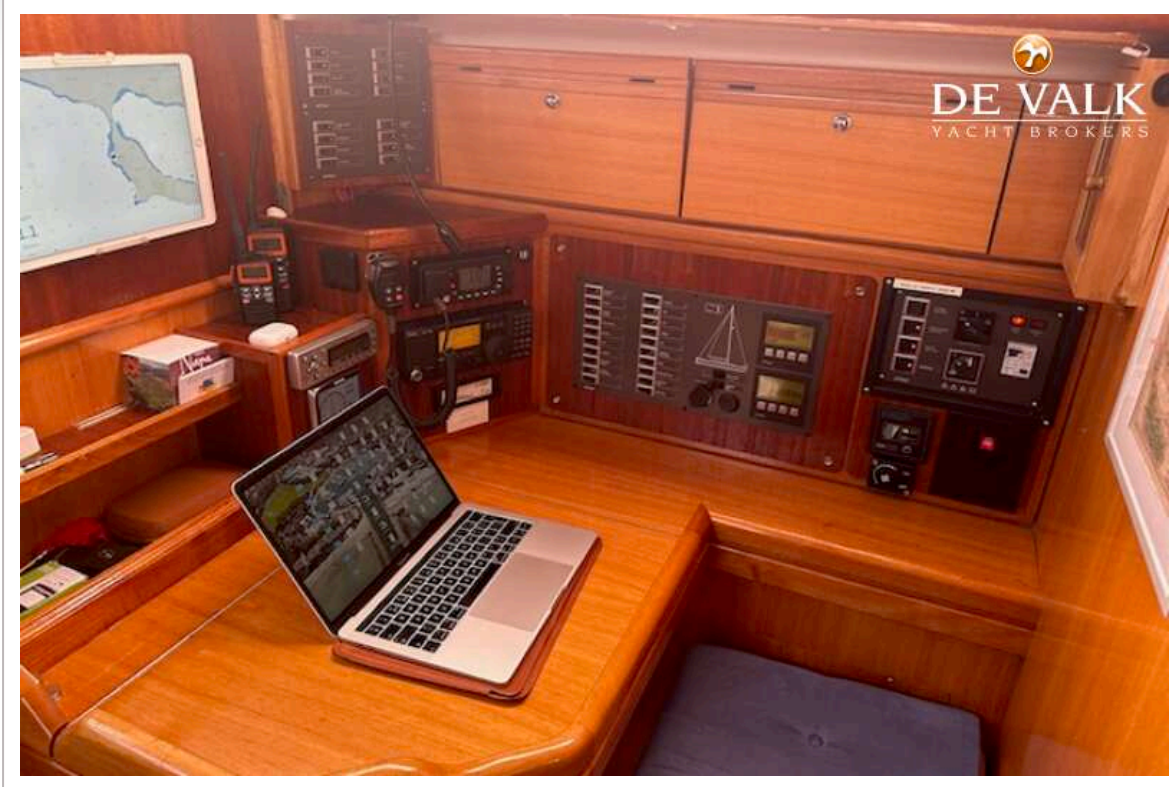
# BAVARIA 40 VISION



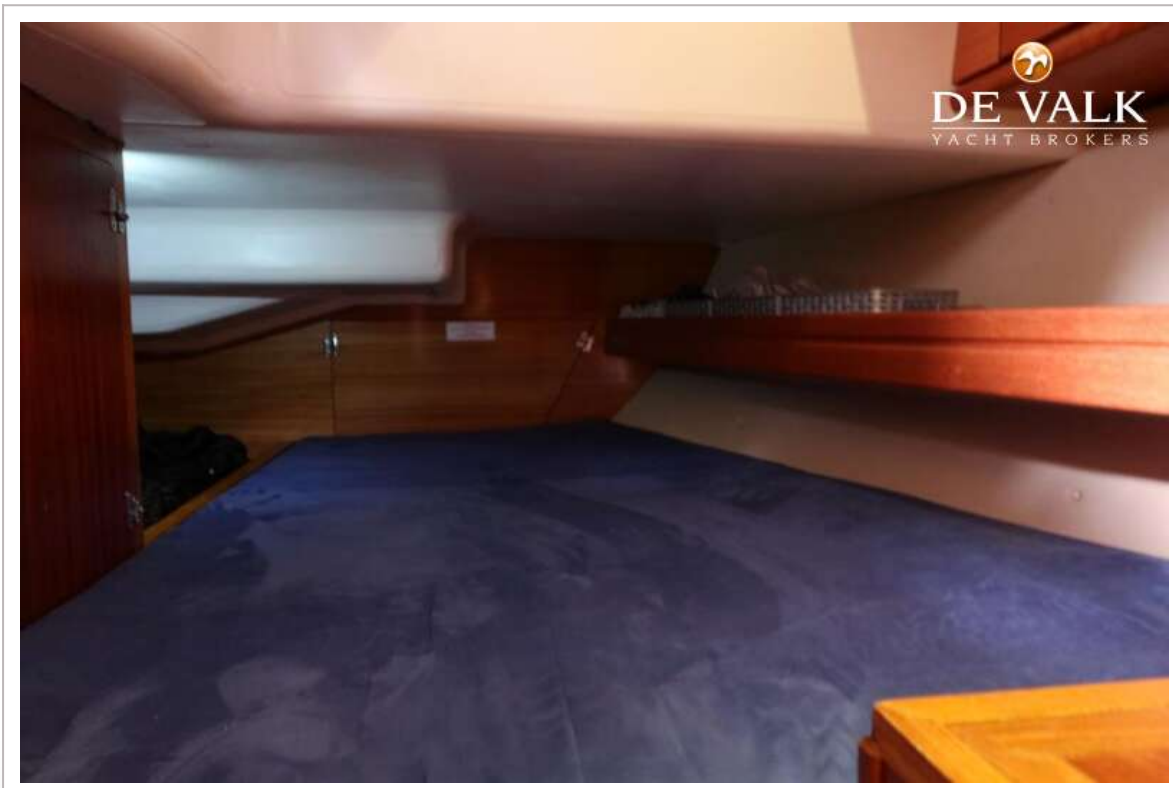
# BAVARIA 40 VISION



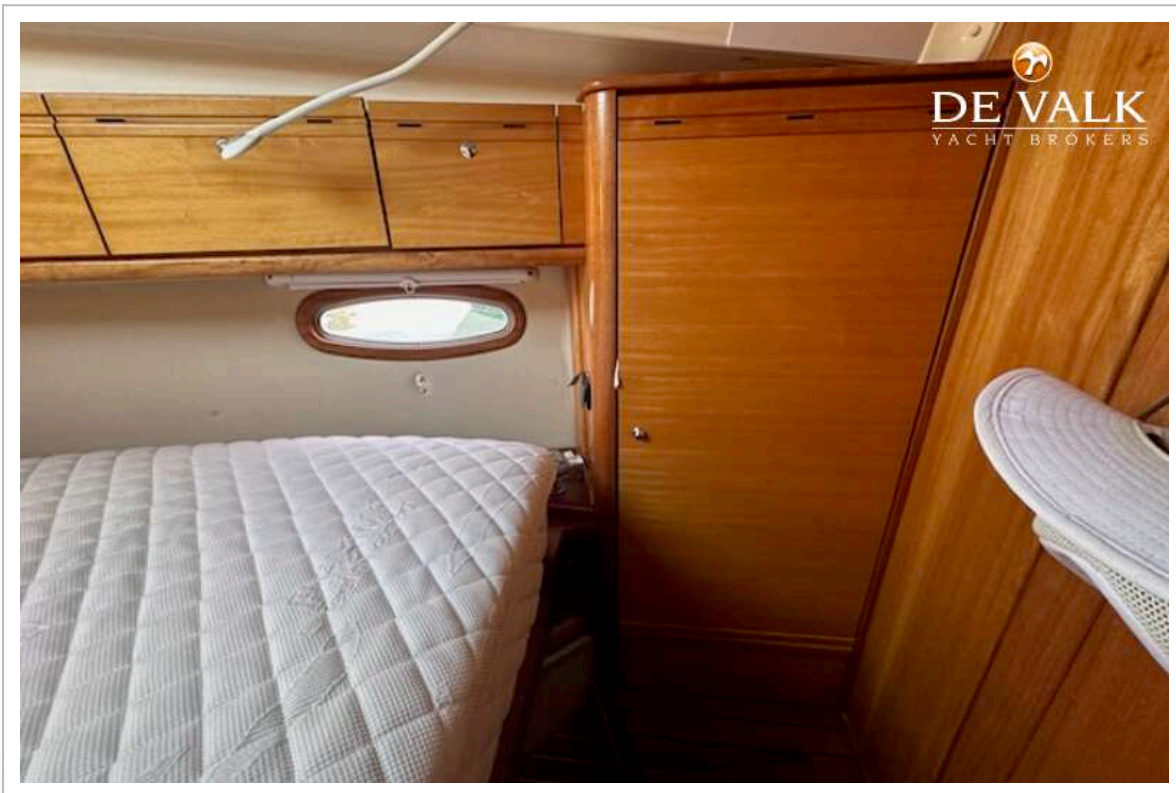
# BAVARIA 40 VISION



# BAVARIA 40 VISION



# BAVARIA 40 VISION



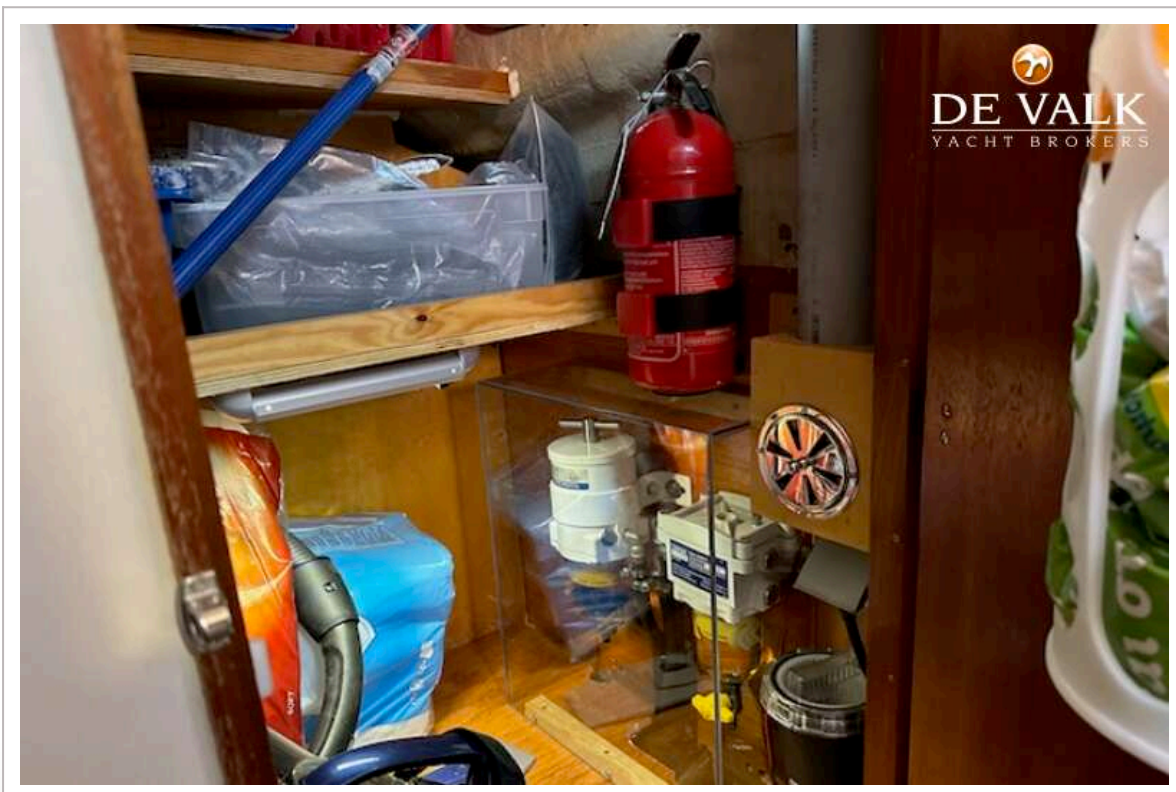
# BAVARIA 40 VISION



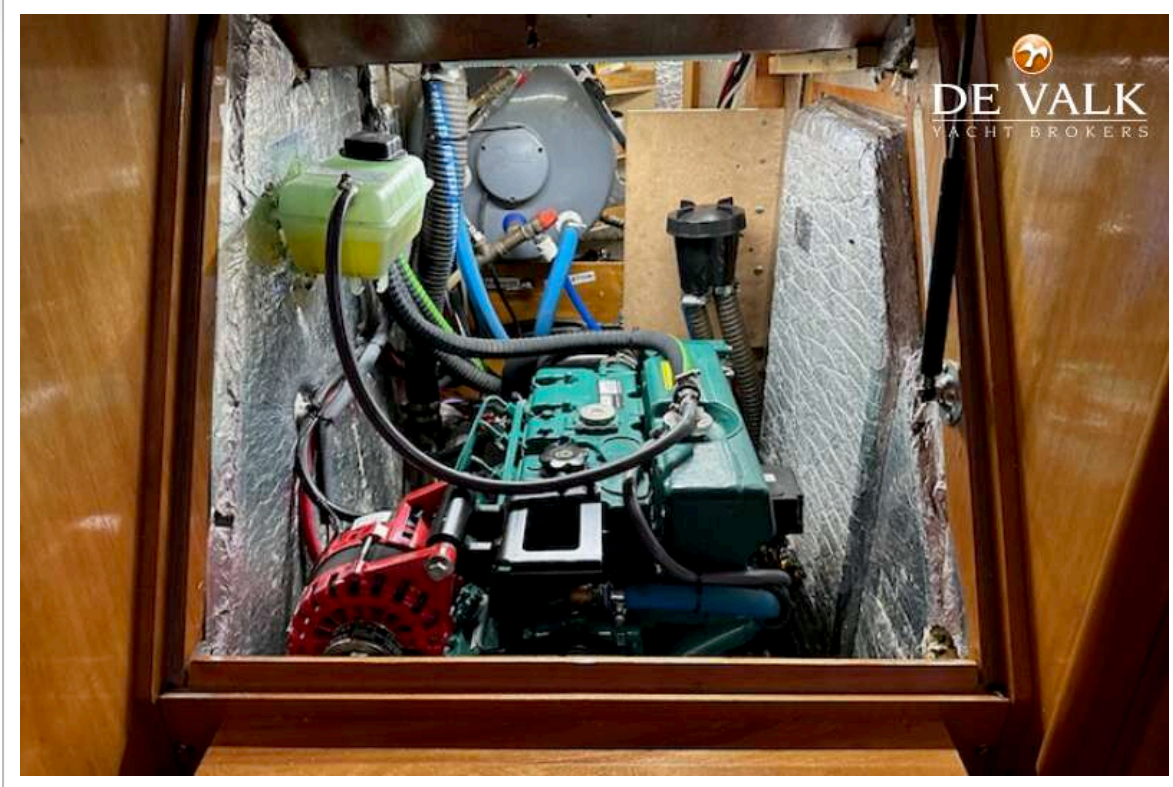
# BAVARIA 40 VISION



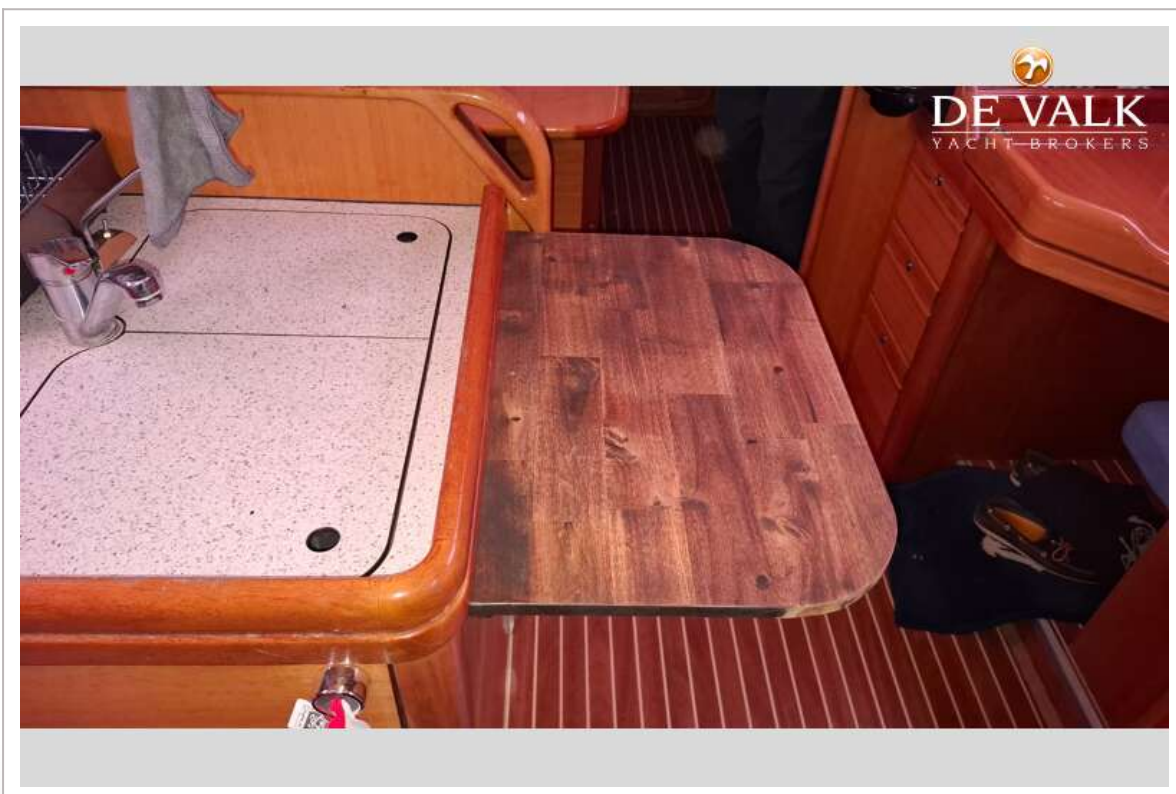
# BAVARIA 40 VISION



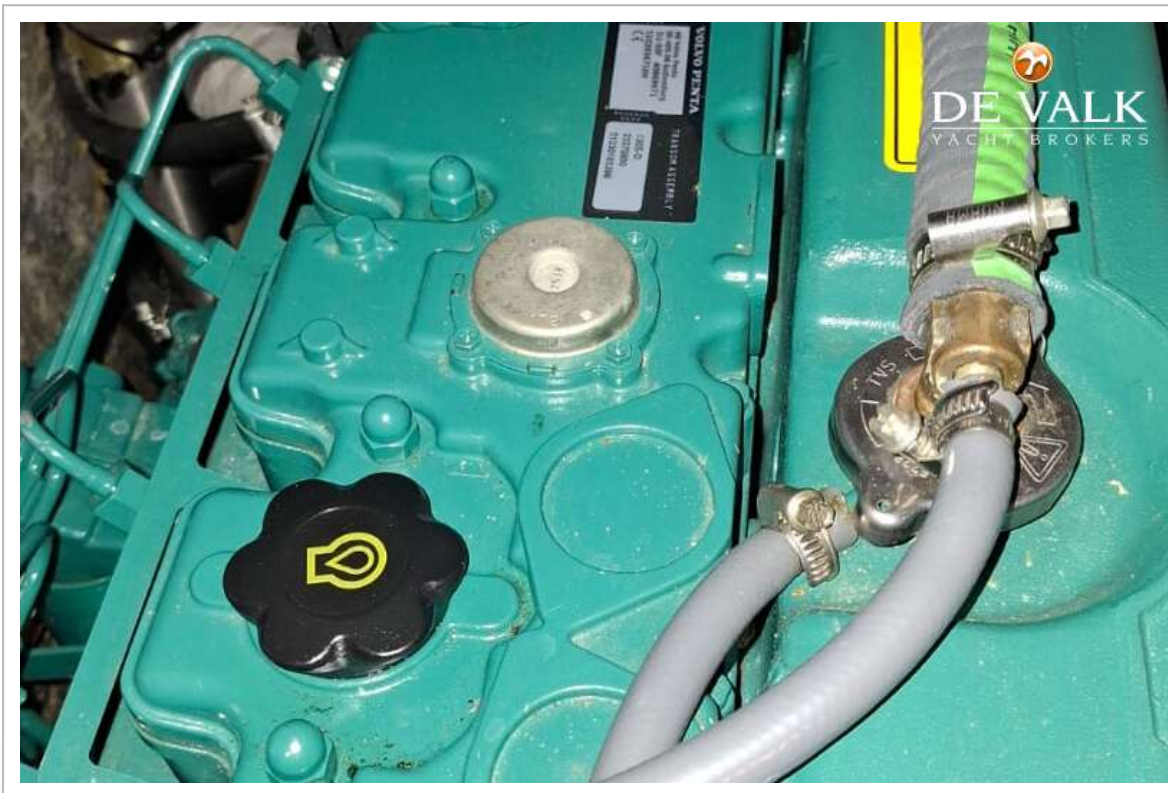
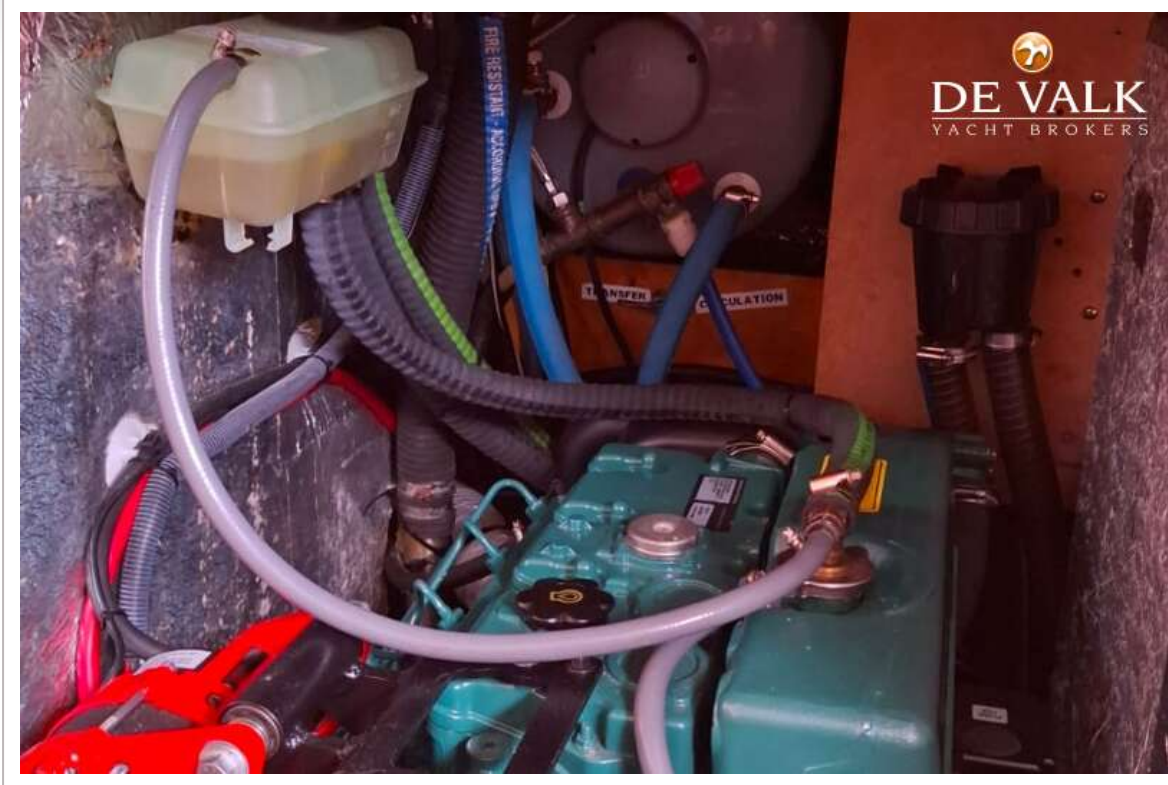
# BAVARIA 40 VISION



# BAVARIA 40 VISION



# BAVARIA 40 VISION



# BAVARIA 40 VISION

